

World Journal of *Gastroenterology*

World J Gastroenterol 2021 July 21; 27(27): 4252-4483



REVIEW

- 4252** Update on the association of hepatitis B with intrahepatic cholangiocarcinoma: Is there new evidence?
Fragkou N, Sideras L, Panas P, Emmanouilides C, Sinakos E
- 4276** Viral infections in inflammatory bowel disease: Tips and tricks for correct management
Craviotto V, Furfaro F, Loy L, Zilli A, Peyrin-Biroulet L, Fiorino G, Danese S, Allocca M
- 4298** Pancreatic cancer: A review of epidemiology, trend, and risk factors
Hu JX, Zhao CF, Chen WB, Liu QC, Li QW, Lin YY, Gao F
- 4322** Minimally invasive image-guided therapy of primary and metastatic pancreatic cancer
Bibok A, Kim DW, Malafa M, Kis B
- 4342** Comprehensive review of diagnostic modalities for early chronic pancreatitis
Ge QC, Dietrich CF, Bhutani MS, Zhang BZ, Zhang Y, Wang YD, Zhang JJ, Wu YF, Sun SY, Guo JT

MINIREVIEWS

- 4358** Dysregulated liver function in SARS-CoV-2 infection: Current understanding and perspectives
Huang YK, Li YJ, Li B, Wang P, Wang QH
- 4371** Impact of surgery for chronic pancreatitis on the risk of pancreatic cancer: Untying the Gordian knot
Kalayarasan R, Narayanan S, Sahoo J, Mohan P
- 4383** Neoadjuvant therapy for pancreatic ductal adenocarcinoma: Opportunities for personalized cancer care
Hamad A, Brown ZJ, Ejaz AM, Dillhoff M, Cloyd JM
- 4395** Role of artificial intelligence in multidisciplinary imaging diagnosis of gastrointestinal diseases
Berbis MA, Aneiros-Fernández J, Mendoza Olivares FJ, Nava E, Luna A
- 4413** Hyperbaric oxygen therapy as a complementary treatment for radiation proctitis: Useless or useful? – A literature review
Alpuim Costa D, Amaro CE, Nunes A, Cardoso JS, Daniel PM, Rosa I, Branco JV

ORIGINAL ARTICLE

Retrospective Study

- 4429** Multifocal autoimmune pancreatitis: A retrospective study in a single tertiary center of 26 patients with a 20-year literature review
Huang XM, Shi ZS, Ma CL

- 4441** Recent trends in the prevalence and distribution of colonic diverticula in Japan evaluated using computed tomography colonography

Isohata N, Nagata K, Utano K, Nozaki R, Nozu S, Kato T, Kijima S, Matsumoto H, Majima K, Ryu Y, Hirayama M, Endo S

Observational Study

- 4453** Prognostic role of plasma level of angiopoietin-1, angiopoietin-2, and vascular endothelial growth factor in hepatocellular carcinoma

Choi GH, Jang ES, Kim JW, Jeong SH

Prospective Study

- 4468** Determinants of disease-specific knowledge among children with inflammatory bowel disease and their parents: A multicentre study

Kowalska-Duplaga K, Gawlik-Scislo A, Krzesiek E, Jarocka-Cyrta E, Łazowska-Przeorek I, Duplaga M, Banaszkiewicz A

LETTER TO THE EDITOR

- 4481** Is there higher percentage of undetected osteopenia and osteoporosis among patients with ulcerative colitis in Saudi Arabia?

Olic Akrapovic I, Radic M, Tonkic A

ABOUT COVER

Editorial Board Member of *World Journal of Gastroenterology*, Jong-Inn Lee, PhD, MD, Member of Healthcare Review and Assessment Committee in Seoul, Institute of Healthcare Insurance Review and Assessment Service, Review and Assessment Division 3, 135, Jungdae-ro (IT Venturetower East Building 9th Floor), Songpa-gu, Seoul 05717, South Korea. jileesto@hira.or.kr

AIMS AND SCOPE

The primary aim of *World Journal of Gastroenterology* (WJG, *World J Gastroenterol*) is to provide scholars and readers from various fields of gastroenterology and hepatology with a platform to publish high-quality basic and clinical research articles and communicate their research findings online. WJG mainly publishes articles reporting research results and findings obtained in the field of gastroenterology and hepatology and covering a wide range of topics including gastroenterology, hepatology, gastrointestinal endoscopy, gastrointestinal surgery, gastrointestinal oncology, and pediatric gastroenterology.

INDEXING/ABSTRACTING

The WJG is now indexed in Current Contents®/Clinical Medicine, Science Citation Index Expanded (also known as SciSearch®), Journal Citation Reports®, Index Medicus, MEDLINE, PubMed, PubMed Central, and Scopus. The 2021 edition of Journal Citation Report® cites the 2020 impact factor (IF) for WJG as 5.742; Journal Citation Indicator: 0.79; IF without journal self cites: 5.590; 5-year IF: 5.044; Ranking: 28 among 92 journals in gastroenterology and hepatology; and Quartile category: Q2. The WJG's CiteScore for 2020 is 6.9 and Scopus CiteScore rank 2020: Gastroenterology is 19/136.

RESPONSIBLE EDITORS FOR THIS ISSUE

Production Editor: Yan-Xia Xing; **Production Department Director:** Xiang Li; **Editorial Office Director:** Ze-Mao Gong.

NAME OF JOURNAL

World Journal of Gastroenterology

ISSN

ISSN 1007-9327 (print) ISSN 2219-2840 (online)

LAUNCH DATE

October 1, 1995

FREQUENCY

Weekly

EDITORS-IN-CHIEF

Andrzej S Tarnawski, Subrata Ghosh

EDITORIAL BOARD MEMBERS

<http://www.wjgnet.com/1007-9327/editorialboard.htm>

PUBLICATION DATE

July 21, 2021

COPYRIGHT

© 2021 Baishideng Publishing Group Inc

INSTRUCTIONS TO AUTHORS

<https://www.wjgnet.com/bpg/gerinfo/204>

GUIDELINES FOR ETHICS DOCUMENTS

<https://www.wjgnet.com/bpg/GerInfo/287>

GUIDELINES FOR NON-NATIVE SPEAKERS OF ENGLISH

<https://www.wjgnet.com/bpg/gerinfo/240>

PUBLICATION ETHICS

<https://www.wjgnet.com/bpg/GerInfo/288>

PUBLICATION MISCONDUCT

<https://www.wjgnet.com/bpg/gerinfo/208>

ARTICLE PROCESSING CHARGE

<https://www.wjgnet.com/bpg/gerinfo/242>

STEPS FOR SUBMITTING MANUSCRIPTS

<https://www.wjgnet.com/bpg/GerInfo/239>

ONLINE SUBMISSION

<https://www.f6publishing.com>



Retrospective Study

Multifocal autoimmune pancreatitis: A retrospective study in a single tertiary center of 26 patients with a 20-year literature review

Xin-Ming Huang, Zhen-Shan Shi, Cheng-Le Ma

ORCID number: Xin-Ming Huang 0000-0002-2354-8082; Zhen-Shan Shi 0000-0002-1544-9674; Cheng-Le Ma 0000-0002-0867-4347.

Author contributions: Huang XM did the imaging analysis and supervised all the procedures of this study; Shi ZS designed this study, wrote the main manuscript, revised the manuscript, and did statistical analysis; Shi ZS and Ma CL performed dynamic contrast enhanced-computed tomography scanning; Huang XM and Ma CL contributed equally.

Supported by the Science and Technology Committee of Fujian Province, No. 2016Y0039; and the Subsidizing Provincial Universities Project of Educational Commission of Fujian Province, No. JK2017019.

Institutional review board

statement: This retrospective study was reviewed and approved by the Institutional Review Board of the First Affiliated Hospital of Fujian Medical University (Fuzhou, China), and written informed consent from patients was waived.

Informed consent statement: The study has obtained after each patient agreed to treatment by written consent.

Conflict-of-interest statement:

Xin-Ming Huang, Zhen-Shan Shi, Cheng-Le Ma, Department of Radiology, The First Affiliated Hospital of Fujian Medical University, Fuzhou 350005, Fujian Province, China

Xin-Ming Huang, Department of Radiology, Fujian Medical University Union Hospital, Fuzhou 350005, Fujian Province, China

Corresponding author: Zhen-Shan Shi, MD, Chief Doctor, Department of Radiology, The First Affiliated Hospital of Fujian Medical University, No. 20 Cha-Zhong Road, Fuzhou 350005, Fujian Province, China. shizhenshan0206@163.com

Abstract

BACKGROUND

Multifocal-type autoimmune pancreatitis (AIP), sometimes forming multiple pancreatic masses, is frequently misdiagnosed as pancreatic malignancy in routine clinical practice. It is critical to know the imaging features of multifocal-type AIP to prevent misdiagnosis and unnecessary surgery. To the best of our knowledge, there have been no studies evaluating the value of diffusionweighted imaging (DWI), axial fat-suppressed T1 weighted image (T1WI), and dynamic contrast enhanced-computed tomography (DCE-CT) in detecting the lesions of multifocal-type AIP.

AIM

To clarify the exact prevalence and radiological findings of multifocal AIP in our cohorts and compare the sensitivity of DWI, axial fat-suppressed T1WI, and DCE-CT for detecting AIP lesions. We also compared radiological features between multifocal AIP and pancreatic ductal adenocarcinoma with several key imaging landmarks.

METHODS

Twenty-six patients with proven multifocal AIP were retrospectively included. Two blinded independent radiologists rated their confidence level in detecting the lesions on a 5-point scale and assessed the diagnostic performance of DWI, axial fat-suppressed T1WI, and DCE-CT. CT and magnetic resonance imaging of multifocal AIP were systematically reviewed for typical imaging findings and compared with the key imaging features of pancreatic ductal adenocarcinoma.

RESULTS

Among 118 patients with AIP, 26 (22.0%) had multiple lesions (56 lesions).

There are no conflicts of interest related to this study.

Data sharing statement: No additional data are available.

Open-Access: This article is an open-access article that was selected by an in-house editor and fully peer-reviewed by external reviewers. It is distributed in accordance with the Creative Commons Attribution NonCommercial (CC BY-NC 4.0) license, which permits others to distribute, remix, adapt, build upon this work non-commercially, and license their derivative works on different terms, provided the original work is properly cited and the use is non-commercial. See: <http://creativecommons.org/licenses/by-nc/4.0/>

Manuscript source: Unsolicited manuscript

Specialty type: Radiology, nuclear medicine and medical imaging

Country/Territory of origin: China

Peer-review report's scientific quality classification

Grade A (Excellent): 0
Grade B (Very good): B, B
Grade C (Good): 0
Grade D (Fair): 0
Grade E (Poor): 0

Received: January 28, 2021

Peer-review started: January 28, 2021

First decision: February 24, 2021

Revised: February 28, 2021

Accepted: April 25, 2021

Article in press: April 25, 2021

Published online: July 21, 2021

P-Reviewer: Cengiz F, Triantafyllidis J

S-Editor: Zhang L

L-Editor: Filipodia

P-Editor: Wang LL



Ulcerative colitis was associated with multifocal AIP in 7.7% (2/26) of patients, and Crohn's disease was present in 15.3% (4/26) of patients. In multifocal AIP, multiple lesions, delayed homogeneous enhancement, multifocal strictures of the main pancreatic duct, capsule-like rim, lower apparent diffusion coefficient values, and elevated serum IgG4 level were observed significantly more frequently than pancreatic ductal adenocarcinoma, whereas the presence of capsule-like rim in multifocal-type AIP was lower in frequency than total AIP. Of these lesions of multifocal AIP, DWI detected 89.3% (50/56) and 82.1% (46/56) by the senior and junior radiologist, respectively.

CONCLUSION

Multifocal AIP is not as rare as previously thought and was seen in 22.0% of our patients. The diagnostic performance of DWI for detecting multifocal AIP was best followed by axial fat-suppressed T1WI and DCE-CT.

Key Words: Autoimmune pancreatitis; Magnetic resonance imaging; Diffusion-weighted magnetic resonance imaging; Multidetector computed tomography; Pancreatic ductal adenocarcinoma; Ulcerative colitis

©The Author(s) 2021. Published by Baishideng Publishing Group Inc. All rights reserved.

Core Tip: Multifocal autoimmune pancreatitis is not as rare as previously thought and was seen in 22.0% of our patients. The diagnostic performance of diffusionweighted imaging for detecting multifocal autoimmune pancreatitis was best followed by axial fat-suppressed T1 weighted image and dynamic contrast enhanced-computed tomography.

Citation: Huang XM, Shi ZS, Ma CL. Multifocal autoimmune pancreatitis: A retrospective study in a single tertiary center of 26 patients with a 20-year literature review. *World J Gastroenterol* 2021; 27(27): 4429-4440

URL: <https://www.wjgnet.com/1007-9327/full/v27/i27/4429.htm>

DOI: <https://dx.doi.org/10.3748/wjg.v27.i27.4429>

INTRODUCTION

Autoimmune pancreatitis (AIP) is a distinctive type of chronic pancreatitis generally characterized by an autoimmune inflammatory condition in which prominent lymphoplasmacytic infiltration with associated pancreatic fibrosis causes organ dysfunction[1]. Previous studies have shown that AIP is recognized as a heterogeneous disease classified into at least two subtypes, including lymphoplasmacytic sclerosing pancreatitis (type 1) and idiopathic duct-centric pancreatitis (type 2) with granulocytic epithelial lesions[2]. Meanwhile, AIP has also been classified radiologically as diffuse, unifocal, or multifocal[3-5]. Diffuse-type AIP is easily distinguished from pancreatic ductal adenocarcinoma (PDA) by typical imaging features, *i.e.* diffuse sausage-like swelling of pancreatic parenchyma with capsule-like peripancreatic rim[6, 7]. Moreover, some studies[4,8] recently attempted to identify differential imaging findings between unifocal AIP and PDA by using computed tomography (CT), magnetic resonance imaging (MRI), or magnetic resonance cholangiopancreatography. Several key imaging landmarks, with reference to radiological morphology of the pancreatic mass lesion and stricture pattern of the main pancreatic duct (MPD), were clearly identified to be crucial to distinguish unifocal AIP from PDA. Hence, the differential diagnosis between unifocal AIP and PDA may not be as challenging as before.

However, multifocal-type AIP, sometimes forming multiple pancreatic masses, is frequently misdiagnosed as pancreatic malignancy in routine clinical practice[9,10]. It is critical to know the imaging features of multifocal-type AIP to prevent misdiagnosis and unnecessary surgery. Consequently, a clearer diagnostic consensus on the imaging characteristics of multifocal AIP is needed to differentiate from pancreatic malignancy. For this purpose, we herein report 26 cases of multifocal AIP and a review of the previous literature with an emphasis on CT and MRI imaging features that may help

definitively distinguish between multifocal AIP and PDA.

CT is the most commonly performed, noninvasive modality to evaluate both pancreatic and extrapancreatic manifestations in patients with suspected AIP[4,11]. In our experience and according to the previous literature, CT has certain limitations in showing some specific findings of focal AIP, *i.e.*, focal masses and focal MPD strictures, while these imaging findings seem to be more clearly demonstrated on MRI, especially on diffusionweighted imaging (DWI)[12]. In our previous study, we confirmed that axial T1 weighted image (T1WI) is the optimal sequence of identifying homogenously isoattenuating insulinoma on dynamic contrast enhanced-computed tomography (DCE-CT)[13]. Zhu *et al*[14] found that the appearance of multiple solid lesions can provide a diagnostic clue for identifying pancreatic nonmalignancies. Therefore, it is essential to find an optimal modality to identify pancreatic lesions as correctly as possible. To the best of our knowledge, there have been no studies evaluating the value of DWI, axial fat-suppressed T1WI, and DCE-CT in detecting the lesions of multifocal-type AIP.

We aimed to clarify the exact prevalence and radiological findings of multifocal AIP in our cohorts and compare the sensitivity of DWI, axial fat-suppressed T1WI, and DCE-CT for detecting AIP lesions. We also compared radiological features between multifocal AIP and PDA with several key imaging landmarks.

MATERIALS AND METHODS

Study population

This retrospective study was approved by the Institutional Review Board of the First Affiliated Hospital of Fujian Medical University (Fuzhou, China), and written informed consent from patients was waived. The clinical, radiological, and pathological databases at our hospital between January 2005 and July 2020 were reviewed. A total of 234 consecutive patients who had undergone DCE-CT on multidetector computerized tomography and conventional MRI imaging protocols on a 3T scanner within 5 wk of each other for suspected AIP were included. Of these initially suspected cases, we finally identified 118 patients who were diagnosed with AIP according to international consensus diagnostic criteria[15].

Among these confirmed patients, 26 patients with 56 lesions were retrospectively included in our study, based on the following inclusion criteria: (1) the use of DCE-CT with the acquisition on the pancreatic arterial, pancreatic parenchyma, and portal venous phases; (2) conventional MRI sequences, including both axial fat-suppressed T1WI and DWI before steroid treatment; and (3) multiple focal-type AIP. In criterion (3), the multiple focal-type was defined by the presence of two or more focal lesions observed on DCE-CT or MRI, and lesions of AIP were separate (*i.e.* continuous lesion that involves at least one segment of the pancreas was previously considered to be a single lesion[14] and were thus excluded from this study).

From January 2001 to July 2020, 908 patients underwent pancreatic curative-intent surgery for PDA at our institution. To enable a 1:2 matching with the multifocal AIP group, we randomly chose 112 [78 men and 34 women; mean age \pm SD, 61 ± 8.7 years (range: 38-86 years)] among the 613 patients with PDA who also underwent both DCE-CT and conventional MRI before surgery, using Statistic Package for Social Science software to generate the random numbers.

Imaging examinations

CT protocols: DCE-CT examinations were performed using 16-, 80-, or 320-detector CT scanner (Aquilion; Toshiba Medical Systems, Tokyo, Japan), using the following pancreatic scanning parameters: (1) detector collimation, 320.0 mm \times 0.5 mm, 80.0 mm \times 0.5 mm or 16.0 mm \times 0.5 mm; (2) pitch, 1.0-1.4; (3) gantry rotation time, 0.35-0.50 s; (4) tube voltage, 120 kV; and (5) pancreatic reference tube current, 80-120 mA. All images were routinely reconstructed from the contrast-enhanced CT scans with thin-section images (slice thickness = 0.75-1.00 mm, reconstruction increment = 0.5 mm). Unenhanced and DCE-CT including the arterial, pancreatic parenchymal, and portal venous phases were acquired before and after intravenous administration of contrast agent. After unenhanced CT scanning, 300 mg/mL iodine (Ultravist 300; Schering; Bayer Healthcare Pharmaceuticals, Leverkusen, Germany) was injected intravenously using a power injector *via* an 18-gauge plastic antecubital catheter. An iodine dose of 1.5 mL/kg body weight was given at a flow rate of 4 mL/s. The administration of contrast agent was immediately followed by a flush of 30 mL saline. To accurately determine the timing for the standard triple-phase pancreatic imaging, a scanning

delay was performed based on an automated bolus-tracking technique offered by the supplier of the Toshiba CT system. Three phases enhanced scanning were obtained at a fixed delay of 20- to 25-s, 40- to 50- s, and 80- to 90-s after the contrast agent injection.

MR protocols: The MRI examinations were conducted using a 3.0 T imaging system (Magnetom Trio; Siemens Healthineers, Erlangen, Germany) with an 8-channel phased-array coil. The routine MR sequences for imaging the pancreas, including axial fat-suppressed T1-weighted turbo spin echo sequence, coronal T2-weighted (half-Fourier acquisition single-shot turbo spin echo) sequence, axial fat-suppressed T2-weighted turbo spin echo sequence, axial T1-weighted in-phase and out-of-phase sequences with fixed echo times of 1.4 and 2.8 ms, respectively, and DWI were performed at our institution. Axial single-shot echo-planar DWI sequence was completed using the following scanning parameters: repetition time, 6900 ms; echo time, 73 ms; intersection gap, 6 mm; slice thickness, 3 mm; field of view, 350 mm × 350 mm; matrix size, 128 mm × 128 mm; flip angle, 90°; partial Fourier factor, 6/8; parallel imaging reduction factor, 2; bandwidth, 2441 Hz per pixel; and the number of excitations, 8 (water excitation technique with b-value of 50 s/mm² and 800 s/mm²). Axial fat-suppressed T1WI was performed with the following parameters: echo time, 1.4 ms; repetition time, 3.9 ms; flip angle 9°; slice thickness, 3 mm; matrix, 320 mm × 182 mm; field of view, 250 mm × 280 mm; and the number of excitations, 1. DWI and axial fat-suppressed T1WI sequences were performed with breath hold and free breathing, respectively. The main scan parameters of the MR sequences were presented in our earlier paper[13]. Apparent diffusion coefficient values (ADC) maps were automatically generated from DW images, and ADC values were calculated on a Syngo workstation (Syngo Multimodality Workplace; Siemens Healthineers). One radiologist, who had precise knowledge of the lesion's location based on the overall findings from the radiological images and pathological and surgical datasets, retrospectively manually drew and placed the largest possible regions of interest within the pancreatic lesion and surrounding parenchyma. ADC values of pancreatic lesions were measured and compared with the surrounding parenchyma.

Image analysis: The detection of each multifocal AIP lesion was divided into three image sets: axial fat-suppressed T1WI, DWI, and DCE-CT. Each image set was independently analyzed on a picture archiving and communication workstation (Shida picture archiving and communication system, Fuzhou, China) with the free adjustment of window width and level by two abdominal radiologists (21 and 7 years of experience in interpreting abdominal CT/MRI). The two radiologists knew that this study was being conducted to detect the lesions of multifocal AIP but were unaware of any clinical information, biological data, other conventional imaging findings, histopathological, and surgical results. The radiologists identified the absence or presence of the lesion with a 5-point diagnostic confidence scales as follows: Score 1, definitely absent; Score 2, probably absent; score 3, indeterminate; Score 4, probably present; and Score 5, definitely present. In cases with diagnostic confidence score of 4 or 5, a lesion was present, and the location of the lesion was recorded on a report sheet. The signal intensity of the lesion was assessed on axial fat-suppressed T1WI and DWI image sets compared with the surrounding parenchyma and was categorized as low, intermediate, or high.

One month after the completion of the detection rating for all patients of multifocal AIP, two radiologists subsequently analyzed the DCE-CT and MRI images of all 168 patients (56 AIP and 112 PDA) in a random sequence and determined, in consensus, the absence or presence of the following characteristic imaging features as previous reports[4,16-18] for differentiating between AIP and PDA: multiple pancreatic masses; ill-defined margin; delayed homogeneous enhancement; capsule-like rim; marked upstream MPD dilation; upstream pancreatic atrophy; multiple MPD strictures; and extrapancreatic manifestations, including vascular invasion, peripancreatic fat infiltration, and peripancreatic and retroperitoneal lymphadenopathy.

Laboratory data: The serum immunoglobulin G fraction 4 (IgG4) concentrations, if available, were carefully recorded.

Statistical analysis

Statistical analysis was performed using Statistic Package for Social Science (version 19.0; IBM Corp., Armonk, NY, United States) software. Quantitative variables were summarized as the mean ± SD. Descriptive variables were determined using percentages and medians. The Wilcoxon signed rank test was performed to analyze the mean ADC values in multifocal AIP lesions and the surrounding parenchyma and to compare the ADC values in multifocal AIP and PDA. Prior to determining the

agreement between the two radiologists with respect to confidence ratings for a detection task of multifocal AIP lesions, κ -values were used to assess interobserver agreement interpreted as follows: 0.81-1.00, excellent agreement; 0.61-0.80, good agreement; 0.41-0.60, moderate agreement; and 0.21-0.40, fair agreement[19,20]. Friedman's nonparametric test was performed to evaluate the differences of diagnostic confidence level among axial fat-suppressed T1WI, DWI, and DCE-CT image sets for each radiologist. The frequency of the characteristic imaging findings for differentiating multifocal AIP from PDA was compared *via* the chi-squared or McNemar's test, as appropriate. A two-tailed *P* value of < 0.05 was deemed to be a statistically significant difference.

RESULTS

Overall profile of 26 patients with multifocal AIP at our center

Clinical findings: From 26 patients, 18 were female, and 8 were male. The median age was 60.7 ± 17.0 years (range: 26-89 years). Among 118 patients with AIP, 54 (45.8%) showed diffuse-type AIP, 38 (32.2%) showed unifocal-type AIP, and twenty-six cases (22.0%) showed multifocal-type AIP. Of the 26 patients with multifocal-type AIP, 4 (15.3%) were associated with Crohn's disease, and 2 (7.7%) were associated with ulcerative colitis (Figure 1). A total 56 lesions were found in these 26 patients with multifocal AIP. Twenty-two patients had two lesions, and four patients had three lesions. The lesions of 16 patients were in the pancreatic head/uncinate process and tail. The lesions of 6 patients were in the pancreatic head and body; 4 patients with 3 lesions each were in the pancreatic head, body, and tail. Pancreatic tissue samples were obtained in 18 patients (69.2%) including three from surgical resection, five from endoscopic ultrasound-guided fine-needle aspiration biopsy, and ten from CT guided percutaneous biopsy. All patients were affected by type 1 AIP.

The serum concentrations of IgG4 ($0.03\text{--}2.01$ g/L) were elevated above the normal limit in 94.9% (112/118) of the patients with AIP, 96.2% (25/26) of the patients with multifocal-type AIP, 96.3% (52/54) of the patients with diffuse-type AIP, and 92.1% (35/38) of the patients with unifocal-type AIP. The mean serum concentration of IgG4 of the patients with multifocal-type AIP was 14.77 ± 8.05 g/L. IgG4 levels were not elevated in 53 patients with PDA, and the remaining 59 patients with PDA had no measurement of serum IgG4 before surgery.

Treatment and relapse of patients with multifocal-type AIP: Initial treatment of all patients with multifocal AIP consisted of steroid therapy in 23 patients (88.5%) or surgical resection in three patients (11.5%). After the diagnosis was rendered, 22 patients received treatment with high-dose steroid. They received an intravenous injection of daily methylprednisolone 40-80 mg for 3 to 7 d, after which 10-20 mg of oral prednisone was given per day. During the median 8.6 mo (interquartile range: 5.1 to 23.0 mo) of follow-up, all patients who underwent steroid treatment with/without surgical resection showed complete radiological and clinical remission. The remaining 4 patients refused steroid treatment and were lost to follow-up.

Diagnostic performances of DWI, axial fat-suppressed T1WI, and DCE-CT

The senior and junior radiologist detected 50/56 and 46/56 lesions on DWI, 34/56 and 38/56 on axial fat-suppressed T1WI, and 22/56 and 24/56 on DCE-CT, respectively. DWI MRI had the highest relative sensitivity [46/50 (92.1%89.3%) lesions] in the detection of lesions in multifocal AIP (Figures 2 and 3).

Statistically significant differences of the confidence level score were observed among these three image sets for the two radiologists. Diagnostic confidence level score of DWI alone was the highest, while that of DCE-CT was the lowest for each radiologist (Table 1). Weighted κ values that rated the confidence levels of the readers in terms of image interpretation are summarized in Table 2. Good interobserver agreement was observed between the two radiologists for determining the presence or absence of lesions on DWI datasets (weighted $\kappa = 0.878$). Moderate interobserver agreement was observed between two readers on axial fat-suppressed T1WI and DCE-CT image datasets (weighted $\kappa = 0.742$ and weighted $\kappa = 0.683$, respectively).

The mean ADC values ($\times 10^{-3} \text{ mm}^2/\text{s}$) of multifocal AIP lesions and the surrounding pancreatic parenchyma were 0.96 ± 0.14 (range: 0.681.26) and 1.15 ± 0.15 (range: 0.891.40), respectively. ADC values of the AIP lesions were significantly lower compared with those of the surrounding pancreatic parenchyma according to the Wilcoxon signedrank test ($P = 0.001$; Table 3).

Table 1 Friedman analysis of variance by ranks for the diagnosis confidence level score

Groups	Junior radiologist	Senior radiologist
DWI	2.32	2.32
Axial-suppressed T1WI	1.95	2.07
Dynamic contrast enhanced CT	1.73	1.61
<i>P</i> value	0.033	0.004

CT: Computed tomography; DWI: Diffusionweighted imaging; T1WI: T1 weighted image.

Table 2 Interobserver agreement in image interpretation

Groups	κ -value
DWI	0.878
Axial fat-suppressed T1WI	0.742
Dynamic contrast enhanced CT	0.683

CT: Computed tomography; DWI: Diffusionweighted imaging; T1WI: T1 weighted image.

Table 3 Apparent diffusion coefficient values of autoimmune pancreatitis lesions compared with those of surrounding pancreatic tissue¹

	AIP lesions ADC	Surrounding parenchyma ADC	Wilcoxon signed-rank test	
	Values (<i>n</i> = 56) ($\times 10^{-3} \text{ mm}^2/\text{s}$)	Values (<i>n</i> = 56) ($\times 10^{-3} \text{ mm}^2/\text{s}$)	Z value	<i>P</i> value
Mean	0.96	1.15	-5.11	0.001
SD	0.14	0.15		
Median	0.96	1.16		
Minimum	0.68	0.89		
Maximum	1.26	1.40		

¹Apparent diffusion coefficient values in autoimmune pancreatitis lesions were lower (0.96 ± 0.14) compared with those in the surrounding pancreatic parenchyma (1.15 ± 0.15), Wilcoxon signed-rank test demonstrated this difference to be statistically significant ($P = 0.001$). ADC: Apparent diffusion coefficient; AIP: Autoimmune pancreatitis; SD: Standard deviation.

Evaluation of radiological findings between multifocal-type AIP and PDA

Fifty-six patients with multifocal-type AIP and 112 patients with PDA were compared. The differences in the imaging features between multifocal-type AIP and PDA are summarized in Table 4. Multifocality (100% *vs* 1.7%, $P < 0.01$), capsule-like rim (21.4% *vs* 3.6%, $P < 0.01$), multiple MPD strictures (47.3% *vs* 1.8%, $P < 0.01$), and delayed homogeneous enhancement (92.8% *vs* 13.4%, $P < 0.01$) were significantly more frequent in multifocal AIP. Peripancreatic fat infiltration (46.4% *vs* 91.0%, $P < 0.01$), vascular invasion (14.3% *vs* 71.4%, $P < 0.01$), upstream pancreatic atrophy (19.6% *vs* 58.9%, $P < 0.01$), peripancreatic and retroperitoneal lymphadenopathy (3.6% *vs* 61.6%, $P < 0.01$), and marked upstream MPD dilatation (3.6% *vs* 52.7%, $P < 0.01$) were significantly more frequent in PDA than in multifocal AIP. ADC values of the multifocal AIP lesions were significantly lower than that of PDA. However, the indistinct margin between multifocal AIP and PDA was not statistically different. Furthermore, the capsule-like rim was present with a lower frequency (21.4%) in multifocal AIP in our study. Additionally, three multifocal AIP patients underwent ¹⁸F-fluorodeoxyglucose (FDG) positron emission tomography/CT, and increased FDG uptake was noted in seven lesions in the whole pancreas (Figures 2 and 3).

Table 4 Comparison of radiological findings between patients with multifocal autoimmune pancreatitis and pancreatic ductal adenocarcinoma, *n* (%)

	Multifocal AIP	PDA	<i>P</i> value
No. of radiological findings of the pancreas	56	112	
Multifocal lesion	56 (100)	2 (1.7)	< 0.01
Capsule-like rim	12 (21.4)	4 (3.6)	< 0.01
Delayed homogeneous enhancement on MDCT	52 (92.8)	15 (13.4)	< 0.01
Margin (indistinct)	48 (85.7)	89 (79.5)	0.325
Peripancreatic fat infiltration	26 (46.4)	102 (91.0)	< 0.01
Vascular invasion	8 (14.3)	80 (71.4)	< 0.01
Multiple MPD strictures	53 (47.3)	2 (1.8)	< 0.01
Marked upstream MPD dilatation	2 (3.6)	59 (52.7)	< 0.01
Upstream pancreatic atrophy	11 (19.6)	66 (58.9)	< 0.01
Lymphadenopathy	2 (3.6)	69 (61.6)	< 0.01
ADC values ($\times 10^{-3} \text{ mm}^2/\text{s}$)	0.96 ± 0.16	1.15 ± 0.14	< 0.01

ADC: Apparent diffusion coefficient; AIP: Autoimmune pancreatitis; MDCT: Multidetector computed tomography; MPD: Main pancreatic duct; MRI: Magnetic resonance image; PDA: Pancreatic ductal adenocarcinoma.

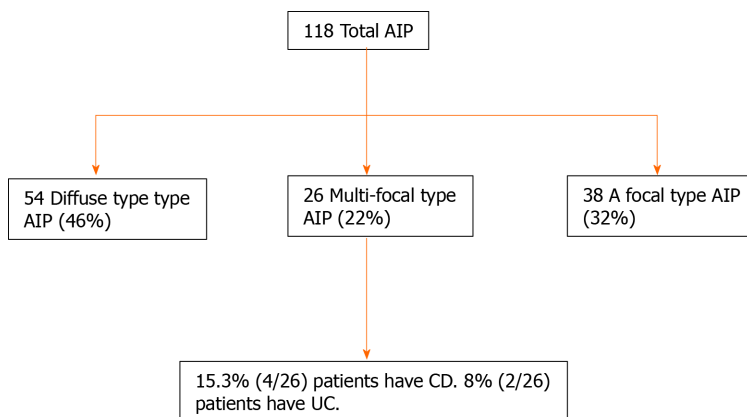


Figure 1 Flowchart of patients with multifocal autoimmune pancreatitis have Crohn's disease and ulcerative colitis. AIP: Autoimmune pancreatitis; CD: Crohn's disease; UC: Ulcerative colitis.

DISCUSSION

AIP is an uncommon form of chronic pancreatitis that typically affects men in their fifth to sixth decades and usually presents with pancreatic enlargement and obstructive jaundice, with a reported incidence rate of up to 6% in chronic pancreatitis patients[1,21,22]. The most common radiological manifestation of AIP is a grossly enlarged sausage-shaped hypoattenuating pancreas with homogeneous decreased enhancement at the arterial phase and delayed rim-like enhancement at the portal venous phase. The unifocal form of AIP at the pancreatic head is by far the second-most common type[6]. As in our cases, the most uncommon type is the multifocal form that has only been described in a few reports[3,10,23]. All patients with multifocal AIP in our study were type 1 and responded well to steroid therapy, consistent with previous study results.

In this cohort of 118 patients of AIP, 22.0% showed multifocal-type AIP, suggesting it is not as uncommon as previously thought in actual clinical practice. One possible reason for overlooking is the radiologists have been extremely unfamiliar with its characteristic imaging features. Another possible reason may be attributed to some CT and MR imaging findings of unifocal-type or diffuse-type AIP may overlap with multifocal-type AIP. It has also been hypothesized that different diagnostic

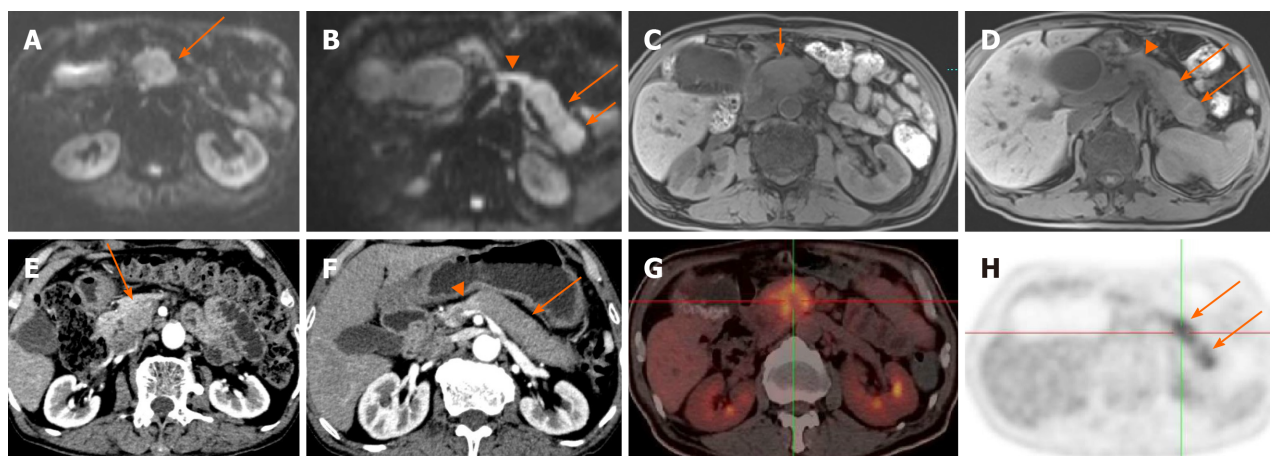


Figure 2 A 72-year-old man with multifocal autoimmune pancreatitis. A-D: Diffusionweighted imaging and axial fat-suppressed T1 weighted image showed three indistinct mass-like swelling (arrows) in the pancreatic head, body, and tail; E: The pancreatic head lesion (arrow) could not be clearly shown on dynamic contrast enhanced-computed tomography; F: Dynamic contrast enhanced-computed tomography could only show a merged lesion in the pancreatic body/tail (arrow); G-H: Positron emission tomography-computed tomography images showed three focal intense uptakes of fluorodeoxyglucose in the whole pancreas, which were not detectable on dynamic contrast enhanced-computed tomography. B, D, and F: The computed tomography and magnetic resonance images demonstrated relatively normal volume of pancreas (arrowheads) in the pancreatic neck.

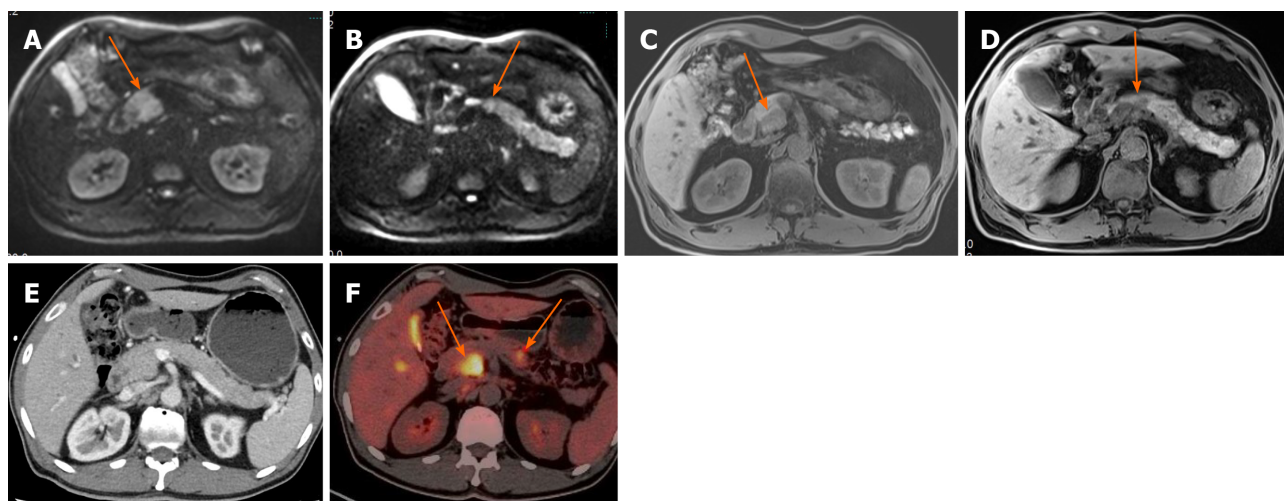


Figure 3 A 68-year-old man with multifocal autoimmune pancreatitis. A-D: Diffusionweighted imaging and axial fat-suppressed T1 weighted image showed two indistinct mass-like swelling (arrows) in the pancreatic head and body; E and F: Positron emission tomography-computed tomography image showed two focal intense uptakes of fluorodeoxyglucose in the pancreatic head and body, which were not detectable on dynamic contrast enhanced-computed tomography.

approaches in China may greatly contribute to the relatively lower incidence rate of multifocal AIP.

Current diagnostic methods available for the differentiation of pancreatic lesions are various, among which contrast-enhanced ultrasonography, endoscopic ultrasonography (EUS), contrast enhanced-CT, contrast enhanced-MRI, contrast-enhanced elastography, EUS-fine-needle aspiration, and contrast enhanced-EUS have been widely used in recent years. As one of the current gold standards for diagnosis of pancreatic neoplasms, EUS- fine-needle aspiration with 100% specificity can correctly access the pathological diagnosis directly. In addition, an accurate tissue diagnosis based on a EUS- fine-needle aspiration biopsy specimen may render surgery for those benign neoplasms or indolent cancer unnecessary. However, the best method for pancreatic mass diagnosis remains unclear[24]. In our country, DCE-CT, diagnostic endoscopic retrograde pancreatography, endoscopic biopsy, and the following therapeutic trial of steroids have been more actively conducted in the management of patients with suspected AIP than before[9,14,25]. Multifocal AIP can be mistakenly classified as diffuse or unifocal AIP when only using CT, as our study results showed that DWI and axial fat-suppressed T1WI have higher sensitivity than DCE-CT to find AIP lesions.

A literature search with the medical subject headings term 'autoimmune pancreatitis' in PubMed, Wanfang Database, and the China National Knowledge Infrastructure was performed by authors (Zhen-Shan Shi) on August 8, 2020. The reference lists of relevant studies were searched to identify other additional eligible articles. A PubMed search of the past 20 years revealed 783 articles describing focal-type AIP in the English and Chinese literature. However, most reported studies of focal AIP have focused on the imaging features of unifocal and not multifocal; only 18 articles involved the imaging features of multifocal-type AIP. Most of these studies were small case series or single case reports. A total of 132 cases of multifocal AIP, including our current cases, were retrospectively analyzed and summarized in the present study. We found that multifocal AIP accounted for 22% of total AIP, and most patients presented above the age of 60 years with more females than males[1,21]. The gender difference of multifocal AIP was not consistent with that of total AIP with more males than females.

In our study, 23.3% of multifocal AIP patients had associated IBDs (15.3% had Crohn's disease, and 7.7% had ulcerative colitis) and were type 1 AIP. Most cases with coexisting AIP and IBD were type 2 AIP in the previous studies[2,26]. The possible reason is type 1 AIP is significantly more frequent in East Asia, and type 2 AIP generally prevails in Western countries[26]. Our data suggest that elevated serum IgG4 concentrations are also helpful in identifying multifocal AIP, like in previous studies[4,27].

This study confirmed the high sensitivity (82%89%) of DWI for the detection of AIP lesions[7,28], which also provided an important contribution to the highest radiologist diagnostic confidence score and the highest level of interobserver agreement (weighted $\kappa = 0.878$) between the two radiologists and also demonstrated that DWI was the optimal image sequence among the three image sets (DWI, axial fat-suppressed T1WI, and DCE-CT). We speculate that the lowest confidence score and interobserver agreement of DCE-CT between the two radiologists with different experience may be due to the inferior resolution in showing the slight difference of CT value between AIP lesions and the surrounding pancreas, which may make images more difficult to interpret than with DWI and axial fat-suppressed T1WI. Conversely, MRI has the excellent soft tissue contrast resolution, and DWI has outstanding imaging capability to detect pancreatic focal lesions, even minor lesions[29,30].

A significant difference in ADC value was also found between multifocal AIP lesions and the surrounding pancreas, similar to the results of unifocal-type AIP[4]. We hypothesize that DWI, which can be conducted without contrast media and in a relatively short time, will become a crucial imaging technique in the detection of AIP lesions.

Our present study showed that seven key distinguishing features of PDA and multifocal AIP were as follows among various CT and MR findings, particularly for multifocal AIP: (1) multiple pancreatic lesions; (2) hypoattenuating capsule-like rim; (3) delayed homogeneous good enhancement; (4) absence of distal pancreatic atrophy; (5) mild upstream MPD dilatation; (6) multiple MPD strictures; and (7) a lower ADC value are more frequently observed in multifocal AIP like other prior reports of unifocal-type AIP, which could be deemed reliable findings to prevent unnecessary invasive procedures and surgical treatment in the management of the suspected patients.

On the contrary, peripancreatic fat infiltration, vascular invasion, and peripancreatic and retroperitoneal lymphadenopathy are more often observed in PDA. Additionally, even with ^{18}F -FDG-positron emission tomography/CT examination, when the pancreatic lesion is accurately localized, it can be often confused with PDA because it has been recently reported to show increased FDG uptake at the locally affected lesions of AIP[31-33], which is also an observation from our study. We consider that the use of these seven key differentiating features can be helpful in supporting the diagnosis of AIP when the clinical, laboratory, and other imaging features are equivocal for distinguishing between focal-type AIP and PDA.

We found that there was no statistically significant difference between multifocal AIP and PDA with respect to ill-defined margin, as in previous studies[4,16]. The capsule-like rim or halo sign has already been reported as a specific feature of AIP, with a varying frequency up to 63%[5,14,34]. This sign was observed with lower frequency (21%) in multifocal AIP in our study. We presume that multifocal-type AIP is the early manifestation of AIP, and the multiple lesions will be merged into diffuse-type along with the progression of this entity. Then, typical or uncommon imaging features will be typical, and the halo sign may be more frequently seen. However, further work is needed to confirm this hypothesis.

Our study has a few limitations. First, this study was performed by a retrospective research design, and the number of cases is relatively small. However, AIP itself is a rare entity, and multifocal AIP is even rarer. Second, the incidence rate of multifocal AIP in this study was at a single tertiary center with a specialized care clinic that has been widely recognized for its expertise and experience with pancreatic diseases in our country and may confer a considerable potential referral bias with an overestimated frequency of multifocal AIP. Third, the blinded radiologists had initially determined patient diagnosis in daily clinical practice; recall bias might have occurred. Last, we used a variety of CT scanners with different detectors (*e.g.*, 320-, 80- and 16- detectors) from the same manufacturer with scan parameters that slightly varied from each other, which may affect the diagnostic performance among these modalities.

CONCLUSION

In conclusion, multifocal AIP is not as rare as previously thought. DWI as part of pancreatic conventional MRI protocol has the potential benefit in the detection of AIP lesions. The combinations of CT and MRI imaging features may be helpful for differentiating multifocal AIP from PDA by the key distinguishing findings, including multiple pancreatic lesions, capsule-like rim, delayed homogeneous enhancement, multiple MPD strictures, and lower ADC values.

ARTICLE HIGHLIGHTS

Research background

Multifocal-type autoimmune pancreatitis (AIP), sometimes forming multiple pancreatic masses, is frequently misdiagnosed as pancreatic malignancy in routine clinical practice. It is critical to know the imaging features of multifocal-type AIP to prevent misdiagnosis and unnecessary surgery. To the best of our knowledge, there have been no studies evaluating the value of diffusionweighted imaging (DWI), axial fat-suppressed T1 weighted image (T1WI), and dynamic contrast enhanced-computed tomography (DCE-CT) in detecting the lesions of multifocal-type AIP.

Research motivation

The key issue is whether CT and magnetic resonance imaging features of multifocal-type AIP can help definitively distinguish from pancreatic ductal adenocarcinoma (PDA) and whether there is an optimal modality to identify pancreatic lesions as correctly as possible. The results will provide important information on the diagnostic performances of DWI, axial fat-suppressed T1WI, and DCE-CT and the key imaging features for differentiating multifocal-type AIP from PDA.

Research objectives

We aimed to clarify the exact prevalence and radiological findings of multifocal AIP in our cohorts and compare the sensitivity of DWI, axial fat-suppressed T1WI, and DCE-CT for detecting AIP lesions. We also compared radiological features between multifocal AIP and PDA with several key imaging landmarks.

Research methods

Twenty-six patients with proven multifocal AIP were retrospectively included. Two blinded independent radiologists rated their confidence level in detecting the lesions on a 5-point scale and assessed the diagnostic performance of DWI, axial fat-suppressed T1WI, and DCE-CT. CT and magnetic resonance images of multifocal AIP were systematically reviewed for typical imaging findings and compared with the key imaging features of PDA.

Research results

Among 118 patients with AIP, 26 (22.0%) had multiple lesions (56 lesions). Ulcerative colitis was associated with multifocal AIP in 7.7% (2/26) of patients, and Crohn's disease was associated in 15.3% (4/26) of patients. In multifocal AIP, multiple lesions, delayed homogeneous enhancement, multifocal strictures of main pancreatic duct, capsule-like rim, lower apparent diffusion coefficient values, and elevated serum IgG4 Level were observed significantly more frequently than in PDA, whereas the presence

of capsule-like rim in multifocal-type AIP was lower in frequency than total AIP. Of these lesions of multifocal AIP, DWI detected 89.3% (50/56) and 82.1% (46/56) by the senior and junior radiologist, respectively.

Research conclusions

Multifocal AIP is not as rare as previously thought and was seen in 22% of our patients. The diagnostic performance of DWI for detecting multifocal AIP was best followed by axial fat-suppressed T1WI and DCE-CT.

Research perspectives

Larger and longer term prospective studies to investigate the important radiological findings for differential diagnosis between multifocal AIP and PDA should be performed in future studies.

REFERENCES

- 1 Nagpal SJS, Sharma A, Chari ST. Autoimmune Pancreatitis. *Am J Gastroenterol* 2018; **113**: 1301 [PMID: 29910463 DOI: 10.1038/s41395-018-0146-0]
- 2 Negrelli R, Boninsegna E, Avesani G, Zamboni GA, Brozzi L, Frulloni L, Manfredi R, Pozzi Mucelli R. Type 1 and Type 2 Autoimmune Pancreatitis: Distinctive Clinical and Pathological Features, But Are There Any Differences at Magnetic Resonance? *Pancreas* 2018; **47**: 1115-1122 [PMID: 30141780 DOI: 10.1097/MPA.0000000000001142]
- 3 Shiokawa M, Kodama Y, Hiramatsu Y, Kurita A, Sawai Y, Uza N, Watanabe T, Chiba T. Autoimmune pancreatitis exhibiting multiple mass lesions. *Case Rep Gastroenterol* 2011; **5**: 528-533 [PMID: 22087084 DOI: 10.1159/000331799]
- 4 Lee S, Kim JH, Kim SY, Byun JH, Kim HJ, Kim MH, Lee MG, Lee SS. Comparison of diagnostic performance between CT and MRI in differentiating non-diffuse-type autoimmune pancreatitis from pancreatic ductal adenocarcinoma. *Eur Radiol* 2018; **28**: 5267-5274 [PMID: 29948075 DOI: 10.1007/s00330-018-5565-1]
- 5 Rehnitz C, Klauss M, Singer R, Eehalt R, Werner J, Büchler MW, Kauczor HU, Grenacher L. Morphologic patterns of autoimmune pancreatitis in CT and MRI. *Pancreatol* 2011; **11**: 240-251 [PMID: 21625195 DOI: 10.1159/000327708]
- 6 Tabata T, Kamisawa T, Takuma K, Hara S, Kuruma S, Inaba Y. Differences between diffuse and focal autoimmune pancreatitis. *World J Gastroenterol* 2012; **18**: 2099-2104 [PMID: 22563198 DOI: 10.3748/wjg.v18.i17.2099]
- 7 Kamisawa T, Takuma K, Anjiki H, Egawa N, Hata T, Kurata M, Honda G, Tsuruta K, Suzuki M, Kamata N, Sasaki T. Differentiation of autoimmune pancreatitis from pancreatic cancer by diffusion-weighted MRI. *Am J Gastroenterol* 2010; **105**: 1870-1875 [PMID: 20216538 DOI: 10.1038/ajg.2010.87]
- 8 Kim M, Jang KM, Kim JH, Jeong WK, Kim SH, Kang TW, Kim YK, Cha DI, Kim K. Differentiation of mass-forming focal pancreatitis from pancreatic ductal adenocarcinoma: value of characterizing dynamic enhancement patterns on contrast-enhanced MR images by adding signal intensity color mapping. *Eur Radiol* 2017; **27**: 1722-1732 [PMID: 27510628 DOI: 10.1007/s00330-016-4522-0]
- 9 Deng WL, Li J, Zhu L, He M, Xue HD, Jin ZY. [Multifocal IgG4-related Autoimmune Pancreatitis: Report of One Case]. *Zhongguo Yi Xue Ke Xue Yuan Xue Bao* 2019; **41**: 575-578 [PMID: 31484625 DOI: 10.3881/j.issn.1000-503X.10823]
- 10 Suzumura K, Hatano E, Uyama N, Okada T, Asano Y, Hai S, Nakasho K, Fujimoto J. Multifocal Mass Lesions in Autoimmune Pancreatitis. *Case Rep Gastroenterol* 2017; **11**: 678-685 [PMID: 29282391 DOI: 10.1159/000481938]
- 11 Furuhashi N, Suzuki K, Sakurai Y, Ikeda M, Kawai Y, Naganawa S. Differentiation of focal-type autoimmune pancreatitis from pancreatic carcinoma: assessment by multiphase contrast-enhanced CT. *Eur Radiol* 2015; **25**: 1366-1374 [PMID: 25433412 DOI: 10.1007/s00330-014-3512-3]
- 12 Oki H, Hayashida Y, Oki H, Kakeda S, Aoki T, Taguchi M, Harada M, Korogi Y. DWI findings of autoimmune pancreatitis: comparison between symptomatic and asymptomatic patients. *J Magn Reson Imaging* 2015; **41**: 125-131 [PMID: 24273124 DOI: 10.1002/jmri.24508]
- 13 Shi Z, Li X, You R, Li Y, Zheng X, Ramen K, Loosa VS, Cao D, Chen Q. Homogeneously isoattenuating insulinoma on biphasic contrast-enhanced computed tomography: Little benefits of diffusion-weighted imaging for lesion detection. *Oncol Lett* 2018; **16**: 3117-3125 [PMID: 30127903 DOI: 10.3892/ol.2018.9037]
- 14 Zhu L, Dai MH, Wang ST, Jin ZY, Wang Q, Denecke T, Hamm B, Xue HD. Multiple solid pancreatic lesions: Prevalence and features of non-malignancies on dynamic enhanced CT. *Eur J Radiol* 2018; **105**: 8-14 [PMID: 30017302 DOI: 10.1016/j.ejrad.2018.05.016]
- 15 Shimosegawa T, Chari ST, Frulloni L, Kamisawa T, Kawa S, Mino-Kenudson M, Kim MH, Klöppel G, Lerch MM, Lohr M, Notohara K, Okazaki K, Schneider A, Zhang L; International Association of Pancreatolgy. International consensus diagnostic criteria for autoimmune pancreatitis: guidelines of the International Association of Pancreatolgy. *Pancreas* 2011; **40**: 352-358 [PMID: 21412117 DOI: 10.1007/s00330-011-1938-2]

- 10.1097/MPA.0b013e3182142fd2]
- 16 **Choi SY**, Kim SH, Kang TW, Song KD, Park HJ, Choi YH. Differentiating Mass-Forming Autoimmune Pancreatitis From Pancreatic Ductal Adenocarcinoma on the Basis of Contrast-Enhanced MRI and DWI Findings. *AJR Am J Roentgenol* 2016; **206**: 291-300 [PMID: 26797355 DOI: 10.2214/AJR.15.14974]
 - 17 **Sun GF**, Zuo CJ, Shao CW, Wang JH, Zhang J. Focal autoimmune pancreatitis: radiological characteristics help to distinguish from pancreatic cancer. *World J Gastroenterol* 2013; **19**: 3634-3641 [PMID: 23801866 DOI: 10.3748/wjg.v19.i23.3634]
 - 18 **Muhi A**, Ichikawa T, Motosugi U, Sou H, Sano K, Tsukamoto T, Fatima Z, Araki T. Mass-forming autoimmune pancreatitis and pancreatic carcinoma: differential diagnosis on the basis of computed tomography and magnetic resonance cholangiopancreatography, and diffusion-weighted imaging findings. *J Magn Reson Imaging* 2012; **35**: 827-836 [PMID: 22069025 DOI: 10.1002/jmri.22881]
 - 19 **Zhu L**, Xue HD, Sun H, Wang X, He YL, Jin ZY, Zhao YP. Isoattenuating insulinomas at biphasic contrast-enhanced CT: frequency, clinicopathologic features and perfusion characteristics. *Eur Radiol* 2016; **26**: 3697-3705 [PMID: 26815370 DOI: 10.1007/s00330-016-4216-7]
 - 20 **Lee EK**, Yun TJ, Kim JH, Lee KE, Kim SJ, Won JK, Kang KM, Choi SH, Sohn CH. Effect of tumor volume on the enhancement pattern of parathyroid adenoma on parathyroid four-dimensional CT. *Neuroradiology* 2016; **58**: 495-501 [PMID: 26847704 DOI: 10.1007/s00234-016-1656-3]
 - 21 **Hart PA**, Krishna SG, Okazaki K. Diagnosis and Management of Autoimmune Pancreatitis. *Curr Treat Options Gastroenterol* 2017; **15**: 538-547 [PMID: 28842855 DOI: 10.1007/s11938-017-0147-x]
 - 22 **Wakabayashi T**, Kawaura Y, Satomura Y, Fujii T, Motoo Y, Okai T, Sawabu N. Clinical study of chronic pancreatitis with focal irregular narrowing of the main pancreatic duct and mass formation: comparison with chronic pancreatitis showing diffuse irregular narrowing of the main pancreatic duct. *Pancreas* 2002; **25**: 283-289 [PMID: 12370540 DOI: 10.1097/00006676-200210000-00011]
 - 23 **Chiang AL**, Hornick JL, Sahni VA, Clancy TE, Ryou M. Autoimmune Pancreatitis Presenting as Multifocal Masses, Diagnosed on Ampullary Biopsy. *Pancreas* 2016; **45**: e25-e27 [PMID: 27295535 DOI: 10.1097/MPA.0000000000000581]
 - 24 **Mei S**, Wang M, Sun L. Contrast-Enhanced EUS for Differential Diagnosis of Pancreatic Masses: A Meta-Analysis. *Gastroenterol Res Pract* 2019; **2019**: 1670183 [PMID: 30962802 DOI: 10.1155/2019/1670183]
 - 25 **Jung JG**, Lee JK, Lee KH, Lee KT, Woo YS, Paik WH, Park DH, Lee SS, Seo DW, Lee SK, Kim MH. Comparison of endoscopic retrograde cholangiopancreatography with papillary biopsy and endoscopic ultrasound-guided pancreatic biopsy in the diagnosis of autoimmune pancreatitis. *Pancreatol* 2015; **15**: 259-264 [PMID: 25891790 DOI: 10.1016/j.pan.2015.03.011]
 - 26 **Oh D**, Song TJ, Moon SH, Kim JH, Lee NJ, Hong SM, Lee JS, Jo SJ, Cho DH, Park DH, Lee SS, Seo DW, Lee SK, Kim MH. Type 2 Autoimmune Pancreatitis (Idiopathic Duct-Centric Pancreatitis) Highlighting Patients Presenting as Clinical Acute Pancreatitis: A Single-Center Experience. *Gut Liver* 2019; **13**: 461-470 [PMID: 30970429 DOI: 10.5009/gnl18429]
 - 27 **Okazaki K**, Uchida K. Recent advances in IgG4-related disease, autoimmune pancreatitis and sclerosing cholangitis. *Nihon Rinsho* 2017; **75**: 450-454 [PMID: 30566790]
 - 28 **Momtahan AJ**, Balci NC, Alkaade S, Akduman EI, Burton FR. Focal pancreatitis mimicking pancreatic mass: magnetic resonance imaging (MRI)/magnetic resonance cholangiopancreatography (MRCP) findings including diffusion-weighted MRI. *Acta Radiol* 2008; **49**: 490-497 [PMID: 18568532 DOI: 10.1080/02841850802014602]
 - 29 **Islim F**, Salik AE, Bayramoglu S, Guven K, Alis H, Turhan AN. Non-invasive detection of infection in acute pancreatic and acute necrotic collections with diffusion-weighted magnetic resonance imaging: preliminary findings. *Abdom Imaging* 2014; **39**: 472-481 [PMID: 24441591 DOI: 10.1007/s00261-014-0076-2]
 - 30 **Park MJ**, Kim YK, Choi SY, Rhim H, Lee WJ, Choi D. Preoperative detection of small pancreatic carcinoma: value of adding diffusion-weighted imaging to conventional MR imaging for improving confidence level. *Radiology* 2014; **273**: 433-443 [PMID: 24991989 DOI: 10.1148/radiol.14132563]
 - 31 **Cheng MF**, Guo YL, Yen RF, Chen YC, Ko CL, Tien YW, Liao WC, Liu CJ, Wu YW, Wang HP. Clinical Utility of FDG PET/CT in Patients with Autoimmune Pancreatitis: a Case-Control Study. *Sci Rep* 2018; **8**: 3651 [PMID: 29483544 DOI: 10.1038/s41598-018-21996-5]
 - 32 **Nakamoto Y**, Saga T, Ishimori T, Higashi T, Mameda M, Okazaki K, Imamura M, Sakahara H, Konishi J. FDG-PET of autoimmune-related pancreatitis: preliminary results. *Eur J Nucl Med* 2000; **27**: 1835-1838 [PMID: 11189947 DOI: 10.1007/s002590000370]
 - 33 **Lauwyck J**, Piette Y, Van Walleghem L, De Geeter F. IgG4-related disease: The utility of (18)F-FDG PET/CT in diagnosis and treatment. *Hell J Nucl Med* 2015; **18** Suppl 1: 155-159 [PMID: 26672716]
 - 34 **Hafezi-Nejad N**, Singh VK, Fung C, Takahashi N, Zaheer A. MR Imaging of Autoimmune Pancreatitis. *Magn Reson Imaging Clin N Am* 2018; **26**: 463-478 [PMID: 30376982 DOI: 10.1016/j.mric.2018.03.008]



Published by **Baishideng Publishing Group Inc**
7041 Koll Center Parkway, Suite 160, Pleasanton, CA 94566, USA

Telephone: +1-925-3991568

E-mail: bpgoffice@wjgnet.com

Help Desk: <https://www.f6publishing.com/helpdesk>

<https://www.wjgnet.com>

