

World Journal of *Clinical Cases*

World J Clin Cases 2022 May 16; 10(14): 4327-4712



OPINION REVIEW

- 4327 Emerging role of biosimilars in the clinical care of inflammatory bowel disease patients
Najeeb H, Yasmin F, Surani S

MINIREVIEWS

- 4334 Practical insights into chronic management of hepatic Wilson's disease
Lynch EN, Campani C, Innocenti T, Dragoni G, Forte P, Galli A
- 4348 Adipose-derived stem cells in the treatment of hepatobiliary diseases and sepsis
Satilmis B, Cicek GS, Cicek E, Akbulut S, Sahin TT, Yilmaz S

ORIGINAL ARTICLE**Clinical and Translational Research**

- 4357 Learning curve for a surgeon in robotic pancreaticoduodenectomy through a "G"-shaped approach: A cumulative sum analysis
Wei ZG, Liang CJ, Du Y, Zhang YP, Liu Y
- 4368 Clinical and prognostic significance of expression of phosphoglycerate mutase family member 5 and Parkin in advanced colorectal cancer
Wu C, Feng ML, Jiao TW, Sun MJ

Case Control Study

- 4380 Significance of preoperative peripheral blood neutrophil-lymphocyte ratio in predicting postoperative survival in patients with multiple myeloma bone disease
Xu ZY, Yao XC, Shi XJ, Du XR

Retrospective Study

- 4395 Association between depression and malnutrition in pulmonary tuberculosis patients: A cross-sectional study
Fang XE, Chen DP, Tang LL, Mao YJ
- 4404 Pancreatic cancer incidence and mortality patterns in 2006-2015 and prediction of the epidemiological trend to 2025 in China
Yin MY, Xi LT, Liu L, Zhu JZ, Qian LJ, Xu CF
- 4414 Evaluation of short- and medium-term efficacy and complications of ultrasound-guided ablation for small liver cancer
Zhong H, Hu R, Jiang YS

- 4425** Hematopoiesis reconstitution and anti-tumor effectiveness of Pai-Neng-Da capsule in acute leukemia patients with haploidentical hematopoietic stem cell transplantation

Yuan JJ, Lu Y, Cao JJ, Pei RZ, Gao RL

- 4436** Oral and maxillofacial pain as the first sign of metastasis of an occult primary tumour: A fifteen-year retrospective study

Shan S, Liu S, Yang ZY, Wang TM, Lin ZT, Feng YL, Pakezhati S, Huang XF, Zhang L, Sun GW

- 4446** Reduced serum high-density lipoprotein cholesterol levels and aberrantly expressed cholesterol metabolism genes in colorectal cancer

Tao JH, Wang XT, Yuan W, Chen JN, Wang ZJ, Ma YB, Zhao FQ, Zhang LY, Ma J, Liu Q

Observational Study

- 4460** Correlation of pressure gradient in three hepatic veins with portal pressure gradient

Wang HY, Song QK, Yue ZD, Wang L, Fan ZH, Wu YF, Dong CB, Zhang Y, Meng MM, Zhang K, Jiang L, Ding HG, Zhang YN, Yang YP, Liu FQ

- 4470** Multi-slice spiral computed tomography in diagnosing unstable pelvic fractures in elderly and effect of less invasive stabilization

Huang JG, Zhang ZY, Li L, Liu GB, Li X

SYSTEMATIC REVIEWS

- 4480** Distribution and changes in hepatitis C virus genotype in China from 2010 to 2020

Yang J, Liu HX, Su YY, Liang ZS, Rao HY

CASE REPORT

- 4494** Bow hunter's syndrome successfully treated with a posterior surgical decompression approach: A case report and review of literature

Orlandi N, Cavallieri F, Grisendi I, Romano A, Ghadirpour R, Napoli M, Moratti C, Zanichelli M, Pascarella R, Valzania F, Zedde M

- 4502** Histological remission of eosinophilic esophagitis under asthma therapy with IL-5 receptor monoclonal antibody: A case report

Huguenot M, Bruhm AC, Essig M

- 4509** Cutaneous mucosa-associated lymphoid tissue lymphoma complicating Sjögren's syndrome: A case report and review of literature

Liu Y, Zhu J, Huang YH, Zhang QR, Zhao LL, Yu RH

- 4519** Plexiform neurofibroma of the cauda equina with follow-up of 10 years: A case report

Chomanskis Z, Juskys R, Cepkus S, Dulko J, Hendrixson V, Ruksenas O, Rocka S

- 4528** Mixed porokeratosis with a novel mevalonate kinase gene mutation: A case report

Xu HJ, Wen GD

- 4535** Isolated pancreatic injury caused by abdominal massage: A case report

Sun BL, Zhang LL, Yu WM, Tuo HF

- 4541** Bronchiolar adenoma with unusual presentation: Two case reports
Du Y, Wang ZY, Zheng Z, Li YX, Wang XY, Du R
- 4550** Periodontal-orthodontic interdisciplinary management of a “periodontally hopeless” maxillary central incisor with severe mobility: A case report and review of literature
Jiang K, Jiang LS, Li HX, Lei L
- 4563** Anesthesia management for cesarean section in a pregnant woman with odontogenic infection: A case report
Ren YL, Ma YS
- 4569** Convulsive-like movements as the first symptom of basilar artery occlusive brainstem infarction: A case report
Wang TL, Wu G, Liu SZ
- 4574** Globe luxation may prevent myopia in a child: A case report
Li Q, Xu YX
- 4580** Computer tomography-guided negative pressure drainage treatment of intrathoracic esophagojejunal anastomotic leakage: A case report
Jiang ZY, Tao GQ, Zhu YF
- 4586** Primary or metastatic lung cancer? Sebaceous carcinoma of the thigh: A case report
Wei XL, Liu Q, Zeng QL, Zhou H
- 4594** Perianesthesia emergency repair of a cut endotracheal tube’s inflatable tube: A case report
Wang TT, Wang J, Sun TT, Hou YT, Lu Y, Chen SG
- 4601** Diagnosis of cytomegalovirus encephalitis using metagenomic next-generation sequencing of blood and cerebrospinal fluid: A case report
Xu CQ, Chen XL, Zhang DS, Wang JW, Yuan H, Chen WF, Xia H, Zhang ZY, Peng FH
- 4608** Primary sigmoid squamous cell carcinoma with liver metastasis: A case report
Li XY, Teng G, Zhao X, Zhu CM
- 4617** Acute recurrent cerebral infarction caused by moyamoya disease complicated with adenomyosis: A case report
Zhang S, Zhao LM, Xue BQ, Liang H, Guo GC, Liu Y, Wu RY, Li CY
- 4625** Serum-negative Sjogren's syndrome with minimal lesion nephropathy as the initial presentation: A case report
Li CY, Li YM, Tian M
- 4632** Successful individualized endodontic treatment of severely curved root canals in a mandibular second molar: A case report
Xu LJ, Zhang JY, Huang ZH, Wang XZ

- 4640** Successful treatment in one myelodysplastic syndrome patient with primary thrombocytopenia and secondary deep vein thrombosis: A case report
Liu WB, Ma JX, Tong HX
- 4648** Diagnosis of an extremely rare case of malignant adenomyoepithelioma in pleomorphic adenoma: A case report
Zhang WT, Wang YB, Ang Y, Wang HZ, Li YX
- 4654** Management about intravesical histological transformation of prostatic mucinous carcinoma after radical prostatectomy: A case report
Bai SJ, Ma L, Luo M, Xu H, Yang L
- 4661** Hepatopulmonary metastases from papillary thyroid microcarcinoma: A case report
Yang CY, Chen XW, Tang D, Yang WJ, Mi XX, Shi JP, Du WD
- 4669** PD-1 inhibitor in combination with fruquintinib therapy for initial unresectable colorectal cancer: A case report
Zhang HQ, Huang CZ, Wu JY, Wang ZL, Shao Y, Fu Z
- 4676** Cutaneous metastasis from esophageal squamous cell carcinoma: A case report
Zhang RY, Zhu SJ, Xue P, He SQ
- 4684** Rare pattern of Maisonneuve fracture: A case report
Zhao B, Li N, Cao HB, Wang GX, He JQ
- 4691** Suprasellar cistern tuberculoma presenting as unilateral ocular motility disorder and ptosis: A case report
Zhao BB, Tian C, Fu LJ, Zhang XB
- 4698** Development of plasma cell dyscrasias in a patient with chronic myeloid leukemia: A case report
Zhang N, Jiang TD, Yi SH
- 4704** Ovarian growing teratoma syndrome with multiple metastases in the abdominal cavity and liver: A case report
Hu X, Jia Z, Zhou LX, Kakongoma N

LETTER TO THE EDITOR

- 4709** Perfectionism and mental health problems: Limitations and directions for future research
Nazari N

ABOUT COVER

Editorial Board Member of *World Journal of Clinical Cases*, Jamir Pitton Rissardo, MD, Academic Research, Adjunct Associate Professor, Research Associate, Department of Medicine, Federal University of Santa Maria, Santa Maria 97105110, Brazil. jamirrissardo@gmail.com

AIMS AND SCOPE

The primary aim of *World Journal of Clinical Cases* (WJCC, *World J Clin Cases*) is to provide scholars and readers from various fields of clinical medicine with a platform to publish high-quality clinical research articles and communicate their research findings online.

WJCC mainly publishes articles reporting research results and findings obtained in the field of clinical medicine and covering a wide range of topics, including case control studies, retrospective cohort studies, retrospective studies, clinical trials studies, observational studies, prospective studies, randomized controlled trials, randomized clinical trials, systematic reviews, meta-analysis, and case reports.

INDEXING/ABSTRACTING

The WJCC is now indexed in Science Citation Index Expanded (also known as SciSearch®), Journal Citation Reports/Science Edition, Scopus, PubMed, and PubMed Central. The 2021 Edition of Journal Citation Reports® cites the 2020 impact factor (IF) for WJCC as 1.337; IF without journal self cites: 1.301; 5-year IF: 1.742; Journal Citation Indicator: 0.33; Ranking: 119 among 169 journals in medicine, general and internal; and Quartile category: Q3. The WJCC's CiteScore for 2020 is 0.8 and Scopus CiteScore rank 2020: General Medicine is 493/793.

RESPONSIBLE EDITORS FOR THIS ISSUE

Production Editor: Hua-Ge Yin, Production Department Director: Xu Guo, Editorial Office Director: Jin-Lei Wang.

NAME OF JOURNAL

World Journal of Clinical Cases

ISSN

ISSN 2307-8960 (online)

LAUNCH DATE

April 16, 2013

FREQUENCY

Thrice Monthly

EDITORS-IN-CHIEF

Bao-Gan Peng, Jerzy Tadeusz Chudek, George Kontogeorgos, Maurizio Serati, Ja Hyeon Ku

EDITORIAL BOARD MEMBERS

<https://www.wjgnet.com/2307-8960/editorialboard.htm>

PUBLICATION DATE

May 16, 2022

COPYRIGHT

© 2022 Baishideng Publishing Group Inc

INSTRUCTIONS TO AUTHORS

<https://www.wjgnet.com/bpg/gerinfo/204>

GUIDELINES FOR ETHICS DOCUMENTS

<https://www.wjgnet.com/bpg/GerInfo/287>

GUIDELINES FOR NON-NATIVE SPEAKERS OF ENGLISH

<https://www.wjgnet.com/bpg/gerinfo/240>

PUBLICATION ETHICS

<https://www.wjgnet.com/bpg/GerInfo/288>

PUBLICATION MISCONDUCT

<https://www.wjgnet.com/bpg/gerinfo/208>

ARTICLE PROCESSING CHARGE

<https://www.wjgnet.com/bpg/gerinfo/242>

STEPS FOR SUBMITTING MANUSCRIPTS

<https://www.wjgnet.com/bpg/GerInfo/239>

ONLINE SUBMISSION

<https://www.f6publishing.com>



Observational Study

Correlation of pressure gradient in three hepatic veins with portal pressure gradient

Hao-Yu Wang, Qing-Kun Song, Zhen-Dong Yue, Lei Wang, Zhen-Hua Fan, Yi-Fan Wu, Cheng-Bin Dong, Yu Zhang, Ming-Ming Meng, Ke Zhang, Li Jiang, Hui-Guo Ding, Yue-Ning Zhang, Yong-Ping Yang, Fu-Quan Liu

Specialty type: Medicine, research and experimental

Provenance and peer review: Unsolicited article; Externally peer reviewed.

Peer-review model: Single blind

Peer-review report's scientific quality classification

Grade A (Excellent): 0
Grade B (Very good): B
Grade C (Good): C, C
Grade D (Fair): D
Grade E (Poor): E

P-Reviewer: Kim DJ, South Korea; Marra P, Italy; Tripathi D, United Kingdom; Yoshida H, Japan

Received: November 26, 2021

Peer-review started: November 26, 2021

First decision: January 11, 2022

Revised: January 25, 2022

Accepted: March 26, 2022

Article in press: March 26, 2022

Published online: May 16, 2022



Hao-Yu Wang, Department of Oncology, The 9th Clinical Medical College & Beijing Shijitan Hospital, Peking University, Beijing 100038, China

Qing-Kun Song, Division of Clinical Epidemiology and Evidence-Based Medicine, Beijing Shijitan Hospital, Capital Medical University, Beijing 100038, China

Zhen-Dong Yue, Lei Wang, Zhen-Hua Fan, Yi-Fan Wu, Cheng-Bin Dong, Yu Zhang, Department of Interventional Therapy, Beijing Shijitan Hospital, Capital Medical University, Beijing 100038, China

Ming-Ming Meng, Department of Gastroenterology, Beijing Shijitan Hospital, Capital Medical University, Beijing 100038, China

Ke Zhang, Li Jiang, Department of General Surgery, Beijing Ditan Hospital, Capital Medical University, Beijing 100102, China

Hui-Guo Ding, Yue-Ning Zhang, Department of Gastroenterology and Hepatology, Beijing You'an Hospital, Capital Medical University, Beijing 100069, China

Yong-Ping Yang, Department of Therapeutic Research for Liver Cancer, The Fifth Medical Center of Chinese PLA General Hospital, Beijing 100039, China

Fu-Quan Liu, Department of Oncology, The 9th Clinical Medical College & Beijing Shijitan Hospital, Peking University, Beijing 100038, China

Corresponding author: Fu-Quan Liu, BCPS, MD, Director, Professor, Department of Interventional Therapy, Beijing Shijitan Hospital, Capital Medical University, No. 10 Tieyi Road, Yangfangdian, Haidian District, Beijing 100038, China. lfuquan@aliyun.com

Abstract

BACKGROUND

The liver is one of the most important organs in the human body, with functions such as detoxification, digestion, and blood coagulation. In terms of vascular anatomy, the liver is divided into the left and the right liver by the main portal vein, and there are three hepatic efferent veins (right, middle, and left) and two portal branches. Patients with impaired liver function have increased intrahepatic vascular resistance and splanchnic vasodilation, which may lead to an increase in

the portal pressure gradient (PPG) and cause portal hypertension (PHT). In order to measure the increased pressure gradient of portal vein, the hepatic venous pressure gradient (HVPG) can be measured to reflect it in clinical practice. The accuracy of PPG measurements is directly related to patient prognosis.

AIM

To analyze the correlation between HVPG of three hepatic veins and PPG in patients with PHT.

METHODS

From January 2017 to December 2019, 102 patients with PHT who met the inclusion criteria were evaluated during the transjugular intrahepatic portosystemic shunt procedure and analyzed.

RESULTS

The mean HVPG of the middle hepatic vein was 17.47 ± 10.25 mmHg, and the mean HVPG of the right and left hepatic veins was 16.34 ± 7.60 and 16.52 ± 8.15 mmHg, respectively. The average PPG was 26.03 ± 9.24 mmHg. The correlation coefficient and coefficient of determination of the right hepatic vein, middle hepatic vein, and left hepatic vein were 0.15 and 0.02 ($P = 0.164$); 0.25 and 0.05 ($P = 0.013$); and 0.14 and 0.02 ($P = 0.013$), respectively. The mean wedged hepatic vein/venous pressure (WHVP) of the middle and left hepatic veins was similar at 29.71 ± 12.48 and 29.1 ± 10.91 mmHg, respectively, and the mean WHVP of the right hepatic vein was slightly lower at 28.01 ± 8.95 mmHg. The mean portal vein pressure was 34.11 ± 8.56 mmHg. The correlation coefficient and coefficient of determination of the right hepatic vein, middle hepatic vein, and left hepatic vein were 0.26 and 0.07 ($P = 0.009$); 0.38 and 0.15 ($P < 0.001$); and 0.26 and 0.07 ($P = 0.008$), respectively. The average free hepatic venous pressure (FHVP) of the right hepatic vein was lowest at 11.67 ± 5.34 mmHg, and the average FHVP of the middle and left hepatic veins was slightly higher at 12.19 ± 4.88 and 11.67 ± 5.34 mmHg, respectively. The average inferior vena cava pressure was 8.27 ± 4.04 mmHg. The correlation coefficient and coefficient of determination of the right hepatic vein, middle hepatic vein, and left hepatic vein were 0.30 and 0.09 ($P = 0.002$); 0.18 and 0.03 ($P = 0.078$); and 0.16 and 0.03 ($P = 0.111$), respectively.

CONCLUSION

Measurement of the middle hepatic vein HVPG could better represent PPG. Considering the high success rate of clinical measurement of the right hepatic vein, it can be the second choice.

Key Words: Portal hypertension; Portal pressure gradient; Hepatic venous pressure gradient; Free hepatic venous pressure

©The Author(s) 2022. Published by Baishideng Publishing Group Inc. All rights reserved.

Core Tip: Portal hypertension (PHT) is a serious complication of various liver diseases, including cirrhosis, with a high mortality rate. To improve its prognosis, methods to accurately measure the magnitude of the increase in portal pressure are needed. This study compared and analyzed the relationship between hepatic venous pressure gradient of three hepatic veins and portal pressure gradient in 102 patients with PHT, aiming to find out the hepatic vein pressure gradient branch that best represents the patients' actual portal vein pressure gradient in clinic.

Citation: Wang HY, Song QK, Yue ZD, Wang L, Fan ZH, Wu YF, Dong CB, Zhang Y, Meng MM, Zhang K, Jiang L, Ding HG, Zhang YN, Yang YP, Liu FQ. Correlation of pressure gradient in three hepatic veins with portal pressure gradient. *World J Clin Cases* 2022; 10(14): 4460-4469

URL: <https://www.wjgnet.com/2307-8960/full/v10/i14/4460.htm>

DOI: <https://dx.doi.org/10.12998/wjcc.v10.i14.4460>

INTRODUCTION

The elevated pressure in portal hypertension (PHT) refers to the pressure gradient between the portal vein and the systemic circulation, and is mainly characterized by increased intrahepatic vascular resistance, varicose veins, and bleeding caused by splanchnic vasodilation. The main cause of PHT is liver cirrhosis, which has a high mortality rate as it is a serious complication. In addition, the increased venous pressure gradient in the absence of known liver disease is termed noncirrhotic PHT and is

usually caused by vascular liver disease[1]. The clinical symptoms and prognosis of PHT are directly related to the degree of portal pressure, but it is difficult and risky to measure portal pressure directly. The hepatic venous pressure gradient [HVPG = wedged hepatic vein/venous pressure (WHVP) - free hepatic venous pressure (FHVP)] is used in clinical studies as the "gold standard" for indirectly reflecting portal venous pressure (PVP) and is a simple and low-risk technique[2]. Theoretically, HVPG indirectly represents the difference between PVP and inferior vena cava pressure (IVCP) [portal pressure gradient (PPG) = PVP - IVCP]. There are few reports on whether HVPG accurately represents PPG in real-world measurements. In this study, we carried out actual measurements of three hepatic veins related to this issue. From January 2017 to December 2019, 102 patients with PHT who met the enrollment criteria were included in this study and measurements of the three hepatic veins and various other pressures were carried out during the transjugular intrahepatic portosystemic shunt (TIPS) procedure and analyzed.

MATERIALS AND METHODS

Basic information

The pressure of three hepatic veins was measured during the TIPS procedure in 102 patients with PHT who met the inclusion criteria from January 2017 to December 2019 and analyzed. The mean age of the 102 cases was 54.42 ± 12.37 years, of which 67 (mean age 50.28 ± 11.63 years) were male (65.7%) and 35 (mean age 61.87 ± 10.07 years) were female (34.3%). The cause of PHT was hepatitis B cirrhosis in 43 cases, hepatitis C cirrhosis in 8, hepatitis B + C cirrhosis in 1, alcoholic cirrhosis in 12, autoimmune cirrhosis in 7, cholestatic cirrhosis in 6, drug-induced cirrhosis in 2, idiopathic PHT in 5, small hepatic vein occlusion syndrome in 14, and hepatic sinusoidal occlusion syndrome in 4. There were 67 cases of gastrointestinal bleeding, accounting for 68.3%, intractable ascites/pleural ascites in 15 cases, accounting for 14.7%, and gastrointestinal bleeding complicated by intractable ascites in 6 (5.9%). Other conditions included 14 cases of bruising jaundice, severe liver bruising combined with ascites, hepatorenal syndrome, and severe esophagogastric varices. Child-Pugh classification was grade A in 49 cases, grade B in 34, and grade C in 19.

Inclusion criteria

The inclusion criteria were: (1) Patients eligible for TIPS surgery; (2) aged 18-75 years old; (3) TIPS patients scheduled for elective surgery; (4) normal anatomy of the hepatic vein and inferior vena cava; and (5) successful simultaneous measurement of pressure in three hepatic veins.

Exclusion criteria

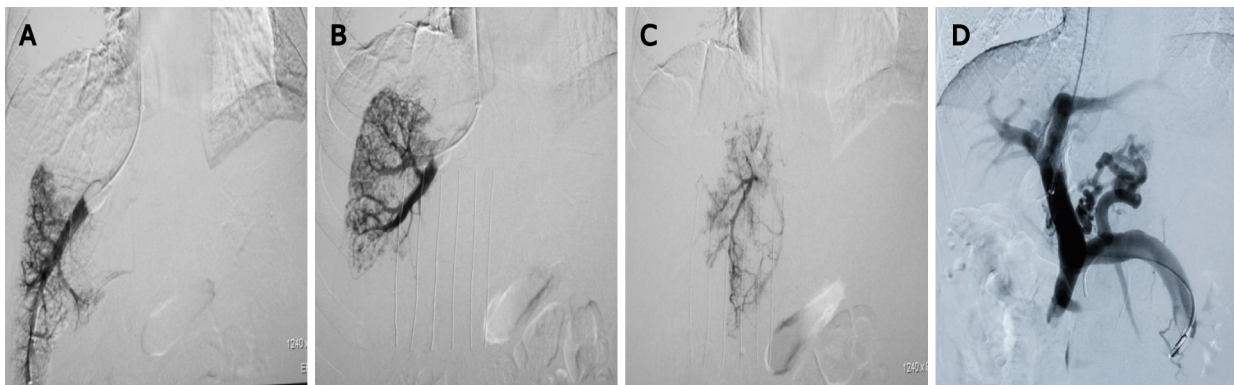
The exclusion criteria were: (1) Patients with tumors; (2) patients with portal vein thrombosis (generally more than 1/2 of the diameter of the main portal vein); (3) application of drugs affecting portal vein pressure within the previous week; and (4) intraoperative factors affecting the accuracy of manometry, *e.g.*, bile heart reflex and incomplete balloon closure.

Pre-operative preparation

The following preoperative tests were conducted: Routine blood, liver and kidney function, ICG-R15 (quantitative liver function test-indocyanine green 15-min retention rate), blood ammonia, blood group, electrocardiogram, coagulation, liver vascular ultrasound, cardiac ultrasound, and abdominal computed tomography and/or magnetic resonance enhancement, appropriate adjustment of coagulation function, platelet count, bilirubin, albumin, and hemoglobin for interventional procedures. The results and risks of the procedure were explained to the patients and their family, and signed consent for the operation protocol was obtained. Medications affecting portal pressure were discontinued for at least 1 week prior to surgery.

Pressure measurement methods

Local routine disinfection drapes were placed. Under local anesthesia, the right internal jugular vein was punctured and the RUPS-100 set (COOK, United States) placed into the right atrium and inferior vena cava to measure pressure. A Fogarty balloon catheter (Edwards, United States) was inserted into the right, middle, and left hepatic veins, respectively, and the balloon catheter tip was placed in the hepatic vein approximately 1-5 cm from the opening of the inferior vena cava. WHVP and FHVP were measured before and after the balloon was dilated to occlude the hepatic vein (5 mL of contrast agent was injected). When the pressure was stable, the value was recorded, the pressure was measured 3 times, the average value was noted, and then the HVPG value was calculated (Figure 1A-C). After measurement, balloon-blocking compression hepatic venography was performed (the total amount of contrast agent was 15 mL, 5 mL/s, pressure 300 psi), and both WHVP and FHVP were measured again after administration of contrast agent. Occlusion of the balloon catheter was observed after the balloon was expanded and the balloon catheter position was adjusted for retesting and imaging if there was



DOI: 10.12998/wjcc.v10.i14.4460 Copyright ©The Author(s) 2022.

Figure 1 Various pressures measured during transjugular intrahepatic portosystemic shunt in the same patient. A: Balloon blocking vein and hand pushing of 5 mL contrast medium. Right hepatic vein wedged hepatic vein/venous pressure (WHVP) = 31 mmHg, free hepatic venous pressure (FHVP) = 13 mmHg, and hepatic venous pressure gradient (HVPG) = 18 mmHg; B: Balloon blocking vein and hand pushing of 5 mL of contrast medium. Middle hepatic vein WHVP = 41 mmHg, FHVP = 14 mmHg, and HVPG = 27 mmHg; C: Balloon blocking vein and hand pushing of 5 mL of contrast medium. Left hepatic vein WHVP = 51 mmHg, FHVP = 14 mmHg, and HVPG = 37 mmHg; D: Portal venography and pressure measurement during transjugular intrahepatic portosystemic shunt. Portal vein pressure = 52 mmHg, inferior vena cava pressure = 12 mmHg, and portal pressure gradient = 40 mmHg.

poor blockage. The liver parenchyma and portal vein were punctured through the inferior vena cava or hepatic vein. After successful puncture of the portal vein, the pigtail or end-to-side hole catheter was inserted into the splenic vein or superior mesenteric vein for intravenous angiography. Before shunting, pressure in the portal vein was measured (3 measurements, averaged), and the PPG value was calculated (Figure 1D). After that, liver tissue in the pre-shunt channel was obtained, the shunt channel was established, the post-shunt portal trunk pressure was measured (3 measurements, averaged), and the PPG value was calculated. Postoperatively, an indwelling catheter was inserted into the portal vein for at least 48 h and the portal pressure was measured at least 3 times daily. The IVCP and right atrial pressure were measured three times during extubation, respectively, and the average value was taken [3].

Statistical analysis

SPSS 17.0 software was used for statistical analyses. The differences between PPG and HVPG, WHVP and PVP, and FHVP and IVCP were analyzed using paired *t*-tests, and the correlations between them were analyzed using Pearson correlation tests to estimate correlations and coefficients of determination. $P < 0.05$ was considered statistically significant.

RESULTS

Relationship between HVPG and PPG

The mean HVPG of the three hepatic veins (right, middle, and left) was 16.34 ± 7.60 , 17.47 ± 10.25 , and 16.52 ± 8.15 mmHg, respectively. Mean PPG was 26.03 ± 9.24 mmHg. By Pearson correlation analysis, the correlation coefficients and coefficients of determination between HVPG and PPG in the right, middle, and left hepatic veins were 0.15 and 0.02 ($P = 0.132$); 0.25 and 0.05 ($P = 0.013$); and 0.14 and 0.02 ($P = 0.164$), respectively (Table 1).

The maximum HVPG was higher than PPG in the right, middle, and left hepatic veins, which was 14 mmHg, 24 mmHg, and 37 mmHg, respectively, and the maximum PPG was higher than HVPG, which was 43.67 mmHg, 43 mmHg, and 44 mmHg, respectively. The difference between HVPG and PPG was within 5 mmHg in 38 cases (37.25%) on the right side of the liver, in 33 (32.35%) in the middle of the liver, and in 29 (28.43%) on the left side of the liver. The difference between HVPG and PPG was more than 5 mmHg in 64 cases on the right side of the liver, accounting for 62.75%, in 69 in the middle of the liver, accounting for 67.65%, and in 73 on the left side of the liver, accounting for 71.57% (Figure 2).

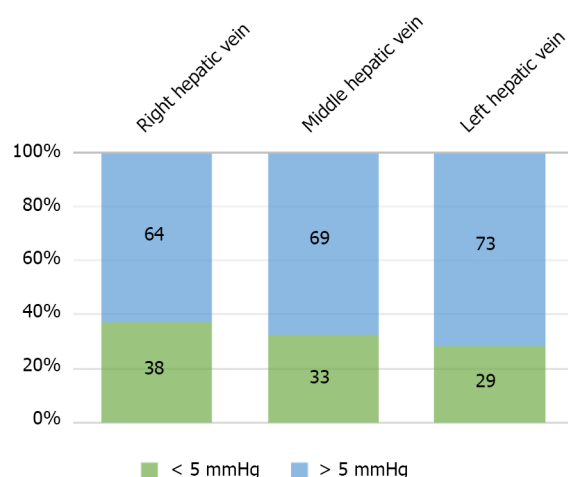
Relationship between WHVP and PVP

The average WHVP of the right hepatic vein was 28.01 ± 8.95 mmHg, the average WHVP of the middle hepatic vein was 29.71 ± 12.48 mmHg, and the average WHVP of the left hepatic vein was 29.1 ± 10.91 mmHg. The average PVP was 34.11 ± 8.56 mmHg. Following Pearson correlation analysis, the correlation coefficients and coefficients of determination between WHVP and PVP for the right, middle, and left hepatic veins were 0.26 and 0.07 ($P = 0.009$); 0.38 and 0.15 ($P < 0.001$); and 0.26 and 0.07 ($P = 0.008$), respectively (Table 1).

Table 1 Relationship between hepatic venous pressure gradient and portal pressure gradient, between wedged hepatic vein/venous pressure and portal vein pressure, and between free hepatic venous pressure and inferior vena cava pressure of three hepatic veins

	A-HVPG and PPG			B-WHVP and PVP			C-FHVP and IVCP		
Hepatic vein	Right	Middle	Left	Right	Middle	Left	Right	Middle	Left
Correlation coefficient	0.15	0.25	0.14	0.26	0.38	0.26	0.30	0.18	0.16
Decisive factor	0.02	0.05	0.02	0.07	0.15	0.07	0.09	0.03	0.03
<i>P</i> value	0.164	0.013	0.013	0.009	< 0.001	0.008	0.002	0.078	0.111

HVPG: Hepatic venous pressure gradient; PPG: Portal pressure gradient; WHVP: Wedged hepatic vein/venous pressure; PVP: Portal vein pressure; FHVP: Free hepatic venous pressure; IVCP: Inferior vena cava pressure.



DOI: 10.12998/wjcc.v10.i14.4460 Copyright ©The Author(s) 2022.

Figure 2 Difference between hepatic venous pressure gradient and portal pressure gradient.

The maximum WHVP was higher than PVP in the right liver, middle liver, and left liver and was 14 mmHg, 28 mmHg, and 40 mmHg, respectively, and the maximum PVP was higher than WHVP, which was 43.67 mmHg, 32 mmHg, and 40.67 mmHg, respectively. The difference between WHVP and PVP was within 5 mmHg in 48 cases on the right side of the liver, accounting for 47.06%, in 43 in the middle of the liver, accounting for 42.16%, and in 45 on the left side of the liver, accounting for 44.12%. The difference between WHVP and PVP was more than 5 mmHg in 54 cases on the right side of the liver, accounting for 52.94%, in 59 in the middle of the liver, accounting for 57.84%, and in 57 on the left side of the liver, accounting for 55.88% (Figure 3).

Relationship between FHVP and IVCP

The average FHVP was 11.67 ± 5.34 mmHg for the right hepatic vein, 12.19 ± 4.88 mmHg for the middle hepatic vein, and 12.64 ± 4.99 mmHg for the left hepatic vein. Average IVCP was 8.27 ± 4.04 mmHg. The correlation coefficients and coefficients of determination between the right hepatic, middle hepatic, and left hepatic venous FHVP and IVCP were 0.30 and 0.09 ($P = 0.002$); 0.18 and 0.03 ($P = 0.078$); and 0.16 and 0.03 ($P = 0.111$), respectively (Table 1).

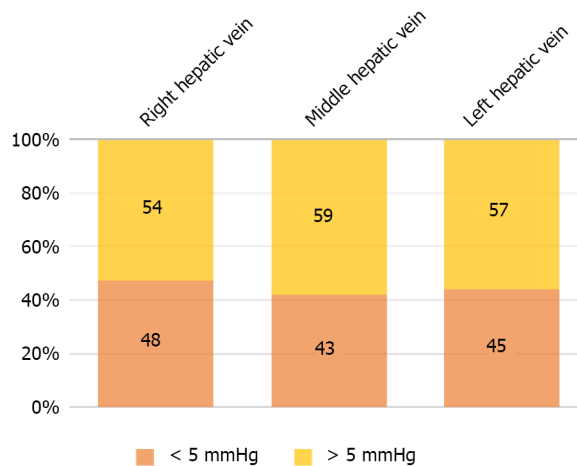
There were 16 (15.7%), 18 (17.6%), and 22 cases (21.6%) with collaterals in the right, middle, and left hepatic vein angiography of the balloon blocked liver, respectively (Figure 4A). The average HVPG was (8.02 ± 6.58) mmHg, (14.36 ± 6.65) mmHg, and (12.09 ± 5.36) mmHg. The average PPG was (26.13 ± 9.97) mmHg, (29.67 ± 7.96) mmHg, and (29.68 ± 8.77) mmHg ($P < 0.001$); the average WHVP was (19.81 ± 8.18) mmHg, (24.62 ± 6.26) mmHg, and (23.26 ± 6.77) mmHg. The average PVP was (35.56 ± 9.86) mmHg, (37.72 ± 7.79) mmHg, and (37.86 ± 8.40) mmHg ($P < 0.001$). The average FHVP was (11.79 ± 4.46) mmHg, (10.26 ± 3.07) mmHg, and (11.17 ± 4.20) mmHg, and the average IVCP was (9.44 ± 2.68) mmHg, (8.06 ± 3.23) mmHg, and (8.18 ± 3.19) mmHg, respectively, and the differences were statistically significant ($P < 0.001$) (Table 2).

Balloon occlusion of the right, middle, and left hepatic veins without collaterals (Figure 4B) was seen in 86 (84.3%), 84 (82.4%), and 80 cases (78.4%), respectively. The average HVPG was (18.64 ± 6.33) mmHg, (18.68 ± 8.47) mmHg, and (18.34 ± 7.21) mmHg. The average PPG was (25.33 ± 8.90) mmHg,

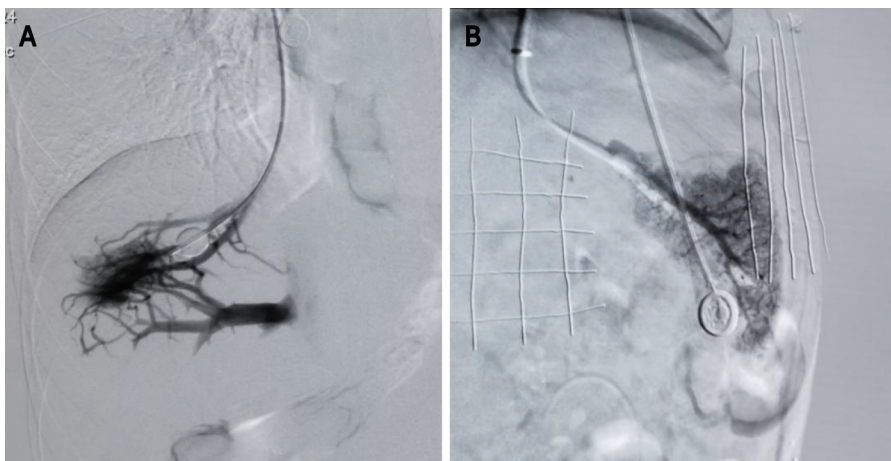
Table 2 Presence of collateral branches in balloon occlusion of hepatic vein angiography

Hepatic vein	HVPG	PPG	WHVP	PVP	FHVP	IVCP
Right (mmHg)	8.02 ± 6.58	26.13 ± 9.97	19.81 ± 8.18	35.56 ± 9.86	11.79 ± 4.46	9.44 ± 2.68
Middle (mmHg)	14.36 ± 6.65	29.67 ± 7.96	24.62 ± 6.26	37.72 ± 7.79	10.26 ± 3.07	8.06 ± 3.23
Left (mmHg)	12.09 ± 5.36	29.68 ± 8.77	23.26 ± 6.77	37.86 ± 8.40	11.17 ± 4.20	8.18 ± 3.19

HVPG: Hepatic venous pressure gradient; PPG: Portal pressure gradient; WHVP: Wedged hepatic vein/venous pressure; PVP: Portal vein pressure; FHVP: Free hepatic venous pressure; IVCP: Inferior vena cava pressure.



DOI: 10.12998/wjcc.v10.i14.4460 Copyright ©The Author(s) 2022.

Figure 3 Difference between wedged hepatic vein/venous pressure and portal vein pressure.

DOI: 10.12998/wjcc.v10.i14.4460 Copyright ©The Author(s) 2022.

Figure 4 Balloon occlusion. A: Balloon occlusion of right hepatic vein angiography showed the formation of collateral branches of the hepatic vein; B: Balloon occlusion of left hepatic vein angiography showed that there was no collateral formation of the hepatic vein.

(24.55 ± 9.03) mmHg, and (24.29 ± 8.80) mmHg ($P < 0.001$); the average WHVP was (30.14 ± 7.52) mmHg, (30.74 ± 10.10) mmHg, and (30.75 ± 9.45) mmHg. The average PVP was (33.60 ± 8.06) mmHg, (33.10 ± 8.28) mmHg, and (32.83 ± 8.05) mmHg ($P < 0.001$); the average FHVP was (11.50 ± 4.87) mmHg, (12.06 ± 4.21) mmHg, and (12.40 ± 4.29) mmHg, and the average IVCP was (8.28 ± 3.93) mmHg, (8.55 ± 3.90) mmHg, and (8.54 ± 3.94) mmHg, respectively, and the differences were statistically significant ($P < 0.001$) (Table 3).

Table 3 Balloon occlusion of hepatic vein angiography without collaterals

Hepatic vein	HVPG	PPG	WHVP	PVP	FHVP	IVCP
Right (mmHg)	18.64 ± 6.33	25.33 ± 8.90	30.14 ± 7.52	33.60 ± 8.06	11.50 ± 4.87	8.28 ± 3.93
Middle (mmHg)	18.68 ± 8.47	24.55 ± 9.03	30.74 ± 10.10	33.10 ± 8.28	12.06 ± 4.21	8.55 ± 3.90
Left (mmHg)	18.34 ± 7.21	24.29 ± 8.80	30.75 ± 9.45	32.83 ± 8.05	12.40 ± 4.29	8.54 ± 3.94

HVPG: Hepatic venous pressure gradient; PPG: Portal pressure gradient; WHVP: Wedged hepatic vein/venous pressure; PVP: Portal vein pressure; FHVP: Free hepatic venous pressure; IVCP: Inferior vena cava pressure.

DISCUSSION

The liver has a dual blood supply, with blood from the hepatic artery and portal vein entering the hepatic sinusoids and returning to the hepatic vein. Under normal conditions, the hemodynamics are in equilibrium, and generally the PVP is higher than or equal to the hepatic sinusoidal pressure, and WHVP represents the hepatic sinusoidal pressure. Generally FHVP is 0.5-1.0 mmHg higher than IVCP [4,5]. Normally HVPG is approximately equal to PPG and indirectly represents the perfusion pressure in the portal vein. Patients with PHT, especially cirrhotic PHT, have significant changes in liver tissue, blood vessels, and other structures, resulting in changes in local and body hemodynamics, the main features of which are visceral vasodilation and increased total blood volume [6]. Therefore, whether the changes in various vascular pressures in patients with PHT are consistent with normal hepatic vascular pressures has been shown to be controversial [7]. Studies have suggested that PPG is more meaningful than PVP in predicting the prognosis of PHT [4,5,7,8]. The importance of HVPG in diagnosing the etiology of PHT [9,10], in predicting the prognosis of chronic liver disease [10], in predicting gastrointestinal bleeding [11], in determining patient prognosis [8], in determining the efficacy of drugs [12], in the development of primary hepatocellular carcinoma, and in surgical prognosis [13-15] has been reported in the literature, based on the theoretical HVPG as the "gold standard" indirectly representing PPG or separate studies on HVPG.

Limited reports show a correlation between WHVP and PVP in patients with hepatitis cirrhosis and alcoholic cirrhosis, with fewer national studies [4,7,16,17]. A poor correlation between WHVP and PVP has been reported for large nodular cirrhosis [18]. The reasons for WHVP being lower than PVP are related to hepatic vein collateral shunts. The reason for the higher WHVP than PVP is unclear and may be related to reverse hepatic flow, opening of the accessory umbilical vein, portal anastomotic branch [16,17], and gastrosplenic shunt [19]. The above study focused on data measured in a single hepatic vein (right hepatic vein). Non-cirrhotic PHT is generally acute or subacute, and is usually caused by vascular liver diseases such as hepatic sinusoidal obstruction syndrome [20], idiopathic PHT [1], and Budd-Chiari syndrome. The main clinical manifestations are ascites and variceal hemorrhage. Moreover, in contrast to cirrhotic PHT, the collateral circulation is not established [20]. HVPG, as a standard for measuring portal pressure, can accurately measure sinus PHT; however, it has been reported that for patients with a presinusoidal type of PHT, if the balloon is inflated below the vein-to-vein shunt, the measured HVPG can still accurately represent portal pressure [1].

The present study measured three hepatic veins in the same patient and showed that the correlation between WHVP and PVP was poor in all three hepatic veins, the right hepatic vein was similar to the left hepatic vein, and the middle hepatic vein was slightly better. The correlation between HVPG and PPG was poor in all three hepatic veins, the middle hepatic vein was better than the other two types, and the right hepatic vein and the left hepatic vein were similar. The mean WHVP with hepatic vein collateral branches was significantly lower than the mean PVP, suggesting that hepatic vein collateral branches severely affect and underestimate WHVP. The mean HVPG of the three hepatic veins was also significantly lower than the mean PPG. The mean WHVP without hepatic vein collateral branches and the mean PVP of the three hepatic veins were also lower than the mean PVP. The mean HVPG of the three hepatic veins was also lower than the mean PPG; the correlation between the FHVP and IVCP of the right hepatic vein was better, and the literature reported better stability of FHVP and IVCP [16,17,19]. During the measurement of WHVP, FHVP, IVCP, PVP, HVPG, and PPG, some drugs or measurement methods may affect the accuracy of monitoring results, such as non-selective beta-blockers, which have an effect on PVP [21], propofol deep sedation has a huge effect on the patient's PPG [22], the bile heart reflex during TIPS as well as the position and thickness of the measurement catheter may affect the accuracy of PVP, and the position of the catheter and the thickness of the hepatic vein wall during the measurement of WHVP and FHVP may have some influence on the pressure measurement results [4,5]. The effects of the preoperative application of growth inhibitors and their analogs, posterior pituitary hormones, and terlipressin on manometry are unclear. In this study, the unity of subjective factors was particularly emphasized, including preoperative treatment, balloon occlusion method to determine WHVP, measurement site, patient's respiratory activity, drug application, *etc.*, to exclude various factors that affect the accuracy of pressure measurement.

CONCLUSION

In summary, the results of this study show that the correlations between WHVP and PVP, as well as between HVPG and PPG are poor in all three hepatic veins, but they are both highest in the middle hepatic vein with a basic compliance rate (within 5 mmHg difference) of 47.06% and 37.25%, respectively. The measurement of pressure in the middle hepatic vein could better represent the pressure in the left and right hepatic veins. However, in practice, the right hepatic vein is relatively thicker in its course and has a higher success rate. In addition, hepatic vein collateral branches are an important cause of inaccuracy. The correlations between WHVP and PVP as well as between HVPG and PPG are also poor in patients without hepatic vein collateral branches. And the reasons for the generation of WHVP over PVP and HVPG over PPG are unclear. These issues need to be studied in depth.

ARTICLE HIGHLIGHTS

Research background

The prognosis of portal hypertension (PHT) with high mortality is directly related to the accuracy of the measured portal pressure.

Research motivation

To improve the prognosis of PHT.

Research objectives

To identify which of the three hepatic veins that can more accurately represent portal pressure.

Research methods

The pressure in three hepatic veins in 102 patients with PHT of different etiologies was measured and compared with their mean portal pressure.

Research results

Correlation of portal pressure gradient (PPG) and hepatic venous pressure gradient is higher in the middle hepatic vein.

Research conclusions

The measurement of pressure in the middle hepatic vein could better represent PPG than the pressure in the left and right hepatic veins.

Research perspectives

Considering the high success rate of clinical measurement of the right hepatic vein, it can be the second choice.

FOOTNOTES

Author contributions: Liu FQ, Yue ZD, and Wang L contributed to the conception of the study; Liu FQ and Fan ZH performed the experiments; Wang HY, Meng MM, Zhang K, Jiang L, Ding HD, Zhang YN, and Yang YP contributed significantly to data analysis and manuscript preparation; Wang HY and Song QK performed the data analyses and wrote the manuscript; Wu YF, Dong CB, and Zhang Y helped perform the data analysis.

Supported by Special Scientific Research Project for Health Development in the Capital, No. 2018-1-2081; and Scientific Research Common Program of Beijing Municipal Commission of Education, No. KM201810025028.

Institutional review board statement: The study was reviewed and approved by the Beijing Shijitan Hospital Institutional Review Board.

Conflict-of-interest statement: The authors have no conflicts of interest to declare.

Data sharing statement: Technical appendix, statistical code, and dataset available from the corresponding author atlfuquan@aliyun.com.cn. Participants gave informed consent for data sharing. No additional data are available.

STROBE statement: The authors have read the STROBE Statement—checklist of items, and the manuscript was prepared and revised according to the STROBE Statement—checklist of items.

Open-Access: This article is an open-access article that was selected by an in-house editor and fully peer-reviewed by external reviewers. It is distributed in accordance with the Creative Commons Attribution NonCommercial (CC BY-NC 4.0) license, which permits others to distribute, remix, adapt, build upon this work non-commercially, and license their derivative works on different terms, provided the original work is properly cited and the use is non-commercial. See: <https://creativecommons.org/licenses/by-nc/4.0/>

Country/Territory of origin: China

ORCID number: Hao-Yu Wang 0000-0001-5650-7300; Qing-Kun Song 0000-0002-1159-257X; Zhen-Dong Yue 0000-0001-5403-8336; Lei Wang 0000-0003-4080-1630; Zhen-Hua Fan 0000-0001-5417-1997; Yi-Fan Wu 0000-0003-2709-2729; Cheng-Bin Dong 0000-0003-1643-1460; Yu Zhang 0000-0001-9895-175X; Ming-Ming Meng 0000-0003-3560-1052; Ke Zhang 0000-0001-9803-138X; Li Jiang 0000-0001-6632-9229; Hui-Guo Ding 0000-0002-8716-4926; Yue-Ning Zhang 0000-0003-2205-3413; Yong-Ping Yang 0000-0002-8307-1095; Fu-Quan Liu 0000-0003-1972-7712.

Corresponding Author's Membership in Professional Societies: Hepatology Professional Committee of Chinese Research Hospital Association; Portal Hypertension Expert Committee; Interventional Expert Committee of the Department of Oncology, Capital Medical University; Beijing Interventional Medicine Branch of Chinese Medical Association; Beijing Medical Association; Chinese Society of Clinical Oncology (CSCO) Interventional Radiology Expert Committee; Interventional Physician Branch of Chinese Medical Doctor Association.

S-Editor: Fan JR

L-Editor: Wang TQ

P-Editor: Fan JR

REFERENCES

- 1 **Strauss E**, Valla D. Non-cirrhotic portal hypertension--concept, diagnosis and clinical management. *Clin Res Hepatol Gastroenterol* 2014; **38**: 564-569 [PMID: 24581591 DOI: 10.1016/j.clinre.2013.12.012]
- 2 **de Franchis R**; Baveno VI Faculty. Expanding consensus in portal hypertension: Report of the Baveno VI Consensus Workshop: Stratifying risk and individualizing care for portal hypertension. *J Hepatol* 2015; **63**: 743-752 [PMID: 26047908 DOI: 10.1016/j.jhep.2015.05.022]
- 3 **Chinese Portal Hypertension Diagnosis and Monitoring Study Group (CHESS)**; Minimally Invasive Intervention Collaborative Group, Chinese Society of Gastroenterology; Emergency Intervention Committee, Chinese College of Interventionalists; Hepatobiliary Diseases Collaborative Group, Chinese Society of Gastroenterology; Spleen and Portal Hypertension Group, Chinese Society of Surgery; Fatty Liver and Alcoholic Liver Disease Group, Chinese Society of Hepatology; Chinese Research Hospital Association for the Study of the Liver; Hepatobiliary and Pancreatic Diseases Prevention and Control Committee, Chinese Preventive Medicine Association; Chinese Society of Digital Medicine; Chinese Society of Clinical Epidemiology and Evidence Based Medicine. . [Consensus on clinical application of hepatic venous pressure gradient in China (2018)]. *Zhonghua Gan Zang Bing Za Zhi* 2018; **26**: 801-812 [PMID: 30616313 DOI: 10.3760/cma.j.issn.1007-3418.2018.11.001]
- 4 **Groszmann RJ**, Wongcharatrawee S. The hepatic venous pressure gradient: anything worth doing should be done right. *Hepatology* 2004; **39**: 280-282 [PMID: 14767976 DOI: 10.1002/hep.20062]
- 5 **Parikh S**. Hepatic venous pressure gradient: worth another look? *Dig Dis Sci* 2009; **54**: 1178-1183 [PMID: 18975087 DOI: 10.1007/s10620-008-0491-8]
- 6 **Gunarathe LS**, Rajapaksha H, Shackel N, Angus PW, Herath CB. Cirrhotic portal hypertension: From pathophysiology to novel therapeutics. *World J Gastroenterol* 2020; **26**: 6111-6140 [PMID: 33177789 DOI: 10.3748/wjg.v26.i40.6111]
- 7 **Zhang M**, Zhuge YZ, Zou XP, Zhang F, Peng CY, He QB, Li ZL. Correlation between wedge hepatic vein pressure and portal vein pressure in 22 patients with liver cirrhosis. *Zhonghua Xiaohua Zazhi* 2016; **36**: 554-558 [DOI: 10.1016/j.dld.2005.02.009]
- 8 **Merkel C**, Montagnese S. Hepatic venous pressure gradient measurement in clinical hepatology. *Dig Liver Dis* 2011; **43**: 762-767 [PMID: 21549649 DOI: 10.1016/j.dld.2011.03.002]
- 9 **Bosch J**, Garcia-Pagán JC, Berzigotti A, Abraldes JG. Measurement of portal pressure and its role in the management of chronic liver disease. *Semin Liver Dis* 2006; **26**: 348-362 [PMID: 17051449 DOI: 10.1055/s-2006-951603]
- 10 **Ripoll C**, Groszmann R, Garcia-Tsao G, Grace N, Burroughs A, Planas R, Escorsell A, Garcia-Pagan JC, Makuch R, Patch D, Matloff DS, Bosch J; Portal Hypertension Collaborative Group. Hepatic venous pressure gradient predicts clinical decompensation in patients with compensated cirrhosis. *Gastroenterology* 2007; **133**: 481-488 [PMID: 17681169 DOI: 10.1053/j.gastro.2007.05.024]
- 11 **Suk KT**, Kim CH, Park SH, Sung HT, Choi JY, Han KH, Hong SH, Kim DY, Yoon JH, Kim YS, Baik GH, Kim JB, Kim DJ. Comparison of hepatic venous pressure gradient and two models of end-stage liver disease for predicting the survival in patients with decompensated liver cirrhosis. *J Clin Gastroenterol* 2012; **46**: 880-886 [PMID: 22810110 DOI: 10.1097/MCG.0b013e31825f2622]
- 12 **Rincón D**, Lo Iacono O, Tejedor M, Hernando A, Ripoll C, Catalina MV, Salcedo M, Matilla A, Senosiain M, Clemente G, Molinero LM, Albillos A, Bañares R. Prognostic value of hepatic venous pressure gradient in patients with compensated chronic hepatitis C-related cirrhosis. *Scand J Gastroenterol* 2013; **48**: 487-495 [PMID: 22871085 DOI: 10.3109/00365521.2012.711848]
- 13 **Ripoll C**, Groszmann RJ, Garcia-Tsao G, Bosch J, Grace N, Burroughs A, Planas R, Escorsell A, Garcia-Pagan JC,

- Makuch R, Patch D, Matloff DS; Portal Hypertension Collaborative Group. Hepatic venous pressure gradient predicts development of hepatocellular carcinoma independently of severity of cirrhosis. *J Hepatol* 2009; **50**: 923-928 [PMID: 19303163 DOI: 10.1016/j.jhep.2009.01.014]
- 14 **Figueras J.** Hepatic venous pressure gradient in the assessment of portal hypertension before liver resection in patients with cirrhosis (*Br J Surg* 2012; **99**: 855-863). *Br J Surg* 2012; **99**: 863 [PMID: 22539122 DOI: 10.1002/bjs.8754]
 - 15 **Hidaka M,** Takatsuki M, Soyama A, Tanaka T, Muraoka I, Hara T, Kuroki T, Kanematsu T, Eguchi S. Intraoperative portal venous pressure and long-term outcome after curative resection for hepatocellular carcinoma. *Br J Surg* 2012; **99**: 1284-1289 [PMID: 22864890 DOI: 10.1002/bjs.8861]
 - 16 **Perelló A,** Escorsell A, Bru C, Gilabert R, Moitinho E, García-Pagán JC, Bosch J. Wedged hepatic venous pressure adequately reflects portal pressure in hepatitis C virus-related cirrhosis. *Hepatology* 1999; **30**: 1393-1397 [PMID: 10573517 DOI: 10.1002/hep.510300628]
 - 17 **Deplano A,** Migaleddu V, Pischedda A, Garrucciu G, Gregu G, Multinu C, Piredda M, Tocco A, Urigo F, Cossu PA, Solinas A. Portohepatic gradient and portal hemodynamics in patients with cirrhosis due to hepatitis C virus infection. *Dig Dis Sci* 1999; **44**: 155-162 [PMID: 9952237 DOI: 10.1023/a:1026622721389]
 - 18 **Pomier-Layrargues G,** Kusielewicz D, Willems B, Villeneuve JP, Marleau D, Côté J, Huet PM. Presinusoidal portal hypertension in non-alcoholic cirrhosis. *Hepatology* 1985; **5**: 415-418 [PMID: 3997071 DOI: 10.1002/hep.1840050312]
 - 19 **Osada Y,** Kanazawa H, Narahara Y, Mamiya Y, Nakatsuka K, Sakamoto C. Wedged hepatic venous pressure does not reflect portal pressure in patients with cirrhosis and hepatic veno-venous communications. *Dig Dis Sci* 2008; **53**: 7-13 [PMID: 18058232 DOI: 10.1007/s10620-007-0039-3]
 - 20 **Zhang W,** Peng C, Zhang S, Huang S, Shen S, Xu G, Zhang F, Xiao J, Zhang M, Zhuge Y, Wang L, Zou X, Lv Y. EUS-guided portal pressure gradient measurement in patients with acute or subacute portal hypertension. *Gastrointest Endosc* 2021; **93**: 565-572 [PMID: 32615178 DOI: 10.1016/j.gie.2020.06.065]
 - 21 **Valla D,** Bercoff E, Menu Y, Bataille C, Lebrech D. Discrepancy between wedged hepatic venous pressure and portal venous pressure after acute propranolol administration in patients with alcoholic cirrhosis. *Gastroenterology* 1984; **86**: 1400-1403 [PMID: 6714569 DOI: 10.1016/s0016-5085(84)80150-x]
 - 22 **Reverter E,** Blasi A, Abalde JG, Martínez-Palli G, Seijo S, Turon F, Berzigotti A, Balust J, Bosch J, García-Pagán JC. Impact of deep sedation on the accuracy of hepatic and portal venous pressure measurements in patients with cirrhosis. *Liver Int* 2014; **34**: 16-25 [PMID: 23763484 DOI: 10.1111/liv.12229]



Published by **Baishideng Publishing Group Inc**
7041 Koll Center Parkway, Suite 160, Pleasanton, CA 94566, USA

Telephone: +1-925-3991568

E-mail: bpgoffice@wjgnet.com

Help Desk: <https://www.f6publishing.com/helpdesk>

<https://www.wjgnet.com>

