

# World Journal of *Clinical Cases*

*World J Clin Cases* 2022 May 16; 10(14): 4327-4712



**OPINION REVIEW**

- 4327 Emerging role of biosimilars in the clinical care of inflammatory bowel disease patients  
*Najeeb H, Yasmin F, Surani S*

**MINIREVIEWS**

- 4334 Practical insights into chronic management of hepatic Wilson's disease  
*Lynch EN, Campani C, Innocenti T, Dragoni G, Forte P, Galli A*
- 4348 Adipose-derived stem cells in the treatment of hepatobiliary diseases and sepsis  
*Satilmis B, Cicek GS, Cicek E, Akbulut S, Sahin TT, Yilmaz S*

**ORIGINAL ARTICLE****Clinical and Translational Research**

- 4357 Learning curve for a surgeon in robotic pancreaticoduodenectomy through a "G"-shaped approach: A cumulative sum analysis  
*Wei ZG, Liang CJ, Du Y, Zhang YP, Liu Y*
- 4368 Clinical and prognostic significance of expression of phosphoglycerate mutase family member 5 and Parkin in advanced colorectal cancer  
*Wu C, Feng ML, Jiao TW, Sun MJ*

**Case Control Study**

- 4380 Significance of preoperative peripheral blood neutrophil-lymphocyte ratio in predicting postoperative survival in patients with multiple myeloma bone disease  
*Xu ZY, Yao XC, Shi XJ, Du XR*

**Retrospective Study**

- 4395 Association between depression and malnutrition in pulmonary tuberculosis patients: A cross-sectional study  
*Fang XE, Chen DP, Tang LL, Mao YJ*
- 4404 Pancreatic cancer incidence and mortality patterns in 2006-2015 and prediction of the epidemiological trend to 2025 in China  
*Yin MY, Xi LT, Liu L, Zhu JZ, Qian LJ, Xu CF*
- 4414 Evaluation of short- and medium-term efficacy and complications of ultrasound-guided ablation for small liver cancer  
*Zhong H, Hu R, Jiang YS*

- 4425** Hematopoiesis reconstitution and anti-tumor effectiveness of Pai-Neng-Da capsule in acute leukemia patients with haploidentical hematopoietic stem cell transplantation

*Yuan JJ, Lu Y, Cao JJ, Pei RZ, Gao RL*

- 4436** Oral and maxillofacial pain as the first sign of metastasis of an occult primary tumour: A fifteen-year retrospective study

*Shan S, Liu S, Yang ZY, Wang TM, Lin ZT, Feng YL, Pakezhati S, Huang XF, Zhang L, Sun GW*

- 4446** Reduced serum high-density lipoprotein cholesterol levels and aberrantly expressed cholesterol metabolism genes in colorectal cancer

*Tao JH, Wang XT, Yuan W, Chen JN, Wang ZJ, Ma YB, Zhao FQ, Zhang LY, Ma J, Liu Q*

### Observational Study

- 4460** Correlation of pressure gradient in three hepatic veins with portal pressure gradient

*Wang HY, Song QK, Yue ZD, Wang L, Fan ZH, Wu YF, Dong CB, Zhang Y, Meng MM, Zhang K, Jiang L, Ding HG, Zhang YN, Yang YP, Liu FQ*

- 4470** Multi-slice spiral computed tomography in diagnosing unstable pelvic fractures in elderly and effect of less invasive stabilization

*Huang JG, Zhang ZY, Li L, Liu GB, Li X*

### SYSTEMATIC REVIEWS

- 4480** Distribution and changes in hepatitis C virus genotype in China from 2010 to 2020

*Yang J, Liu HX, Su YY, Liang ZS, Rao HY*

### CASE REPORT

- 4494** Bow hunter's syndrome successfully treated with a posterior surgical decompression approach: A case report and review of literature

*Orlandi N, Cavallieri F, Grisendi I, Romano A, Ghadirpour R, Napoli M, Moratti C, Zanichelli M, Pascarella R, Valzania F, Zedde M*

- 4502** Histological remission of eosinophilic esophagitis under asthma therapy with IL-5 receptor monoclonal antibody: A case report

*Huguenot M, Bruhm AC, Essig M*

- 4509** Cutaneous mucosa-associated lymphoid tissue lymphoma complicating Sjögren's syndrome: A case report and review of literature

*Liu Y, Zhu J, Huang YH, Zhang QR, Zhao LL, Yu RH*

- 4519** Plexiform neurofibroma of the cauda equina with follow-up of 10 years: A case report

*Chomanskis Z, Juskys R, Cepkus S, Dulko J, Hendrixson V, Ruksenas O, Rocka S*

- 4528** Mixed porokeratosis with a novel mevalonate kinase gene mutation: A case report

*Xu HJ, Wen GD*

- 4535** Isolated pancreatic injury caused by abdominal massage: A case report

*Sun BL, Zhang LL, Yu WM, Tuo HF*

- 4541** Bronchiolar adenoma with unusual presentation: Two case reports  
*Du Y, Wang ZY, Zheng Z, Li YX, Wang XY, Du R*
- 4550** Periodontal-orthodontic interdisciplinary management of a “periodontally hopeless” maxillary central incisor with severe mobility: A case report and review of literature  
*Jiang K, Jiang LS, Li HX, Lei L*
- 4563** Anesthesia management for cesarean section in a pregnant woman with odontogenic infection: A case report  
*Ren YL, Ma YS*
- 4569** Convulsive-like movements as the first symptom of basilar artery occlusive brainstem infarction: A case report  
*Wang TL, Wu G, Liu SZ*
- 4574** Globe luxation may prevent myopia in a child: A case report  
*Li Q, Xu YX*
- 4580** Computer tomography-guided negative pressure drainage treatment of intrathoracic esophagojejunal anastomotic leakage: A case report  
*Jiang ZY, Tao GQ, Zhu YF*
- 4586** Primary or metastatic lung cancer? Sebaceous carcinoma of the thigh: A case report  
*Wei XL, Liu Q, Zeng QL, Zhou H*
- 4594** Perianesthesia emergency repair of a cut endotracheal tube’s inflatable tube: A case report  
*Wang TT, Wang J, Sun TT, Hou YT, Lu Y, Chen SG*
- 4601** Diagnosis of cytomegalovirus encephalitis using metagenomic next-generation sequencing of blood and cerebrospinal fluid: A case report  
*Xu CQ, Chen XL, Zhang DS, Wang JW, Yuan H, Chen WF, Xia H, Zhang ZY, Peng FH*
- 4608** Primary sigmoid squamous cell carcinoma with liver metastasis: A case report  
*Li XY, Teng G, Zhao X, Zhu CM*
- 4617** Acute recurrent cerebral infarction caused by moyamoya disease complicated with adenomyosis: A case report  
*Zhang S, Zhao LM, Xue BQ, Liang H, Guo GC, Liu Y, Wu RY, Li CY*
- 4625** Serum-negative Sjogren's syndrome with minimal lesion nephropathy as the initial presentation: A case report  
*Li CY, Li YM, Tian M*
- 4632** Successful individualized endodontic treatment of severely curved root canals in a mandibular second molar: A case report  
*Xu LJ, Zhang JY, Huang ZH, Wang XZ*

- 4640** Successful treatment in one myelodysplastic syndrome patient with primary thrombocytopenia and secondary deep vein thrombosis: A case report  
*Liu WB, Ma JX, Tong HX*
- 4648** Diagnosis of an extremely rare case of malignant adenomyoepithelioma in pleomorphic adenoma: A case report  
*Zhang WT, Wang YB, Ang Y, Wang HZ, Li YX*
- 4654** Management about intravesical histological transformation of prostatic mucinous carcinoma after radical prostatectomy: A case report  
*Bai SJ, Ma L, Luo M, Xu H, Yang L*
- 4661** Hepatopulmonary metastases from papillary thyroid microcarcinoma: A case report  
*Yang CY, Chen XW, Tang D, Yang WJ, Mi XX, Shi JP, Du WD*
- 4669** PD-1 inhibitor in combination with fruquintinib therapy for initial unresectable colorectal cancer: A case report  
*Zhang HQ, Huang CZ, Wu JY, Wang ZL, Shao Y, Fu Z*
- 4676** Cutaneous metastasis from esophageal squamous cell carcinoma: A case report  
*Zhang RY, Zhu SJ, Xue P, He SQ*
- 4684** Rare pattern of Maisonneuve fracture: A case report  
*Zhao B, Li N, Cao HB, Wang GX, He JQ*
- 4691** Suprasellar cistern tuberculoma presenting as unilateral ocular motility disorder and ptosis: A case report  
*Zhao BB, Tian C, Fu LJ, Zhang XB*
- 4698** Development of plasma cell dyscrasias in a patient with chronic myeloid leukemia: A case report  
*Zhang N, Jiang TD, Yi SH*
- 4704** Ovarian growing teratoma syndrome with multiple metastases in the abdominal cavity and liver: A case report  
*Hu X, Jia Z, Zhou LX, Kakongoma N*

**LETTER TO THE EDITOR**

- 4709** Perfectionism and mental health problems: Limitations and directions for future research  
*Nazari N*

**ABOUT COVER**

Editorial Board Member of *World Journal of Clinical Cases*, Jamir Pitton Rissardo, MD, Academic Research, Adjunct Associate Professor, Research Associate, Department of Medicine, Federal University of Santa Maria, Santa Maria 97105110, Brazil. jamirrissardo@gmail.com

**AIMS AND SCOPE**

The primary aim of *World Journal of Clinical Cases* (WJCC, *World J Clin Cases*) is to provide scholars and readers from various fields of clinical medicine with a platform to publish high-quality clinical research articles and communicate their research findings online.

WJCC mainly publishes articles reporting research results and findings obtained in the field of clinical medicine and covering a wide range of topics, including case control studies, retrospective cohort studies, retrospective studies, clinical trials studies, observational studies, prospective studies, randomized controlled trials, randomized clinical trials, systematic reviews, meta-analysis, and case reports.

**INDEXING/ABSTRACTING**

The WJCC is now indexed in Science Citation Index Expanded (also known as SciSearch®), Journal Citation Reports/Science Edition, Scopus, PubMed, and PubMed Central. The 2021 Edition of Journal Citation Reports® cites the 2020 impact factor (IF) for WJCC as 1.337; IF without journal self cites: 1.301; 5-year IF: 1.742; Journal Citation Indicator: 0.33; Ranking: 119 among 169 journals in medicine, general and internal; and Quartile category: Q3. The WJCC's CiteScore for 2020 is 0.8 and Scopus CiteScore rank 2020: General Medicine is 493/793.

**RESPONSIBLE EDITORS FOR THIS ISSUE**

Production Editor: Hua-Ge Yin, Production Department Director: Xu Guo, Editorial Office Director: Jin-Lei Wang.

**NAME OF JOURNAL**

*World Journal of Clinical Cases*

**ISSN**

ISSN 2307-8960 (online)

**LAUNCH DATE**

April 16, 2013

**FREQUENCY**

Thrice Monthly

**EDITORS-IN-CHIEF**

Bao-Gan Peng, Jerzy Tadeusz Chudek, George Kontogeorgos, Maurizio Serati, Ja Hyeon Ku

**EDITORIAL BOARD MEMBERS**

<https://www.wjgnet.com/2307-8960/editorialboard.htm>

**PUBLICATION DATE**

May 16, 2022

**COPYRIGHT**

© 2022 Baishideng Publishing Group Inc

**INSTRUCTIONS TO AUTHORS**

<https://www.wjgnet.com/bpg/gerinfo/204>

**GUIDELINES FOR ETHICS DOCUMENTS**

<https://www.wjgnet.com/bpg/GerInfo/287>

**GUIDELINES FOR NON-NATIVE SPEAKERS OF ENGLISH**

<https://www.wjgnet.com/bpg/gerinfo/240>

**PUBLICATION ETHICS**

<https://www.wjgnet.com/bpg/GerInfo/288>

**PUBLICATION MISCONDUCT**

<https://www.wjgnet.com/bpg/gerinfo/208>

**ARTICLE PROCESSING CHARGE**

<https://www.wjgnet.com/bpg/gerinfo/242>

**STEPS FOR SUBMITTING MANUSCRIPTS**

<https://www.wjgnet.com/bpg/GerInfo/239>

**ONLINE SUBMISSION**

<https://www.f6publishing.com>



## Isolated pancreatic injury caused by abdominal massage: A case report

Bing-Lun Sun, Liang-Liang Zhang, Wei-Ming Yu, Hong-Fang Tuo

**Specialty type:** Medicine, research and experimental

**Provenance and peer review:** Unsolicited article; Externally peer reviewed.

**Peer-review model:** Single blind

**Peer-review report's scientific quality classification**

Grade A (Excellent): 0  
Grade B (Very good): B  
Grade C (Good): C  
Grade D (Fair): 0  
Grade E (Poor): 0

**P-Reviewer:** Ghannam WM, Egypt; Tenreiro N, Portugal

**Received:** August 22, 2021

**Peer-review started:** August 22, 2021

**First decision:** October 22, 2021

**Revised:** November 3, 2021

**Accepted:** March 25, 2022

**Article in press:** March 25, 2022

**Published online:** May 16, 2022



**Bing-Lun Sun, Liang-Liang Zhang, Wei-Ming Yu, Hong-Fang Tuo**, Department of Hepatobiliary Surgery, Hebei General Hospital, Shijiazhuang 050000, Hebei Province, China

**Corresponding author:** Hong-Fang Tuo, PhD, Chief Doctor, Professor, Department of Hepatobiliary Surgery, Hebei General Hospital, No. 348, Heping West Road, Xinhua, Shijiazhuang 050000, Hebei Province, China. [touhf@aliyun.com](mailto:touhf@aliyun.com)

### Abstract

#### BACKGROUND

Regular abdominal massage can be used to treat digestive symptoms such as bloating and constipation and is reported to reduce abdominal discomfort, improve digestive function, and increase the quality of life, without serious adverse effects. Isolated pancreatic injury is rare, and most often occurs during severe trauma such as steering wheel impact injury. To our knowledge, pancreatic injury caused by massage has not yet been reported in the literature.

#### CASE SUMMARY

A 57-year-old woman was referred to our hospital for acute abdominal pain and transient syncope. On examination, she had low hemoglobin concentration and a high white blood cell count and neutrophil percentage. Plain computed tomography of the abdomen revealed a substantial hemorrhage in the abdominal cavity. A large amount of exudate in the pancreatic area was considered a hematoma. Preoperative diagnosis was difficult. Her hemoglobin and blood pressure did not rise even after blood. We suspected progressive bleeding in the abdominal cavity and urgently performed exploratory laparotomy. During the operation, the pancreas was confirmed to be ruptured; hence, spleen-preserving pancreatic body and tail resection were performed. A pancreatic fistula was found on the 15<sup>th</sup> d after the operation, and the patient was discharged with a drainage tube on the 24<sup>th</sup> d after active treatment. Subsequently, it was discovered that the patient had undergone a vigorous abdominal massage the day before the abdominal pain began. To our knowledge, this is the first report of isolated pancreatic injury and massive abdominal hemorrhage caused by abdominal massage.

#### CONCLUSION

Our findings indicate that any action that increases intra-abdominal pressure may cause internal organ damage. We also review similar cases reported in the literature.

**Key Words:** Blunt abdominal trauma; Abdominal massage; Pancreas rupture; Hemorrhagic shock; Pancreatectomy; Case report

©The Author(s) 2022. Published by Baishideng Publishing Group Inc. All rights reserved.

**Core Tip:** Abdominal massage is considered a reliable treatment method to relieve abdominal distension and constipation, but when asked by doctors about trauma history, it is sometimes ignored. Pancreas rupture is more common in severe steering wheel impact injuries, but it is rarely associated with abdominal massage. Therefore, we must be alert to the increase in intra-abdominal pressure caused by massage, which may further damage the pancreas or other abdominal organs.

**Citation:** Sun BL, Zhang LL, Yu WM, Tuo HF. Isolated pancreatic injury caused by abdominal massage: A case report. *World J Clin Cases* 2022; 10(14): 4535-4540

**URL:** <https://www.wjgnet.com/2307-8960/full/v10/i14/4535.htm>

**DOI:** <https://dx.doi.org/10.12998/wjcc.v10.i14.4535>

## INTRODUCTION

Because of the deep anatomical location of the pancreas, traumatic pancreatic rupture is relatively rare. The pancreas lies adjacent to the stomach, liver, duodenum, small intestine, colon, and other important organs, as well as large blood vessels in the abdominal cavity; therefore, pancreatic injury is typically associated with damage to other organs and blood vessels, with isolated harm to the pancreas accounting for only 14% of all pancreatic injuries[1]. Isolated pancreatic injury most often occurs during severe upper abdominal trauma. There have been no reports of isolated pancreatic injury caused by abdominal massage. In this report, we describe a very rare case of pancreatic injury following abdominal massage, which caused massive abdominal hemorrhage.

## CASE PRESENTATION

### Chief complaints

A 57-year-old woman had acute abdominal pain for 1 d, which worsened in the last 12 h.

### History of present illness

The patient had developed persistent severe upper abdominal pain 1 d previously, which could be relieved by rest. The upper abdominal pain worsened in the last 12 h, accompanied by nausea, vomiting, and transient syncope, prior to her presentation at the emergency center of a tertiary hospital.

### History of past illness

She had hypertension and denied a history of surgery and/or trauma.

### Personal and family history

The personal and family history of patients are unremarkable.

### Physical examination

When she arrived at the hospital, she was conscious but unwell and her face was pale. Her body temperature was 35.5 °C, blood pressure was 13.2/10.2 kPa, heart rate was 105 beats/min, breathing rate was 26 beats/min, and blood oxygen saturation was 99%. There was no ecchymosis in the abdomen, obvious tenderness in the umbilical area and upper abdomen, and no rebound pain or muscle tension. Abdominal percussion was dull, and no bowel sounds were heard.

### Laboratory examinations

Preoperative blood test showed that white blood cell count was  $11.76 \times 10^9/L$ , neutrophil percentage was 85.8%, hemoglobin was 77.00 g/L, and the D-dimer quantification was 1.54 mg/L.

### Imaging examinations

Abdominal computed tomography (CT) showed no abnormalities in the soft tissue and bone structure of the abdominal wall. There was a large amount of fluid in the abdominal cavity, and some of it had a

slightly higher density. Multiple round-like density shadows with clear borders could be seen in the liver parenchyma, and the larger ones were about 39 mm in diameter; the intrahepatic bile ducts were not dilated. The pancreas was not clearly displayed, large-scale exudation could be seen in and around the pancreas (Figure 1A), the surrounding fat gap was blurred, and multiple clusters of high- and slightly low-density shadows could be seen around the pancreas, the larger of which was about 8.8 cm × 6.4 cm in size (Figures 1B and 1C). The adjacent peritoneum and bilateral prerenal fascia showed thickening. Pelvic CT showed a small amount of effusion in the pelvic cavity, and there was no obvious abnormality in the uterus and appendages. Chest CT showed mild emphysema in both lungs, and no pleural effusion was seen on either side.

## FINAL DIAGNOSIS

The patient was diagnosed with massive abdominal hemorrhage secondary to pancreatic rupture.

## TREATMENT

In the emergency center, we quickly established intravenous access and infused 4U O-type red blood cells, 400 mL plasma, and 4U cryoprecipitated clotting factor. Blood pressure was 12.5/9.7 kPa, heart rate was 106 beats/min, and hemoglobin was retested as 63 g/L after transfusion. To determine the cause of the bleeding, we performed exploratory laparotomy. Surgery revealed extensive old hemorrhage in the abdominal cavity, hematoma in the omental sac, retroperitoneal hematoma, injury to the pancreatic body, and hemorrhage from blood vessels on the back of the pancreatic body. After suturing and hemostasis, exploration showed that approximately three quarters of the transverse diameter of the pancreas was damaged, and there were hematomas behind the pancreas, colon, and mesentery root. As the pancreatic injury was too large to be repaired, a pancreatic body and tail resection was performed. The pancreas was transected from the ruptured area, and the proximal end was sutured to arrest the bleeding. We used a disposable endoscopic wire-cutting stapler with a length of a 2.5-mm nail to remove the vessels near the tail of the pancreas and part of the splenic hilum. The lateral width of the distal pancreas tissue was about 4 cm. As the vital signs of the patient were stable during the operation, we retained the spleen. The wound stopped bleeding and two abdominal drainage tubes were properly placed. The operation was completed uneventfully.

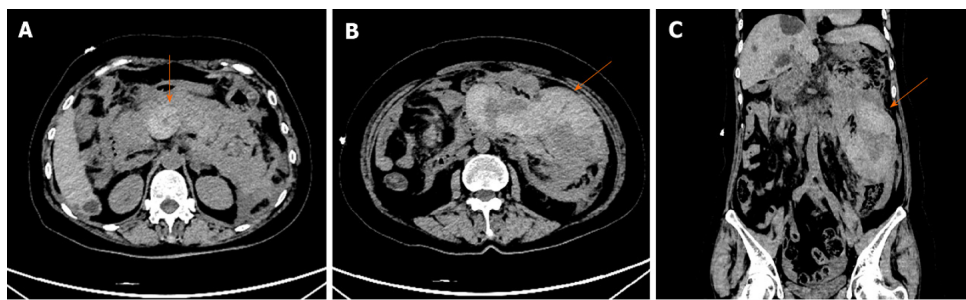
## OUTCOME AND FOLLOW-UP

After the operation, the patient was transferred to the intensive care unit for treatment. After sedatives were discontinued on the first postoperative day, she gradually became conscious and could complete simple commands. However, her hemodynamics remained unstable, volume expansion was required, and norepinephrine administered *via* a syringe pump. She gradually recovered after comprehensive treatment, including somatostatin, ulinastatin, antibiotics, blood transfusion, and nutritional support. The patient developed a pancreatic fistula 15 d after the operation, and the abdominal pain was significantly reduced after continuous negative pressure drainage through the spiral negative pressure drainage tube. The drainage fluid gradually reduced from 100 to 20 mL per 24 h by the 21<sup>st</sup> d after surgery. The abdominal drainage tube placed in the right abdomen was then removed. The patient recovered well after the operation and was discharged on the 24<sup>th</sup> d after surgery. The patient attended our clinic for reexamination one month after the operation. The abdominal drainage tube on the left abdomen had no drainage in the past 4 d, and the blood-related examinations and amylase were normal. We considered the patient's pancreatic fistula to be cured, and the abdominal drainage tube was hence pulled out.

## DISCUSSION

### Preoperative analysis

When the patient was admitted to the hospital, she denied any history of trauma or surgery, and no evidence of trauma was detected on physical examination. CT could objectively reveal abdominal cavity damage, and the time required for examination is relatively short. Hence, this technique has an important role in routine diagnosis and treatment of acute abdominal pain[2]. Therefore, we chose to conduct a CT examination, which clearly showed the intra-abdominal hemorrhage. There was a large-scale exudation in the pancreatic area, accompanied by a variety of high-density and low-density shadows, considering the possibility of hematoma. There were also multiple cystic lesions in the liver.



DOI: 10.12998/wjcc.v10.i14.4535 Copyright ©The Author(s) 2022.

**Figure 1 Preoperative abdominal radiological findings.** A: Axial plane image of abdominal computed tomography revealed that the common bile duct and pancreas were unclearly displayed, the pancreatic area and surrounding areas were exuded in a large area, and the surrounding fat gap was blurred, with multiple clumps of high and slightly lower mixed density shadows (arrow); B: Axial; C: Coronal computed tomography images of the patient's abdomen showed multiple cystic lesions in the liver parenchyma, with clear boundaries and a diameter of about 3.9 cm for the larger ones. Hemorrhage is visible in the abdominal space, and there are large high, and relatively low mixed density shadows (arrow) under the transverse colon, measuring approximately 12.5 cm in diameter, which is not clearly demarcated from the adjacent intestine.

Because the patient was anemic, we first considered intra-abdominal hemorrhage of unknown etiology or pancreatic disease to exclude abdominal trauma. Sudden severe abdominal pain accompanied by hemorrhagic shock is similar to the symptoms of abdominal aortic aneurysm rupture, and combined with the patient's history of hypertension, this possibility could not be ruled out[3].

### Surgical exploration

Faced with unexplained abdominal bleeding, it is sometimes difficult to make accurate judgments, and emergency laparotomy can be used to determine the cause and save lives. Exploration of the abdominal cavity revealed old bloody fluid, with hematoma in the lesser omental sac, and paraduodenal hematoma beyond the retroperitoneum, all of which suggested pancreatic injury. Intraoperative exploration confirmed that the pancreas was damaged and bleeding. According to the American Association for Traumatic Surgery pancreatic injury grading standard (Table 1), the patient was confirmed to have grade III injury[4]. According to relevant research instructions, grade I and II injuries should be treated conservatively when the hemodynamics are stable and there are no other abdominal cavity injuries that urgently require surgery; whereas, grade III, IV, and V injuries usually require surgical treatment, with distal pancreatectomy being the first choice for grade III pancreatic injury[5]. As far as possible, distal pancreatectomy aims to ligate the pancreatic duct alone. Stapler suture alone after distal pancreatectomy is a fast and safe suture method, which is not inferior to other suture techniques, and does not increase the possibility of pancreatic fistula or other abdominal complications[6]. For patients with stable hemodynamics, the spleen should be preserved, which can effectively reduce the risk of dangerous infection complications and thromboembolism after surgery[7,8]. Although the patient's condition was complex and critical, and the slow emergence of the clinical signs of pancreatic injury delayed diagnosis and treatment, fortunately, timely surgical treatment controlled the dangerous abdominal bleeding and saved her life.

### Finding the cause

In conversation following the operation, the patient told us that she had undergone abdominal massage the day before the abdominal pain occurred. At the time, she felt the massage had been very powerful and painful. On detailed questioning, she had no other injuries. Because the pancreas is a retroperitoneal organ and is protected by the abdominal wall, stomach, and colon, injury is not likely. Pancreatic injury occurs in only 0.2% of patients who endure blunt abdominal injury[9]. Closed pancreatic injuries are most often traffic injuries. The soft pancreas can be squeezed by external forces, such as a steering wheel or bicycle handlebars, and collides with the hard spine behind, causing local pancreatic injury or even rupture. It is not difficult to imagine that any high-intensity external force acting on the abdomen may cause varying degrees of pancreatic damage. Although there is no direct evidence, we consider that abdominal massage caused the pancreatic injury in our patient, based on her medical history. Recent studies have shown[10,11] that abdominal massage can reduce gastric residual volume and the incidence of abdominal distension by mechanically stimulating intestinal movement, as well as increasing the frequency of defecation, with no obvious adverse effects detected. In a previous report, an elderly man was admitted to the hospital with sudden abdominal pain; he had received a vigorous massage the day before its onset and was found to have isolated mesenteric injury during surgery, which had caused severe abdominal hemorrhage[12]. Similar to the pancreas, isolated mesenteric injury after blunt abdominal trauma is also very rare, as external force needs to be directly transmitted to the mesentery to cause it to tear. The medical history of our patient was very similar to this previous report, providing strong evidence that vigorous abdominal massage can be a cause for pancreatic injury.

**Table 1 Pancreatic Organ Injury Scale: American Association for the Surgery of Trauma**

Grade	Injury description
I	Minor contusion or superficial laceration without duct injury
II	Minor contusion or laceration without duct injury or tissue loss
III	Distal transection or parenchymal injury with duct injury
IV	Proximal (right or superior mesenteric artery) transection or parenchymal injury

Therefore, deep and powerful abdominal massage should be avoided.

## CONCLUSION

To our knowledge, this is the first case report of a pancreatic rupture caused by abdominal massage. Appropriate abdominal massage is beneficial to relieve abdominal distension and constipation; however, vigorous abdominal massage should be avoided, as it can cause life-threatening damage to the internal organs and tissues of the abdomen.

## FOOTNOTES

**Author contributions:** Sun SL collected patient information, reviewed the literature, and drafted the manuscript; Tuo HF performed the operation, and reviewed and revised the manuscript before submission; Zhang LL and Yu WM revised documents and manuscripts; and all authors contributed to the article and approved the submitted version.

**Informed consent statement:** Written informed consent was obtained from the patient for publication of this case report and accompanying images and clinical data.

**Conflict-of-interest statement:** The authors declare that the research was conducted in the absence of any commercial or financial relationships that could be construed as a potential conflict of interest.

**CARE Checklist (2016) statement:** The authors have read the CARE Checklist (2016), and the manuscript was prepared and revised according to the CARE Checklist (2016).

**Open-Access:** This article is an open-access article that was selected by an in-house editor and fully peer-reviewed by external reviewers. It is distributed in accordance with the Creative Commons Attribution NonCommercial (CC BY-NC 4.0) license, which permits others to distribute, remix, adapt, build upon this work non-commercially, and license their derivative works on different terms, provided the original work is properly cited and the use is non-commercial. See: <http://creativecommons.org/licenses/by-nc/4.0/>

**Country/Territory of origin:** China

**ORCID number:** Bing-Lun Sun 0000-0002-8859-4135; Liang-Liang Zhang 0000-0002-8729-5483; Wei-Ming Yu 0000-0001-7738-7280; Hong-Fang Tuo 0000-0001-9226-2830.

**S-Editor:** Wang JJ

**L-Editor:** A

**P-Editor:** Wang JJ

## REFERENCES

- 1 Biffl WL, Moore EE, Croce M, Davis JW, Coimbra R, Karmy-Jones R, McIntyre RC Jr, Moore FA, Sperry J, Malhotra A, Feliciano D. Western Trauma Association critical decisions in trauma: management of pancreatic injuries. *J Trauma Acute Care Surg* 2013; **75**: 941-946 [PMID: 24256664 DOI: 10.1097/TA.0b013e3182a96572]
- 2 Heiken JP, Katz DS, Menu Y. Emergency Radiology of the Abdomen and Pelvis: Imaging of the Non-traumatic and Traumatic Acute Abdomen. 2018 Mar 21. In: Diseases of the Abdomen and Pelvis 2018-2021: Diagnostic Imaging - IDKD Book [Internet]. Cham (CH): Springer; 2018– [PMID: 31314362]
- 3 Barrionuevo P, Malas MB, Nejim B, Haddad A, Morrow A, Ponce O, Hasan B, Seisa M, Chaer R, Murad MH. A systematic review and meta-analysis of the management of visceral artery aneurysms. *J Vasc Surg* 2020; **72**: 40S-45S [PMID: 32553135 DOI: 10.1016/j.jvs.2020.05.018]
- 4 Moore EE, Cogbill TH, Malangoni MA, Jurkovich GJ, Champion HR, Gennarelli TA, McAninch JW, Pachter HL,

- Shackford SR, Trafton PG. Organ injury scaling, II: Pancreas, duodenum, small bowel, colon, and rectum. *J Trauma* 1990; **30**: 1427-1429 [PMID: [2231822](#)]
- 5 **Ho VP**, Patel NJ, Bokhari F, Madbak FG, Hambley JE, Yon JR, Robinson BR, Nagy K, Armen SB, Kingsley S, Gupta S, Starr FL, Moore HR 3rd, Oliphant UJ, Haut ER, Como JJ. Management of adult pancreatic injuries: A practice management guideline from the Eastern Association for the Surgery of Trauma. *J Trauma Acute Care Surg* 2017; **82**: 185-199 [PMID: [27787438](#) DOI: [10.1097/TA.0000000000001300](#)]
- 6 **Peck GL**, Blitzer DN, Bulautian CS, Huntress LA, Truche P, Feliciano DV, Dente CJ. Outcomes after Distal Pancreatectomy for Trauma in the Modern Era. *Am Surg* 2016; **82**: 526-532 [PMID: [27305885](#)]
- 7 **Nikfarjam M**, Rosen M, Ponsky T. Early management of traumatic pancreatic transection by spleen-preserving laparoscopic distal pancreatectomy. *J Pediatr Surg* 2009; **44**: 455-458 [PMID: [19231557](#) DOI: [10.1016/j.jpedsurg.2008.09.026](#)]
- 8 **Pommerening MJ**, Rahbar E, Minei K, Holcomb JB, Wade CE, Schreiber MA, Cohen MJ, Underwood SJ, Nelson M, Cotton BA. Splenectomy is associated with hypercoagulable thrombelastography values and increased risk of thromboembolism. *Surgery* 2015; **158**: 618-626 [PMID: [26209572](#) DOI: [10.1016/j.surg.2015.06.014](#)]
- 9 **Iacono C**, Zicari M, Conci S, Valdegamberi A, De Angelis M, Pedrazzani C, Ruzzenente A, Guglielmi A. Management of pancreatic trauma: A pancreatic surgeon's point of view. *Pancreatol* 2016; **16**: 302-308 [PMID: [26764528](#) DOI: [10.1016/j.pan.2015.12.004](#)]
- 10 **Dehghan M**, Malakoutikhah A, Ghaedi Heidari F, Zakeri MA. The Effect of Abdominal Massage on Gastrointestinal Functions: a Systematic Review. *Complement Ther Med* 2020; **54**: 102553 [PMID: [33183670](#) DOI: [10.1016/j.ctim.2020.102553](#)]
- 11 **Çetinkaya O**, Ovayolu Ö, Ovayolu N. The Effect of Abdominal Massage on Enteral Complications in Geriatric Patients. *SAGE Open Nurs* 2020; **6**: 2377960820963772 [PMID: [35155761](#) DOI: [10.1177/2377960820963772](#)]
- 12 **Mori S**, Ai T, Otomo Y. Laceration of the transverse mesocolon in an old man with a habit of abdominal massage for constipation: a case report. *Surg Case Rep* 2020; **6**: 1 [PMID: [31898753](#) DOI: [10.1186/s40792-019-0767-6](#)]



Published by **Baishideng Publishing Group Inc**  
7041 Koll Center Parkway, Suite 160, Pleasanton, CA 94566, USA

**Telephone:** +1-925-3991568

**E-mail:** [bpgoffice@wjgnet.com](mailto:bpgoffice@wjgnet.com)

**Help Desk:** <https://www.f6publishing.com/helpdesk>

<https://www.wjgnet.com>

