

World Journal of *Clinical Cases*

World J Clin Cases 2022 May 16; 10(14): 4327-4712



Contents

Thrice Monthly Volume 10 Number 14 May 16, 2022

OPINION REVIEW

- 4327 Emerging role of biosimilars in the clinical care of inflammatory bowel disease patients
Najeeb H, Yasmin F, Surani S

MINIREVIEWS

- 4334 Practical insights into chronic management of hepatic Wilson's disease
Lynch EN, Campani C, Innocenti T, Dragoni G, Forte P, Galli A
- 4348 Adipose-derived stem cells in the treatment of hepatobiliary diseases and sepsis
Satilmis B, Cicek GS, Cicek E, Akbulut S, Sahin TT, Yilmaz S

ORIGINAL ARTICLE

Clinical and Translational Research

- 4357 Learning curve for a surgeon in robotic pancreaticoduodenectomy through a "G"-shaped approach: A cumulative sum analysis
Wei ZG, Liang CJ, Du Y, Zhang YP, Liu Y
- 4368 Clinical and prognostic significance of expression of phosphoglycerate mutase family member 5 and Parkin in advanced colorectal cancer
Wu C, Feng ML, Jiao TW, Sun MJ

Case Control Study

- 4380 Significance of preoperative peripheral blood neutrophil-lymphocyte ratio in predicting postoperative survival in patients with multiple myeloma bone disease
Xu ZY, Yao XC, Shi XJ, Du XR

Retrospective Study

- 4395 Association between depression and malnutrition in pulmonary tuberculosis patients: A cross-sectional study
Fang XE, Chen DP, Tang LL, Mao YJ
- 4404 Pancreatic cancer incidence and mortality patterns in 2006-2015 and prediction of the epidemiological trend to 2025 in China
Yin MY, Xi LT, Liu L, Zhu JZ, Qian LJ, Xu CF
- 4414 Evaluation of short- and medium-term efficacy and complications of ultrasound-guided ablation for small liver cancer
Zhong H, Hu R, Jiang YS

- 4425** Hematopoiesis reconstitution and anti-tumor effectiveness of Pai-Neng-Da capsule in acute leukemia patients with haploidentical hematopoietic stem cell transplantation

Yuan JJ, Lu Y, Cao JJ, Pei RZ, Gao RL

- 4436** Oral and maxillofacial pain as the first sign of metastasis of an occult primary tumour: A fifteen-year retrospective study

Shan S, Liu S, Yang ZY, Wang TM, Lin ZT, Feng YL, Pakezhati S, Huang XF, Zhang L, Sun GW

- 4446** Reduced serum high-density lipoprotein cholesterol levels and aberrantly expressed cholesterol metabolism genes in colorectal cancer

Tao JH, Wang XT, Yuan W, Chen JN, Wang ZJ, Ma YB, Zhao FQ, Zhang LY, Ma J, Liu Q

Observational Study

- 4460** Correlation of pressure gradient in three hepatic veins with portal pressure gradient

Wang HY, Song QK, Yue ZD, Wang L, Fan ZH, Wu YF, Dong CB, Zhang Y, Meng MM, Zhang K, Jiang L, Ding HG, Zhang YN, Yang YP, Liu FQ

- 4470** Multi-slice spiral computed tomography in diagnosing unstable pelvic fractures in elderly and effect of less invasive stabilization

Huang JG, Zhang ZY, Li L, Liu GB, Li X

SYSTEMATIC REVIEWS

- 4480** Distribution and changes in hepatitis C virus genotype in China from 2010 to 2020

Yang J, Liu HX, Su YY, Liang ZS, Rao HY

CASE REPORT

- 4494** Bow hunter's syndrome successfully treated with a posterior surgical decompression approach: A case report and review of literature

Orlandi N, Cavallieri F, Grisendi I, Romano A, Ghadirpour R, Napoli M, Moratti C, Zanichelli M, Pascarella R, Valzania F, Zedde M

- 4502** Histological remission of eosinophilic esophagitis under asthma therapy with IL-5 receptor monoclonal antibody: A case report

Huguenot M, Bruhm AC, Essig M

- 4509** Cutaneous mucosa-associated lymphoid tissue lymphoma complicating Sjögren's syndrome: A case report and review of literature

Liu Y, Zhu J, Huang YH, Zhang QR, Zhao LL, Yu RH

- 4519** Plexiform neurofibroma of the cauda equina with follow-up of 10 years: A case report

Chomanskis Z, Juskys R, Cepkus S, Dulko J, Hendrixson V, Ruksenas O, Rocka S

- 4528** Mixed porokeratosis with a novel mevalonate kinase gene mutation: A case report

Xu HJ, Wen GD

- 4535** Isolated pancreatic injury caused by abdominal massage: A case report

Sun BL, Zhang LL, Yu WM, Tuo HF

- 4541** Bronchiolar adenoma with unusual presentation: Two case reports
Du Y, Wang ZY, Zheng Z, Li YX, Wang XY, Du R
- 4550** Periodontal-orthodontic interdisciplinary management of a “periodontally hopeless” maxillary central incisor with severe mobility: A case report and review of literature
Jiang K, Jiang LS, Li HX, Lei L
- 4563** Anesthesia management for cesarean section in a pregnant woman with odontogenic infection: A case report
Ren YL, Ma YS
- 4569** Convulsive-like movements as the first symptom of basilar artery occlusive brainstem infarction: A case report
Wang TL, Wu G, Liu SZ
- 4574** Globe luxation may prevent myopia in a child: A case report
Li Q, Xu YX
- 4580** Computer tomography-guided negative pressure drainage treatment of intrathoracic esophagojejunal anastomotic leakage: A case report
Jiang ZY, Tao GQ, Zhu YF
- 4586** Primary or metastatic lung cancer? Sebaceous carcinoma of the thigh: A case report
Wei XL, Liu Q, Zeng QL, Zhou H
- 4594** Perianesthesia emergency repair of a cut endotracheal tube’s inflatable tube: A case report
Wang TT, Wang J, Sun TT, Hou YT, Lu Y, Chen SG
- 4601** Diagnosis of cytomegalovirus encephalitis using metagenomic next-generation sequencing of blood and cerebrospinal fluid: A case report
Xu CQ, Chen XL, Zhang DS, Wang JW, Yuan H, Chen WF, Xia H, Zhang ZY, Peng FH
- 4608** Primary sigmoid squamous cell carcinoma with liver metastasis: A case report
Li XY, Teng G, Zhao X, Zhu CM
- 4617** Acute recurrent cerebral infarction caused by moyamoya disease complicated with adenomyosis: A case report
Zhang S, Zhao LM, Xue BQ, Liang H, Guo GC, Liu Y, Wu RY, Li CY
- 4625** Serum-negative Sjogren's syndrome with minimal lesion nephropathy as the initial presentation: A case report
Li CY, Li YM, Tian M
- 4632** Successful individualized endodontic treatment of severely curved root canals in a mandibular second molar: A case report
Xu LJ, Zhang JY, Huang ZH, Wang XZ

- 4640** Successful treatment in one myelodysplastic syndrome patient with primary thrombocytopenia and secondary deep vein thrombosis: A case report
Liu WB, Ma JX, Tong HX
- 4648** Diagnosis of an extremely rare case of malignant adenomyoepithelioma in pleomorphic adenoma: A case report
Zhang WT, Wang YB, Ang Y, Wang HZ, Li YX
- 4654** Management about intravesical histological transformation of prostatic mucinous carcinoma after radical prostatectomy: A case report
Bai SJ, Ma L, Luo M, Xu H, Yang L
- 4661** Hepatopulmonary metastases from papillary thyroid microcarcinoma: A case report
Yang CY, Chen XW, Tang D, Yang WJ, Mi XX, Shi JP, Du WD
- 4669** PD-1 inhibitor in combination with fruquintinib therapy for initial unresectable colorectal cancer: A case report
Zhang HQ, Huang CZ, Wu JY, Wang ZL, Shao Y, Fu Z
- 4676** Cutaneous metastasis from esophageal squamous cell carcinoma: A case report
Zhang RY, Zhu SJ, Xue P, He SQ
- 4684** Rare pattern of Maisonneuve fracture: A case report
Zhao B, Li N, Cao HB, Wang GX, He JQ
- 4691** Suprasellar cistern tuberculoma presenting as unilateral ocular motility disorder and ptosis: A case report
Zhao BB, Tian C, Fu LJ, Zhang XB
- 4698** Development of plasma cell dyscrasias in a patient with chronic myeloid leukemia: A case report
Zhang N, Jiang TD, Yi SH
- 4704** Ovarian growing teratoma syndrome with multiple metastases in the abdominal cavity and liver: A case report
Hu X, Jia Z, Zhou LX, Kakongoma N

LETTER TO THE EDITOR

- 4709** Perfectionism and mental health problems: Limitations and directions for future research
Nazari N

ABOUT COVER

Editorial Board Member of *World Journal of Clinical Cases*, Jamir Pitton Rissardo, MD, Academic Research, Adjunct Associate Professor, Research Associate, Department of Medicine, Federal University of Santa Maria, Santa Maria 97105110, Brazil. jamirrissardo@gmail.com

AIMS AND SCOPE

The primary aim of *World Journal of Clinical Cases* (WJCC, *World J Clin Cases*) is to provide scholars and readers from various fields of clinical medicine with a platform to publish high-quality clinical research articles and communicate their research findings online.

WJCC mainly publishes articles reporting research results and findings obtained in the field of clinical medicine and covering a wide range of topics, including case control studies, retrospective cohort studies, retrospective studies, clinical trials studies, observational studies, prospective studies, randomized controlled trials, randomized clinical trials, systematic reviews, meta-analysis, and case reports.

INDEXING/ABSTRACTING

The WJCC is now indexed in Science Citation Index Expanded (also known as SciSearch®), Journal Citation Reports/Science Edition, Scopus, PubMed, and PubMed Central. The 2021 Edition of Journal Citation Reports® cites the 2020 impact factor (IF) for WJCC as 1.337; IF without journal self cites: 1.301; 5-year IF: 1.742; Journal Citation Indicator: 0.33; Ranking: 119 among 169 journals in medicine, general and internal; and Quartile category: Q3. The WJCC's CiteScore for 2020 is 0.8 and Scopus CiteScore rank 2020: General Medicine is 493/793.

RESPONSIBLE EDITORS FOR THIS ISSUE

Production Editor: Hua-Ge Yin, Production Department Director: Xu Guo, Editorial Office Director: Jin-Lei Wang.

NAME OF JOURNAL

World Journal of Clinical Cases

ISSN

ISSN 2307-8960 (online)

LAUNCH DATE

April 16, 2013

FREQUENCY

Thrice Monthly

EDITORS-IN-CHIEF

Bao-Gan Peng, Jerzy Tadeusz Chudek, George Kontogeorgos, Maurizio Serati, Ja Hyeon Ku

EDITORIAL BOARD MEMBERS

<https://www.wjgnet.com/2307-8960/editorialboard.htm>

PUBLICATION DATE

May 16, 2022

COPYRIGHT

© 2022 Baishideng Publishing Group Inc

INSTRUCTIONS TO AUTHORS

<https://www.wjgnet.com/bpg/gerinfo/204>

GUIDELINES FOR ETHICS DOCUMENTS

<https://www.wjgnet.com/bpg/GerInfo/287>

GUIDELINES FOR NON-NATIVE SPEAKERS OF ENGLISH

<https://www.wjgnet.com/bpg/gerinfo/240>

PUBLICATION ETHICS

<https://www.wjgnet.com/bpg/GerInfo/288>

PUBLICATION MISCONDUCT

<https://www.wjgnet.com/bpg/gerinfo/208>

ARTICLE PROCESSING CHARGE

<https://www.wjgnet.com/bpg/gerinfo/242>

STEPS FOR SUBMITTING MANUSCRIPTS

<https://www.wjgnet.com/bpg/GerInfo/239>

ONLINE SUBMISSION

<https://www.f6publishing.com>



Development of plasma cell dyscrasias in a patient with chronic myeloid leukemia: A case report

Na Zhang, Ting-De Jiang, Shu-Hua Yi

Specialty type: Hematology

Provenance and peer review:

Unsolicited article; Externally peer reviewed.

Peer-review model: Single blind

Peer-review report's scientific quality classification

Grade A (Excellent): 0

Grade B (Very good): B

Grade C (Good): C

Grade D (Fair): 0

Grade E (Poor): 0

P-Reviewer: Ikeda HO, Japan;
Imanse SM, United States

Received: December 23, 2021

Peer-review started: December 23, 2021

First decision: January 25, 2022

Revised: February 21, 2022

Accepted: March 17, 2022

Article in press: March 17, 2022

Published online: May 16, 2022



Na Zhang, Ting-De Jiang, Department of Hematology, People's Hospital of Deyang, Deyang 618000, Sichuan Province, China

Shu-Hua Yi, Hematology Hospital of the Institute of Hematology, Chinese Academy of Medical Sciences, Tianjin 300020, China

Corresponding author: Shu-Hua Yi, MD, Attending Doctor, Hematology Hospital of the Institute of Hematology, Chinese Academy of Medical Sciences, No. 288 Nanjing Road, Tianjin 300020, China. 3378465425@qq.com

Abstract

BACKGROUND

Chronic myeloid leukemia (CML) is a clonal hematopoietic stem cell disorder. Plasma cell dyscrasias are a rare heterogeneous group of hematological disorders. The co-occurrence of CML and plasma cell dyscrasias in the same patient is an extremely rare incident and has been reported in several cases in the literature.

CASE SUMMARY

In the present report, we described a rare case of the co-occurrence of CML and plasma cell dyscrasias in a 48-year-old man, and we discussed the reason why monoclonal gammopathy of undetermined significance progressed to smoldering multiple myeloma and eventually to multiple myeloma while being treated with dasatinib for CML. The tyrosine kinase inhibitor treatment and cytogenetic change may contribute to this phenomenon, and clonal hematopoiesis of indeterminate potential may lead to both CML and multiple myeloma cells in a patient. Future studies are warranted to further explain the hidden reasons.

CONCLUSION

This case highlights that gene translocation may contribute to initiation and sustainability of clonal proliferation. Moreover, the treatment with tyrosine kinase inhibitor and cytogenetic change may contribute to progression from monoclonal gammopathy of undetermined significance to smoldering multiple myeloma and eventually to multiple myeloma.

Key Words: Chronic myeloid leukemia; Plasma cell dyscrasias; Multiple myeloma; Tyrosine kinase inhibitor; Translocation; Case report

©The Author(s) 2022. Published by Baishideng Publishing Group Inc. All rights reserved.

Core Tip: Here we describe a patient with chronic myeloid leukemia complicated with plasma cell dyscrasias receiving dasatinib. He developed monoclonal gammopathy of undetermined significance that progressed to smoldering multiple myeloma and eventually to multiple myeloma. This case highlights that gene translocation may contribute to initiating and sustaining clonal proliferation. Tyrosine kinase inhibitors and cytogenetic change may lead to the progression.

Citation: Zhang N, Jiang TD, Yi SH. Development of plasma cell dyscrasias in a patient with chronic myeloid leukemia: A case report. *World J Clin Cases* 2022; 10(14): 4698-4703

URL: <https://www.wjgnet.com/2307-8960/full/v10/i14/4698.htm>

DOI: <https://dx.doi.org/10.12998/wjcc.v10.i14.4698>

INTRODUCTION

Chronic myeloid leukemia (CML) is a clonal hematopoietic stem cell disorder, which is defined by the presence of Philadelphia chromosome in a patient with a myeloproliferative neoplasm. Plasma cell dyscrasias (PCD) are a rare heterogeneous group of hematological disorders, which include monoclonal gammopathy of undetermined significance (MGUS), multiple myeloma (MM), systemic amyloid light chain amyloidosis, and polyneuropathy, organomegaly, endocrinopathy, M-protein, skin changes syndrome, *etc*[1,2]. MGUS is an asymptomatic, premalignant disorder characterized by monoclonal plasma cell proliferation in the bone marrow and absence of end-organ damage such as osteolytic bone lesions, anemia, or renal failure[3]. It shows the risk of progression to MM and associated plasma cell neoplasms[4]. MM arises from the malignant transformation of post-germinal center plasma cells. The origin of the cells is distinctly different in CML and PCD. There were several cases of coexistence of CML and MM. However, there was few distinctive report about the evolution from MGUS to smoldering multiple myeloma (SMM) and to MM in patients with CML complicated with PCD. In this case report, we described a patient who developed MGUS that progressed to SMM and eventually to MM while being treated with dasatinib for CML. The tyrosine kinase inhibitor (TKI) treatment and cytogenetic change may contribute to this phenomenon.

CASE PRESENTATION

Chief complaints

A 48-year-old man who was admitted to our hospital was diagnosed with leukocytosis with white blood cell count of $25.2 \times 10^9/L$, hemoglobin level of 149 g/L, platelet count of $330 \times 10^9/L$, eosinophils level of $0.99 \times 10^9/L$, and basophil level of $1.38 \times 10^9/L$ without any complaints during the health examination.

History of present illness

No special physical signs and symptoms were reported before. He did not appear to have a history of exposure to toxic agents or irradiation.

History of past illness

The patient did not have previous medical history.

Physical examination

No other special physical signs.

Laboratory examinations

At first, his serum creatinine was 110.18 $\mu\text{mol/L}$. His lactate dehydrogenase was 364.04 U/L. His total protein and albumin were normal. His 24-h urine for total protein was 1.82 g/24 h. His serum immunofixation electrophoresis was weakly positive. Quantitative reverse transcription PCR using international scale for BCR/ABL P210 (blood) was 48.02%. The bone marrow plasma cells percentage was 1%. The diagnosis of CML was confirmed by quantitative PCR analysis 4 mo after he received dasatinib.

In December 2020, fluorescence *in situ* hybridization (FISH) for t(9;22) (q34;q11) was negative and BCR/ABL transcript has decreased from 48.02% to 0.25%. Then the percentage of bone marrow mature plasma cells was 4%. Serum free light chain ratio (κ/λ) was 85.62.

In March 2021, his BCR/ABL transcript was 0.06% and rFLC (κ -FLC: λ -FLC) was 93.56%. Serum immunofixation electrophoresis and serum protein electrophoresis were negative. M1-protein in urine protein electrophoresis was 89.99%. Urine immunofixation electrophoresis revealed the presence of monoclonal light chain κ . The percentage of plasma cells in bone marrow was about 11.5% (Figure 1). Whole-body low-dose computed tomography scan documented no osteolytic lesions.

In April 2021, his BCR/ABL transcript was 0. At this time, serum immunofixation electrophoresis showed monoclonal light chain κ , but serum protein electrophoresis was still negative, and rFLC (κ -FLC: λ -FLC) was 144.43. The 24-h urine for total protein rose to 3.84 g/24 h. M1-protein in urine protein electrophoresis was 88.47%. Cytogenetic karyotyping results revealed normal male chromosome complement.

Imaging examinations

FISH analysis for the immunoglobulin heavy chain locus on chromosome 14q32 was positive (Figure 2A and B). FISH analysis for RB-1/LAMP1 showed deletion of chromosome 13q14 (Figure 2C and D). Another FISH analysis was normal for immunoglobulin heavy chain partner gene arrangement, CKS1B/CDKN2C and P53/CEP17.

FINAL DIAGNOSIS

The final diagnosis for the present case was the coexistence of CML and MM.

TREATMENT

Now he is receiving bortezomib, lenalidomide, and dexamethasone chemotherapy with simultaneously continued oral dasatinib. After 4 to 6 cycles of bortezomib, lenalidomide, and dexamethasone treatment when he achieves complete response, he will receive an allogeneic hematopoietic stem cell transplantation.

OUTCOME AND FOLLOW-UP

He has finished six cycles of chemotherapy with bortezomib, lenalidomide, and dexamethasone, and he has already completed a pretransplant match. In 1 mo, he will receive an allogeneic transplant.

DISCUSSION

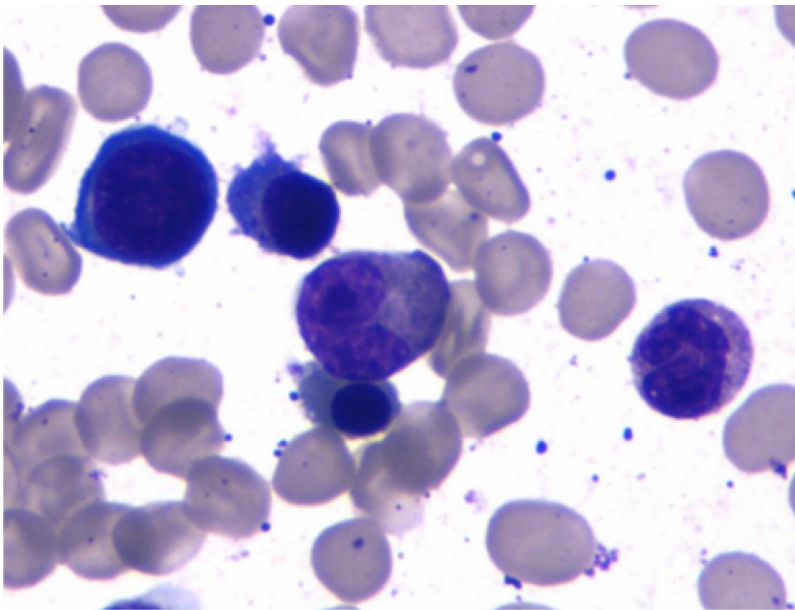
CML is a clonal myeloproliferative neoplasm derived from an abnormal multipotent hemopoietic stem cell that has acquired the BCR-ABL1 fusion gene, usually through t(9;22) (q34;q11), also known as the Philadelphia chromosome. The derivation of this clonal population from a multipotent hematopoietic stem cell was supported by cytogenetic studies[5]. In rare cases, BCR-ABL1 has been described in essential thrombocytosis, myelodysplastic syndrome, MM, and malignant lymphoma.

MGUS is a clinically asymptomatic premalignant clonal plasma cell. Smoldering myeloma describes a stage of disease that has no symptoms and no related organ or tissue impairment.

In this case, the patient was diagnosed with CML initially, and 4 mo later was confirmed with a diagnosis of MGUS, which ultimately progressed to MM. The hypothesis is that CML and MGUS can occur simultaneously because of elevated serum light chain at the time of diagnosis of CML. Regrettably, no further examination was carried out at that time to verify the simultaneous occurrence of CML and MGUS.

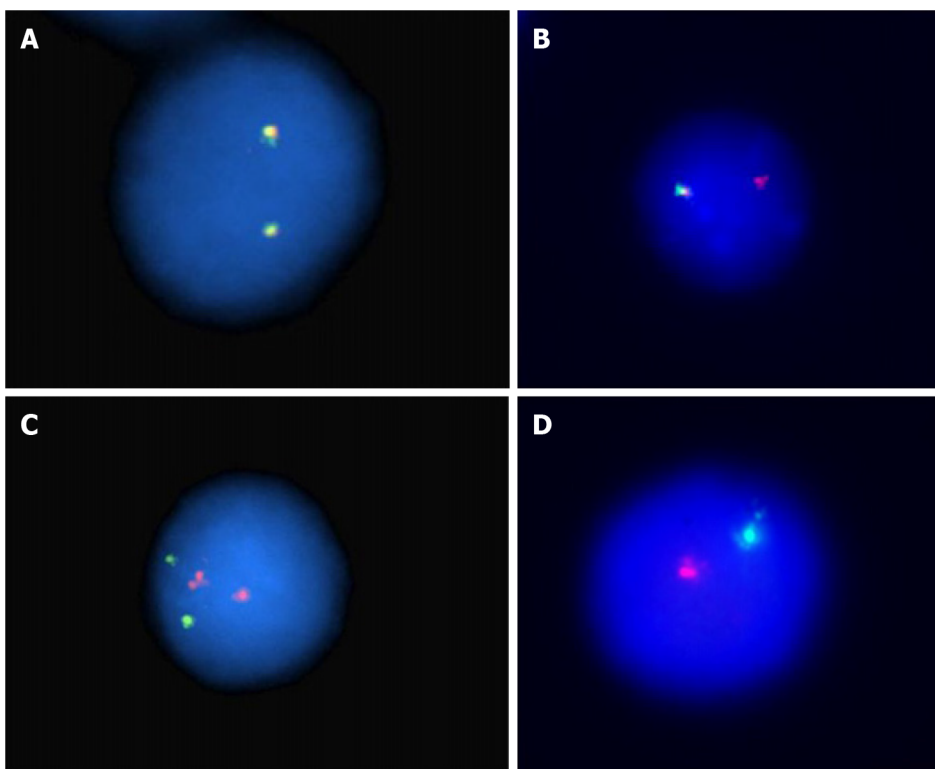
The cause of coexistence of CML and PCD in 1 patient remains unclear. The paramount etiology may be what precursors commonly referred to as “clonal hematopoiesis of indeterminate potential” leads to both CML and MM cells in a patient[6]. Clonal hematopoiesis is often detected by next-generation sequencing, chromosomal analysis, FISH analysis, PCR, and other techniques. Dysplasia and blasts were not discovered in bone marrow in the early stage of the disease, which could not verify the pathogenesis. Meanwhile a new study also showed that all patients with myeloma go through the stage of MGUS, but it is often unrecognized for some reason or it is subclinical[7].

Another hypothesis is secondary malignancies related to TKI treatment of CML. Gunnarsson *et al*[8] studied 868 patients diagnosed with CML in Sweden in 2002, and results indicated that CML patients had a high risk of developing a second malignancy in the TKI era. The common malignancies include the following: gastrointestinal cancer, nose and throat cancer, prostate cancer, and breast cancer but not hematological cancer. However, whether the cause leading to a secondary malignancy is associated with



DOI: 10.12998/wjcc.v10.i14.4698 Copyright ©The Author(s) 2022.

Figure 1 Wright Giemsa stain. Bone marrow aspirate in the patient with multiple myeloma illustrated a preponderance of mostly mature-appearing plasma cells constituting 11.5% of the cells.



DOI: 10.12998/wjcc.v10.i14.4698 Copyright ©The Author(s) 2022.

Figure 2 Interphase fluorescence *in situ* hybridization analysis. A: Interphase fluorescence *in situ* hybridization analysis for the immunoglobulin heavy chain locus on chromosome 14q32. Normal reference; B: 14q32 deletion with only one red signal; C: Interphase fluorescence *in situ* hybridization analysis. Normal reference; D: Monosomy of chromosome 13 with only one red and one green signal.

TKI treatment or CML disease itself is uncertain. After all, multiple studies displayed that secondary cancers in CML were often found in early stage after the diagnosis of CML. The higher immunosuppressive effects and the DNA repair mechanisms of TKI may be involved in the phenomenon. For CML disease itself, BCR/ABL also participates in regulating cell apoptosis, proliferation, and intercellular interactions and promotes genomic instability, *etc.* Therefore, both the TKI treatment and CML disease itself may play an important role in the coexistence of CML and PCD in our case[8,9].

Studies show that the rate of progression from MGUS to MM is 1% per year but approximately 10% per year for SMM[10]. We want to know more about how this patient progressed from MGUS to SMM and then to MM under the circumstances of CML. Gene translocation may contribute to initiating and sustaining clonal proliferation. The common translocation at 14q32 and deletion of 13 in normal cells promote the genomic instability that results in the occurrence of MGUS/SMM. Finally, mutations in *RAS* genes, p16 methylation, abnormalities involving *myc* family of oncogenes, secondary translocations, p53 mutations, and angiogenesis play an important role in promoting the development of MGUS/SMM into MM. In addition to that, a higher serum free light chain ratio has been shown recently to be an important risk factor for the progression[3]. In this case, translocations at 14q32 and deletion of 13 in the patient was probably associated with the progression to MM.

CONCLUSION

Reports of the co-occurrence of CML and PCD in the same patient are rare. In the present report, we described a patient with CML. He received chemotherapy and oral dasatinib as therapy. During the follow-up, he developed MGUS and progressed to SMM and eventually to MM. Finally, the patient was diagnosed with CML and MM. TKI and cytogenetic change are thought to potentially contribute to his disease progression. Further studies should be made to better understand the etiology of the coexistence of CML and PCD.

FOOTNOTES

Author contributions: Zhang N, Jiang TD and Yi SH designed and wrote this manuscript; Zhang N revised the manuscript; all authors reviewed and approved the final version to be published.

Informed consent statement: All study participants, or their legal guardian, provided informed written consent prior to study enrollment.

Conflict-of-interest statement: The authors declared no conflict of interest.

CARE Checklist (2016) statement: The authors have read the CARE Checklist (2016), and the manuscript was prepared and revised according to the CARE Checklist (2016).

Open-Access: This article is an open-access article that was selected by an in-house editor and fully peer-reviewed by external reviewers. It is distributed in accordance with the Creative Commons Attribution NonCommercial (CC BY-NC 4.0) license, which permits others to distribute, remix, adapt, build upon this work non-commercially, and license their derivative works on different terms, provided the original work is properly cited and the use is non-commercial. See: <https://creativecommons.org/licenses/by-nc/4.0/>

Country/Territory of origin: China

ORCID number: Na Zhang 0000-0001-8028-7643; Ting-De Jiang 0000-0002-2023-2891; Shu-Hua Yi 0000-0002-2041-8776.

S-Editor: Wang JL

L-Editor: Filipodia

P-Editor: Wang JL

REFERENCES

- 1 Gavriatopoulou M, Fotiou D, Ntanas-Stathopoulos I, Kastritis E, Terpos E, Dimopoulos MA. How I treat elderly patients with plasma cell dyscrasias. *Aging (Albany NY)* 2018; **10**: 4248-4268 [PMID: 30568029 DOI: 10.18632/aging.101707]
- 2 Gavriatopoulou M, Musto P, Caers J, Merlini G, Kastritis E, van de Donk N, Gay F, Hegenbart U, Hajek R, Zweegman S, Bruno B, Straka C, Dimopoulos MA, Einsele H, Boccadoro M, Sonneveld P, Engelhardt M, Terpos E. European myeloma network recommendations on diagnosis and management of patients with rare plasma cell dyscrasias. *Leukemia* 2018; **32**: 1883-1898 [PMID: 30038381 DOI: 10.1038/s41375-018-0209-7]
- 3 Rajkumar SV. MGUS and smoldering multiple myeloma: update on pathogenesis, natural history, and management. *Hematology Am Soc Hematol Educ Program* 2005; 340-345 [PMID: 16304401 DOI: 10.1182/asheducation-2005.1.340]
- 4 Ouyang W, Zhao X, Lu S, Wang Z. Prevalence of monoclonal gammopathy of uncertain significance in chronic myeloid leukemia: A case report. *Medicine (Baltimore)* 2018; **97**: e13103 [PMID: 30383696 DOI: 10.1097/MD.00000000000013103]
- 5 Whang J, Frei E 3rd, Tjio JH, Carbone PP, Brecher G. The distribution of the Philadelphia chromosome in patients with

- chronic myelogenous leukemia. *Blood* 1963; **22**: 664-673 [PMID: [14084628](#)]
- 6 **Miki K**, Obara N, Makishima K, Sakamoto T, Kusakabe M, Kato T, Kurita N, Nishikii H, Yokoyama Y, Sakata-Yanagimoto M, Hasegawa Y, Chiba S. An Unprecedented Case of p190 *BCR-ABL* Chronic Myeloid Leukemia Diagnosed during Treatment for Multiple Myeloma: A Case Report and Review of the Literature. *Case Rep Hematol* 2018; **2018**: 7863943 [PMID: [30405922](#) DOI: [10.1155/2018/7863943](#)]
- 7 **Boyle EM**, Davies FE, Leleu X, Morgan GJ. Understanding the multiple biological aspects leading to myeloma. *Haematologica* 2014; **99**: 605-612 [PMID: [24688108](#) DOI: [10.3324/haematol.2013.097907](#)]
- 8 **Gunnarsson N**, Stenke L, Höglund M, Sandin F, Björkholm M, Dreimane A, Lambe M, Markevörn B, Olsson-Strömberg U, Richter J, Wadenvik H, Wallvik J, Sjölander A. Second malignancies following treatment of chronic myeloid leukaemia in the tyrosine kinase inhibitor era. *Br J Haematol* 2015; **169**: 683-688 [PMID: [25817799](#) DOI: [10.1111/bjh.13346](#)]
- 9 **Kumar V**, Garg M, Chaudhary N, Chandra AB. An observational study on risk of secondary cancers in chronic myeloid leukemia patients in the TKI era in the United States. *PeerJ* 2018; **6**: e4342 [PMID: [29456888](#) DOI: [10.7717/peerj.4342](#)]
- 10 **Ide M**, Kuwahara N, Matsuishi E, Kimura S, Gondo H. Uncommon case of chronic myeloid leukemia with multiple myeloma. *Int J Hematol* 2010; **91**: 699-704 [PMID: [20352382](#) DOI: [10.1007/s12185-010-0546-4](#)]



Published by **Baishideng Publishing Group Inc**
7041 Koll Center Parkway, Suite 160, Pleasanton, CA 94566, USA

Telephone: +1-925-3991568

E-mail: bpgoffice@wjgnet.com

Help Desk: <https://www.f6publishing.com/helpdesk>

<https://www.wjgnet.com>

