

World Journal of *Clinical Cases*

World J Clin Cases 2022 January 14; 10(2): 397-752



Contents

Thrice Monthly Volume 10 Number 2 January 14, 2022

EDITORIAL

- 397 New trends in treatment of muscle fatigue throughout rehabilitation of elderlies with motor neuron diseases
Mohamed A

MINIREVIEWS

- 401 What emotion dimensions can affect working memory performance in healthy adults? A review
Hou TY, Cai WP
- 412 Quadrilateral plate fractures of the acetabulum: Classification, approach, implant therapy and related research progress
Zhou XF, Gu SC, Zhu WB, Yang JZ, Xu L, Fang SY

ORIGINAL ARTICLE

Case Control Study

- 426 Methylprednisolone accelerate chest computed tomography absorption in COVID-19: A three-centered retrospective case control study from China
Lin L, Xue D, Chen JH, Wei QY, Huang ZH

Retrospective Study

- 437 Analysis of photostimulable phosphor image plate artifacts and their prevalence
Elkhateeb SM, Aloyouny AY, Omer MMS, Mansour SM
- 448 N6-methyladenine-modified DNA was decreased in Alzheimer's disease patients
Lv S, Zhou X, Li YM, Yang T, Zhang SJ, Wang Y, Jia SH, Peng DT
- 458 Inflammation-related indicators to distinguish between gastric stromal tumors and leiomyomas: A retrospective study
Zhai YH, Zheng Z, Deng W, Yin J, Bai ZG, Liu XY, Zhang J, Zhang ZT
- 469 Relationship between Ki-67 and CD44 expression and microvascular formation in gastric stromal tumor tissues
Ma B, Huang XT, Zou GJ, Hou WY, Du XH
- 477 Modified surgical method of supra- and infratentorial epidural hematoma and the related anatomical study of the squamous part of the occipital bone
Li RC, Guo SW, Liang C
- 485 Combined molybdenum target X-ray and magnetic resonance imaging examinations improve breast cancer diagnostic efficacy
Gu WQ, Cai SM, Liu WD, Zhang Q, Shi Y, Du LJ

- 492 Value of thyroglobulin combined with ultrasound-guided fine-needle aspiration cytology for diagnosis of lymph node metastasis of thyroid carcinoma

Zhang LY, Chen Y, Ao YZ

- 502 Locking compression plate + T-type steel plate for postoperative weight bearing and functional recovery in complex tibial plateau fractures

Li HF, Yu T, Zhu XF, Wang H, Zhang YQ

- 511 Effect of Mirena placement on reproductive hormone levels at different time intervals after artificial abortion

Jin XX, Sun L, Lai XL, Li J, Liang ML, Ma X

- 518 Diagnostic value of artificial intelligence automatic detection systems for breast BI-RADS 4 nodules

Lyu SY, Zhang Y, Zhang MW, Zhang BS, Gao LB, Bai LT, Wang J

Clinical Trials Study

- 528 Analysis of 20 patients with laparoscopic extended right colectomy

Zheng HD, Xu JH, Liu YR, Sun YF

Observational Study

- 538 Knowledge, attitude, practice and factors that influence the awareness of college students with regards to breast cancer

Zhang QN, Lu HX

- 547 Diagnosing early scar pregnancy in the lower uterine segment after cesarean section by intracavitary ultrasound

Cheng XL, Cao XY, Wang XQ, Lin HL, Fang JC, Wang L

- 554 Impact of failure mode and effects analysis-based emergency management on the effectiveness of craniocerebral injury treatment

Shao XL, Wang YZ, Chen XH, Ding WJ

- 563 Predictive value of alarm symptoms in Rome IV irritable bowel syndrome: A multicenter cross-sectional study

Yang Q, Wei ZC, Liu N, Pan YL, Jiang XS, Tantai XX, Yang Q, Yang J, Wang JJ, Shang L, Lin Q, Xiao CL, Wang JH

Prospective Study

- 576 5-min mindfulness audio induction alleviates psychological distress and sleep disorders in patients with COVID-19

Li J, Zhang YY, Cong XY, Ren SR, Tu XM, Wu JF

META-ANALYSIS

- 585 Efficacy and safety of argatroban in treatment of acute ischemic stroke: A meta-analysis

Ly B, Guo FF, Lin JC, Jing F

SCIENTOMETRICS

- 594 Biologic therapy for Crohn's disease over the last 3 decades
Shen JL, Zhou Z, Cao JS, Zhang B, Hu JH, Li JY, Liu XM, Juengpanich S, Li MS, Feng X

CASE REPORT

- 607 Novel compound heterozygous GPR56 gene mutation in a twin with lissencephaly: A case report
Lin WX, Chai YY, Huang TT, Zhang X, Zheng G, Zhang G, Peng F, Huang YJ
- 618 Patients with SERPINC1 rs2227589 polymorphism found to have multiple cerebral venous sinus thromboses despite a normal antithrombin level: A case report
Liao F, Zeng JL, Pan JG, Ma J, Zhang ZJ, Lin ZJ, Lin LF, Chen YS, Ma XT
- 625 Successful management of delirium with dexmedetomidine in a patient with haloperidol-induced neuroleptic malignant syndrome: A case report
Yang CJ, Chiu CT, Yeh YC, Chao A
- 631 Malignant solitary fibrous tumor in the central nervous system treated with surgery, radiotherapy and anlotinib: A case report
Zhang DY, Su L, Wang YW
- 643 Anesthesia and perioperative management for giant adrenal Ewing's sarcoma with inferior vena cava and right atrium tumor thrombus: A case report
Wang JL, Xu CY, Geng CJ, Liu L, Zhang MZ, Wang H, Xiao RT, Liu L, Zhang G, Ni C, Guo XY
- 656 Full-endoscopic spine surgery treatment of lumbar foraminal stenosis after osteoporotic vertebral compression fractures: A case report
Zhao QL, Hou KP, Wu ZX, Xiao L, Xu HG
- 663 Ethambutol-induced optic neuropathy with rare bilateral asymmetry onset: A case report
Sheng WY, Wu SQ, Su LY, Zhu LW
- 671 Vitrectomy with residual internal limiting membrane covering and autologous blood for a secondary macular hole: A case report
Ying HF, Wu SQ, Hu WP, Ni LY, Zhang ZL, Xu YG
- 677 Intervertebral bridging ossification after kyphoplasty in a Parkinson's patient with Kummell's disease: A case report
Li J, Liu Y, Peng L, Liu J, Cao ZD, He M
- 685 Synovial chondromatosis of the hip joint in a 6 year-old child: A case report
Yi RB, Gong HL, Arthur DT, Wen J, Xiao S, Tang ZW, Xiang F, Wang KJ, Song ZQ
- 691 Orthodontic retreatment of an adult woman with mandibular backward positioning and temporomandibular joint disorder: A case report
Yu LY, Xia K, Sun WT, Huang XQ, Chi JY, Wang LJ, Zhao ZH, Liu J

- 703** Autosomal recessive spinocerebellar ataxia type 4 with a *VPS13D* mutation: A case report
Huang X, Fan DS
- 709** Primary adrenal diffuse large B-cell lymphoma with normal adrenal cortex function: A case report
Fan ZN, Shi HJ, Xiong BB, Zhang JS, Wang HF, Wang JS
- 717** Varicella-zoster virus-associated meningitis, encephalitis, and myelitis with sporadic skin blisters: A case report
Takami K, Kenzaka T, Kumabe A, Fukuzawa M, Eto Y, Nakata S, Shinohara K, Endo K
- 725** Tension pneumocephalus following endoscopic resection of a mediastinal thoracic spinal tumor: A case report
Chang CY, Hung CC, Liu JM, Chiu CD
- 733** Accelerated Infliximab Induction for Severe Lower Gastrointestinal Bleeding in a Young Patient with Crohn's Disease: A Case Report
Zeng J, Shen F, Fan JG, Ge WS
- 741** Occupational fibrotic hypersensitivity pneumonia in a halogen dishes manufacturer: A case report
Wang M, Fang HH, Jiang ZF, Ye W, Liu RY
- 747** Using a fretsaw in treating chronic penial incarceration: A case report
Zhao Y, Xue XQ, Huang HF, Xie Y, Ji ZG, Fan XR

ABOUT COVER

Associate Editor of *World Journal of Clinical Cases*, Bruno Ramos Chrcanovic, DDS, MSc, PhD, Associate Professor, Department of Prosthodontics, Malmö University, Malmö 241 21, Sweden. bruno.chrcanovic@mau.se

AIMS AND SCOPE

The primary aim of *World Journal of Clinical Cases* (WJCC, *World J Clin Cases*) is to provide scholars and readers from various fields of clinical medicine with a platform to publish high-quality clinical research articles and communicate their research findings online.

WJCC mainly publishes articles reporting research results and findings obtained in the field of clinical medicine and covering a wide range of topics, including case control studies, retrospective cohort studies, retrospective studies, clinical trials studies, observational studies, prospective studies, randomized controlled trials, randomized clinical trials, systematic reviews, meta-analysis, and case reports.

INDEXING/ABSTRACTING

The WJCC is now indexed in Science Citation Index Expanded (also known as SciSearch®), Journal Citation Reports/Science Edition, Scopus, PubMed, and PubMed Central. The 2021 Edition of Journal Citation Reports® cites the 2020 impact factor (IF) for WJCC as 1.337; IF without journal self cites: 1.301; 5-year IF: 1.742; Journal Citation Indicator: 0.33; Ranking: 119 among 169 journals in medicine, general and internal; and Quartile category: Q3. The WJCC's CiteScore for 2020 is 0.8 and Scopus CiteScore rank 2020: General Medicine is 493/793.

RESPONSIBLE EDITORS FOR THIS ISSUE

Production Editor: *Jia-Hui Li*; Production Department Director: *Xu Guo*; Editorial Office Director: *Jim-Lai Wang*.

NAME OF JOURNAL

World Journal of Clinical Cases

ISSN

ISSN 2307-8960 (online)

LAUNCH DATE

April 16, 2013

FREQUENCY

Thrice Monthly

EDITORS-IN-CHIEF

Bao-Gan Peng, Jerzy Tadeusz Chudek, George Kontogeorgos, Maurizio Serati, Ja Hyeon Ku

EDITORIAL BOARD MEMBERS

<https://www.wjgnet.com/2307-8960/editorialboard.htm>

PUBLICATION DATE

January 14, 2022

COPYRIGHT

© 2022 Baishideng Publishing Group Inc

INSTRUCTIONS TO AUTHORS

<https://www.wjgnet.com/bpg/gerinfo/204>

GUIDELINES FOR ETHICS DOCUMENTS

<https://www.wjgnet.com/bpg/GerInfo/287>

GUIDELINES FOR NON-NATIVE SPEAKERS OF ENGLISH

<https://www.wjgnet.com/bpg/gerinfo/240>

PUBLICATION ETHICS

<https://www.wjgnet.com/bpg/GerInfo/288>

PUBLICATION MISCONDUCT

<https://www.wjgnet.com/bpg/gerinfo/208>

ARTICLE PROCESSING CHARGE

<https://www.wjgnet.com/bpg/gerinfo/242>

STEPS FOR SUBMITTING MANUSCRIPTS

<https://www.wjgnet.com/bpg/GerInfo/239>

ONLINE SUBMISSION

<https://www.f6publishing.com>



Primary adrenal diffuse large B-cell lymphoma with normal adrenal cortex function: A case report

Zhi-Nan Fan, Hong-Jin Shi, Bo-Bo Xiong, Jin-Song Zhang, Hai-Feng Wang, Jian-Song Wang

ORCID number: Zhi-Nan Fan 0000-0003-4547-4202; Hong-Jin Shi 0000-0001-9883-270X; Bo-Bo Xiong 0000-0001-6121-9565; Jin-Song Zhang 0000-0003-3271-3454; Hai-Feng Wang 0000-0003-0360-1402; Jian-Song Wang 0000-0002-2140-1618.

Author contributions: Fan ZN, Shi HJ, and Xiong BB reviewed the literature and contributed to manuscript drafting; Zhang JS was responsible for the revision of the manuscript for important intellectual content; Wang HF and Wang JS provided technical guidance; all authors issued final approval for the version to be submitted.

Informed consent statement: Informed written consent was obtained from the patient for publication of this report and any accompanying images.

Conflict-of-interest statement: The authors declare that they have no conflict of interest.

CARE Checklist (2016) statement: The authors have read the CARE Checklist (2016), and the manuscript was prepared and revised according to the CARE Checklist (2016).

Supported by National Natural Science Foundation of China, No. 82060464 and No. 81972395.

Zhi-Nan Fan, Hong-Jin Shi, Bo-Bo Xiong, Jin-Song Zhang, Hai-Feng Wang, Jian-Song Wang, Department of Urology, The Second Affiliated Hospital, Kunming Medical University, Kunming 650000, Yunnan Province, China

Corresponding author: Jin-Song Zhang, Doctor, Department of Urology, The Second Affiliated Hospital, Kunming Medical University, No. 374 Dianmian Avenue, Wuhua District, Kunming 650000, Yunnan Province, China. 945933392zjs@sina.com

Abstract

BACKGROUND

Diffuse large B-cell lymphoma, which accounts for about approximately 30% to 40% of non-Hodgkin's lymphomas, is the most common type and is a class of aggressive B-cell lymphomas. However, diffuse large B-cell lymphomas primary to the adrenal gland are rare.

CASE SUMMARY

A 73-year-old man was admitted with abdominal pain and fatigue. After admission, enhanced adrenal computed tomography indicated irregular masses on both adrenal glands, with the larger one on the left side, approximately 8.0 cm × 4.3 cm in size. The boundary was irregular, and surrounding tissues were compressed. No obvious enhancement was observed in the arterial phase. Resection of the left adrenal gland was performed. Pathological diagnosis revealed diffuse large B-cell lymphoma. After surgery, the patient received R-CHOP immunochemotherapy. During the fourth immunochemotherapy, patient condition deteriorated, and he eventually died of respiratory failure.

CONCLUSION

R-CHOP is the conventional immunochemotherapy for primary adrenal diffuse large B-cell lymphoma. Surgery is mainly used to diagnose the disease. Hence, the ideal treatment plan remains to be confirmed.

Key Words: Large B-cell lymphoma; Adrenal glands; Immunochemotherapy; Surgical procedures; Case report

©The Author(s) 2022. Published by Baishideng Publishing Group Inc. All rights reserved.

Country/Territory of origin: China**Specialty type:** Urology and nephrology**Provenance and peer review:**

Unsolicited article; Externally peer reviewed.

Peer-review model: Single blind**Peer-review report's scientific quality classification**

Grade A (Excellent): 0

Grade B (Very good): B

Grade C (Good): 0

Grade D (Fair): D

Grade E (Poor): 0

Open-Access: This article is an open-access article that was selected by an in-house editor and fully peer-reviewed by external reviewers. It is distributed in accordance with the Creative Commons Attribution NonCommercial (CC BY-NC 4.0) license, which permits others to distribute, remix, adapt, build upon this work non-commercially, and license their derivative works on different terms, provided the original work is properly cited and the use is non-commercial. See: <http://creativecommons.org/licenses/by-nc/4.0/>

Received: July 31, 2021**Peer-review started:** July 31, 2021**First decision:** October 22, 2021**Revised:** November 2, 2021**Accepted:** December 10, 2021**Article in press:** December 10, 2021**Published online:** January 14, 2022**P-Reviewer:** Glumac S, Novo M**S-Editor:** Liu JH**L-Editor:** A**P-Editor:** Liu JH

Core Tip: Primary adrenal diffuse large B-cell lymphoma is a rare disease with no consistent treatment standards. The R-CHOP regimen is the conventional immuno-chemotherapy regimen for this disease. We report a case of surgery combined with immunochemotherapy; however, immunochemotherapy was ineffective and the patient eventually died of respiratory failure. Therefore, the optimal treatment of primary adrenal diffuse large B-cell lymphoma remains to be further explored.

Citation: Fan ZN, Shi HJ, Xiong BB, Zhang JS, Wang HF, Wang JS. Primary adrenal diffuse large B-cell lymphoma with normal adrenal cortex function: A case report. *World J Clin Cases* 2022; 10(2): 709-716

URL: <https://www.wjgnet.com/2307-8960/full/v10/i2/709.htm>

DOI: <https://dx.doi.org/10.12998/wjcc.v10.i2.709>

INTRODUCTION

Diffuse large B-cell lymphoma (DLBCL), which accounts for approximately 30% to 40% of non-Hodgkin's lymphoma, is the most common type among the aggressive B-cell lymphomas[1]. Diffuse large B-cell lymphomas that originate in the adrenal glands are rare. Primary adrenal DLBCL (PADLBCL) is a highly malignant tumor with no specific clinical manifestations and thus, requires early diagnosis and treatment. The main manifestations of PADLBCL in patients are abdominal pain, fatigue, fever, night sweats, weight loss, and adrenal cortex insufficiency. Imaging often shows adrenal occupancy; however, clear diagnosis requires adrenal biopsy or postoperative specimen examination. To date, no unified treatment standard exists, and PADLBCL is mainly treated with immunochemotherapy, and yet has poor prognosis. Currently, there have been only few reports on PADLBCL. We here report a case of bilateral PADLBCL. Combined with related literature and our observations, we have analyzed the clinical, imaging, and pathological characteristics of PADLBCL, and discussed the current related treatment methods and prognostic factors, with an aim to deepen the understanding of this disease.

CASE PRESENTATION

Chief complaints

A 73-year-old man was admitted in our hospital with abdominal pain and fatigue lasting 1 mo.

History of present illness

One month before his admission, the patient developed persistent abdominal pain without obvious incentives, such as tolerable dull pain on the left side, without abdominal distension, lethargy, cold sensitivity, itchy skin, and change in skin color, among other symptoms. Since the start of the symptoms, the patient had poor appetite and spirit, and lost more than 10 kg weight.

History of past illness

The patient had no history of surgery, trauma, or other diseases.

Personal and family history

There was no history of hereditary diseases. No family members had similar symptoms.

Physical examination

The physical examination of the patient was unremarkable.

Laboratory examinations

Routine blood tests, liver and kidney function test, blood coagulation function test, hormone-related examination, and tumor marker analysis showed no obvious

abnormalities. In addition, the level of serum potassium was normal.

Imaging examinations

The adrenal enhancement computed tomography (CT) scan showed the presence of irregular masses in the adrenal glands on both sides, with the larger one being located on the left side. Its size was approximately 8.0 cm × 4.3 cm, its border was irregular, and the surrounding tissues were compressed. We did not observe any obvious enhancement in the arterial phase, nor any obvious swollen lymph nodes were noted later on (Figure 1).

FINAL DIAGNOSIS

The patient was diagnosed with non-GCB primary adrenal diffuse large B-cell lymphoma.

TREATMENT

We performed a left adrenalectomy under laparoscopic surgery. During the surgery, an irregular mass was observed in the left adrenal area. The mass was strongly adhered to the upper pole of the left kidney, and it pressurized the left kidney in forward and downward direction. No detectable lymph node enlargement was observed. The upper pole of the left kidney was damaged during the laparoscopic separation of the mass, so the wound surface was sutured continuously with 3-0 absorbable suture. After the separation of the tumor from the upper pole of the left kidney, due to excessive blood on the wound surface and compromised visibility, the tumor vessels were perturbed during the operation leading to the rupture of associated blood vessels. Due to the excessive blood loss, the laparoscopic surgery was reallocated to open abdominal surgery. The intraoperative blood loss was approximately 1300 mL, and blood transfusion was prescribed to overcome the loss.

OUTCOME AND FOLLOW-UP

Pathological diagnosis identified the presence of non-GCB diffuse large B-cell lymphoma in the left adrenal gland. Light microscopy observation revealed diffuse infiltration and growth of tumor cells in normal adrenal tissues. Tumor cells were composed of medium to large lymphoid cells. Most cells were round or oval in shape, double chromotropic or basophilic, containing less cytoplasm and larger nuclei (Figure 2A and B). Immunohistochemical analysis revealed tumor cells to be CD19 (+), CD20 (+), PAX-5 (+), CD79a (+), Ki67 (70%), CD43 (+), MUM1 (+), bcl-6 (+), CD45RO (focus +), CD3 (scattered +), cyclinD1 (-), CD10 (-), and CD30 (-) (Figure 2C and D). After the pathological diagnosis was confirmed, the patient was immediately notified telephonically. However, due to the patient's personal reasons, the return visit was delayed, and the patient returned to the hospital for further treatment a month later. Re-examination of the patient with abdominal enhanced CT 1 mo after the surgery revealed multiple soft tissue shadows in the retroperitoneum on both sides, uneven enhancement, and a left retroperitoneal soft tissue mass protruding into the kidney (Figure 3). Subsequently, the patient underwent four immunochemotherapy sessions at the hematology department of our hospital. The immunochemotherapy regimen was R-CHOP (rituxan 600 mg d1; cyclophosphamide 1.2 g d1; liposomal adriamycin 40 mg d1; vincristine 4 mg d1; and prednisone acetate 100 mg d1-d5). During fourth immunochemotherapy session, the patient developed a severe pulmonary infection, and sputum culture suggested infection by fungi and multidrug-resistant bacteria. The patient coughed sputum, and his body temperature fluctuated between 37 and 38 °C, and therefore, he was treated with sensitive antibiotics. Chest CT indicated diffuse patchy fuzzy shadows in both lungs, indicating inflammation. Hematologists did not rule out lung damage caused by immunochemotherapy drugs, and symptomatic treatment was continued. On January 22, 2019, the patient was required to receive 9 L/min oxygen by mask, with his oxygen saturation being 85%. Re-examination of the chest CT revealed further aggravation of the infection. Antibiotic treatment and oxygen therapy were strengthened further, with the oxygen saturation of the patient reaching 92%. Subsequent treatment continued according to patient's symptoms.

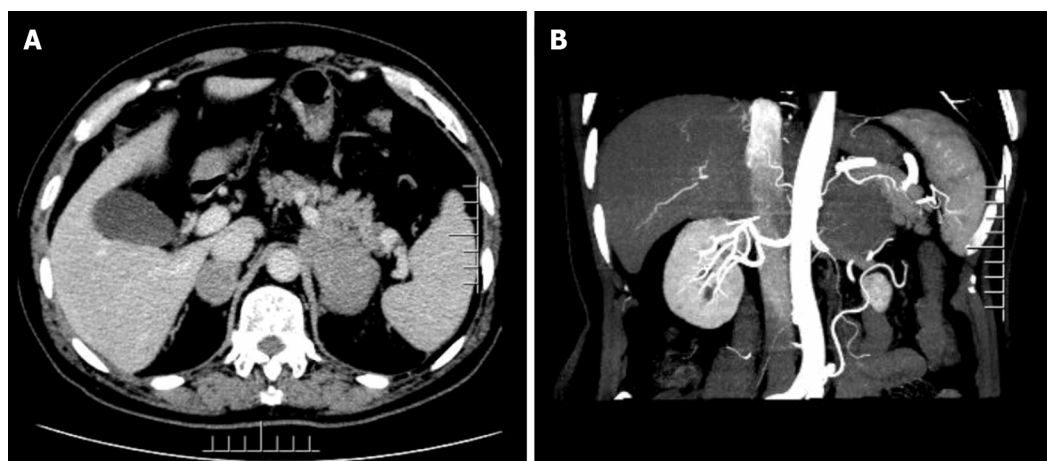


Figure 1 Preoperative abdominal enhanced computed tomography. A: Irregular masses were observed in the bilateral adrenal glands, with the larger masses being located on the left side, with a size of approximately 8.0 cm × 4.3 cm. No obvious enhancement was noted in the enhanced arterial phase, whereas uneven enhancement was observed in the portal phase; B: The left mass was surrounded the left renal artery, compressing the upper pole of the left kidney and part of the left renal vein. The boundary was irregular, while no obvious enlarged lymph nodes were found behind the peritoneum.

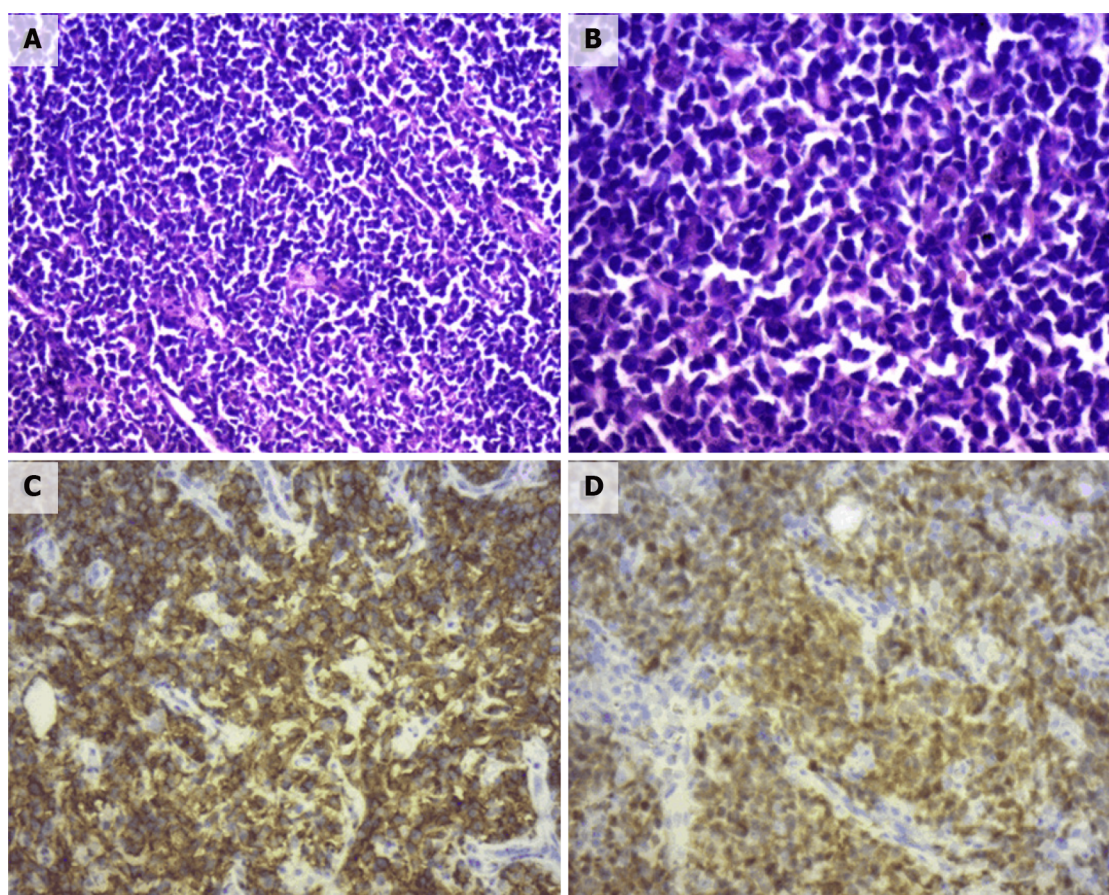


Figure 2 Pathological section. A: Hematoxylin & eosin (HE, × 100). Diffuse infiltration and growth of tumor cells; B: HE (× 200). Tumor cells were composed of medium to large lymphoid cells, most of which were round and oval, double chromotropic or basophilic, containing less cytoplasm and large nuclei; C: Immunohistochemical SP method of CD20 staining. Strong positively stained cell membrane in all tumor cells (the brownish yellow part of the picture); D: Immunohistochemical SP method of CD20 staining. Strong positively stained cell membrane in all tumor cells (the brownish yellow part of the picture).

However, at 03:37 on January 27, 2019, his oxygen saturation dropped to 60%. His oxygen saturation could not be monitored further, his heart rate decreased gradually, and his both pupils were dilated. The patient was declared dead and the cause of his death was determined as respiratory failure.

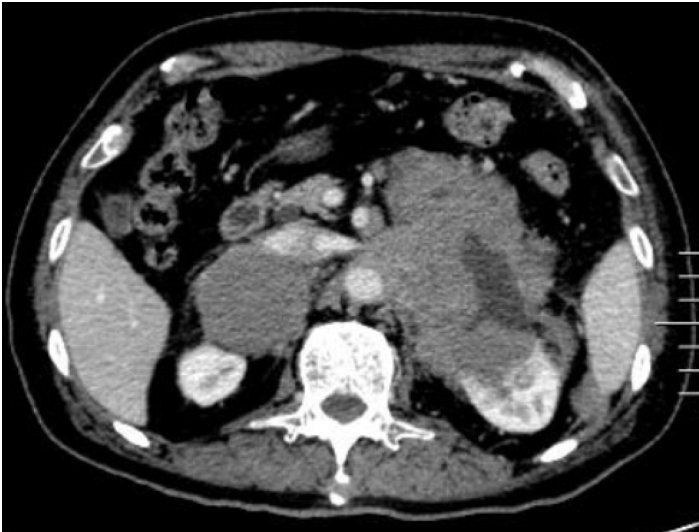


Figure 3 Re-examination of abdominal enhanced computed tomography 1 mo after surgery. Multiple soft tissue opacity in bilateral retroperitoneum, uneven enhancement, compression in the liver, spleen and pancreas, unclear boundary, unclear adrenal glands on the right side, and a soft tissue mass protruding into the kidney on the left retroperitoneum.

DISCUSSION

PADLBCL is a rare disease. To date, only more than 100 cases have been reported in the PubMed database[2]. PADLBCL mainly affects middle-aged and elderly men, with an average age of more than 60 years, and a male-to-female sex ratio of 2.93:1. In addition, the bilateral involvement of adrenal glands is common[3]. At present, the etiology and pathogenesis of PADLBCL remain unclear and have been suggested to be related to autoimmune deficiency, HIV, or EBV infections[4]. There are two viewpoints regarding the pathogenesis of PADLBCL. First, it may be related to the genetic predisposition of patients, such as mutations in the p53 and c-kit encoding genes as reported in adrenal lymphomas[5]. The second view suggests the initial occurrence of lymphoma outside the adrenal glands followed by their subsequent affliction, with chemokines and microRNAs driving this process, which can explain the bilateral involvement of the adrenal glands[6].

The clinical manifestations of PADLBCL lack specificity. Most patients experience pain around the waist and abdomen as the first symptom, accompanied by fatigue, fever, and night sweats[7]. When the bilateral adrenal glands are involved, most patients can have symptoms of adrenal insufficiency, manifested as skin pigmentation, hypotension, and fever[8]. In addition, PADLBCL involves the hypothalamic-pituitary axis, leading to adrenal insufficiency[9]. Therefore, for PADLBCL with adrenal insufficiency, systematic endocrine assessment should be performed. As our patient had PADLBCL with normal adrenal cortex function, his case relied on imaging examinations, providing lesser diagnostic information from the clinical symptoms and signs.

Imaging is an indispensable auxiliary diagnostic tool for PADLBCL, and the commonly used clinical examinations include CT and magnetic resonance imaging (MRI)[10]. In particular, in CT PADLBCL usually manifests as a low-density adrenal mass, which is moderately enhanced during enhanced scanning, revealing necrosis. In contrast, MRI examination shows a T1 phase low signal and T2 phase high signal. The T1 phase low signal can be distinguished from the T1 phase high signal caused by the hemorrhage of adrenal sarcoma. Besides, FDG-PET is more accurate in evaluating tumors and involved parts for determining extra-adrenal lesions[11,12]. In this case, only a CT examination was performed. However, it is deemed necessary to perform FDG-PET examinations in all PADLBCL cases. Moreover, histopathological examination are required for final diagnosis.

Pathological examination remains the gold standard for the diagnosis of PADLBCL. More specifically, observation under a light microscope reveals the destruction of the adrenal tissue structure, often accompanied by large lamellar necrosis and diffuse infiltration of large lymphocytes. In addition, immunohistochemical analysis of cells often reveals the expression of the CD19, CD20, CD22, CD45, CA79a, and PAX5 markers, and sometimes the expression of CD10 and CD5 proteins. In particular, CD5+ lymphomas are more malignant and associated with a poor prognosis[13]. Immuno-

histochemistry can also be used to classify the molecular types of PADLBCL. For this purpose, Hans algorithm is most extensively used in routine practice, and it consists of three markers (CD10, Bcl6, MUM1). Based on the combination of these three markers, Hans algorithm could divide DLBCL into two groups (GCB and non-GCB subtype) [14]. Non-GCB type PADLBCL is clinically common and often related to poor prognosis [15]. In recent years, studies have reported that non-GCB patients are often characterized by a higher expression of the proliferation index (Ki-67), with standard R-CHOP immunochemotherapy regimen being less effective in such patients [16]. However, other studies have reported that R-CHOP immunochemotherapy may achieve complete remission of PADLBCL [8].

Combining the medical history of the patient, imaging, pathological morphology, and immunophenotype facilitates the correct diagnosis of PADLBCL; however, attention should be paid to exclude the following possibilities: (1) Secondary lymphoma, that is, that no other lymphomas existed before diagnosis; and (2) Other adrenal tumors including adrenocortical carcinoma, pheochromocytoma, malignant melanoma, and neuroendocrine tumors. Early diagnosis of PADLBCL is generally difficult until the tumor has grown substantially and compresses the peripheral nerves or organs, causing corresponding symptoms or damage to the adrenal tissue and adrenal insufficiency.

Currently, there is no unified treatment regimen for PADLBCL. Most of the therapeutic strategies are developed based on the summary and comparison of the treatment experiences of lymphoma. PADLBCL is usually treated as a systemic disease, and early diagnosis and treatment can significantly prolong the patient's survival. Since lymphoma is a systemic disease, the invasiveness of PADLBCL is generally extends beyond the visual limit, and it is difficult to achieve complete resection. Therefore, surgery is mainly used to diagnose the disease, and further immunochemotherapy is recommended post-surgery. R-CHOP immunochemotherapy is generally recommended as the first choice, and rituximab combined with second-line chemotherapy, such as bendamustine, DAEPOCH, DHAP, GDP, and GEMOX, is recommended for patients with relapsed/refractory PADLBCL. Patients with relapsed/refractory PADLBCL are known to exhibit a generally rapid progress of the disease and cannot tolerate chemotherapy drugs [17].

As mentioned, PADLBCL has a poor prognosis, Kim *et al* [18] reported 31 cases of primary adrenal DLBCL with overall 2-year and progression-free survival rates of 68.3% and 51.1%, respectively. A few reports have reported that patients with PADLBCL receiving R-CHOP immunochemotherapy have a better prognosis and can achieve long-term remission or even complete remission [8,19]. It has also been reported that the treatment of surgery, chemotherapy, and autologous peripheral blood stem cell transplantation could retain a patient in remission for 2 years [20]. Many factors, such as the IPI score, non-GCB type, pathological type, treatment of the patient abandonment, and non-standard treatment can affect the prognosis of patients. In addition, adrenal lymphoma is one of the major risk factors for the recurrence of central nervous system (CNS) lymphoma [21]. In the study by Kim *et al* [18], 13% of patients with adrenal lymphoma had CNS lymphoma recurrence. Therefore, systemic methotrexate or intrathecal injection of methotrexate may be administered during the treatment to prevent the involvement and recurrence of the central nervous system.

In this case, preoperative examination indicated normal adrenal cortex function, which impeded the preliminary diagnosis of PADLBCL by the physician-in-charge. Postoperative pathology indicated non-GCB PADLBCL, and the patient received R-CHOP immunochemotherapy; however, the effect of immunochemotherapy was not beneficial. Possibly, the age of the patient and the impact of the disease and chemotherapy resulted in impaired immune response, leading to the patient acquiring severe lung infection and dying of respiratory failure.

CONCLUSION

The incidence of PADLBCL is low, and clinical symptoms are not typical. It is necessary to improve CT and FDG-PET examinations used for the evaluation of tumor staging, which would be helpful in standardizing treatment. Conventional immunochemotherapy includes the R-CHOP regimen, and surgery is mainly used to diagnose the disease, while the prevention of central nervous system lymphoma also needs to be considered. Thus, the ideal treatment plan needs to be strategized based on further research.

REFERENCES

- 1 Ayyappan S, Maddocks K. Novel and emerging therapies for B cell lymphoma. *J Hematol Oncol* 2019; **12**: 82 [PMID: 31345247 DOI: 10.1186/s13045-019-0752-3]
- 2 Khurana A, Kaur P, Chauhan AK, Kataria SP, Bansal N. Primary Non Hodgkin's Lymphoma of Left Adrenal Gland - A Rare Presentation. *J Clin Diagn Res* 2015; **9**: XD01-XD03 [PMID: 26023630 DOI: 10.7860/JCDR/2015/8079.5745]
- 3 Babinska A, Peksa R, Sworczak K. Primary malignant lymphoma combined with clinically "silent" pheochromocytoma in the same adrenal gland. *World J Surg Oncol* 2015; **13**: 289 [PMID: 26419235 DOI: 10.1186/s12957-015-0711-6]
- 4 Erçoluk V, Kara O, Güneli M, Usul Afşar C, Bozkurt Duman B, Açıkalin A, Ergin M, Erdoğan S. Bilateral primary adrenal non-hodgkin lymphoma. *Turk J Haematol* 2014; **31**: 205-206 [PMID: 25035686 DOI: 10.4274/tjh.2013.0195]
- 5 Nakatsuka S, Hongyo T, Syaifudin M, Nomura T, Shingu N, Aozasa K. Mutations of p53, c-kit, K-ras, and beta-catenin gene in non-Hodgkin's lymphoma of adrenal gland. *Jpn J Cancer Res* 2002; **93**: 267-274 [PMID: 11927008 DOI: 10.1111/j.1349-7006.2002.tb02168.x]
- 6 Kadoch C, Treseler P, Rubenstein JL. Molecular pathogenesis of primary central nervous system lymphoma. *Neurosurg Focus* 2006; **21**: E1 [PMID: 17134111 DOI: 10.3171/foc.2006.21.5.2]
- 7 Zhou J, Zhao Y, Gou Z. High 18F-fluorodeoxyglucose uptake in primary bilateral adrenal diffuse large B-cell lymphomas with nongerminal center B-cell phenotype: A case report. *Medicine (Baltimore)* 2018; **97**: e0480 [PMID: 29703006 DOI: 10.1097/MD.00000000000010480]
- 8 Kim KM, Yoon DH, Lee SG, Lim SN, Sug LJ, Huh J, Suh C. A case of primary adrenal diffuse large B-cell lymphoma achieving complete remission with rituximab-CHOP chemotherapy. *J Korean Med Sci* 2009; **24**: 525-528 [PMID: 19543522 DOI: 10.3346/jkms.2009.24.3.525]
- 9 An P, Chen K, Yang GQ, Dou JT, Chen YL, Jin XY, Wang XL, Mu YM, Wang QS. Diffuse large B cell lymphoma with bilateral adrenal and hypothalamic involvement: A case report and literature review. *World J Clin Cases* 2019; **7**: 4075-4083 [PMID: 31832411 DOI: 10.12998/wjcc.v7.i23.4075]
- 10 Campo E, Swerdlow SH, Harris NL, Pileri S, Stein H, Jaffe ES. The 2008 WHO classification of lymphoid neoplasms and beyond: evolving concepts and practical applications. *Blood* 2011; **117**: 5019-5032 [PMID: 21300984 DOI: 10.1182/blood-2011-01-293050]
- 11 Radhakrishnan RK, Mittal BR, Reddy Gorla AK, Malhotra P, Bal A, Varma S. Unilateral Primary Adrenal Lymphoma: Uncommon Presentation of a Rare Disease Evaluated Using ¹⁸F-fluorodeoxyglucose Positron Emission Tomography/Computed Tomography. *World J Nucl Med* 2018; **17**: 46-48 [PMID: 29398965 DOI: 10.4103/1450-1147.222288]
- 12 Ram N, Rashid O, Farooq S, Ulhaq I, Islam N. Primary adrenal non-Hodgkin lymphoma: a case report and review of the literature. *J Med Case Rep* 2017; **11**: 108 [PMID: 28410600 DOI: 10.1186/s13256-017-1271-x]
- 13 Libè R, Giavoli C, Barbetta L, Dall'Asta C, Passini E, Buffa R, Beck-Peccoz P, Ambrosi B. A primary adrenal non-Hodgkin's lymphoma presenting as an incidental adrenal mass. *Exp Clin Endocrinol Diabetes* 2006; **114**: 140-144 [PMID: 16636981 DOI: 10.1055/s-2005-865913]
- 14 Hans CP, Weisenburger DD, Greiner TC, Gascoyne RD, Delabie J, Ott G, Müller-Hermelink HK, Campo E, Braziel RM, Jaffe ES, Pan Z, Farinha P, Smith LM, Falini B, Banham AH, Rosenwald A, Staudt LM, Connors JM, Armitage JO, Chan WC. Confirmation of the molecular classification of diffuse large B-cell lymphoma by immunohistochemistry using a tissue microarray. *Blood* 2004; **103**: 275-282 [PMID: 14504078 DOI: 10.1182/blood-2003-05-1545]
- 15 Lu TX, Miao Y, Wu JZ, Gong QX, Liang JH, Wang Z, Wang L, Fan L, Hua D, Chen YY, Xu W, Zhang ZH, Li JY. The distinct clinical features and prognosis of the CD10⁺MUM1⁺ and CD10⁻Bcl6⁺MUM1⁻ diffuse large B-cell lymphoma. *Sci Rep* 2016; **6**: 20465 [PMID: 26857366 DOI: 10.1038/srep20465]
- 16 Koh YW, Hwang HS, Park CS, Yoon DH, Suh C, Huh J. Prognostic effect of Ki-67 expression in rituximab, cyclophosphamide, doxorubicin, vincristine and prednisone-treated diffuse large B-cell lymphoma is limited to non-germinal center B-cell-like subtype in late-elderly patients. *Leuk Lymphoma* 2015; **56**: 2630-2636 [PMID: 25573205 DOI: 10.3109/10428194.2015.1004169]
- 17 Aziz SA, Laway BA, Rangreze I, Lone MI, Ahmad SN. Primary adrenal lymphoma: Differential involvement with varying adrenal function. *Indian J Endocrinol Metab* 2011; **15**: 220-223 [PMID: 21897903 DOI: 10.4103/2230-8210.83414]
- 18 Kim YR, Kim JS, Min YH, Hyunyon D, Shin HJ, Mun YC, Park Y, Do YR, Jeong SH, Park JS, Oh SY, Lee S, Park EK, Jang JS, Lee WS, Lee HW, Eom H, Ahn JS, Jeong JH, Baek SK, Kim SJ, Kim WS, Suh C. Prognostic factors in primary diffuse large B-cell lymphoma of adrenal gland treated with rituximab-CHOP chemotherapy from the Consortium for Improving Survival of Lymphoma (CISL). *J Hematol Oncol* 2012; **5**: 49 [PMID: 22889180 DOI: 10.1186/1756-8722-5-49]
- 19 Shirao S, Kuroda H, Kida M, Watanabe H, Matsunaga T, Niitsu Y, Konuma Y, Hirayama Y, Kohda K. [Effective combined modality therapy for a patient with primary adrenal lymphoma]. *Rinsho Ketsueki* 2006; **47**: 204-209 [PMID: 16629485]
- 20 Coiffier B, Lepage E, Briere J, Herbrecht R, Tilly H, Bouabdallah R, Morel P, Van Den Neste E, Salles G, Gaulard P, Reyes F, Lederlin P, Gisselbrecht C. CHOP chemotherapy plus rituximab compared with CHOP alone in elderly patients with diffuse large-B-cell lymphoma. *N Engl J Med* 2002; **346**: 235-242 [PMID: 11807147 DOI: 10.1056/NEJMoa011795]

- 21 Grigg AP, Connors JM. Primary adrenal lymphoma. *Clin Lymphoma* 2003; **4**: 154-160 [PMID: 14715097 DOI: 10.3816/clm.2003.n.024]



Published by **Baishideng Publishing Group Inc**
7041 Koll Center Parkway, Suite 160, Pleasanton, CA 94566, USA

Telephone: +1-925-3991568

E-mail: bpgoffice@wjgnet.com

Help Desk: <https://www.f6publishing.com/helpdesk>

<https://www.wjgnet.com>

