

# World Journal of *Clinical Cases*

*World J Clin Cases* 2022 August 26; 10(24): 8432-8807



## Contents

Thrice Monthly Volume 10 Number 24 August 26, 2022

### EDITORIAL

- 8432** Evolution of *World Journal of Clinical Cases* over the past 5 years  
*Muthu S*

### OPINION REVIEW

- 8436** NF- $\kappa$ B: A novel therapeutic pathway for gastroesophageal reflux disease?  
*Zhang ML, Ran LQ, Wu MJ, Jia QC, Qin ZM, Peng YG*

### MINIREVIEWS

- 8443** Obligate aerobic, gram-positive, weak acid-fast, nonmotile bacilli, *Tsukamurella tyrosinosolvens*: Minireview of a rare opportunistic pathogen  
*Usuda D, Tanaka R, Suzuki M, Shimozawa S, Takano H, Hotchi Y, Tokunaga S, Osugi I, Katou R, Ito S, Mishima K, Kondo A, Mizuno K, Takami H, Komatsu T, Oba J, Nomura T, Sugita M*
- 8450** Diffusion tensor imaging pipeline measures of cerebral white matter integrity: An overview of recent advances and prospects  
*Safri AA, Nassir CMNCM, Iman IN, Mohd Taib NH, Achuthan A, Mustapha M*
- 8463** Graft choices for anterolateral ligament knee reconstruction surgery: Current concepts  
*Chalidis B, Pitsilos C, Kitridis D, Givissis P*
- 8474** Overview of the anterolateral complex of the knee  
*Garcia-Mansilla I, Zicaro JP, Martinez EF, Astoul J, Yacuzzi C, Costa-Paz M*
- 8482** Complication of lengthening and the role of post-operative care, physical and psychological rehabilitation among fibula hemimelia  
*Salimi M, Sarallah R, Javanshir S, Mirghaderi SP, Salimi A, Khanzadeh S*

### ORIGINAL ARTICLE

#### Clinical and Translational Research

- 8490** Pyroptosis-related genes play a significant role in the prognosis of gastric cancer  
*Guan SH, Wang XY, Shang P, Du QC, Li MZ, Xing X, Yan B*

#### Retrospective Study

- 8506** Effects of propofol combined with lidocaine on hemodynamics, serum adrenocorticotrophic hormone, interleukin-6, and cortisol in children  
*Shi S, Gan L, Jin CN, Liu RF*
- 8514** Correlation analysis of national elite Chinese male table tennis players' shoulder proprioception and muscle strength  
*Shang XD, Zhang EM, Chen ZL, Zhang L, Qian JH*

- 8525** Clinical value of contrast-enhanced ultrasound in early diagnosis of small hepatocellular carcinoma ( $\leq 2$  cm)

*Mei Q, Yu M, Chen Q*

- 8535** Identification of predictive factors for post-transarterial chemoembolization liver failure in hepatocellular carcinoma patients: A retrospective study

*Yuan M, Chen TY, Chen XR, Lu YF, Shi J, Zhang WS, Ye C, Tang BZ, Yang ZG*

- 8547** Clinical significance of half-hepatic blood flow occlusion technology in patients with hepatocellular carcinoma with cirrhosis

*Liu D, Fang JM, Chen XQ*

- 8556** Which octogenarian patients are at higher risk after cholecystectomy for symptomatic gallstone disease? A single center cohort study

*D'Acapito F, Solaini L, Di Pietrantonio D, Tauceri F, Mirarchi MT, Antelmi E, Flamini F, Amato A, Framarini M, Ercolani G*

### Clinical Trials Study

- 8568** Computed tomography combined with gastroscopy for assessment of pancreatic segmental portal hypertension

*Wang YL, Zhang HW, Lin F*

### Observational Study

- 8578** Psychological needs of parents of children with complicated congenital heart disease after admitting to pediatric intensive care unit: A questionnaire study

*Zhu JH, Jin CD, Tang XM*

### Prospective Study

- 8587** Quantitative differentiation of malignant and benign thyroid nodules with multi-parameter diffusion-weighted imaging

*Zhu X, Wang J, Wang YC, Zhu ZF, Tang J, Wen XW, Fang Y, Han J*

### Randomized Controlled Trial

- 8599** Application of unified protocol as a transdiagnostic treatment for emotional disorders during COVID-19: An internet-delivered randomized controlled trial

*Yan K, Yusufi MH, Nazari N*

- 8615** High-flow nasal cannula oxygen therapy during anesthesia recovery for older orthopedic surgery patients: A prospective randomized controlled trial

*Li XN, Zhou CC, Lin ZQ, Jia B, Li XY, Zhao GF, Ye F*

### SYSTEMATIC REVIEWS

- 8625** Assessment tools for differential diagnosis of neglect: Focusing on egocentric neglect and allocentric neglect

*Lee SH, Lim BC, Jeong CY, Kim JH, Jang WH*

## CASE REPORT

- 8634** Exome analysis for Cronkhite-Canada syndrome: A case report  
*Li ZD, Rong L, He YJ, Ji YZ, Li X, Song FZ, Li XA*
- 8641** Discrepancy between non-invasive prenatal testing result and fetal karyotype caused by rare confined placental mosaicism: A case report  
*Li Z, Lai GR*
- 8648** Paroxysmal speech disorder as the initial symptom in a young adult with anti-N-methyl-D-aspartate receptor encephalitis: A case report  
*Hu CC, Pan XL, Zhang MX, Chen HF*
- 8656** Anesthetics management of a renal angiomyolipoma using pulse pressure variation and non-invasive cardiac output monitoring: A case report  
*Jeon WJ, Shin WJ, Yoon YJ, Park CW, Shim JH, Cho SY*
- 8662** Traumatic giant cell tumor of rib: A case report  
*Chen YS, Kao HW, Huang HY, Huang TW*
- 8667** Analysis of two naval pilots' ejection injuries: Two case reports  
*Zeng J, Liu XP, Yi JC, Lu X, Liu DD, Jiang YQ, Liu YB, Tian JQ*
- 8673** Beware of the DeBakey type I aortic dissection hidden by ischemic stroke: Two case reports  
*Chen SQ, Luo WL, Liu W, Wang LZ*
- 8679** Unilateral lichen planus with Blaschko line distribution: A case report  
*Dong S, Zhu WJ, Xu M, Zhao XQ, Mou Y*
- 8686** Clinical features and progress of ischemic gastritis with high fatalities: Seven case reports  
*Shionoya K, Sasaki A, Moriya H, Kimura K, Nishino T, Kubota J, Sumida C, Tasaki J, Ichita C, Makazu M, Masuda S, Koizumi K, Kawachi J, Tsukiyama T, Kako M*
- 8695** Retinoblastoma in an older child with secondary glaucoma as the first clinical presenting symptom: A case report  
*Zhang Y, Tang L*
- 8703** Recurrent herpes zoster in a rheumatoid arthritis patient treated with tofacitinib: A case report and review of the literature  
*Lin QX, Meng HJ, Pang YY, Qu Y*
- 8709** Intra-abdominal ectopic bronchogenic cyst with a mucinous neoplasm harboring a *GNAS* mutation: A case report  
*Murakami T, Shimizu H, Yamazaki K, Nojima H, Usui A, Kosugi C, Shuto K, Obi S, Sato T, Yamazaki M, Koda K*
- 8718** Effects of intravascular photobiomodulation on motor deficits and brain perfusion images in intractable myasthenia gravis: A case report  
*Lan CH, Wu YC, Chiang CC, Chang ST*

- 8728** Spontaneous acute epidural hematoma secondary to skull and dural metastasis of hepatocellular carcinoma: A case report  
*Lv GZ, Li GC, Tang WT, Zhou D, Yang Y*
- 8735** Malignant melanotic nerve sheath tumors in the spinal canal of psammomatous and non-psammomatous type: Two case reports  
*Yeom JA, Song YS, Lee IS, Han IH, Choi KU*
- 8742** When should endovascular gastrointestinal anastomosis transection Glissonean pedicle not be used in hepatectomy? A case report  
*Zhao J, Dang YL*
- 8749** VARS2 gene mutation leading to overall developmental delay in a child with epilepsy: A case report  
*Wu XH, Lin SZ, Zhou YQ, Wang WQ, Li JY, Chen QD*
- 8755** Junctional bradycardia in a patient with COVID-19: A case report  
*Aedh AI*
- 8761** Application of 3 dimension-printed injection-molded polyether ether ketone lunate prosthesis in the treatment of stage III Kienböck's disease: A case report  
*Yuan CS, Tang Y, Xie HQ, Liang TT, Li HT, Tang KL*
- 8768** High scored thyroid storm after stomach cancer perforation: A case report  
*Baik SM, Pae Y, Lee JM*
- 8775** Cholecystitis-an uncommon complication following thoracic duct embolization for chylothorax: A case report  
*Dung LV, Hien MM, Tra My TT, Luu DT, Linh LT, Duc NM*
- 8782** Endometrial squamous cell carcinoma originating from the cervix: A case report  
*Shu XY, Dai Z, Zhang S, Yang HX, Bi H*
- 8788** Type 2 autoimmune pancreatitis associated with severe ulcerative colitis: Three case reports  
*Ghali M, Bensted K, Williams DB, Ghaly S*
- 8797** Diffuse uterine leiomyomatosis: A case report and review of literature  
*Ren HM, Wang QZ, Wang JN, Hong GJ, Zhou S, Zhu JY, Li SJ*

**LETTER TO THE EDITOR**

- 8805** Comment on "Posterior reversible encephalopathy syndrome in a patient with metastatic breast cancer: A case report"  
*Kunić S, Ibrahimagić OČ, Kojić B, Džananović D*

**ABOUT COVER**

Editorial Board Member of *World Journal of Clinical Cases*, Ahmed Mohamed Ahmed Al-Emam, PhD, Associate Professor, Department of Pathology, King Khalid University, Abha 62521, Saudi Arabia. amalemam@kku.edu.sa

**AIMS AND SCOPE**

The primary aim of *World Journal of Clinical Cases* (WJCC, *World J Clin Cases*) is to provide scholars and readers from various fields of clinical medicine with a platform to publish high-quality clinical research articles and communicate their research findings online.

WJCC mainly publishes articles reporting research results and findings obtained in the field of clinical medicine and covering a wide range of topics, including case control studies, retrospective cohort studies, retrospective studies, clinical trials studies, observational studies, prospective studies, randomized controlled trials, randomized clinical trials, systematic reviews, meta-analysis, and case reports.

**INDEXING/ABSTRACTING**

The WJCC is now abstracted and indexed in Science Citation Index Expanded (SCIE, also known as SciSearch®), Journal Citation Reports/Science Edition, Current Contents®/Clinical Medicine, PubMed, PubMed Central, Scopus, Reference Citation Analysis, China National Knowledge Infrastructure, China Science and Technology Journal Database, and Superstar Journals Database. The 2022 Edition of Journal Citation Reports® cites the 2021 impact factor (IF) for WJCC as 1.534; IF without journal self cites: 1.491; 5-year IF: 1.599; Journal Citation Indicator: 0.28; Ranking: 135 among 172 journals in medicine, general and internal; and Quartile category: Q4. The WJCC's CiteScore for 2021 is 1.2 and Scopus CiteScore rank 2021: General Medicine is 443/826.

**RESPONSIBLE EDITORS FOR THIS ISSUE**

Production Editor: *Ying-Yi Yuan*; Production Department Director: *Xu Guo*; Editorial Office Director: *Jin-Lei Wang*.

**NAME OF JOURNAL**

*World Journal of Clinical Cases*

**ISSN**

ISSN 2307-8960 (online)

**LAUNCH DATE**

April 16, 2013

**FREQUENCY**

Thrice Monthly

**EDITORS-IN-CHIEF**

Bao-Gan Peng, Jerzy Tadeusz Chudek, George Kontogeorgos, Maurizio Serati, Ja Hyeon Ku

**EDITORIAL BOARD MEMBERS**

<https://www.wjgnet.com/2307-8960/editorialboard.htm>

**PUBLICATION DATE**

August 26, 2022

**COPYRIGHT**

© 2022 Baishideng Publishing Group Inc

**INSTRUCTIONS TO AUTHORS**

<https://www.wjgnet.com/bpg/gerinfo/204>

**GUIDELINES FOR ETHICS DOCUMENTS**

<https://www.wjgnet.com/bpg/GerInfo/287>

**GUIDELINES FOR NON-NATIVE SPEAKERS OF ENGLISH**

<https://www.wjgnet.com/bpg/gerinfo/240>

**PUBLICATION ETHICS**

<https://www.wjgnet.com/bpg/GerInfo/288>

**PUBLICATION MISCONDUCT**

<https://www.wjgnet.com/bpg/gerinfo/208>

**ARTICLE PROCESSING CHARGE**

<https://www.wjgnet.com/bpg/gerinfo/242>

**STEPS FOR SUBMITTING MANUSCRIPTS**

<https://www.wjgnet.com/bpg/GerInfo/239>

**ONLINE SUBMISSION**

<https://www.f6publishing.com>



## Cholecystitis-an uncommon complication following thoracic duct embolization for chylothorax: A case report

Le Viet Dung, Ma Mai Hien, Thieu-Thi Tra My, Doan Tien Luu, Le Tuan Linh, Nguyen Minh Duc

**Specialty type:** Gastroenterology and hepatology

**Provenance and peer review:** Unsolicited article; Externally peer reviewed.

**Peer-review model:** Single blind

**Peer-review report's scientific quality classification**

Grade A (Excellent): A  
Grade B (Very good): B  
Grade C (Good): 0  
Grade D (Fair): D  
Grade E (Poor): 0

**P-Reviewer:** Mechineni A; Moshref L, Saudi Arabia; Yasukawa K, Japan

**Received:** April 5, 2022

**Peer-review started:** April 5, 2022

**First decision:** June 16, 2022

**Revised:** June 16, 2022

**Accepted:** July 22, 2022

**Article in press:** July 22, 2022

**Published online:** August 26, 2022



**Le Viet Dung, Ma Mai Hien, Thieu-Thi Tra My,** Diagnostic Imaging and Interventional Radiology Center, Hanoi Medical University Hospital, Hanoi 100000, Vietnam

**Doan Tien Luu, Le Tuan Linh,** Department of Radiology, Hanoi Medical University, Hanoi 100000, Vietnam

**Nguyen Minh Duc,** Department of Radiology, Pham Ngoc Thach University of Medicine, Ho Chi Minh 700000, Vietnam

**Corresponding author:** Nguyen Minh Duc, MD, Department of Radiology, Faculty of Medicine Pham Ngoc Thach University of Medicine, 2 Duong Quang Trung, Ward 12, District 10, HCMC, Vietnam. [bsnguyenminhdudc@pnt.edu.vn](mailto:bsnguyenminhdudc@pnt.edu.vn)

### Abstract

#### BACKGROUND

Chylothorax is an uncommon condition in which chyle leaks into the pleural cavity, and biliary peritonitis is a rare complication of thoracic duct embolization in clinical practice.

#### CASE SUMMARY

We describe the case of a 50-year-old woman who presented with chylothorax and underwent thoracic duct embolization using a coil and a mixture of histoacryl glue and lipiodol. The patient developed upper abdominal pain and fever after the intervention. She was diagnosed with biliary peritonitis and treated with cholecystectomy at Hanoi Medical University Hospital.

#### CONCLUSION

Although thoracic duct embolization is considered a safe and minimally invasive procedure, it is not without risk. Following thoracic duct embolization, severe or persistent abdominal pain should be explored utilizing imaging data and laboratory results to determine problems as soon as possible.

**Key Words:** Lymphangiography; Thoracic duct embolization; Cholecystitis; Chyle leakage; Biliary peritonitis; Case report

©The Author(s) 2022. Published by Baishideng Publishing Group Inc. All rights reserved.

**Core Tip:** Chylothorax is a condition in which chyle leaks into the pleural cavity. Trauma, spontaneous (non-traumatic), and idiopathic etiologies are all potential causes of chylothorax. In clinical practice, biliary peritonitis is an uncommon consequence of thoracic duct embolization. Despite its reputation as a safe and minimally intrusive technique, thoracic duct embolization is not without hazard. Severe or chronic abdominal discomfort should be investigated as soon as possible after thoracic duct embolization, using imaging data and laboratory results to identify issues.

**Citation:** Dung LV, Hien MM, Tra My TT, Luu DT, Linh LT, Duc NM. Cholecystitis-an uncommon complication following thoracic duct embolization for chylothorax: A case report. *World J Clin Cases* 2022; 10(24): 8775-8781

**URL:** <https://www.wjgnet.com/2307-8960/full/v10/i24/8775.htm>

**DOI:** <https://dx.doi.org/10.12998/wjcc.v10.i24.8775>

## INTRODUCTION

Chylothorax is a rare disease characterized by chyle leakage into the pleural cavity. The etiology of chylothorax can be traumatic, idiopathic, and non-traumatic including malignancies, primary lymphatic disorders or congenital malformations[1]. Conservative management consisting of dietary control and drainage is typically the first-line treatment. Interventional radiology and surgery are considered if conservative management fails[1]. Thoracic duct embolization is a new, safe, and effective method for chylothorax treatment, it is associated with minimal complications[2,3], and these attributes have contributed to the recent increase in the use of thoracic duct embolization as a first-line treatment for chylothorax[4]. In this case report, we describe the occurrence of biliary peritonitis following thoracic duct embolization for the treatment of chylothorax due to penetration of a percutaneous interventional needle into the gallbladder wall.

## CASE PRESENTATION

### Chief complaints

A 50-year-old woman presented at Hanoi Medical University Hospital. with dyspnea and chest pain.

### History of present illness

The symptoms started 1 mo prior to presentation, with chest discomfort.

### History of past illness

Medical records were normal.

### Personal and family history

There was no personal and family history of other diseases.

### Physical examination

Physical examination was not special. On auscultation, vesicular breath sound was diminished with decreased vocal resonance especially at the middle and lower lobes of the right lung.

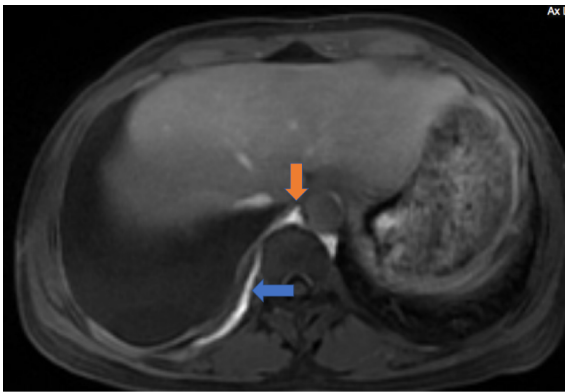
### Laboratory examinations

Blood tests at presentation were in the normal range. Her pleural fluid analysis showed: Triglyceride 20.3 mmol/L and cholesterol 2.2 nmol/L.

### Imaging examinations

Contrast-enhanced magnetic resonance (MR) lymphangiography was performed to obtain coronal and axial T1-weighted and T1-weighted fat-saturated post-gadolinium images, which showed a large right pleural effusion and contrast agent leakage from the right-sided branch of the lower-third of the thoracic duct into the right pleural space (Figure 1) and a double thoracic duct variant.





DOI: 10.12998/wjcc.v10.i24.8775 Copyright ©The Author(s) 2022.

**Figure 1 Contrast-enhanced magnetic resonance (MR) lymphangiography before treatment.** Axial T1-weighted fat-saturated post-gadolinium image revealed the leakage of contrast agent (blue arrow) from a right-sided branch of the thoracic duct (orange arrow) into the right pleural cavity.

## INITIAL DIAGNOSIS

### *Further diagnostic work-up*

A multidisciplinary consultation (involving respirologists, interventional radiologists, nutritionist) was performed. Three days after presentation, the patient underwent an intranodal lymphangiogram using digital subtraction angiography (DSA), which revealed dilated lymphatic vessels and lymphatic malformations in the lower-third of the thoracic duct, resulting in the leakage of contrast agent into the right pleural space (Figure 2). The patient also had a double lower thoracic duct variant. As the leakage was clear on MR lymphangiography and the patient had a large right pleural effusion (Figure 1), we decided to treat her with lymphatic embolization, combined with lipid fasting. Under DSA guidance, the cisterna chyli was accessed percutaneously through the anterior abdominal wall with a 22-gauge Chiba needle. A right transabdominal approach was performed to avoid the aorta. The contrast was injected to confirm appropriate placement in the cisterna chyli. A wire was then advanced through the needle and placed within the thoracic duct. The thoracic duct below the leak was embolized under DSA, using a coil and a mixture of histoacryl glue and lipiodol.

Several hours after this intervention, the patient reported moderate-severe epigastric and right quadrant pain. Contrast-enhanced computed tomography (CT) was immediately performed, which showed wall thickening and subserosal edema in the gallbladder (Figure 3), with peripancreatic fluid extending into the pararenal spaces and bilateral paracolic gutters. The pancreas was homogeneously enhanced, with no signs of necrosis or pancreatic duct dilatation. A small, high-density nodule was observed in the gallbladder wall. The initial diagnosis was acute pancreatitis after lymphatic intervention; thus, she underwent conservative treatment instead of surgery. The respiratory symptoms were resolved by the intervention, but the patient experienced increasing abdominal pain and mild fever. Blood tests revealed an infectious condition: white blood cell count (WBC), 13.5 G/L; neutrophils, 88.7%; and C-reactive protein (CRP), 3.49 mg/dL. Pancreatic enzymes were within the normal range: amylase, 84 U/L; lipase, 20 U/L; and total/direct bilirubin, 9.6/5.7  $\mu$ mol/L. A second contrast-enhanced abdominal CT performed 3 days later revealed further gallbladder wall thickening (approximately 20 mm) and subserosal edema (Figure 4), with no signs of stones, pseudoaneurysm, or contrast agent leakage. The small, high-density nodule on the gallbladder wall and approximately 30 mm of ascites were observed.

## FINAL DIAGNOSIS

The final diagnosis was biliary peritonitis following thoracic duct embolization for chylothorax treatment. The critical finding was the high-density nodule observed on the gallbladder wall, which corresponded to lipiodol deposition following penetration of the percutaneous interventional needle into the gallbladder wall.

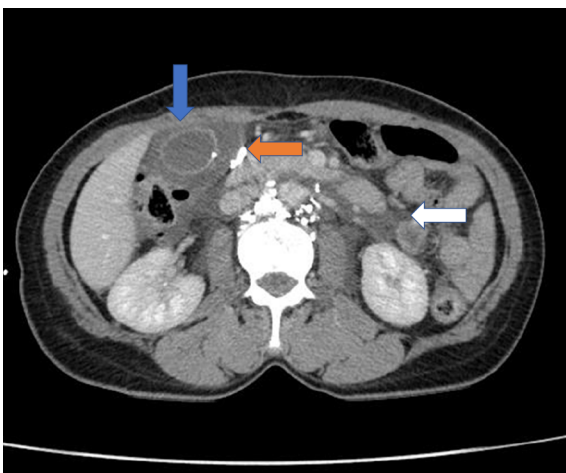
## TREATMENT

The patient underwent emergency laparoscopic cholecystectomy. The surgeon described 300 mL of bile fluid in the abdominal cavity. The gallbladder was inflamed and covered with greater omentum. The surgeon diagnosed biliary peritonitis in this case. Two holes (approximately 1 mm) were identified in



DOI: 10.12998/wjcc.v10.i24.8775 Copyright ©The Author(s) 2022.

**Figure 2 Intranodal lymphangiogram using digital subtraction angiography prior to treatment.** Frontal image of digital subtraction angiography revealed dilated lymphatic vessels and a lymphatic malformation in the lower thoracic duct (orange arrow), resulting in the leakage of contrast agent into the right pleural space.



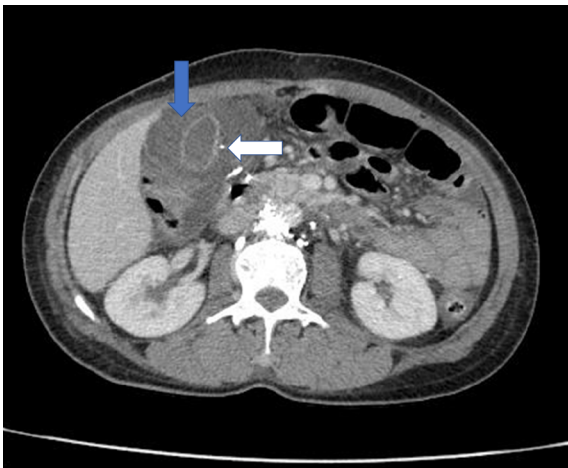
DOI: 10.12998/wjcc.v10.i24.8775 Copyright ©The Author(s) 2022.

**Figure 3 Contrast-enhanced computed tomography after intervention.** Axial image showed gallbladder wall thickening of approximately 14 mm and subserosal edema (blue arrow). Peripancreatic fluid is observed extending into the pararenal spaces (white arrow) and bilateral paracolic gutters. A small, high-density nodule is observed in the gallbladder wall (orange arrow).

the base and funnel of the gallbladder (Figure 5), suggesting penetration of the gallbladder wall by the percutaneous interventional needle.

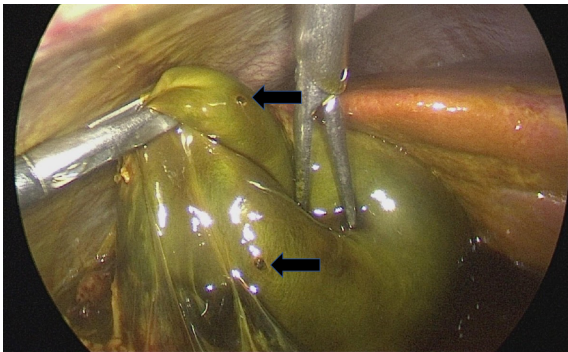
## OUTCOME AND FOLLOW-UP

After surgery, the patient improved clinically, and the chylothorax output gradually resolved after several weeks. Inflammatory markers remained slightly elevated, and bilirubin returned to the normal range within 5 days: WBC, 9.3 G/L; neutrophils, 82%; CRP, 2.84 mg/dL; and total/direct bilirubin, 3.2/12.2  $\mu\text{mol/L}$ . Abdominal ultrasound showed mild fat stranding around the gallbladder bed and 24 mm of right pleural effusion. The patient was discharged from the hospital 5 days after surgery.



DOI: 10.12998/wjcc.v10.i24.8775 Copyright ©The Author(s) 2022.

**Figure 4 Contrast-enhanced abdominal computed tomography after 3 days.** Axial image shows further increased gallbladder wall thickening (~20 mm) and subserosal edema (blue arrow), without evidence of stones, pseudoaneurysm, or contrast agent leakage. A small, high-density nodule can be observed in the gallbladder wall (white arrow).



DOI: 10.12998/wjcc.v10.i24.8775 Copyright ©The Author(s) 2022.

**Figure 5 Laparoscopic cholecystectomy.** Image revealed 2 holes 1 mm in size (black arrows) in the base and funnel of the gallbladder.

## DISCUSSION

Lymphatic intervention was first described by Cope *et al*[5], and advances in interventional techniques continue to be developed. The efficacy of lymphatic intervention has been reported by many authors[2, 6,7]. Thoracic duct embolization is a new and minimally invasive approach with a high success rate and low morbidity and mortality rates[2]. Cope and Kaiser reported a response rate of 73.8% after thoracic duct embolization with no morbidity or mortality[4]. The overall clinical success rate reported by Pamarthi *et al*[3] was 72%, and Itkin *et al*[7] reported a success rate of 90%.

According to the Society of Interventional Radiology Clinical Practice Guidelines, post-intervention complications can be categorized as major or minor complications[8]. Major complications of lymphatic interventions include pulmonary or portal vein embolism caused by glue or guidewire fragment retention. Minor complications often include anesthesia side effects, skin injuries, or perihepatic hematoma[3]. In addition, some delayed mild complications as observed by Laslett *et al*[9] are lower-extremity edema and chronic diarrhea.

Cope *et al*[4] reported no complications associated with thoracic duct embolization. Pamarthi *et al*[3] and Itkin *et al*[7] reported complication rates of 6.7% and 3%, respectively. Although limited data are available regarding complications, several articles have reported pulmonary embolisms associated with glue, chylous ascites, perihepatic hematoma, bile leakage, or bile peritonitis[3,10,11].

As chylothorax in this patient lasted for 1 mo, not an emergency condition, we decided to treat after a multidisciplinary consultation. Therefore, thoracic duct embolization was performed 3 days after hospitalization. Our patient experienced moderate-severe abdominal pain and fever following thoracic duct embolization, which increased over several days. A contrast-enhanced abdominal CT performed immediately after the intervention revealed that the gallbladder wall was thick and edematous, with peripancreatic fluid extending to the bilateral anterior pararenal space and paracolic gutters. The initial diagnosis was pancreatitis, which is also an extremely uncommon complication following thoracic duct

embolization[12]. Unfortunately, the clinical presentation, laboratory tests, and imaging with contrast-enhanced abdominal CT 3 days later were not compatible with the initial diagnosis. We reviewed the initial CT images and realized that we missed a critical sign: a small, high-density nodule in the gallbladder wall, corresponding to lipiodol deposition due to penetration of the percutaneous interventional needle into the gallbladder wall. As the needle punctured through the right abdominal wall, it penetrated into the gallbladder. Although this is a rare complication infrequently reported in the literature, we suggest that the cisterna chyli should be accessed under DSA accompanied by ultrasound in order to avoid accidental puncture in the future. The patient had symptoms of peritonitis, and bile in the abdominal cavity was confirmed intraoperatively. Thus, the final diagnosis was biliary peritonitis. This case serves as a reminder for clinicians and radiologists of the importance of correct diagnosis following the initial CT scan to allow for timely cholecystectomy.

## CONCLUSION

We report a rare case of cholecystitis following thoracic duct embolization to treat chylothorax due to penetration of the interventional needle into the gallbladder wall. Although thoracic duct embolization is considered to be a safe and minimally invasive method, several major complications may occur. Severe or persistent abdominal pain after intervention should be investigated using imaging findings and laboratory results to diagnose complications following thoracic duct embolization in a timely manner.

## FOOTNOTES

**Author contributions:** Dung LV, Hien MM, Luu DT, and Linh LT prepared the case file retrieval and case summary; Dung LV, Hien MM, and Duc NM designed the research; Dung LV, Hien MM, and Tra My TT performed the research; Dung LV and Duc NM wrote the paper; all authors read and approved the final manuscript.

**Informed consent statement:** Our institution does not require ethical approval for reporting individual cases or case series. Written informed consent was obtained from the patient for their anonymized information to be published in this article.

**Conflict-of-interest statement:** The authors declare that they have no conflicts of interest.

**CARE Checklist (2016) statement:** The authors have read the CARE Checklist (2016), and the manuscript was prepared and revised according to the CARE Checklist (2016).

**Open-Access:** This article is an open-access article that was selected by an in-house editor and fully peer-reviewed by external reviewers. It is distributed in accordance with the Creative Commons Attribution NonCommercial (CC BY-NC 4.0) license, which permits others to distribute, remix, adapt, build upon this work non-commercially, and license their derivative works on different terms, provided the original work is properly cited and the use is non-commercial. See: <https://creativecommons.org/licenses/by-nc/4.0/>

**Country/Territory of origin:** Vietnam

**ORCID number:** Nguyen Minh Duc 0000-0001-5411-1492.

**S-Editor:** Ma YJ

**L-Editor:** Webster JR

**P-Editor:** Ma YJ

## REFERENCES

- 1 Bojanapu S, Khan YS. Thoracic Duct Leak. 2022 May 8. In: StatPearls [Internet]. Treasure Island (FL): StatPearls Publishing; 2022 Jan- [PMID: 32809384]
- 2 Chen E, Itkin M. Thoracic duct embolization for chylous leaks. *Semin Intervent Radiol* 2011; **28**: 63-74 [PMID: 22379277 DOI: 10.1055/s-0031-1273941]
- 3 Pamarthi V, Stecker MS, Schenker MP, Baum RA, Killoran TP, Suzuki Han A, O'Horo SK, Rabkin DJ, Fan CM. Thoracic duct embolization and disruption for treatment of chylous effusions: experience with 105 patients. *J Vasc Interv Radiol* 2014; **25**: 1398-1404 [PMID: 24837980 DOI: 10.1016/j.jvir.2014.03.027]
- 4 Cope C, Kaiser LR. Management of unremitting chylothorax by percutaneous embolization and blockage of retroperitoneal lymphatic vessels in 42 patients. *J Vasc Interv Radiol* 2002; **13**: 1139-1148 [PMID: 12427814 DOI: 10.1016/s1051-0443(07)61956-3]

- 5 **Cope C**, Salem R, Kaiser LR. Management of chylothorax by percutaneous catheterization and embolization of the thoracic duct: prospective trial. *J Vasc Interv Radiol* 1999; **10**: 1248-1254 [PMID: [10527204](#) DOI: [10.1016/s1051-0443\(99\)70227-7](#)]
- 6 **van Goor AT**, Kröger R, Klomp HM, de Jong MA, van den Brekel MW, Balm AJ. Introduction of lymphangiography and percutaneous embolization of the thoracic duct in a stepwise approach to the management of chylous fistulas. *Head Neck* 2007; **29**: 1017-1023 [PMID: [17525970](#) DOI: [10.1002/hed.20624](#)]
- 7 **Itkin M**, Kucharczuk JC, Kwak A, Trerotola SO, Kaiser LR. Nonoperative thoracic duct embolization for traumatic thoracic duct leak: experience in 109 patients. *J Thorac Cardiovasc Surg* 2010; **139**: 584-89; discussion 589 [PMID: [20042200](#) DOI: [10.1016/j.jtcvs.2009.11.025](#)]
- 8 **Sacks D**, McClenny TE, Cardella JF, Lewis CA. Society of Interventional Radiology clinical practice guidelines. *J Vasc Interv Radiol* 2003; **14**: S199-S202 [PMID: [14514818](#) DOI: [10.1097/01.rvi.0000094584.83406.3e](#)]
- 9 **Laslett D**, Trerotola SO, Itkin M. Delayed complications following technically successful thoracic duct embolization. *J Vasc Interv Radiol* 2012; **23**: 76-79 [PMID: [22115569](#) DOI: [10.1016/j.jvir.2011.10.008](#)]
- 10 **Boffa DJ**, Sands MJ, Rice TW, Murthy SC, Mason DP, Geisinger MA, Blackstone EH. A critical evaluation of a percutaneous diagnostic and treatment strategy for chylothorax after thoracic surgery. *Eur J Cardiothorac Surg* 2008; **33**: 435-439 [PMID: [18207415](#) DOI: [10.1016/j.ejcts.2007.11.028](#)]
- 11 **Gaba RC**, Owens CA, Bui JT, Carrillo TC, Knuttinen MG. Chylous ascites: a rare complication of thoracic duct embolization for chylothorax. *Cardiovasc Interv Radiol* 2011; **34** Suppl 2: S245-S249 [PMID: [20517611](#) DOI: [10.1007/s00270-010-9900-4](#)]
- 12 **Bédât B**, Scarpa CR, Sadowski SM, Triponez F, Karenovics W. Acute pancreatitis after thoracic duct ligation for iatrogenic chylothorax. A case report. *BMC Surg* 2017; **17**: 9 [PMID: [28114912](#) DOI: [10.1186/s12893-017-0204-3](#)]



Published by **Baishideng Publishing Group Inc**  
7041 Koll Center Parkway, Suite 160, Pleasanton, CA 94566, USA

**Telephone:** +1-925-3991568

**E-mail:** [bpgoffice@wjgnet.com](mailto:bpgoffice@wjgnet.com)

**Help Desk:** <https://www.f6publishing.com/helpdesk>

<https://www.wjgnet.com>

