

World Journal of *Clinical Cases*

World J Clin Cases 2022 November 16; 10(32): 11665-12065



Contents

Thrice Monthly Volume 10 Number 32 November 16, 2022

OPINION REVIEW

- 11665** Combined use of lactoferrin and vitamin D as a preventive and therapeutic supplement for SARS-CoV-2 infection: Current evidence

Cipriano M, Ruberti E, Tovani-Palone MR

REVIEW

- 11671** Role of adherent invasive *Escherichia coli* in pathogenesis of inflammatory bowel disease
- Zheng L, Duan SL, Dai YC, Wu SC*
- 11690** Emerging potential of ubiquitin-specific proteases and ubiquitin-specific proteases inhibitors in breast cancer treatment

Huang ML, Shen GT, Li NL

MINIREVIEWS

- 11702** Overlap of diabetic ketoacidosis and hyperosmolar hyperglycemic state
- Hassan EM, Mushtaq H, Mahmoud EE, Chhibber S, Saleem S, Issa A, Nitesh J, Jama AB, Khedr A, Boike S, Mir M, Attallah N, Surani S, Khan SA*

ORIGINAL ARTICLE

Case Control Study

- 11712** Comparing the efficacy of different dexamethasone regimens for maintenance treatment of multiple myeloma in standard-risk patients non-eligible for transplantation
- Hu SL, Liu M, Zhang JY*

Retrospective Cohort Study

- 11726** Development and validation of novel nomograms to predict survival of patients with tongue squamous cell carcinoma
- Luo XY, Zhang YM, Zhu RQ, Yang SS, Zhou LF, Zhu HY*

Retrospective Study

- 11743** Non-invasive model for predicting esophageal varices based on liver and spleen volume
- Yang LB, Zhao G, Tantai XX, Xiao CL, Qin SW, Dong L, Chang DY, Jia Y, Li H*

Clinical Trials Study

- 11753** Clinical efficacy of electromagnetic field therapy combined with traditional Chinese pain-reducing paste in myofascial pain syndrome
- Xiao J, Cao BY, Xie Z, Ji YX, Zhao XL, Yang HJ, Zhuang W, Sun HH, Liang WM*

- 11766** Endothelial injury and inflammation in patients with hyperuricemic nephropathy at chronic kidney disease stages 1-2 and 3-4

Xu L, Lu LL, Wang YT, Zhou JB, Wang CX, Xin JD, Gao JD

Observational Study

- 11775** Quality of life and symptom distress after cytoreductive surgery and hyperthermic intraperitoneal chemotherapy

Wang YF, Wang TY, Liao TT, Lin MH, Huang TH, Hsieh MC, Chen VCH, Lee LW, Huang WS, Chen CY

- 11789** Development and validation of a risk assessment model for prediabetes in China national diabetes survey

Yu LP, Dong F, Li YZ, Yang WY, Wu SN, Shan ZY, Teng WP, Zhang B

Case Control Study

- 11804** T-cell immunoglobulin mucin molecule-3, transformation growth factor β , and chemokine-12 and the prognostic status of diffuse large B-cell lymphoma

Wu H, Sun HC, Ouyang GF

META-ANALYSIS

- 11812** Prostate artery embolization on lower urinary tract symptoms related to benign prostatic hyperplasia: A systematic review and meta-analysis

Wang XY, Chai YM, Huang WH, Zhang Y

CASE REPORT

- 11827** Paraneoplastic neurological syndrome caused by cystitis glandularis: A case report and literature review

Zhao DH, Li QJ

- 11835** Neck pain and absence of cranial nerve symptom are clues of cervical myelopathy mimicking stroke: Two case reports

Zhou LL, Zhu SG, Fang Y, Huang SS, Huang JF, Hu ZD, Chen JY, Zhang X, Wang JY

- 11845** Nine-year survival of a 60-year-old woman with locally advanced pancreatic cancer under repeated open approach radiofrequency ablation: A case report

Zhang JY, Ding JM, Zhou Y, Jing X

- 11853** Laparoscopic treatment of inflammatory myofibroblastic tumor in liver: A case report

Li YY, Zang JF, Zhang C

- 11861** Survival of a patient who received extracorporeal membrane oxygenation due to postoperative myocardial infarction: A case report

Wang QQ, Jiang Y, Zhu JG, Zhang LW, Tong HJ, Shen P

- 11869** Triple hit to the kidney-dual pathological crescentic glomerulonephritis and diffuse proliferative immune complex-mediated glomerulonephritis: A case report

Ibrahim D, Brodsky SV, Satoskar AA, Biederman L, Maroz N

- 11877** Successful transcatheter arterial embolization treatment for chest wall haematoma following permanent pacemaker implantation: A case report
Zheng J, Tu XM, Gao ZY
- 11882** Brachiocephalic to left brachial vein thrombotic vasculitis accompanying mediastinal pancreatic fistula: A case report
Kokubo R, Yunaiyama D, Tajima Y, Kugai N, Okubo M, Saito K, Tsuchiya T, Itoi T
- 11889** Long survival after immunotherapy plus paclitaxel in advanced intrahepatic cholangiocarcinoma: A case report and review of literature
He MY, Yan FF, Cen KL, Shen P
- 11898** Successful treatment of pulmonary hypertension in a neonate with bronchopulmonary dysplasia: A case report and literature review
Li J, Zhao J, Yang XY, Shi J, Liu HT
- 11908** Idiopathic tenosynovitis of the wrist with multiple rice bodies: A case report and review of literature
Tian Y, Zhou HB, Yi K, Wang KJ
- 11921** Endoscopic resection of bronchial mucoepidermoid carcinoma in a young adult man: A case report and review of literature
Ding YM, Wang Q
- 11929** Blue rubber bleb nevus syndrome complicated with disseminated intravascular coagulation and intestinal obstruction: A case report
Zhai JH, Li SX, Jin G, Zhang YY, Zhong WL, Chai YF, Wang BM
- 11936** Management of symptomatic cervical facet cyst with cervical interlaminar epidural block: A case report
Hwang SM, Lee MK, Kim S
- 11942** Primary squamous cell carcinoma with sarcomatoid differentiation of the kidney associated with ureteral stone obstruction: A case report
Liu XH, Zou QM, Cao JD, Wang ZC
- 11949** Successful live birth following hysteroscopic adhesiolysis under laparoscopic observation for Asherman's syndrome: A case report
Kakinuma T, Kakinuma K, Matsuda Y, Ohwada M, Yanagida K
- 11955** What is responsible for acute myocardial infarction in combination with aplastic anemia? A case report and literature review
Zhao YN, Chen WW, Yan XY, Liu K, Liu GH, Yang P
- 11967** Repeated ventricular bigeminy by trigeminocardiac reflex despite atropine administration during superficial upper lip surgery: A case report
Cho SY, Jang BH, Jeon HJ, Kim DJ
- 11974** Testis and epididymis-unusual sites of metastatic gastric cancer: A case report and review of the literature
Ji JJ, Guan FJ, Yao Y, Sun LJ, Zhang GM

- 11980** t(4;11) translocation in hyperdiploid *de novo* adult acute myeloid leukemia: A case report
Zhang MY, Zhao Y, Zhang JH
- 11987** Sun-burn induced upper limb lymphedema 11 years following breast cancer surgery: A case report
Li M, Guo J, Zhao R, Gao JN, Li M, Wang LY
- 11993** Minimal change disease caused by polycythemia vera: A case report
Xu L, Lu LL, Gao JD
- 12000** Vitreous amyloidosis caused by a Lys55Asn variant in transthyretin: A case report
Tan Y, Tao Y, Sheng YJ, Zhang CM
- 12007** Endoscopic nasal surgery for mucocoele and pyogenic mucocoele of turbinate: Three case reports
Sun SJ, Chen AP, Wan YZ, Ji HZ
- 12015** Transcatheter arterial embolization for traumatic injury to the pharyngeal branch of the ascending pharyngeal artery: Two case reports
Yunaiyama D, Takara Y, Kobayashi T, Muraki M, Tanaka T, Okubo M, Saguchi T, Nakai M, Saito K, Tsukahara K, Ishii Y, Homma H
- 12022** Retroperitoneal leiomyoma located in the broad ligament: A case report
Zhang XS, Lin SZ, Liu YJ, Zhou L, Chen QD, Wang WQ, Li JY
- 12028** Primary testicular neuroendocrine tumor with liver lymph node metastasis: A case report and review of the literature
Xiao T, Luo LH, Guo LF, Wang LQ, Feng L
- 12036** Endodontic treatment of the maxillary first molar with palatal canal variations: A case report and review of literature
Chen K, Ran X, Wang Y
- 12045** Langerhans cell histiocytosis involving only the thymus in an adult: A case report
Li YF, Han SH, Qie P, Yin QF, Wang HE

LETTER TO THE EDITOR

- 12052** Heart failure with preserved ejection fraction: A distinct heart failure phenotype?
Triposkiadis F, Giamouzis G, Skoularigis J, Xanthopoulos A
- 12056** Insight into appropriate medication prescribing for elderly in the COVID-19 era
Omar AS, Kaddoura R
- 12059** Commentary on "Gallstone associated celiac trunk thromboembolisms complicated with splenic infarction: A case report"
Tokur O, Aydın S, Kantarci M
- 12062** Omicron targets upper airways in pediatrics, elderly and unvaccinated population
Nori W, Ghani Zghair MA

ABOUT COVER

Editorial Board Member of *World Journal of Clinical Cases*, Camelia Cristina Diaconu, FACC, FACP, FESC, MHSc, PhD, Associate Professor, Department of Internal Medicine, "Carol Davila" University of Medicine and Pharmacy, Clinical Emergency Hospital of Bucharest, Bucharest 014461, Romania. drcameliadiaconu@gmail.com

AIMS AND SCOPE

The primary aim of *World Journal of Clinical Cases* (WJCC, *World J Clin Cases*) is to provide scholars and readers from various fields of clinical medicine with a platform to publish high-quality clinical research articles and communicate their research findings online.

WJCC mainly publishes articles reporting research results and findings obtained in the field of clinical medicine and covering a wide range of topics, including case control studies, retrospective cohort studies, retrospective studies, clinical trials studies, observational studies, prospective studies, randomized controlled trials, randomized clinical trials, systematic reviews, meta-analysis, and case reports.

INDEXING/ABSTRACTING

The WJCC is now abstracted and indexed in Science Citation Index Expanded (SCIE, also known as SciSearch®), Journal Citation Reports/Science Edition, Current Contents®/Clinical Medicine, PubMed, PubMed Central, Scopus, Reference Citation Analysis, China National Knowledge Infrastructure, China Science and Technology Journal Database, and Superstar Journals Database. The 2022 Edition of Journal Citation Reports® cites the 2021 impact factor (IF) for WJCC as 1.534; IF without journal self cites: 1.491; 5-year IF: 1.599; Journal Citation Indicator: 0.28; Ranking: 135 among 172 journals in medicine, general and internal; and Quartile category: Q4. The WJCC's CiteScore for 2021 is 1.2 and Scopus CiteScore rank 2021: General Medicine is 443/826.

RESPONSIBLE EDITORS FOR THIS ISSUE

Production Editor: Hua-Ge Yin; Production Department Director: Xu Guo; Editorial Office Director: Jin-Lei Wang.

NAME OF JOURNAL

World Journal of Clinical Cases

ISSN

ISSN 2307-8960 (online)

LAUNCH DATE

April 16, 2013

FREQUENCY

Thrice Monthly

EDITORS-IN-CHIEF

Bao-Gan Peng, Jerzy Tadeusz Chudek, George Kontogeorgos, Maurizio Serati, Ja Hyeon Ku

EDITORIAL BOARD MEMBERS

<https://www.wjgnet.com/2307-8960/editorialboard.htm>

PUBLICATION DATE

November 16, 2022

COPYRIGHT

© 2022 Baishideng Publishing Group Inc

INSTRUCTIONS TO AUTHORS

<https://www.wjgnet.com/bpg/gerinfo/204>

GUIDELINES FOR ETHICS DOCUMENTS

<https://www.wjgnet.com/bpg/GerInfo/287>

GUIDELINES FOR NON-NATIVE SPEAKERS OF ENGLISH

<https://www.wjgnet.com/bpg/gerinfo/240>

PUBLICATION ETHICS

<https://www.wjgnet.com/bpg/GerInfo/288>

PUBLICATION MISCONDUCT

<https://www.wjgnet.com/bpg/gerinfo/208>

ARTICLE PROCESSING CHARGE

<https://www.wjgnet.com/bpg/gerinfo/242>

STEPS FOR SUBMITTING MANUSCRIPTS

<https://www.wjgnet.com/bpg/GerInfo/239>

ONLINE SUBMISSION

<https://www.f6publishing.com>



Primary squamous cell carcinoma with sarcomatoid differentiation of the kidney associated with ureteral stone obstruction: A case report

Xue-Hua Liu, Qian-Ming Zou, Jia-Dong Cao, Zhi-Chao Wang

Specialty type: Medicine, research and experimental

Provenance and peer review:

Unsolicited article; Externally peer reviewed.

Peer-review model: Single blind

Peer-review report's scientific quality classification

Grade A (Excellent): 0
Grade B (Very good): 0
Grade C (Good): C, C
Grade D (Fair): 0
Grade E (Poor): 0

P-Reviewer: Eccher A, Italy; Patil S, Saudi Arabia

Received: July 3, 2022

Peer-review started: July 3, 2022

First decision: August 21, 2022

Revised: September 2, 2022

Accepted: October 11, 2022

Article in press: October 11, 2022

Published online: November 16, 2022



Xue-Hua Liu, Qian-Ming Zou, Jia-Dong Cao, Zhi-Chao Wang, Department of Urology Surgery, Fangcun Hospital of Guangdong Provincial Hospital of traditional Chinese Medicine, Guangzhou 510120, Guangdong Province, China

Corresponding author: Zhi-Chao Wang, MD, Attending Doctor, Department of Urology Surgery, Fangcun Hospital of Guangdong Provincial Hospital of traditional Chinese Medicine, NO. 36 Lihai Road, Liwan District, Guangzhou 510120, Guangdong Province, China.

13602495696@163.com

Abstract

BACKGROUND

Primary squamous cell carcinoma (SCC) with sarcomatoid differentiation of the kidney was rarely reported. This disease is usually related to renal stones, and due to a lack of symptoms and radiological features, patients usually attend the hospital with late stage disease.

CASE SUMMARY

A 54-years-old female presented with left flank pain and an abdominal mass for 6 mo. Imaging studies revealed that the left kidney was enlarged and massive hydronephrosis was present. A stone was seen in the ureteropelvic junction. The patient subsequently underwent left radical nephrectomy, and histopathological examination of the mass revealed a poorly differentiated renal SCC with sarcomatoid differentiation. After primary surgery, the patient received four cycles of tirilizumab. Four months later, the patient developed adrenal, lymph, and uterine appendage metastases.

CONCLUSION

SCC of the kidney has a poor prognosis, and should be considered in patients with a renal mass, long-standing urinary calculi and massive hydronephrosis.

Key Words: Squamous cell carcinoma; Sarcomatoid differentiation; Kidney; Ureteral stone; Case report

©The Author(s) 2022. Published by Baishideng Publishing Group Inc. All rights reserved.

Core Tip: Squamous cell carcinoma (SCC) with sarcomatoid differentiation is extremely rare and has a poor prognosis. The presence of SCC should be considered when a renal mass is found in a patient with long-term stones and hydronephrosis. Early surgical treatment may be beneficial.

Citation: Liu XH, Zou QM, Cao JD, Wang ZC. Primary squamous cell carcinoma with sarcomatoid differentiation of the kidney associated with ureteral stone obstruction: A case report. *World J Clin Cases* 2022; 10(32): 11942-11948

URL: <https://www.wjgnet.com/2307-8960/full/v10/i32/11942.htm>

DOI: <https://dx.doi.org/10.12998/wjcc.v10.i32.11942>

INTRODUCTION

Primary squamous cell carcinoma (SCC) of the kidney is a rare cancer with a poor prognosis at the time of presentation[1]. Renal SCC with sarcomatoid differentiation is a rare condition. To date, there has been only one report of SCC of the renal pelvis with sarcomatoid differentiation[2]. We report a case of primary renal SCC with sarcomatoid differentiation, associated with ureteral stones and severe hydronephrosis.

CASE PRESENTATION

Chief complaints

A 54-year-old female patient presented to the hospital with flank pain and an abdominal mass for 6 mo.

History of present illness

The patient presented with flank pain and an abdominal mass for 6 mo which had become worse in the previous 2 wk.

History of past illness

The patient had no history of any other diseases, and had no history of surgery.

Personal and family history

The patient had previous normal menstruation, but was now menopausal. She denied any relevant family history.

Physical examination

General and physical examination results were normal. Abdominal examination revealed a large mass in the left abdomen.

Laboratory examinations

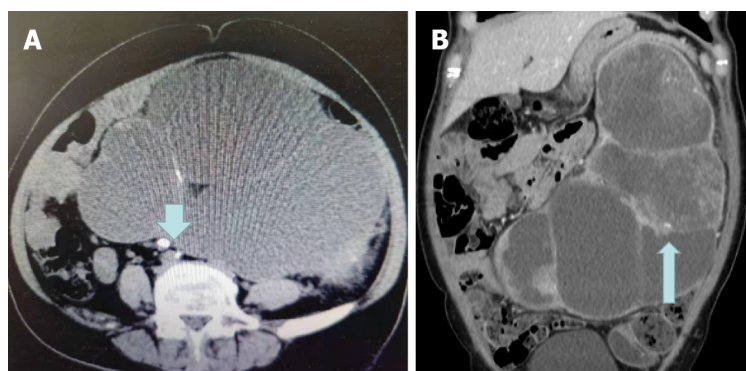
The patient's serum urea and creatinine levels were 3.37 mmol/L and 67 µmol/L, respectively. Urine examination revealed hematuria (grade 1+).

Imaging examinations

Ultrasound showed that the left kidney was enlarged with severe hydronephrosis and a thin renal parenchyma. A stone measuring approximately 8 mm was observed in the ureteropelvic junction. Two round masses were observed in the middle and upper parts of the left kidney. Abdominal computed tomography (CT) revealed an 8-mm stone in the left upper ureter (Figure 1A), and severe hydronephrosis was seen in the left kidney. The masses detected in the left renal parenchyma were quasi-circular, uneven, and had a slightly low-density shadow and uneven enhancement, and the largest measured approximately 9 cm × 10 cm (Figure 1B).

Further diagnostic work-up

A left radical nephrectomy was subsequently performed. Gross examination of the radical nephrectomy specimen revealed enlargement of the left kidney. There were several nodules in the renal parenchyma, 20 cm × 13 cm × 10 cm in size, most of which were diffuse flakes, and some were spindle-shaped and fascicular, a small amount of bone-like matrix was also observed. Scattered squamous areas were observed in the diffuse area, along with the formation of keratinized beads.



DOI: 10.12998/wjcc.v10.i32.11942 Copyright ©The Author(s) 2022.

Figure 1 Computed tomography. A: Computed tomography (CT) image showing a ureter stone (arrow); B: CT image showing renal parenchyma masses (arrow).

Microscopic examination revealed SCC of the renal parenchyma with dedifferentiated sarcomatosis (Figure 2). The proportion of sarcomatoid components was approximately 50%.

Immunohistochemistry revealed the following: Creatine kinase (CK) (squamous area +), Epithelial membrane antigen (squamous area +), Cluster of Differentiation (CD)10 (squamous area and diffuse area +), vimentin (squamous area +), CK7 (small focus squamous area +), Melanoma marker (human) monoclonal antibody (HMB45) (-), S100 (-), Carbonic Anhydrase ix (small amount +), Ki67 (hot spot area about 80% +), P40 (small focus squamous area +) (Figure 3A), p63 (squamous area and diffuse area +) (Figure 3B), CK20 (-), p53 (approximately 85% +), GATA-3 (squamous area and diffuse area +), CK18 (small focus squamous area +), Smooth Muscle Actin (-), CD34 (-), and desmin (-).

FINAL DIAGNOSIS

Renal SCC with sarcomatoid differentiation.

TREATMENT

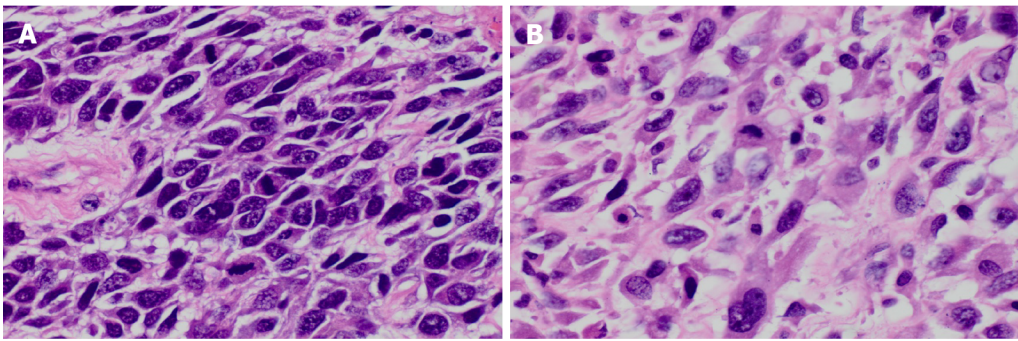
Following radical nephrectomy, the patient received four cycles of tirelizumab.

OUTCOME AND FOLLOW-UP

The patient developed adrenal, lymph, and uterine appendage metastases. Died 7 mo after nephrectomy.

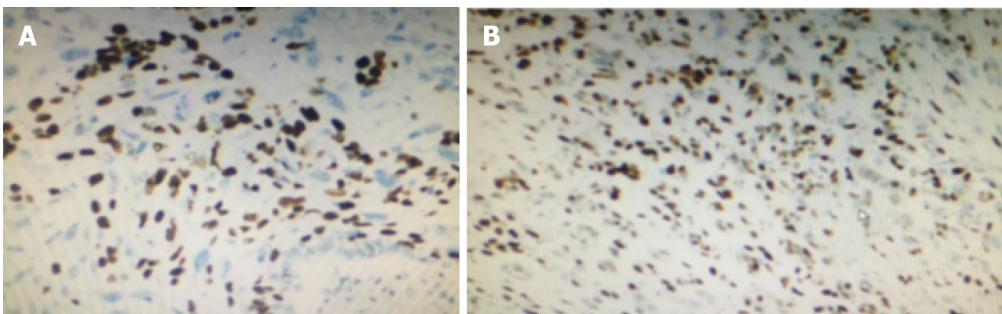
DISCUSSION

SCC of the kidney is a very rare malignancy, mostly diagnosed at advanced stages, and represents approximately 1.4% of all renal malignancies[3]. Only a few cases have been reported in the literature; therefore, the data on SCC of the kidney are from a few case reports[4,5]. Squamous cell cancers of the kidney are associated with a poor prognosis. SCC presents with late stage disease and poor survival rates[3]. Some case series have reported a median survival time of 3.5 mo[6]. Renal SCC with sarcomatoid differentiation is even rarer. There is only one other reported case of renal SCC with sarcomatoid differentiation[2]. This case was a 55-years-old female, presented with flank pain and an abdominal mass, CT scan demonstrated gross right renal hydronephrosis with renal parenchymal atrophy and multiple right renal calculi. She accepted open nephrectomy. The pathology suggested that the macroscopic examination showed hydronephrosis with severe pyonephritis, obvious cortical atrophy and obstructive kidney stones at pelviureteric junction. Histological examination unexpectedly revealed squamous metaplasia of pelvic urothelial epithelium with free debris of SCC in situ and sarcomatoid tumors. The five epithelial markers of sarcomatoid tumors were all negative, and only P63 was positive. Two months after the operation, a large mass was found in the original renal fossa. The needle biopsy considered SCC with sarcomatoid transformation. Then she received palliative radiotherapy and died 3 mo after nephrectomy. Our case is similar to this case, the difference is that our



DOI: 10.12998/wjcc.v10.i32.11942 Copyright ©The Author(s) 2022.

Figure 2 Pathological results of renal mass after resection. A: Squamous cell carcinoma area (hematoxylin-eosin, 400 ×); B: Dedifferentiated sarcomatosis area (hematoxylin-eosin, 400 ×).



DOI: 10.12998/wjcc.v10.i32.11942 Copyright ©The Author(s) 2022.

Figure 3 Immunohistochemistry revealed. A: P40 (small focus squamous area +); B: P63 (squamous area and diffuse area +).

case can find obvious tumors on CT.

Renal cell carcinoma (RCC) with sarcomatoid dedifferentiation is usually referred to as sarcomatoid RCC (sRCC), and sRCC often presents at an advanced stage or metastatic disease and patients rarely survive for > 1 year[7]. However, of all RCC cases, sarcomatoid features are present in approximately 4%–5%[8]. In 2012, the International Society of Urological Pathology Consensus Conference established that sarcomatoid transformation could be designated within RCC if it included atypical spindle cells and resembled “any form of sarcoma”. To establish the diagnosis of sRCC, no minimum number or percentage of sarcomatoid dedifferentiation is needed. Sarcomatoid dedifferentiation may occur in any RCC subtype. This feature is not considered a unique type but is a high-grade manifestation of the original tumor[9].

Clinically, SCC or sRCC occurs in middle-aged patients with symptoms including flank pain, hematuria, and an abdominal mass, and is often associated with chronic inflammation, hydronephrosis, and squamous metaplasia[10]. In 18%–100% of cases, urolithiasis is a main risk factor[2]. Therefore, it is difficult to differentiate the disease clinically.

Radiologically, primary SCC of the renal pelvis may present as a solid tumor, with renal effusion, calcifications, or as infiltrative lesions of the renal pelvis without obvious masses[11]. The differential diagnosis by radiologic comprise primary and secondary kidney cancer and xanthogranulomatous pyelonephritis (XGP) related to nephrolith. XGP is a rare chronic pyelonephritis, usually occurs in chronic obstruction, resulting in hydronephrosis and destruction of renal parenchyma. XGP is usually related to renal calculus, but rarely causes keratinizing squamous metaplasia, it is very similar to renal tumors, leading to misdiagnosis of malignant tumors[12]. The clinical and radiologic features are inapparent in renal SCC may easy to misdiagnose. Histopathology is required for diagnosis[13].

Histologically, SCC shows extensive squamous differentiation and keratin pearls[14]. sRCCs usually is large (median size approximately 10 cm), the section is white or grayish white, and tough texture[15]. Primary SCC of the renal parenchyma needs to be differentiated from the following diseases: Primary SCC of renal pelvis, distant metastatic SCC, and transitional epithelial carcinoma of the urinary with extensive squamous metaplasia. If there are recognizable immature transitional cell components including urothelial carcinoma in situ, should be classified as primary urothelial carcinoma with squamous differentiation. However, typical keratinizing squamous metaplasia of the adjacent flattened urothelium, especially associated with dysplasia, supports a diagnosis of primary SCC of the renal pelvis[4]. In this case, we don't found dysplastic urothelial component or squamous metaplasia of urothelium.

Lee *et al*[8] in their study classified these tumors into two groups, according to localisation of the tumors as central and peripheral. Central renal cell carcinoma presents more Intraluminal components and is usually associated with lymph node metastasis whereas peripheral renal SCC presents with prominent renal parenchymal thickening and might invade the perirenal fat tissue before lymph node or distant metastasis could be identified[8]. Based on these criteria the present case classified as central renal SCC.

The prognosis of renal SCC is poor, and most cases are diagnosed in the late, terminal stage. As 60%–80% of sRCC patients present with advanced or terminal stage disease, the natural history and prognosis is bleak[16]. The median survival time is approximately 6–13 mo, and a higher percentage of sarcomatoid dedifferentiation on histology has been reported to confer a worse prognosis[17]. Due to the heterogeneity of tumors, 3D fusion sampling can better grade and stage tumors, better guide clinical adjuvant treatment and evaluate prognosis[18].

Radical nephrectomy is the first choice for patients with tumors limited to the kidney. However, outcomes are less encouraging for patients with localized sRCC, as approximately 77%–80% of patients receiving nephrectomy for localized sRCC relapse within 5–26 mo[19].

sRCC has a poor response to radiotherapy and chemotherapy. Immune checkpoint inhibitors may have some therapeutic effects in the treatment of sRCCs. In pathology, the activation of the Programmeddeath-1 (PD-1) /Programmed Cell Death-Ligand 1 (PD-L1) signaling pathway probably can block immune cell activation, tumor cells may be use this mechanism to escape anti-tumor immune control. Targeting the PD-1/PD-L1 axis is a milestone breakthrough in cancer treatment[20]. Future clinical trials should focus on therapies such as anti-cytotoxic T-lymphocyte antigen 4 (anti-CTLA4), anti-PDL1, anti-PD1, and combinations with targeted therapy agents that have been shown to augment the cytotoxic tumor immune microenvironment to improve progression and survival outcomes in patients with sRCCs[21,22]. However, as observed in our case, the available medical literature on this rare malignant entity indicates a poor prognosis.

CONCLUSION

Renal SCC with sarcomatoid differentiation is extremely rare, and the prognosis is very poor. In patients with renal masses, long-standing urinary calculi and massive hydronephrosis, should be alert to the possibility of renal SCC. Early surgical treatment combined with immunotherapy may provide a survival benefit.

ACKNOWLEDGEMENTS

We thank Professor Xiang Song-Tao for his guidance in the study.

FOOTNOTES

Author contributions: Liu XH conducted the literature search, collected data, interpreted the data, and prepared the manuscript; Zou QM collected data, interpreted the data, edited the manuscript, and critically revised the draft; Cao JD interpreted the data and critically revised the draft; Wang ZC designed the study, interpreted the data, edited the manuscript, and critically revised the draft; all authors have read and approved the final version to be published.

Informed consent statement: The patient provided written informed consent for publication of this report and accompanying images.

Conflict-of-interest statement: All the authors report no relevant conflicts of interest for this article.

CARE Checklist (2016) statement: The authors have read the CARE Checklist (2016), and the manuscript was prepared and revised according to the CARE Checklist (2016).

Open-Access: This article is an open-access article that was selected by an in-house editor and fully peer-reviewed by external reviewers. It is distributed in accordance with the Creative Commons Attribution NonCommercial (CC BY-NC 4.0) license, which permits others to distribute, remix, adapt, build upon this work non-commercially, and license their derivative works on different terms, provided the original work is properly cited and the use is non-commercial. See: <https://creativecommons.org/licenses/by-nc/4.0/>

Country/Territory of origin: China

ORCID number: Xue-Hua Liu 0000-0002-7779-5169; Qian-Ming Zou 0000-0002-3367-2191; Jia-Dong Cao 0000-0003-1954-7922; Zhi-Chao Wang 0000-0002-0746-900X.

S-Editor: Liu XF

L-Editor: A

P-Editor: Liu XF

REFERENCES

- Jain A, Mittal D, Jindal A, Solanki R, Khatri S, Parikh A, Yadav K. Incidentally detected squamous cell carcinoma of renal pelvis in patients with staghorn calculi: case series with review of the literature. *ISRN Oncol* 2011; **2011**: 620574 [PMID: 22091426 DOI: 10.5402/2011/620574]
- Shepherd ARH, Hoh IMY, Goh EH, Cohen PA, Steele D. Aggressive renal tumour: squamous cell carcinoma with sarcomatoid differentiation. *ANZ J Surg* 2017; **87**: 1054-1056 [PMID: 25962888 DOI: 10.1111/ans.13155]
- Hosseinizadeh M, Mohammadzadeh S. Primary Pure Squamous Cell Carcinoma of Kidney Associated with Multiple Stag Horn Stones. *Int Med Case Rep J* 2020; **13**: 261-263 [PMID: 32753979 DOI: 10.2147/IMCRJ.S261022]
- Ghosh P, Saha K. Primary intraparenchymal squamous cell carcinoma of the kidney: a rare and unique entity. *Case Rep Pathol* 2014; **2014**: 256813 [PMID: 24575308 DOI: 10.1155/2014/256813]
- Kulshreshtha P, Kannan N, Bhardwaj R, Batra S. Primary squamous cell carcinoma of the renal parenchyma. *Indian J Pathol Microbiol* 2012; **55**: 370-371 [PMID: 23032834 DOI: 10.4103/0377-4929.101747]
- Berz D, Rizaack T, Weitzen S, Mega A, Renzulli J, Colvin G. Survival of patients with squamous cell malignancies of the upper urinary tract. *Clin Med Insights Oncol* 2012; **6**: 11-18 [PMID: 22253551 DOI: 10.4137/CMO.S8103]
- Lee TY, Ko SF, Wan YL, Cheng YF, Yang BY, Huang DL, Hsieh HH, Yu TJ, Chen WJ. Renal squamous cell carcinoma: CT findings and clinical significance. *Abdom Imaging* 1998; **23**: 203-208 [PMID: 9516518 DOI: 10.1007/s002619900324]
- Mian BM, Bhadkamkar N, Slaton JW, Pisters PW, Daliani D, Swanson DA, Pisters LL. Prognostic factors and survival of patients with sarcomatoid renal cell carcinoma. *J Urol* 2002; **167**: 65-70 [PMID: 11743277]
- Kim T, Zargar-Shoshtari K, Dhillon J, Lin HY, Yue B, Fishman M, Sverrisson EF, Spiess PE, Gupta S, Poch MA, Sexton WJ. Using percentage of sarcomatoid differentiation as a prognostic factor in renal cell carcinoma. *Clin Genitourin Cancer* 2015; **13**: 225-230 [PMID: 25544725 DOI: 10.1016/j.clgc.2014.12.001]
- Delahunt B, Cheville JC, Martignoni G, Humphrey PA, Magi-Galluzzi C, McKenney J, Egevad L, Algaba F, Moch H, Grignon DJ, Montironi R, Srigley JR; Members of the ISUP Renal Tumor Panel. The International Society of Urological Pathology (ISUP) grading system for renal cell carcinoma and other prognostic parameters. *Am J Surg Pathol* 2013; **37**: 1490-1504 [PMID: 24025520 DOI: 10.1097/PAS.0b013e318299f0fb]
- Kalayci OT, Bozdog Z, Sonmezgoz F, Sahin N. Squamous cell carcinoma of the renal pelvis associated with kidney stones: radiologic imaging features with gross and histopathological correlation. *J Clin Imaging Sci* 2013; **3**: 14 [PMID: 23814686 DOI: 10.4103/2156-7514.109741]
- Mardi K, Kaushal V, Sharma V. Rare coexistence of keratinizing squamous cell carcinoma with xanthogranulomatous pyelonephritis in the same kidney: report of two cases. *J Cancer Res Ther* 2010; **6**: 339-341 [PMID: 21119270 DOI: 10.4103/0973-1482.73351]
- Karabulut A, Emir L, Gonultas M, Incel N, Germiyanoglu C, Erol D. Squamous cell carcinoma located in the renal caliceal system: A case report and review of the literature. *Turk J Cancer* 2002; **32**: 20-24
- Odabas O, Karakok M, Yilmaz Y. Squamous cell carcinoma of kidney. *East J Med* 2000; **5** (1): 35-56
- Diwan AK, Kabre RS. Primary squamous cell carcinoma of kidney: A rare case report. *Int J Med Sci Res Pract* 2015; **2**: 49-53
- Kuroda N, Toi M, Hiroi M, Enzan H. Review of sarcomatoid renal cell carcinoma with focus on clinical and pathobiological aspects. *Histol Histopathol* 2003; **18**: 551-555 [PMID: 12647806 DOI: 10.14670/HH-18.551]
- Alevizakos M, Gaitanidis A, Nasioudis D, Msaouel P, Appleman LJ. Sarcomatoid Renal Cell Carcinoma: Population-Based Study of 879 Patients. *Clin Genitourin Cancer* 2019; **17**: e447-e453 [PMID: 30799129 DOI: 10.1016/j.clgc.2019.01.005]
- Brunelli M, Martignoni G, Malpeli G, Volpe A, Cima L, Raspollini MR, Barbareschi M, Tafuri A, Masi G, Barzon L, Ammendola S, Villanova M, Cerruto MA, Milella M, Buti S, Bersanelli M, Fornarini G, Rebuzzi SE, Vellone VG, Gaggero G, Procopio G, Verzoni E, Bracarda S, Fanelli M, Sabbatini R, Passalacqua R, Perrucci B, Giganti MO, Donini M, Panni S, Tucci M, Prati V, Ortega C, Calì A, Eccher A, Alongi F, Pappagallo G, Iacovelli R, Mosca A, Umari P, Montagnani I, Gobbo S, Atzori F, Munari E, Maruzzo M, Basso U, Pierconti F, Patriarca C, Colombo P, Lapini A, Conti G, Salvioni R, Bollito E, Cossarizza A, Massari F, Rizzo M, Franco R, Zito-Marino F, Aberasturi Plata Y, Galuppini F, Sbaraglia M, Fassan M, Dei Tos AP, Colecchia M, Moch H, Scaltriti M, Porta C, Delahunt B, Giannarini G, Bortolus R, Rescigno P, Banna GL, Signori A, Obispo MAL, Perris R, Antonelli A. Validation of a Novel Three-Dimensional (3D Fusion) Gross Sampling Protocol for Clear Cell Renal Cell Carcinoma to Overcome Intratumoral Heterogeneity: The Meet-Uro 18 Study. *J Pers Med* 2022; **12** [PMID: 35629151 DOI: 10.3390/jpm12050727]
- Adibi M, Thomas AZ, Borregales LD, Merrill MM, Slack RS, Chen HC, Sircar K, Murugan P, Tamboli P, Jonasch E, Tannir NM, Matin SF, Wood CG, Karam JA. Percentage of sarcomatoid component as a prognostic indicator for survival in renal cell carcinoma with sarcomatoid dedifferentiation. *Urol Oncol* 2015; **33**: 427.e17-427.e23 [PMID: 26004164 DOI: 10.1016/j.urolonc.2015.04.011]
- Munari E, Mariotti FR, Quatrini L, Bertoglio P, Tumino N, Vacca P, Eccher A, Ciompi F, Brunelli M, Martignoni G, Bogina G, Moretta L. PD-1/PD-L1 in Cancer: Pathophysiological, Diagnostic and Therapeutic Aspects. *Int J Mol Sci* 2021; **22** [PMID: 34066087 DOI: 10.3390/ijms22105123]
- Merrill MM, Wood CG, Tannir NM, Slack RS, Babaian KN, Jonasch E, Pagliaro LC, Compton Z, Tamboli P, Sircar K, Pisters LL, Matin SF, Karam JA. Clinically nonmetastatic renal cell carcinoma with sarcomatoid dedifferentiation: Natural history and outcomes after surgical resection with curative intent. *Urol Oncol* 2015; **33**: 166.e21-166.e29 [PMID: 25700975]

DOI: [10.1016/j.urolonc.2014.11.021](https://doi.org/10.1016/j.urolonc.2014.11.021)

- 22 **Tannir NM**, Signoretti S, Choueiri TK, McDermott DF, Motzer RJ, Flaifel A, Pignon JC, Ficial M, Frontera OA, George S, Powles T, Donskov F, Harrison MR, Barthélémy P, Tykodi SS, Kocsis J, Ravaud A, Rodriguez-Cid JR, Pal SK, Murad AM, Ishii Y, Saggi SS, McHenry MB, Rini BI. Efficacy and Safety of Nivolumab Plus Ipilimumab vs Sunitinib in First-line Treatment of Patients with Advanced Sarcomatoid Renal Cell Carcinoma. *Clin Cancer Res* 2021; **27**: 78-86 [PMID: [32873572](https://pubmed.ncbi.nlm.nih.gov/32873572/) DOI: [10.1158/1078-0432.CCR-20-2063](https://doi.org/10.1158/1078-0432.CCR-20-2063)]



Published by **Baishideng Publishing Group Inc**
7041 Koll Center Parkway, Suite 160, Pleasanton, CA 94566, USA

Telephone: +1-925-3991568

E-mail: bpgoffice@wjgnet.com

Help Desk: <https://www.f6publishing.com/helpdesk>

<https://www.wjgnet.com>

