

World Journal of *Clinical Cases*

World J Clin Cases 2022 November 16; 10(32): 11665-12065



Contents

Thrice Monthly Volume 10 Number 32 November 16, 2022

OPINION REVIEW

- 11665** Combined use of lactoferrin and vitamin D as a preventive and therapeutic supplement for SARS-CoV-2 infection: Current evidence
Cipriano M, Ruberti E, Tovani-Palone MR

REVIEW

- 11671** Role of adherent invasive *Escherichia coli* in pathogenesis of inflammatory bowel disease
Zheng L, Duan SL, Dai YC, Wu SC
- 11690** Emerging potential of ubiquitin-specific proteases and ubiquitin-specific proteases inhibitors in breast cancer treatment
Huang ML, Shen GT, Li NL

MINIREVIEWS

- 11702** Overlap of diabetic ketoacidosis and hyperosmolar hyperglycemic state
Hassan EM, Mushtaq H, Mahmoud EE, Chhibber S, Saleem S, Issa A, Nitesh J, Jama AB, Khedr A, Boike S, Mir M, Attallah N, Surani S, Khan SA

ORIGINAL ARTICLE

Case Control Study

- 11712** Comparing the efficacy of different dexamethasone regimens for maintenance treatment of multiple myeloma in standard-risk patients non-eligible for transplantation
Hu SL, Liu M, Zhang JY

Retrospective Cohort Study

- 11726** Development and validation of novel nomograms to predict survival of patients with tongue squamous cell carcinoma
Luo XY, Zhang YM, Zhu RQ, Yang SS, Zhou LF, Zhu HY

Retrospective Study

- 11743** Non-invasive model for predicting esophageal varices based on liver and spleen volume
Yang LB, Zhao G, Tantai XX, Xiao CL, Qin SW, Dong L, Chang DY, Jia Y, Li H

Clinical Trials Study

- 11753** Clinical efficacy of electromagnetic field therapy combined with traditional Chinese pain-reducing paste in myofascial pain syndrome
Xiao J, Cao BY, Xie Z, Ji YX, Zhao XL, Yang HJ, Zhuang W, Sun HH, Liang WM

- 11766** Endothelial injury and inflammation in patients with hyperuricemic nephropathy at chronic kidney disease stages 1-2 and 3-4

Xu L, Lu LL, Wang YT, Zhou JB, Wang CX, Xin JD, Gao JD

Observational Study

- 11775** Quality of life and symptom distress after cytoreductive surgery and hyperthermic intraperitoneal chemotherapy

Wang YF, Wang TY, Liao TT, Lin MH, Huang TH, Hsieh MC, Chen VCH, Lee LW, Huang WS, Chen CY

- 11789** Development and validation of a risk assessment model for prediabetes in China national diabetes survey

Yu LP, Dong F, Li YZ, Yang WY, Wu SN, Shan ZY, Teng WP, Zhang B

- 11804** T-cell immunoglobulin mucin molecule-3, transformation growth factor β , and chemokine-12 and the prognostic status of diffuse large B-cell lymphoma

Wu H, Sun HC, Ouyang GF

META-ANALYSIS

- 11812** Prostate artery embolization on lower urinary tract symptoms related to benign prostatic hyperplasia: A systematic review and meta-analysis

Wang XY, Chai YM, Huang WH, Zhang Y

CASE REPORT

- 11827** Paraneoplastic neurological syndrome caused by cystitis glandularis: A case report and literature review

Zhao DH, Li QJ

- 11835** Neck pain and absence of cranial nerve symptom are clues of cervical myelopathy mimicking stroke: Two case reports

Zhou LL, Zhu SG, Fang Y, Huang SS, Huang JF, Hu ZD, Chen JY, Zhang X, Wang JY

- 11845** Nine-year survival of a 60-year-old woman with locally advanced pancreatic cancer under repeated open approach radiofrequency ablation: A case report

Zhang JY, Ding JM, Zhou Y, Jing X

- 11853** Laparoscopic treatment of inflammatory myofibroblastic tumor in liver: A case report

Li YY, Zang JF, Zhang C

- 11861** Survival of a patient who received extracorporeal membrane oxygenation due to postoperative myocardial infarction: A case report

Wang QQ, Jiang Y, Zhu JG, Zhang LW, Tong HJ, Shen P

- 11869** Triple hit to the kidney-dual pathological crescentic glomerulonephritis and diffuse proliferative immune complex-mediated glomerulonephritis: A case report

Ibrahim D, Brodsky SV, Satoskar AA, Biederman L, Maroz N

- 11877** Successful transcatheter arterial embolization treatment for chest wall haematoma following permanent pacemaker implantation: A case report

Zheng J, Tu XM, Gao ZY

- 11882** Brachiocephalic to left brachial vein thrombotic vasculitis accompanying mediastinal pancreatic fistula: A case report
Kokubo R, Yunaiyama D, Tajima Y, Kugai N, Okubo M, Saito K, Tsuchiya T, Itoi T
- 11889** Long survival after immunotherapy plus paclitaxel in advanced intrahepatic cholangiocarcinoma: A case report and review of literature
He MY, Yan FF, Cen KL, Shen P
- 11898** Successful treatment of pulmonary hypertension in a neonate with bronchopulmonary dysplasia: A case report and literature review
Li J, Zhao J, Yang XY, Shi J, Liu HT
- 11908** Idiopathic tenosynovitis of the wrist with multiple rice bodies: A case report and review of literature
Tian Y, Zhou HB, Yi K, Wang KJ
- 11921** Endoscopic resection of bronchial mucoepidermoid carcinoma in a young adult man: A case report and review of literature
Ding YM, Wang Q
- 11929** Blue rubber bleb nevus syndrome complicated with disseminated intravascular coagulation and intestinal obstruction: A case report
Zhai JH, Li SX, Jin G, Zhang YY, Zhong WL, Chai YF, Wang BM
- 11936** Management of symptomatic cervical facet cyst with cervical interlaminar epidural block: A case report
Hwang SM, Lee MK, Kim S
- 11942** Primary squamous cell carcinoma with sarcomatoid differentiation of the kidney associated with ureteral stone obstruction: A case report
Liu XH, Zou QM, Cao JD, Wang ZC
- 11949** Successful live birth following hysteroscopic adhesiolysis under laparoscopic observation for Asherman's syndrome: A case report
Kakinuma T, Kakinuma K, Matsuda Y, Ohwada M, Yanagida K
- 11955** What is responsible for acute myocardial infarction in combination with aplastic anemia? A case report and literature review
Zhao YN, Chen WW, Yan XY, Liu K, Liu GH, Yang P
- 11967** Repeated ventricular bigeminy by trigeminocardiac reflex despite atropine administration during superficial upper lip surgery: A case report
Cho SY, Jang BH, Jeon HJ, Kim DJ
- 11974** Testis and epididymis-unusual sites of metastatic gastric cancer: A case report and review of the literature
Ji JJ, Guan FJ, Yao Y, Sun LJ, Zhang GM
- 11980** t(4;11) translocation in hyperdiploid *de novo* adult acute myeloid leukemia: A case report
Zhang MY, Zhao Y, Zhang JH

- 11987** Sun-burn induced upper limb lymphedema 11 years following breast cancer surgery: A case report
Li M, Guo J, Zhao R, Gao JN, Li M, Wang LY
- 11993** Minimal change disease caused by polycythemia vera: A case report
Xu L, Lu LL, Gao JD
- 12000** Vitreous amyloidosis caused by a Lys55Asn variant in transthyretin: A case report
Tan Y, Tao Y, Sheng YJ, Zhang CM
- 12007** Endoscopic nasal surgery for mucocoele and pyogenic mucocoele of turbinate: Three case reports
Sun SJ, Chen AP, Wan YZ, Ji HZ
- 12015** Transcatheter arterial embolization for traumatic injury to the pharyngeal branch of the ascending pharyngeal artery: Two case reports
Yunaiyama D, Takara Y, Kobayashi T, Muraki M, Tanaka T, Okubo M, Saguchi T, Nakai M, Saito K, Tsukahara K, Ishii Y, Homma H
- 12022** Retroperitoneal leiomyoma located in the broad ligament: A case report
Zhang XS, Lin SZ, Liu YJ, Zhou L, Chen QD, Wang WQ, Li JY
- 12028** Primary testicular neuroendocrine tumor with liver lymph node metastasis: A case report and review of the literature
Xiao T, Luo LH, Guo LF, Wang LQ, Feng L
- 12036** Endodontic treatment of the maxillary first molar with palatal canal variations: A case report and review of literature
Chen K, Ran X, Wang Y
- 12045** Langerhans cell histiocytosis involving only the thymus in an adult: A case report
Li YF, Han SH, Qie P, Yin QF, Wang HE

LETTER TO THE EDITOR

- 12052** Heart failure with preserved ejection fraction: A distinct heart failure phenotype?
Triposkiadis F, Giamouzis G, Skoularigis J, Xanthopoulos A
- 12056** Insight into appropriate medication prescribing for elderly in the COVID-19 era
Omar AS, Kaddoura R
- 12059** Commentary on "Gallstone associated celiac trunk thromboembolisms complicated with splenic infarction: A case report"
Tokur O, Aydın S, Kantarci M
- 12062** Omicron targets upper airways in pediatrics, elderly and unvaccinated population
Nori W, Ghani Zghair MA

ABOUT COVER

Editorial Board Member of *World Journal of Clinical Cases*, Camelia Cristina Diaconu, FACC, FACP, FESC, MHSc, PhD, Associate Professor, Department of Internal Medicine, "Carol Davila" University of Medicine and Pharmacy, Clinical Emergency Hospital of Bucharest, Bucharest 014461, Romania. drcameliadiaconu@gmail.com

AIMS AND SCOPE

The primary aim of *World Journal of Clinical Cases* (WJCC, *World J Clin Cases*) is to provide scholars and readers from various fields of clinical medicine with a platform to publish high-quality clinical research articles and communicate their research findings online.

WJCC mainly publishes articles reporting research results and findings obtained in the field of clinical medicine and covering a wide range of topics, including case control studies, retrospective cohort studies, retrospective studies, clinical trials studies, observational studies, prospective studies, randomized controlled trials, randomized clinical trials, systematic reviews, meta-analysis, and case reports.

INDEXING/ABSTRACTING

The WJCC is now abstracted and indexed in Science Citation Index Expanded (SCIE, also known as SciSearch®), Journal Citation Reports/Science Edition, Current Contents®/Clinical Medicine, PubMed, PubMed Central, Scopus, Reference Citation Analysis, China National Knowledge Infrastructure, China Science and Technology Journal Database, and Superstar Journals Database. The 2022 Edition of Journal Citation Reports® cites the 2021 impact factor (IF) for WJCC as 1.534; IF without journal self cites: 1.491; 5-year IF: 1.599; Journal Citation Indicator: 0.28; Ranking: 135 among 172 journals in medicine, general and internal; and Quartile category: Q4. The WJCC's CiteScore for 2021 is 1.2 and Scopus CiteScore rank 2021: General Medicine is 443/826.

RESPONSIBLE EDITORS FOR THIS ISSUE

Production Editor: Hua-Ge Yin; Production Department Director: Xu Guo; Editorial Office Director: Jin-Lei Wang.

NAME OF JOURNAL

World Journal of Clinical Cases

ISSN

ISSN 2307-8960 (online)

LAUNCH DATE

April 16, 2013

FREQUENCY

Thrice Monthly

EDITORS-IN-CHIEF

Bao-Gan Peng, Jerzy Tadeusz Chudek, George Kontogeorgos, Maurizio Serati, Ja Hyeon Ku

EDITORIAL BOARD MEMBERS

<https://www.wjgnet.com/2307-8960/editorialboard.htm>

PUBLICATION DATE

November 16, 2022

COPYRIGHT

© 2022 Baishideng Publishing Group Inc

INSTRUCTIONS TO AUTHORS

<https://www.wjgnet.com/bpg/gerinfo/204>

GUIDELINES FOR ETHICS DOCUMENTS

<https://www.wjgnet.com/bpg/GerInfo/287>

GUIDELINES FOR NON-NATIVE SPEAKERS OF ENGLISH

<https://www.wjgnet.com/bpg/gerinfo/240>

PUBLICATION ETHICS

<https://www.wjgnet.com/bpg/GerInfo/288>

PUBLICATION MISCONDUCT

<https://www.wjgnet.com/bpg/gerinfo/208>

ARTICLE PROCESSING CHARGE

<https://www.wjgnet.com/bpg/gerinfo/242>

STEPS FOR SUBMITTING MANUSCRIPTS

<https://www.wjgnet.com/bpg/GerInfo/239>

ONLINE SUBMISSION

<https://www.f6publishing.com>



Endoscopic nasal surgery for mucocoele and pyogenic mucocoele of turbinate: Three case reports

Shu-Juan Sun, Ai-Ping Chen, Yu-Zhu Wan, Hong-Zhi Ji

Specialty type: Medicine, research and experimental

Provenance and peer review:

Unsolicited article; Externally peer reviewed

Peer-review model: Single blind

Peer-review report's scientific quality classification

Grade A (Excellent): A
Grade B (Very good): 0
Grade C (Good): C, C
Grade D (Fair): D
Grade E (Poor): 0

P-Reviewer: Abdullah B, Malaysia; Nagar SR, India; Trifan A, Romania

Received: August 3, 2022

Peer-review started: August 3, 2022

First decision: September 5, 2022

Revised: September 18, 2022

Accepted: October 20, 2022

Article in press: October 20, 2022

Published online: November 16, 2022



Shu-Juan Sun, Ai-Ping Chen, Yu-Zhu Wan, Hong-Zhi Ji, Department of Otolaryngology-Head and Neck Surgery, Shandong Provincial ENT Hospital, Shandong University, Jinan 250022, Shandong Province, China

Corresponding author: Ai-Ping Chen, MD, Chief Doctor, Department of Otolaryngology-Head and Neck Surgery, Shandong Provincial ENT Hospital, Shandong University, No. 4 Duanxing West Road, Jinan 250022, Shandong Province, China. apcmal@126.com

Abstract

BACKGROUND

Cases of turbinate mucocoele or pyogenic mucocoele are extremely rare. During nasal endoscopy, turbinate hypertrophy can be detected in patients with turbinate or pyogenic mucocoele. However, in many instances, differentiating between turbinate hypertrophy and turbinate mucocoele is difficult. Radiological examinations, such as computed tomography (CT) or magnetic resonance imaging (MRI), are essential for the accurate diagnosis of turbinate mucocoele. Herein, we report three cases of mucocoele or pyogenic mucocoele of turbinate, including their clinical presentation, imaging findings, and treatments, to help rhinologists understand this condition better.

CASE SUMMARY

Three cases of turbinate and pyogenic mucocoele were encountered in our hospital. In all patients, nasal obstruction and headache were the most common symptoms, and physical examination revealed hypertrophic turbinates. On CT scan, mucocoele appeared as non-enhancing, homogeneous, hypodense, well-defined, rounded, and expansile lesions. Meanwhile, MRI clearly illustrated the cystic nature of the lesion on T2 sequences. Two patients with inferior turbinate mucocoele underwent mucocoele lining removal, while the patient with pyogenic mucocoele underwent endoscopic middle turbinate marsupialization. The patients were followed up on the first, third, sixth month, and 1 year after discharge, and no complaints of headache and nasal congestion were reported during this period.

CONCLUSION

In conclusion, both CT and MRI are helpful in the diagnosis of turbinate or pyogenic mucocoele. Additionally, endoscopic nasal surgery is considered to be the most effective treatment method.

Key Words: Mucocoele; Pyogenic mucocoele; Inferior turbinate; Middle turbinate; Concha

bullosa; Case report

©The Author(s) 2022. Published by Baishideng Publishing Group Inc. All rights reserved.

Core Tip: Herein, we reported three cases of turbinate and pyogenic mucocoele, including their clinical presentation, imaging findings, and treatment approach. Concha bullosa was the basis of turbinate and pyogenic mucocoele. In our study, nasal obstruction and headaches were the most commonly reported symptoms, which was consistent with previous studies. Computed tomography and magnetic resonance imaging are essential for the accurate diagnosis of turbinate mucocoele. Surgical removal of turbinate mucocoele and pyogenic mucocoele is the recommended procedure.

Citation: Sun SJ, Chen AP, Wan YZ, Ji HZ. Endoscopic nasal surgery for mucocoele and pyogenic mucocoele of turbinate: Three case reports. *World J Clin Cases* 2022; 10(32): 12007-12014

URL: <https://www.wjgnet.com/2307-8960/full/v10/i32/12007.htm>

DOI: <https://dx.doi.org/10.12998/wjcc.v10.i32.12007>

INTRODUCTION

Three stair-like bones protrude from the nasal cavity, namely the inferior, middle, and superior turbinate. The sizes of these turbinates decrease by one-third consecutively; furthermore, the anterior position is successively retracted by one-third[1-3]. With the development of radiologic examinations, including computed tomography (CT) and magnetic resonance imaging (MRI), concha bullosa of the middle turbinate has been identified as a relatively common condition[3-7], whereas concha bullosa of the inferior turbinate is considered rare[8-10]. Furthermore, the development of mucocoele or pyogenic mucocoele from concha bullosa is considered extremely rare. Herein, we report three cases of turbinate mucocoele and pyogenic mucocoele, including their clinical presentation, imaging, and treatments. This article complies with the "Helsinki Medical Protocol and Ethics Declaration" and has been approved by the Shandong Provincial ENT Hospital Medical Ethics Committee (3701047593066).

CASE PRESENTATION

Chief complaints

Case 1: A 55-year-old female presenting with a chronic headache for more than five years was admitted on October 19, 2016. Over the past six months, the patient had more frequent and severe headaches with bilateral nasal congestion.

Case 2: A 58-year-old male with a 2-year history of bilateral nasal obstruction that was worse on the left side was admitted on December 25, 2019.

Case 3: A 50-year-old male with half a year history of right nasal congestion and a 1-wk history of nasal mass was transferred to our department on April 24, 2020.

History of present illness

Case 1: In the past five years, the patient experienced headaches without an obvious cause. Moreover, the headaches were more pronounced in the morning, mainly in bilateral temporal region, and occurred once a week on average. The patient was treated in the neurology department and underwent a CT scan of the brain, which revealed no obvious abnormalities. During the past six months, the degree and frequency of the patient's headache had increased significantly (2-3 times a week), requiring oral painkillers for relief; the headache was accompanied by bilateral nasal congestion, especially on the left side. The patient had no runny nose, sneezing, epistaxis, facial pain, or other discomforts.

Case 2: In the past two years, the patient experienced bilateral and intermittent nasal congestion, heavy nasal congestion on the left side at night, frequent mouth breathing at night, and snoring during sleep without an obvious cause. The patient also experienced an occasional headache and mild anosmia on the left side. However, he had no runny nose, sneezing, epistaxis, facial pain, or other discomforts.

Case 3: Since half a year, the patient had right and intermittent nasal congestion with no obvious cause; there was no runny nose, no epistaxis, no headache, and no sleep snoring. Furthermore, he had never been to the department of rhinology. The patient was hospitalized in our hospital due to vertigo 1 wk

prior and underwent an MRI of the head. The MRI revealed a mass on the inferior meatus' right posterior end, so he was transferred to the Department of Rhinology for further treatment.

History of past illness

Case 1: There was no specific past illness.

Case 2: History of right ophthalmoplegia for half a year and right secretory otitis media for two weeks.

Case 3: Meniere's disease for one week.

Personal and family history

All patients have no specific family history of illness.

Physical examination

Case 1: The left inferior turbinate was hypertrophic and proximal to the nasal septum, which was slightly deviated to the right.

Case 2: The left middle turbinate was enlarged, exceeding the lower 1/3rd of the inferior turbinate. Furthermore, the patient's nasal septum deviated to the left and his right middle ear had fluid effusion.

Case 3: Uplifting in the right posterior end of the inferior meatus and nasal septum deviation to the right.

Laboratory examinations

Case 1-3: All test indicators were in the normal range.

Imaging examinations

Case 1: CT scan revealed an oval-shaped opaque area with clear edges and thinner cortical bone, which was located in the left inferior turbinate, indicating the presence of a mucocoele (Figures 1A and B). Furthermore, T2-weighted MRI images showed a high signal for mucocoele fluid, and the edge of the mucocoele was clear (Figures 1C and D). In addition, sphenoid sinusitis was observed on both CT and MRI. Sagittal images of CT scans and MRIs were not provided.

Case 2: CT scan revealed an oval-shaped space-occupying lesion in the left middle turbinate, indicating the presence of a pyogenic mucocoele. The pyogenic mucocoele showed a homogeneous soft tissue density shadow with clear edges and thinner cortical bone (Figures 2A-C). In addition, right secretory otitis media was also found on the CT scan.

Case 3: CT scan of the sinus revealed a homogeneous soft-tissue density shadow lesion with clear bone edges in the right posterior end of the inferior meatus (Figures 3A-C). MRI revealed clear edges of the mucocoele and high homogeneous signals on T2 sequences (Figures 3D-F).

Histopathology

Case 1: The intact lining of the mucocoele tissue was stained with hematoxylin and eosin, revealing respiratory epithelium on microscopy (Figures 1I and J).

Case 2: The medial lamellae of the pyogenic mucocoele and middle turbinate tissue were stained with hematoxylin and eosin. On microscopy, the pyogenic mucocoele lining revealed hyperplasia and hypertrophy with various inflammatory cell infiltrations (Figures 2G and H). Immunohistochemical staining results were as follows: CK-pan(+), CgA(-), SyN(-), P53: 10% of cells were weakly positive (+); and the Ki index was approximately 5%.

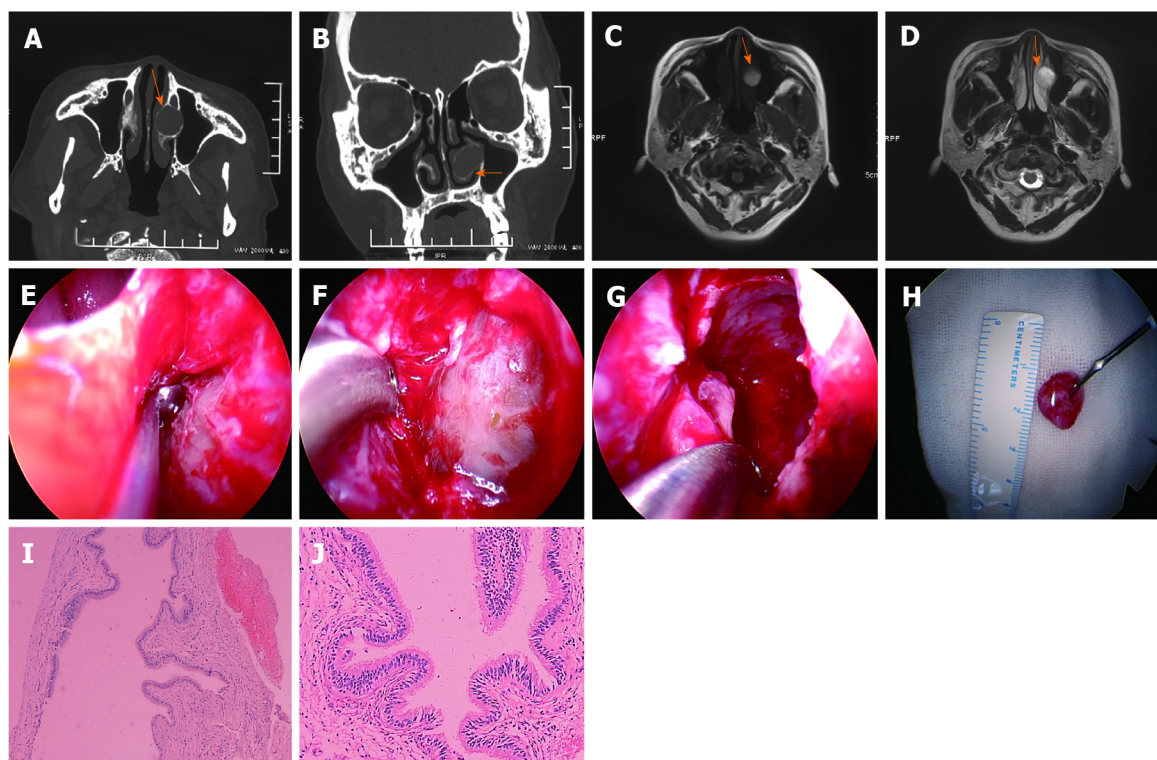
Case 3: The intact lining of mucocoele tissue was stained with hematoxylin and eosin, revealing respiratory epithelium on microscopy (Figures 3J and K). Immunohistochemical staining results were as follows: CK-pan(+), CK14 (-), P63 (-), SyN(-), and a Ki index was approximately 4%.

FINAL DIAGNOSIS

Case 1: Mucocoele of the inferior turbinate (left); chronic sinusitis.

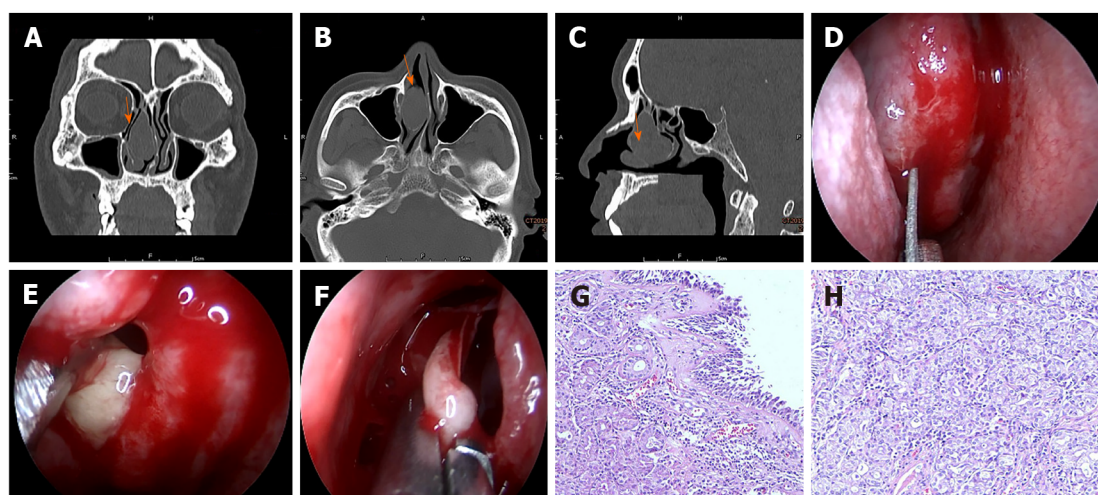
Case 2: Pyogenic mucocoele of the middle turbinate (left); deviation of the nasal septum; secretory otitis (right); ophthalmoplegia (right).

Case 3: Mucocoele of the inferior turbinate (right); Meniere's disease.



DOI: 10.12998/wjcc.v10.i32.12007 Copyright ©The Author(s) 2022.

Figure 1 Case 1: A 55-year-old woman with an interior turbinate mucocele. A: The inferior turbinate mucocele is shown on horizontal sinus computed tomography (CT); B: The inferior turbinate mucocele is shown on coronal sinus CT; C: The inferior turbinate mucocele is shown on T1 magnetic resonance imaging (MRI); D: The inferior turbinate mucocele is shown on T2 MRI; E: The bone wall of inferior turbinate mucocele is shown; F: The inferior turbinate mucocele lining is shown; G: The mucocele lining is completely removed; H: The inner layer diameter is about 1.2 cm; I: Hematoxylin and eosin (H&E) result of the mucocele lining is shown ($\times 40$); J: H&E result of the mucocele lining is shown ($\times 100$).

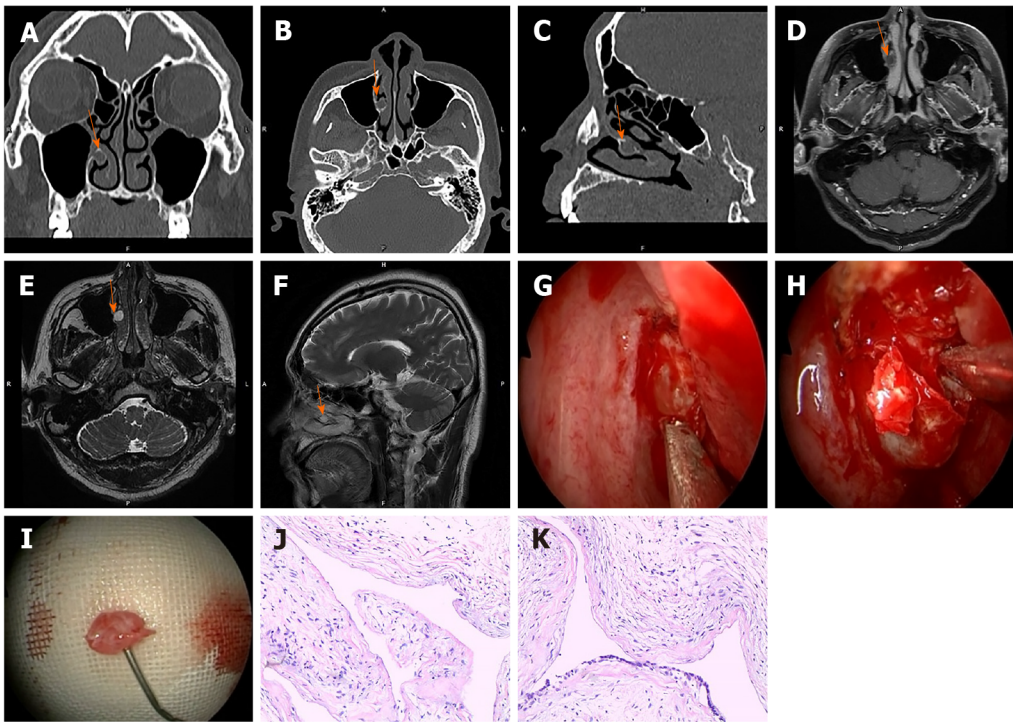


DOI: 10.12998/wjcc.v10.i32.12007 Copyright ©The Author(s) 2022.

Figure 2 Case 2: A 58-year-old man with a middle turbinate pyogenic mucocele. A: The middle turbinate pyogenic mucocele is shown on coronal sinus computed tomography (CT); B: The middle turbinate pyogenic mucocele is shown on horizontal sinus CT; C: The middle turbinate pyogenic mucocele is shown on sagittal sinus CT; D: The full-thickness longitudinal incision was made at the front end of the right middle turbinate; E: The white pus oozing out from middle turbinate pyogenic mucocele; F: The medial lamellae of the pyogenic mucocele are resected; G and H: Hematoxylin and eosin result of the medial lamellae of the pyogenic mucocele is shown ($\times 40$).

TREATMENT

Case 1: Following diagnosis, the patient underwent endoscopic surgery under general anesthesia. First, we made a horizontal incision in the inferior turbinate to separate the submucosal tissue until the bone wall of the mucocele. The bone wall was gently peeled off to expose the mucocele lining; the yellow



DOI: 10.12998/wjcc.v10.i32.12007 Copyright ©The Author(s) 2022.

Figure 3 Case 3: A 50-year-old man with an inferior turbinate mucocele. A: The inferior turbinate mucocele is shown on coronal sinus computed tomography (CT); B: The inferior turbinate mucocele is shown on horizontal sinus CT; C: The inferior turbinate mucocele is shown on sagittal sinus CT; D: The inferior turbinate mucocele is shown on T2 horizontal magnetic resonance imaging (MRI); E: The inferior turbinate mucocele is shown on T1 horizontal MRI; F: The inferior turbinate mucocele is shown on T2 coronal MRI; G: The bone wall of inferior turbinate mucocele is shown; H: The mucocele lining is completely removed; I: The inner layer diameter is about 0.8 cm; J and K: Hematoxylin and eosin result of the mucocele lining is shown ($\times 40$).

serous fluid was drawn using a syringe, and the mucocele lining was completely removed. Next, we injected normal saline into the dissociative mucocele lining, which showed an inner layer diameter of approximately 1.2 cm (Figures 1E-H). Finally, functional endoscopic sinus surgery on the sphenoid sinus was performed, and the patient recovered with no discomfort.

Case 2: Following diagnosis, the patient underwent endoscopic surgery under general anesthesia. First, a full-thickness longitudinal incision was made at the front end of the right middle turbinate, resulting in white pus oozing out. The medial lamellae of the pyogenic mucocele and the middle turbinate were then resected endoscopically (Figures 2D-F). Finally, in order to treat right ear fullness, the tympanic membrane of the right ear was incised, and a T-shaped tube was inserted. Postoperatively, the patient's nasal obstruction and ear fullness disappeared completely without discomfort.

Case 3: Following diagnosis, the patient underwent endoscopic surgery under general anesthesia. First, a U-shaped incision was made at the posterior end of the inferior meatus to separate the submucosal tissue from the bone wall of the mucocele. The front and inner bone walls were gently peeled off, yellow serous fluid was drawn using a syringe, and the mucocele lining was completely removed. Next, we injected normal saline into the dissociative mucocele lining, which showed an inner layer diameter of approximately 0.8 cm (Figures 3G-I). Septoplasty under nasal endoscopy was also performed simultaneously. Postoperatively, the patient's symptoms disappeared completely without discomfort.

OUTCOME AND FOLLOW-UP

Case 1: The patient was followed up on the first, third, sixth month, and 1 year after discharge, and no complaints of headache and nasal congestion were reported during this period.

Case 2: The patient was followed up on the first, third, sixth month, and 1 year after discharge, and no nasal congestion and purulent discharge were observed during this period.

Case 3: The patient was followed up on the first, third, sixth month, and 1 year after discharge, and no nasal congestion was observed during this period.

DISCUSSION

Mucocoele in other body parts present without a lining; however, turbinate mucocoele is known to have epithelial linings[11]. Herein, we report two cases of inferior turbinate mucocoele and one case of middle turbinate pyogenic mucocoele. Concha bullosa, which is an anatomic variant of a turbinate, is responsible for the formation of turbinate mucocoele and pyogenic mucocoele. Although it is very rare for the inferior turbinate to develop a concha bullosa[8,10], it is a relatively common anatomical variant in the middle turbinate, with an incidence varying from 14%-53.6%[8]. Moreover, concha bullosa is classified into three types, namely lamellar, bulbous, and extensive[12,13]. In this report, we did not find the etiology factors in mucocoele development from turbinate bullas.

Previous studies have indicated that either mechanical factors (history of trauma, surgery, nasal polyposis, or benign tumors) or inflammatory factors (infection, allergy, cystic fibrosis) are the main cause of mucocoele development[6,14,15]. Mechanical factors induce blockage of a minor salivary gland duct, resulting in the development of a mucocoele[6,7,12]. Inflammatory factors may also be the underlying cause of turbinate mucocoele, since local lymphocytes may contribute to the release of bone resorption factors[12], and prostaglandin (prostaglandin E2) and proinflammatory cytokines (interleukin-1 and tumor necrosis factor- α) could provoke osteoclastic bone resorption[16]. In the formation of turbinate mucocoele, local bone destruction, remodeling, and expansion occur simultaneously. Mucocoele that develops secondary to an infection is referred to as a pyogenic mucocoele, which is extremely rare[11,17]. Severe pyogenic mucocoele cases may present with intranasal mass, migraine, or orbital involvement[18,19].

Among our patients, nasal obstruction and headaches were the most commonly reported symptoms, which was consistent with previous studies[6,15]. Rhinorrhea is very rarely reported. However, some cases of nasal turbinate mucocoele were asymptomatic and diagnosed incidentally on nasal endoscopy and radiologic examinations[5,20]. In our patients, nasal endoscopy could reveal turbinate hypertrophy; however, it needs to be differentiated from turbinate hypertrophy, ethmoidal mucocoele, benign or malignant solid tumor (mesenchymal tumor or osseous tumor), meningoencephalocele, and dacryocyst mucocoele, based on the patient's symptoms and physical examination[6,12,14,21-23]. On CT scan, mucocoele presents as non-enhancing, homogeneous, hypodense, well-defined, rounded, and expansile lesions[8]. Meanwhile, MRI clearly demonstrates the cystic nature of the lesion on T2 sequences[6,12]. First, the malignant solid tumor was precluded because there was no necrosis, crusting, epistaxis, cervical lymphadenopathy, and bone destruction found by CT and MRI imaging[12]; based on pathological and immunohistochemical results, sinus tumors including neuroendocrine tumor[24,25], squamous cell carcinoma[26], and adenoid cystic carcinoma[27] could be excluded.

In our cases, CT images showed a homogeneous thin bony framework surrounding the turbinate mucocoele and thus ruled out ethmoid mucocoele and turbinate hypertrophy[22]. According to the CT image, the cyst did not continue with the dacryocyst and dura mater, and the turbinate mucous cyst was surrounded by bone, so meningoencephalocele and dacryocyst mucocoele were excluded[28,29]. Therefore, radiological examinations, such as CT or MRI, are essential for the accurate diagnosis of turbinate mucocoele[1,3,8,9].

It should be noted that pyogenic mucocoele cannot be differentiated from mucocoele on CT[6,30], which is important as the infection of a pyogenic mucocoele might spread to important surrounding anatomical structures, including the orbit and brain[26]. As such, turbinate mucocoele and pyogenic mucocoele must always be surgically removed regardless of symptomology[31].

Treatment modalities have changed with the advancement of endoscopic nasal surgery. Although the complete removal of the mucocoele lining was recommended in the past, most cases to date involve the marsupialization of lesions, wherein the lesion is reintegrated into the nasal cavity and re-ossification of the bony framework is observed several months after[12]. In our cases, the two patients with inferior turbinate mucocoele underwent complete removal, whereas the patient with a pyogenic mucocoele underwent marsupialization surgery. Surgical removal of turbinate mucocoele and pyogenic mucocoele is the recommended procedure, which usually relieves the patient from all symptoms.

CONCLUSION

In conclusion, turbinate mucocoele and pyogenic mucocoele from concha bullosa are rare. CT and MRI are both helpful for diagnosis, and endoscopic nasal surgery is the best treatment modality, which has shown good results and no recurrences.

ACKNOWLEDGEMENTS

We would like to thank all medical staff who provided data and supported the study.

FOOTNOTES

Author contributions: Sun SJ, Chen AP analyzed the data and drafted the manuscript; Sun SJ, Chen AP, Wan YZ, Ji HZ participated in the treatment of this patient; Chen AP supervised the treatment and finally decided on the manuscript; and all authors have read and approved the final version of the manuscript.

Informed consent statement: Informed written consent was obtained from the patient for publication of this report and any accompanying images.

Conflict-of-interest statement: All the authors report no relevant conflicts of interest for this article.

CARE Checklist (2016) statement: The authors have read the CARE Checklist (2016), and the manuscript was prepared and revised according to the CARE Checklist (2016).

Open-Access: This article is an open-access article that was selected by an in-house editor and fully peer-reviewed by external reviewers. It is distributed in accordance with the Creative Commons Attribution NonCommercial (CC BY-NC 4.0) license, which permits others to distribute, remix, adapt, build upon this work non-commercially, and license their derivative works on different terms, provided the original work is properly cited and the use is non-commercial. See: <https://creativecommons.org/licenses/by-nc/4.0/>

Country/Territory of origin: China

ORCID number: Shu-Juan Sun 0000-0001-5734-8217; Ai-Ping Chen 0000-0002-2352-4013; Yu-Zhu Wan 0000-0001-6184-5902.

S-Editor: Wang JJ

L-Editor: A

P-Editor: Wang JJ

REFERENCES

- Downs BW. The Inferior Turbinate in Rhinoplasty. *Facial Plast Surg Clin North Am* 2017; **25**: 171-177 [PMID: 28340648 DOI: 10.1016/j.fsc.2016.12.003]
- Smith DH, Brook CD, Virani S, Platt MP. The inferior turbinate: An autonomic organ. *Am J Otolaryngol* 2018; **39**: 771-775 [PMID: 30193745 DOI: 10.1016/j.amjoto.2018.08.009]
- Brescia G, Contro G, Frascioni S, Marioni G. Middle turbinate handling during ESS. Our experience. *Am J Otolaryngol* 2021; **42**: 102980 [PMID: 33621766 DOI: 10.1016/j.amjoto.2021.102980]
- Braun H, Stammberger H. Pneumatization of turbinates. *Laryngoscope* 2003; **113**: 668-672 [PMID: 12671426 DOI: 10.1097/00005537-200304000-00016]
- Pittore B, Al Safi W, Jarvis SJ. Concha bullosa of the inferior turbinate: an unusual cause of nasal obstruction. *Acta Otorhinolaryngol Ital* 2011; **31**: 47-49 [PMID: 21808464]
- Khalife S, Marchica C, Zawawi F, Daniel SJ, Manoukian JJ, Tewfik MA. Concha bullosa mucocele: A case series and review of the literature. *Allergy Rhinol (Providence)* 2016; **7**: 233-243 [PMID: 28683251 DOI: 10.2500/ar.2016.7.0179]
- Koo SK, Moon JS, Jung SH, Mun MJ. A case of bilateral inferior concha bullosa connecting to maxillary sinus. *Braz J Otorhinolaryngol* 2018; **84**: 526-528 [PMID: 27133909 DOI: 10.1016/j.bjorl.2016.01.005]
- Lee DH, Lim SC. Inferior Turbinate Mucocele. *J Craniofac Surg* 2021; **32**: 1638-1640 [PMID: 33852517 DOI: 10.1097/SCS.00000000000007583]
- Lee YW, Kim YM. Mucocele of the inferior turbinate: a case report. *Br J Oral Maxillofac Surg* 2016; **54**: 1121-1122 [PMID: 27745786 DOI: 10.1016/j.bjoms.2016.09.015]
- Al-Sebeih KH, Bu-Abbas MH. Concha bullosa mucocele and mucopyocele: a series of 4 cases. *Ear Nose Throat J* 2014; **93**: 28-31 [PMID: 24452890]
- Toledano A, Herráiz C, Mate A, Plaza G, Aparicio JM, De Los Santos G, Galindo AN. Mucocele of the middle turbinate: a case report. *Otolaryngol Head Neck Surg* 2002; **126**: 442-444 [PMID: 11997793 DOI: 10.1067/mhn.2002.123346]
- Eloy P, Heylen G, Minavnina J, Ouattassi N. Middle turbinate primary mucocele in a child masquerading as a nasal tumour. *B-ENT* 2016; **12**: 159-163 [PMID: 29553623]
- Bolger WE, Butzin CA, Parsons DS. Paranasal sinus bony anatomic variations and mucosal abnormalities: CT analysis for endoscopic sinus surgery. *Laryngoscope* 1991; **101**: 56-64 [PMID: 1984551 DOI: 10.1288/00005537-199101000-00010]
- Lee JH, Hong SL, Roh HJ, Cho KS. Concha bullosa mucocele with orbital invasion and secondary frontal sinusitis: a case report. *BMC Res Notes* 2013; **6**: 501 [PMID: 24299615 DOI: 10.1186/1756-0500-6-501]
- Pinto JA, Cintra PP, de Marqui AC, Perfeito DJ, Ferreira RD, da Silva RH. [Mucocele of the middle turbinate: a case report]. *Braz J Otorhinolaryngol* 2005; **71**: 378-381 [PMID: 16446946 DOI: 10.1016/s1808-8694(15)31340-9]
- Lund VJ, Henderson B, Song Y. Involvement of cytokines and vascular adhesion receptors in the pathology of fronto-ethmoidal mucoceles. *Acta Otolaryngol* 1993; **113**: 540-546 [PMID: 7691023 DOI: 10.3109/00016489309135860]
- Cinar U, Yigit O, Uslu B, Alkan S. Pyocele of the middle turbinate: a case report. *Kulak Burun Bogaz Ihtis Derg* 2004; **12**: 35-38 [PMID: 16010095]
- Marianowski R, Farragi M, Zerah M, Brunelle F, Manach Y. Subdural empyema complicating a concha bullosa pyocele.

- Int J Pediatr Otorhinolaryngol* 2002; **65**: 249-252 [PMID: [12242141](#) DOI: [10.1016/s0165-5876\(02\)00174-x](#)]
- 19 **Yuca K**, Kiris M, Kiroglu AF, Bayram I, Cankaya H. A case of concha pyocoele (concha bullosa mucocoele) mimicking intranasal mass. *B-ENT* 2008; **4**: 25-27 [PMID: [18500018](#)]
- 20 **Cankaya H**, Egeli E, Kutluhan A, Kiriş M. Pneumatization of the concha inferior as a cause of nasal obstruction. *Rhinology* 2001; **39**: 109-111 [PMID: [11486435](#)]
- 21 **Ozcan KM**, Selcuk A, Ozcan I, Akdogan O, Dere H. Anatomical variations of nasal turbinates. *J Craniofac Surg* 2008; **19**: 1678-1682 [PMID: [19098580](#) DOI: [10.1097/SCS.0b013e318188a29d](#)]
- 22 **Okuyucu S**, Akoğlu E, Dağlı AS. Concha bullosa pyocoele. *Eur Arch Otorhinolaryngol* 2008; **265**: 373-375 [PMID: [17882444](#) DOI: [10.1007/s00405-007-0448-0](#)]
- 23 **Abdel-Aziz M**. Mucopyocoele of the concha bullosa presenting as a large nasal mass. *J Craniofac Surg* 2011; **22**: 1141-1142 [PMID: [21586971](#) DOI: [10.1097/SCS.0b013e318210b95a](#)]
- 24 **Modlin IM**, Kidd M, Falconi M, Filosso PL, Frilling A, Malczewska A, Toumpanakis C, Valk G, Pacak K, Bodei L, Öberg KE. A multigenomic liquid biopsy biomarker for neuroendocrine tumor disease outperforms CgA and has surgical and clinical utility. *Ann Oncol* 2021; **32**: 1425-1433 [PMID: [34390828](#) DOI: [10.1016/j.annonc.2021.08.1746](#)]
- 25 **Yu L**, Suye S, Huang R, Liang Q, Fu C. Expression and clinical significance of a new neuroendocrine marker secretagogin in cervical neuroendocrine carcinoma. *J Clin Pathol* 2021; **74**: 787-795 [PMID: [33060116](#) DOI: [10.1136/jclinpath-2020-206889](#)]
- 26 **Smirnov A**, Lena AM, Cappello A, Panatta E, Anemona L, Bischetti S, Annicchiarico-Petruzzelli M, Mauriello A, Melino G, Candi E. ZNF185 is a p63 target gene critical for epidermal differentiation and squamous cell carcinoma development. *Oncogene* 2019; **38**: 1625-1638 [PMID: [30337687](#) DOI: [10.1038/s41388-018-0509-4](#)]
- 27 **Huang Z**, Pan J, Chen J, Wu S, Wu T, Ye H, Zhang H, Nie X, Huang C. Multicentre clinicopathological study of adenoid cystic carcinoma: A report of 296 cases. *Cancer Med* 2021; **10**: 1120-1127 [PMID: [33449415](#) DOI: [10.1002/cam4.3707](#)]
- 28 **Kapitanov DN**, Shelesko EV, Potapov AA, Kravchuk AD, Zinkevich DN, Nersesyan MV, Satanin LA, Sakharov AV, Danilov GV. [Endoscopic endonasal diagnosis and treatment of skull base meningoencephalocele]. *Zh Vopr Neurokhir Im N N Burdenko* 2017; **81**: 38-47 [PMID: [28524124](#) DOI: [10.17116/neiro201781238-47](#)]
- 29 **Pirola F**, Spriano G, Ferrel F, Russo E, Di Bari M, Giannitto C, De Virgilio A, Mercante G, Vinciguerra P, Di Maria A, Malvezzi L. Clinical outcome and quality of life of lacrimal sac mucocoele treated via endoscopic posterior approach. *Am J Otolaryngol* 2022; **43**: 103244 [PMID: [34563801](#) DOI: [10.1016/j.amjoto.2021.103244](#)]
- 30 **Göçmen H**, Oğuz H, Ceylan K, Samim E. Infected inferior turbinate pneumatization. *Eur Arch Otorhinolaryngol* 2005; **262**: 979-981 [PMID: [16328411](#) DOI: [10.1007/s00405-004-0837-6](#)]
- 31 **Fuglsang M**, Sørensen LH, Petersen KB, Bille J. 10-year-old with concha bullosa pyogenic mucocoele. *BMJ Case Rep* 2018; **2018** [PMID: [29764849](#) DOI: [10.1136/bcr-2018-224417](#)]



Published by **Baishideng Publishing Group Inc**
7041 Koll Center Parkway, Suite 160, Pleasanton, CA 94566, USA

Telephone: +1-925-3991568

E-mail: bpgoffice@wjgnet.com

Help Desk: <https://www.f6publishing.com/helpdesk>

<https://www.wjgnet.com>

