

World Journal of *Clinical Cases*

World J Clin Cases 2023 April 16; 11(11): 2363-2581



Contents

Thrice Monthly Volume 11 Number 11 April 16, 2023

REVIEW

- 2363 Presbyphagia: Dysphagia in the elderly
Feng HY, Zhang PP, Wang XW

MINIREVIEWS

- 2374 Narrative minireview of the spatial epidemiology of substance use disorder in the United States: Who is at risk and where?
Cuadros DF, Branscum AJ, Moreno CM, MacKinnon NJ
- 2386 Pyroptosis and its role in cancer
Liu SW, Song WJ, Ma GK, Wang H, Yang L
- 2396 Platelet rich fibrin is not a barrier membrane! Or is it?
Agrawal AA
- 2405 Advances in translational therapy for locally advanced gastric cancer
Zhao K, Na Y, Xu HM

ORIGINAL ARTICLE

Retrospective Study

- 2412 Study of pathogenic genes in a pedigree with familial dilated cardiomyopathy
Zhang XR, Ren H, Yao F, Liu Y, Song CL
- 2423 Classification of hepatobiliary scintigraphy patterns in segmented gallbladder according to anatomical discordance
Lee YC, Jung WS, Lee CH, Kim SH, Lee SO
- 2435 Optimal laboratory testing protocol for patients with acne taking oral isotretinoin
Park YJ, Shin HY, Choi WK, Lee AY, Lee SH, Hong JS

Observational Study

- 2443 Etiology analysis for term newborns with severe hyperbilirubinemia in eastern Guangdong of China
Xu JX, Lin F, Wu YH, Chen ZK, Ma YB, Yang LY

CASE REPORT

- 2452 Aicardi-Goutières syndrome type 7 in a Chinese child: A case report
Lin SZ, Yang JJ, Xie TL, Li JY, Ma JQ, Wu S, Wang N, Wang YJ

- 2457** Allergic bronchopulmonary aspergillosis with marked peripheral blood eosinophilia and pulmonary eosinophilia: A case report
Zhang XX, Zhou R, Liu C, Yang J, Pan ZH, Wu CC, Li QY
- 2464** Late presentation of dural tears: Two case reports and review of literature
Xu C, Dong RP, Cheng XL, Zhao JW
- 2474** Difficult-to-treat rheumatoid arthritis treated with Abatacept combined with Baricitinib: A case report
Qi JP, Jiang H, Wu T, Zhang Y, Huang W, Li YX, Wang J, Zhang J, Ying ZH
- 2482** Anesthesia management in a pediatric patient with complicatedly difficult airway: A case report
Chen JX, Shi XL, Liang CS, Ma XG, Xu L
- 2489** Intracranial large artery embolism due to carotid thrombosis caused by a neck massager: A case report
Pan J, Wang JW, Cai XF, Lu KF, Wang ZZ, Guo SY
- 2496** Intraductal papillary mucinous neoplasm originating from a jejunal heterotopic pancreas: A case report
Huang JH, Guo W, Liu Z
- 2502** Application of endoscopic retrograde cholangiopancreatography for treatment of obstructive jaundice after hepatoblastoma surgery: A case report
Shu J, Yang H, Yang J, Bian HQ, Wang X
- 2510** Total removal of a large esophageal schwannoma by submucosal tunneling endoscopic resection: A case report and review of literature
Mu YZ, Zhang Q, Zhao J, Liu Y, Kong LW, Ding ZX
- 2521** SMARCA4-deficient undifferentiated thoracic tumor: A case report
Kwon HJ, Jang MH
- 2528** Prostate-specific antigen reduction after capecitabine plus oxaliplatin chemotherapy: A case report
Zou Q, Shen RL, Guo X, Tang CY
- 2535** Bilateral carpal tunnel syndrome and motor dysfunction caused by gout and type 2 diabetes: A case report
Zhang GF, Rong CM, Li W, Wei BL, Han MT, Han QL
- 2541** Pregnancy complicated by juxtaglomerular cell tumor of the kidney: A case report
Fu X, Deng G, Wang K, Shao C, Xie LP
- 2549** Successful treatment of lichen amyloidosis coexisting with atopic dermatitis by dupilumab: Four case reports
Zhu Q, Gao BQ, Zhang JF, Shi LP, Zhang GQ
- 2559** Successful treatment of breast metastasis from primary transverse colon cancer: A case report
Jiao X, Xing FZ, Zhai MM, Sun P

- 2567** Different endodontic treatments induced root development of two nonvital immature teeth in the same patient: A case report
Chai R, Yang X, Zhang AS
- 2576** Autoimmune encephalitis after surgery for appendiceal cancer: A case report
Mao YH, Li L, Wen LM, Qin JM, Yang YL, Wang L, Wang FR, Zhao YZ

ABOUT COVER

Editorial Board Member of *World Journal of Clinical Cases*, Farooq Shahzad, FACS, MBBS, MS, Assistant Professor, Plastic Surgery Service, Department of Surgery, Memorial Sloan-Kettering Cancer Center, New York, NY 10065, United States. fooqs@hotmail.com

AIMS AND SCOPE

The primary aim of *World Journal of Clinical Cases* (WJCC, *World J Clin Cases*) is to provide scholars and readers from various fields of clinical medicine with a platform to publish high-quality clinical research articles and communicate their research findings online.

WJCC mainly publishes articles reporting research results and findings obtained in the field of clinical medicine and covering a wide range of topics, including case control studies, retrospective cohort studies, retrospective studies, clinical trials studies, observational studies, prospective studies, randomized controlled trials, randomized clinical trials, systematic reviews, meta-analysis, and case reports.

INDEXING/ABSTRACTING

The WJCC is now abstracted and indexed in Science Citation Index Expanded (SCIE, also known as SciSearch®), Journal Citation Reports/Science Edition, Current Contents®/Clinical Medicine, PubMed, PubMed Central, Scopus, Reference Citation Analysis, China National Knowledge Infrastructure, China Science and Technology Journal Database, and Superstar Journals Database. The 2022 Edition of Journal Citation Reports® cites the 2021 impact factor (IF) for WJCC as 1.534; IF without journal self cites: 1.491; 5-year IF: 1.599; Journal Citation Indicator: 0.28; Ranking: 135 among 172 journals in medicine, general and internal; and Quartile category: Q4. The WJCC's CiteScore for 2021 is 1.2 and Scopus CiteScore rank 2021: General Medicine is 443/826.

RESPONSIBLE EDITORS FOR THIS ISSUE

Production Editor: Hua-Ge Yin; Production Department Director: Xiang Li; Editorial Office Director: Jin-Lei Wang.

NAME OF JOURNAL

World Journal of Clinical Cases

ISSN

ISSN 2307-8960 (online)

LAUNCH DATE

April 16, 2013

FREQUENCY

Thrice Monthly

EDITORS-IN-CHIEF

Bao-Gan Peng, Jerzy Tadeusz Chudek, George Kontogeorgos, Maurizio Serati, Ja Hyeon Ku

EDITORIAL BOARD MEMBERS

<https://www.wjnet.com/2307-8960/editorialboard.htm>

PUBLICATION DATE

April 16, 2023

COPYRIGHT

© 2023 Baishideng Publishing Group Inc

INSTRUCTIONS TO AUTHORS

<https://www.wjnet.com/bpg/gerinfo/204>

GUIDELINES FOR ETHICS DOCUMENTS

<https://www.wjnet.com/bpg/GerInfo/287>

GUIDELINES FOR NON-NATIVE SPEAKERS OF ENGLISH

<https://www.wjnet.com/bpg/gerinfo/240>

PUBLICATION ETHICS

<https://www.wjnet.com/bpg/GerInfo/288>

PUBLICATION MISCONDUCT

<https://www.wjnet.com/bpg/gerinfo/208>

ARTICLE PROCESSING CHARGE

<https://www.wjnet.com/bpg/gerinfo/242>

STEPS FOR SUBMITTING MANUSCRIPTS

<https://www.wjnet.com/bpg/GerInfo/239>

ONLINE SUBMISSION

<https://www.f6publishing.com>



Difficult-to-treat rheumatoid arthritis treated with Abatacept combined with Baricitinib: A case report

Jia-Ping Qi, Huan Jiang, Teng Wu, Yuan Zhang, Wei Huang, Yi-Xuan Li, Jing Wang, Ju Zhang, Zhen-Hua Ying

Specialty type: Medicine, research and experimental

Provenance and peer review: Unsolicited article; Externally peer reviewed.

Peer-review model: Single blind

Peer-review report's scientific quality classification

Grade A (Excellent): 0
Grade B (Very good): B
Grade C (Good): C
Grade D (Fair): 0
Grade E (Poor): 0

P-Reviewer: Dauey K, Kazakhstan; Primadhi RA, Indonesia

Received: October 20, 2022

Peer-review started: October 20, 2022

First decision: February 7, 2023

Revised: February 19, 2023

Accepted: March 20, 2023

Article in press: March 20, 2023

Published online: April 16, 2023



Jia-Ping Qi, Yuan Zhang, Zhen-Hua Ying, Graduate School, Bengbu Medical College, Bengbu 233030, Anhui Province, China

Jia-Ping Qi, Huan Jiang, Teng Wu, Yuan Zhang, Wei Huang, Yi-Xuan Li, Jing Wang, Ju Zhang, Zhen-Hua Ying, Center for General Practice Medicine, Department of Rheumatology and Immunology, Zhejiang Provincial People's Hospital, Affiliated People's Hospital, Hangzhou 310000, Zhejiang Province, China

Jia-Ping Qi, Huan Jiang, Teng Wu, Yuan Zhang, Wei Huang, Yi-Xuan Li, Jing Wang, Ju Zhang, Zhen-Hua Ying, Zhejiang Provincial Key Laboratory of Traditional Chinese Medicine Cultivation for Arthritis Diagnosis and Treatment, Zhejiang Provincial People's Hospital, Affiliated People's Hospital, Hangzhou Medical College, Hangzhou 310000, Zhejiang Province, China

Huan Jiang, Teng Wu, Yi-Xuan Li, Jing Wang, Zhen-Hua Ying, The Second Clinical Medical College, Zhejiang Chinese Medical University, Hangzhou 310000, Zhejiang Province, China

Corresponding author: Zhen-Hua Ying, MM, Chief Doctor, Professor, Teacher, Center for General Practice Medicine, Department of Rheumatology and Immunology, Zhejiang Provincial People's Hospital, Affiliated People's Hospital, No. 158 Shangtang Road, Hangzhou 310000, Zhejiang Province, China. yingzh2021@163.com

Abstract

BACKGROUND

Sporadic cases of rheumatoid arthritis (RA) due to unsatisfactory responses to Abatacept (ABT) have been reported; however, the rescue therapy has not been finalized. Here, we present a case with difficult-to-treat RA (D2T RA) that was resistant to either a single ABT or a Janus kinase (JAK) inhibitor (Tofacitinib), but improved with a combination of ABT and JAK inhibitor (Baricitinib, BAT).

CASE SUMMARY

A 46-year-old Chinese woman who had RA for ten years that was resistant to Tocilizumab, Etanercept, Adalimumab, and ABT. According to the European League Against Rheumatism definition, the patient was diagnosed with D2T RA. It was then improved with a combination of ABT and a JAK inhibitor BAT.

CONCLUSION

ABT combined with BAT may be an acceptable strategy for treating D2T RA.

Key Words: Difficult-to-treat rheumatoid arthritis; Abatacept; Baricitinib; Combination therapy; Case report

©The Author(s) 2023. Published by Baishideng Publishing Group Inc. All rights reserved.

Core Tip: Although the combined use of Abatacept (ABT) and Janus kinase (JAK) inhibitors is not recommended in rheumatoid arthritis (RA) treatment guidelines, inflammatory cytokines have been found to compensate for the inhibitory effect of ABT on co-stimulatory signals, activate T-lymphocytes through the JAK/ Signal Transducers and Activators of Transcription pathway, and promote the inflammatory response. In the treatment of this patient, Baricitinib, as a JAK inhibitor, combined with ABT can be used as a rescue treatment for difficult-to-treat RA, especially for patients with poor responses to single ABT treatment.

Citation: Qi JP, Jiang H, Wu T, Zhang Y, Huang W, Li YX, Wang J, Zhang J, Ying ZH. Difficult-to-treat rheumatoid arthritis treated with Abatacept combined with Baricitinib: A case report. *World J Clin Cases* 2023; 11(11): 2474-2481

URL: <https://www.wjgnet.com/2307-8960/full/v11/i11/2474.htm>

DOI: <https://dx.doi.org/10.12998/wjcc.v11.i11.2474>

INTRODUCTION

New disease-modifying anti-rheumatic drugs (DMARDs) have drastically improved rheumatoid arthritis (RA) patients' quality of life[1]. However, 5%-20% of patients continue to show symptoms and clinical signs of autoimmune inflammatory activity despite the continuous treatment with various conventional synthetic, targeted synthetic, and biological DMARDs (cs, ts, and bDMARDs). Such patients are considered as difficult-to-treat RA (D2T RA) population[2,3], according to the European League Against Rheumatism (EULAR) definition of D2T RA (see Table 1 for a complete definition)[4]. D2T RA patients were found to have lower physical function and quality of life, along with substantial fatigue and discomfort than non-D2T RA patients, implying a larger illness load, more significant impairment effects, and early mortality[5]. The current treatment of D2T RA involves a repeated trial process of switching to another b/csDMARD after the first fails, as there are no specific management guidelines for these patients[6]. Therefore, establishing new treatment modalities for this population has become a top priority.

Compared to other b/tsDMARDs, Abatacept (ABT), a novel T-cell costimulation modulator, created compelling clinical benefits and security in patients who did not respond to anti-tumor necrosis factor- α or methotrexate treatment[7,8]. However, ABT is not effective in all patients[9]. The poor response to ABT in D2T RA patients may be linked to inflammatory cytokines; however, the exact pathogenesis remains unknown. According to recent reports, combination therapy with other DMARDs is a more effective management option for patients who do not significantly respond to ABT[9]. Janus kinase (JAK) inhibitors are currently the routine therapy for RA patients on whom csDMARDs are ineffective, and are widely used as an alternative to biologics in patients with no risk factors for venous thromboembolism. Combination therapy has been demonstrated to be clinically and radiologically superior to monotherapy[10]. Although the use of ABT and JAK inhibitors in combination is not suggested in the RA treatment guidelines, it is considered a preliminary experiment because various biologics have been attempted in the past with no notable outcomes. Herein, we present a report of a patient who did not respond to multiple bDMARDs (Tocilizumab, Etanercept, Adalimumab, and ABT) and was successfully treated with a combination therapy of ABT and Baricitinib (BAT).

CASE PRESENTATION

Chief complaints

A 46-year-old woman presented with arthralgia for half a month.

History of present illness

Two years ago, following knee arthroplasty, she experienced profound weariness and stiffness in the morning, with swelling and soreness of several peripheral joints. Quickly, she had trouble moving, and was unable to crouch or rise without assistance. Subsequently, she was admitted to Zhejiang Provincial People's Hospital on October 1, 2020.

Table 1 European League Against Rheumatism definition of difficult-to-treat rheumatoid arthritis**EULAR definition of D2T RA**

1 Treatment according to the recommendations of the European League against rheumatism, treatment failure \geq two biological / tsDMARDs (with different mechanism)¹ after csDMARD treatment failure (unless there are contraindications)².

2 Signs indicating active/progressive diseases are defined as \geq one of them:

- (1) At least moderate disease activity (based on validated composite indicators, including joint counts, such as DAS28-ESR > 3.2 or CDAI > 10).
- (2) Signs (including acute phase reactants and imaging) and / or symptoms indicating active disease (joint related or other).
- (3) No reduction in glucocorticoid treatment (less than 7.5 mg / day prednisone or equivalent).
- (4) Rapid radiographic progress (with or without signs of active disease)³.
- (5) According to the above criteria, the disease is well controlled, but there are still RA symptoms, resulting in a decline in the quality of life.

3 Rheumatologists and/or patients believe that there are problems in the management of signs and/or symptoms.

All three standards need to appear in D2T RA.

¹Unless limited by treatment opportunities due to socioeconomic factors.

²If csDMARD treatment is disabled, it is sufficient that \geq two biological/tsDMARDs has a different mechanism of action.

³Rapid progress in radiographic: the change of van der Heijde-modified Sharp score \geq five points in a year.

EULAR: European League Against Rheumatism; D2T RA: Difficult-to-treat rheumatoid arthritis; CDAI: Clinical disease activity index; cs: Conventional synthesis; DAS28-ESR: The disease activity score of 28 joints was evaluated by ESR; DMARD: Disease-modifying antirheumatic drug; RA: Rheumatoid arthritis; ts; Targeted synthetic.

History of past illness

The 46-year-old Hangzhou woman developed RA when she was 36 years old. After more than one year of treatment, the disease was nearly controlled.

Personal and family history

The patient had a joint replacement two years ago without a family history.

Physical examination

A body temperature of 37.2°C, a blood pressure of 117/85 mmHg, a heart rate of 83 beats/min, and a respiratory rate of 19 times/min were noted. Swollen and painful joints on both sides of the knuckles, proximal interphalangeal joints, wrist joints and left knee joints.

Laboratory examinations

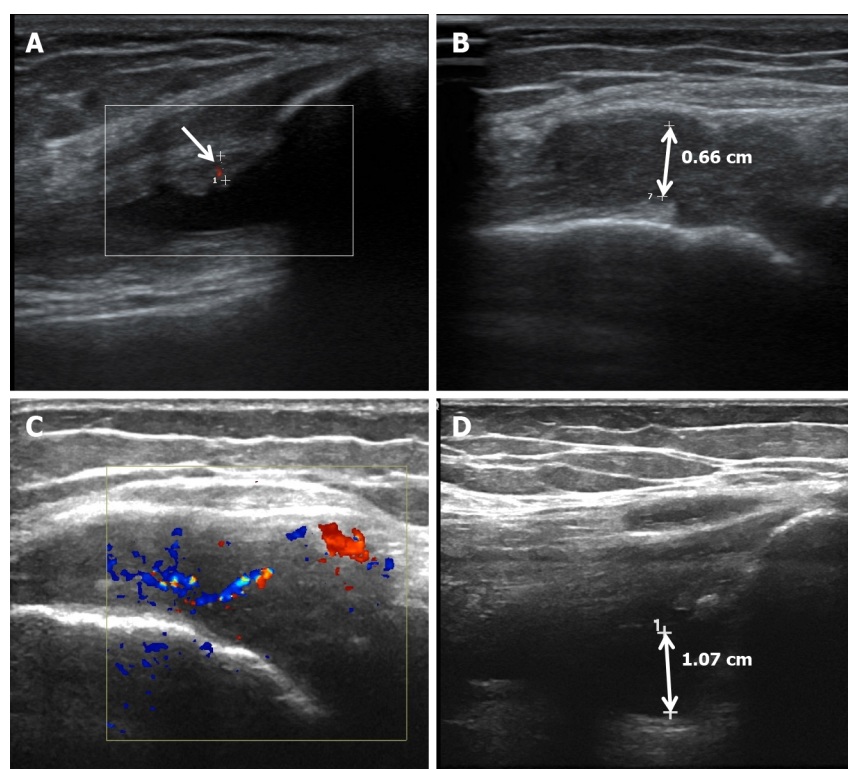
On presentation to the clinician, the patient had elevated erythrocyte sedimentation rate (ESR) and C-reactive protein (CRP) levels of 118 mm/h (normal range; 0-26 mm/h) and 63.8 mg/L (normal range; 0-8 mg/L), respectively. The levels of rheumatoid factor and anti-cyclic citrullinated peptide antibody increased to 1590.0 IU/mL (normal range; 0-20 IU/mL) and 1351.6 U/mL (normal range; 0-25 U/mL), respectively. Serum immune complex levels, anti-neutrophil cytoplasmic antibody, anti-Sjogren syndrome A antibody (anti-SS-A) and anti-SS-B titers were also significantly increased. Clinical symptoms and serological tests were used to diagnose RA. The disease activity score of 28 joints with ESR (DAS28-ESR) was 6.05 (DAS28-ESR ≤ 2.6 , remission; $2.6 < \text{DAS28-ESR} \leq 3.2$, mild activity; $3.2 < \text{DAS28-ESR} \leq 5.1$, moderate activity, and $\text{DAS28-ESR} > 5.1$, severe activity).

Imaging examinations

Ultrasonic studies revealed a thickened synovial membrane, suprapatellar bursa effusion, and degenerative changes in the left knee joint (Figure 1A and B).

FINAL DIAGNOSIS

Subsequently, the patient was treated with ABT for 3 mo. Although the joint swelling and tenderness improved slightly, the DAS28-ESR decreased from 5.1 to 4.12, and ESR and CRP dropped to 89 mm/h and 64.5 mg/L, respectively, the disease was still in remission. The ultrasound test revealed the development of synovitis and pannus in the articular cavity of the left knee, and blood flow in the articular cavity was more abundant than before (Figure 1C and D). Difficulty in walking, squatting, and upright standing were still present. Comorbidities such as ankylosing spondylitis, psoriatic arthritis, osteoarthritis, lupus, and arthritis caused by other causes were excluded based on laboratory data, joint ultrasonography, and clinical picture. According to the EULAR definition of D2T RA, it was diagnosed



DOI: 10.12998/wjcc.v11.i11.2474 Copyright ©The Author(s) 2023.

Figure 1 Doppler flow imaging and ultrasonographic pictures. A: Doppler flow imaging shows a few punctate blood flow signals in articular cavity (arrow); B: Ultrasonographic pictures showed that the synovial membrane of the joint was thickened, about 0.66 cm at the thickest point (bidirectional arrow); C: Doppler flow imaging shows abundant blood flow signal in articular cavity. D: Ultrasonographic pictures showed that the synovial membrane of the joint was thickened, about 1.07 cm at the thickest part (bidirectional arrow).

as D2T RA.

TREATMENT

Thereafter, BAT was introduced, considering that the combination of these medications may be successful if the patients do not have any contraindications, such as TB infection or viral hepatitis. After one month, the patient's DAS28-ESR score was 4.08, and ESR and CRP level were 76 mm/h and 10.8 mg/L, respectively. All three indicators constantly remained below this level for the next 3 mo. Furthermore, when compared to the prior time, the ultrasound test revealed that the development of synovitis and pannus in the left knee joint cavity had improved, and blood flow signals were significantly reduced [2021-7 (Figure 2A), 2021-10 (Figure 2B) and 2022-1 (Figure 2C) joint CDFI comparison]. During treatment, no significant side effects were observed.

OUTCOME AND FOLLOW-UP

The patient's ESR and CRP levels were within the normal thresholds (26 mm/h and 3.5 mg/L, respectively) after 3 mo, and DAS28-ESR was 3.26, indicating low-level activity. Moreover, the patients' autonomous walking, squatting, and standing abilities were significantly improved compared to before combination therapy. Entire clinical process and pharmacological dose of the patient is depicted in Figure 2. With the addition of BAT, the patient received effective and continuous treatment for the first time.

DISCUSSION

The pathophysiology of D2T RA is complex, and it is currently categorized into two groups: (1) Multidrug resistance caused by autoimmune disorders and environmental factors in RA patients, such as smoking, pharmacogenetics, or drug immunogenicity; and (2) Difficulties with intensive treatment,

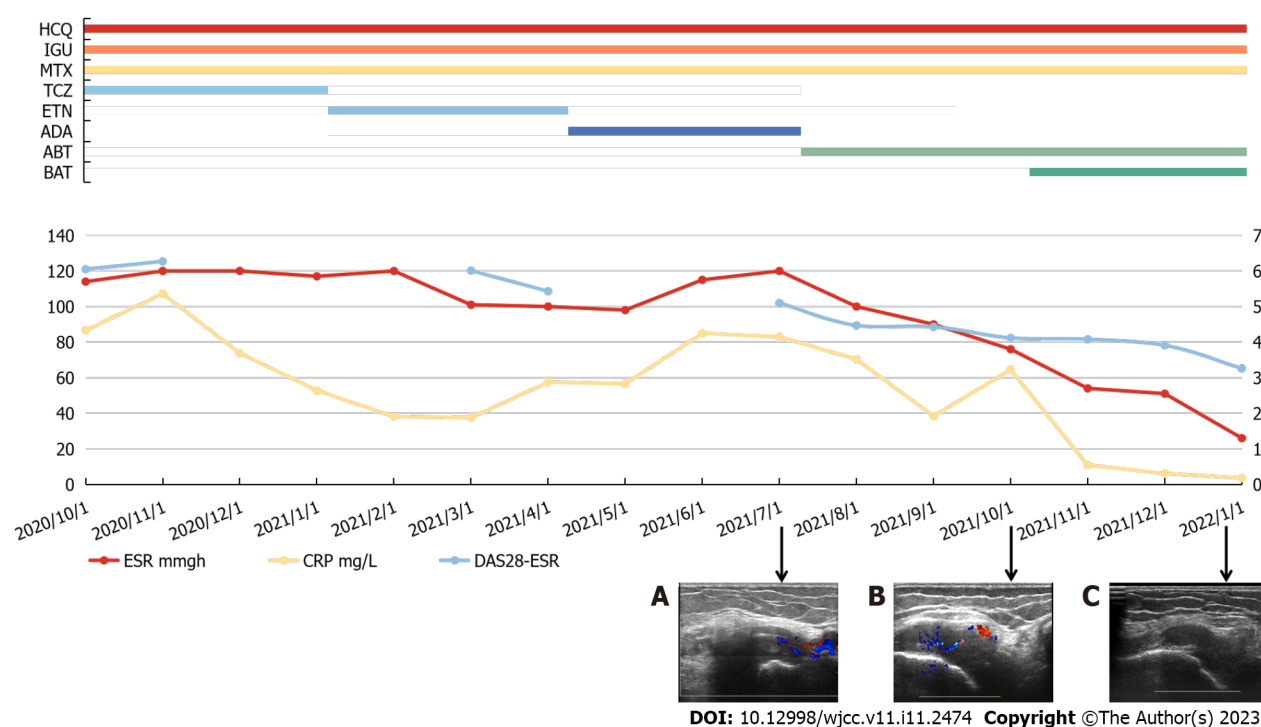


Figure 2 Clinical course of the patient (this statistic does not include tofacitinib because it was only utilized for two weeks). A: Doppler flow imaging showed abundant blood flow signal in the articular cavity in 2021-7-1 (arrow); B: Doppler flow imaging showed abundant blood flow signal in the articular cavity in 2021-10-1 (arrow); C: Doppler flow imaging showed a few punctate blood flow signal in the articular cavity in 2022-1-1 (arrow); HCQ: Hydroxychloroquine, 400 mg/day; IGU: Iguratimod, 50 mg/day; MTX: Methotrexate, 12.5 mg/week; TCZ: Tocilizumab, 400 mg/4 weeks; ETN: Etanercept, 50 mg/week; ADA: Adalimumab, 40 mg/2week; ABT: Abatacept, 250 mg/week; BAT: Bbaricitinib, 2 mg/day; ESR: Erythrocyte sedimentation rate; CRP: C-reactive protein; DAS28-ESR: Disease Activity Score for 28 joints with erythrocyte sedimentation rate.

including comorbidities, poor medication compliance, financial constraints, and reluctance to intensify treatment[11]. Furthermore, from an immunogenetics standpoint, T-lymphocyte pathways play a significant role in inducing and perpetuating chronic relapsing arthritis of D2TRA[12]. Cytotoxic T-lymphocyte-associated protein 4 (CTLA-4) was first identified as an inhibitory signal that is delivered to stop the immune response and has the potential to adversely limit T-lymphocyte activation in various ways[13]. In several research investigations, the prevalence of D2T RA ranged from 5% to 20% of patients with RA[14]. Compared to RA patients, D2T RA patients have more impairment and die sooner. As a result, high-quality evidence is needed to guide D2 TRA patients' management and assist in the formulation of a structured and tailored treatment approach.

CTLA-4 was first identified as an inhibitory signal delivered to stop immune response and has the potential to adversely limit T-lymphocyte activation in a variety of ways[15]. ABT is a soluble, recombinant, completely humanized fusion protein made up of CTLA-4's extracellular domain and IgG1's Fc region. Interacts with co-stimulatory molecules CD80 Antigen and CD80 Antigen on antigen-presenting cells and inhibits T-lymphocyte activation by interfering with CD28 signaling. ABT has been demonstrated to be beneficial in combating a multitude of autoinflammatory disorders, including RA [16,17]. However, several clinical studies have proved that the single CTLA-4 therapy has a limited ability to block T-lymphocyte activation[18,19]. Inflammatory cytokines [Interleukin 6 (IL-6), IL-17, IL-18, and IL-1], which compensate for the loss of costimulatory signals in an inflammatory environment, can enhance the activation of allogeneic T-lymphocytes in a CD28-independent way. By signaling inflammatory cytokines, the JAK/ Signal Transducers and Activators of Transcription (STAT) system plays a vital role in CTLA-4 failure[20].

JAK inhibitors interact with the ATP-binding sites such as JAK1, JAK2, JAK3, and tyrosine kinase 2 (TYK2) to suppress kinase phosphorylation and the JAK/STAT signaling pathway. However, it increases the risk of upper respiratory infections, herpes zoster, hematological abnormalities, and gastrointestinal problems[21]. Four JAK inhibitors are currently approved for RA[22]. As one of them, BAT can effectively inhibit JAK1 and JAK2, and moderately inhibit TYK2. Studies have shown that BAT with safety profiles may be more suitable for RA patients who are resistant to multiple bDMARDs and have a higher American College of Rheumatology (ACR) response rate than Tofacitinib (which mainly inhibits JAK1 and JAK3)[23,24]. It is known that IL-6 signaling is mediated by JAK1 and JAK2, and IL-17 and IL-18 signaling are mainly mediated by JAK2[25-28]. In the treatment of this patient, BAT may have inhibited the signaling of inflammatory cytokines by inhibiting the JAK/STAT pathway, cooperated with the inhibitory effect of ABT on costimulatory signals, and blocked the inflammatory response.

With a more comprehensive exploration of the inflammatory molecules that antagonize CTLA4-Ig and the mechanisms underlying the synergism between BAT and CTLA4-Ig, it will be helpful to identify next-generation JAK inhibitors that will interact with other immunosuppressants more selectively and develop safer and more effective D2T RA management.

We report a case of D2T RA in which the effect was not significant after the replacement of multiple DMARDs, especially ABT, and the combination of ABT and JAK inhibitors was effective. Inflammatory cytokines can compensate for the inhibitory effect of ABT on costimulatory signals, activate T lymphocytes through the JAK/STAT pathway, and promote the inflammatory response. When considering the etiology and treatment of D2T RA patients, especially when the ABT response is not significant, this case can be used as a valuable reference.

CONCLUSION

Inflammatory cytokines can compensate for the inhibitory effect of ABT on co-stimulatory signals, activate T-lymphocytes through the JAK/STAT pathway, and promote the inflammatory response. In the treatment of this patient, BAT, as a JAK inhibitor, combined with ABT can be used as a rescue treatment for D2TRA, especially for patients with poor responses to single ABT treatment.

FOOTNOTES

Author contributions: Qi JP contributed to the intellectual content and drafted the manuscript; Jiang H and Wu T were responsible for the acquisition and interpretation of the data; Huang W and Li YX reconstructed the images, prepared the legends, and updated the literature; Wang J and Zhang J reviewed the data and interpreted the results; Zhang Y was responsible for the acquisition of Color Doppler flow imaging; All authors made a substantial contribution to the preparation of the manuscript, as well as read and approved the final version of the manuscript.

Informed consent statement: Informed written consent was obtained from the patient for the publication of this report and any accompanying images.

Conflict-of-interest statement: The authors declare that they have no conflict of interest to disclose.

CARE Checklist (2016) statement: The authors have read the CARE Checklist (2016), and the manuscript was prepared and revised according to the CARE Checklist (2016).

Open-Access: This article is an open-access article that was selected by an in-house editor and fully peer-reviewed by external reviewers. It is distributed in accordance with the Creative Commons Attribution NonCommercial (CC BY-NC 4.0) license, which permits others to distribute, remix, adapt, build upon this work non-commercially, and license their derivative works on different terms, provided the original work is properly cited and the use is non-commercial. See: <https://creativecommons.org/licenses/by-nc/4.0/>

Country/Territory of origin: China

ORCID number: Zhen-Hua Ying 0000-0002-5443-3675.

S-Editor: Liu GL

L-Editor: A

P-Editor: Liu GL

REFERENCES

- 1 de Hair MJH, Jacobs JWG, Schoneveld JLM, van Laar JM. Difficult-to-treat rheumatoid arthritis: an area of unmet clinical need. *Rheumatology (Oxford)* 2018; **57**: 1135-1144 [PMID: 29029308 DOI: 10.1093/rheumatology/kex349]
- 2 Kearsley-Fleet L, Davies R, De Cock D, Watson KD, Lunt M, Buch MH, Isaacs JD, Hyrich KL; BSRBR-RA Contributors Group. Biologic refractory disease in rheumatoid arthritis: results from the British Society for Rheumatology Biologics Register for Rheumatoid Arthritis. *Ann Rheum Dis* 2018; **77**: 1405-1412 [PMID: 29980575 DOI: 10.1136/annrheumdis-2018-213378]
- 3 Buch MH. Defining refractory rheumatoid arthritis. *Ann Rheum Dis* 2018; **77**: 966-969 [PMID: 29588276 DOI: 10.1136/annrheumdis-2017-212862]
- 4 Nagy G, Roodenrys NMT, Welsing PM, Kedves M, Hamar A, van der Goes MC, Kent A, Bakkers M, Blaas E, Senolt L, Szekanecz Z, Choy E, Dougados M, Jacobs JW, Geenen R, Bijlsma HW, Zink A, Aletaha D, Schoneveld L, van Riel P, Gutermann L, Prior Y, Nikiphorou E, Ferraccioli G, Schett G, Hyrich KL, Mueller-Ladner U, Buch MH, McInnes IB, van der Heijde D, van Laar JM. EULAR definition of difficult-to-treat rheumatoid arthritis. *Ann Rheum Dis* 2021; **80**: 31-35 [PMID: 33004335 DOI: 10.1136/annrheumdis-2020-217344]

- 5 **Roodenrys NMT**, van der Goes MC, Welsing PMJ, Tekstra J, Lafeber FPJG, Jacobs JWG, van Laar JM. Difficult-to-treat rheumatoid arthritis: contributing factors and burden of disease. *Rheumatology (Oxford)* 2021; **60**: 3778-3788 [PMID: 33331946 DOI: 10.1093/rheumatology/keaa860]
- 6 **Smolen JS**, Landewé RBM, Bijlsma JWG, Burmester GR, Dougados M, Kerschbaumer A, McInnes IB, Sepriano A, van Vollenhoven RF, de Wit M, Aletaha D, Aringer M, Askling J, Balsa A, Boers M, den Broeder AA, Buch MH, Buttgerit F, Caporali R, Cardiel MH, De Cock D, Codreanu C, Cutolo M, Edwards CJ, van Eijk-Hustings Y, Emery P, Finckh A, Gossec L, Gottenberg JE, Hetland ML, Huizinga TWJ, Koloumas M, Li Z, Mariette X, Müller-Ladner U, Mysler EF, da Silva JAP, Poór G, Pope JE, Rubbert-Roth A, Ruysen-Witrand A, Saag KG, Strangfeld A, Takeuchi T, Voshaar M, Westhovens R, van der Heijde D. EULAR recommendations for the management of rheumatoid arthritis with synthetic and biological disease-modifying antirheumatic drugs: 2019 update. *Ann Rheum Dis* 2020; **79**: 685-699 [PMID: 31969328 DOI: 10.1136/annrheumdis-2019-216655]
- 7 **Emery P**, Burmester GR, Bykerk VP, Combe BG, Furst DE, Barré E, Karyekar CS, Wong DA, Huizinga TW. Evaluating drug-free remission with abatacept in early rheumatoid arthritis: results from the phase 3b, multicentre, randomised, active-controlled AVERT study of 24 months, with a 12-month, double-blind treatment period. *Ann Rheum Dis* 2015; **74**: 19-26 [PMID: 25367713 DOI: 10.1136/annrheumdis-2014-206106]
- 8 **Lundquist LM**, Cole SW, Augustine JM. Critical appraisal of efficacy and safety of abatacept in the treatment of refractory rheumatoid arthritis. *Open Access Rheumatol* 2012; **4**: 9-19 [PMID: 27790008 DOI: 10.2147/OARRR.S16073]
- 9 **Suzuki M**, Takahashi N, Kida D, Hirano Y, Kato T, Yabe Y, Oguchi T, Fujibayashi T, Hayashi M, Asai S, Ishiguro N, Kojima T. Clinical effectiveness and safety of additional administration of tacrolimus in rheumatoid arthritis patients with an inadequate response to abatacept: A retrospective cohort study. *Int J Rheum Dis* 2019; **22**: 2199-2205 [PMID: 31647174 DOI: 10.1111/1756-185X.13731]
- 10 **Reddy V**, Cohen S. Role of Janus Kinase inhibitors in rheumatoid arthritis treatment. *Curr Opin Rheumatol* 2021; **33**: 300-306 [PMID: 33767091 DOI: 10.1097/BOR.0000000000000792]
- 11 **Roodenrys NMT**, de Hair MJH, van der Goes MC, Jacobs JWG, Welsing PMJ, van der Heijde D, Aletaha D, Dougados M, Hyrich KL, McInnes IB, Mueller-Ladner U, Senolt L, Szekanecz Z, van Laar JM, Nagy G; whole EULAR Task Force on development of EULAR recommendations for the comprehensive management of difficult-to-treat rheumatoid arthritis. Characteristics of difficult-to-treat rheumatoid arthritis: results of an international survey. *Ann Rheum Dis* 2018; **77**: 1705-1709 [PMID: 30194273 DOI: 10.1136/annrheumdis-2018-213687]
- 12 **Watanabe R**, Hashimoto M, Murata K, Murakami K, Tanaka M, Ohmura K, Ito H, Matsuda S. Prevalence and predictive factors of difficult-to-treat rheumatoid arthritis: the KURAMA cohort. *Immunol Med* 2022; **45**: 35-44 [PMID: 34033729 DOI: 10.1080/25785826.2021.1928383]
- 13 **Tuncel J**, Holmberg J, Haag S, Hopkins MH, Wester-Rosenlöf L, Carlsen S, Olofsson P, Holmdahl R. Self-reactive T cells induce and perpetuate chronic relapsing arthritis. *Arthritis Res Ther* 2020; **22**: 95 [PMID: 32345366 DOI: 10.1186/s13075-020-2104-7]
- 14 **Roodenrys NMT**, Hamar A, Kedves M, Nagy G, van Laar JM, van der Heijde D, Welsing PMJ. Pharmacological and non-pharmacological therapeutic strategies in difficult-to-treat rheumatoid arthritis: a systematic literature review informing the EULAR recommendations for the management of difficult-to-treat rheumatoid arthritis. *RMD Open* 2021; **7** [PMID: 33419871 DOI: 10.1136/rmdopen-2020-001512]
- 15 **Mitsuiki N**, Schwab C, Grimbacher B. What did we learn from CTLA-4 insufficiency on the human immune system? *Immunol Rev* 2019; **287**: 33-49 [PMID: 30565239 DOI: 10.1111/imr.12721]
- 16 **Bonelli M**, Scheinecker C. How does abatacept really work in rheumatoid arthritis? *Curr Opin Rheumatol* 2018; **30**: 295-300 [PMID: 29401118 DOI: 10.1097/BOR.0000000000000491]
- 17 **Hosseini A**, Gharibi T, Marofi F, Babaloo Z, Baradaran B. CTLA-4: From mechanism to autoimmune therapy. *Int Immunopharmacol* 2020; **80**: 106221 [PMID: 32007707 DOI: 10.1016/j.intimp.2020.106221]
- 18 **Khalifian S**, Raimondi G, Lee WA, Brandacher G. Taming inflammation by targeting cytokine signaling: new perspectives in the induction of transplantation tolerance. *Immunotherapy* 2014; **6**: 637-653 [PMID: 248966314 DOI: 10.2217/imt.14.25]
- 19 **Vincenti F**, Charpentier B, Vanrenterghem Y, Rostaing L, Bresnahan B, Darji P, Massari P, Mondragon-Ramirez GA, Agarwal M, Di Russo G, Lin CS, Garg P, Larsen CP. A phase III study of belatacept-based immunosuppression regimens versus cyclosporine in renal transplant recipients (BENEFIT study). *Am J Transplant* 2010; **10**: 535-546 [PMID: 20415897 DOI: 10.1111/j.1600-6143.2009.03005.x]
- 20 **Iglesias M**, Khalifian S, Oh BC, Zhang Y, Miller D, Beck S, Brandacher G, Raimondi G. A short course of tofacitinib sustains the immunoregulatory effect of CTLA4-Ig in the presence of inflammatory cytokines and promotes long-term survival of murine cardiac allografts. *Am J Transplant* 2021; **21**: 2675-2687 [PMID: 333311212 DOI: 10.1111/ajt.16456]
- 21 **Choy EH**. Clinical significance of Janus Kinase inhibitor selectivity. *Rheumatology (Oxford)* 2019; **58**: 953-962 [PMID: 30508136 DOI: 10.1093/rheumatology/key339]
- 22 **You H**, Xu D, Zhao J, Li J, Wang Q, Tian X, Li M, Zeng X. JAK Inhibitors: Prospects in Connective Tissue Diseases. *Clin Rev Allergy Immunol* 2020; **59**: 334-351 [PMID: 32222877 DOI: 10.1007/s12016-020-08786-6]
- 23 **Miyazaki Y**, Nakano K, Nakayamada S, Kubo S, Inoue Y, Fujino Y, Tanaka Y. Efficacy and safety of tofacitinib versus baricitinib in patients with rheumatoid arthritis in real clinical practice: analyses with propensity score-based inverse probability of treatment weighting. *Ann Rheum Dis* 2021; **80**: 1130-1136 [PMID: 33827788 DOI: 10.1136/annrheumdis-2020-219699]
- 24 **Lee YH**, Song GG. Relative efficacy and safety of tofacitinib, baricitinib, upadacitinib, and filgotinib in comparison to adalimumab in patients with active rheumatoid arthritis. *Z Rheumatol* 2020; **79**: 785-796 [PMID: 320559284 DOI: 10.1007/s00393-020-00750-1]
- 25 **Taylor PC**. Clinical efficacy of launched JAK inhibitors in rheumatoid arthritis. *Rheumatology (Oxford)* 2019; **58**: i17-i26 [PMID: 30806707 DOI: 10.1093/rheumatology/key225]
- 26 **Clark JD**, Flanagan ME, Telliez JB. Discovery and development of Janus kinase (JAK) inhibitors for inflammatory diseases. *J Med Chem* 2014; **57**: 5023-5038 [PMID: 24417533 DOI: 10.1021/jm401490p]

- 27 **Kao CY**, Chen Y, Thai P, Wachi S, Huang F, Kim C, Harper RW, Wu R. IL-17 markedly up-regulates beta-defensin-2 expression in human airway epithelium *via* JAK and NF-kappaB signaling pathways. *J Immunol* 2004; **173**: 3482-3491 [PMID: [15322213](#) DOI: [10.4049/jimmunol.173.5.3482](#)]
- 28 **Lee KM**, Kang JH, Yun M, Lee SB. Quercetin inhibits the poly(dA:dT)-induced secretion of IL-18 *via* down-regulation of the expressions of AIM2 and pro-caspase-1 by inhibiting the JAK2/STAT1 pathway in IFN- γ -primed human keratinocytes. *Biochem Biophys Res Commun* 2018; **503**: 116-122 [PMID: [29857000](#) DOI: [10.1016/j.bbrc.2018.05.191](#)]



Published by **Baishideng Publishing Group Inc**
7041 Koll Center Parkway, Suite 160, Pleasanton, CA 94566, USA

Telephone: +1-925-3991568

E-mail: bpgoffice@wjgnet.com

Help Desk: <https://www.f6publishing.com/helpdesk>

<https://www.wjgnet.com>

