

# World Journal of *Clinical Cases*

*World J Clin Cases* 2024 March 16; 12(8): 1382-1548



## Contents

Thrice Monthly Volume 12 Number 8 March 16, 2024

## EDITORIAL

- 1382 Latest updates on structure and recommendations of cardiac rehabilitation programs in chronic heart failure  
*Kourek C, Briasoulis A, Magouliotis DE, Skoularigis J, Xanthopoulos A*
- 1388 Immunoglobulin A glomerulonephropathy: A review  
*El Labban M, Surani S*

## ORIGINAL ARTICLE

## Retrospective Study

- 1395 Serum proteins differentially expressed in gestational diabetes mellitus assessed using isobaric tag for relative and absolute quantitation proteomics  
*Cao WL, Yu CP, Zhang LL*

## Observational Study

- 1406 Effect of comprehensive nursing on the quality of life and swallowing function in individuals diagnosed with ischemic stroke  
*Hu HF, Sang YF, Xiao YQ*

## META-ANALYSIS

- 1416 Safety and effectiveness of butorphanol in epidural labor analgesia: A protocol for a systematic review and meta-analysis  
*Tang GC, He M, Huang ZZ, Cheng Y*

## CASE REPORT

- 1422 Left lower lobe sleeve resection for the clear cell variant of pulmonary mucoepidermoid carcinoma: A case report  
*Yu XH, Wang WX, Yang DS, Gong LH*
- 1430 Lower extremity peripherally inserted central catheter placement ectopic to the ascending lumbar vein: A case report  
*Zhu XJ, Zhao L, Peng N, Luo JM, Liu SX*
- 1437 Effect of foot reflexology on an infant with sensorineural hearing loss: A case report  
*Lee YJ, Chen MQ, Dong J*
- 1442 Development of immature ovarian teratoma after mature teratoma in a girl with familial ovarian teratoma: A case report  
*Ju UC, Kang WD, Kim SM*

- 1448** Metastatic clear cell sarcoma of the pancreas: A rare case report  
*Liu YJ, Zou C, Wu YY*
- 1454** 3M syndrome patient with a novel mutation: A case report  
*Luo MR, Dai SM, Li Y, Wang Q, Liu H, Gao P, Liu JY, Chen J, Zhao SJ, Yin GY*
- 1461** Appendiceal intussusception complicated by adenocarcinoma of the cecum: A case report  
*Long Y, Xiang YN, Huang F, Xu L, Li XY, Zhen YH*
- 1467** Malignant triton tumor in the abdominal wall: A case report  
*Yang HJ, Kim D, Lee WS, Oh SH*
- 1474** Multilocular thymic cysts can be easily misdiagnosed as malignant tumor on computer tomography: A case report  
*Sun J, Yang QN, Guo Y, Zeng P, Ma LY, Kong LW, Zhao BY, Li CM*
- 1481** Diagnosis of poorly differentiated adenocarcinoma of the stomach by confocal laser endomicroscopy: A case report  
*Lou JX, Wu Y, Huhe M, Zhang JJ, Jia DW, Jiang ZY*
- 1487** High-grade pancreatic intraepithelial neoplasia diagnosed based on changes in magnetic resonance cholangiopancreatography findings: A case report  
*Furuya N, Yamaguchi A, Kato N, Sugata S, Hamada T, Mizumoto T, Tamaru Y, Kusunoki R, Kuwai T, Kouno H, Kuraoka K, Shibata Y, Tazuma S, Sudo T, Kohno H, Oka S*
- 1497** Chronic infectious unilateral giant thyroid cyst related to diabetes mellitus: A case report  
*Liu JB, Zhang SL, Jiang WL, Sun HK, Yang HC*
- 1504** Multiple thoracic and abdominal foregut duplication cysts: A case report  
*Alsinan TA, Altokhais TI*
- 1510** Advanced cervix cancer patient with chemotherapy-induced grade IV myelosuppression achieved complete remission with cadonilimab: A case report  
*Zhu R, Chen TZ, Sun MT, Zhu CR*
- 1517** Detection of 4p16.3 deletion and 11p15.5p15.4 gain in a boy by comparative genomic hybridization array: A case report  
*Kaya I*
- 1523** Eccrine porocarcinoma in the temple of an elderly woman: A case report  
*Wu ZW, Zhu WJ, Huang S, Tan Q, You C, Hu DG, Li LN*
- 1530** Analysis and monitoring of drug therapy in a patient with peptic ulcer complicated by infection: A case report  
*Gou YP, Huang Y, Chen L, Zheng W, Zheng YH*
- 1536** Primary gastroduodenal tuberculosis presenting as gastric outlet obstruction: A case report and review of literature  
*Ali AM, Mohamed YG, Mohamud AA, Mohamed AN, Ahmed MR, Abdullahi IM, Saydam T*

- 1544** Clinical manifestations and the prenatal diagnosis of trisomy 7 mosaicism: Two case reports

*Hou F, Li Y, Jin H*

**ABOUT COVER**

Peer Reviewer of *World Journal of Clinical Cases*, Makram Koubaa, MD, Assistant Professor, Department of Infectious Diseases, Hedi Chaker University Hospital, Sfax 3029, Tunisia. makram.koubaa@gmail.com

**AIMS AND SCOPE**

The primary aim of *World Journal of Clinical Cases* (WJCC, *World J Clin Cases*) is to provide scholars and readers from various fields of clinical medicine with a platform to publish high-quality clinical research articles and communicate their research findings online.

WJCC mainly publishes articles reporting research results and findings obtained in the field of clinical medicine and covering a wide range of topics, including case control studies, retrospective cohort studies, retrospective studies, clinical trials studies, observational studies, prospective studies, randomized controlled trials, randomized clinical trials, systematic reviews, meta-analysis, and case reports.

**INDEXING/ABSTRACTING**

The WJCC is now abstracted and indexed in Science Citation Index Expanded (SCIE, also known as SciSearch®), Journal Citation Reports/Science Edition, Current Contents®/Clinical Medicine, PubMed, PubMed Central, Reference Citation Analysis, China Science and Technology Journal Database, and Superstar Journals Database. The 2023 Edition of Journal Citation Reports® cites the 2022 impact factor (IF) for WJCC as 1.1; IF without journal self cites: 1.1; 5-year IF: 1.3; Journal Citation Indicator: 0.26; Ranking: 133 among 167 journals in medicine, general and internal; and Quartile category: Q4.

**RESPONSIBLE EDITORS FOR THIS ISSUE**

Production Editor: Hua-Ge Yin, Production Department Director: Xu Guo, Editorial Office Director: Jin-Lei Wang.

**NAME OF JOURNAL**

*World Journal of Clinical Cases*

**ISSN**

ISSN 2307-8960 (online)

**LAUNCH DATE**

April 16, 2013

**FREQUENCY**

Thrice Monthly

**EDITORS-IN-CHIEF**

Bao-Gan Peng, Salim Surani, Jerzy Tadeusz Chudek, George Kontogeorgos, Maurizio Serati

**EDITORIAL BOARD MEMBERS**

<https://www.wjgnet.com/2307-8960/editorialboard.htm>

**PUBLICATION DATE**

March 16, 2024

**COPYRIGHT**

© 2024 Baishideng Publishing Group Inc

**INSTRUCTIONS TO AUTHORS**

<https://www.wjgnet.com/bpg/gerinfo/204>

**GUIDELINES FOR ETHICS DOCUMENTS**

<https://www.wjgnet.com/bpg/GerInfo/287>

**GUIDELINES FOR NON-NATIVE SPEAKERS OF ENGLISH**

<https://www.wjgnet.com/bpg/gerinfo/240>

**PUBLICATION ETHICS**

<https://www.wjgnet.com/bpg/GerInfo/288>

**PUBLICATION MISCONDUCT**

<https://www.wjgnet.com/bpg/gerinfo/208>

**ARTICLE PROCESSING CHARGE**

<https://www.wjgnet.com/bpg/gerinfo/242>

**STEPS FOR SUBMITTING MANUSCRIPTS**

<https://www.wjgnet.com/bpg/GerInfo/239>

**ONLINE SUBMISSION**

<https://www.f6publishing.com>



## Lower extremity peripherally inserted central catheter placement ectopic to the ascending lumbar vein: A case report

Xiao-Ju Zhu, Ling Zhao, Na Peng, Jia-Min Luo, Shui-Xia Liu

**Specialty type:** Nursing

**Provenance and peer review:**

Unsolicited article; Externally peer reviewed.

**Peer-review model:** Single blind

**Peer-review report's scientific quality classification**

Grade A (Excellent): 0

Grade B (Very good): 0

Grade C (Good): 0

Grade D (Fair): 0

Grade E (Poor): 0

**P-Reviewer:** Ueda H, Japan

**Received:** October 2, 2023

**Peer-review started:** October 2, 2023

**First decision:** December 15, 2023

**Revised:** December 29, 2023

**Accepted:** February 18, 2024

**Article in press:** February 18, 2024

**Published online:** March 16, 2024



Xiao-Ju Zhu, Ling Zhao, Na Peng, Jia-Min Luo, Shui-Xia Liu, Cancer Center, Daping Hospital, Army Medical University, Chongqing 400042, China

**Corresponding author:** Shui-Xia Liu, RN, Associate Chief Nurse, Cancer Center, Daping Hospital, Army Medical University, No. 10 Changjiang Zhilu, Yuzhong District, Chongqing 400042, China. [529672777@qq.com](mailto:529672777@qq.com)

### Abstract

#### BACKGROUND

Peripherally inserted central catheters (PICCs) are an essential infusion route for oncology patients receiving intravenous treatments, but lower extremity venipuncture is the preferred technique for patients with superior vena cava syndrome (SVCS). We report the case of a patient with a lower extremity PICC ectopic to the ascending lumbar vein, to indicate and verify PICC catheterisation in the lower extremity is safe and feasible. And hope to provide different perspectives for clinical PICC venipuncture to get the attention of peers.

#### CASE SUMMARY

On 24 August 2022, a 58-year-old male was admitted to our department due to an intermittent cough persisting for over a month, which worsened 10 d prior. Imaging and laboratory investigations suggested the patient with pulmonary malignancy and SVCS. Chemotherapy was not an absolute contraindication in this patient. Lower extremity venipuncture is the preferred technique because administering upper extremity venous transfusion to patients with SVCS can exacerbate oedema in the head, neck, and upper extremities. The patient and his family were informed about the procedure, and informed consent was obtained. After successful puncture and prompt treatment, the patient was discharged, experiencing some relief from symptoms.

#### CONCLUSION

Inferior vena cava catheterisation is rare and important for cancer patients with SVCS, particularly in complex situations involving ectopic placement.

**Key Words:** Superior vena cava syndrome; Peripherally inserted central catheter; Ascending lumbar vein; Complications; Case report

©The Author(s) 2024. Published by Baishideng Publishing Group Inc. All rights reserved.

**Core Tip:** The conventional peripherally inserted central catheter catheterization selected deep venous vessels in the upper limb. Patients with superior vena cava syndrome (SVCS), lower extremity venipuncture is the preferred technique because administering upper extremity venous transfusion to patients with SVCS can exacerbate oedema in the head, neck, and upper extremities. The greater angle of the left lower extremity vein through the common iliac vein into the inferior vena cava and the conundrum that the left side of the femoral vein does not easily enter the inferior vena cava when passing through the common iliac vein, a right lower extremity catheterisation was performed in this case report.

**Citation:** Zhu XJ, Zhao L, Peng N, Luo JM, Liu SX. Lower extremity peripherally inserted central catheter placement ectopic to the ascending lumbar vein: A case report. *World J Clin Cases* 2024; 12(8): 1430-1436

**URL:** <https://www.wjgnet.com/2307-8960/full/v12/i8/1430.htm>

**DOI:** <https://dx.doi.org/10.12998/wjcc.v12.i8.1430>

## INTRODUCTION

Due to their safety, reliability, and applicability, peripherally inserted central catheters (PICCs) play a crucial role in delivering chemotherapy and other intravenous treatments to oncology patients. PICCs have effectively prevented issues like repeated punctures, venous injury from chemotherapy drugs, and tissue necrosis caused by drug extravasation. In oncology, the prevalence of superior vena cava syndrome (SVCS) is notable. SVCS occurs due to partial or complete blockage of blood flow back to the right atrium *via* the superior vena cava. Patients with SVCS present with acute or subacute dyspnoea and oedema of the face and neck. Lower extremity venipuncture is the preferred technique because administering upper extremity venous transfusion to patients with SVCS can exacerbate oedema in the head, neck, and upper extremities. Peripherally inserted central catheterisation in the lower extremity is safe and feasible, providing a viable path for establishing safe venous transfusion in patients with SVCS while reducing the discomfort associated with repeated venous punctures. However, despite its benefits, peripherally inserted central catheterisation is associated with several complications such as catheter dislocation, rupture, leakage, occlusion, infections, phlebitis, and venous thrombosis. Herein, the case of a patient with a lower extremity PICC ectopic to the ascending lumbar vein is reported.

## CASE PRESENTATION

### Chief complaints

An intermittent cough persisting for over a month, which worsened 10 d prior.

### History of present illness

In mid-July 2022, the patient developed intermittent cough, dry cough, but without diagnosis and treatment. In mid-August, the patient felt that his cough symptoms worsened, and was treated in a local hospital for chest computed tomography (CT) indicating lung occupying. Chest enhanced CT was further performed in The First Affiliated Hospital of Chongqing Medical University. Enhanced chest CT revealed a soft tissue mass in the right upper mediastinum and right hilus pulmonis suggesting a malignant neoplastic lesion, highly suggestive of mediastinal-type lung cancer involving the superior vena cava and the innominate vein, along with internal cancer thrombosis and multiple collateral circulations in the right neck and back root. Further, bronchofibrescopic biopsies were performed.

### History of past illness

The patient was previously healthy, with no history of chronic disease, infectious diseases, and also suffered no accidental trauma. He also has a history of smoking for about 30 years and drinking alcohol for more than 20 years.

### Personal and family history

Father died of natural causes, mother died of "lung cancer" and siblings are in good health.

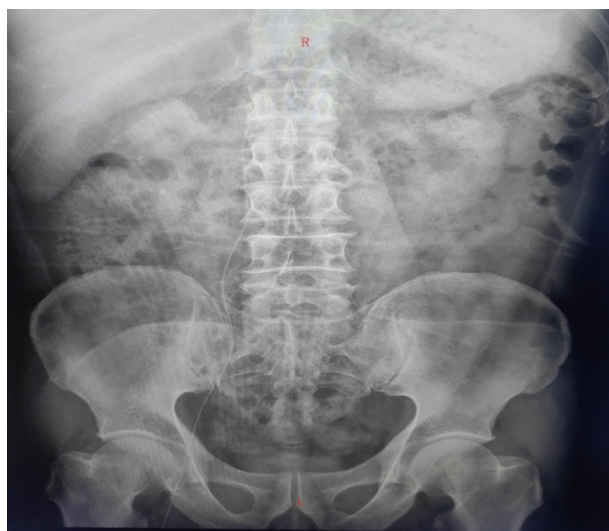
### Physical examination

Temperature: 36.0 °C, pulse frequency: 76 times/min, respiratory rate: 20 times/min, blood pressure: 96/70 mmHg, clear mind, mental stability, walked into the ward, skin and mucous membranes of the whole body normal, no edema, no subcutaneous bleeding.

### Laboratory examinations

Except for the abnormalities of the relevant tumor markers, blood routine examination, urine routine examination, stool routine examination without special tips.





**Figure 1** Catheter tip at the lumbar 1 segment.

### **Imaging examinations**

Enhanced chest CT revealed a soft tissue mass in the right upper mediastinum and the right hilus pulmonis, suggesting a malignant neoplastic lesion, highly suggestive of mediastinal-type lung cancer involving the superior vena cava and the innominate vein. Internal cancer-related thrombosis and multiple collateral circulations in the right neck and back root were also observed. Further, bronchofibrescopic biopsies confirmed the diagnoses of small cell lung cancer (cT4N3Mx) in the right hilus pulmonis, secondary malignancy in the lymph nodes, and SVCS.

## **FINAL DIAGNOSIS**

The following diagnoses were established: (1) Small cell lung cancer (cT4N3Mx) in the right hilus pulmonis; (2) Secondary malignancy in the lymph nodes; and (3) SVCS.

## **TREATMENT**

Chemotherapy was not an absolute contraindication in this patient. Therefore, the initial treatment involved a chemotherapy cycle comprising etoposide and cisplatin (etoposide 0.15 g venous drip/venous drip D1-3 + cisplatin 60 mg VD D1, 50 mg VD D2). An antiemetic was administered during chemotherapy to maintain the water-electrolyte balance. Additionally, a central catheter was inserted to treat SVCS.

## **OUTCOME AND FOLLOW-UP**

After successful puncture, abdominal radiography confirmed the catheter's placement at lumbar 1 (**Figure 1**). Prompt treatment, the patient was discharged, experiencing some relief from symptoms. The patient was re-examined on 18 September 2022. Blood coagulation was observed within the catheter and extension tube, indicating a blockage due to haemagglutination (**Figure 2**). Despite negative pressure thrombolysis using urokinase during pumpback, no blood was observed; however, the transfusion flow remained unobstructed. A second test of conventional chest and abdominal radiography were performed to confirm the catheter's placement, which indicated that the catheter tip was situated at lumbar 4, with 3 cm of it remaining exposed (**Figure 3**). This caused the catheter to bend within the vessel. Attempts to alleviate the obstruction by connecting saline to the syringe and quickly injecting it from the catheter cavity were made, followed by a re-examination through chest and abdomen flat slice imaging. Despite these efforts, the catheter tip was still located at lumbar 4. Although the catheter was retained due to successful administration of the second-cycle treatment, a CT re-examination at the end of the third-cycle treatment displayed the absence of the catheter within the superior vena cava (**Figure 4**). This was suggestive of a potential ectopic position. Subsequent analysis of vascular anatomy and CT images by the radiologist confirmed the catheter's ectopic placement within the ascending lumbar vein (**Figure 5**). Reporting this to the hospital's venous specialist team prompted catheter removal, with successful blood retraction and transfusion upon catheter retraction to 28 cm. Finally, the catheter was safely secured after being cut and repositioned into the external iliac vein (**Figure 6**).





Figure 2 Coagulated blood in the catheter and extension tube.



Figure 3 The bent catheter tip at the lumbar 4 segment.

---

## DISCUSSION

---

### Assessment

It is crucial for the nursing team to thoroughly evaluate the vessel before surgery to prevent potential intravascular complications[1].

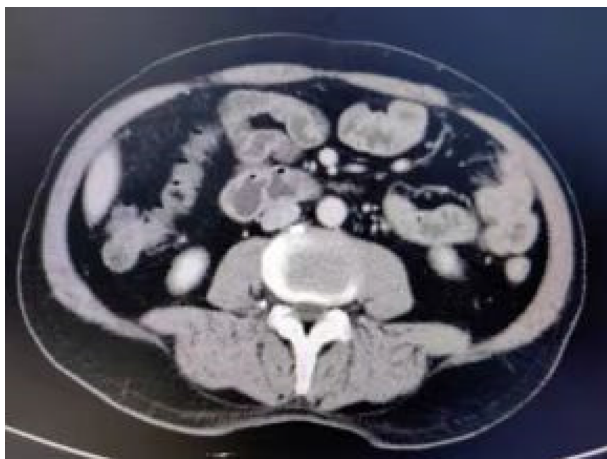


Figure 4 Computed tomography image revealing that the catheter was not in the superior vena cava.

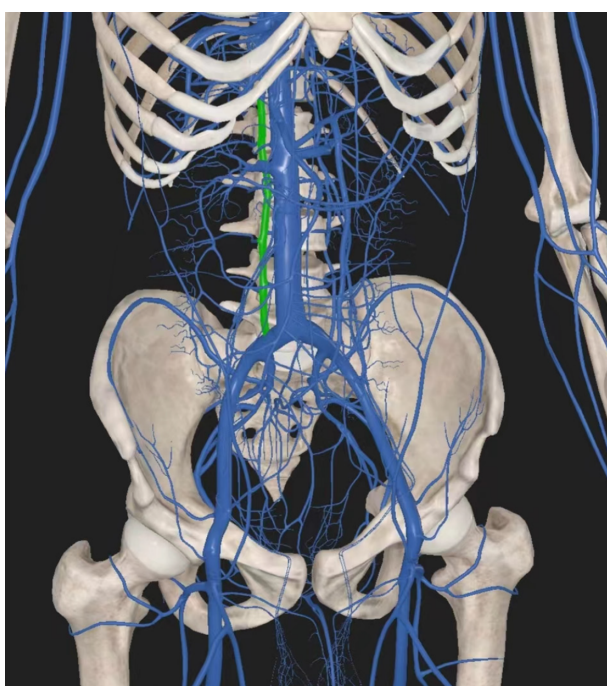


Figure 5 Three-dimensional body vascular anatomy.

### **Lower extremity vessel selection**

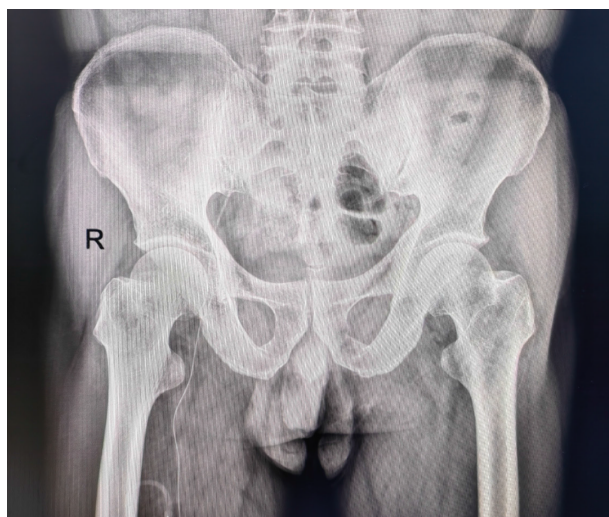
In clinical practice, the right lower extremity vein is preferred for lower extremity catheterisation[2,3]. The complexity arises from the greater angle of the left lower extremity vein and passage through the common iliac vein into the inferior vena cava on the left side, making it challenging to place a catheter in the left lower extremity vein.

### **Causes of catheter blood regurgitation**

Several factors, such as blockage of the catheter's open end, blood regurgitation due to various factors including cough-induced pressure[4], improper sealing of the catheter after transfusion, blood clot formation within the catheter, vascular injury, blood flow stagnation, a hypercoagulable state of the patient, and intraluminal occlusion due to fibrin or clot formation[5]. Considering these factors is crucial in clinical practice.

### **Identification of catheter ectopia**

The lumbar veins are the ventral branches of the inferior vena cava. The dilated ascending lumbar vein is easily accessed using a guidewire. However, due to its alignment with the inferior vena cava along the longitudinal axis, distinguishing it in resulting radiographs becomes challenging. Moreover, the infrequency of such cases adds to the difficulty in identification. After encountering a series of late complications, a conclusion was reached through multidisciplinary discussions and CT.



**Figure 6** Catheter tip in the external iliac vein.

### **Location of the catheter tip**

Relevant studies suggest that an inaccurate position of the catheter tip poses a risk for unplanned extubation[6]. Herein, the lower extremity PICC tip did not fully reach the inferior vena cava[7]. Therefore, it is essential to consider the nature of the drug before administering it. Additionally, to prevent associated complications, a thorough assessment of catheter function and drug properties by the sedation nurse specialist, clinician, and pharmacist is essential before administration.

## **CONCLUSION**

Incorrect catheter tip placement increases the risk of vascular perforation, infection, and ectopia, increasing the probability of arrhythmia, thrombosis, and potentially fatal outcomes[8]. This report highlights an unusual instance of a lower extremity PICC positioned ectopically in the ascending lumbar vein. Our study provides a basis for subsequent clinical care. It emphasises the need to holistically assess the patient's overall condition by considering various factors in the context of the primary issue. Accurately identifying the vascular anatomy and precise determination of the catheter tip's location are crucial for effective treatment and medication administration, particularly in patients with cancer. Early identification can lower complication rates, prolong catheter retention time, and improve patient satisfaction and quality of life. The collaborative efforts of a multidisciplinary team are crucial role in successful peripherally inserted central catheterisation and relevant care. However, inferior vena cava catheterisation is rare, particularly in complex situations involving ectopic placement. Therefore, multidisciplinary team collaboration, standardisation, and evaluation for special patient punctures have gained the interest of researchers.

## **FOOTNOTES**

**Co-first authors:** Xiao-Ju Zhu and Ling Zhao.

**Author contributions:** Zhu XJ was the patient's supervisor nurse, who carried out the study, reviewed the literature, contributed to manuscript drafting, and was responsible for revising the manuscript for important intellectual content; Zhao L, Peng N, Luo JM and Liu SX reviewed the literature and contributed to manuscript drafting; Zhu XJ and Zhao L contributed equally to this work as co-first authors; All authors issued final approval for the version to be submitted.

**Supported by** the Chongqing Medical Scientific Research Project (a joint project of the Chongqing Health Commission and Science and Technology Bureau), No. 2020FYYX046.

**Informed consent statement:** Written informed consent was obtained for the peripherally inserted central catheter placement.

**Conflict-of-interest statement:** The authors declare no potential conflicts of interest concerning the research, authorship, and/or publication of this article.

**CARE Checklist (2016) statement:** The authors have read the CARE Checklist (2016), and the manuscript was prepared and revised according to the CARE Checklist (2016).

**Open-Access:** This article is an open-access article that was selected by an in-house editor and fully peer-reviewed by external reviewers. It is distributed in accordance with the Creative Commons Attribution NonCommercial (CC BY-NC 4.0) license, which permits others to

distribute, remix, adapt, build upon this work non-commercially, and license their derivative works on different terms, provided the original work is properly cited and the use is non-commercial. See: <https://creativecommons.org/licenses/by-nc/4.0/>

**Country/Territory of origin:** China

**ORCID number:** Xiao-Ju Zhu 0000-0001-7257-3818; Shui-Xia Liu 0000-0003-3472-6216.

**S-Editor:** Zhang H

**L-Editor:** A

**P-Editor:** Zheng XM

---

## REFERENCES

- 1 **Raptis DA**, Neal K, Bhalla S. Imaging Approach to Misplaced Central Venous Catheters. *Radiol Clin North Am* 2020; **58**: 105-117 [PMID: 31731895 DOI: 10.1016/j.rcl.2019.08.011]
- 2 **Gorski LA**, Hadaway L, Hagle ME, Broadhurst D, Clare S, Kleidon T, Meyer BM, Nickel B, Rowley S, Sharpe E, Alexander M. Infusion Therapy Standards of Practice, 8th Edition. *J Infus Nurs* 2021; **44**: S1-S224 [PMID: 33394637 DOI: 10.1097/NAN.0000000000000396]
- 3 **Wang YH**, Su CS, Chang KH, Went CJ, Lee WL, Lai CH. Percutaneous intervention to correct central venous port catheter malposition. *Perfusion* 2018; **33**: 404-406 [PMID: 29224434 DOI: 10.1177/0267659117747376]
- 4 **Guimarães AF**, Souza AA, Bouzada MC, Meira ZM. Accuracy of chest radiography for positioning of the umbilical venous catheter. *J Pediatr (Rio J)* 2017; **93**: 172-178 [PMID: 27424226 DOI: 10.1016/j.jpeds.2016.05.004]
- 5 **Hawthorn A**, Bulmer AC, Mosawy S, Keogh S. Implications for maintaining vascular access device patency and performance: Application of science to practice. *J Vasc Access* 2019; **20**: 461-470 [PMID: 30665330 DOI: 10.1177/1129729818820200]
- 6 **Gorski LA**. Complication of infusion therapy. In: Gorski LA. Phillips's Manual of I.V. Therapeutics: Evidence-Based Practice for infusion Therapy. 7th ed. Philadelphia: F.A. Davis Company, 2018
- 7 **Kisa P**, Ting J, Callejas A, Osiovich H, Butterworth SA. Major thrombotic complications with lower limb PICCs in surgical neonates. *J Pediatr Surg* 2015; **50**: 786-789 [PMID: 25783362 DOI: 10.1016/j.jpedsurg.2015.02.043]
- 8 **Sertic AJ**, Connolly BL, Temple MJ, Parra DA, Amaral JG, Lee KS. Perforations associated with peripherally inserted central catheters in a neonatal population. *Pediatr Radiol* 2018; **48**: 109-119 [PMID: 28986615 DOI: 10.1007/s00247-017-3983-x]



Published by **Baishideng Publishing Group Inc**  
7041 Koll Center Parkway, Suite 160, Pleasanton, CA 94566, USA

**Telephone:** +1-925-3991568

**E-mail:** [office@baishideng.com](mailto:office@baishideng.com)

**Help Desk:** <https://www.f6publishing.com/helpdesk>

<https://www.wjgnet.com>

