

# World Journal of *Clinical Cases*

World J Clin Cases 2018 November 6; 6(13): 577-715





### REVIEW

- 577 Role of bile acids in colon carcinogenesis  
*Nguyen TT, Ung TT, Kim NH, Jung YD*

### MINIREVIEWS

- 589 Update on global epidemiology of viral hepatitis and preventive strategies  
*Jefferies M, Rauff B, Rashid H, Lam T, Rafiq S*

### ORIGINAL ARTICLE

#### Case Control Study

- 600 Iron metabolism disorders in patients with hepatitis B-related liver diseases  
*Gao YH, Wang JY, Liu PY, Sun J, Wang XM, Wu RH, He XT, Tu ZK, Wang CG, Xu HQ, Niu JQ*

#### Retrospective Cohort Study

- 611 Impact of an acute hemodynamic response-guided protocol for primary prophylaxis of variceal bleeding  
*Forteza JI, Puente Á, Ruiz P, Ezcurra I, Vaquero J, Cuadrado A, Arias-Loste MT, Cabezas J, Llerena S, Iruzubieta P, Rodríguez-Lope C, Huelin P, Casafont F, Fábrega E, Crespo J*

#### Retrospective Study

- 624 Effect of a region-wide incorporation of an algorithm based on the 2012 international consensus guideline on the practice pattern for the management of pancreatic cystic neoplasms in an integrated health system  
*Nguyen AK, Girg A, Tekeste T, Chang K, Adeyemo M, Eskandari A, Alonso E, Yaramada P, Chaya C, Ko A, Burke E, Roggow I, Butler R, Kawatkar A, Lim BS*

- 632 Usefulness of colonic tattooing using indocyanine green in patients with colorectal tumors  
*Park JH, Moon HS, Kwon IS, Yun GY, Lee SH, Park DH, Kim JS, Kang SH, Lee ES, Kim SH, Sung JK, Lee BS, Jeong HY*

#### Randomized Clinical Trial

- 641 *Helicobacter pylori* may be an initiating factor in newly diagnosed ulcerative colitis patients: A pilot study  
*Mansour L, El-Kalla F, Kobtan A, Abd-Elsalam S, Yousef M, Soliman S, Ali LA, Elkhawany W, Amer I, Harras H, Hagar MM, Elhendawy M*

### META-ANALYSIS

- 650 Photodynamic therapy for middle-advanced stage upper gastrointestinal carcinomas: A systematic review and meta-analysis  
*Chen B, Xiong L, Chen WD, Zhao XH, He J, Zheng YW, Kong FH, Liu X, Zhang ZJ, Miao XY*

### CASE REPORT

- 659** Successful rescue of acute liver failure and hemophagocytic lymphohistiocytosis following varicella infection: A case report and review of literature  
*Zhang LN, Guo W, Zhu JH, Guo Y*
- 666** Bilateral thoracic kidneys combined with inferior vena cava located behind the anterior abdominal wall: A case report and review of literature  
*Peng XX, Cheng SA, Liang QL, Luo XB, Hong XC, Yuan GL, Zhang HJ*
- 671** Incident hepatocellular carcinoma developing during tenofovir alafenamide treatment as a rescue therapy for multi-drug resistant hepatitis B virus infection: A case report and review of the literature  
*Lu JC, Liu LG, Lin L, Zheng SQ, Xue Y*
- 675** Possible connection between elevated serum  $\alpha$ -fetoprotein and placental necrosis during pregnancy: A case report and review of literature  
*Yu MY, Xi L, Zhang JX, Zhang SC*
- 679** Laparoscopic pancreatic duct incision and stone removal and T-type tube drainage for pancreatic duct stone: A case report and review of literature  
*Bai Y, Yu SA, Wang LY, Gong DJ*
- 683** Detection of a unicentric type of Castleman-like mass at the site of adrenal gland: A case report and review of literature  
*Chen J, Yang C, Liang CZ*
- 688** Systemic lupus erythematosus complicated by noncirrhotic portal hypertension: A case report and review of literature  
*Yang QB, He YL, Peng CM, Qing YF, He Q, Zhou JG*
- 694** Natural killer/T-cell lymphoma with concomitant syndrome of inappropriate antidiuretic hormone secretion: A case report and review of literature  
*Liu QB, Zheng R*
- 703** Successful treatment of pyoderma gangrenosum with concomitant immunoglobulin A nephropathy: A case report and review of literature  
*Li XL, Ma ZG, Huang WH, Chai EQ, Hao YF*



- 707 Highlighting the importance of early diagnosis in progressive multi-organ involvement of IgG4-related disease: A case report and review of literature

*Xue J, Wang XM, Li Y, Zhu L, Liu XM, Chen J, Chi SH*

**ABOUT COVER**

Editorial Board Member of *World Journal of Clinical Cases*, Byung-Wook Kim, MD, PhD, Professor, Division of Gastroenterology, Department of Internal Medicine, Incheon St. Mary's Hospital, the Catholic University of Korea, Incheon 21431, South Korea

**AIM AND SCOPE**

*World Journal of Clinical Cases* (*World J Clin Cases*, *WJCC*, online ISSN 2307-8960, DOI: 10.12998) is a peer-reviewed open access academic journal that aims to guide clinical practice and improve diagnostic and therapeutic skills of clinicians.

The primary task of *WJCC* is to rapidly publish high-quality Autobiography, Case Report, Clinical Case Conference (Clinicopathological Conference), Clinical Management, Diagnostic Advances, Editorial, Field of Vision, Frontier, Medical Ethics, Original Articles, Clinical Practice, Meta-Analysis, Minireviews, Review, Therapeutics Advances, and Topic Highlight, in the fields of allergy, anesthesiology, cardiac medicine, clinical genetics, clinical neurology, critical care, dentistry, dermatology, emergency medicine, endocrinology, family medicine, gastroenterology and hepatology, geriatrics and gerontology, hematology, immunology, infectious diseases, internal medicine, obstetrics and gynecology, oncology, ophthalmology, orthopedics, otolaryngology, pathology, pediatrics, peripheral vascular disease, psychiatry, radiology, rehabilitation, respiratory medicine, rheumatology, surgery, toxicology, transplantation, and urology and nephrology.

**INDEXING/ABSTRACTING**

*World Journal of Clinical Cases* (*WJCC*) is now indexed in PubMed, PubMed Central, Science Citation Index Expanded (also known as SciSearch®), and Journal Citation Reports/Science Edition. The 2018 Edition of Journal Citation Reports cites the 2017 impact factor for *WJCC* as 1.931 (5-year impact factor: N/A), ranking *WJCC* as 60 among 154 journals in Medicine, General and Internal (quartile in category Q2).

**EDITORS FOR THIS ISSUE**

**Responsible Assistant Editor:** *Xiang Li*  
**Responsible Electronic Editor:** *Yun-XiaoJian Wu*  
**Proofing Editor-in-Chief:** *Lian-Sheng Ma*

**Responsible Science Editor:** *Ying Dou*  
**Proofing Editorial Office Director:** *Jin-Lei Wang*

**NAME OF JOURNAL**  
*World Journal of Clinical Cases*

**ISSN**  
ISSN 2307-8960 (online)

**LAUNCH DATE**  
April 16, 2013

**FREQUENCY**  
Semimonthly

**EDITORS-IN-CHIEF**  
**Sandro Vento, MD**, Department of Internal Medicine, University of Botswana, Private Bag 00713, Gaborone, Botswana

**EDITORIAL BOARD MEMBERS**  
All editorial board members resources online at <http://www.wjgnet.com/2307-8960/editorialboard.htm>

**EDITORIAL OFFICE**  
Jin-Lei Wang, Director

*World Journal of Clinical Cases*  
Baishideng Publishing Group Inc  
7901 Stoneridge Drive, Suite 501, Pleasanton, CA 94588, USA  
Telephone: +1-925-2238242  
Fax: +1-925-2238243  
E-mail: [editorialoffice@wjgnet.com](mailto:editorialoffice@wjgnet.com)  
Help Desk: <http://www.f6publishing.com/helpdesk>  
<http://www.wjgnet.com>

**PUBLISHER**  
Baishideng Publishing Group Inc  
7901 Stoneridge Drive, Suite 501, Pleasanton, CA 94588, USA  
Telephone: +1-925-2238242  
Fax: +1-925-2238243  
E-mail: [bpgoffice@wjgnet.com](mailto:bpgoffice@wjgnet.com)  
Help Desk: <http://www.f6publishing.com/helpdesk>  
<http://www.wjgnet.com>

**PUBLICATION DATE**  
November 6, 2018

**COPYRIGHT**

© 2018 Baishideng Publishing Group Inc. Articles published by this Open Access journal are distributed under the terms of the Creative Commons Attribution Non-commercial License, which permits use, distribution, and reproduction in any medium, provided the original work is properly cited, the use is non commercial and is otherwise in compliance with the license.

**SPECIAL STATEMENT**

All articles published in journals owned by the Baishideng Publishing Group (BPG) represent the views and opinions of their authors, and not the views, opinions or policies of the BPG, except where otherwise explicitly indicated.

**INSTRUCTIONS TO AUTHORS**

<http://www.wjgnet.com/bpg/gerinfo/204>

**ONLINE SUBMISSION**

<http://www.f6publishing.com>

## Natural killer/T-cell lymphoma with concomitant syndrome of inappropriate antidiuretic hormone secretion: A case report and review of literature

Quan-Bo Liu, Rui Zheng

Quan-Bo Liu, Rui Zheng, Department of Respiratory Medicine, Shengjing Hospital of China Medical University, Shenyang 110004, Liaoning Province, China

ORCID number: Quan-Bo Liu (0000-0002-0668-2829); Rui Zheng (0000-0001-5906-0081).

**Author contributions:** Zheng R and Liu QB designed the report; Liu QB collected the patient's clinical data and wrote the paper.

**Informed consent statement:** The patient was not required to give informed consent to the study because the analysis used anonymous data that were obtained after the patient gave written consent for treatment.

**Conflict-of-interest statement:** The authors declare that they have no conflicts of interest.

**CARE Checklist (2013) statement:** The authors have read the CARE Checklist (2013), and the manuscript was prepared and revised according to the CARE Checklist (2013).

**Open-Access:** This article is an open-access article which was selected by an in-house editor and fully peer-reviewed by external reviewers. It is distributed in accordance with the Creative Commons Attribution Non Commercial (CC BY-NC 4.0) license, which permits others to distribute, remix, adapt, build upon this work non-commercially, and license their derivative works on different terms, provided the original work is properly cited and the use is non-commercial. See: <http://creativecommons.org/licenses/by-nc/4.0/>

**Manuscript source:** Unsolicited manuscript

**Correspondence to:** Rui Zheng, MD, PhD, Doctor, Professor, Teacher, Department of Respiratory Medicine, Shengjing Hospital of China Medical University, No. 36, Sanhao Street, Heping District, Shenyang 110004, Liaoning Province, China. [zhengr@sj-hospital.org](mailto:zhengr@sj-hospital.org)  
Telephone: +86-2496-61521211  
Fax: +86-2496-61572116

Received: July 31, 2018

Peer-review started: July 31, 2018

First decision: August 31, 2018

Revised: October 3, 2018

Accepted: October 11, 2018

Article in press: October 11, 2018

Published online: November 6, 2018

### Abstract

We report a case of natural killer (NK)/T-cell lymphoma with concomitant syndrome of inappropriate antidiuretic hormone secretion (SIADH). The patient was a 64-year-old woman with a history of nasopharyngeal carcinoma of over 30 years. She was admitted with a chief complaint of intermittent fever for 2 mo. Palpation after admission indicated a swollen lymph node below the left jaw. Multiple imaging examinations on admission indicated multiple enlarged lymph nodes throughout the body. We performed a left submandibular lymph node biopsy, and the results revealed NK/T-cell lymphoma. A biochemical examination indicated Epstein-Barr virus positivity. At the same time, the patient developed hyponatremia. Based on her laboratory examination and clinical manifestation, decreased plasma osmolality, urine osmolality greater than plasma osmolality, lack of skin swelling, normal blood pressure, normal renal function, no adrenal function detected on serology, and no abnormalities in imaging examination of the adrenal glands, the likelihood of SIADH in the patient was high. After fluid restriction and administration of sodium chloride, the patient's blood sodium level gradually increased. Subsequently, the immune function of the patient declined, there were severe symptoms of infection, and she died of respiratory failure. NK/T-cell lymphoma associated with SIADH has not, to our



knowledge, been previously reported in PubMed. This case emphasizes the importance of monitoring serum ion levels, especially serum sodium, in patients with NK/T-cell lymphoma.

**Key words:** Epstein-Barr virus; Case report; Literature review; Syndrome of inappropriate antidiuretic hormone secretion; Natural killer/T-cell lymphoma

© **The Author(s) 2018.** Published by Baishideng Publishing Group Inc. All rights reserved.

**Core tip:** Lymphoma is known to be a cause of syndrome of inappropriate antidiuretic hormone secretion (SIADH). Moreover, Epstein-Barr virus (EBV) has a high infection rate, and in very rare cases, it can lead to extranodal natural killer (NK)/T-cell lymphoma. A very limited number of patients with lymphoma accompanied by SIADH have been reported, but NK/T-cell lymphoma with concomitant SIADH has not yet been reported in PubMed. Here, we present a case of NK/T-cell lymphoma in a 64-year-old woman with EBV infection accompanied by SIADH, suggesting the importance of monitoring serum ions, especially serum sodium, in patients with NK/T-cell lymphoma.

Liu QB, Zheng R. Natural killer/T-cell lymphoma with concomitant syndrome of inappropriate antidiuretic hormone secretion: A case report and review of literature. *World J Clin Cases* 2018; 6(13): 694-702 Available from: URL: <http://www.wjgnet.com/2307-8960/full/v6/i13/694.htm> DOI: <http://dx.doi.org/10.12998/wjcc.v6.i13.694>

## INTRODUCTION

Epstein-Barr virus (EBV) is a well-recognized carcinogen that has been implicated in the etiology of several malignancies, including nasopharyngeal carcinoma<sup>[1]</sup>. The viral tropism of EBV is toward the B lymphocyte, but in very rare cases it can infect ectopic T and/or natural killer (NK) cells, leading to extranodal NK/T-cell lymphoma. Syndrome of inappropriate antidiuretic hormone secretion (SIADH) is a common cause of hyponatremia<sup>[2]</sup>, but the symptoms of SIADH are nonspecific, which make it hard to detect and treat promptly. Untreated acute hyponatremia can cause substantial morbidity and mortality<sup>[3]</sup>. Many cancers can lead to SIADH<sup>[4]</sup>, including lymphoma. According to the 2016 revision of the World Health Organization classification of lymphoid neoplasms<sup>[5]</sup>, lymphomas are classified as either Hodgkin or non-Hodgkin lymphomas, and NK-cell lymphomas are in the latter class. Although non-Hodgkin lymphoma with concomitant SIADH has been reported internationally, NK/T-cell lymphoma with concomitant SIADH has not been reported in PubMed. Herein, we present a case of NK/T-cell lymphoma in a 64-year-old woman with EBV infection accompanied

by SIADH, and suggest that monitoring serum ions, especially serum sodium, is vital in patients with NK/T-cell lymphoma.

## CASE REPORT

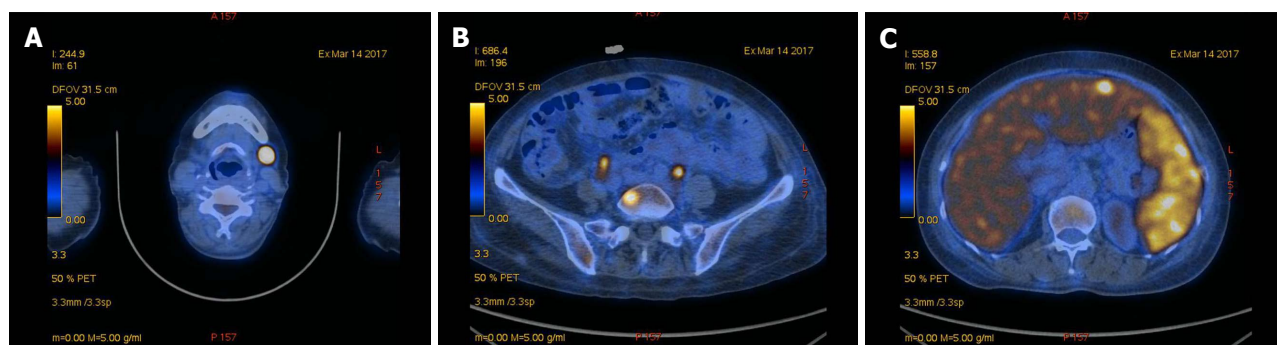
A 64-year-old woman was admitted with a chief complaint of intermittent fever for 2 mo. Two months previously, the patient had a sinus infection resulting from a cold, accompanied by intermittent fevers in the afternoon, with body temperature reaching as high as 38.9 °C. The patient had a history of nasopharyngeal carcinoma of over 30 years, which was controlled with chemotherapy; there was no recurrence to this point. One year prior, she had traveled to Europe, where she ate local food including sausage and fish.

Physical examination after admission indicated a body temperature of 37.1 °C, heart rate of 80 bpm, respiratory rate of 18 breaths per minute, and blood pressure of 14.7/9.3 kPa. A 2.5 cm × 1 cm swollen, hard, unfixed, and painless lymph node was palpated below the left jaw. No blood congestion was found in the throat area. The left abdomen was soft with tender. No other obvious abnormalities were observed.

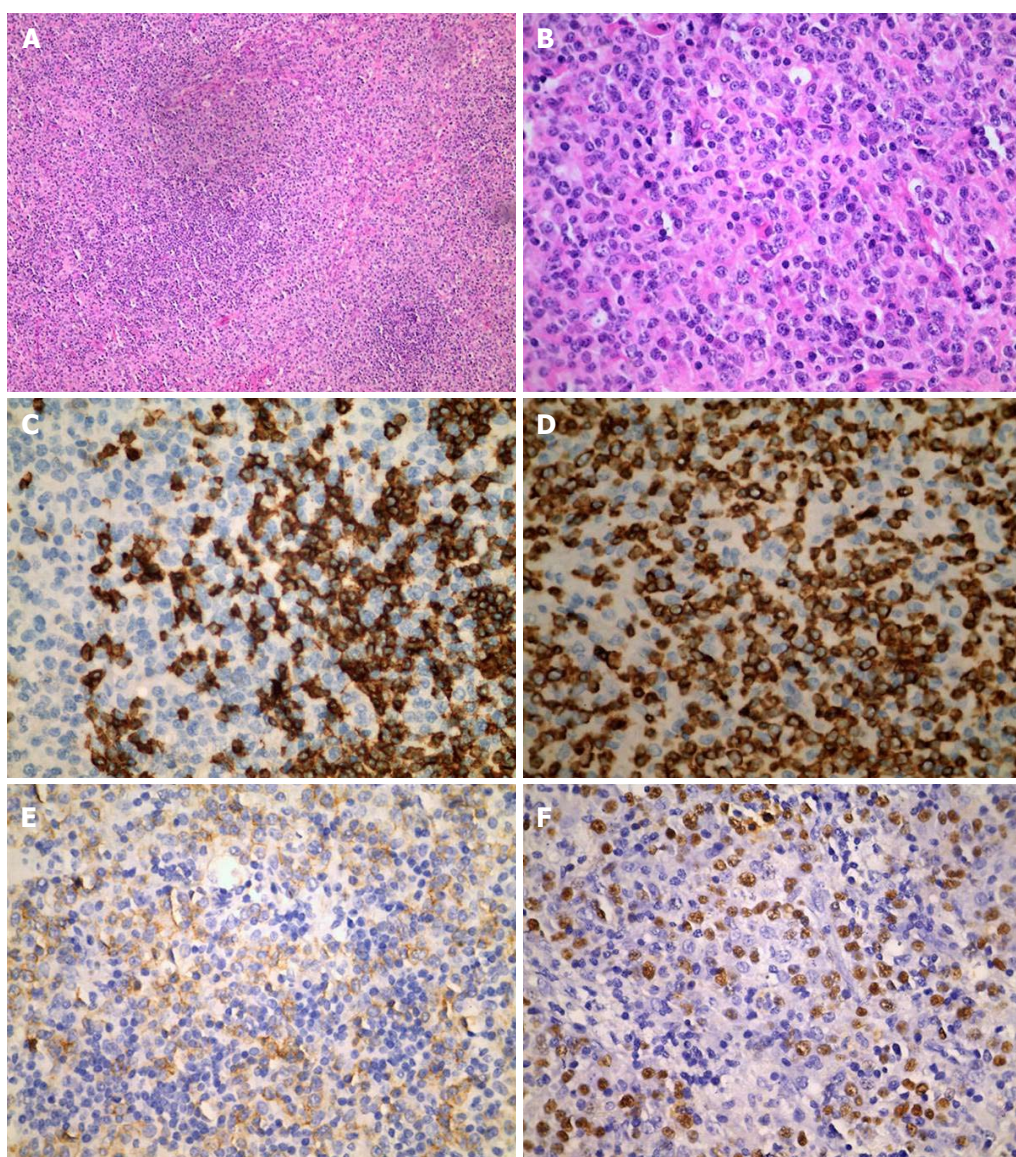
Laboratory tests indicated the following biochemical results: serum sodium, 137.6 mmol/L; white blood cell (WBC) count,  $2.4 \times 10^9/L$ ; neutrophil count,  $4.9 \times 10^9/L$ ; C-reactive protein, 11.7 mg/L; EBV quantitative DNA test,  $2.19E \times 10^4$  copies/mL; EBV NA-IgG antibodies, positive (+) (> 600); EBV VCA-IgG antibodies, positive (+) (> 750); and EBV-IgM antibodies, negative. No abnormalities were found in the remaining tests.

An imaging examination was performed on admission. Computed tomography of the lungs indicated that the bilateral axillary and mediastinal lymph nodes were slightly enlarged; enhanced computed tomography of the whole abdomen indicated swollen lymph nodes in the hepatic portal region and retroperitoneum, which did not rule out lymphoma; and bilateral ultrasound of the submandibular glands indicated several visible bilateral swollen lymph nodes. To determine the characteristics of the lymph nodes, whether lymphoma was present, and the margins of the lesion, we performed positron emission tomography-computed tomography, bone marrow biopsy, and left submandibular lymph node biopsy. Positron emission tomography-computed tomography indicated multiple swollen lymph nodes throughout the body accompanied by increased fluorodeoxyglucose metabolism, consistent with lymphoma (Figure 1). Bone marrow biopsy and immunotyping showed a myelogram with hyperplastic activity and a small number of abnormal lymphocytes, accounting for 4.80% of the visible cells other than NK lymphocytes. Biopsy of the left submandibular lymph nodes confirmed NK/T-cell lymphoma, and *in situ* hybridization showed multiple cells with strongly positive signal for EBV-encoded small RNA (Figure 2).

At day 10 after admission, the patient developed



**Figure 1**  $^{18}\text{F}$ -fluorodeoxyglucose-positron emission tomography/computed tomography. A: A swollen lymph node in the left submandibular region accompanied by increased fluorodeoxyglucose metabolism; B: Multiple lesions in the skeleton and the abdominal cavity with abnormally high metabolic activity; C: Swelling of the liver and spleen with increased metabolic activity accompanied by nodes with high metabolic activity in the parenchyma.



**Figure 2** Histological findings. A and B: Lymph node biopsy showing diffuse infiltration of malignant lymphoid cells (A: HE,  $\times 100$ , B:  $\times 400$ ). Immunohistochemical staining for (C) CD20(+), (D) CD3(+), and (E) CD56(+) ( $\times 400$ ). F: *In situ* hybridization showing EBV-encoded small RNA positivity, with most cells showing strongly positive staining ( $\times 400$ ). HE: Hematoxylin and eosin; EBV: Epstein-Barr virus.



lethargy, and had a serum Na<sup>+</sup> level of 116.9 mmol/L. Once daily concentrated sodium chloride solution of 20 mL + 250 mL 0.9% normal saline was administered intravenously. One day later, the serum Na<sup>+</sup> level decreased rapidly to 109.3 mmol/L. The serum K<sup>+</sup> level was 3.36 mmol/L, urea level was 2.99 mmol/L, serum creatinine was 47.8 μmol/L, blood glucose level was 7.08 mmol/L, plasma osmolality was 235.39 mOsm/kg, and urine osmolality was 494 mOsm/kg. The patient's blood pressure was normal during that time. The fluid intake of the patient was immediately restricted, and three times daily, two salt capsules and 10 mL of concentrated sodium chloride were administered orally. After 2 d, the patient's blood Na<sup>+</sup> level gradually increased to 126.5 mmol/L (8.6 mmol/L per day). Her mental state returned to normal, and the endocrinology department was consulted. Based on the patient's decreased plasma osmolality, urine osmolality greater than plasma osmolality, lack of skin swelling, normal blood pressure, normal renal function, no adrenal function detected on serology, and no abnormalities in imaging examination of the adrenal glands, as well as the effect of treatment, the likelihood of SIADH in the patient was high. The supplemental infusion of intravenous concentrated sodium chloride solution was discontinued, and renal sodium secretion was assayed. The hematology department was also consulted, and the patient was administered with epirubicin, vinorelbine sulfate, flumethasone, cyclophosphamide, and asparaginase chemotherapy, along with supportive treatment. We believed that the patient might be involved in stage 4B NK/T-cell lymphoma with concomitant SIADH, although with slightly lower renal sodium levels (20 mmol/L).

On day 30 after admission, the patient's white blood cell (WBC) count gradually decreased to  $0.1 \times 10^9/L$ , and the neutrophil count rapidly decreased to 0/L. The immune function of the patient declined, there were severe symptoms of infection, and respiratory function further deteriorated. On day 31 after admission, the WBC count gradually decreased to 0, various vital signs declined, and the patient died after failed resuscitation.

## DISCUSSION

SIADH has a hidden onset and is a syndrome caused by excessive antidiuretic hormone (ADH) secretion by the posterior pituitary<sup>[6]</sup>. It has a high mortality rate<sup>[3]</sup>. SIADH has many causes, and many cancers can lead to SIADH. It has been reported that lymphoma cells secrete ADH, and this prolonged ADH production results in SIADH<sup>[7-9]</sup>. SIADH secondary to lymphoma is relatively rare, and SIADH secondary to NK/T-cell lymphoma has not yet been reported.

The symptoms of SIADH are nonspecific, and are primarily based on diagnostic standards published by Bartter *et al.*<sup>[10]</sup> in 1967: (1) decreased plasma osmolality; (2) urine osmolality greater than plasma

osmolality; (3) increased renal sodium secretion; (4) no skin swelling and normal blood pressure; and (5) normal renal and adrenal function. Recent studies showed that a fractional excretion of uric acid > 12% has a high sensitivity and specificity for diagnosing SIADH<sup>[11]</sup> and can serve as a new basis for confirming an SIADH diagnosis. The first-line treatment for SIADH is restriction of fluid intake. If urine osmolality is higher than 500 mOsm/kg H<sub>2</sub>O and fluid restriction is ineffective, demethylchlortetracycline, urea, tolvaptan, and other drugs are instead used for treatment<sup>[12-14]</sup>. Intravenous infusion of 20–40 mg furosemide is used to manage volume overload, and 3% hypertonic saline solution by mouth or continuous intravenous infusion can be used as necessary for correcting hyponatremia<sup>[10,15]</sup>. During sodium solution infusion, the focus should be on changes in blood sodium rather than the rate of sodium solution infusion. In the first 24–48 h, changes in blood sodium should be closely monitored, and treatment should be adjusted accordingly to rapidly correct blood sodium to within the safe range; otherwise, correction to normal ranges will not be achieved.

Studies have shown that drugs and malignant tumors are the most common causes of SIADH<sup>[16]</sup>, and the prognosis for SIADH secondary to malignant tumors is poorer than that caused by drugs<sup>[4]</sup>. To reduce the development of SIADH, regular examinations of blood sodium should be performed when malignant tumors are discovered as well as when beginning to administer drugs that are known to cause SIADH; this can help facilitate the immediate discovery of decreased blood sodium and thus immediately manage symptoms and improve prognosis.

According to the 2016 revision of the World Health Organization classification of lymphoid neoplasms<sup>[5]</sup>, lymphomas are classified as either Hodgkin or non-Hodgkin lymphomas. Non-Hodgkin lymphomas are classified as either mature B cell lymphomas or mature T-cell lymphomas, and NK-cell lymphomas are the latter. Currently, 34 cases of non-Hodgkin lymphoma with concomitant SIADH have been reported internationally<sup>[7,8,17-34]</sup> (Table 1).

The male/female ratio of these 34 cases was 19:15, mean age was 69 years (range 23–84 years), and patients aged between 60 and 90 years accounted for 85% (29/34) of the patients. The clinical manifestations of SIADH in these cases were nonspecific, and large B-cell lymphoma made up 47% (16/34) of all the pathological types. Based on the known treatment data, the main treatment was fluid restriction, which was administered to 80% (16/20). The ratio of outcomes died/cured/unknown was 17:10:7, and the mortality rate of known outcomes was 63% (17/27). The clinical characteristics of known cases may be useful for clinicians to remain aware for these characteristics in patients who may be at risk for SIADH.

The pathogenesis of SIADH secondary to lymphoma

**Table 1 Published cases of non-Hodgkin lymphoma with concomitant syndrome of inappropriate antidiuretic hormone secretion**

Classification	Ref.	Country	Gender	Age	EBV status	Lymphoma classification	Symptoms	Treatment	Outcome
T-cell lymphoma	Chubachi <i>et al</i> <sup>[18]</sup> 1995	Japan	M/ F	53/78 yr	Infected	Nasal T-cell lymphoma	Fever following adjuvant chemotherapy	Fluid restriction	Died
	Demirkan <i>et al</i> <sup>[19]</sup> 2001	Turkey	M	23 yr	Unknown	Anaplastic large cell lymphoma	Weight loss Night sweats Fever	Fluid restriction	Died
	Hirata <i>et al</i> <sup>[8]</sup> 2012	Japan	F	40 yr	Unknown	Primary cutaneous anaplastic large cell lymphoma	Erythema Right shoulder ulceration	Fluid restriction Isotonic saline	Died
	Nishiwaki <i>et al</i> <sup>[30]</sup> 2014	Japan	F	70 yr	Unknown	Acute adult T-cell leukemia/lymphoma	Rash	Fluid restriction Isotonic saline	Cured
	Sun <i>et al</i> <sup>[34]</sup> 2018	China	M	71 yr	Uninfected	Extranodal nasal type natural killer (NK) / T cell lymphoma	Testicular enlargement Multiple rashes with eschar Obstinate hyponatremia	Fluid restriction Sodium chloride for oral Hypertonic saline infusion Hydrocortisone infusion	Died
B-cell lymphoma	Phan <i>et al</i> <sup>[25]</sup> 1998	Indonesia	M	53 yr	Unknown	Burkitt's lymphoma	Left maxillary swelling	Plasma exchanges Methotrexate Cytarabine Hydrocortisone	Died
	Sica <i>et al</i> <sup>[22]</sup> 1999	Italy	F	41 yr	Unknown	Primary central nervous system lymphoma	None	Fluid restriction Normal saline Diuretics	Cured
	Watabe <i>et al</i> <sup>[23]</sup> 2000	Japan	M	70 yr	Infected	Angiotropic B-cell lymphoma	Anemia High LDH	Fluid restriction	Died
	Ohara <i>et al</i> <sup>[27]</sup> 2007	Japan	F	65 yr	Unknown	Diffuse large B-cell lymphoma	Abdominal pain	Fluid restriction Acyclovir infusion	Cured
	Morimoto <i>et al</i> <sup>[20]</sup> 2007	Japan	M	75 yr	Unknown	Intravascular large B-cell lymphoma	Nothing	Fluid restriction Hypertonic saline infusion Furosemide Fludrocortisone acetate	Died
	Brodmann <i>et al</i> <sup>[26]</sup> 2007	Switzerland	F	76 yr	Unknown	Mantle cell lymphoma	Unknown	Fluid restriction Sodium chloride Potassium chloride	Cured
	Kobayashi <i>et al</i> <sup>[7]</sup> 2008	Japan	F	84 yr	Unknown	Diffuse large B-cell lymphoma	Left cervical tumor increased	Fluid restriction Isotonic saline	Cured
	Polprasert <i>et al</i> <sup>[21]</sup> 2011	Thailand	F	64 yr	Unknown	Follicular lymphoma	Watery diarrhea	Ganciclovir Rituximab Cyclophosphamide Vincristine Prednisolone	Cured
	Onishi <i>et al</i> <sup>[28]</sup> 2011	Japan	F/ M/ M M	73/80/83 yr 69/83 yr	Unknown	Asian variant of intravascular large B cell lymphoma	Unknown	Unknown	Unknown Died
	Onishi <i>et al</i> <sup>[28]</sup> 2011	Japan	M/M/F F/M	75/60/83 yr 84/64 yr	Unknown	Diffuse large B-cell lymphoma	Unknown	Unknown	Unknown Died
	Onishi <i>et al</i> <sup>[28]</sup> 2011	Japan	M/M/F/ M	74/69/75/75 yr	Unknown	Plasmablastic lymphoma/ Primary central nervous system lymphoma/ Mantle cell lymphoma/ Lymphoplasmacytic lymphoma	Unknown	Unknown	Died/ Died/ Unknown/ Died
	Bockorny <i>et al</i> <sup>[29]</sup> 2012	America	M	70 yr	Unknown	Marginal zone lymphoma	Fatigue Confusion Skin lesions	Fluid restriction Demeclocycline Rituximab	Cured
	Zhu <i>et al</i> <sup>[24]</sup> 2013	China	F	70 yr	Unknown	Diffuse large B-cell lymphoma	Nausea Vomiting Left leg radiating pain	Fluid restriction CHOP	Cured

Akhtar <i>et al</i> <sup>[17]</sup> 2013	United Kingdom	M	75 yr	Unknown	Intravascular large B-cell lymphoma	Weight loss Clammy Incontinent hypoxic	Fluid restriction Demeclocycline Fludrocortisone	Died
Sumiyoshi <i>et al</i> <sup>[31]</sup> 2014	Japan	F	61 yr	Unknown	Follicular lymphoma	Epigastralgia Peritoneal irritation Intestinal pseudo-obstruction	Aciclovir	Cured
Itaya <i>et al</i> <sup>[32]</sup> 2015	Japan	M	81 yr	Unknown	Diffuse large B-cell lymphoma	Fever Fatigue Anorexia	Hypertonic saline Hydrocortisone sodium succinate	Died
Shimizu <i>et al</i> <sup>[33]</sup> 2017	Japan	F	73 yr	Unknown	Mucosa-associated lymphoid tissue lymphoma	Unknown	Fluid restriction Hypertonic saline	Cured

F: Female; M: Male; EBV: Epstein-Barr virus; LDH: Lactate dehydrogenase; CHOP: Cyclophosphamide, doxorubicin, vincristine, prednisone.

is complex. One potential cause is abnormal secretion of ADH by lymphocytes<sup>[7,10,30]</sup>. In our case, because of the death of the patient, whether hyponatremia was recurrent could not be determined, and abnormal secretion of ADH by lymphocytes could not be ruled out. Central nervous system injury secondary to non-Hodgkin lymphomas may also play an important role in the pathogenesis of SIADH<sup>[10]</sup>. Hyponatremia can also lead to nervous system symptoms<sup>[10]</sup>, but the likelihood of central nervous system injury in our patient was low. The use of chemotherapy drugs such as vinca alkaloids and cyclophosphamide can also induce SIADH<sup>[35]</sup>. However, before SIADH was discovered in our patient, no chemotherapy drugs had been administered, so this did not apply in our case.

Hypercytokinemia is another important factor in the development of SIADH secondary to lymphoma. Studies have shown that the levels of epidermal growth factor (EGF), granulocyte colony-stimulating factor (G-CSF), interleukin (IL)-5, IL-6, IL-12, IP-10, sIL-2R $\alpha$ , membrane immunoglobulin (MIG), IL-1RA, and other cytokines are significantly elevated in T-cell lymphomas<sup>[36,37]</sup>. In extranodal nasal type NK/T-cell lymphomas, sIL-2R $\alpha$ , IL-6, and IL-10 are significantly elevated<sup>[38]</sup>. Increased IL-2, sIL-2R, IL-6, IL-1 $\beta$ , and tumor necrosis factor (TNF)- $\alpha$  can lead to abnormal secretion of ADH<sup>[39]</sup>. Watabe *et al*<sup>[23]</sup> found that patients with high levels of the cytokine IL-6 are more likely to develop SIADH. We did not examine the levels of cytokines in our patient; however, it cannot be ruled out that SIADH in our patient was associated with abnormal secretion of ADH by lymphocytes or that the lymphoma regulated ADH secretion through cytokines.

EBV is a member of the human herpesvirus family and its genome consists of a single double-stranded DNA molecule. It has a high infection rate, with potentially 90% or more of all individuals infected worldwide<sup>[40,41]</sup>. Humans are the only host for EBV and they become lifelong carriers of the virus after infection. Most hosts can live with EBV for a long period without any serious effects, but in some individuals, EBV is

closely associated with the development of malignant tumors<sup>[42]</sup>, including nasopharyngeal carcinoma and lymphomas. The viral tropism of EBV is toward B lymphocytes, but in very rare cases, it can infect ectopic T and/or NK cells, leading to chronic active EBV infection, extranodal NK/T-cell lymphoma, or invasive NK cell leukemia<sup>[43]</sup>.

EBV can be divided into three latency programs. Latency II shows expression of EBV nuclear antigen 1 (EBNA1) and latent membrane proteins (LMPs), and is closely associated with the development of peripheral NK/T-cell lymphoma and nasopharyngeal carcinoma in elderly patients<sup>[42,44-46]</sup>. Our patient had been diagnosed with both nasopharyngeal carcinoma and NK/T-cell lymphoma, and the possibility of long-term latent EBV infection cannot be ruled out.

According to the 2016 revision of the World Health Organization classification of lymphoid neoplasms, NK/T-cell lymphoma is categorized into mature T-cell lymphoma and extranodal nasal type NK/T-cell lymphoma. The latter type is a relatively rare lymphoma characterized by high invasiveness, poor prognosis, and high likelihood of recurrence. According to a 2010 report, extranodal nasal type NK/T-cell lymphoma accounts for 6.9% of non-Hodgkin lymphomas and 28.2% of T-cell and NK cell lymphomas in China<sup>[47,48]</sup>. Eighty to ninety percent of patients with nasal type NK/T-cell lymphoma report symptoms of nasal congestion, sinus infection, ulceration, and epistaxis<sup>[48]</sup>. Traditional treatments include chemotherapy, radiotherapy, and multimodal therapy, but even in patients with stage I or II disease, the 3-year survival rate is only 40%-50%<sup>[49-51]</sup>. Most published studies related to the efficacy of chemotherapy in extranodal NK/T-cell lymphoma have shown that the recurrence rate is as high as 50%<sup>[52]</sup>. Our patient was diagnosed with nasopharyngeal carcinoma 30 years earlier without recurrence following control with chemotherapy, but specific pathological examination results were not obtained. In addition, paraffin sections from over 30 years ago cannot be re-stained. Given the limitations of

previous pathological examinations, the possibility that the patient developed extranodal nasal type NK/T-cell lymphoma cannot be ruled out. However, based on its biological characteristics, namely, a high recurrence rate, high invasiveness, and poor prognosis, the likelihood that our patient developed extranodal nasal type NK/T-cell lymphoma 30 years ago is small.

In summary, NK/T-cell lymphoma with concomitant SIADH is relatively rare. Blood sodium must be closely monitored in lymphoma patients as an indicator of the development of SIADH, and immediate treatment by restricting fluid intake and replenishing sodium should be administered based on blood sodium levels. At the same time, actively searching for the cause of the disease and planning adjunctive therapy with drugs as needed will prevent critical patients from developing hyponatremia and hypo-osmolality, thereby improving their prognosis.

## ARTICLE HIGHLIGHTS

### Case characteristics

A 64-year-old woman was admitted with intermittent fever for 2 mo.

### Clinical diagnosis

Stage 4B natural killer (NK)/T-cell lymphoma with concomitant syndrome of inappropriate antidiuretic hormone secretion (SIADH).

### Differential diagnosis

Infection, typhoid, brucellosis, etc.

### Laboratory diagnosis

As determined by blood and urine sampling examination, serum Na<sup>+</sup> was 109.3 mmol/L, urea was 2.99 mmol/L, serum creatinine was 47.8 μmol/L, plasma osmolality was 235.39 mOsm/kg, and urine osmolality was 494 mOsm/kg.

### Imaging diagnosis

Positron emission tomography-computed tomography indicated multiple swollen lymph nodes throughout the body accompanied by increased fluorodeoxyglucose metabolism, consistent with lymphoma.

### Pathological diagnosis

Biopsy of the left submandibular lymph nodes confirmed NK/T-cell lymphoma.

### Treatment

Chemotherapy, fluid restriction, and administration of sodium chloride.

### Related reports

This is the first known report of NK/T-cell lymphoma with concomitant SIADH in PubMed.

### Term explanation

Lymphoma is one of the causes of SIADH; however, NK/T-cell lymphoma with concomitant SIADH has not been reported.

### Experiences and lessons

This case report emphasizes the importance of monitoring serum ions and etiological treatment in patients with NK/T-cell lymphoma.

## REFERENCES

- 1 Khan G, Hashim MJ. Global burden of deaths from Epstein-Barr virus attributable malignancies 1990-2010. *Infect Agent Cancer* 2014; **9**: 38 [PMID: 25473414 DOI: 10.1186/1750-9378-9-38]
- 2 Adrogue H, Madias N. Hyponatremia. *N Engl J Med* 2000; **342**: 1581-1589 [PMID: 10824078 DOI: 10.1056/NEJM200005253422107]
- 3 Verbalis JG, Goldsmith SR, Greenberg A, Korzeliuss C, Schrier RW, Sterns RH, Thompson CJ. Diagnosis, evaluation, and treatment of hyponatremia: expert panel recommendations. *Am J Med* 2013; **126**: S1-42 [PMID: 24074529 DOI: 10.1016/j.amjmed.2013.07.006]
- 4 Goldvaser H, Rozen-Zvi B, Yerushalmi R, Gaftor-Gvili A, Lahav M, Shepshelovich D. Malignancy associated SIADH: Characterization and clinical implications. *Acta Oncol* 2016; **55**: 1190-1195 [PMID: 27142293 DOI: 10.3109/0284186X.2016.1170198]
- 5 Swerdlow SH, Campo E, Pileri SA, Harris NL, Stein H, Siebert R, Advani R, Ghielmini M, Salles GA, Zelenetz AD, Jaffe ES. The 2016 revision of the World Health Organization classification of lymphoid neoplasms. *Blood* 2016; **127**: 2375-2390 [PMID: 26980727 DOI: 10.1182/blood-2016-01-643569]
- 6 Crowley RK, Thompson CJ. Syndrome of inappropriate antidiuresis. *Expert Rev Endocrinol Metabol* 2006; **1**: 537-547 [PMID: 30290457 DOI: 10.1586/17446651.1.4.537]
- 7 Kobayashi K, Yokote T, Akioka T, Takubo T, Tsuji M, Hanafusa T. Inappropriate antidiuretic hormone production in diffuse large B-cell lymphoma. *Br J Haematol* 2008; **143**: 2 [PMID: 18513282 DOI: 10.1111/j.1365-2141.2008.07255.x]
- 8 Hirata Y, Yokote T, Nishiwaki U, Tsuji M, Hanafusa T. Syndrome of inappropriate antidiuretic hormone secretion associated with primary cutaneous anaplastic large cell lymphoma. *Br J Haematol* 2012; **157**: 412 [PMID: 22409317 DOI: 10.1111/j.1365-2141.2012.09090.x]
- 9 Zhang J, Yue L, Li YL. Clinical Significance of Peripheral blood EB Virus Detection in NK/T Cell Lymphoma Patients. *Zhongguo Shiyao Xueyexue Zazhi* 2017; **25**: 460-464 [PMID: 28446293 DOI: 10.7534/j.issn.1009-2137.2017.02.027]
- 10 Bartter FC, Schwartz WB. The syndrome of inappropriate secretion of antidiuretic hormone. *Am J Med* 1967; **42**: 790-806 [PMID: 5337379 DOI: 10.1016/0002-9343(67)90096-4]
- 11 Nigro N, Winzler B, Suter-Widmer I, Schuetz P, Arici B, Bally M, Blum CA, Nickel CH, Bingisser R, Bock A, Huber A, Müller B, Christ-Crain M. Evaluation of copeptin and commonly used laboratory parameters for the differential diagnosis of profound hyponatraemia in hospitalized patients: 'The Co-MED Study'. *Clin Endocrinol (Oxf)* 2017; **86**: 456-462 [PMID: 27658031 DOI: 10.1111/cen.13243]
- 12 Dousa TP, Wilson DM. Effects of demethylchlortetracycline on cellular action of antidiuretic hormone in vitro. *Kidney Int* 1974; **5**: 279-284 [PMID: 4368644 DOI: 10.1038/ki.1974.37]
- 13 Verbalis JG, Adler S, Schrier RW, Berl T, Zhao Q, Czerwiec FS; SALT Investigators. Efficacy and safety of oral tolvaptan therapy in patients with the syndrome of inappropriate antidiuretic hormone secretion. *Eur J Endocrinol* 2011; **164**: 725-732 [PMID: 21317283 DOI: 10.1530/EJE-10-1078]
- 14 Verbalis JG, Baldwin EF, Neish PN, Robinson AG. Effect of protein intake and urea on sodium excretion during inappropriate antidiuresis in rats. *Metabolism* 1988; **37**: 46-54 [PMID: 3336285 DOI: 10.1016/0026-0495(88)90028-5]
- 15 Janicic N, Verbalis JG. Evaluation and management of hypo-osmolality in hospitalized patients. *Endocrinol Metab Clin North Am* 2003; **32**: 459-481, vii [PMID: 12800541 DOI: 10.1016/s0889-8529(03)00004-5]
- 16 Shepshelovich D, Leibovitch C, Klein A, Zoldan S, Milo G, Shochat T, Rozen-zvi B, Gaftor-Gvili A, Lahav M. The syndrome of inappropriate antidiuretic hormone secretion: Distribution and characterization according to etiologies. *Eur J Intern Med* 2015; **26**: 819-824 [PMID: 26563934 DOI: 10.1016/j.ejim.2015.10.020]



- 17 Akhtar S, Cheesman E, Jude EB. SIADH and partial hypopituitarism in a patient with intravascular large B-cell lymphoma: a rare cause of a common presentation. *BMJ Case Rep* 2013; **2013**: [PMID: 23362070 DOI: 10.1136/bcr-2012-007147]
- 18 Chubachi A, Miura I, Hatano Y, Ohshima A, Nishinari T, Miura AB. Syndrome of inappropriate secretion of antidiuretic hormone in patients with lymphoma-associated hemophagocytic syndrome. *Ann Hematol* 1995; **70**: 53-55 [PMID: 7827207 DOI: 10.1007/BF01715383]
- 19 Demirkan F, Vural F, Ozsan GH, Ozcan MA, Ozkal S, Undar B. Hemophagocytic syndrome associated with inappropriate secretion of antidiuretic hormone in lymphoma and acute myeloblastic leukemia: report of two cases. *Leuk Lymphoma* 2001; **42**: 1401-1404 [PMID: 11911425 DOI: 10.3109/10428190109097769]
- 20 Morimoto K, Ogihara T, Shiomi T, Awaya N. Intravascular large B-cell lymphoma with preceding syndrome of inappropriate secretion of antidiuretic hormone. *Intern Med* 2007; **46**: 1569-1572 [PMID: 17878644 DOI: 10.2169/internalmedicine.46.0252]
- 21 Polprasert C, Wongjitrat C, Wisedopas N. Case report: severe CMV colitis in a patient with follicular lymphoma after chemotherapy. *J Med Assoc Thai* 2011; **94**: 498-500 [PMID: 21591537]
- 22 Sica S, Cicconi S, Sorà F, Chiusolo P, Piccirillo N, Laurenti L, La Barbera EO, Giordano G, Leone G. Inappropriate antidiuretic hormone secretion after high-dose thiopeta. *Bone Marrow Transplant* 1999; **24**: 571-572 [PMID: 10482945 DOI: 10.1038/sj.bmt.1701922]
- 23 Watabe R, Shibata K, Hirase N, Koderia T, Muta K, Nishimura J, Nawata H. Angiotropic B-cell lymphoma with hemophagocytic syndrome associated with syndrome of inappropriate secretion of antidiuretic hormone. *Ann Hematol* 2000; **79**: 581-584 [PMID: 11100751 DOI: 10.1007/s002770000188]
- 24 Zhu CG, Zhang QZ, Zhu M, Zhai QL, Liang XY, Shao ZH, Ver Hoeve EC, Qu HQ. A case report of syndrome of inappropriate antidiuretic hormone secretion with Castleman's disease and lymphoma. *BMC Endocr Disord* 2013; **13**: 19 [PMID: 23734852 DOI: 10.1186/1472-6823-13-19]
- 25 Phan TG, Manoharan A, Pryor D. Relapse of central nervous system Burkitt's lymphoma presenting as Guillain-Barre syndrome and syndrome of inappropriate ADH secretion. *Aust N Z J Med* 1998; **28**: 223-224 [PMID: 9612540 DOI: 10.1111/j.1445-5994.1998.tb02982.x]
- 26 Brodmann S, Gyr Klaas E, Cathomas R, Girardi V, von Moos R. Severe hyponatremia in a patient with mantle cell lymphoma treated with bortezomib: a case report and review of the literature. *Onkologie* 2007; **30**: 651-654 [PMID: 18063878 DOI: 10.1159/000109979]
- 27 Ohara F, Kobayashi Y, Akabane D, Maruyama D, Tanimoto K, Kim SW, Watanabe T, Tobinai K. Abdominal pain and syndrome of inappropriate antidiuretic hormone secretion as a manifestation of visceral varicella zoster virus infection in a patient with non-Hodgkin's lymphoma. *Am J Hematol* 2007; **82**: 416 [PMID: 17133427 DOI: 10.1002/ajh.20827]
- 28 Onishi C, Ikejiri F, Kawakami K, Miyake T, Kumanomido S, Inoue M, Takahashi T, Tanaka J, Yamamoto M, Sugimoto T, Suzumiya J. Asian variant of intravascular large B cell lymphoma causes patients to frequently develop the syndrome of inappropriate antidiuretic hormone secretion. *Ann Hematol* 2011; **90**: 1293-1297 [PMID: 21340719 DOI: 10.1007/s00277-011-1196-1]
- 29 Bockorny B, Dasanu CA. Syndrome of inappropriate antidiuretic hormone secretion due to marginal zone lymphoma: responding to rituximab. *Clin Lymphoma Myeloma Leuk* 2012; **12**: 220-222 [PMID: 22578816 DOI: 10.1016/j.clml.2012.03.001]
- 30 Nishiwaki U, Hirata Y, Yokote T, Iwaki K, Tsuji M, Hanafusa T. Syndrome of inappropriate antidiuretic hormone secretion associated with adult T-cell leukaemia/lymphoma. *Br J Haematol* 2014; **166**: 155 [PMID: 24735057 DOI: 10.1111/bjh.12891]
- 31 Sumiyoshi H, Kobayashi Y, Makita S, Tatsuno M, Kitahara H, Fukuhara S, Munakata W, Suzuki T, Maruyama D, Tobinai K. Viscerally disseminated herpes zoster presenting abdominal pain, siadh, and skin rash in a follicular lymphoma patient. *Ann Oncol* 2014; **25** Suppl 5: v97-98 [DOI: 10.1093/annonc/mdl436.102]
- 32 Itaya M, Nagata S, Ogino S, Ohura M, Kuriki K, Fukaya T, Ohta N, Sugiyama K, Oki Y, Ikegaya N, Hishida A. A case of primary adrenal diffuse large B cell lymphoma presenting with severe hyponatremia. *CEN Case Rep* 2016; **5**: 91-94 [PMID: 28509172 DOI: 10.1007/s13730-015-0200-3]
- 33 Shimizu N, Tanaka S, Watanabe Y, Tokuyama W, Hiruta N, Ohwada C, Sakaida E, Nakaseko C, Tatsuno I. Syndrome of Inappropriate Antidiuretic Hormone Secretion in a Patient with Mucosa-associated Lymphoid Tissue Lymphoma. *Intern Med* 2017; **56**: 3225-3229 [PMID: 29021471 DOI: 10.2169/internalmedicine.9048-17]
- 34 Sun Y, Lin S, Lin KY, Li WM, Xu W, Zeng LY. Extranodal nasal type natural killer/T-cell lymphoma with refractory hyponatremia: A case report and literature review. *Tumor* 2018; **38**: 140-144
- 35 Liamis G, Filippatos TD, Elisaf MS. Electrolyte disorders associated with the use of anticancer drugs. *Eur J Pharmacol* 2016; **777**: 78-87 [PMID: 26939882 DOI: 10.1016/j.ejphar.2016.02.064]
- 36 Gupta M, Stenson M, O'Byrne M, Maurer MJ, Habermann T, Cerhan JR, Weiner GW, Witzig TE. Comprehensive serum cytokine analysis identifies IL-1RA and soluble IL-2Rα as predictors of event-free survival in T-cell lymphoma. *Ann Oncol* 2016; **27**: 165-172 [PMID: 26487586 DOI: 10.1093/annonc/mdv486]
- 37 Nakayama S, Yokote T, Kobayashi K, Takubo T, Tsuji M, Hanafusa T. Multiple cytokine-producing peripheral T-cell lymphoma. *Br J Haematol* 2009; **146**: 125 [PMID: 19120347 DOI: 10.1111/j.1365-2141.2008.07542.x]
- 38 Ohno T, Ueda Y, Nagai K, Takahashi T, Konaka Y, Takamatsu T, Suzuki T, Sasada M, Uchiyama T; Kyoto University Hematology/Oncology Study Group. The serum cytokine profiles of lymphoma-associated hemophagocytic syndrome: a comparative analysis of B-cell and T-cell/natural killer cell lymphomas. *Int J Hematol* 2003; **77**: 286-294 [PMID: 12731674 DOI: 10.1007/bf02983788]
- 39 Mastorakos G, Weber JS, Magiakou MA, Gunn H, Chrousos GP. Hypothalamic-pituitary-adrenal axis activation and stimulation of systemic vasopressin secretion by recombinant interleukin-6 in humans: potential implications for the syndrome of inappropriate vasopressin secretion. *J Clin Endocrinol Metab* 1994; **79**: 934-939 [PMID: 7962300 DOI: 10.1210/jc.79.4.934]
- 40 Cohen JI, Kimura H, Nakamura S, Ko YH, Jaffe ES. Epstein-Barr virus-associated lymphoproliferative disease in non-immunocompromised hosts: a status report and summary of an international meeting, 8-9 September 2008. *Ann Oncol* 2009; **20**: 1472-1482 [PMID: 19515747 DOI: 10.1093/annonc/mdp064]
- 41 Dunleavy K, Roschewski M, Wilson WH. Lymphomatoid granulomatosis and other Epstein-Barr virus associated lymphoproliferative processes. *Curr Hematol Malig Rep* 2012; **7**: 208-215 [PMID: 22814713 DOI: 10.1007/s11899-012-0132-3]
- 42 Thompson MP, Kurzrock R. Epstein-Barr virus and cancer. *Clin Cancer Res* 2004; **10**: 803-821 [PMID: 14871955 DOI: 10.1158/1078-0432.Ccr-0670-3]
- 43 Shannon-Lowe C, Rickinson AB, Bell AI. Epstein-Barr virus-associated lymphomas. *Philos Trans R Soc Lond B Biol Sci* 2017; **372**: [PMID: 28893938 DOI: 10.1098/rstb.2016.0271]
- 44 Cesarman E, Mesri EA. Virus-associated lymphomas. *Curr Opin Oncol* 1999; **11**: 322-332 [PMID: 10505767 DOI: 10.1097/00001622-199909000-00002]
- 45 Dogan A, Attygalle AD, Kyriakou C. Angioimmunoblastic T-cell lymphoma. *Br J Haematol* 2003; **121**: 681-691 [PMID: 12780782 DOI: 10.1046/j.1365-2141.2003.04335.x]
- 46 Carbone A, Gloghini A, Dotti G. EBV-associated lymphoproliferative disorders: classification and treatment. *Oncologist* 2008; **13**: 577-585 [PMID: 18515742 DOI: 10.1634/theoncologist.2008-0036]
- 47 Li X, Li G, Gao Z, Zhou X, Zhu X. The relative frequencies of lymphoma subtypes in china: a nationwide study of 10002 cases by the chinese lymphoma study group. *Ann Oncol* 2011; **22**: 141
- 48 Li S, Feng X, Li T, Zhang S, Zuo Z, Lin P, Konoplev S, Bueso-Ramos CE, Vega F, Medeiros LJ, Yin CC. Extranodal NK/T-cell lymphoma, nasal type: a report of 73 cases at MD Anderson Cancer

- Center. *Am J Surg Pathol* 2013; **37**: 14-23 [PMID: 23232851 DOI: 10.1097/PAS.0b013e31826731b5]
- 49 **Kim GE**, Cho JH, Yang WI, Chung EJ, Suh CO, Park KR, Hong WP, Park IY, Hahn JS, Roh JK, Kim BS. Angiocentric lymphoma of the head and neck: patterns of systemic failure after radiation treatment. *J Clin Oncol* 2000; **18**: 54-63 [PMID: 10623693 DOI: 10.1200/jco.2000.18.1.54]
- 50 **Kim WS**, Song SY, Ahn YC, Ko YH, Baek CH, Kim DY, Yoon SS, Lee HG, Kang WK, Lee HJ, Park CH, Park K. CHOP followed by involved field radiation: is it optimal for localized nasal natural killer/T-cell lymphoma? *Ann Oncol* 2001; **12**: 349-352 [PMID: 11332147 DOI: 10.1023/a:1011144911781]
- 51 **Cheung MM**, Chan JK, Lau WH, Ngan RK, Foo WW. Early stage nasal NK/T-cell lymphoma: clinical outcome, prognostic factors, and the effect of treatment modality. *Int J Radiat Oncol Biol Phys* 2002; **54**: 182-190 [PMID: 12182990 DOI: 10.1016/s0360-3016(02)02916-4]
- 52 **Lee J**, Kim CY, Park YJ, Lee NK. Sequential chemotherapy followed by radiotherapy versus concurrent chemoradiotherapy in patients with stage I / II extranodal natural killer/T-cell lymphoma, nasal type. *Blood Res* 2013; **48**: 274-281 [PMID: 24466552 DOI: 10.5045/br.2013.48.4.274]

**P- Reviewer:** Akbulut S, Chowdhury FH, Dasgupta S, Ohashi N, Vaudo G, Vidal EIO **S- Editor:** Ma RY  
**L- Editor:** Wang TQ **E- Editor:** Song H





Published by **Baishideng Publishing Group Inc**  
7901 Stoneridge Drive, Suite 501, Pleasanton, CA 94588, USA  
Telephone: +1-925-223-8242  
Fax: +1-925-223-8243  
E-mail: [bpgoffice@wjgnet.com](mailto:bpgoffice@wjgnet.com)  
Help Desk: <http://www.f6publishing.com/helpdesk>  
<http://www.wjgnet.com>

