

World Journal of *Clinical Cases*

World J Clin Cases 2019 December 26; 7(24): 4172-4425



**REVIEW**

- 4172** Polyunsaturated fatty acids and DNA methylation in colorectal cancer
Moradi Sarabi M, Mohammadrezaei Khorramabadi R, Zare Z, Eftekhari E

ORIGINAL ARTICLE**Retrospective Study**

- 4186** Impact of resection margins on long-term survival after pancreaticoduodenectomy for pancreatic head carcinoma
Li CG, Zhou ZP, Tan XL, Gao YX, Wang ZZ, Liu Q, Zhao ZM
- 4196** Arthroscopy combined with unicompartmental knee arthroplasty for treatment of isolated unicompartmental knee arthritis: A long-term comparison
Wang HR, Li ZL, Li J, Wang YX, Zhao ZD, Li W
- 4208** Intact, pie-crusting and repairing the posterior cruciate ligament in posterior cruciate ligament-retaining total knee arthroplasty: A 5-year follow-up
Ma DS, Wen L, Wang ZW, Zhang B, Ren SX, Lin Y
- 4218** Community-acquired pneumonia complicated by rhabdomyolysis: A clinical analysis of 11 cases
Zhao B, Zheng R

Clinical Trials Study

- 4226** Dissection and ligation of the lateral circumflex femoral artery is not necessary when using the direct anterior approach for total hip arthroplasty
Zhao GY, Wang YJ, Xu NW, Liu F

Observational Study

- 4234** Expression of interleukin-32 in bone marrow of patients with myeloma and its prognostic significance
Wang G, Ning FY, Wang JH, Yan HM, Kong HW, Zhang YT, Shen Q

Randomized Controlled Trial

- 4245** Effect of different types of laryngeal mask airway placement on the right internal jugular vein: A prospective randomized controlled trial
Zhang JJ, Qu ZY, Hua Z, Zuo MZ, Zhang HY

SYSTEMATIC REVIEW

- 4254** Chronic pain, posttraumatic stress disorder, and opioid intake: A systematic review
López-Martínez AE, Reyes-Pérez Á, Serrano-Ibáñez ER, Esteve R, Ramírez-Maestre C

CASE REPORT

- 4270 Acute appendicitis in a patient after a uterus transplant: A case report
Kristek J, Kudla M, Chlupac J, Novotny R, Mirejovsky T, Janousek L, Fronek J
- 4277 Pneumococcal infection transmission between family members with congenital asplenia: A case report
Shibata J, Hiramatsu K, Kenzaka T, Kato T
- 4285 Successful treatment of warfarin-induced skin necrosis using oral rivaroxaban: A case report
Kamada M, Kenzaka T
- 4292 Simultaneous *Paragonimus* infection involving the breast and lung: A case report
Oh MY, Chu A, Park JH, Lee JY, Roh EY, Chai YJ, Hwang KT
- 4299 Isolated peritoneal lymphomatosis defined as post-transplant lymphoproliferative disorder after a liver transplant: A case report
Kim HB, Hong R, Na YS, Choi WY, Park SG, Lee HJ
- 4307 Three-dimensional image simulation of primary diaphragmatic hemangioma: A case report
Chu PY, Lin KH, Kao HL, Peng YJ, Huang TW
- 4314 Natural orifice specimen extraction with laparoscopic radical gastrectomy for distal gastric cancer: A case report
Sun P, Wang XS, Liu Q, Luan YS, Tian YT
- 4321 Huge brown tumor of the rib in an unlocatable hyperparathyroidism patient with “self-recovered” serum calcium and parathyroid hormone: A case report
Wang WD, Zhang N, Qu Q, He XD
- 4327 Percutaneous management of atrium and lung perforation: A case report
Zhou X, Ze F, Li D, Li XB
- 4334 Epstein-Barr virus-positive post-transplant lymphoproliferative disorder presenting as hematochezia and enterobrosis in renal transplant recipients in China: A report of two cases
Sun ZJ, Hu XP, Fan BH, Wang W
- 4342 Postoperative multidrug-resistant *Acinetobacter baumannii* meningitis successfully treated with intravenous doxycycline and intraventricular gentamicin: A case report
Wu X, Wang L, Ye YZ, Yu H
- 4349 Reconstruction of massive skin avulsion of the scrota and penis by combined application of dermal regeneration template (Pelnac) and split-thickness skin graft with vacuum-assisted closure: A case report
Fang JJ, Li PF, Wu JJ, Zhou HY, Xie LP, Lu H

- 4355** Multisystem smooth muscle dysfunction syndrome in a Chinese girl: A case report and review of the literature
Chen SN, Wang YQ, Hao CL, Lu YH, Jiang WJ, Gao CY, Wu M
- 4366** Kidney inflammatory myofibroblastic tumor masquerading as metastatic malignancy: A case report and literature review
Zhang GH, Guo XY, Liang GZ, Wang Q
- 4377** Hydroxychloroquine-induced renal phospholipidosis resembling Fabry disease in undifferentiated connective tissue disease: A case report
Wu SZ, Liang X, Geng J, Zhang MB, Xie N, Su XY
- 4384** Spontaneous ovarian hyperstimulation syndrome: Report of two cases
Gui J, Zhang J, Xu WM, Ming L
- 4391** Castleman disease in the hepatic-gastric space: A case report
Xu XY, Liu XQ, Du HW, Liu JH
- 4398** KIT and platelet-derived growth factor receptor α wild-type gastrointestinal stromal tumor associated with neurofibromatosis type 1: Two case reports
Kou YW, Zhang Y, Fu YP, Wang Z
- 4414** Isolated elevated aspartate aminotransferase in an asymptomatic woman due to macro-aspartate aminotransferase: A case report
Zhan MR, Liu X, Zhang MY, Niu JQ
- 4420** Rehabilitation of anterior pituitary dysfunction combined with extrapontine myelinolysis: A case report
Yang MX, Chen XN

ABOUT COVER

Editorial Board Member of *World Journal of Clinical Cases*, Ashu Seith Bhalla, MD, Professor, Department of Radiodiagnosis, All India Institute of Medical Sciences, New Delhi 110029, India

AIMS AND SCOPE

The primary aim of *World Journal of Clinical Cases* (WJCC, *World J Clin Cases*) is to provide scholars and readers from various fields of clinical medicine with a platform to publish high-quality clinical research articles and communicate their research findings online.

WJCC mainly publishes articles reporting research results and findings obtained in the field of clinical medicine and covering a wide range of topics, including case control studies, retrospective cohort studies, retrospective studies, clinical trials studies, observational studies, prospective studies, randomized controlled trials, randomized clinical trials, systematic reviews, meta-analysis, and case reports.

INDEXING/ABSTRACTING

The WJCC is now indexed in PubMed, PubMed Central, Science Citation Index Expanded (also known as SciSearch®), and Journal Citation Reports/Science Edition. The 2019 Edition of Journal Citation Reports cites the 2018 impact factor for WJCC as 1.153 (5-year impact factor: N/A), ranking WJCC as 99 among 160 journals in Medicine, General and Internal (quartile in category Q3).

RESPONSIBLE EDITORS FOR THIS ISSUE

Responsible Electronic Editor: Ji-Hong Liu

Proofing Production Department Director: Yun-Xiaojuan Wu

NAME OF JOURNAL

World Journal of Clinical Cases

ISSN

ISSN 2307-8960 (online)

LAUNCH DATE

April 16, 2013

FREQUENCY

Semimonthly

EDITORS-IN-CHIEF

Dennis A Bloomfield, Bao-Gan Peng, Sandro Vento

EDITORIAL BOARD MEMBERS

<https://www.wjgnet.com/2307-8960/editorialboard.htm>

EDITORIAL OFFICE

Jin-Lei Wang, Director

PUBLICATION DATE

December 26, 2019

COPYRIGHT

© 2019 Baishideng Publishing Group Inc

INSTRUCTIONS TO AUTHORS

<https://www.wjgnet.com/bpg/gerinfo/204>

GUIDELINES FOR ETHICS DOCUMENTS

<https://www.wjgnet.com/bpg/GerInfo/287>

GUIDELINES FOR NON-NATIVE SPEAKERS OF ENGLISH

<https://www.wjgnet.com/bpg/gerinfo/240>

PUBLICATION MISCONDUCT

<https://www.wjgnet.com/bpg/gerinfo/208>

ARTICLE PROCESSING CHARGE

<https://www.wjgnet.com/bpg/gerinfo/242>

STEPS FOR SUBMITTING MANUSCRIPTS

<https://www.wjgnet.com/bpg/GerInfo/239>

ONLINE SUBMISSION

<https://www.f6publishing.com>

Retrospective Study

Impact of resection margins on long-term survival after pancreaticoduodenectomy for pancreatic head carcinoma

Cheng-Gang Li, Zhi-Peng Zhou, Xiang-Long Tan, Yuan-Xing Gao, Zi-Zheng Wang, Qu Liu, Zhi-Ming Zhao

ORCID number: Cheng-Gang Li (0000-0001-7990-1300); Zhi-Peng Zhou (0000-0001-8881-1972); Xiang-Long Tan (0000-0003-2185-2416); Yuan-Xing Gao (0000-0001-6094-9793); Zi-Zheng Wang (0000-0002-6104-7692); Qu Liu (0000-0001-7486-3288); Zhi-Ming Zhao (0000-0003-2374-0856).

Author contributions: Li CG and Zhou ZP contributed equally to this work, and considered as co-first authors; Li CG and Zhou ZP analyzed and interpreted data and wrote the article; Tan XL, Gao YX, Wang ZZ and Liu Q drafted the work and collected the data; Zhao ZM designed the study and revised the articles for important intellectual content.

Institutional review board

statement: The study was approved by the Institutional Review Board of the Chinese People's Liberation Army General Hospital (S2016-098-02).

Informed consent statement:

Informed consent was signed by all patients in the study.

Conflict-of-interest statement: The authors declare having no conflicts of interest.

Data sharing statement: Due to the sensitive nature of the questions asked in this study, survey respondents were assured raw data would remain confidential and would not be shared.

Open-Access: This article is an open-access article which was selected by an in-house editor and fully peer-reviewed by external

Cheng-Gang Li, Zhi-Peng Zhou, Xiang-Long Tan, Yuan-Xing Gao, Zi-Zheng Wang, Qu Liu, Zhi-Ming Zhao, Second Department of Hepatobiliary Surgery, Chinese People's Liberation Army General Hospital, Beijing 100853, China

Corresponding author: Zhi-Ming Zhao, MD, PhD, Associate Professor, Second Department of Hepatobiliary Surgery, Chinese People's Liberation Army General Hospital, 28 Fuxing Road, Beijing 100853, China. zhimingzhao616@126.com

Telephone: +86-10-66937584

Fax: +86-10-66937584

Abstract

BACKGROUND

The impact of resection margin status on long-term survival after pancreaticoduodenectomy (PD) for patients with pancreatic head carcinoma remains controversial and depends on the method used in the histopathological study of the resected specimens. This study aimed to examine the impact of resection margin status on the long-term overall survival of patients with pancreatic head carcinoma after PD using the tumor node metastasis standard.

METHODS

Consecutive patients with pancreatic head carcinoma who underwent PD at the Chinese People's Liberation Army General Hospital between May 2010 and May 2016 were included. The impact of resection margin status on long-term survival was retrospectively analyzed.

RESULTS

Among the 124 patients, R0 resection was achieved in 85 patients (68.5%), R1 resection in 38 patients (30.7%) and R2 resection in 1 patient (0.8%). The 1- and 3-year overall survival (OS) rates were significantly higher for the patients who underwent R0 resection than the rates for those who underwent R1 resection (1-year OS rates: 69.4% vs 53.0%; 3-year OS rates: 26.9% vs 11.7%). Multivariate analysis showed that resection margin status and venous invasion were significant risk factors for OS.

CONCLUSION

Resection margin was an independent risk factor for OS for patients with pancreatic head carcinoma after PD. R0 resection was associated with significantly better OS after surgery.

Key words: Pancreatic head cancer; Pancreaticoduodenectomy; R0 resection margin;

reviewers. It is distributed in accordance with the Creative Commons Attribution Non Commercial (CC BY-NC 4.0) license, which permits others to distribute, remix, adapt, build upon this work non-commercially, and license their derivative works on different terms, provided the original work is properly cited and the use is non-commercial. See: <http://creativecommons.org/licenses/by-nc/4.0/>

Manuscript source: Unsolicited manuscript

Received: September 5, 2019

Peer-review started: September 5, 2019

First decision: October 24, 2019

Revised: October 31, 2019

Accepted: November 20, 2019

Article in press: November 20, 2019

Published online: December 26, 2019

P-Reviewer: Roman ID, Tinsley A

S-Editor: Wang JL

L-Editor: Filipodia

E-Editor: Qi LL



Overall survival; Disease-free survival; R1 resection

©The Author(s) 2019. Published by Baishideng Publishing Group Inc. All rights reserved.

Core tip: This study aimed to examine the impact of resection margin status on the long-term overall survival of patients with pancreatic head carcinoma after pancreaticoduodenectomy using the tumor node metastasis standard. We found the resection margin was an independent risk factor for overall survival for patients with pancreatic head carcinoma after pancreaticoduodenectomy. R0 resection was associated with significantly better overall survival after surgery. It is suggested that surgeons should perform radical resection for patients with pancreatic head cancer as much as possible.

Citation: Li CG, Zhou ZP, Tan XL, Gao YX, Wang ZZ, Liu Q, Zhao ZM. Impact of resection margins on long-term survival after pancreaticoduodenectomy for pancreatic head carcinoma. *World J Clin Cases* 2019; 7(24): 4186-4195

URL: <https://www.wjgnet.com/2307-8960/full/v7/i24/4186.htm>

DOI: <https://dx.doi.org/10.12998/wjcc.v7.i24.4186>

INTRODUCTION

Pancreatic carcinoma is well-known to have a poor prognosis, and R0 resection is the only treatment that provides the possibility of a cure. However, recurrence and metastasis are frequent after surgery, and the 5-year overall survival (OS) rate is approximately 6%^[1,2]. The size and location of the tumor, resection margin status, lymphatic metastasis, neural invasion and tumor differentiation have been reported to positively correlate with postoperative long-term OS^[3-5]. In recent years, the status of the resection margin has received much attention, but controversies still exist.

At present, there are no universally accepted histopathological examination procedures and standards used to evaluate resection margins for resected specimens after pancreaticoduodenectomy (PD). The common criteria used to evaluate resection margins include tumor node metastasis (TNM) staging by the Union for International Cancer Control, the Japan Pancreas Society reporting guideline and the British Royal College of Pathologists standards^[6-8]. While the definition used by the Union for International Cancer Control for R1 resection in the United States is microscopic evidence of tumor involvement of the resection margin^[6], the British Royal College of Pathologists in the United Kingdom defined it as tumor involvement within 1 mm of the resection margin^[8]. The impact of resection margin status on the long-term OS of patients differs with different evaluation procedures and standards. Some studies suggested that long-term OS for patients with R0 resection was significantly better than that for patients with R1 resection, while other studies indicated no significant differences^[3-5,9-14].

This study aimed to investigate the impact of resection margin status on long-term OS in patients with pancreatic head carcinoma after PD based on the TNM standard.

MATERIALS AND METHODS

Patient selection

Consecutive patients who underwent PD for pancreatic head carcinoma with curative intent by a single team of surgeons at the Chinese People's Liberation Army General Hospital between May 2010 and May 2016 were included in this study. Patients who died of complications in the perioperative period were not included because this study only focused on long-term OS. No patients received chemotherapy or radiotherapy before surgery. Patients with periampullary cancer, distal common bile duct cancer and pancreatic neuroendocrine tumors were also excluded. Postoperative chemotherapy consisting of gemcitabine combined with abraxane and/or external irradiation was not routinely given even for patients with R1 resection. The pros and cons of chemotherapy were discussed with the patients, and only those who accepted chemotherapy received it.

Follow-up visits were conducted once every 1-2 mo in the first two years after

surgery, once every 3-6 mo after surgery for years 3-5 and thereafter once every 6-12 mo. At each follow-up visit, after history taking and physical examination of the patient, laboratory blood tests and computed tomography were routinely performed. This study was approved by the Institutional Review Board of the Chinese People's Liberation Army General Hospital. The study was registered with ResearchRegistry.com, and the work has been reported in line with the STROCSS criteria^[15].

Surgical treatment

The surgical procedures included pylorus-preserving PD and PD. Stents were routinely placed across the pancreaticojejunostomy for external drainage and were removed after 4 wk. The range of lymph node dissection included lymph node groups 5, 8, 12, 13, 14 and 17. When the tumor had invaded the portal/superior mesenteric vein, venous resection and reconstruction were performed in selected patients. No patients in this study had combined resection and reconstruction of the portal/superior mesenteric vein and superior mesenteric artery.

Pathological examination

The resected specimens were fixed in formalin for 24-48 h. The surgeon and a pathologist identified the orientation of the resected specimen together. The pathologist then prepared and stained specimen slices and studied them microscopically. The resection margins of the specimens included the gastric, duodenal, choledochal and pancreatic cut ends and included the pancreatic groove for the portal/superior mesenteric vein and artery and the surrounding connective tissue layers of the pancreas. The cut ends of the portal/superior mesenteric vein were also studied in cases involving resection of these vessels. Based on the TNM standards, R1 resection indicated that residual tumor cells were present at any resection margin under microscopic examination, and R0 resection indicated no residual tumor at any resection margins^[6].

Statistical analysis

The primary outcome was OS. The chi-square test or Fisher's exact test was performed to evaluate the correlation between the resection margin status and categorical clinicopathological characteristics. Student's *t* test was used to evaluate continuous variables. OS was estimated using the Kaplan-Meier method, and comparison of OS between subgroups was analyzed using the log-rank test. Univariate and multivariate analyses were performed using the Cox proportional hazards regression model for potential prognostic factors of OS. All reported *P* values were 2-sided. A *P* value of < 0.05 was considered statistically significant. All analyses were performed with the IBM SPSS statistical software, version 20 (SPSS, Chicago, IL, United States).

RESULTS

Patient characteristics and pathology of pancreatic head carcinoma

For the 124 patients who underwent PD, the pathological diagnosis and tumor staging were based on the Eighth Version of the Union for International Cancer Control Classification (Table 1). The pathological diagnoses were pancreatic adenocarcinoma in 118 patients, pancreatic adenocarcinoma plus mucinous adenocarcinoma in 5 patients and pancreatic adenosquamous carcinoma in 1 patient. According to the TNM standards, 59 patients were in stage I, 57 patients were in stage II, 7 patients were in stage III, and 1 patient was in stage IV. The numbers of R0, R1 and R2 resections were 85, 38 and 1, respectively. The median survival time of all patients was 16 mo (range: 7-66 mo).

Clinical and pathological characteristics associated with resection margins

The clinical and pathological characteristics of the patients in the R0 and R1 resection groups are summarized in Table 2. There were no significant differences in age, sex, tumor size, bile duct invasion, duodenal invasion, nerve plexus invasion, lymph node metastasis, venous invasion, frequency of postoperative radiotherapy and chemotherapy or mean hospital stay between the R0 (*n* = 85) and R1 groups (*n* = 38).

Survival analysis

As the number of patients with R2 resection was small (*n* = 1), the patient was excluded from the survival analysis. The results of multivariate analysis on factors influencing OS are shown in Table 3. The mean OS of the 123 patients was 20.6 mo. Kaplan-Meier survival analyses and log-rank tests on the impact of factors on OS,

Table 1 Patient demographics

Clinicopathologic features	Value
Mean age (range), yr	59 (38-79)
Sex, M/F	76/48
Histopathologic diagnosis	
Well differentiated	1
Moderately differentiated	74
Poorly differentiated	49
Adenocarcinoma	118
Adenocarcinoma + mucinouscarcinoma	5
Adenosquamous carcinoma	1
Stage (Union International Contre le Cancer, 8 th ed)	
I	59
II	57
III	7
IV	1
Resection margin status	
R0	85
R1	38
R2	1
Median overall survival (range) in mo	16 (7-66)

including age, sex, tumor size, degree of differentiation, margin status, bile duct invasion, duodenal invasion, nerve plexus invasion, lymph node metastasis, venous invasion, postoperative chemotherapy and radiotherapy, intraoperative blood loss and average hospitalization time showed only R1 resection (hazard ratio = 1.773; 95% confidence interval: 1.149-2.736) and venous invasion (hazard ratio = 2.771; 95% confidence interval: 1.447-5.304) to be significantly correlated with a decrease in postoperative OS. The mean OS rates in patients who underwent R0 and R1 resections were 22.8 mo and 15.5 mo, respectively ($\chi^2 = 7.287$, $P = 0.007$) (Figure 1). The 1-year and 3-year survival rates were significantly higher in patients who underwent R0 resection than the rates in those who underwent R1 resection (1-year survival rate: 69.4% *vs* 53.0%; 3-year survival rate: 26.9% *vs* 11.7%). The mean OS rates in patients without and with venous invasion were 21.5 and 11.6 mo, respectively ($\chi^2 = 10.983$, $P = 0.001$).

DISCUSSION

Advances in surgical techniques, a better understanding of anatomy and improvements in technology have considerably increased the safety and R0 resection rates for PD^[16-18]. However, in the past decades long-term OS after resectional surgery with curative intent has not significantly improved. This led to the focus on factors influencing long-term survival, and resection margin status is one of the important factors.

At present, there is still no universally accepted and standardized technique to section a resected specimen obtained after PD for histological studies under the microscope. The accepted standard for evaluation of resection margins includes the TNM, Japan Pancreas Society and British Royal College of Pathologists standards^[6-8]. Even the definition of R1 resection differs^[6,8]. Based on different standards for resection margin, postoperative long-term survival in patients with pancreatic head cancer varies (Table 4). While some studies suggested that patients with R0 resection have better postoperative OS than R1 resection, other studies concluded that there were no differences in OS between R0 and R1 resection^[19-23].

This study investigated the impact of resection margin status on postoperative long-term OS in patients using the TNM standard. The results suggested that patients with R0 resection had significantly better postoperative long-term OS than that of patients with R1 resection. The other independent factor influencing long-term OS was venous invasion. Other standard clinical parameters, such as age, sex, tumor size, differentiation degree, bile duct invasion, duodenal invasion, nerve plexus invasion,

Table 2 Factors associated with microscopically positive resection margin (R2 resection was excluded)

	No. patients		P value
	R0	R1	
Total patients	85	38	
Age in yr			0.192
≥ 60	47	22	
< 60	39	15	
Sex			0.719
M	53	23	
F	33	14	
Tumor size in cm			1.000
< 2	6	3	
≥ 2	80	34	
Bile duct invasion			0.486
Negative	28	15	
Positive	58	23	
Duodenal invasion			0.480
Negative	40	12	
Positive	46	25	
Nerve plexus invasion			0.848
Negative	36	13	
Positive	50	24	
Lymph node metastasis			0.562
Negative	54	21	
Positive	32	16	
Venous invasion			0.435
Negative	79	32	
Positive	7	5	
Postoperative chemotherapy			0.180
No	45	25	
Yes	41	12	
Postoperative radiotherapy			0.354
No	67	44	
Yes	18	4	
Operation blood loss in mL	251.61 ± 173.94	299.23 ± 216.67	0.195
Hospital stay in d	16.70 ± 7.98	16.31 ± 5.65	0.786

lymph node metastasis and intraoperative blood loss, were not found to be associated with postoperative long-term OS in our study.

The professional knowledge and experience of pathologists have a significant influence on determining the resection margin status. It is difficult for a pathologist on his own to orientate a resected specimen after PD and to decide where to section the sample to microscopically study resection margin status, which is an important factor for distinguishing R0 from R1 resection in pancreatic head cancer^[24]. At our hospital, after the surgical specimens are fixed in formalin, the operating surgeon and a pathologist would orientate the sample together. The pathologist then obtains, stains and examines tissue slices at the appropriate sites to look at the resection margin status. The resection margins of the resected specimen routinely include the gastric, duodenal, choledochal and pancreatic cut ends; margins of the pancreatic groove for the portal/superior mesenteric vein and artery; the connective tissue layers surrounding the pancreas; and in appropriate cases, the cut ends of resected ends of the portal/superior mesenteric vein. Such samples obtained together by the pathologists and the operating surgeons provided an accurate method to define the significant resection margins.

The connective tissues on the posterior side of the pancreatic head and around the

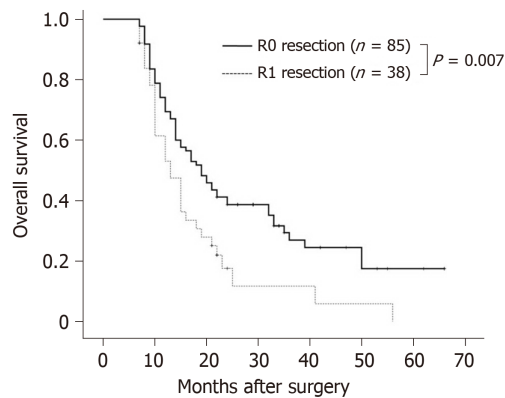


Figure 1 Kaplan-Meier cumulative survival curves according to the resection margin status. The median survival for 85 patients with R0 resection was 22.8 mo, which was significantly longer ($P = 0.007$) than that for 38 patients with R1 resection (15.5 mo).

portal/superior mesenteric vein, superior mesenteric artery, celiac axis and abdominal aorta are the common sites of residual tumor cells left after PD and present as R1 resection margins on microscopic examination^[10,25-27]. To achieve higher R0 resection rates, complete resection of the mesopancreas^[28,29], clearance of the mesopancreas triangle^[30] and even resection of the mesopancreatoduodenum^[31] have been proposed.

We must note that this study had limitations. First, our sample size was small, and patients who died of complications in the perioperative period were not included because this study focused only on long-term OS. Second, the follow-up isolation time was too long, which would affect the accuracy of overall survival. Future studies will be required to determine the impact of resection margin status on the long-term overall survival of patients with pancreatic head carcinoma after PD in a larger sample population.

This study suggested that patients with R0 resection had significantly better postoperative long-term OS than that of patients with R1 resection. Venous invasion was an independent factor influencing survival. Adequate resection to achieve R0 resection can improve postoperative long-term OS for patients with pancreatic head cancer.

Table 3 Median survival of patients who underwent pancreaticoduodenectomy for pancreatic head adenocarcinoma (R2 resection was excluded)

Prognostic variables	Univariate			Multivariate		
	HR	95%CI	P value	HR	95%CI	P value
Age in yr						
≥ 60	1.000	-	0.218			
< 60	0.770	0.508-1.167				
Sex						
M	1.000	-	0.959			
F	0.995	0.807-1.226				
Tumor size in cm						
≥ 2	1.000	-	0.140			
< 2	0.507	0.206-1.251				
Differentiation degree						
Poor	1.000	-	0.791			
Well + Middle	0.944	0.619-1.442				
Margin status						
R0	1.000	-	0.010 ¹	1.000		0.033 ¹
R1	1.773	1.149-2.736		1.632	1.041-2.529	
Bile duct invasion						
Negative	1.000	-	0.654			
Positive	1.100	0.724-1.677				
Duodenal invasion						
Negative	1.000	-	0.415			
Positive	1.188	0.785-1.796				
Nerve plexus invasion						
Negative	1.000	-	0.484			
Positive	1.159	0.766-1.754				
Lymph node metastasis						
Negative	1.000	-	0.238			
Positive	1.285	0.847-1.947				
Venous invasion						
Negative	1.000	-	0.002 ¹	1.000		0.010 ¹
Positive	2.771	1.447-5.304		2.395	1.237-4.636	
Postop. chemotherapy			0.427			
No	1.000	-				
Yes	0.846	0.561-1.277				
Postop. radiotherapy			0.944			
No	1.000	-				
Yes	1.018	0.624-1.660				
Op. blood loss (100 mL)	1.001	1.000-1.002	0.081			
Postop. hospital stay	1.026	0.999-1.054	0.057			

¹Statistically significant. HR: Hazard ratio; CI: Confidence interval.

Table 4 Summary of studies evaluating the impact of margin status on survival

Ref.	R1/R2 patients, n (%)	Resection status	Median R1/R2 survival in mo	Median R0 survival in mo
Podda <i>et al</i> ^[19] , 2017	34 (36)	R1	18	26
Sugiura <i>et al</i> ^[20] , 2013	40 (19)	R1	23	30
Petermann <i>et al</i> ^[13] , 2013	36 (38)	R1	14	19
Zhang <i>et al</i> ^[14] , 2012	48 (57)	R1	17	29
Rau <i>et al</i> ^[21] , 2012	56 (44)	R1	14	19
Fatima <i>et al</i> ^[22] , 2010	149 (24)	R1/R2	15/10	19
Kato <i>et al</i> ^[4] , 2009	61 (35)	R1/R2	9/6	15
Raut <i>et al</i> ^[5] , 2007	60 (17)	R1	22	28
Present study	38 (31)	R1	16	23

ARTICLE HIGHLIGHTS

Research background

In recent years, the status of resection margin of patients with pancreatic head carcinoma after pancreaticoduodenectomy (PD) has received much attention, but controversies still exist.

Research motivation

This study aimed to examine the impact of resection margin status on long-term overall survival (OS) of patients with pancreatic head carcinoma after PD.

Research objectives

This study examined the impact of resection margin status on long-term OS of patients with pancreatic head carcinoma after PD by the tumor node metastasis standard.

Research methods

Consecutive patients with pancreatic head carcinoma who underwent PD at the Chinese People's Liberation Army General Hospital between May 2010 and May 2016 were included. The impact of resection margin status on long-term OS was retrospectively analyzed.

Research results

Among the 124 patients, R0 resection was achieved in 85 patients (68.5%), R1 resection in 38 patients (30.7%) and R2 resection in 1 patient (0.8%). The 1- and 3-year OS rates were significantly higher for the patients who underwent R0 resection than those who underwent R1 resection (1-year OS rates: 69.4% *vs* 53.0%; 3-year OS rates: 26.9% *vs* 11.7%). Multivariate analysis showed resection margin status and venous invasion to be significant risk factors of OS. Future studies should be required to determine the impact of resection margin status on long-term OS of patients with pancreatic head carcinoma after PD in a larger sample population.

Research conclusions

This study suggested that patients with R0 resection had significantly better postoperative long-term OS than those with R1 resection. Venous invasion was an independent factor influencing survival. Adequate resection to achieve R0 resection can improve postoperative long-term OS for patients with pancreatic head cancer.

Research perspectives

The sample size of this study was small and patients who died of complications in the perioperative period were not included because this study focused only on long-term OS. The follow-up isolation time was also too long in this study, which would affect the accuracy of OS. Future studies will be required to determine the impact of resection margin status on long-term OS of patients with pancreatic head carcinoma after PD in larger sample population.

REFERENCES

- 1 Ethun CG, Kooby DA. The importance of surgical margins in pancreatic cancer. *J Surg Oncol* 2016; **113**: 283-288 [PMID: 26603829 DOI: 10.1002/jso.24092]
- 2 Siegel RL, Miller KD, Jemal A. Cancer statistics, 2016. *CA Cancer J Clin* 2016; **66**: 7-30 [PMID: 26742998 DOI: 10.3322/caac.21332]
- 3 Kooby DA, Lad NL, Squires MH, Maithel SK, Sarmiento JM, Staley CA, Adsay NV, El-Rayes BF, Weber SM, Winslow ER, Cho CS, Zavala KA, Bentrem DJ, Knab M, Ahmad SA, Abbott DE, Sutton JM, Kim HJ, Yeh JJ, Aufforth R, Scoggins CR, Martin RC, Parikh AA, Robinson J, Hashim YM, Fields RC, Hawkins WG, Merchant NB. Value of intraoperative neck margin analysis during Whipple for pancreatic adenocarcinoma: a multicenter analysis of 1399 patients. *Ann Surg* 2014; **260**: 494-501; discussion 501-3 [PMID: 25115425 DOI: 10.1097/SLA.0000000000000890]

- 4 **Kato K**, Yamada S, Sugimoto H, Kanazumi N, Nomoto S, Takeda S, Kodera Y, Morita S, Nakao A. Prognostic factors for survival after extended pancreatectomy for pancreatic head cancer: influence of resection margin status on survival. *Pancreas* 2009; **38**: 605-612 [PMID: [19629002](#) DOI: [10.1097/MPA.0b013e3181a4891d](#)]
- 5 **Raut CP**, Tseng JF, Sun CC, Wang H, Wolff RA, Crane CH, Hwang R, Vauthey JN, Abdalla EK, Lee JE, Pisters PW, Evans DB. Impact of resection status on pattern of failure and survival after pancreaticoduodenectomy for pancreatic adenocarcinoma. *Ann Surg* 2007; **246**: 52-60 [PMID: [17592291](#) DOI: [10.1097/01.sla.0000259391.84304.2b](#)]
- 6 **Sobin LH**, Gospodarowicz MK, Wittekind CH. TNM classification of malignant tumours. 7th ed. Oxford: Wiley-Blackwell Press, 2010.
- 7 **Japan Pancreas Society**. General rules for the study of pancreatic cancer. 6th ed. Tokyo: Kanehara, 2009.
- 8 **Campbell F**, Foulis AK, Verbeke CS. Dataset for the histopathological reporting of carcinomas of the pancreas, ampulla of Vater and common bile duct. London: Royal College of Pathologists, 2010.
- 9 **Chang DK**, Johns AL, Merrett ND, Gill AJ, Colvin EK, Scarlett CJ, Nguyen NQ, Leong RW, Cosman PH, Kelly MI, Sutherland RL, Henshall SM, Kench JG, Biankin AV. Margin clearance and outcome in resected pancreatic cancer. *J Clin Oncol* 2009; **27**: 2855-2862 [PMID: [19398572](#) DOI: [10.1200/JCO.2008.20.5104](#)]
- 10 **Esposito I**, Kleeff J, Bergmann F, Reiser C, Herpel E, Friess H, Schirmacher P, Büchler MW. Most pancreatic cancer resections are R1 resections. *Ann Surg Oncol* 2008; **15**: 1651-1660 [PMID: [18351300](#) DOI: [10.1245/s10434-008-9839-8](#)]
- 11 **Lad NL**, Squires MH, Maitzel SK, Fisher SB, Mehta VV, Cardona K, Russell MC, Staley CA, Adsay NV, Kooby DA. Is it time to stop checking frozen section neck margins during pancreaticoduodenectomy? *Ann Surg Oncol* 2013; **20**: 3626-3633 [PMID: [23838908](#) DOI: [10.1245/s10434-013-3080-9](#)]
- 12 **Verbeke CS**, Leitch D, Menon KV, McMahon MJ, Guillou PJ, Anthony A. Redefining the R1 resection in pancreatic cancer. *Br J Surg* 2006; **93**: 1232-1237 [PMID: [16804874](#) DOI: [10.1002/bjs.5397](#)]
- 13 **Petermann D**, Demartines N, Schäfer M. Severe postoperative complications adversely affect long-term survival after R1 resection for pancreatic head adenocarcinoma. *World J Surg* 2013; **37**: 1901-1908 [PMID: [23564215](#) DOI: [10.1007/s00268-013-2023-8](#)]
- 14 **Zhang Y**, Frampton AE, Cohen P, Kyriakides C, Bong JJ, Habib NA, Spalding DR, Ahmad R, Jiao LR. Tumor infiltration in the medial resection margin predicts survival after pancreaticoduodenectomy for pancreatic ductal adenocarcinoma. *J Gastrointest Surg* 2012; **16**: 1875-1882 [PMID: [22878786](#) DOI: [10.1007/s11605-012-1985-4](#)]
- 15 **Agha RA**, Borrelli MR, Vella-Baldacchino M, Thavayogan R, Orgill DP, STROCSS Group. The STROCSS statement: Strengthening the Reporting of Cohort Studies in Surgery. *Int J Surg* 2017; **46**: 198-202 [PMID: [28890409](#) DOI: [10.1016/j.ijsu.2017.08.586](#)]
- 16 **Okada K**, Kawai M, Hirono S, Miyazawa M, Shimizu A, Kitahata Y, Tani M, Yamaue H. A replaced right hepatic artery adjacent to pancreatic carcinoma should be divided to obtain R0 resection in pancreaticoduodenectomy. *Langenbecks Arch Surg* 2015; **400**: 57-65 [PMID: [25359559](#) DOI: [10.1007/s00423-014-1255-x](#)]
- 17 **Inoue Y**, Saiura A, Yoshioka R, Ono Y, Takahashi M, Arita J, Takahashi Y, Koga R. Pancreatoduodenectomy With Systematic Mesopancreas Dissection Using a Supracolic Anterior Artery-first Approach. *Ann Surg* 2015; **262**: 1092-1101 [PMID: [25587814](#) DOI: [10.1097/SLA.0000000000001065](#)]
- 18 **Aimoto T**, Mizutani S, Kawano Y, Matsushita A, Yamashita N, Suzuki H, Uchida E. Left posterior approach pancreaticoduodenectomy with total mesopancreas excision and circumferential lymphadenectomy around the superior mesenteric artery for pancreatic head carcinoma. *J Nippon Med Sch* 2013; **80**: 438-445 [PMID: [24419715](#)]
- 19 **Podda M**, Thompson J, Kulli CTG, Tait IS. Vascular resection in pancreaticoduodenectomy for periampullary cancers. A 10 year retrospective cohort study. *Int J Surg* 2017; **39**: 37-44 [PMID: [28110027](#) DOI: [10.1016/j.ijsu.2017.01.042](#)]
- 20 **Sugiura T**, Uesaka K, Mihara K, Sasaki K, Kanemoto H, Mizuno T, Okamura Y. Margin status, recurrence pattern, and prognosis after resection of pancreatic cancer. *Surgery* 2013; **154**: 1078-1086 [PMID: [23973112](#) DOI: [10.1016/j.surg.2013.04.015](#)]
- 21 **Rau BM**, Moritz K, Schuschab S, Alsfasser G, Prall F, Klar E. R1 resection in pancreatic cancer has significant impact on long-term outcome in standardized pathology modified for routine use. *Surgery* 2012; **152**: S103-S111 [PMID: [22766366](#) DOI: [10.1016/j.surg.2012.05.015](#)]
- 22 **Fatima J**, Schnellrdorfer T, Barton J, Wood CM, Wiste HJ, Smyrk TC, Zhang L, Sarr MG, Nagorney DM, Farnell MB. Pancreatoduodenectomy for ductal adenocarcinoma: implications of positive margin on survival. *Arch Surg* 2010; **145**: 167-172 [PMID: [20157085](#) DOI: [10.1001/archsurg.2009.282](#)]
- 23 **Nitta T**, Nakamura T, Mitsuhashi T, Asano T, Okamura K, Tsuchikawa T, Tamoto E, Murakami S, Noji T, Kurashima Y, Ebihara Y, Nakanishi Y, Shichinohe T, Hirano S. The impact of margin status determined by the one-millimeter rule on tumor recurrence and survival following pancreaticoduodenectomy for pancreatic ductal adenocarcinoma. *Surg Today* 2017; **47**: 490-497 [PMID: [27677294](#) DOI: [10.1007/s00595-016-1420-7](#)]
- 24 **Komatsu H**, Egawa S, Motoi F, Morikawa T, Sakata N, Naitoh T, Katayose Y, Ishida K, Unno M. Clinicopathological features and surgical outcomes of adenosquamous carcinoma of the pancreas: a retrospective analysis of patients with resectable stage tumors. *Surg Today* 2015; **45**: 297-304 [PMID: [24973941](#) DOI: [10.1007/s00595-014-0934-0](#)]
- 25 **Janot MS**, Kersting S, Belyaev O, Matuschek A, Chromik AM, Suelberg D, Uhl W, Tannapfel A, Bergmann U. Can the new RCP R0/R1 classification predict the clinical outcome in ductal adenocarcinoma of the pancreatic head? *Langenbecks Arch Surg* 2012; **397**: 917-925 [PMID: [22695970](#) DOI: [10.1007/s00423-012-0953-5](#)]
- 26 **Popescu I**, Dumitrascu T. Total meso-pancreas excision: key point of resection in pancreatic head adenocarcinoma. *Hepatogastroenterology* 2011; **58**: 202-207 [PMID: [21510315](#)]
- 27 **Nagakawa Y**, Hosokawa Y, Osakabe H, Sahara Y, Takishita C, Nakajima T, Hijikata Y, Kasahara K, Kazuhiko K, Saito K, Tsuchida A. Pancreatoduodenectomy with right-oblique posterior dissection of superior mesenteric nerve plexus is logical procedure for pancreatic cancer with extrapancreatic nerve plexus invasion. *Hepatogastroenterology* 2014; **61**: 2371-2376 [PMID: [25699385](#)]
- 28 **Gaedecke J**, Gunawan B, Grade M, Szöke R, Liersch T, Becker H, Ghadimi BM. The mesopancreas is the primary site for R1 resection in pancreatic head cancer: relevance for clinical trials. *Langenbecks Arch Surg* 2010; **395**: 451-458 [PMID: [19418067](#) DOI: [10.1007/s00423-009-0494-8](#)]

- 29 **Agrawal MK**, Thakur DS, Somashekar U, Chandrakar SK, Sharma D. Mesopancreas: myth or reality? *JOP* 2010; **11**: 230-233 [PMID: [20442517](#)]
- 30 **Bouassida M**, Mighri MM, Chtourou MF, Sassi S, Touinsi H, Hajji H, Sassi S. Retroportal lamina or mesopancreas? Lessons learned by anatomical and histological study of thirty three cadaveric dissections. *Int J Surg* 2013; **11**: 834-836 [PMID: [23994001](#) DOI: [10.1016/j.ijso.2013.08.009](#)]
- 31 **Kawabata Y**, Tanaka T, Nishi T, Monma H, Yano S, Tajima Y. Appraisal of a total meso-pancreatoduodenum excision with pancreaticoduodenectomy for pancreatic head carcinoma. *Eur J Surg Oncol* 2012; **38**: 574-579 [PMID: [22575529](#) DOI: [10.1016/j.ejso.2012.04.007](#)]



Published By Baishideng Publishing Group Inc
7041 Koll Center Parkway, Suite 160, Pleasanton, CA 94566, USA
Telephone: +1-925-2238242
E-mail: bpgoffice@wjgnet.com
Help Desk: <https://www.f6publishing.com/helpdesk>
<https://www.wjgnet.com>

