

World Journal of *Clinical Cases*

World J Clin Cases 2020 August 26; 8(16): 3377-3620



Contents

Semimonthly Volume 8 Number 16 August 26, 2020

OPINION REVIEW

- 3377 Novel computerized psychometric tests as primary screening tools for the diagnosis of minimal hepatic encephalopathy

Luo M, Mu R, Liu JF, Bai FH

REVIEW

- 3390 Management of cancer patients during COVID-19 pandemic at developing countries

González-Montero J, Valenzuela G, Ahumada M, Barajas O, Villanueva L

MINIREVIEWS

- 3405 Liver in the limelight in the corona (COVID-19) time

Chela HK, Pasha SB, Basar O, Daglilar E, Tahan V

ORIGINAL ARTICLE

Clinical and Translational Research

- 3431 Application of molybdenum target X-ray photography in imaging analysis of caudal intervertebral disc degeneration in rats

Su QH, Zhang Y, Shen B, Li YC, Tan J

- 3440 Accuracy study of a binocular-stereo-vision-based navigation robot for minimally invasive interventional procedures

Wang R, Han Y, Luo MZ, Wang NK, Sun WW, Wang SC, Zhang HD, Lu LJ

Retrospective Study

- 3450 Value of virtual bronchoscopic navigation and transbronchial ultrasound-guided sheath-guided exploration in diagnosis of peripheral lung cancer

Liu Y, Wang F, Zhang QC, Tong ZH

- 3458 Significance of serum fibroblast growth factor-23 and miR-208b in pathogenesis of atrial fibrillation and their relationship with prognosis

Chen JM, Zhong YT, Tu C, Lan J

- 3465 Home quarantine compliance is low in children with fever during COVID-19 epidemic

Lou Q, Su DQ, Wang SQ, Gao E, Li LQ, Zhuo ZQ

- 3474 Combination of endoscopic submucosal dissection and laparoscopic sentinel lymph node dissection in early mucinous gastric cancer: Role of lymph node metastasis

Li H, Zhao LL, Zhang XC, Liu DX, Wang GY, Huo ZB, Chen SB

- 3483** Factors affecting failed trial of labor and countermeasures: A retrospective analysis

Wang JG, Sun JL, Shen J

- 3493** Value of miR-1271 and glypican-3 in evaluating the prognosis of patients with hepatocellular carcinoma after transcatheter arterial chemoembolization

Guo Z, Wang J, Li L, Liu R, Fang J, Tie B

Observational Study

- 3503** Follow-up study on symptom distress in esophageal cancer patients undergoing repeated dilation

Liu L, Liu QW, Wu XD, Liu SY, Cao HJ, Hong YT, Qin HY

- 3515** Long-term medical treatment of patients with severe burns at exposed sites

Du Y, Lv GZ, Yu S, Wang D, Tan Q

CASE REPORT

- 3527** Laparoscopic management of a giant mucinous benign ovarian mass weighing 10150 grams: A case report

Sanna E, Madeddu C, Melis L, Nemolato S, Macciò A

- 3534** Concurrent hepatocellular carcinoma metastasis to stomach, colon, and brain: A case report

Kim R, Song J, Kim SB

- 3542** Disseminated osteomyelitis after urinary tract infection in immunocompetent adult: A case report

Kim YJ, Lee JH

- 3548** Pelvic lipomatosis and renal transplantation: A case report

Zhao J, Fu YX, Feng G, Mo CB

- 3553** Intestinal obstruction in pregnancy with reverse rotation of the midgut: A case report

Zhao XY, Wang X, Li CQ, Zhang Q, He AQ, Liu G

- 3560** Clinical laboratory investigation of a patient with an extremely high D-dimer level: A case report

Sun HX, Ge H, Xu ZQ, Sheng HM

- 3567** Recovery from a biliary stricture of a common bile duct ligature injury: A case report

Fan Z, Pan JY, Zhang YW

- 3573** Spontaneous pneumomediastinum in an elderly COVID-19 patient: A case report

Kong N, Gao C, Xu MS, Xie YL, Zhou CY

- 3578** Acute generalized exanthematous pustulosis with airway mucosa involvement: A case report

Li LL, Lu YQ, Li T

- 3583** Multifocal neuroendocrine cell hyperplasia accompanied by tumorlet formation and pulmonary sclerosing pneumocytoma: A case report

Han XY, Wang YY, Wei HQ, Yang GZ, Wang J, Jia YZ, Ao WQ

- 3591** Giant benign phyllodes breast tumour with pulmonary nodule mimicking malignancy: A case report
Zhang T, Feng L, Lian J, Ren WL
- 3601** Spontaneous multivessel coronary artery spasm diagnosed with intravascular ultrasound imaging: A case report
Wu HY, Cao YW, Chang FJ, Liang L
- 3608** Delayed perforation after endoscopic resection of a colonic laterally spreading tumor: A case report and literature review
Zhou GYJ, Hu JL, Wang S, Ge N, Liu X, Wang GX, Sun SY, Guo JT
- 3616** First branchial cleft cyst accompanied by external auditory canal atresia and middle ear malformation: A case report
Zhang CL, Li CL, Chen HQ, Sun Q, Liu ZH

ABOUT COVER

Editorial board member of *World Journal of Clinical Cases*, Dr. Kvolik is a Professor in the School of Medicine, Osijek University, Croatia. She obtained her MD degree, with specialization in the field of anesthesiology, resuscitation and intensive care from the Zagreb Medical School, Croatia. Afterwards, she undertook postgraduate training in Clinical Pharmacology at the same institution, defending both a Master's thesis and PhD thesis. In 2006, she joined the Osijek University Medical Faculty as a lecturer and was promoted to Professor in 2009. In 2012, she was elected Head of the Department of Anesthesiology, Resuscitation, Intensive Care and Pain Therapy, a position she occupies to this day. She is also the current Head of the Intensive Care Unit at the Osijek University Hospital, Croatia. (L-Editor: Filipodia)

AIMS AND SCOPE

The primary aim of *World Journal of Clinical Cases* (*WJCC*, *World J Clin Cases*) is to provide scholars and readers from various fields of clinical medicine with a platform to publish high-quality clinical research articles and communicate their research findings online.

WJCC mainly publishes articles reporting research results and findings obtained in the field of clinical medicine and covering a wide range of topics, including case control studies, retrospective cohort studies, retrospective studies, clinical trials studies, observational studies, prospective studies, randomized controlled trials, randomized clinical trials, systematic reviews, meta-analysis, and case reports.

INDEXING/ABSTRACTING

The *WJCC* is now indexed in Science Citation Index Expanded (also known as SciSearch®), Journal Citation Reports/Science Edition, PubMed, and PubMed Central. The 2020 Edition of Journal Citation Reports® cites the 2019 impact factor (IF) for *WJCC* as 1.013; IF without journal self cites: 0.991; Ranking: 120 among 165 journals in medicine, general and internal; and Quartile category: Q3.

RESPONSIBLE EDITORS FOR THIS ISSUE

Production Editor: Ji-Hong Lin; Production Department Director: Xiang Li; Editorial Office Director: Jin-Lai Wang.

NAME OF JOURNAL

World Journal of Clinical Cases

ISSN

ISSN 2307-8960 (online)

LAUNCH DATE

April 16, 2013

FREQUENCY

Semimonthly

EDITORS-IN-CHIEF

Dennis A Bloomfield, Sandro Vento, Bao-Gan Peng

EDITORIAL BOARD MEMBERS

<https://www.wjgnet.com/2307-8960/editorialboard.htm>

PUBLICATION DATE

August 26, 2020

COPYRIGHT

© 2020 Baishideng Publishing Group Inc

INSTRUCTIONS TO AUTHORS

<https://www.wjgnet.com/bpg/gerinfo/204>

GUIDELINES FOR ETHICS DOCUMENTS

<https://www.wjgnet.com/bpg/GerInfo/287>

GUIDELINES FOR NON-NATIVE SPEAKERS OF ENGLISH

<https://www.wjgnet.com/bpg/gerinfo/240>

PUBLICATION ETHICS

<https://www.wjgnet.com/bpg/GerInfo/288>

PUBLICATION MISCONDUCT

<https://www.wjgnet.com/bpg/gerinfo/208>

ARTICLE PROCESSING CHARGE

<https://www.wjgnet.com/bpg/gerinfo/242>

STEPS FOR SUBMITTING MANUSCRIPTS

<https://www.wjgnet.com/bpg/GerInfo/239>

ONLINE SUBMISSION

<https://www.f6publishing.com>

Retrospective Study

Value of virtual bronchoscopic navigation and transbronchial ultrasound-guided sheath-guided exploration in diagnosis of peripheral lung cancer

Yong Liu, Feng Wang, Qun-Cheng Zhang, Zhao-Hui Tong

ORCID number: Yong Liu 0000-0002-3904-4479; Feng Wang 0000-0002-2429-5662; Qun-Cheng Zhang 0000-0002-8154-4303; Zhao-Hui Tong 0000-0002-5341-6857.

Author contributions: Liu Y, Wang F, and Tong ZH performed the operation; Zhang QC designed this retrospective study; Liu Y wrote the paper; Wang F was responsible for sorting the data.

Institutional review board

statement: This study was reviewed and approved by the Ethics Committee of the Zhoukou Central Hospital.

Informed consent statement:

Informed consent was obtained from the patients.

Conflict-of-interest statement:

Dr. Tong reports grants from Beijing Municipal Science and Technology Commission (No. Z181100001718185) during the conduct of the study.

Data sharing statement:

No additional data are available.

Open-Access: This article is an open-access article that was selected by an in-house editor and fully peer-reviewed by external

Yong Liu, Feng Wang, Zhao-Hui Tong, Department of Respiratory and Critical Care Medicine, Beijing Chaoyang Hospital, Capital Medical University, Beijing 100020, China

Yong Liu, Henan Provincial People's Hospital, Zhengzhou 450003, Henan Province, China

Yong Liu, Department of Respiratory and Critical Care Medicine, Zhoukou Central Hospital, Zhoukou 466100, Henan Province, China

Feng Wang, Zhao-Hui Tong, Beijing Institute of Respiratory Medicine, Beijing 100020, China

Qun-Cheng Zhang, Department of Respiratory and Critical Care Medicine, Henan Provincial People's Hospital, People's Hospital of Zhengzhou University, Zhengzhou 450003, Henan Province, China

Corresponding author: Zhao-Hui Tong, MD, PhD, Chief Physician, Department of Respiratory and Critical Care Medicine, Beijing Chaoyang Hospital, Capital Medical University; Beijing Institute of Respiratory Medicine, No. 8 South Gongti Road, Chaoyang District, Beijing 100020, China. 13910930309@163.com

Abstract

BACKGROUND

Peripheral lung cancer poses a substantial harm to human health, and it is easy to become exacerbated, potentially threatening the life and safety of patients

AIM

To assess the value of virtual bronchoscopic navigation (VBN) combined with transbronchial ultrasound-guided sheath-guided (EBUS-GS) exploration in the diagnosis of peripheral lung cancer.

METHODS

A total of 236 patients with peripheral lung cancer (nodule diameter range, 8-30 mm; diagnosed using high-resolution computed tomography) were selected from three centers between October 2018 and December 2019. Patients who underwent EBUS-GS exploration alone were included in a control group, and those who received VBN in combination with EBUS-GS exploration were included in an observation group. The diagnostic rate and total operating time of different

reviewers. It is distributed in accordance with the Creative Commons Attribution NonCommercial (CC BY-NC 4.0) license, which permits others to distribute, remix, adapt, build upon this work non-commercially, and license their derivative works on different terms, provided the original work is properly cited and the use is non-commercial. See: <http://creativecommons.org/licenses/by-nc/4.0/>

Manuscript source: Unsolicited manuscript

Received: May 10, 2020

Peer-review started: May 10, 2020

First decision: June 7, 2020

Revised: June 20, 2020

Accepted: July 14, 2020

Article in press: July 14, 2020

Published online: August 26, 2020

P-Reviewer: Al-Abed M, Kawai HF

S-Editor: Wang JL

L-Editor: Wang TQ

P-Editor: Liu JH



subgroups of the two groups were compared, and the time needed to determine the lesion was recorded.

RESULTS

There were no significant differences in diagnosis rate or total operation time between the two groups ($P > 0.05$), and the time needed to determine the lesion in the observation group was less than that of the control group ($P < 0.05$).

CONCLUSION

The combined use of VBN and EBUS-GS exploration technology has little effect on the diagnosis rate and total operation time of peripheral lung cancer, but it significantly shortens the time needed to determine the lesion and is a valuable diagnostic method.

Key words: Peripheral lung cancer; Virtual bronchoscopy navigation; Transbronchial ultrasound-guided sheath guidance; Diagnostic rate; Determination of focal time; Total operating time

©The Author(s) 2020. Published by Baishideng Publishing Group Inc. All rights reserved.

Core tip: Transbronchial ultrasound-guided sheath-guided exploration and virtual bronchoscopic navigation improve the rate of diagnosis of pulmonary peripheral lesions. We discuss the role of virtual bronchoscopy navigation in combination with the transbronchial ultrasound-guided sheath-guided exploration technique in the diagnosis of peripheral lung cancer.

Citation: Liu Y, Wang F, Zhang QC, Tong ZH. Value of virtual bronchoscopic navigation and transbronchial ultrasound-guided sheath-guided exploration in diagnosis of peripheral lung cancer. *World J Clin Cases* 2020; 8(16): 3450-3457

URL: <https://www.wjgnet.com/2307-8960/full/v8/i16/3450.htm>

DOI: <https://dx.doi.org/10.12998/wjcc.v8.i16.3450>

INTRODUCTION

As computed tomography (CT) diagnostic techniques continue to improve, the detection rate of lung cancer has increased significantly^[1-3]. Early histological diagnosis plays an important role in lung cancer patients^[4]. Peripheral lung cancer occurs from the tertiary bronchus down, and lung cancer refers to cancers above the respiratory bronchioles, often adenocarcinoma. Early peripheral lung cancer has no significant symptoms, and when the symptoms are obvious, the cancer is in a late stage. Globally, lung cancer has a high incidence and mortality rate^[5,6]. If patients with peripheral lung cancer have advanced metastasis, it is necessary to have a clear molecular diagnosis based on different targets to initiate individualized treatment and promote a therapeutic effect. The main inducing factors include smoking, occupational and environmental contact, ionizing radiation, chronic lung infection, heredity, and air pollution. The main clinical manifestations are chest pain and fever, and X-ray examination, multi-slice spiral CT examination, and CT target scanning are generally performed.

The main diagnostic methods at this stage are traditional transbronchial biopsy (TBB) under X-ray guidance, virtual bronchoscopy navigation (VBN), transthoracic aspiration biopsy, and endobronchial ultrasound with a guide sheath (EBUS-GS)^[7]. During the course of diagnosis, the marginal signs, morphological size, CT appearance of adjacent tissues, and internal characteristics of the lesions are used as the basis for diagnosis. A CT target scan is needed if the patient has an atypical appearance. If the diagnosis cannot be confirmed, CT-guided percutaneous biopsy, short-term reexamination, or bronchoscopic lung biopsy is performed to avoid a missed diagnosis or misdiagnosis of early peripheral lung cancer. After the diagnosis is clear, molecular diagnosis and staging diagnosis should be performed to provide guidance for clinical treatment. A higher diagnostic rate is obtained by transthoracic aspiration biopsy, but this method easily causes pneumothorax and other complications^[8]. EBUS-GS and

VBN improve the rate of diagnosis of pulmonary peripheral lesions^[9-11]. The present study thus examined the role of VBN in combination with the EBUS-GS exploration technique in the diagnosis of peripheral lung cancer.

MATERIALS AND METHODS

Research subjects

From October 2018 to December 2019, 236 patients with peripheral lung cancer (nodule diameter range, 8 mm-30 mm; diagnosed by high-resolution CT) were selected at Beijing Chaoyang Hospital of Capital Medical University, Henan Provincial People's Hospital, and Zhoukou Central Hospital. Thirty-four patients who were subsequently diagnosed with benign lesions or lung metastases were excluded. This retrospective study included 202 patients who were diagnosed with primary lung cancer. Patients who underwent EBUS-GS exploration were included in a control group, and those who underwent VBN in combination with EBUS-GS exploration were included in an observation group. There were 101 patients in each group. The control group had 64 males and 37 females. The age ranged from 38-84 years, with a mean of 61.6 ± 3.2 years. There were 65 males and 36 females in the observation group. The age ranged from 39-83 years, with a mean of 62.3 ± 3.1 years.

The study was performed with the approval by the ethics committees of the hospitals involved. All of the patients signed an informed consent agreement under voluntary conditions. Patients with allergy to lidocaine or other local narcotic drugs, severe organic disease, or pregnancy were excluded. Comparison of the general data, including sex, age, and location and size of the lesions, between the two groups revealed no significant differences ($P > 0.05$, Table 1).

Research methods

Patients in the control group underwent EBUS-GS examination and, based on the location of nodules on the chest CT images of the patients, assisted EBUS-GS to the location of the target lesion, and they were examined by endoscopic ultrasound. The target bronchi were reviewed *via* a biopsy hole guided by a sheath-wrapped ultrasound probe until the CT lesion size exhibited a similar abnormal echo. The probe was removed, and the casing was retained. The guide sheath was inserted into the lesion site. Five biopsy tissue samples were removed from each patient and sent to the pathology department. If there was no abnormal hypoechoic appearance, the surgeon determined the sampling method. The location of the lesion was washed with 20 mL of saline or brushing, and blind examination was performed around the location of the lesion. The ultrasonic image was used as the basis to judge the specific location of the ultrasound probe in the lesion. The EBUS-GS examinations of the observation group required VBN auxiliary access to the target lesion. Before the surgery, the patients received a 64-row spiral CT scan of the chest, and the data were transferred to a CD-ROM. The digital images were entered into the navigation system to communicate medical data, which formed a VB image of the peripheral lung lesions. The operator set the starting point and end point, and the software selected the path to the target lesion. The quantile points on the bronchial path were marked to ensure that the guide bronchoscope would penetrate into the peripheral lung lesions. At the time of examination, abnormal lesion size, image, and location were found, and biopsy was required. The diagnostic rate and total operating time of different subgroups of patients in the two groups were recorded, and the time needed to determine the lesion was recorded (Figure 1).

Statistical analysis

SPSS19.0 software was used for the statistical processing of the experimental data, and the results are expressed as mean \pm SD for measurement data. The *t*-test, percentage for count data, and chi-square test were used to analyze the data. $P < 0.05$ was considered statistically significant.

Table 1 Comparison of general data between the two groups

Clinical data	Control group (n = 101)	Observation group (n = 101)	P value
Gender (n)			0.884
Male	64	65	
Female	37	36	
Age (yr)	61.6 ± 3.2	62.3 ± 3.1	0.116
Location of lesion			0.916
Lower lobe	36	35	
Medium lobe	13	12	
Upper lobe	52	54	
Disease size (mm)			0.769
≤ 20	35	37	
> 20-30	66	64	
Computed tomography bronchial signs			0.737
Positive	77	79	
Negative	24	22	
Ultrasonic probe position			0.162
External to the lesion	10	11	
Near the lesion	39	37	
Within the lesion	52	53	

RESULTS

Comparison of diagnostic rates between different subgroups of the two groups of patients

Comparison of the diagnostic rates of different subgroups of patients in the two groups revealed no significant differences according to the location of the lesion ($P > 0.05$), the size of the lesion ($P > 0.05$), or the location of the probe ($P > 0.05$, Table 2).

Comparison of total operating time of diagnosis and time needed to determine the lesion between the two groups

The total operation time between the two groups was not statistically significant ($P > 0.05$), but the time needed to determine the lesion in the observation group was significantly less than that in the control group ($P < 0.05$; Table 3).

DISCUSSION

Peripheral lung cancer is also called “lung field type” compared with central lung cancer. The growth of the tumor in central lung cancer is located in the middle bronchus and above, while peripheral lung cancer is located below the segment bronchus. The early symptoms of peripheral lung cancer are not visible, so it is difficult to detect the disease in time. Once the symptoms appear, most patients are near the late stage. However, the earlier that treatment can be initiated, the better the effect of the treatment will be for the patient.

The American College of Chest Physicians guidelines reported in 2013 that patients with peripheral lung malignancies > 20 mm had a 63% success rate but it was only 34% in another study^[12]. The published diagnostic rate also reveals huge changes, and the timeliness of diagnosis directly affects the treatment and prognosis of patients. Peripheral solitary pulmonary nodules (SPN) are the usual manifestations of early peripheral lung cancer. The lesions are single and isolated, and the gaseous lung tissue completely surrounds these lesions^[13]. If the diameter is below 30 mm, there are no symptoms, such as pleural effusion, hilar enlargement, or atelectasis. Because the

Table 2 Comparison of the diagnostic rates between different subgroups of the two groups

Group	Control (n = 101)	Observation (n = 101)	χ^2	P value
Focus position				
Upper left	24	23	0.015	0.901
Lower left	26	25	0.014	0.907
Upper right	21	21	0.002	0.965
Lower right	15	16	0.052	0.819
Lesion size			0.007	0.933
8-20 mm	39	38		
21-30 mm	47	47		
Probe position				
Internal	51	52	0.063	0.802
External	2	2	0	0.991
Approaching	33	31	0.066	0.797
Total	86	85		

Table 3 Comparison of the total operating time of diagnosis and time needed to determine the lesion in the two groups

Group	Control (n = 101)	Observation (n = 101)	t	P value
General operating time (min)	25.4 ± 4.9	26.1 ± 4.8	1.026	0.306
Time needed to determine the lesion (min)	8.7 ± 1.1	4.9 ± 1.0	24.549	0

lesion is small, it does not have a great impact on the structure and function of the lung tissue. There are no obvious clinical symptoms, which are difficult to detect and are usually detected at the time of physical examination. With improvements of the medical level, low-dose spiral CT has been popularized, and the detection rate of SPN has improved. However, pathological examination is needed to confirm its nature. Interventional pulmonary disease has become an essential technique in the diagnosis of lung cancer. Only 18%-75% of patients with peripheral lung cancer were diagnosed using conventional bronchoscopy, and only 11%-42% of patients with tumors less than 200 mm were diagnosed.

VB assesses complex variations and structures of bronchial trees, such as bronchial stenosis, central-type airway malignancy, and airway malformation, and it plays a guiding role in bronchial biopsy of peripheral-type lesions. VBN evolved on the basis of CT techniques to reconstruct the bronchial tree. The examiner uses non-invasive methods to see the intratracheal images, and the bronchoscope reaches the target bronchus on this basis. The VBN reconstructs the CT data in the DICOM format directly into the navigation software computer, which automatically builds the three-dimensional bronchial tree. The automatic processing is completed by calibrating the target area of the lung, relying on the navigation software, which creates the biopsy path that guides the preoperative planning and selection of lung target sites. VBN has navigation and positioning functions, and the virtual view can be easily advanced and withdrawn according to the requirements. It can directly enter the lesion under its guidance during surgery.

The EBUS-GS probe uses ultrasonic waves that penetrate and are absorbed, reflected, and scattered by different tissues, and these waves form the acoustic spectrum image of the tissue structure, which is more characteristic. Because of the unique structure of bronchial trees, the clinical application of EBUS-GS leads to the "visualization" of peripheral lung lesions, which greatly improves the accuracy of biopsy tissue sampling, thus reducing the blindness of routine blind examinations and promoting the improvement of the positive diagnosis rate of peripheral lung cancer^[14]. It can also allow to judge the blood supply, estimate the blood vessel size, and calculate the distance between vessels. By observing the different positions on the abnormal sonogram, we can avoid the most abundant blood vessel positions individually, which reduces the incidence of bleeding, improves the predictability of

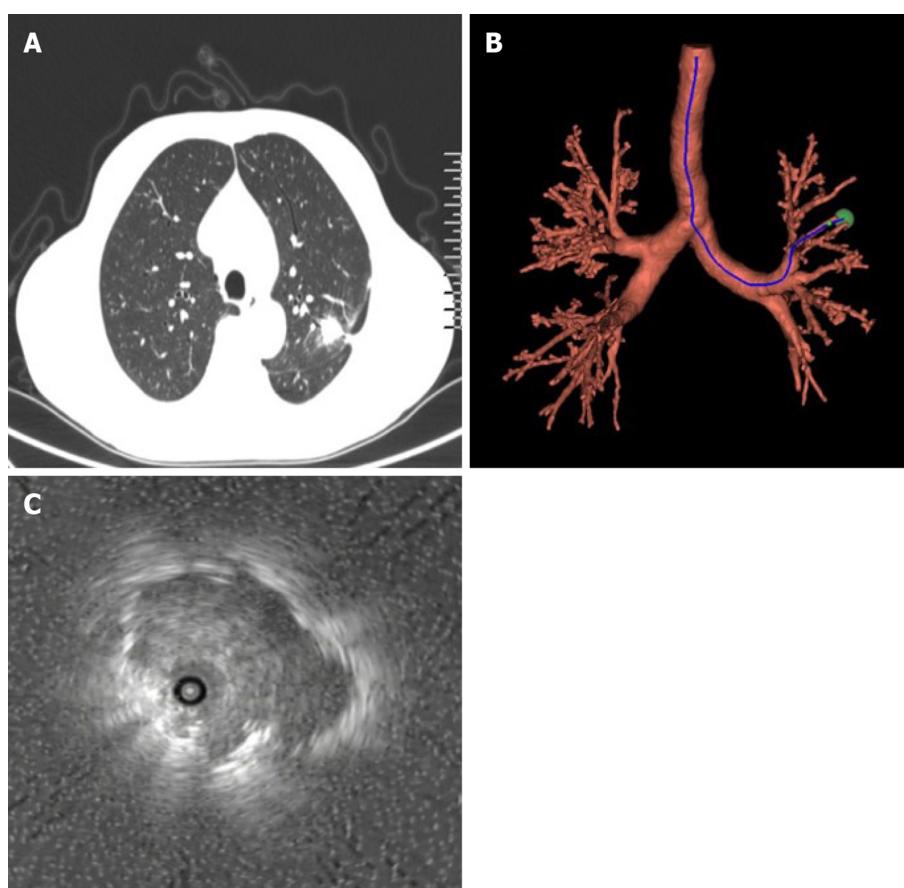


Figure 1 Virtual bronchoscopic navigation combined with transbronchial ultrasound guided sheath guided exploration. A: Preoperative computed tomography (CT) examination showed the location of lung tumors; B: 3D CT reconstruction showed lung structure, using virtual bronchoscope navigation combined with transbronchial ultrasound guided sheath guided exploration; C: Performance of transtracheal ultrasound during surgery.

bleeding complications, and promotes the accuracy and safety of peripulmonary biopsy^[15-17].

The results of this study showed no significant difference in the diagnosis rate between the two groups ($P > 0.05$). VBN in combination with EBUS-GS exploration did not affect the diagnosis rate, and there was no significant difference in total operation time between the two groups ($P > 0.05$).

Because EBUS-GS did not guide the localization of the lesion, the lesion could not be penetrated in 11%–21% of the patients even in combination with X-ray surveillance, which caused EBUS-GS to fail. At this stage, there are two controlled studies on whether VBN increases the diagnosis rate of peripheral pulmonary lesions (PPLs). Ishida *et al*^[18] reported that the combined application of VBN and EBUS-GS improves the diagnosis rate (80.4% *vs* 67.0%) and shortened the time (24 min *vs* 26.2 min). Asano and other researchers demonstrated that VBN did not improve the overall diagnosis rate of PPLs (67.1% *vs* 59.9%), but a subgroup analysis revealed that VBN located some areas that were not visible under the X-ray, which was increased in the lung field. The combined use of VBN and EBUS-GS in a retrospective analysis showed a 63.35–84.4% diagnostic rate for PPLs and 44.4%–75.9% for ≤ 2 lesions. The use of VBN in navigation was not combined with X-ray in this study, which is consistent with the above findings for the diagnosis rate and total diagnosis rate of lesions ≤ 2 cm.

In summary, the combined use of VBN and EBUS-GS exploration technology has little effect on the diagnostic rate and total operating time in peripheral lung cancer, but it significantly shortens the time needed to determine the lesion. It is thus a valuable diagnostic method that can improve clinical research and lead to increased use^[19,20].

ARTICLE HIGHLIGHTS

Research background

Early peripheral lung cancer has no significant symptoms, and when the symptoms are obvious, the cancer is in a late stage.

Research motivation

It is necessary to have a clear molecular diagnosis based on different targets to initiate individualized treatment and promote a therapeutic effect.

Research objectives

To explore a new technique in the diagnosis of peripheral lung cancer.

Research methods

Patients in the control group underwent transbronchial ultrasound-guided sheath-guided (EBUS-GS) exploration, and the observation group received virtual bronchoscopic navigation (VBN) in combination with EBUS-GS exploration.

Research results

There were no significant differences in diagnosis rate or total operation time between the two groups ($P > 0.05$), and the time needed to determine the lesion in the observation group was less than that of the control group ($P < 0.05$).

Research conclusions

The combined use of VBN and EBUS-GS exploration technology has little effect on the diagnostic rate and total operating time in peripheral lung cancer.

Research perspectives

The new technology provides a new idea for the early diagnosis of lung cancer.

REFERENCES

- 1 Song G, Qiu T, Xuan Y, Zhao Y, Jiao W. [Clinical Application of Vectorial Localization of Peripheral Pulmonary Nodules Guided by Electromagnetic Navigation Bronchoscopy in Thoracic Surgery]. *Zhongguo Fei Ai Za Zhi* 2019; **22**: 709-713 [PMID: 31771740 DOI: 10.3779/j.issn.1009-3419.2019.11.05]
- 2 Wang J, Zhao Y, Chen Q, Zhang P, Xie W, Feng J, Cao J. Diagnostic value of rapid on-site evaluation during transbronchial biopsy for peripheral lung cancer. *Jpn J Clin Oncol* 2019; **49**: 501-505 [PMID: 30855687 DOI: 10.1093/jjco/hyz025]
- 3 de Koning HJ, van der Aalst CM, de Jong PA, Scholten ET, Nackaerts K, Heuvelmans MA, Lammers JJ, Weenink C, Yousaf-Khan U, Horeweg N, van 't Westeinde S, Prokop M, Mali WP, Mohamed Hoessein FAA, van Ooijen PMA, Aerts JGJV, den Bakker MA, Thunnissen E, Verschakelen J, Vliegenthart R, Walter JE, Ten Haaf K, Groen HJM, Oudkerk M. Reduced Lung-Cancer Mortality with Volume CT Screening in a Randomized Trial. *N Engl J Med* 2020; **382**: 503-513 [PMID: 31995683 DOI: 10.1056/NEJMoa1911793]
- 4 Yamakama H, Baba M, Shiba M, Urabe N, Fujisawa T, Yamaguchi Y, Oiwa T. [Application of transbronchial brushing for histological diagnosis of lung cancer]. *Nihon Kyobu Shikkan Gakkai Zasshi* 1989; **27**: 64-70 [PMID: 2545965]
- 5 Cao X, Liu M, Zhai F, Li N, Li F, Bao C, Liu Y, Chen G. Comparative evaluation of image registration methods with different interest regions in lung cancer radiotherapy. *BMC Med Imaging* 2019; **19**: 100 [PMID: 31878886 DOI: 10.1186/s12880-019-0402-9]
- 6 Yang L, Dou Y, Sui Z, Cheng H, Liu X, Wang Q, Gao P, Qu Y, Xu M. Upregulated miRNA-182-5p expression in tumor tissue and peripheral blood samples from patients with non-small cell lung cancer is associated with downregulated Caspase 2 expression. *Exp Ther Med* 2020; **19**: 603-610 [PMID: 31897103 DOI: 10.3892/etm.2019.8074]
- 7 Okachi S, Imai N, Imaizumi K, Iwano S, Ando M, Hase T, Aso H, Morise M, Wakahara K, Ito S, Hashimoto N, Sato M, Kondo M, Hasegawa Y. Factors Affecting the Diagnostic Yield of Transbronchial Biopsy Using Endobronchial Ultrasonography with a Guide Sheath in Peripheral Lung Cancer. *Intern Med* 2016; **55**: 1705-1712 [PMID: 27374669 DOI: 10.2169/internalmedicine.55.6341]
- 8 McLean AEB, Barnes DJ, Troy LK. Diagnosing Lung Cancer: The Complexities of Obtaining a Tissue Diagnosis in the Era of Minimally Invasive and Personalised Medicine. *J Clin Med* 2018; **7**: 163 [PMID: 29966246 DOI: 10.3390/jcm7070163]
- 9 Usuda J. [Virtual Bronchoscopic Navigation (VBN) and Electromagnetic Navigation System]. *Kyobu Geka* 2018; **71**: 843-849 [PMID: 30310037]
- 10 Bo L, Li C, Pan L, Wang H, Li S, Li Q, Bai C, Zeng Y, Nan Y, Wang Y, Huang H, Zhou R, Zhou H, Liu W, Sun J, Liu Z, Jin F. Diagnosing a solitary pulmonary nodule using multiple bronchoscopic guided technologies: A prospective randomized study. *Lung Cancer* 2019; **129**: 48-54 [PMID: 30797491 DOI: 10.1016/j.lungcan.2019.01.006]

- 11 **Li S**, Yan W, Chen M, Sun L, Wu Q, Chen K. [Diagnostic Utility of Virtual Bronchoscopic Navigation Assisted Endobronchial Ultrasonography with Guide Sheath for Peripheral Pulmonary Lesions]. *Zhongguo Fei Ai Za Zhi* 2019; **22**: 125-131 [PMID: [30909990](#) DOI: [10.3779/j.issn.1009-3419.2019.03.01](#)]
- 12 **Haidong H**, Yunye N, Wei Z, Zarogoulidis P, Hohenforst-Schmidt W, Man YG, Yuguang Y, Yuchao D, Chong B. Multiple guided technologies based on radial probe endobronchial ultrasound for the diagnosis of solitary peripheral pulmonary lesions: a single-center study. *J Cancer* 2017; **8**: 3514-3521 [PMID: [29151936](#) DOI: [10.7150/jca.20035](#)]
- 13 **Khan T**, Usman Y, Abdo T, Chaudry F, Keddissi JI, Youness HA. Diagnosis and management of peripheral lung nodule. *Ann Transl Med* 2019; **7**: 348 [PMID: [31516894](#) DOI: [10.21037/atm.2019.03.59](#)]
- 14 **Yasokawa N**, Yorizumi N, Kurose K, Abe M, Oga T. Detachment and recovery of an X-ray opaque tip of a disposable guide sheath kit: A rare complication of endobronchial ultrasound-guided transbronchial biopsy. *Respir Med Case Rep* 2020; **29**: 101030 [PMID: [32154100](#) DOI: [10.1016/j.rmcr.2020.101030](#)]
- 15 **Chen ZB**, Jin YP, Yu YM, Zhu DP, Ma HY, Chen L, Zhang Y, Ding QL, Deng ZC. [A study of the diagnostic value of endobronchial ultrasound guide sheath transbronchial lung biopsy combined with virtual bronchoscopic navigation in peripheral pulmonary lesions]. *Zhonghua Jie He He Hu Xi Za Zhi* 2016; **39**: 509-513 [PMID: [27430920](#) DOI: [10.3760/cma.j.issn.1001-0939.2016.07.004](#)]
- 16 **Ikezawa Y**, Shinagawa N, Sukoh N, Morimoto M, Kikuchi H, Watanabe M, Nakano K, Oizumi S, Nishimura M. Usefulness of Endobronchial Ultrasonography With a Guide Sheath and Virtual Bronchoscopic Navigation for Ground-Glass Opacity Lesions. *Ann Thorac Surg* 2017; **103**: 470-475 [PMID: [27825686](#) DOI: [10.1016/j.athoracsur.2016.09.001](#)]
- 17 **Fang F**, Pan L, Bo LY, Li WP, Fu EQ, Li CC, Jin FG. [Diagnostic value of endobronchial ultrasonography with guide-sheath combined with virtual bronchoscopy navigation in peripheral lung cancer]. *Zhonghua Jie He He Hu Xi Za Zhi* 2018; **41**: 473-477 [PMID: [29886622](#) DOI: [10.3760/cma.j.issn.1001-0939.2018.06.008](#)]
- 18 **Asano F**, Eberhardt R, Herth FJ. Virtual bronchoscopic navigation for peripheral pulmonary lesions. *Respiration* 2014; **88**: 430-440 [PMID: [25402610](#) DOI: [10.1159/000367900](#)]
- 19 **Oshige M**, Shirakawa T, Nakamura M, Mineshita M, Kurimoto N, Miyazawa T, Becker HD. Clinical application of virtual bronchoscopic navigation system for peripheral lung lesions. *J Bronchology Interv Pulmonol* 2011; **18**: 196-202 [PMID: [23169097](#) DOI: [10.1097/LBR.0b013e3182198f24](#)]
- 20 **Umeda Y**, Demura Y, Anzai M, Matsuoka H, Araya T, Nishitsuji M, Nishi K, Tsuchida T, Sumida Y, Morikawa M, Ameshima S, Ishizaki T, Kasahara K, Ishizuka T. (18)F-FDG uptake predicts diagnostic yield of transbronchial biopsy in peripheral lung cancer. *Lung Cancer* 2014; **85**: 47-52 [PMID: [24775095](#) DOI: [10.1016/j.lungcan.2014.03.025](#)]



Published by **Baishideng Publishing Group Inc**
7041 Koll Center Parkway, Suite 160, Pleasanton, CA 94566, USA

Telephone: +1-925-3991568

E-mail: bpgoffice@wjgnet.com

Help Desk: <https://www.f6publishing.com/helpdesk>

<https://www.wjgnet.com>

