

World Journal of *Clinical Cases*

World J Clin Cases 2020 September 6; 8(17): 3621-3919



Contents

Semimonthly Volume 8 Number 17 September 6, 2020

REVIEW

- 3621 Autoimmunity as the comet tail of COVID-19 pandemic
Talotta R, Robertson E
- 3645 Gender medicine: Lessons from COVID-19 and other medical conditions for designing health policy
Machluf Y, Chaïter Y, Tal O

MINIREVIEWS

- 3669 Complexities of diagnosis and management of COVID-19 in autoimmune diseases: Potential benefits and detriments of immunosuppression
Georgiev T, Angelov AK

ORIGINAL ARTICLE

Retrospective Study

- 3691 Emergency surgery in COVID-19 outbreak: Has anything changed? Single center experience
D'Urbano F, Fabbri N, Koleva Radica M, Rossin E, Carcoforo P
- 3697 Somatostatin receptor scintigraphy in the follow up of neuroendocrine neoplasms of appendix
Saponjski J, Macut D, Sobic-Saranovic D, Ognjanovic S, Bozic Antic I, Pavlovic D, Artiko V
- 3708 Efficacy of stool multiplex polymerase chain reaction assay in adult patients with acute infectious diarrhea
Ahn JS, Seo SI, Kim J, Kim T, Kang JG, Kim HS, Shin WG, Jang MK, Kim HY
- 3718 Comparison of gemcitabine plus nab-paclitaxel and FOLFIRINOX in metastatic pancreatic cancer
Han SY, Kim DU, Seol YM, Kim S, Lee NK, Hong SB, Seo HI
- 3730 Shear wave elastography may be sensitive and more precise than transient elastography in predicting significant fibrosis
Yao TT, Pan J, Qian JD, Cheng H, Wang Y, Wang GQ
- 3743 Radioactive ¹²⁵I seed implantation for locally advanced pancreatic cancer: A retrospective analysis of 50 cases
Li CG, Zhou ZP, Jia YZ, Tan XL, Song YY
- 3751 Active surveillance in metastatic pancreatic neuroendocrine tumors: A 20-year single-institutional experience
Gao HL, Wang WQ, Xu HX, Wu CT, Li H, Ni QX, Yu XJ, Liu L
- 3763 Clinical efficacy of tocilizumab treatment in severe and critical COVID-19 patients
Zeng J, Xie MH, Yang J, Chao SW, Xu EL

- 3774** Phosphatidylinositol-3,4,5-trisphosphate dependent Rac exchange factor 1 is a diagnostic and prognostic biomarker for hepatocellular carcinoma

Cai Y, Zheng Q, Yao DJ

Observational Study

- 3786** Awareness and attitude of fecal microbiota transplantation through transendoscopic enteral tubing among inflammatory bowel disease patients

Zhong M, Sun Y, Wang HG, Marcella C, Cui BT, Miao YL, Zhang FM

CASE REPORT

- 3797** Cauda equina arachnoiditis – a rare manifestation of West Nile virus neuroinvasive disease: A case report

Santini M, Zupetic I, Viskovic K, Krznaric J, Kutlesa M, Krajinovic V, Polak VL, Savic V, Tabain I, Barbic L, Bogdanic M, Stevanovic V, Mrzljak A, Vilibic-Cavlek T

REVIEW

- 3804** Portal gas in neonates; is it always surgical? A case report

Altokhais TI

CASE REPORT

- 3808** Large lingual heterotopic gastrointestinal cyst in a newborn: A case report

Lee AD, Harada K, Tanaka S, Yokota Y, Mima T, Enomoto A, Kogo M

- 3814** Osteochondral lesion of talus with gout tophi deposition: A case report

Kim T, Choi YR

- 3821** Traumatic neuroma of remnant cystic duct mimicking duodenal subepithelial tumor: A case report

Kim DH, Park JH, Cho JK, Yang JW, Kim TH, Jeong SH, Kim YH, Lee YJ, Hong SC, Jung EJ, Ju YT, Jeong CY, Kim JY

- 3828** Autoimmune hepatitis in a patient with immunoglobulin A nephropathy: A case report

Jeon YH, Kim DW, Lee SJ, Park YJ, Kim HJ, Han M, Kim IY, Lee DW, Song SH, Lee SB, Seong EY

- 3835** Diagnosis of an actively bleeding brachial artery hematoma by contrast-enhanced ultrasound: A case report

Ma JJ, Zhang B

- 3841** Lung adenocarcinoma harboring rare epidermal growth factor receptor L858R and V834L mutations treated with icotinib: A case report

Zhai SS, Yu H, Gu TT, Li YX, Lei Y, Zhang HY, Zhen TH, Gao YG

- 3847** Gastroduodenitis associated with ulcerative colitis: A case report

Yang Y, Li CQ, Chen WJ, Ma ZH, Liu G

- 3853** Majocchi's granuloma caused by *Trichophyton rubrum* after facial injection with hyaluronic acid: A case report

Liu J, Xin WQ, Liu LT, Chen CF, Wu L, Hu XP

- 3859** Novel deletion mutation in Bruton's tyrosine kinase results in X-linked agammaglobulinemia: A case report
Hu XM, Yuan K, Chen H, Chen C, Fang YL, Zhu JF, Liang L, Wang CL
- 3867** Multidisciplinary treatment of life-threatening hemoptysis and paraplegia of choriocarcinoma with pulmonary, hepatic and spinal metastases: A case report
Lin YY, Sun Y, Jiang Y, Song BZ, Ke LJ
- 3875** Diagnostic value of ultrasound in the spontaneous rupture of renal angiomyolipoma during pregnancy: A case report
Zhang T, Xue S, Wang ZM, Duan XM, Wang DX
- 3881** Gallbladder sarcomatoid carcinoma: Seven case reports
Qin Q, Liu M, Wang X
- 3890** Surgical strategy used in multilevel cervical disc replacement and cervical hybrid surgery: Four case reports
Wang XF, Meng Y, Liu H, Hong Y, Wang BY
- 3903** Diagnosis and treatment of an elderly patient with 2019-nCoV pneumonia and acute exacerbation of chronic obstructive pulmonary disease in Gansu Province: A case report
He TP, Wang DL, Zhao J, Jiang XY, He J, Feng JK, Yuan Y
- 3911** Diagnosis and treatment of mixed infection of hepatic cystic and alveolar *echinococcosis*: Four case reports
A JD, Chai JP, Wang H, Gao W, Peng Z, Zhao SY, A XR

ABOUT COVER

Editorial board member of World Journal of Clinical Cases, Dr. Elia de Maria is Adjunct Professor of Arrhythmology Lab in the Cardiology Unit, Ramazzini Hospital in Carpi, Italy. He graduated in Medicine and Surgery from the University of Napoli in 1999, continuing on to obtain specialization in Cardiology in 2003. He also holds the distinction of High Degree Master in Electrophysiology and Cardiac Stimulation. Since 2005, he has practiced as a Permanent Consultant Cardiologist in the Italian Public Hospitals, and since 2015 as an External Contract Professor in the Faculty of Medicine and Surgery of University of Verona. His clinical and research interests encompass pharmacological therapy in acute and chronic cardiac conditions, temporary and definitive pacing, thoracentesis and pericardiocentesis, and hemodynamic monitoring. (L-Editor: Filipodia)

AIMS AND SCOPE

The primary aim of *World Journal of Clinical Cases* (WJCC, *World J Clin Cases*) is to provide scholars and readers from various fields of clinical medicine with a platform to publish high-quality clinical research articles and communicate their research findings online.

WJCC mainly publishes articles reporting research results and findings obtained in the field of clinical medicine and covering a wide range of topics, including case control studies, retrospective cohort studies, retrospective studies, clinical trials studies, observational studies, prospective studies, randomized controlled trials, randomized clinical trials, systematic reviews, meta-analysis, and case reports.

INDEXING/ABSTRACTING

The WJCC is now indexed in Science Citation Index Expanded (also known as SciSearch®), Journal Citation Reports/Science Edition, PubMed, and PubMed Central. The 2020 Edition of Journal Citation Reports® cites the 2019 impact factor (IF) for WJCC as 1.013; IF without journal self cites: 0.991; Ranking: 120 among 165 journals in medicine, general and internal; and Quartile category: Q3.

RESPONSIBLE EDITORS FOR THIS ISSUE

Production Editor: Yan-Xia Xing; Production Department Director: Yun-Xiaojuan Wu; Editorial Office Director: Jin-Lai Wang.

NAME OF JOURNAL

World Journal of Clinical Cases

ISSN

ISSN 2307-8960 (online)

LAUNCH DATE

April 16, 2013

FREQUENCY

Semimonthly

EDITORS-IN-CHIEF

Dennis A Bloomfield, Sandro Vento, Bao-Gan Peng

EDITORIAL BOARD MEMBERS

<https://www.wjgnet.com/2307-8960/editorialboard.htm>

PUBLICATION DATE

September 6, 2020

COPYRIGHT

© 2020 Baishideng Publishing Group Inc

INSTRUCTIONS TO AUTHORS

<https://www.wjgnet.com/bpg/gerinfo/204>

GUIDELINES FOR ETHICS DOCUMENTS

<https://www.wjgnet.com/bpg/GerInfo/287>

GUIDELINES FOR NON-NATIVE SPEAKERS OF ENGLISH

<https://www.wjgnet.com/bpg/gerinfo/240>

PUBLICATION ETHICS

<https://www.wjgnet.com/bpg/GerInfo/288>

PUBLICATION MISCONDUCT

<https://www.wjgnet.com/bpg/gerinfo/208>

ARTICLE PROCESSING CHARGE

<https://www.wjgnet.com/bpg/gerinfo/242>

STEPS FOR SUBMITTING MANUSCRIPTS

<https://www.wjgnet.com/bpg/GerInfo/239>

ONLINE SUBMISSION

<https://www.f6publishing.com>

Diagnosis of an actively bleeding brachial artery hematoma by contrast-enhanced ultrasound: A case report

Jiao-Jiao Ma, Bo Zhang

ORCID number: Jiao-Jiao Ma 0000-0001-5331-6664; Bo Zhang 0000-0003-0632-8333.

Author contributions: Zhang B performed the contrast-enhanced ultrasound examination and contributed to manuscript drafting; Ma JJ reviewed the literature and contributed to manuscript drafting; Zhang B and Ma JJ analyzed and interpreted the imaging findings; Zhang B and Ma JJ were responsible for the revision of the manuscript for important intellectual content; all authors issued final approval for the version to be submitted.

Supported by the Peking Union Medical College and Chinese Academy of Medical Sciences, No. 201920102305.

Informed consent statement:

Informed written consent was obtained from the patient for publication of this report and any accompanying images.

Conflict-of-interest statement: The authors declare that they have no conflicts of interest.

CARE Checklist (2016) statement:

The authors have read the CARE Checklist (2016), and the manuscript was prepared and revised according to the CARE Checklist (2016).

Jiao-Jiao Ma, Bo Zhang, Department of Ultrasound, China-Japan Friendship Hospital, Beijing 100029, China

Corresponding author: Bo Zhang, MD, Chief Physician, Department of Medical Ultrasonics, China-Japan Friendship Hospital, No. 2 Yinghua East Road, Beijing 100029, China. zora19702006@163.com

Abstract

BACKGROUND

Active bleeding due to arterial injury following the acupuncture can sometimes represent a life-threatening complication. Only few reports of an actively bleeding hematoma diagnosed by contrast-enhanced ultrasound, which enables the depiction of vascular, have been reported.

CASE SUMMARY

Here, we report the case of a 75-year-old woman, who presented with sudden swelling, ecchymosis, and pain in the upper left limb. She underwent an acupuncture treatment of traditional Chinese medicine followed by a deep shoulder massage 2 d before admission to hospital. A few hours after the massage, her left upper arm was red, swollen and progressively aggravated. Ultrasonography showed a large hematoma (11.2 cm × 3.5 cm × 3.4 cm) beside the left brachial artery. Color Doppler ultrasound revealed that blood flow signals of the arteries branched into the hematoma. The contrast-enhanced ultrasound showed microbubbles from the brachial artery passing into the hematoma, diffused within the hematoma with the local surge of red blood cells, and disappearing after approximately 17 s. The microbubbles were likely due to bleeding from the arteries. After pressure bandaging treatment, the hematoma became smaller (3.1 cm × 1.7 cm) and organized according to ultrasonography performed 20 d later.

CONCLUSION

This case highlights the ultimate importance of contrast-enhanced ultrasound for the diagnosis of an actively bleeding hematoma.

Key words: Acupuncture; Ultrasonography; Bleeding; Contusion; Case report

©The Author(s) 2020. Published by Baishideng Publishing Group Inc. All rights reserved.

Open-Access: This article is an open-access article that was selected by an in-house editor and fully peer-reviewed by external reviewers. It is distributed in accordance with the Creative Commons Attribution NonCommercial (CC BY-NC 4.0) license, which permits others to distribute, remix, adapt, build upon this work non-commercially, and license their derivative works on different terms, provided the original work is properly cited and the use is non-commercial. See: <http://creativecommons.org/licenses/by-nc/4.0/>

Manuscript source: Unsolicited manuscript

Received: May 2, 2020

Peer-review started: May 2, 2020

First decision: May 21, 2020

Revised: July 16, 2020

Accepted: July 30, 2020

Article in press: July 30, 2020

Published online: September 6, 2020

P-Reviewer: Corvino A, Giorgio A, Isik A, Sartori S

S-Editor: Zhang L

L-Editor: Filipodia

P-Editor: Xing YX



Core tip: Active bleeding due to arterial injury following acupuncture can sometimes represent a life-threatening complication. We present herein, a rare case of actively bleeding brachial artery hematoma diagnosed by contrast-enhanced ultrasound (CEUS). CEUS enables the depiction of microvascularization, and has the potential to replace computed tomography in assessments for active bleeding. This case highlights the ultimate importance of CEUS for the diagnosis of an actively bleeding hematoma.

Citation: Ma JJ, Zhang B. Diagnosis of an actively bleeding brachial artery hematoma by contrast-enhanced ultrasound: A case report. *World J Clin Cases* 2020; 8(17): 3835-3840

URL: <https://www.wjgnet.com/2307-8960/full/v8/i17/3835.htm>

DOI: <https://dx.doi.org/10.12998/wjcc.v8.i17.3835>

INTRODUCTION

Acupuncture, which involves inserting needles into different parts or points of the body, has been increasingly used as an integrative or complementary therapy for pain^[1]. Complications are infrequent and usually resolve with minimal or no intervention, but major adverse events can occur^[2,3]. In particular, active bleeding due to arterial injury during the vascular access can sometimes represent a life-threatening complication needing prompt surgical or endovascular embolization therapy. Imaging is necessary to confirm the diagnosis^[4].

Ultrasonography is the imaging modality of choice, since it can provide detailed information about vascular anatomy without incurring the risks of invasive methods such as angiography or radiation^[5]. However, it is difficult for gray-scale ultrasound to detect whether the bleeding is still ongoing. Color Doppler ultrasound can help to detect active bleeding, but may fail when the blood flow velocity is low. Contrast-enhanced ultrasound (CEUS) enables the depiction of microvascularization and has the potential to replace contrast-enhanced computed tomography (CT) in assessments for active bleeding. Moreover, it reportedly detects perfusion changes and active extravasation, and internal bleeding can be seen as a pooling of contrast medium within the hematoma. CEUS is increasingly being used when active bleeding is suspected.

We report a case in which CEUS played a key role in the rapid detection of active bleeding from the left brachial artery following acupuncture and massage.

CASE PRESENTATION

Chief complaints

A 75-year-old woman presented to the outpatient surgery clinic with sudden swelling, ecchymosis, and pain in the left upper limb.

History of present illness

She went to a small traditional Chinese medicine clinic for acupuncture treatment for shoulder discomfort 2 d previous to hospital admission. Her grandson had then given her a deep shoulder massage after the acupuncture treatment. A few hours later, the upper left arm was red and swollen, progressively aggravated.

History of past illness

The patient had a free medical history.

Physical examination

The patient's temperature was 36.4 °C, heart rate was 85 bpm, respiratory rate was 15 breaths per minute, and blood pressure was 125/80 mmHg. The physical examination revealed swelling, ecchymosis, and pain in the left upper limb, without any other pathological signs. Our clinical consideration was first a hematoma.

Laboratory examinations

The hemoglobin value was slightly decreased at 10.9 g/dL. The blood biochemistries, prothrombin, partial thromboplastin times, d-dimers, as well as urine analysis were

normal.

Imaging examinations

Ultrasonography showed a large hematoma (11.2 cm × 3.5 cm × 3.4 cm) beside the brachial artery (Figure 1). The color Doppler ultrasound revealed that the blood flow signals of the arteries branched into the hematoma (Figure 2). Low mechanical index CEUS, with a bolus of 2.4 mL SonoVue, showed the accumulation of microbubbles within the hematoma, first detectable at 13 s. Microbubbles were seen emerging from the brachial artery and diffusing into the hematoma with the local surge of red blood cells, and they disappeared after approximately 23 s. The microbubbles were likely due to bleeding from the arteries (Figure 3).

FINAL DIAGNOSIS

The final diagnosis of the presented case is an actively bleeding brachial artery hematoma.

TREATMENT

The patient immediately underwent pressure-bandage treatment in the clinic.

OUTCOME AND FOLLOW-UP

The pain was controlled after pressure-bandage treatment. After 20 d, the hematoma became smaller (3.1 cm × 1.7 cm) and organized according to ultrasonography (Figure 4).

DISCUSSION

Acupuncture is a safe and commonly applied therapy in China, but rupture of the arteries may be a complication of the technique^[6]. Pseudoaneurysm is formed when there is a break in the vessel wall, so the extravasation of blood dissects the surrounding tissues, and an aneurysm sac, which retains a communication with the parent arterial lumen, is created. Then the pseudoaneurysm wall is formed by organizing hematoma and fibrous tissue. Under the influence of high arterial pressure the sac usually tends to enlarge, with a sustained risk of its rupture and hemorrhage^[5]. Pressure bandaging is the main treatment for this adverse event, and deep massage should be forbidden. In this case, the hematoma might have been caused by an acupuncture needle puncturing the left brachial artery, and the intense massage aggravated the contusion of the artery.

The management of hematoma depends on the accurate diagnosis of any ongoing bleeding and identification of the type of injured vessel. Although most cases can be managed conservatively, patients with active bleeding should be monitored, and those with hemodynamic instability or ongoing blood loss might require embolization or surgical intervention^[7].

CT and magnetic resonance imaging may be useful to see associated intracranial trauma, if there is a history trauma, but are not suggested for first-line imaging in sub-acute/chronic setting. The definitive diagnosis can be made with angiography, but, as this is an invasive test it is should be reserved for those to be treated directly^[8]. The hematoma is easily found with gray-scale ultrasound, and its size, location, echo-structure, and relationship with the surrounding tissue can be identified^[9]; most hemodynamic characteristics of tissues are better displayed by color Doppler^[10,11]. However, it is often difficult to detect deep, limited location, or low-velocity blood flow because of the limitation of gray-scale and Doppler technology, thus affecting the accuracy of ultrasonic diagnosis^[12]. However, CEUS can play an important role in accurately determining the bleeding activity, by showing the blood flow distribution and providing more complete information, further improving the accuracy of ultrasonic diagnosis^[13,14]. A new study showed the use of a gel stand-off pad allows the detection of otherwise-missed peri- or intra-lesional flow signals on Doppler imaging,

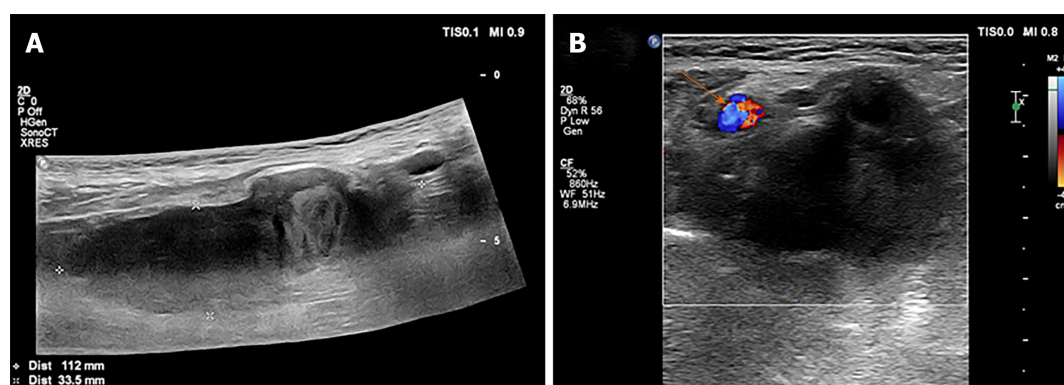


Figure 1 Findings of gray-scale ultrasound. A and B: The gray-scale ultrasound revealed a mainly hypoechoic mass of approximately 11.2 cm × 3.5 cm × 3.4 cm beside the left brachial artery (arrow), with a hyperechoic area of approximately 3.3 cm × 2.3 cm and an anechoic area of about 0.7 cm × 0.3 cm.

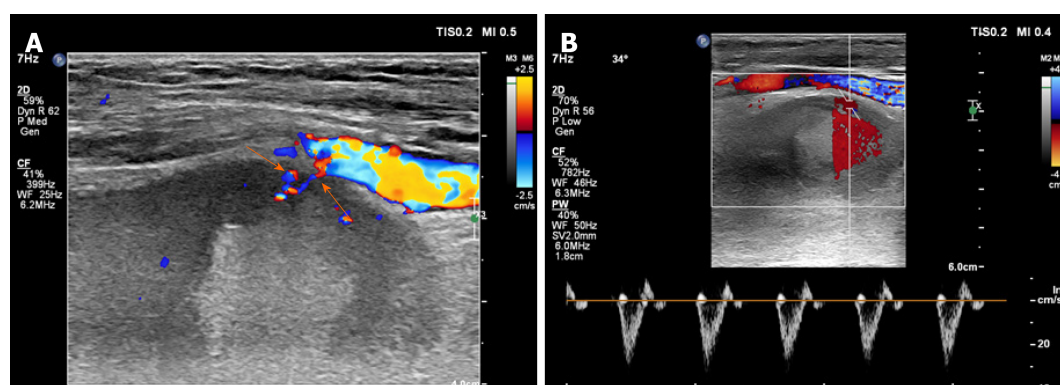


Figure 2 Findings of color Doppler ultrasound. A: The color Doppler ultrasound revealed blood flow signals of arteries branching into the hematoma (arrow); B: A narrow band of blood flow was detected in the hypoechoic area with a three-phase wave arterial flow spectrum.

increasing the diagnostic role of this technique in differential diagnosis of superficial lesions^[15]. The use of a gel stand-off pad might make less microbubbles blasting on CEUS imaging.

In this case, CEUS was used rapidly diagnose ongoing bleeding at the bedside. In addition, the time recording feature allowed the determination of an artery bleed, which correlated with the color Doppler findings. CEUS is a promising diagnostic alternative, particularly for patients for whom CT is either contraindicated or less desirable, and warrants further investigation^[16,17].

CONCLUSION

Only scarce reports of an actively bleeding hematoma diagnosed by CEUS has been reported. CEUS enabled the depiction of vascular. This case highlights the ultimate importance of CEUS for the diagnosis of an actively bleeding hematoma.

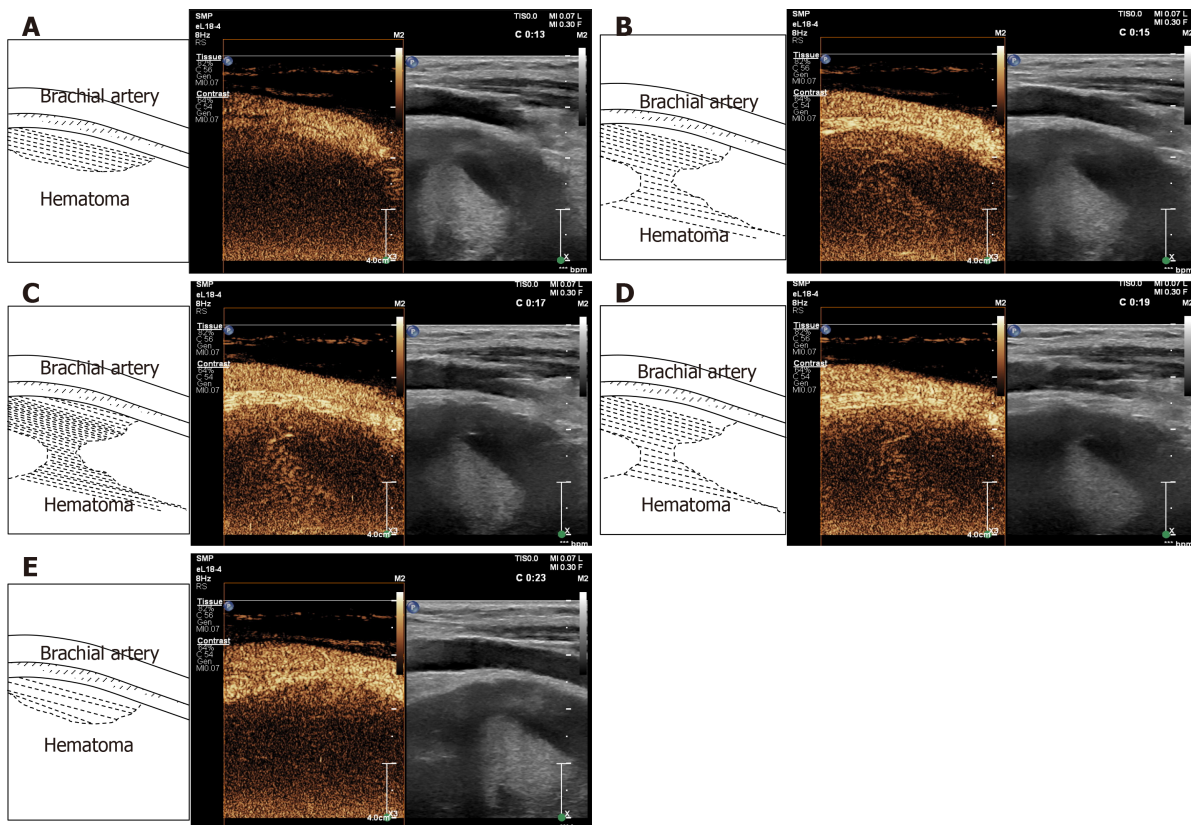


Figure 3 Findings of contrast-enhanced ultrasound. A: Microbubbles were first detected at 13 s emerging from the brachial artery into the hematoma; B-D: Microbubbles diffused into the hematoma with the local surge of red blood cells; E: Microbubbles disappeared after approximately 23 s.

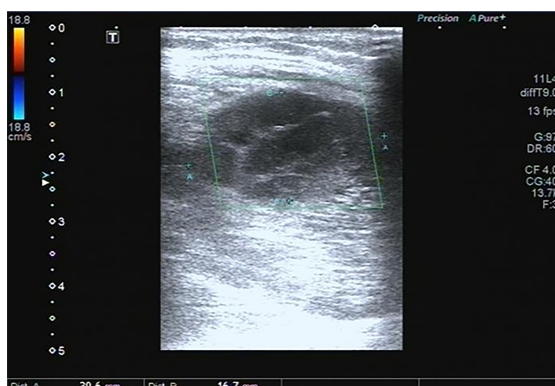


Figure 4 Findings of ultrasound 20 d later. After pressure bandaging treatment, the hematoma became smaller (3.1 cm × 1.7 cm) and organized.

REFERENCES

- 1 Kelly RB, Willis J. Acupuncture for Pain. *Am Fam Physician* 2019; **100**: 89-96
- 2 Vickers AJ, Vertosick EA, Lewith G, MacPherson H, Foster NE, Sherman KJ, Irnich D, Witt CM, Linde K; Acupuncture Trialists' Collaboration. Acupuncture for Chronic Pain: Update of an Individual Patient Data Meta-Analysis. *J Pain* 2018; **19**: 455-474 [PMID: 29198932 DOI: 10.1016/j.jpain.2017.11.005]
- 3 Zhuang Y, Xing JJ, Li J, Zeng BY, Liang FR. History of acupuncture research. *Int Rev Neurobiol* 2013; **111**: 1-23 [PMID: 24215915 DOI: 10.1016/B978-0-12-411545-3.00001-8]
- 4 Tombesi P, Di Vece F, Ermili F, Sartori S. Active bleeding revealed by contrast-enhanced ultrasonography: beyond the abdominal cavity. *J Med Ultrason (2001)* 2014; **41**: 247-249 [PMID: 27277782 DOI: 10.1007/s10396-013-0493-9]
- 5 Corvino A, Catalano O, Corvino F, Sandomenico F, Setola SV, Petrillo A. Superficial temporal artery pseudoaneurysm: what is the role of ultrasound? *J Ultrasound* 2016; **19**: 197-201 [PMID: 27635165 DOI: 10.1007/s40477-016-0211-8]
- 6 Li NC, Li MY, Chen B, Guo Y. A New Perspective of Acupuncture: The Interaction among Three Networks Leads to Neutralization. *Evid Based Complement Alternat Med* 2019; **2019**: 2326867 [PMID: 30915143 DOI: 10.1155/2019/2326867]

- 7 **Salemis NS**, Gourgiotis S, Karalis G. Diagnostic evaluation and management of patients with rectus sheath hematoma. A retrospective study. *Int J Surg* 2010; **8**: 290-293 [PMID: [20227535](#) DOI: [10.1016/j.ijsu.2010.02.011](#)]
- 8 **Walker MT**, Liu BP, Salehi SA, Badve S, Batjer HH. Superficial temporal artery pseudoaneurysm: diagnosis and preoperative planning with CT angiography. *AJNR Am J Neuroradiol* 2003; **24**: 147-150 [PMID: [12533345](#)]
- 9 **Di Vece F**, Tombesi P, Bianchi L, Bertini M, Sartori S. Contrast-enhanced ultrasonography of post-interventional hematoma: the bleeding mushroom is growing inside. *J Med Ultrason (2001)* 2018; **45**: 661-663 [PMID: [29453674](#) DOI: [10.1007/s10396-018-0871-4](#)]
- 10 **Giovagnorio F**, Andreoli C, De Cicco ML. Color Doppler sonography of focal lesions of the skin and subcutaneous tissue. *J Ultrasound Med* 1999; **18**: 89-93 [PMID: [10206814](#) DOI: [10.7863/jum.1999.18.2.89](#)]
- 11 **Catalano O**, Roldán FA, Varelli C, Bard R, Corvino A, Wortsman X. Skin cancer: findings and role of high-resolution ultrasound. *J Ultrasound* 2019; **22**: 423-431 [PMID: [31069756](#) DOI: [10.1007/s40477-019-00379-0](#)]
- 12 **Isik A**, Karavas E, Firat D. Spontaneous milk fistula from an axillary accessory breast. *Breast J* 2019; **25**: 154 [PMID: [30576079](#) DOI: [10.1111/tbj.13174](#)]
- 13 **Corvino A**, Sandomenico F, Setola SV, Corvino F, Pinto F, Catalano O. Added value of contrast-enhanced ultrasound (CEUS) with Sonovue® in the diagnosis of inferior epigastric artery pseudoaneurysm: report of a case and review of literature. *J Ultrasound* 2019; **22**: 485-489 [PMID: [31327113](#) DOI: [10.1007/s40477-019-00398-x](#)]
- 14 **Corvino A**, Pignata S, Campanino MR, Corvino F, Giurazza F, Tafuri D, Pinto F, Catalano O. Thyroglossal duct cysts and site-specific differential diagnoses: imaging findings with emphasis on ultrasound assessment. *J Ultrasound* 2020; **23**: 139-149 [PMID: [32052384](#) DOI: [10.1007/s40477-020-00433-2](#)]
- 15 **Corvino A**, Sandomenico F, Corvino F, Campanino MR, Verde F, Giurazza F, Tafuri D, Catalano O. Utility of a gel stand-off pad in the detection of Doppler signal on focal nodular lesions of the skin. *J Ultrasound* 2020; **23**: 45-53 [PMID: [30927249](#) DOI: [10.1007/s40477-019-00376-3](#)]
- 16 **Guo Q**, Zhao J, Huang B, Yuan D, Yang Y, Zeng G, Xiong F, Du X. A Systematic Review of Ultrasound or Magnetic Resonance Imaging Compared With Computed Tomography for Endoleak Detection and Aneurysm Diameter Measurement After Endovascular Aneurysm Repair. *J Endovasc Ther* 2016; **23**: 936-943 [PMID: [27542700](#) DOI: [10.1177/1526602816664878](#)]
- 17 **Tombesi P**, Di Vece F, Salviato E, Galeotti R, Sartori S. Spontaneous active bleeding in thoracoacromial artery diagnoses by contrast-enhanced ultrasound - a case report. *Ultraschall Med* 2012; **33**: E355-E356 [PMID: [23023452](#) DOI: [10.1055/s-0032-1325325](#)]



Published by **Baishideng Publishing Group Inc**
7041 Koll Center Parkway, Suite 160, Pleasanton, CA 94566, USA

Telephone: +1-925-3991568

E-mail: bpgoffice@wjgnet.com

Help Desk: <https://www.f6publishing.com/helpdesk>

<https://www.wjgnet.com>

