

# World Journal of *Clinical Cases*

*World J Clin Cases* 2020 September 26; 8(18): 3920-4279



## Contents

Semimonthly Volume 8 Number 18 September 26, 2020

## OPINION REVIEW

- 3920 Special features of SARS-CoV2 in daily practice  
*Charitos IA, Ballini A, Bottalico L, Cantore S, Passarelli PC, Inchingolo F, D'Addona A, Santacroce L*

## EVIDENCE REVIEW

- 3934 Gastrointestinal insights during the COVID-19 epidemic  
*Nie K, Yang YY, Deng MZ, Wang XY*

## REVIEW

- 3942 From infections to autoimmunity: Diagnostic challenges in common variable immunodeficiency  
*Więsik-Szewczyk E, Jahnz-Różyk K*
- 3956 One disease, many faces-typical and atypical presentations of SARS-CoV-2 infection-related COVID-19 disease  
*Philips CA, Mohan N, Ahamed R, Kumbar S, Rajesh S, George T, Mohanan M, Augustine P*

## MINIREVIEWS

- 3971 Application of artificial neural networks in detection and diagnosis of gastrointestinal and liver tumors  
*Mao WB, Lyu JY, Vaishnani DK, Lyu YM, Gong W, Xue XL, Shentu YP, Ma J*
- 3978 Hepatic epithelioid hemangioendothelioma: Update on diagnosis and therapy  
*Kou K, Chen YG, Zhou JP, Sun XD, Sun DW, Li SX, Lv GY*

## ORIGINAL ARTICLE

## Clinical and Translational Research

- 3988 *Streptococcus agalactiae*: Identification methods, antimicrobial susceptibility, and resistance genes in pregnant women  
*Santana FAF, de Oliveira TVL, Filho MBDS, da Silva LSC, de Brito BB, de Melo FF, Souza CL, Marques LM, Oliveira MV*
- 3999 Twelve-month evaluation of the atraumatic restorative treatment approach for class III restorations: An interventional study  
*Shivanna MM, Ganesh S, Khanagar SB, Naik S, Divakar DD, Al-Kheraif AA, Jhugroo C*

## Case Control Study

- 4010 Effects of different doses of metformin on bone mineral density and bone metabolism in elderly male patients with type 2 diabetes mellitus  
*Wang LX, Wang GY, Su N, Ma J, Li YK*

- 4017** Relationship between granulomatous lobular mastitis and methylene tetrahydrofolate reductase gene polymorphism

*Lei QR, Yang X, Miao CM, Wang JC, Yang Y*

### Retrospective Cohort Study

- 4022** First-line chemotherapy in very elderly patients with metastatic pancreatic cancer: Gemcitabine monotherapy vs combination chemotherapy

*Han SY, Kim DU, Seol YM, Kim S, Lee NK, Hong SB, Seo HI*

### Retrospective Study

- 4034** Pre- and intraoperative predictors of acute kidney injury after liver transplantation

*Mrzljak A, Franusic L, Pavicic-Saric J, Kelava T, Jurekovic Z, Kocman B, Mikulic D, Budimir-Bekan I, Knotek M*

- 4043** Clinical value of needleless sling in treatment of female stress urinary incontinence

*Chen YG, Zhang YG, Zhang W, Li X, Wang X*

- 4051** Intratympanic dexamethasone injection for sudden sensorineural hearing loss in pregnancy

*Lyu YL, Zeng FQ, Zhou Z, Yan M, Zhang W, Liu M, Ke ZY*

- 4059** Research on the effect of health care integration on patients' negative emotions and satisfaction with lung cancer nursing activities

*Long FJ, Chen H, Wang YF, He LM, Chen L, Liang ZB, Chen YN, Gong XH*

- 4067** Comparison between computed tomography and magnetic resonance imaging in clinical diagnosis and treatment of tibial platform fractures

*Liu XD, Wang HB, Zhang TC, Wan Y, Zhang CZ*

### SYSTEMATIC REVIEWS

- 4075** Primary sclerosing cholangitis and autoimmune hepatitis overlap syndrome associated with inflammatory bowel disease: A case report and systematic review

*Ballotin VR, Bigarella LG, Riva F, Onzi G, Balbinot RA, Balbinot SS, Soldera J*

### CASE REPORT

- 4094** Epidermolytic acanthoma: A case report

*Ginsberg AS, Rajagopalan A, Terlizzi JP*

- 4100** Management of pembrolizumab-induced steroid refractory mucositis with infliximab: A case report

*Dang H, Sun J, Wang G, Renner G, Layfield L, Hilli J*

- 4109** Small bowel obstruction caused by a bezoar following an adult simultaneous liver-kidney transplantation: A case report

*Pan G, Kim RD, Campsen J, Rofaiel G*

- 4114** Laparoscopic resection of primary retroperitoneal schwannoma: A case report

*Ribeiro Jr MAF, Elias YGB, Augusto SDS, Nêder PR, Costa CT, Mauricio AD, Sampaio AP, Fonseca AZ*

- 4122** Sweet syndrome as a paraneoplastic manifestation of cholangiocarcinoma: A case report  
*Lemaire CC, Portilho ALC, Pinheiro LV, Vivas RA, Britto M, Montenegro M, Rodrigues LFDF, Arruda S, Lyra AC, Cavalcante LN*
- 4128** Multidisciplinary approach to suspected sudden unexpected infant death caused by milk-aspiration: A case report  
*Maiese A, La Russa R, Arcangeli M, Volonnino G, De Matteis A, Frati P, Fineschi V*
- 4135** Stress fractures in uncommon location: Six case reports and review of the literature  
*Ficek K, Cyganik P, Rajca J, Racut A, Kiełtyka A, Grzywocz J, Hajduk G*
- 4151** Celiac disease and Sjögren's syndrome: A case report and review of literature  
*Balaban DV, Mihai A, Dima A, Popp A, Jinga M, Jurcut C*
- 4162** Nonasthmatic eosinophilic bronchitis in an ulcerative colitis patient – a putative adverse reaction to mesalazine: A case report and review of literature  
*Cernomaz AT, Bordeianu G, Terinte C, Gavrilescu CM*
- 4169** Insulinoma presenting with postprandial hypoglycemia and a low body mass index: A case report  
*Přidavková D, Samoš M, Kyčina R, Adamicová K, Kalman M, Belicová M, Mokáň M*
- 4177** Neoadjuvant chemoradiotherapy for locally advanced gastric cancer with bulky lymph node metastasis: Five case reports  
*Nomura E, Kayano H, Machida T, Izumi H, Yamamoto S, Sugawara A, Mukai M, Hasebe T*
- 4186** Unilateral pleuroparenchymal fibroelastosis as a rare form of idiopathic interstitial pneumonia: A case report  
*Lee JH, Jang HJ, Park JH, Kim HK, Lee S, Kim JY, Kim SH*
- 4193** Superior mesenteric vein thrombosis induced by influenza infection: A case report  
*Oh GM, Jung K, Kim JH, Kim SE, Moon W, Park MI, Park SJ*
- 4200** Mucinous adenocarcinoma of the buttock associated with hidradenitis: A case report  
*Kim SJ, Kim TG, Gu MJ, Kim S*
- 4207** TFE3-expressing malignant perivascular epithelioid cell tumor of the mesentery: A case report and review of literature  
*Kim NI, Lee JS, Choi YD, Ju UC, Nam JH*
- 4215** Robotic surgery in giant multilocular cystadenoma of the prostate: A rare case report  
*Fan LW, Chang YH, Shao IH, Wu KF, Pang ST*
- 4223** Multiple recurrent neurofibromas in the abdominal wall: A case report  
*Zhao XF, Shen YM, Chen J*
- 4228** Mine disaster survivor's pelvic floor hernia treated with laparoscopic surgery and a perineal approach: A case report  
*Chen K, Lan YZ, Li J, Xiang YY, Zeng DZ*



- 4234** Successful treatment of encrusted cystitis: A case report and review of literature  
*Fu JG, Xie KJ*
- 4245** Massive pulmonary haemorrhage due to severe trauma treated with repeated alveolar lavage combined with extracorporeal membrane oxygenation: A case report  
*Zhang BY, Chen XC, You Y, Chen M, Yu WK*
- 4252** Gitelman syndrome caused by a rare homozygous mutation in the *SLC12A3* gene: A case report  
*Yu RZ, Chen MS*
- 4259** Arterial embolism caused by a peripherally inserted central catheter in a very premature infant: A case report and literature review  
*Huang YF, Hu YL, Wan XL, Cheng H, Wu YH, Yang XY, Shi J*
- 4266** Left bundle branch pacing with optimization of cardiac resynchronization treatment: A case report  
*Zhang DH, Lang MJ, Tang G, Chen XX, Li HF*
- 4272** Lymphoplasmacyte-rich meningioma with atypical cystic-solid feature: A case report  
*Gu KC, Wan Y, Xiang L, Wang LS, Yao WJ*

**ABOUT COVER**

Editorial board member of *World Journal of Clinical Cases*, Dr. Li is a Professor at the Nanjing University Medical School in Nanjing, China. Having received his Bachelor's degree from Xuzhou Medical College in 1997, Dr. Li undertook his postgraduate training first at Nanjing Medical University, receiving his Master's degree in 2004, and then at Fudan University, receiving his PhD in 2007. He advanced to Chief Physician in the Department of Anesthesiology at The Affiliated Hospital of Nanjing University Medical School in 2017 and has held the position since. His ongoing research interests involve ultrasound (transthoracic echo and transesophageal echo) in clinical anesthesia and ultrasound-guided limb and trunk nerve block in postoperative pain management. (L-Editor: Filipodia)

**AIMS AND SCOPE**

The primary aim of *World Journal of Clinical Cases* (*WJCC*, *World J Clin Cases*) is to provide scholars and readers from various fields of clinical medicine with a platform to publish high-quality clinical research articles and communicate their research findings online.

*WJCC* mainly publishes articles reporting research results and findings obtained in the field of clinical medicine and covering a wide range of topics, including case control studies, retrospective cohort studies, retrospective studies, clinical trials studies, observational studies, prospective studies, randomized controlled trials, randomized clinical trials, systematic reviews, meta-analysis, and case reports.

**INDEXING/ABSTRACTING**

The *WJCC* is now indexed in Science Citation Index Expanded (also known as SciSearch®), Journal Citation Reports/Science Edition, PubMed, and PubMed Central. The 2020 Edition of Journal Citation Reports® cites the 2019 impact factor (IF) for *WJCC* as 1.013; IF without journal self cites: 0.991; Ranking: 120 among 165 journals in medicine, general and internal; and Quartile category: Q3.

**RESPONSIBLE EDITORS FOR THIS ISSUE**

Production Editor: Ji-Hong Liu; Production Department Director: Xiang Li; Editorial Office Director: Jin-Lai Wang.

**NAME OF JOURNAL**

*World Journal of Clinical Cases*

**ISSN**

ISSN 2307-8960 (online)

**LAUNCH DATE**

April 16, 2013

**FREQUENCY**

Semimonthly

**EDITORS-IN-CHIEF**

Dennis A Bloomfield, Sandro Vento, Bao-Gan Peng

**EDITORIAL BOARD MEMBERS**

<https://www.wjgnet.com/2307-8960/editorialboard.htm>

**PUBLICATION DATE**

September 26, 2020

**COPYRIGHT**

© 2020 Baishideng Publishing Group Inc

**INSTRUCTIONS TO AUTHORS**

<https://www.wjgnet.com/bpg/gerinfo/204>

**GUIDELINES FOR ETHICS DOCUMENTS**

<https://www.wjgnet.com/bpg/GerInfo/287>

**GUIDELINES FOR NON-NATIVE SPEAKERS OF ENGLISH**

<https://www.wjgnet.com/bpg/gerinfo/240>

**PUBLICATION ETHICS**

<https://www.wjgnet.com/bpg/GerInfo/288>

**PUBLICATION MISCONDUCT**

<https://www.wjgnet.com/bpg/gerinfo/208>

**ARTICLE PROCESSING CHARGE**

<https://www.wjgnet.com/bpg/gerinfo/242>

**STEPS FOR SUBMITTING MANUSCRIPTS**

<https://www.wjgnet.com/bpg/GerInfo/239>

**ONLINE SUBMISSION**

<https://www.f6publishing.com>



## TFE3-expressing malignant perivascular epithelioid cell tumor of the mesentery: A case report and review of literature

Nah Ihm Kim, Ji Shin Lee, Yoo Duk Choi, U Chul Ju, Jong Hee Nam

**ORCID number:** Nah Ihm Kim 0000-0001-6215-8549; Ji Shin Lee 0000-0003-4634-2228; Yoo Duk Choi 0000-0002-4385-1759; U Chul Ju 0000-0002-0483-338X; Jong Hee Nam 0000-0001-5991-7102.

**Author contributions:** Kim NI and Nam JH are pathologists that participated in the concept of the study, reviewed the literature, interpreted the H&E slides, and immunohistochemistry slides; Lee JS and Choi YD, as pathologists, contributed to drafting of the manuscript; Ju UC is a gynecological surgeon that performed the operation and was responsible for patient care; all authors read and approved the final manuscript.

**Informed consent statement:** Written informed consent was obtained from the patient for publication of this case report and any accompanying images.

**Conflict-of-interest statement:** The authors declare that they have no conflict of interest.

**CARE Checklist (2016) statement:** The authors have read the CARE Checklist (2016), and the manuscript was prepared and revised according to the CARE Checklist (2016).

**Open-Access:** This article is an

**Nah Ihm Kim, Yoo Duk Choi, Jong Hee Nam,** Department of Pathology, Chonnam National University Hospital and Medical School, Gwangju 61469, South Korea

**Ji Shin Lee,** Department of Pathology, Chonnam National University Hwasun Hospital and Medical School, Hwasun 58128, South Korea

**U Chul Ju,** Department of Obstetrics and Gynecology, Chonnam National University Hwasun Hospital and Medical School, Hwasun 58128, South Korea

**Corresponding author:** Jong Hee Nam, MD, PhD, Professor, Department of Pathology, Chonnam National University Hospital and Medical School, 42 Jebong-ro, Gwangju 61469, South Korea. [jhnam@chonnam.ac.kr](mailto:jhnam@chonnam.ac.kr)

### Abstract

#### BACKGROUND

Perivascular epithelioid cell tumor (PEComa) is a rare mesenchymal tumor that exhibits an epithelioid and spindle cell morphology. The tumor is characterized by immunoreactivity for melanocytic and myogenic markers but can be misdiagnosed as more common tumors with similar characteristics, including gastrointestinal stroma tumors or leiomyosarcomas. Recently, a subset of PEComas has been reported to harbor a transcription factor binding to *TFE3* fusion. Herein, we report a rare case of *TFE3*-expressing malignant PEComa arising from the mesentery.

#### CASE SUMMARY

A 50-year-old woman presented with abdominal discomfort for 3 months. Results of laboratory tests were all within the normal ranges, and the patient had no notable medical history. Magnetic resonance imaging revealed a large tumor on the right side of the pelvic floor, which was originally suspected to be a primary ovarian tumor. However, during surgery, the tumor was revealed to have originated from the mesentery. Histologically, the tumor was composed of bundles of spindle cells and sheets of epithelioid cells. Extensive coagulative necrosis and numerous mitotic figures were observed. Immunohistochemistry revealed that the tumor cells were positive for smooth muscle actin, HMB-45, and *TFE3* expression. Tumor involvement of the rectal serosa was identified, leading to a final diagnosis of malignant PEComa of the mesentery. Surgical resection was followed by adjuvant chemotherapy. No recurrence or metastasis was observed over a 6-month follow-up period.

open-access article that was selected by an in-house editor and fully peer-reviewed by external reviewers. It is distributed in accordance with the Creative Commons Attribution NonCommercial (CC BY-NC 4.0) license, which permits others to distribute, remix, adapt, build upon this work non-commercially, and license their derivative works on different terms, provided the original work is properly cited and the use is non-commercial. See: <http://creativecommons.org/licenses/by-nc/4.0/>

**Manuscript source:** Unsolicited manuscript

**Received:** April 14, 2020

**Peer-review started:** April 14, 2020

**First decision:** July 25, 2020

**Revised:** July 30, 2020

**Accepted:** August 25, 2020

**Article in press:** August 25, 2020

**Published online:** September 26, 2020

**P-Reviewer:** Yu B

**S-Editor:** Yan JP

**L-Editor:** A

**P-Editor:** Li JH



## CONCLUSION

Malignant PEComa of the mesentery is extremely rare and should be distinguished from morphological mimics through differential diagnosis and immunohistochemistry.

**Key Words:** Perivascular epithelioid cell tumor; *TFE3*; Differential diagnosis; Mesentery; Histology; Case report

©The Author(s) 2020. Published by Baishideng Publishing Group Inc. All rights reserved.

**Core Tip:** Primary mesenchymal tumors originating from the mesentery are rare and can only be diagnosed histologically. Broad differential diagnoses and immunohistochemical analyses are required along with consideration of perivascular epithelioid cell tumor among differential diagnoses.

**Citation:** Kim NI, Lee JS, Choi YD, Ju UC, Nam JH. *TFE3*-expressing malignant perivascular epithelioid cell tumor of the mesentery: A case report and review of literature. *World J Clin Cases* 2020; 8(18): 4207-4214

**URL:** <https://www.wjgnet.com/2307-8960/full/v8/i18/4207.htm>

**DOI:** <https://dx.doi.org/10.12998/wjcc.v8.i18.4207>

## INTRODUCTION

Perivascular epithelioid cell tumor (PEComa) is an uncommon mesenchymal neoplasm. Bonetti *et al.*<sup>[1,2]</sup> first described this rare tumor type in 1992, and Zamboni *et al.*<sup>[3]</sup> subsequently coined the term “PEComa” in 1996. The World Health Organization recognized PEComa as a distinct tumor entity in 2002<sup>[4]</sup>. In 2005, Folpe *et al.*<sup>[5]</sup> first reported four patients with PEComa of the mesentery. Including this first case series, to the best of our knowledge, only nine cases of primary PEComa of the mesentery have been reported to date<sup>[5-10]</sup>. Since PEComa is a rare disease, other more common tumors such as gastrointestinal stroma tumor or leiomyosarcoma that show similar morphological characteristics will first be considered in the context of a differential diagnosis.

Histologically, PEComas are composed of epithelioid and spindle cells with radial growth around blood vessels. The characteristic expression of myogenic and melanocytic markers supports a diagnosis of PEComa<sup>[11]</sup>. Recently, molecular studies identified a subset of PEComas with transcription factor binding to *TFE3* rearrangement, suggesting that PEComas harboring *TFE3* fusions may represent a distinct disease entity<sup>[12]</sup>.

Herein, we describe a rare case of malignant PEComa originating from the mesentery and provide guidance for improving differential diagnosis of this tumor along with a review of the relevant literature.

## CASE PRESENTATION

### Chief complaints

A 50-year-old woman was admitted to the gynecology department of Chonnam National University Hospital with complaints of abdominal discomfort.

### History and present illness

The patient exhibited symptoms 3 months prior to admission, and initial sonography performed in a primary health care center revealed an ovarian tumor of 8 cm × 6 cm × 6 cm at that time. The patient was then referred to a tertiary hospital for further evaluation and treatment.

### History of past illness

The patient had no history of diabetes, hypertension, or other gynecological disease.

**Personal and family history**

The patient had no significant personal or family medical history.

**Physical examination**

The patient did not exhibit weight loss, palpable lymphadenopathy, or organomegaly.

**Laboratory examinations**

Results of laboratory tests, including carcinoembryonic antigen and cancer antigen 125 levels, and Risk of Ovarian Malignancy Algorithm score were all in the normal range.

**Imaging examinations**

Magnetic resonance imaging revealed a large heterogeneous mass (8 cm × 6.5 cm × 7 cm) occupying the pelvic cavity (Figure 1). Based on this finding and location, the preoperative diagnosis was malignant ovarian tumor. A chest computed tomography (CT) scan showed no evidence of distant metastasis to the thorax.

---

**FINAL DIAGNOSIS**

---

The final diagnosis was malignant PEComa of the mesentery with rectal involvement.

---

**TREATMENT**

---

The patient underwent total hysterectomy with bilateral salpingo-oophorectomy and pelvic lymph node dissection. A large mass was identified on the right side of the pelvic cavity, which was attached to the mesentery. The right ovary and fallopian tube were grossly normal. The rectum was also partially resected owing to suspicion of tumor involvement in the serosa.

Upon macroscopic examination, the lesion appeared as a white-to-tan solid mass. A cross section of the tumor revealed that the mass was lobulated, did not have a fibrous capsule, and had a focal area of necrosis (Figure 2).

Histologically, the tumor appeared as a high-grade spindle cell sarcoma with involvement of the rectal serosa. No metastases were found in the regional lymph nodes. The tumor was composed of fascicles of spindle cells with an infiltrative growth pattern. The majority of the tumor cells exhibited marked atypia with dispersed chromatin and macronucleoli. Extensive coagulative necrosis was observed with substantial mitotic activity detected reaching up to 40 mitoses per 10 high-power fields. Epithelioid foci were also identified. Nests of large epithelioid cells were surrounded by a delicate vasculature in a radial manner. The tumor cells displayed large, vesicular nuclei with prominent nucleoli and an abundant eosinophilic granular cytoplasm with striking pleomorphism (Figure 3).

Immunohistochemistry revealed that the tumor expressed HMB45, smooth muscle actin, and *TFE3*, but was negative for *Melan A*, Desmin, CD117, CD34, CD68, Myogenin, S100, *MDM2*, and *CDK4* (Figure 3). Thus, histopathological and immunohistochemical examinations confirmed the diagnosis of malignant PEComa.

Subsequently, whole-body positron emission tomography/CT scan were performed to check for possible metastases; however, no abnormality was found. Following surgery, the patient was treated with sirolimus chemotherapy.

---

**OUTCOME AND FOLLOW-UP**

---

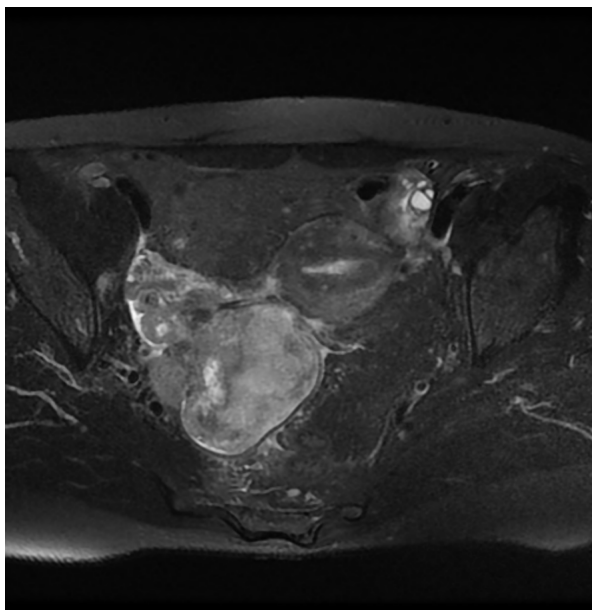
No recurrence or metastasis was observed during a 6-month follow-up period.

---

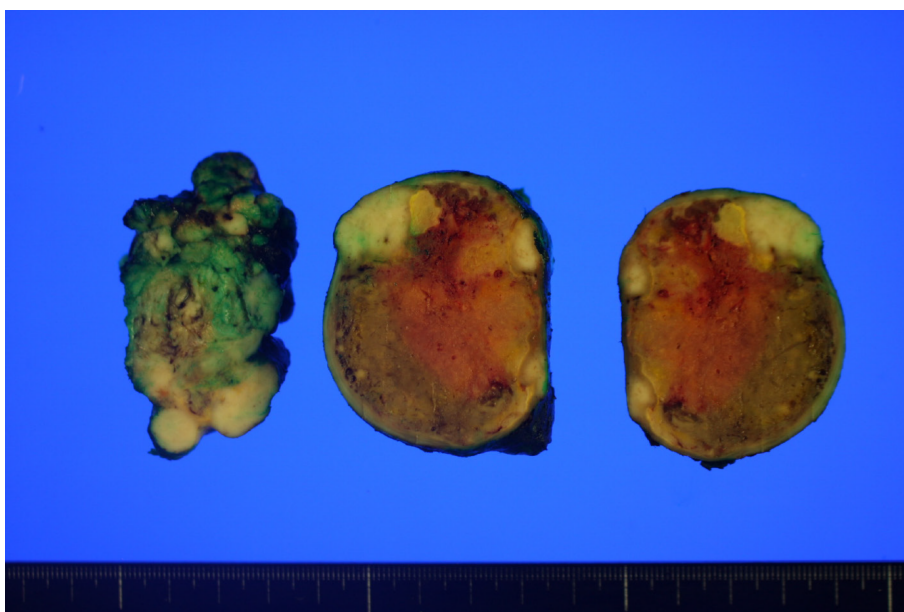
**DISCUSSION**

---

PEComa is a rare mesenchymal tumor composed of histologically and immunohistochemically distinct perivascular epithelioid cells. The tumor cells exhibit an epithelioid and spindle morphology and express melanocytic and myogenic markers<sup>[1]</sup>. Although the histogenesis and the normal counterpart of PEComa remain unknown, the term “PEComa” is widely accepted to include angiomyolipoma of the



**Figure 1** Pelvis magnetic resonance imaging showing heterogeneously enhancing mass (8 cm × 6 cm × 6 cm) occupying right pelvic cavity.



**Figure 2** Gross findings exhibiting a relatively well-circumscribed white to tan solid mass with focal necrosis.

kidney, clear-cell “sugar” tumor or lymphangioleiomyomatosis of the lung, and other tumors originating from various anatomical sites<sup>[13,14]</sup>.

PEComas have been described in various organs; however, the majority are gynecological and gastrointestinal in origin<sup>[5,15-17]</sup>. Mesenteric PEComas are extremely rare, with only nine cases reported to date. A literature review revealed that mesenteric PEComas affect women more often than men (male:female = 20:80), regardless of age<sup>[5-10]</sup>. Seven out of ten reported cases, including the present case, were considered to be malignant PEComa exhibiting worrisome features, with only one case showing lymph node involvement. The majority of cases diagnosed as malignant PEComa were treated by surgical resection followed by adjuvant chemotherapy; however, the tumors recurred within 6-22 months in two cases<sup>[5-10]</sup> (Table 1).

Microscopically, these tumors consist of bundles of spindle cells and sheets of epithelioid cells located around the blood vessels, and the tumor cells show striking pleomorphism with elevated mitotic activity. Such tumors with unusual locations and histopathological features may pose a diagnostic challenge, and differential diagnoses



**Table 1** Clinicopathologic features of mesenteric perivascular epithelioid cell tumor described previous and in present reports

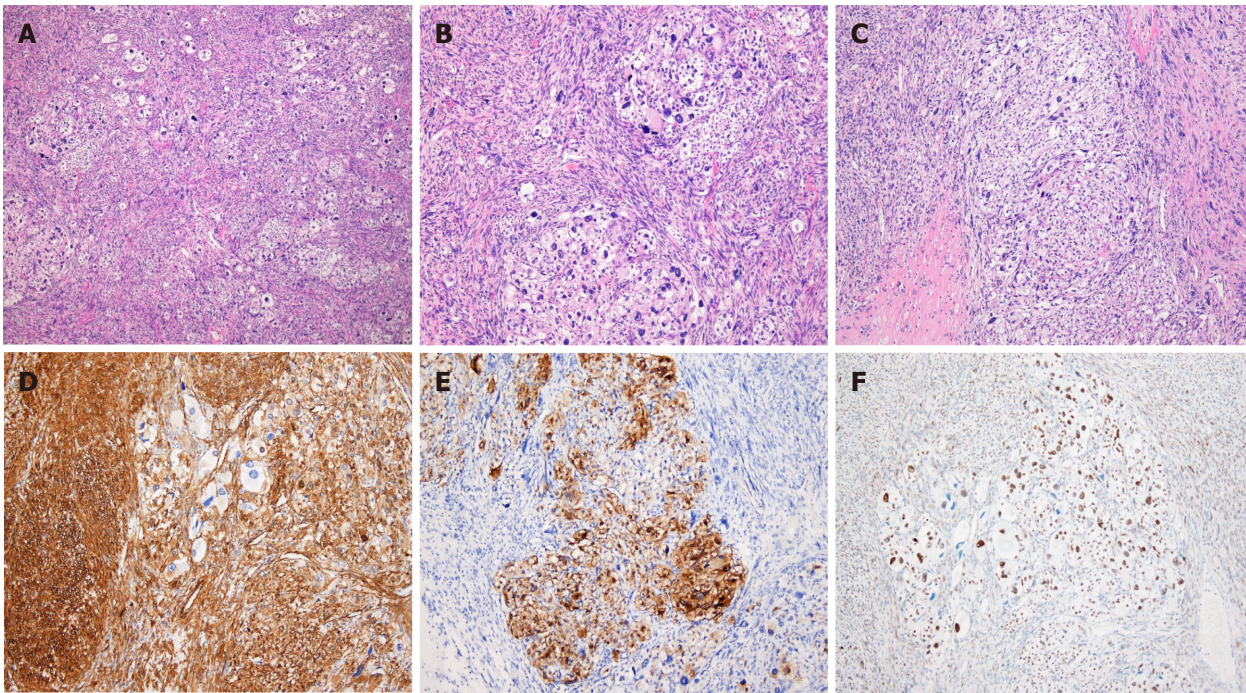
No.	Ref.	Age/sex	Diagnosis	Size (cm)	Nuclear grade	Cellularity	MF / 50 HPF	Invasion	Necrosis	LN status	Morphology	Treatment	Outcome
1	Folpe <i>et al</i> <sup>[5]</sup>	67/F	PEComa with UMP	13	High	Moderate	0	No	No	Uninvolved	Epithelioid	SE only	NED at 84 months
2		97/F	PEComa	4	Intermediate	Moderate	0	No	No	Uninvolved	Epithelioid	SE only	NED at 38 months
3		80/F	Malignant PEComa	9.5	High	High	> 50	Vascular invasion	Yes	Uninvolved	Epithelioid and spindle	SE only	NED at 19 months
4		46/F	Malignant PEComa	12	Intermediate	Moderate	5	Vascular invasion	Yes	Uninvolved	Epithelioid	SE+CT	Recur and liver metastases at 22 months; die at 27 months
5	Gross <i>et al</i> <sup>[6]</sup>	5.5/M	Malignant PEComa	5	High	Moderate	NA	Surrounding tissue invasion	No	Uninvolved	Spindle	SE only	NED at 24 months
6	Lai <i>et al</i> <sup>[7]</sup>	59/M	Malignant PEComa	11	High	High	3	Vascular invasion	Yes	Uninvolved	Epithelioid and spindle	SE+CT	Recur at 6 months; alive
7	Fu <i>et al</i> <sup>[8]</sup>	38/F	Malignant PEComa	10	Intermediate	Moderate	2	Surrounding tissue invasion	Yes	Involved		SE+CT	NED at 6 months
8	Shi <i>et al</i> <sup>[9]</sup>	48/F	Malignant PEComa	14	High	High	Elevated	No	Yes	Uninvolved	Epithelioid	SE+CT	NED at 60 months
9	Wejman <i>et al</i> <sup>[10]</sup>	67/F	PEComa	3.5	Mild	Moderate	1-2	No	No	Uninvolved	Epithelioid and spindle	SE+CT	NA
10	Present case	50/F	Malignant PEComa	8	High	High	40	Surrounding tissue invasion	Yes	Uninvolved	Epithelioid and spindle	SE+CT	NED at 6 months

MF: Mitotic figure; HPF: High power field; LN: Lymph node; M: Male; F: Female; PEComa: Perivascular epithelioid cell tumor; UMP: Unknown malignant potential; SE: Surgical excision; NED: No evidence of disease; CT: Chemotherapy; NA: Not available.

can include leiomyosarcoma, clear cell sarcoma of the soft tissue, alveolar soft part sarcoma (ASPS), malignant melanoma, gastrointestinal stromal tumor, and dedifferentiated liposarcoma.

Leiomyosarcomas should be considered according to the location and histological features of the tumor. PEComas and leiomyosarcomas are morphologically similar as they are both composed of spindle and/or epithelioid cells displaying varying degrees of atypia with positive reactivity for smooth muscle markers. However, leiomyosarcomas are consistently negative for melanocytic markers<sup>[18,19]</sup>.

Clear cell sarcoma of the soft tissue and malignant melanoma may also exhibit similar histological features to PEComa, along with positive immunohistochemical staining of melanocytic markers<sup>[20]</sup>. However, clear cell sarcomas of the soft tissue display cellular nests separated by a fibrocollagenous network and strong S100



**Figure 3 Histopathologic and immunohistochemical findings.** A: The tumor was composed of sheets of epithelioid cells and bundles of spindle cells, hematoxylin and eosin (H&E),  $\times 40$ ; B and C: Mixed epithelioid and spindle cells exhibiting striking pleomorphism and necrosis (H&E,  $\times 100$ ); D: Spindle cells were positive for smooth muscle actin ( $\times 100$ ); E: Epithelioid cells were positive for HMB-45 ( $\times 100$ ); F: Epithelioid cells showed nuclear positivity of TFE3 ( $\times 100$ ).

expression, whereas PEComas typically show a delicate vascular rich stroma and do not express S100. ASPS is a rare malignant soft tissue neoplasm with a strong predilection to develop in young adults and adolescents. The tumor shares both histological and immunohistochemical features with PEComa. ASPS is composed of large epithelioid cells with abundant cytoplasm, arranged in nests or sheets that are separated by a delicate vascular network of capillaries<sup>[21]</sup>. However, ASPS can be differentiated from PEComa by immunohistochemical staining based on negative staining for melanocytic markers, which aids in differentiating from PEComa<sup>[20]</sup>. The differential diagnosis of PEComa from gastrointestinal stromal tumors and dedifferentiated liposarcomas is based on the absence of CD117, DOG-1, MDM2, and CDK4 expression.

The tumor in the present case showed positive immunoreactivity for melanocytic and myogenic markers and was negative for S100, Desmin, CD34, CD117, MDM2, and PAX-8. Further investigation of *TFE3* immunoreactivity and its nuclear expression led to the ultimate diagnosis of malignant PEComa of the mesentery.

*TFE3* is a member of the microphthalmia-associated transcription factor family, and its expression is upregulated in ASPS and translocation-associated renal cell carcinomas<sup>[22]</sup>. Since Folpe *et al*<sup>[5]</sup> first described *TFE3* expression in PEComa, molecular analyses have identified a subgroup of PEComas with *TFE3* gene rearrangement, suggesting that PEComas harboring *TFE3* fusions may represent a distinct disease<sup>[12,23-28]</sup>.

The majority of PEComas are composed of epithelioid and spindle cells, exhibiting positive myogenic expression and the presence of spindle cell components. In addition, PEComas are typically associated with tuberous sclerosis, whereas the subset of PEComas with *TFE3* translocation have different histological features, exhibiting a predominantly epithelioid nested or alveolar architecture without spindle cell components, and immunohistochemistry reveals a lack of myogenic markers<sup>[29,30]</sup>. Compared with the conventional type, *TFE3*-translocated PEComas typically have been reported in younger patients without a history of tuberous sclerosis complex<sup>[12,31-33]</sup>. However, Williamson *et al*<sup>[32]</sup> reported a *TFE3*-rearranged PEComa showing both an epithelioid and spindle morphology with expression of smooth muscle actin, which are consistent with the findings of the present case.

PEComa is a neoplasm of uncertain malignant potential. Although the majority of PEComas show a benign course, some are potentially malignant. However, there are no established criteria or markers to predict the clinical behavior of the tumor. Folpe *et al*<sup>[5]</sup>, as well as Bleeker *et al*<sup>[34]</sup>, proposed criteria for the classification of PEComas



with worrisome features, including a tumor size > 5 cm, infiltrative growth pattern, high nuclear grade, cellularity, necrosis, vascular invasion, and a mitotic rate > 1/50 high-power fields. The tumor in the present study was 7 cm in size, had extensive coagulative necrosis, and showed a mitotic rate of 40/10 high-power fields. Therefore, the tumor met the aforementioned criteria for high risk of malignancy. Furthermore, the tumor involved the rectal serosa but no lymph node metastasis was observed. Therefore, a diagnosis of malignant PEComa was made based on the histopathological and immunohistochemical features.

Since PEComa is a very rare neoplasm, there are currently no effective therapies or management strategies. Surgical resection is the most common approach for curative treatment, and adjuvant chemotherapy is recommended for patients with tumors exhibiting malignant features. This unusual case of malignant PEComa of the mesentery further expands this field to help inform the diagnosis and treatment of this rare entity.

## CONCLUSION

PEComas are rare mesenchymal neoplasms and should be thoroughly distinguished from their morphological mimics. Analysis of histopathological features and immunohistochemistry are essential for a differential diagnosis. The present case further emphasizes the importance of differential diagnosis based on the correct use of immunohistochemistry along with close surveillance of this unique tumor entity. Further studies are required to gain insight into the pathogenesis of PEComa and its clinical behavior.

## ACKNOWLEDGEMENTS

We are grateful to the patient for allowing us to use her medical records in our case report.

## REFERENCES

- 1 Bonetti F, Pea M, Martignoni G, Zamboni G. PEC and sugar. *Am J Surg Pathol* 1992; **16**: 307-308 [PMID: 1599021 DOI: 10.1097/0000478-199203000-00013]
- 2 Bonetti F, Pea M, Martignoni G, Doglioni C, Zamboni G, Capelli P, Rimondi P, Andron A. Clear cell ("sugar") tumor of the lung is a lesion strictly related to angiomylipoma--the concept of a family of lesions characterized by the presence of the perivascular epithelioid cells (PEC). *Pathology* 1994; **26**: 230-236 [PMID: 7991275 DOI: 10.1080/00313029400169561]
- 3 Zamboni G, Pea M, Martignoni G, Zancanaro C, Faccioli G, Gilioli E, Pederzoli P, Bonetti F. Clear cell "sugar" tumor of the pancreas. A novel member of the family of lesions characterized by the presence of perivascular epithelioid cells. *Am J Surg Pathol* 1996; **20**: 722-730 [PMID: 8651352 DOI: 10.1097/0000478-199606000-00010]
- 4 Fletcher CDM, Unni KK, Mertens F. World Health Organization Classification of Tumors: Pathology and Genetics of Tumors of Soft Tissue and Bone. 3<sup>rd</sup> ed. Lyon: IARC Press, 2002: 221-222
- 5 Folpe AL, Mentzel T, Lehr HA, Fisher C, Balzer BL, Weiss SW. Perivascular epithelioid cell neoplasms of soft tissue and gynecologic origin: a clinicopathologic study of 26 cases and review of the literature. *Am J Surg Pathol* 2005; **29**: 1558-1575 [PMID: 16327428 DOI: 10.1097/01.pas.0000173232.22117.37]
- 6 Gross E, Vernea F, Weintraub M, Koplewitz BZ. Perivascular epithelioid cell tumor of the ascending colon mesentery in a child: case report and review of the literature. *J Pediatr Surg* 2010; **45**: 830-833 [PMID: 20385296 DOI: 10.1016/j.jpedsurg.2010.01.015]
- 7 Lai CL, Hsu KF, Yu JC, Chen CJ, Hsieh CB, Chan DC, Li HS, Hsu HM. Malignant perivascular epithelioid cell tumor of the mesentery: a case report and literature review. *Onkologie* 2012; **35**: 114-117 [PMID: 22414975 DOI: 10.1159/000336826]
- 8 Fu X, Jiang JH, Gu X, Li Z. Malignant perivascular epithelioid cell tumor of mesentery with lymph node involvement: a case report and review of literature. *Diagn Pathol* 2013; **8**: 60 [PMID: 23587410 DOI: 10.1186/1746-1596-8-60]
- 9 Shi Y, Geng J, Xie H, Wang B. Malignant perivascular epithelioid cell tumor arising in the mesentery: A case report. *Oncol Lett* 2015; **9**: 2189-2192 [PMID: 26137038 DOI: 10.3892/ol.2015.3037]
- 10 Wejman J, Nowak K, Gielniewska L, Komorowska M, Dąbrowski W. PEComa of the mesentery coexisting with colon cancer: a case report. *Diagn Pathol* 2015; **10**: 31 [PMID: 25896860 DOI: 10.1186/s13000-015-0265-5]
- 11 Thway K, Fisher C. PEComa: morphology and genetics of a complex tumor family. *Ann Diagn Pathol* 2015; **19**: 359-368 [PMID: 26144278 DOI: 10.1016/j.anndiagpath.2015.06.003]
- 12 Argani P, Aulmann S, Illei PB, Netto GJ, Ro J, Cho HY, Dogan S, Ladanyi M, Martignoni G, Goldblum JR, Weiss SW. A distinctive subset of PEComas harbors TFE3 gene fusions. *Am J Surg Pathol* 2010; **34**: 1395-

- 1406 [PMID: [20871214](#) DOI: [10.1097/PAS.0b013e3181f17ac0](#)]
- 13 **Tazelaar HD**, Batts KP, Srigley JR. Primary extrapulmonary sugar tumor (PEST): a report of four cases. *Mod Pathol* 2001; **14**: 615-622 [PMID: [11406665](#) DOI: [10.1038/modpathol.3880360](#)]
- 14 **Hornick JL**, Fletcher CD. PEComa: what do we know so far? *Histopathology* 2006; **48**: 75-82 [PMID: [16359539](#) DOI: [10.1111/j.1365-2559.2005.02316.x](#)]
- 15 **Doyle LA**, Hornick JL, Fletcher CD. PEComa of the gastrointestinal tract: clinicopathologic study of 35 cases with evaluation of prognostic parameters. *Am J Surg Pathol* 2013; **37**: 1769-1782 [PMID: [24061520](#) DOI: [10.1097/PAS.0b013e31829caab3](#)]
- 16 **Xu J**, Yan Y, Xiang X, Jiang P, Hu X, Yang W. Gastric Perivascular Epithelioid Cell Tumor (PEComa). *Am J Clin Pathol* 2019; **152**: 221-229 [PMID: [31141597](#) DOI: [10.1093/ajcp/aqz040](#)]
- 17 **Shi HY**, Wei LX, Sun L, Guo AT. Clinicopathologic analysis of 4 perivascular epithelioid cell tumors (PEComas) of the gastrointestinal tract. *Int J Surg Pathol* 2010; **18**: 243-247 [PMID: [19124450](#) DOI: [10.1177/1066896908330481](#)]
- 18 **Miettinen M**. Smooth muscle tumors of soft tissue and non-uterine viscera: biology and prognosis. *Mod Pathol* 2014; **27** Suppl 1: S17-S29 [PMID: [24384850](#) DOI: [10.1038/modpathol.2013.178](#)]
- 19 **George S**, Serrano C, Hensley ML, Ray-Coquard I. Soft Tissue and Uterine Leiomyosarcoma. *J Clin Oncol* 2018; **36**: 144-150 [PMID: [29220301](#) DOI: [10.1200/JCO.2017.75.9845](#)]
- 20 **James AW**, Dry SM. Diagnostically Challenging Epithelioid Soft Tissue Tumors. *Surg Pathol Clin* 2015; **8**: 309-329 [PMID: [26297059](#) DOI: [10.1016/j.path.2015.05.002](#)]
- 21 **Jaber OI**, Kirby PA. Alveolar Soft Part Sarcoma. *Arch Pathol Lab Med* 2015; **139**: 1459-1462 [PMID: [26516944](#) DOI: [10.5858/arpa.2014-0385-RS](#)]
- 22 **Kenerson H**, Folpe AL, Takayama TK, Yeung RS. Activation of the mTOR pathway in sporadic angiomyolipomas and other perivascular epithelioid cell neoplasms. *Hum Pathol* 2007; **38**: 1361-1371 [PMID: [17521703](#) DOI: [10.1016/j.humpath.2007.01.028](#)]
- 23 **Kuiper RP**, Schepens M, Thijssen J, Schoenmakers EF, van Kessel AG. Regulation of the MiTF/TFE bHLH-LZ transcription factors through restricted spatial expression and alternative splicing of functional domains. *Nucleic Acids Res* 2004; **32**: 2315-2322 [PMID: [15118077](#) DOI: [10.1093/nar/gkh571](#)]
- 24 **Agaram NP**, Sung YS, Zhang L, Chen CL, Chen HW, Singer S, Dickson MA, Berger MF, Antonescu CR. Dichotomy of Genetic Abnormalities in PEComas With Therapeutic Implications. *Am J Surg Pathol* 2015; **39**: 813-825 [PMID: [25651471](#) DOI: [10.1097/PAS.0000000000000389](#)]
- 25 **Schoolmeester JK**, Dao LN, Sukov WR, Wang L, Park KJ, Murali R, Hameed MR, Soslow RA. TFE3 translocation-associated perivascular epithelioid cell neoplasm (PEComa) of the gynecologic tract: morphology, immunophenotype, differential diagnosis. *Am J Surg Pathol* 2015; **39**: 394-404 [PMID: [25517951](#) DOI: [10.1097/PAS.0000000000000349](#)]
- 26 **Shen Q**, Rao Q, Xia QY, Yu B, Shi QL, Zhang RS, Zhou XJ. Perivascular epithelioid cell tumor (PEComa) with TFE3 gene rearrangement: clinicopathological, immunohistochemical, and molecular features. *Virchows Arch* 2014; **465**: 607-613 [PMID: [25239799](#) DOI: [10.1007/s00428-014-1655-x](#)]
- 27 **Cho HY**, Chung DH, Khurana H, Zhai QJ, Ro JY. The role of TFE3 in PEComa. *Histopathology* 2008; **53**: 236-249 [PMID: [18510571](#) DOI: [10.1111/j.1365-2559.2008.03057.x](#)]
- 28 **Malinowska I**, Kwiatkowski DJ, Weiss S, Martignoni G, Netto G, Argani P. Perivascular epithelioid cell tumors (PEComas) harboring TFE3 gene rearrangements lack the TSC2 alterations characteristic of conventional PEComas: further evidence for a biological distinction. *Am J Surg Pathol* 2012; **36**: 783-784 [PMID: [22456611](#) DOI: [10.1097/PAS.0b013e31824a8a37](#)]
- 29 **Dickson BC**, Brooks JS, Pasha TL, Zhang PJ. TFE3 expression in tumors of the microphthalmia-associated transcription factor (MiTF) family. *Int J Surg Pathol* 2011; **19**: 26-30 [PMID: [20164056](#) DOI: [10.1177/1066896909352861](#)]
- 30 **Righi A**, Dimosthenous K, Rosai J. PEComa: another member of the MiT tumor family? *Int J Surg Pathol* 2008; **16**: 16-20 [PMID: [18203778](#) DOI: [10.1177/1066896907309733](#)]
- 31 **Wang XT**, Xia QY, Ni H, Wang ZY, Ye SB, Li R, Wang X, Lv JH, Shi SS, Ma HH, Lu ZF, Shen Q, Zhou XJ, Rao Q. Xp11 neoplasm with melanocytic differentiation of the prostate harbouring the novel NONO-TFE3 gene fusion: report of a unique case expanding the gene fusion spectrum. *Histopathology* 2016; **69**: 450-458 [PMID: [26844676](#) DOI: [10.1111/his.12949](#)]
- 32 **Williamson SR**, Bunde PJ, Montironi R, Lopez-Beltran A, Zhang S, Wang M, MacLennan GT, Cheng L. Malignant perivascular epithelioid cell neoplasm (PEComa) of the urinary bladder with TFE3 gene rearrangement: clinicopathologic, immunohistochemical, and molecular features. *Am J Surg Pathol* 2013; **37**: 1619-1626 [PMID: [23797724](#) DOI: [10.1097/PAS.0b013e318293729d](#)]
- 33 **Chen XF**, Yeong J, Chang KTE, Lim AST, Kuick CH, Lim TH, Sudhanshi J, Selvarajan S, Gan VHL, Khor LY. TFE3-Expressing Epithelioid Rich Perivascular Epithelioid Cell Neoplasm (PEComa) of the Bladder with Unusual Benign Course. *Ann Clin Lab Sci* 2018; **48**: 110-115 [PMID: [29531006](#)]
- 34 **Bleeker JS**, Quevedo JF, Folpe AL. "Malignant" perivascular epithelioid cell neoplasm: risk stratification and treatment strategies. *Sarcoma* 2012; **2012**: 541626 [PMID: [22619565](#) DOI: [10.1155/2012/541626](#)]



Published by **Baishideng Publishing Group Inc**  
7041 Koll Center Parkway, Suite 160, Pleasanton, CA 94566, USA

**Telephone:** +1-925-3991568

**E-mail:** [bpgoffice@wjgnet.com](mailto:bpgoffice@wjgnet.com)

**Help Desk:** <https://www.f6publishing.com/helpdesk>

<https://www.wjgnet.com>

