

World Journal of *Clinical Cases*

World J Clin Cases 2020 October 6; 8(19): 4280-4687



Contents

Semimonthly Volume 8 Number 19 October 6, 2020

OPINION REVIEW

- 4280 Role of monoclonal antibody drugs in the treatment of COVID-19
Ucciferri C, Vecchiet J, Falasca K

MINIREVIEWS

- 4286 Review of simulation model for education of point-of-care ultrasound using easy-to-make tools
Shin KC, Ha YR, Lee SJ, Ahn JH
- 4303 Liver injury in COVID-19: A minireview
Zhao JN, Fan Y, Wu SD

ORIGINAL ARTICLE

Case Control Study

- 4311 Transanal minimally invasive surgery *vs* endoscopic mucosal resection for rectal benign tumors and rectal carcinoids: A retrospective analysis
Shen JM, Zhao JY, Ye T, Gong LF, Wang HP, Chen WJ, Cai YK
- 4320 Impact of *mTOR* gene polymorphisms and gene-tea interaction on susceptibility to tuberculosis
Wang M, Ma SJ, Wu XY, Zhang X, Abesig J, Xiao ZH, Huang X, Yan HP, Wang J, Chen MS, Tan HZ

Retrospective Cohort Study

- 4331 Establishment and validation of a nomogram to predict the risk of ovarian metastasis in gastric cancer: Based on a large cohort
Li SQ, Zhang KC, Li JY, Liang WQ, Gao YH, Qiao Z, Xi HQ, Chen L

Retrospective Study

- 4342 Predictive factors for early clinical response in community-onset *Escherichia coli* urinary tract infection and effects of initial antibiotic treatment on early clinical response
Kim YJ, Lee JM, Lee JH
- 4349 Managing acute appendicitis during the COVID-19 pandemic in Jiaying, China
Zhou Y, Cen LS
- 4360 Clinical application of combined detection of SARS-CoV-2-specific antibody and nucleic acid
Meng QB, Peng JJ, Wei X, Yang JY, Li PC, Qu ZW, Xiong YF, Wu GJ, Hu ZM, Yu JC, Su W
- 4370 Prolonged prothrombin time at admission predicts poor clinical outcome in COVID-19 patients
Wang L, He WB, Yu XM, Hu DL, Jiang H

- 4380** Percutaneous radiofrequency ablation is superior to hepatic resection in patients with small hepatocellular carcinoma

Zhang YH, Su B, Sun P, Li RM, Peng XC, Cai J

- 4388** Clinical study on the surgical treatment of atypical Lisfranc joint complex injury

Li X, Jia LS, Li A, Xie X, Cui J, Li GL

- 4400** Application of medial column classification in treatment of intra-articular calcaneal fractures

Zheng G, Xia F, Yang S, Cui J

Clinical Trials Study

- 4410** Optimal hang time of enteral formula at standard room temperature and high temperature

Lakananurak N, Nalinthassanai N, Suansawang W, Panarat P

META-ANALYSIS

- 4416** Meta-analysis reveals an association between acute pancreatitis and the risk of pancreatic cancer

Liu J, Wang Y, Yu Y

SCIENTOMETRICS

- 4431** Global analysis of daily new COVID-19 cases reveals many static-phase countries including the United States potentially with unstoppable epidemic

Long C, Fu XM, Fu ZF

CASE REPORT

- 4443** Left atrial appendage aneurysm: A case report

Belov DV, Moskalev VI, Garbuzenko DV, Arefyev NO

- 4450** Twenty-year survival after iterative surgery for metastatic renal cell carcinoma: A case report and review of literature

De Raffe E, Mirarchi M, Casadei R, Ricci C, Brunocilla E, Minni F

- 4466** Primary rhabdomyosarcoma: An extremely rare and aggressive variant of male breast cancer

Satală CB, Jung I, Bara TJ, Simu P, Simu I, Vlad M, Szodorai R, Gurzu S

- 4475** Bladder stones in a closed diverticulum caused by *Schistosoma mansoni*: A case report

Alkhamees MA

- 4481** Cutaneous ciliated cyst on the anterior neck in young women: A case report

Kim YH, Lee J

- 4488** Extremely rare case of successful treatment of metastatic ovarian undifferentiated carcinoma with high-dose combination cytotoxic chemotherapy: A case report

Kim HB, Lee HJ, Hong R, Park SG

- 4494** Acute amnesia during pregnancy due to bilateral fornix infarction: A case report
Cho MJ, Shin DI, Han MK, Yum KS
- 4499** Ascaris-mimicking common bile duct stone: A case report
Choi SY, Jo HE, Lee YN, Lee JE, Lee MH, Lim S, Yi BH
- 4505** Eight-year follow-up of locally advanced lymphoepithelioma-like carcinoma at upper urinary tract: A case report
Yang CH, Weng WC, Lin YS, Huang LH, Lu CH, Hsu CY, Ou YC, Tung MC
- 4512** Spontaneous resolution of idiopathic intestinal obstruction after pneumonia: A case report
Zhang BQ, Dai XY, Ye QY, Chang L, Wang ZW, Li XQ, Li YN
- 4521** Successful pregnancy after protective hemodialysis for chronic kidney disease: A case report
Wang ML, He YD, Yang HX, Chen Q
- 4527** Rapid remission of refractory synovitis, acne, pustulosis, hyperostosis, and osteitis syndrome in response to the Janus kinase inhibitor tofacitinib: A case report
Li B, Li GW, Xue L, Chen YY
- 4535** Percutaneous fixation of neonatal humeral physeal fracture: A case report and review of the literature
Tan W, Wang FH, Yao JH, Wu WP, Li YB, Ji YL, Qian YP
- 4544** Severe fundus lesions induced by ocular jellyfish stings: A case report
Zheng XY, Cheng DJ, Lian LH, Zhang RT, Yu XY
- 4550** Application of ozonated water for treatment of gastro-thoracic fistula after comprehensive esophageal squamous cell carcinoma therapy: A case report
Wu DD, Hao KN, Chen XJ, Li XM, He XF
- 4558** Germinomas of the basal ganglia and thalamus: Four case reports
Huang ZC, Dong Q, Song EP, Chen ZJ, Zhang JH, Hou B, Lu ZQ, Qin F
- 4565** Gastrointestinal bleeding caused by jejunal angiosarcoma: A case report
Hui YY, Zhu LP, Yang B, Zhang ZY, Zhang YJ, Chen X, Wang BM
- 4572** High expression of squamous cell carcinoma antigen in poorly differentiated adenocarcinoma of the stomach: A case report
Wang L, Huang L, Xi L, Zhang SC, Zhang JX
- 4579** Therapy-related acute promyelocytic leukemia with FMS-like tyrosine kinase 3-internal tandem duplication mutation in solitary bone plasmacytoma: A case report
Hong LL, Sheng XF, Zhuang HF
- 4588** Metastasis of esophageal squamous cell carcinoma to the thyroid gland with widespread nodal involvement: A case report
Zhang X, Gu X, Li JG, Hu XJ

- 4595** Severe hyperlipemia-induced pseudoerythrocytosis - Implication for misdiagnosis and blood transfusion: A case report and literature review
Zhao XC, Ju B, Wei N, Ding J, Meng FJ, Zhao HG
- 4603** Novel brachytherapy drainage tube loaded with double 125I strands for hilar cholangiocarcinoma: A case report
Lei QY, Jiao DC, Han XW
- 4609** Resorption of upwardly displaced lumbar disk herniation after nonsurgical treatment: A case report
Wang Y, Liao SC, Dai GG, Jiang L
- 4615** Primary hepatic myelolipoma: A case report and review of the literature
Li KY, Wei AL, Li A
- 4624** Endoscopic palliative resection of a giant 26-cm esophageal tumor: A case report
Li Y, Guo LJ, Ma YC, Ye LS, Hu B
- 4633** Solitary hepatic lymphangioma mimicking liver malignancy: A case report and literature review
Long X, Zhang L, Cheng Q, Chen Q, Chen XP
- 4644** Intraosseous venous malformation of the maxilla after enucleation of a hemophilic pseudotumor: A case report
Cai X, Yu JJ, Tian H, Shan ZF, Liu XY, Jia J
- 4652** Intravesically instilled gemcitabine-induced lung injury in a patient with invasive urothelial carcinoma: A case report
Zhou XM, Wu C, Gu X
- 4660** Bochdalek hernia masquerading as severe acute pancreatitis during the third trimester of pregnancy: A case report
Zou YZ, Yang JP, Zhou XJ, Li K, Li XM, Song CH
- 4667** Localized primary gastric amyloidosis: Three case reports
Liu XM, Di LJ, Zhu JX, Wu XL, Li HP, Wu HC, Tuo BG
- 4676** Displacement of peritoneal end of a shunt tube to pleural cavity: A case report
Liu J, Guo M
- 4681** Parathyroid adenoma combined with a rib tumor as the primary disease: A case report
Han L, Zhu XF

ABOUT COVER

Peer-reviewer of *World Journal of Clinical Cases*, Prof. Adrián Ángel Inchauspe, obtained his MD in 1986 from La Plata National University (Argentina), where he remained as Professor of Surgery. Study abroad, at the Aachen and Tübingen Universities in Germany in 1991, led to his certification in laparoscopic surgery, and at the Louis Pasteur University in Strasbourg France, led to his being awarded the Argentine National Invention Award in 1998 for his graduate work in tele-surgery. He currently serves as teacher in the Argentine Acupuncture Society, as Invited Foreigner Professor at the China National Academy of Sciences and Hainan Medical University, and as editorial member and reviewer for many internationally renowned journals. (L-Editor: Filipodia)

AIMS AND SCOPE

The primary aim of *World Journal of Clinical Cases* (*WJCC*, *World J Clin Cases*) is to provide scholars and readers from various fields of clinical medicine with a platform to publish high-quality clinical research articles and communicate their research findings online.

WJCC mainly publishes articles reporting research results and findings obtained in the field of clinical medicine and covering a wide range of topics, including case control studies, retrospective cohort studies, retrospective studies, clinical trials studies, observational studies, prospective studies, randomized controlled trials, randomized clinical trials, systematic reviews, meta-analysis, and case reports.

INDEXING/ABSTRACTING

The *WJCC* is now indexed in Science Citation Index Expanded (also known as SciSearch®), Journal Citation Reports/Science Edition, PubMed, and PubMed Central. The 2020 Edition of Journal Citation Reports® cites the 2019 impact factor (IF) for *WJCC* as 1.013; IF without journal self cites: 0.991; Ranking: 120 among 165 journals in medicine, general and internal; and Quartile category: Q3.

RESPONSIBLE EDITORS FOR THIS ISSUE

Production Editor: Yan-Xia Xing; Production Department Director: Yun-Xiaojuan Wu; Editorial Office Director: Jin-Lai Wang.

NAME OF JOURNAL

World Journal of Clinical Cases

ISSN

ISSN 2307-8960 (online)

LAUNCH DATE

April 16, 2013

FREQUENCY

Semimonthly

EDITORS-IN-CHIEF

Dennis A Bloomfield, Sandro Vento, Bao-Gan Peng

EDITORIAL BOARD MEMBERS

<https://www.wjgnet.com/2307-8960/editorialboard.htm>

PUBLICATION DATE

October 6, 2020

COPYRIGHT

© 2020 Baishideng Publishing Group Inc

INSTRUCTIONS TO AUTHORS

<https://www.wjgnet.com/bpg/gerinfo/204>

GUIDELINES FOR ETHICS DOCUMENTS

<https://www.wjgnet.com/bpg/GerInfo/287>

GUIDELINES FOR NON-NATIVE SPEAKERS OF ENGLISH

<https://www.wjgnet.com/bpg/gerinfo/240>

PUBLICATION ETHICS

<https://www.wjgnet.com/bpg/GerInfo/288>

PUBLICATION MISCONDUCT

<https://www.wjgnet.com/bpg/gerinfo/208>

ARTICLE PROCESSING CHARGE

<https://www.wjgnet.com/bpg/gerinfo/242>

STEPS FOR SUBMITTING MANUSCRIPTS

<https://www.wjgnet.com/bpg/GerInfo/239>

ONLINE SUBMISSION

<https://www.f6publishing.com>



Bladder stones in a closed diverticulum caused by *Schistosoma mansoni*: A case report

Mohammad A Alkhamees

ORCID number: Mohammad A Alkhamees 0000-0001-8207-1870.

Author contributions: Alkhamees MA wrote and revised the manuscript.

Informed consent statement:

Written informed consent was obtained from the patient to have his details and accompanying images published, and the local Institutional Review Board approved this study.

Conflict-of-interest statement: The authors have no conflicts of interest to report relative to the preparation or publication of this study.

CARE Checklist (2016) statement:

The author has read the CARE Checklist (2016), and the manuscript was prepared and revised according to the CARE Checklist (2016).

Open-Access: This article is an open-access article that was selected by an in-house editor and fully peer-reviewed by external reviewers. It is distributed in accordance with the Creative Commons Attribution NonCommercial (CC BY-NC 4.0) license, which permits others to distribute, remix, adapt, build upon this work non-commercially, and license their derivative works

Mohammad A Alkhamees, Department of Urology, College of Medicine, Majmaah University, Al-Majmaah 15361, Saudi Arabia

Corresponding author: Mohammad A Alkhamees, MBBS, Assistant Professor, Department of Urology, College of Medicine, Majmaah University, Al-Majmaah 15361, Saudi Arabia. m.alkhamees@mu.edu.sa

Abstract

BACKGROUND

Genitourinary (GU) schistosomiasis is a chronic infection caused by a parasitic trematode, with *Schistosoma haematobium* (*S. haematobium*) being the prevalent species. The disease has a variable prevalence around the world, with a greater burden on, but not limited to Africa, South America, Asia, and the Middle East.

CASE SUMMARY

We report the case of a 30-year-old man who presented with symptoms of bladder stones. During endoscopic cystolitholapaxy, we did not detect any stones in the bladder. Upon careful scanning of the urinary bladder trigone, sandy patches were detected. We performed endoscopic resection, which revealed a closed diverticulum with bladder stones. The diverticular wall was sent for histopathology and revealed features of chronic granulomatous inflammation with numerous embedded *Schistosoma* eggs, with some of the eggs having lateral spines. The patient was treated with praziquantel, and his symptoms completely resolved.

CONCLUSION

GU schistosomiasis is primarily caused by *S. haematobium*. However, *Schistosoma mansoni* mediated GU schistosomiasis is unusual, making this a quite interesting case.

Key Words: Schistosomiasis; *Schistosoma*; Bladder stones; Bladder diverticulum; *Schistosoma mansoni*; Genitourinary; Case report

©The Author(s) 2020. Published by Baishideng Publishing Group Inc. All rights reserved.

Core Tip: Genitourinary (GU) schistosomiasis is a chronic infection caused by the parasitic

on different terms, provided the original work is properly cited and the use is non-commercial. See: <http://creativecommons.org/licenses/by-nc/4.0/>

Manuscript source: Unsolicited manuscript

Received: June 19, 2020

Peer-review started: June 19, 2020

First decision: July 24, 2020

Revised: July 30, 2020

Accepted: September 2, 2020

Article in press: September 2, 2020

Published online: October 6, 2020

P-Reviewer: Ju SQ

S-Editor: Ma YJ

L-Editor: A

P-Editor: Xing YX



trematode, with *Schistosoma haematobium* being the prevalent species. We report a case of a 30-year-old male who presented with GU schistosomiasis due to *Schistosoma mansoni* which is a rare incidence.

Citation: Alkhamees MA. Bladder stones in a closed diverticulum caused by *Schistosoma mansoni*: A case report. *World J Clin Cases* 2020; 8(19): 4475-4480

URL: <https://www.wjgnet.com/2307-8960/full/v8/i19/4475.htm>

DOI: <https://dx.doi.org/10.12998/wjcc.v8.i19.4475>

INTRODUCTION

Genitourinary (GU) schistosomiasis is a chronic infection induced by the parasitic trematode of the genus *Schistosoma*. It has been well described as a cause of urinary disease predominantly in Egyptian papyri^[1]. *Schistosoma haematobium* (*S. haematobium*) is the primary schistosome species causing GU schistosomiasis. It is considered the third most devastating tropical disease in the world, with variable prevalence around the world^[2]. Africa, South America, Asia, and the Middle East are the most frequently affected regions. It has been estimated that over 230 million people are infected with *Schistosoma* spp. Worldwide^[3]. The World Health Organization has reported 200000 deaths per year due to schistosomiasis in sub-Saharan Africa^[4].

The range of diseases caused by schistosomes is highly variable, depending on the organ system involved^[5]. Adult male and female worms live, mate, and produce eggs within the veins of their human host. The eggs that are shed into the external environment infect suitable host snails. Asexual replication occurs within the snails to produce infectious larvae called cercariae. It is the cercariae that penetrate the human skin and enter the body. *S. haematobium* is the most predominant species of GU infection and specifically resides in the perivascular venules^[3]. Its high association with bladder cancer makes it a serious parasite^[5,6]. Urinary schistosomiasis inflammation can be categorized into cellular (Type IV hypersensitivity) or humoral (mainly Type III) immune response, with the humoral response carrying the risk of cancer^[1]. The early phase of the infection is usually inflammatory, along with classical features such as inflammatory granulomata involving the bladder and lower ureters. At this phase, patients usually present with increased episodes of hematuria and dysuria. Microscopic examination of the urine at this stage can diagnose the infection^[1]. The later phase is dominated by parenchymal-mesenchymal transformation, where the granulomata are modulated, fibrosed, or calcified^[1]. Herein, we report the case of a 30-year-old man who had GU schistosomiasis caused by parasitic eggs with a lateral spine (*i.e.*, *S. mansoni*), which is rarely reported in the literature.

CASE PRESENTATION

Chief complaints

A 30-year-old Yemini man presented to the emergency department in our hospital complaining of dysuria with associated lower abdominal and penile pain for months. The patient was consequently referred to our urology department for further evaluation.

History of present illness

The patient's symptoms started 6 mo prior to presentation. He is not known to have any medical condition.

History of past illness

He denied any history of urolithiasis, hematuria, or other lower urinary tract symptoms.

Physical examination

The physical examination results were unremarkable.

Laboratory examinations

Urinalysis was inconclusive and was not suggestive of urinary tract infection (UTI). Laboratory investigations revealed a normal creatinine concentration of 80 µmol/L.

Imaging examinations

An initial renal and bladder ultrasound detected multiple bladder stones. Accordingly, we performed a computed tomography (CT) scan without contrast. The CT scan revealed multiple bladder stones with a burden of 1.5 cm and was otherwise normal (Figure 1).

Following consultation with the patient, we decided to perform an endoscopic cystolitholapaxy. During the procedure, we observed with a cystoscope that the urethra was normal. Although the bladder neck was mildly elevated and hyperemic, no stones or diverticula were detected. Upon inspection of the trigone, we observed a central inter-ureteric bulge with sandy patches over the urothelium. Further careful scanning revealed no evidence of a diverticular neck. Therefore, we decided to perform a minor resection of the inter-ureteric bulge. Using a monopolar resectoscope, a brief resection was performed, and multiple stones were seen within a closed diverticulum. Consequently, complete deroofing was performed. All stones were fragmented and extracted cystoscopically. The diverticular wall was then sent for histopathological examination. The patient tolerated the procedure well and was discharged the following day with no active issues.

FINAL DIAGNOSIS

Histopathological examination revealed features of chronic granulomatous inflammation with scattered multinucleate reactive giant cells around numerous embedded *Schistosoma* eggs. Some of the eggs had lateral spines with sporadic degeneration and calcification. No definite atypia or malignancy was detected (Figures 2 and 3).

TREATMENT

The patient received praziquantel (40 mg/kg) in two divided doses for one day.

OUTCOME AND FOLLOW-UP

At the follow-up visit two weeks later, the patient reported complete relief from his symptoms. A urine sample collected for microscopic examination revealed no evidence of *Schistosoma* eggs. The patient reported no recurrence of symptoms at the two-month follow-up visit. Even though we recommended a PCR test, the patient did not follow up.

DISCUSSION

Schistosomiasis infection is a serious tropical disease with variable prevalence; the majority of cases are reported in developing countries. The type of schistosomiasis is highly dependent on the affected organs. *S. haematobium* usually resides and infects the GU tract, while *S. mansoni*, *S. japonicum*, and *S. mekongi* reside and infect the liver and gastrointestinal tract. It is important to include schistosomiasis in the differential diagnosis when dealing with patients with no urological features but who are from a schistosomiasis endemic region. Common features of GU schistosomiasis include, but are not limited to, hematuria and dysuria^[7]. Our patient had urological symptoms and lived in an endemic area, consistent with the diagnosis of GU schistosomiasis. On physical examination, generalized lymphadenopathy is common, and it is paramount to examine the skin for possible maculopapular rash, which indicates penetration of the cercaria larva. Moreover, approximately one-third of patients will have splenomegaly^[7]. However, we did not observe any such indications upon physical examination of our patient. It should be taken into consideration that schistosomiasis may also mimic metastatic malignancy. A case report which occurred in the United

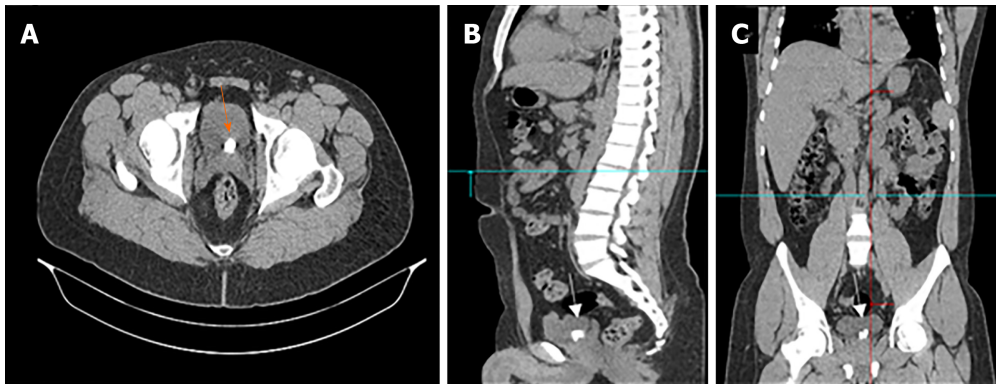


Figure 1 Computed tomography scan images showing two stones at the base of the bladder with a burden of 1.5 cm. Computed tomography images do not reveal that the stones are present within a diverticulum (orange arrow). A: Axial; B: Sagittal; C: Coronal images.

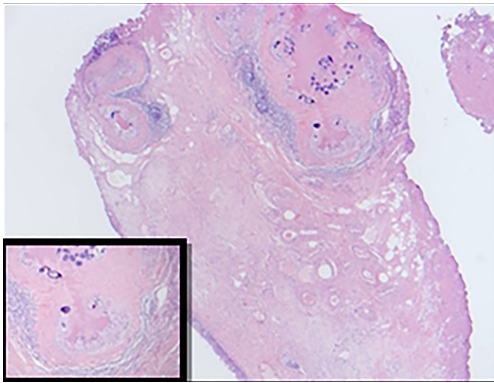


Figure 2 Hematoxylin and eosin staining images of resected diverticulum at 200× magnification. Lamina propria show multiple granulomatous inflammation around calcified ova. Marked fibrosis and chronic inflammation were also observed surrounding the calcified ova.

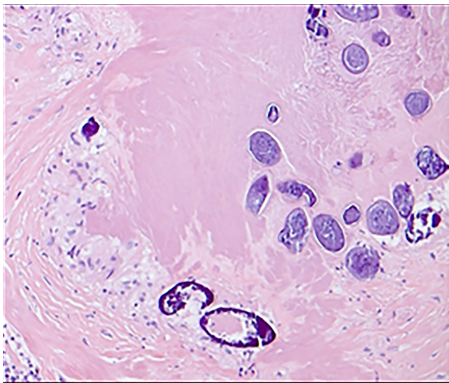


Figure 3 Hematoxylin and eosin staining images of resected diverticulum at 400× magnification. The image shows that the majority of the *Schistosoma* eggs are calcified with some showing lateral spines.

Kingdom describes a patient who was suspected to have bladder cancer with pulmonary metastasis. However, detailed history revealed a visit to an endemic country, and urinary cytology revealed *S. haematobium*. The patient was treated with praziquantel, which resolved lesions in the bladder, lungs, and lymph nodes^[2].

It is important to mention that as schistosomes cannot excrete waste products due to the lack of an anus, they disgorge directly into the bloodstream. Some of these regurgitated wastes are essential for blood-based and urine-based diagnostic purposes^[3]. A systematic review of 90 articles concluded that microhematuria determined by microscopy efficiently identified a large proportion of infections and non-infections^[8]. In addition to urine testing, a complete blood count indicates eosinophilia in over 80% of acutely infected patients^[7]. In recent years, sophisticated

PCR methods such as high-resolution melting curve assays have emerged to diagnose schistosomiasis with high sensitivity and specificity^[9].

The imaging modalities in GU schistosomiasis depend on the location. In the case of the bladder, patchy calcifications producing the picture of “cystitis cystica” may be observed. Another characteristic radiological sign is calcification of the seminal vesicles^[1]. A study that reviewed 153 Egyptian men with GU schistosomiasis concluded that the most common finding by urography is obstructive uropathy associated with significant bladder calcification, ureteral stenosis, and ureterolithiasis^[10]. The presence of “sandy patches” is another common and classical observation by cystoscopy. These are areas of roughened bladder mucosa surrounding the egg deposits that were evident in our patient^[7].

A definitive diagnosis of schistosomiasis requires histopathology, which reveals the characteristic *S. haematobium* eggs with their terminal spines and granulomas. The current understanding is that *S. haematobium* is the cause of GU schistosomiasis, while other *Schistosoma* species cause intestinal schistosomiasis^[1,9,11,12]. However, our patient showed the presence of eggs with a lateral spine with GU schistosomiasis, which could indicate the possibility of an infection with another *Schistosoma* species. A case report that occurred in Turkey describes an old man from a *S. mansoni* non-endemic area who developed transitional cell carcinoma of the bladder secondary to *S. mansoni* infection. Although the association between *S. Haematobium* and bladder cancer is well-established, the association between *S. mansoni* and bladder cancer is uncertain due to the lack of sufficient evidence in the literature^[13]. Moreover, a study in Cameroon, which included 1118 children, revealed that 162 (14.5%) children had *S. mansoni* eggs in the urine, and 33 (3%) children had *S. haematobium* eggs in the feces^[14].

Nephropathy and renal failure are also complications associated with GU schistosomiasis. Nephrotic syndrome is caused by immune complex deposition in the glomerular capillaries and basement membrane in response to *S. haematobium*^[15]. Immunofluorescent studies of these immune complexes have detected IgM, IgG, IgE, and occasionally IgA deposits^[16]. A systematic review of urological complications of GU schistosomiasis surmised that there was no difference in urinary stone incidence between patients with or without GU schistosomiasis^[15]. However, the authors of another study hypothesized that infective stone formation is higher among GU schistosomiasis patients^[1].

CONCLUSION

Although the first report relied on systematic evidence, the second assumption is more consistent with our patient who developed multiple bladder stones. Administration of praziquantel (40 mg/kg) for such cases is the most standard evidence-based regimen^[17]. Despite the patient reporting complete symptom resolution, we could not confirm absolute elimination of the parasite by PCR as he did not maintain follow-up visits.

ACKNOWLEDGEMENTS

The author would like to thank the Deanship of Scientific Research at Majmaah University for supporting this work under Project Number No. R-1441-149.

REFERENCES

- 1 Barsoum RS. Urinary schistosomiasis: review. *J Adv Res* 2013; 4: 453-459 [PMID: 25685452 DOI: 10.1016/j.jare.2012.08.004]
- 2 Hosny K, Luk A. Urinary schistosomiasis presented as bladder malignancy with pulmonary metastases: a case report. *Ann R Coll Surg Engl* 2018; 100: e145-e146 [PMID: 29962297 DOI: 10.1308/rcsann.2018.0072]
- 3 Colley DG, Bustinduy AL, Secor WE, King CH. Human schistosomiasis. *Lancet* 2014; 383: 2253-2264 [PMID: 24698483 DOI: 10.1016/S0140-6736(13)61949-2]
- 4 WHO Expert Committee. Prevention and control of schistosomiasis and soil-transmitted helminthiasis. *World Health Organ Tech Rep Ser* 2002; 912: i-vi, 1-57, back cover [PMID: 12592987]
- 5 Mostafa MH, Sheweita SA, O'Connor PJ. Relationship between schistosomiasis and bladder cancer. *Clin Microbiol Rev* 1999; 12: 97-111 [PMID: 9880476]
- 6 Rambau PF, Chalya PL, Jackson K. Schistosomiasis and urinary bladder cancer in North Western Tanzania: a retrospective review of 185 patients. *Infect Agent Cancer* 2013; 8: 19 [PMID: 23705833 DOI: 10.1186/1750-9378-8-19]

- 7 **Gray DJ**, Ross AG, Li YS, McManus DP. Diagnosis and management of schistosomiasis. *BMJ* 2011; **342**: d2651 [PMID: 21586478 DOI: 10.1136/bmj.d2651]
- 8 **Ochodo EA**, Gopalakrishna G, Spek B, Reitsma JB, van Lieshout L, Polman K, Lamberton P, Bossuyt PM, Leeftang MM. Circulating antigen tests and urine reagent strips for diagnosis of active schistosomiasis in endemic areas. *Cochrane Database Syst Rev* 2015; CD009579 [PMID: 25758180 DOI: 10.1002/14651858.CD009579.pub2]
- 9 **Sady H**, Al-Mekhlafi HM, Ngui R, Atroosh WM, Al-Delaimy AK, Nasr NA, Dawaki S, Abdulsalam AM, Ithoi I, Lim YA, Chua KH, Surin J. Detection of *Schistosoma mansoni* and *Schistosoma haematobium* by Real-Time PCR with High Resolution Melting Analysis. *Int J Mol Sci* 2015; **16**: 16085-16103 [PMID: 26193254 DOI: 10.3390/ijms160716085]
- 10 **Young SW**, Khalid KH, Farid Z, Mahmoud AH. Urinary-tract lesions of *Schistosoma haematobium* with detailed radiographic consideration of the ureter. *Radiology* 1974; **111**: 81-84 [PMID: 4816123 DOI: 10.1148/111.1.81]
- 11 **Lee Y**, Song HB, Jung BK, Choe G, Choi MH. Case Report of Urinary Schistosomiasis in a Returned Traveler in Korea. *Korean J Parasitol* 2020; **58**: 51-55 [PMID: 32145727 DOI: 10.3347/kjp.2020.58.1.51]
- 12 **Sotillo J**, Pearson MS, Becker L, Mekonnen GG, Amoah AS, van Dam G, Corstjens PLAM, Murray J, Mduluzi T, Mutapi F, Loukas A. In-depth proteomic characterization of *Schistosoma haematobium*: Towards the development of new tools for elimination. *PLoS Negl Trop Dis* 2019; **13**: e0007362 [PMID: 31091291 DOI: 10.1371/journal.pntd.0007362]
- 13 **Kiremit MC**, Cakir A, Arslan F, Ormeci T, Erkurt B, Albayrak S. The bladder carcinoma secondary to schistosoma mansoni infection: A case report with review of the literature. *Int J Surg Case Rep* 2015; **13**: 76-78 [PMID: 26125519 DOI: 10.1016/j.ijscr.2015.05.038]
- 14 **Cunin P**, Tchuem Tchuenté LA, Poste B, Djibrilla K, Martin PM. Interactions between *Schistosoma haematobium* and *Schistosoma mansoni* in humans in north Cameroon. *Trop Med Int Health* 2003; **8**: 1110-1117 [PMID: 14641846 DOI: 10.1046/j.1360-2276.2003.01139.x]
- 15 **Khalaf I**, Shokeir A, Shalaby M. Urologic complications of genitourinary schistosomiasis. *World J Urol* 2012; **30**: 31-38 [PMID: 21909645 DOI: 10.1007/s00345-011-0751-7]
- 16 **Andrade ZA**, Rocha H. Schistosomal glomerulopathy. *Kidney Int* 1979; **16**: 23-29 [PMID: 119087 DOI: 10.1038/ki.1979.99]
- 17 **Kramer CV**, Zhang F, Sinclair D, Olliaro PL. Drugs for treating urinary schistosomiasis. *Cochrane Database Syst Rev* 2014; CD000053 [PMID: 25099517 DOI: 10.1002/14651858.CD000053.pub3]



Published by **Baishideng Publishing Group Inc**
7041 Koll Center Parkway, Suite 160, Pleasanton, CA 94566, USA

Telephone: +1-925-3991568

E-mail: bpgoffice@wjgnet.com

Help Desk: <https://www.f6publishing.com/helpdesk>

<https://www.wjgnet.com>

