

# World Journal of *Clinical Cases*

*World J Clin Cases* 2020 October 6; 8(19): 4280-4687



## Contents

Semimonthly Volume 8 Number 19 October 6, 2020

## OPINION REVIEW

- 4280 Role of monoclonal antibody drugs in the treatment of COVID-19  
*Ucciferri C, Vecchiet J, Falasca K*

## MINIREVIEWS

- 4286 Review of simulation model for education of point-of-care ultrasound using easy-to-make tools  
*Shin KC, Ha YR, Lee SJ, Ahn JH*
- 4303 Liver injury in COVID-19: A minireview  
*Zhao JN, Fan Y, Wu SD*

## ORIGINAL ARTICLE

## Case Control Study

- 4311 Transanal minimally invasive surgery vs endoscopic mucosal resection for rectal benign tumors and rectal carcinoids: A retrospective analysis  
*Shen JM, Zhao JY, Ye T, Gong LF, Wang HP, Chen WJ, Cai YK*
- 4320 Impact of *mTOR* gene polymorphisms and gene-tea interaction on susceptibility to tuberculosis  
*Wang M, Ma SJ, Wu XY, Zhang X, Abesig J, Xiao ZH, Huang X, Yan HP, Wang J, Chen MS, Tan HZ*

## Retrospective Cohort Study

- 4331 Establishment and validation of a nomogram to predict the risk of ovarian metastasis in gastric cancer: Based on a large cohort  
*Li SQ, Zhang KC, Li JY, Liang WQ, Gao YH, Qiao Z, Xi HQ, Chen L*

## Retrospective Study

- 4342 Predictive factors for early clinical response in community-onset *Escherichia coli* urinary tract infection and effects of initial antibiotic treatment on early clinical response  
*Kim YJ, Lee JM, Lee JH*
- 4349 Managing acute appendicitis during the COVID-19 pandemic in Jiaying, China  
*Zhou Y, Cen LS*
- 4360 Clinical application of combined detection of SARS-CoV-2-specific antibody and nucleic acid  
*Meng QB, Peng JJ, Wei X, Yang JY, Li PC, Qu ZW, Xiong YF, Wu GJ, Hu ZM, Yu JC, Su W*
- 4370 Prolonged prothrombin time at admission predicts poor clinical outcome in COVID-19 patients  
*Wang L, He WB, Yu XM, Hu DL, Jiang H*

- 4380** Percutaneous radiofrequency ablation is superior to hepatic resection in patients with small hepatocellular carcinoma

*Zhang YH, Su B, Sun P, Li RM, Peng XC, Cai J*

- 4388** Clinical study on the surgical treatment of atypical Lisfranc joint complex injury

*Li X, Jia LS, Li A, Xie X, Cui J, Li GL*

- 4400** Application of medial column classification in treatment of intra-articular calcaneal fractures

*Zheng G, Xia F, Yang S, Cui J*

### Clinical Trials Study

- 4410** Optimal hang time of enteral formula at standard room temperature and high temperature

*Lakananurak N, Nalinthassanai N, Suansawang W, Panarat P*

### META-ANALYSIS

- 4416** Meta-analysis reveals an association between acute pancreatitis and the risk of pancreatic cancer

*Liu J, Wang Y, Yu Y*

### SCIENTOMETRICS

- 4431** Global analysis of daily new COVID-19 cases reveals many static-phase countries including the United States potentially with unstoppable epidemic

*Long C, Fu XM, Fu ZF*

### CASE REPORT

- 4443** Left atrial appendage aneurysm: A case report

*Belov DV, Moskalev VI, Garbuzenko DV, Arefyev NO*

- 4450** Twenty-year survival after iterative surgery for metastatic renal cell carcinoma: A case report and review of literature

*De Raffele E, Mirarchi M, Casadei R, Ricci C, Brunocilla E, Minni F*

- 4466** Primary rhabdomyosarcoma: An extremely rare and aggressive variant of male breast cancer

*Satală CB, Jung I, Bara TJ, Simu P, Simu I, Vlad M, Szodorai R, Gurzu S*

- 4475** Bladder stones in a closed diverticulum caused by *Schistosoma mansoni*: A case report

*Alkhamees MA*

- 4481** Cutaneous ciliated cyst on the anterior neck in young women: A case report

*Kim YH, Lee J*

- 4488** Extremely rare case of successful treatment of metastatic ovarian undifferentiated carcinoma with high-dose combination cytotoxic chemotherapy: A case report

*Kim HB, Lee HJ, Hong R, Park SG*

- 4494** Acute amnesia during pregnancy due to bilateral fornix infarction: A case report  
*Cho MJ, Shin DI, Han MK, Yum KS*
- 4499** Ascaris-mimicking common bile duct stone: A case report  
*Choi SY, Jo HE, Lee YN, Lee JE, Lee MH, Lim S, Yi BH*
- 4505** Eight-year follow-up of locally advanced lymphoepithelioma-like carcinoma at upper urinary tract: A case report  
*Yang CH, Weng WC, Lin YS, Huang LH, Lu CH, Hsu CY, Ou YC, Tung MC*
- 4512** Spontaneous resolution of idiopathic intestinal obstruction after pneumonia: A case report  
*Zhang BQ, Dai XY, Ye QY, Chang L, Wang ZW, Li XQ, Li YN*
- 4521** Successful pregnancy after protective hemodialysis for chronic kidney disease: A case report  
*Wang ML, He YD, Yang HX, Chen Q*
- 4527** Rapid remission of refractory synovitis, acne, pustulosis, hyperostosis, and osteitis syndrome in response to the Janus kinase inhibitor tofacitinib: A case report  
*Li B, Li GW, Xue L, Chen YY*
- 4535** Percutaneous fixation of neonatal humeral physeal fracture: A case report and review of the literature  
*Tan W, Wang FH, Yao JH, Wu WP, Li YB, Ji YL, Qian YP*
- 4544** Severe fundus lesions induced by ocular jellyfish stings: A case report  
*Zheng XY, Cheng DJ, Lian LH, Zhang RT, Yu XY*
- 4550** Application of ozonated water for treatment of gastro-thoracic fistula after comprehensive esophageal squamous cell carcinoma therapy: A case report  
*Wu DD, Hao KN, Chen XJ, Li XM, He XF*
- 4558** Germinomas of the basal ganglia and thalamus: Four case reports  
*Huang ZC, Dong Q, Song EP, Chen ZJ, Zhang JH, Hou B, Lu ZQ, Qin F*
- 4565** Gastrointestinal bleeding caused by jejunal angiosarcoma: A case report  
*Hui YY, Zhu LP, Yang B, Zhang ZY, Zhang YJ, Chen X, Wang BM*
- 4572** High expression of squamous cell carcinoma antigen in poorly differentiated adenocarcinoma of the stomach: A case report  
*Wang L, Huang L, Xi L, Zhang SC, Zhang JX*
- 4579** Therapy-related acute promyelocytic leukemia with FMS-like tyrosine kinase 3-internal tandem duplication mutation in solitary bone plasmacytoma: A case report  
*Hong LL, Sheng XF, Zhuang HF*
- 4588** Metastasis of esophageal squamous cell carcinoma to the thyroid gland with widespread nodal involvement: A case report  
*Zhang X, Gu X, Li JG, Hu XJ*

- 4595** Severe hyperlipemia-induced pseudoerythrocytosis - Implication for misdiagnosis and blood transfusion: A case report and literature review  
*Zhao XC, Ju B, Wei N, Ding J, Meng FJ, Zhao HG*
- 4603** Novel brachytherapy drainage tube loaded with double 125I strands for hilar cholangiocarcinoma: A case report  
*Lei QY, Jiao DC, Han XW*
- 4609** Resorption of upwardly displaced lumbar disk herniation after nonsurgical treatment: A case report  
*Wang Y, Liao SC, Dai GG, Jiang L*
- 4615** Primary hepatic myelolipoma: A case report and review of the literature  
*Li KY, Wei AL, Li A*
- 4624** Endoscopic palliative resection of a giant 26-cm esophageal tumor: A case report  
*Li Y, Guo LJ, Ma YC, Ye LS, Hu B*
- 4633** Solitary hepatic lymphangioma mimicking liver malignancy: A case report and literature review  
*Long X, Zhang L, Cheng Q, Chen Q, Chen XP*
- 4644** Intraosseous venous malformation of the maxilla after enucleation of a hemophilic pseudotumor: A case report  
*Cai X, Yu JJ, Tian H, Shan ZF, Liu XY, Jia J*
- 4652** Intravesically instilled gemcitabine-induced lung injury in a patient with invasive urothelial carcinoma: A case report  
*Zhou XM, Wu C, Gu X*
- 4660** Bochdalek hernia masquerading as severe acute pancreatitis during the third trimester of pregnancy: A case report  
*Zou YZ, Yang JP, Zhou XJ, Li K, Li XM, Song CH*
- 4667** Localized primary gastric amyloidosis: Three case reports  
*Liu XM, Di LJ, Zhu JX, Wu XL, Li HP, Wu HC, Tuo BG*
- 4676** Displacement of peritoneal end of a shunt tube to pleural cavity: A case report  
*Liu J, Guo M*
- 4681** Parathyroid adenoma combined with a rib tumor as the primary disease: A case report  
*Han L, Zhu XF*

**ABOUT COVER**

Peer-reviewer of *World Journal of Clinical Cases*, Prof. Adrián Ángel Inchauspe, obtained his MD in 1986 from La Plata National University (Argentina), where he remained as Professor of Surgery. Study abroad, at the Aachen and Tübingen Universities in Germany in 1991, led to his certification in laparoscopic surgery, and at the Louis Pasteur University in Strasbourg France, led to his being awarded the Argentine National Invention Award in 1998 for his graduate work in tele-surgery. He currently serves as teacher in the Argentine Acupuncture Society, as Invited Foreigner Professor at the China National Academy of Sciences and Hainan Medical University, and as editorial member and reviewer for many internationally renowned journals. (L-Editor: Filipodia)

**AIMS AND SCOPE**

The primary aim of *World Journal of Clinical Cases* (*WJCC*, *World J Clin Cases*) is to provide scholars and readers from various fields of clinical medicine with a platform to publish high-quality clinical research articles and communicate their research findings online.

*WJCC* mainly publishes articles reporting research results and findings obtained in the field of clinical medicine and covering a wide range of topics, including case control studies, retrospective cohort studies, retrospective studies, clinical trials studies, observational studies, prospective studies, randomized controlled trials, randomized clinical trials, systematic reviews, meta-analysis, and case reports.

**INDEXING/ABSTRACTING**

The *WJCC* is now indexed in Science Citation Index Expanded (also known as SciSearch®), Journal Citation Reports/Science Edition, PubMed, and PubMed Central. The 2020 Edition of Journal Citation Reports® cites the 2019 impact factor (IF) for *WJCC* as 1.013; IF without journal self cites: 0.991; Ranking: 120 among 165 journals in medicine, general and internal; and Quartile category: Q3.

**RESPONSIBLE EDITORS FOR THIS ISSUE**

Production Editor: Yan-Xia Xing; Production Department Director: Yun-Xiaojuan Wu; Editorial Office Director: Jin-Lai Wang.

**NAME OF JOURNAL**

*World Journal of Clinical Cases*

**ISSN**

ISSN 2307-8960 (online)

**LAUNCH DATE**

April 16, 2013

**FREQUENCY**

Semimonthly

**EDITORS-IN-CHIEF**

Dennis A Bloomfield, Sandro Vento, Bao-Gan Peng

**EDITORIAL BOARD MEMBERS**

<https://www.wjgnet.com/2307-8960/editorialboard.htm>

**PUBLICATION DATE**

October 6, 2020

**COPYRIGHT**

© 2020 Baishideng Publishing Group Inc

**INSTRUCTIONS TO AUTHORS**

<https://www.wjgnet.com/bpg/gerinfo/204>

**GUIDELINES FOR ETHICS DOCUMENTS**

<https://www.wjgnet.com/bpg/GerInfo/287>

**GUIDELINES FOR NON-NATIVE SPEAKERS OF ENGLISH**

<https://www.wjgnet.com/bpg/gerinfo/240>

**PUBLICATION ETHICS**

<https://www.wjgnet.com/bpg/GerInfo/288>

**PUBLICATION MISCONDUCT**

<https://www.wjgnet.com/bpg/gerinfo/208>

**ARTICLE PROCESSING CHARGE**

<https://www.wjgnet.com/bpg/gerinfo/242>

**STEPS FOR SUBMITTING MANUSCRIPTS**

<https://www.wjgnet.com/bpg/GerInfo/239>

**ONLINE SUBMISSION**

<https://www.f6publishing.com>



# Therapy-related acute promyelocytic leukemia with FMS-like tyrosine kinase 3-internal tandem duplication mutation in solitary bone plasmacytoma: A case report

Li-Li Hong, Xian-Fu Sheng, Hai-Feng Zhuang

**ORCID number:** Li-Li Hong 0000-0001-7795-8223; Xian-Fu Sheng 0000-0002-7317-965X; Hai-Feng Zhuang 0000-0003-3722-7121.

**Author contributions:** Zhuang HF conceived and designed the study; Hong LL wrote the paper; Sheng XF provided the picture and material support; all authors issued final approval for the version to be submitted.

**Supported by** Natural Science Foundation of Zhejiang Province, No. LY19H290003; Zhejiang Provincial Medical and Health Science and Technology Project, No. 2020KY196; and Foundation of Zhejiang Province Chinese Medicine Science and Technology Planes, No. 2017ZB030.

**Informed consent statement:** Informed written consent was obtained from the patient for publication of this report and any accompanying images.

**Conflict-of-interest statement:** The authors declare that they have no conflict of interest.

**CARE Checklist (2016) statement:** The authors have read the CARE Checklist (2016), and the manuscript was prepared and revised according to the CARE

Li-Li Hong, Xian-Fu Sheng, Hai-Feng Zhuang, Department of Hematology, The First Affiliated Hospital of Zhejiang Chinese Medical University, Hangzhou 310000, Zhejiang Province, China

**Corresponding author:** Hai-Feng Zhuang, PhD, Associate Professor, Department of Hematology, The First Affiliated Hospital of Zhejiang Chinese Medical University, No. 54 Youdian Road, Hangzhou 310000, Zhejiang Province, China. [Zhuanghaifeng5@163.com](mailto:Zhuanghaifeng5@163.com)

## Abstract

### BACKGROUND

Therapy-related acute promyelocytic leukemia (t-APL) is a rare complication observed in solitary bone plasmacytoma (SBP), and SBP after radiotherapy evolving to APL harboring the FMS-like tyrosine kinase 3-internal tandem duplication (FLT3-ITD) mutation has never been reported. Here, we present the first case reported until now.

### CASE SUMMARY

We describe a 64-year-old woman who presented with lumbar pain and was initially diagnosed with SBP. However, after one year of radiotherapy treatment, this patient experienced a long-standing bone-marrow-suppressive period and finally developed APL harboring the FLT3-ITD mutation, as confirmed by analyses of clinical features, bone marrow morphology, flow cytometry, cytogenetic examination, and molecular biology. On admission, the patient had disseminated intravascular coagulation and intracranial hemorrhage, and the peripheral blood and bone marrow smear displayed abundant abnormal promyelocytes. Unfortunately, she died when the definite diagnosis was made.

### CONCLUSION

The patient with t-APL harboring FLT3-ITD mutation evolving from SBP after radiotherapy had not been reported and had poor clinical outcomes. FLT3-ITD mutation in t-APL may be a potential pathogenesis of leukemogenesis. We should consider the potential risk of secondary neoplasms in SBP patients after radiotherapy.

**Key Words:** Solitary bone plasmacytoma; Therapy-related acute promyelocytic; Leukemia; FMS-like tyrosine kinase 3-internal tandem duplication mutation; Radiotherapy; Cytopenia; Disseminated intravascular coagulation; Case report

Checklist (2016).

**Open-Access:** This article is an open-access article that was selected by an in-house editor and fully peer-reviewed by external reviewers. It is distributed in accordance with the Creative Commons Attribution NonCommercial (CC BY-NC 4.0) license, which permits others to distribute, remix, adapt, build upon this work non-commercially, and license their derivative works on different terms, provided the original work is properly cited and the use is non-commercial. See: <http://creativecommons.org/licenses/by-nc/4.0/>

**Manuscript source:** Unsolicited manuscript

**Received:** January 17, 2020

**Peer-review started:** January 17, 2020

**First decision:** August 21, 2020

**Revised:** September 1, 2020

**Accepted:** September 4, 2020

**Article in press:** September 4, 2020

**Published online:** October 6, 2020

**P-Reviewer:** Diamantidis MD, Fukuda S

**S-Editor:** Wang DM

**L-Editor:** Wang TQ

**P-Editor:** Wang LL



©The Author(s) 2020. Published by Baishideng Publishing Group Inc. All rights reserved.

**Core Tip:** We describe a 64-year-old woman presenting with lumbar pain who was initially diagnosed with solitary bone plasmacytoma (SBP), which finally developed into acute promyelocytic leukemia (APL) with FMS-like tyrosine kinase 3-internal tandem duplication (FLT3-ITD) mutation after radiotherapy. To the best of our knowledge, this is the first report of t-APL with FLT3-ITD mutation in a patient with SBP treated with radiotherapy. The clinical outcome of t-APL with FLT3-ITD mutation secondary to SBP after radiotherapy was poor. We should consider the potential risk of secondary neoplasms in SBP patients after radiotherapy.

**Citation:** Hong LL, Sheng XF, Zhuang HF. Therapy-related acute promyelocytic leukemia with FMS-like tyrosine kinase 3-internal tandem duplication mutation in solitary bone plasmacytoma: A case report. *World J Clin Cases* 2020; 8(19): 4579-4587

**URL:** <https://www.wjgnet.com/2307-8960/full/v8/i19/4579.htm>

**DOI:** <https://dx.doi.org/10.12998/wjcc.v8.i19.4579>

## INTRODUCTION

Solitary bone plasmacytoma (SBP) is a rare plasma cell myeloma (PCM) presenting as a single bone lesion, the biopsy of which shows infiltration by plasma cells, with no or minimal bone marrow plasmacytosis and an absence of end-organ damage, including anemia, hypercalcemia, and renal dysfunction. It accounts for less than 5% of PCMs<sup>[1]</sup>. Patients presenting with SBP, especially those with detectable plasmacytosis in the bone marrow, have a higher risk for progression to symptomatic multiple myeloma (MM): Approximately 50% of patients with SBP develop MM within 10 years after the initial diagnosis. Radiotherapy is the optimal treatment for SBP, which is highly radiosensitive. Local control rates can be achieved in 80%-90% of patients with radiation therapy alone. A subset of patients may require surgical intervention. Adjuvant chemotherapy is not indicated<sup>[2]</sup>.

Acute promyelocytic leukemia (APL), as defined in the World Health Organization Classification, is a neoplasm with t (15; 17) (q22; q21) leading to the formation of a fusion gene, PML/RAR $\alpha$ , and a striking response to all-trans retinoic acid (ATRA) therapy; thus, APL has a relatively good prognosis compared with other types of acute myeloid leukemia (AML)<sup>[3]</sup>. Although the complete remission (CR) rate was significantly improved with the ATRA-based regimen, the incidence of early death, mainly due to hemorrhagic complications, is still approximately 20%<sup>[4]</sup>. Up to 12% of all cases of acute promyelocytic leukemia are t-APL<sup>[5]</sup>. The entity was first recognized morphologically in 1970 and was described cytogenetically in the 1980s<sup>[6]</sup>. t-APL was defined as a well-recognized disorder developing after chemotherapy, radiotherapy, immunosuppressive agents, or a combination of these treatments given for a primary disease<sup>[7]</sup>.

SBP after radiotherapy evolving to APL harboring the FMS-like tyrosine kinase 3-internal tandem duplication (FLT3-ITD) mutation, but without progression to MM, has not been reported. Here, we present the first case of t-APL with the FLT3-ITD mutation after SBP radiotherapy.

## CASE PRESENTATION

### Chief complaints

A 64-year-old woman was admitted to the hematology department of our hospital in August 2019 with pancytopenia complicated by headache.

### History of present illness

The patient had recurrent pancytopenia for half a year. The symptom of headache had lasted for 4 d.



### History of past illness

The patient presented with a 3-mo history of lumbar pain and was finally diagnosed with solitary bone plasmacytoma a year ago. She had received only radiotherapy, at a dose of 45 Gy, 22 times. She was first admitted to the hospital in February 2019 due to persistent pancytopenia. The initial complete blood count (CBC) showed a hemoglobin (HB) level of 96 g/L, white blood cell count (WBC) of  $2.5 \times 10^9$ /L, and platelet (PLT) count of  $38 \times 10^9$ /L. Immunofixation electrophoresis showed that the M component was an IgG-kappa light chain. On bone marrow (BM) aspiration, 0.13% of monoclonal plasma cells were observed by flow cytometry (FCM). Biopsy revealed hypoplastic marrow without megakaryocytes. No bone lesion other than primary local lumbar injury was observed in a series of X-ray scans. The patient was diagnosed with SBP with minimal marrow involvement, according to the diagnostic criteria for plasma cell dyscrasia, with concomitant myelosuppression. She underwent treatment with thalidomide, granulocyte colony stimulating factor (G-CSF), and thrombopoietin (TPO), blood transfusion, and other supportive treatments. Peripheral blood was significantly improved after 3 mo of treatment and almost restored to normal.

### Physical examination

On admission, the patient was lucid and slurred in speech. The skin mucous membrane of the whole body had scattered haemorrhage spots. Limb activity was normal, and nervous system examination showed no abnormality.

### Laboratory examinations

The CBC revealed pancytopenia (HB 70 g/L, WBC  $3.0 \times 10^9$ /L, and PLT  $38 \times 10^9$ /L). A peripheral blood smear showed 16% of abnormal promyelocytes with dendritic protrusions (Figure 1A). Thrombin function test showed that prothrombin and partial thromboplastin times were prolonged, fibrinogen was decreased, and the D-dimers were elevated to 4.5 µg/mL. BM examination was conducted, followed by cytogenetic and molecular analyses using BM specimens. The BM aspirate showed 90% of abnormal promyelocytes with densely packed large granules (Figure 1B), which on flow cytometric immunophenotyping expressed CD13, CD33, CD117, CD56, CD81, and myeloperoxidase; partially expressed CD38 and CD34; and slightly expressed CD15, CD11b, and CD16 HLA-DR (Figure 2). Chromosome analysis using a BM sample revealed a karyotype of 46,XX,t(15;17)(q22;q21) in 20 metaphase cells examined (Figure 3). Reverse transcription-PCR (RT-PCR) analyses confirmed the presence of S-form PML/RARα gene rearrangement. The FLT3-ITD gene mutation was detected by Sanger sequencing (Figure 4). Plasma cells were not detected. A monoclonal peak was continuously observed on serum IFE, showing IgG and kappa-type monoclonal gammopathy.

### Personal and family history

The patient was married and had two daughters and one son. No additional family history was obtained.

---

## FINAL DIAGNOSIS

---

The final diagnosis of the patient presented here was t-APL with the FLT3-ITD mutation.

---

## TREATMENT

---

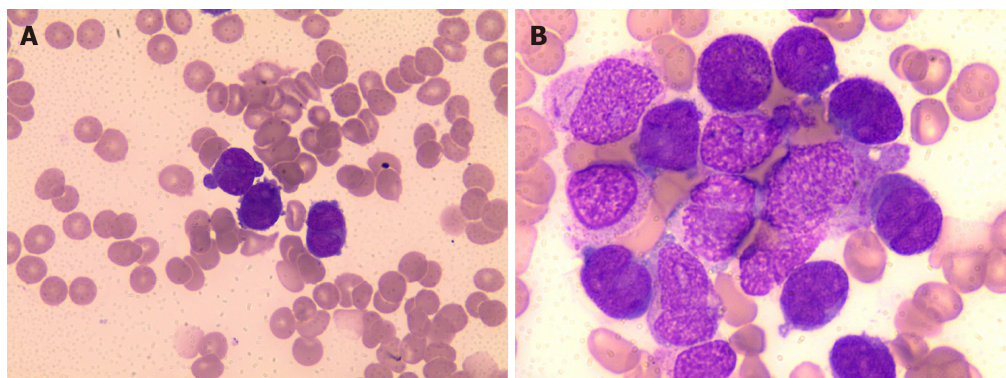
Transfusion and other supportive treatments.

---

## OUTCOME AND FOLLOW-UP

---

Unfortunately, the patient died 2 d after admission due to disseminated intravascular coagulation (DIC) and intracranial hemorrhage.



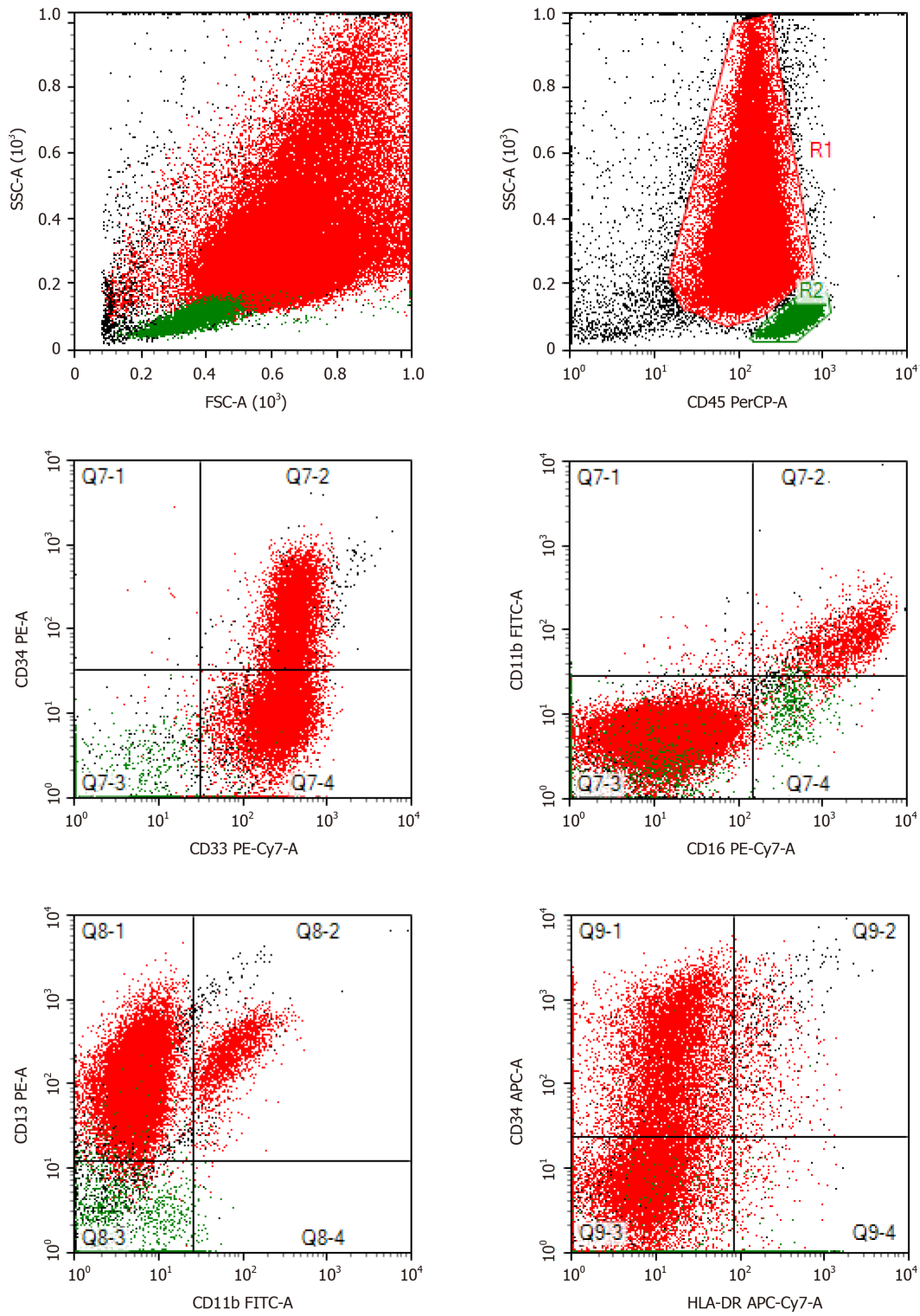
**Figure 1** Microscopic examination of peripheral blood and bone marrow. A: PB showed rouleaux formation of red blood cells and an atypical promyelocyte; B: BM aspiration smears showed increased number of atypical promyelocytes with bilobed nuclei and densely packed large granules in the cytoplasm (Wright-Giemsa staining,  $\times 1000$ ). PB: Peripheral blood; BM: Bone marrow.

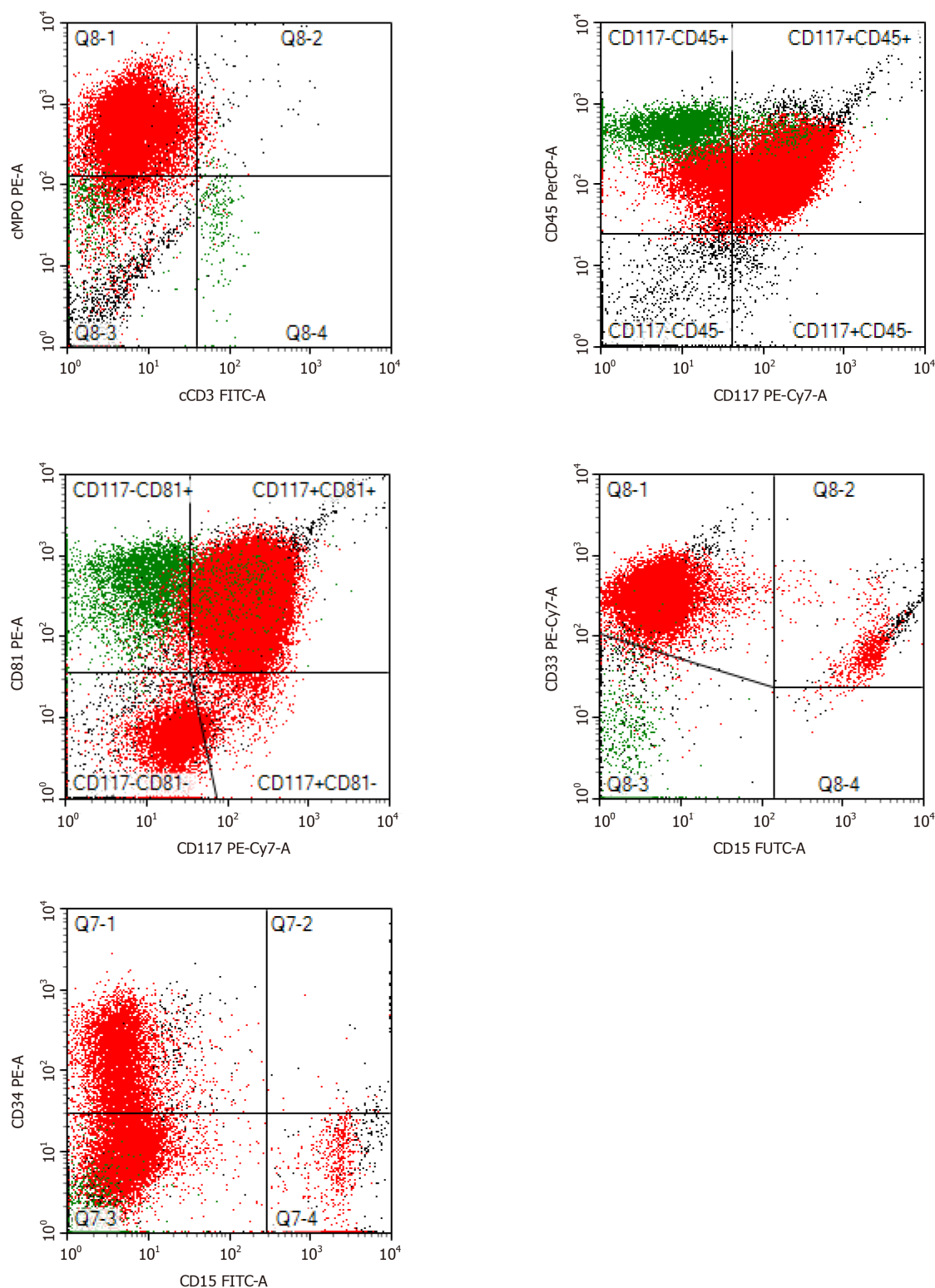
## DISCUSSION

The term t-APL is merely descriptive and a well-recognized complication, based upon a patient's history of exposure to chemo-and/or radiotherapy. Primary diseases include cancers and non-malignant disorders such as multiple sclerosis. The reported latency period ranges from a few months to several years, depending on a number of factors including type of preceding chemotherapy and/or radiation therapy and cumulative therapeutic dose<sup>[7,8]</sup>. Several studies showed no significant differences between *de novo* APL and t-APL in morphological subsets, immunophenotypes of abnormal promyelocytes, cytogenetic abnormalities, and type of PML/RAR $\alpha$  fusion gene<sup>[5,9]</sup>. Only a few t-APL cases have a myelodysplastic or pancytopenic preleukemic phase<sup>[10]</sup>. The common manifestation of t-APL includes mucocutaneous bleeding and DIC; the CR rate is approximately 80%, and relapse is uncommon, similar to *de novo* APL<sup>[7,11]</sup>. Our case described here points to a peculiar and rapidly fatal form of APL characterized by the presence of FLT3-ITD mutation. To the best of our knowledge, this is the first case report of a patient with SBP after radiotherapy, undergoing a long period of bone marrow suppression, which developed to APL harboring the FLT3-ITD gene mutation.

FMS-like tyrosine kinase 3 (FLT3) is a class III receptor tyrosine kinase that is normally expressed in human hematopoietic stem and progenitor cells but is also detected in AML, B-precursor cell acute lymphoblastic leukemia (ALL), a type of T-cell ALL, and chronic myelogenous leukemia (CML) in lymphoid blast crisis. Internal tandem duplication (ITD) and tyrosine kinase domain (TKD) are two distinct forms of FLT3 mutation thought to be involved in leukemogenesis<sup>[12,13]</sup>. FLT3-ITD is the most frequently mutated gene in APL, and the frequencies range from 20.3% to 36.8%<sup>[14-17]</sup>. As many cases of APL exhibit FLT3 mutations, the frequent identification of FLT3 mutations in t-APL is to be expected. AML patients with FLT3 mutations have a poor prognosis, whereas in APL, the presence of an FLT3 mutation seems to result in more severe outcomes<sup>[18,19]</sup>. A meta-analysis showed that the FLT3-ITD mutation had a negative effect on overall survival (OS) and disease-free survival (DFS) in APL. Even when treated with specific drugs such as ATRA and arsenic trioxide, 20%-30% of patients still relapse or fail to achieve molecular remission<sup>[19]</sup>. In view of the above, the occurrence of FLT3-ITD mutation in t-APL is considered an adverse prognostic factor. In the case reported here, the patient presented with acute bleeding onset and had a poor outcome.

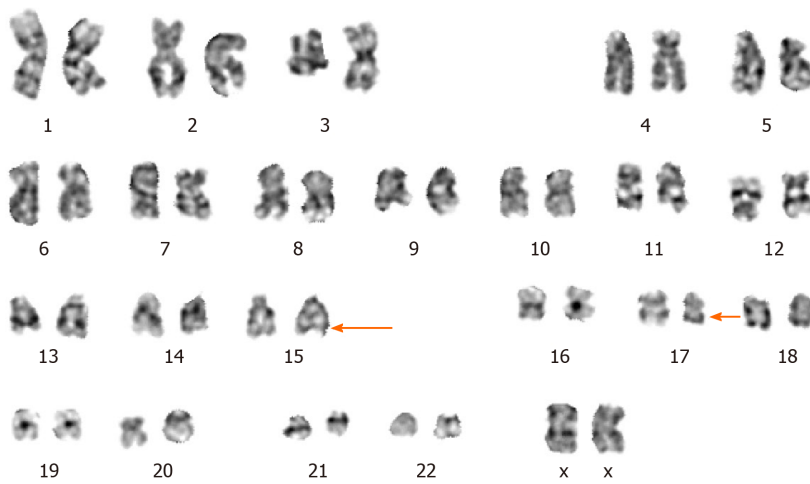
The potential molecular mechanisms of leukemogenesis in t-APL remain undefined. Studies on leukemogenesis suggest a multistep pathogenesis for t-APL. An agent causes DNA damage, leading to the acquisition of additional mutations that cooperate with the chimeric fusion protein generated by the t(15;17) translocation to induce leukemic transformation; alternatively, an agent modulates the immune system and evades immune surveillance, making the clinically occult, usually trivial, naturally occurring mutations more likely<sup>[8]</sup>. On the one hand, our case of t-APL with FLT3 mutation occurred in SBP after radiotherapy treatment. There was no evidence of dissemination to MM, implying the relationship between radiotherapy and t-APL. On the other hand, the patient in this case presented with long-standing cytopenia concomitant with monoclonal plasma cells on repeated bone marrow analyses. However, the clone of plasma cells disappeared when abnormal promyelocytes were



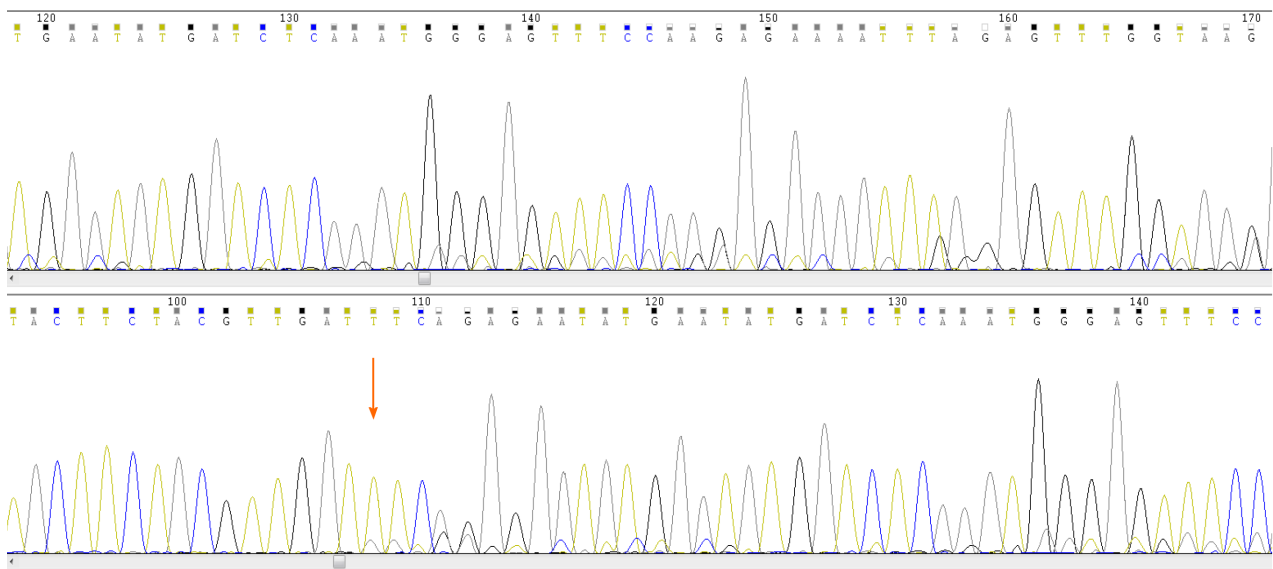


**Figure 2** Flow cytometric immunophenotyping showing that the bone marrow expressed CD13, CD33, CD117, CD56, CD81, and myeloperoxidase; partially expressed CD38 and CD34; and slightly expressed CD15, CD11b, and CD16.

detected. We speculated that one possibility was that the SBP was transformed into APL through a process of clonal evolution. Collectively, the potential pathogenesis of t-APL might be associated with radiotherapy-induced bone marrow suppression, leading to difficulty in hematopoietic recovery, increased clonal evolution changes in hematopoietic stem cells, and accelerated loss of immune surveillance. More importantly, the high frequency of FLT3 mutation was associated with a poor prognosis, which has been considered one of many second-hit events in leukemogenesis and leading to t-APL. In addition, this patient took thalidomide for



**Figure 3 Cytogenetic analysis.** G-band karyotyping of bone marrow cells revealed 46, XX, t(15; 17) (q22; q21).



**Figure 4 Sanger sequencing results indicating a positive FMS-like tyrosine kinase 3-internal tandem duplication mutation (the orange arrow indicates the mutation site).**

nearly 6 mo. It has been warned that thalidomide increases the risk of secondary hematological tumors. However, no literature has reported the malignant potential of thalidomide. A meta-analysis indicated that second primary malignancies were reported in MM patients receiving lenalidomide maintenance<sup>[20]</sup>.

The limitation of the study is that SBP and APL came from two different clones, while it is not clear whether t-APL was evolved from SBP. It seems reasonable to propose that the progression to APL after SBP is most likely an outcome of a multifactorial process: The activation of leukemia initiating factors, such as chemotherapy or radiotherapy agents; clone expansion of leukemia stem cells and the acquisition of novel gene mutations; and immune escape resulting from chemotherapy or radiotherapy. Further studies will be needed to accurately elucidate the pathogenesis of APL with FLT3 mutation after SBP. More prospective studies are needed to determine whether the FLT3-ITD mutation status can be incorporated into risk-adapted therapy algorithms.

## CONCLUSION

Patients with t-APL secondary to SBP are very rare, and those harboring the FLT3-ITD gene mutation have a worse prognosis than *de novo* APL. Our case indicates a possible



role for FLT3-ITD mutation as a risk factor for t-APL and may be one of the many second-hit events in leukemogenesis of t-APL. It brings to our attention that we should be alert to the occurrence of a second tumor in patients with SBP after radiotherapy especially with long-term bone marrow suppression.

## REFERENCES

- 1 **Pham A**, Mahindra A. Solitary Plasmacytoma: a Review of Diagnosis and Management. *Curr Hematol Malig Rep* 2019; **14**: 63-69 [PMID: 30788667 DOI: 10.1007/s11899-019-00499-8]
- 2 **Mendenhall WM**, Mendenhall CM, Mendenhall NP. Solitary plasmacytoma of bone and soft tissues. *Am J Otolaryngol* 2003; **24**: 395-399 [PMID: 14608572 DOI: 10.1016/s0196-0709(03)00092-9]
- 3 **Arber DA**. Realistic pathologic classification of acute myeloid leukemias. *Am J Clin Pathol* 2001; **115**: 552-560 [PMID: 11293903 DOI: 10.1309/K2PH-L2U7-722B-B1YR]
- 4 **McClellan JS**, Kohrt HE, Coutre S, Gotlib JR, Majeti R, Alizadeh AA, Medeiros BC. Treatment advances have not improved the early death rate in acute promyelocytic leukemia. *Haematologica* 2012; **97**: 133-136 [PMID: 21993679 DOI: 10.3324/haematol.2011.046490]
- 5 **Duffield AS**, Aoki J, Levis M, Cowan K, Gocke CD, Burns KH, Borowitz MJ, Vuica-Ross M. Clinical and pathologic features of secondary acute promyelocytic leukemia. *Am J Clin Pathol* 2012; **137**: 395-402 [PMID: 22338051 DOI: 10.1309/AJCPE0MV0YTWLUUE]
- 6 **Bennett M**. A case of myelocytic leukemia simulating the mouse model diseases. *J Surg Oncol* 1970; **2**: 239-243 [PMID: 4329395 DOI: 10.1002/jso.2930020308]
- 7 **Beaumont M**, Sanz M, Carli PM, Maloisel F, Thomas X, Detournignies L, Guerci A, Gratecos N, Rayon C, San Miguel J, Odriozola J, Cahn JY, Huguet F, Vekhof A, Stamatoulas A, Dombret H, Capote F, Esteve J, Stoppa AM, Fenaux P. Therapy-related acute promyelocytic leukemia. *J Clin Oncol* 2003; **21**: 2123-2137 [PMID: 12775738 DOI: 10.1200/JCO.2003.09.072]
- 8 **Joannides M**, Mays AN, Mistry AR, Hasan SK, Reiter A, Wiemels JL, Felix CA, Coco FL, Osheroff N, Solomon E, Grimwade D. Molecular pathogenesis of secondary acute promyelocytic leukemia. *Mediterr J Hematol Infect Dis* 2011; **3**: e2011045 [PMID: 22110895 DOI: 10.4084/MJHID.2011.045]
- 9 **Pulsoni A**, Pagano L, Lo Coco F, Avvisati G, Mele L, Di Bona E, Invernizzi R, Leoni F, Marmont F, Mele A, Melillo L, Nosari AM, Pogliani EM, Vignetti M, Visani G, Zagonel V, Leone G, Mandelli F. Clinicobiological features and outcome of acute promyelocytic leukemia occurring as a second tumor: the GIMEMA experience. *Blood* 2002; **100**: 1972-1976 [PMID: 12200354 DOI: 10.1182/blood-2001-12-0312]
- 10 **Andersen MK**, Larson RA, Mauritzson N, Schnittger S, Jhanwar SC, Pedersen-Bjergaard J. Balanced chromosome abnormalities inv(16) and t(15;17) in therapy-related myelodysplastic syndromes and acute leukemia: report from an international workshop. *Genes Chromosomes Cancer* 2002; **33**: 395-400 [PMID: 11921273 DOI: 10.1002/gcc.10043]
- 11 **Elliott MA**, Letendre L, Tefferi A, Hogan WJ, Hook C, Kaufmann SH, Pruthi RK, Pardanani A, Begna KH, Ashrani AA, Wolanskyj AP, Al-Kali A, Litzow MR. Therapy-related acute promyelocytic leukemia: observations relating to APL pathogenesis and therapy. *Eur J Haematol* 2012; **88**: 237-243 [PMID: 22023492 DOI: 10.1111/j.1600-0609.2011.01727.x]
- 12 **Gilliland DG**, Griffin JD. The roles of FLT3 in hematopoiesis and leukemia. *Blood* 2002; **100**: 1532-1542 [PMID: 12176867 DOI: 10.1182/blood-2002-02-0492]
- 13 **Anne M**, Turner NLL, Surasit Issarachai, Stewart D, Lyman, and Virginia C, Broudy. FLT3 Receptor Expression on the Surface of Normal and Malignant Human Hematopoietic Cells. *Blood*. 1996; 3383-90 [PMID: 8896403 DOI: 10.1182/blood.V88.9.3383.bloodjournal8893383]
- 14 **Thiede C**, Steudel C, Mohr B, Schaich M, Schäkel U, Platzbecker U, Wermke M, Bornhäuser M, Ritter M, Neubauer A, Ehninger G, Illmer T. Analysis of FLT3-activating mutations in 979 patients with acute myelogenous leukemia: association with FAB subtypes and identification of subgroups with poor prognosis. *Blood* 2002; **99**: 4326-4335 [PMID: 12036858 DOI: 10.1182/blood.v99.12.4326]
- 15 **Kottaridis PD**, Gale RE, Frew ME, Harrison G, Langabeer SE, Belton AA, Walker H, Wheatley K, Bowen DT, Burnett AK, Goldstone AH, Linch DC. The presence of a FLT3 internal tandem duplication in patients with acute myeloid leukemia (AML) adds important prognostic information to cytogenetic risk group and response to the first cycle of chemotherapy: analysis of 854 patients from the United Kingdom Medical Research Council AML 10 and 12 trials. *Blood* 2001; **98**: 1752-1759 [PMID: 11535508 DOI: 10.1182/blood.v98.6.1752]
- 16 **Shih LY**, Kuo MC, Liang DC, Huang CF, Lin TL, Wu JH, Wang PN, Dunn P, Lai CL. Internal tandem duplication and Asp835 mutations of the FMS-like tyrosine kinase 3 (FLT3) gene in acute promyelocytic leukemia. *Cancer* 2003; **98**: 1206-1216 [PMID: 12973844 DOI: 10.1002/cncr.11636]
- 17 **Moarii M**, Papaemmanuil E. Classification and risk assessment in AML: integrating cytogenetics and molecular profiling. *Hematology Am Soc Hematol Educ Program* 2017; **2017**: 37-44 [PMID: 29222235 DOI: 10.1182/asheducation-2017.1.37]
- 18 **Chillón MC**, Santamaría C, García-Sanz R, Balanzategui A, Sarasquete ME, Alcoceba M, Marín L, Caballero MD, Vidriales MB, Ramos F, Bernal T, Díaz-Mediavilla J, García de Coca A, Peñarrubia MJ, Queizán JA, Giraldo P, San Miguel JF, González M. Long FLT3 internal tandem duplications and reduced PML-RAR $\alpha$  expression at diagnosis characterize a high-risk subgroup of acute promyelocytic leukemia patients. *Haematologica* 2010; **95**: 745-751 [PMID: 20133893 DOI: 10.3324/haematol.2009.015073]
- 19 **Beitinjaneh A**, Jang S, Roukoz H, Majhail NS. Prognostic significance of FLT3 internal tandem duplication and tyrosine kinase domain mutations in acute promyelocytic leukemia: a systematic review. *Leuk Res* 2010; **34**: 831-836 [PMID: 20096459 DOI: 10.1016/j.leukres.2010.01.001]
- 20 **McCarthy PL**, Holstein SA, Petrucci MT, Richardson PG, Hulin C, Tosi P, Bringhen S, Musto P, Anderson KC, Caillot D, Gay F, Moreau P, Marit G, Jung SH, Yu Z, Winograd B, Knight RD, Palumbo A, Attal M. Lenalidomide Maintenance After Autologous Stem-Cell Transplantation in Newly Diagnosed Multiple



Myeloma: A Meta-Analysis. *J Clin Oncol* 2017; **35**: 3279-3289 [PMID: [28742454](#) DOI: [10.1200/JCO.2017.72.6679](#)]



Published by **Baishideng Publishing Group Inc**  
7041 Koll Center Parkway, Suite 160, Pleasanton, CA 94566, USA

**Telephone:** +1-925-3991568

**E-mail:** [bpgoffice@wjgnet.com](mailto:bpgoffice@wjgnet.com)

**Help Desk:** <https://www.f6publishing.com/helpdesk>

<https://www.wjgnet.com>

