

World Journal of *Clinical Cases*

World J Clin Cases 2020 November 26; 8(22): 5496-5834



Contents

Semimonthly Volume 8 Number 22 November 26, 2020

EDITORIAL

- 5496** Is Dynesys dynamic stabilization system superior to posterior lumbar fusion in the treatment of lumbar degenerative diseases?
Peng BG, Gao CH

MINIREVIEWS

- 5501** COVID-19: A review of what radiologists need to know
Tang L, Wang Y, Zhang Y, Zhang XY, Zeng XC, Song B
- 5513** Holistic care model of time-sharing management for severe and critical COVID-19 patients
Yang B, Gao Y, Kang K, Li J, Wang L, Wang H, Bi Y, Dai QQ, Zhao MY, Yu KJ

ORIGINAL ARTICLE

Case Control Study

- 5518** Bioequivalence of two esomeprazole magnesium enteric-coated formulations in healthy Chinese subjects
Liu ZZ, Ren Q, Zhou YN, Yang HM
- 5529** Osteoprotegerin, interleukin and hepatocyte growth factor for prediction of diabetes and hypertension in the third trimester of pregnancy
Huang SJ, Wang HW, Wu HF, Wei QY, Luo S, Xu L, Guan HQ

Retrospective Study

- 5535** High serum lactate dehydrogenase and dyspnea: Positive predictors of adverse outcome in critical COVID-19 patients in Yichang
Ly XT, Zhu YP, Cheng AG, Jin YX, Ding HB, Wang CY, Zhang SY, Chen GP, Chen QQ, Liu QC
- 5547** Risk factors analysis of prognosis of adult acute severe myocarditis
Zhang Q, Zhao R
- 5555** Sonographic features of umbilical vein recanalization for a Rex shunt on cavernous transformation of portal vein in children
Zhang YQ, Wang Q, Wu M, Li Y, Wei XL, Zhang FX, Li Y, Shao GR, Xiao J

Clinical Trials Study

- 5564** Gemcitabine plus concurrent irreversible electroporation *vs* gemcitabine alone for locally advanced pancreatic cancer
Ma YY, Leng Y, Xing YL, Li HM, Chen JB, Niu LZ

Observational Study

- 5576** No significant association between dipeptidyl peptidase-4 inhibitors and adverse outcomes of COVID-19
Zhou JH, Wu B, Wang WX, Lei F, Cheng X, Qin JJ, Cai JJ, Zhang X, Zhou F, Liu YM, Li HM, Zhu LH, She Z, Zhang X, Yang J, Li HL

META-ANALYSIS

- 5589** Interobserver agreement for contrast-enhanced ultrasound of liver imaging reporting and data system: A systematic review and meta-analysis
Li J, Chen M, Wang ZJ, Li SG, Jiang M, Shi L, Cao CL, Sang T, Cui XW, Dietrich CF

CASE REPORT

- 5603** CLAG-M chemotherapy followed by umbilical cord blood stem cell transplantation for primary refractory acute myeloid leukaemia in a child: A case report
Huang J, Yang XY, Rong LC, Xue Y, Zhu J, Fang YJ
- 5611** Multiple schwannomas with pseudoglandular element synchronously occurring under the tongue: A case report
Chen YL, He DQ, Yang HX, Dou Y
- 5618** Primary myelofibrosis with concurrent *CALR* and *MPL* mutations: A case report
Zhou FP, Wang CC, Du HP, Cao SB, Zhang J
- 5625** Endometrial stromal sarcoma extending to the pulmonary artery: A rare case report
Fan JK, Tang GC, Yang H
- 5632** Malignant acanthosis nigricans with Leser-Trélat sign and tripe palms: A case report
Wang N, Yu PJ, Liu ZL, Zhu SM, Zhang CW
- 5639** Gastric plexiform fibromyxoma: A case report
Pei JY, Tan B, Liu P, Cao GH, Wang ZS, Qu LL
- 5645** Rectoseminal vesicle fistula after radical surgery for rectal cancer: Four case reports and a literature review
Xia ZX, Cong JC, Zhang H
- 5657** Azacitidine decreases reactive oxygen species production in peripheral white blood cells: A case report
Hasunuma H, Shimizu N, Yokota H, Tatsuno I
- 5663** Oral granuloma in a pediatric patient with chronic graft-versus-host disease: A case report
Uesugi A, Tsushima F, Kodama M, Kuroshima T, Sakurai J, Harada H
- 5670** Intrahepatic biliary cystadenoma: A case report
Xu RM, Li XR, Liu LH, Zheng WQ, Zhou H, Wang XC
- 5678** Gene diagnosis of infantile neurofibromatosis type I: A case report
Li MZ, Yuan L, Zhuo ZQ

- 5684** Localized amyloidosis affecting the lacrimal sac managed by endoscopic surgery: A case report
Song X, Yang J, Lai Y, Zhou J, Wang J, Sun X, Wang D
- 5690** Endoscopic resection of benign esophageal schwannoma: Three case reports and review of literature
Li B, Wang X, Zou WL, Yu SX, Chen Y, Xu HW
- 5701** Bouveret syndrome masquerading as a gastric mass-unmasked with endoscopic luminal laser lithotripsy: A case report
Parvataneni S, Khara HS, Diehl DL
- 5707** Nonhypertensive male with multiple paragangliomas of the heart and neck: A case report
Wang Q, Huang ZY, Ge JB, Shu XH
- 5715** Completed atrioventricular block induced by atrial septal defect occluder unfolding: A case report
He C, Zhou Y, Tang SS, Luo LH, Feng K
- 5722** Clinical characteristics of adult-type annular pancreas: A case report
Yi D, Ding XB, Dong SS, Shao C, Zhao LJ
- 5729** Port-site metastasis of unsuspected gallbladder carcinoma with ossification after laparoscopic cholecystectomy: A case report
Gao KJ, Yan ZL, Yu Y, Guo LQ, Hang C, Yang JB, Zhang MC
- 5737** Gonadal dysgenesis in Turner syndrome with Y-chromosome mosaicism: Two case reports
Leng XF, Lei K, Li Y, Tian F, Yao Q, Zheng QM, Chen ZH
- 5744** Gastric mixed adenoma-neuroendocrine tumor: A case report
Kohno S, Aoki H, Kato M, Ogawa M, Yoshida K
- 5751** Sebaceous lymphadenocarcinoma of the parotid gland: A case report
Hao FY, Wang YL, Li SM, Xue LF
- 5758** Misdiagnosis of ligamentoid fibromatosis of the small mesenteric: A case report
Xu K, Zhao Q, Liu J, Zhou D, Chen YL, Zhu X, Su M, Huang K, Du W, Zhao H
- 5765** Intraoperative care of elderly patients with COVID-19 undergoing double lung transplantation: Two case reports
Wu Q, Wang Y, Chen HQ, Pan H
- 5773** Amelioration of cognitive impairment following growth hormone replacement therapy: A case report and review of literature
Liu JT, Su PH
- 5781** Early colon cancer with enteropathy-associated T-cell lymphoma involving the whole gastrointestinal tract: A case report
Zhang MY, Min CC, Fu WW, Liu H, Yin XY, Zhang CP, Tian ZB, Li XY

- 5790** Bleeding of two lumbar arteries caused by one puncture following percutaneous nephrolithotomy: A case report
Liu Q, Yang C, Lin K, Yang D
- 5795** Hemorrhagic fever with renal syndrome complicated with aortic dissection: A case report
Qiu FQ, Li CC, Zhou JY
- 5802** Robot-assisted laparoscopic pyeloureterostomy for ureteropelvic junction rupture sustained in a traffic accident: A case report
Kim SH, Kim WB, Kim JH, Lee SW
- 5809** Large leiomyoma of lower esophagus diagnosed by endoscopic ultrasonography-fine needle aspiration: A case report
Rao M, Meng QQ, Gao PJ
- 5816** Endoscopic reduction of colocolonic intussusception due to metastatic malignant melanoma: A case report
Kasuga K, Sakamoto T, Takamaru H, Sekiguchi M, Yamada M, Yamazaki N, Hashimoto T, Uraoka T, Saito Y
- 5821** Usefulness of ultrasonography to assess the response to steroidal therapy for the rare case of type 2b immunoglobulin G4-related sclerosing cholangitis without pancreatitis: A case report
Tanaka Y, Kamimura K, Nakamura R, Ohkoshi-Yamada M, Koseki Y, Mizusawa T, Ikarashi S, Hayashi K, Sato H, Sakamaki A, Yokoyama J, Terai S

LETTER TO THE EDITOR

- 5831** Is positivity for hepatitis C virus antibody predictive of lower risk of death in COVID-19 patients with cirrhosis?
Mangia A, Cenderello G, Verucchi G, Ciancio A, Fontana A, Piazzolla V, Minerva N, Squillante MM, Copetti M

ABOUT COVER

Peer-reviewer of *World Journal of Clinical Cases*, Dr. Galiatsatos Aristidis is an Associate Professor, Department of Biomedical Sciences, Division of Dental Technology, University of West Attica. After graduating from the Faculty of Dentistry of University of Thessaloniki in 1988, he completed his PhD in the Dental Prosthodontics Department of Athens University in 1996. From 1988 to 2005, he continued his professional training in the University of Athens as a Research Fellow in Prosthodontics. During the 1998-1999 academic year, he was hired as a paid research scientist in the same subject area. In 2009, he rose to Assistant and then Associate Professor in the University of West Attica. From September 2019, he has served as Director of the Division of Dental Technology. (L-Editor: Filipodia)

AIMS AND SCOPE

The primary aim of *World Journal of Clinical Cases* (*WJCC*, *World J Clin Cases*) is to provide scholars and readers from various fields of clinical medicine with a platform to publish high-quality clinical research articles and communicate their research findings online.

WJCC mainly publishes articles reporting research results and findings obtained in the field of clinical medicine and covering a wide range of topics, including case control studies, retrospective cohort studies, retrospective studies, clinical trials studies, observational studies, prospective studies, randomized controlled trials, randomized clinical trials, systematic reviews, meta-analysis, and case reports.

INDEXING/ABSTRACTING

The *WJCC* is now indexed in Science Citation Index Expanded (also known as SciSearch®), Journal Citation Reports/Science Edition, PubMed, and PubMed Central. The 2020 Edition of Journal Citation Reports® cites the 2019 impact factor (IF) for *WJCC* as 1.013; IF without journal self cites: 0.991; Ranking: 120 among 165 journals in medicine, general and internal; and Quartile category: Q3.

RESPONSIBLE EDITORS FOR THIS ISSUE

Production Editor: Ji-Hong Liu; Production Department Director: Xiang Li; Editorial Office Director: Jin-Lai Wang.

NAME OF JOURNAL

World Journal of Clinical Cases

ISSN

ISSN 2307-8960 (online)

LAUNCH DATE

April 16, 2013

FREQUENCY

Semimonthly

EDITORS-IN-CHIEF

Dennis A Bloomfield, Sandro Vento, Bao-Gan Peng

EDITORIAL BOARD MEMBERS

<https://www.wjgnet.com/2307-8960/editorialboard.htm>

PUBLICATION DATE

November 26, 2020

COPYRIGHT

© 2020 Baishideng Publishing Group Inc

INSTRUCTIONS TO AUTHORS

<https://www.wjgnet.com/bpg/gerinfo/204>

GUIDELINES FOR ETHICS DOCUMENTS

<https://www.wjgnet.com/bpg/GerInfo/287>

GUIDELINES FOR NON-NATIVE SPEAKERS OF ENGLISH

<https://www.wjgnet.com/bpg/gerinfo/240>

PUBLICATION ETHICS

<https://www.wjgnet.com/bpg/GerInfo/288>

PUBLICATION MISCONDUCT

<https://www.wjgnet.com/bpg/gerinfo/208>

ARTICLE PROCESSING CHARGE

<https://www.wjgnet.com/bpg/gerinfo/242>

STEPS FOR SUBMITTING MANUSCRIPTS

<https://www.wjgnet.com/bpg/GerInfo/239>

ONLINE SUBMISSION

<https://www.f6publishing.com>



Gastric mixed adenoma-neuroendocrine tumor: A case report

Shuzo Kohno, Hiroaki Aoki, Masayuki Kato, Masaich Ogawa, Kazuhiko Yoshida

ORCID number: Shuzo Kohno 0000-0001-9508-7169; Hiroaki Aoki 0000-0002-7155-8867; Masayuki Kato 0000-0002-0338-2310; Masaich Ogawa 0000-0002-7366-4540; Kazuhiko Yoshida 0000-0002-3834-0153.

Author contributions: Kohno S wrote the paper; Kato M contributed to endoscopic diagnosis and explanation; Aoki H, Ogawa M and Yoshida K revised the manuscript for final submission.

Informed consent statement: We have obtained the patient's consent for this case report.

Conflict-of-interest statement: The authors declare no conflicts of interest.

CARE Checklist (2016) statement: The authors have read the CARE Checklist (2016), and the manuscript was prepared and revised according to the CARE Checklist (2016).

Open-Access: This article is an open-access article that was selected by an in-house editor and fully peer-reviewed by external reviewers. It is distributed in accordance with the Creative Commons Attribution NonCommercial (CC BY-NC 4.0) license, which permits others to distribute, remix, adapt, build upon this work non-commercially,

Shuzo Kohno, Hiroaki Aoki, Masaich Ogawa, Kazuhiko Yoshida, Department of Surgery, The Jikei University Katsushika Medical Center, Tokyo 125-8506, Katsushika-ku, Japan

Masayuki Kato, Department of Endoscopy, The Jikei University Katsushika Medical Center, Tokyo 125-8506, Katsushika-ku, Japan

Corresponding author: Shuzo Kohno, MD, PhD, Associate Professor, Department of Surgery, The Jikei University Katsushika Medical Center, 6-41-2 Aoto, Tokyo 125-8506, Katsushika-ku, Japan. s-kohno@jikei.ac.jp

Abstract

BACKGROUND

Gastric mixed adenoma-neuroendocrine tumors (NETs) are quite rare. In the 2019 world health organization classification of tumors of the digestive system, these were designated as a combination of grade 1 or grade 2 NETs and adenomas or tubular adenomas. There are no treatment guidelines for these tumors, and pathological and clinical studies are ongoing. Herein, we review previous case reports and present a case of gastric mixed adenoma-NET.

CASE SUMMARY

A 66-year-old man underwent gastrointestinal endoscopy for the evaluation of upper abdominal pain. Histopathological examination of the biopsy specimen indicated the possibility of gastric cancer. A histopathological examination by endoscopic submucosal dissection showed a mixed adenoma-NET that was completely excised by endoscopic submucosal dissection. No recurrence was observed on gastrointestinal endoscopy at the 6-mo follow-up.

CONCLUSION

Clinicians' awareness of this rare tumor is important for its timely diagnosis and treatment.

Key Words: Adenoma; Neuroendocrine tumor; Diagnosis; Pathology; Stomach treatment; Case report

©The Author(s) 2020. Published by Baishideng Publishing Group Inc. All rights reserved.

Core Tip: Neuroendocrine tumors are rare tumors, and analysis and classification of tumors have progressed due to recent advances in immunostaining and gene analysis.

and license their derivative works on different terms, provided the original work is properly cited and the use is non-commercial. See: <http://creativecommons.org/licenses/by-nc/4.0/>

Manuscript source: Unsolicited manuscript

Specialty type: Medicine, research and experimental

Country/Territory of origin: Japan

Peer-review report's scientific quality classification

Grade A (Excellent): 0
Grade B (Very good): 0
Grade C (Good): C
Grade D (Fair): 0
Grade E (Poor): 0

Received: August 6, 2020

Peer-review started: August 6, 2020

First decision: August 22, 2020

Revised: September 12, 2020

Accepted: September 23, 2020

Article in press: September 23, 2020

Published online: November 26, 2020

P-Reviewer: Yu C

S-Editor: Zhang L

L-Editor: A

P-Editor: Li JH



The mixture of gastric adenoma or adenocarcinoma with neuroendocrine tumor is quite rare, and it is interesting to investigate the mechanism of tumor development and differentiation. We experienced a case of mixed adenoma- neuroendocrine tumors and considered problems in diagnosis and treatment, so we will report it together with other reported cases.

Citation: Kohno S, Aoki H, Kato M, Ogawa M, Yoshida K. Gastric mixed adenoma-neuroendocrine tumor: A case report. *World J Clin Cases* 2020; 8(22): 5744-5750

URL: <https://www.wjgnet.com/2307-8960/full/v8/i22/5744.htm>

DOI: <https://dx.doi.org/10.12998/wjcc.v8.i22.5744>

INTRODUCTION

Neuroendocrine tumors (NETs) are a rare type of gastric tumor. Moreover, lesions with a combination of endocrine tumors and gastric adenomas have a very low incidence^[1]. There are few case reports^[1-5] of gastric mixed adenoma-NETs, and the clinical features are unknown. Advances in immunohistochemical staining and genetic analysis have led to their classification as mixed adenoma-NETs^[6]. Gastric mixed adenoma-NETs are not commonly recognized by clinicians and are difficult to diagnose from a forceps biopsy specimen^[1,7]. Herein, we report a case of gastric mixed adenoma-NET and review it together with 10 case reports.

CASE PRESENTATION

Chief complaints

A 66-year-old man presented with upper abdominal pain in September 2019.

History of present illness

The patient was receiving outpatient treatment to hypertension. In September 2019, he went to the clinic complaining intermittent epigastric pain and underwent gastrointestinal endoscopy.

History of past illness

The patient had a history of hypertension, hyperlipidemia, and colorectal polyps.

Personal and family history

There is nothing special to mention in personal and family history.

Physical examination

Physical examination was normal.

Laboratory examinations

Laboratory examinations are almost normal.

Imaging examinations

Endoscopy showed a superficial-elevated (0-IIa) granular lesion with a maximum diameter of 10 mm on the anterior wall of the gastric body (Figure 1).

Histopathological examinations

Histopathological examination revealed the proliferation of intestinal-type glands within the gastric mucosa and irregular branching in some of the glands. Despite mild nuclear stratification and enlargement, most of the visible glands were those of adenomas, although some had structurally atypical glands suggestive of a well-differentiated adenocarcinoma (Figure 2). The change in the surrounding mucosa was diagnosed as atrophic gastritis.

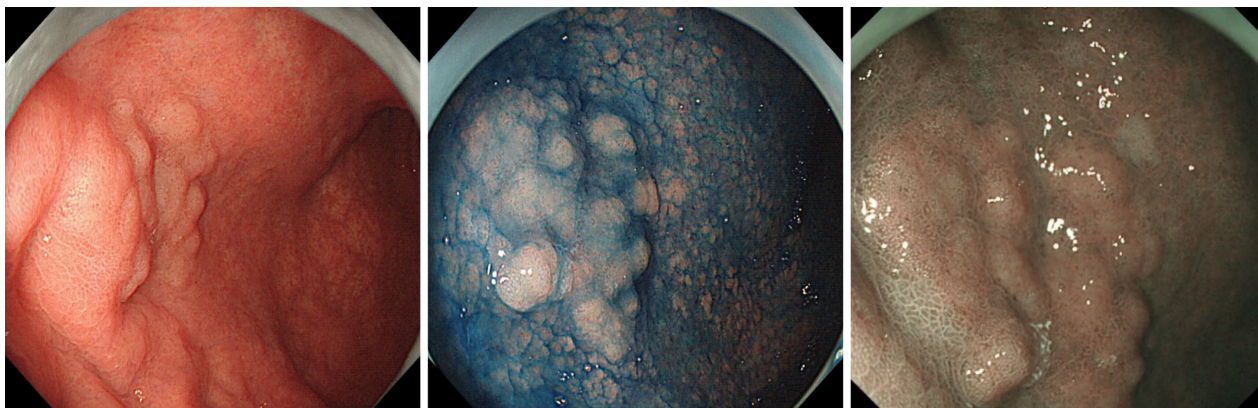


Figure 1 Gastroendoscopy findings. Endoscopic findings showed granular superficial elevated (0-IIa) lesion with a maximum diameter of 10 mm on the anterior wall of the gastric body.

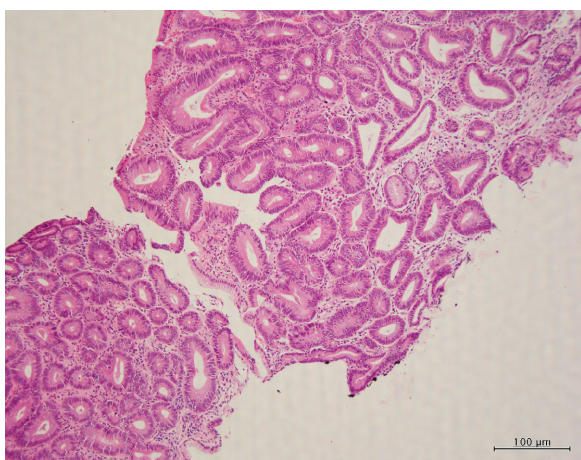


Figure 2 Pathologic examination. Microscopic examination (hematoxylin and eosin-stain) of biopsy specimen showed many ducts for adenomas, but some of them have structural atypical ducts, suggesting well-differentiated adenocarcinoma.

FINAL DIAGNOSIS

These cells resected by endoscopic submucosal dissection (ESD) were categorized as grade 1 (G1) NET cells. There was no submucosal invasion. Based on the histopathological features, the lesion was interpreted as a mixed adenoma-NET.

TREATMENT

Therefore, the patient underwent ESD in November 2019. The ESD-resected specimen measured 30 mm × 30 mm, and hematoxylin and eosin staining showed slightly elevated lesions with many superficial tubular or dilated glands without fusing. The glands were lined by moderately atypical epithelial cells, indicating a diagnosis of tubular adenomas (Figure 3). Immunohistochemically, these atypical cells were weakly positive for p-53, and scattered neuroendocrine cells (synaptophysin + chromogranin A) were present in the deep adenoma. Many cords and sheets of small neuroendocrine-type cells that formed small clusters or sheets were observed. These cells were diffusely positive for synaptophysin and keratin. Staining for chromogranin A occasionally tested positive, whereas testing for Ki-67 was rarely positive (< 1%), and for p-53 was negative (Figure 4). No molecular pathological examination was performed.

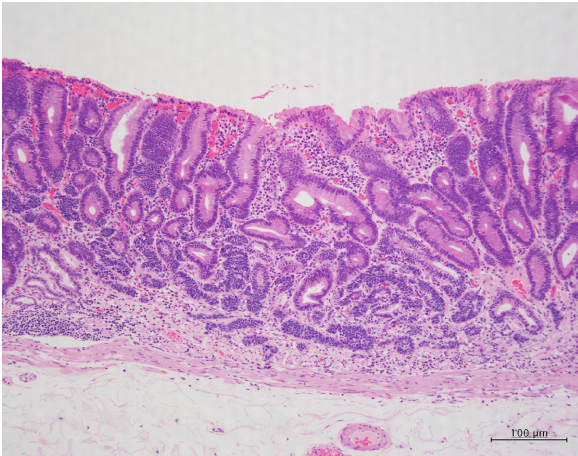


Figure 3 Pathologic examination. Microscopic examination (hematoxylin and eosin -stain) of resected gastric membrane showed mixture of superficial mucosal adenoma and deep mucosal neuroendocrine tumor.

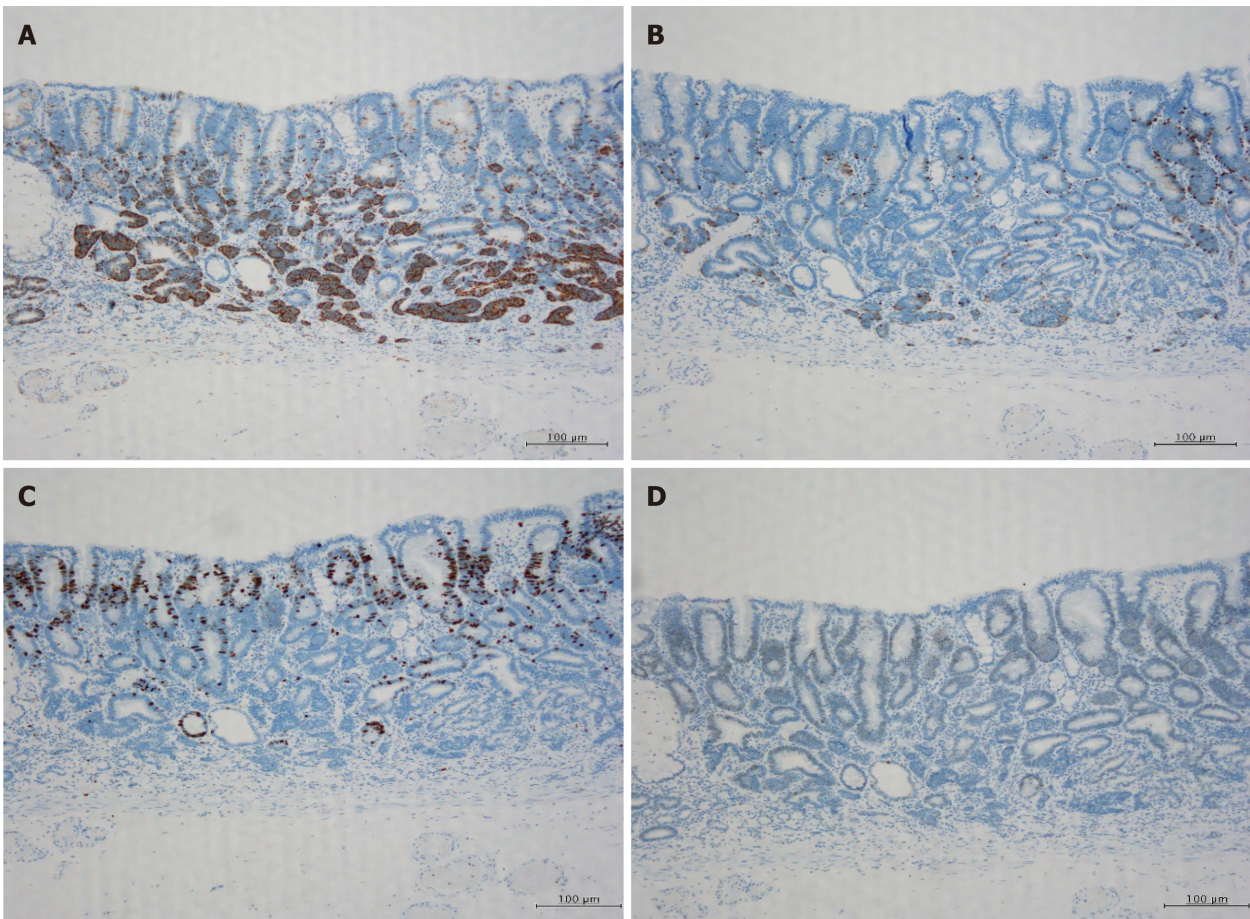


Figure 4 Immunohistochemical staining for synaptophysin, chromogranin, Ki-67, and p-53. A: Immunohistochemical staining with synaptophysin showed diffuse staining in the cytoplasm of neuroendocrine tumor (NET); B: Immunohistochemical staining with chromogranin slightly stained the NET cytoplasm; C: Immunohistochemical staining with Ki-67 showed a MIB-1 index of 1% or less in the NET region; D: Immunohistochemical staining with p-53 showed almost no staining.

OUTCOME AND FOLLOW-UP

After ESD, the patient was discharged from the hospital without complications. Endoscopic examination conducted 6 mo after ESD showed no tumor recurrence.

DISCUSSION

Composite glandular carcinoid tumors of the digestive tract was first reported in 1988 by Moyana *et al*^[10]. Owing to research progress, the definition of this lesion has changed over time. This lesion has received multiple names, including carcinoid tumor in adenoma, NET in adenoma, mixed adenoma well-differentiated neuroendocrine tumor, and mixed adenoma-NET^[1-8]. Tumors with a mixture of glandular and neuroendocrine components in the gastrointestinal tract were classified as mixed neuroendocrine-non-neuroendocrine neoplasms (MiNEN) or mixed adenoma-NET following the 2019 World Health Organization (WHO) classification^[9]. MiNEN includes mixed adenocarcinoma-neuroendocrine carcinoma or mixed adenoneuroendocrine carcinoma and mixed adenocarcinoma-NET. Mixed adenoma-NET has been classified separately from MiNEN in the 2019 WHO classification based on characteristic findings that were identified through advances in immunohistochemical staining and genetic testing^[9]. Gastric mixed adenoma-NET is a rare tumor that is composed of G1 or grade 2 (G2) NETs as well as adenomas or tubulovillous adenomas. According to the 2019 WHO classification, neuroendocrine tumors (well-differentiated NETs with relatively low malignancy) are designated as G1 and G2 NETs. G1 and G2 are classified by the Ki-index^[11,12]. As a typical pathological feature, the neuroendocrine component is generally located within the deep central portion of the polyp, whereas the adenomatous component occupies most of the periphery^[1].

Although gastric lesions with mixed adenomas and NETs are rare, there are several reports showing similar cases^[1-8]. 1 shows a report of gastric mixed adenoma-NETs. Eleven cases, including our case, have been reported. The average age was 65.1 years, and one of the cases was a female and the remaining cases were males. The average length of the tumor was 14.7 mm. The depth of invasion of the tumor was submucosal in 2 cases, mucosal in 8 cases, and unknown in 1 case. Treatment was ESD in 5 cases, polypectomy in 3 cases, gastrectomy in 2 cases, and unknown in the last case. No deaths were observed during the follow-up period. Endoscopic macroscopic findings included sessile polyps in 5 cases, 0-IIa type polyp in 1 case, the endoscopic findings were unknown in 5 cases. Gastric adenoma-NET was diagnosed by forceps biopsy in 3 cases and by evaluation of the pathological specimen obtained by polypectomy in 2 cases. One case was diagnosed as adenoma, another case was suspected to be an adenocarcinoma, and the diagnoses of the remaining four cases were unknown. According to Lee *et al*^[7], who reported three cases among the unknown cases, the pathological diagnosis of mixed adenoma-NET by forceps biopsy was difficult (Table 1).

In our case, an early gastric cancer was suspected before ESD, but histopathological examination led to a final diagnosis of gastric mixed adenoma-NET. This lesion may be misdiagnosed as an adenocarcinoma due to the mixture and fusion of the gastric adenoma and neuroendocrine cells in some areas^[1,7]. When an adenoma is investigated by endoscopy, malignant findings are often unevenly distributed and it is difficult to reliably diagnose the presence of malignancy or NET component by biopsy^[1,7,13,14]. Localized endocrine neoplasia occurs frequently in both benign and malignant gastrointestinal tumors, whereas a truly mixed glandular endocrine neoplasia is a very rare tumor. Moreover, an accurate diagnosis based on histopathological examination of the biopsy specimen is difficult due to the presence of similar characteristics in MiNEN^[15]. Mixed adenoma-NETs are considered difficult to diagnose by biopsy. To avoid a missed diagnosis, recognition of this disease is important. Consequently, diagnosis often requires histopathological examination by excision in addition to forceps biopsy^[1].

The optimal treatment should be selected based on detailed results of the histopathological examination of the resected lesion. G1 NET is considered a low malignant potential tumor, although a few cases of lymph node metastasis in the same lesion have been reported, further research is required to ascertain the malignant potential of NETs^[16,17].

To date, there are no therapeutic guidelines for mixed gastric adenoma and NET lesions. Hence, treatment is directed at the more aggressive and invasive lesions of the two components. Complete resection is the only treatment when the adenomatous part of the stomach is the more aggressive component. After the gastric cancer component is diagnosed as more aggressive, it is classified as MiNEN, and the treatment is performed following treatment for gastric cancer^[18]. In cases where the NET component has a stronger or more aggressive malignant potential, we treated for NET following the recommended treatment methods^[16,19]. Lymph node dissection is useful for lesions that are at high risk for lymph node metastasis^[16]. Resection with lymph

Table 1 Review of the literature, clinicopathological features of gastric mixed adenoma- neuroendocrine tumor

No	Ref.	Age	Sex	Size (mm)	Location	Polyp type	Adenoma type	NET grade	Forceps biopsy diagnosis	Depth	Procedure	Follow-up
1	Lehtola <i>et al</i> ^[2]	NA	M	5	Body	0-Is	TA, NA	NA	Gastric mixed adenoma-NET	NA	Polypectomy	AFD (1 yr)
2	Ito <i>et al</i> ^[3]	54	M	20	Body	0-Is	TA, LG	NA	By polypectomy	MM	Subtotal Gx	AFD (19 yr)
3	Harada <i>et al</i> ^[4]	72	M	10	Body LC, GC	0-Is	NA	NA	Gastric mixed adenoma-NET	LP	Bx→ESD	AFD (13 yr)
4	De Marco <i>et al</i> ^[5]	76	M	10	Body	0-Is	TA, LG	G1	By polypectomy	MM	Polypectomy	AFD (10 mo)
5	Coyne and O'Connor ^[6]	68	F	11	NA	NA	TA, LG	G1	Gastric mixed adenoma-NET	SM	Bx→polypectomy	NA
6	Lee <i>et al</i> ^[7]	64	M	6	Body PW	NA	TA, NA	NA	NA	MM	ESD	AFD (2 yr)
7	Lee <i>et al</i> ^[7]	63	M	40	Antrum	NA	TA, NA	NA	NA	LP	ESD	AFD (2 yr)
8	Lee <i>et al</i> ^[7]	52	M	18	Body PW	NA	TA, NA	NA	NA	MM	ESD	AFD (2 yr)
9	La Rosa <i>et al</i> ^[1]	55	M	15	NA	NA	TA, HG	G1	NA	MM	NA	AFD (27 yr)
10	Matsubara <i>et al</i> ^[8]	69	M	5	Body AW	0-Is	NA	G2	Adenoma	SM	ESD→proximal Gx	NA
11	Case	66	M	22	Body AW	0-IIa	TA, HG	G1	Adenocarcinoma susp	MM	ESD	AFD (6 mo)

AFD: Indicates alive free of disease; AW: Anterior wall; Bx: Biopsy; F: Female; HG: High grade; GC: Great curvature; Gx: Gastrectomy; LC: Lesser curvature; LG: Low grade; LP: Lamina propria; M: Male; MM: Muscularis mucosae; NA: Not available; NET: Neuroendocrine tumor; PW: Posterior wall; SM: Submucosa; TA: Tubular adenoma; 0-Is: Sessile polyp.

node dissection is recommended in accordance with the NET classification and tumor size^[16]. In NETs, the possibility of lymph node metastasis is defined by the size and depth of invasion; therefore, preoperative diagnosis is essential for lymph node dissection during tumor resection. Among NETs < 1 cm that invade the lamina propria or submucosa, the incidence of lymph node metastasis is reported to be 3.4%. Endoscopic resection may be appropriate for intraepithelial tumors < 2 cm, and perhaps tumors < 1 cm invading into the lamina propria or submucosa^[16]. Thus, we believe that a combined therapeutic strategy and the application of current knowledge would lead to better treatment. Given that this is a rare disease, accurate diagnosis through histopathological analysis of the lesions and scrutinization of recent information is important to determine the treatment plan.

CONCLUSION

Mixed adenoma-NET may be found in gastric polyps, and its recognition is necessary for diagnosis and treatment.

ACKNOWLEDGEMENTS

We would like to thank Dr. Nomura K in the Department of Pathology for his guidance on the diagnosis of pathological tissues and the interpretation of lesions.

REFERENCES

- 1 **La Rosa S**, Uccella S, Molinari F, Savio A, Mete O, Vanoli A, Maragliano R, Frattini M, Mazzucchelli L, Sessa F, Bongiovanni M. Mixed Adenoma Well-differentiated Neuroendocrine Tumor (MANET) of the Digestive System: An Indolent Subtype of Mixed Neuroendocrine-NonNeuroendocrine Neoplasm (MiNEN). *Am J Surg Pathol* 2018; **42**: 1503-1512 [PMID: 30001239 DOI: 10.1097/PAS.0000000000001123]
- 2 **Lehtola J**, Karttunen T, Krekelä I, Niemelä S, Räsänen O. Gastric carcinoids with minimal or no macroscopic lesion in patients with pernicious anemia. *Hepatogastroenterology* 1985; **32**: 72-76 [PMID: 4007765]
- 3 **Ito H**, Ito M, Tahara E. Minute carcinoid arising in gastric tubular adenoma. *Histopathology* 1989; **15**: 96-99 [PMID: 2767625 DOI: 10.1111/j.1365-2559.1989.tb03046.x]
- 4 **Harada T**, Imura M, Masutani M, Konno S, Miyazaki H, Nomura A, Okushiba S, Katoh H, Itoh T, Shimizu M, Kawakami Y. Carcinoid tumor detected in gastric adenoma during long-term follow-up. *Gastrointest Endosc* 2001; **53**: 804-806 [PMID: 11375597 DOI: 10.1067/mge.2001.114960]
- 5 **De Marco L**, Carlinfante G, Botticelli L, Di Maira PV, Putrino I, Cavazza A. [Mixed neoplasia of the stomach: description of a case of tubular adenoma combined with carcinoid]. *Pathologica* 2003; **95**: 214-216 [PMID: 14577207]
- 6 **Coyne JD**, O'Connor B. Mixed adenoma-endocrine tumour of the stomach. *Histopathology* 2010; **57**: 492-494 [PMID: 20840678 DOI: 10.1111/j.1365-2559.2010.03630.x]
- 7 **Lee SM**, Ahn S, Lee YK, Jang KT, Park CK, Kim KM. Neuroendocrine tumor in gastric adenoma: a diagnostic pitfall mimicking invasive adenocarcinoma. *Diagn Pathol* 2012; **7**: 102 [PMID: 22894753 DOI: 10.1186/1746-1596-7-102]
- 8 **Matsubara T**, Hirahara N, Tabara H. A case report of a gastric neuroendocrine tumor arising from gastric adenoma. *Int Surg* 2020; In press [DOI: 10.9738/INTSURG-D-20-00004.1]
- 9 **WHO Classification of Tumors Editorial Board**. WHO Classification of Tumors. Digestive System Tumors, 5th ed. International Agency for Research on Cancer (LARC): Lyon, France, 2019
- 10 **Moyana TN**, Qizilbash AH, Murphy F. Composite glandular-carcinoid tumors of the colon and rectum. Report of two cases. *Am J Surg Pathol* 1988; **12**: 607-611 [PMID: 3400791 DOI: 10.1097/0000478-198808000-00001]
- 11 **de Mestier L**, Cros J, Neuzillet C, Hentic O, Egal A, Muller N, Bouché O, Cadiot G, Ruzsiewicz P, Couvelard A, Hammel P. Digestive System Mixed Neuroendocrine-Non-Neuroendocrine Neoplasms. *Neuroendocrinology* 2017; **105**: 412-425 [PMID: 28803232 DOI: 10.1159/000475527]
- 12 **Nagtegaal ID**, Odze RD, Klimstra D, Paradis V, Rugge M, Schirmacher P, Washington KM, Carneiro F, Cree IA; WHO Classification of Tumours Editorial Board. The 2019 WHO classification of tumours of the digestive system. *Histopathology* 2020; **76**: 182-188 [PMID: 31433515 DOI: 10.1111/his.13975]
- 13 **Kasuga A**, Yamamoto Y, Fujisaki J, Okada K, Omae M, Ishiyama A, Hirasawa T, Chino A, Tsuchida T, Igarashi M, Hoshino E, Yamamoto N, Kawaguchi M, Fujita R. Clinical characterization of gastric lesions initially diagnosed as low-grade adenomas on forceps biopsy. *Dig Endosc* 2012; **24**: 331-338 [PMID: 22925285 DOI: 10.1111/j.1443-1661.2012.01238.x]
- 14 **Kim MS**, Kim SG, Chung H, Kim J, Hong H, Lee HJ, Kim HJ, Kim MA, Kim WH, Jung HC. Clinical Implication and Risk Factors for Malignancy of Atypical Gastric Gland during Forceps Biopsy. *Gut Liver* 2018; **12**: 523-529 [PMID: 29938460 DOI: 10.5009/gnl18006]
- 15 **Frizziero M**, Chakrabarty B, Nagy B, Lamarca A, Hubner RA, Valle JW, McNamara MG. Mixed Neuroendocrine Non-Neuroendocrine Neoplasms: A Systematic Review of a Controversial and Underestimated Diagnosis. *J Clin Med* 2020; **9** [PMID: 31963850 DOI: 10.3390/jcm9010273]
- 16 **Saund MS**, Al Natour RH, Sharma AM, Huang Q, Boosalis VA, Gold JS. Tumor size and depth predict rate of lymph node metastasis and utilization of lymph node sampling in surgically managed gastric carcinoids. *Ann Surg Oncol* 2011; **18**: 2826-2832 [PMID: 21455598 DOI: 10.1245/s.10434-011-1652-0]
- 17 **Soga J**. Early-stage carcinoids of the gastrointestinal tract: an analysis of 1914 reported cases. *Cancer* 2005; **103**: 1587-1595 [PMID: 15742328 DOI: 10.1002/encr.20939]
- 18 **Japanese Gastric Cancer Association**. Japanese gastric cancer treatment guidelines 2018 (5th edition). *Gastric Cancer* 2020 [PMID: 32060757 DOI: 10.1007/s10120-020-01042-y]
- 19 **Shen C**, Chen H, Chen H, Yin Y, Han L, Chen J, Tang S, Yin X, Zhou Z, Zhang B, Chen Z. Surgical treatment and prognosis of gastric neuroendocrine neoplasms: a single-center experience. *BMC Gastroenterol* 2016; **16**: 111 [PMID: 27613657 DOI: 10.1186/s12876-016-0505-5]



Published by **Baishideng Publishing Group Inc**
7041 Koll Center Parkway, Suite 160, Pleasanton, CA 94566, USA

Telephone: +1-925-3991568

E-mail: bpgoffice@wjgnet.com

Help Desk: <https://www.f6publishing.com/helpdesk>

<https://www.wjgnet.com>

