

# World Journal of *Clinical Cases*

*World J Clin Cases* 2021 August 26; 9(24): 6964-7291



### OPINION REVIEW

- 6964** Reconsideration of recurrence and metastasis in colorectal cancer  
*Wang R, Su Q, Yan ZP*

### MINIREVIEWS

- 6969** Multiple immune function impairments in diabetic patients and their effects on COVID-19  
*Lu ZH, Yu WL, Sun Y*
- 6979** Discontinuation of antiviral therapy in chronic hepatitis B patients  
*Medas R, Liberal R, Macedo G*

### ORIGINAL ARTICLE

#### Case Control Study

- 6987** Textural differences based on apparent diffusion coefficient maps for discriminating pT3 subclasses of rectal adenocarcinoma  
*Lu ZH, Xia KJ, Jiang H, Jiang JL, Wu M*

#### Retrospective Cohort Study

- 6999** Cost-effective screening using a two-antibody panel for detecting mismatch repair deficiency in sporadic colorectal cancer  
*Kim JB, Kim YI, Yoon YS, Kim J, Park SY, Lee JL, Kim CW, Park IJ, Lim SB, Yu CS, Kim JC*

#### Retrospective Study

- 7009** Novel model combining contrast-enhanced ultrasound with serology predicts hepatocellular carcinoma recurrence after hepatectomy  
*Tu HB, Chen LH, Huang YJ, Feng SY, Lin JL, Zeng YY*
- 7022** Influence of volar margin of the lunate fossa fragment fixation on distal radius fracture outcomes: A retrospective series  
*Meng H, Yan JZ, Wang B, Ma ZB, Kang WB, Liu BG*
- 7032** Case series of COVID-19 patients from the Qinghai-Tibetan Plateau Area in China  
*Li JJ, Zhang HQ, Li PJ, Xin ZL, Xi AQ, Zhuo-Ma, Ding YH, Yang ZP, Ma SQ*
- 7043** Patients' awareness about their own breast cancer characteristics  
*Geng C, Lu GJ, Zhu J, Li YY*
- 7053** Fracture risk assessment in children with benign bone lesions of long bones  
*Li HB, Ye WS, Shu Q*

## SYSTEMATIC REVIEWS

- 7062** Mothers' experiences of neonatal intensive care: A systematic review and implications for clinical practice  
*Wang LL, Ma JJ, Meng HH, Zhou J*

## META-ANALYSIS

- 7073** *Helicobacter pylori* infection and peptic ulcer disease in cirrhotic patients: An updated meta-analysis  
*Wei L, Ding HG*

## CASE REPORT

- 7085** Tuberous sclerosis complex-lymphangiomyomatosis involving several visceral organs: A case report  
*Chen HB, Xu XH, Yu CG, Wan MT, Feng CL, Zhao ZY, Mei DE, Chen JL*
- 7092** Long-term survivor of metastatic squamous-cell head and neck carcinoma with occult primary after cetuximab-based chemotherapy: A case report  
*Große-Thie C, Maletzki C, Junghanss C, Schmidt K*
- 7099** Genetic mutations associated with sensitivity to neoadjuvant chemotherapy in metastatic colon cancer: A case report and review of literature  
*Zhao L, Wang Q, Zhao SD, Zhou J, Jiang KW, Ye YJ, Wang S, Shen ZL*
- 7110** Coexistence of cervical extramedullary plasmacytoma and squamous cell carcinoma: A case report  
*Zhang QY, Li TC, Lin J, He LL, Liu XY*
- 7117** Reconstruction of the chest wall after resection of malignant peripheral nerve sheath tumor: A case report  
*Guo X, Wu WM, Wang L, Yang Y*
- 7123** A rare occurrence of a hereditary Birt-Hogg-Dubé syndrome: A case report  
*Lu YR, Yuan Q, Liu J, Han X, Liu M, Liu QQ, Wang YG*
- 7133** Late-onset Leigh syndrome without delayed development in China: A case report  
*Liang JM, Xin CJ, Wang GL, Wu XM*
- 7139** New mechanism of partial duplication and deletion of chromosome 8: A case report  
*Jiang Y, Tang S, He F, Yuan JX, Zhang Z*
- 7146** S-1 plus temozolomide as second-line treatment for neuroendocrine carcinoma of the breast: A case report  
*Wang X, Shi YF, Duan JH, Wang C, Tan HY*
- 7154** Minimally invasive treatment of hepatic hemangioma by transcatheter arterial embolization combined with microwave ablation: A case report  
*Wang LZ, Wang KP, Mo JG, Wang GY, Jin C, Jiang H, Feng YF*
- 7163** Progressive disfiguring facial masses with pupillary axis obstruction from Morbihan syndrome: A case report  
*Zhang L, Yan S, Pan L, Wu SF*

- 7169** Idiopathic basal ganglia calcification associated with new *MYORG* mutation site: A case report  
*Fei BN, Su HZ, Yao XP, Ding J, Wang X*
- 7175** Geleophysic dysplasia caused by a mutation in *FBN1*: A case report  
*Tao Y, Wei Q, Chen X, Nong GM*
- 7181** Combined laparoscopic-endoscopic approach for gastric glomus tumor: A case report  
*Wang WH, Shen TT, Gao ZX, Zhang X, Zhai ZH, Li YL*
- 7189** Aspirin-induced long-term tumor remission in hepatocellular carcinoma with adenomatous polyposis coli stop-gain mutation: A case report  
*Lin Q, Bai MJ, Wang HF, Wu XY, Huang MS, Li X*
- 7196** Prenatal diagnosis of isolated lateral facial cleft by ultrasonography and three-dimensional printing: A case report  
*Song WL, Ma HO, Nan Y, Li YJ, Qi N, Zhang LY, Xu X, Wang YY*
- 7205** Therapy-related myeloid leukemia during erlotinib treatment in a non-small cell lung cancer patient: A case report  
*Koo SM, Kim KU, Kim YK, Uh ST*
- 7212** Pediatric schwannoma of the tongue: A case report and review of literature  
*Yun CB, Kim YM, Choi JS, Kim JW*
- 7218** Status epilepticus as a complication after COVID-19 mRNA-1273 vaccine: A case report  
*Šin R, Štruncová D*
- 7224** Successful outcome of retrograde pancreatojejunostomy for chronic pancreatitis and infected pancreatic cysts: A case report  
*Kimura K, Adachi E, Toyohara A, Omori S, Ezaki K, Ihara R, Higashi T, Ohgaki K, Ito S, Maehara SI, Nakamura T, Maehara Y*
- 7231** Incidentally discovered asymptomatic splenic hamartoma misdiagnosed as an aneurysm: A case report  
*Cao XF, Yang LP, Fan SS, Wei Q, Lin XT, Zhang XY, Kong LQ*
- 7237** Secondary peripheral T-cell lymphoma and acute myeloid leukemia after Burkitt lymphoma treatment: A case report  
*Huang L, Meng C, Liu D, Fu XJ*
- 7245** Retroperitoneal bronchogenic cyst in suprarenal region treated by laparoscopic resection: A case report  
*Wu LD, Wen K, Cheng ZR, Alwalid O, Han P*
- 7251** Coexistent vestibular schwannoma and meningioma in a patient without neurofibromatosis: A case report and review of literature  
*Zhao LY, Jiang YN, Wang YB, Bai Y, Sun Y, Li YQ*
- 7261** Thoracoabdominal duplication with hematochezia as an onset symptom in a baby: A case report  
*Yang SB, Yang H, Zheng S, Chen G*

- 7269** Dental management of a patient with Moebius syndrome: A case report  
*Chen B, Li LX, Zhou LL*
- 7279** Epidural gas-containing pseudocyst leading to lumbar radiculopathy: A case report  
*Chen Y, Yu SD, Lu WZ, Ran JW, Yu KX*
- 7285** Regression of intervertebral disc calcification combined with ossification of the posterior longitudinal ligament: A case report  
*Wang XD, Su XJ, Chen YK, Wang WG*

**ABOUT COVER**

Editorial Board Member of *World Journal of Clinical Cases*, Vijaykumar Chava, MD, Professor, Department of Periodontology, Narayana Dental College and Hospital, Nellore 524003, Andhra Pradesh, India.  
chava7@hotmail.com

**AIMS AND SCOPE**

The primary aim of *World Journal of Clinical Cases* (WJCC, *World J Clin Cases*) is to provide scholars and readers from various fields of clinical medicine with a platform to publish high-quality clinical research articles and communicate their research findings online.

WJCC mainly publishes articles reporting research results and findings obtained in the field of clinical medicine and covering a wide range of topics, including case control studies, retrospective cohort studies, retrospective studies, clinical trials studies, observational studies, prospective studies, randomized controlled trials, randomized clinical trials, systematic reviews, meta-analysis, and case reports.

**INDEXING/ABSTRACTING**

The WJCC is now indexed in Science Citation Index Expanded (also known as SciSearch®), Journal Citation Reports/Science Edition, Scopus, PubMed, and PubMed Central. The 2021 Edition of Journal Citation Reports® cites the 2020 impact factor (IF) for WJCC as 1.337; IF without journal self cites: 1.301; 5-year IF: 1.742; Journal Citation Indicator: 0.33; Ranking: 119 among 169 journals in medicine, general and internal; and Quartile category: Q3. The WJCC's CiteScore for 2020 is 0.8 and Scopus CiteScore rank 2020: General Medicine is 493/793.

**RESPONSIBLE EDITORS FOR THIS ISSUE**

Production Editor: Ji-Hong Lin; Production Department Director: Yun-Jie Ma; Editorial Office Director: Jin-Lei Wang.

**NAME OF JOURNAL**

*World Journal of Clinical Cases*

**ISSN**

ISSN 2307-8960 (online)

**LAUNCH DATE**

April 16, 2013

**FREQUENCY**

Thrice Monthly

**EDITORS-IN-CHIEF**

Dennis A Bloomfield, Sandro Vento, Bao-Gan Peng

**EDITORIAL BOARD MEMBERS**

<https://www.wjgnet.com/2307-8960/editorialboard.htm>

**PUBLICATION DATE**

August 26, 2021

**COPYRIGHT**

© 2021 Baishideng Publishing Group Inc

**INSTRUCTIONS TO AUTHORS**

<https://www.wjgnet.com/bpg/gerinfo/204>

**GUIDELINES FOR ETHICS DOCUMENTS**

<https://www.wjgnet.com/bpg/GerInfo/287>

**GUIDELINES FOR NON-NATIVE SPEAKERS OF ENGLISH**

<https://www.wjgnet.com/bpg/gerinfo/240>

**PUBLICATION ETHICS**

<https://www.wjgnet.com/bpg/GerInfo/288>

**PUBLICATION MISCONDUCT**

<https://www.wjgnet.com/bpg/gerinfo/208>

**ARTICLE PROCESSING CHARGE**

<https://www.wjgnet.com/bpg/gerinfo/242>

**STEPS FOR SUBMITTING MANUSCRIPTS**

<https://www.wjgnet.com/bpg/GerInfo/239>

**ONLINE SUBMISSION**

<https://www.f6publishing.com>



## Idiopathic basal ganglia calcification associated with new MYORG mutation site: A case report

Bei-Ni Fei, Hui-Zhen Su, Xiang-Ping Yao, Jing Ding, Xin Wang

**ORCID number:** Bei-Ni Fei 0000-0001-9511-8172; Hui-Zhen Su 0000-0002-9507-0751; Xiang-Ping Yao 0000-0002-5145-3312; Jing Ding 0000-0001-5135-4210; Xin Wang 0000-0002-7251-9528.

**Author contributions:** Fei BN collected the clinical data and was the major contributor in writing the manuscript; Su HZ and Yao XP performed the genetic analysis; all authors read and approved the final manuscript; Ding J and Wang X were the patient's attending physicians and directed the writing of the article.

**Supported by** National Key R&D Program of China, No. 2018YFC1312900.

**Informed consent statement:** Written informed consent was obtained from the patient for the publication of any potentially identifiable images or data included in this article.

**Conflict-of-interest statement:** We declare that we have no competing interests.

**CARE Checklist (2016) statement:** The authors have read the CARE Checklist (2016), and the manuscript was prepared and revised according to the CARE Checklist (2016).

**Bei-Ni Fei, Jing Ding, Xin Wang,** Department of Neurology, Zhongshan Hospital, Fudan University, Shanghai 200032, China

**Hui-Zhen Su, Xiang-Ping Yao,** Department of Neurology and Institute of Neurology, First Affiliated Hospital, Fujian Medical University, Fuzhou 350108, Fujian Province, China

**Jing Ding, Xin Wang,** CAS Center for Excellence in Brain Science and Intelligence Technology, Shanghai 200032, China

**Corresponding author:** Jing Ding, MD, Doctor, Department of Neurology, Zhongshan Hospital, Fudan University, No. 180 Fenglin Road, Shanghai 200032, China. [ding.jing@zs-hospital.sh.cn](mailto:ding.jing@zs-hospital.sh.cn)

### Abstract

#### BACKGROUND

Idiopathic basal ganglia calcification (IBGC) is a neurodegenerative disease characterized by symmetrical calcification of basal ganglia and other brain region, also known as Fahr's disease. It can be sporadic or familial, and there is no definite etiology at present. With the development of neuroimaging, the number of reports of IBGC has increased in recent years. However, due to its hidden onset, diverse clinical manifestations, and low incidence, it is likely to be misdiagnosed or ignored by potential patients and their family.

#### CASE SUMMARY

We report a case of a 61-year-old man who presented with symptoms of dysphagia and alalia. His computed tomography scan of the brain revealed bilateral symmetric calcifications of basal ganglia, cerebellum, thalamus, and periventricular area. The genetic test showed a new mutation sites of MYORG, c.1438T>G mutation and c.1271\_1272 TGGTGC GC insertion mutation. He was finally diagnosed with IBGC.

#### CONCLUSION

It is important to detect MYORG mutation when IBGC is suspected, especially in those without an obvious family history, for better understanding of the underlying mechanism and identifying potential treatments.

**Key Words:** Idiopathic basal ganglia calcification; Fahr's disease; Gene; Point mutation; Inheritance; Case report



**Open-Access:** This article is an open-access article that was selected by an in-house editor and fully peer-reviewed by external reviewers. It is distributed in accordance with the Creative Commons Attribution NonCommercial (CC BY-NC 4.0) license, which permits others to distribute, remix, adapt, build upon this work non-commercially, and license their derivative works on different terms, provided the original work is properly cited and the use is non-commercial. See: <http://creativecommons.org/licenses/by-nc/4.0/>

**Manuscript source:** Unsolicited manuscript

**Specialty type:** Medicine, research and experimental

**Country/Territory of origin:** China

**Peer-review report's scientific quality classification**

Grade A (Excellent): 0  
Grade B (Very good): B, B  
Grade C (Good): 0  
Grade D (Fair): 0  
Grade E (Poor): 0

**Received:** January 11, 2021

**Peer-review started:** January 11, 2021

**First decision:** April 25, 2021

**Revised:** May 1, 2021

**Accepted:** July 5, 2021

**Article in press:** July 5, 2021

**Published online:** August 26, 2021

**P-Reviewer:** Tamune H

**S-Editor:** Fan JR

**L-Editor:** Filipodia

**P-Editor:** Wang LYT



©The Author(s) 2021. Published by Baishideng Publishing Group Inc. All rights reserved.

**Core Tip:** Idiopathic basal ganglia calcification (IBGC) is characterized by calcification of basal ganglia and other regions of the brain. IBGC is clinically heterogeneous and usually exhibits an autosomal dominant pattern of inheritance. We report a case of a 61-year-old man who presented with symptoms of dysphagia and alalia. His computed tomography scan of the brain revealed bilateral symmetric calcifications of basal ganglia, cerebellum, thalamus, and periventricular area. The genetic test showed a new mutation site of MYORG.

**Citation:** Fei BN, Su HZ, Yao XP, Ding J, Wang X. Idiopathic basal ganglia calcification associated with new MYORG mutation site: A case report. *World J Clin Cases* 2021; 9(24): 7169-7174

**URL:** <https://www.wjgnet.com/2307-8960/full/v9/i24/7169.htm>

**DOI:** <https://dx.doi.org/10.12998/wjcc.v9.i24.7169>

## INTRODUCTION

Idiopathic basal ganglia calcification (IBGC) is characterized by calcification of basal ganglia and other regions of the brain, commonly known as Fahr's disease[1]. IBGC is clinically heterogeneous and usually exhibits an autosomal dominant pattern of inheritance. Wang *et al*[2] discovered the first pathogenic gene of IBGC: *SLC20A2* in 2012. Three other IBGC pathogenic genes (*PDGFRB*[3], *PDGFB*[4], and *XPR1*[5]) were subsequently identified. In 2018, Yao *et al*[6] first reported that MYORG is a new pathogenic gene for IBGC with an autosomal-recessive trait. Here, we report a family with novel mutation sites of MYORG.

## CASE PRESENTATION

### Chief complaints

The patient is a 61-year-old man with the complaint of progressive severe dysphagia and alalia.

### History of present illness

Patient's symptoms started 4 years ago and were getting worse. He denied any headache, seizures, and psychiatric symptoms.

### History of past illness

Patient has hypertension for more than 10 years.

### Personal and family history

Patient's parents passed away in their sixties with unknown reason. He had an old brother and three old sisters, three of them died of unknown reason. The surviving sister is clinically asymptomatic but has calcifications on computed tomography (CT) scan (Figure 1A), and total calcification[7] score was 10. His three daughters were also asymptomatic and with normal CT scan. The pedigree chart is shown in Figure 2.

### Physical examination

The neurological examination was normal.

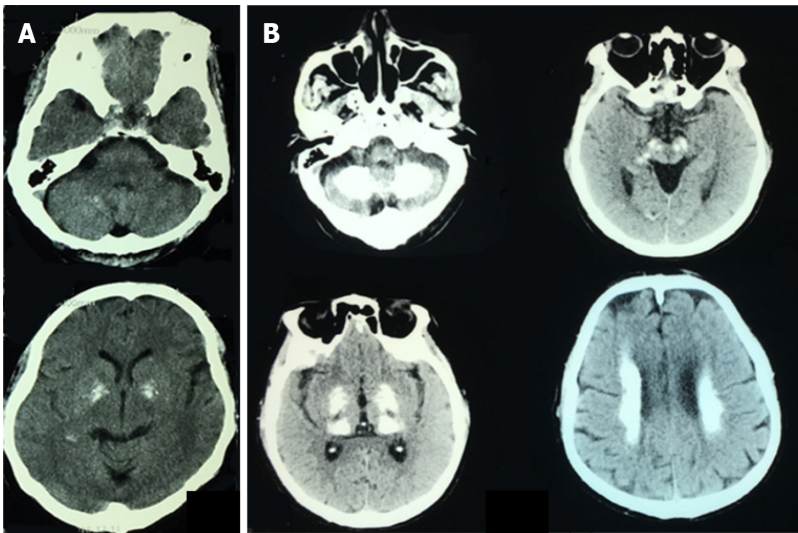
### Laboratory examinations

Laboratory tests, including serum calcium, phosphorus, and parathyroid hormone levels, were within normal limits (calcium 2.22 mmol/L, phosphorus 0.84 mmol/L, parathyroid hormone 37.5 ng/L).

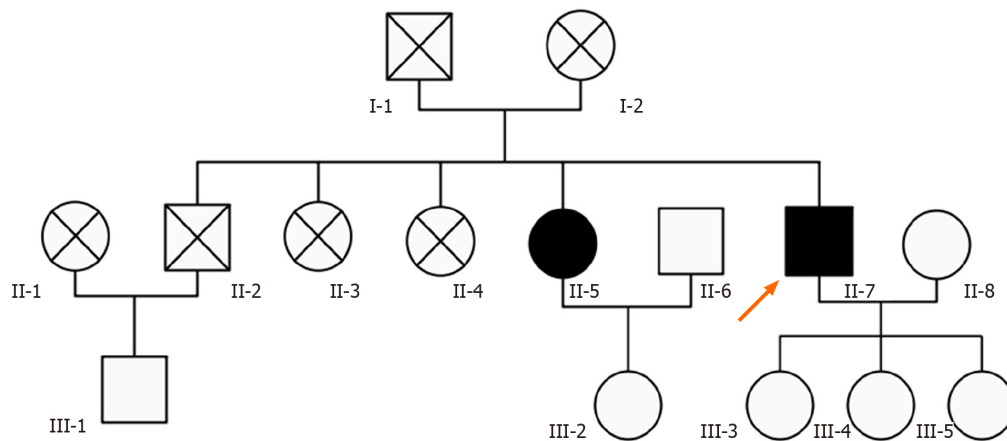
### Imaging examinations

Patient's CT scan revealed multiple symmetric calcifications of bilateral basal ganglia,





**Figure 1 Computed tomography.** A: Basal ganglia and cerebellum calcification of patient's sister; B: Patient's symmetric calcifications of bilateral basal ganglia, cerebellum, thalamus, and periventricular area.



**Figure 2 Pedigree.** The patients with idiopathic basal ganglia calcification are represented in black, unaffected individuals in white. The index patient is indicated by an arrow.

cerebellum, thalamus, and periventricular area (Figure 1B). Total calcification score was 54.

### Genetic tests

Genetic tests were done for the patient and his family. Excluding the dead and unreachable individuals, 7 people over two generations of the patient's family were investigated. The patient's genetic test showed c.1438T >G mutation and c.1271\_1272 TGGTGCGC insertion mutation in exon 2 of MYORG gene. Besides the patient, his sister and two of his daughter have MYORG c.1438T>G mutation, while one daughter has MYORG c.1271\_1272 TGGTGCGC insertion mutation (Table 1 and Figure 3).

## FINAL DIAGNOSIS

According to these laboratory tests and neuroimaging, he was diagnosed with IBGC.

## TREATMENT

Oxiracetam and nicergoline were given for neurotrophic treatments and improving cerebrovascular circulation.

Table 1 Clinical characteristics of pedigree

	II-5	II-7	II-8	III-1	III-3	III-4	III-5
Age at evaluation	66	61	61	51	36	34	32
Education level	II	II	II	III	IV	IV	IV
MMSE (/30)	27	26	28	29	30	30	30
MoCA (/30)	26	19	27	28	30	29	29
Clinic symptom	-	+	-	-	-	-	-
Calcifications on CT	+	+	-	-	-	-	-
Total calcification score	54	10	0	0	0	0	0
MYORG mutation	+	+	-	-	+	+	+
c.1438T>G mutation	-	+	-	-	-	-	+
c.1271_1272 TGGTGCGC insertion mutation	+	+	-	-	+	+	-

CT: Computed tomography; MMSE: Mini-mental state examination; MoCA: Montreal Cognitive Assessment.

## OUTCOME AND FOLLOW-UP

The symptoms were not approved with these agents.

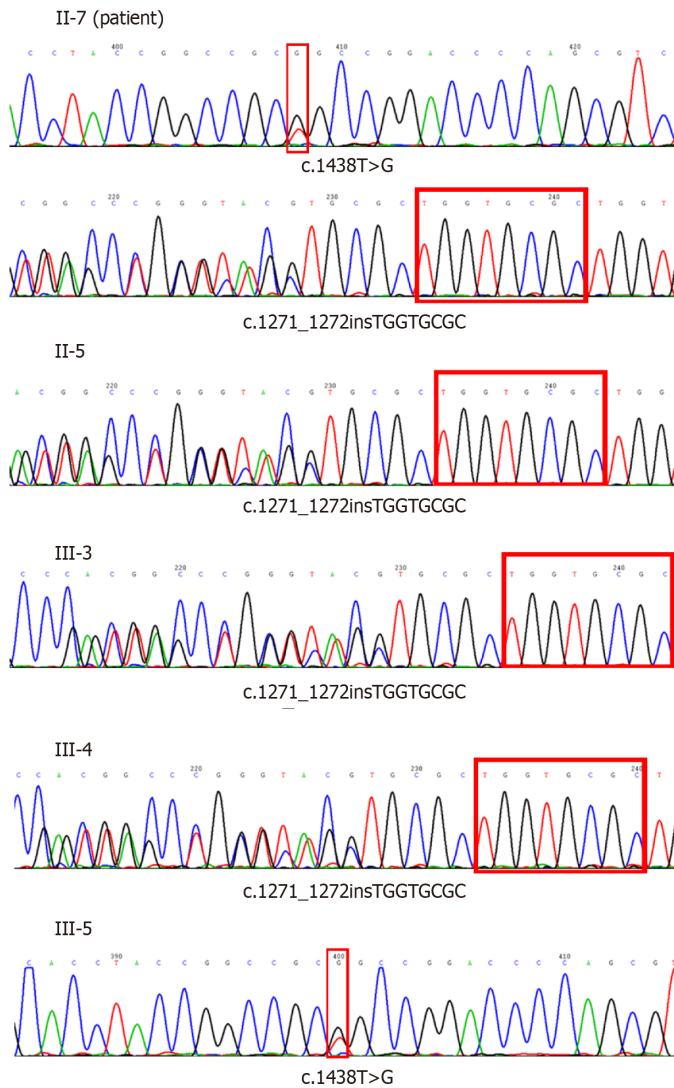
## DISCUSSION

IBGC is a hereditary disease of the nervous system. With the wide application of CT, the detection rate of IBGC becomes higher and higher. Most patients were healthy in the adolescent period. Even if characteristic calcification lesions had appeared in the head CT examination, there might not be obvious abnormal symptoms of the nervous system. Neuropsychiatric and motor disorders would gradually present in the middle-aged and elderly patients with progressive parkinsonism and spasticity.

In this pedigree, the patient had compound heterozygous mutations, one point mutation and one insertion mutation. His sister and daughters only had one mutation site, and they did not present with any symptoms. Some research found that homozygotes have more serious brain calcification, whereas with the heterozygous mutation, only punctated calcification was found in the globus pallidus. The clinical symptoms in homozygotes are various neurological symptoms, while heterozygotes are usually clinically asymptomatic[8]. Although the patient's sister and daughters are asymptomatic, they had the MYORG mutation. We suggested to them annual cranial CT scans, because with age the disease may progress and clinical symptoms may appear.

Previous studies reported that IBGC is inherited as an autosomal dominant disease [9,10] and identified *SLC20A2* coding for the phosphate transporter PiT2, *PDGFRB*<sup>3</sup> coding for the platelet derived growth factor receptor, as a cause of IBGC. However, *SLC20A2*, *PDGFRB*, *PDGFB*, and *XPR1* mutations were only detected in 16.8% of familial brain calcification. The underlying reason of IBGC remains unclear, especially in those without a prominent family history. In 2018, Yao *et al*[6] identified MYORG as the new recessive causal gene for IBGC, and reported 10 different mutation sites. Our patient and his family have MYORG novel mutation sites, c.1438T>G mutation and c.1271\_1272 TGGTGCGC insertion mutation, which have not been reported previously.

MYORG, also known as KIAA1161 or NET37, is located on chromosome 9p13.3. It encodes a protein containing 714 amino acids, which is a member of the glycosylase 31 family. MYORG gene was specifically expressed in S100b positive astrocytes. Bilateral symmetrical nodules of cerebral calcification were observed in MYORG knockout mice. The main components of calcium nodules were calcium and phosphorus, which were highly similar to the elements of brain calcification in clinical patients, which proved that MYORG autosomal recessive function deletion mutation was an important pathogenic gene of IBGC. The mutation of this gene causes dysfunction of astrocytes, which may affect the combination of astrocytes and pericytes, interfere with the



**Figure 3 Gene sequencing.** II-7 (patient) has c.1438T>G mutation and c.1271\_1272 TGGTGCGC insertion mutation. II-5, III-3 and III-4 has c.1271\_1272 TGGTGCGC insertion mutation. III-5 has c.1438T>G mutation.

normal function of neurovascular unit, and finally may lead to the calcification of the brain. According to the clinical manifestations, Chen *et al*[11] found that 76.5% patients with MYORG mutation were symptomatic, and the most recurrent symptom was movement disorder. Our patient's manifestation was progressive dysphagia and alalia.

## CONCLUSION

Since many patients will exhibit a progressive neurological disorder with no known treatment, it is important to detect MYORG mutation, especially in those without obvious family history, for better understanding the underlying mechanism and identifying potential treatments.

## REFERENCES

- 1 Manyam BV. What is and what is not 'Fahr's disease'. *Parkinsonism Relat Disord* 2005; **11**: 73-80 [PMID: 15734663 DOI: 10.1016/j.parkreldis.2004.12.001]
- 2 Wang C, Li Y, Shi L, Ren J, Patti M, Wang T, de Oliveira JR, Sobrido MJ, Quintáns B, Baquero M, Cui X, Zhang XY, Wang L, Xu H, Wang J, Yao J, Dai X, Liu J, Zhang L, Ma H, Gao Y, Ma X, Feng S, Liu M, Wang QK, Forster IC, Zhang X, Liu JY. Mutations in SLC20A2 link familial idiopathic basal ganglia calcification with phosphate homeostasis. *Nat Genet* 2012; **44**: 254-256 [PMID: 22411111 DOI: 10.1038/ng.1200]

- 22327515 DOI: [10.1038/ng.1077](https://doi.org/10.1038/ng.1077)]
- 3 **Nicolas G**, Pottier C, Maltête D, Coutant S, Rovelet-Lecrux A, Legalle S, Rousseau S, Vaschalde Y, Guyant-Maréchal L, Augustin J, Martinaud O, Defebvre L, Krystkowiak P, Pariente J, Clanet M, Labauge P, Aygnac X, Lefaucheur R, Le Ber I, Frébourg T, Hannequin D, Campion D. Mutation of the PDGFRB gene as a cause of idiopathic basal ganglia calcification. *Neurology* 2013; **80**: 181-187 [PMID: [23255827](https://pubmed.ncbi.nlm.nih.gov/23255827/) DOI: [10.1212/WNL.0b013e31827ccf34](https://doi.org/10.1212/WNL.0b013e31827ccf34)]
- 4 **Keller A**, Westenberger A, Sobrido MJ, García-Murias M, Domingo A, Sears RL, Lemos RR, Ordoñez-Ugalde A, Nicolas G, da Cunha JE, Rushing EJ, Hugelshofer M, Wurnig MC, Kaech A, Reimann R, Lohmann K, Dobričić V, Carracedo A, Petrović I, Miyasaki JM, Abakumova I, Mäe MA, Raschperger E, Zatz M, Zschiedrich K, Klepper J, Spiteri E, Prieto JM, Navas I, Preuss M, Dering C, Janković M, Paucar M, Svenningsson P, Saliminejad K, Khorshid HR, Novaković I, Aguzzi A, Boss A, Le Ber I, Defer G, Hannequin D, Kostić VS, Campion D, Geschwind DH, Coppola G, Betsholtz C, Klein C, Oliveira JR. Mutations in the gene encoding PDGF-B cause brain calcifications in humans and mice. *Nat Genet* 2013; **45**: 1077-1082 [PMID: [23913003](https://pubmed.ncbi.nlm.nih.gov/23913003/) DOI: [10.1038/ng.2723](https://doi.org/10.1038/ng.2723)]
- 5 **Legati A**, Giovannini D, Nicolas G, López-Sánchez U, Quintáns B, Oliveira JR, Sears RL, Ramos EM, Spiteri E, Sobrido MJ, Carracedo A, Castro-Fernández C, Cubizolle S, Fogel BL, Goizet C, Jen JC, Kirdlarp S, Lang AE, Miedzybrodzka Z, Mitarnun W, Paucar M, Paulson H, Pariente J, Richard AC, Salins NS, Simpson SA, Striano P, Svenningsson P, Tison F, Unni VK, Vanakker O, Wessels MW, Wetchaphanphesat S, Yang M, Boller F, Campion D, Hannequin D, Sitbon M, Geschwind DH, Battini JL, Coppola G. Mutations in XPR1 cause primary familial brain calcification associated with altered phosphate export. *Nat Genet* 2015; **47**: 579-581 [PMID: [25938945](https://pubmed.ncbi.nlm.nih.gov/25938945/) DOI: [10.1038/ng.3289](https://doi.org/10.1038/ng.3289)]
- 6 **Yao XP**, Cheng X, Wang C, Zhao M, Guo XX, Su HZ, Lai LL, Zou XH, Chen XJ, Zhao Y, Dong EL, Lu YQ, Wu S, Li X, Fan G, Yu H, Xu J, Wang N, Xiong ZQ, Chen WJ. Biallelic Mutations in MYORG Cause Autosomal Recessive Primary Familial Brain Calcification. *Neuron* 2018; **98**: 1116-1123.e5 [PMID: [29910000](https://pubmed.ncbi.nlm.nih.gov/29910000/) DOI: [10.1016/j.neuron.2018.05.037](https://doi.org/10.1016/j.neuron.2018.05.037)]
- 7 **Nicolas G**, Pottier C, Charbonnier C, Guyant-Maréchal L, Le Ber I, Pariente J, Labauge P, Aygnac X, Defebvre L, Maltête D, Martinaud O, Lefaucheur R, Guillin O, Wallon D, Chaumette B, Rondepierre P, Derache N, Fromager G, Schaeffer S, Krystkowiak P, Verny C, Jurici S, Sauvée M, Vêrin M, Lebouvier T, Rouaud O, Thauvin-Robinet C, Rousseau S, Rovelet-Lecrux A, Frébourg T, Campion D, Hannequin D; French IBGC Study Group. Phenotypic spectrum of probable and genetically-confirmed idiopathic basal ganglia calcification. *Brain* 2013; **136**: 3395-3407 [PMID: [24065723](https://pubmed.ncbi.nlm.nih.gov/24065723/) DOI: [10.1093/brain/awt255](https://doi.org/10.1093/brain/awt255)]
- 8 **Bauer M**, Rahat D, Zisman E, Tabach Y, Lossos A, Meiner V, Arkadir D. MYORG Mutations: a Major Cause of Recessive Primary Familial Brain Calcification. *Curr Neurol Neurosci Rep* 2019; **19**: 70 [PMID: [31440850](https://pubmed.ncbi.nlm.nih.gov/31440850/) DOI: [10.1007/s11910-019-0986-z](https://doi.org/10.1007/s11910-019-0986-z)]
- 9 **Volpato CB**, De Grandi A, Buffone E, Facheris M, Gebert U, Schifferle G, Schönhuber R, Hicks A, Pramstaller PP. 2q37 as a susceptibility locus for idiopathic basal ganglia calcification (IBGC) in a large South Tyrolean family. *J Mol Neurosci* 2009; **39**: 346-353 [PMID: [19757205](https://pubmed.ncbi.nlm.nih.gov/19757205/) DOI: [10.1007/s12031-009-9287-3](https://doi.org/10.1007/s12031-009-9287-3)]
- 10 **Dai X**, Gao Y, Xu Z, Cui X, Liu J, Li Y, Xu H, Liu M, Wang QK, Liu JY. Identification of a novel genetic locus on chromosome 8p21.1-q11.23 for idiopathic basal ganglia calcification. *Am J Med Genet B Neuropsychiatr Genet* 2010; **153B**: 1305-1310 [PMID: [20552677](https://pubmed.ncbi.nlm.nih.gov/20552677/) DOI: [10.1002/ajmg.b.31102](https://doi.org/10.1002/ajmg.b.31102)]
- 11 **Chen Y**, Fu F, Chen S, Cen Z, Tang H, Huang J, Xie F, Zheng X, Yang D, Wang H, Huang X, Zhang Y, Zhou Y, Liu JY, Luo W. Evaluation of MYORG mutations as a novel cause of primary familial brain calcification. *Mov Disord* 2019; **34**: 291-297 [PMID: [30589467](https://pubmed.ncbi.nlm.nih.gov/30589467/) DOI: [10.1002/mds.27582](https://doi.org/10.1002/mds.27582)]



Published by **Baishideng Publishing Group Inc**  
7041 Koll Center Parkway, Suite 160, Pleasanton, CA 94566, USA

**Telephone:** +1-925-3991568

**E-mail:** [bpgoffice@wjgnet.com](mailto:bpgoffice@wjgnet.com)

**Help Desk:** <https://www.f6publishing.com/helpdesk>

<https://www.wjgnet.com>

