

World Journal of *Clinical Cases*

World J Clin Cases 2021 October 6; 9(28): 8280-8626



Contents

Thrice Monthly Volume 9 Number 28 October 6, 2021

REVIEW

- 8280** Transmission of severe acute respiratory syndrome coronavirus 2 *via* fecal-oral: Current knowledge
Silva FAFD, de Brito BB, Santos MLC, Marques HS, da Silva Júnior RT, de Carvalho LS, de Sousa Cruz S, Rocha GR, Correa Santos GL, de Souza KC, Maciel RGA, Lopes DS, Silva NOE, Oliveira MV, de Melo FF
- 8295** Nutrition, nutritional deficiencies, and schizophrenia: An association worthy of constant reassessment
Onaolapo OJ, Onaolapo AY

MINIREVIEWS

- 8312** Grounded theory qualitative approach from Foucault's ethical perspective: Deconstruction of patient self-determination in the clinical setting
Molina-Mula J
- 8327** Diabetes mellitus and COVID-19: Understanding the association in light of current evidence
Sen S, Chakraborty R, Kalita P, Pathak MP

ORIGINAL ARTICLE

Case Control Study

- 8340** Pregnancy complications effect on the nickel content in maternal blood, placenta blood and umbilical cord blood during pregnancy
Ding AL, Hu H, Xu FP, Liu LY, Peng J, Dong XD

Retrospective Study

- 8349** Clinical observation of Kuntai capsule combined with Fenmotong in treatment of decline of ovarian reserve function
Lin XM, Chen M, Wang QL, Ye XM, Chen HF
- 8358** Short-term effect and long-term prognosis of neuroendoscopic minimally invasive surgery for hypertensive intracerebral hemorrhage
Wei JH, Tian YN, Zhang YZ, Wang XJ, Guo H, Mao JH
- 8366** Ultrasonographic assessment of cardiac function and disease severity in coronary heart disease
Zhang JF, Du YH, Hu HY, Han XQ
- 8374** COVID-19 among African Americans and Hispanics: Does gastrointestinal symptoms impact the outcome?
Ashktorab H, Folake A, Pizuorno A, Oskrochi G, Oppong-Twene P, Tamanna N, Mehdipour Dalivand M, Umeh LN, Moon ES, Kone AM, Banson A, Federman C, Ramos E, Awoyemi EO, Wonni BJ, Otto E, Maskalo G, Velez AO, Rankine S, Thrift C, Ekwunazu C, Scholes D, Chirumamilla LG, Ibrahim ME, Mitchell B, Ross J, Curtis J, Kim R, Gilliard C, Mathew J, Laiyemo A, Kibreab A, Lee E, Sherif Z, Shokrani B, Aduli F, Brim H

Observational Study

- 8388** Validated tool for early prediction of intensive care unit admission in COVID-19 patients
Huang HF, Liu Y, Li JX, Dong H, Gao S, Huang ZY, Fu SZ, Yang LY, Lu HZ, Xia LY, Cao S, Gao Y, Yu XX
- 8404** Comparison of the impact of endoscopic retrograde cholangiopancreatography between pre-COVID-19 and current COVID-19 outbreaks in South Korea: Retrospective survey
Kim KH, Kim SB

Randomized Controlled Trial

- 8413** Effect of family caregiver nursing education on patients with rheumatoid arthritis and its impact factors: A randomized controlled trial
Li J, Zhang Y, Kang YJ, Ma N

SYSTEMATIC REVIEWS

- 8425** Dealing with hepatic artery traumas: A clinical literature review
Dilek ON, Atay A
- 8441** Clinical considerations for critically ill COVID-19 cancer patients: A systematic review
Ramasamy C, Mishra AK, John KJ, Lal A

CASE REPORT

- 8453** Atypical granular cell tumor of the urinary bladder: A case report
Wei MZ, Yan ZJ, Jiang JH, Jia XL
- 8461** Hepatocyte nuclear factor 1B mutation in a Chinese family with renal cysts and diabetes syndrome: A case report
Xiao TL, Zhang J, Liu L, Zhang B
- 8470** Ultrasound features of primary non-Hodgkin's lymphoma of the palatine tonsil: A case report
Jiang R, Zhang HM, Wang LY, Pian LP, Cui XW
- 8476** Percutaneous drainage in the treatment of intrahepatic pancreatic pseudocyst with Budd-Chiari syndrome: A case report
Zhu G, Peng YS, Fang C, Yang XL, Li B
- 8482** Postmenopausal women with hyperandrogenemia: Three case reports
Zhu XD, Zhou LY, Jiang J, Jiang TA
- 8492** Extremely high titer of hepatitis B surface antigen antibodies in a primary hepatocellular carcinoma patient: A case report
Han JJ, Chen Y, Nan YC, Yang YL
- 8498** Surgical treatment of liver metastasis with uveal melanoma: A case report
Kim YH, Choi NK

- 8504** Intermittent appearance of right coronary fistula and collateral circulation: A case report
Long WJ, Huang X, Lu YH, Huang HM, Li GW, Wang X, He ZL
- 8509** Synchronous concomitant pancreatic acinar cell carcin and gastric adenocarcinoma: A case report and review of literature
Fang T, Liang TT, Wang YZ, Wu HT, Liu SH, Wang C
- 8518** Spontaneous resolution of gallbladder hematoma in blunt traumatic injury: A case report
Jang H, Park CH, Park Y, Jeong E, Lee N, Kim J, Jo Y
- 8524** Rupture of ovarian endometriotic cyst complicated with endometriosis: A case report
Wang L, Jiang YJ
- 8531** Rotarex mechanical thrombectomy in renal artery thrombosis: A case report
Li WR, Liu MY, Chen XM, Zhang ZW
- 8537** Necrotizing fasciitis of cryptoglandular infection treated with multiple incisions and thread-dragging therapy: A case report
Tao XC, Hu DC, Yin LX, Wang C, Lu JG
- 8545** Endoscopic joint capsule and articular process excision to treat lumbar facet joint syndrome: A case report
Yuan HJ, Wang CY, Wang YF
- 8552** Spinocerebellar ataxia type 3 with dopamine-responsive dystonia: A case report
Zhang XL, Li XB, Cheng FF, Liu SL, Ni WC, Tang FF, Wang QG, Wang XQ
- 8557** Disseminated soft tissue diffuse large B-cell lymphoma involving multiple abdominal wall muscles: A case report
Lee CH, Jeon SY, Yhim HY, Kwak JY
- 8563** Genetic characteristics of a patient with multiple primary cancers: A case report
Ouyang WW, Li QY, Yang WG, Su SF, Wu LJ, Yang Y, Lu B
- 8571** Hypereosinophilia with cerebral venous sinus thrombosis and intracerebral hemorrhage: A case report and review of the literature
Song XH, Xu T, Zhao GH
- 8579** Itraconazole therapy for infant hemangioma: Two case reports
Liu Z, Lv S, Wang S, Qu SM, Zhang GY, Lin YT, Yang L, Li FQ
- 8587** One-stage total hip arthroplasty for advanced hip tuberculosis combined with developmental dysplasia of the hip: A case report
Zhu RT, Shen LP, Chen LL, Jin G, Jiang HT
- 8595** *Pneumocystis jirovecii* and *Legionella pneumophila* coinfection in a patient with diffuse large B-cell lymphoma: A case report
Wu WH, Hui TC, Wu QQ, Xu CA, Zhou ZW, Wang SH, Zheng W, Yin QQ, Li X, Pan HY

- 8602** Delayed massive cerebral infarction after perioperative period of anterior cervical discectomy and fusion: A case report
Jia F, Du CC, Liu XG
- 8609** Cortical bone trajectory fixation in cemented vertebrae in lumbar degenerative disease: A case report
Chen MM, Jia P, Tang H
- 8616** Primary intramedullary melanocytoma presenting with lower limbs, defecation, and erectile dysfunction: A case report and review of the literature
Liu ZQ, Liu C, Fu JX, He YQ, Wang Y, Huang TX

ABOUT COVER

Editorial Board Member of *World Journal of Clinical Cases*, Domenico De Berardis, MD, PhD, Adjunct Professor, Chief Doctor, NHS, Department of Mental Health, Teramo 64100, Italy. domenico.deberardis@aslteramo.it

AIMS AND SCOPE

The primary aim of *World Journal of Clinical Cases* (WJCC, *World J Clin Cases*) is to provide scholars and readers from various fields of clinical medicine with a platform to publish high-quality clinical research articles and communicate their research findings online.

WJCC mainly publishes articles reporting research results and findings obtained in the field of clinical medicine and covering a wide range of topics, including case control studies, retrospective cohort studies, retrospective studies, clinical trials studies, observational studies, prospective studies, randomized controlled trials, randomized clinical trials, systematic reviews, meta-analysis, and case reports.

INDEXING/ABSTRACTING

The WJCC is now indexed in Science Citation Index Expanded (also known as SciSearch®), Journal Citation Reports/Science Edition, Scopus, PubMed, and PubMed Central. The 2021 Edition of Journal Citation Reports® cites the 2020 impact factor (IF) for WJCC as 1.337; IF without journal self cites: 1.301; 5-year IF: 1.742; Journal Citation Indicator: 0.33; Ranking: 119 among 169 journals in medicine, general and internal; and Quartile category: Q3. The WJCC's CiteScore for 2020 is 0.8 and Scopus CiteScore rank 2020: General Medicine is 493/793.

RESPONSIBLE EDITORS FOR THIS ISSUE

Production Editor: Yan-Xia Xing; Production Department Director: Yun-Jie Ma; Editorial Office Director: Jin-Lei Wang.

NAME OF JOURNAL

World Journal of Clinical Cases

ISSN

ISSN 2307-8960 (online)

LAUNCH DATE

April 16, 2013

FREQUENCY

Thrice Monthly

EDITORS-IN-CHIEF

Dennis A Bloomfield, Sandro Vento, Bao-Gan Peng

EDITORIAL BOARD MEMBERS

<https://www.wjgnet.com/2307-8960/editorialboard.htm>

PUBLICATION DATE

October 6, 2021

COPYRIGHT

© 2021 Baishideng Publishing Group Inc

INSTRUCTIONS TO AUTHORS

<https://www.wjgnet.com/bpg/gerinfo/204>

GUIDELINES FOR ETHICS DOCUMENTS

<https://www.wjgnet.com/bpg/GerInfo/287>

GUIDELINES FOR NON-NATIVE SPEAKERS OF ENGLISH

<https://www.wjgnet.com/bpg/gerinfo/240>

PUBLICATION ETHICS

<https://www.wjgnet.com/bpg/GerInfo/288>

PUBLICATION MISCONDUCT

<https://www.wjgnet.com/bpg/gerinfo/208>

ARTICLE PROCESSING CHARGE

<https://www.wjgnet.com/bpg/gerinfo/242>

STEPS FOR SUBMITTING MANUSCRIPTS

<https://www.wjgnet.com/bpg/GerInfo/239>

ONLINE SUBMISSION

<https://www.f6publishing.com>

Transmission of severe acute respiratory syndrome coronavirus 2 via fecal-oral: Current knowledge

Filipe Antônio França da Silva, Breno Bittencourt de Brito, Maria Luísa Cordeiro Santos, Hanna Santos Marques, Ronaldo Teixeira da Silva Júnior, Lorena Sousa de Carvalho, Samuel de Sousa Cruz, Gabriel Reis Rocha, Gabriel Lima Correa Santos, Kathlen Coutinho de Souza, Rebeca Gabrielle Almeida Maciel, Daiana Silva Lopes, Natália Oliveira e Silva, Márcio Vasconcelos Oliveira, Fabrício Freire de Melo

ORCID number: Filipe Antônio França da Silva 0000-0002-0550-1109; Breno Bittencourt de Brito 0000-0002-1831-7909; Maria Luísa Cordeiro Santos 0000-0001-7078-9789; Hanna Santos Marques 0000-0001-5741-1570; Ronaldo Teixeira da Silva Júnior 0000-0003-0835-4092; Lorena Sousa de Carvalho 0000-0003-1876-9240; Samuel de Sousa Cruz 0000-0002-2398-5434; Gabriel Reis Rocha 0000-0002-3090-0726; Gabriel Lima Correa Santos 0000-0003-3673-9889; Kathlen Coutinho de Souza 0000-0001-6448-2780; Rebeca Gabrielle Almeida Maciel 0000-0002-1492-9668; Daiana Silva Lopes 0000-0002-2462-4163; Natália Oliveira e Silva 0000-0003-0106-7509; Márcio Vasconcelos Oliveira 0000-0002-8959-0478; Fabrício Freire de Melo 0000-0002-5680-2753.

Author contributions: da Silva FAF contributed to conceptualization, methodology, investigation, and writing the original draft; de Brito BB, Santos MLC, Marques HS, Júnior RTS, de Carvalho LS, Cruz SS, Rocha GR, Santos GLC, de Souza KC, and Maciel RGA contributed to investigation and writing the original draft; Silva Lopes DS, e Silva NO, and Oliveira MV contributed to formal analysis, investigation, and supervision; de Melo FF contributed to

Filipe Antônio França da Silva, Breno Bittencourt de Brito, Maria Luísa Cordeiro Santos, Ronaldo Teixeira da Silva Júnior, Lorena Sousa de Carvalho, Samuel de Sousa Cruz, Gabriel Reis Rocha, Gabriel Lima Correa Santos, Kathlen Coutinho de Souza, Rebeca Gabrielle Almeida Maciel, Natália Oliveira e Silva, Márcio Vasconcelos Oliveira, Instituto Multidisciplinar em Saúde, Universidade Federal da Bahia, Vitória da Conquista 45002175, Bahia, Brazil

Hanna Santos Marques, Departamento de Ciências Naturais, Universidade Estadual do Sudoeste da Bahia, Vitória da Conquista 45002175, Bahia, Brazil

Daiana Silva Lopes, Departamento de Bioquímica e Biofísica, Universidade Federal da Bahia, Salvador 40.110-100, Bahia, Brazil

Fabrício Freire de Melo, Instituto Multidisciplinar em Saúde, Universidade Federal da Bahia, Vitória da Conquista 45029-094, Bahia, Brazil

Corresponding author: Fabrício Freire de Melo, MSc, PhD, Postdoc, Professor, Instituto Multidisciplinar em Saúde, Universidade Federal da Bahia, Rua Hormindo Barros, 58, Quadra 17, Lote 58 - Candeias, Vitória da Conquista - BA, 45029-094, Vitória da Conquista 45029-094, Bahia, Brazil. freiremelo@yahoo.com.br

Abstract

The pandemic caused by severe acute respiratory syndrome coronavirus 2 (SARS-CoV-2) has resulted in more than 93 million cases and 2 million deaths in the world. SARS-CoV-2 respiratory tract infection and its main clinical manifestations such as cough and shortness of breath are well known to the scientific community. However, a growing number of studies have reported SARS-CoV-2-related gastrointestinal involvement based on clinical manifestations, such as diarrhea, nausea, vomiting, and abdominal pain as well as on the pathophysiological mechanisms associated with coronavirus disease 2019. Furthermore, current evidence suggests SARS-CoV-2 transmission *via* the fecal-oral route and aerosol dissemination. Moreover, studies have shown a high risk of contamination through hospital surfaces and personal fomites. Indeed, viable SARS-CoV-2 specimens can be obtained from aerosols, which raises the possibility of transmission through aerosolized viral particles from feces. Therefore, the infection by SARS-CoV-2 *via* fecal-oral route or aerosolized particles should be

conceptualization, methodology, formal analysis, investigation, and supervision.

Conflict-of-interest statement:

There is no conflict of interest associated with any of the senior author or other coauthors contributed their efforts in this manuscript.

Open-Access: This article is an open-access article that was selected by an in-house editor and fully peer-reviewed by external reviewers. It is distributed in accordance with the Creative Commons Attribution NonCommercial (CC BY-NC 4.0) license, which permits others to distribute, remix, adapt, build upon this work non-commercially, and license their derivative works on different terms, provided the original work is properly cited and the use is non-commercial. See: <http://creativecommons.org/licenses/by-nc/4.0/>

Manuscript source: Invited manuscript

Specialty type: Infectious diseases

Country/Territory of origin: Brazil

Peer-review report's scientific quality classification

Grade A (Excellent): A
Grade B (Very good): B
Grade C (Good): 0
Grade D (Fair): 0
Grade E (Poor): 0

Received: January 26, 2021

Peer-review started: January 26, 2021

First decision: June 4, 2021

Revised: June 15, 2021

Accepted: August 23, 2021

Article in press: August 23, 2021

Published online: October 6, 2021

P-Reviewer: Navarro-Alvarez N, Poddighe D

S-Editor: Ma YJ

L-Editor: Filipodia

P-Editor: Li JH



considered. In addition, a possible viral spread to sources of drinking water, sewage, and rivers as well as the possible risk of viral transmission in shared toilets become a major public health concern, especially in the least developed countries. Since authors have emphasized the presence of viral RNA and even viable SARS-CoV-2 in human feces, studies on the possible fecal-oral coronavirus disease 2019 transmission become essential to understand better the dynamics of its transmission and, then, to reinforce preventive measures against this infection, leading to a more satisfactory control of the incidence of the infection.

Key Words: COVID-19; SARS-CoV-2, Transmission; *Via* fecal-oral

©The Author(s) 2021. Published by Baishideng Publishing Group Inc. All rights reserved.

Core Tip: The pandemic caused by severe acute respiratory syndrome coronavirus 2 has become a global health problem. Transmission *via* the respiratory tract and the clinical manifestations related to that organ system are well known to the scientific community. In addition, current knowledge about the viral infection strongly suggests a possible transmission of the severe acute respiratory syndrome coronavirus 2 *via* the fecal-oral route. In addition, a possible spread of the virus to sources of drinking water, sewage, and rivers as well as the possibility of viral transmission in shared toilets become a major public health problem, especially in underdeveloped countries.

Citation: Silva FAFD, de Brito BB, Santos MLC, Marques HS, da Silva Júnior RT, de Carvalho LS, de Sousa Cruz S, Rocha GR, Correa Santos GL, de Souza KC, Maciel RGA, Lopes DS, Silva NOE, Oliveira MV, de Melo FF. Transmission of severe acute respiratory syndrome coronavirus 2 *via* fecal-oral: Current knowledge. *World J Clin Cases* 2021; 9(28): 8280-8294

URL: <https://www.wjgnet.com/2307-8960/full/v9/i28/8280.htm>

DOI: <https://dx.doi.org/10.12998/wjcc.v9.i28.8280>

INTRODUCTION

In December 2019, cases of pneumonia of unknown etiology were reported in Wuhan, China. The disease would be later named corona virus disease 2019 (COVID-19), and researchers found that it is caused by the severe acute respiratory syndrome coronavirus 2 (SARS-CoV-2)[1]. According to the World Health Organization, from the beginning of the pandemic to the writing of this article, more than 93 million cases and 2 million deaths were reported globally[2]. The SARS-CoV-2 belongs to the β -genus of the Coronaviridae family. Its main target is the human respiratory system, and its transmission occurs mainly with personal contact through droplets originated from infected individuals. Droplet transmission involves exposure of an entry point such as mucosa or conjunctiva to potentially infectious particles[3,4]. This infection classically involves respiratory tract symptoms such as dry cough and shortness of breath as well as associated fever, myalgia, myalgia, and fatigue[5]. The patients can also present with gastrointestinal (GI) manifestations, including diarrhea, nausea, abdominal pain, and GI bleeding[6,7]. Interestingly, in January 2020, the first COVID-19 case in the Americas presented with diarrhea. Stools were collected from the patient, underwent analyses, and were later found to be positive for SARS-CoV-2 RNA through reverse transcriptase polymerase chain reaction (RT-PCR) test[8].

The angiotensin-converting enzyme type 2 (ACE2) receptor, which is expressed in alveolar[9], gastric, and rectal epithelial cells as well as in enterocytes from the small intestine[10,11], seems to play a crucial role in the infection pathogenesis[12,13]. Viral binding to ACE2 allows SARS-CoV-2 to enter host cells[14]. In addition, the viral presence in the feces of infected patients or asymptomatic people indicates a possible fecal-oral transmission route[11]. Studies have shown that the ACE2 receptor may contribute to this route, allowing the occurrence of GI infection. The colonization of the GIT *via* ACE2 may lead to viral spread through stools, which may or may not be preceded by the onset of diarrhea and occur before or after respiratory tract-related clinical manifestations[15,16]. RT-PCR tests of rectal and anal swabs collected from pediatric patients were positive within 10 d after hospital discharge following mild

COVID-19, even after patients turned asymptomatic and RT-PCR from nasopharyngeal samples were negative[17]. In asymptomatic adult patients, there was viral detection in the stools for up to 42 d as well, whereas nasopharyngeal samples were negative, showing a possible GI involvement regardless of the occurrence of respiratory complaints[18]. In this sense, it has to be emphasized the possible significant implications of this potential transmission route and the possibility of its use for early identification of the SARS-CoV-2 infection as well.

THEORY FOR PATHOPHYSIOLOGY OF GI TRACT INFECTION AND LIVER AND GI SYMPTOMS

Pathophysiology of GI tract infection

The way SARS-CoV-2 infects GI tract (GIT) remains unclear. Of note, there is an evident genetic similarity between this virus and the SARS-CoV (70%), which infects the human body by attaching to the ACE2. Therefore, researchers hypothesized that this receptor could also play a role in SARS-CoV-2 manifestations[19]. Indeed, ACE2 was subsequently identified as the operative receptor of SARS-CoV-2, and, since it is distributed throughout almost all organs, including the small intestine, colon, rectum, and liver epithelia, this receptor may explain the viral presence in the GIT[20,21]. Besides ACE2, serine protease TMPRSS2 seems to be important in the SARS-CoV-2 infection[22]. That enzyme activates the S protein, which facilitates the entry of the virus into cells through the action of its two subunits, S1 and S2. The S1 unit is responsible for binding cell receptors, whereas S2 promotes the fusion between viral and cell membranes[23]. Therefore, the virus depends on both ACE2 and TMPRSS2 to invade host cells[24], as illustrated in Figure 1.

The pathophysiology in humans is not yet fully understood. Because clinical studies in humans are scarce, many experimental studies have been performed with mice. A study showed that a decrease in the levels of tryptophan absorption might be associated with the pathophysiology of the intestinal infection by SARS-CoV-2 in a murine model. This phenomenon can be explained by the need for ACE2 activation for the absorption of the aforementioned amino acid and the competitive binding of the receptor by the SARS-CoV-2. The mice that underwent the infection had an imbalance in their intestinal microbiota and a higher susceptibility to develop colitis, a condition that has been reversed with the administration of glycine tryptophan dipeptide during the study[25].

Another phenomenon that may contribute to the worsening of COVID-19 is the “cytokine storm”, an exacerbated expression of pro-inflammatory cytokines. Studies have observed higher levels of cytokines including interleukin (IL)1B, IL1RA, IL2, IL6, IL7, IL8, IL9, IL12p70, IL15, IL17A, interferon γ , and tumor necrosis factor α in patients with severe COVID-19 than individuals who experienced a milder disease[6]. Ye *et al* [26] highlighted the gut-lung axis as a potential cause of the intestinal manifestations in COVID-19. The effector CD4+ T cells play a role in GI immunity and chronic enteritis, using the C-C chemokine receptor type 9 to enter the GIT environment. Since C-C chemokine receptor type 9+ CD4+ T cells are highly expressed in the lung during infections with viral pathogens, this may explain intestinal damage and the onset of symptoms such as diarrhea. Moreover, the aggressions against the GIT mucosa can lead to damage to the intestinal barrier, which predisposes to infections by other external pathogens and the onset of GI symptoms[27].

Complementarily, the liver is also affected by the SARS-CoV-2 infection. The ACE2 is expressed in biliary epithelial cells, allowing viral access to the hepatobiliary system [28]. The most common repercussions associated with this organ are increased levels of alanine aminotransferase, aspartate aminotransferase, and aggravation of preexisting liver damage[29]. The intense systemic inflammatory response that can occur in COVID-19 patients, as previously discussed in this topic, may contribute to those repercussions[30,31]. Another important factor is the potential hepatotoxicity caused by drugs used in COVID-19 treatment. Medications such as lopinavir and ritonavir are associated with hepatic dysfunction among inpatients with SARS-CoV-2 infection[32].

GI symptoms

A study analyzing 4243 patients from six countries observed the occurrence of GI symptoms such as loss of appetite, nausea/vomiting, diarrhea, and abdominal pain in 17.6% of the cases. The lack of appetite was the most common symptom (26.8%),

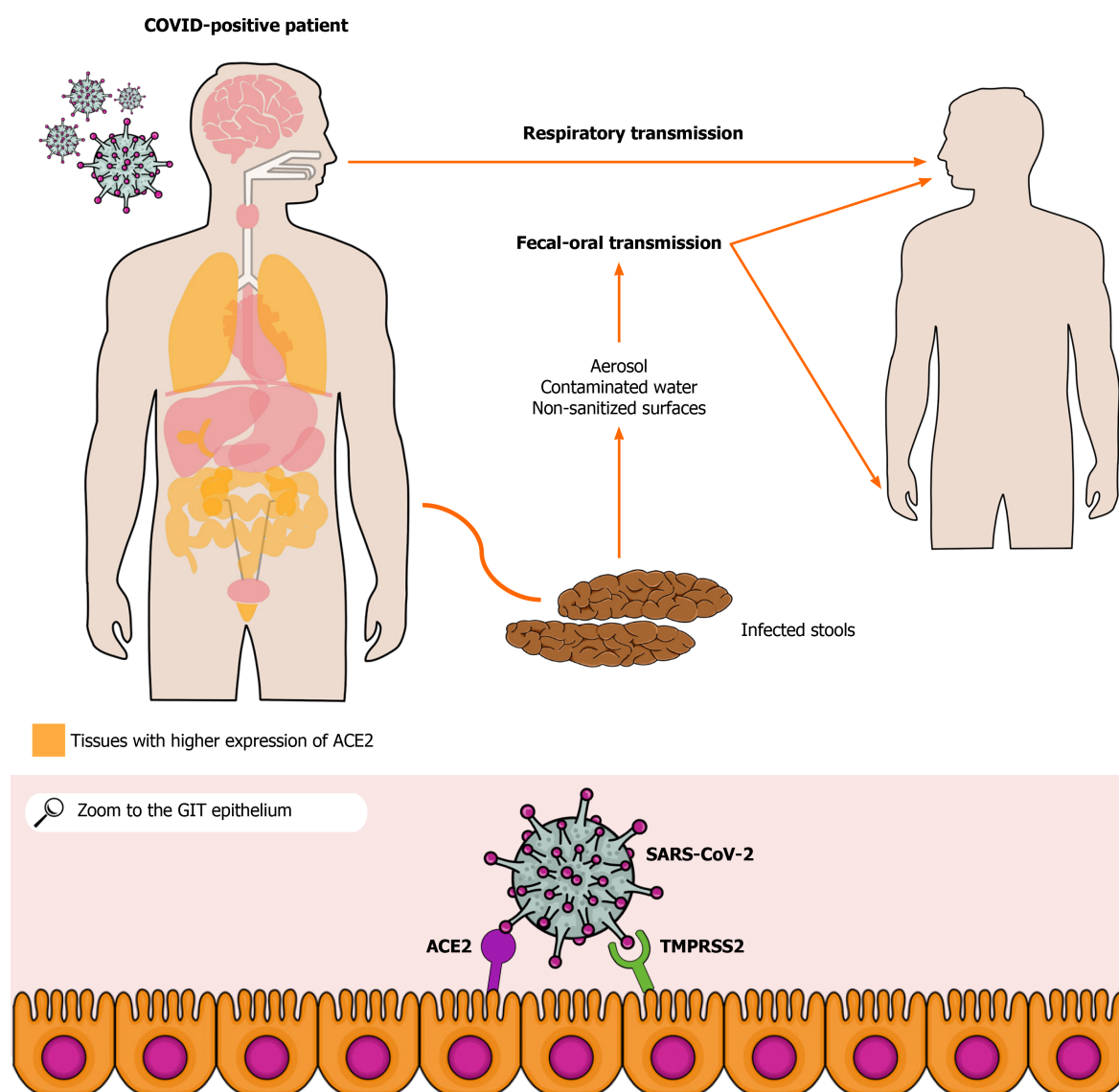


Figure 1 Global severe acute respiratory syndrome host infection scheme and molecular demonstration of the pathophysiology of gastrointestinal tract infection theory. ACE2: Angiotensin-converting enzyme 2; COVID: Coronavirus disease; GIT: Gastrointestinal tract; SARS-CoV-2: Severe acute respiratory syndrome by coronavirus 2.

followed by diarrhea (12.5%), nausea/vomiting (10.2%), and abdominal pain (9.2%) [33]. In another analysis including 6686 patients, the prevalence of digestive symptoms was 15%, and nausea/vomiting, diarrhea and loss of appetite were the most common manifestations, with incidences of 6%, 9%, and 21%, respectively. Of note, the symptoms are similar among adults and children. Moreover, patients with GI symptoms had their COVID-19 diagnosis delayed as compared to individuals without GI manifestations[34]. Concerning early GI manifestations of COVID-19, Redd *et al*[35] found that, among 318 patients, 61.8% reported at least one GI symptom at the time of hospital admission. Another study found that these manifestations were more common during hospitalization (49.5%) than at the moment of admission (11.6%)[36].

In a study performed with 1942 outpatients, 53.3% presented with at least one GI symptom, with loss of appetite affecting almost half of the patients (47%) and 24.2% of the individuals reporting diarrhea[37]. Pan *et al*[38] examined 204 patients with COVID-19 admitted to three hospitals in Hubei, China and noticed that 103 had digestive symptoms such as loss of appetite ($n = 81$), diarrhea ($n = 35$), vomiting ($n = 4$), and abdominal pain ($n = 2$) (Table 1). The diarrhea was the only GI symptom that occurred as a mild-to-severe manifestation in some patients, and, as the patients' condition worsened, the digestive symptoms tended to become more intense. Moreover, abdominal pain can be considered as an indicator of severity in patients with COVID-19, being it important for decision-making during clinical management. Kumar *et al*[39] observed that patients experiencing severe disease have a 7-fold higher

Table 1 Main gastrointestinal manifestations in the articles discussed in the text

Ref.	Any GI symptom	Diarrhea	Nausea/vomiting	Abdominal pain	Loss of appetite
Redd <i>et al</i> [35]	195	107	84	46	110
Lin <i>et al</i> [36]	58	23	17	ND	17
Pan <i>et al</i> [38]	103	35	4	2	81
Jin <i>et al</i> [40]	74	53	ND	ND	ND
Sulaiman <i>et al</i> [41]	78	41	32	42	40

GI: Gastrointestinal; ND: Not described.

chance to present with abdominal pain than non-serious cases.

In China, in an analysis with 651 patients, 74 had at least one digestive symptom, including nausea ($n = 10$), vomiting ($n = 11$), and diarrhea ($n = 53$). Only three cases had all the aforementioned digestive symptoms, and four individuals had both nausea and vomiting. Among patients with GI manifestations, the more frequent complication was liver damage, which was observed in 17.57% of the cases. Moreover, one person developed shock and five had severe acute respiratory syndrome[40]. Sulaiman *et al* [41] confirmed that GI manifestations are common among individuals infected with SARS-CoV-2, and that they are reported mainly as initial symptoms, preceding respiratory symptoms. This study estimates that about half of COVID-19 patients may have GI symptoms along with fever and/or respiratory symptoms.

Regarding hepatic damage, high levels of important markers were registered, such as elevated serum bilirubin in 9% of 1471 patients and prolonged prothrombin time in 7% of 750 cases[42]. Similarly, 243 out of 1450 patients had an abnormally high level of aspartate aminotransferase, and 197 out of 1347 individuals had a high level of alanine aminotransferase[43].

ANAL SWAB AND RNA DETECTION IN FECES

Since March 2020, the detection of SARS-CoV-2 in intestinal biopsies and stool samples has been reported in several studies[28]. Therefore, some authors have highlighted the possibility of fecal transmission of the virus[44].

Currently, there are studies that prove and validate the detection of SARS-CoV-2 RNA in stool samples[45]. In addition, anal swabs (AS) are used for the diagnosis and monitoring of COVID-19, especially to evaluate the possibility of hospital discharge of patients[46]. A timeline that compares the viral load detected in AS and throat smears (TS) during the stages of the disease found that, although TS samples detect viral load earlier, AS detects the virus for longer periods[47].

A Chinese study including 57 individuals has noticed the presence of SARS-CoV-2 viral RNA in extrapulmonary sites. They found that the RT-PCR detection of the viral RNA in stool samples or AS increased the likelihood of increased clinical severity[48]. A study from December 2020 indicates that the use of enteric samples may be effective for the monitoring of the natural course of COVID-19[49]. The findings regarding the detection of viral RNA in stool are shown in Figure 2. It demonstrates an evolution regarding the development of a new tool for the management of COVID-19 patients[1, 8,50-52].

The detection of viral RNA in feces has already been observed in individuals infected with another type of coronavirus, the Middle East respiratory syndrome coronavirus[53]. A study that included 3028 patients observed a positivity of 85.8% for SARS-CoV-2 in fecal nucleic acid tests with COVID-19 patients. It was also reported that 71.2% of the patients were still positive for fecal nucleic acid after samples from the respiratory tract became negative for the virus[54]. A study that included children with COVID-19 detected SARS-CoV-2 fecal RNA in more than 91% of the cases, with viral detection in feces for up to 70 d[55]. Data from studies evaluating the duration of positivity of stools for SARS-CoV-2 among infected individuals are shown in Table 2 [56-68]. These findings reinforce the hypothesis raised by several authors regarding possible transmission of SARS-CoV-2 *via* fecal-oral.

Table 2 Detection of severe acute respiratory syndrome by coronavirus 2 RNA in anal swabs or fecal sample

SARS-CoV-2 RNA										
<i>n</i>	Ref.	Country	<i>n</i>	Age	RT-PCR	Stool	PSDI	Respiratory	PRDI	Relevance information
1	Xie <i>et al</i> [56]	China	4	4-9 yr	AS-PS	4/4	8-33 d	4/4	11-21 d	One patient with positive stool RNA 54 d after hospital admission
2	Ge <i>et al</i> [57]	China	1	55 yr	FS-RS	1/1	18 d	1/1	7 d	Positive stool RNA 22 d after negative respiratory
3	Lo <i>et al</i> [58]	China	10	27-64 yr	FS-PS	10/10	5-19 d	10/10	9-24 d	Some patients had positive stool even with negative respiratory
4	Zhang <i>et al</i> [17]	China	3	6-9 yr	AS-PS	3/3	16-20 d	3/3	7-14 d	The anal swab was positive after 10 d of discharge
5	Liu <i>et al</i> [59]	China	9	NR	AS-PS	8/9	28-66 d	9/9	6-24 d	Positive stool RNA 46 d after discharge
6	Wang <i>et al</i> [60]	China	5	35-56 yr	FS-PS	5/5	11-30 d	5/5	5-9 d	Even after a negative respiratory test, IgM was positive on 2 consecutive occasions
7	Wang X <i>et al</i> [61]	China	3	24-42 yr	FS-PS	2/3	30-36 d	3/3	15-29 d	-
8	Xing <i>et al</i> [62]	China	3	ND	FS-PS	3/3	8 d-4 wk	3/3	2 wk	Positive stool RNA 8-20 d after negative respiratory
9	Chen <i>et al</i> [63]	China	42	42-62 yr	AS-FS	28/42	1-24 d	42/42	1-19 d	Eighteen patients remained positive for viral RNA in the feces after the pharyngeal swabs turned negative
10	Wu <i>et al</i> [64]	China	74	ND	FS-PS	33/74	27, 9 d	74/74	16, 7 d	Fecal positive 47 d after the onset of the first symptoms
11	Li <i>et al</i> [65]	China	13	33-73 yr	FS-RS	5/13	Until 38 d	13/13	5-14 d	Positive stool RNA 14-15 d after negative respiratory
12	Du <i>et al</i> [66]	China	10	9 mo-14 yr	FS-PS	7/10	Mean 34.43 d	10/10	Mean 9 d	Seven patients positive stool RNA 2 wk after discharge but negative respiratory and urine
13	Xiao <i>et al</i> [16]	China	73	10 mo-78 yr	FS-PS	39/73	1-12 d	ND	ND	Seventeen patients positive stool RNA after negative respiratory
14	Xu <i>et al</i> [67]	China	10	2 mo-15 yr	AS-PS	8/10	1-27 d	10/10	1-21	Eight patients positive stool RNA after negative respiratory
15	Fan <i>et al</i> [68]	China	1	3 mo	AS-PS	1/1	1-28 d	1/1	1-14	Positive stool RNA 14 d after negative respiratory

SARS-CoV-2: Severe acute respiratory syndrome coronavirus 2; AS: Anal swabs; PS: Pharyngeal swabs; FS: Fecal sample; RS: Respiratory samples; PSDI: Positive stool duration interval; PRDI: Positive respiratory duration interval; ND: Not described; IgM: Immunoglobulin M.

TRANSMISSION VIA FECAL-ORAL AND VIA AEROSOLS

Since the first detection of SARS-CoV-2-positive stool samples[6,16,48,66,68-72], the possibility of viral transmission through the fecal-oral route and fecal aerosols has been widely debated. Scientists have gathered their efforts in order to elucidate these issues and to determine the viability of viral particles found in air and stool samples.

Fecal-oral transmission

Studies have emphasized the risk of COVID-19 contamination from hospital surfaces and personal fomites. In an evaluation of contaminated surfaces in hospital rooms, researchers found that most samples that were found to be positive for SARS-CoV-2 RNA were from bathrooms[73]. This could indicate the possibility of fecal viral loads being more likely to remain on surfaces than viral particles released from other biological secretions, reinforcing the possibility of fecal-oral transmissions. Another paper found that five out of 27 toilet flushes tested were positive for viral RNA and all the five patients that used these bathrooms had GI symptoms[74]. This could indicate a relationship between enteric manifestations and viral shedding through feces, but further studies are needed on the topic.

Complementarily, cytopathic effects have been observed in Vero cells infected by SARS-CoV-2 isolated from feces of COVID-19 patients[75]. Moreover, the latter

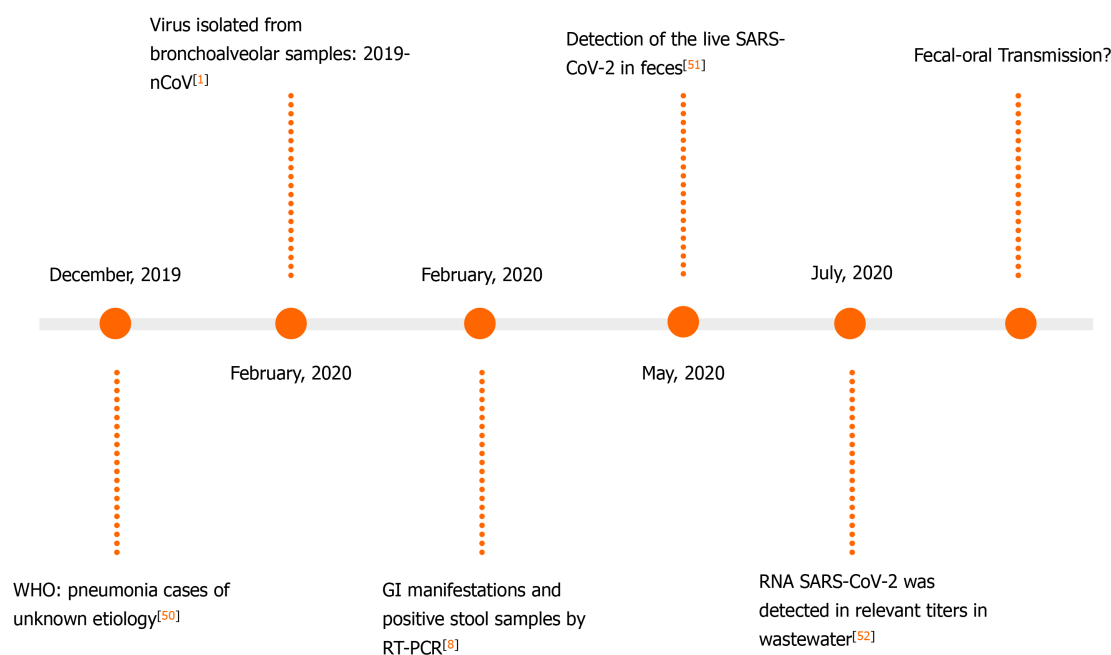


Figure 2 Timeline of studies representing the evolution of current knowledge about the possible transmission of severe acute respiratory syndrome by coronavirus 2 *via* fecal-oral. GI: Gastrointestinal; SARS-CoV-2: Severe acute respiratory syndrome by coronavirus 2; WHO: World Health Organization.

analysis through electron microscopy found viral particles with similar morphology to the novel coronavirus in fecal samples^[75-77]. These studies were essential to elucidate if the positive results from RT-PCR tests in fecal samples were due to actual virions or only represent RNA from the inactivated virus.

Transmission through fecal aerosols

It is well established that SARS-CoV can be transmitted through fecal aerosols after the analysis of the Amoy Gardens incident in Hong Kong, in which multiple residents from an apartment complex were infected due to faulty pipelines that led to the spread of aerosols from the feces of infected patients^[78]. The question raised with the new pandemic is whether or not SARS-CoV-2 is also able to remain viable through the process of aerosolization and to be transmitted.

Some works showed the presence of SARS-CoV-2 in air samples taken from patient's rooms^[74,79]. In two studies, researchers have observed cytopathic effects in Vero cells by viral particles collected in air samples. In one of these studies, the samples were observed through electron microscopy, which detected the presence of SARS-CoV-2 virions^[80]. In the other investigation, a full genome sequencing was obtained from purified material from air samples and the viral genome was the same as the genome obtained from the infected patient's nasopharyngeal swab^[81]. This indicates that viable viral particles can be obtained from aerosols, and it raises the question of possible transmission from aerosolized virus shed through feces. Interestingly, in a study, researchers were not able to replicate viruses in Vero Cells from aerosol particles examined^[82]. However, as Pan *et al*^[83] have shown, the collection of viral particles using non-ideal air samplers could be the cause of viral inactivation of some specimens, which could impede the observation of cytopathic effects.

In two studies, researchers have tested the time of SARS-CoV-2 survival in aerosol suspensions. The first one found that the virus was able to survive for at least 3 h (the duration of the experiment)^[84]. The second one searched for viral RNA through RT-quantitative PCR and found traces of the virus up to 16 h after the aerosolization of the particles, which were later visualized through an electron microscope and presented a shape consistent with the SARS-CoV-2 at the 10th minute of the experiment^[85]. These studies show that SARS-CoV-2 is able to remain viable for long periods, and aerosols can be a dangerous form of infection.

Among studies evaluating the possibility of animal infection with virus from fecal samples, Jeong *et al*^[86] intranasally inoculated viral particles that were isolated from the stool of confirmed COVID-19 patients in ferrets. Some animals showed an increase

in viral load throughout the period of infection and tested positive for the virus a few days later. All ferrets had symptoms of the disease after inoculation. In another study, Lee *et al*[87] used Syrian Golden Hamsters to inoculate intranasally and orally SARS-CoV-2 in variable doses. They found that hamsters that underwent intranasal inoculation developed more severe respiratory symptoms and similar GI inflammation to those that received the virus orally, but these results were not statistically significant ($P > 0.05$). Both groups tested positive for the virus in fecal samples and saliva[87]. This finding could indicate that in the case of fecal-oral transmission, COVID-19 manifestations could be less severe than through aerosols, but viral shedding from the infected patients would still be an important factor to consider.

Research has also shown that SARS-CoV-2 persistence time depends on multiple factors such as pH, temperature, and humidity, with the longest viability time at 4 °C temperature in a pH of 9[88]. Strategies with the use of this knowledge and standard disinfection procedures should be applied in order to reduce the risk of surface contamination, and special attention should be given to bathrooms in order to prevent transmission from their fomites. Ong *et al*[89] found contamination in 87% of surfaces in a patient's room before cleaning as opposed to no contamination in rooms of patients after the cleaning, showing the importance of precaution during the disinfecting process. In the case of the first SARS coronavirus from 2003, studies have reported that virus viability is highly affected by the pH of the patients' feces[90]. Analysis should be conducted to evaluate if this applies to SARS-CoV-2 as well.

Overall, although not totally proven, the possibility of infection by SARS-CoV-2 through the fecal-oral route or aerosolized particles should be considered. In any case, proper cleaning processes and prophylactic measures should be performed in order to avoid contact with the virus through fomites or aerosols until the possibility of both types of transmission are properly elucidated.

ENVIRONMENTAL FACTORS ASPECTS

Studies that evidence the detection of SARS-CoV-2 in fecal samples raise attention to the risks of human exposure in the environment[91]. The indirect transmission through fomites has been already well documented, especially when individuals touch contaminated surfaces and then take the hands to the mouth, nose, or eyes without first cleaning them[92]. Besides, it is assumed that improper disposal of solid waste associated with viral stability on solid surfaces could lead to contamination of surface water from household or hospital waste[93]. Furthermore, a possible spread of the virus to drinking water sources is assumed when an infected person defecates in open environments. In addition, there is a possible risk of viral transmission in shared toilets [94]. Moreover, Li *et al*[95] showed that the flow of water during flushing the toilet can spread viral particles through aerosols.

Although the transmission of SARS-CoV-2 by sewage aerosol is not yet confirmed [93], some studies (Table 3)[96-107] show the detection of SARS-CoV-2 RNA in wastewater. Arslan *et al*[108] and Pandey *et al*[93] highlight that this can be beneficial from a wastewater-based epidemiology perspective because the viral presence in wastewater can be an early warning as well as a monitoring and surveillance tool for COVID-19. However, they highlight the risk of recurrent outbreaks due to the continued presence of the virus in those media.

Recent surveys have shown that around 2.3 billion people do not have access to a basic sanitation service, and 844 million people do not have a drinking water service worldwide. Another study reports that developing countries have inefficient wastewater treatment[108]. In addition, Pandey *et al*[93] emphasized the difficulty of inspection in the least developed countries owing to the absence of a proper sewage system. Besides, Arslan *et al*[109] suggested that various societies do not have the basic conditions to inactivate the coronavirus from the water. Therefore, the treatment of water[93], the use of disinfection methods with high doses of disinfectant products [110], and public guidelines on hygienic measures[111] are convenient in that context.

CONCLUSION

The current knowledge about the dynamics of the infection in the GI tract strongly suggests a possible transmission through the fecal-oral route. In addition, the spread of infected aerosolized feces in hospital environments, bathrooms, and surfaces draws attention to this issue, which has not been considerably taken into account by health

Table 3 Detection of severe acute respiratory syndrome by coronavirus 2 RNA in water systems

Ref.	Country	Wastewater type	Main findings
Medema <i>et al</i> [96]	The Netherlands	Sewage	Sewage samples of six cities and the airport were tested: (1) February: No SARS-CoV-2 RNA was detected; and (2) March: SARS-CoV-2 RNA detection increased concomitant with the increase in COVID-19 prevalence
Ahmed <i>et al</i> [97]	Australia	Wastewater in a catchment	Two positive detections within a 6-d period from the same wastewater treatment plant
Kumar <i>et al</i> [98]	India	Wastewater Treatment Plant	Increase in SARS-CoV-2 RNA samples was concomitant with the increase in the number of active COVID-19 patients in the city
Wurtzer <i>et al</i> [99]	France	Wastewater treatment plant (raw and treated wastewater samples)	Raw wastewater samples: all positive for SARS-CoV2; Treated wastewater samples: 6 out of 8 positive for SARS-CoV2
Randazzo <i>et al</i> [100]	Spain	Wastewater treatments plants	(1) Influent samples: 35 of 42 were positive for SARS-CoV-2; (2) Effluent secondary treated samples: 2 of 18 were tested positive; and (3) Effluent tertiary treated samples: 0 of 12 tested positive
Kocamemi <i>et al</i> [101]	Turkey	Wastewater treatment plants (primary sludge and waste activated sludge)	SARS-CoV-2 RNA was detected quantitatively from all samples.
Guerrero-Latorre <i>et al</i> [102]	Ecuador	River	SARS-CoV-2 RNA was detected in the three locations
Zhang <i>et al</i> [103]	China	Septic tanks	SARS-CoV-2 RNA was detected in septic tanks after disinfection with sodium hypochlorite
Ahmed <i>et al</i> [104]	United States	Wastewater treatment plants	Two out of 15 wastewater samples tested positive
Haramoto <i>et al</i> [105]	Japan	River, wastewater treatment plants	One of 5 secondary-treated wastewater samples tested positive
La Rosa <i>et al</i> [106]	Italy	Sewage	Six out of 12 samples tested positive.
Hasan <i>et al</i> [107]	United Arab Emirates	Sewage, wastewater treatment plants, pumping stations	SARS-CoV-2 RNA was detected in 85% of untreated wastewater samples; SARS-CoV-2 RNA was not detected in wastewater treatment plants.

WHO: Pneumonia cases of unknown etiology[50]. SARS-CoV-2: Severe acute respiratory syndrome coronavirus 2; COVID-19: Coronavirus disease 2019.

agencies in discussions on infection prevention. The contamination of water by SARS-Cov-2 in sewers, wastewater treatment plants, and rivers, possibly from fecal samples, evidences a major public health problem, especially in developing countries. However, further studies are needed in order to elucidate completely the SARS-Cov-2 transmission *via* the fecal-oral route.

REFERENCES

- 1 **Zhu N**, Zhang D, Wang W, Li X, Yang B, Song J, Zhao X, Huang B, Shi W, Lu R, Niu P, Zhan F, Ma X, Wang D, Xu W, Wu G, Gao GF, Tan W; China Novel Coronavirus Investigating and Research Team. A Novel Coronavirus from Patients with Pneumonia in China, 2019. *N Engl J Med* 2020; **382**: 727-733 [PMID: 31978945 DOI: 10.1056/NEJMoa2001017]
- 2 **World Health Organization**. WHO Coronavirus Disease (COVID-19) Dashboard. Data as received by WHO from national authorities. [cited 18 January 2021]. Available from: <https://covid19.who.int/>
- 3 **Xu Z**, Shi L, Wang Y, Zhang J, Huang L, Zhang C, Liu S, Zhao P, Liu H, Zhu L, Tai Y, Bai C, Gao T, Song J, Xia P, Dong J, Zhao J, Wang FS. Pathological findings of COVID-19 associated with acute respiratory distress syndrome. *Lancet Respir Med* 2020; **8**: 420-422 [PMID: 32085846 DOI: 10.1016/S2213-2600(20)30076-X]
- 4 **Rothan HA**, Byrareddy SN. The epidemiology and pathogenesis of coronavirus disease (COVID-19) outbreak. *J Autoimmun* 2020; **109**: 102433 [PMID: 32113704 DOI: 10.1016/j.jaut.2020.102433]
- 5 **Wiersinga WJ**, Rhodes A, Cheng AC, Peacock SJ, Prescott HC. Pathophysiology, Transmission, Diagnosis, and Treatment of Coronavirus Disease 2019 (COVID-19): A Review. *JAMA* 2020; **324**: 782-793 [PMID: 32648899 DOI: 10.1001/jama.2020.12839]
- 6 **Huang C**, Wang Y, Li X, Ren L, Zhao J, Hu Y, Zhang L, Fan G, Xu J, Gu X, Cheng Z, Yu T, Xia J, Wei Y, Wu W, Xie X, Yin W, Li H, Liu M, Xiao Y, Gao H, Guo L, Xie J, Wang G, Jiang R, Gao Z, Jin Q, Wang J, Cao B. Clinical features of patients infected with 2019 novel coronavirus in Wuhan,

- China. *Lancet* 2020; **395**: 497-506 [PMID: 31986264 DOI: 10.1016/S0140-6736(20)30183-5]
- 7 **Cha MH**, Regueiro M, Sandhu DS. Gastrointestinal and hepatic manifestations of COVID-19: A comprehensive review. *World J Gastroenterol* 2020; **26**: 2323-2332 [PMID: 32476796 DOI: 10.3748/wjg.v26.i19.2323]
 - 8 **Holshue ML**, DeBolt C, Lindquist S, Lofy KH, Wiesman J, Bruce H, Spitters C, Ericson K, Wilkerson S, Tural A, Diaz G, Cohn A, Fox L, Patel A, Gerber SI, Kim L, Tong S, Lu X, Lindstrom S, Pallansch MA, Weldon WC, Biggs HM, Uyeki TM, Pillai SK; Washington State 2019-nCoV Case Investigation Team. First Case of 2019 Novel Coronavirus in the United States. *N Engl J Med* 2020; **382**: 929-936 [PMID: 32004427 DOI: 10.1056/NEJMoa2001191]
 - 9 **Villapol S**. Gastrointestinal symptoms associated with COVID-19: impact on the gut microbiome. *Transl Res* 2020; **226**: 57-69 [PMID: 32827705 DOI: 10.1016/j.trsl.2020.08.004]
 - 10 **Wong SH**, Lui RN, Sung JJ. Covid-19 and the digestive system. *J Gastroenterol Hepatol* 2020; **35**: 744-748 [PMID: 32215956 DOI: 10.1111/jgh.15047]
 - 11 **Zhang H**, Li HB, Lyu JR, Lei XM, Li W, Wu G, Lyu J, Dai ZM. Specific ACE2 expression in small intestinal enterocytes may cause gastrointestinal symptoms and injury after 2019-nCoV infection. *Int J Infect Dis* 2020; **96**: 19-24 [PMID: 32311451 DOI: 10.1016/j.ijid.2020.04.027]
 - 12 **Yeo C**, Kaushal S, Yeo D. Enteric involvement of coronaviruses: is faecal-oral transmission of SARS-CoV-2 possible? *Lancet Gastroenterol Hepatol* 2020; **5**: 335-337 [PMID: 32087098 DOI: 10.1016/S2468-1253(20)30048-0]
 - 13 **Liu Z**, Xiao X, Wei X, Li J, Yang J, Tan H, Zhu J, Zhang Q, Wu J, Liu L. Composition and divergence of coronavirus spike proteins and host ACE2 receptors predict potential intermediate hosts of SARS-CoV-2. *J Med Virol* 2020; **92**: 595-601 [PMID: 32100877 DOI: 10.1002/jmv.25726]
 - 14 **Stopsack KH**, Mucci LA, Antonarakis ES, Nelson PS, Kantoff PW. TMPRSS2 and COVID-19: Serendipity or Opportunity for Intervention? *Cancer Discov* 2020; **10**: 779-782 [PMID: 32276929 DOI: 10.1158/2159-8290.CD-20-0451]
 - 15 **Zhang J**, Wang S, Xue Y. Fecal specimen diagnosis 2019 novel coronavirus-infected pneumonia. *J Med Virol* 2020; **92**: 680-682 [PMID: 32124995 DOI: 10.1002/jmv.25742]
 - 16 **Xiao F**, Tang M, Zheng X, Liu Y, Li X, Shan H. Evidence for Gastrointestinal Infection of SARS-CoV-2. *Gastroenterology* 2020; **158**: 1831-1833.e3 [PMID: 32142773 DOI: 10.1053/j.gastro.2020.02.055]
 - 17 **Zhang T**, Cui X, Zhao X, Wang J, Zheng J, Zheng G, Guo W, Cai C, He S, Xu Y. Detectable SARS-CoV-2 viral RNA in feces of three children during recovery period of COVID-19 pneumonia. *J Med Virol* 2020; **92**: 909-914 [PMID: 32222992 DOI: 10.1002/jmv.25795]
 - 18 **Jiang X**, Luo M, Zou Z, Wang X, Chen C, Qiu J. Asymptomatic SARS-CoV-2 infected case with viral detection positive in stool but negative in nasopharyngeal samples lasts for 42 days. *J Med Virol* 2020; **92**: 1807-1809 [PMID: 32330309 DOI: 10.1002/jmv.25941]
 - 19 **Chu DKW**, Pan Y, Cheng SMS, Hui KPY, Krishnan P, Liu Y, Ng DYM, Wan CKC, Yang P, Wang Q, Peiris M, Poon LLM. Molecular Diagnosis of a Novel Coronavirus (2019-nCoV) Causing an Outbreak of Pneumonia. *Clin Chem* 2020; **66**: 549-555 [PMID: 32031583 DOI: 10.1093/clinchem/hvaa029]
 - 20 **Dong M**, Zhang J, Ma X, Tan J, Chen L, Liu S, Xin Y, Zhuang L. ACE2, TMPRSS2 distribution and extrapulmonary organ injury in patients with COVID-19. *Biomed Pharmacother* 2020; **131**: 110678 [PMID: 32861070 DOI: 10.1016/j.biopha.2020.110678]
 - 21 **Liang W**, Feng Z, Rao S, Xiao C, Xue X, Lin Z, Zhang Q, Qi W. Diarrhoea may be underestimated: a missing link in 2019 novel coronavirus. *Gut* 2020; **69**: 1141-1143 [PMID: 32102928 DOI: 10.1136/gutjnl-2020-320832]
 - 22 **Sungnak W**, Huang N, Bécavin C, Berg M, Queen R, Litvinukova M, Talavera-López C, Maatz H, Reichart D, Sampaziotis F, Worlock KB, Yoshida M, Barnes JL; HCA Lung Biological Network. SARS-CoV-2 entry factors are highly expressed in nasal epithelial cells together with innate immune genes. *Nat Med* 2020; **26**: 681-687 [PMID: 32327758 DOI: 10.1038/s41591-020-0868-6]
 - 23 **Hoffmann M**, Kleine-Weber H, Schroeder S, Krüger N, Herrler T, Erichsen S, Schiergens TS, Herrler G, Wu NH, Nitsche A, Müller MA, Drosten C, Pöhlmann S. SARS-CoV-2 Cell Entry Depends on ACE2 and TMPRSS2 and Is Blocked by a Clinically Proven Protease Inhibitor. *Cell* 2020; **181**: 271-280.e8 [PMID: 32142651 DOI: 10.1016/j.cell.2020.02.052]
 - 24 **Zhou P**, Yang XL, Wang XG, Hu B, Zhang L, Zhang W, Si HR, Zhu Y, Li B, Huang CL, Chen HD, Chen J, Luo Y, Guo H, Jiang RD, Liu MQ, Chen Y, Shen XR, Wang X, Zheng XS, Zhao K, Chen QJ, Deng F, Liu LL, Yan B, Zhan FX, Wang YY, Xiao GF, Shi ZL. A pneumonia outbreak associated with a new coronavirus of probable bat origin. *Nature* 2020; **579**: 270-273 [PMID: 32015507 DOI: 10.1038/s41586-020-2012-7]
 - 25 **Hashimoto T**, Perlot T, Rehman A, Trichereau J, Ishiguro H, Paolino M, Sigl V, Hanada T, Hanada R, Lipinski S, Wild B, Camargo SM, Singer D, Richter A, Kuba K, Fukamizu A, Schreiber S, Clevers H, Verrey F, Rosenstiel P, Penninger JM. ACE2 Links amino acid malnutrition to microbial ecology and intestinal inflammation. *Nature* 2012; **487**: 477-481 [PMID: 22837003 DOI: 10.1038/nature11228]
 - 26 **Ye Q**, Wang B, Zhang T, Xu J, Shang S. The mechanism and treatment of gastrointestinal symptoms in patients with COVID-19. *Am J Physiol Gastrointest Liver Physiol* 2020; **319**: G245-G252 [PMID: 32639848 DOI: 10.1152/ajpgi.00148.2020]
 - 27 **Gu J**, Han B, Wang J. COVID-19: Gastrointestinal Manifestations and Potential Fecal-Oral Transmission. *Gastroenterology* 2020; **158**: 1518-1519 [PMID: 32142785 DOI: 10.1053/j.gastro.2020.02.055]

- 10.1053/j.gastro.2020.02.054]
- 28 **Wang D**, Hu B, Hu C, Zhu F, Liu X, Zhang J, Wang B, Xiang H, Cheng Z, Xiong Y, Zhao Y, Li Y, Wang X, Peng Z. Clinical Characteristics of 138 Hospitalized Patients With 2019 Novel Coronavirus-Infected Pneumonia in Wuhan, China. *JAMA* 2020; **323**: 1061-1069 [PMID: [32031570](#) DOI: [10.1001/jama.2020.1585](#)]
 - 29 **Jothimani D**, Venugopal R, Abedin MF, Kaliamoorthy I, Rela M. COVID-19 and the liver. *J Hepatol* 2020; **73**: 1231-1240 [PMID: [32553666](#) DOI: [10.1016/j.jhep.2020.06.006](#)]
 - 30 **Sun J**, Aghemo A, Forner A, Valenti L. COVID-19 and liver disease. *Liver Int* 2020; **40**: 1278-1281 [PMID: [32251539](#) DOI: [10.1111/liv.14470](#)]
 - 31 **Cravioto J**, Matsubara M, Arrieta R. [Low birth weight and the functioning of the central nervous system in the first years of life]. *Bol Med Hosp Infant Mex* 1988; **45**: 718-728 [PMID: [3214519](#) DOI: [10.1016/S2468-1253\(20\)30057-1](#)]
 - 32 **Fan Z**, Chen L, Li J, Cheng X, Yang J, Tian C, Zhang Y, Huang S, Liu Z, Cheng J. Clinical Features of COVID-19-Related Liver Functional Abnormality. *Clin Gastroenterol Hepatol* 2020; **18**: 1561-1566 [PMID: [32283325](#) DOI: [10.1016/j.cgh.2020.04.002](#)]
 - 33 **Cheung KS**, Hung IFN, Chan PPY, Lung KC, Tso E, Liu R, Ng YY, Chu MY, Chung TWH, Tam AR, Yip CCY, Leung KH, Fung AY, Zhang RR, Lin Y, Cheng HM, Zhang AJX, To KKW, Chan KH, Yuen KY, Leung WK. Gastrointestinal Manifestations of SARS-CoV-2 Infection and Virus Load in Fecal Samples From a Hong Kong Cohort: Systematic Review and Meta-analysis. *Gastroenterology* 2020; **159**: 81-95 [PMID: [32251668](#) DOI: [10.1053/j.gastro.2020.03.065](#)]
 - 34 **Mao R**, Qiu Y, He JS, Tan JY, Li XH, Liang J, Shen J, Zhu LR, Chen Y, Iacucci M, Ng SC, Ghosh S, Chen MH. Manifestations and prognosis of gastrointestinal and liver involvement in patients with COVID-19: a systematic review and meta-analysis. *Lancet Gastroenterol Hepatol* 2020; **5**: 667-678 [PMID: [32405603](#) DOI: [10.1016/S2468-1253\(20\)30126-6](#)]
 - 35 **Redd WD**, Zhou JC, Hathorn KE, McCarty TR, Bazarbashi AN, Thompson CC, Shen L, Chan WW. Prevalence and Characteristics of Gastrointestinal Symptoms in Patients With Severe Acute Respiratory Syndrome Coronavirus 2 Infection in the United States: A Multicenter Cohort Study. *Gastroenterology* 2020; **159**: 765-767.e2 [PMID: [32333911](#) DOI: [10.1053/j.gastro.2020.04.045](#)]
 - 36 **Lin L**, Jiang X, Zhang Z, Huang S, Fang Z, Gu Z, Gao L, Shi H, Mai L, Liu Y, Lin X, Lai R, Yan Z, Li X, Shan H. Gastrointestinal symptoms of 95 cases with SARS-CoV-2 infection. *Gut* 2020; **69**: 997-1001 [PMID: [32241899](#) DOI: [10.1136/gutjnl-2020-321013](#)]
 - 37 **Sierpiński R**, Pinkas J, Jankowski M, Zgliczyński WS, Wierzbza W, Gujski M, Szumowski L. Sex differences in the frequency of gastrointestinal symptoms and olfactory or taste disorders in 1942 nonhospitalized patients with coronavirus disease 2019 (COVID-19). *Pol Arch Intern Med* 2020; **130**: 501-505 [PMID: [32491298](#) DOI: [10.20452/pamw.15414](#)]
 - 38 **Pan L**, Mu M, Yang P, Sun Y, Wang R, Yan J, Li P, Hu B, Wang J, Hu C, Jin Y, Niu X, Ping R, Du Y, Li T, Xu G, Hu Q, Tu L. Clinical Characteristics of COVID-19 Patients With Digestive Symptoms in Hubei, China: A Descriptive, Cross-Sectional, Multicenter Study. *Am J Gastroenterol* 2020; **115**: 766-773 [PMID: [32287140](#) DOI: [10.14309/ajg.0000000000000620](#)]
 - 39 **Suresh Kumar VC**, Mukherjee S, Harne PS, Subedi A, Ganapathy MK, Patthipati VS, Sapkota B. Novelty in the gut: a systematic review and meta-analysis of the gastrointestinal manifestations of COVID-19. *BMJ Open Gastroenterol* 2020; **7** [PMID: [32457035](#) DOI: [10.1136/bmjgast-2020-000417](#)]
 - 40 **Jin X**, Lian JS, Hu JH, Gao J, Zheng L, Zhang YM, Hao SR, Jia HY, Cai H, Zhang XL, Yu GD, Xu KJ, Wang XY, Gu JQ, Zhang SY, Ye CY, Jin CL, Lu YF, Yu X, Yu XP, Huang JR, Xu KL, Ni Q, Yu CB, Zhu B, Li YT, Liu J, Zhao H, Zhang X, Yu L, Guo YZ, Su JW, Tao JJ, Lang GJ, Wu XX, Wu WR, Qv TT, Xiang DR, Yi P, Shi D, Chen Y, Ren Y, Qiu YQ, Li LJ, Sheng J, Yang Y. Epidemiological, clinical and virological characteristics of 74 cases of coronavirus-infected disease 2019 (COVID-19) with gastrointestinal symptoms. *Gut* 2020; **69**: 1002-1009 [PMID: [32213556](#) DOI: [10.1136/gutjnl-2020-320926](#)]
 - 41 **Sulaiman T**, Algharawi AA, Idrees M, Alzaidy RH, Faris K, Cullingford G, Rasheed J. The prevalence of gastrointestinal symptoms among patients with COVID-19 and the effect on the severity of the disease. *JGH Open* 2020 [PMID: [33043143](#) DOI: [10.1002/jgh3.12415](#)]
 - 42 **Kumar A**, Arora A, Sharma P, Anikindi SA, Bansal N, Singla V, Khare S, Srivastava A. Gastrointestinal and hepatic manifestations of Corona Virus Disease-19 and their relationship to severe clinical course: A systematic review and meta-analysis. *Indian J Gastroenterol* 2020; **39**: 268-284 [PMID: [32749643](#) DOI: [10.1007/s12664-020-01058-3](#)]
 - 43 **Parasa S**, Desai M, Thoguluva Chandrasekar V, Patel HK, Kennedy KF, Roesch T, Spadaccini M, Colombo M, Gabbiadini R, Artifon ELA, Repici A, Sharma P. Prevalence of Gastrointestinal Symptoms and Fecal Viral Shedding in Patients With Coronavirus Disease 2019: A Systematic Review and Meta-analysis. *JAMA Netw Open* 2020; **3**: e2011335 [PMID: [32525549](#) DOI: [10.1001/jamanetworkopen.2020.11335](#)]
 - 44 **Green CA**, Quraishi MN, Shabir S, Sharma N, Hansen R, Gaya DR, Hart AL, Loman NJ, Iqbal TH. Screening faecal microbiota transplant donors for SARS-CoV-2 by molecular testing of stool is the safest way forward. *Lancet Gastroenterol Hepatol* 2020; **5**: 531 [PMID: [32240618](#) DOI: [10.1016/S2468-1253\(20\)30089-3](#)]
 - 45 **Perchetti GA**, Nalla AK, Huang ML, Zhu H, Wei Y, Stensland L, Loprieno MA, Jerome KR, Greninger AL. Validation of SARS-CoV-2 detection across multiple specimen types. *J Clin Virol* 2020; **128**: 104438 [PMID: [32405257](#) DOI: [10.1016/j.jcv.2020.104438](#)]

- 46 **Sun M**, Guo D, Zhang J, Teng HF, Xia J, Liu P, Ge QX, Wang MY. Anal swab as a potentially optimal specimen for SARS-CoV-2 detection to evaluate hospital discharge of COVID-19 patients. *Future Microbiol* 2020; **15**: 1101-1107 [PMID: [32795131](#) DOI: [10.2217/fmb-2020-0090](#)]
- 47 **Zhang W**, Du RH, Li B, Zheng XS, Yang XL, Hu B, Wang YY, Xiao GF, Yan B, Shi ZL, Zhou P. Molecular and serological investigation of 2019-nCoV infected patients: implication of multiple shedding routes. *Emerg Microbes Infect* 2020; **9**: 386-389 [PMID: [32065057](#) DOI: [10.1080/22221751.2020.1729071](#)]
- 48 **Chen W**, Lan Y, Yuan X, Deng X, Li Y, Cai X, Li L, He R, Tan Y, Gao M, Tang G, Zhao L, Wang J, Fan Q, Wen C, Tong Y, Tang Y, Hu F, Li F, Tang X. Detectable 2019-nCoV viral RNA in blood is a strong indicator for the further clinical severity. *Emerg Microbes Infect* 2020; **9**: 469-473 [PMID: [32102625](#) DOI: [10.1080/22221751.2020.1732837](#)]
- 49 **Li H**, Ren L, Zhang L, Wang Y, Guo L, Wang C, Xiao Y, Rao J, Wang X, Liu Y, Huang C, Gu X, Fan G, Li H, Lu B, Cao B, Wang J. High anal swab viral load predisposes adverse clinical outcomes in severe COVID-19 patients. *Emerg Microbes Infect* 2020; **9**: 2707-2714 [PMID: [33259268](#) DOI: [10.1080/22221751.2020.1858700](#)]
- 50 **World Health Organization**. WHO: Pneumonia of unknown cause, China. [cited 5 January 2020]. Available from: <https://www.who.int/csr/don/05-january-2020-pneumonia-of-unknown-cause-china/en/>
- 51 **Wang W**, Xu Y, Gao R, Lu R, Han K, Wu G, Tan W. Detection of SARS-CoV-2 in Different Types of Clinical Specimens. *JAMA* 2020; **323**: 1843-1844 [PMID: [32159775](#) DOI: [10.1001/jama.2020.3786](#)]
- 52 **Wu F**, Zhang J, Xiao A, Gu X, Lee WL, Armas F, Kauffman K, Hanage W, Matus M, Ghaeli N, Endo N, Duvallet C, Poyet M, Moniz K, Washburne AD, Erickson TB, Chai PR, Thompson J, Alm EJ. SARS-CoV-2 Titers in Wastewater Are Higher than Expected from Clinically Confirmed Cases. *mSystems* 2020; **5** [PMID: [32694130](#) DOI: [10.1128/mSystems.00614-20](#)]
- 53 **Corman VM**, Albarrak AM, Omrani AS, Albarrak MM, Farah ME, Almasri M, Muth D, Sieberg A, Meyer B, Assiri AM, Binger T, Steinhagen K, Lattwein E, Al-Tawfiq J, Müller MA, Drosten C, Memish ZA. Viral Shedding and Antibody Response in 37 Patients With Middle East Respiratory Syndrome Coronavirus Infection. *Clin Infect Dis* 2016; **62**: 477-483 [PMID: [26565003](#) DOI: [10.1093/cid/civ951](#)]
- 54 **Wang JG**, Cui HR, Tang HB, Deng XL. Gastrointestinal symptoms and fecal nucleic acid testing of children with 2019 coronavirus disease: a systematic review and meta-analysis. *Sci Rep* 2020; **10**: 17846 [PMID: [33082472](#) DOI: [10.1038/s41598-020-74913-0](#)]
- 55 **Hua CZ**, Miao ZP, Zheng JS, Huang Q, Sun QF, Lu HP, Su FF, Wang WH, Huang LP, Chen DQ, Xu ZW, Ji LD, Zhang HP, Yang XW, Li MH, Mao YY, Ying MZ, Ye S, Shu Q, Chen EF, Liang JF, Wang W, Chen ZM, Li W, Fu JF. Epidemiological features and viral shedding in children with SARS-CoV-2 infection. *J Med Virol* 2020; **92**: 2804-2812 [PMID: [32542750](#) DOI: [10.1002/jmv.26180](#)]
- 56 **Xie J**, Long X, Ren C, He R, Yan X, Li W, Luo Z, Li Q, Xu H, Liu E. Follow-up Study of Long-time Positive RT-PCR in Stool Specimens From Asymptomatic Children Infected With SARS-CoV-2. *Pediatr Infect Dis J* 2020; **39**: e315-e317 [PMID: [32932332](#) DOI: [10.1097/INF.0000000000002837](#)]
- 57 **Ge R**, Chen Z, Liu X, Zhang Q, Zhu G, Xiao Q. Positive Stool Test Results Suggest that the Discharge Standard for COVID-19 Needs Improvement. *Jpn J Infect Dis* 2021; **74**: 76-78 [PMID: [32741930](#) DOI: [10.7883/yoken.JJID.2020.265](#)]
- 58 **Lo IL**, Lio CF, Cheong HH, Lei CI, Cheong TH, Zhong X, Tian Y, Sin NN. Evaluation of SARS-CoV-2 RNA shedding in clinical specimens and clinical characteristics of 10 patients with COVID-19 in Macau. *Int J Biol Sci* 2020; **16**: 1698-1707 [PMID: [32226287](#) DOI: [10.7150/ijbs.45357](#)]
- 59 **Liu P**, Cai J, Jia R, Xia S, Wang X, Cao L, Zeng M, Xu J. Dynamic surveillance of SARS-CoV-2 shedding and neutralizing antibody in children with COVID-19. *Emerg Microbes Infect* 2020; **9**: 1254-1258 [PMID: [32515685](#) DOI: [10.1080/22221751.2020.1772677](#)]
- 60 **Wang QX**, Huang KC, Qi L, Zeng XH, Zheng SL. No infectious risk of COVID-19 patients with long-term fecal 2019-nCoV nucleic acid positive. *Eur Rev Med Pharmacol Sci* 2020; **24**: 5772-5777 [PMID: [32495914](#) DOI: [10.26355/eurrev_202005_21370](#)]
- 61 **Wang X**, Zhou Y, Jiang N, Zhou Q, Ma WL. Persistence of intestinal SARS-CoV-2 infection in patients with COVID-19 Leads to re-admission after pneumonia resolved. *Int J Infect Dis* 2020; **95**: 433-435 [PMID: [32353545](#) DOI: [10.1016/j.ijid.2020.04.063](#)]
- 62 **Xing Y**, Ni W, Wu Q, Li W, Li G, Wang W, Tong J, Song X, Wong GWK, Xing Q. Dynamics of faecal SARS-CoV-2 in infected children during the convalescent phase. *J Infect* 2020; **81**: 318-356 [PMID: [32283149](#) DOI: [10.1016/j.jinf.2020.03.049](#)]
- 63 **Chen Y**, Chen L, Deng Q, Zhang G, Wu K, Ni L, Yang Y, Liu B, Wang W, Wei C, Yang J, Ye G, Cheng Z. The presence of SARS-CoV-2 RNA in the feces of COVID-19 patients. *J Med Virol* 2020; **92**: 833-840 [PMID: [32243607](#) DOI: [10.1002/jmv.25825](#)]
- 64 **Wu Y**, Guo C, Tang L, Hong Z, Zhou J, Dong X, Yin H, Xiao Q, Tang Y, Qu X, Kuang L, Fang X, Mishra N, Lu J, Shan H, Jiang G, Huang X. Prolonged presence of SARS-CoV-2 viral RNA in faecal samples. *Lancet Gastroenterol Hepatol* 2020; **5**: 434-435 [PMID: [32199469](#) DOI: [10.1016/S2468-1253\(20\)30083-2](#)]
- 65 **Li Y**, Hu Y, Yu Y, Zhang X, Li B, Wu J, Li J, Wu Y, Xia X, Tang H, Xu J. Positive result of Sars-Cov-2 in faeces and sputum from discharged patients with COVID-19 in Yiwu, China. *J Med Virol*

- 2020; **92**: 1938-1947 [PMID: [32311109](#) DOI: [10.1002/jmv.25905](#)]
- 66 **Du W**, Yu J, Liu X, Chen H, Lin L, Li Q. Persistence of SARS-CoV-2 virus RNA in feces: A case series of children. *J Infect Public Health* 2020; **13**: 926-931 [PMID: [32546439](#) DOI: [10.1016/j.jiph.2020.05.025](#)]
- 67 **Xu Y**, Li X, Zhu B, Liang H, Fang C, Gong Y, Guo Q, Sun X, Zhao D, Shen J, Zhang H, Liu H, Xia H, Tang J, Zhang K, Gong S. Characteristics of pediatric SARS-CoV-2 infection and potential evidence for persistent fecal viral shedding. *Nat Med* 2020; **26**: 502-505 [PMID: [32284613](#) DOI: [10.1038/s41591-020-0817-4](#)]
- 68 **Fan Q**, Pan Y, Wu Q, Liu S, Song X, Xie Z, Liu Y, Zhao L, Wang Z, Zhang Y, Wu Z, Guan L, Lv X. Anal swab findings in an infant with COVID-19. *Pediatr Investig* 2020; **4**: 48-50 [PMID: [32328338](#) DOI: [10.1002/ped4.12186](#)]
- 69 **Chen C**, Gao G, Xu Y, Pu L, Wang Q, Wang L, Wang W, Song Y, Chen M, Yu F, Yang S, Tang Y, Zhao L, Wang H, Wang Y, Zeng H, Zhang F. SARS-CoV-2-Positive Sputum and Feces After Conversion of Pharyngeal Samples in Patients With COVID-19. *Ann Intern Med* 2020; **172**: 832-834 [PMID: [32227141](#) DOI: [10.7326/M20-0991](#)]
- 70 **Ling Y**, Xu SB, Lin YX, Tian D, Zhu ZQ, Dai FH, Wu F, Song ZG, Huang W, Chen J, Hu BJ, Wang S, Mao EQ, Zhu L, Zhang WH, Lu HZ. Persistence and clearance of viral RNA in 2019 novel coronavirus disease rehabilitation patients. *Chin Med J (Engl)* 2020; **133**: 1039-1043 [PMID: [32118639](#) DOI: [10.1097/CM9.0000000000000774](#)]
- 71 **Tang A**, Tong ZD, Wang HL, Dai YX, Li KF, Liu JN, Wu WJ, Yuan C, Yu ML, Li P, Yan JB. Detection of Novel Coronavirus by RT-PCR in Stool Specimen from Asymptomatic Child, China. *Emerg Infect Dis* 2020; **26**: 1337-1339 [PMID: [32150527](#) DOI: [10.3201/eid2606.200301](#)]
- 72 **Xing YH**, Ni W, Wu Q, Li WJ, Li GJ, Wang WD, Tong JN, Song XF, Wing-Kin Wong G, Xing QS. Prolonged viral shedding in feces of pediatric patients with coronavirus disease 2019. *J Microbiol Immunol Infect* 2020; **53**: 473-480 [PMID: [32276848](#) DOI: [10.1016/j.jmii.2020.03.021](#)]
- 73 **Ding Z**, Qian H, Xu B, Huang Y, Miao T, Yen HL, Xiao S, Cui L, Wu X, Shao W, Song Y, Sha L, Zhou L, Xu Y, Zhu B, Li Y. Toilets dominate environmental detection of severe acute respiratory syndrome coronavirus 2 in a hospital. *Sci Total Environ* 2021; **753**: 141710 [PMID: [32891988](#) DOI: [10.1016/j.scitotenv.2020.141710](#)]
- 74 **Chia PY**, Coleman KK, Tan YK, Ong SWX, Gum M, Lau SK, Lim XF, Lim AS, Sutjipto S, Lee PH, Son TT, Young BE, Milton DK, Gray GC, Schuster S, Barkham T, De PP, Vasoo S, Chan M, Ang BSP, Tan BH, Leo YS, Ng OT, Wong MSY, Marimuthu K; Singapore 2019 Novel Coronavirus Outbreak Research Team. Detection of air and surface contamination by SARS-CoV-2 in hospital rooms of infected patients. *Nat Commun* 2020; **11**: 2800 [PMID: [32472043](#) DOI: [10.1038/s41467-020-16670-2](#)]
- 75 **Xiao F**, Sun J, Xu Y, Li F, Huang X, Li H, Zhao J, Huang J. Infectious SARS-CoV-2 in Feces of Patient with Severe COVID-19. *Emerg Infect Dis* 2020; **26**: 1920-1922 [PMID: [32421494](#) DOI: [10.3201/eid2608.200681](#)]
- 76 **Zhang Y**, Chen C, Zhu SL, Shu C, Wang DY, Song JD, Song Y, Zhen W, Feng ZJ, Wu GZ, Xu J, Xu WB. Isolation of 2019-nCoV from a Stool Specimen of a Laboratory-Confirmed Case of the Coronavirus Disease 2019 (COVID-19). *Zhongguo Jibing Yufang Kongzhi Zhongxin Zhoubao* 2020; **2**: 123-124 [DOI: [10.46234/ccdcw2020.033](#)]
- 77 **Zhang Y**, Chen C, Song Y, Zhu S, Wang D, Zhang H, Han G, Weng Y, Xu J, Yu P, Jiang W, Yang X, Lang Z, Yan D, Wang Y, Song J, Gao GF, Wu G, Xu W. Excretion of SARS-CoV-2 through faecal specimens. *Emerg Microbes Infect* 2020; **9**: 2501-2508 [PMID: [33161824](#) DOI: [10.1080/22221751.2020.1844551](#)]
- 78 **Yu IT**, Li Y, Wong TW, Tam W, Chan AT, Lee JH, Leung DY, Ho T. Evidence of airborne transmission of the severe acute respiratory syndrome virus. *N Engl J Med* 2004; **350**: 1731-1739 [PMID: [15102999](#) DOI: [10.1056/NEJMoa032867](#)]
- 79 **Guo ZD**, Wang ZY, Zhang SF, Li X, Li L, Li C, Cui Y, Fu RB, Dong YZ, Chi XY, Zhang MY, Liu K, Cao C, Liu B, Zhang K, Gao YW, Lu B, Chen W. Aerosol and Surface Distribution of Severe Acute Respiratory Syndrome Coronavirus 2 in Hospital Wards, Wuhan, China, 2020. *Emerg Infect Dis* 2020; **26**: 1583-1591 [PMID: [32275497](#) DOI: [10.3201/eid2607.200885](#)]
- 80 **Santarpia JL**, Rivera DN, Herrera VL, Morwitzer MJ, Creager HM, Santarpia GW, Crown KK, Brett-Major DM, Schnaubelt ER, Broadhurst MJ, Lawler JV, Reid SP, Lowe JJ. Aerosol and surface contamination of SARS-CoV-2 observed in quarantine and isolation care. *Sci Rep* 2020; **10**: 12732 [PMID: [32728118](#) DOI: [10.1038/s41598-020-69286-3](#)]
- 81 **Lednický JA**, Lauzardo M, Fan ZH, Jutla A, Tilly TB, Gangwar M, Usmani M, Shankar SN, Mohamed K, Eiguren-Fernandez A, Stephenson CJ, Alam MM, Elbadry MA, Loeb JC, Subramaniam K, Waltzek TB, Cherabuddi K, Morris JG Jr, Wu CY. Viable SARS-CoV-2 in the air of a hospital room with COVID-19 patients. *Int J Infect Dis* 2020; **100**: 476-482 [PMID: [32949774](#) DOI: [10.1016/j.ijid.2020.09.025](#)]
- 82 **Binder RA**, Alarja NA, Robie ER, Kochev KE, Xiu L, Rocha-Melognó L, Abdelgadir A, Goli SV, Farrell AS, Coleman KK, Turner AL, Lautredou CC, Lednický JA, Lee MJ, Polage CR, Simmons RA, Deshusses MA, Anderson BD, Gray GC. Environmental and Aerosolized Severe Acute Respiratory Syndrome Coronavirus 2 Among Hospitalized Coronavirus Disease 2019 Patients. *J Infect Dis* 2020; **222**: 1798-1806 [PMID: [32905595](#) DOI: [10.1093/infdis/jiaa575](#)]
- 83 **Pan M**, Lednický JA, Wu CY. Collection, particle sizing and detection of airborne viruses. *J Appl*

- Microbiol* 2019; **127**: 1596-1611 [PMID: [30974505](#) DOI: [10.1111/jam.14278](#)]
- 84 **van Doremalen N**, Bushmaker T, Morris DH, Holbrook MG, Gamble A, Williamson BN, Tamin A, Harcourt JL, Thornburg NJ, Gerber SI, Lloyd-Smith JO, de Wit E, Munster VJ. Aerosol and Surface Stability of SARS-CoV-2 as Compared with SARS-CoV-1. *N Engl J Med* 2020; **382**: 1564-1567 [PMID: [32182409](#) DOI: [10.1056/NEJMc2004973](#)]
 - 85 **Fears AC**, Klimstra WB, Duprex P, Hartman A, Weaver SC, Plante KS, Mirchandani D, Plante JA, Aguilar PV, Fernández D, Nalca A, Totura A, Dyer D, Kearney B, Lackemeyer M, Bohannon JK, Johnson R, Garry RF, Reed DS, Roy CJ. Persistence of Severe Acute Respiratory Syndrome Coronavirus 2 in Aerosol Suspensions. *Emerg Infect Dis* 2020; **26** [PMID: [32568661](#) DOI: [10.3201/eid2609.201806](#)]
 - 86 **Jeong HW**, Kim SM, Kim HS, Kim YI, Kim JH, Cho JY, Kim SH, Kang H, Kim SG, Park SJ, Kim EH, Choi YK. Viable SARS-CoV-2 in various specimens from COVID-19 patients. *Clin Microbiol Infect* 2020; **26**: 1520-1524 [PMID: [32711057](#) DOI: [10.1016/j.cmi.2020.07.020](#)]
 - 87 **Lee AC**, Zhang AJ, Chan JF, Li C, Fan Z, Liu F, Chen Y, Liang R, Sridhar S, Cai JP, Poon VK, Chan CC, To KK, Yuan S, Zhou J, Chu H, Yuen KY. Oral SARS-CoV-2 Inoculation Establishes Subclinical Respiratory Infection with Virus Shedding in Golden Syrian Hamsters. *Cell Rep Med* 2020; **1**: 100121 [PMID: [32984855](#) DOI: [10.1016/j.xcrm.2020.100121](#)]
 - 88 **Chan KH**, Sridhar S, Zhang RR, Chu H, Fung AY, Chan G, Chan JF, To KK, Hung IF, Cheng VC, Yuen KY. Factors affecting stability and infectivity of SARS-CoV-2. *J Hosp Infect* 2020; **106**: 226-231 [PMID: [32652214](#) DOI: [10.1016/j.jhin.2020.07.009](#)]
 - 89 **Ong SWX**, Tan YK, Chia PY, Lee TH, Ng OT, Wong MSY, Marimuthu K. Air, Surface Environmental, and Personal Protective Equipment Contamination by Severe Acute Respiratory Syndrome Coronavirus 2 (SARS-CoV-2) From a Symptomatic Patient. *JAMA* 2020; **323**: 1610-1612 [PMID: [32129805](#) DOI: [10.1001/jama.2020.3227](#)]
 - 90 **Lai MY**, Cheng PK, Lim WW. Survival of severe acute respiratory syndrome coronavirus. *Clin Infect Dis* 2005; **41**: e67-e71 [PMID: [16142653](#) DOI: [10.1086/433186](#)]
 - 91 **Olusola-Makinde OO**, Reuben RC. Ticking bomb: Prolonged faecal shedding of novel coronavirus (2019-nCoV) and environmental implications. *Environ Pollut* 2020; **267**: 115485 [PMID: [33254708](#) DOI: [10.1016/j.envpol.2020.115485](#)]
 - 92 **Anelich LECM**, Lues R, Farber JM, Parreira VR. SARS-CoV-2 and Risk to Food Safety. *Front Nutr* 2020; **7**: 580551 [PMID: [33224968](#) DOI: [10.3389/fnut.2020.580551](#)]
 - 93 **Pandey D**, Verma S, Verma P, Mahanty B, Dutta K, Daverey A, Arunachalam K. SARS-CoV-2 in wastewater: Challenges for developing countries. *Int J Hyg Environ Health* 2021; **231**: 113634 [PMID: [33039922](#) DOI: [10.1016/j.ijheh.2020.113634](#)]
 - 94 **Sunkari ED**, Korboe HM, Abu M, Kizildeniz T. Sources and routes of SARS-CoV-2 transmission in water systems in Africa: Are there any sustainable remedies? *Sci Total Environ* 2021; **753**: 142298 [PMID: [33207460](#) DOI: [10.1016/j.scitotenv.2020.142298](#)]
 - 95 **Li YY**, Wang JX, Chen X. Can a toilet promote virus transmission? *Phys Fluids (1994)* 2020; **32**: 065107 [PMID: [32574232](#) DOI: [10.1063/5.0013318](#)]
 - 96 **Medema G**, Heijnen L, Elsinga G, Italiaander R, Brouwer A. Presence of SARS-Coronavirus-2 RNA in Sewage and Correlation with Reported COVID-19 Prevalence in the Early Stage of the Epidemic in The Netherlands. *Environ Sci Technol Lett* 2020; **7**: 511-516 [DOI: [10.1021/acs.estlett.0c00357](#)]
 - 97 **Ahmed W**, Angel N, Edson J, Bibby K, Bivins A, O'Brien JW, Choi PM, Kitajima M, Simpson SL, Li J, Tschärke B, Verhagen R, Smith WJM, Zaugg J, Dierens L, Hugenholtz P, Thomas KV, Mueller JF. First confirmed detection of SARS-CoV-2 in untreated wastewater in Australia: A proof of concept for the wastewater surveillance of COVID-19 in the community. *Sci Total Environ* 2020; **728**: 138764 [PMID: [32387778](#) DOI: [10.1016/j.scitotenv.2020.138764](#)]
 - 98 **Kumar M**, Patel AK, Shah AV, Raval J, Rajpara N, Joshi M, Joshi CG. First proof of the capability of wastewater surveillance for COVID-19 in India through detection of genetic material of SARS-CoV-2. *Sci Total Environ* 2020; **746**: 141326 [PMID: [32768790](#) DOI: [10.1016/j.scitotenv.2020.141326](#)]
 - 99 **Wurtzer S**, Marechal V, Mouchel JM, Maday Y, Teyssou R, Richard E, Almayrac JL, Moulin L. Time Course Quantitative Detection of SARS-CoV-2 in Parisian Wastewaters Correlates With COVID-19 Confirmed Cases. 2020 Preprint. Available from: medRxiv [DOI: [10.1101/2020.04.12.20062679](#)]
 - 100 **Randazzo W**, Truchado P, Cuevas-Ferrando E, Simón P, Allende A, Sánchez G. SARS-CoV-2 RNA in wastewater anticipated COVID-19 occurrence in a low prevalence area. *Water Res* 2020; **181**: 115942 [PMID: [32425251](#) DOI: [10.1016/j.watres.2020.115942](#)]
 - 101 **Kocamemi BA**, Kurt H, Sait A, Sarac F, Saatci AM, Pakdemirli B. SARS-CoV-2 Detection in Istanbul Wastewater Treatment Plant Sludges. 2020 Preprint. Available from: medRxiv [DOI: [10.1101/2020.05.12.20099358](#)]
 - 102 **Guerrero-Latorre L**, Ballesteros I, Villacrés-Granda I, Granda MG, Freire-Paspuel B, Ríos-Touma B. SARS-CoV-2 in river water: Implications in low sanitation countries. *Sci Total Environ* 2020; **743**: 140832 [PMID: [32679506](#) DOI: [10.1016/j.scitotenv.2020.140832](#)]
 - 103 **Zhang D**, Ling H, Huang X, Li J, Li W, Yi C, Zhang T, Jiang Y, He Y, Deng S, Zhang X, Wang X, Liu Y, Li G, Qu J. Potential spreading risks and disinfection challenges of medical wastewater by the presence of Severe Acute Respiratory Syndrome Coronavirus 2 (SARS-CoV-2) viral RNA in septic tanks of Fangcang Hospital. *Sci Total Environ* 2020; **741**: 140445 [PMID: [32599407](#) DOI: [10.1016/j.scitotenv.2020.140445](#)]

- 10.1016/j.scitotenv.2020.140445]
- 104 **Sherchan SP**, Shahin S, Ward LM, Tandukar S, Aw TG, Schmitz B, Ahmed W, Kitajima M. First detection of SARS-CoV-2 RNA in wastewater in North America: A study in Louisiana, USA. *Sci Total Environ* 2020; **743**: 140621 [PMID: [32758821](#) DOI: [10.1016/j.scitotenv.2020.140621](#)]
- 105 **Haramoto E**, Malla B, Thakali O, Kitajima M. First environmental surveillance for the presence of SARS-CoV-2 RNA in wastewater and river water in Japan. *Sci Total Environ* 2020; **737**: 140405 [PMID: [32783878](#) DOI: [10.1016/j.scitotenv.2020.140405](#)]
- 106 **La Rosa G**, Iaconelli M, Mancini P, Bonanno Ferraro G, Veneri C, Bonadonna L, Lucentini L, Suffredini E. First detection of SARS-CoV-2 in untreated wastewaters in Italy. *Sci Total Environ* 2020; **736**: 139652 [PMID: [32464333](#) DOI: [10.1016/j.scitotenv.2020.139652](#)]
- 107 **Hasan SW**, Ibrahim Y, Daou M, Kannout H, Jan N, Lopes A, Alsafar H, Yousef AF. Detection and quantification of SARS-CoV-2 RNA in wastewater and treated effluents: Surveillance of COVID-19 epidemic in the United Arab Emirates. *Sci Total Environ* 2021; **764**: 142929 [PMID: [33131867](#) DOI: [10.1016/j.scitotenv.2020.142929](#)]
- 108 **Arslan M**, Xu B, Gamal El-Din M. Transmission of SARS-CoV-2 *via* fecal-oral and aerosols-borne routes: Environmental dynamics and implications for wastewater management in underprivileged societies. *Sci Total Environ* 2020; **743**: 140709 [PMID: [32652357](#) DOI: [10.1016/j.scitotenv.2020.140709](#)]
- 109 **World Health Organization and United Nations Children's Fund**. Progress on drinking water, sanitation and hygiene: 2017 update and SDG baselines. [cited 15 December 2020]. Available from: <https://apps.who.int/iris/handle/10665/258617>
- 110 **Saawarn B**, Hait S. Occurrence, fate and removal of SARS-CoV-2 in wastewater: Current knowledge and future perspectives. *J Environ Chem Eng* 2021; **9**: 104870 [PMID: [33282675](#) DOI: [10.1016/j.jece.2020.104870](#)]
- 111 **Mohan N**, Deswal S. Corona Virus Disease (COVID-19) Fecal-oral transmission: Is it a potential risk for Indians? *Indian J Gastroenterol* 2020; **39**: 305-306 [PMID: [32710226](#) DOI: [10.1007/s12664-020-01072-5](#)]



Published by **Baishideng Publishing Group Inc**
7041 Koll Center Parkway, Suite 160, Pleasanton, CA 94566, USA

Telephone: +1-925-3991568

E-mail: bpgoffice@wjgnet.com

Help Desk: <https://www.f6publishing.com/helpdesk>

<https://www.wjgnet.com>

