

World Journal of *Clinical Cases*

World J Clin Cases 2021 January 26; 9(3): 521-763



Contents

Thrice Monthly Volume 9 Number 3 January 26, 2021

MINIREVIEWS

- 521 Role of argon plasma coagulation in treatment of esophageal varices
Song Y, Feng Y, Sun LH, Zhang BJ, Yao HJ, Qiao JG, Zhang SF, Zhang P, Liu B
- 528 Clinical features and potential mechanism of coronavirus disease 2019-associated liver injury
Han MW, Wang M, Xu MY, Qi WP, Wang P, Xi D

ORIGINAL ARTICLE

Retrospective Study

- 540 Circulating immune parameters-based nomogram for predicting malignancy in laryngeal neoplasm
Chen M, Fang Y, Yang Y, He PJ, Cheng L, Wu HT
- 552 Role of ammonia in predicting the outcome of patients with acute-on-chronic liver failure
Chiriac S, Stanciu C, Cojocariu C, Singeap AM, Sfarti C, Cuciureanu T, Girleanu I, Igna RA, Trifan A
- 565 Impact of different stereoisomers of inositol on insulin sensitivity of gestational diabetes mellitus patients
He J, Zhang YL, Wang LP, Liu XC

Observational Study

- 573 Fascial space odontogenic infections: Ultrasonography as an alternative to magnetic resonance imaging
Ghali S, Katti G, Shahbaz S, Chitroda PK, V Anukriti, Divakar DD, Khan AA, Naik S, Al-Kheraif AA, Jhugroo C

SYSTEMATIC REVIEWS

- 581 Clinical benefit of COX-2 inhibitors in the adjuvant chemotherapy of advanced non-small cell lung cancer: A systematic review and meta-analysis
Xu YQ, Long X, Han M, Huang MQ, Lu JF, Sun XD, Han W

CASE REPORT

- 602 Delayed cardiac tamponade diagnosed by point-of-care ultrasound in a neonate after peripherally inserted central catheter placement: A case report
Cui Y, Liu K, Luan L, Liang P
- 607 Facial microcystic adnexal carcinoma — treatment with a “jigsaw puzzle” advancement flap and immediate esthetic reconstruction: A case report
Xiao YD, Zhang MZ, Zeng A
- 614 Nephrotic syndrome in syngeneic hematopoietic stem cell transplantation recipients: A case report
Bai MC, Wu JJ, Miao KR, Zhu JF, Mao HJ

- 623** Compound heterozygous mutations in the neuraminidase 1 gene in type 1 sialidosis: A case report and review of literature
Cao LX, Liu Y, Song ZJ, Zhang BR, Long WY, Zhao GH
- 632** Dynamic biomechanical effect of lower body positive pressure treadmill training for hemiplegic gait rehabilitation after stroke: A case report
Tang HF, Yang B, Lin Q, Liang JJ, Mou ZW
- 639** Right-heart contrast echocardiography reveals missed patent ductus arteriosus in a postpartum woman with pulmonary embolism: A case report
Chen JL, Mei DE, Yu CG, Zhao ZY
- 644** Treatment of cervical spine metastasis with minimally invasive cervical spondylectomy: A case report and literature review
He LM, Ma X, Chen C, Zhang HY
- 651** Successful treatment of pyogenic ventriculitis caused by extensively drug-resistant *Acinetobacter baumannii* with multi-route tigecycline: A case report
Li W, Li DD, Yin B, Lin DD, Sheng HS, Zhang N
- 659** Radical resection of hepatic polycystic echinococcosis complicated with hepatocellular carcinoma: A case report
Kalifu B, Meng Y, Maimaitinijati Y, Ma ZG, Tian GL, Wang JG, Chen X
- 666** Pleural lump after paragonimiasis treated by thoracoscopy: A case report
Xie Y, Luo YR, Chen M, Xie YM, Sun CY, Chen Q
- 672** Deep vein thrombosis in patient with left-sided inferior vena cava draining into the hemiazygos vein: A case report
Zhang L, Guan WK
- 677** Recurrent Takotsubo cardiomyopathy triggered by emotionally stressful events: A case report
Wu HY, Cheng G, Liang L, Cao YW
- 685** Oral and perioral herpes simplex virus infection type I in a five-month-old infant: A case report
Aloyouny AY, Albagieh HN, Al-Serwi RH
- 690** Nasal septal foreign body as a complication of dental root canal therapy: A case report
Du XW, Zhang JB, Xiao SF
- 697** Coinheritance of *OLFM2* and *SIX6* variants in a Chinese family with juvenile-onset primary open-angle glaucoma: A case report
Yang X, Sun NN, Zhao ZN, He SX, Zhang M, Zhang DD, Yu XW, Zhang JM, Fan ZG
- 707** Systemic lupus erythematosus and antineutrophil cytoplasmic antibody-associated vasculitis overlap syndrome in a 77-year-old man: A case report
Xu ZG, Li WL, Wang X, Zhang SY, Zhang YW, Wei X, Li CD, Zeng P, Luan SD

- 714** Clinical cure and liver fibrosis reversal after postoperative antiviral combination therapy in hepatitis B-associated non-cirrhotic hepatocellular carcinoma: A case report
Yu XP, Lin Q, Huang ZP, Chen WS, Zheng MH, Zheng YJ, Li JL, Su ZJ
- 722** Severe skeletal bimaxillary protrusion treated with micro-implants and a self-made four-curvature torquing auxiliary: A case report
Liu R, Hou WB, Yang PZ, Zhu L, Zhou YQ, Yu X, Wen XJ
- 736** Cystic duct dilation through endoscopic retrograde cholangiopancreatography for treatment of gallstones and choledocholithiasis: Six case reports and review of literature
He YG, Gao MF, Li J, Peng XH, Tang YC, Huang XB, Li YM
- 748** Infectious complications during immunochemotherapy of post-transplantation lymphoproliferative disease—can we decrease the risk? Two case reports and review of literature
Gładys A, Kozak S, Wdowiak K, Winder M, Chudek J
- 758** Restenosis of a drug eluting stent on the previous bioresorbable vascular scaffold successfully treated with a drug-coated balloon: A case report
Jang HG, Kim K, Park HW, Koh JS, Jeong YH, Park JR, Kang MG

ABOUT COVER

Editorial Board Member of *World Journal of Clinical Cases*, Dr. Marcelo A F Ribeiro Jr. is Full Professor of Surgery at Pontifical Catholic University – PUC Sorocaba – General and Trauma Surgery, and Professor of the Post-Graduation Program in Surgery, IAMSPE São Paulo (Brazil). He serves as Member and Fellow of the Brazilian College of Surgeons, Brazilian College of Digestive Surgery, Brazilian Trauma Society (General Secretary), American College of Surgeons, American Association for the Surgery of Trauma, Eastern Association for the Surgery of Trauma, and Pan-American Trauma Society (being Chairman of the Education Committee and Member of the Board). (L-Editor: Filipodia)

AIMS AND SCOPE

The primary aim of *World Journal of Clinical Cases* (*WJCC*, *World J Clin Cases*) is to provide scholars and readers from various fields of clinical medicine with a platform to publish high-quality clinical research articles and communicate their research findings online.

WJCC mainly publishes articles reporting research results and findings obtained in the field of clinical medicine and covering a wide range of topics, including case control studies, retrospective cohort studies, retrospective studies, clinical trials studies, observational studies, prospective studies, randomized controlled trials, randomized clinical trials, systematic reviews, meta-analysis, and case reports.

INDEXING/ABSTRACTING

The *WJCC* is now indexed in Science Citation Index Expanded (also known as SciSearch®), Journal Citation Reports/Science Edition, Scopus, PubMed, and PubMed Central. The 2020 Edition of Journal Citation Reports® cites the 2019 impact factor (IF) for *WJCC* as 1.013; IF without journal self cites: 0.991; Ranking: 120 among 165 journals in medicine, general and internal; and Quartile category: Q3. The *WJCC*'s CiteScore for 2019 is 0.3 and Scopus CiteScore rank 2019: General Medicine is 394/529.

RESPONSIBLE EDITORS FOR THIS ISSUE

Production Editor: Ji-Hong Lin; Production Department Director: Xiang Li; Editorial Office Director: Jin-Lai Wang.

NAME OF JOURNAL

World Journal of Clinical Cases

ISSN

ISSN 2307-8960 (online)

LAUNCH DATE

April 16, 2013

FREQUENCY

Thrice Monthly

EDITORS-IN-CHIEF

Dennis A Bloomfield, Sandro Vento, Bao-gan Peng

EDITORIAL BOARD MEMBERS

<https://www.wjgnet.com/2307-8960/editorialboard.htm>

PUBLICATION DATE

January 26, 2021

COPYRIGHT

© 2021 Baishideng Publishing Group Inc

INSTRUCTIONS TO AUTHORS

<https://www.wjgnet.com/bpg/gerinfo/204>

GUIDELINES FOR ETHICS DOCUMENTS

<https://www.wjgnet.com/bpg/GerInfo/287>

GUIDELINES FOR NON-NATIVE SPEAKERS OF ENGLISH

<https://www.wjgnet.com/bpg/gerinfo/240>

PUBLICATION ETHICS

<https://www.wjgnet.com/bpg/GerInfo/288>

PUBLICATION MISCONDUCT

<https://www.wjgnet.com/bpg/gerinfo/208>

ARTICLE PROCESSING CHARGE

<https://www.wjgnet.com/bpg/gerinfo/242>

STEPS FOR SUBMITTING MANUSCRIPTS

<https://www.wjgnet.com/bpg/GerInfo/239>

ONLINE SUBMISSION

<https://www.f6publishing.com>

Radical resection of hepatic polycystic echinococcosis complicated with hepatocellular carcinoma: A case report

Baheti Kalifu, Yuan Meng, Yusufkadier Maimaitinijati, Zhi-Gang Ma, Guang-Lei Tian, Jin-Guo Wang, Xiong Chen

ORCID number: Baheti kalifu 0000-0003-4781-5859; Yuan Meng 0000-0002-2028-1175; Yusufkadier Maimaitinijati 0000-0003-2069-9202; Zhi-Gang Ma 0000-0003-4412-7487; Guang-Lei Tian 0000-0003-3166-7245; Jin-Guo Wang 0000-0003-4169-5203; Xiong Chen 0000-0003-2038-4501.

Author contributions: Kalifu B and Maimaitinijati Y designed and wrote the manuscript; Meng Y and Ma ZG performed the operation; Wang JG and Tian GL contributed to provision of study material; Chen X contributed to final approval of the version to be submitted; All authors have read and approve the final manuscript.

Supported by Project Plan of People's Hospital of Xinjiang Uyghur Autonomous Region, No. 20190412 and No. 20190405.

Informed consent statement: All study participants, or their legal guardian, provided informed written consent prior to study enrollment.

Conflict-of-interest statement: The authors declare that they have no conflicts of interest.

CARE Checklist (2016) statement: The authors have read the CARE Checklist (2016), and the

Baheti Kalifu, Yuan Meng, Yusufkadier Maimaitinijati, Zhi-Gang Ma, Guang-Lei Tian, Jin-Guo Wang, Xiong Chen, Department of Hepatobiliary Surgery, People's Hospital of Xinjiang Uygur Autonomous Region, Urumqi 830001, Xinjiang Uygur Autonomous Region, China

Corresponding author: Xiong Chen, MD, PhD, Doctor, Department of Hepatobiliary Surgery, People's Hospital of Xinjiang Uygur Autonomous Region, No. 91 Tianchi Road, Urumqi 830001, Xinjiang Uygur Autonomous Region, China. 1512237458@qq.com

Abstract

BACKGROUND

Hepatic cystic echinococcosis (CE) is an infectious zoonotic parasitic disease, and the insidious onset and slow progression of hepatic CE usually contributes to delayed diagnosis and treatment. Hepatocellular carcinoma (HCC) is the fourth most common malignant tumor. Co-existence of CE and HCC is fairly rare in clinical settings and the association between the two is still not well recognized. We report a case of hepatic CE complicated with HCC which are radically resected and raise some questions worth thinking about.

CASE SUMMARY

A 70-year-old man presented with upper abdominal pain. On admission, laboratory data showed that, except for hepatitis B surface antigen positivity, other indicators were normal, including alpha-fetoprotein. Computed tomography of the abdomen revealed a huge polycystic lesion in left liver lobe, without reinforcement after enhanced scanning and sized about 16.9 cm × 12.2 cm, which was considered a type II hydatid cyst. Multiple small solid lesions were also found adjacent to it, and thus it was highly suspected as a malignant tumor. After a multidisciplinary team discussion, the diagnosis of co-occurrence of hepatic CE and HCC was made. According to Romic classification, the case belongs to type IIb, and radical left hemi-hepatectomy was performed. Postoperative pathological examination revealed CE co-existence with well-differentiated HCC, consistent with the preoperative diagnosis.

CONCLUSION

With the combination of hepatitis B and obvious extrusion by large hydatid, the HCC risk of a patient might be higher.

Key Words: Hepatocellular carcinoma; Cystic echinococcosis; Radical resection; Co-

manuscript was prepared and revised according to the CARE Checklist (2016).

Open-Access: This article is an open-access article that was selected by an in-house editor and fully peer-reviewed by external reviewers. It is distributed in accordance with the Creative Commons Attribution NonCommercial (CC BY-NC 4.0) license, which permits others to distribute, remix, adapt, build upon this work non-commercially, and license their derivative works on different terms, provided the original work is properly cited and the use is non-commercial. See: <http://creativecommons.org/licenses/by-nc/4.0/>

Manuscript source: Unsolicited manuscript

Specialty type: Medicine, research and experimental

Country/Territory of origin: China

Peer-review report's scientific quality classification

Grade A (Excellent): 0
Grade B (Very good): 0
Grade C (Good): C, C
Grade D (Fair): D
Grade E (Poor): 0

Received: September 2, 2020

Peer-review started: September 2, 2020

First decision: November 8, 2020

Revised: November 21, 2020

Accepted: December 6, 2020

Article in press: December 6, 2020

Published online: January 26, 2021

P-Reviewer: El-Hawary AK, Hashimoto N

S-Editor: Huang P

L-Editor: Filipodia

P-Editor: Li JH



existence; Parasitic disease; Case report; Hepatitis B

©The Author(s) 2021. Published by Baishideng Publishing Group Inc. All rights reserved.

Core Tip: Hepatic cystic echinococcosis (CE) is an infectious zoonotic parasitic disease, hepatocellular carcinoma (HCC) is the fourth most common malignant tumor. Co-existence of CE and HCC is fairly rare in clinical settings and the association between the two is still not well recognized. We report a case of hepatic CE complicated with HCC which are radically resected, and present an opinion that with the combination of hepatitis B and obvious extrusion by large hydatid, the HCC risk of the patients might be higher.

Citation: Kalifu B, Meng Y, Maimaitiniyati Y, Ma ZG, Tian GL, Wang JG, Chen X. Radical resection of hepatic polycystic echinococcosis complicated with hepatocellular carcinoma: A case report. *World J Clin Cases* 2021; 9(3): 659-665

URL: <https://www.wjgnet.com/2307-8960/full/v9/i3/659.htm>

DOI: <https://dx.doi.org/10.12998/wjcc.v9.i3.659>

INTRODUCTION

Cystic echinococcosis (CE) is caused by *Echinococcus granulosus* (*E. granulosus*), an infectious parasitic disease. Liver is the most affected organ due to the special life cycle of *E. granulosus*^[1,2]. In recent years, with the development of tourism and the movement of populations, hepatic CE has become a serious public health problem around the world. In endemic areas, the incidence of cystic hydatid disease is 1-200/100000 per year, and fatality rate has been reported as 2%-4%^[3]. Hepatocellular carcinoma (HCC) is the most frequent primary liver cancer, accounting for more than 85%-90% of them, and is a leading cause of cancer-related mortality^[4]. Although both are hepatic space-occupying diseases, it is rare to co-occur, due to their biological characteristics. There have been few reports concerning hepatic CE accompanied by HCC^[5,6]. Whether hydatid infection impacts the occurrence and progression of HCC is still unclear.

Here, we share a case of huge hepatic CE lesion complicated with HCC, and present some controversial issues with detailed discussion.

CASE PRESENTATION

Chief complaints

A 70-year-old man presented to The Department of Hepatobiliary Surgery, People's Hospital of Xinjiang Uygur Autonomous Region, with complaint of upper abdominal pain for 2 wk.

History of present illness

The patient had upper abdominal pain for 2 wk, and no another special discomfort symptom.

History of past illness

The patient had no significant past illness.

Personal and family history

The patient had no significant personal and family history.

Physical examination

The physical examination was significant for pain in the right upper quadrant upon palpation.

Laboratory examinations

All laboratory testing, including glutamic-pyruvic transaminase, glutamic-oxalacetic transaminase, gamma-glutamyl transpeptidase, and alpha-fetoprotein, was normal, except for positivity for hepatitis B surface antigen.

Imaging examinations

Computed tomography of the abdomen revealed a huge polycystic lesion in left liver lobe, without reinforcement after enhanced scanning, sized about 16.9 cm × 12.2 cm (Figure 1), which was considered a type II hydatid cyst^[7]. Multiple small solid lesions were also found adjacent to it, and thus it was highly suspected as malignant tumor.

MULTIDISCIPLINARY EXPERT CONSULTATION

After a multidisciplinary team discussion, the preoperative diagnosis was made of co-occurrence of hepatic polycystic echinococcosis and HCC. According to Romic classification^[8], the case was type IIb. The postoperative pathological examination revealed CE co-existence with well-differentiated HCC (Figure 2), consistent with the preoperative diagnosis.

FINAL DIAGNOSIS

Co-occurrence of hepatic polycystic echinococcosis and HCC.

TREATMENT

Radical left hemi-hepatectomy was performed (Figure 3).

OUTCOME AND FOLLOW-UP

The patient recovered and was discharged on the eighth day after the operation and no treatment was received after discharge. The magnetic resonance imaging conducted at 3 mo after surgery showed no significant recurrence of the lesion (Figure 4).

DISCUSSION

Hepatic CE and HCC are both liver space-occupying diseases with high incidence, whereas the concomitant presence of hepatic CE and HCC is a fairly rare scenario, leaving evidence-based options of treatments unavailable worldwide. Based on the World Health Organization Informal Working Group on Echinococcosis (known as WHO-IWGE) international classification^[7], the current case belongs to the type II hydatid cysts, for which radical resection is recommended to be performed in the guideline. The BCLC staging system is the method currently used to stage HCC and widely accepted as a therapeutic guidance. For the current patient, there were more than three tumors with the size of 35 mm, and the case was considered as intermediate-staged HCC (stage B); furthermore, the lesions were located in the same lobe of the liver. Hemihepatectomy is advised by the European Association for the Study of the Liver clinical practice guideline^[9] and the American guideline (2018)^[10] for such cases. By applying the guidelines for both diseases, the radical left hemihepatectomy was performed and albendazole therapy for CE and HCC adjuvant therapy were not recommended after surgery. In addition, entecavir was administered since the hepatitis B surface antigen test was positive.

To our knowledge, there are few studies on co-infection of CE and HCC and the association between the two is still not well recognized. There are 25 cases reported concerning concomitant HCC and echinococcal cysts in the scientific literature worldwide and 20 of them have provided sufficient data for review analysis. The patients represent 12 males and 8 females, aged from 27 years to 82 years, with an average age of 67. Fifteen of them had underlying chronic liver diseases. It has been

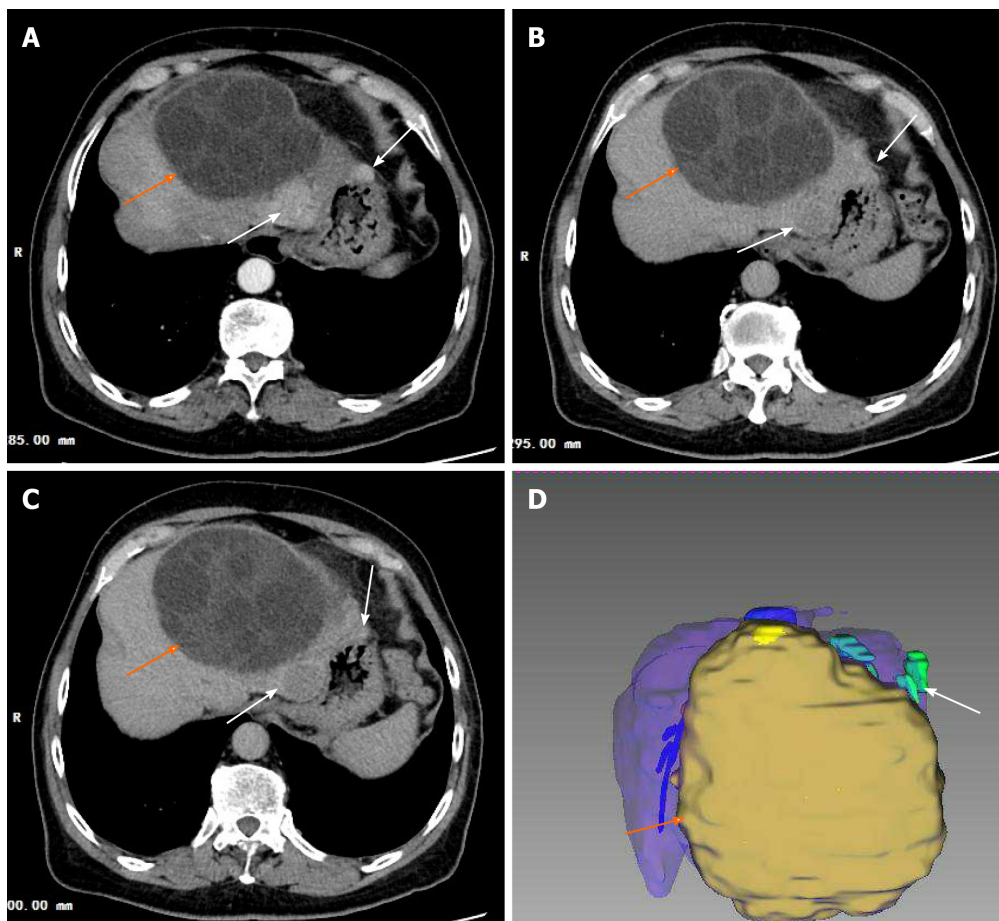


Figure 1 Preoperative images. A polycystic cystic echinococcosis (CE) lesion complicated with multiple hepatocellular carcinoma (HCC) nodules in the left lobe of liver (orange arrow represents hepatic CE lesion; white arrow represents HCC lesions). A: Computed tomography (CT) in the arterial phase showing obvious enhancement of the HCC lesions; B: The portal phase of CT revealed a washed-out pattern of the HCC lesions; C: A delayed CT scan showed HCC lesions without significantly retention; D: IQQA-Liver system three-dimensional reconstruction image.

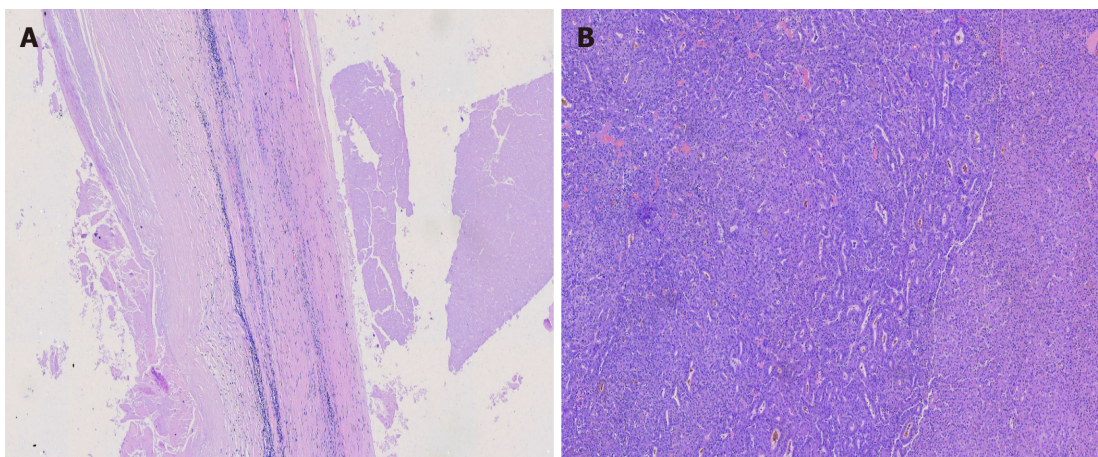


Figure 2 Microscopic histopathology images (× 100). A: Section of specimens showed complete cyst wall structure, consistent with histopathological characteristics of cystic echinococcosis; B: Multiple highly differentiated cancer cells are found in the section specimens.

reported that CE infection may lead to the development of liver carcinoma^[11,12]. By contrast, van Knapen^[13] put forward the hypothesis that echinococcus infection could suppress tumor growth. Recently, Bo *et al*^[14] reported 13 patients with co-existence of hepatic CE and HCC, being the report with the largest number of cases at present. Those authors consider that *E. granulosus* may elicit a protective effect against the development and progression of HCC.

The most common cause of HCC is liver cirrhosis caused by hepatitis and other

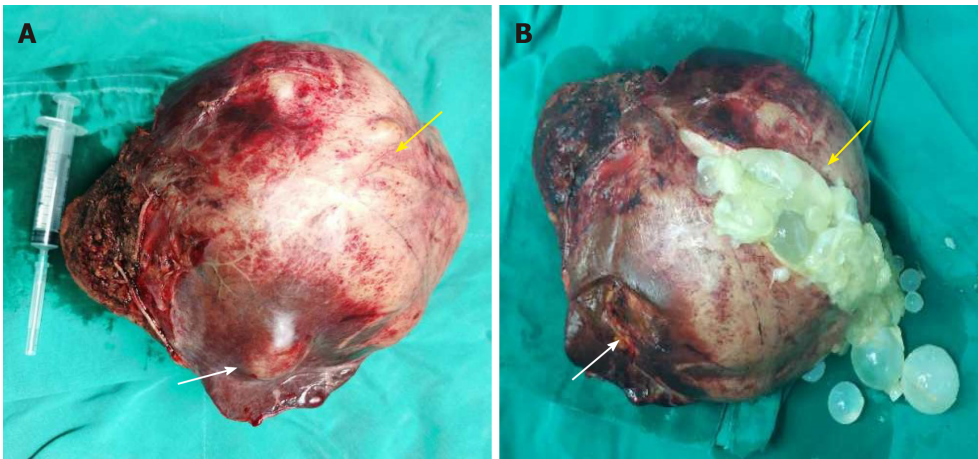


Figure 3 Intraoperative photos. A and B: The yellow arrows represent hepatic cystic echinococcosis lesions and the white arrows represent hepatocellular carcinoma lesions.

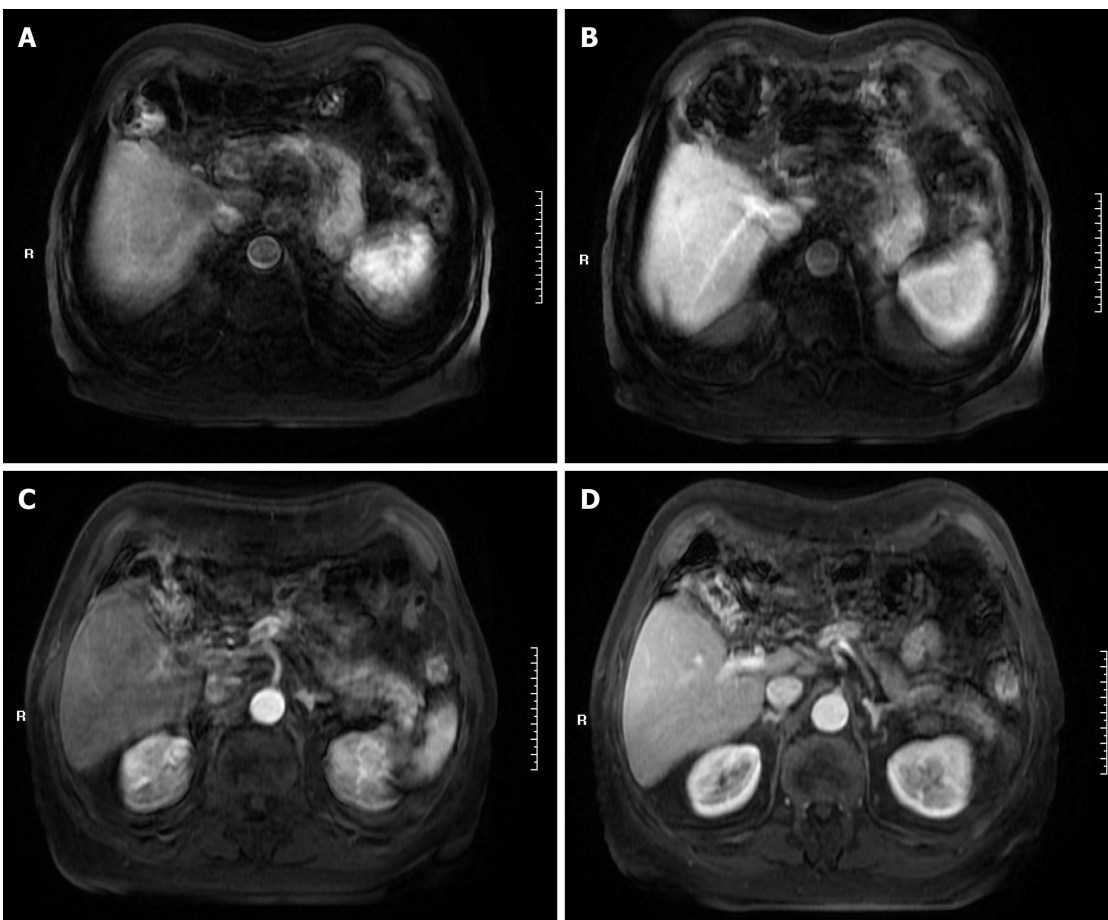


Figure 4 Magnetic resonance images 3 mo after surgery, showing no significant recurrence lesion (A-D).

causes^[15]. Although our case showed evidence of hepatitis B, there was no cirrhosis or elevation of alpha-fetoprotein. In addition, the tumors were located in the hydatid peripheral normal liver tissues, and there was no tumor in the right lobe of the liver. Therefore, we speculate that a chronic inflammatory reaction of liver tissue around the cyst, especially in the extruded area, may have led to increased risk of HCC development.

CONCLUSION

Based on the case and literature review described herein, the current knowledge may raise a hypothesis that human CE may induce the development of HCC, and increased cyst size and hepatitis B may increase the risk of such. When there is combination of hepatitis B and obvious extrusion by a large hydatid, the HCC risk of the patients might be higher. Nonetheless, further studies are needed to clarify the assumption.

REFERENCES

- 1 **Wen H**, Vuitton L, Tuxun T, Li J, Vuitton DA, Zhang W, McManus DP. Echinococcosis: Advances in the 21st Century. *Clin Microbiol Rev* 2019; **32** [PMID: 30760475 DOI: 10.1128/CMR.00075-18]
- 2 **Kern P**, Menezes da Silva A, Akhan O, Müllhaupt B, Vizcaychipi KA, Budke C, Vuitton DA. The Echinococcoses: Diagnosis, Clinical Management and Burden of Disease. *Adv Parasitol* 2017; **96**: 259-369 [PMID: 28212790 DOI: 10.1016/bs.apar.2016.09.006]
- 3 **Deplazes P**, Rinaldi L, Alvarez Rojas CA, Torgerson PR, Harandi MF, Romig T, Antolova D, Schurer JM, Lahmar S, Cringoli G, Magambo J, Thompson RC, Jenkins EJ. Global Distribution of Alveolar and Cystic Echinococcosis. *Adv Parasitol* 2017; **95**: 315-493 [PMID: 28131365 DOI: 10.1016/bs.apar.2016.11.001]
- 4 **Global Burden of Disease Cancer Collaboration**, Fitzmaurice C, Allen C, Barber RM, Barregard L, Bhutta ZA, Brenner H, Dicker DJ, Chimed-Orchir O, Dandona R, Dandona L, Fleming T, Forouzanfar MH, Hancock J, Hay RJ, Hunter-Merrill R, Huynh C, Hosgood HD, Johnson CO, Jonas JB, Khubchandani J, Kumar GA, Kutz M, Lan Q, Larson HJ, Liang X, Lim SS, Lopez AD, MacIntyre MF, Marczak L, Marquez N, Mokdad AH, Pinho C, Pourmalek F, Salomon JA, Sanabria JR, Sandar L, Sartorius B, Schwartz SM, Shackelford KA, Shibuya K, Stanaway J, Steiner C, Sun J, Takahashi K, Vollset SE, Vos T, Wagner JA, Wang H, Westerman R, Zeeb H, Zoeckler L, Abd-Allah F, Ahmed MB, Alabed S, Alam NK, Aldhahri SF, Alem G, Alemayohu MA, Ali R, Al-Raddadi R, Amare A, Amoako Y, Artaman A, Asayesh H, Atnafu N, Awasthi A, Saleem HB, Barac A, Bedi N, Bensenor I, Berhane A, Bernabé E, Betsu B, Binagwah A, Boneya D, Campos-Nonato I, Castañeda-Orjuela C, Catalá-López F, Chiang P, Chibueze C, Chittheer A, Choi JY, Cowie B, Damtew S, das Neves J, Dey S, Dharmaratne S, Dhillon P, Ding E, Driscoll T, Ekwueme D, Endries AY, Farvid M, Farzadfar F, Fernandes J, Fischer F, G/Hiwot TT, Gebru A, Gopalani S, Hailu A, Horino M, Horita N, Hussein A, Huybrechts I, Inoue M, Islami F, Jakovljevic M, James S, Javanbakht M, Jee SH, Kasaeian A, Kedir MS, Khader YS, Khang YH, Kim D, Leigh J, Linn S, Lunevicius R, El Razek HMA, Malekzadeh R, Malta DC, Marcenes W, Markos D, Melaku YA, Meles KG, Mendoza W, Mengiste DT, Meretoja TJ, Miller TR, Mohammad KA, Mohammadi A, Mohammed S, Moradi-Lakeh M, Nagel G, Nand D, Le Nguyen Q, Nolte S, Ogbo FA, Oladimeji KE, Oren E, Pa M, Park EK, Pereira DM, Plass D, Qorbani M, Radfar A, Rafay A, Rahman M, Rana SM, Soreide K, Satpathy M, Sawhney M, Sepanlou SG, Shaikh MA, She J, Shiue I, Shore HR, Shrive MG, So S, Soneji S, Stathopoulou V, Stroupoulis K, Sufiyan MB, Sykes BL, Tabarés-Seisdedos R, Tadese F, Tedla BA, Tessema GA, Thakur JS, Tran BX, Ukwaja KN, Uzochukwu BSC, Vlassov VV, Weiderpass E, Wubshet Terefe M, Yebo HG, Yimam HH, Yonemoto N, Younis MZ, Yu C, Zaidi Z, Zaki MES, Zenebe ZM, Murray CJL, Naghavi M. Global, Regional, and National Cancer Incidence, Mortality, Years of Life Lost, Years Lived With Disability, and Disability-Adjusted Life-years for 32 Cancer Groups, 1990 to 2015: A Systematic Analysis for the Global Burden of Disease Study. *JAMA Oncol* 2017; **3**: 524-548 [PMID: 27918777 DOI: 10.1001/jamaoncol.2016.5688]
- 5 **Sygut A**, Górski A, Dziki A. [A case of coexistence of primary cancer of the liver and hepatic echinococcosis]. *Wiad Lek* 1987; **40**: 826-828 [PMID: 2825436]
- 6 **Kato T**, Seino Y, Takada K, Maruya M, Okubo S, Nakamura H, Inoue Y, Meguro T, Horita S, Oshikiri T, Yamada H, Miyasaka Y, Fujita M, Morita T, Yoshida T, Chikai K. [A resectable case of hepatocellular carcinoma complicated with hepatic alveolar echinococcosis]. *Nihon Shokakibyō Gakkai Zasshi* 2003; **100**: 587-592 [PMID: 12772575]
- 7 **WHO Informal Working Group**. International classification of ultrasound images in cystic echinococcosis for application in clinical and field epidemiological settings. *Acta Trop* 2003; **85**: 253-261 [PMID: 12606104 DOI: 10.1016/S0001-706X(02)00223-1]
- 8 **Romic B**, Romic I, Petrovic I, Romic M, Romic M, Mance M, Pavlek G; -. A Synchronous Occurrence of Hepatocellular Carcinoma and Echinococcal Liver Cyst - Can Parasite Promote Carcinogenesis? *Chirurgia (Bucur)* 2016; **111**: 297-303 [PMID: 27604665]
- 9 **European Association for the Study of the Liver**. EASL Clinical Practice Guidelines: Management of hepatocellular carcinoma. *J Hepatol* 2018; **69**: 182-236 [PMID: 29628281 DOI: 10.1016/j.jhep.2018.03.019]
- 10 **Marrero JA**, Kulik LM, Sirlin CB, Zhu AX, Finn RS, Abecassis MM, Roberts LR, Heimbach JK. Diagnosis, Staging, and Management of Hepatocellular Carcinoma: 2018 Practice Guidance by the American Association for the Study of Liver Diseases. *Hepatology* 2018; **68**: 723-750 [PMID: 29624699 DOI: 10.1002/hep.29913]
- 11 **Li H**, Song T, Shao Y, Wen H. Cystic echinococcosis accompanied by hepatocellular carcinoma in a female herdsman. *Int J Clin Exp Med* 2015; **8**: 2985-2988 [PMID: 25932268]

- 12 **Oikonomopoulou K**, Yu H, Wang Z, Vasiliou SK, Brinc D, Christofi G, Theodorou M, Pavlou P, Hadjisavvas A, Demetriou CA, Kyriacou K, Diamandis EP. Association between Echinococcus granulosus infection and cancer risk - a pilot study in Cyprus. *Clin Chem Lab Med* 2016; **54**: 1955-1961 [PMID: [27327131](#) DOI: [10.1515/ccbm-2016-0125](#)]
- 13 **van Knapen F**. Echinococcus granulosus infection and malignancy. *Br Med J* 1980; **281**: 195-196 [PMID: [7407519](#) DOI: [10.1136/bmj.281.6234.195](#)]
- 14 **Bo R**, Yasen A, Shao Y, Zhang W, Lin R, Jiang T, Wen H, Xiao H, Aji T. Co-existence of hepatocellular carcinoma and cystic echinococcosis. *Infect Agent Cancer* 2020; **15**: 5 [PMID: [32010203](#) DOI: [10.1186/s13027-020-0275-0](#)]
- 15 **El-Serag HB**. Hepatocellular carcinoma. *N Engl J Med* 2011; **365**: 1118-1127 [PMID: [21992124](#) DOI: [10.1056/NEJMra1001683](#)]



Published by **Baishideng Publishing Group Inc**
7041 Koll Center Parkway, Suite 160, Pleasanton, CA 94566, USA

Telephone: +1-925-3991568

E-mail: bpgoffice@wjgnet.com

Help Desk: <https://www.f6publishing.com/helpdesk>

<https://www.wjgnet.com>

