

World Journal of *Clinical Cases*

World J Clin Cases 2021 November 6; 9(31): 9320-9698



Contents

Thrice Monthly Volume 9 Number 31 November 6, 2021

FRONTIER

- 9320 Gut-liver axis in cirrhosis: Are hemodynamic changes a missing link?

Maslennikov R, Ivashkin V, Efremova I, Poluektova E, Shirokova E

REVIEW

- 9333 Pharmaconutrition strategy to resolve SARS-CoV-2-induced inflammatory cytokine storm in non-alcoholic fatty liver disease: Omega-3 long-chain polyunsaturated fatty acids

Jeyakumar SM, Vajreswari A

- 9350 Major depressive disorder: Validated treatments and future challenges

Karroui R, Hammani Z, Benjelloun R, Otheman Y

MINIREVIEWS

- 9368 Gene × environment interaction in major depressive disorder

Zhao MZ, Song XS, Ma JS

- 9376 Deep learning driven colorectal lesion detection in gastrointestinal endoscopic and pathological imaging

Cai YW, Dong FF, Shi YH, Lu LY, Chen C, Lin P, Xue YS, Chen JH, Chen SY, Luo XB

ORIGINAL ARTICLE

Case Control Study

- 9386 Cognitive behavioral therapy on personality characteristics of cancer patients

Yuan XH, Peng J, Hu SW, Yang Y, Bai YJ

Retrospective Cohort Study

- 9395 Extrapneumonic necrosis volume: A new tool in acute pancreatitis severity assessment?

Cucuteanu B, Negru D, Gavrilescu O, Popa IV, Floria M, Mihai C, Cijevschi Prelipcean C, Dranga M

- 9406 Establishment of a risk assessment score for deep vein thrombosis after artificial liver support system treatment

Ye Y, Li X, Zhu L, Yang C, Tan YW

Retrospective Study

- 9417 Clinical management and susceptibility of primary hepatic lymphoma: A cases-based retrospective study

Hai T, Zou LQ

- 9431 Association of serum pepsinogen with degree of gastric mucosal atrophy in an asymptomatic population

Cai HL, Tong YL

- 9440** Risk factors for relapse and nomogram for relapse probability prediction in patients with minor ischemic stroke

Yu XF, Yin WW, Huang CJ, Yuan X, Xia Y, Zhang W, Zhou X, Sun ZW

- 9452** Incidence, prognosis, and risk factors of sepsis-induced cardiomyopathy

Liang YW, Zhu YF, Zhang R, Zhang M, Ye XL, Wei JR

- 9469** Associations with pancreatic exocrine insufficiency: An United Kingdom single-centre study

Shandro BM, Chen J, Ritehnia J, Poullis A

- 9481** Retrospective analysis of influencing factors on the efficacy of mechanical ventilation in severe and critical COVID-19 patients

Zeng J, Qi XX, Cai WW, Pan YP, Xie Y

Observational Study

- 9491** Vitamin D deficiency, functional status, and balance in older adults with osteoarthritis

Montemor CN, Fernandes MTP, Marquez AS, Poli-Frederico RC, da Silva RA, Fernandes KBP

- 9500** Psychological impact of the COVID-19 pandemic on Chinese population: An online survey

Shah T, Shah Z, Yasmeen N, Ma ZR

- 9509** Outcomes of different minimally invasive surgical treatments for vertebral compression fractures: An observational study

Yeh KL, Wu SH, Liaw CK, Hou SM, Wu SS

META-ANALYSIS

- 9520** Glycated albumin as a biomarker for diagnosis of diabetes mellitus: A systematic review and meta-analysis

Xiong JY, Wang JM, Zhao XL, Yang C, Jiang XS, Chen YM, Chen CQ, Li ZY

CASE REPORT

- 9535** Rapid response to radiotherapy in unresectable tracheal adenoid cystic carcinoma: A case report

Wu Q, Xu F

- 9542** Clinical observation of pediatric-type follicular lymphomas in adult: Two case reports

Liu Y, Xing H, Liu YP

- 9549** Malignant adenomyoepithelioma of the breast: Two case reports and review of the literature

Zhai DY, Zhen TT, Zhang XL, Luo J, Shi HJ, Shi YW, Shao N

- 9557** Validation of diagnostic strategies of autoimmune atrophic gastritis: A case report

Sun WJ, Ma Q, Liang RZ, Ran YM, Zhang L, Xiao J, Peng YM, Zhan B

- 9564** Characteristics of primary giant cell tumor in soft tissue on magnetic resonance imaging: A case report

Kang JY, Zhang K, Liu AL, Wang HL, Zhang LN, Liu WV

- 9571** Acute esophageal necrosis as a complication of diabetic ketoacidosis: A case report
Moss K, Mahmood T, Spaziani R
- 9577** Simultaneous embolization of a spontaneous porto-systemic shunt and intrahepatic arterioportal fistula: A case report
Liu GF, Wang XZ, Luo XF
- 9584** Ureteroscopic holmium laser to transect the greater omentum to remove an abdominal drain: Four case reports
Liu HM, Luo GH, Yang XF, Chu ZG, Ye T, Su ZY, Kai L, Yang XS, Wang Z
- 9592** Forearm compartment syndrome due to acquired hemophilia that required massive blood transfusions after fasciotomy: A case report
Kameda T, Yokota T, Ejiri S, Konno SI
- 9598** Transforaminal endoscopic excision of bi-segmental non-communicating spinal extradural arachnoid cysts: A case report and literature review
Yun ZH, Zhang J, Wu JP, Yu T, Liu QY
- 9607** T-cell lymphoblastic lymphoma with extensive thrombi and cardiac thrombosis: A case report and review of literature
Ma YY, Zhang QC, Tan X, Zhang X, Zhang C
- 9617** Perfect pair, scopes unite – laparoscopic-assisted transumbilical gastroscopy for gallbladder-preserving polypectomy: A case report
Zheng Q, Zhang G, Yu XH, Zhao ZF, Lu L, Han J, Zhang JZ, Zhang JK, Xiong Y
- 9623** Bilateral hematoma after tubeless percutaneous nephrolithotomy for unilateral horseshoe kidney stones: A case report
Zhou C, Yan ZJ, Cheng Y, Jiang JH
- 9629** Atypical endometrial hyperplasia in a 35-year-old woman: A case report and literature review
Wu X, Luo J, Wu F, Li N, Tang AQ, Li A, Tang XL, Chen M
- 9635** Clinical features and literature review related to the material differences in thread rhinoplasty: Two case reports
Lee DW, Ryu H, Jang SH, Kim JH
- 9645** Concurrent tuberculous transverse myelitis and asymptomatic neurosyphilis: A case report
Gu LY, Tian J, Yan YP
- 9652** Diagnostic value of contrast-enhanced ultrasonography in mediastinal leiomyosarcoma mimicking aortic hematoma: A case report and review of literature
Xie XJ, Jiang TA, Zhao QY
- 9662** Misidentification of hepatic tuberculosis as cholangiocarcinoma: A case report
Li W, Tang YF, Yang XF, Huang XY

- 9670** Brunner's gland hyperplasia associated with lipomatous pseudohypertrophy of the pancreas presenting with gastrointestinal bleeding: A case report
Nguyen LC, Vu KT, Vo TTT, Trinh CH, Do TD, Pham NTV, Pham TV, Nguyen TT, Nguyen HC, Byeon JS
- 9680** Metachronous squamous cell carcinoma of pancreas and stomach in an elderly female patient: A case report
Kim JH, Kang CD, Lee K, Lim KH
- 9686** Iatrogenic giant pseudomeningocele of the cervical spine: A case report
Kim KW, Cho JH
- 9691** Traditional Chinese medicine for gait disturbance in adrenoleukodystrophy: A case report and review of literature
Kim H, Kim T, Cho W, Chang H, Chung WS

ABOUT COVER

Editorial Board Member of *World Journal of Clinical Cases*, Takeo Furuya, MD, PhD, Assistant Professor, Department of Orthopaedic Surgery, Chiba University Graduate School of Medicine, Chiba 2608670, Japan. furuya-takeo@chiba-u.jp

AIMS AND SCOPE

The primary aim of *World Journal of Clinical Cases* (WJCC, *World J Clin Cases*) is to provide scholars and readers from various fields of clinical medicine with a platform to publish high-quality clinical research articles and communicate their research findings online.

WJCC mainly publishes articles reporting research results and findings obtained in the field of clinical medicine and covering a wide range of topics, including case control studies, retrospective cohort studies, retrospective studies, clinical trials studies, observational studies, prospective studies, randomized controlled trials, randomized clinical trials, systematic reviews, meta-analysis, and case reports.

INDEXING/ABSTRACTING

The WJCC is now indexed in Science Citation Index Expanded (also known as SciSearch®), Journal Citation Reports/Science Edition, Scopus, PubMed, and PubMed Central. The 2021 Edition of Journal Citation Reports® cites the 2020 impact factor (IF) for WJCC as 1.337; IF without journal self cites: 1.301; 5-year IF: 1.742; Journal Citation Indicator: 0.33; Ranking: 119 among 169 journals in medicine, general and internal; and Quartile category: Q3. The WJCC's CiteScore for 2020 is 0.8 and Scopus CiteScore rank 2020: General Medicine is 493/793.

RESPONSIBLE EDITORS FOR THIS ISSUE

Production Editor: Yan-Xia Xing; Production Department Director: Xiang Li; Editorial Office Director: Jin-Lai Wang.

NAME OF JOURNAL

World Journal of Clinical Cases

ISSN

ISSN 2307-8960 (online)

LAUNCH DATE

April 16, 2013

FREQUENCY

Thrice Monthly

EDITORS-IN-CHIEF

Dennis A Bloomfield, Sandro Vento, Bao-Gan Peng

EDITORIAL BOARD MEMBERS

<https://www.wjgnet.com/2307-8960/editorialboard.htm>

PUBLICATION DATE

November 6, 2021

COPYRIGHT

© 2021 Baishideng Publishing Group Inc

INSTRUCTIONS TO AUTHORS

<https://www.wjgnet.com/bpg/gerinfo/204>

GUIDELINES FOR ETHICS DOCUMENTS

<https://www.wjgnet.com/bpg/GerInfo/287>

GUIDELINES FOR NON-NATIVE SPEAKERS OF ENGLISH

<https://www.wjgnet.com/bpg/gerinfo/240>

PUBLICATION ETHICS

<https://www.wjgnet.com/bpg/GerInfo/288>

PUBLICATION MISCONDUCT

<https://www.wjgnet.com/bpg/gerinfo/208>

ARTICLE PROCESSING CHARGE

<https://www.wjgnet.com/bpg/gerinfo/242>

STEPS FOR SUBMITTING MANUSCRIPTS

<https://www.wjgnet.com/bpg/GerInfo/239>

ONLINE SUBMISSION

<https://www.f6publishing.com>



Metachronous squamous cell carcinoma of pancreas and stomach in an elderly female patient: A case report

Ji Hyun Kim, Chang Don Kang, Kyungyul Lee, Kyu-Hyoung Lim

ORCID number: Ji Hyun Kim [0000-0002-9311-4001](https://orcid.org/0000-0002-9311-4001); Chang Don Kang [0000-0001-9748-968X](https://orcid.org/0000-0001-9748-968X); Kyungyul Lee [0000-0002-6243-6868](https://orcid.org/0000-0002-6243-6868); Kyu-Hyoung Lim [0000-0001-8482-9198](https://orcid.org/0000-0001-8482-9198).

Author contributions: Kang CD was the patient's doctor; Kim JH performed endoscopy; Kim JH and Lim KH contributed to reviewing of literature and drafting of manuscript; Lee K performed histological analysis; Lim KH supervised this study and revised the manuscript.

Informed consent statement: We could not receive written informed consent for publication as the patient had already passed away.

Conflict-of-interest statement: The authors declare no conflicts of interest.

CARE Checklist (2016) statement: The authors have read the CARE Checklist (2016), and the manuscript was prepared and revised according to the CARE Checklist (2016).

Open-Access: This article is an open-access article that was selected by an in-house editor and fully peer-reviewed by external reviewers. It is distributed in accordance with the Creative Commons Attribution NonCommercial (CC BY-NC 4.0)

Ji Hyun Kim, Chang Don Kang, Kyu-Hyoung Lim, Department of Internal Medicine, Kangwon National University School of Medicine, Chuncheon 24341, Kangwon Do, South Korea

Kyungyul Lee, Department of Pathology, Kangwon National University School of Medicine, Chuncheon 24341, Kangwon Do, South Korea

Corresponding author: Kyu-Hyoung Lim, MD, PhD, Associate Professor, Department of Internal Medicine, Kangwon National University School of Medicine, 156 Baengnyeong-ro, Chuncheon 24341, Kangwon Do, South Korea. kyuhyoung.lim@kangwon.ac.kr

Abstract

BACKGROUND

Squamous cell carcinoma (SCC) in pancreas and stomach is a rare histologic subtype with aggressive behavior, poor prognosis, and no standardized therapy. Pancreatic SCC or gastric SCC has been previously reported. However, case of SCC occurring in both the pancreas and the stomach has not been reported yet.

CASE SUMMARY

A 75-year-old female with prior history of hypertension and diabetes mellitus visited our hospital with complaint of abdominal pain that started three months ago. Computed tomography (CT) scan of the abdomen showed 3.3 cm mass at the distal pancreas. She received surgical resection which was histologically found to be SCC of the pancreas with clear resection margins. After she was discharged, she no longer visited the hospital. Three years later, she was referred to our hospital after showing abnormal findings on a gastroscopy performed at another hospital. Gastroscopy revealed a single, 2cm sized, ill-defined irregular flat and hyperemic mass at high body. Histologic finding of the mass was SCC. CT scan and positive emission tomography CT showed metastatic lesions to the liver and the peritoneum. She received combination chemotherapy with capecitabine and oxaliplatin. However, she passed away 6 mo after diagnosis of gastric SCC.

CONCLUSION

To the best of our knowledge, this is the first case of metachronous SCC of stomach occurring after diagnosis of pancreatic SCC.

Key Words: Squamous cell carcinoma; Pancreas; Stomach; Metachronous; Pancreatectomy; Case report

license, which permits others to distribute, remix, adapt, build upon this work non-commercially, and license their derivative works on different terms, provided the original work is properly cited and the use is non-commercial. See: <http://creativecommons.org/licenses/by-nc/4.0/>

Manuscript source: Unsolicited manuscript

Specialty type: Gastroenterology and hepatology

Country/Territory of origin: South Korea

Peer-review report's scientific quality classification

Grade A (Excellent): A
Grade B (Very good): B
Grade C (Good): 0
Grade D (Fair): 0
Grade E (Poor): 0

Received: July 13, 2021

Peer-review started: July 13, 2021

First decision: August 19, 2021

Revised: August 25, 2021

Accepted: September 10, 2021

Article in press: September 10, 2021

Published online: November 6, 2021

P-Reviewer: Li JL, Zhao J

S-Editor: Yan JP

L-Editor: A

P-Editor: Xing YX



©The Author(s) 2021. Published by Baishideng Publishing Group Inc. All rights reserved.

Core Tip: Pancreatic squamous cell carcinoma (SCC) and gastric SCC are very rare malignancies with aggressive behavior, poor prognosis, and no standardized therapy. To the best of our knowledge, this is the first case report of metachronous gastric SCC occurring at three years after curative resection of pancreatic cancer.

Citation: Kim JH, Kang CD, Lee K, Lim KH. Metachronous squamous cell carcinoma of pancreas and stomach in an elderly female patient: A case report. *World J Clin Cases* 2021; 9(31): 9680-9685

URL: <https://www.wjgnet.com/2307-8960/full/v9/i31/9680.htm>

DOI: <https://dx.doi.org/10.12998/wjcc.v9.i31.9680>

INTRODUCTION

Squamous cell carcinoma (SCC) is most frequently found in skin, head and neck region, oral cavity, esophagus, lung, cervix, and anus. Cells lining stomach and pancreas are glandular epithelium. Thus, adenocarcinoma is the most common histopathologic type. It has been reported in up to 90% of all gastric cancer and pancreatic cancer[1,2]. Gastric SCC is very rare, accounting for about 0.04% to 0.2% of all gastric carcinomas[3-5]. About 100 cases have been reported since its first report in 1905[6,7]. Pancreatic SCC is another rare neoplasm. About 50 cases have been reported, accounting for about 0.5% to 5% of all pancreatic neoplasms[8]. For both gastric SCC and pancreatic SCC, clinicopathologic characteristics and pathogenesis of are poorly understood. Therefore, currently there is no established standard treatment for them. The prognosis is known to be very poor for both gastric SCC and pancreatic SCC[6-8].

Metachronous cancers are defined as those occurring more than 6 mo later after the first primary cancer. Since both pancreatic SCC and gastric SCC are very rare, there has been no report of metachronous occurrence of these cancers. Here, we report an unusual case of metachronous gastric SCC that occurring three years after the diagnosis of pancreatic SCC.

CASE PRESENTATION

Chief complaints

A 75-year-old female with complaint of abdominal pain visited our hospital in August, 2015.

History of present illness

Abdominal pain was mainly located on the epigastric area which started three months ago accompanied by dyspepsia. She denied diarrhea, vomiting, weight loss, and fever.

History of past illness

The patient had hypertension and diabetes. She had no history of surgery.

Personal and family history

She had no prior history of smoking or drinking alcohol. No family history was noted.

Physical examination

Her vital sign was stable, with blood pressure of 130/90 mmHg, heart rate of 98 beats per minute, and body temperature of 36.8 °C. Physical examination of the abdomen revealed sharp tenderness at the epigastric area.

Laboratory examinations

Routine laboratory test showed slight elevation of white blood cell (13600/mm³), C-reactive protein (5.199 mg/dL), and tumor marker CA 19-9 (488 U/mL). Other

laboratory test results were within reference ranges. Her aspartate aminotransferase, alanine aminotransferase, and total bilirubin levels were also within reference ranges.

Imaging examinations

Computed tomography (CT) scan was done to further evaluate the cause of pain. It revealed a 3.3 cm sized mass at the tail of the pancreas (Figure 1A). Under clinical impression of resectable pancreatic cancer, she underwent distal pancreatectomy. Histopathologic finding of the surgical specimen was moderately differentiated SCC with papillary growth pattern and clear resection margin (Figure 1B). Immunohistochemical staining showed that tumor cells were positive for p63 (Figure 1C) but negative for CK7 and CK20.

Hospital course

The patient recovered without complications after surgery. She was discharged from our hospital. After discharge, she needed periodic outpatient follow-up to check for recurrence. However, she no longer visited the hospital.

Three years later, in 2018, she received a gastroscopy for regular check-up at another hospital. She was referred to our hospital with clinical impression of gastric cancer. Gastroscopy showed a single, 2 cm sized, ill-defined irregular flat and hyperemic mass at the greater curvature side of high body with mucosa friability (Figure 2A). Biopsy was performed. Moderately differentiated SCC was noted in the biopsy specimen (Figure 2B). Tumor cells were positive for p63 (Figure 2C) but negative for CK7 and CK20. These histopathologic findings in the stomach were consistent with those of the pancreas that had previously undergone surgery. CT scan & positive emission tomography CT scan for staging work-up revealed multiple hepatic and peritoneal metastasis.

FINAL DIAGNOSIS

The final diagnosis of the presented case was metachronous gastric SCC that occurred after the diagnosis of pancreatic SCC.

TREATMENT

Under the clinical diagnosis of advanced stage gastric SCC, she received combination chemotherapy with capecitabine and oxaliplatin.

OUTCOME AND FOLLOW-UP

After receiving three cycles of combination chemotherapy, CT scan for response evaluation showed a stable disease. During additional chemotherapy, she wanted to stop the chemotherapy due to chemotherapy induced mucositis and general weakness. Since then, she received conservative treatment for symptom control. She died 6 mo later in 2019 from disease progression.

DISCUSSION

It has been suggested that patients diagnosed with one type of cancer have higher likelihood of developing another type of cancer compared to the general population [9]. Although the reason is yet to be identified, factors to be considered include more frequent screening methods, recent improvement of imaging modalities, exposure to radiotherapy and hormonal therapy, environmental factors, and genetic factors. We report the first case of metachronous gastric SCC following pancreatic SCC.

p63 is a known marker of squamous differentiation. It is normally found in progenitor cells of stratified epithelia. Expression of p63 is diffuse in SCC. Pancreatic SCC is a rare neoplasm accounting for up to 5% of pancreatic neoplasms [3-5]. The pathogenesis of pancreatic SCC is unclear. Proposed theories include squamous metaplasia from chronic inflammation leading to malignant transformation, transition from previous adenocarcinoma to SCC, or arising from precursor progenitor cell [8].

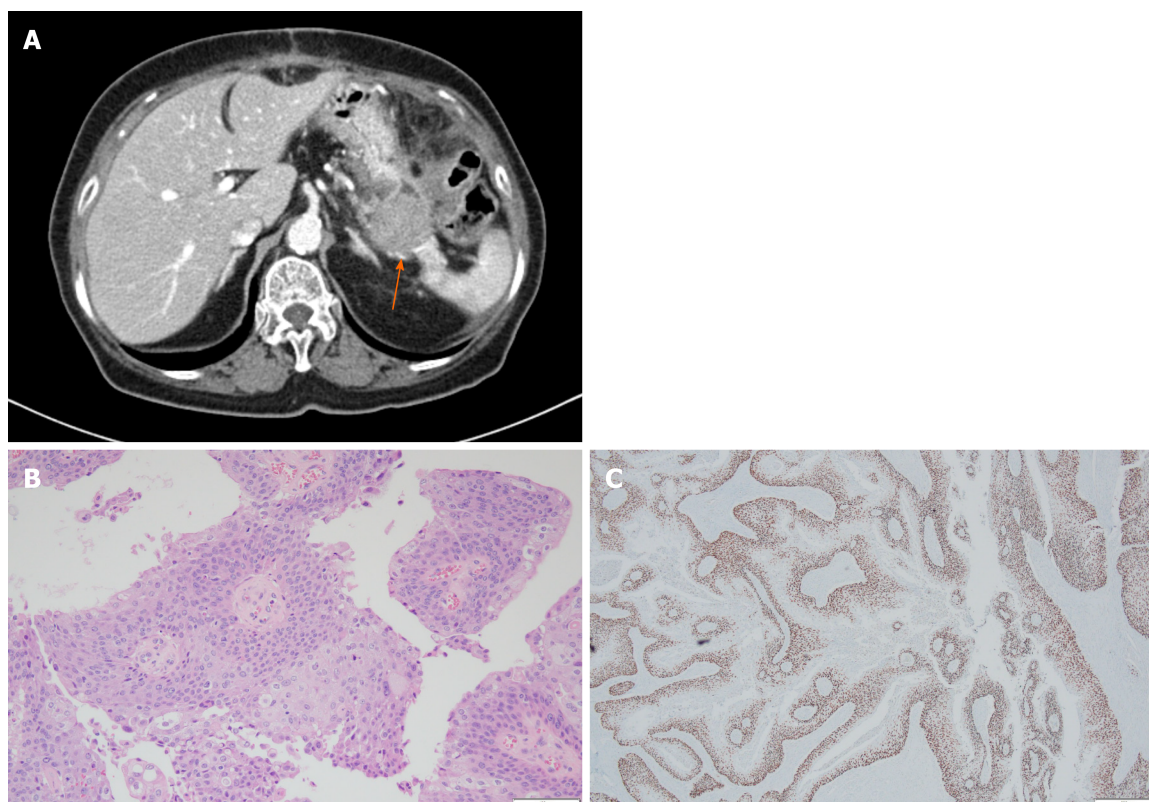


Figure 1 Images of the pancreas. A: Computed tomography showing 3.3 cm sized mass (arrow) at the pancreas tail with enhancement; B: Hematoxylin & eosin stain of distal pancreas showing moderately differentiated squamous cell carcinoma with papillary growth pattern ($\times 200$); C: Tumor cells were diffuse positive for p63 by immunohistochemical staining ($\times 40$).

Although there is no standardized treatment for pancreatic SCC, treatment options include surgical resection, chemotherapy, and radiotherapy[10]. The biologic behavior of pancreatic SCC from published literature highlights its propensity to affect elderly patients, metastasis at the time of diagnosis, poor response to chemotherapy and radiation therapy, and an extremely short survival period[11]. Several studies have suggested an improved survival with chemotherapeutic agents using a combination of 5-fluorouracil, cisplatin, and vinblastine, gemcitabine, or nanosomal paclitaxel[11-14]. Prognosis still remains dismal with most cases undergoing dissemination at the time of diagnosis. The median overall survival for patients who had undergone curative resection and those who had not were 7 mo (range: 6-16 mo) and 3 mo (range: 0.25-9 mo), respectively[10].

Gastric SCC is another rare disease accounting for 0.04% to 0.2% of all gastric carcinomas[3-5]. According to the Japanese classification, primary gastric SCC can be diagnosed if all tumor cells are identified as squamous cell and if there is evidence that carcinoma arises from gastric mucosa[13]. Although the pathogenesis of gastric SCC is yet to be elucidated, hypothesis includes squamous differentiation of existing adenocarcinoma, squamous metaplasia of gastric mucosa prior to malignant transformation, differentiation from multipotent stem cells, translocation of ectopic squamous cell in gastric mucosa, gastric vascular endothelial cell, and effect of viruses such as Epstein-Barr virus and human papilloma virus. Similar to pancreatic SCC, there is no established standardized treatment. For cases with resectable gastric SCC, radical resection is recommended to improve survival[14]. However, it is usually impossible as most gastric SCCs are found at advanced stages. For metastatic gastric SCC, chemotherapy may be considered as a treatment option. Single or combination regimens of agents such as 5-fluorouracil, platinum, and taxane is usually used[15-17]. However, currently there is no established optimal regimen. Overall survival of metastatic gastric SCC has been reported to be 7 mo[16], which is shorter than that (12-16 mo) of gastric adenocarcinoma.

The patient had received curative resection for pancreatic SCC. Three years later, she was diagnosed with gastric SCC which had metastasized to the liver and the peritoneum. As direct invasion from pancreatic SCC to the stomach has been reported [18,19], it can be argued that the gastric SCC might be relapsed lesion of the previous pancreatic SCC. We think it is more reasonable to judge it as a metachronous case for

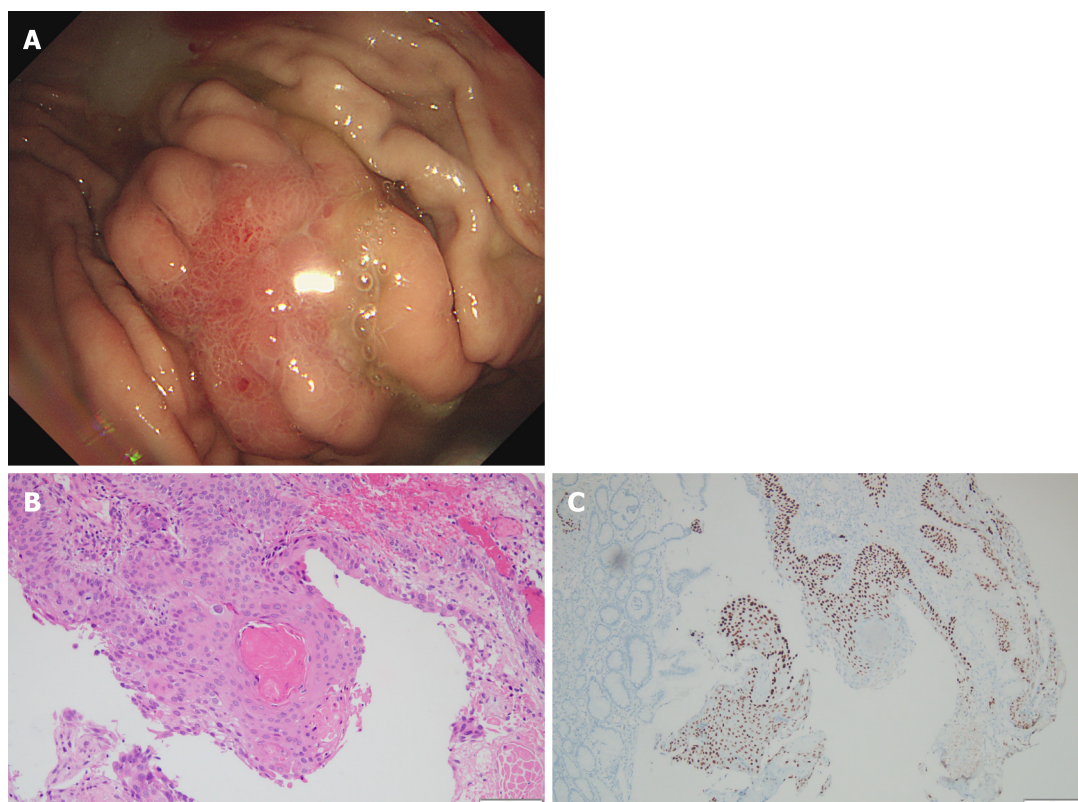


Figure 2 Images of the stomach. A: Gastrosocopy showing 2 cm sized ill-defined irregular flat and hyperemic mucosa at high body; B: Hematoxylin & eosin stain of stomach biopsy showing moderately differentiated squamous cell carcinoma ($\times 200$); C: Tumor cells were positive for p63 by immunohistochemical staining ($\times 100$).

the following reasons. First, given the aggressive nature of pancreatic SCC, median overall survival of patients with curative resection of pancreatic SCC is 7 mo (range: 6-16 mo), with 1 year survival rate of 4.8% [8]. However, our patient survived for 3 years after the diagnosis of PSCC. Second, according to gastrosocopy findings, it is a single mucosal lesion in the stomach, not a direct invasion of other organs or multiple mucosal lesions. Third, stomach is an unusual site for metastasis. Primary origins of cancers associated with metastasis to the stomach are known to be lung, breast, esophagus, and melanoma.

CONCLUSION

For pancreatic SCC and gastric SCC, each of them is an extremely rare and aggressive tumor. To the best of our knowledge, this is the first case report of metachronous SCC on stomach occurring after the diagnosis of pancreatic SCC. Based on the rare incidence of this histologic subtype in the pancreas and the stomach, there is a need for ongoing research on their diagnosis and treatment options.

REFERENCES

- 1 **Thomas RM**, Sobin LH. Gastrointestinal cancer. *Cancer* 1995; **75**: 154-170 [PMID: 8000994 DOI: 10.1002/1097-0142(19950101)75:1+<154::aid-cnrcr2820751305>3.0.co;2-z]
- 2 **Capella C**, Albarello L, Capelli P, Sessa F, Zamboni G; Gruppo Italiano Patologi Apparato Digerente (GIPAD); Società Italiana di Anatomia Patologica e Citopatologia Diagnostica/International Academy of Pathology, Italian division (SIAPEC/IAP). Carcinoma of the exocrine pancreas: the histology report. *Dig Liver Dis* 2011; **43** Suppl 4: S282-S292 [PMID: 21459334]
- 3 **Chang YS**, Kim MS, Kim DH, Park S, You JY, Han JK, Kim SH, Lee HJ. Primary Squamous Cell Carcinoma of the Remnant Stomach after Subtotal Gastrectomy. *J Gastric Cancer* 2016; **16**: 120-124 [PMID: 27433399 DOI: 10.5230/jgc.2016.16.2.120]
- 4 **Dong C**, Jiang M, Tan Y, Kong Y, Yang Z, Zhong C, Li D, Yuan Y. The clinicopathological features and prognostic factors of gastric squamous cell carcinoma. *Medicine (Baltimore)* 2016; **95**: e4720

- [PMID: 27559983 DOI: 10.1097/MD.0000000000004720]
- 5 **Gao S**, Chen D, Huang L, Dai R, Shan Y. Primary squamous cell carcinoma of the stomach: a case report and literature review. *Int J Clin Exp Pathol* 2015; **8**: 9667-9671 [PMID: 26464735]
 - 6 **Bonnheim DC**, Sarac OK, Fett W. Primary squamous cell carcinoma of the stomach. *Am J Gastroenterol* 1985; **80**: 91-94 [PMID: 3970006]
 - 7 **Callacondo D**, Ganoza-Salas A, Anicama-Lima W, Quispe-Mauricio A, Longacre TA. Primary squamous cell carcinoma of the stomach with paraneoplastic leukocytosis: a case report and review of literature. *Hum Pathol* 2009; **40**: 1494-1498 [PMID: 19467693 DOI: 10.1016/j.humpath.2009.02.014]
 - 8 **Ntanasis-Stathopoulos I**, Tsimigras DI, Georgiadou D, Kanavidis P, Riccioni O, Salla C, Psaltopoulou T, Sergeantanis TN. Squamous cell carcinoma of the pancreas: A systematic review and pooled survival analysis. *Eur J Cancer* 2017; **79**: 193-204 [PMID: 28511147 DOI: 10.1016/j.ejca.2017.04.006]
 - 9 **Torina TB**, Hudspeth EL, Chun JM, Zaloga W, Alderink C, Abdeen Y. An Unusual Occurrence of Multiple Metachronous and Synchronous Primary Cancers in a Female Patient. *Case Rep Oncol Med* 2020; **2020**: 5691732 [PMID: 32148985 DOI: 10.1155/2020/5691732]
 - 10 **Brown HA**, Dotto J, Robert M, Salem RR. Squamous cell carcinoma of the pancreas. *J Clin Gastroenterol* 2005; **39**: 915-919 [PMID: 16208119 DOI: 10.1097/01.mcg.0000180636.74387.e6]
 - 11 **Al-Shehri A**, Silverman S, King KM. Squamous cell carcinoma of the pancreas. *Curr Oncol* 2008; **15**: 293-297 [PMID: 19079631 DOI: 10.3747/co.v15i6.265]
 - 12 **Anagnostopoulos GK**, Aithal GP, Ragunath K, Kaye P, Rowlands BJ. Squamous cell carcinoma of the pancreas: report of a case and review of the literature. *JOP* 2006; **7**: 47-50 [PMID: 16407618 DOI: 10.1007/BF01308190]
 - 13 **Japanese Gastric Cancer Association**. Japanese Classification of Gastric Carcinoma - 2nd English Edition -. *Gastric Cancer* 1998; **1**: 10-24 [PMID: 11957040 DOI: 10.1007/s101209800016]
 - 14 **Schmidt C**, Schmid A, Lüttges JE, Kremer B, Henne-Bruns D. Primary squamous cell carcinoma of the stomach. Report of a case and review of literature. *Hepatogastroenterology* 2001; **48**: 1033-1036 [PMID: 11490793]
 - 15 **Guzman Rojas P**, Parikh J, Vishnubhotla P, Oharriz JJ. Primary Gastric Squamous Cell Carcinoma. *Cureus* 2018; **10**: e2389 [PMID: 29850384 DOI: 10.7759/cureus.2389]
 - 16 **Meng Y**, Zhang J, Wang H, Zhang Y, Sun R, Zhang Z, Gao F, Huang C, Zhang S. Poorer prognosis in patients with advanced gastric squamous cell carcinoma compared with adenocarcinoma of the stomach: Case report. *Medicine (Baltimore)* 2017; **96**: e9224 [PMID: 29390350 DOI: 10.1097/MD.0000000000009224]
 - 17 **Vailas MG**, Syllaios A, Hasemaki N, Sotiropoulou M, Mpaili E, Sarlanis H, Felekouras E, Papalampros A. A type of neoplasia deadlier than gastric adenocarcinoma? *World J Surg Oncol* 2019; **17**: 113 [PMID: 31255175 DOI: 10.1186/s12957-019-1657-x]
 - 18 **Rana SS**, Bhasin DK, Jain K, Nada R, Sinha SK, Singh K. Endoscopic diagnosis of squamous cell carcinoma of the pancreas invading the stomach. *JOP* 2009; **10**: 181-183 [PMID: 19287113]
 - 19 **De Palma GD**, Masone S, Rega M, Simeoli I, Donisi M, Addeo P, Iannone L, Pilone V, Persico G. Metastatic tumors to the stomach: clinical and endoscopic features. *World J Gastroenterol* 2006; **12**: 7326-7328 [PMID: 17143949 DOI: 10.3748/wjg.v12.i45.7326]



Published by **Baishideng Publishing Group Inc**
7041 Koll Center Parkway, Suite 160, Pleasanton, CA 94566, USA

Telephone: +1-925-3991568

E-mail: bpgoffice@wjgnet.com

Help Desk: <https://www.f6publishing.com/helpdesk>

<https://www.wjgnet.com>

