

World Journal of *Clinical Cases*

World J Clin Cases 2021 November 16; 9(32): 9699-10051



Contents

Thrice Monthly Volume 9 Number 32 November 16, 2021

REVIEW

- 9699 Emerging role of long noncoding RNAs in recurrent hepatocellular carcinoma
Fang Y, Yang Y, Li N, Zhang XL, Huang HF

MINIREVIEWS

- 9711 Current treatment strategies for patients with only peritoneal cytology positive stage IV gastric cancer
Bausys A, Gricius Z, Aniukstyte L, Luksta M, Bickaite K, Bausys R, Strupas K

ORIGINAL ARTICLE

Case Control Study

- 9722 Botulinum toxin associated with fissurectomy and anoplasty for hypertonic chronic anal fissure: A case-control study
D'Orazio B, Geraci G, Famà F, Terranova G, Di Vita G
- 9731 Correlation between circulating endothelial cell level and acute respiratory distress syndrome in postoperative patients
Peng M, Yan QH, Gao Y, Zhang Z, Zhang Y, Wang YF, Wu HN

Retrospective Study

- 9741 Effects of early rehabilitation in improvement of paediatric burnt hands function
Zhou YQ, Zhou JY, Luo GX, Tan JL
- 9752 Intracortical screw insertion plus limited open reduction in treating type 31A3 irreducible intertrochanteric fractures in the elderly
Huang XW, Hong GQ, Zuo Q, Chen Q
- 9762 Treatment effects and periodontal status of chronic periodontitis after routine Er:YAG laser-assisted therapy
Gao YZ, Li Y, Chen SS, Feng B, Wang H, Wang Q
- 9770 Risk factors for occult metastasis detected by inflammation-based prognostic scores and tumor markers in biliary tract cancer
Hashimoto Y, Ajiki T, Yanagimoto H, Tsugawa D, Shinozaki K, Toyama H, Kido M, Fukumoto T
- 9783 Scapular bone grafting with allograft pin fixation for repair of bony Bankart lesions: A biomechanical study
Lu M, Li HP, Liu YJ, Shen XZ, Gao F, Hu B, Liu YF
- 9792 High-resolution computed tomography findings independently predict epidermal growth factor receptor mutation status in ground-glass nodular lung adenocarcinoma
Zhu P, Xu XJ, Zhang MM, Fan SF

- 9804** Colorectal cancer patients in a tertiary hospital in Indonesia: Prevalence of the younger population and associated factors

Makmun D, Simadibrata M, Abdullah M, Syam AF, Shatri H, Fauzi A, Renaldi K, Maulahela H, Utari AP, Pribadi RR, Muzellina VN, Nursyirwan SA

- 9815** Association between *Helicobacter pylori* infection and food-specific immunoglobulin G in Southwest China

Liu Y, Shuai P, Liu YP, Li DY

- 9825** Systemic immune inflammation index, ratio of lymphocytes to monocytes, lactate dehydrogenase and prognosis of diffuse large B-cell lymphoma patients

Wu XB, Hou SL, Liu H

Clinical Trials Study

- 9835** Evaluating the efficacy of endoscopic sphincterotomy on biliary-type sphincter of Oddi dysfunction: A retrospective clinical trial

Ren LK, Cai ZY, Ran X, Yang NH, Li XZ, Liu H, Wu CW, Zeng WY, Han M

Observational Study

- 9847** Management of pouch related symptoms in patients who underwent ileal pouch anal anastomosis surgery for adenomatous polyposis

Gilad O, Rosner G, Brazowski E, Kariv R, Gluck N, Strul H

- 9857** Presepsin as a biomarker for risk stratification for acute cholangitis in emergency department: A single-center study

Zhang HY, Lu ZQ, Wang GX, Xie MR, Li CS

Prospective Study

- 9869** Efficacy of Yiqi Jianpi anti-cancer prescription combined with chemotherapy in patients with colorectal cancer after operation

Li Z, Yin DF, Wang W, Zhang XW, Zhou LJ, Yang J

META-ANALYSIS

- 9878** Arthroplasty vs proximal femoral nails for unstable intertrochanteric femoral fractures in elderly patients: A systematic review and meta-analysis

Chen WH, Guo WX, Gao SH, Wei QS, Li ZQ, He W

CASE REPORT

- 9889** Synchronous multiple primary malignancies of the esophagus, stomach, and jejunum: A case report

Li Y, Ye LS, Hu B

- 9896** Idiopathic acute superior mesenteric venous thrombosis after renal transplantation: A case report

Zhang P, Li XJ, Guo RM, Hu KP, Xu SL, Liu B, Wang QL

- 9903** Next-generation sequencing technology for diagnosis and efficacy evaluation of a patient with visceral leishmaniasis: A case report

Lin ZN, Sun YC, Wang JP, Lai YL, Sheng LX

- 9911** Cerebral air embolism complicating transbronchial lung biopsy: A case report
Herout V, Brat K, Richter S, Cundrle Jr I
- 9917** Isolated synchronous Virchow lymph node metastasis of sigmoid cancer: A case report
Yang JQ, Shang L, Li LP, Jing HY, Dong KD, Jiao J, Ye CS, Ren HC, Xu QF, Huang P, Liu J
- 9926** Clinical presentation and management of drug-induced gingival overgrowth: A case series
Fang L, Tan BC
- 9935** Adult with mass burnt lime aspiration: A case report and literature review
Li XY, Hou HJ, Dai B, Tan W, Zhao HW
- 9942** Massive hemothorax due to intercostal arterial bleeding after percutaneous catheter removal in a multiple-trauma patient: A case report
Park C, Lee J
- 9948** Hemolymphangioma with multiple hemangiomas in liver of elderly woman with history of gynecological malignancy: A case report
Wang M, Liu HF, Zhang YZZ, Zou ZQ, Wu ZQ
- 9954** Rare location and drainage pattern of right pulmonary veins and aberrant right upper lobe bronchial branch: A case report
Wang FQ, Zhang R, Zhang HL, Mo YH, Zheng Y, Qiu GH, Wang Y
- 9960** Respiratory failure after scoliosis correction surgery in patients with Prader-Willi syndrome: Two case reports
Yoon JY, Park SH, Won YH
- 9970** Computed tomography-guided chemical renal sympathetic nerve modulation in the treatment of resistant hypertension: A case report
Luo G, Zhu JJ, Yao M, Xie KY
- 9977** Large focal nodular hyperplasia is unresponsive to arterial embolization: A case report
Ren H, Gao YJ, Ma XM, Zhou ST
- 9982** Fine-needle aspiration cytology of an intrathyroidal nodule diagnosed as squamous cell carcinoma: A case report
Yu JY, Zhang Y, Wang Z
- 9990** Extensive abdominal lymphangiomatosis involving the small bowel mesentery: A case report
Alhasan AS, Daqqaq TS
- 9997** Gastrointestinal symptoms as the first sign of chronic granulomatous disease in a neonate: A case report
Meng EY, Wang ZM, Lei B, Shang LH
- 10006** Screw penetration of the iliopsoas muscle causing late-onset pain after total hip arthroplasty: A case report
Park HS, Lee SH, Cho HM, Choi HB, Jo S

- 10013** Uretero-lumbar artery fistula: A case report
Chen JJ, Wang J, Zheng QG, Sun ZH, Li JC, Xu ZL, Huang XJ
- 10018** Rare mutation in MKRN3 in two twin sisters with central precocious puberty: Two case reports
Jiang LQ, Zhou YQ, Yuan K, Zhu JF, Fang YL, Wang CL
- 10024** Primary mucosal-associated lymphoid tissue extranodal marginal zone lymphoma of the bladder from an imaging perspective: A case report
Jiang ZZ, Zheng YY, Hou CL, Liu XT
- 10033** Focal intramural hematoma as a potential pitfall for iatrogenic aortic dissection during subclavian artery stenting: A case report
Zhang Y, Wang JW, Jin G, Liang B, Li X, Yang YT, Zhan QL
- 10040** Ventricular tachycardia originating from the His bundle: A case report
Zhang LY, Dong SJ, Yu HJ, Chu YJ
- 10046** Posthepatectomy jaundice induced by paroxysmal nocturnal hemoglobinuria: A case report
Liang HY, Xie XD, Jing GX, Wang M, Yu Y, Cui JF

ABOUT COVER

Editorial Board Member of *World Journal of Clinical Cases*, Jalaj Garg, FACC, MD, Academic Research, Assistant Professor, Division of Cardiology, Medical College of Wisconsin, Milwaukee, WI 53226, United States.
garg.jalaj@yahoo.com

AIMS AND SCOPE

The primary aim of *World Journal of Clinical Cases* (WJCC, *World J Clin Cases*) is to provide scholars and readers from various fields of clinical medicine with a platform to publish high-quality clinical research articles and communicate their research findings online.

WJCC mainly publishes articles reporting research results and findings obtained in the field of clinical medicine and covering a wide range of topics, including case control studies, retrospective cohort studies, retrospective studies, clinical trials studies, observational studies, prospective studies, randomized controlled trials, randomized clinical trials, systematic reviews, meta-analysis, and case reports.

INDEXING/ABSTRACTING

The WJCC is now indexed in Science Citation Index Expanded (also known as SciSearch®), Journal Citation Reports/Science Edition, Scopus, PubMed, and PubMed Central. The 2021 Edition of Journal Citation Reports® cites the 2020 impact factor (IF) for WJCC as 1.337; IF without journal self cites: 1.301; 5-year IF: 1.742; Journal Citation Indicator: 0.33; Ranking: 119 among 169 journals in medicine, general and internal; and Quartile category: Q3. The WJCC's CiteScore for 2020 is 0.8 and Scopus CiteScore rank 2020: General Medicine is 493/793.

RESPONSIBLE EDITORS FOR THIS ISSUE

Production Editor: Jia-Hui Li; Production Department Director: Yu-Jie Ma; Editorial Office Director: Jin-Lei Wang.

NAME OF JOURNAL

World Journal of Clinical Cases

ISSN

ISSN 2307-8960 (online)

LAUNCH DATE

April 16, 2013

FREQUENCY

Thrice Monthly

EDITORS-IN-CHIEF

Dennis A Bloomfield, Sandro Vento, Bao-Gan Peng

EDITORIAL BOARD MEMBERS

<https://www.wjnet.com/2307-8960/editorialboard.htm>

PUBLICATION DATE

November 16, 2021

COPYRIGHT

© 2021 Baishideng Publishing Group Inc

INSTRUCTIONS TO AUTHORS

<https://www.wjnet.com/bpg/gerinfo/204>

GUIDELINES FOR ETHICS DOCUMENTS

<https://www.wjnet.com/bpg/GerInfo/287>

GUIDELINES FOR NON-NATIVE SPEAKERS OF ENGLISH

<https://www.wjnet.com/bpg/gerinfo/240>

PUBLICATION ETHICS

<https://www.wjnet.com/bpg/GerInfo/288>

PUBLICATION MISCONDUCT

<https://www.wjnet.com/bpg/gerinfo/208>

ARTICLE PROCESSING CHARGE

<https://www.wjnet.com/bpg/gerinfo/242>

STEPS FOR SUBMITTING MANUSCRIPTS

<https://www.wjnet.com/bpg/GerInfo/239>

ONLINE SUBMISSION

<https://www.f6publishing.com>

Retrospective Study

Systemic immune inflammation index, ratio of lymphocytes to monocytes, lactate dehydrogenase and prognosis of diffuse large B-cell lymphoma patients

Xiao-Bo Wu, Shu-Ling Hou, Hu Liu

ORCID number: Xiao-Bo Wu 0000-0003-4855-9447; Shu-Ling Hou 0000-0002-0831-4202; Hu Liu 0000-0001-7780-5358.

Author contributions: Wu XB designed the research study; Hou SL performed the research; Liu Hu contributed new reagents and analytic tools; Wu XB analyzed the data and wrote the manuscript; and all authors have read and approve the final manuscript.

Institutional review board

statement: The study was reviewed and approved by the Shanxi Bethune Hospital, Shanxi Academy of Medical Sciences, Tongji Shanxi Hospital Institutional Review Board.

Informed consent statement: All study participants provided informed written consent prior to study enrollment.

Conflict-of-interest statement: No conflict of interest.

Data sharing statement: No additional data are available.

Country/Territory of origin: China

Specialty type: Oncology

Xiao-Bo Wu, Shu-Ling Hou, Hu Liu, Department of Lymphoma, Cancer Center, Shanxi Bethune Hospital, Shanxi Academy of Medical Sciences, Tongji Shanxi Hospital, Third Hospital of Shanxi Medical University, Taiyuan 030032, Shanxi Province, China

Xiao-Bo Wu, Shu-Ling Hou, Hu Liu, Tongji Hospital, Tongji Medical College, Huazhong University of Science and Technology, Wuhan 430030, Hubei Province, China

Corresponding author: Xiao-Bo Wu, MMed, Attending Doctor, Department of Lymphoma, Cancer Center, Shanxi Bethune Hospital, Shanxi Academy of Medical Sciences, Tongji Shanxi Hospital, Third Hospital of Shanxi Medical University, No. 99 Longcheng Street, Taiyuan 030032, Shanxi Province, China. maviswxb@163.com

Abstract

BACKGROUND

In malignant tumors, inflammation plays a vital role in the development, invasion, and metastasis of cancer cells. Diffuse large B-cell lymphoma (DLBCL), the most common malignant proliferative disease of the lymphatic system, is commonly associated with inflammation. The international prognostic index (IPI), which includes age, lactate dehydrogenase (LDH), number of extranodal lesions, Ann Arbor score, and Eastern Cooperative Oncology Group (ECOG) score, can evaluate the prognosis of DLBCL. However, its use in accurately identifying high-risk patients and guiding treatment is poor. Therefore, it is important to find novel immune markers in predicting the prognosis of DLBCL patients.

AIM

To determine the association between the systemic immune inflammation index (SII), ratio of lymphocytes to monocytes (LMR), ratio of LMR to LDH (LMR/LDH), and prognosis of patients with DLBCL.

METHODS

A total of 68 patients diagnosed with DLBCL, treated in our hospital between January 2016 and January 2020, were included. χ^2 test, Pearson's R correlation, Kaplan Meier curves, and Cox proportional risk regression analysis were used. The differences in the SII, LMR, and LMR/LDH among patients with different clinicopathological features were analyzed. The differences in progression-free survival time among patients with different SII, LMR, and LMR/LDH expressions

Provenance and peer review:

Unsolicited article; Externally peer reviewed

Peer-review report's scientific quality classification

Grade A (Excellent): 0
Grade B (Very good): 0
Grade C (Good): C, C
Grade D (Fair): 0
Grade E (Poor): 0

Open-Access: This article is an open-access article that was selected by an in-house editor and fully peer-reviewed by external reviewers. It is distributed in accordance with the Creative Commons Attribution NonCommercial (CC BY-NC 4.0) license, which permits others to distribute, remix, adapt, build upon this work non-commercially, and license their derivative works on different terms, provided the original work is properly cited and the use is non-commercial. See: <http://creativecommons.org/licenses/by-nc/4.0/>

Received: August 18, 2021

Peer-review started: August 18, 2021

First decision: September 29, 2021

Revised: October 8, 2021

Accepted: October 25, 2021

Article in press: October 25, 2021

Published online: November 16, 2021

P-Reviewer: Adams HJA, Kempf W

S-Editor: Wang JL

L-Editor: A

P-Editor: Wang JL



and influencing factors affecting the prognosis of DLBCL patients, were also analyzed.

RESULTS

The LMR and LMR/LDH in patients with Ann Arbor stage III-IV, ECOG score ≥ 2 , and SII, IPI score 2-5 were significantly higher than those of patients with Ann Arbor stage I-II and ECOG score < 2 ($P < 0.05$). Patients with high SII, LMR, and LMR/LDH had progression-free survival times of 34 mo (95%CI: 32.52-38.50), 35 mo (95%CI: 33.42-36.58) and 35 mo (95%CI: 33.49-36.51), respectively, which were significantly lower than those with low SII, LMR, and LMR/LDH ($P < 0.05$); the SII, LMR, and LMR/LDH were positively correlated ($P < 0.05$). Cox proportional risk regression analysis showed that the SII, LMR, and LMR/LDH were influencing factors for the prognosis of DLBCL patients (hazard ratio = 1.143, 1.665, and 1.704, respectively; $P < 0.05$).

CONCLUSION

The SII, LMR, and LMR/LDH are related to the clinicopathological features of DLBCL, and they also influence the prognosis of patients with the disease.

Key Words: Systemic immune inflammation index; Ratio of lymphocytes to monocytes; Lactate dehydrogenase; Diffuse large B-cell lymphoma; Prognosis

©The Author(s) 2021. Published by Baishideng Publishing Group Inc. All rights reserved.

Core Tip: We need find effective biomarkers to predict the prognosis and recurrence of diffuse large B-cell lymphoma among patients. Lactate dehydrogenase and systemic immune inflammation index can be used as a prognostic indicator.

Citation: Wu XB, Hou SL, Liu H. Systemic immune inflammation index, ratio of lymphocytes to monocytes, lactate dehydrogenase and prognosis of diffuse large B-cell lymphoma patients. *World J Clin Cases* 2021; 9(32): 9825-9834

URL: <https://www.wjgnet.com/2307-8960/full/v9/i32/9825.htm>

DOI: <https://dx.doi.org/10.12998/wjcc.v9.i32.9825>

INTRODUCTION

Diffuse large B-cell lymphoma (DLBCL), the most common type of non-Hodgkin lymphoma (NHL), is the result of the combined effect of immune stimulation, immunosuppression, and genetic susceptibility of patients[1,2]. Currently, 75%-80% of DLBCL patients can achieve a complete response after first-line treatment. However, studies have suggested that approximately 40% of patients still experience relapse and/or resistance to treatment owing to the highly heterogeneous nature of the disease, especially in terms of cell origin, biological features, clinical manifestations, prognosis, and other aspects, such as its tendency to be highly invasive[3]. Therefore, finding effective biomarkers to predict the prognosis and recurrence of DLBCL among patients is still needed. Studies show that the ratio of lymphocytes to monocytes (LMR) can best reflect the host immune status; thus, it can be used as an effective prognostic marker in DLBCL patients[4]. In addition, the ratio of immune cells to tumor load can be used as a prognostic indicator for these patients. Studies have also shown that in lymphoma, lactate dehydrogenase (LDH) is associated with the tumor microenvironment and tumor tissue DNA, which is an effective marker reflecting tumor load[5]. The systemic immune inflammation index (SII) is a comprehensive inflammatory marker based on peripheral blood neutrophil, platelet, and lymphocyte counts, which can be used to predict the clinical prognosis of non-small cell lung cancer, gastric cancer, pancreatic cancer, and many other solid tumors[6,7]; however, there are still few studies on its use in DLBCL. Our study mainly explored and discussed the association between the SII, LMR, LMR/LDH, and prognosis of DLBCL patients.

MATERIALS AND METHODS

Baseline data

A total of 68 DLBCL patients treated in our hospital between January 2016 and January 2020 were selected. Of these, 40 were male, and 28 were female. There were 22 patients aged < 60 years, and 46 aged > 60 years. There were 41 patients with Ann Arbor stage I-II and 27 with stage III-IV. A total of 46 patients had an Eastern Cooperative Oncology Group (ECOG) score < 2, while 22 had an ECOG score \geq 2. Thirty-six patients had an international prognostic index (IPI) score of 0-1, and 32 had an IPI score of 2-5. The inclusion criteria were as follows: (1) the diagnosis meets the criteria in the Chinese Guidelines for the Diagnosis and Treatment of DLBCL[8]; (2) primary treatment; (3) receiving R-CHOP or R-CHOP-like chemotherapy regimens in our hospital; (4) clinical follow-up data kept intact; and (5) informed consent of patients and their families. The exclusion criteria were as follows: (1) complicated disease with systemic malignancies; (2) complicated with heart, liver, kidney, and other organ diseases; and (3) giving up treatment halfway.

Methods of treatment and follow-up

All patients received standard immunochemotherapy, which included rituximab, cyclophosphamide, doxorubicin, vincristine, and prednisone (D1: cyclophosphamide 750 mg/m², doxorubicin 50 mg/m², and vincristine 1.4 mg/m² and D1-5: prednisone 100 mg/m² and rituximab 375 mg/m² for each cycle). Each cycle of treatment was administered with an interval of 21 d for least six cycles. All patients were followed up regularly. Follow-up included the patient's current health state, assessment for recurrence, and the time and cause of death if the patient died. The follow-up date was up to May 31, 2020.

Data collection

Factors that may be related to the prognosis of DLBCL patients were included in the study, such as sex, age, pathological type, clinical stage, IPI score, ECOG score, LDH, absolute value of lymphocytes (ALC), absolute value of monocytes (AMC), LMR (ALC/AMC), and SII (%) [(neutrophil count \times platelet count)/Lymphocyte count \times 100%].

Statistical analyses

SPSS 22.0 software was used for analysis, measurement data were expressed as mean \pm SD, and *t* test was used for comparison between groups. Enumeration data were expressed as *n* (%), and comparison between groups was performed using χ^2 test. Pearson correlation analysis was used for correlation analysis. The survival curve was analyzed using the Kaplan-Meier method. Prognostic factors were analyzed using the Cox proportional risk regression (inspection α = 0.05).

RESULTS

Comparison of the SII in patients with different clinicopathological features

The SII in patients with Ann Arbor stage III-IV and ECOG score \geq 2 was significantly higher than that of patients with Ann Arbor stage I-II and ECOG score < 2 (*P* < 0.05), as shown in Table 1.

Comparison of the LMR and LMR/LDH in patients with different clinicopathological features

The LMR in patients with Ann Arbor stage III-IV, ECOG score \geq 2, and IPI score 2-5 was significantly higher than that of patients with Ann Arbor stage I-II, ECOG score < 2, and IPI score 0-1 (*P* < 0.05), as shown in Table 2. The LMR/LDH in patients with Ann Arbor stage III-IV, ECOG score \geq 2, and IPI score 2-5 was significantly higher than that of patients with Ann Arbor stage I-II, ECOG score < 2, and IPI score 0-1 (*P* < 0.05), as shown in Table 3.

Comparison of prognosis in patients with different SII, LMR, and LMR/LDH

The progression-free survival times of patients with high SII (\geq 521.50), high LMR (\geq 2.67), and high LMR/LDH ($>$ 0.40) were 34 mo (95%CI: 32.52-38.50), 35 mo (95%CI: 33.42-36.58), and 35 mo (95%CI: 33.49-36.5), respectively. These were significantly

Table 1 The comparison of systemic immune inflammation index in patients with different clinicopathological features

Clinicopathological features	<i>n</i>	SII (%)	<i>t</i>	<i>P</i> value
Sex			-0.321	0.749
Male	40	519.29 ± 98.29		
Female	28	526.84 ± 91.10		
Age (yr)			-0.137	0.891
< 60	22	520.02 ± 94.50		
≥ 60	46	523.54 ± 101.10		
Ann Arbor stage			-2.377	0.020
I-II	41	501.22 ± 85.50		
III-IV	27	554.56 ± 97.83		
ECOG scores			-2.906	0.005
< 2	46	498.82 ± 95.30		
≥ 2	22	571.70 ± 99.82		
IPI scores			-1.378	0.173
0-1	36	506.60 ± 101.02		
2-5	32	540.07 ± 98.82		
Hans			-0.445	0.658
GCB	26	515.58 ± 100.43		
Non GCB	42	526.62 ± 98.85		
<i>BCL2</i> expression			0.790	0.432
< 50%	40	530.03 ± 93.04		
≥ 50%	28	511.50 ± 98.20		
Ki-67			-0.402	0.689
< 70%	23	515.53 ± 99.40		
≥ 70%	45	525.91 ± 101.43		

SII: Systemic immune inflammation index; IPI: International prognostic index; ECOG: Eastern Cooperative Oncology Group; GCB: Germinal center B-cell.

lower than those with low SII (< 521.50), low LMR (< 2.67), and low LMR/LDH ($P < 0.05$), as shown in [Figure 1](#) and [Table 4](#).

Correlation analysis

[Table 5](#) shows a significant positive correlation between the SII, LMR, and LMR/LDH ($P < 0.05$).

Multivariate analysis of prognosis

Clinicopathological features, the SII, the LMR, and the LMR/LDH were taken as independent variables and prognosis as a dependent variable for Cox proportional risk regression analysis. The results showed that the SII, LMR and LMR/LDH were influencing factors for the prognosis of DLBCL patients [hazard ratio (HR) = 1.143, 1.665, and 1.704, respectively; $P < 0.05$], as shown in [Table 6](#).

DISCUSSION

In malignant tumors, inflammatory reaction plays a vital role in the progression, invasion, and metastasis of cancer cells. The most common malignant tumors of the hematological system are lymphomas. Lymphomas originate from lymph nodes and lymphoid tissue in the immune system. DLBCL is the most common subtype of

Table 2 The comparison of ratio of lymphocytes to monocytes in patients with different clinicopathological features

Clinicopathological features	LMR	<i>t</i>	<i>P</i> value
Sex		-0.976	0.333
Male	2.61 ± 0.45		
Female	2.74 ± 0.65		
Age (yr)		0.283	0.778
< 60 year	2.70 ± 0.49		
≥ 60 year	2.66 ± 0.57		
Ann Arbor stage		-4.559	< 0.001
I-II	2.41 ± 0.52		
III-IV	3.06 ± 0.64		
ECOG scores		-3.280	0.002
< 2	2.52 ± 0.50		
≥ 2	2.98 ± 0.62		
IPI scores		-2.339	0.022
0-1	2.54 ± 0.52		
2-5	2.82 ± 0.46		
Hans		-0.338	0.737
GCB	2.64 ± 0.43		
Non GCB	2.68 ± 0.50		
<i>BCL2</i> expression		-0.173	0.863
< 50%	2.66 ± 0.44		
≥ 50%	2.68 ± 0.51		
Ki-67		0.442	0.660
< 70%	2.71 ± 0.55		
≥ 70%	2.65 ± 0.52		

LMR: Ratio of lymphocytes to monocytes; IPI: International prognostic index; ECOG: Eastern Cooperative Oncology Group; GCB: Germinal center B-cell.

lymphomas accounting for 30%–40% of all adult NHLs, and its occurrence is associated with inflammation. The IPI, which includes age, LDH, number of extranodal lesions, Ann Arbor score, and ECOG score, can evaluate the prognosis of DLBCL patients. However, its use in accurately identifying high-risk patients and guiding treatment decisions is poor. Therefore, finding other effective biomarkers to predict the prognosis of DLBCL patients is important. Studies have shown that inflammation has a dual function on malignant tumors[9-11]. Recently, some serum markers capable of measuring inflammatory states have been proposed. These markers, including the SII, LMR, and LMR/LDH, such as those found in this study, can predict the prognosis of patients with tumors[12].

Liu *et al*[13] suggested that the body's immune reaction to tumor cells, tumor load, and microenvironment greatly affects the prognosis of DLBCL patients. Lymphocytes play an immune surveillance role, which can effectively remove the malignant cells in a normal patient. When the lymphocyte count decreases, it leads to insufficient tumor inhibition in the body and promotes tumor growth and metastasis[14]. A report showed that lymphomas have high morbidity in immunodeficient patients, which further illustrates the importance of immunosuppression in lymphoma proliferation [15]. Another Study has also suggested that the LMR can reflect the body's immune status, and its decrease indicates host immune dysfunction. Thus, it can be used to predict the survival of patients with various malignant tumors[16].

DLBCL is a systemic disease that develops rapidly and often involves lymph nodes and other organs, such as the stomach, testes, and central nervous system[17].

Table 3 The comparison of ratio of lymphocytes to monocytes to lactate dehydrogenase in patients with different clinicopathological features

Clinicopathological features	LMR/LDH	<i>t</i>	<i>P</i> value
Sex		-1.947	0.056
Male	0.38 ± 0.10		
Female	0.43 ± 0.11		
Age (yr)		0.796	0.429
< 60	0.41 ± 0.09		
≥ 60	0.39 ± 0.10		
Ann Arbor stage		-4.799	< 0.001
I-II	0.36 ± 0.08		
III-IV	0.46 ± 0.09		
ECOG scores		-5.977	< .001
< 2	0.35 ± 0.09		
≥ 2	0.50 ± 0.11		
IPI scores		-4.366	< 0.001
0-1	0.36 ± 0.08		
2-5	0.45 ± 0.09		
Hans		0.853	0.397
GCB	0.41 ± 0.10		
Non GCB	0.39 ± 0.09		
<i>BCL2</i> expression		-0.964	0.339
< 50%	0.39 ± 0.08		
≥ 50%	0.41 ± 0.09		
Ki-67		0.835	0.407
< 70%	0.41 ± 0.10		
≥ 70%	0.39 ± 0.09		

LMR: Ratio of lymphocytes to monocytes; LDH: Lactate dehydrogenase; IPI: International prognostic index; ECOG: Eastern Cooperative Oncology Group; GCB: Germinal center B-cell.

Computed tomography (CT) is usually used to evaluate tumor size to determine tumor load. A positron emission tomography (PET)/CT scan is the most sensitive and has a high specificity, although due to its high cost, clinical application is usually limited. Some studies have shown that in DLBCL patients, PET/CT scan results were significantly positively correlated with serum LDH levels; thus, the LMR/LDH can be used to predict the prognosis of patients. The SII is a novel index, based on neutrophil, lymphocyte, and platelet counts, used as a composite indicator of the body's inflammatory response. As previously discussed, inflammation is an independent risk factor of various malignant tumors, especially in post-treatment patients[18]. According to our study, the SII of patients with Ann Arbor stage III-IV and ECOG score ≥ 2 was significantly higher than that of those with Ann Arbor stage I-II and ECOG score < 2 ($P < 0.05$), indicating that the SII was closely related to the clinical stage and severity of disease. The ECOG score is the prognostic system scoring criteria for diffuse large B-cell lymphoma: the higher the score, the higher the Ann Arbor stage, the worse the patient's prognosis, and the more serious the disease progression. In our study, the progression-free survival time of patients with high SII (≥ 521.50) was significantly lower than that of those with low SII (< 521.50) ($P < 0.05$), indicating that the SII is related to the prognosis of DLBCL patients, consistent with previous studies. In addition, through multivariate analysis, our study also found that the SII is a significant factor influencing the prognosis of DLBCL patients (HR = 1.143, 1.665, and

Table 4 The progression-free survival times of patients with different systemic immune inflammation index, ratio of lymphocytes to monocytes and ratio of lymphocytes to monocytes to lactate dehydrogenase expression

Groups	Median progression free survival time	95%CI	χ^2	P value
SII high expression	34 mo	32.52-38.50	7.742	0.222
SII low expression	42 mo	39.50-46.16		
LMR high expression	35 mo	33.42-36.58	8.356	0.004
LMR low expression	43 mo	40.64-45.36		
LMR/LDH high expression	35 mo	33.49-36.51	15.163	0.000
LMR/LDH low expression	43 mo	40.73-45.27		

SII: Systemic immune inflammation index; LMR: Ratio of lymphocytes to monocytes; LDH: Lactate dehydrogenase.

Table 5 Correlation analysis

Index	SII	LMR	LMR/LDH
SII	-	0.451 ^a	0.322 ^a
LMR	0.451 ^a	-	0.511 ^a
LMR/LDH	0.322 ^a	0.511 ^a	-

^a $P < 0.05$ between the groups. SII: Systemic immune inflammation index; LMR: Ratio of lymphocytes to monocytes; LDH: Lactate dehydrogenase.

Table 6 Cox proportional risk regression results

Index	HR (95%CI)	P value
Sex	0.882 (0.810-1.102)	0.443
Age	1.343 (1.102-1.928)	0.021
Ann Arbor stage	1.892 (1.303-2.811)	0.004
ECOG scores	1.783 (1.232-2.704)	0.014
IPI scores	1.903 (1.454-2.554)	0.009
Hans	0.928 (0.783-1.432)	0.323
<i>BCL2</i> expression	0.782 (0.662-1.044)	0.314
Ki-67	1.102 (0.922-1.782)	0.401
SII	1.143 (1.044-1.604)	0.020
LMR	1.665 (1.182-2.433)	0.006
LMR/LDH	1.704 (1.115-2.302)	0.004

IPI: International prognostic index; ECOG: Eastern Cooperative Oncology Group; GCB: Germinal center B-cell; SII: Systemic immune inflammation index; LMR: Ratio of lymphocytes to monocytes; LDH: Lactate dehydrogenase.

1.704, respectively; $P < 0.05$).

In our study, the ratio of LMR to LDH was used as a marker of immune response and tumor load on the prognosis of DLBCL patients. Results have shown that, the progression-free survival time of patients with high LMR (≥ 2.67) and high LMR/LDH (> 0.40) was significantly shorter than that of those with low LMR (< 2.67) and low LMR/LDH ($P < 0.05$). These results suggest that the LMR/LDH and LMR reflect the immune status of the host, which is related to the prognosis of patients. Correlation analysis of the SII, LMR, and LMR/LDH showed that there was a positive correlation among the SII, LMR, and LMR/LDH ($P < 0.05$) and that the LMR and LMR/LDH were influencing factors for the prognosis of DLBCL patients ($P < 0.05$). Studies have found that the LMR is the independent index to monitor the recurrence and progression in

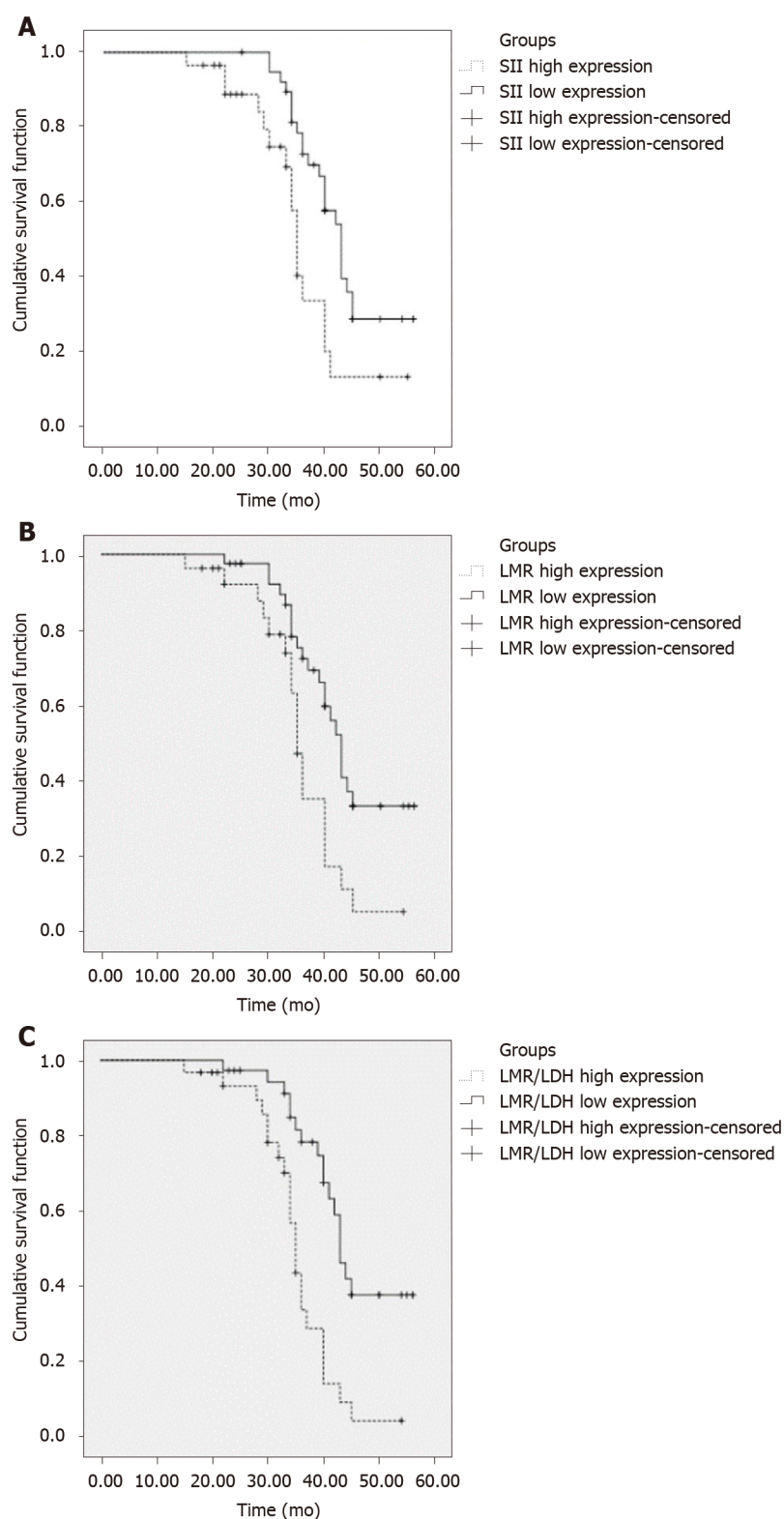


Figure 1 Survival curve diagram. A: Systemic immune inflammation index groups; B: Ratio of lymphocytes to monocytes groups; C: Ratio of lymphocytes to monocytes to lactate dehydrogenase groups. SII: Systemic immune inflammation index; LDH: Lactate dehydrogenase; LMR: Ratio of lymphocytes to monocytes.

DLBCL patients and that a decrease in the LMR is one of the factors in DLBCL recurrence[19,20]. Our study analyzed the effect of the LMR on the prognosis of DLBCL patients, which was consistent with the results of previous studies. Currently, there are few reports on the effect of the LMR/LDH on the prognosis of DLBCL patients.

Due to the small sample size, the results in this study may not be representative enough of DLBCL patients and thus may be prone to bias. Therefore, it is necessary to perform larger studies, such as a multicenter, large sample prospective study, on the

relationship between cytokine levels and prognosis of DLBCL patients to help clinicians choose a reasonable therapeutic regimen.

CONCLUSION

In conclusion, the SII, LMR, and LMR/LDH in DLBCL patients were related to the clinicopathological features of the patients to a certain extent and were also influencing factors for the prognosis of DLBCL patients.

ARTICLE HIGHLIGHTS

Research background

Diffuse large B-cell lymphoma (DLBCL), the most common malignant proliferative disease of the lymphatic system, is commonly associated with inflammation.

Research motivation

It is still necessary to find effective biomarkers to predict the prognosis and recurrence of DLBCL among patients.

Research objectives

We discussed the association between the systemic immune inflammation index (SII), ratio of lymphocytes to monocytes (LMR), ratio of LMR to lactate dehydrogenase (LDH), and prognosis of DLBCL patients.

Research methods

Total 68 patients with diffuse large B-cell lymphoma selected for treatment in our hospital. The differences in the SII, LMR, and LMR/LDH among patients with different clinicopathological features were analyzed.

Research results

SII, LMR, and LMR/LDH were influencing factors for the prognosis of DLBCL patients.

Research conclusions

The SII, LMR, and LMR/LDH in DLBCL patients were related to the clinicopathological features of the patients to a certain extent and were also influencing factors for the prognosis of DLBCL patients.

Research perspectives

It is necessary to perform larger studies to help clinicians choose a reasonable therapeutic regimen.

REFERENCES

- 1 Abadi U, Peled L, Gurion R, Rotman-Pikielny P, Raanani P, Ellis MH, Rozovski U. Prevalence and clinical significance of hypercalcemia at diagnosis in diffuse large B-cell lymphoma. *Leuk Lymphoma* 2019; **60**: 2922-2926 [PMID: 31167584 DOI: 10.1080/10428194.2019.1620946]
- 2 Nowakowski GS, Feldman T, Rimsza LM, Westin JR, Witzig TE, Zinzani PL. Integrating precision medicine through evaluation of cell of origin in treatment planning for diffuse large B-cell lymphoma. *Blood Cancer J* 2019; **9**: 48 [PMID: 31097684 DOI: 10.1038/s41408-019-0208-6]
- 3 Matsuki E, Bohn OL, El Jamal S, Pichardo JD, Zelenetz AD, Younes A, Teruya-Feldstein J. Lymphocyte-to-Monocyte Ratio May Serve as a Better Prognostic Indicator Than Tumor-associated Macrophages in DLBCL Treated With Rituximab. *Appl Immunohistochem Mol Morphol* 2019; **27**: 572-580 [PMID: 30106758 DOI: 10.1097/PAI.0000000000000645]
- 4 Gorodetskiy VR, Probatova NA, Radenska-Lopovok SG, Ryzhikova NV, Sidorova YV, Sudarikov AB. Clonal relationship of marginal zone lymphoma and diffuse large B-cell lymphoma in Sjogren's syndrome patients: case series study and review of the literature. *Rheumatol Int* 2020; **40**: 499-506 [PMID: 31707561 DOI: 10.1007/s00296-019-04470-x]
- 5 Ollila TA, Olszewski AJ. Extranodal Diffuse Large B Cell Lymphoma: Molecular Features, Prognosis, and Risk of Central Nervous System Recurrence. *Curr Treat Options Oncol* 2018; **19**: 38

- [PMID: 29931605 DOI: 10.1007/s11864-018-0555-8]
- 6 **Feng JF**, Chen S, Yang X. Systemic immune-inflammation index (SII) is a useful prognostic indicator for patients with squamous cell carcinoma of the esophagus. *Medicine (Baltimore)* 2017; **96**: e5886 [PMID: 28121932 DOI: 10.1097/MD.0000000000005886]
 - 7 **Lolli C**, Basso U, Derosa L, Scarpi E, Sava T, Santoni M, Crabb SJ, Massari F, Aieta M, Contedua V, Maruzzo M, La Russa F, Wheeler M, Berardi R, Galli L, De Giorgi U. Systemic immune-inflammation index predicts the clinical outcome in patients with metastatic renal cell cancer treated with sunitinib. *Oncotarget* 2016; **7**: 54564-54571 [PMID: 27409344 DOI: 10.18632/oncotarget.10515]
 - 8 **Li S**, Young KH, Medeiros LJ. Diffuse large B-cell lymphoma. *Pathology* 2018; **50**: 74-87 [PMID: 29167021 DOI: 10.1016/j.pathol.2017.09.006]
 - 9 **Chiappella A**, Castellino A, Nicolosi M, Santambrogio E, Vitolo U. Diffuse Large B-cell Lymphoma in the elderly: standard treatment and new perspectives. *Expert Rev Hematol* 2017; **10**: 289-297 [PMID: 28290728 DOI: 10.1080/17474086.2017.1305264]
 - 10 **Sehn LH**, Berry B, Chhanabhai M, Fitzgerald C, Gill K, Hoskins P, Klasa R, Savage KJ, Shenkier T, Sutherland J, Gascoyne RD, Connors JM. The revised International Prognostic Index (R-IPI) is a better predictor of outcome than the standard IPI for patients with diffuse large B-cell lymphoma treated with R-CHOP. *Blood* 2007; **109**: 1857-1861 [PMID: 17105812 DOI: 10.1182/blood-2006-08-038257]
 - 11 **Jomrich G**, Paireder M, Kristo I, Baierl A, Ilhan-Mutlu A, Preusser M, Asari R, Schoppmann SF. High Systemic Immune-Inflammation Index is an Adverse Prognostic Factor for Patients With Gastroesophageal Adenocarcinoma. *Ann Surg* 2021; **273**: 532-541 [PMID: 31425286 DOI: 10.1097/SLA.0000000000003370]
 - 12 **Kumarasamy C**, Sabarimurugan S, Madurantakam RM, Lakhotiya K, Samiappan S, Baxi S, Nachimuthu R, Gothandam KM, Jayaraj R. Prognostic significance of blood inflammatory biomarkers NLR, PLR, and LMR in cancer-A protocol for systematic review and meta-analysis. *Medicine (Baltimore)* 2019; **98**: e14834 [PMID: 31192906 DOI: 10.1097/MD.00000000000014834]
 - 13 **Liu J**, Gao Y, Kan BH, Zhou L. [Systematic review and meta-analysis of randomized controlled trials of Chinese herbal medicine in treatment of multiple sclerosis]. *Zhong Xi Yi Jie He Xue Bao* 2012; **10**: 141-153 [PMID: 22313881 DOI: 10.3736/jcim20120204]
 - 14 **Yang Z**, Yu W, Wang S, Zhou X, Liu S, Ma S. Peripheral blood lymphocyte subsets of newly diagnosed DLBCL patients and their dynamic changes with rituximab based immunochemotherapy. *Leuk Lymphoma* 2019; **60**: 2909-2916 [PMID: 31120360 DOI: 10.1080/10428194.2019.1617861]
 - 15 **Hu R**, Winter A, Hill BT. The Emerging Role of Minimal Residual Disease Testing in Diffuse Large B-Cell Lymphoma. *Curr Oncol Rep* 2019; **21**: 44 [PMID: 30941515 DOI: 10.1007/s11912-019-0792-4]
 - 16 **Wang J**, Gao K, Lei W, Dong L, Xuan Q, Feng M, Wang J, Ye X, Jin T, Zhang Z, Zhang Q. Lymphocyte-to-monocyte ratio is associated with prognosis of diffuse large B-cell lymphoma: correlation with CD163 positive M2 type tumor-associated macrophages, not PD-1 positive tumor-infiltrating lymphocytes. *Oncotarget* 2017; **8**: 5414-5425 [PMID: 28036275 DOI: 10.18632/oncotarget.14289]
 - 17 **Miyahara Y**, Takashi S, Shimizu Y, Ohtsuka M. The prognostic impact of neutrophil-to-lymphocyte ratio (NLR) and lymphocyte-to-monocyte ratio (LMR) in patients with distal bile duct cancer. *World J Surg Oncol* 2020; **18**: 78 [PMID: 32321522 DOI: 10.1186/s12957-020-01847-2]
 - 18 **Zhang SN**, Li MJ, Yuan FF, Chen L, Mi RH, Wei XD, Song YP, Yin QS. [Efficacy and prognosis of the dynamic monitoring lymphocyte to monocyte ratio in patients with diffuse large B-cell lymphoma]. *Zhonghua Yi Xue Za Zhi* 2019; **99**: 3139-3144 [PMID: 31694104 DOI: 10.3760/cma.j.issn.0376-2491.2019.40.004]
 - 19 **Yan-Li L**, Kang-Sheng G, Yue-Yin P, Yang J, Zhi-Min Z. The lower peripheral blood lymphocyte/monocyte ratio assessed during routine follow-up after standard first-line chemotherapy is a risk factor for predicting relapse in patients with diffuse large B-cell lymphoma. *Leuk Res* 2014; **38**: 323-328 [PMID: 24439567 DOI: 10.1016/j.leukres.2013.12.005]
 - 20 **Yang D**, Su LP. [Influence of Peripheral Blood Lymphocyte/Monocyte ratio (LMR) and Its Ratio to Lactate Dehydrogenase on Prognosis of Patients with Diffuse Large B-Cell Lymphoma]. *Zhongguo Shi Yan Xue Ye Xue Za Zhi* 2020; **28**: 1563-1569 [PMID: 33067955]



Published by **Baishideng Publishing Group Inc**
7041 Koll Center Parkway, Suite 160, Pleasanton, CA 94566, USA

Telephone: +1-925-3991568

E-mail: bpgoffice@wjgnet.com

Help Desk: <https://www.f6publishing.com/helpdesk>

<https://www.wjgnet.com>

