

World Journal of *Clinical Cases*

World J Clin Cases 2021 February 6; 9(4): 764-998



MINIREVIEWS

- 764 Chiari malformations in children: An overview
Spazzapan P, Bosnjak R, Prestor B, Velnar T

ORIGINAL ARTICLE

Case Control Study

- 774 Effect of hospital discharge plan for children with type 1 diabetes on discharge readiness, discharge education quality, and blood glucose control
Tong HJ, Qiu F, Fan L

Retrospective Study

- 784 Effect of biofeedback combined with high-quality nursing in treatment of functional constipation
Zhao X, Meng J, Dai J, Yin ZT
- 792 Radioactive ¹²⁵I seed implantation for pancreatic cancer with unexpected liver metastasis: A preliminary experience with 26 patients
Li CG, Zhou ZP, Jia YZ, Tan XL, Song YY

Clinical Trials Study

- 801 Biliary stent combined with iodine-125 seed strand implantation in malignant obstructive jaundice
Wang HW, Li XJ, Li SJ, Lu JR, He DF

Observational Study

- 812 Effects of different statins application methods on plaques in patients with coronary atherosclerosis
Wu X, Liu XB, Liu T, Tian W, Sun YJ
- 822 Usefulness of prenatal magnetic resonance imaging in differential diagnosis of fetal congenital cystic adenomatoid malformation and bronchopulmonary sequestration
Li Z, Lv YD, Fang R, Li X, Luo ZQ, Xie LH, Zhu L

CASE REPORT

- 830 Reciprocal hematogenous osteomyelitis of the femurs caused by *Anaerococcus prevotii*: A case report
Daunaraite K, Uvarovas V, Ulevicius D, Sveikata T, Petryla G, Kurtinaitis J, Satkauskas I
- 838 Gastroduodenal intussusception caused by gastric gastrointestinal stromal tumor: A case report and review of the literature
Hsieh YL, Hsu WH, Lee CC, Wu CC, Wu DC, Wu JY

- 847** Altemeier perineal rectosigmoidectomy with indocyanine green fluorescence imaging for a female adolescent with complete rectal prolapse: A case report
Yamamoto T, Hyakudomi R, Takai K, Taniura T, Uchida Y, Ishitobi K, Hirahara N, Tajima Y
- 854** Long-term survival in a patient with Hutchinson-Gilford progeria syndrome and osteosarcoma: A case report
Hayashi K, Yamamoto N, Takeuchi A, Miwa S, Igarashi K, Araki Y, Yonezawa H, Morinaga S, Asano Y, Tsuchiya H
- 864** Recurrent medullary thyroid carcinoma treated with percutaneous ultrasound-guided radiofrequency ablation: A case report
Tong MY, Li HS, Che Y
- 871** "Bull's eye" appearance of hepatocellular adenomas in patients with glycogen storage disease type I – atypical magnetic resonance imaging findings: Two case reports
Vernuccio F, Austin S, Meyer M, Guy CD, Kishnani PS, Marin D
- 878** Clinical characteristics and ABCC2 genotype in Dubin-Johnson syndrome: A case report and review of the literature
Wu H, Zhao XK, Zhu JJ
- 886** Adult-onset Still's disease evolving with multiple organ failure and death: A case report and review of the literature
Han ZB, Wu J, Liu J, Li HM, Guo K, Sun T
- 898** Open reduction and Herbert screw fixation of Pipkin type IV femoral head fracture in an adolescent: A case report
Liu Y, Dai J, Wang XD, Guo ZX, Zhu LQ, Zhen YF
- 904** Acute pancreatitis with pulmonary embolism: A case report
Fu XL, Liu FK, Li MD, Wu CX
- 912** Apert syndrome diagnosed by prenatal ultrasound combined with magnetic resonance imaging and whole exome sequencing: A case report
Chen L, Huang FX
- 919** Application of neoadjuvant chemotherapy combined with anlotinib in occult breast cancer: A case report and review of literature
Zhang Y, Wu D, Zhao B, Tian XL, Yao TC, Li F, Liu WF, Shi AP
- 927** Atypical presentation of shoulder brucellosis misdiagnosed as subacromial bursitis: A case report
Wang FS, Shahzad K, Zhang WG, Li J, Tian K
- 935** Retroperitoneal teratoma resection assisted by 3-dimensional visualization and virtual reality: A case report
Liu T, Chen K, Xia RM, Li WG
- 943** Renal failure and hepatitis following ingestion of raw grass carp gallbladder: A case report
Zhou LN, Dong SS, Zhang SZ, Huang W

- 951** Pheochromocytoma as a cause of repeated acute myocardial infarctions, heart failure, and transient erythrocytosis: A case report and review of the literature
Shi F, Sun LX, Long S, Zhang Y
- 960** Immediate implant placement in combination with platelet rich-fibrin into extraction sites with periapical infection in the esthetic zone: A case report and review of literature
Fang J, Xin XR, Li W, Wang HC, Lv HX, Zhou YM
- 970** Acute inferior wall myocardial infarction induced by aortic dissection in a young adult with Marfan syndrome: A case report
Zhang YX, Yang H, Wang GS
- 976** Primary nonkeratinizing squamous cell carcinoma of the scapular bone: A case report
Li Y, Zuo JL, Tang JS, Shen XY, Xu SH, Xiao JL
- 983** Fertility-sparing surgeries without adjuvant therapy through term pregnancies in a patient with low-grade endometrial stromal sarcoma: A case report
Gu YZ, Duan NY, Cheng HX, Xu LQ, Meng JL
- 992** Isolated interrupted aortic arch in an adult: A case report
Dong SW, Di DD, Cheng GX

ABOUT COVER

Editorial Board Member of *World Journal of Clinical Cases*, Salim R Surani, MD, MPH, MSHM, FACP, FCCP, FAASM is Chair of Critical Care at Corpus Christi Medical Center, Adjunct Clinical Professor of Medicine, Department of Pulmonary, Critical Care and Sleep Medicine at Texas A&M University, and Program Director of the Pulmonary Fellowship Program at Bay Area Medical Center, Corpus Christi. His training and education involved fellowship in Pulmonary Medicine at Baylor College of Medicine, Master's in Public Health, & Epidemiology from Yale University, and Master's in Health Management from University of Texas, Dallas. Having authored more than 250 peer-reviewed articles and written several books and book chapters. (L-Editor: Filipodia)

AIMS AND SCOPE

The primary aim of *World Journal of Clinical Cases* (WJCC, *World J Clin Cases*) is to provide scholars and readers from various fields of clinical medicine with a platform to publish high-quality clinical research articles and communicate their research findings online.

WJCC mainly publishes articles reporting research results and findings obtained in the field of clinical medicine and covering a wide range of topics, including case control studies, retrospective cohort studies, retrospective studies, clinical trials studies, observational studies, prospective studies, randomized controlled trials, randomized clinical trials, systematic reviews, meta-analysis, and case reports.

INDEXING/ABSTRACTING

The WJCC is now indexed in Science Citation Index Expanded (also known as SciSearch®), Journal Citation Reports/Science Edition, Scopus, PubMed, and PubMed Central. The 2020 Edition of Journal Citation Reports® cites the 2019 impact factor (IF) for WJCC as 1.013; IF without journal self cites: 0.991; Ranking: 120 among 165 journals in medicine, general and internal; and Quartile category: Q3. The WJCC's CiteScore for 2019 is 0.3 and Scopus CiteScore rank 2019: General Medicine is 394/529.

RESPONSIBLE EDITORS FOR THIS ISSUE

Production Editor: Yan-Xia Xing; Production Department Director: Yun-Xiaojian Wu; Editorial Office Director: Jin-Lai Wang.

NAME OF JOURNAL

World Journal of Clinical Cases

ISSN

ISSN 2307-8960 (online)

LAUNCH DATE

April 16, 2013

FREQUENCY

Thrice Monthly

EDITORS-IN-CHIEF

Dennis A Bloomfield, Sandro Vento, Bao-gan Peng

EDITORIAL BOARD MEMBERS

<https://www.wjgnet.com/2307-8960/editorialboard.htm>

PUBLICATION DATE

February 6, 2021

COPYRIGHT

© 2021 Baishideng Publishing Group Inc

INSTRUCTIONS TO AUTHORS

<https://www.wjgnet.com/bpg/gerinfo/204>

GUIDELINES FOR ETHICS DOCUMENTS

<https://www.wjgnet.com/bpg/GerInfo/287>

GUIDELINES FOR NON-NATIVE SPEAKERS OF ENGLISH

<https://www.wjgnet.com/bpg/gerinfo/240>

PUBLICATION ETHICS

<https://www.wjgnet.com/bpg/GerInfo/288>

PUBLICATION MISCONDUCT

<https://www.wjgnet.com/bpg/gerinfo/208>

ARTICLE PROCESSING CHARGE

<https://www.wjgnet.com/bpg/gerinfo/242>

STEPS FOR SUBMITTING MANUSCRIPTS

<https://www.wjgnet.com/bpg/GerInfo/239>

ONLINE SUBMISSION

<https://www.f6publishing.com>

Retrospective Study

Radioactive ^{125}I seed implantation for pancreatic cancer with unexpected liver metastasis: A preliminary experience with 26 patients

Cheng-Gang Li, Zhi-Peng Zhou, Yu-Ze Jia, Xiang-Long Tan, Yu-Yao Song

ORCID number: Cheng-Gang Li 0000-0001-7990-1300; Zhi-Peng Zhou 0000-0001-8881-1972; Yu-Ze Jia 0000-0003-2473-7907; Xiang-Long Tan 0000-0003-2185-2416; Yu-Yao Song 0000-0002-9048-0591.

Author contributions: Li CG and Zhou ZP contributed equally to this work and should be considered as co-first authors; Li CG, Zhou ZP, and Jia YZ analyzed and interpreted the data and wrote the article; Jia YZ, Tan XL, and Song YY drafted the work and collected the data; Li CG designed the study and revised the article for important intellectual content.

Institutional review board

statement: This study was reviewed and approved by the Ethics Committee of the Chinese PLA General Hospital (No. S2016-098-02).

Informed consent statement:

Patients were not required to give informed consent to the study because the analysis used anonymous clinical data that were obtained after each patient agreed to treatment by written consent.

Conflict-of-interest statement: All authors declare no conflicts of interest related to this article.

Cheng-Gang Li, Zhi-Peng Zhou, Yu-Ze Jia, Xiang-Long Tan, Yu-Yao Song, Second Department of Hepatobiliary Surgery, Chinese PLA General Hospital, Beijing 100853, China

Corresponding author: Cheng-Gang Li, MD, PhD, Associate Professor, Second Department of Hepatobiliary Surgery, Chinese PLA General Hospital, No. 28 Fuxing Road, Beijing 100853, China. lcgang301@126.com

Abstract

BACKGROUND

Preoperative diagnosis rate of pancreatic cancer has increased year by year. The prognosis of pancreatic cancer patients with unexpected liver metastasis found by intraoperative exploration is very poor, and there is no effective and unified treatment strategy.

AIM

To evaluate the therapeutic effect of radioactive ^{125}I seed implantation for pancreatic cancer patients with unexpected liver metastasis.

METHODS

The demographics and perioperative outcomes of patients who underwent ^{125}I seed implantation to treat pancreatic cancer with unexpected liver metastasis between January 1, 2017 and June 1, 2019 were retrospectively analyzed. During the operation, ^{125}I seeds were implanted into the pancreatic tumor under the guidance of intraoperative ultrasound, with a spacing of 1.5 cm and a row spacing of 1.5 cm. For patients with obstructive jaundice and digestive tract obstruction, choledochojejunostomy and gastroenterostomy were performed simultaneously. After operation, the patients were divided into a non-chemotherapy group and a chemotherapy group that received gemcitabine combined with albumin-bound paclitaxel treatment.

RESULTS

Preoperative imaging evaluation of all patients in this study showed that the tumor was resectable without liver metastasis. There were 26 patients in this study, including 18 males and 8 females, aged 60.5 ± 9.7 years. The most common tumor site was the pancreatic head (17, 65.4%), followed by the pancreatic neck and body (6, 23.2%) and pancreatic tail (3, 11.4%). Fourteen patients (53.8%)

Data sharing statement: No additional data are available.

Open-Access: This article is an open-access article that was selected by an in-house editor and fully peer-reviewed by external reviewers. It is distributed in accordance with the Creative Commons Attribution NonCommercial (CC BY-NC 4.0) license, which permits others to distribute, remix, adapt, build upon this work non-commercially, and license their derivative works on different terms, provided the original work is properly cited and the use is non-commercial. See: <http://creativecommons.org/licenses/by-nc/4.0/>

Manuscript source: Unsolicited manuscript

Specialty type: Medicine, research and experimental

Country/Territory of origin: China

Peer-review report's scientific quality classification

Grade A (Excellent): 0
Grade B (Very good): 0
Grade C (Good): 0
Grade D (Fair): 0
Grade E (Poor): 0

Received: November 16, 2020

Peer-review started: November 16, 2020

First decision: November 29, 2020

Revised: December 3, 2020

Accepted: December 11, 2020

Article in press: December 11, 2020

Published online: February 6, 2021

P-Reviewer: Ciezki J, Kressel A

S-Editor: Huang P

L-Editor: Wang TQ

P-Editor: Xing YX



underwent palliative surgery and postoperative pain relief occurred in 22 patients (84.6%). The estimated blood loss in operation was 148.3 ± 282.1 mL and one patient received blood transfusion. The postoperative hospital stay was 7.6 ± 2.8 d. One patient had biliary fistula, one had pancreatic fistula, and all recovered after conservative treatment. After operation, 7 patients received chemotherapy and 19 did not. The 1-year survival rate was significantly higher in patients who received chemotherapy than in those who did not (68.6% *vs* 15.8%, $P = 0.012$). The mean overall survival of patients in the chemotherapy group and non-chemotherapy group was 16.3 mo and 10 mo, respectively ($\chi^2 = 7.083$, $P = 0.008$).

CONCLUSION

Radioactive ^{125}I seed implantation combined with postoperative chemotherapy can prolong the survival time and relieve pain of pancreatic cancer patients with unexpected liver metastasis.

Key Words: Pancreatic cancer; Liver metastases; Radioactive ^{125}I seeds; Radiotherapy; Permanent implantation; Therapeutic effect

©The Author(s) 2021. Published by Baishideng Publishing Group Inc. All rights reserved.

Core Tip: To evaluate the therapeutic effect of radioactive ^{125}I seed implantation for pancreatic cancer patients with unexpected liver metastasis. We found that it can prolong the survival time and relieve pain of pancreatic cancer patients with unexpected liver metastasis.

Citation: Li CG, Zhou ZP, Jia YZ, Tan XL, Song YY. Radioactive ^{125}I seed implantation for pancreatic cancer with unexpected liver metastasis: A preliminary experience with 26 patients. *World J Clin Cases* 2021; 9(4): 792-800

URL: <https://www.wjgnet.com/2307-8960/full/v9/i4/792.htm>

DOI: <https://dx.doi.org/10.12998/wjcc.v9.i4.792>

INTRODUCTION

In recent years, with the development of computer technology and imaging technology combined with the detection of serum tumor markers, the preoperative diagnosis rate of pancreatic cancer has increased year by year. Pancreatic cancer is characterized by insidious onset, rapid progress, and poor prognosis^[1,2]. It is a common tumor in the digestive system, and patients usually lack of early symptoms. Most of patients are at the late stage of disease when diagnosed, and radical resection is the most effective treatment for pancreatic cancer^[3]. Clinically, only 20% of patients have surgical conditions, while the rest can only receive palliative treatment^[4-6].

Even if enhanced computed tomography (CT), magnetic resonance imaging (MRI), or positron emission tomography/computed tomography (PET/CT) was performed before the operation, about 8% of the patients who planned to undergo radical resection still had liver metastasis found during the exploration. Liver metastasis is a sign of advanced stage of pancreatic cancer. Usually, surgeons only terminate the operation for such patients after pathology. If there is obstructive jaundice or digestive tract obstruction, palliative operations such as cholecystojejunostomy and gastrointestinal anastomosis can be performed.

The liver is the most common organ with metastasis of pancreatic cancer. The average survival time of pancreatic cancer patients with liver metastasis is only 3-6 mo^[7]. There is no consensus on the treatment strategy for patients with pancreatic cancer and liver metastasis. There are simultaneous pancreatectomy combined with liver metastasis resection, first pancreatectomy followed by liver metastasis resection, resection of pancreatic cancer combined with radiofrequency ablation of liver metastasis, systemic chemotherapy combined with TACE treatment of liver metastasis, immunotherapy, and so on. None of the above treatments is satisfactory.

Since 1965, radioactive ^{125}I seeds began to be used in cancer treatment. It was initially used in the treatment of prostate cancer and achieved success^[8]. A number of

studies have shown that implantation of radioactive seeds in the treatment of pancreatic cancer can benefit the survival of patients, reduce pain, and improve the quality of their life^[9-11]. The purpose of this study was to summarize a single center experience with ¹²⁵I seed implantation combined with postoperative chemotherapy in the treatment of pancreatic cancer patients with unexpected liver metastasis.

MATERIALS AND METHODS

Patients

The clinical data of 26 patients with pancreatic cancer with unexpected liver metastasis who underwent ¹²⁵I seed implantation between January 1, 2017 and June 1, 2019 were retrospectively analyzed. This study was approved by the Institutional Review Board of Chinese PLA General Hospital.

Selection of the patients

The inclusion criteria were: (1) Preoperative CT, MRI, or PET-CT and other imaging examination showed no liver metastasis; (2) Primary pancreatic cancer with unexpected liver metastasis, with no other organ metastasis detected; and (3) In order to relieve jaundice and obstruction of digestive tract, anastomosis was performed and ¹²⁵I seeds were implanted in the tumor. The exclusion criteria were: (1) KPS score < 70; (2) Preoperative imaging findings of liver or other organs metastasis; and (3) Other medical conditions that contraindicated anesthesia and surgery.

Physical characteristics of ¹²⁵I seeds

The physical half-life of the ¹²⁵I seeds (China Isotope & Radiation Corporation, Beijing, China) used in this study is 59.6 d, the diameter is 0.8 mm, the length is 4.5 mm, and the wall thickness is 0.05 mm. The half value layer of the seeds for lead is 0.025 mm and it is 20.0 mm for soft tissue in human body. The activity range of a single seed is 11.1-37 MBq and it can radiate 27.4 and 31.4 keV X-ray and 35.5 keV γ -ray.

Preoperative evaluation

MRI, contrast-enhanced CT, or PET-CT was performed as a routine diagnostic procedure. During the operation, ¹²⁵I seeds were implanted into the tumor under the guidance of intraoperative ultrasound, with a spacing of 1.5 cm and a row spacing of 1.5 cm. The matched peripheral dose of ¹²⁵I seeds implanted in patients in this study was 110-160 Gy.

Perioperative data

The baseline demographics and perioperative and pathology data were obtained from the electronic medical records. The clinical outcomes, including estimated blood loss (EBL), postoperative complications, postoperative hospital stay (PHS), and overall survival time (OS), were analyzed retrospectively. Postoperative biliary fistula was defined as the outflow of bile or bile containing fluid from the abdominal drainage tube. Postoperative pancreatic fistula was defined as pancreatic juice flowing out of the body through abdominal drainage tube or incision, and the amylase content in the drainage fluid was three times higher than that in the blood.

Surgical technique and postoperative chemotherapy

During the operation, tumor metastasis and resectability of the primary tumor in the pancreas were investigated. If there was metastasis in the liver and no metastasis in other organs of the abdominal cavity, part of the liver metastases was resected and frozen pathological examination was performed. According to the location of pancreatic tumor, the Kocher incision and gastrocolic ligament were dissociated to expose the pancreatic tumor. After confirmed by pathology as pancreatic cancer, ¹²⁵I seeds were implanted into the tumor under the guidance of intraoperative ultrasound. For patients with obstructive jaundice and digestive tract obstruction, cholecystojejunostomy and gastroenterostomy were performed simultaneously. After operation, the patients were divided into a non-chemotherapy group and a chemotherapy group that received gemcitabine combined with albumin-bound paclitaxel treatment.

All patients were followed 1 mo after discharge and then at 3-mo intervals thereafter.

Statistical analysis

Continuous data are presented as the mean \pm SD or median and interquartile range according to their distributions. The Student's *t*-test was used to compare normally distributed variables between groups, whereas the Mann-Whitney *U* test was used for non-normally distributed variables. Categorical data were compared using the Chi-squared test. OS was estimated using the Kaplan-Meier method, and comparison of OS between subgroups was performed using the log-rank test. Univariate and multivariate analyses were performed using the Cox proportional hazards regression model for potential prognostic factors on OS. A *P* value of < 0.05 was considered statistically significant. All analyses were performed with IBM SPSS statistical software, version 20 (SPSS, Chicago, IL, United States).

RESULTS

Patient characteristics

There were 26 patients in this study, including 18 males and 8 females, aged 60.5 ± 9.7 years. Table 1 shows the detailed characteristics of those patients. Most of the tumors occurred in the head of the pancreas (17, 65.4%), in the pancreatic neck and body (6, 23.2%), or in the pancreatic tail (3, 11.4%). Palliative surgery was performed in 14 patients (53.8%) and postoperative pain was relieved in 22 patients (84.6%). All patients were confirmed as having pancreatic adenocarcinoma by postoperative pathology.

Perioperative outcomes

Preoperative imaging evaluation of all these patients showed that the tumor was resectable without liver metastasis. ^{125}I seeds were successfully implanted in all the patients, of whom 11 underwent choledochojunostomy, and 3 underwent choledochojunostomy combined with gastroenterostomy. The EBL in operation was 148.3 ± 282.1 (5-1500) mL and one patient needed blood transfusion. Bile fistula and pancreatic fistula occurred in one patient each, and all the patients recovered after conservative treatment. The PHS of all patients was 7.6 ± 2.8 d. Postoperative reexamination of CT showed that the ^{125}I seeds were evenly distributed in tumor (Figure 1).

Postoperative survival analysis

Three patients were still alive and 23 died at the last follow-up. Among all patients, 19 did not receive chemotherapy, and 7 received chemotherapy. Table 2 shows the comparison between the two groups of patients. No significant difference was detected in gender, age, operation mode, or tumor location between the two groups. There was a significant difference in 1-year survival rate of patients who received chemotherapy and those who did not (68.6% *vs* 15.8%, $P = 0.012$). Figure 2 shows the significant difference in mean OS of patients who received chemotherapy and those who did not (16.3 mo *vs* 10 mo, $\chi^2 = 7.083$, $P = 0.008$).

DISCUSSION

Pancreatic cancer often develops metastasis early because of the rapid growth of tumor cells, the rich blood vessels and lymphatic vessels around the pancreas, and the lack of a complete capsule. The liver is the most common target organ for metastasis of pancreatic cancer. The metastasis pathway of cancer locating in the pancreatic head is different from that of the pancreatic body and tail^[12,13]. Cancer of the pancreas head often invades the common bile duct, duodenum, stomach, and celiac arteries, and its lymph node metastasis pathway is from the lymph nodes around the superior mesenteric artery and the lymph nodes around the aorta. However, cancer of the pancreas body and tail metastasizes to the lymph nodes of the upper pancreas and the hilum of the liver, and finally to the liver.

Liver metastasis of pancreatic cancer often has multiple focuses, which can occur in both left and right lobes of the liver. Patients often lose the chance of radical operation. For pancreatic cancer patients with liver metastasis, the treatment is limited and the total effect is not ideal. However, if the condition allows, active treatment such as surgery and interventional chemotherapy can still improve the quality of life and prolong the survival period of such patients. The biological behavior of pancreatic

Table 1 Characteristics of pancreatic cancer patients with unexpected liver metastasis (*n* = 26)

Clinicopathologic feature	Value (%)
Mean age (range), yr	60.5 ± 9.7 (38-81)
Sex, M/F	
Male	18 (69.2)
Female	8 (30.8)
Tumor location in the pancreas	
Head	17 (65.4)
Neck and body	6 (23.2)
Tail	3 (11.5)
Vascular involvement	
Any superior mesenteric vein	10 (38.5)
Any superior mesenteric artery	9 (34.6)
Both venous and arterial	8 (30.8)
Palliative operation	14 (53.8)
Choledochojejunostomy	11 (78.6)
Choledochojejunostomy and gastroenterostomy	3 (21.4)
Postoperative pain relief	
Complete remission	5 (19.2)
Partial remission	17 (65.4)
No relief	4 (15.4)
PHS (d)	7.6 ± 2.8 (4-14)
EBL (mL)	148.3 ± 282.1 (5-1500)
Postoperative complications	
Biliary fistula	1 (3.8)
Pancreatic fistula	1 (3.8)
Vital status at last follow-up	
Alive	3 (11.5)
Dead	23 (88.5%)
Median overall survival (range), mo	10.0 (1-27)

PHS: Postoperative hospital stay; EBL: Estimated blood loss.

cancer itself is not sensitive to radiotherapy, and the radiation tolerance of its surrounding tissues is low. Therefore, it is difficult for conventional external radiotherapy to accurately locate the lesion area, so as to make enough therapeutic dose of radiation reach the target area, or even reach the tumor target area; it also causes great damage to the surrounding organs^[14-16].

¹²⁵I seeds can continuously release a low dose of γ-ray when they are implanted into tumor tissue. It can damage the DNA of tumor cells and induce apoptosis of tumor cells, so as to kill the proliferative cancer cells^[17,18]. The advantages of ¹²⁵I seeds in the treatment of pancreatic cancer are local adaptation and low dose continuous therapy^[19-21]. Compared with radical resection, local implantation of ¹²⁵I seeds in pancreatic cancer has less trauma, faster postoperative recovery, less impact on patients' immunity, shorter postoperative recovery period, and less impact on early postoperative chemotherapy.

Our results showed that patients with pancreatic cancer with unexpected liver metastasis experienced pain relief and quality of life was improved after implantation of radioactive ¹²⁵I seeds. The combination of postoperative chemotherapy is helpful to

Table 2 Baseline data of patients from the two groups ($n = 26$)

Clinicopathologic feature	Non-chemotherapy ($n = 19$)	Chemotherapy ($n = 7$)	<i>P</i> value
Mean age (rang), yr	60.74 (38-81)	59.86 (48-70)	0.841
Sex, M/F			0.715
Male	14	4	
Female	5	3	
Tumor location in the pancreas			1.000
Head	12	5	
Neck and body	5	1	
Tail	2	1	
Palliative operation			0.505
Choledochojejunostomy	8	3	
Choledochojejunostomy and gastroenterostomy	1	2	
1-yr survival rate (%)	15.8	68.6	0.012

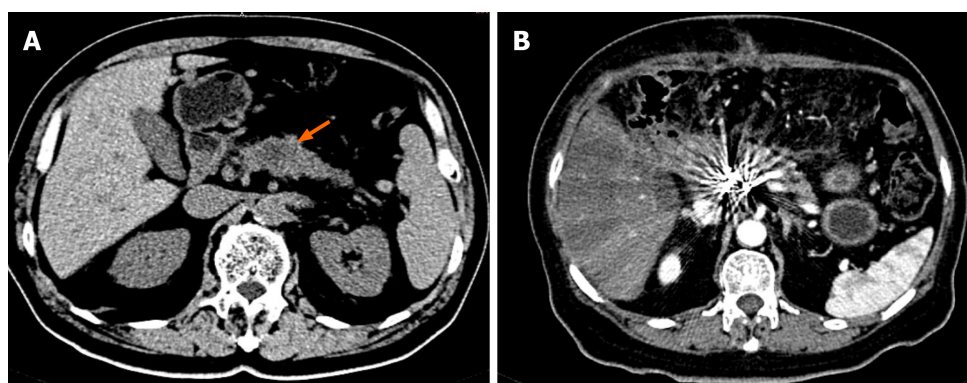


Figure 1 Radioactive ^{125}I seeds implanted in pancreatic cancer patients with unexpected liver metastasis. A: Preoperative computed tomography (CT) showed the primary pancreatic cancer (arrow); B: Postoperative CT showed the radioactive ^{125}I seeds implanted in the pancreatic cancer.

prolong the survival period of such patients. We suggest that all patients take biopsy of tumor tissue during operation, and if possible, we suggest that gene detection of biopsy samples of those patients be performed so as to choose a possible and effective scheme for further chemotherapy after operation.

In order to reduce the occurrence of pancreatic fistula and bleeding during and after radioactive seed implantation, our experience is that the puncture point is carefully sutured with 4/0 prolene suture after the puncture needle has been removed from each implantation site. During the operation, the needle channel should be carefully adjusted under the guidance of ultrasound to avoid the puncture into the blood vessel and the dilated pancreatic duct^[22,23]. The postoperative complications such as seed displacement, local embolism, pain, liver dysfunction, and pancreatic fistula were all recovered after conservative treatment in this study. The main shortcoming of this study is that the case was selected from a single center. In the next step, we will combine more centers to do this study.

CONCLUSION

In conclusion, our experience showed that the survival time could be prolonged and the quality of life be improved in pancreatic cancer patients with unexpected liver metastasis by ^{125}I seed implantation combined with postoperative chemotherapy. More cases need to be accumulated in future studies to determine the effectiveness of this treatment strategy further.

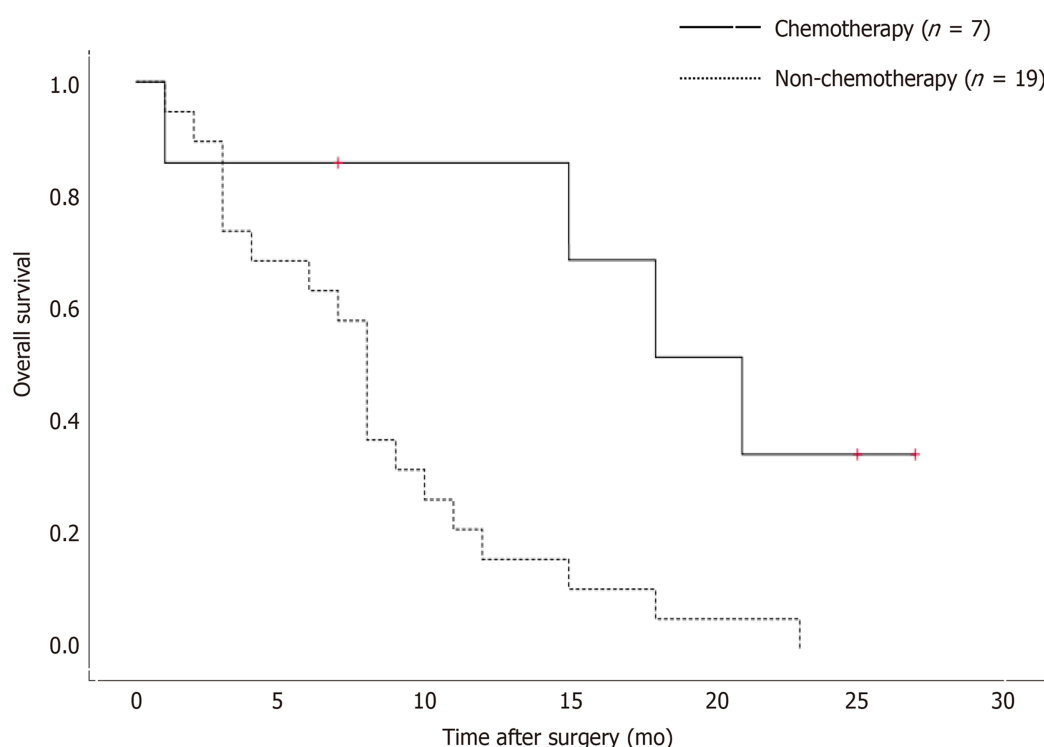


Figure 2 Kaplan-Meier cumulative survival curves according to chemotherapy status. The median survival for 7 patients who received chemotherapy was 16.3 mo, which was significantly longer than that for 17 patients who did not (10 mo; $P = 0.008$).

ARTICLE HIGHLIGHTS

Research background

The liver is the most common target organ for metastasis of pancreatic cancer. The survival time of pancreatic cancer patients with liver metastasis is very short, and they need timely and effective treatment.

Research motivation

There is no consensus on the treatment strategy for patients with pancreatic cancer and liver metastasis.

Research objectives

To evaluate the therapeutic effect of radioactive ^{125}I seed implantation for pancreatic cancer patients with unexpected liver metastasis.

Research methods

The demographics and perioperative outcomes of patients who underwent ^{125}I seed implantation to treat pancreatic cancer with unexpected liver metastasis were retrospectively analyzed.

Research results

There was a significant difference in the 1-year survival rate between the chemotherapy group and non-chemotherapy group. The mean overall survival of patients in the chemotherapy group was 16.3 mo, while it was 10 mo in the non-chemotherapy group.

Research conclusions

The survival time of pancreatic cancer patients with unexpected liver metastasis could be prolonged, and their quality of life could be improved by ^{125}I seed implantation combined with postoperative chemotherapy.

Research perspectives

With the development of science and technology, the cure rate of cancer will be higher

and higher.

REFERENCES

- 1 **Zhou B**, Wu D, Liu H, Du LT, Wang YS, Xu JW, Qiu FB, Hu SY, Zhan HX. Obesity and pancreatic cancer: An update of epidemiological evidence and molecular mechanisms. *Pancreatol* 2019; **19**: 941-950 [PMID: [31447281](#) DOI: [10.1016/j.pan.2019.08.008](#)]
- 2 **Noel M**, Fiscella K. Disparities in Pancreatic Cancer Treatment and Outcomes. *Health Equity* 2019; **3**: 532-540 [PMID: [31663065](#) DOI: [10.1089/heap.2019.0057](#)]
- 3 **Rawla P**, Sunkara T, Gaduputi V. Epidemiology of Pancreatic Cancer: Global Trends, Etiology and Risk Factors. *World J Oncol* 2019; **10**: 10-27 [PMID: [30834048](#) DOI: [10.14740/wjon1166](#)]
- 4 **Shridhar R**, Takahashi C, Huston J, Meredith KL. Neoadjuvant therapy and pancreatic cancer: a national cancer database analysis. *J Gastrointest Oncol* 2019; **10**: 663-673 [PMID: [31392047](#) DOI: [10.21037/jgo.2019.02.09](#)]
- 5 **Furukawa K**, Shiba H, Hamura R, Haruki K, Fujiwara Y, Usuba T, Nakabayashi Y, Misawa T, Okamoto T, Yanaga K. Prognostic Factors in Patients With Recurrent Pancreatic Cancer: A Multicenter Database Analysis. *Anticancer Res* 2020; **40**: 293-298 [PMID: [31892579](#) DOI: [10.21873/anticancer.13952](#)]
- 6 **Wegner RE**, Verma V, Hasan S, Schiffman S, Thakkar S, Horne ZD, Kulkarni A, Williams HK, Monga D, Finley G, Kirichenko AV. Incidence and risk factors for post-operative mortality, hospitalization, and readmission rates following pancreatic cancer resection. *J Gastrointest Oncol* 2019; **10**: 1080-1093 [PMID: [31949925](#) DOI: [10.21037/jgo.2019.09.01](#)]
- 7 **Gai B**, Zhang F. Chinese expert consensus on radioactive ¹²⁵I seeds interstitial implantation brachytherapy for pancreatic cancer. *J Cancer Res Ther* 2018; **14**: 1455-1462 [PMID: [30589023](#) DOI: [10.4103/jcr.JCRT_96_18](#)]
- 8 **Beyer DC**, Priestley JB Jr. Biochemical disease-free survival following 125I prostate implantation. *Int J Radiat Oncol Biol Phys* 1997; **37**: 559-563 [PMID: [9112453](#) DOI: [10.1016/s0360-3016\(96\)00609-8](#)]
- 9 **Xu W**, Liu Y, Lu Z, Jin ZD, Hu YH, Yu JG, Li ZS. A new endoscopic ultrasonography image processing method to evaluate the prognosis for pancreatic cancer treated with interstitial brachytherapy. *World J Gastroenterol* 2013; **19**: 6479-6484 [PMID: [24151368](#) DOI: [10.3748/wjg.v19.i38.6479](#)]
- 10 **Huang ZM**, Pan CC, Wu PH, Zhao M, Li W, Huang ZL, Yi RY. Efficacy of minimally invasive therapies on unresectable pancreatic cancer. *Chin J Cancer* 2013; **32**: 334-341 [PMID: [22958741](#) DOI: [10.5732/cjc.012.10093](#)]
- 11 **Du YQ**, Li ZS, Jin ZD. Endoscope-assisted brachytherapy for pancreatic cancer: From tumor killing to pain relief and drainage. *J Interv Gastroenterol* 2011; **1**: 23-27 [PMID: [21686109](#) DOI: [10.4161/jig.1.1.14596](#)]
- 12 **Du W**, Brekken RA. Does Axl have potential as a therapeutic target in pancreatic cancer? *Expert Opin Ther Targets* 2018; **22**: 955-966 [PMID: [30244621](#) DOI: [10.1080/14728222.2018.1527315](#)]
- 13 **Yamada M**, Sugiura T, Okamura Y, Ito T, Yamamoto Y, Ashida R, Sasaki K, Nagino M, Uesaka K. Microscopic Venous Invasion in Pancreatic Cancer. *Ann Surg Oncol* 2018; **25**: 1043-1051 [PMID: [29302820](#) DOI: [10.1245/s10434-017-6324-2](#)]
- 14 **Fujinaga H**, Sakai Y, Yamashita T, Arai K, Terashima T, Komura T, Seki A, Kawaguchi K, Nasti A, Yoshida K, Wada T, Yamamoto K, Kume K, Hasegawa T, Takata T, Honda M, Kaneko S. Biological characteristics of gene expression features in pancreatic cancer cells induced by proton and X-ray irradiation. *Int J Radiat Biol* 2019; **95**: 571-579 [PMID: [30557072](#) DOI: [10.1080/09553002.2019.1558297](#)]
- 15 **Zhang ZK**, Yang YM. [Current research status and progress in comprehensive diagnosis and treatment of pancreatic cancer in the era of targeted therapy]. *Zhonghua Wai Ke Za Zhi* 2020; **58**: 22-26 [PMID: [31902165](#) DOI: [10.3760/cma.j.issn.0529-5815.2020.01.006](#)]
- 16 **Li D**, Su D, Xue L, Liu Y, Pang W. Establishment of pancreatic cancer stem cells by flow cytometry and their biological characteristics. *Int J Clin Exp Pathol* 2015; **8**: 11218-11223 [PMID: [26617845](#)]
- 17 **Ghaly M**, Gogineni E, Saif MW. The Evolving Field of Stereotactic Body Radiation Therapy in Pancreatic Cancer. *Pancreas (Fairfax)* 2019; **3**: 9-14 [PMID: [31930185](#) DOI: [10.17140/POJ-3-110](#)]
- 18 **Nichols RC**, Rutenberg M. Optimizing neoadjuvant radiotherapy for resectable and borderline resectable pancreatic cancer using protons. *World J Gastrointest Surg* 2019; **11**: 303-307 [PMID: [31602289](#) DOI: [10.4240/wjgs.v11.i7.303](#)]
- 19 **Liu SF**, Lu J, Wang H, Han Y, Wang DF, Yang LL, Li ZX, Hu XK. Computed tomography-magnetic resonance imaging fusion-guided iodine-125 seed implantation for single malignant brain tumor: Feasibility and safety. *J Cancer Res Ther* 2019; **15**: 818-824 [PMID: [31436237](#) DOI: [10.4103/jcr.JCRT_70_19](#)]
- 20 **Song Z**, Ye J, Wang Y, Li Y, Wang W. Computed tomography-guided iodine-125 brachytherapy for unresectable hepatocellular carcinoma. *J Cancer Res Ther* 2019; **15**: 1553-1560 [PMID: [31939437](#) DOI: [10.4103/jcr.JCRT_629_19](#)]
- 21 **Kou F**, Gao S, Liu S, Wang X, Chen H, Zhu X, Guo J, Zhang X, Feng A, Liu B. Preliminary clinical efficacy of iodine-125 seed implantation for the treatment of advanced malignant lung tumors. *J*

- Cancer Res Ther* 2019; **15**: 1567-1573 [PMID: [31939439](#) DOI: [10.4103/jert.JCRT_581_19](#)]
- 22 **Lee JM**, Choi HS, Chun HJ, Kim ES, Keum B, Seo YS, Jeon YT, Lee HS, Um SH, Kim CD, Kim HB. EUS-guided irreversible electroporation using endoscopic needle-electrode in porcine pancreas. *Surg Endosc* 2019; **33**: 658-662 [PMID: [30374794](#) DOI: [10.1007/s00464-018-6425-4](#)]
- 23 **Hicks AM**, Chou J, Capanu M, Lowery MA, Yu KH, O'Reilly EM. Pancreas Adenocarcinoma: Ascites, Clinical Manifestations, and Management Implications. *Clin Colorectal Cancer* 2016; **15**: 360-368 [PMID: [27262896](#) DOI: [10.1016/j.clcc.2016.04.014](#)]



Published by **Baishideng Publishing Group Inc**
7041 Koll Center Parkway, Suite 160, Pleasanton, CA 94566, USA

Telephone: +1-925-3991568

E-mail: bpgoffice@wjgnet.com

Help Desk: <https://www.f6publishing.com/helpdesk>

<https://www.wjgnet.com>

