

# World Journal of *Meta-Analysis*

*World J Meta-Anal* 2022 June 28; 10(3): 74-194



**OPINION REVIEW**

- 74 Responses to disrupted operative care during the coronavirus pandemic at a Caribbean hospital  
*Cawich SO, Narayansingh G, Ramdass MJ, Mencia M, Thomas DA, Barrow S, Naraynsingh V*

**REVIEW**

- 81 Mechanism for development of malnutrition in primary biliary cholangitis  
*Reshetnyak VI, Maev IV*
- 99 Viral hepatitis: A narrative review of hepatitis A-E  
*Ahmed Z, Shetty A, Victor DW, Kodali S*

**MINIREVIEWS**

- 122 Rare post-endoscopic retrograde cholangiopancreatography complications: Can we avoid them?  
*Przybysz MA, Stankiewicz R*

**SYSTEMATIC REVIEWS**

- 130 Review with meta-analysis relating North American, European and Japanese snus or smokeless tobacco use to major smoking-related diseases  
*Lee PN, Coombs KJ, Hamling JS*

**META-ANALYSIS**

- 143 Evidence analysis on the utilization of platelet-rich plasma as an adjuvant in the repair of rotator cuff tears  
*Muthu S, Jeyaraman N, Patel K, Chellamuthu G, Viswanathan VK, Jeyaraman M, Khanna M*
- 162 Is cellular therapy beneficial in management of rotator cuff tears? Meta-analysis of comparative clinical studies  
*Muthu S, Mogulesh C, Viswanathan VK, Jeyaraman N, Pai SN, Jeyaraman M, Khanna M*
- 177 Clinical outcomes of the omicron variant compared with previous SARS-CoV-2 variants; meta-analysis of current reports  
*Karbalaei M, Keikha M*
- 186 Difference in incidence of developing hepatocellular carcinoma between hepatitis B virus-and hepatitis C virus-infected patients  
*Tarao K, Nozaki A, Komatsu H, Ideno N, Komatsu T, Ikeda T, Taguri M, Maeda S*

**ABOUT COVER**

Editorial Board Member of *World Journal of Meta-Analysis*, Juan Ren, MD, PhD, Professor, Department of Oncology and Radiotherapy, The First Affiliated Hospital of Xi'an Jiaotong University, Xi'an 710061, Shaanxi Province, China. 869491533@qq.com

**AIMS AND SCOPE**

The primary aim of *World Journal of Meta-Analysis* (WJMA, *World J Meta-Anal*) is to provide scholars and readers from various fields of clinical medicine with a platform to publish high-quality meta-analysis and systematic review articles and communicate their research findings online.

WJMA mainly publishes articles reporting research results and findings obtained through meta-analysis and systematic review in a wide range of areas, including medicine, pharmacy, preventive medicine, stomatology, nursing, medical imaging, and laboratory medicine.

**INDEXING/ABSTRACTING**

The WJMA is now abstracted and indexed in Reference Citation Analysis, China National Knowledge Infrastructure, China Science and Technology Journal Database, and Superstar Journals Database.

**RESPONSIBLE EDITORS FOR THIS ISSUE**

Production Editor: Hui-Ge Yu; Production Department Director: Xiang Li; Editorial Office Director: Jin-Lei Wang.

**NAME OF JOURNAL**

*World Journal of Meta-Analysis*

**ISSN**

ISSN 2308-3840 (online)

**LAUNCH DATE**

May 26, 2013

**FREQUENCY**

Bimonthly

**EDITORS-IN-CHIEF**

Saurabh Chandan, Jing Sun

**EDITORIAL BOARD MEMBERS**

<https://www.wjgnet.com/2308-3840/editorialboard.htm>

**PUBLICATION DATE**

June 28, 2022

**COPYRIGHT**

© 2022 Baishideng Publishing Group Inc

**INSTRUCTIONS TO AUTHORS**

<https://www.wjgnet.com/bpg/gerinfo/204>

**GUIDELINES FOR ETHICS DOCUMENTS**

<https://www.wjgnet.com/bpg/GerInfo/287>

**GUIDELINES FOR NON-NATIVE SPEAKERS OF ENGLISH**

<https://www.wjgnet.com/bpg/gerinfo/240>

**PUBLICATION ETHICS**

<https://www.wjgnet.com/bpg/GerInfo/288>

**PUBLICATION MISCONDUCT**

<https://www.wjgnet.com/bpg/gerinfo/208>

**ARTICLE PROCESSING CHARGE**

<https://www.wjgnet.com/bpg/gerinfo/242>

**STEPS FOR SUBMITTING MANUSCRIPTS**

<https://www.wjgnet.com/bpg/GerInfo/239>

**ONLINE SUBMISSION**

<https://www.f6publishing.com>

# Mechanism for development of malnutrition in primary biliary cholangitis

Vasiliy Ivanovich Reshetnyak, Igor Veniaminovich Maev

**Specialty type:** Gastroenterology and hepatology

**Provenance and peer review:**

Invited article; Externally peer reviewed.

**Peer-review model:** Single blind

**Peer-review report's scientific quality classification**

Grade A (Excellent): 0  
Grade B (Very good): 0  
Grade C (Good): C, C  
Grade D (Fair): 0  
Grade E (Poor): 0

**P-Reviewer:** Feng B, China; Filipec Kanizaj T, Croatia

**Received:** February 13, 2022

**Peer-review started:** February 13, 2022

**First decision:** April 13, 2022

**Revised:** April 14, 2022

**Accepted:** May 22, 2022

**Article in press:** May 22, 2022

**Published online:** June 28, 2022



**Vasiliy Ivanovich Reshetnyak, Igor Veniaminovich Maev**, Department of Propaedeutic of Internal Diseases and Gastroenterology, A.I. Yevdokimov Moscow State University of Medicine and Dentistry, Moscow 127473, Russia

**Corresponding author:** Vasiliy Ivanovich Reshetnyak, MD, MDS, PhD, Full Professor, Department of Propaedeutic of Internal Diseases and Gastroenterology, A.I. Yevdokimov Moscow State University of Medicine and Dentistry, 20, Delegatskaya St., Build. 1, Moscow 127473, Russia. [vasiliy.reshetnyak@yandex.ru](mailto:vasiliy.reshetnyak@yandex.ru)

## Abstract

Primary biliary cholangitis (PBC) is a chronic cholestatic liver disease that is associated with impaired biliary excretion processes. Along with the development of cholestasis, there is a deficient flow of bile acids into the intestinal lumen causing malnutrition (MN) that is manifested in deficiencies of both macro- and micronutrients. The mechanism for development of trophological insufficiency is multifactorial. However, the trigger of MN in PBC is impaired enterohepatic circulation of bile acids. The ingress of bile acids with a detergent effect into the general bloodstream, followed by elimination *via* the kidneys and skin, triggers a cascade of metabolic disturbances, which leads to the gradual development and progression of calorie MN. The latter gradually transforms into protein-calorie MN (PCM) (as marasmus) due to the insufficient entry of bile acids into the duodenum, which is accompanied by a decrease in the emulsification, hydrolysis, and absorption of fats and fat-soluble vitamins, as well as disturbance of intestinal motility and bacterial overgrowth. Fat-soluble vitamin deficiencies complement PBC with vitamin and mineral MN. The development of hepatocellular failure enhances the progression of PCM due to the impaired protein synthetic function of hepatocytes in the advanced stage of PBC, which results in deficiency of not only the somatic but also the visceral pool of proteins. A mixed PCM form of marasmus and kwashiorkor develops. Early recognition of energy, protein, micronutrient, and macronutrient deficiencies is of great importance because timely nutritional support can improve liver function and quality of life in patients with PBC. In this case, it is important to know what type (energy, protein-calorie, vitamin, and vitamin-mineral) and form (marasmus, marasmus-kwashiorkor) of MN is present in the patient and how it is associated with the stage of the disease. Therefore, it is recommended to screen all patients with PBC for MN, from the early asymptomatic stage of the disease in order to identify and avoid preventable complications, such as fatigue, malaise, performance decrement, sarcopenia, osteoporosis, and hepatic encephalopathy, which will be

able to provide appropriate nutritional support for correction of the trophological status.

**Key Words:** Primary biliary cholangitis; Malnutrition; Calorie; Protein-calorie; Vitamin-mineral malnutrition; Marasmus and marasmus-kwashiorkor malnutrition

©The Author(s) 2022. Published by Baishideng Publishing Group Inc. All rights reserved.

**Core Tip:** The review discusses the development of malnutrition in primary biliary cholangitis. It presents the factors contributing to the gradual progression of signs of malnutrition in these patients in different stages of the disease and considers the pathogenesis of energy, protein-calorie (marasmus), and protein (kwashiorkor) malnutrition as the disease progresses. By taking into account the mechanisms of different malnutrition signs and forms, the authors present the principles of diet therapy for primary biliary cholangitis.

**Citation:** Reshetnyak VI, Maev IV. Mechanism for development of malnutrition in primary biliary cholangitis. *World J Meta-Anal* 2022; 10(3): 81-98

**URL:** <https://www.wjgnet.com/2308-3840/full/v10/i3/81.htm>

**DOI:** <https://dx.doi.org/10.13105/wjma.v10.i3.81>

## INTRODUCTION

Malnutrition (MN) is common in patients with primary biliary cholangitis (PBC). MN accompanying this disease worsens its course, prognosis, and quality of life in a patient, negatively affects the outcome of the disease, and is most often recognized only in its later stages[1]. The etiology and pathophysiology of MN are multifactorial in PBC[2]. Impaired biliary excretion processes in PBC, which are accompanied by cholestasis and decreased hepatocyte function, affect the metabolism of both macronutrients and micronutrients and depends on the stage of the disease. For the timely diagnosis and correction of the abnormal trophological status, it is important to understand when, at what stage of the disease, and by what mechanisms, calorie, protein, vitamin, and mineral MN develop in PBC patients. To improve treatment results in patients with PBC, it is necessary to pay attention to the development of MN in them and to its prevention and treatment even in the early stages of the disease. The advanced, end-stages of PBC are accompanied by an imbalance between catabolism and anabolism, with the predominance of the former over the latter. The goals of nutritional therapy for patients with cholestatic liver disease are improvement of anabolic processes for valuable liver regeneration, prevention, and correction of malnutrition as well as to avoid and/or treat related complications of liver disease. It is very important to focus not only on the specific signs of the disease but also on the assessment of the nutritional status in patients during their initial examination. At the same time, the features and mechanisms of metabolic disorders should be taken into account in different stages of PBC in order to timely recognize MN and its correction during basic treatment, taking into account currently known scientific data.

## DEFINITION OF MALNUTRITION

The Russian literature lacks the generally accepted term to define the nutritional status[3]. MN (synonyms: Protein-calorie, nutritional insufficiency, trophological insufficiency, malnutrition) is a pathological condition caused by a discrepancy between the intake and consumption (imbalance) of organic nutrients, calories, macronutrients, and micronutrients, leading to weight loss, a measurable negative change in the component composition of the body, which is accompanied by its dysfunction and a poorer clinical outcome[4,5]. MN is defined by the World Health Organization as the result of insufficient intake or absorption of nutrients needed to support growth and to prevent chronic or acute diseases and is often characterized by growth retardation, wasting, being underweight, and micronutrient deficiencies[6]. MN is accompanied by weight loss, lower physical performance, and worse health and causes serious metabolic disorders, immunosuppression, and endocrine dysfunctions[7,8].



## PREVALENCE OF MALNUTRITION IN PATIENTS WITH LIVER DISEASE

It is very difficult to estimate the true prevalence of MN for the following reasons[5]: Physicians' extremely low attention to the trophological status; difficulties in assessing MN; and the masking of muscle tissue loss in the presence of excess fat mass and fluid retention.

About 2 billion people in the world experience various types of MN[9]. Secondary (endogenous) MN is noted in patients with various diseases. Studies indicate that MN is observed in 20%-80% of patients with liver disease, according to the clinical stage of the disease[10]. Almost any chronic illness can cause progressive weight loss. A study by Carvalho and Parise[11] has shown that as many as 75% of patients with chronic liver disease have varying degrees of MN. Hyponutrition and sarcopenia are common in patients with chronic liver disease and are associated with an increased risk for decompensation and infections as well as are frequently an independent risk factor for death in these patients and worse treatment outcomes after liver transplantation[2,12]. It is important to note that the incidence of trophological insufficiency increases in these patients as the disease progresses. In the 1990s studies[13,14], evaluation of the nutritional status in patients with different etiologies of liver cirrhosis and with various degrees of liver failure came to the consensus that MN was recognized in all types of cirrhosis[15] and, according to various authors, it ranged from 40% to 100%[16-19]. There is a high prevalence of MN in individuals with decompensated liver cirrhosis. The prevalence of MN is 46% in patients classified as Child-Pugh A cirrhosis and 84% and 95% in those classified as Child-Pugh B and C, respectively[11]. MN cases can be as much as 100% in patients on the waiting list for liver transplantation[20,21].

## PBC AND MALNUTRITION

MN develops in PBC patients with and without established cirrhosis[22,23]. According to Wicks *et al* [22], MN is detected in 33% of patients with different stages of PBC. Primary biliary cholangitis (PBC; ICD-10 K.74.3; ICD-11 (beta draft) DB37.2) is a disease, formerly (until 2015) known as primary biliary cirrhosis (PBC)[24], is the chronic, progressive autoimmune cholestatic liver disease proceeding with epithelial destruction, necrosis, and apoptosis, mainly affecting the intralobular and septal bile ducts, which eventually leads to liver cirrhosis[25,26]. PBC is characterized by T-cell-mediated destruction of epithelial cells that line the small intrahepatic bile ducts[27]. This leads to ductulopenia and persistent cholestasis to develop end-stage cirrhosis with hepatocellular failure[26].

Early-stage disease may be asymptomatic or have nonspecific symptoms, such as weakness, fatigue, reduced performance, anorexia/hyporexia, and malaise, which can be easily confused with other conditions. During this period, MN caused by the disease itself is generally invisible since there are no significant damage to the liver cells involved in metabolic processes. In early-stage PBC, there is a slight decrease in energy consumption, which does not lead to clinically pronounced protein-calorie MN, but there is already a potentially modifiable MN during this period[28-30].

As cholestasis progresses, excess bile acids have a chronic (continuous) aggressive effect on the liver parenchyma, which is manifested by the development of gradually progressing hepatocellular failure. The trophological status of patients with PBC also decreases as the disease progresses, which is partly due to a significant decrease in energy consumption[22]. Patients with advanced PBC develop liver cirrhosis that may be accompanied by ascites, portal hypertension, esophageal/gastric variceal hemorrhage, and hepatic encephalopathy[31]. Portal hypertension can develop in patients with cholestatic liver disease before cirrhosis is established[32,33]. There is almost a direct relationship between the severity of liver disease and the degree of MN[30]. In this case, the state of nutrition is disturbed secondarily to the symptoms of the disease[33]. Severe protein-calorie MN more frequently develops and is observed in advanced and end stages of PBC, generally in patients who have been suffering from this disease for more than one decade[29] and when there is a 25% or less decline in the total number of functioning hepatocytes[34]. Trophological insufficiency becomes more easily detectable when the patients with PBC develop severe cirrhosis with ascites.

## THE PATHOGENESIS OF MALNUTRITION IN PBC

The causes and mechanisms leading to MN and weight loss in patients with PBC are multifactorial and can be divided into three groups: insufficient intake of nutrients; abnormalities in digestion and absorption (maldigestion and malabsorption syndromes); and increased metabolic rate (accelerated catabolism).

### *Insufficient intake of nutrients in patients with PBC*

In early-stage PBC, the trophological changes are associated with elevated plasma bile acid levels in these patients, which gives rise to an early and, most commonly, the only for several months or even

years pathognomonic symptom of the disease, such as local or diffuse (extension), moderate or pronounced (degree), and persistent or transient (duration) skin itching[26,35]. The cause of skin itching is the epidermal deposition of bile acids that are abundant in the blood of patients with PBC even in the asymptomatic and early stages of the disease, long before developing jaundice. In this case, all fractions of conjugated bile acids increase in the blood.

In response to excess plasma bile acids in PBC patients, whose body tries to remove toxic bile acids having detergent properties from the general circulation through the kidneys and skin. In this case, 50%-85% of bile acids that are unconjugated with glycine or taurine are detected in the skin, and less than 20% of bile acids are found as sulfoesters[25,26,36]. Itching is more marked at night and frequently enhanced in contact with tissues as well as in warmth. Itching is not relieved by symptomatic (anti-histamine, sedative) medications; it often causes excruciating insomnia, emotional changes, anxiety, and depression[24]. All this leads to decreased appetite and insufficient intake of food ingredients, which is accompanied by an increase in glycogenolysis and by a reduction in glycogenogenesis.

Glycogenolysis, a biochemical process of breaking down glycogen into glucose, occurs primarily in the liver and muscles. The main purpose of glycogenolysis is to keep blood glucose levels stable to provide the body with energy. Due to its glycogen stores and glycogenolysis processes, the liver provides up to 75% of the body's need for glucose as the primary substrate quickly used to replenish energy.

Glycogenogenesis is a metabolic pathway that synthesizes glycogen from glucose. This process takes place in all tissues; however, it occurs mainly in the liver and muscles. The starting point for glycogenogenesis is glucose-6-phosphate that can be obtained from glucose in the reaction catalyzed by glucokinase in the liver and by hexokinase in the muscles. Liver glycogen is known to be used as an energy material by all tissues and organs. At the same time, glycogen in muscles is employed by them as an energy material exclusively for their own needs.

Green *et al*[37] indicated that even in the early stages of PBC, glycogen stores gradually reduce in the liver, which is associated with an increase in glycogenolysis and a decrease in glycogenogenesis. The authors have convincingly shown that glucokinase activity in PBC patients reduces significantly (down to zero), which suggests that liver glycogen production decreases[37]. At the same time, hexokinase (performs phosphorylation of hexoses) that is responsible for glycogen synthesis mainly in the muscles significantly increases during this period in PBC patients *vs* healthy individuals[37]. At the same time, hexokinase (that produces phosphorylation of hexoses), which is responsible for glycogen synthesis mainly in the muscles, significantly increases during this period in PBC patients *vs* healthy individuals [37].

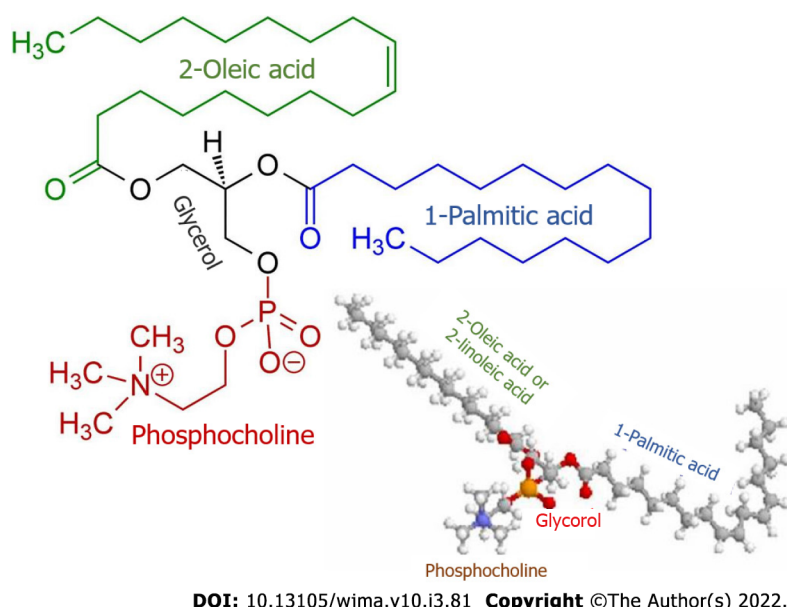
Excruciating insomnia, emotional changes, anxiety, and depression, which develop even in the early stages of the disease, contribute to a decline in glycogen stores and to gradually progressing energy deficiency (a reduction in the level of glucose used as an energy substrate) with the clinical manifestations of obvious weakness, rapid fatigue, and decreases in performance, functional status, and quality of life in PBC patients[24,33,35,38-40]. Moreover, the asthenic syndrome in patients with PBC is more pronounced than in those with other chronic liver diseases[24]. There is evidence that an important role in the mechanism of fatigue development is played by aromatic amino acids, such as tyrosine, phenylalanine, and tryptophan, which are abundant in the blood of patients with PBC[39,41,42].

And so, in early-stage PBC, an imperceptible trophological change occurs as calorie MN that manifests itself only as general weakness and/or reduced working capacity for a fairly long time[40,43,44].

The developing impairment of biliary excretion processes (accumulation of blood bile acid) in patients with PBC even in the asymptomatic and early stages of the disease contributes to the development of calorie MN, which requires that higher-calorie foods be included in the diet of these patients.

Even slight nutrient deficiencies accompanied by a gradual increase in glycogenolysis and a decrease in glycogenogenesis leads to the inclusion of compensation mechanisms. The latter are intended to protect higher energy-consuming vital organs (the brain, myocardium, erythrocytes, *etc.*) from energy deficiency by redistributing plastic and energy resources[5]. This brings about the mobilization of energy resources of adipose tissue and the consumption of fatty acids as an energy material. Fatty acids become important substrates for energy production. Due to the acceleration of fatty acid  $\beta$ -oxidation processes, there is a progressive decline in fat stores in patients with PBC[45,46]. The activation of these processes occurs as cholestasis progresses.

Along with this, patients with PBC are observed to have elevated levels of palmitic and oleic fatty acids[37]. The latter are the main components of biliary phospholipids (Figure 1) that are involved in the formation of micellar and lamellar structures consisting of phospholipids, cholesterol, and bile acids [47]. In patients with PBC, the plasma levels of palmitic and oleic acids as well as phospholipids and cholesterol increase even in the early stages of the disease and are aimed at neutralizing the detergent effect of excess bile acids entering the general circulation as cholestasis progresses[26,32]. In PBC patients, cholesterol, phospholipids, and palmitic and oleic acids can enter the general circulation due to an increase in their synthesis in the liver and to the entry of bile components into the blood as a consequence of progressive cholestasis.



**Figure 1** Chemical structure of phosphatidylcholine containing palmitic and oleic fatty acids.

The higher synthesis of phospholipids requires an increased amount of not only palmitic and oleic fatty acids but also orthophosphate. In this connection, even in the early stages of the disease, the plasma of patients with PBC displays the moderately enhanced activity of the hepatic fraction of alkaline phosphatase and 5'-nucleotidase, which indicates changes in phosphorus metabolism[26]. These enzymes are involved in the hydrolysis of phosphomonoesters to yield orthophosphate that is essential as the main component for the biosynthesis of phospholipids that in turn are required to neutralize the increased content of plasma bile acid levels in patients with PBC.

In patients with PBC, the long-term elevated plasma levels of cholesterol in response to the increase in its synthesis in the liver can give rise to xanthelasmas, single or multiple, pale-yellow formations that are slightly raised above the skin. In these patients, the increased levels of cholesterol as well as those of phospholipids are aimed at neutralizing the detergent effect of bile acids entering the general circulation. At the same time, despite the increase in their total plasma cholesterol, the patients with PBC were found to have mild hepatic steatosis and a low risk for atherosclerosis and cardiovascular events[48].

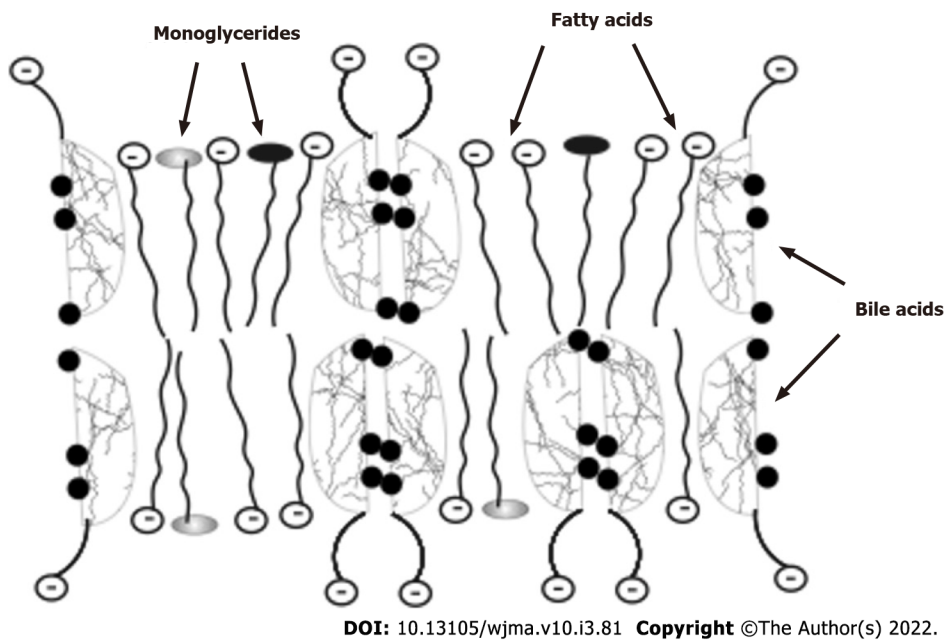
The developing impairment of biliary excretion processes (accumulation of blood bile acids) in patients with PBC even in its early stages causes fat metabolic changes that are aimed at compensating for energy deficit (accelerated fatty acid  $\beta$ -oxidation) and at neutralizing the detergent effect of excess bile acids (the increased synthesis of phospholipids and cholesterol). Therefore, standard foods are generally well tolerated by PBC patients who do not require a low-cholesterol diet in the early stages of the disease. Their diets can include foods that are high in phosphorus to maintain sufficient synthesis of phospholipids. Low-fat diets to reduce xanthelasmas have been recognized to be unsuccessful and even harmful[49].

### **Abnormalities in digestion and absorption (maldigestion and malabsorption syndromes)**

Intrahepatic cholestasis in PBC is a multifactorial process that is associated with damage to subcellular structures in the epithelial cells of the intrahepatic bile ducts and with changes in bile acid metabolism due to impaired bile excretion. Insufficient entry of bile acids into the intestinal lumen in patients with PBC tends to decrease the rate of fat hydrolysis processes and to inadequately absorb fats and fat-soluble vitamins (A, D, E, and K) in the small intestine. This contributes to the progression of MN due to steatorrhea (fecal excretion of more than 7 g of fat per day) and to the gradual development of vitamin and mineral deficiencies[25,26]. The severity of steatorrhea correlates with lower bile acid production and concentrations ( $r = 0.82$ ;  $P < 0.0001$ ), elevated serum bilirubin levels ( $r = 0.88$ ;  $P < 0.001$ ), and late histological stages of PBC ( $P < 0.005$ )[50]. All patients with serum total bilirubin levels greater than 4.5 mg/dL have severe steatorrhea (the fecal fat excretion is greater than 25 g/d)[26,50].

The mechanism of steatorrhea development is associated with insufficient fat emulsification owing to the reduced ingress of bile acids into the intestinal lumen[51]. In this case, the processes of fat hydrolysis by pancreatic lipases are not disrupted. The results obtained by Ros *et al*[52] showed that pancreatic function was generally preserved and does not cause steatorrhea in PBC. In patients with PBC, the serum activity of alkaline phosphatase does not correlate with the severity of steatorrhea, and the pancreatic amylase is in the normal range[52]. Fat emulsification is required to increase the area of contact of the substrate with lipase enzymes. A decrease in the processes of fat emulsification leads to





**Figure 2** Schematic diagram of the composition of lipid-bile acids complexes formed in the small bowel.

the lower rate of hydrolysis of fats, which results in their incomplete digestion, when moving along the intestine, and contributes to the gradual development of steatorrhea.

In addition to the emulsification of fats, bile acids are involved in the absorption of hydrolyzed fats and fat-soluble vitamins. Fatty acids and monoglycerides, which are formed from neutral fats and phospholipids, with the participation of bile acids and under the action of lipases are absorbed by enterocytes as an emulsion of lipid-bile acid complexes in the upper small intestine (Figure 2). Being potent detergents, bile acids form micellar or lamellar structures with fatty acids and monoglycerides for absorption by enterocytes[25,26]. The complexes disintegrate inside the enterocytes. Fatty acids with monoglycerides remain in the enterocytes (used by a cell as a building, energetic material or packed into chylomicrons), while bile acids come back into the intestinal lumen and take part in the emulsification of fats and in the formation of new lipid-bile acids complexes for delivery of fatty acids, monoglycerides, and fat-soluble vitamins to the enterocytes. While moving through the small intestine, bile acids are able to participate 4-6 times in the delivery of fatty acids and monoglycerides into the enterocytes [53]. Thus, insufficient amounts of bile acids in PBC interfere with the absorption of fats and fat-soluble vitamins.

Intestinal bile acid deficiency not only impairs fat emulsification and the decreased absorption of fatty acids, monoglycerides, and fat-soluble vitamins, in patients with PBC[52] but also leads to intestinal microbiome dysbiosis[54]. DiBaise *et al*[55] suggested that dysbiosis also plays a significant role in the development of steatorrhea in patients with PBC and that bacterial overgrowth should be obligatorily assessed in these patients.

Since the insufficient entry of bile acids into the intestine is one of the first signs of the disease, even in its early stages, patients with PBC can be found to have fecal matter of incompletely digested fats, one of the signs of steatorrhea. As the disease progresses and steatorrhea develops, most patients have semi-liquid stools up to diarrhea of varying severity. With this, some patients with PBC are observed to have constipation. The latter can be attributed to a certain change in the gut microbiome and an insufficient effect of a small amount of bile acids on intestinal motility.

Steatorrhea in the presence of gradually and imperceptibly developing calorie MN leads to the development of slowly progressive weight loss in patients with PBC. Mid-arm circumference, triceps skinfold thickness, and dual energy X-ray absorptiometry-estimated % fat decreased significantly with disease progression ( $P < 0.001$ ) and especially when liver cirrhosis with ascites is established[22].

The development of slowly progressive weight loss can be facilitated by the use of certain drugs. Thus, cholestyramine used to relieve itching can cause abdominal distention, constipation, or diarrhea, which suppresses, restricts, and disrupts food intake, resulting in inadequate intake of food ingredients and in higher energy deficiency[32].

The developing impairment of biliary excretion processes (insufficient flow of bile acids into the duodenum) in patients with PBC even in its early stages contributes to the development of slowly progressive weight loss, which requires the prescription of ursodeoxycholic acid preparations and the incorporation of high-calorie foods for their diets. Since these patients eat less during meals due to early satiety, it is possible to recommend smaller, more frequent higher-calorie meals[28,29]. At the same time, fats should not be restricted in their eating patterns. Edible fats should be restricted only if the

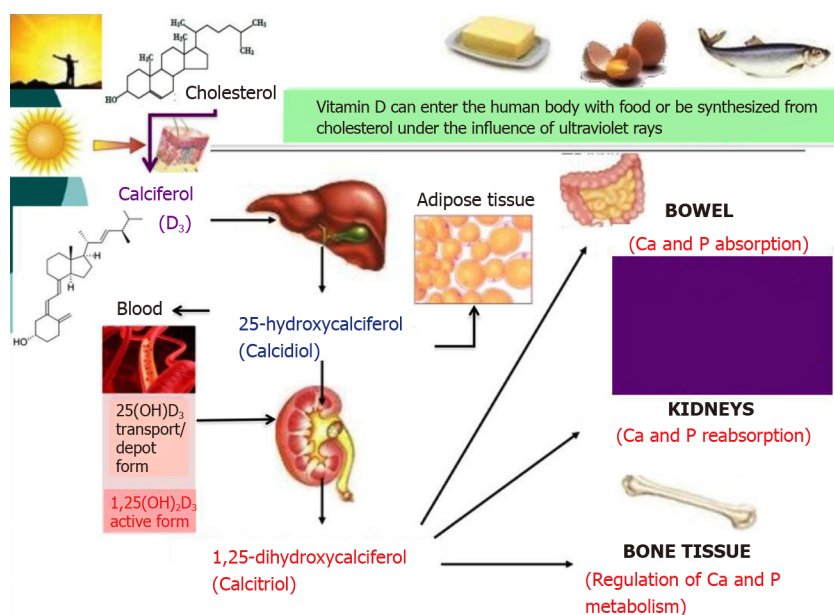


Figure 3 Metabolism of vitamin D and its involvement in the metabolism of phosphorus and calcium.

patients have obvious steatorrhea or severe nausea or symptoms of indigestion when consuming fats. However, it should be borne in mind that foods that have no or low fat and/or triglycerides containing the average fatty acid chain length are generally better tolerated. Therefore, it is important to individually assess the patients' tolerances to different fats and to make appropriate recommendations.

**Vitamin and mineral deficiencies:** Bile acids play an important role in absorbing the fat-soluble vitamins A, D, E, and K from the intestines. Bile acids can include fat-soluble vitamins in the lipoid-bile acid complexes and thus transport them into the enterocyte. Insufficient entry of bile acids in the intestine in PBC leads to a decrease in the absorption of fat-soluble vitamins and to the development of vitamin deficiencies[56]. Deficiency of vitamins A, D, E, and K was identified in 33.5%, 13.2%, 1.9%, and 7.8% of PBC patients, respectively[56].

Despite the fact that insufficient ingress of bile acids in PBC occurs even in its early stages, fat-soluble vitamin deficiencies are more frequently manifested at the stage of frank cholestasis with pronounced signs of the disease or in the stage of cirrhosis development. The ability of fat-soluble vitamins to accumulate in significant quantities and to be stored in the liver and adipocytes as well as that of some of them to be synthesized in the body cause fat-soluble vitamin deficiencies to generally not develop in early-stage PBC. Thus, vitamin D is synthesized in the skin from cholesterol upon exposure to ultraviolet rays, whereas vitamin K is synthesized by the intestinal microflora. But as the disease progresses and hepatocellular failure develops, there is deficiency of these fat-soluble vitamins since they are metabolized in the liver.

Vitamin D takes an active part in phosphorus and calcium metabolism. Dietary (edible) vitamin D and vitamin D<sub>3</sub> (calciferol) that is newly synthesized by ultraviolet radiation from cholesterol are inactive forms of this vitamin. In the liver, it is hydroxylated to 25-hydroxycalciferol (calcidiol) that can accumulate and be stored in the liver and adipose tissue. The serum concentration of 25-hydroxycalciferol is considered the most reliable indicator of the total metabolism of vitamin D; therefore, this indicator can be used to determine the body's supply of this vitamin[25,26]. When blood calcium decreases, there is an increase in the synthesis of parathyroid hormone that stimulates the renal hydroxylation of calcidiol to 1,25-dihydroxycalciferol (calcitriol), the active form of vitamin D, which is also involved in the regulation of metabolism of calcium and phosphorus: it increases their absorption in the intestine, their reabsorption in the renal tubules, and regulates the exchange of calcium and phosphorus in the bones (Figure 3).

In PBC, as hepatocellular failure develops, there is a gradually progressive deficiency of calcidiol, precursor of the active vitamin D, leading to osteodystrophy accompanied by osteopenia. The latter is a recognized complication of cholestatic liver disease with a prevalence of 10% to 56% depending on the stage of the disease[57]. PBC is a condition that causes osteopenia more often than other chronic liver diseases[58-61], as clinically manifested by the development of signs of osteoporosis[62].

**Osteoporosis:** Osteoporosis is a systemic skeletal disease characterized by low bone mass and bone tissue microarchitectural deterioration, thus resulting in increased bone fragility and a higher risk for unmotivated fractures[63-65]. The prevalence of osteoporosis among patients with PBC ranges from

20% to 37% or more, which is higher than that in the general population (10%-11%)[59-61,66]. According to Lindor *et al*[32], the incidence of osteoporosis in PBC is 30%. Osteoporosis increases with liver disease progression[67].

The molecular mechanisms of osteoporosis in patients with PBC are associated with the impaired enterohepatic bile acid circulation, followed by the decreased concentration of bile acids in the small bowel and by malabsorption of fat-soluble vitamin D[68]. In PBC patients with severe cholestasis along with developed intestinal malabsorption of dietary vitamin D, calciferol is slowly converted to calcidiol in the liver as hepatic cell failure progresses[69] and due to those monooxygenases are competitively inhibited[70]. In these patients, the lower amount of calcidiol causes a decrease in the renal production of the active form of vitamin D, calcitriol. This results in an impairment of phosphorus and calcium metabolism, which gives rise to osteodystrophy[58,71,72] that can manifest itself as bone pain even in the early stages of PBC. The development of bone densitometry could estimate bone mass and assess the risk of fractures[58], which correlated with bone mineral density[64]. In this case, laboratory tests yield important information about the metabolic status of the bone. The serum level of calcium and phosphorus is usually slightly reduced in patients with PBC[58]. In Sherlock's[51] opinion, impaired phosphorus and calcium metabolism in PBC patients is facilitated by steatorrhea; increased intestinal fat content can form insoluble soaps with calcium, preventing its further absorption by enterocytes. Reduced calcium absorption correlates well with increased fecal fat excretion and to a lesser extent with the severity of jaundice[73]. Genetic factors also play a role in the development of osteoporosis[74-76]. Bone X-ray and densitometry and morphological examination of a bone tissue biopsy specimen from a patient with PBC most commonly reveal the signs of osteoporosis[58]. In the later stages of the disease, there are pathological fractures of the vertebrae and ribs, less frequently those of pelvic bones and long bones[66].

In patients with PBC, long-term steroid therapy that accelerates and aggravates the development of osteoporosis can lead to clinically significant bone loss with a more than 2-fold increase in the risk of fractures[77]. A traumatic fractures are especially dangerous in PBC patients who have undergone orthotopic liver transplantation and are treated with high-dose corticosteroids[62].

Glucocorticosteroids decrease the intestinal absorption of calcium by lowering the production of calcitriol (1,25-dihydroxyvitamin D<sub>3</sub>), by suppressing the tubular reabsorption of calcium in the kidneys, and by increasing its urinary excretion. A decrease in blood calcium levels leads to a compensatory increase in parathyroid hormone production and bone resorption. In addition, glucocorticosteroids directly increase the release of parathyroid hormone and suppress the function of osteoblasts by enhancing the activity of osteoclasts and indirectly inhibiting the formation of bone tissue, by suppressing the synthesis of testosterone in the gonads, and by reducing the generation of growth hormone, insulin-like growth factor 1 that is synthesized by the liver and stimulates bone collagen type 1 synthesis and osteoblastic function[58,78,79].

Thus, the pathogenesis of osteoporosis in patients with PBC is complex and multifactorial[58,62,80] and involves impaired vitamin D and K absorption and metabolism[81], magnesium ion deficiency, decreased intestinal absorption of calcium and its reabsorption in the renal tubules, increased bone resorption[82,83], elevated levels of bilirubin that inhibits osteoblast function[58,66,84], genetic predisposition[85], and adverse reactions of drugs, such as corticosteroids and cholestyramine, which are used to treat patients with PBC[86]. The development of osteoporosis is associated with the severity of the disease rather than its duration. Osteoporosis can affect quality of life and the course of the disease[58]. Deficiency of the active form of vitamin D (calcitriol) is a risk factor for osteosarcopenia[66,87].

**Vitamin K:** Vitamin K is required for the synthesis of coagulation factors VII, IX, and X and prothrombin in the liver[88-90]. During the early stages of PBC, vitamin K deficiency is generally absent. As malabsorption and impaired liver protein synthesis progress in late-stage PBC, there is a threat of reduced clotting factor synthesis[91]. Patients with PBC show lower plasma vitamin K levels in 23% of cases, which is usually accompanied by an increase in prothrombin time[92]. In patients with PBC in its end stage, portal hypertension, esophageal/gastric varices, and vitamin K deficiency increases the likelihood of massive bleeding that is difficult to stop.

**Vitamin A:** Vitamin A absorption requires an intact enterohepatic circulation of bile acids and formation of lipid-bile acid micellar and lamellar structures in the intestine. Significant malabsorption progression in patients with PBC, especially in those with severe cholestasis, can cause decreased intestinal vitamin A absorption accompanied by a reduction in serum retinol levels. In hepatocellular failure, the synthesis of hepatic retinol-binding protein is impaired, which also contributes to lower serum vitamin A concentrations[29]. Clinically, vitamin A deficiency is uncommon in patients with PBC. Just the same, patients with severe PBC sometimes develop insufficient dark adaptation (nyctalopia, night blindness, hemeralopia)[29]. There may be other potential manifestations of vitamin A deficiency, such as dry skin, elastosis, dermatological disorders, and impaired humoral and cell-mediated immunity[29].

The developing impairment of biliary excretion processes (insufficient flow of bile acids into the duodenum) in patients with PBC in the stage of obvious cholestasis and hepatocellular failure contributes to the gradual development of fat-soluble vitamin deficiencies, which requires the use of

ursodeoxycholic acid preparations, the control of plasma fat-soluble vitamin levels, and the dietary intake of foods fortified with appropriate vitamins if the latter are low. If there is deficiency of vitamin D, its active form (calcitriol) is given in combination with calcium supplements and bisphosphonates.

**Changes in copper metabolism:** The liver is known to play an important role in the metabolism of copper due to the hepatocyte production of ceruloplasmin-copper complexes and its excretion in bile. In health, about 80% of the copper entering the body is excreted in bile and feces.

In late-stage PBC, in which hepatocellular failure develops, copper accumulates in the liver, sometimes up to a level of 25 mg per 100 g of dry weight of liver tissue (the normal value of up to 6 mg per 100 g)[93]. At the same time, due to binding to ceruloplasmin, there are no clinical signs of copper that is toxic to humans nor is the Kayser-Fleischer ring detected.

The accumulation of copper in the body of patients with PBC leads to the activation of the copper-containing enzyme tyrosinase. As a result, the production of melanin increases, which causes skin hyperpigmentation in these patients. With this, the body tries to excrete excess copper not only through the kidneys but also through the skin. This results in copper deposition in the epidermis.

The developing impairment of biliary excretion processes (accumulation of bile acids in hepatocytes) in patients with PBC in the stage of obvious hepatocellular failure is accompanied by abnormal copper metabolism, which requires that foods containing more than 0.5 mg of copper per 100 g of the product should be carefully incorporated into a diet, and copper utensils should not be used for cooking and storing food.

### **Increased metabolic rate (accelerated catabolism)**

As calorie malnutrition and steatorrhea develop in PBC patients, their adaptive response leads to an increased demand of the internal organs for oxygen, which is accompanied by activation of catabolic processes, by mobilization of energy resources of adipose tissue, and by consumption of muscle protein as an energy material along with the active use of carbohydrates[54].

As glycogen stores are depleted in patients with PBC, the requirements by glucose-dependent tissues for glucose are compensated by the activation of gluconeogenesis. The latter serves as an important source for maintaining the normal glucose levels in the body and is a metabolic pathway that results in the generation of glucose from noncarbohydrate compounds. The process takes place mainly in the liver and less intensively in the renal cortex as well as in the intestinal mucosa[94]. The important precursors of glucose in gluconeogenesis are three-carbon compounds, such as lactate, pyruvate, and glycerol, which are generated by fat hydrolysis in adipocytes as well as amino acids hydrolysis of somatic (muscle) proteins. The metabolism of aromatic amino acids is known to occur predominantly in the liver, while that of branched-chain amino acids happens mainly in the muscles[43]. Patients with PBC display decreased serum concentrations of branched-chain amino acids and the increased serum level of aromatic amino acids[95-97]. In PBC patients, the increase in plasma aromatic amino acids correlates with the progression of hepatocellular failure and serves as one of its degree markers.

Unlike carbohydrates and fats, proteins and amino acids have a limited ability to be stored in the human body[94]. Amino acids are generally either used by the body as a plastic material or undergo metabolic degradation[94]. The nitrogen contained in amino acids during their degradation is converted into urea and creatinine and is excreted by the kidneys, whereas the carbon skeleton can be used for the biosynthesis of glucose (gluconeogenesis) or fatty acids or be oxidized to carbon dioxide and water to produce energy, *inter alia*, as ATP.

Muscles play an important role in the metabolism of amino acids, including through gluconeogenesis. Amino acids present in muscle proteins are an important source of glucose formation and metabolic energy production[94]. Glycogen and glucose deficiencies in patients with PBC enhances the catabolism of muscle (somatic) proteins to release free amino acids, many of which (primarily branched-chain amino acids) are immediately converted into pyruvate or first into oxaloacetate and then into pyruvate. The latter is converted to alanine, acquiring an amino group from other amino acids. Alanine from muscles is transported by blood to the liver, where it can be converted back into pyruvate that is used as an energy substrate or is involved in gluconeogenesis[94]. In patients with PBC, increased gluconeogenesis gradually leads to the massive breakdown and deficiency of muscle protein.

The balance between somatic protein synthesis and degradation is disturbed, which leads to the development of muscle atrophy (sarcopenia). Sarcopenia is characterized by loss of skeletal muscle mass and strength, and it is classified as secondary sarcopenia in PBC[66]. Fülster *et al*[98] showed that skeletal muscle atrophy that develops in chronic diseases is also associated with low exercise tolerance. The exact mechanism contributing to sarcopenia in PBC is not clearly defined. Increased branched-chain amino acid breakdown, muscle autophagy, corticosteroids, hyperammonemia, myostatin, and physical inactivity are considered as potential contributors to sarcopenia[99,100]. The lack of amino acids and energy activates autophagy, a process in which the cell components are degraded by lysosomal enzymes. In PBC, hepatic glycogen loss, followed by accelerated gluconeogenesis, increased branched-chain amino acid catabolism, and glucocorticoid intake can result in muscle autophagy and represent an important mechanism of muscle wasting in these patients[101]. Secondary sarcopenia caused by PBC worsens quality of life and prognosis in these patients[102-104].



Osteoporosis and sarcopenia are closely related to each other and frequently coexist in patients with chronic liver diseases[105,106]. The new term “osteosarcopenia” that implies the coexistence of sarcopenia and osteoporosis has appeared[106]. Saeki *et al*[66] showed that the prevalence of osteosarcopenia in patients with PBC was 15.4%. Osteosarcopenia is a hazardous duet because it causes both ease of falling (due to sarcopenia) and bone vulnerability (due to osteoporosis)[106]. Osteoporosis and sarcopenia are especially problematic in postmenopausal women with PBC[66].

Protein-calorie MN and imperceptibly progressive sarcopenia gradually develop in the presence of energy deficiency, occurring in early-stage PBC in patients with clinical manifestations of cholestasis [19]. When cirrhosis develops in PBC patients, the rate of amino acid-driven gluconeogenesis significantly increases[94]. Despite the increased somatic protein degradation associated with calorie MN, the visceral pool of the protein that is synthesized in hepatocytes in PBC remains within normal limits (with minor deviations) until hepatocellular failure develops. The blood level of albumin and globulin in patients with PBC in its early stages and in the presence of severe cholestasis is within the normal range[25,26]. At the same time, the patient’s serum even in the asymptomatic stage of the disease is found to have antimitochondrial antibodies with a diagnostic titer of 1:40 and higher. As cholestasis progresses, there is an increase in the level of  $\gamma$ -globulins[25,26].

The developing impairment of biliary excretion processes (accumulation of bile acids in plasma and hepatocytes) in patients with PBC in the stage of obvious cholestasis results in the gradual development of protein-calorie MN following the pattern of marasmus and sarcopenia. This requires a higher protein diet (predominantly that containing branched-chain amino acids).

As PBC progresses, the resting metabolic rate and systemic thermogenesis increase due to enhanced catabolic processes[37,54]. There is a metabolic situation of resource redistribution, which is amplified as cholestasis and hepatocellular failure progress. The development of hepatocellular failure in end-stage PBC is accompanied by protein synthesizing dysfunction in hepatocytes[54]. In addition to protein-calorie MN in PBC patients during decompensated hepatocellular failure, the synthesis of urea and serum proteins decreases in the liver and the breakdown of visceral proteins increases, which causes a drastic reduction in the plasma level of circulating albumin, and there is higher urinary nitrogen excretion[107]. The continuing enhanced catabolism of somatic proteins is accompanied by the development of visceral protein deficiency, followed by edema and ascites[29]. The clinical manifestations of the impaired trophologic status in patients with end-stage PBC acquire an intermediate form of protein-calorie MN, such as marasmus-kwashiorkor. The development of PCM is facilitated by a decrease in the intestinal absorption of proteins. Portal hypertension resulting in circulatory hypoxia of the intestinal mucosa and in its increased permeability also causes a higher loss of proteins.

The developing impairment of biliary excretion processes (accumulation of bile acids in hepatocytes and plasma) in patients with PBC in the stage of obvious hepatocellular failure (a loss of 75% or more of the functioning liver cells) is accompanied by hepatocyte protein-synthetic dysfunction, which leads to visceral protein deficiency and as a consequence to the development of edema and ascites. There is a transition of the clinical form of PCM as marasmus to mixed marasmus and kwashiorkor MN. This requires a reduction in salt and fluid intake and if there are no signs of hepatic encephalopathy a higher protein diet. Nutritional support during this period should include protein modules with a predominant content of branched-chain amino acids as well as different amounts and ratios of nonessential and essential amino acids[94]. To prevent protein catabolism and to maintain nitrogen balance, it is advisable to have a meal that contains 50 g of carbohydrates before bedtime[108,109].

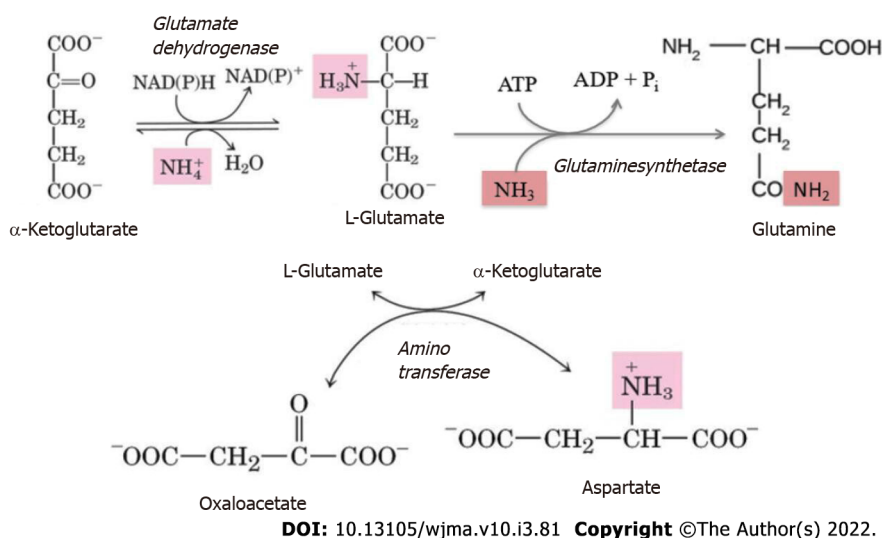
There is a marked improvement in the nutritional status of PBC patients at the stage of development of cirrhosis and resistant ascites after successful treatment of the latter, which emphasizes the importance of nutritional support in these patients[110].

**Hepatic encephalopathy:** In end-stage PBC, progressive hepatocellular failure, portal hypertension, and portosystemic shunting lead to hepatic encephalopathy (HE)[111,112]. HE is considered to mean potentially reversible neuropsychiatric disorders, the development of which is based on detoxifying dysfunction of liver and portal blood shunting, developing in the presence of severe liver injuries[111, 113]. HE is a classic symptom of advanced hepatocellular failure[111,112]. In prognostic terms, the encephalopathy associated with progressive hepatocyte death becomes a formidable and almost always fatal complication of PBC. The prevalence of minimal HE among patients with liver cirrhosis ranges from 30% to 84%[114].

There is a metabolic theory of HE, which is based on the reversibility of its main symptoms in very extensive cerebral disorders[115]. In PBC, one can identify two factors that determine the relationship between the liver and the nervous system and play a role in the pathogenesis of HE[113]: The ability of the liver to detoxify neurotoxic poisons (ammonia, mercaptan, skatole, indole, phenols, *etc*) produced in the intestine by the digestion of food ingredients and as a result of vital microbial activity[116,117].

Cerebral metabolism strongly depends on the maintenance of the normal glycemic level that is appreciably determined by the storage of glycogen in the liver and the rate of glycolysis between meals. As mentioned above, the glycogen stores are depleted in PBC. A decrease in the intensity of oxygen and glucose metabolism in PBC is accompanied by reductions in energy production and neuronal activity, which contributes to the development of signs of HE[115]. Positron emission tomography shows that in HE there is a strong correlation between the reduction in cerebral blood flow (in the frontal and parietal





**Figure 4** Use of  $\alpha$ -ketoglutarate, glutamate, oxaloacetate, and aspartate to detoxify ammonia.

lobes of the cerebral cortex), which is accompanied by decreased glucose metabolism and the results of neuropsychological tests[113].

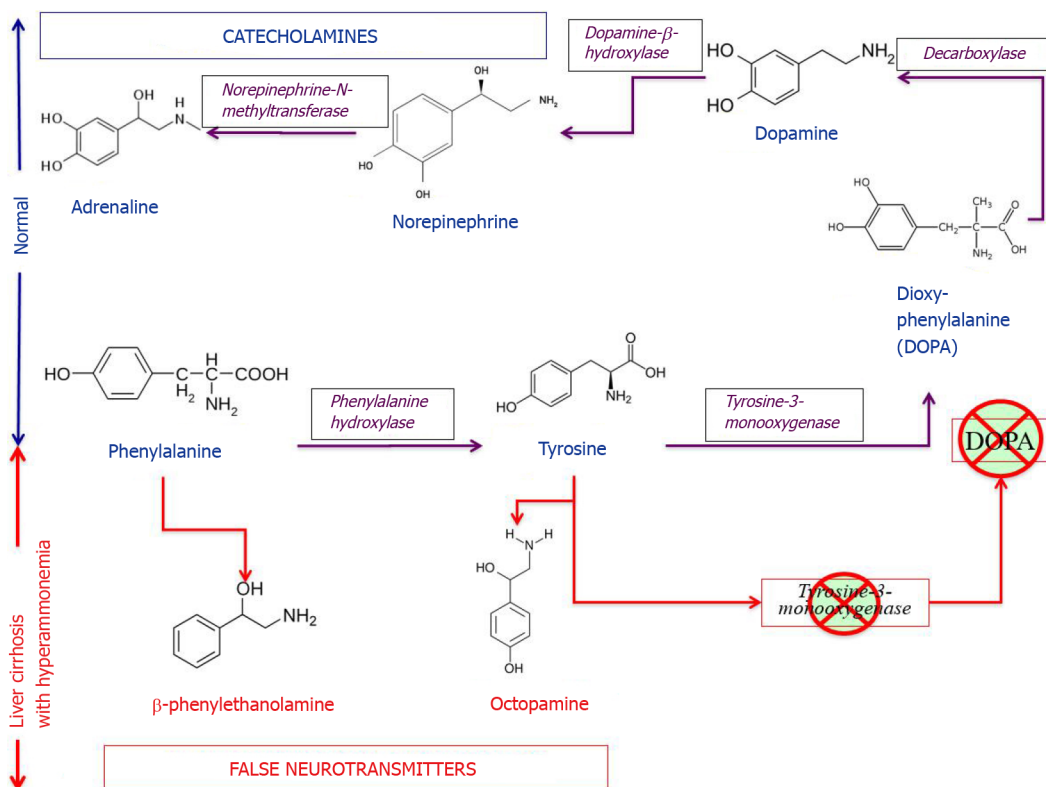
The basis for the pathogenesis of HE is hepatocellular failure, accompanied by a decrease in the hepatic clearance of neurotoxic poisons produced in the intestine by the digestion of food ingredients and as a result of vital microbial activity, portosystemic shunting, and amino acid metabolic disturbance that gives rise to false neurotransmitters[115].

Protein and amino acid degradation results in the formation of amine nitrogen that, unlike the hydrocarbon portion of amino acids, is unsuitable for energy production[94]. Therefore, the amino groups that cannot be reused, for example, in transamination reactions, are converted to ammonia. The latter in the cells is produced by the deamination of amino acids, nucleotides, and biogenic amines. Ammonia is a toxic substance and its blood concentration in health does not exceed 50  $\mu\text{mol/L}$ . In health, about 7% of the ammonia formed in the body passes through the tissue of the brain without causing any changes in its functions[111]. The fundamental reaction of ammonia neutralization, which takes place in all tissues, is the binding of NH<sub>3</sub> to glutamate to form glutamine (Figure 4). Its major tissue suppliers of glutamine are muscles, brain, and liver.

In addition to ammonia formed in tissues, significant amounts of NH<sub>3</sub> are generated in the intestine by the bacterial microflora and as a result of food protein hydrolysis. The intestinal absorption of ammonia can cause its significant supply to the liver. This occurs with intake of higher protein foods, incomplete bowel evacuation, alkalization of intestinal contents, overgrowth of opportunistic pathogens, and bleeding esophageal/gastric varices with the development of portal hypertension[112]. The concentration of toxic products, primarily ammonia, as well as skatole, indole, and phenols, thereof may increase in the intestine. In health, these substances enter the portal venous system and undergo the ornithine cycle in the liver. Through deamination, transamination, and decarboxylation reactions, they are converted to urea, a product that is relatively harmless for the body[94]. Urea is the major end product of nitrogen metabolism (85% of all nitrogen is excreted from the body with urea). Urea in the human body is synthesized only in the liver[91].

Neuronal dysfunction results from elevated neurotoxic ammonia levels in the blood in hyperammonemia[110]. The latter is observed in patients with PBC in the cirrhosis developmental stage and is caused by the increased intestinal absorption of ammonia, its impaired hepatocyte detoxification (reduced urea cycle enzyme activity), and lower ammonia binding in hypotrophic skeletal muscles (decreased glutamine synthetase activity)[112,118]. The disturbed hepatic blood flow is of great importance in the development of HE. The development of cirrhosis in end-stage PBC causes blood to shunt either inside the liver itself (portal hepatic venous anastomoses that function as intrahepatic shunts form around the lobules) or blood to flow from the portal vein into the general circulation, bypassing the liver through natural collaterals[115]. Portosystemic shunting and collateral blood flow pathways cause blood flowing from the intestine to enter the general circulation, bypassing the liver. The toxic substances and primarily ammonia, which are contained in the blood portal system, enter the general bloodstream non-neutralized.

Hyperammonemia in patients with PBC triggers compensatory mechanisms of the metabolism and clearance of ammonia, by activating the processes of its neutralization in skeletal muscles and neurons [119]. The elevated blood level of ammonia results in its increased penetration through the blood-brain barrier into the brain, which has an adverse effect on astrocytes. Ammonia detoxification in the astrocytes is affected by glutamine synthetase, leading to the binding of ammonia to glutamate to yield glutamine (Figure 4)[120].



DOI: 10.13105/wjma.v10.i3.81 Copyright ©The Author(s) 2022.

Figure 5 Synthesis of false neurotransmitters in hyperammonemia.

Excess ammonia in the muscle tissues can also be inactivated due to its interaction with both glutamate and aspartate to synthesize glutamine (Figure 4)[113,121]. When ammonia is excessive, there is a depletion of glutamate and aspartate stores (with simultaneous accumulation of glutamine). The larger amount of glutamine produced is released into the bloodstream in exchange for branched-chain amino acids[122].

In PBC, hyperammonemia thus requires increased production of glutamate and aspartate from  $\alpha$ -ketoglutarate and oxaloacetate. This causes a portion of  $\alpha$ -ketoglutarate and oxaloacetate to leak away from the tricarboxylic acid cycle, which is accompanied by decreased ATP synthesis. Since the neurons are especially sensitive to decreased energy production, this fact plays a role in the mechanism for the development of clinical signs of HE and causes enhanced energy deficiency in patients with PBC.

The muscles are also sensitive to decreased ATP energy production. Thus, to increase the levels of  $\alpha$ -ketoglutarate and oxaloacetate in muscles, which are needed for the Krebs cycle, and to maintain a sufficient glutamate level, accelerated branched-chain amino acid catabolism occurs in PBC patients with hyperammonemia. This results in the insufficient synthesis of muscle proteins and their depletion [123,124]. Hyperammonemia is associated with HE, enhanced branched-chain amino acid catabolism, and sarcopenia[125]. Sarcopenia exacerbates HE, which in turn aggravates a decline in food intake and the development of MN. There is a vicious circle that is difficult to break.

There is evidence that hyperammonemia affects the saturation center in the hypothalamus and suppresses appetite, which can also increase protein-calorie MN in patients with PBC[111,113].

Along with hyperammonemia, a disturbance in the synthesis and metabolism of the major neurotransmitters derived from the aromatic amino acids tyrosine and phenylalanine plays an important role in the pathogenesis of HE in patients with PBC at the stage of development of hepatocellular failure and portosystemic shunting[115]. ter Borg *et al*[39] found elevated concentrations of the aromatic amino acids, tyrosine and phenylalanine, and decreased blood concentrations of the branched-chain amino acids, valine, isoleucine, and leucine, in patients with PBC both at the stage of development of cirrhosis and without cirrhosis[39]. Increased entry of aromatic amino acids into the blood (due to their impaired catabolism in the liver) inhibits the enzyme systems involved in the conversion of aromatic amino acids to catecholamines, which reduces the biosynthesis of dopamine and norepinephrine and increases the synthesis of serotonin from tryptophan. Entering the brain *via* the blood-brain barrier, tyrosine and phenylalanine are involved in the synthesis of false neurotransmitters, such as  $\beta$ -phenylethanolamine and octopamine (Figure 5).

Tyramine is formed from the amino acid tyrosine under the action of bacterial decarboxylases in the intestine. The former is a physiologically active and toxic substance. It easily enters the general circulation and penetrating the blood-brain barrier affects excitatory and inhibitor processes in the

nervous system when patients with PBC undergo portosystemic shunting. Along with hyperammonemia, false neurotransmitters (tyramine) inhibit neuronal function and enhance HE progression [39]. Cognitive impairment, forgetfulness, feeling sleepy during meals and snacks, and having difficulties in cooking food when HE develops in late-stage PBC are significant challenges faced by patients in this group [126]. Subsequently, MN itself becomes an independent predictor of mortality in patients with PBC.

The developing impairment of biliary excretion processes (accumulation of bile acids in hepatocytes) in patients with PBC causes obvious hepatocellular failure, which is accompanied by hepatocyte detoxifying dysfunction, hyperammonemia, and the formation of false neurotransmitters with the development of HE. This requires a strict dietary protein restriction, branched-chain amino acid diets (containing a minimum amount of aromatic amino acids), the prescription of antibiotics (the effect of which is based on their effect on microorganisms that produce nitrogenous compounds in the gastrointestinal tract), aimed at a change in the ratio of neurotransmitters, a decrease in the formation and absorption of ammonia and other toxins formed in the intestine, and an increase in the elimination of ammonia. Strict vegetarian diets (vegetable protein up to 120 g/d) and dairy proteins are generally well tolerated (presumably due to the low aromatic amino acid levels). During this period, patients with PBC usually need to be placed on a waiting list to undergo liver transplant surgery. The European Society for Clinical Nutrition and Metabolism guidelines are used in clinical practice to meet the energy and protein requirements of patients with MN and weight loss in surgical or intensive care units.

Poor nutritional status has serious implications for postoperative complications among candidates for liver transplantation, as it is an important predictor of mortality and postoperative complications in patients with PBC.

## CONCLUSION

PBC is a chronic, slowly progressive disease of the liver and biliary tract, which results in a change in the trophological status of these patients. The causes of MN in PBC are complex and multifactorial since the liver is involved in many metabolic processes of the body. But the leading role in the development of MN in patients with PBC is played by a disturbance in biliary excretion processes, and as a consequence there are changes in the metabolism of macronutrients and micronutrients. Trophological insufficiency develops gradually and imperceptibly as cholestasis progresses with the insufficient entry of bile acids in the duodenum with their simultaneous deposition in hepatocytes and entrance into the general circulation. It is precisely these changes that trigger the development of calorie (energy) MN, even in the asymptomatic and early stages of the disease. Compensatory mechanisms for obtaining energy from fatty acids and amino acids of somatic proteins are turned on with time, which is accompanied by protein-calorie (as marasmus) MN with a slowly progressive weight loss. Lipid metabolism disorders also develop. There is an increased synthesis of cholesterol and phospholipids to neutralize the detergent effect of excess plasma bile acids. Insufficient intestinal entry of bile acids contributes to the development of steatorrhea and fat-soluble vitamin deficiencies in these patients. Hence, an increase in PCM occurs and vitamin and mineral deficiencies gradually progress. The latter gives rise to osteoporosis and osteosarcopenia. Prolonged exposure of hepatocytes to excessive bile acid concentrations leads to liver fibrosis and cirrhosis, portal hypertension, and portosystemic shunting to impair protein synthesizing and detoxifying functions of the liver. Occurring visceral protein deficiency results in edema, ascites, and increased PCM with a transition to the mixed form of marasmus and kwashiorkor. Developing hyperammonemia and resulting false neurotransmitters lead to changes in the central nervous system, and HE develops. MN progresses as the severity of the disease progresses. All this makes the correction of MN especially difficult in patients with PBC. Thus, assessment of nutritional status and control of MN are of great importance for improving treatment outcomes in these patients. The presented mechanisms of trophological changes in PBC should assist in timely recognition of MN and in correctly selecting a nutrition support regimen for these patients at different stages of disease development along with symptomatic therapy.

## ACKNOWLEDGEMENTS

The authors are grateful to Tatiana Igorevna Karlovich and Alexander Igorevich Burmistrov for discussions and technical assistance in preparing the review for publication.

## FOOTNOTES

**Author contributions:** Reshetnyak VI and Maev IV have equally contributed to the conception and design of the study, literature review and analysis, drafting and critical revision and editing, and final approval of the final

version.

**Conflict-of-interest statement:** All the authors declare that they have no conflict of interest.

**Open-Access:** This article is an open-access article that was selected by an in-house editor and fully peer-reviewed by external reviewers. It is distributed in accordance with the Creative Commons Attribution NonCommercial (CC BY-NC 4.0) license, which permits others to distribute, remix, adapt, build upon this work non-commercially, and license their derivative works on different terms, provided the original work is properly cited and the use is non-commercial. See: <https://creativecommons.org/licenses/by-nc/4.0/>

**Country/Territory of origin:** Russia

**ORCID number:** Vasily Ivanovich Reshetnyak 0000-0003-3614-5052; Igor Veniaminovich Maev 0000-0001-6114-564X.

**S-Editor:** Liu JH

**L-Editor:** Filipodia

**P-Editor:** Liu JH

## REFERENCES

- 1 Alberino F, Gatta A, Amodio P, Merkel C, Di Pascoli L, Boffo G, Caregaro L. Nutrition and survival in patients with liver cirrhosis. *Nutrition* 2001; **17**: 445-450 [PMID: 11399401 DOI: 10.1016/s0899-9007(01)00521-4]
- 2 Puri P, Dhiman RK, Taneja S, Tandon P, Merli M, Anand AC, Arora A, Acharya SK, Benjamin J, Chawla YK, Dadhich S, Duseja A, Eapan CE, Goel A, Kalra N, Kapoor D, Kumar A, Madan K, Nagral A, Pandey G, Rao PN, Saigal S, Saraf N, Saraswat VA, Saraya A, Sarin SK, Sharma P, Shalimar, Shukla A, Sidhu SS, Singh N, Singh SP, Srivastava A, Wadhawan M. Nutrition in Chronic Liver Disease: Consensus Statement of the Indian National Association for Study of the Liver. *J Clin Exp Hepatol* 2021; **11**: 97-143 [PMID: 33679050 DOI: 10.1016/j.jceh.2020.09.003]
- 3 Tkacheva ON, Tutelyan VA, Shestopalov AE, Kotovskaya YuV, Starodubova AV, Pogozheva AV, Ostapenko VS, Runikhina NK, Sharashkina NV, Krylov KYu, Varaeva YuR, Gerasimenko ON, Gorobey AM, Livantsova EN, Pereverzev AP, Shpagina LA. [Nutritional insufficiency (malnutrition) in older adults. Clinical recommendations]. *Russian Journal of Geriatric Medicine* 2021; **1**: 15-34 [DOI: 10.37586/2686-8636-1-2021-15-34]
- 4 Phillips W, Doley J, Boi K. Malnutrition definitions in clinical practice: To be E43 or not to be? *Health Inf Manag* 2020; **49**: 74-79 [PMID: 31130015 DOI: 10.1177/1833358319852304]
- 5 Kostyukevich OI, Sviridov SV, Rylova AK, Rylova NV, Korsunskaya MI, Kolesnikova EA. [Malnutrition: from pathogenesis to current methods for diagnosis and treatment]. *Ter Arkh* 2017; **89**: 216-225 [PMID: 29488484 DOI: 10.17116/terarkh20178912216-225]
- 6 "Fact sheets - Malnutrition". Retrieved November 19, 2021. Available from: [www.who.int](http://www.who.int)
- 7 Basics in clinical nutrition- ESPEN, Fifth Edition, by Luboš Sobotka (editor). Galén, Prague: Publishing House; 2000; 300
- 8 Popova TS, Shestopalov AE, Tamazashvili TS, Leiderman IN. [Nutritional support for patients in critical conditions]. *M.: M.-Vesti*; 2002; 319 (In Russ.) ISBN: 5-901598-04-0
- 9 Hakim A. Malnutrition prevalence and nutrition counseling in developing countries: A case study. *IJNHS* 2016; **3**: 19-22 Available from: <http://www.openscienceonline.com/journal/ijnhs>
- 10 Fortes RC. Nutritional implications in chronic liver diseases. *J Liver Res Disord Ther* 2017; **3**: 131-133 [DOI: 10.15406/jlrdt.2017.03.00071]
- 11 Carvalho L, Parise ER. Evaluation of nutritional status of nonhospitalized patients with liver cirrhosis. *Arq Gastroenterol* 2006; **43**: 269-274 [PMID: 17406753 DOI: 10.1590/s0004-28032006000400005]
- 12 Hsu CS, Kao JH. Sarcopenia and chronic liver diseases. *Expert Rev Gastroenterol Hepatol* 2018; **12**: 1229-1244 [PMID: 30791794 DOI: 10.1080/17474124.2018.1534586]
- 13 Nutritional status in cirrhosis. Italian Multicentre Cooperative Project on Nutrition in Liver Cirrhosis. *J Hepatol* 1994; **21**: 317-325 [PMID: 7836699 DOI: 10.1016/S0168-8278(05)80308-3]
- 14 Müller MJ. Malnutrition in cirrhosis. *J Hepatol* 1995; **23** Suppl 1: 31-35 [PMID: 8551009 DOI: 10.1016/S0168-8278(21)80004-5]
- 15 Caregaro L, Alberino F, Amodio P, Merkel C, Bolognesi M, Angeli P, Gatta A. Malnutrition in alcoholic and virus-related cirrhosis. *Am J Clin Nutr* 1996; **63**: 602-609 [PMID: 8599326 DOI: 10.1093/ajcn/63.4.602]
- 16 Mendenhall CL, Moritz TE, Roselle GA, Morgan TR, Nemchausk BA, Tamburro CH, Schiff ER, McClain CJ, Marsano LS, Allen JJ. Protein energy malnutrition in severe alcoholic hepatitis: diagnosis and response to treatment. The VA Cooperative Study Group #275. *JPEN J Parenter Enteral Nutr* 1995; **19**: 258-265 [PMID: 8523623 DOI: 10.1177/0148607195019004258]
- 17 Campillo B, Richardet JP, Scherman E, Bories PN. Evaluation of nutritional practice in hospitalized cirrhotic patients: results of a prospective study. *Nutrition* 2003; **19**: 515-521 [PMID: 12781851 DOI: 10.1016/s0899-9007(02)01071-7]
- 18 Tandon M, Singh H, Singla N, Jain P, Pandey CK. Tongue thickness in health vs cirrhosis of the liver: Prospective observational study. *World J Gastrointest Pharmacol Ther* 2020; **11**: 59-68 [PMID: 32844044 DOI: 10.4292/wjgpt.v11.i3.59]
- 19 Siddiqui ATS, Parkash O, Hashmi SA. Malnutrition and liver disease in a developing country. *World J Gastroenterol* 2021; **27**: 4985-4998 [PMID: 34497430 DOI: 10.3748/wjg.v27.i30.4985]
- 20 Roongpisuthipong C, Sobhonslidsuk A, Nantiruj K, Songchitsomboon S. Nutritional assessment in various stages of liver cirrhosis. *Nutrition* 2001; **17**: 761-765 [PMID: 11527674 DOI: 10.1016/s0899-9007(01)00626-8]



- 21 **Figueiredo F**, Dickson ER, Pasha T, Kasparova P, Therneau T, Malinchoc M, DiCecco S, Francisco-Ziller N, Charlton M. Impact of nutritional status on outcomes after liver transplantation. *Transplantation* 2000; **70**: 1347-1352 [PMID: 11087151 DOI: [10.1097/00007890-200011150-00014](https://doi.org/10.1097/00007890-200011150-00014)]
- 22 **Wicks C**, Bray GP, Williams R. Nutritional assessment in primary biliary cirrhosis: the effect of disease severity. *Clinical Nutrition* 1995; **14**: 29-34 [DOI: [10.1016/s0261-5614\(06\)80007-5](https://doi.org/10.1016/s0261-5614(06)80007-5)]
- 23 **Morgan MY**. Enteral nutrition in chronic liver disease. *Acta Chir Scand Suppl* 1981; **507**: 81-90 [PMID: 6797208]
- 24 **Sivakumar T**, Kowdley KV. Anxiety and Depression in Patients with Primary Biliary Cholangitis: Current Insights and Impact on Quality of Life. *Hepatic Medicine: Evidence and Research* 2021; **13**: 83–92. [August 29, 2021] Available from: <https://www.dovepress.com/>
- 25 **Reshetnyak VI**. Concept on the pathogenesis and treatment of primary biliary cirrhosis. *World J Gastroenterol* 2006; **12**: 7250-7262 [PMID: 17143938 DOI: [10.3748/wjg.v12.i45.7250](https://doi.org/10.3748/wjg.v12.i45.7250)]
- 26 **Reshetnyak VI**. Primary biliary cirrhosis: Clinical and laboratory criteria for its diagnosis. *World J Gastroenterol* 2015; **21**: 7683-7708 [PMID: 26167070 DOI: [10.3748/wjg.v21.i25.7683](https://doi.org/10.3748/wjg.v21.i25.7683)]
- 27 **Ilchenko LU**, Reshetnyak VI. [Clinical and laboratory criteria for the diagnosis of primary biliary cirrhosis and modern therapy]. *Russian Journal of Gastroenterology, Hepatology and Coloproctology* 2011; **5**: 41-51
- 28 **McCullough AJ**, Bugianesi E. Protein-calorie malnutrition and the etiology of cirrhosis. *Am J Gastroenterol* 1997; **92**: 734-738 [PMID: 9149179]
- 29 **Alnounou M**, Munoz SJ. Nutrition Concerns of the Patient with Primary Biliary Cirrhosis or Primary Sclerosing Cholangitis. [Nutrition issues in gastroenterology, series #37]. *Practical Gastroenterology* 2006; **30**: 92-100
- 30 **Maharshi S**, Sharma BC, Srivastava S. Malnutrition in cirrhosis increases morbidity and mortality. *J Gastroenterol Hepatol* 2015; **30**: 1507-1513 [PMID: 25974421 DOI: [10.1111/jgh.12999](https://doi.org/10.1111/jgh.12999)]
- 31 **D'Amico G**, Garcia-Tsao G, Pagliaro L. Natural history and prognostic indicators of survival in cirrhosis: a systematic review of 118 studies. *J Hepatol* 2006; **44**: 217-231 [PMID: 16298014 DOI: [10.1016/j.jhep.2005.10.013](https://doi.org/10.1016/j.jhep.2005.10.013)]
- 32 **Lindor KD**, Gershwin ME, Poupon R, Kaplan M, Bergasa NV, Heathcote EJ; American Association for Study of Liver Diseases. Primary biliary cirrhosis. *Hepatology* 2009; **50**: 291-308 [PMID: 19554543 DOI: [10.1002/hep.22906](https://doi.org/10.1002/hep.22906)]
- 33 **Natasha AV**. Primary biliary cirrhosis and primary sclerosing cholangitis and nutrition. (Part 4) In. *Advanced Nutrition and Dietetics in Gastroenterology*. (Ed. Miranda Lomer) 2014; 273–279 [DOI: [10.1002/9781118872796.ch4](https://doi.org/10.1002/9781118872796.ch4)]
- 34 **Fedorov IG**, Gavrilina NS, Sedova GA, Kosyura S, Ilchenko LU, Oskanova RS, Totolyan G. [Trophological insufficiency in gastroenterological patients]. *Methodical manual*. (Ed. Storozhakov GI). 2015. 53 p
- 35 **Tajiri K**, Shimizu Y. Recent advances in the management of pruritus in chronic liver diseases. *World J Gastroenterol* 2017; **23**: 3418-3426 [PMID: 28596678 DOI: [10.3748/wjg.v23.i19.3418](https://doi.org/10.3748/wjg.v23.i19.3418)]
- 36 **Ghent CN**, Bloomer JR. Itch in liver disease: facts and speculations. *Yale J Biol Med* 1979; **52**: 77-82 [PMID: 452625]
- 37 **Green JH**, Bramley PN, Losowsky MS. Are patients with primary biliary cirrhosis hypermetabolic? *Hepatology* 1991; **14**: 464-472 [PMID: 1874491]
- 38 **Parikh-Patel A**, Gold EB, Utts J, Worman H, Krivy KE, Gershwin ME. Functional status of patients with primary biliary cirrhosis. *Am J Gastroenterol* 2002; **97**: 2871-2879 [PMID: 12425562 DOI: [10.1111/j.1572-0241.2002.07055.x](https://doi.org/10.1111/j.1572-0241.2002.07055.x)]
- 39 **ter Borg PC**, Fekkes D, Vrolijk JM, van Buuren HR. The relation between plasma tyrosine concentration and fatigue in primary biliary cirrhosis and primary sclerosing cholangitis. *BMC Gastroenterol* 2005; **5**: 11 [PMID: 15790420 DOI: [10.1186/1471-230X-5-11](https://doi.org/10.1186/1471-230X-5-11)]
- 40 **Jopson L**, Jones DE. Fatigue in Primary Biliary Cirrhosis: Prevalence, Pathogenesis and Management. *Dig Dis* 2015; **33** Suppl 2: 109-114 [PMID: 26641884 DOI: [10.1159/000440757](https://doi.org/10.1159/000440757)]
- 41 **Morgan MY**, Marshall AW, Milsom JP, Sherlock S. Plasma amino-acid patterns in liver disease. *Gut* 1982; **23**: 362-370 [PMID: 7076013 DOI: [10.1136/gut.23.5.362](https://doi.org/10.1136/gut.23.5.362)]
- 42 **Morgan MY**, Milsom JP, Sherlock S. Plasma ratio of valine, leucine and isoleucine to phenylalanine and tyrosine in liver disease. *Gut* 1978; **19**: 1068-1073 [PMID: 730076 DOI: [10.1136/gut.19.11.1068](https://doi.org/10.1136/gut.19.11.1068)]
- 43 **Griffiths L**, Jones DE. Pathogenesis of primary biliary cirrhosis and its fatigue. *Dig Dis* 2014; **32**: 615-625 [PMID: 25034296 DOI: [10.1159/000360515](https://doi.org/10.1159/000360515)]
- 44 **Sogolow ED**, Lasker JN, Short LM. Fatigue as a major predictor of quality of life in women with autoimmune liver disease: the case of primary biliary cirrhosis. *Womens Health Issues* 2008; **18**: 336-342 [PMID: 18420421 DOI: [10.1016/j.whi.2007.12.005](https://doi.org/10.1016/j.whi.2007.12.005)]
- 45 **Dolz C**, Raurich JM, Ibáñez J, Obrador A, Marsé P, Gayá J. Ascites increases the resting energy expenditure in liver cirrhosis. *Gastroenterology* 1991; **100**: 738-744 [PMID: 1993495 DOI: [10.1016/0016-5085\(91\)80019-6](https://doi.org/10.1016/0016-5085(91)80019-6)]
- 46 **Heymsfield SB**, Waki M, Reinus J. Are patients with chronic liver disease hypermetabolic? *Hepatology* 1990; **11**: 502-505 [PMID: 2179099 DOI: [10.1002/hep.1840110324](https://doi.org/10.1002/hep.1840110324)]
- 47 **Reshetnyak VI**, Maev IV. Liver and bile formation mechanisms. Riga, Latvia: LAP LAMBERT Academic Publishing; 2021; 105 p. ISBN: 978-620-4-71868-2
- 48 **Zhang Y**, Hu X, Chang J, Chen J, Han X, Zhang T, Shen J, Shang N, Han J, Wang H, Kang W, Meng F. The liver steatosis severity and lipid characteristics in primary biliary cholangitis. *BMC Gastroenterol* 2021; **21**: 395 [PMID: 34686147 DOI: [10.1186/s12876-021-01974-4](https://doi.org/10.1186/s12876-021-01974-4)]
- 49 **Leuschner U**. Primary biliary cirrhosis--presentation and diagnosis. *Clin Liver Dis* 2003; **7**: 741-758 [PMID: 14594129 DOI: [10.1016/s1089-3261\(03\)00101-6](https://doi.org/10.1016/s1089-3261(03)00101-6)]
- 50 **Lanspa SJ**, Chan AT, Bell JS 3rd, Go VL, Dickson ER, DiMaggio EP. Pathogenesis of steatorrhea in primary biliary cirrhosis. *Hepatology* 1985; **5**: 837-842 [PMID: 2411648 DOI: [10.1002/hep.1840050522](https://doi.org/10.1002/hep.1840050522)]
- 51 **Sherlock S**. Nutritional complications of biliary cirrhosis. Chronic cholestasis. *Am J Clin Nutr* 1970; **23**: 640-644 [PMID: 5450106 DOI: [10.1093/ajcn/23.5.640](https://doi.org/10.1093/ajcn/23.5.640)]
- 52 **Ros E**, García-Pugés A, Reixach M, Cusó E, Rodés J. Fat digestion and exocrine pancreatic function in primary biliary cirrhosis. *Gastroenterology* 1984; **87**: 180-187 [PMID: 6724261]
- 53 **Lack L**, Weiner IM. Role of the intestine during the enterohepatic circulation of bile salts. *Gastroenterology* 1967; **52**:



- 282-287 [PMID: [5335883](#)]
- 54 **Traub J**, Reiss L, Aliwa B, Stadlbauer V. Malnutrition in Patients with Liver Cirrhosis. *Nutrients* 2021; **13** [PMID: [33562292](#) DOI: [10.3390/nu13020540](#)]
  - 55 **DiBaise JK**, Paustian FF. Steatorrhea and weight loss in a 72-year-old man: primary biliary cirrhosis? *Am J Gastroenterol* 1998; **93**: 2226-2230 [PMID: [9820402](#) DOI: [10.1016/S0002-9270\(98\)00501-2](#)]
  - 56 **Phillips JR**, Angulo P, Petterson T, Lindor KD. Fat-soluble vitamin levels in patients with primary biliary cirrhosis. *Am J Gastroenterol* 2001; **96**: 2745-2750 [PMID: [11569705](#) DOI: [10.1016/S0002-9270\(01\)02696-X](#)]
  - 57 **Isaia G**, Di Stefano M, Roggia C, Ardisson P, Rosina F. Bone disorders in cholestatic liver diseases. *Forum (Genova)* 1998; **8**: 28-38 [PMID: [9514992](#)]
  - 58 **Goel V**, Kar P. Hepatic osteodystrophy. *Trop Gastroenterol* 2010; **31**: 82-86 [PMID: [20862980](#)]
  - 59 **Seki A**, Ikeda F, Miyatake H, Takaguchi K, Hayashi S, Osawa T, Fujioka SI, Tanaka R, Ando M, Seki H, Iwasaki Y, Yamamoto K, Okada H. Risk of secondary osteoporosis due to lobular cholestasis in non-cirrhotic primary biliary cholangitis. *J Gastroenterol Hepatol* 2017; **32**: 1611-1616 [PMID: [28114749](#) DOI: [10.1111/jgh.13746](#)]
  - 60 **Parés A**, Guañabens N. Primary biliary cholangitis and bone disease. *Best Pract Res Clin Gastroenterol* 2018; **34-35**: 63-70 [PMID: [30343712](#) DOI: [10.1016/j.bpg.2018.06.005](#)]
  - 61 **Danford CJ**, Trivedi HD, Papamichael K, Tapper EB, Bonder A. Osteoporosis in primary biliary cholangitis. *World J Gastroenterol* 2018; **24**: 3513-3520 [PMID: [30131657](#) DOI: [10.3748/wjg.v24.i31.3513](#)]
  - 62 **Wariaghli G**, Allali F, El Maghraoui A, Hajjaj-Hassouni N. Osteoporosis in patients with primary biliary cirrhosis. *Eur J Gastroenterol Hepatol* 2010; **22**: 1397-1401 [PMID: [20926953](#) DOI: [10.1097/MEG.0b013e3283405939](#)]
  - 63 Consensus development conference: prophylaxis and treatment of osteoporosis. *Osteoporos Int* 1991; **1**: 114-117 [PMID: [1790392](#)]
  - 64 Consensus development conference: diagnosis, prophylaxis, and treatment of osteoporosis. *Am J Med* 1993; **94**: 646-650 [PMID: [8506892](#) DOI: [10.1016/0002-9343\(93\)90218-e](#)]
  - 65 NIH Consensus Development Panel on Osteoporosis Prevention, Diagnosis, and Therapy, March 7-29, 2000: highlights of the conference. *South Med J* 2001; **94**: 569-573 [PMID: [11440324](#)]
  - 66 **Saeki C**, Oikawa T, Kanai T, Nakano M, Torisu Y, Sasaki N, Abo M, Saruta M, Tsubota A. Relationship between osteoporosis, sarcopenia, vertebral fracture, and osteosarcopenia in patients with primary biliary cholangitis. *Eur J Gastroenterol Hepatol* 2021; **33**: 731-737 [PMID: [32558699](#) DOI: [10.1097/MEG.0000000000001791](#)]
  - 67 **Collier JD**, Ninkovic M, Compston JE. Guidelines on the management of osteoporosis associated with chronic liver disease. *Gut* 2002; **50** Suppl 1: i1-i9 [PMID: [11788576](#) DOI: [10.1136/gut.50.suppl\\_1.i1](#)]
  - 68 **Kowdley KV**. Lipids and lipid-activated vitamins in chronic cholestatic diseases. *Clin Liver Dis* 1998; **2**: 373-389, x [PMID: [15560038](#) DOI: [10.1016/S1089-3261\(05\)70013-1](#)]
  - 69 **Sitrin MD**, Bengoa JM. Intestinal absorption of cholecalciferol and 25-hydroxycholecalciferol in chronic cholestatic liver disease. *Am J Clin Nutr* 1987; **46**: 1011-1015 [PMID: [2825501](#) DOI: [10.1093/ajcn/46.6.1011](#)]
  - 70 **Kaplan MM**, Gershwin ME. Primary biliary cirrhosis. *N Engl J Med* 2005; **353**: 1261-1273 [PMID: [16177252](#) DOI: [10.1056/NEJM199611213352107](#)]
  - 71 **Wegener M**, Borsch G, Schmidt G. Hepatic osteodystrophy: osteoporosis, osteomalacia and vitamin-D-metabolism [German]. *Innere Medizin* 1985; **12**: 63-68
  - 72 **Rosen H**. Primary biliary cirrhosis and bone disease. *Hepatology* 1995; **21**: 253-255 [PMID: [7806161](#) DOI: [10.1016/0270-9139\(95\)90435-2](#)]
  - 73 **Kehayoglou K**, Hadziyannis S, Kostamis P, Malamos B. The effect of medium-chain triglyceride on 47 calcium absorption in patients with primary biliary cirrhosis. *Gut* 1973; **14**: 653-656 [PMID: [4743495](#) DOI: [10.1136/gut.14.8.653](#)]
  - 74 **Niu T**, Xu X. Candidate genes for osteoporosis. Therapeutic implications. *Am J Pharmacogenomics* 2001; **1**: 11-19 [PMID: [12173309](#) DOI: [10.2165/00129785-200101010-00002](#)]
  - 75 **Puchkova LV**, Dorokhova II. [Novye geneticheskie faktory riska pri osteoporoze]. *Osteoporosis and Bone Diseases* 2005; **8**: 16-19 [DOI: [10.14341/osteo2005116-19](#)]
  - 76 **Vasilyeva LV**, Bezzubtseva EN, Gosteva EV, Evstratova EF. [The role of genetic and metabolic disorders in osteoporosis]. *Medical Herald of the South of Russia* 2021; **12**: 6-13 [DOI: [10.21886/2219-8075-2021-12-1-6-13](#)]
  - 77 **Adler RA**, Rosen CJ. Glucocorticoids and osteoporosis. *Endocrinol Metab Clin North Am* 1994; **23**: 641-654 [PMID: [7805660](#)]
  - 78 **Chavassieux P**, Pastoureau P, Chapuy MC, Delmas PD, Meunier PJ. Glucocorticoid-induced inhibition of osteoblastic bone formation in ewes: a biochemical and histomorphometric study. *Osteoporos Int* 1993; **3**: 97-102 [PMID: [8453197](#) DOI: [10.1007/BF01623380](#)]
  - 79 **Libanati CR**, Baylink DJ. Prevention and treatment of glucocorticoid-induced osteoporosis. A pathogenetic perspective. *Chest* 1992; **102**: 1426-1435 [PMID: [1424863](#) DOI: [10.1378/chest.102.5.1426](#)]
  - 80 **Farias AQ**, Gonçalves LL, Cançado EL, Seguro AC, Campos SB, Abrantes-Lemos CP, Carrilho FJ. Bone disease in primary biliary cirrhosis: lack of association with distal renal tubular acidosis. *J Gastroenterol Hepatol* 2005; **20**: 147-152 [PMID: [15610460](#) DOI: [10.1111/j.1400-1746.2004.03517.x](#)]
  - 81 **Levy C**, Lindor KD. Management of osteoporosis, fat-soluble vitamin deficiencies, and hyperlipidemia in primary biliary cirrhosis. *Clin Liver Dis* 2003; **7**: 901-910 [PMID: [14594136](#) DOI: [10.1016/S1089-3261\(03\)00097-7](#)]
  - 82 **Guañabens N**, Parés A, Mariñoso L, Brancós MA, Piera C, Serrano S, Rivera F, Rodés J. Factors influencing the development of metabolic bone disease in primary biliary cirrhosis. *Am J Gastroenterol* 1990; **85**: 1356-1362 [PMID: [2220729](#)]
  - 83 **Verma A**, Maxwell JD, Ang L, Davis T, Hodges S, Northfield TC, Zaidi M, Pazianas M. Ursodeoxycholic acid enhances fractional calcium absorption in primary biliary cirrhosis. *Osteoporos Int* 2002; **13**: 677-682 [PMID: [12181628](#) DOI: [10.1007/s001980200092](#)]
  - 84 **Newton J**, Francis R, Prince M, James O, Bassendine M, Rawlings D, Jones D. Osteoporosis in primary biliary cirrhosis revisited. *Gut* 2001; **49**: 282-287 [PMID: [11454807](#) DOI: [10.1136/gut.49.2.282](#)]

- 85 **Lakatos PL**, Bajnok E, Tornai I, Folhoffer A, Horváth A, Lakatos P, Szalay F. [Decreased bone mineral density and gene polymorphism in primary biliary cirrhosis]. *Orv Hetil* 2004; **145**: 331-336 [PMID: [15049048](#)]
- 86 **Pereira SP**, O'Donohue J, Moniz C, Phillips MG, Abraha H, Buxton-Thomas M, Williams R. Transdermal hormone replacement therapy improves vertebral bone density in primary biliary cirrhosis: results of a 1-year controlled trial. *Aliment Pharmacol Ther* 2004; **19**: 563-570 [PMID: [14987325](#) DOI: [10.1111/j.1365-2036.2004.01890.x](#)]
- 87 **Paintin J**, Cooper C, Dennison E. Osteosarcopenia. *Br J Hosp Med (Lond)* 2018; **79**: 253-258 [PMID: [29727228](#) DOI: [10.12968/hmed.2018.79.5.253](#)]
- 88 **Reshetnyak VI**, Maev IV, Reshetnyak TM, Zhuravel SV, Pisarev VM. Liver Diseases and the Hemostasis (Review) Part 1. Non-Cholestatic Diseases of the Liver and Hemostasis. *General Reanimatology* 2019; **15**: 74-87 [DOI: [10.15360/1813-9779-2019-5-74-87](#)]
- 89 **Reshetnyak VI**, Maev IV, Reshetnyak TM, Zhuravel SV, Pisarev VM. Liver Disease and Hemostasis (Review) Part 2. Cholestatic Liver Disease and Hemostasis. *General Reanimatology* 2019; **15**: 80-93 [DOI: [10.15360/1813-9779-2019-6-80-93](#)]
- 90 **Reshetnyak VI**, Reshetnyak TM, Zhuravel SV. The hemostasis system is normal, with liver diseases and its transplantation. Mayev IV (ed.). Riga, Latvia: LAP LAMBERT Academic Publishing; 2019. 84 p. (In Russ.) ISBN: 978-613-9-97771-0
- 91 **Reshetnyak VI**, Zhuravel SV, Kuznetsova NK, Pisarev VM, Klychnikova EV, Syutkin VE, Reshetnyak TM. The System of Blood Coagulation in Normal and in Liver Transplantation (Review). *General Reanimatology* 2018; **14**: 58-84 [DOI: [10.15360/1813-9779-2018-5-58-84](#)]
- 92 **Kowdley KV**, Emond MJ, Sadowski JA, Kaplan MM. Plasma vitamin K1 level is decreased in primary biliary cirrhosis. *Am J Gastroenterol* 1997; **92**: 2059-2061 [PMID: [9362192](#)]
- 93 **Schwabe U**, Friedrich K. [Significance of the iron and copper content of the liver for the differential diagnosis of chronic liver diseases]. *Z Gastroenterol* 1990; **28**: 353-357 [PMID: [2238766](#)]
- 94 **Lysikov YuA**. [Amino acids in human nutrition]. Experimental and clinical gastroenterology (In Russ.) 2012; **1**: 88-105
- 95 **McCullough AJ**, Mullen KD, Kalhan SC. Body cell mass and leucine metabolism in cirrhosis. *Gastroenterology* 1992; **102**: 1325-1333 [PMID: [1551538](#)]
- 96 **Changani KK**, Jalan R, Cox IJ, Ala-Korpela M, Bhakoo K, Taylor-Robinson SD, Bell JD. Evidence for altered hepatic gluconeogenesis in patients with cirrhosis using in vivo <sup>31</sup>-phosphorus magnetic resonance spectroscopy. *Gut* 2001; **49**: 557-564 [PMID: [11559655](#) DOI: [10.1136/gut.49.4.557](#)]
- 97 **Kinny-Köster B**, Bartels M, Becker S, Scholz M, Thiery J, Ceglarek U, Kaiser T. Plasma Amino Acid Concentrations Predict Mortality in Patients with End-Stage Liver Disease. *PLoS One* 2016; **11**: e0159205 [PMID: [27410482](#) DOI: [10.1371/journal.pone.0159205](#)]
- 98 **Fülster S**, Tacke M, Sandek A, Ebner N, Tschöpe C, Doehner W, Anker SD, von Haehling S. Muscle wasting in patients with chronic heart failure: results from the studies investigating co-morbidities aggravating heart failure (SICA-HF). *Eur Heart J* 2013; **34**: 512-519 [PMID: [23178647](#) DOI: [10.1093/eurheartj/ehs381](#)]
- 99 **Ebadi M**, Bhanji RA, Mazurak VC, Montano-Loza AJ. Sarcopenia in cirrhosis: from pathogenesis to interventions. *J Gastroenterol* 2019; **54**: 845-859 [PMID: [31392488](#) DOI: [10.1007/s00535-019-01605-6](#)]
- 100 **Wing SS**, Lecker SH, Jagoe RT. Proteolysis in illness-associated skeletal muscle atrophy: from pathways to networks. *Crit Rev Clin Lab Sci* 2011; **48**: 49-70 [PMID: [21699435](#) DOI: [10.3109/10408363.2011.586171](#)]
- 101 **Krähenbühl L**, Lang C, Lüdes S, Seiler C, Schäfer M, Zimmermann A, Krähenbühl S. Reduced hepatic glycogen stores in patients with liver cirrhosis. *Liver Int* 2003; **23**: 101-109 [PMID: [12654132](#) DOI: [10.1034/j.1600-0676.2003.00805.x](#)]
- 102 **Nishikawa H**, Shiraki M, Hiramatsu A, Moriya K, Hino K, Nishiguchi S. Japan Society of Hepatology guidelines for sarcopenia in liver disease (1st edition): Recommendation from the working group for creation of sarcopenia assessment criteria. *Hepatol Res* 2016; **46**: 951-963 [PMID: [27481650](#) DOI: [10.1111/hepr.12774](#)]
- 103 **Hanai T**, Shiraki M, Nishimura K, Ohnishi S, Imai K, Suetsugu A, Takai K, Shimizu M, Moriwaki H. Sarcopenia impairs prognosis of patients with liver cirrhosis. *Nutrition* 2015; **31**: 193-199 [PMID: [25441595](#) DOI: [10.1016/j.nut.2014.07.005](#)]
- 104 **Hanai T**, Shiraki M, Ohnishi S, Miyazaki T, Ideta T, Kochi T, Imai K, Suetsugu A, Takai K, Moriwaki H, Shimizu M. Rapid skeletal muscle wasting predicts worse survival in patients with liver cirrhosis. *Hepatol Res* 2016; **46**: 743-751 [PMID: [26579878](#) DOI: [10.1111/hepr.12616](#)]
- 105 **Hayashi M**, Abe K, Fujita M, Okai K, Takahashi A, Ohira H. Association between sarcopenia and osteoporosis in chronic liver disease. *Hepatol Res* 2018; **48**: 893-904 [PMID: [29734510](#) DOI: [10.1111/hepr.13192](#)]
- 106 **Hirschfeld HP**, Kinsella R, Duque G. Osteosarcopenia: where bone, muscle, and fat collide. *Osteoporos Int* 2017; **28**: 2781-2790 [PMID: [28733716](#) DOI: [10.1007/s00198-017-4151-8](#)]
- 107 **Katayama K**. Zinc and protein metabolism in chronic liver diseases. *Nutr Res* 2020; **74**: 1-9 [PMID: [31891865](#) DOI: [10.1016/j.nutres.2019.11.009](#)]
- 108 **Chang WK**, Chao YC, Tang HS, Lang HF, Hsu CT. Effects of extra-carbohydrate supplementation in the late evening on energy expenditure and substrate oxidation in patients with liver cirrhosis. *JPEN J Parenter Enteral Nutr* 1997; **21**: 96-99 [PMID: [9084012](#) DOI: [10.1177/014860719702100296](#)]
- 109 **Plank LD**, Gane EJ, Peng S, Muthu C, Mathur S, Gillanders L, McIlroy K, Donaghy AJ, McCall JL. Nocturnal nutritional supplementation improves total body protein status of patients with liver cirrhosis: a randomized 12-month trial. *Hepatology* 2008; **48**: 557-566 [PMID: [18627001](#) DOI: [10.1002/hep.22367](#)]
- 110 **Franco D**, Charra M, Jeambrun P, Belghiti J, Cortesse A, Sossler C, Bismuth H. Nutrition and immunity after peritoneovenous drainage of intractable ascites in cirrhotic patients. *Am J Surg* 1983; **146**: 652-657 [PMID: [6638272](#) DOI: [10.1016/0002-9610\(83\)90305-7](#)]
- 111 **Pavlov CS**, Damulin IV, Ivashkin VT. Hepatic encephalopathy: pathogenesis, clinical presentation, diagnostics, treatment. *Russian Journal of Gastroenterology, Hepatology, Coloproctology* 2016; **26**: 44-53 (In Russ.) [DOI: [10.22416/1382-4376-2016-26-1-44-53](#)]
- 112 **Ridola L**, Faccioli J, Nardelli S, Gioia S, Riggio O. Hepatic Encephalopathy: Diagnosis and Management. *J Transl Int Med* 2020; **8**: 210-219 [PMID: [33511048](#) DOI: [10.2478/jtim-2020-0034](#)]

- 113 **Lockwood AH.** Hepatic Encephalopathy. Ch. 12. In: Aminoff's Neurology and General Medicine. 6th Edition. Editors: Michael Aminoff, S. Andrew Josephson. Philadelphia: Academic press, Elsevier; 2021; 265-279
- 114 **Hassan EA,** Abd El-Rehim AS, Seifeldin GS, Shehata GA. Minimal hepatic encephalopathy in patients with liver cirrhosis: magnetic resonance spectroscopic brain findings versus neuropsychological changes. *Arab J Gastroenterol* 2014; **15**: 108-113 [PMID: [25459346](#) DOI: [10.1016/j.ajg.2014.09.003](#)]
- 115 **Storozhakov GI,** Nikitin IG. [Hepatic encephalopathy: pathogenetic mechanisms, clinic, treatment] (In Russ.). *Lechebnoe Delo* 2006; **1**: 13-17
- 116 **Ivashkin VT,** Nadinskaya MYu, Buyeverov AO. [Hepatic encephalopathy and methods of its metabolic correction] (In Russ.). *Digestive diseases* 2001; **1**: 25-27
- 117 **Shulpekova YuO,** Mayevskaya MV. [Special agents for parenteral nutrition for treatment of metabolic disorder at hepatic encephalopathy] (In Russ.). *Farmateka: International medical journal* 2006; **1**: 55-60
- 118 **Stewart CA,** Menon KVN, Kamath PS. Hepatic encephalopathy — diagnosis and management. Ch. 119. In: Neurological Therapeutics Principles and Practice. Second ed. Vol. 2. Ed. by J.H. Noseworthy. Abingdon: Informa Healthcare; 2006; 1432-1440
- 119 **Dasarathy S,** Hatzoglou M. Hyperammonemia and proteostasis in cirrhosis. *Curr Opin Clin Nutr Metab Care* 2018; **21**: 30-36 [PMID: [29035972](#) DOI: [10.1097/MCO.0000000000000426](#)]
- 120 **Davuluri G,** Allaway A, Thapaliya S, Rennison JH, Singh D, Kumar A, Sandlers Y, Van Wagoner DR, Flask CA, Hoppel C, Kasumov T, Dasarathy S. Hyperammonaemia-induced skeletal muscle mitochondrial dysfunction results in cataplerosis and oxidative stress. *J Physiol* 2016; **594**: 7341-7360 [PMID: [27558544](#) DOI: [10.1113/JP272796](#)]
- 121 **Butterworth RF.** Pathophysiology of brain dysfunction in hyperammonemic syndromes: The many faces of glutamine. *Mol Genet Metab* 2014; **113**: 113-117 [PMID: [25034052](#) DOI: [10.1016/j.ymgme.2014.06.003](#)]
- 122 **Holecck M,** Kandar R, Sispara L, Kovarik M. Acute hyperammonemia activates branched-chain amino acid catabolism and decreases their extracellular concentrations: different sensitivity of red and white muscle. *Amino Acids* 2011; **40**: 575-584 [PMID: [20614225](#) DOI: [10.1007/s00726-010-0679-z](#)]
- 123 **Dam G,** Ott P, Aagaard NK, Vilstrup H. Branched-chain amino acids and muscle ammonia detoxification in cirrhosis. *Metab Brain Dis* 2013; **28**: 217-220 [PMID: [23315357](#) DOI: [10.1007/s11011-013-9377-3](#)]
- 124 **Qiu J,** Thapaliya S, Runkana A, Yang Y, Tsien C, Mohan ML, Narayanan A, Egtesad B, Mozdziak PE, McDonald C, Stark GR, Welle S, Naga Prasad SV, Dasarathy S. Hyperammonemia in cirrhosis induces transcriptional regulation of myostatin by an NF- $\kappa$ B-mediated mechanism. *Proc Natl Acad Sci U S A* 2013; **110**: 18162-18167 [PMID: [24145431](#) DOI: [10.1073/pnas.1317049110](#)]
- 125 **Bhanji RA,** Moctezuma-Velazquez C, Duarte-Rojo A, Ebadi M, Ghosh S, Rose C, Montano-Loza AJ. Myosteatosis and sarcopenia are associated with hepatic encephalopathy in patients with cirrhosis. *Hepatol Int* 2018; **12**: 377-386 [PMID: [29881992](#) DOI: [10.1007/s12072-018-9875-9](#)]
- 126 **Chapman B,** Sinclair M, Gow PJ, Testro AG. Malnutrition in cirrhosis: More food for thought. *World J Hepatol* 2020; **12**: 883-896 [PMID: [33312416](#) DOI: [10.4254/wjh.v12.i11.883](#)]



Published by **Baishideng Publishing Group Inc**  
7041 Koll Center Parkway, Suite 160, Pleasanton, CA 94566, USA

**Telephone:** +1-925-3991568

**E-mail:** [bpgoffice@wjgnet.com](mailto:bpgoffice@wjgnet.com)

**Help Desk:** <https://www.f6publishing.com/helpdesk>

<https://www.wjgnet.com>

