

Tailoring the area of hepatic resection using inflow and outflow modulation

Matteo Donadon, Fabio Procopio, Guido Torzilli

Matteo Donadon, Fabio Procopio, Guido Torzilli, Liver Surgery Unit, Department of General Surgery, University of Milan School of Medicine, Humanitas Clinical and Research Center, 20089 Milan, Italy

Author contributions: Donadon M designed and wrote the manuscript; Procopio F helped with the figures; Torzilli G reviewed and approved the manuscript.

Correspondence to: Guido Torzilli, MD, PhD, Associate Professor of Surgery, Chief, Liver Surgery Unit, Department of General Surgery, University of Milan School of Medicine, Humanitas Clinical and Research Center, Via Manzoni 56, Rozzano, 20089 Milan, Italy. guido.torzilli@humanitas.it

Telephone: +39-2-82244083 Fax: +39-2-82244590

Received: August 18, 2012 Revised: December 7, 2012

Accepted: December 15, 2012

Published online: February 21, 2013

Such important technical achievements should be a fundamental part of the surgical armamentarium of the modern liver surgeon.

© 2013 Baishideng. All rights reserved.

Key words: Hepatic resection; Intraoperative ultrasound; Liver inflow; Liver outflow; Resection guidance

Donadon M, Procopio F, Torzilli G. Tailoring the area of hepatic resection using inflow and outflow modulation. *World J Gastroenterol* 2013; 19(7): 1049-1055 Available from: URL: <http://www.wjgnet.com/1007-9327/full/v19/i7/1049.htm> DOI: <http://dx.doi.org/10.3748/wjg.v19.i7.1049>

Abstract

The performance of hepatic surgery without a parenchyma-sparing strategy carries significant risks for patient survival because of the not negligible occurrence of postoperative liver failure. The key factor of modern hepatic surgery is the use of the intraoperative ultrasound (IOUS), not only to stage the disease, but more importantly to guide resection with the specific aim to maximize the sparing of the functional parenchyma. Whether in patients with hepatocellular carcinoma and underlying liver cirrhosis, or in patients with colorectal liver metastasis, IOUS allows the performance of the so-called "radical but conservative surgery", which is the pivotal factor to offer a chance of cure to an increasing proportion of patients, who until few years ago were considered only for palliative care. Using some new IOUS-guided surgical maneuvers, which are based on the liver inflow and outflow modulations, more precise anatomically subsegmental- and segmental-oriented resections can be effectively performed. The present work describes the rationale and the surgical technique for a precise tailoring of the area of hepatic resection using the most recent attainments in IOUS.

INTRODUCTION

The performance of hepatic surgery without a parenchyma-sparing strategy carries significant risks for patient survival because of the not negligible occurrence of postoperative liver failure, which is definitely related to the amount of the sacrificed parenchyma^[1,2]. Indeed, major or extended hepatic resections are independent negative prognostic factors with regard to short- and long-term outcomes^[2-7]. The key factor of modern hepatic surgery is the use of the intraoperative ultrasound (IOUS) not only to stage the disease, but more importantly to guide resection, with the specific aim of maximizing parenchyma-sparing, removing only the tumoral tissue^[8]. Whether in patients with hepatocellular carcinoma (HCC) or in patients with colorectal liver metastasis (CLM), IOUS allows the performance of the so-called "conservative but radical surgery"^[9], which is the pivotal factor to offer a chance of cure to an increasing proportion of patients, who until few years ago were considered only for palliative care. Indeed, in cases of HCC with cirrhosis the underlying liver function is generally marginal, and the prognosis of the patient might be more related to the residual liver function rather than to the pres-

ence of HCC. In such patients, the hepatectomy should always be tailored on the basis of both tumoral features and functional liver reserve. Similarly, in cases of CLM the rationale of the surgical approach described here is based on the need to minimize the rate of major or extended resections with the aim of reducing operative risk, and at the same time preserving the liver parenchyma, which could be the site for future hepatic recurrence potentially re-treated with curative intent.

OPERATIVE TECHNIQUE

The J-shaped laparotomy is the preferred incision for liver surgery, and the access into the right thoracic cavity following the 9th intercostal space is carried out to control the hepatocaval confluence. In particular, the thoracoabdominal approach is selected in obese patients, in patients with a deep chest, and during complex reoperations. Thus, the liver is partially mobilized by dividing the round and the falciform ligaments. Sometimes the coronary and triangular ligaments are also divided early to obtain enough space for IOUS. This should in fact be performed before complete mobilization of the liver to avoid any artifact made by the surgical maneuvers.

INTRAOPERATIVE ULTRASOUND

IOUS is the procedure of choice to stage disease in patients with liver tumors. It should be fully performed by the surgeon in charge for the operation rather than by the assistants, radiologists or technicians. This is because the information gathered during the exploration requires interpretation to have most impact on the surgical strategy. Thus, IOUS is mainly performed to plan the surgical strategy rather than to locate the lesions. Generally, high frequency probes (7.5-10 MHz) are recommended for IOUS, since they allow for a higher spatial resolution than those working at lower frequencies (3.5-5 MHz). However, those latter probes are very useful for the initial exploration providing a better panoramic view. Lower frequency probes are also useful for allowing contrast-enhanced IOUS. Different shapes of probes are available for intraoperative use: the linear T-shaped, the inter-digital, and micro-convex probes. The best probe is the one that ensures the optimal compromise between the volume of the probe itself, which should be minimal, the scanning windows, which should be the largest, and the stability once in contact with the liver surface. In this sense, a new micro-linear probe with trapezoid scanning windows probably represents the best compromise among all the aforementioned requirements; this probe is furthermore designed to meet the requirements for those surgical maneuvers discussed here (Figure 1). Of note, the performance of IOUS may take time, and it requires experience to be effective and beneficial^[10].

RESECTION GUIDANCE

Apart from staging, IOUS is essential to guide resection.

It is almost impossible to correctly define the hepatic segmental boundaries without IOUS, nor the boundaries of the tumor itself because of the existing wide variations in anatomy. The main advantage of IOUS-guided resection is modification of the traditional approach to liver tissue dissection, which involves dissection in vertical planes to avoid tumor exposure on the cut surface. With IOUS, the relationship between the dissection plane and the tumor edges can be followed in real time, and the direction of the dissection plane can be modified when needed. Versatile dissection planes around the tumors can avoid tumor exposure while sparing important vascular structures, thus sparing vital liver parenchyma. This approach has been recently redefined by the authors as the “radical but conservative approach”, and should be applied in liver surgery to maximize the results^[9]. Also, in patients in whom major resections should be required, IOUS allows better design of the dissection plane, leading to conservative surgery even in patients with complex tumoral presentations^[11]. Specific, and original IOUS techniques have already been developed to help the surgeon during the operation^[12-15]. The following paragraphs will focus on two crucial techniques for defining the area of resection using IOUS findings.

PLANNING OF THE SURGICAL STRATEGY

The information achieved from the preoperative imaging workup, which has an essential role in staging intra- and extra-hepatic disease, should be used to plan the surgical strategy. However, the surgical strategy should be intraoperatively defined only after IOUS exploration. The impact of IOUS on the operative decision-making, when compared with that of preoperative imaging techniques, is reported to be around 4%-7%^[16,17]. These relatively low rates may be explained because of the different surgical policies applied by the different centers as well as the different tumor types considered. Indeed, IOUS, when used in a systematic and extensive way to map the tumor nodules, allows a 3-dimensional reconstruction of the relationships between the tumor and the main intrahepatic vascular structures [glissonian pedicles and hepatic veins (HVs)], which is pivotal in planning the individualized surgical strategy for each patient. Indeed, some experienced authors reported better results in terms of IOUS accuracy^[18-21]. Some important tumor-vessel relationship rules have been developed by the authors, both for HCC and for CLM, with the aim of providing an intraoperative guide to individualize the surgical strategy and minimize parenchyma sacrifice.

Tumor in contact with a glissonian pedicle

The glissonian pedicle may be spared when in contact with an encapsulated HCC or with a CLM once the integrity of the vessel wall is confirmed at IOUS, without any sign of distal bile duct dilation. For CLM, the contact should extend for less than one-third of the pedicle circumference. In the presence of bile duct dilation, tu-

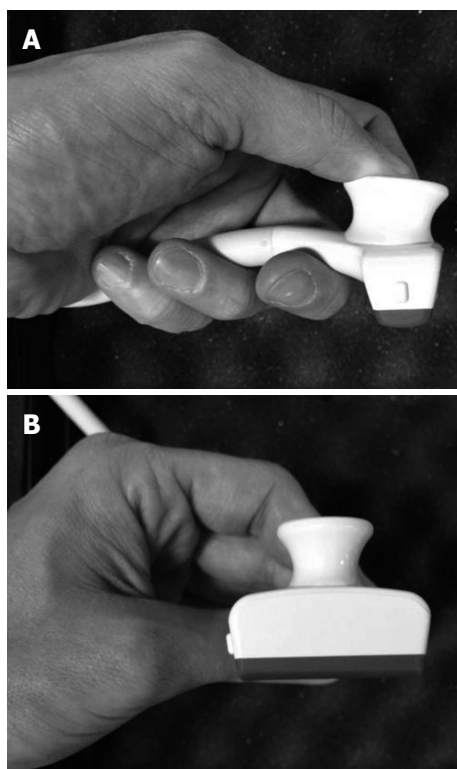


Figure 1 New probe for intraoperative ultrasound. This probe has a trapezoid scanning area, and an ergonomic shape, which help during intraoperative ultrasound-guided maneuvers. A: Lateral view; B: Front view.

mor thrombus, or invasion of the vessel wall, the pedicle must be divided^[9].

Tumor in contact with a HV

The HV may be spared when in contact with an encapsulated HCC or with CLM once the integrity of the vessel wall is confirmed at IOUS. For CLM, the contact should extent for less than two-thirds of the vessel circumference. Thus, in the presence of a tumor thrombus, invasion of the vessel wall, and wider contact the HV must be divided^[15]. However, as described below, the extension of the hepatectomy to the portion of the liver theoretically drained by the resected HV is not systematically performed, but only when accessory HVs and/or communicating veins are missing or when inversion of the portal flow is demonstrated by IOUS^[22].

INFLOW MODULATION

Initially used for tumors located in the left hemiliver^[14], the inflow modulation technique has more recently been successfully extended to any liver segment^[23], including segment 8, and even to sectional portions of the liver^[24]. Once the feeding portal branch is identified at IOUS, it can be compressed using the IOUS probe by one side of the liver, and by the finger in the opposite side with the aim to induce a transient ischemia of the portion of the liver distal to the compression site. This portion can then be marked with the electrocautery, and when released, resection can be performed. This technique is

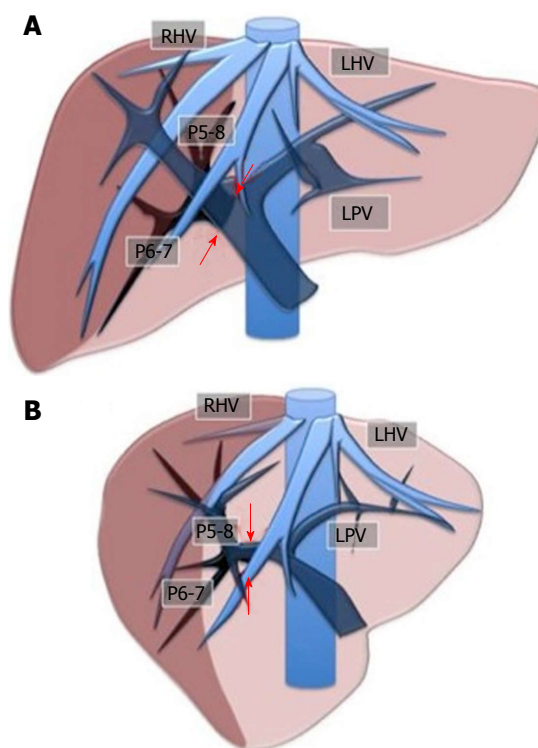


Figure 2 Layout of the liver for the inflow modulation. Ischemic demarcation of the right posterior sector by intraoperative ultrasound-guided finger compression at its origin of the right portal bifurcation. A: Front view; B: Lateral view. RHV: Right hepatic vein; LHV: Left hepatic vein; LPV: Left portal vein; P5-8: Right anterior portal branches; P6-7: Right posterior portal branches. The arrows indicate the point for the compression.

simple, fast, non-invasive, and reversible. Also, the possibility of modifying the site of the compression, and then the corresponding resection volume allows tailoring of the resection according to tumor features, and more importantly to the status of the background liver. This is of paramount importance in patients with HCC and cirrhosis, in which the functional liver reserve may be marginal. Such a technique allows for precise anatomical resection of a subsegment, segment or section of the liver. As is well-established, anatomical resection of HCC is recommended to offer a higher chance of cure^[25-29]. For segments such as segment 1 and 4 superior, for which direct compression of the feeding portal branch may not be feasible, the compression of the adjacent segmental branches allows definition of their segmental margins. Indeed, our technique can be used in a counter-compression perspective similar to the counter-staining technique reported by Takayama *et al.*^[30]. Figure 2 illustrates the layout of the liver with the compression technique applied to delineate the right posterior section, while Figures 3 and 4 show an actual case.

OUTFLOW MODULATION

The area of resection may be tailored not only using US-guided finger compression of the portal branch as described above, but also using IOUS outflow modulation. Indeed, we have already showed how to minimize

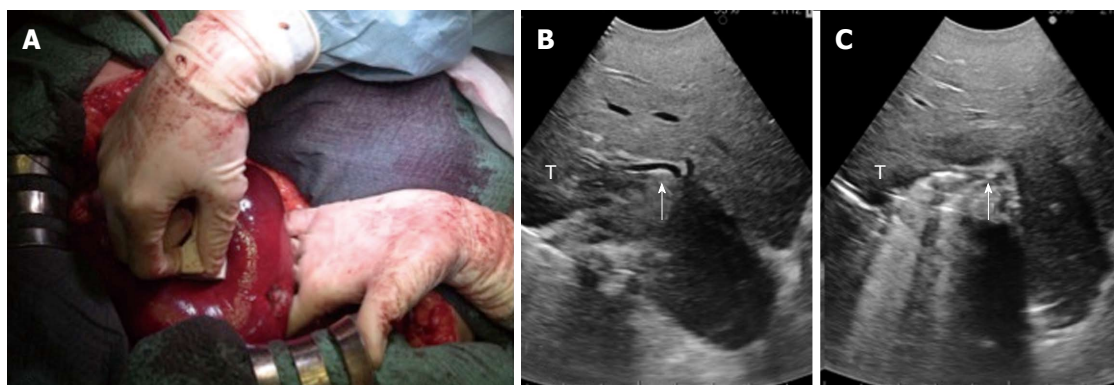


Figure 3 A case of intraoperative ultrasound-guided finger compression of segment 6. A: The portal pedicle for segment 6 is compressed by the probe in the right hand and by the finger in the left hand; B: Intraoperative ultrasound (IOUS) focused on the portal pedicle (arrow) for segment 6 before the compression; C: IOUS focused on the portal pedicle (arrow) for segment 6 during the compression. T: Tumor.

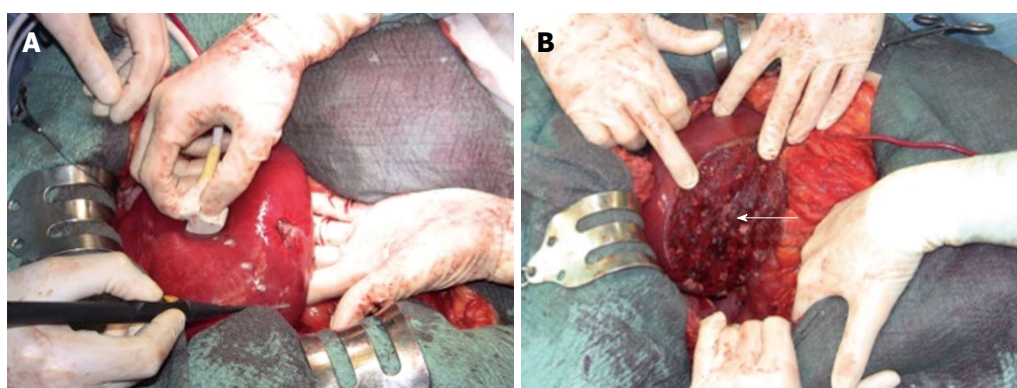


Figure 4 Demarcation of the compressed area by electrocautery. A: The operative field before the resection; B: The operative field at the end of the resection. The arrow indicates the stump of the portal pedicle for segment 6.

the sacrifice of liver parenchyma even in those patients with a tumor at the hepatocaval confluence, for which a standard major or extended hepatectomy should be indicated based on traditional criteria. In addition, we have introduced some new operations, such as minimesohepatectomy, and systematic extended right posterior sectionectomy^[22-31], which simultaneously limit the need for formal major resection, and improve the chances of resection for those patients with complex tumoral presentation. The definition of the resection area using the outflow control is based on the extensive use of IOUS flow analyses, with the aim of checking the outflow modifications once the HV that should be resected is clamped. For this purpose rather than the direct closure of the vein by a vessel loop, the US-guided fingertip compression at the caval confluence might be adequate^[32]. Certainly, the HV may already be closed by the tumor. At that case, the search is focused on at least one of the following criteria: reversal of flow direction in the peripheral portion of the compressed HV, which suggests drainage through the collateral circulation in adjacent HVs or inferior vena cava (IVC); direct detection of collaterals between the compressed HV and adjacent HV or IVC; or persistence of hepatopetal flow in the portal branches corresponding to the area drained by the compressed HV. In particular, in the case

of hepatofugal flow direction in the portal branches, the resection should not be minimal but extended to the parenchyma fed by those portal branches. The presence of hepatofugal flow in the portal branches is a clear signal of insufficient drainage of the corresponding HV. Once at least one of the aforementioned criteria has been satisfied, full mobilization of the right and left hemiliver is performed, preserving most of the posterior short HVs to minimize the risk of congestion of the residual liver. Thus, the area of resection may be marked on the liver surface using electrocautery and IOUS to define the caudal, medial and lateral limits of the parenchyma to be removed, while the surgeon's left fingertip is visualized in the most cranial portion, and it is used to mark the dissection area. Parenchyma transection is then carried out with the surgeon's left hand behind the right hemiliver with the aim of guiding resection by the right hand in real time. Figure 5 illustrates the layout of the liver with the outflow modulation technique, while Figure 6 shows an actual case.

PROBLEM OF THE SURGICAL MARGIN

One of the main criticisms of this surgical approach is the problem of the surgical margin. Both for HCC and CLM the detachment of the tumor from a spared vessel

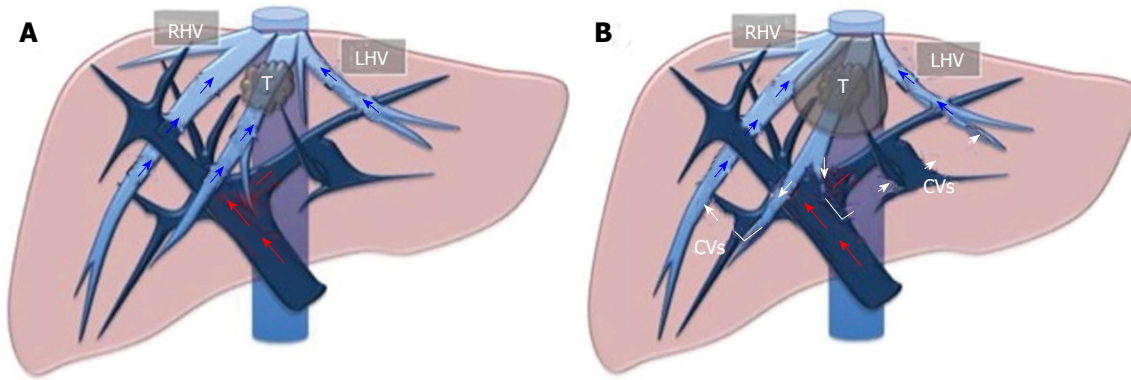


Figure 5 Layout of the liver for outflow modulation. A: A tumor in contact with the middle hepatic vein at the caval confluence; B: Once that vein is infiltrated and/or compressed, some collateral veins (CVs) shunting the flow from the middle hepatic vein territory to right hepatic vein (RHV) and/or left hepatic vein (LHV) territories can be detected. T: Tumor.

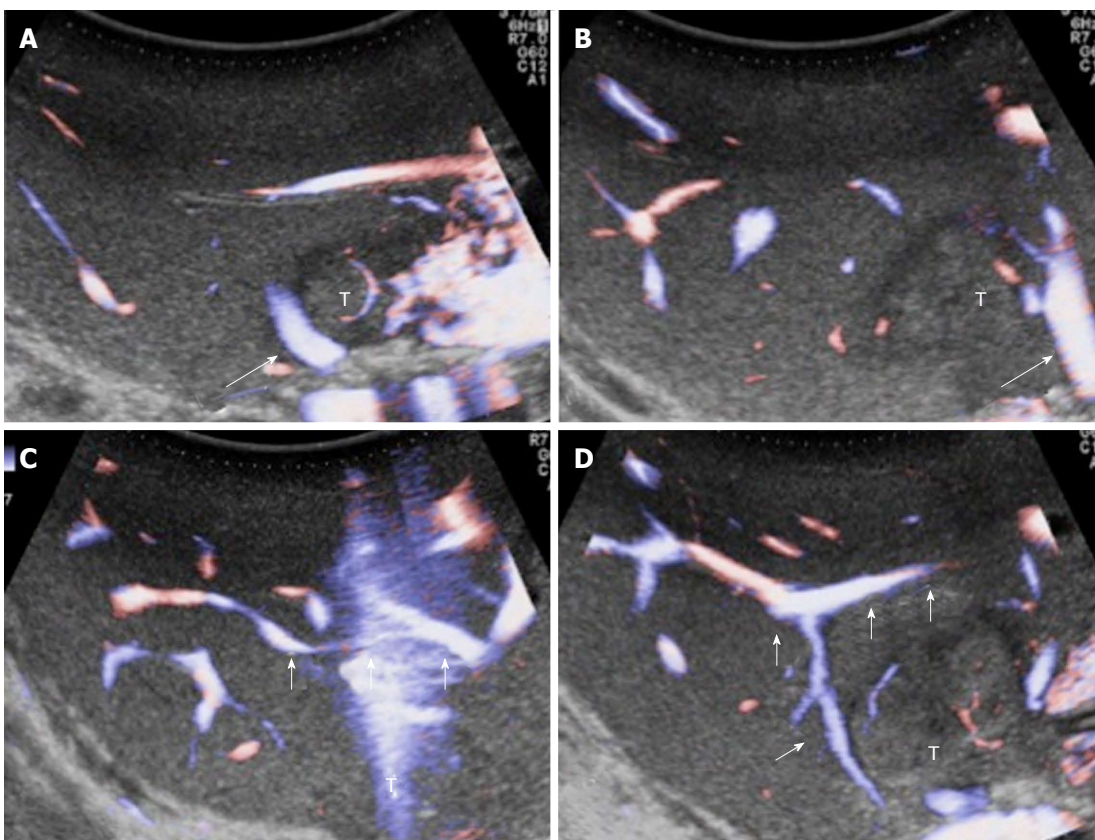


Figure 6 Intraoperative ultrasound study of communicating veins. A: A tumour located between the middle hepatic vein (MHV) (arrow) and the left hepatic vein (LHV) at their confluence into the inferior vena cava; B: The arrow indicates the LHV; C, D: Evidence of communicating veins (arrows) between the LHV and the MHV. T: Tumor.

may mean zero millimeters surgical margin, which traditionally is classified as R1 resection by the pathologist. Indeed, exposure of the tumor on the dissection plane is sometimes required to spare intrahepatic major vascular structures, which is the mainstay of our surgical policy. However, the effect of surgical margin status on survival of patients with HCC and CLM has been studied, but controversy still remains among surgeons. There is still debate about the real impact of the extent of the surgical margin once tumoral tissue is removed from the cut

surface. For HCC, some authors reported that a margin smaller than 1 cm and even 2 cm plays a negative role in terms of long-term survival, while others authors found that a 0 mm margin is acceptable^[33-37]. Also for CLM, there is no definitive agreement on the surgical margin^[38,39]. It is well known that a positive margin is associated with increased risk of recurrence, but its width does not affect survival^[40,41]. Moreover, it has been shown that patients with complex tumoral presentation treated with R1 resection may have the same long-term

survival of patients treated with R0 resection if aggressively treated with modern chemotherapy and repeated surgery^[42]. Therefore, an anticipated minimal negative surgical margin should not be used as exclusion criterion for resection of HCC or CLM. The keystone is the performance of IOUS to guide the resection with the aim of achieving complete tumor clearance to minimize the risk of non-curative surgery.

In conclusions, IOUS is the best method for staging a liver tumor, and it is certainly the best method for the surgeon to understand in real-time the liver anatomy, and the relationships between tumors and intrahepatic vessels, thus allowing effective surgical operations. IOUS guidance allows for expanding indications offering the chance of cure to a greater proportion of patients, who would otherwise be excluded from the surgical program or submitted to more traditional but more risky operations. A precise tailoring of the area of hepatic resection using inflow and outflow modulation should be part of the surgical armamentarium of the modern liver surgeon.

REFERENCES

- Vauthey JN, Pawlik TM, Abdalla EK, Arens JF, Nemr RA, Wei SH, Kenamer DL, Ellis LM, Curley SA. Is extended hepatectomy for hepatobiliary malignancy justified? *Ann Surg* 2004; **239**: 722-730; discussion 730-732 [PMID: 15082977 DOI: 10.1097/01.sla.0000124385.83887.d5]
- Schroeder RA, Marroquin CE, Bute BP, Khuri S, Henderson WG, Kuo PC. Predictive indices of morbidity and mortality after liver resection. *Ann Surg* 2006; **243**: 373-379 [PMID: 16495703 DOI: 10.1097/01.sla.0000201483.95911.08]
- Balzan S, Belghiti J, Farges O, Ogata S, Sauvanet A, Delefosse D, Durand F. The "50-50 criteria" on postoperative day 5: an accurate predictor of liver failure and death after hepatectomy. *Ann Surg* 2005; **242**: 824-828; discussion 828-829 [PMID: 16327492 DOI: 10.1097/01.sla.0000189131.90876.9e]
- Cucchetti A, Ercolani G, Cescon M, Ravaoli M, Zanello M, Del Gaudio M, Lauro A, Vivarelli M, Grazi GL, Pinna AD. Recovery from liver failure after hepatectomy for hepatocellular carcinoma in cirrhosis: meaning of the model for end-stage liver disease. *J Am Coll Surg* 2006; **203**: 670-676 [PMID: 17084328 DOI: 10.1016/j.jamcollsurg.2006.06.018]
- Mullen JT, Ribero D, Reddy SK, Donadon M, Zorzi D, Gautam S, Abdalla EK, Curley SA, Capussotti L, Clary BM, Vauthey JN. Hepatic insufficiency and mortality in 1,059 noncirrhotic patients undergoing major hepatectomy. *J Am Coll Surg* 2007; **204**: 854-62; discussion 862-864 [PMID: 17481498 DOI: 10.1016/j.jamcollsurg.2006.12.032]
- Wei AC, Tung-Ping Poon R, Fan ST, Wong J. Risk factors for perioperative morbidity and mortality after extended hepatectomy for hepatocellular carcinoma. *Br J Surg* 2003; **90**: 33-41 [PMID: 12520572 DOI: 10.1002/bjs.4018]
- Karanjia ND, Lordan JT, Quiney N, Fawcett WJ, Worthington TR, Remington J. A comparison of right and extended right hepatectomy with all other hepatic resections for colorectal liver metastases: a ten-year study. *Eur J Surg Oncol* 2009; **35**: 65-70 [PMID: 18222623 DOI: 10.1016/j.ejso.2007.12.002]
- Torzilli G, Makuuchi M. Intraoperative ultrasonography in liver cancer. *Surg Oncol Clin N Am* 2003; **12**: 91-103 [PMID: 12735132 DOI: 10.1016/S1055-3207(02)00084-4]
- Torzilli G, Montorsi M, Donadon M, Palmisano A, Del Fabbro D, Gambetti A, Olivari N, Makuuchi M. "Radical but conservative" is the main goal for ultrasonography-guided liver resection: prospective validation of this approach. *J Am Coll Surg* 2005; **201**: 517-528 [PMID: 16183489 DOI: 10.1016/j.jamcollsurg.2005.04.026]
- Donadon M, Torzilli G. Intraoperative ultrasound of the liver. *AJR Am J Roentgenol* 2012; **198**: W398; author reply W399 [PMID: 22451581]
- Torzilli G, Procopio F, Botea F, Marconi M, Del Fabbro D, Donadon M, Palmisano A, Spinelli A, Montorsi M. One-stage ultrasonographically guided hepatectomy for multiple bilobar colorectal metastases: a feasible and effective alternative to the 2-stage approach. *Surgery* 2009; **146**: 60-71 [PMID: 19541011 DOI: 10.1016/j.surg.2009.02.017]
- Makuuchi M, Hasegawa H, Yamazaki S. Ultrasonically guided subsegmentectomy. *Surg Gynecol Obstet* 1985; **161**: 346-350 [PMID: 2996162]
- Makuuchi M, Hasegawa H, Yamazaki S, Takayasu K. Four new hepatectomy procedures for resection of the right hepatic vein and preservation of the inferior right hepatic vein. *Surg Gynecol Obstet* 1987; **164**: 68-72 [PMID: 3026059]
- Torzilli G, Makuuchi M. Ultrasound-guided finger compression in liver subsegmentectomy for hepatocellular carcinoma. *Surg Endosc* 2004; **18**: 136-139 [PMID: 14625736 DOI: 10.1007/s00464-003-9024-x]
- Torzilli G, Montorsi M, Del Fabbro D, Palmisano A, Donadon M, Makuuchi M. Ultrasonographically guided surgical approach to liver tumours involving the hepatic veins close to the caval confluence. *Br J Surg* 2006; **93**: 1238-1246 [PMID: 16953487 DOI: 10.1002/bjs.5321]
- Cerwenka H, Raith J, Bacher H, Werkgartner G, el-Shabrawi A, Kornprat P, Mischinger HJ. Is intraoperative ultrasonography during partial hepatectomy still necessary in the age of magnetic resonance imaging? *Hepatogastroenterology* 2003; **50**: 1539-1541 [PMID: 14571781]
- Jarnagin WR, Bach AM, Winston CB, Hann LE, Heffernan N, Loumeau T, DeMatteo RP, Fong Y, Blumgart LH. What is the yield of intraoperative ultrasonography during partial hepatectomy for malignant disease? *J Am Coll Surg* 2001; **192**: 577-583 [PMID: 11333094 DOI: 10.1016/S1072-7515(01)00794-3]
- Machi J, Sigel B, Zaren HA, Kurohiji T, Yamashita Y. Operative ultrasonography during hepatobiliary and pancreatic surgery. *World J Surg* 1993; **17**: 640-645; discussion 645-646 [PMID: 8273386 DOI: 10.1007/BF01659130]
- Takigawa Y, Sugawara Y, Yamamoto J, Shimada K, Yamasaki S, Kosuge T, Makuuchi M. New lesions detected by intraoperative ultrasound during liver resection for hepatocellular carcinoma. *Ultrasound Med Biol* 2001; **27**: 151-156 [PMID: 11316523 DOI: 10.1016/S0301-5629(00)00346-X]
- Ozsunar Y, Skjoldbye B, Court-Payen M, Karstrup S, Burcharth F. Impact of intraoperative ultrasonography on surgical treatment of liver tumours. *Acta Radiol* 2000; **41**: 97-101 [PMID: 10665881 DOI: 10.1034/j.1600-0455.2000.041001097.x]
- Torzilli G, Botea F, Procopio F, Donadon M, Balzarini L, Lutman F, Calliada F, Montorsi M. Use of contrast-enhanced intraoperative ultrasonography during liver surgery for colorectal cancer liver metastases - Its impact on operative outcome. Analysis of a prospective cohort study. *Eur J Cancer* 2008; **6**: 16-23 [DOI: 10.1016/j.ejcsup.2008.06.004]
- Torzilli G, Palmisano A, Procopio F, Cimino M, Botea F, Donadon M, Del Fabbro D, Montorsi M. A new systematic small for size resection for liver tumors invading the middle hepatic vein at its caval confluence: mini-mesohepatectomy. *Ann Surg* 2010; **251**: 33-39 [PMID: 19858707 DOI: 10.1097/SLA.0b013e3181b61db9]
- Torzilli G, Procopio F, Cimino M, Del Fabbro D, Palmisano A, Donadon M, Montorsi M. Anatomical segmental and subsegmental resection of the liver for hepatocellular carcinoma: a new approach by means of ultrasound-guided vessel compression. *Ann Surg* 2010; **251**: 229-235 [PMID: 19838106 DOI: 10.1097/SLA.0b013e3181b7fdcd]
- Torzilli G, Procopio F, Palmisano A, Cimino M, Del Fabbro

- D, Donadon M, Montorsi M. New technique for defining the right anterior section intraoperatively using ultrasound-guided finger counter-compression. *J Am Coll Surg* 2009; **209**: e8-11 [PMID: 19632590 DOI: 10.1016/j.jamcollsurg.2009.05.014]
- 25 Hasegawa K, Kokudo N, Imamura H, Matsuyama Y, Aoki T, Minagawa M, Sano K, Sugawara Y, Takayama T, Makuuchi M. Prognostic impact of anatomic resection for hepatocellular carcinoma. *Ann Surg* 2005; **242**: 252-259 [PMID: 16041216 DOI: 10.1097/01.sla.0000171307.37401.db]
- 26 Wakai T, Shirai Y, Sakata J, Kaneko K, Cruz PV, Akazawa K, Hatakeyama K. Anatomic resection independently improves long-term survival in patients with T1-T2 hepatocellular carcinoma. *Ann Surg Oncol* 2007; **14**: 1356-1365 [PMID: 17252289 DOI: 10.1245/s10434-006-9318-z]
- 27 Regimbeau JM, Kianmanesh R, Farges O, Dondero F, Sauvanet A, Belghiti J. Extent of liver resection influences the outcome in patients with cirrhosis and small hepatocellular carcinoma. *Surgery* 2002; **131**: 311-317 [PMID: 11894036 DOI: 10.1067/msy.2002.121892]
- 28 Cho YB, Lee KU, Lee HW, Cho EH, Yang SH, Cho JY, Yi NJ, Suh KS. Anatomic versus non-anatomic resection for small single hepatocellular carcinomas. *Hepatogastroenterology* 2007; **54**: 1766-1769 [PMID: 18019714]
- 29 Eguchi S, Kanematsu T, Arai S, Okazaki M, Okita K, Omata M, Ikai I, Kudo M, Kojiro M, Makuuchi M, Monden M, Matsuyama Y, Nakanuma Y, Takayasu K. Comparison of the outcomes between an anatomical subsegmentectomy and a non-anatomical minor hepatectomy for single hepatocellular carcinomas based on a Japanese nationwide survey. *Surgery* 2008; **143**: 469-475 [PMID: 18374043 DOI: 10.1016/j.surg.2007.12.003]
- 30 Takayama T, Makuuchi M, Watanabe K, Kosuge T, Takayasu K, Yamazaki S, Hasegawa H. A new method for mapping hepatic subsegment: counterstaining identification technique. *Surgery* 1991; **109**: 226-229 [PMID: 1846986]
- 31 Torzilli G, Donadon M, Marconi M, Botea F, Palmisano A, Del Fabbro D, Procopio F, Montorsi M. Systematic extended right posterior sectionectomy: a safe and effective alternative to right hepatectomy. *Ann Surg* 2008; **247**: 603-611 [PMID: 18362622 DOI: 10.1097/SLA.0b013e31816387d7]
- 32 Torzilli G, Donadon M, Palmisano A, Del Fabbro D, Spinelli A, Makuuchi M, Montorsi M. Back-flow bleeding control during resection of right-sided liver tumors by means of ultrasound-guided finger compression of the right hepatic vein at its caval confluence. *Hepatogastroenterology* 2007; **54**: 1364-1367 [PMID: 17708255]
- 33 Chau GY, Lui WY, Tsay SH, King KL, Loong CC, Chiu JH, Wu CW, P'eng FK. Prognostic significance of surgical margin in hepatocellular carcinoma resection: an analysis of 165 Childs' A patients. *J Surg Oncol* 1997; **66**: 122-126 [PMID: 9354168 DOI: 10.1002/(SICI)1096-9098(199710)66]
- 34 Shi M, Guo RP, Lin XJ, Zhang YQ, Chen MS, Zhang CQ, Lau WY, Li JQ. Partial hepatectomy with wide versus narrow resection margin for solitary hepatocellular carcinoma: a prospective randomized trial. *Ann Surg* 2007; **245**: 36-43 [PMID: 17197963 DOI: 10.1097/01.sla.0000231758.07868.71]
- 35 Ochiai T, Takayama T, Inoue K, Yamamoto J, Shimada K, Kosuge T, Yamazaki S, Makuuchi M. Hepatic resection with and without surgical margins for hepatocellular carcinoma in patients with impaired liver function. *Hepatogastroenterology* 1999; **46**: 1885-1889 [PMID: 10430364]
- 36 Poon RT, Fan ST, Ng IO, Wong J. Significance of resection margin in hepatectomy for hepatocellular carcinoma: A critical reappraisal. *Ann Surg* 2000; **231**: 544-551 [PMID: 10749616 DOI: 10.1097/0000658-200004000-00014]
- 37 Matsui Y, Terakawa N, Sato S, Kaibori M, Kitade H, Takai S, Kwon AH, Kamiyama Y. Postoperative outcomes in patients with hepatocellular carcinomas resected with exposure of the tumor surface: clinical role of the no-margin resection. *Arch Surg* 2007; **142**: 596-602; discussion 603 [PMID: 17638795 DOI: 10.1001/archsurg.142.7.596]
- 38 Elias D, Cavalcanti A, Sabourin JC, Pignon JP, Ducreux M, Lasser P. Results of 136 curative hepatectomies with a safety margin of less than 10 mm for colorectal metastases. *J Surg Oncol* 1998; **69**: 88-93 [PMID: 9808511 DOI: 10.1002/(SICI)1096-9098(199810)69]
- 39 Nuzzo G, Giulante F, Ardito F, Vellone M, Giovannini I, Federico B, Vecchio FM. Influence of surgical margin on type of recurrence after liver resection for colorectal metastases: a single-center experience. *Surgery* 2008; **143**: 384-393 [PMID: 18291260 DOI: 10.1016/j.surg.2007.09.038]
- 40 Pawlik TM, Scoggins CR, Zorzi D, Abdalla EK, Andres A, Eng C, Curley SA, Loyer EM, Muratore A, Mentha G, Capusotti L, Vauthey JN. Effect of surgical margin status on survival and site of recurrence after hepatic resection for colorectal metastases. *Ann Surg* 2005; **241**: 715-722, discussion 722-724 [PMID: 15849507 DOI: 10.1097/01.sla.0000160703.75808.7d]
- 41 Kokudo N, Miki Y, Sugai S, Yanagisawa A, Kato Y, Sakamoto Y, Yamamoto J, Yamaguchi T, Muto T, Makuuchi M. Genetic and histological assessment of surgical margins in resected liver metastases from colorectal carcinoma: minimum surgical margins for successful resection. *Arch Surg* 2002; **137**: 833-840 [PMID: 12093342 DOI: 10.1001/archsurg.137.7.833]
- 42 de Haas RJ, Wicherts DA, Flores E, Azoulay D, Castaing D, Adam R. R1 resection by necessity for colorectal liver metastases: is it still a contraindication to surgery? *Ann Surg* 2008; **248**: 626-637 [PMID: 18936576 DOI: 10.1097/SLA.0b013e31818a07f1]

P-Reviewer Ooi LL S-Editor Gou SX
L-Editor Cant MR E-Editor Xiong L

