

# World Journal of *Gastroenterology*

*World J Gastroenterol* 2017 April 14; 23(14): 2453-2634



**EDITORIAL**

- 2453 Noninvasive molecular analysis of *Helicobacter pylori*: Is it time for tailored first-line therapy?

*Ierardi E, Giorgio F, Iannone A, Losurdo G, Principi M, Barone M, Pisani A, Di Leo A*

**REVIEW**

- 2459 Pathogenesis and clinical spectrum of primary sclerosing cholangitis

*Gidwaney NG, Pawa S, Das KM*

- 2470 Biliary tract cancer stem cells - translational options and challenges

*Mayr C, Ocker M, Ritter M, Pichler M, Neureiter D, Kiesslich T*

**MINIREVIEWS**

- 2483 Potential role of nutraceutical compounds in inflammatory bowel disease

*Larussa T, Imeneo M, Luzzza F*

- 2493 Unusual gastric tumors and tumor-like lesions: Radiological with pathological correlation and literature review

*Lin YM, Chiu NC, Li AFY, Liu CA, Chou YH, Chiou YY*

- 2505 New progress in roles of nitric oxide during hepatic ischemia reperfusion injury

*Zhang YQ, Ding N, Zeng YF, Xiang YY, Yang MW, Hong FF, Yang SL*

**ORIGINAL ARTICLE****Basic Study**

- 2511 Berberine displays antitumor activity in esophageal cancer cells *in vitro*

*Jiang SX, Qi B, Yao WJ, Gu CW, Wei XF, Zhao Y, Liu YZ, Zhao BS*

**Case Control Study**

- 2519 Clinical utility of the platelet-lymphocyte ratio as a predictor of postoperative complications after radical gastrectomy for clinical T2-4 gastric cancer

*Inaoka K, Kanda M, Uda H, Tanaka Y, Tanaka C, Kobayashi D, Takami H, Iwata N, Hayashi M, Niwa Y, Yamada S, Fujii T, Sugimoto H, Murotani K, Fujiwara M, Kodera Y*

- 2527 Colors of vegetables and fruits and the risks of colorectal cancer

*Lee J, Shin A, Oh JH, Kim J*

**Retrospective Cohort Study**

- 2539 Impact of vitamin D on the hospitalization rate of Crohn's disease patients seen at a tertiary care center  
*Venkata KVR, Arora SS, Xie FL, Malik TA*

- 2545 Barcelona clinic liver cancer nomogram and others staging/scoring systems in a French hepatocellular carcinoma cohort  
*Adhoute X, Pénaranda G, Raoul JL, Edeline J, Blanc JF, Pol B, Campanile M, Perrier H, Bayle O, Monnet O, Beaurain P, Muller C, Castellani P, Le Treut YP, Bronowicki JP, Bourlière M*

**Retrospective Study**

- 2556 Laparoscopic approach to suspected T1 and T2 gallbladder carcinoma  
*Ome Y, Hashida K, Yokota M, Nagahisa Y, Okabe M, Kawamoto K*
- 2566 Clinical characteristics of peptic ulcer perforation in Korea  
*Yang YJ, Bang CS, Shin SP, Park TY, Suk KT, Baik GH, Kim DJ*
- 2575 Effects of omeprazole in improving concurrent chemoradiotherapy efficacy in rectal cancer  
*Zhang JL, Liu M, Yang Q, Lin SY, Shan HB, Wang HY, Xu GL*

**Clinical Trials Study**

- 2585 *PIK3CA* gene mutations in Northwest Chinese esophageal squamous cell carcinoma  
*Liu SY, Chen W, Chughtai EA, Qiao Z, Jiang JT, Li SM, Zhang W, Zhang J*
- 2592 Endothelial progenitor cells in peripheral blood may serve as a biological marker to predict severe acute pancreatitis  
*Ha XQ, Song YJ, Zhao HB, Ta WW, Gao HW, Feng QS, Dong JZ, Deng ZY, Fan HY, Peng JH, Yang ZH, Zhao Y*
- 2601 Comparative study of ROR2 and WNT5a expression in squamous/adenosquamous carcinoma and adenocarcinoma of the gallbladder  
*Wu ZC, Xiong L, Wang LX, Miao XY, Liu ZR, Li DQ, Zou Q, Liu KJ, Zhao H, Yang ZL*

**Observational Study**

- 2613 Serum omentin and vaspin levels in cirrhotic patients with and without portal vein thrombosis  
*Kukla M, Waluga M, Żorniak M, Berdowska A, Wosiewicz P, Sawczyn T, Buldak RJ, Ochman M, Ziora K, Krzemiński T, Hartleb M*
- 2625 Upper gastrointestinal cancer burden in Hebei Province, China: A population-based study  
*Li DJ, Liang D, Song GH, Li YW, Wen DG, Jin J, He YT*

## ABOUT COVER

Editorial board member of *World Journal of Gastroenterology*, Vicente Lorenzo-Zuniga, MD, PhD, Associate Professor, Chief Doctor, Staff Physician, Endoscopy Unit, Department of Gastroenterology, Hospital Universitari Germans Trias i Pujol/CIBERehd, Badalona 08916, Spain

## AIMS AND SCOPE

*World Journal of Gastroenterology* (*World J Gastroenterol*, *WJG*, print ISSN 1007-9327, online ISSN 2219-2840, DOI: 10.3748) is a peer-reviewed open access journal. *WJG* was established on October 1, 1995. It is published weekly on the 7<sup>th</sup>, 14<sup>th</sup>, 21<sup>st</sup>, and 28<sup>th</sup> each month. The *WJG* Editorial Board consists of 1375 experts in gastroenterology and hepatology from 68 countries.

The primary task of *WJG* is to rapidly publish high-quality original articles, reviews, and commentaries in the fields of gastroenterology, hepatology, gastrointestinal endoscopy, gastrointestinal surgery, hepatobiliary surgery, gastrointestinal oncology, gastrointestinal radiation oncology, gastrointestinal imaging, gastrointestinal interventional therapy, gastrointestinal infectious diseases, gastrointestinal pharmacology, gastrointestinal pathophysiology, gastrointestinal pathology, evidence-based medicine in gastroenterology, pancreatology, gastrointestinal laboratory medicine, gastrointestinal molecular biology, gastrointestinal immunology, gastrointestinal microbiology, gastrointestinal genetics, gastrointestinal translational medicine, gastrointestinal diagnostics, and gastrointestinal therapeutics. *WJG* is dedicated to become an influential and prestigious journal in gastroenterology and hepatology, to promote the development of above disciplines, and to improve the diagnostic and therapeutic skill and expertise of clinicians.

## INDEXING/ABSTRACTING

*World Journal of Gastroenterology* (*WJG*) is now indexed in Current Contents<sup>®</sup>/Clinical Medicine, Science Citation Index Expanded (also known as SciSearch<sup>®</sup>), Journal Citation Reports<sup>®</sup>, Index Medicus, MEDLINE, PubMed, PubMed Central, Digital Object Identifier, and Directory of Open Access Journals. The 2015 edition of Journal Citation Reports<sup>®</sup> released by Thomson Reuters (ISI) cites the 2015 impact factor for *WJG* as 2.787 (5-year impact factor: 2.848), ranking *WJG* as 38 among 78 journals in gastroenterology and hepatology (quartile in category Q2).

## FLYLEAF

### I-IX Editorial Board

## EDITORS FOR THIS ISSUE

Responsible Assistant Editor: *Xiang Li*  
Responsible Electronic Editor: *Cai-Hong Wang*  
Proofing Editor-in-Chief: *Lian-Sheng Ma*

Responsible Science Editor: *Yuan Qi*  
Proofing Editorial Office Director: *Jin-Lei Wang*

NAME OF JOURNAL  
*World Journal of Gastroenterology*

ISSN  
ISSN 1007-9327 (print)  
ISSN 2219-2840 (online)

LAUNCH DATE  
October 1, 1995

FREQUENCY  
Weekly

### EDITORS-IN-CHIEF

**Damian Garcia-Olmo, MD, PhD, Doctor, Professor, Surgeon**, Department of Surgery, Universidad Autonoma de Madrid; Department of General Surgery, Fundacion Jimenez Diaz University Hospital, Madrid 28040, Spain

**Stephen C Strom, PhD, Professor**, Department of Laboratory Medicine, Division of Pathology, Karolinska Institutet, Stockholm 141-86, Sweden

**Andrzej S Tarnawski, MD, PhD, DSc (Med), Professor of Medicine, Chief Gastroenterology**, VA Long Beach Health Care System, University of California, Irvine, CA, 5901 E. Seventh Str., Long Beach,

CA 90822, United States

### EDITORIAL BOARD MEMBERS

All editorial board members resources online at <http://www.wjgnet.com/1007-9327/editorialboard.htm>

### EDITORIAL OFFICE

Jin-Lei Wang, Director  
Yuan Qi, Vice Director  
Ze-Mao Gong, Vice Director  
*World Journal of Gastroenterology*  
Baishideng Publishing Group Inc  
8226 Regency Drive,  
Pleasanton, CA 94588, USA  
Telephone: +1-925-2238242  
Fax: +1-925-2238243  
E-mail: [editorialoffice@wjgnet.com](mailto:editorialoffice@wjgnet.com)  
Help Desk: <http://www.f6publishing.com/helpdesk>  
<http://www.wjgnet.com>

### PUBLISHER

Baishideng Publishing Group Inc  
8226 Regency Drive,  
Pleasanton, CA 94588, USA  
Telephone: +1-925-2238242  
Fax: +1-925-2238243  
E-mail: [bpgoffice@wjgnet.com](mailto:bpgoffice@wjgnet.com)  
Help Desk: <http://www.f6publishing.com/helpdesk>

<http://www.wjgnet.com>

PUBLICATION DATE  
April 14, 2017

### COPYRIGHT

© 2017 Baishideng Publishing Group Inc. Articles published by this Open-Access journal are distributed under the terms of the Creative Commons Attribution Non-commercial License, which permits use, distribution, and reproduction in any medium, provided the original work is properly cited, the use is non commercial and is otherwise in compliance with the license.

### SPECIAL STATEMENT

All articles published in journals owned by the Baishideng Publishing Group (BPG) represent the views and opinions of their authors, and not the views, opinions or policies of the BPG, except where otherwise explicitly indicated.

### INSTRUCTIONS TO AUTHORS

Full instructions are available online at <http://www.wjgnet.com/bpg/gerinfo/204>

ONLINE SUBMISSION  
<http://www.f6publishing.com>

## Basic Study

# Berberine displays antitumor activity in esophageal cancer cells *in vitro*

Shu-Xian Jiang, Bo Qi, Wen-Jian Yao, Cheng-Wei Gu, Xiu-Feng Wei, Yi Zhao, Yu-Zhen Liu, Bao-Sheng Zhao

Shu-Xian Jiang, Bo Qi, Wen-Jian Yao, Cheng-Wei Gu, Xiu-Feng Wei, Yi Zhao, Yu-Zhen Liu, Bao-Sheng Zhao, Department of Thoracic Surgery, The First Affiliated Hospital of Xinxiang Medical University, Weihui 453100, Henan Province, China

**Author contributions:** Jiang SX and Qi B contributed equally to this work; Zhao Y, Liu YZ and Zhao BS contributed to study conception and design; Jiang SX, Qi B and Yao WJ designed the methods and performed the majority of experiments; Gu CW and Wei XF contributed to revision for intellectual content; Liu YZ interpreted the results and wrote the paper.

**Supported by** Key Technologies R&D Program of Science and Technology Commission of Henan Province, No. 52102310110 to Zhao BS; and Key Science and Technique Fund of Xinxiang, No. ZG15018 to Zhao BS.

**Institutional review board statement:** This study was reviewed and approved by the First Affiliated Hospital of Xinxiang Medical University Institutional Review Board.

**Conflict-of-interest statement:** The authors declare that no conflict of interest exists in this study.

**Data sharing statement:** No additional data are available.

**Open-Access:** This article is an open-access article which was selected by an in-house editor and fully peer-reviewed by external reviewers. It is distributed in accordance with the Creative Commons Attribution Non Commercial (CC BY-NC 4.0) license, which permits others to distribute, remix, adapt, build upon this work non-commercially, and license their derivative works on different terms, provided the original work is properly cited and the use is non-commercial. See: <http://creativecommons.org/licenses/by-nc/4.0/>

**Manuscript source:** Unsolicited manuscript

**Correspondence to:** Bao-Sheng Zhao, MD, Professor, Chief, Department of Thoracic Surgery, The First Affiliated Hospital of Xinxiang Medical University, Weihui 453100, Henan Province, China. [zhaobsn@126.com](mailto:zhaobsn@126.com)

Telephone: +86-373-4404718

Fax: +86-373-4402573

Received: November 16, 2016

Peer-review started: November 17, 2016

First decision: December 19, 2016

Revised: January 6, 2017

Accepted: March 2, 2017

Article in press: March 2, 2017

Published online: April 14, 2017

## Abstract

### AIM

To investigate the effects of berberine on esophageal cancer (EC) cells and its molecular mechanisms.

### METHODS

Human esophageal squamous cell carcinoma cell line KYSE-70 and esophageal adenocarcinoma cell line SKGT4 were used. The effects of berberine on cell proliferation were evaluated using the 3-(4,5-dimethylthiazol-2-yl)-2,5-diphenyltetrazolium bromide (MTT) assay. For cell cycle progression, KYSE-70 cells were stained with propidium iodide (PI) staining buffer (10 mg/mL PI and 100 mg/mL RNase A) for 30 min and cell cycle was analyzed using a BD FACSCalibur flow cytometer. For apoptosis assay, cells were stained with an Annexin V-FITC/PI apoptosis detection kit. The rate of apoptotic cells was analyzed using a dual laser flow cytometer and estimated using BD ModFit software. Levels of proteins related to cell cycle and apoptosis were examined by western blotting.

### RESULTS

Berberine treatment resulted in growth inhibition of KYSE-70 and SKGT4 cells in a dose-dependent and time-dependent manner. KYSE-70 cells were more



susceptible to the inhibitory activities of berberine than SKGT4 cells were. In KYSE-70 cells treated with 50  $\mu\text{mol/L}$  berberine for 48 h, the number of cells in G<sub>2</sub>/M phase ( $25.94\% \pm 5.01\%$ ) was significantly higher than that in the control group ( $9.77\% \pm 1.28\%$ ,  $P < 0.01$ ), and berberine treatment resulted in p21 up-regulation in KYSE-70 cells. Flow cytometric analyses showed that berberine significantly augmented the KYSE-70 apoptotic population at 12 and 24 h post-treatment, when compared with control cells ( $0.83\%$  vs  $43.78\%$  at 12 h,  $P < 0.05$ ;  $0.15\%$  vs  $81.86\%$  at 24 h,  $P < 0.01$ ), and berberine-induced apoptotic effect was stronger at 24 h compared with 12 h. Western blotting showed that berberine inhibited the phosphorylation of Akt, mammalian target of rapamycin and p70S6K, and enhanced AMP-activated protein kinase phosphorylation in a sustained manner.

### CONCLUSION

Berberine is an inhibitor of human EC cell growth and could be considered as a potential drug for the treatment of EC patients.

**Key words:** Berberine; Esophageal cancer; Antitumor activity; Proliferation; Cell cycle; Apoptosis

© **The Author(s) 2017.** Published by Baishideng Publishing Group Inc. All rights reserved.

**Core tip:** Initial diagnosis of many esophageal cancer (EC) patients is made at an advanced stage of the disease, making surgery an undesirable option. Although advances in chemotherapy have been achieved, serious adverse effects usually limit clinical application. Exploring non-invasive strategies to prevent the growth of EC is urgently needed. The current research showed that berberine is an inhibitor of human EC cell growth and could be considered as a potential source of drugs for the treatment of EC patients.

Jiang SX, Qi B, Yao WJ, Gu CW, Wei XF, Zhao Y, Liu YZ, Zhao BS. Berberine displays antitumor activity in esophageal cancer cells *in vitro*. *World J Gastroenterol* 2017; 23(14): 2511-2518 Available from: URL: <http://www.wjgnet.com/1007-9327/full/v23/i14/2511.htm> DOI: <http://dx.doi.org/10.3748/wjg.v23.i14.2511>

## INTRODUCTION

Esophageal cancer (EC) is the sixth most common malignant gastrointestinal carcinoma worldwide. More than 50% of the global incidence of EC is in China<sup>[1]</sup>. A report published in 2016 shows that there are an 477900 and 375000 estimated new EC cases and deaths, respectively, in China<sup>[2]</sup>. Histologically, EC is divided into two major types: esophageal squamous cell carcinoma (ESCC) and esophageal

adenocarcinoma (EAC). More than 90% of EC in China is ESCC. Although advances have been achieved in surgery and chemotherapy, the 5-year survival rate of EC in China is only 19.9%<sup>[3]</sup>. Esophagostomy is so far the only potentially curative approach for EC, but many patients are at an advanced stage of disease during initial diagnosis, thus ruling them out from surgery. Therefore, there is a critical need to develop alternative and novel approaches in EC therapy.

Berberine is a quaternary ammonium salt derived from Ranunculaceae and Papaveraceae families of plants. Apart from a broad range of bioactivities, such as anti-inflammatory, antibacterial and antidiabetic actions, accumulating studies have revealed that berberine exhibits antitumor properties by interfering with the multiple features of tumorigenesis and tumor development<sup>[4]</sup>. The antitumor activity of berberine is mainly mediated through the inhibition of cancer cell proliferation by inducing cell cycle arrest at the G<sub>1</sub> or G<sub>2</sub>/M phases and initiation of apoptosis<sup>[5,6]</sup>. Previous studies have reported that berberine inhibits the phosphatidylinositol 3-kinase (PI3K)/Akt/mammalian target of rapamycin (mTOR)<sup>[7,8]</sup> signaling cascades to inhibit cell proliferation in various cell lines derived from breast, lung, colon and liver cancer<sup>[9-12]</sup>. Berberine also activates AMP-activated protein kinase (AMPK), a major regulator of metabolic pathways, subsequently inhibiting mTOR, a downstream target of AMPK<sup>[12,13]</sup>.

Although berberine possesses numerous anticancer activities in various cells, the effect of berberine on EC growth and its mechanism of action have not yet been fully elucidated. In this study, we reported that berberine inhibited EC cell growth by promoting cell cycle arrest at G<sub>2</sub>/M phase as well as apoptosis. The Akt, mTOR/p70S6K and AMPK signaling pathways were involved in the antitumor activity of berberine on EC.

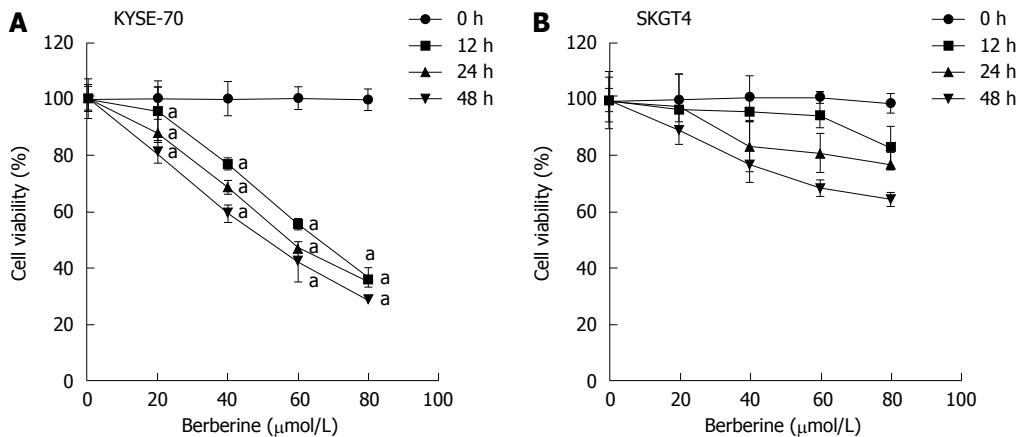
## MATERIALS AND METHODS

### Reagents

Berberine hydrochloride was obtained from Ye-Yuan (Shanghai, China). 3-(4,5-dimethylthiazol-2-yl)-2,5-diphenyl-tetrazolium bromide (MTT), propidium iodide (PI) cell cycle assay kit, Annexin V-FITC/PI apoptosis detection kit and western blot analysis ECL were purchased from Beyotime (Jiangsu, China). RPMI 1640 and fetal bovine serum (FBS) were obtained from Thermo Fisher Scientific (Waltham, MA, United States). All primary antibodies, including against p21, Akt, p-Akt (Ser473), mTOR, p-mTOR (Ser2448), p70S6K, p-p70S6K (Thr389), AMPK, p-AMPK (Thr172) and  $\beta$ -actin, were from Cell Signaling Technology (Danvers, MA, United States). All other common chemicals and buffers were from Boster (Wuhan, China).

### Cell culture and maintenance

Human ESCC cell line KYSE-70 and EAC cell line



**Figure 1** Effects of berberine on viability of esophageal cancer cells. A, B: KYSE-70 (A) and SKGT4 (B) cells were treated with berberine (0, 20, 40, 60 and 80  $\mu\text{mol/L}$ ) for 12, 24 and 48 h and the number of viable cells was measured by MTT assay. Data are expressed as mean  $\pm$  SD of three experiments. <sup>a</sup> $P < 0.05$  vs controls.

SKGT4 were purchased from Kebai Technology (Nanjing, China). The culture medium for both cell lines was RPMI 1640 supplemented with 10% FBS, 100 U/mL penicillin and 100  $\mu\text{g/mL}$  streptomycin. The cells were incubated in a humidified atmosphere with 5%  $\text{CO}_2$  at 37  $^\circ\text{C}$ .

#### Cell viability assay

Cell viability was measured by MTT assay. KYSE-70 ( $10^4/\text{well}$ ) and SKGT4 (5000/well) were seeded in 96-well culture plates and incubated overnight at 37  $^\circ\text{C}$  in a humidified 5%  $\text{CO}_2$  incubator. On the following day, cells were treated with berberine hydrochloride at indicated concentrations for indicated durations. Then, 10  $\mu\text{L}$  MTT dye was added to each well at a final concentration of 5 mg/mL. For an additional 4 h after incubation, blue MTT formazan crystals were dissolved in 100  $\mu\text{L/well}$  of DMSO. The absorbance at 562 nm was measured on a Multiskan Spectrum microplate reader (Thermo Fisher Scientific). Cell viability was calculated by dividing the OD of samples by the OD of the control group. All experiments were repeated three times.

#### Flow cytometric analyses of cell cycle and apoptosis

KYSE-70 cells ( $8 \times 10^4/\text{well}$ ) were seeded in six-well plates in complete culture medium. After incubating for 12 h, cells were treated with berberine hydrochloride (50  $\mu\text{mol/L}$ ). Cells were harvested separately at 12 and 24 h later, and immediately fixed with 75% ethanol. For the cell cycle progression analysis, cells were stained with PI staining buffer (10 mg/mL PI and 100 mg/mL RNase A) for 30 min, and fluorescence intensity was measured by BD FACSCalibur (BD Biosciences, San Jose, CA, United States). For apoptosis analysis, cells were stained with the Annexin V-FITC/PI apoptosis detection kit. The rate of apoptotic cells was analyzed using a dual laser flow cytometer and estimated using the ModFit software (BD Biosciences).

#### Western blot analysis

Cell lysates were prepared with RIPA lysis buffer (50 mM Tris-HCl, 150 mmol/L NaCl, 0.1% SDS, 1% NP40, 0.5% sodium deoxycholate, 1 mmol/L phenylmethylsulfonyl fluoride, 100  $\mu\text{mol/L}$  leupeptin, and 2  $\mu\text{g/mL}$  aprotinin, pH 8.0). Protein extract (20  $\mu\text{g}$ ) was subjected to SDS-PAGE and transferred onto nitrocellulose membranes (Amersham Biosciences, Piscataway, NJ, United States). After blocking with 5% nonfat dry milk, membranes were incubated at 4  $^\circ\text{C}$  overnight with each of the following primary antibodies: p21, pAKT (Ser473), AKT, p-mTOR (Ser2448), mTOR, pp70S6K (Thr389), p70S6K, p-AMPK (Thr172), AMPK (all 1:1000 dilution) and  $\beta$ -actin. Membranes were washed with phosphate buffered saline plus Tween (PBST) buffer and incubated with horseradish peroxidase-conjugated secondary antibodies. After incubation, the membranes were washed three times with PBST and immersed in a SuperSignal West Pico Chemiluminescent Substrate from the detection kit (Thermo Fisher Scientific). Chemiluminescent detection of western blots was performed using an Amersham Imager 600 System (GE Healthcare Bio-Sciences, Pittsburgh, PA, United States).

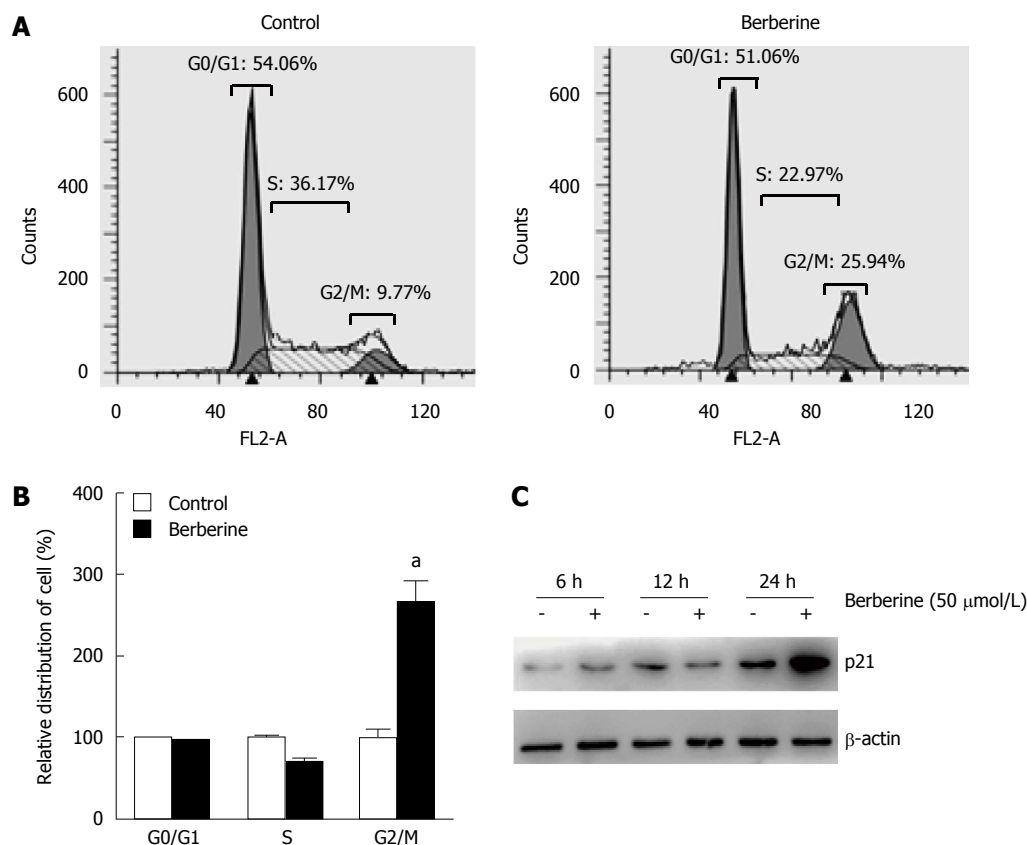
#### Statistical analysis

Data were analyzed using Student's *t*-test, and all data were expressed as mean  $\pm$  SE of the mean.  $P < 0.05$  was considered statistically significant.

## RESULTS

#### Growth suppressive effect of berberine on human EC cells

To examine the biological consequences of berberine, we first examined its effect on the proliferation of ESCC and EAC cells. We observed that berberine significantly suppressed KYSE-70 proliferation after treatment with different concentrations (20, 40, 60



**Figure 2** Berberine treatment induced cell cycle arrest in G2/M phase. A: Flow cytometry analysis of proliferating KYSE-70 cells at 48 h after administration of 50  $\mu\text{mol/L}$  berberine; B: Relative percentages of berberine-treated cells to control cells in different cell cycle phases are shown as the mean  $\pm$  SE of three independent experiments. <sup>a</sup> $P < 0.05$  vs controls; C: Protein expression level of p21 in KYSE-70 cells was examined after berberine administration at 6, 12 and 24 h.

and 80  $\mu\text{mol/L}$  at all tested time points (12, 24 and 48 h) (Figure 1A). Berberine had significantly suppressive effects on SKGT4 cell proliferation when tested at 24 and 48 h after treatment with berberine at 20, 40, 60 or 80  $\mu\text{mol/L}$ . At the 12-h time point, berberine did not significantly inhibit SKGT4 cell proliferation until the concentration reached 80  $\mu\text{mol/L}$  (Figure 1B). Upon comparison of the proliferation inhibitory effects of berberine against the two cell lines, KYSE-70 was more sensitive than SKGT4 to the dose-dependent and time-dependent suppressive effects of berberine. Therefore, we focused further on KYSE-70 cells in the following experiments.

### Cell cycle arrest effect of berberine on human EC cells

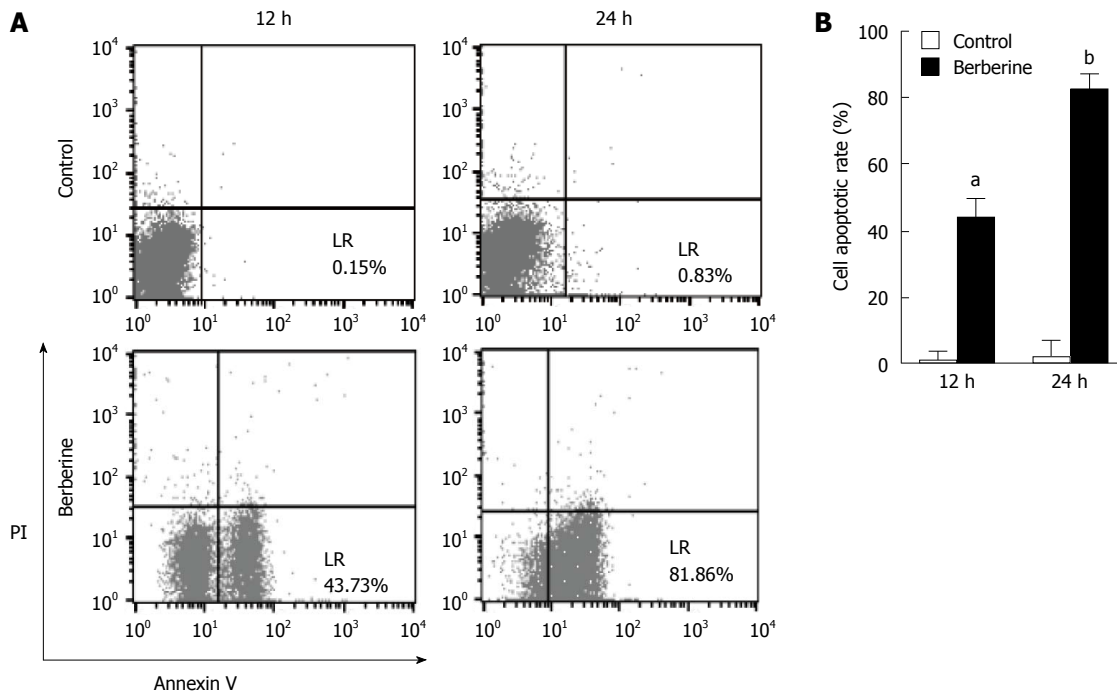
To clarify whether impairment of cell cycle involved in the reduction of KYSE-70 growth was induced by berberine, KYSE-70 cells were treated with 50  $\mu\text{mol/L}$  berberine for 48 h, stained with PI, and subjected to cell cycle progression analysis using flow cytometry. As shown in Figure 2A and B, when compared with the controls, it is evident that the fraction of G2/M cells was increased after berberine treatment (9.77% vs 25.94%,  $P < 0.01$ ), whereas in parallel, we did not observe significant changes in cell numbers in G0/G1 phase (54.06% vs 51.06%). To explore further the molecular signals involved in berberine-induced

G2/M phase arrest, Western blot analysis was used to determine the expression of p21; a key cell cycle negatively regulated protein. As shown in Figure 2C, after application of berberine at 50  $\mu\text{mol/L}$  for 24 h, p21 level was increased. This indicates that berberine-induced cell cycle arrest at G2/M phase in KYSE-70 cells is mediated through p21 down-regulation.

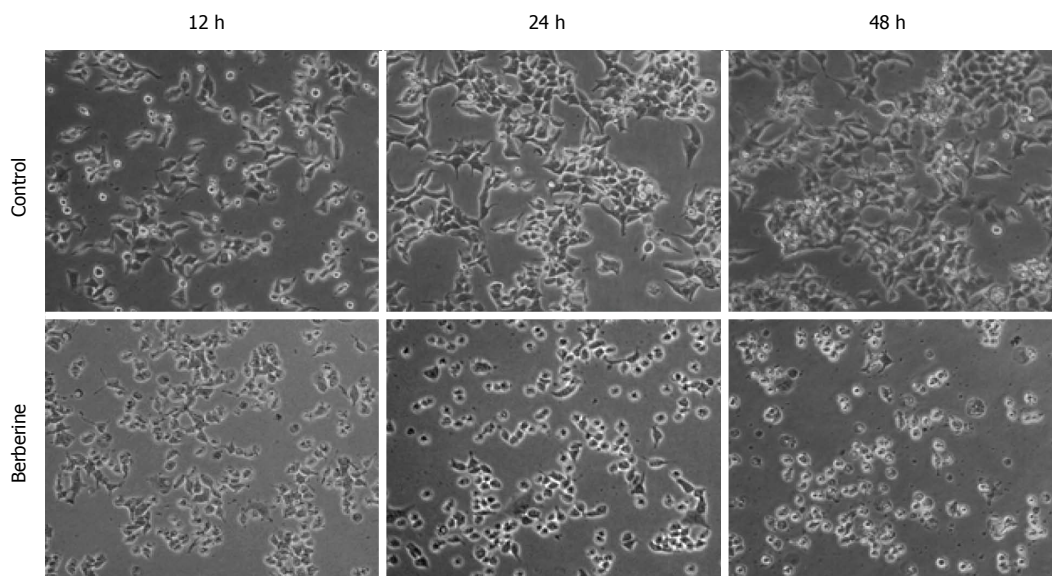
### Apoptotic effect of berberine on EC cells

To evaluate whether the antiproliferative activity of berberine was related to its apoptotic effect, KYSE-70 cells were treated with 50  $\mu\text{mol/L}$  berberine, and flow cytometric analyses were performed by double staining with Annexin-V FITC/PI. As shown in Figure 3, berberine significantly increased KYSE-70 cell apoptosis (0.15% vs 43.73% at 12 h,  $P < 0.05$ ; 0.83% vs 81.86% at 24 h,  $P < 0.05$ ). We next evaluated the effect of berberine on KYSE-70 cell morphology. Phase contrast imaging (Figure 4) showed that untreated control KYSE-70 cells were epithelial-like adherent cells, with a flat and polygonal shape, that grew homogeneously and showed strong refraction. When treated with berberine, the cells showed reduced refraction and shrunk to a round shape. The treated cells grew in a scattered way, resulting in loss of intercellular conjunction. Consistent with the data in Figure 1, phase contrast imaging showed





**Figure 3** Berberine promotes apoptosis in KYSE-70 cells. A: KYSE-70 cells were treated with 50  $\mu\text{mol/L}$  berberine for 12 and 24 h. Apoptotic rates were measured using flow cytometry; B: Apoptotic cell values are expressed as mean  $\pm$  SE of three experiments. <sup>a</sup> $P < 0.05$ , <sup>b</sup> $P < 0.01$  vs controls.



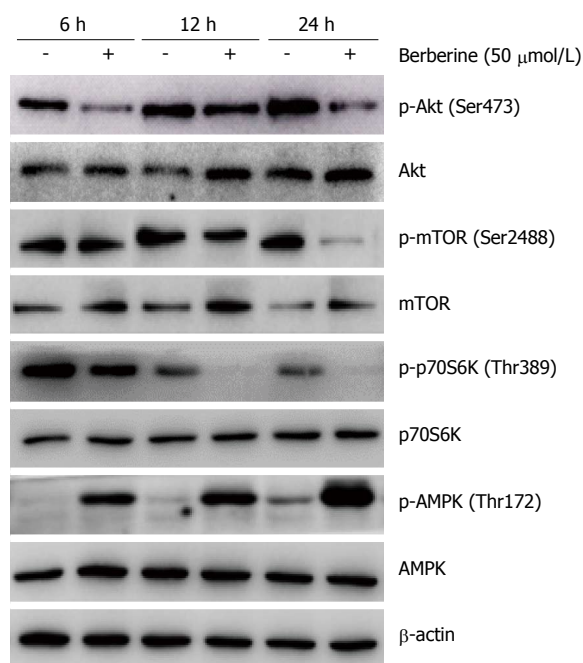
**Figure 4** Berberine treatment induced morphological changes of KYSE-70 cells. Control cells and 50  $\mu\text{mol/L}$  berberine-treated cells were observed under a phase contrast microscope at 12, 24 and 48 h after treatment. Bar represents all images equal to 200  $\mu\text{mol/L}$ .

that berberine suppressed proliferation and promoted apoptosis.

#### **Berberine inhibited cell proliferation through Akt/mTOR/p70S6k and AMPK signaling pathways**

Previous studies have indicated that inhibiting Akt/mTOR/p70S6K signaling and activating AMPK contribute to berberine-induced loss of cell viability<sup>[9,14]</sup>. To address whether these signaling molecules are related to the biological consequences of berberine in KYSE-70 cells,

western blot analyses were performed to examine the phosphorylation levels of these signaling molecules. Cells were treated with 50  $\mu\text{mol/L}$  berberine for 6, 12 or 24 h, in comparison with control cells at each time point. Berberine markedly reduced phosphorylation of Akt at Ser473, mTOR at Ser2448 and p70S6K at Thr389, starting as early as 6 h after treatment and sustaining a reduced level for 24 h. Berberine clearly enhanced AMPK phosphorylation at Thr172 after 6 h treatment, and maintained increasing levels for 24



**Figure 5 Effects of berberine on AMPK and AKT/mTOR/p70S6K activities.** KYSE-70 cells were treated with 50  $\mu\text{mol/L}$  berberine for 6, 12 and 24 h, and protein expressions of p-AKT, AKT, p-mTOR, mTOR, p-p70S6K, p70S6K, p-AMPK and AMPK were analyzed by western blotting.

h after treatment. These data suggest that inhibition of Akt-mTOR/p70S6K and activation of AMPK are important targets of berberine activity (Figure 5).

## DISCUSSION

The low survival rate of EC patients is associated with poor prognosis of the disease and advanced stage at initial diagnosis, thus making surgery an undesirable option. Although advances have been achieved in chemotherapy, the serious adverse effects usually limit clinical application<sup>[14]</sup>. Therefore, there is a critical need to develop non-invasive strategies to confine the growth or prevent the occurrence of EC.

Compounds derived from plants have been identified as an important source of anticancer therapies and have played a vital role in the prevention and treatment of cancer because of their availability and low toxicity when compared with chemotherapy<sup>[15,16]</sup>. A compound derived from an alkaloid-containing plant, berberine, has been shown to possess numerous anticancer activities in various cells by interfering with the multiple aspects of tumorigenesis and tumor progression<sup>[9-12]</sup>. Despite this, it has remained unconfirmed whether berberine exerts an antitumor effect against EC. In the present study, we found that berberine induced strong growth inhibition of the human ESCC cell line KYSE-70 and EAC cell line SKGT4 in a dose-dependent and time-dependent manner. KYSE-70 cells were more susceptible than SKGT4 cells to the inhibitory effects of berberine. Our findings indicate that berberine is a potent inhibitor of human EC cell growth and could

be considered as a potential source of drugs for the treatment of EC patients.

Cell cycle arrest and apoptosis are closely linked to cell proliferation in mammalian cells<sup>[17]</sup>. The major regulatory mechanism of cell growth, the cell cycle dictates the timing of DNA synthesis, and is divided into four distinct phases: M phase (chromosome segregation and mitosis), G1 phase (before DNA replication), S phase (DNA replication) and G2 phase (before mitosis). The cell cycle process includes mechanisms to warrant error amendment, and if not, the cells commit apoptosis, which is one of the most important contributors to the suppression of malignant transformation and elimination of tumors. Control of cell numbers is determined by a complicated balance of cell proliferation and death.

Previous studies have shown that berberine induces cell cycle arrest in various human cancer cells<sup>[5,6]</sup>. To determine whether berberine prompts cell cycle arrest of KYSE-70 cells, the cell cycle distribution was analyzed by flow cytometry after application of berberine. Our results demonstrated that berberine significantly blocked KYSE-70 cells at the G2/M phase of the cell cycle, suggesting that berberine inhibits KYSE-70 cell proliferation by inducing G2/M cell cycle arrest. These data are in agreement with previous studies in human breast cancer cells and liver cancer cells<sup>[6,11]</sup>. Appropriate control over cell cycle progression depends on many factors, such as cyclin-dependent kinase inhibitor p21 facilitating cell cycle arrest in response to a variety of stimuli. Our results showed that berberine augmented p21 level in KYSE-70 cells, indicating that berberine-induced cell cycle arrest in G2/M phase may be through regulation of cell cycle protein p21.

The PI3K/Akt/mTOR signaling pathway plays a crucial role in controlling cell proliferation and apoptosis<sup>[18]</sup>. Constitutive activation of this pathway is considered to be important in cell growth and homeostasis<sup>[19]</sup>. Specifically, activated mTOR directly phosphorylates many downstream targets including p70S6K to promote protein synthesis<sup>[20]</sup>. As a major regulator of cellular energy metabolism, AMPK is a negative regulator of the mTOR pathway<sup>[20,21]</sup>. Berberine regulation of cell proliferation and survival has been shown to involve Akt, mTOR/p70S6K and AMPK signaling pathways<sup>[10-12]</sup>. Our results showed that berberine treatment inhibited the phosphorylation of Akt and mTOR, as well as mTOR downstream target p70S6K, but enhanced the phosphorylation of AMPK. A previous study reported that, in breast cells, berberine transiently activated AMPK and inhibited AKT, but did not inhibit mTOR activity<sup>[22]</sup>. Our results showed that treatment with berberine induced sustained alterations (6-24 h) of increased levels of AKT and mTOR phosphorylation in KYSE-70 cells or increased level of AMPK phosphorylation in KYSE-70 cells. These results suggest that berberine alters Akt, mTOR and AMPK

activity in an individual cell-dependent manner.

In conclusion, it is suggested that berberine inhibits EC cell growth by promoting cell cycle arrest at G2 phase and the apoptotic process. The Akt, mTOR/p70S6K and AMPK signaling pathways are involved in the antitumor activity of berberine on EC. We have shown that berberine is an inhibitor of human EC cell growth and could be considered as a potential source of drugs for the treatment of EC patients.

## COMMENTS

### Background

The initial diagnosis of many esophageal cancer (EC) patients is at an advanced stage, making surgery an undesirable option. Although advances have been achieved in chemotherapy, serious adverse effects usually limit its clinical application. Therefore, there is an urgent need to find non-invasive strategies to confine the growth or prevent the occurrence of EC. Berberine, a compound derived from an alkaloid-containing plant, has been shown to possess numerous anticancer activities in various cells by interfering with the multiple aspects of tumorigenesis and tumor progression. Despite this, it has remained unconfirmed whether berberine exerts antitumor effects against EC.

### Research frontiers

Accumulating studies have revealed that berberine exhibits antitumor activity by interfering with the multiple features of tumorigenesis and tumor development.

### Innovations and breakthroughs

This study revealed that berberine inhibited EC cell growth by promoting cell cycle arrest at G2/M phase and the apoptosis process. Human esophageal squamous cell carcinoma cells were more susceptible to the inhibitory activity of berberine than human esophageal adenocarcinoma cells. Inhibition of Akt, mTOR/p70S6K and activated AMPK signaling pathways was involved in the antitumor activity of berberine on EC.

### Terminology

Berberine is a quaternary ammonium salt derived from Ranunculaceae and Papaveraceae families of plants. Apart from a broad range of bioactivities that includes anti-inflammatory, antibacterial and antidiabetic activity, berberine has been shown to have antitumor activity, which it exerts by interfering with the multiple features of tumorigenesis and tumor development.

### Peer-review

EC is still a cancer with poor prognosis. The testing of chemosensitivity of cancer cells in the esophagus to berberine is important. This enables classification of the condition for selected patients with esophageal cancer to be treated. Berberine can provide treatment options for adjuvant or preoperative treatment.

## REFERENCES

- 1 Sun X, Chen W, Chen Z, Wen D, Zhao D, He Y. Population-based case-control study on risk factors for esophageal cancer in five high-risk areas in China. *Asian Pac J Cancer Prev* 2010; **11**: 1631-1636 [PMID: 21338208]
- 2 Chen W, Zheng R, Baade PD, Zhang S, Zeng H, Bray F, Jemal A, Yu XQ, He J. Cancer statistics in China, 2015. *CA Cancer J Clin* 2016; **66**: 115-132 [PMID: 26808342 DOI: 10.3322/caac.21338]
- 3 Zhang Y. Epidemiology of esophageal cancer. *World J Gastroenterol* 2013; **19**: 5598-5606 [PMID: 24039351 DOI: 10.3748/WJG.v19.i34.5598]
- 4 Tillhon M, Guaman Ortiz LM, Lombardi P, Scovassi AI. Berberine: new perspectives for old remedies. *Biochem Pharmacol* 2012; **84**: 1260-1267 [PMID: 22842630 DOI: 10.1016/j.bcp.2012.07.018]
- 5 Wen C, Wu L, Fu L, Zhang X, Zhou H. Berberine enhances the anti-tumor activity of tamoxifen in drug-sensitive MCF-7 and drug-resistant MCF-7/TAM cells. *Mol Med Rep* 2016; **14**: 2250-2256 [PMID: 27432642 DOI: 10.3892/mmr.2016.5490]
- 6 Yu R, Zhang ZQ, Wang B, Jiang HX, Cheng L, Shen LM. Berberine-induced apoptotic and autophagic death of HepG2 cells requires AMPK activation. *Cancer Cell Int* 2014; **14**: 49 [PMID: 24991192 DOI: 10.1186/1475-2867-14-49]
- 7 Saini KS, Loi S, de Azambuja E, Metzger-Filho O, Saini ML, Ignatiadis M, Dancey JE, Piccart-Gebhart MJ. Targeting the PI3K/AKT/mTOR and Raf/MEK/ERK pathways in the treatment of breast cancer. *Cancer Treat Rev* 2013; **39**: 935-946 [PMID: 23643661 DOI: 10.1016/j.ctrv.2013.03.009]
- 8 Ye B, Jiang LL, Xu HT, Zhou DW, Li ZS. Expression of PI3K/AKT pathway in gastric cancer and its blockade suppresses tumor growth and metastasis. *Int J Immunopathol Pharmacol* 2012; **25**: 627-636 [PMID: 23058013]
- 9 Su K, Hu P, Wang X, Kuang C, Xiang Q, Yang F, Xiang J, Zhu S, Wei L, Zhang J. Tumor suppressor berberine binds VASP to inhibit cell migration in basal-like breast cancer. *Oncotarget* 2016; **7**: 45849-45862 [PMID: 27322681 DOI: 10.18632/oncotarget.9968]
- 10 Xi S, Chuang K, Fang K, Lee Y, Chung J, Chuang Y. Effect of berberine on activity and mRNA expression of N-acetyltransferase in human lung cancer cell line A549. *J Tradit Chin Med* 2014; **34**: 302-308 [PMID: 24992757]
- 11 Guaman Ortiz LM, Croce AL, Aredia F, Sapienza S, Fiorillo G, Syeda TM, Buzzetti F, Lombardi P, Scovassi AI. Effect of new berberine derivatives on colon cancer cells. *Acta Biochim Biophys Sin (Shanghai)* 2015; **47**: 824-833 [PMID: 26341980 DOI: 10.1093/abbs/gmv077]
- 12 Yang X, Huang N. Berberine induces selective apoptosis through the AMPK-mediated mitochondrial/caspase pathway in hepatocellular carcinoma. *Mol Med Rep* 2013; **8**: 505-510 [PMID: 23732865 DOI: 10.3892/mmr.2013.1506]
- 13 Yi T, Zhuang L, Song G, Zhang B, Li G, Hu T. Akt signaling is associated with the berberine-induced apoptosis of human gastric cancer cells. *Nutr Cancer* 2015; **67**: 523-531 [PMID: 25837881 DOI: 10.1080/01635581]
- 14 Satake H, Tahara M, Mochizuki S, Kato K, Hara H, Yokota T, Kiyota N, Kii T, Chin K, Zenda S, Kojima T, Bando H, Yamazaki T, Iwasa S, Honma Y, Hamauchi S, Tsushima T, Ohtsu A. A prospective, multicenter phase I/II study of induction chemotherapy with docetaxel, cisplatin and fluorouracil (DCF) followed by chemoradiotherapy in patients with unresectable locally advanced esophageal carcinoma. *Cancer Chemother Pharmacol* 2016; **78**: 91-99 [PMID: 27193097 DOI: 10.1007/s00280-016-3062-2]
- 15 Scarpa ES, Emanuelli M, Frati A, Pozzi V, Antonini E, Diamantini G, Di Ruscio G, Sartini D, Armeni T, Palma F, Ninfali P. Betacyanins enhance vitexin-2-O-xyloside mediated inhibition of proliferation of T24 bladder cancer cells. *Food Funct* 2016; **7**: 4772-4780 [PMID: 27812566 DOI: 10.1039/C6FO01130F]
- 16 Mohan A, Nair SV, Lakshmanan VK. Leucas aspera Nanomedicine Shows Superior Toxicity and Cell Migration Retarded in Prostate Cancer Cells. *Appl Biochem Biotechnol* 2016; Epub ahead of print [PMID: 27812900 DOI: 10.1007/s12010-016-2291-5]
- 17 Chen X, Wu QS, Meng FC, Tang ZH, Chen X, Lin LG, Chen P, Qiang WA, Wang YT, Zhang QW, Lu JJ. Chikusetsusaponin IVa methyl ester induces G1 cell cycle arrest, triggers apoptosis and inhibits migration and invasion in ovarian cancer cells. *Phytomedicine* 2016; **23**: 1555-1565 [PMID: 27823619 DOI: 10.1016/j.phymed]
- 18 Manning BD, Cantley LC. United at last: the tuberous sclerosis complex gene products connect the phosphoinositide 3-kinase/Akt pathway to mammalian target of rapamycin (mTOR) signalling. *Biochem Soc Trans* 2003; **31**: 573-578 [PMID: 12773158]
- 19 Inoki K, Zhu T, Guan KL. TSC2 mediates cellular energy response to control cell growth and survival. *Cell* 2003; **115**: 577-590 [PMID: 14651849]
- 20 Matsui Y, Takagi H, Qu X, Abdellatif M, Sakoda H, Asano

- T, Levine B, Sadoshima J. Distinct roles of autophagy in the heart during ischemia and reperfusion: roles of AMP-activated protein kinase and Beclin 1 in mediating autophagy. *Circ Res* 2007; **100**: 914-922 [PMID: 17332429 DOI: 10.1161/01.RES.0000261924.76669.36]
- 21 **Meijer AJ**, Dubbelhuis PF. Amino acid signalling and the integration of metabolism. *Biochem Biophys Res Commun* 2004; **313**: 397-403 [PMID: 14684175]
- 22 **Lee KH**, Lo HL, Tang WC, Hsiao HH, Yang PM. A gene expression signature-based approach reveals the mechanisms of action of the Chinese herbal medicine berberine. *Sci Rep* 2014; **4**: 6394 [PMID: 25227736 DOI: 10.1038/srep06394]

**P- Reviewer:** Zielinski J   **S- Editor:** Gong ZM   **L- Editor:** Filipodia  
**E- Editor:** Wang CH







Published by **Baishideng Publishing Group Inc**

8226 Regency Drive, Pleasanton, CA 94588, USA

Telephone: +1-925-223-8242

Fax: +1-925-223-8243

E-mail: [bpgoffice@wjgnet.com](mailto:bpgoffice@wjgnet.com)

Help Desk: <http://www.f6publishing.com/helpdesk>

<http://www.wjgnet.com>



ISSN 1007-9327

