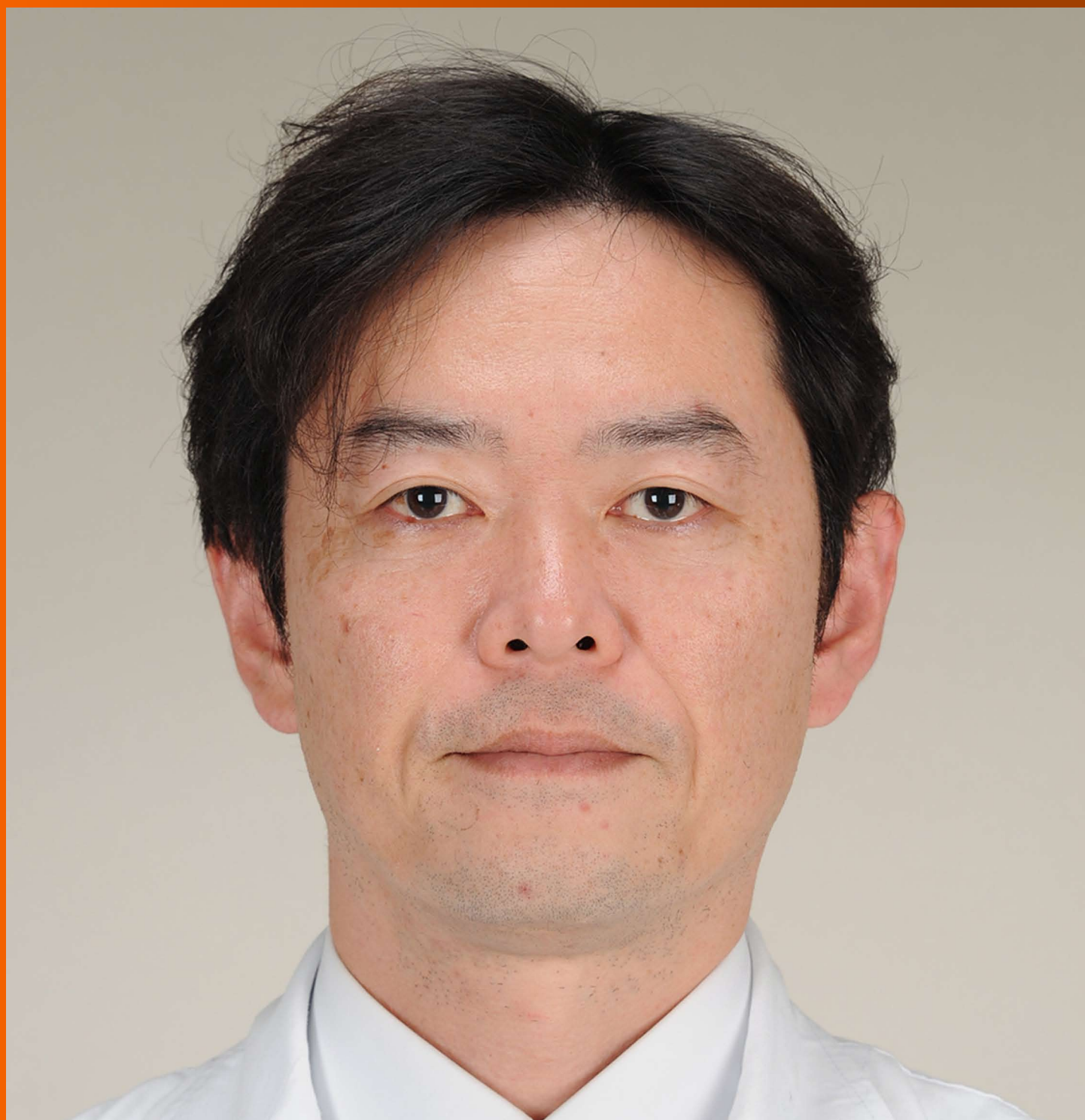


World Journal of *Gastroenterology*

World J Gastroenterol 2017 November 21; 23(43): 7653-7812



**EDITORIAL**

- 7653 Noncoding RNAs as drivers of the phenotypic plasticity of oesophageal mucosa

Fassan M, Facchin S, Munari G, Fanelli GN, Lorenzon G, Savarino E

MINIREVIEWS

- 7657 Functional interaction of endoplasmic reticulum stress and hepatitis B virus in the pathogenesis of liver diseases

Kim SY, Kyaw YY, Cheong J

- 7666 Pathological process of liver sinusoidal endothelial cells in liver diseases

Ni Y, Li JM, Liu MK, Zhang TT, Wang DP, Zhou WH, Hu LZ, Lv WL

ORIGINAL ARTICLE**Basic Study**

- 7678 Resveratrol modifies biliary secretion of cholephilic compounds in sham-operated and cholestatic rats

Dolezelova E, Prasnicka A, Cermanova J, Carazo A, Hyrsova L, Hroch M, Mokry J, Adamcova M, Mrkvicova A, Pavek P, Micuda S

- 7693 Chitinase 3-like 1 secreted by peritumoral macrophages in esophageal squamous cell carcinoma is a favorable prognostic factor for survival

Xing S, Zheng X, Zeng T, Zeng MS, Zhong Q, Cao YS, Pan KL, Wei C, Hou F, Liu WL

- 7705 Palmitate induces fat accumulation by activating C/EBP β -mediated G0S2 expression in HepG2 cells

Zhao NQ, Li XY, Wang L, Feng ZL, Li XF, Wen YF, Han JX

Retrospective Cohort Study

- 7716 Epidemiology and natural history of Wilson's disease in the Chinese: A territory-based study in Hong Kong between 2000 and 2016

Cheung KS, Seto WK, Fung J, Mak LY, Lai CL, Yuen MF

Retrospective Study

- 7727 Efficacy of thalidomide therapy in pediatric Crohn's disease with evidence of tuberculosis

Wang L, Hong Y, Wu J, Leung YK, Huang Y

- 7735 Combined endovascular brachytherapy, sorafenib, and transarterial chemobolization therapy for hepatocellular carcinoma patients with portal vein tumor thrombus

Zhang ZH, Liu QX, Zhang W, Ma JQ, Wang JH, Luo JJ, Liu LX, Yan ZP

- 7746** Procedure-related complications in gastric variceal obturation with tissue glue

Guo YE, Miao HB, Wen ZF, Xuan JY, Zhou HX

- 7756** Gastric xanthelasma and metabolic disorders: A large retrospective study among Chinese population

Chen Y, He XJ, Zhou MJ, Li YM

Clinical Trials Study

- 7765** Application of superb microvascular imaging in focal liver lesions

He MN, Lv K, Jiang YX, Jiang TA

Observational Study

- 7776** Chronic liver disease is universal in children with biliary atresia living with native liver

Lee WS, Ong SY, Foo HW, Wong SY, Kong CX, Seah RB, Ng RT

Prospective Study

- 7785** How severe is moderately severe acute pancreatitis? Clinical validation of revised 2012 Atlanta Classification

Ignatavicius P, Gulla A, Cernauskis K, Barauskas G, Dambrauskas Z

META-ANALYSIS

- 7791** Laparoscopic vs open hepatectomy for hepatolithiasis: An updated systematic review and meta-analysis

Li H, Zhang J, Cai JY, Li SH, Zhang JB, Wang XM, Chen GH, Yang Y, Wang GS

CASE REPORT

- 7807** Fatal gastrointestinal histoplasmosis 15 years after orthotopic liver transplantation

Agrawal N, Jones DEJ, Dyson JK, Hoare T, Melmore SA, Needham S, Thompson NP

ABOUT COVER

Editorial board member of *World Journal of Gastroenterology*, kenshi Matsumoto, MD, PhD, Associate Professor, Department of Gastroenterology, Juntendo University, Tokyo 113-8421, Japan

AIMS AND SCOPE

World Journal of Gastroenterology (*World J Gastroenterol*, *WJG*, print ISSN 1007-9327, online ISSN 2219-2840, DOI: 10.3748) is a peer-reviewed open access journal. *WJG* was established on October 1, 1995. It is published weekly on the 7th, 14th, 21st, and 28th each month. The *WJG* Editorial Board consists of 1375 experts in gastroenterology and hepatology from 68 countries.

The primary task of *WJG* is to rapidly publish high-quality original articles, reviews, and commentaries in the fields of gastroenterology, hepatology, gastrointestinal endoscopy, gastrointestinal surgery, hepatobiliary surgery, gastrointestinal oncology, gastrointestinal radiation oncology, gastrointestinal imaging, gastrointestinal interventional therapy, gastrointestinal infectious diseases, gastrointestinal pharmacology, gastrointestinal pathophysiology, gastrointestinal pathology, evidence-based medicine in gastroenterology, pancreatology, gastrointestinal laboratory medicine, gastrointestinal molecular biology, gastrointestinal immunology, gastrointestinal microbiology, gastrointestinal genetics, gastrointestinal translational medicine, gastrointestinal diagnostics, and gastrointestinal therapeutics. *WJG* is dedicated to become an influential and prestigious journal in gastroenterology and hepatology, to promote the development of above disciplines, and to improve the diagnostic and therapeutic skill and expertise of clinicians.

INDEXING/ABSTRACTING

World Journal of Gastroenterology (*WJG*) is now indexed in Current Contents[®]/Clinical Medicine, Science Citation Index Expanded (also known as SciSearch[®]), Journal Citation Reports[®], Index Medicus, MEDLINE, PubMed, PubMed Central and Directory of Open Access Journals. The 2017 edition of Journal Citation Reports[®] cites the 2016 impact factor for *WJG* as 3.365 (5-year impact factor: 3.176), ranking *WJG* as 29th among 79 journals in gastroenterology and hepatology (quartile in category Q2).

FLYLEAF

I-IX Editorial Board

EDITORS FOR THIS ISSUE

Responsible Assistant Editor: Xiang Li
Responsible Electronic Editor: Yan Huang
Proofing Editor-in-Chief: Lian-Sheng Ma

Responsible Science Editor: Ke Chen
Proofing Editorial Office Director: Jin-Lei Wang

NAME OF JOURNAL
World Journal of Gastroenterology

ISSN
ISSN 1007-9327 (print)
ISSN 2219-2840 (online)

LAUNCH DATE
October 1, 1995

FREQUENCY
Weekly

EDITORS-IN-CHIEF
Damian Garcia-Olmo, MD, PhD, Doctor, Professor, Surgeon, Department of Surgery, Universidad Autonoma de Madrid; Department of General Surgery, Fundacion Jimenez Diaz University Hospital, Madrid 28040, Spain

Stephen C Strom, PhD, Professor, Department of Laboratory Medicine, Division of Pathology, Karolinska Institutet, Stockholm 141-86, Sweden

Andrzej S Tarnawski, MD, PhD, DSc (Med), Professor of Medicine, Chief Gastroenterology, VA Long Beach Health Care System, University of California, Irvine, CA, 5901 E. Seventh Str., Long Beach,

CA 90822, United States

EDITORIAL BOARD MEMBERS
All editorial board members resources online at <http://www.wjgnet.com/1007-9327/editorialboard.htm>

EDITORIAL OFFICE
Jin-Lei Wang, Director
Ze-Mao Gong, Vice Director
World Journal of Gastroenterology
Baishideng Publishing Group Inc
7901 Stoneridge Drive, Suite 501,
Pleasanton, CA 94588, USA
Telephone: +1-925-2238242
Fax: +1-925-2238243
E-mail: editorialoffice@wjgnet.com
Help Desk: <http://www.f6publishing.com/helpdesk>
<http://www.wjgnet.com>

PUBLISHER
Baishideng Publishing Group Inc
7901 Stoneridge Drive, Suite 501,
Pleasanton, CA 94588, USA
Telephone: +1-925-2238242
Fax: +1-925-2238243
E-mail: bpgoffice@wjgnet.com
Help Desk: <http://www.f6publishing.com/helpdesk>

<http://www.wjgnet.com>

PUBLICATION DATE
November 21, 2017

COPYRIGHT
© 2017 Baishideng Publishing Group Inc. Articles published by this Open-Access journal are distributed under the terms of the Creative Commons Attribution Non-commercial License, which permits use, distribution, and reproduction in any medium, provided the original work is properly cited, the use is non commercial and is otherwise in compliance with the license.

SPECIAL STATEMENT
All articles published in journals owned by the Baishideng Publishing Group (BPG) represent the views and opinions of their authors, and not the views, opinions or policies of the BPG, except where otherwise explicitly indicated.

INSTRUCTIONS TO AUTHORS
Full instructions are available online at <http://www.wjgnet.com/bpg/gerinfo/204>

ONLINE SUBMISSION
<http://www.f6publishing.com>

Fatal gastrointestinal histoplasmosis 15 years after orthotopic liver transplantation

Nikita Agrawal, David EJ Jones, Jessica K Dyson, Tim Hoare, Sharon A Melmore, Stephanie Needham, Nick P Thompson

Nikita Agrawal, Nick P Thompson, Department of Gastroenterology, Newcastle Hospitals NHS Foundation Trust, Newcastle Upon Tyne NE7 7DN, United Kingdom

David EJ Jones, Jessica K Dyson, Faculty of Medical Sciences, Newcastle University, Newcastle Upon Tyne NE7 7DN, United Kingdom

Tim Hoare, Department of Radiology, Newcastle Hospitals NHS Foundation Trust, Newcastle Upon Tyne NE7 7DN, United Kingdom

Sharon A Melmore, Stephanie Needham, Department of Histopathology, Newcastle Hospitals NHS Foundation Trust, Newcastle Upon Tyne NE7 7DN, United Kingdom

ORCID number: Nikita Agrawal (0000-0003-1866-1360); David EJ Jones (0000-0002-0083-5564); Jessica K Dyson (0000-0001-6733-5225); Tim Hoare (0000-0001-7830-2058); Sharon A Melmore (0000-0003-0313-7443); Stephanie Needham (0000-0003-0389-0128); Nick P Thompson (0000-0002-2955-2613).

Author contributions: All authors contributed to writing this case report and all authors apart from Agrawal N were involved in the care of this patient.

Informed consent statement: Consent for publication granted by next of kin.

Conflict-of-interest statement: No conflict of interests are declared by any authors.

Open-Access: This article is an open-access article which was selected by an in-house editor and fully peer-reviewed by external reviewers. It is distributed in accordance with the Creative Commons Attribution Non Commercial (CC BY-NC 4.0) license, which permits others to distribute, remix, adapt, build upon this work non-commercially, and license their derivative works on different terms, provided the original work is properly cited and the use is non-commercial. See: <http://creativecommons.org/licenses/by-nc/4.0/>

Manuscript source: Unsolicited manuscript

Correspondence to: Nick P Thompson, MD, Department of Gastroenterology, Newcastle Hospitals NHS Foundation Trust, High Heaton, Newcastle Upon Tyne NE7 7DN, United Kingdom. nick.thompson@nuth.nhs.uk
Telephone: +44-191-2448584
Fax: +44-191-2231249

Received: July 19, 2017

Peer-review started: July 20, 2017

First decision: August 10, 2017

Revised: September 28, 2017

Accepted: October 17, 2017

Article in press: October 17, 2017

Published online: November 21, 2017

Abstract

We report a case of ileo-colonic Histoplasmosis without apparent respiratory involvement in a patient who had previously undergone an orthotopic liver transplant (OLT) for primary biliary cholangitis 15 years earlier. The recipient lived in the United Kingdom, a non-endemic region for Histoplasmosis. However, she had previously lived in rural southern Africa prior to her OLT. The patient presented with iron deficiency anaemia, diarrhoea, abdominal pain and progressive weight loss. She reported no previous foreign travel, however, it later became known that following her OLT she had been on holiday to rural southern Africa. On investigation, a mild granulomatous colitis primarily affecting the right colon was identified, that initially improved with mesalazine. Her symptoms worsened after 18 mo with progressive ulceration of her distal small bowel and right colon. Mycobacterial, Yersinia, cytomegalovirus and human immunodeficiency virus infections were excluded and the patient was treated with prednisolone for a working diagnosis of Crohn's disease. Despite some early symptom improvement following steroids, there was subsequent deterioration with the patient developing gram-negative sepsis and multi-organ failure, leading to her death. Post-mortem examination

revealed that her ileo-colonic inflammation was caused by Histoplasmosis.

Key words: Histoplasmosis; Orthotopic liver transplant; Primary biliary cholangitis; Primary biliary cholangitis

© **The Author(s) 2017.** Published by Baishideng Publishing Group Inc. All rights reserved.

Core tip: Histoplasmosis is an endemic fungal infection in many parts of the world; the majority of hosts remain asymptomatic. Clinical manifestations are most commonly pulmonary. We present an unusual case of Histoplasmosis occurring in a patient who was living in a non-endemic region, developed the disease after 15 years of immunosuppression following an orthotopic liver transplant, she presented with no pulmonary symptoms but rather luminal GI and systemic symptoms. This highlights the importance of considering Histoplasmosis within the differential of immunosuppressed patients with a past relevant travel history who present with diarrhea, weight loss, abdominal pain and granulomatous colitis.

Agrawal N, Jones DEJ, Dyson JK, Hoare T, Melmore SA, Needham S, Thompson NP. Fatal gastrointestinal histoplasmosis 15 years after orthotopic liver transplantation. *World J Gastroenterol* 2017; 23(43): 7807-7812 Available from: URL: <http://www.wjgnet.com/1007-9327/full/v23/i43/7807.htm> DOI: <http://dx.doi.org/10.3748/wjg.v23.i43.7807>

INTRODUCTION

Granulomatous inflammation of the terminal ileum and right colon is most commonly caused by Crohn's disease in the United Kingdom, however chronic infections can cause similar appearances. Infectious causes include Mycobacteria tuberculosis and avium intracellulare complex, Yersinia, cytomegalovirus (CMV) and human immunodeficiency virus (HIV). Histoplasmosis is not endemic in the United Kingdom however this fungus can remain latent for many years following initial asymptomatic exposure and then may become active with a declining host immune response.

CASE REPORT

A 74-year-old Caucasian woman underwent orthotopic liver transplantation in 1997 for primary biliary cholangitis. She was referred initially to gastroenterology services in 2012 (15 years post-transplant), with new onset iron deficiency anaemia, loose watery stools with urgency occurring up to 3-4 times/wk, cramping lower abdominal pain and weight loss.

In 2009, she had been investigated for suspected interstitial pneumonitis with a trans-bronchial biopsy. No clear cause was established but she was commenced on steroids with subsequent normal chest imaging. Her other notable past medical history included

hypercholesterolaemia, insulin-dependent diabetes mellitus and paroxysmal atrial tachycardia.

Her medications were mycophenolate mofetil (MMF) 1 g twice daily; tacrolimus (Prograf) 1 mg twice daily, prednisolone 5 mg daily, aspirin, diltiazem, irbesartan, perindopril, ursodeoxycholic acid (UDCA), simvastatin, insulin and modafinil. There was no relevant family history. The patient reported no recent foreign travel however she had lived in Africa for almost 20 years during her 2nd-4th decades, spending periods of time in rural housing. Nonetheless, this was many years prior to liver transplantation and she had no known exposure to tuberculosis (TB). Blood results showed: Hb 11.0 gm/dL, MCV 77.2 fL, WCC $8.2 \times 10^9/L$, CRP < 5 mg/L, albumin 44 g/L, ferritin 23 µg/L, bilirubin 3 µmol/L, ALP 129 µ/L and ALT 21 µ/L. Coeliac serology was negative.

Gastroscopy showed gastritis with scattered antral erosions with a negative Helicobacter urease test. The patient's gastritis and anaemia were managed with lansoprazole and oral iron replacement, respectively, and aspirin was stopped. Routine repeat gastroscopy 6 wk later showed improvement. A colonoscopy was performed that showed an indistinct mucosal vascular pattern in the ascending colon, with biopsies revealing a moderately active, right-sided, chronic granulomatous colitis. Given the lack of any past history of inflammatory bowel disease (IBD) and the patient's longstanding immunosuppression, infection was considered. The patient displayed no clinical or laboratory evidence of disseminated infection. She reported no fevers, night sweats, cough or haemoptysis. Inflammatory markers were within normal limits and her chest X-ray (CXR) was normal. Both a Quantiferon gold test and Yersinia serology were negative. A faecal calprotectin was mildly raised at 136 µg/g and small bowel imaging with both magnetic resonance (MR) enterography and a barium follow-through were performed. These showed no significant abnormality, with no evidence of inflammatory bowel disease affecting the small bowel.

As no infective cause had been found, a presumptive diagnosis of mild Crohn's colitis was made and the patient was started on a trial of mesalazine in November 2012 with almost complete remission of her symptoms when she was seen in clinic 4 mo later. At that time lansoprazole was replaced with ranitidine in case the proton pump inhibitor had contributed to her symptoms. In June 2013 the patient stopped her mesalazine as she felt so well.

Unfortunately her symptoms recurred in December 2013, and at clinic review in May 2014 she had lost 10 kg of weight, was having loose bowel motions 3-4 times/d with associated urgency, nocturnal symptoms and occasional faecal incontinence. She also complained of indigestion and early satiety although no dysphagia.

Gastroscopy in July 2014 showed mild oesophagitis and erythematous gastritis, with biopsy findings of mild focal duodenitis but no granulomatous changes, viral

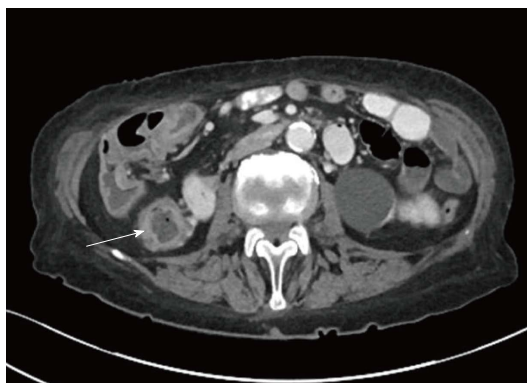


Figure 1 Axial image from computed tomography Chest/Abdomen/Pelvis performed with intravenous (IV) and oral contrast showing non-specific colonic wall thickening in the ascending colon (arrowed) and hepatic flexure characterised by discontinuous mucosal hyperenhancement and submucosal oedema reflecting ulceration and inflammation.

inclusions, parasites, metaplasia or changes suggestive of coeliac disease. Helicobacter urease test was now positive. Repeat colonoscopy showed more significant patchy inflammation and focal ulceration in the right colon. Colonic biopsies showed scattered giant cells and granulomas and terminal ileal biopsies revealed small bowel mucosa distorted with reactive lymphoid tissue and increased eosinophils, lymphocytes and plasma cells in the lamina propria. The pattern was most suggestive of IBD or unusual infections, rather than MMF-related changes, but other drug-related damage could not be excluded. Immunohistochemistry for CMV was negative and acid fast bacilli stain was negative. Mesalazine was restarted, however this time there was no significant symptomatic improvement-prompting a gastroenterology referral.

She was seen by the gastroenterology service in October 2014 at which time her stool frequency was 20 times/d, with ongoing urgency, incontinence and cramping abdominal pain. There was no evidence of blood in the stool or steatorrhoea. She continued to suffer from early satiety, anorexia and had now lost almost 20 kg in weight in the preceding year. A computed tomography (CT) scan of the chest, abdomen and pelvis showed no malignant lesion to explain her symptoms. However it did confirm the appearance of enterocolitis affecting the distal 15 cm of terminal ileum with associated stricturing, as well as the ascending colon up to the hepatic flexure (Figure 1). No abnormality was seen in the lungs. As atypical infections appeared to have been excluded a presumptive diagnosis of Crohn's disease was made and her steroid dose was increased from a maintenance dose of prednisolone 5 mg that she had been on since 2010, to 30 mg daily (with a tapering course) which resulted in some improvement of symptoms. Her severe diarrhoea continued and culminated in a hospital admission in November 2014 due to severe dehydration and acute kidney injury. Although this improved with intravenous fluids, a second course of increased steroids was not

beneficial. Virology screen confirmed negative HIV status. Bloods tests revealed: Hb 112 g/L, MCV 77.2 fL, WCC $10.8 \times 10^9/L$, neutrophils $9.09 \times 10^9/L$, CRP 15 mg/L, ESR 9 mm/h, albumin 32 g/L, bilirubin 11 $\mu\text{mol/L}$, ALP 120 μL , ALT 11 μL and GGT 107 μL . A repeat Quantiferon test was again negative.

Given a presumptive diagnosis of progressive Crohn's disease by December 2014, both surgery and infliximab were considered. However, she rapidly deteriorated with evidence of gastrointestinal bleeding. The patient developed Enterococcus septicaemia likely as a secondary complication of her immunosuppressed state and gut inflammation, with subsequent multi-organ failure, and she sadly died in January 2015.

A limited post-mortem examination of the abdomen showed active inflammation and ulceration of the terminal ileum and most of the large intestine. Histological examination revealed abundant intracellular, small oval encapsulated narrow-based budding yeast cells some of which showed a peri-organism halo. The features were those of *Histoplasma capsulatum*, confirmed with positive Grocott and Giemsa histochemical staining (Figure 2). Her final diagnosis was therefore of gram-negative septicaemia as a complication of gastrointestinal Histoplasmosis, immunosuppression and diabetes. Review of her 2014 ileocolonic biopsies at this time with the addition of Grocott stain highlighted scant forms in keeping with Histoplasmosis.

We discovered on later discussion with her family that although the patient had not lived abroad for any prolonged period following her liver transplant, she had visited Southern Africa during this period and stayed in very basic accommodation. Thus, exposure to Histoplasmosis could have either been at this point, in her already immunosuppressed state, or earlier when she had lived in Africa with a prolonged period of dormancy until transplantation and increasing immunosuppressive treatments.

On reflection, there were opportunities for considering Histoplasmosis within the differential diagnosis. At the time of the second colonoscopy, the pattern of ulcerating ileo-colitis raised the possibility of an unusual infection especially in a long-term immunosuppressed individual with diabetes as well as Crohn's disease. Mycobacterial, Yersinia, HIV and CMV infections were excluded, though Histoplasmosis was not considered and as such Grocott stain was not performed at this time.

DISCUSSION

Histoplasmosis is a fungal infection that is typically acquired by inhalation of microscopic spores of the dimorphic fungus *Histoplasma capsulatum*, an organism found in parts of central and eastern North America, Central and South America, Africa, Asia and Australia^[1-5]. Its spores thrive in and thus are predominantly found in nitrogen or phosphate- enriched soils that are associated with large amounts of bat and bird guano, including in

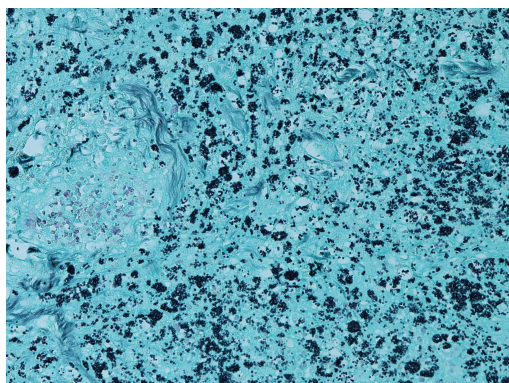


Figure 2 Extensive infiltration of bowel mucosa by the small histoplasmosis, Grocott stain.

caves colonized by bats^[6,7].

Host exposure occurs after inhalation of airborne microconidia (spores) following disturbance of contaminated material in the soil in daily activities, and is extremely common in endemic areas^[7,8]. The inhaled *H. capsulatum* transforms from a mold to a yeast state in the lungs, and is phagocytosed by alveolar macrophages, in which it can multiply. These macrophages then disseminate the organism throughout the rest of the body *via* the reticuloendothelial system; generally before a cell mediated immune response can develop^[7,9].

The majority (> 99%) of people exposed to *H. capsulatum* will still be asymptomatic or as the lungs are the entry portals for the organism, show only a mild self-limiting respiratory illness^[7]. These people have generally undergone haematogenous dissemination of the organism, however the subsequent development of T cell mediated immunity adequately controls and overcomes the primary infection-preventing it progressing or manifesting^[7,8,10,11].

In the < 1% of patients who do develop clinically appreciable infection, disease severity of Histoplasmosis, is dependent on the number of conidia inhaled and adequacy of the host's T-cell mediated immune response^[7]. As such, the healthy host exposed to a relatively small inoculum of *H. capsulatum* would remain asymptomatic, while progressive primary disseminated disease would tend to occur in immunosuppressed patients (particularly with cellular immunity compromise), and especially if exposed to large inoculums of the organism.

Risk factors for developing disseminated Histoplasmosis disease at primary infection include: extremes of age, immunosuppressive conditions such as acquired immune deficiency syndrome (AIDS), haematological malignancies, solid organ transplants (SOTs), stem cell transplants and congenital T-cell deficiency syndromes, as well as immunosuppressive agents-particularly tumour necrosis factor antagonists^[7,12].

Nonetheless, despite SOT being a risk factor for disseminated histoplasmosis, the absolute incidence of the disease in this patient group still remains low. One prospective surveillance study estimated incidence at

1.6/1000 patients, with the highest incidence being in liver transplant patients, though the most cases overall in kidney transplant recipients, as the latter were so much more common^[13]. Subsequent large American studies estimate the overall incidence of Histoplasmosis in patients with SOTs at < 0.5%, despite America having a higher endemic rate of the disease than in Europe^[14].

The highest risk of developing Histoplasmosis in an exposed patient was in the first year post transplant, although the risk persists up to 20 years later^[14]. Use of mycophenolate for immunosuppression and presence of fungaemia were the 2 specific risk factors for severe histoplasmosis in SOT patients identified by multivariate risk factor analysis^[14]. Graft rejection appeared not to be a risk factor for Histoplasmosis in these patients^[15].

Moreover it should be noted that even in healthy hosts, though the cell mediated immune response against *H. capsulatum* may potentially control the primary infection and prevent symptom manifestation, it does not eradicate the organism. As such *H. capsulatum* can remain silently viable in scattered foci throughout the body for years following initial infection^[7]. Leaving these individuals prone to future reactivation of disease with any subsequent decline in cellular immunity; even if this occurs years after they have left the endemic region where they acquired the primary infection^[7].

Alternatively, secondary infection can occur if an individual with past exposure to *H. capsulatum* returns to an endemic region and is exposed to a second large inoculum in a newly immunosuppressed state^[7]. As our patient visited endemic regions for *H. capsulatum* both before and after her liver transplant, it is impossible to elucidate the mechanism by which she developed infection - new primary infection, secondary infection or reactivation.

In terms of clinical presentation of Histoplasmosis in the < 1% of patients who develop disease, there is a huge spectrum, with almost all the organ systems having potential for involvement following dissemination of the organism. There is a broad subdivision into either pulmonary Histoplasmosis (for predominantly respiratory disease) or disseminated Histoplasmosis (for clinical, laboratory or imaging evidence of extra pulmonary disease)^[7].

The presentation of pulmonary Histoplasmosis itself is wide-ranging-from rapidly progressive forms which can present like an acute respiratory distress syndrome (ARDS) picture, more chronic cavitary Histoplasmosis in older patients with underlying past pulmonary disease, and progressive infection of mediastinal lymph nodes causing granulomatous mediastinitis or mediastinal fibrosis^[7]. Our patient did present in 2009 with an interstitial fibrosis noted on her CT scans, and was started on steroids for this as no obvious cause was found for it. This seemed to significantly improve both her symptoms and CT scan, her later chest radiology appearances did not suggest any pulmonary disease, so

it is presumed this was not a respiratory manifestation of Histoplasmosis.

Disseminated Histoplasmosis manifests even more diversely. It can present with single organ involvement as the sole feature of dissemination, or significant systemic features +/- multi-organ involvement or at the most aggressive end of the spectrum- a systemic inflammatory response syndrome mimicking severe sepsis with complications including hypotension, acute kidney injury and disseminated intravascular coagulation^[7].

Systemic symptoms in disseminated histoplasmosis include anorexia, weight loss, fatigue and fevers; examination findings can include lymphadenopathy, hepatosplenomegaly, and in some, mucocutaneous lesions such as ulcerations. Blood tests might reveal raised inflammatory markers including CRP, ESR and ferritin^[7].

Gastrointestinal histoplasmosis is believed to be a subset of disseminated disease^[16,17] and though organisms are often found within the GI tract (one autopsy series identified the organism in 70% cases of disseminated histoplasmosis^[18]), significant symptomatic disease affecting this system is strikingly less common with another study reporting the incidence of clinically diagnosed GI disease in only 3%-12% of patients with disseminated histoplasmosis^[19]. This discrepancy between autopsy proven presence of the organism and symptomatic disease is present in various other organ systems too, likely because haematogenous dissemination ensures seeding of the organism throughout the body, though organism presence doesn't necessarily correlate with clinical disease.

Observed specific GI symptoms aside from the systemic ones already mentioned include intermittent abdominal pain and diarrhea (both watery and bloody), which in severe cases led to malabsorption^[7]. The most serious complications were bowel perforation and haemorrhage^[9]. The most commonly involved sites were the colon, then the small bowel. Radiological findings include bowel wall thickening, mass like lesions and signs of small bowel obstruction^[9], while endoscopically mucosal ulcerations were most commonly seen (both unifocal and multiple), as well as polypoid lesions, obstructive masses and strictures^[7,20].

In the case described here, a diagnosis of Histoplasmosis was only made at post-mortem examination. However, if the diagnosis had been considered earlier, a urinary Histoplasma antigen test, which is one of the most sensitive diagnostic methods, could have been used^[14]. Antigen testing is also suggested as a useful way of monitoring treatment response; antigen concentrations decrease with therapy and increase in disease relapse^[8]. Primary detection on ileocolonic biopsy material may also have been possible if a fungal infection had been suspected and Grocott's methanamine silver stain had been performed at this time.

Histoplasmosis is an eminently treatable disease, with even severe disseminated forms responding well

to IV amphotericin B, stepped down to oral azoles for generally at least a 12 mo course^[8,14]. If left untreated, this condition often proves fatal.

Overall we have described a case of primarily luminal GI Histoplasmosis, with absent clinical/radiological evidence of pulmonary involvement, occurring 15 years following liver transplantation, in a non-endemic region.

Although Histoplasmosis is a relatively rare disease (even in immunosuppressed patients most prone to developing it); it is eminently treatable if appropriately considered and tested for. Severe disseminated Histoplasmosis if left untreated can often prove fatal. For immunosuppressed patients especially, regardless of where they reside, it is important to consider Histoplasmosis within the differential for ileo-colonic inflammation if a thorough travel history reveals stay in an endemic region, with the possibility of exposure to *H. capsulatum*, even if this was years prior to immunocompromise. The presence of additional pulmonary and/or systemic features may further suggest this disease, although the absence of these features is not enough to disregard the disease.

COMMENTS

Case characteristics

The patient presented 15 years post liver transplant for primary biliary cholangitis, with an iron deficiency anaemia, diarrhea, abdominal pain and progressive weight loss while living in the United Kingdom. Travel history revealed she had previously lived in rural Africa prior to transplantation and later that she had on holiday there again post transplantation, living in quite basic accommodation.

Clinical diagnosis

The patient had primarily luminal GI symptoms without any pulmonary symptoms of note since she presented in 2012. She went on to develop multi-organ failure ultimately; the diagnosis of Histoplasmosis was made at post-mortem examination.

Differential diagnosis

Includes Crohn's disease, as well as other atypical infective causes of colitis including human immunodeficiency virus, Yersinia, Tuberculosis and cytomegalovirus (all of which were excluded). Histoplasmosis could have also been considered within the differential diagnosis at this point, given the deterioration in spite of treatment as probable Crohn's disease, immunosuppression and the travel history to an endemic region for Histoplasmosis. Her initial travel history was reported as not having been abroad for many years.

Laboratory diagnosis

Although in the case, the diagnosis was only made at post mortem, a urinary Histoplasma antigen test is considered one of the most sensitive diagnostic methods for Histoplasmosis.

Imaging diagnosis

Computed Tomography imaging revealed colonic wall thickening, mucosal hyper-enhancement and submucosal oedema reflecting ulceration and inflammation of the ascending colon and hepatic flexure. Endoscopy revealed ileo-colonic ulceration with granulomatous inflammation.

Pathological diagnosis

Grocott's methanamine silver staining and Giemsa histochemical staining identifies *Histoplasma capsulatum* in biopsy material from affected sites (in this

case post mortem GI tract).

Treatment

Generally should be given to all those presenting with disseminated histoplasmosis. Initially treatment consists of intravenous amphotericin B, which can subsequently be stepped down to usually at least a 12-mo treatment course of an oral azole, *e.g.*, itraconazole.

Related reports

Histoplasmosis is a usually an asymptomatic fungal infection in > 99% of exposed people, with the small percentage who do manifest symptoms having primarily pulmonary symptoms. It is largely immunosuppressed patients (with AIDS or other immune deficiencies) who develop disseminated Histoplasmosis, with primary GI luminal disease being rarely reported in the literature, especially post liver transplantation.

Term explanation

Histoplasmosis is an endemic fungal infection acquired through inhalation of the spores of *Histoplasma capsulatum* after disruption of soil containing bat and bird guano in endemic regions.

Experiences and lessons

We note the importance of considering Histoplasmosis within the differential diagnosis for immunosuppressed patients presenting with a granulomatous enterocolitis even in non-endemic areas. Taking a full and detailed history of travel to an endemic region at any point in the past is especially important.

Peer-review

The article of Nikita Agrawal and collaborators shows fatal gastrointestinal histoplasmosis 15 years after orthotopic liver transplantation. This is a good piece of work, data are consistent, paper is well written and conclusions based on presented data.

REFERENCES

- Manos NE, Ferebee SH, Kerschbaum WF. Geographic variation in the prevalence of histoplasmin sensitivity. *Dis Chest* 1956; **29**: 649-668 [PMID: 13317782 DOI: 10.1137/chester.29.6.649]
- Colombo AL, Tobón A, Restrepo A, Queiroz-Telles F, Nucci M. Epidemiology of endemic systemic fungal infections in Latin America. *Med Mycol* 2011; **49**: 785-798 [PMID: 21539506 DOI: 10.3109/13693786.2011/577821]
- Loulergue P, Bastides F, Baudouin V, Chandenier J, Mariani-Kurkdjian P, Dupont B, Viard JP, Dromer F, Lortholary O. Literature review and case histories of *Histoplasma capsulatum* var. *duboisii* infections in HIV-infected patients. *Emerg Infect Dis* 2007; **13**: 1647-1652 [PMID: 18217546 DOI: 10.3201/eid1311.070665]
- Chakrabarti A, Slavin MA. Endemic fungal infections in the Asia-Pacific region. *Med Mycol* 2011; **49**: 337-344 [PMID: 21254966 DOI: 10.3109/13693786.2010.551426]
- McLeod DS, Mortimer RH, Perry-Keene DA, Allworth A, Woods ML, Perry-Keene J, McBride WJ, Coulter C, Robson JM. Histoplasmosis in Australia: report of 16 cases and literature review. *Medicine (Baltimore)* 2011; **90**: 61-68 [PMID: 21200187 DOI: 10.1097/MD.0b013e318206e499]
- Teixeira Mde M, Patané JS, Taylor ML, Gómez BL, Theodoro RC, de Hoog S, Engelthaler DM, Zancopé-Oliveira RM, Felipe MS, Barker BM. Worldwide Phylogenetic Distributions and Population Dynamics of the Genus *Histoplasma*. *PLoS Negl Trop Dis* 2016; **10**: e0004732 [PMID: 27248851 DOI: 10.1371/journal.pntd.0004732]
- Kauffman CA. Histoplasmosis: a clinical and laboratory update. *Clin Microbiol Rev* 2007; **20**: 115-132 [PMID: 17223625 DOI: 10.1128/CMR.00027-06]
- Wheat J, Sarosi G, McKinsey D, Hamill R, Bradsher R, Johnson P, Loyd J, Kauffman C. Practice guidelines for the management of patients with histoplasmosis. Infectious Diseases Society of America. *Clin Infect Dis* 2000; **30**: 688-695 [PMID: 10770731 DOI: 10.1086/313752]
- Psarros G, Kauffman CA. Colonic histoplasmosis: a difficult diagnostic problem. *Gastroenterol Hepatol (N Y)* 2007; **3**: 461-463 [PMID: 23329906]
- Kauffman CA, Israel KS, Smith JW, White AC, Schwarz J, Brooks GF. Histoplasmosis in immunosuppressed patients. *Am J Med* 1978; **64**: 923-932 [PMID: 350045 DOI: 10.1016/0002-9343(78)90445]
- Anand A. Diagnosis of systemic histoplasmosis in AIDS patients. *South Med J* 1993; **86**: 844-845 [PMID: 8322097 DOI: 10.1097/00007611-199307000-00030]
- Assi M, McKinsey DS, Driks MR, O'Connor MC, Bonacini M, Graham B, Manian F. Gastrointestinal histoplasmosis in the acquired immunodeficiency syndrome: report of 18 cases and literature review. *Diagn Microbiol Infect Dis* 2006; **55**: 195-201 [PMID: 16545932 DOI: 10.1016/j.diagmicrobio.2006.01.015]
- Freifeld A, Kauffman C, Pappas P. Endemic fungal infections among solid organ transplant recipients. Presented at Infectious Disease Society of America 43rd Annual Meeting; San Francisco, California; October 6-9, 2005. Abstract 737
- Assi M, Martin S, Wheat LJ, Hage C, Freifeld A, Avery R, Baddley JW, Vergidis P, Miller R, Andes D, Young JA, Hammoud K, Huprikar S, McKinsey D, Myint T, Garcia-Diaz J, Esguerra E, Kwak EJ, Morris M, Mullane KM, Prakash V, Burdette SD, Sandid M, Dickter J, Ostrander D, Antoun SA, Kaul DR. Histoplasmosis after solid organ transplant. *Clin Infect Dis* 2013; **57**: 1542-1549 [PMID: 24046304 DOI: 10.1093/cid/cit593]
- Kauffman CA, Freifeld AG, Andes DR, Baddley JW, Herwaldt L, Walker RC, Alexander BD, Anaissie EJ, Benedict K, Ito JI, Knapp KM, Lyon GM, Marr KA, Morrison VA, Park BJ, Patterson TF, Schuster MG, Chiller TM, Pappas PG. Endemic fungal infections in solid organ and hematopoietic cell transplant recipients enrolled in the Transplant-Associated Infection Surveillance Network (TRANSNET). *Transpl Infect Dis* 2014; **16**: 213-224 [PMID: 24589027 DOI: 10.1111/tid.12186]
- Kahi CJ, Wheat LJ, Allen SD, Sarosi GA. Gastrointestinal histoplasmosis. *Am J Gastroenterol* 2005; **100**: 220-231 [PMID: 15654803 DOI: 10.1111/j.1572-0241.2005.40823.x]
- Cappell MS, Mandell W, Grimes MM, Neu HC. Gastrointestinal histoplasmosis. *Dig Dis Sci* 1988; **33**: 353-360 [PMID: 3277825 DOI: 10.1007/bf01535762]
- Goodwin RA Jr, Shapiro JL, Thurman GH, Thurman SS, Des Prez RM. Disseminated histoplasmosis: clinical and pathologic correlations. *Medicine (Baltimore)* 1980; **59**: 1-33 [PMID: 7356773 DOI: 10.1097/00005792-198001000-00001]
- Wheat LJ, Connolly-Stringfield PA, Baker RL, Curfman MF, Eads ME, Israel KS, Norris SA, Webb DH, Zeckel ML. Disseminated histoplasmosis in the acquired immune deficiency syndrome: clinical findings, diagnosis and treatment, and review of the literature. *Medicine (Baltimore)* 1990; **69**: 361-374 [PMID: 2233233 DOI: 10.1097/00005792-199011000-00004]
- Lamps LW, Molina CP, West AB, Haggitt RC, Scott MA. The pathologic spectrum of gastrointestinal and hepatic histoplasmosis. *Am J Clin Pathol* 2000; **113**: 64-72 [PMID: 10631859 DOI: 10.1309/X0Y2-P3GY-TWE8-DM02]

P- Reviewer: Lu K, Hilmi I, Paramesh ASS, Zhang JJ S- Editor: Qi Y
L- Editor: A E- Editor: Lu YJ





Published by **Baishideng Publishing Group Inc**
7901 Stoneridge Drive, Suite 501, Pleasanton, CA 94588, USA
Telephone: +1-925-223-8242
Fax: +1-925-223-8243
E-mail: bpgoffice@wjgnet.com
Help Desk: <http://www.f6publishing.com/helpdesk>
<http://www.wjgnet.com>



ISSN 1007-9327

