

World Journal of *Gastroenterology*

World J Gastroenterol 2018 January 21; 24(3): 315-444



**MINIREVIEWS**

- 315 Use of direct-acting antiviral agents in hepatitis C virus-infected liver transplant candidates
Gadiparthi C, Cholankeril G, Perumpail BJ, Yoo ER, Satapathy SK, Nair S, Ahmed A

ORIGINAL ARTICLE**Basic Study**

- 323 circRNA_0046366 inhibits hepatocellular steatosis by normalization of PPAR signaling
Guo XY, Sun F, Chen JN, Wang YQ, Pan Q, Fan JG
- 338 Effect of *Lactobacillus rhamnosus* GG supernatant on serotonin transporter expression in rats with post-infectious irritable bowel syndrome
Cao YN, Feng LJ, Liu YY, Jiang K, Zhang MJ, Gu YX, Wang BM, Gao J, Wang ZL, Wang YM
- 351 Epidermal growth factor receptor-targeted immune magnetic liposomes capture circulating colorectal tumor cells efficiently
Kuai JH, Wang Q, Zhang AJ, Zhang JY, Chen ZF, Wu KK, Hu XZ
- 360 Hypoxia preconditioning protects Ca²⁺-ATPase activation of intestinal mucosal cells against R/I injury in a rat liver transplantation model
Ji ZP, Li YX, Shi BX, Zhuang ZN, Yang JY, Guo S, Xu XZ, Xu KS, Li HL

Case Control Study

- 371 Multi-parameter gene expression profiling of peripheral blood for early detection of hepatocellular carcinoma
Xie H, Xue YQ, Liu P, Zhang PJ, Tian ST, Yang Z, Guo Z, Wang HM

Retrospective Study

- 379 Clinical advantages of single port laparoscopic hepatectomy
Han JH, You YK, Choi HJ, Hong TH, Kim DG
- 387 Autoimmune liver disease-related autoantibodies in patients with biliary atresia
Pang SY, Dai YM, Zhang RZ, Chen YH, Peng XF, Fu J, Chen ZR, Liu YF, Yang LY, Wen Z, Yu JK, Liu HY

Observational Study

- 397 *Helicobacter pylori* and corpus gastric pathology are associated with lower serum ghrelin
Mantero P, Matus GS, Corti RE, Cabanne AM, Zerbetto de Palma GG, Marchesi Olid L, Piskorz MM, Zubillaga MB, Janjetic MA, Goldman CG

- 408** Metal stents placement for refractory pancreatic duct stricture in children

Jeong IS, Lee SH, Oh SH, Park DH, Kim KM

Prospective Study

- 415** Optimization of hepatobiliary phase delay time of Gd-EOB-DTPA-enhanced magnetic resonance imaging for identification of hepatocellular carcinoma in patients with cirrhosis of different degrees of severity

Wu JW, Yu YC, Qu XL, Zhang Y, Gao H

SYSTEMATIC REVIEWS

- 424** Epidemiology of inflammatory bowel disease in racial and ethnic migrant groups

Misra R, Faiz O, Munkholm P, Burisch J, Arebi N

CASE REPORT

- 438** Beneficial long term effect of a phosphodiesterase-5-inhibitor in cirrhotic portal hypertension: A case report with 8 years follow-up

Deibert P, Lazaro A, Stankovic Z, Schaffner D, Rössle M, Kreisel W

ABOUT COVER

Editorial board member of *World Journal of Gastroenterology*, Giuseppe Verlato, MD, PhD, Associate Professor, Department of Public Health and Community Medicine, Unit of Epidemiology and Medical Statistics, University of Verona, Verona 37134, Italy

AIMS AND SCOPE

World Journal of Gastroenterology (*World J Gastroenterol*, *WJG*, print ISSN 1007-9327, online ISSN 2219-2840, DOI: 10.3748) is a peer-reviewed open access journal. *WJG* was established on October 1, 1995. It is published weekly on the 7th, 14th, 21st, and 28th each month. The *WJG* Editorial Board consists of 642 experts in gastroenterology and hepatology from 59 countries.

The primary task of *WJG* is to rapidly publish high-quality original articles, reviews, and commentaries in the fields of gastroenterology, hepatology, gastrointestinal endoscopy, gastrointestinal surgery, hepatobiliary surgery, gastrointestinal oncology, gastrointestinal radiation oncology, gastrointestinal imaging, gastrointestinal interventional therapy, gastrointestinal infectious diseases, gastrointestinal pharmacology, gastrointestinal pathophysiology, gastrointestinal pathology, evidence-based medicine in gastroenterology, pancreatology, gastrointestinal laboratory medicine, gastrointestinal molecular biology, gastrointestinal immunology, gastrointestinal microbiology, gastrointestinal genetics, gastrointestinal translational medicine, gastrointestinal diagnostics, and gastrointestinal therapeutics. *WJG* is dedicated to become an influential and prestigious journal in gastroenterology and hepatology, to promote the development of above disciplines, and to improve the diagnostic and therapeutic skill and expertise of clinicians.

INDEXING/ABSTRACTING

World Journal of Gastroenterology (*WJG*) is now indexed in Current Contents[®]/Clinical Medicine, Science Citation Index Expanded (also known as SciSearch[®]), Journal Citation Reports[®], Index Medicus, MEDLINE, PubMed, PubMed Central and Directory of Open Access Journals. The 2017 edition of Journal Citation Reports[®] cites the 2016 impact factor for *WJG* as 3.365 (5-year impact factor: 3.176), ranking *WJG* as 29th among 79 journals in gastroenterology and hepatology (quartile in category Q2).

EDITORS FOR THIS ISSUE

Responsible Assistant Editor: Xiang Li
Responsible Electronic Editor: Yan Huang
Proofing Editor-in-Chief: Lian-Sheng Ma

Responsible Science Editor: Ze-Mao Gong
Proofing Editorial Office Director: Jin-Lei Wang

NAME OF JOURNAL
World Journal of Gastroenterology

ISSN
ISSN 1007-9327 (print)
ISSN 2219-2840 (online)

LAUNCH DATE
October 1, 1995

FREQUENCY
Weekly

EDITORS-IN-CHIEF
Damian Garcia-Olmo, MD, PhD, Doctor, Professor, Surgeon, Department of Surgery, Universidad Autonoma de Madrid; Department of General Surgery, Fundacion Jimenez Diaz University Hospital, Madrid 28040, Spain

Stephen C Strom, PhD, Professor, Department of Laboratory Medicine, Division of Pathology, Karolinska Institutet, Stockholm 141-86, Sweden

Andrzej S Tarnawski, MD, PhD, DSc (Med), Professor of Medicine, Chief Gastroenterology, VA Long Beach Health Care System, University of California, Irvine, CA, 5901 E. Seventh Str., Long Beach,

CA 90822, United States

EDITORIAL BOARD MEMBERS
All editorial board members resources online at <http://www.wjgnet.com/1007-9327/editorialboard.htm>

EDITORIAL OFFICE
Ze-Mao Gong, Director
World Journal of Gastroenterology
Baishideng Publishing Group Inc
7901 Stoneridge Drive, Suite 501,
Pleasanton, CA 94588, USA
Telephone: +1-925-2238242
Fax: +1-925-2238243
E-mail: editorialoffice@wjgnet.com
Help Desk: <http://www.f6publishing.com/helpdesk>
<http://www.wjgnet.com>

PUBLISHER
Baishideng Publishing Group Inc
7901 Stoneridge Drive, Suite 501,
Pleasanton, CA 94588, USA
Telephone: +1-925-2238242
Fax: +1-925-2238243
E-mail: bpgoffice@wjgnet.com
Help Desk: <http://www.f6publishing.com/helpdesk>
<http://www.wjgnet.com>

PUBLICATION DATE
January 21, 2018

COPYRIGHT
© 2018 Baishideng Publishing Group Inc. Articles published by this Open-Access journal are distributed under the terms of the Creative Commons Attribution Non-commercial License, which permits use, distribution, and reproduction in any medium, provided the original work is properly cited, the use is non commercial and is otherwise in compliance with the license.

SPECIAL STATEMENT
All articles published in journals owned by the Baishideng Publishing Group (BPG) represent the views and opinions of their authors, and not the views, opinions or policies of the BPG, except where otherwise explicitly indicated.

INSTRUCTIONS TO AUTHORS
Full instructions are available online at <http://www.wjgnet.com/bpg/gerinfo/204>

ONLINE SUBMISSION
<http://www.f6publishing.com>

Basic Study

Epidermal growth factor receptor-targeted immune magnetic liposomes capture circulating colorectal tumor cells efficiently

Jing-Hua Kuai, Qing Wang, Ai-Jun Zhang, Jing-Yu Zhang, Zheng-Feng Chen, Kang-Kang Wu, Xiao-Zhen Hu

Jing-Hua Kuai, Qing Wang, Ai-Jun Zhang, Jing-Yu Zhang, Zheng-Feng Chen, Kang-Kang Wu, Department of Gastroenterology, Qilu Hospital of Shandong University, Qingdao 266035, Shandong Province, China

Xiao-Zhen Hu, Department of General Surgery, Qilu Hospital of Shandong University, Qingdao 266035, Shandong Province, China

ORCID number: Jing-Hua Kuai (0000-0002-0529-0559); Qing Wang (0000-0001-8645-801X); Ai-Jun Zhang (0000-0002-1944-4352); Jing-Yu Zhang (0000-0002-8102-9870); Zheng-Feng Chen (0000-0002-3643-4340); Kang-Kang Wu (0000-0003-0175-0439); Xiao-Zhen Hu (0000-0002-7233-5286).

Author contributions: Kuai JH, Wang Q, Zhang AJ, Zhang JY, Chen ZF, Wu KK, and Hu XZ designed the research; Kuai JH, Wang Q, and Hu XZ performed the research; Zhang AJ and Zhang JY contributed new reagents/analytic tools; Kuai JH, Chen ZF, and Wu KK analyzed the data; and Kuai JH and Hu XZ wrote the paper.

Institutional review board statement: The study was reviewed and approved by the Institutional Review Board of Qilu Hospital of Shandong University.

Conflict-of-interest statement: All the authors declare that there is no conflict of interest to disclose.

Open-Access: This article is an open-access article which was selected by an in-house editor and fully peer-reviewed by external reviewers. It is distributed in accordance with the Creative Commons Attribution Non Commercial (CC BY-NC 4.0) license, which permits others to distribute, remix, adapt, build upon this work non-commercially, and license their derivative works on different terms, provided the original work is properly cited and the use is non-commercial. See: <http://creativecommons.org/licenses/by-nc/4.0/>

Manuscript source: Unsolicited manuscript

Correspondence to: Xiao-Zhen Hu, PhD, Chief Doctor,

Department of General Surgery, Qilu Hospital of Shandong University, No. 758, Hefei Road, Qingdao 266035, Shandong Province, China. hu.xz@qilu.edu.cn
Telephone: +86-532-66850782
Fax: +86-532-66850532

Received: September 8, 2017

Peer-review started: September 8, 2017

First decision: September 20, 2017

Revised: November 27, 2017

Accepted: December 4, 2017

Article in press: December 4, 2017

Published online: January 21, 2018

Abstract

AIM

To compare the capacity of newly developed epidermal growth factor receptor (EGFR)-targeted immune magnetic liposomes (EILs) vs epithelial cell adhesion molecule (EpCAM) immunomagnetic beads to capture colorectal circulating tumor cells (CTCs).

METHODS

EILs were prepared using a two-step method, and the magnetic and surface characteristics were confirmed. The efficiency of capturing colorectal CTCs as well as the specificity were compared between EILs and EpCAM magnetic beads.

RESULTS

The obtained EILs had a lipid nanoparticle structure similar to cell membrane. Improved binding with cancer cells was seen in EILs compared with the method of coupling nano/microspheres with antibody. The binding increased as the contact time extended. Compared with EpCAM immunomagnetic beads, EILs captured

more CTCs in peripheral blood from colorectal cancer patients. The captured cells showed consistency with clinical diagnosis and pathology. Mutation analysis showed same results between captured CTCs and cancer tissues.

CONCLUSION

EGFR antibody-coated magnetic liposomes show high efficiency and specificity in capturing colorectal CTCs.

Key words: Epidermal growth factor receptor; Immune magnetic liposomes; Epithelial cell adhesion molecule; Circulating tumor cells; Colorectal cancer

© **The Author(s) 2018.** Published by Baishideng Publishing Group Inc. All rights reserved.

Core tip: Epidermal growth factor receptor-targeted immune magnetic liposomes (EILs) were prepared by a two-step method. The binding with capturing tumor cells (CTCs) in peripheral blood from colorectal cancer patients was compared between EILs and epithelial cell adhesion molecule (EpCAM) immunomagnetic beads. We found that EILs captured more CTCs than EpCAM immunomagnetic beads with a higher efficiency and specificity.

Kuai JH, Wang Q, Zhang AJ, Zhang JY, Chen ZF, Wu KK, Hu XZ. Epidermal growth factor receptor-targeted immune magnetic liposomes capture circulating colorectal tumor cells efficiently. *World J Gastroenterol* 2018; 24(3): 351-359 Available from: URL: <http://www.wjgnet.com/1007-9327/full/v24/i3/351.htm> DOI: <http://dx.doi.org/10.3748/wjg.v24.i3.351>

INTRODUCTION

Metastasis contributes most to cancer-related deaths in patients with solid tumors. Mounting evidence suggests that circulating tumor cells (CTCs), which can shed from a primary tumor mass at the earliest stages of malignant progression, play a critical role in cancer metastasis^[1-3]. As a "liquid biopsy" for tumor, CTCs provide an insight into tumor biology in a critical window where intervention could actually make a difference^[4-7].

Detection and characterization of CTCs are challenging owing to their extreme scarcity in blood^[8-11]. Several methods have been evolving, including immunomagnetic separation based on capture reagent-labeled magnetic beads, microfluidics-based technologies that enhance cell-surface contacts, and microfilter devices that isolate CTCs based on size difference^[9,12-14]. However, the sensitivity of the aforementioned methods relies greatly on the degree of enrichment of CTCs and current techniques used are far from satisfactory^[15-18].

Clinically, the CellSearch System, approved by the United States Food and Drug Administration recently, is deemed as the standard method^[19,20]. Epithelial cell

adhesion molecule (EpCAM) antibody is used to couple the magnetic beads in the system. However, EpCAM positive cells have been found in healthy persons^[21]. Moreover, epithelial-mesenchymal transition (EMT), which is vital for metastasis, could result in loss of epithelial antigens in some CTCs^[22-26].

Recently, a new method, in which an EGFR antibody-coupled magnetic liposome with a bilayer membrane structure was used, was developed^[27,28]. Studies showed that this method had a significant improvement in cell-capture efficiency owing to its enhanced interactions between the deformable antibody receptor-lipid bilayer structure and nanoscale cellular surface components^[29,30]. Such a high-affinity cell assay can be employed to recover cancer cells from spiked whole-blood samples in a stationary magnetic separation device^[31,32]. On the basis of this stationary cell-capture assay, we hypothesized that further improvement of cell-capture efficiency can be achieved by increasing the surface activity sites of magnetic beads for tumor cells.

MATERIALS AND METHODS

Materials

Chitosan (molecular weight, 5×10^4) was supplied by Yuhuan Aoxing Biochemistry (Zhejiang, China) with a deacetylation degree of above 99%. Octadecyl quaternized carboxymethyl chitosan (OQCMC), hydrophobic magnetic nanoparticles (BM), and hydrophilic magnetic nanoparticles (LM) were all prepared in our lab. All other chemicals were of reagent grade and were used as received. The study was approved by local institutional review board and informed consent was obtained from all recruited patients.

Preparation of EGFR-targeted immune liposomes

Modified DSPE-PEG-EGFR (1.0 mg) was weighed. After 3.0 mg of 1,2-dioleoyl-sn-glycero-3-phosphocholine (DOPC), 2.0 mg of OQCMC, and 6.0 mg of cholesterol (Chol) were dissolved in 5.0 mL of dichloromethane (CH_2Cl_2), bare magnetic nanobeads (3 mL) were added and incubated for 10 min, followed by the addition of a certain volume of phosphate buffer solution (PBS, pH = 7.4). The echo probe was used for phacoemulsification during ice bathing. After formation of a uniform emulsion, the organic phase was removed by rotary evaporation. After magnetic separation, PBS was used for washing for three times. At this stage, immune magnetic liposomes (IMLs) were obtained.

A certain quantity of IMLs was dispersed in PBS solution. After that, EDC was added, vortexed, and incubated for 3 h. After the unreacted coupling agent was removed, EGFR-targeted immune liposomes (EILs) were obtained.

Characterization of EILs

The particle size and distribution were determined

by quasielastic laser light scattering with a Malvern Zetasizer (Malvern Instruments, United Kingdom) at 25 °C. About 0.2 mL of EIL suspension were diluted in 2.5 mL water immediately after preparation. Each experiment was repeated three times. Zeta potential was measured using a Malvern Zetasizer (Malvern Instruments). Zeta limits ranged from -150 to 150 V. The magnetic properties of EILs were determined through using a vibrating samples magnetometer (LDJ9600-1, LDJ Electronics Inc., United States).

Recognition of colorectal cancer HT-29 cells by EILs *in vitro*

HT-29 cells (8×10^4) at logarithmic phase were plated on sterile round cover glasses in a 24-well plate with 0.5 mL of culture medium containing 10% serum and incubated at 37 °C with 5% CO₂ overnight. When cell confluence reached > 70%, 20 µL of fluorescein (FITC)-labeled EILs were added. After culture for 30 min, the liquid was discarded and the pellet was washed with PBS three times before shaking for 2 min once. After that, 4% paraformaldehyde was added for cell fixation for 20 min, followed by washing with PBS three times again. Then, DAPI (4',6-diamidino-2-phe-nylindole) dye liquor was added in each well and incubated for 10 min away from light to stain nuclei. After washing three times with PBS, the cell membrane probe Dil was added in each well and incubated for 10 min. After washing three times with PBS, the cover glasses were removed. The fluorescence decay sealing agents were adhered on glass slides. The distributions of the immune magnetic beads inside and outside the cell membrane were observed under a laser confocal microscope.

Recognition of CTCs

A three-color immunocytochemistry method was applied to identify and enumerate CTCs from non-specifically trapped white blood cells (WBCs). The markers included PE-labeled anti-CD45 (a marker for WBCs), FITC-labeled anti-CK19 (Cytokeratin, a protein marker for epithelial cells), and DAPI for nuclear staining. Fluorescence microscopy was employed to quantify DAPI intensity and expression levels of CK19 and CD45 in individual cells. The combined information was utilized to delineate CTCs (DAPI+/CK+/CD45-, cell size > 8 µm) from WBCs (DAPI+/CK-/CD45+, size < 15 µm) and cellular debris (DAPI-).

Clinical application of CTC capture and identification in colorectal cancer patients

The CTC capture and identification methods were similar to those of CellSearch, but manually operated instead. Specifically, whole blood (7.5 mL) was collected and centrifuged at 1000 rpm/min for 10 min. After that, the upper-middle layer was transferred to a new tube and equal volume of PBS was added and mixed

evenly. Then, 120 µL of EILs were added and incubated at room temperature for 30 min. The mixture was mixed once every 10 min and the tube was inserted into the magnetic separation frame to allow absorbing for 5 min. After that, the supernatant was removed and the tube was taken out. The captured CTCs were washed once with PBS, followed by staining with 30 µL of DAPI, 30 µL of CK19-FITC, and 10 µL of CD45-PE in a mixture for 15 min. Deionized water was then used to wash twice in the magnetic separation frame. Finally, 30 µL of deionized water was added into the tube for re-suspending the cells. The blending liquid was then evenly coated in the center of a slide. After the liquid drop was dried, the cells were photographed and counted under a fluorescent microscope.

DNA extraction and mutation analysis in CTCs

The captured cells were put into a 10 µL PCR buffer with proteinase K and incubated at 60 °C overnight. After inactivating proteinase K at 95 °C for 10 min, agarose gel electrophoresis and sequencing were performed to determine mutations of the *KRAS* gene. Meanwhile, DNA extraction from peripheral blood of seven colorectal cancer patients was performed to analyze the *KRAS* mutations.

Statistical analysis

Statistical analyses were performed using Prism software (GraphPad Software, Inc., La Jolla, CA, United States). An unpaired Student's *t*-test was used to compare hydrodynamic size, diffuse efficient, and zeta potential between IMLs and EILs. A paired Student's *t*-test was used to detect differences in the number of CTCs captured by EpCAM immunomagnetic beads in comparison with EILs. A *P*-value < 0.05 was considered statistically significant.

RESULTS

Process of preparing EILs

A two-step method was used to prepare EILs, which was achieved through encapsulating hydrophilic or hydrophobic magnetic nanoparticles into polymeric surfactant/cholesterol vesicles. Figure 1 illustrates the preparation procedure. The as-synthesized LM can be encapsulated into the aqueous core of polymeric liposomes. Furthermore, evaporation of organic solvent can transfer BM into the aqueous phase by an interfacial process driven by the hydrophobic van der Waals interactions between the primary alkane of the stabilizing ligand in oleic acid and the secondary alkane of the OQCMC. In addition, Chol can modulate membrane fluidity, elasticity, and permeability by stabilizing the polymeric liposome system.

Characterization of EILs

Figure 2A shows the hydrodynamic diameters of

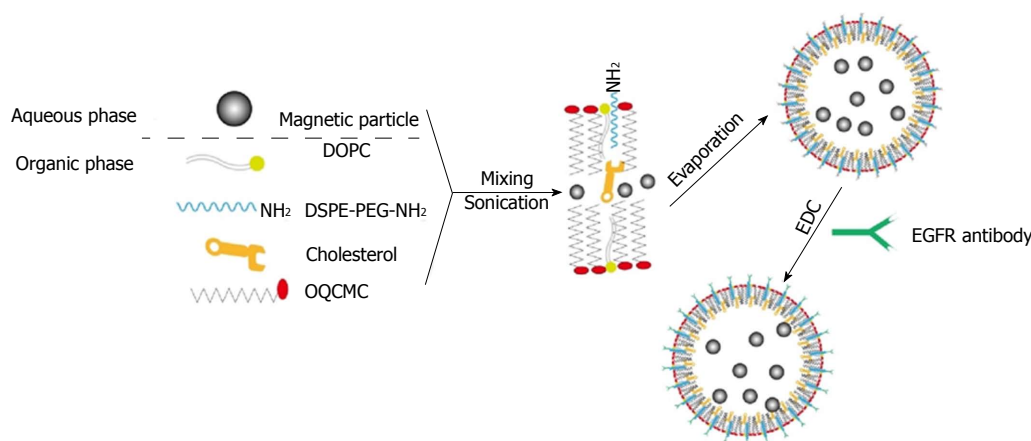


Figure 1 Schematic diagram showing the preparation of epidermal growth factor receptor-targeted immune magnetic liposomes with hydrophilic and hydrophobic magnetic nanoparticles. EGFR: Epidermal growth factor receptor.

IMLs and EILs. The results indicated that the mean hydrodynamic size of IMLs was 83.1 ± 1.5 nm, whereas the diffusion coefficient was 1.3758×10^{-14} m²/s. The mean hydrodynamic size of EILs was 104.5 ± 1.3 nm with a diffusion coefficient of 1.5870×10^{-14} m²/s.

After encapsulating with OQCMC/Chol polymeric liposomes, the surface zeta potential of hydrophilic Fe₃O₄ nanoparticles could reach +41 mv. After reaction with EGFR antibody, the surface zeta potential of IMLs could reach +37 mv. There was no significant difference in zeta potential between them (Figure 2B).

Magnetic and surface characterization of EILs

Figure 2C shows the magnetization curves of IML and EILs at room temperature. Both samples showed a typical superparamagnetic behavior without any hysteresis loop. The saturation magnetization values of IMLs and EILs were 40 emu/g and 20 emu/g at 300 K, respectively. The volume fraction of magnetite can be further increased by increasing the number of layer of lipid coating.

Characteristics of CTCs

As shown in Figure 3A, the captured CTCs were DAPI+/CK+/CD45-, with cell sizes larger than 8 μ m, which are consistent with the CTC criterion. In Figure 3B, the magnetic bead was stained blue by Prussian blue.

Recognition of CTCs by EpCAM magnetic beads and EILs

Blood samples from seven colorectal cancer patients without chemotherapy were collected for CTC capture analysis. For each patient, 7.5 mL of blood was divided equally for capturing CTCs by EpCAM magnetic beads and EILs. The number of CTCs captured by EpCAM magnetic beads was 15 to 79 and that by EILs was 5 to 181. A significant difference was found between the two methods. As shown in Figure 4, the numbers of

CTCs captured by EILs in patients 1, 2, 4, 5, 6, and 7 were higher than those captured by EpCAM magnetic balls.

Mutations analysis in CTCs

KRAS has been recognized as a marker for diagnosis and treatment of colorectal cancer. Mutations of KRAS in CTCs from the seven colorectal cancer patients were compared. Five of the seven DNA samples were successfully amplified and sequenced. We further amplified and sequenced their tumor tissue DNA, and found the results were coincident (Figure 5 and Table 1).

DISCUSSION

In the current study, we developed new EGFR-targeted EILs for capturing colorectal CTCs. The EILs obtained showed similarity to cell membrane and could more efficiently capture colorectal CTCs compared with EpCAM immunomagnetic beads.

The higher efficiency of EILs compared to EpCAM immunomagnetic beads might be explained by the following facts. First, the obtained IMLs displayed a lipid nanoparticle structure similar to cell membrane, which can enhance contact with cancer cells^[33-35]. Second, characteristics of the EILs were similar to those of IMLs (including mean hydrodynamic size, zeta potential, magnetization curves, and saturation magnetization value), which suggested that EILs could effectively bind CTC cells^[30,32,36]. Third, expression of EpCAM on CTCs is dynamic^[24,37]. Some cells might not express EpCAM and did not get captured using EpCAM immunomagnetic beads^[22,38,39].

However, we should not ignore that in one patient, the number of CTCs captured by EILs was lower than that by EpCAM magnetic beads. This patient had stage I disease and the number of CTCs in the peripheral blood might be much fewer than those at advanced stages, which may be below the detection limit of EILs.

Table 1 Comparison of gene mutations detected in DNA from circulating tumor cells and that from tissues

Sample ID	Tumor type	Clinical stage	CTC DNA		Tissue DNA	
			<i>KRAS</i> Exon 1	<i>KRAS</i> Exon 2	<i>KRAS</i> Exon 1	<i>KRAS</i> Exon 2
1	CRC	IV	WT	WT	WT	WT
2	CRC	III	WT	WT	WT	WT
3	CRC	I	NAP	NAP	WT	WT
4	CRC	IV	WT	WT	WT	WT
5	CRC	IV	WT	WT	WT	WT
6	CRC	II	NAP	NAP	WT	WT
7	CRC	III	WT	WT	WT	WT

CTCs: Circulating tumor cells; CRC: Colorectal cancer; WT: Wild type; NAP: Not amplified.

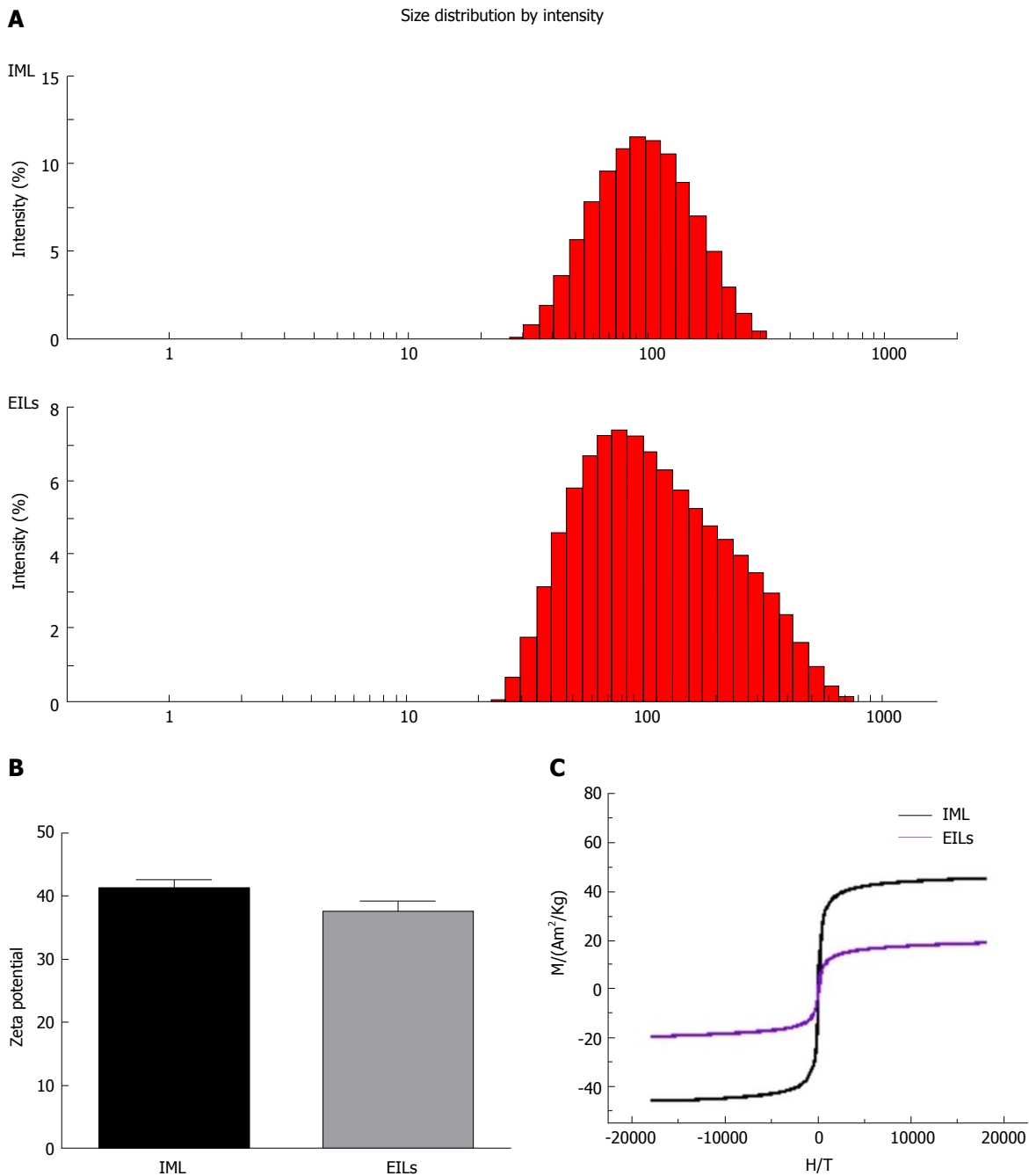


Figure 2 Characterization of epidermal growth factor receptor-targeted immune magnetic liposomes. The hydrodynamic diameter (A), zeta potential (B), and magnetization curves (C) at 300 K of magnetic polymeric liposomes are shown. IML: Immune magnetic liposomes; EGFR: Epidermal growth factor receptor; EILs: EGFR-targeted immune magnetic liposomes.

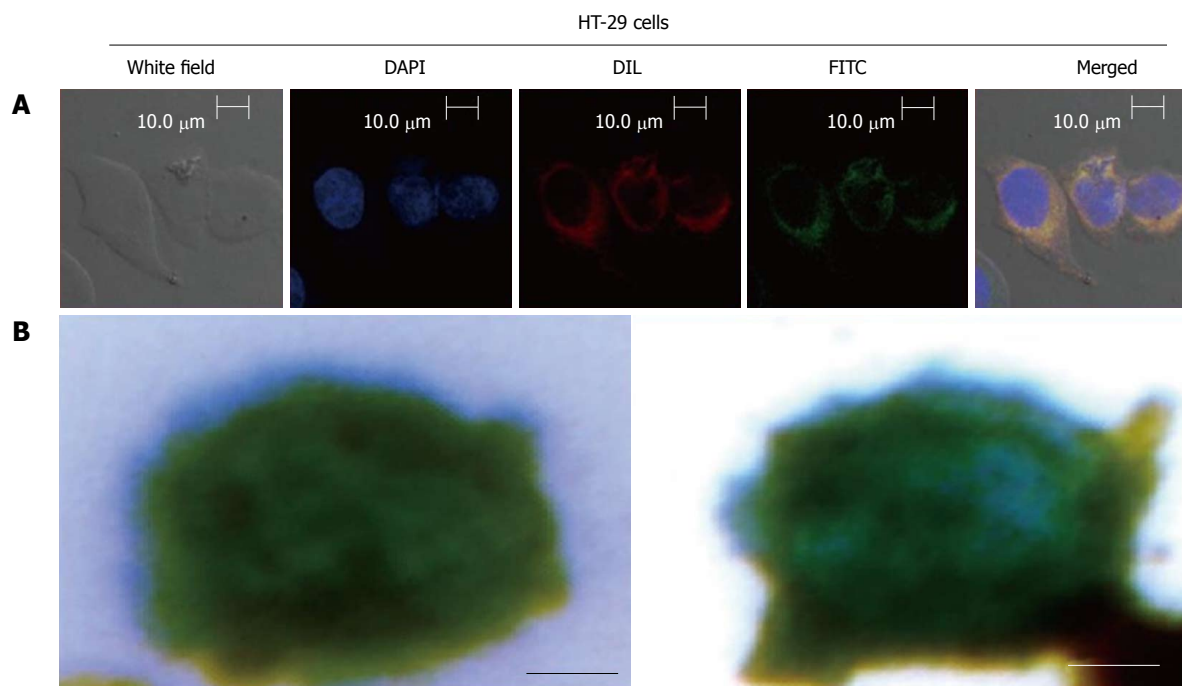


Figure 3 Size of the captured circulating tumor cells and color of stained magnetic beads. A: Localization and distribution of EILs in HT-29 cells. Cells were cultured in FITC-labeled EILs-containing medium on bottom of a glass dish (35 mm dish with 14 mm bottom wells) for 30 min followed by treatment with DAPI dye and Dil dye for 5-10 min, separately, and subsequent examination by confocal microscopy; B: Prussian blue staining of EGFR IMLs with HT-29 Cells. (Scale bar: 5 μ m). IMLs: Immune magnetic liposomes; EILs: EGFR-targeted immune magnetic liposomes.

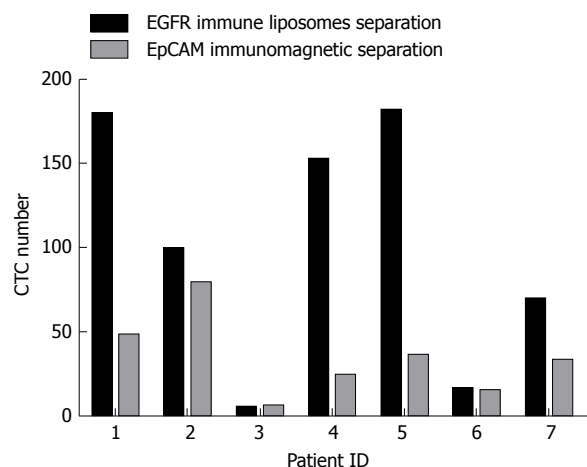


Figure 4 The number of circulating tumor cells captured by epithelial cell adhesion molecule magnetic beads and epidermal growth factor receptor-targeted immune magnetic liposomes. Side-by-side representation of circulating tumor cell (CTC) enumeration results obtained from our integrated CTC-capture method (normalized to 7.5 mL of blood) with EGFR immune magnetic liposomes and epithelial cell adhesion molecule (EpCAM) immunomagnetic beads on matched samples from seven patients.

Other factors such as operating mistakes might also be possible explanations. More studies with larger sample sizes are needed to validate the current findings.

The feasibility of capturing of CTCs by EILs was evaluated by mutation analysis, especially the *KRAS* gene. Five of the seven DNA samples were successfully amplified and sequenced. We found that mutations detected in CTCs were the same as those in tumor

tissues. Considering that *KRAS* was reported to be a marker for diagnosis and predicting treatment outcomes of colorectal cancer^[28,40-42], the current results suggested that detecting *KRAS* mutations in CTCs through EILs capture might be of practical use.

In 2005, Kullberg and colleagues first reported the use of magnetic liposomes modified by EGFR antibody for drug delivery to cancer cells^[31]. Recently, Wang *et al.*^[43] found that magnetic liposomes modified by dual antibody (the nuclear protein Ki-67 and EGFR antibody) were potentially useful in helping treat tumor cells with proliferative characteristics. Our current study further confirmed the feasibility of EILs in capturing CTCs. These findings suggested that EGFR-targeted magnetic liposomes might be of more clinical significance in the future.

There were at least two limitations in this study. First, the number of patients included in our study was small. Second, all of the colorectal cancer patients included in the study were EGFR positive, which might cause a great bias to our results as a previous study reported that the sensitivity and specificity of EGFR were lower than those of EpCAM for colorectal cancer patients^[44]. Liu *et al.*^[45] also reported that the positive expression rate of EGFR was only 64% (45/70). Future studies might include several specific molecular targets to improve efficiency^[46]. For example, Myung *et al.*^[47] successfully enhanced tumor cell isolation by a biomimetic combination of E-selectin and anti-EpCAM. Besides, combining mechanical and molecular filtration seems to be another choice to better enrich CTCs^[48-51].

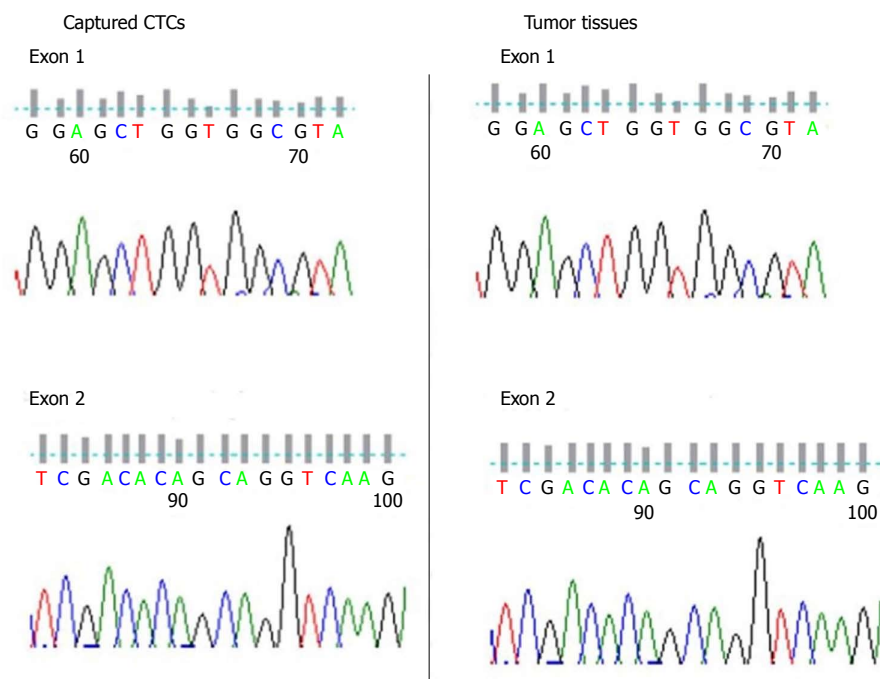


Figure 5 Gene mutation test of *KRAS* for captured circulating tumor cells and tumor tissue. CTCs: Circulating tumor cells.

In conclusion, we designed a new CTC-capture platform that combines a high-affinity cell enrichment assay based on cell capture agent (antibody)-coated nanostructured substrates and a cell membrane structure capable of improving CTC/substrate contact frequency. The synergistic effects led to better CTC capture performance in clinical blood samples compared with traditional EpCAM immunomagnetic beads. The significantly improved sensitivity of our new CTC capture technology might be useful in early detection of cancer metastasis and isolation of rare populations of cells.

ARTICLE HIGHLIGHTS

Research background

Metastasis contributes most to cancer-related deaths in patients with solid tumors. Mounting evidence suggests that circulating tumor cells (CTCs) which can shed from a primary tumor mass at the earliest stages of malignant progression, play a critical role in cancer metastasis. Detection and characterization of CTCs are challenging owing to their extreme scarcity in blood. However, the sensitivity of the aforementioned methods relies greatly on the degree of enrichment of CTCs and current techniques used are far from satisfactory. Recently, a new method, in which an epidermal growth factor receptor (EGFR) antibody-coupled magnetic liposome with a bilayer membrane structure was used, was developed. Studies showed that this method had a significant improvement in cell-capture efficiency owing to its enhanced interactions between the deformable antibody receptor-lipid bilayer structure and nanoscale cellular surface components. Such a high-affinity cell assay can be employed to recover cancer cells from spiked whole-blood samples in a stationary magnetic separation device.

Research motivation

The main topics are to compare the capacity of newly developed EGFR-targeted immune magnetic liposomes (EILs) vs epithelial cell adhesion

molecule (EpCAM) immunomagnetic beads to capture colorectal circulating tumor cells (CTCs).

Research objectives

The main objectives were to compare the capacity of newly developed EILs vs EpCAM immunomagnetic beads to CTCs. And the significantly improved sensitivity of our new CTC capture technology might be useful in early detection of cancer metastasis and isolation of rare populations of cells.

Research methods

EILs were prepared using a two-step method, and the magnetic and surface characteristics were confirmed. The efficiency and specificity of EILs and EpCAM magnetic beads in capturing colorectal CTCs were compared. Statistical analyses were performed using Prism software (GraphPad Software, Inc., La Jolla, CA, United States). An unpaired Student's *t*-test was used to compare hydrodynamic size, diffuse efficient, and zeta potential between IMLs and EILs. A paired Student's *t*-test was used to detect differences in the number of CTCs captured by EpCAM immunomagnetic beads in comparison with EILs. A *P*-value < 0.05 was considered statistically significant.

Research results

The obtained EILs have a lipid nanoparticle structure similar to cell membrane. Improved binding with cancer cells was seen in EILs compared with the method of coupling nano/microspheres with antibody. The binding increased as the contact time extended. Compared with EpCAM immunomagnetic beads, EILs captured more CTCs in peripheral blood from colorectal cancer patients. The captured cells showed consistency with clinical diagnosis and pathology. Mutation analysis showed same results between captured CTCs and cancer tissues.

Research conclusions

Improved binding with cancer cells was seen in EILs compared with the method of coupling nano/microspheres with antibody. EILs were prepared using a two-step method and the magnetic and surface characteristics were confirmed. The efficiency and specificity in capturing colorectal CTCs were compared between EILs and EpCAM magnetic beads. EGFR-coated magnetic liposomes showed high efficiency and specificity in capturing colorectal CTCs. The captured cells

showed consistency with clinical diagnosis and pathology. Mutation analysis showed same results between captured CTCs and cancer tissues. The significantly improved sensitivity of our new CTC capture technology might be useful in early detection of cancer metastasis and isolation of rare populations of cells.

Research perspectives

The significantly improved sensitivity of our new CTC capture technology might be useful in early detection of cancer metastasis and isolation of rare populations of cells.

REFERENCES

- Pantel K, Speicher MR. The biology of circulating tumor cells. *Oncogene* 2016; **35**: 1216-1224 [PMID: 26050619 DOI: 10.1038/onc.2015.192]
- Joosse SA, Gorges TM, Pantel K. Biology, detection, and clinical implications of circulating tumor cells. *EMBO Mol Med* 2015; **7**: 1-11 [PMID: 25398926 DOI: 10.15252/emmm.201303698]
- Hardingham JE, Grover P, Winter M, Hewett PJ, Price TJ, Thierry B. Detection and Clinical Significance of Circulating Tumor Cells in Colorectal Cancer--20 Years of Progress. *Mol Med* 2015; **21** Suppl 1: S25-S31 [PMID: 26605644 DOI: 10.2119/molmed.2015.00149]
- Li N, Xiao T, Zhang Z, He R, Wen D, Cao Y, Zhang W, Chen Y. A 3D graphene oxide microchip and a Au-enwrapped silica nanocomposite-based supersandwich cytosensor toward capture and analysis of circulating tumor cells. *Nanoscale* 2015; **7**: 16354-16360 [PMID: 26391313 DOI: 10.1039/c5nr04798f]
- Rink M, Chun FK, Dahlem R, Soave A, Minner S, Hansen J, Stoupiec M, Coith C, Kluth LA, Ahyai SA, Friedrich MG, Shariat SF, Fisch M, Pantel K, Riethdorf S. Prognostic role and HER2 expression of circulating tumor cells in peripheral blood of patients prior to radical cystectomy: a prospective study. *Eur Urol* 2012; **61**: 810-817 [PMID: 22277196 DOI: 10.1016/j.eururo.2012.01.017]
- Jansson S, Bendahl PO, Larsson AM, Aaltonen KE, Rydén L. Prognostic impact of circulating tumor cell apoptosis and clusters in serial blood samples from patients with metastatic breast cancer in a prospective observational cohort. *BMC Cancer* 2016; **16**: 433 [PMID: 27390845 DOI: 10.1186/s12885-016-2406-y]
- Gazzaniga P, Raimondi C, Nicolazzo C, Carletti R, di Gioia C, Gradilone A, Cortesi E. The rationale for liquid biopsy in colorectal cancer: a focus on circulating tumor cells. *Expert Rev Mol Diagn* 2015; **15**: 925-932 [PMID: 25959553 DOI: 10.1586/14737159.2015.1045491]
- Lee GW, Kim JY, Koh EH, Kang D, Choi DS, Maeng KY, Lee JS. Plasma human mammaglobin mRNA associated with poor outcome in patients with breast cancer. *Genet Mol Res* 2012; **11**: 4034-4042 [PMID: 23212340 DOI: 10.4238/2012.November.28.2]
- Alix-Panabières C, Pantel K. Technologies for detection of circulating tumor cells: facts and vision. *Lab Chip* 2014; **14**: 57-62 [PMID: 24145967 DOI: 10.1039/c3lc50644d]
- Chen JF, Zhu Y, Lu YT, Hodara E, Hou S, Agopian VG, Tomlinson JS, Posadas EM, Tseng HR. Clinical Applications of NanoVelcro Rare-Cell Assays for Detection and Characterization of Circulating Tumor Cells. *Theranostics* 2016; **6**: 1425-1439 [PMID: 27375790 DOI: 10.7150/tno.15359]
- Lin M, Chen JF, Lu YT, Zhang Y, Song J, Hou S, Ke Z, Tseng HR. Nanostructure embedded microchips for detection, isolation, and characterization of circulating tumor cells. *Acc Chem Res* 2014; **47**: 2941-2950 [PMID: 25111636 DOI: 10.1021/ar5001617]
- Lu Y, Liang H, Yu T, Xie J, Chen S, Dong H, Sinko PJ, Lian S, Xu J, Wang J, Yu S, Shao J, Yuan B, Wang L, Jia L. Isolation and characterization of living circulating tumor cells in patients by immunomagnetic negative enrichment coupled with flow cytometry. *Cancer* 2015; **121**: 3036-3045 [PMID: 25945459 DOI: 10.1002/cncr.29444]
- Qian W, Zhang Y, Chen W. Capturing Cancer: Emerging Microfluidic Technologies for the Capture and Characterization of Circulating Tumor Cells. *Small* 2015; **11**: 3850-3872 [PMID: 25993898 DOI: 10.1002/smll.201403658]
- Zheng S, Lin HK, Lu B, Williams A, Datar R, Cote RJ, Tai YC. 3D microfilter device for viable circulating tumor cell (CTC) enrichment from blood. *Biomed Microdevices* 2011; **13**: 203-213 [PMID: 20978853 DOI: 10.1007/s10544-010-9485-3]
- Ankeny JS, Court CM, Hou S, Li Q, Song M, Wu D, Chen JF, Lee T, Lin M, Sho S, Rochefort MM, Girgis MD, Yao J, Wainberg ZA, Muthusamy VR, Watson RR, Donahue TR, Hines OJ, Reber HA, Graeber TG, Tseng HR, Tomlinson JS. Circulating tumour cells as a biomarker for diagnosis and staging in pancreatic cancer. *Br J Cancer* 2016; **114**: 1367-1375 [PMID: 27300108 DOI: 10.1038/bjc.2016.121]
- Wang FB, Yang XQ, Yang S, Wang BC, Feng MH, Tu JC. A higher number of circulating tumor cells (CTC) in peripheral blood indicates poor prognosis in prostate cancer patients--a meta-analysis. *Asian Pac J Cancer Prev* 2011; **12**: 2629-2635 [PMID: 22320965]
- Barriere G, Riouallon A, Renaudie J, Tartary M, Rigaud M. Mesenchymal characterization: alternative to simple CTC detection in two clinical trials. *Anticancer Res* 2012; **32**: 3363-3369 [PMID: 22843916]
- Karl A, Tritschler S, Hofmann S, Stief CG, Schindlbeck C. Perioperative search for circulating tumor cells in patients undergoing radical cystectomy for bladder cancer. *Eur J Med Res* 2009; **14**: 487-490 [PMID: 19948444]
- Coumans F, Terstappen L. Detection and Characterization of Circulating Tumor Cells by the CellSearch Approach. *Methods Mol Biol* 2015; **1347**: 263-278 [PMID: 26374323 DOI: 10.1007/978-1-4939-2990-0_18]
- Huang X, Gao P, Song Y, Sun J, Chen X, Zhao J, Xu H, Wang Z. Meta-analysis of the prognostic value of circulating tumor cells detected with the CellSearch System in colorectal cancer. *BMC Cancer* 2015; **15**: 202 [PMID: 25880692 DOI: 10.1186/s12885-015-1218-9]
- Steinarsdóttir M, Jónasson JG, Vidarsson H, Júlíusdóttir H, Hauksdóttir H, Ögmundsdóttir HM. Cytogenetic changes in nonmalignant breast tissue. *Genes Chromosomes Cancer* 2004; **41**: 47-55 [PMID: 15236316 DOI: 10.1002/gcc.20055]
- Gorges TM, Tinhofer I, Drosch M, Röse L, Zollner TM, Krahn T, von Ahsen O. Circulating tumour cells escape from EpCAM-based detection due to epithelial-to-mesenchymal transition. *BMC Cancer* 2012; **12**: 178 [PMID: 22591372 DOI: 10.1186/1471-2407-12-178]
- Grover PK, Cummins AG, Price TJ, Roberts-Thomson IC, Hardingham JE. Circulating tumour cells: the evolving concept and the inadequacy of their enrichment by EpCAM-based methodology for basic and clinical cancer research. *Ann Oncol* 2014; **25**: 1506-1516 [PMID: 24651410 DOI: 10.1093/annonc/mdl018]
- Gires O, Stoecklein NH. Dynamic EpCAM expression on circulating and disseminating tumor cells: causes and consequences. *Cell Mol Life Sci* 2014; **71**: 4393-4402 [PMID: 25103341 DOI: 10.1007/s00018-014-1693-1]
- Sieuwerds AM, Kraan J, Bolt J, van der Spoel P, Elstrodt F, Schutte M, Martens JW, Gratama JW, Sleijfer S, Foekens JA. Anti-epithelial cell adhesion molecule antibodies and the detection of circulating normal-like breast tumor cells. *J Natl Cancer Inst* 2009; **101**: 61-66 [PMID: 19116383 DOI: 10.1093/jnci/djn419]
- Diepenbruck M, Christofori G. Epithelial-mesenchymal transition (EMT) and metastasis: yes, no, maybe? *Curr Opin Cell Biol* 2016; **43**: 7-13 [PMID: 27371787 DOI: 10.1016/j.ceb.2016.06.002]
- Limasale YD, Tezcaner A, Özen C, Keskin D, Banerjee S. Epidermal growth factor receptor-targeted immunoliposomes for delivery of celecoxib to cancer cells. *Int J Pharm* 2015; **479**: 364-373 [PMID: 25595386 DOI: 10.1016/j.ijpharm.2015.01.016]
- Baas JM, Krens LL, Guchelaar HJ, Morreau H, Gelderblom H. Concordance of predictive markers for EGFR inhibitors in primary tumors and metastases in colorectal cancer: a review. *Oncologist* 2011; **16**: 1239-1249 [PMID: 21742964 DOI: 10.1634/

- theoncologist.2011-0024]
- 29 **Zhai J**, Scoble JA, Li N, Lovrecz G, Waddington LJ, Tran N, Muir BW, Coia G, Kirby N, Drummond CJ, Mulet X. Epidermal growth factor receptor-targeted lipid nanoparticles retain self-assembled nanostructures and provide high specificity. *Nanoscale* 2015; **7**: 2905-2913 [PMID: 25516406 DOI: 10.1039/c4nr05200e]
 - 30 **Nobuto H**, Sugita T, Kubo T, Shimose S, Yasunaga Y, Murakami T, Ochi M. Evaluation of systemic chemotherapy with magnetic liposomal doxorubicin and a dipole external electromagnet. *Int J Cancer* 2004; **109**: 627-635 [PMID: 14991586 DOI: 10.1002/ijc.20035]
 - 31 **Kullberg M**, Mann K, Owens JL. Improved drug delivery to cancer cells: a method using magnetoliposomes that target epidermal growth factor receptors. *Med Hypotheses* 2005; **64**: 468-470 [PMID: 15617850 DOI: 10.1016/j.mehy.2004.07.033]
 - 32 **Kulshrestha P**, Gogoi M, Bahadur D, Banerjee R. In vitro application of paclitaxel loaded magnetoliposomes for combined chemotherapy and hyperthermia. *Colloids Surf B Biointerfaces* 2012; **96**: 1-7 [PMID: 22521681 DOI: 10.1016/j.colsurfb.2012.02.029]
 - 33 **Onuki Y**, Obata Y, Kawano K, Sano H, Matsumoto R, Hayashi Y, Takayama K. Membrane Microdomain Structures of Liposomes and Their Contribution to the Cellular Uptake Efficiency into HeLa Cells. *Mol Pharm* 2016; **13**: 369-378 [PMID: 26709741 DOI: 10.1021/acs.molpharmaceut.5b00601]
 - 34 **Liang X**, Shi B, Wang K, Fan M, Jiao D, Ao J, Song N, Wang C, Gu J, Li Z. Development of self-assembling peptide nanovesicle with bilayers for enhanced EGFR-targeted drug and gene delivery. *Biomaterials* 2016; **82**: 194-207 [PMID: 26763734 DOI: 10.1016/j.biomaterials.2015.12.015]
 - 35 **Fleischer CC**, Payne CK. Nanoparticle-cell interactions: molecular structure of the protein corona and cellular outcomes. *Acc Chem Res* 2014; **47**: 2651-2659 [PMID: 25014679 DOI: 10.1021/ar500190q]
 - 36 **Moghimi SM**, Hunter AC, Murray JC. Long-circulating and target-specific nanoparticles: theory to practice. *Pharmacol Rev* 2001; **53**: 283-318 [PMID: 11356986]
 - 37 **Driemel C**, Kremling H, Schumacher S, Will D, Wolters J, Lindenlauf N, Mack B, Baldus SA, Hoya V, Pietsch JM, Panagiotidou P, Raba K, Vay C, Vallböhmer D, Harréus U, Knoefel WT, Stoecklein NH, Gires O. Context-dependent adaption of EpCAM expression in early systemic esophageal cancer. *Oncogene* 2014; **33**: 4904-4915 [PMID: 24141784 DOI: 10.1038/onc.2013.441]
 - 38 **Shigdar S**, Qian C, Lv L, Pu C, Li Y, Li L, Marappan M, Lin J, Wang L, Duan W. The use of sensitive chemical antibodies for diagnosis: detection of low levels of EpCAM in breast cancer. *PLoS One* 2013; **8**: e57613 [PMID: 23460885 DOI: 10.1371/journal.pone.0057613]
 - 39 **Yoshida GJ**, Saya H. EpCAM expression in the prostate cancer makes the difference in the response to growth factors. *Biochem Biophys Res Commun* 2014; **443**: 239-245 [PMID: 24309103 DOI: 10.1016/j.bbrc.2013.11.093]
 - 40 **Alves S**, Castro L, Fernandes MS, Francisco R, Castro P, Priault M, Chaves SR, Moyer MP, Oliveira C, Seruca R, Côrte-Real M, Sousa MJ, Preto A. Colorectal cancer-related mutant KRAS alleles function as positive regulators of autophagy. *Oncotarget* 2015; **6**: 30787-30802 [PMID: 26418750 DOI: 10.18632/oncotarget.5021]
 - 41 **Chang YY**, Lin JK, Lin TC, Chen WS, Jeng KJ, Yang SH, Wang HS, Lan YT, Lin CC, Liang WY, Chang SC. Impact of KRAS mutation on outcome of patients with metastatic colorectal cancer. *Hepatogastroenterology* 2014; **61**: 1946-1953 [PMID: 25713893]
 - 42 **Therkildsen C**, Bergmann TK, Henriksen-Schnack T, Ladelund S, Nilbert M. The predictive value of KRAS, NRAS, BRAF, PIK3CA and PTEN for anti-EGFR treatment in metastatic colorectal cancer: A systematic review and meta-analysis. *Acta Oncol* 2014; **53**: 852-864 [PMID: 24666267]
 - 43 **Wang S**, Hüttmann G, Scholzen T, Zhang Z, Vogel A, Hasan T, Rahmanzadeh R. A light-controlled switch after dual targeting of proliferating tumor cells via the membrane receptor EGFR and the nuclear protein Ki-67. *Sci Rep* 2016; **6**: 27032 [PMID: 27246531 DOI: 10.1038/srep27032]
 - 44 **Mourtzikou A**, Stamouli M, Kroupis C, Christodoulou S, Skondra M, Kastania A, Pectasides D, Athanasas G, Dimas C. Evaluation of carcinoembryonic antigen (CEA), epidermal growth factor receptor (EGFR), epithelial cell adhesion molecule EpCAM (GA733-2), and carbohydrate antigen 19-9 (CA 19-9) levels in colorectal cancer patients and correlation with clinicopathological characteristics. *Clin Lab* 2012; **58**: 441-448 [PMID: 22783573]
 - 45 **Liu J**, Zhou Q, Xu J, Wang J, Zhang Y. Detection of EGFR expression in patients with colorectal cancer and the therapeutic effect of cetuximab. *J BUON* 2016; **21**: 95-100 [PMID: 27061536]
 - 46 **Gorges TM**, Stein A, Quidde J, Hauch S, Röck K, Riethdorf S, Joosse SA, Pantel K. Improved Detection of Circulating Tumor Cells in Metastatic Colorectal Cancer by the Combination of the CellSearch® System and the AdnaTest®. *PLoS One* 2016; **11**: e0155126 [PMID: 27182774 DOI: 10.1371/journal.pone.0155126]
 - 47 **Myung JH**, Launier CA, Eddington DT, Hong S. Enhanced tumor cell isolation by a biomimetic combination of E-selectin and anti-EpCAM: implications for the effective separation of circulating tumor cells (CTCs). *Langmuir* 2010; **26**: 8589-8596 [PMID: 20155985 DOI: 10.1021/la904678p]
 - 48 **Meunier A**, Hernández-Castro JA, Turner K, Li K, Veres T, Juncker D. Combination of Mechanical and Molecular Filtration for Enhanced Enrichment of Circulating Tumor Cells. *Anal Chem* 2016; **88**: 8510-8517 [PMID: 27442305 DOI: 10.1021/acs.analchem.6b01324]
 - 49 **Bhana S**, Wang Y, Huang X. Nanotechnology for enrichment and detection of circulating tumor cells. *Nanomedicine (Lond)* 2015; **10**: 1973-1990 [PMID: 26139129 DOI: 10.2217/nnm.15.32]
 - 50 **Hanssen A**, Wagner J, Gorges TM, Taenzler A, Uzunoglu FG, Driemel C, Stoecklein NH, Knoefel WT, Angenendt S, Hauch S, Atanackovic D, Loges S, Riethdorf S, Pantel K, Wikman H. Characterization of different CTC subpopulations in non-small cell lung cancer. *Sci Rep* 2016; **6**: 28010 [PMID: 27302574 DOI: 10.1038/srep28010]
 - 51 **Tulley S**, Zhao Q, Dong H, Pearl ML, Chen WT. Vita-Assay™ Method of Enrichment and Identification of Circulating Cancer Cells/ Circulating Tumor Cells (CTCs). *Methods Mol Biol* 2016; **1406**: 107-119 [PMID: 26820949 DOI: 10.1007/978-1-4939-3444-7_9]

P- Reviewer: Kane S, McCarthy M, Provenzale D **S- Editor:** Ma YJ
L- Editor: Wang TQ **E- Editor:** Huang Y





Published by **Baishideng Publishing Group Inc**
7901 Stoneridge Drive, Suite 501, Pleasanton, CA 94588, USA
Telephone: +1-925-223-8242
Fax: +1-925-223-8243
E-mail: bpgoffice@wjgnet.com
Help Desk: <http://www.f6publishing.com/helpdesk>
<http://www.wjgnet.com>



ISSN 1007-9327

