

# World Journal of *Gastroenterology*

*World J Gastroenterol* 2018 September 14; 24(34): 3813-3964



**EDITORIAL**

- 3813** Clinical impact of microbiome in patients with decompensated cirrhosis  
*Oikonomou T, Papatheodoridis GV, Samarkos M, Goulis I, Cholongitas E*

**REVIEW**

- 3821** Implication of neurohormonal-coupled mechanisms of gastric emptying and pancreatic secretory function in diabetic gastroparesis  
*Mussa BM, Sood S, Verberne AJ*
- 3834** Drug resistance and new therapies in colorectal cancer  
*Van der Jeught K, Xu HC, Li YJ, Lu XB, Ji G*

**MINIREVIEWS**

- 3849** Role of two-dimensional shear wave elastography in chronic liver diseases: A narrative review  
*Jeong JY, Cho YS, Sohn JH*

**ORIGINAL ARTICLE****Basic Study**

- 3861** Delta-like ligand 4 in hepatocellular carcinoma intrinsically promotes tumour growth and suppresses hepatitis B virus replication  
*Kunanopparat A, Issara-Amphorn J, Leelahavanichkul A, Sanpavat A, Patumraj S, Tangkijvanich P, Palaga T, Hirankarn N*
- 3871** Optimal immunosuppressor induces stable gut microbiota after liver transplantation  
*Jiang JW, Ren ZG, Lu HF, Zhang H, Li A, Cui GY, Jia JJ, Xie HY, Chen XH, He Y, Jiang L, Li LJ*
- 3884** Formin-like 3 regulates RhoC/FAK pathway and actin assembly to promote cell invasion in colorectal carcinoma  
*Zeng YF, Xiao YS, Liu Y, Luo XJ, Wen LD, Liu Q, Chen M*
- 3898** Low expression of CDK5RAP3 and DDRGK1 indicates a poor prognosis in patients with gastric cancer  
*Lin JX, Xie XS, Weng XF, Zheng CH, Xie JW, Wang JB, Lu J, Chen QY, Cao LL, Lin M, Tu RH, Li P, Huang CM*

**Retrospective Cohort Study**

- 3908** Gastroduodenal ulcer bleeding in elderly patients on low dose aspirin therapy  
*Fukushi K, Tominaga K, Nagashima K, Kanamori A, Izawa N, Kanazawa M, Sasai T, Hiraishi H*

**Retrospective Study**

- 3919** Predicting the presence of adenomatous polyps during colonoscopy with National Cancer Institute Colorectal Cancer Risk-Assessment Tool  
*Tariq H, Kamal MU, Patel H, Patel R, Ameen M, Shehi E, Khalifa M, Azam S, Zhang A, Kumar K, Baiomi B, Shaikh D, Makker J*

**META-ANALYSIS**

- 3927** Epidemiology of viral hepatitis in Somalia: Systematic review and meta-analysis study

*Hassan-Kadle MA, Mugtaba SO, Ogurtsov PP*

**CASE REPORT**

- 3958** Unicentric Castleman disease presenting as a retroperitoneal peripancreatic mass: A report of two cases and review of literature

*Cheng JL, Cui J, Wang Y, Xu ZZ, Liu F, Liang SB, Tian H*

## Contents

*World Journal of Gastroenterology*  
Volume 24 Number 34 September 14, 2018

### ABOUT COVER

Editorial board member of *World Journal of Gastroenterology*, Mitsushige Sugimoto, MD, PhD, Associate Professor, Division of Digestive Endoscopy, Shiga University of Medical Science Hospital, Otsu 520-2192, Japan

### AIMS AND SCOPE

*World Journal of Gastroenterology* (*World J Gastroenterol*, *WJG*, print ISSN 1007-9327, online ISSN 2219-2840, DOI: 10.3748) is a peer-reviewed open access journal. *WJG* was established on October 1, 1995. It is published weekly on the 7<sup>th</sup>, 14<sup>th</sup>, 21<sup>st</sup>, and 28<sup>th</sup> each month. The *WJG* Editorial Board consists of 642 experts in gastroenterology and hepatology from 59 countries.

The primary task of *WJG* is to rapidly publish high-quality original articles, reviews, and commentaries in the fields of gastroenterology, hepatology, gastrointestinal endoscopy, gastrointestinal surgery, hepatobiliary surgery, gastrointestinal oncology, gastrointestinal radiation oncology, gastrointestinal imaging, gastrointestinal interventional therapy, gastrointestinal infectious diseases, gastrointestinal pharmacology, gastrointestinal pathophysiology, gastrointestinal pathology, evidence-based medicine in gastroenterology, pancreatology, gastrointestinal laboratory medicine, gastrointestinal molecular biology, gastrointestinal immunology, gastrointestinal microbiology, gastrointestinal genetics, gastrointestinal translational medicine, gastrointestinal diagnostics, and gastrointestinal therapeutics. *WJG* is dedicated to become an influential and prestigious journal in gastroenterology and hepatology, to promote the development of above disciplines, and to improve the diagnostic and therapeutic skill and expertise of clinicians.

### INDEXING/ABSTRACTING

*World Journal of Gastroenterology* (*WJG*) is now indexed in Current Contents<sup>®</sup>/Clinical Medicine, Science Citation Index Expanded (also known as SciSearch<sup>®</sup>), Journal Citation Reports<sup>®</sup>, Index Medicus, MEDLINE, PubMed, PubMed Central and Directory of Open Access Journals. The 2018 edition of Journal Citation Reports<sup>®</sup> cites the 2017 impact factor for *WJG* as 3.300 (5-year impact factor: 3.387), ranking *WJG* as 35<sup>th</sup> among 80 journals in gastroenterology and hepatology (quartile in category Q2).

### EDITORS FOR THIS ISSUE

Responsible Assistant Editor: *Xiang Li*  
Responsible Electronic Editor: *Ying-Na Bian*  
Proofing Editor-in-Chief: *Lian-Sheng Ma*

Responsible Science Editor: *Rao-Yu Ma*  
Proofing Editorial Office Director: *Ze-Mao Gong*

#### NAME OF JOURNAL

*World Journal of Gastroenterology*

#### ISSN

ISSN 1007-9327 (print)  
ISSN 2219-2840 (online)

#### LAUNCH DATE

October 1, 1995

#### FREQUENCY

Weekly

#### EDITORS-IN-CHIEF

**Andrzej S Tarnawski, MD, PhD, DSc (Med),  
Professor of Medicine, Chief Gastroenterology, VA  
Long Beach Health Care System, University of California,  
Irvine, CA, 5901 E. Seventh Str., Long Beach,  
CA 90822, United States**

#### EDITORIAL BOARD MEMBERS

All editorial board members resources online at <http://www.wjgnet.com/1007-9327/editorialboard.htm>

#### EDITORIAL OFFICE

Ze-Mao Gong, Director  
*World Journal of Gastroenterology*  
Baishideng Publishing Group Inc  
7901 Stoneridge Drive, Suite 501,  
Pleasanton, CA 94588, USA  
Telephone: +1-925-2238242  
Fax: +1-925-2238243  
E-mail: [editorialoffice@wjgnet.com](mailto:editorialoffice@wjgnet.com)  
Help Desk: <http://www.f6publishing.com/helpdesk>  
<http://www.wjgnet.com>

#### PUBLISHER

Baishideng Publishing Group Inc  
7901 Stoneridge Drive, Suite 501,  
Pleasanton, CA 94588, USA  
Telephone: +1-925-2238242  
Fax: +1-925-2238243  
E-mail: [bpgoffice@wjgnet.com](mailto:bpgoffice@wjgnet.com)  
Help Desk: <http://www.f6publishing.com/helpdesk>  
<http://www.wjgnet.com>

#### PUBLICATION DATE

September 14, 2018

#### COPYRIGHT

© 2018 Baishideng Publishing Group Inc. Articles published by this Open-Access journal are distributed under the terms of the Creative Commons Attribution Non-commercial License, which permits use, distribution, and reproduction in any medium, provided the original work is properly cited, the use is non commercial and is otherwise in compliance with the license.

#### SPECIAL STATEMENT

All articles published in journals owned by the Baishideng Publishing Group (BPG) represent the views and opinions of their authors, and not the views, opinions or policies of the BPG, except where otherwise explicitly indicated.

#### INSTRUCTIONS TO AUTHORS

Full instructions are available online at <http://www.wjgnet.com/bpg/gerinfo/204>

#### ONLINE SUBMISSION

<http://www.f6publishing.com>

## Unicentric Castleman disease presenting as a retroperitoneal peripancreatic mass: A report of two cases and review of literature

Jia-Lin Cheng, Jing Cui, Yi Wang, Zong-Zhen Xu, Feng Liu, Shu-Bin Liang, Hu Tian

Jia-Lin Cheng, Shu-Bin Liang, Taishan Medical University, Tai'an 271016, Shandong Province, China

Jia-Lin Cheng, Zong-Zhen Xu, Feng Liu, Shu-Bin Liang, Hu Tian, Department of General Surgery, Shandong Provincial Qianfoshan Hospital, Shandong University, Jinan 250014, Shandong Province, China

Jing Cui, Department of Pathology, Shandong Provincial Qianfoshan Hospital, Shandong University, Jinan 250014, Shandong Province, China

Yi Wang, Department of Medical Imaging, Shandong Provincial Qianfoshan Hospital, Shandong University, Jinan 250014, Shandong Province, China

ORCID number: Jia-Lin Cheng (0000-0002-4306-4894); Jing Cui (0000-0002-8266-9984); Yi Wang (0000-0002-1832-0876); Zong-Zhen Xu (0000-0003-2693-8884); Feng Liu (0000-0002-7271-8658); Shu-Bin Liang (0000-0001-8839-8049); Hu Tian (0000-0002-8015-9083).

**Author contributions:** Cheng JL designed the report and wrote the paper; Cheng JL, Xu ZZ, Liu F and Tian H performed the surgery; Cheng JL, Cui J, Wang Y and Liang SB collected the patient's clinical data; Cheng JL and Tian H analyzed the data and revised the paper; all authors have read and approved the final version of this manuscript.

**Supported by the Key Research and Development Plan of Shandong Province, No. 2016GSF201108.**

**Informed consent statement:** The patients included in this study gave written informed consent for the use and disclosure of their protected health information.

**Conflict-of-interest statement:** The authors of this manuscript have no conflicts of interest to disclose.

**CARE Checklist (2013) statement:** The authors have read the CARE Checklist (2013), and the manuscript was prepared and revised according to the CARE Checklist (2013).

**Open-Access:** This article is an open-access article which was

selected by an in-house editor and fully peer-reviewed by external reviewers. It is distributed in accordance with the Creative Commons Attribution Non Commercial (CC BY-NC 4.0) license, which permits others to distribute, remix, adapt, build upon this work non-commercially, and license their derivative works on different terms, provided the original work is properly cited and the use is non-commercial. See: <http://creativecommons.org/licenses/by-nc/4.0/>

**Manuscript source:** Unsolicited manuscript

**Correspondence to:** Hu Tian, MD, PhD, Chief Doctor, Professor, Surgeon, Department of General Surgery, Shandong Provincial Qianfoshan Hospital, Shandong University, No. 16766, Jingshi Road, Jinan 250014, Shandong Province, China. [tianhu6585@163.com](mailto:tianhu6585@163.com)  
**Telephone:** +86-531-89269817  
**Fax:** +86-531-82963647

**Received:** April 23, 2018  
**Peer-review started:** April 27, 2018  
**First decision:** July 4, 2018  
**Revised:** July 10, 2018  
**Accepted:** July 22, 2018  
**Article in press:** July 22, 2018  
**Published online:** September 14, 2018

### Abstract

Castleman disease (CD) is a rare disorder of lymph nodes and related tissues. CD generally occurs in the mediastinum, as well as in cervical, retroperitoneal and axillary regions. The disease is classified into two major types: unicentric CD (UCD) and multicentric CD. The occurrence of UCD in the retroperitoneal peripancreatic region is quite rare. We encountered two cases of retroperitoneal peripancreatic UCD in our hospital during the past three years. Following a series of medical examinations, including magnetic resonance imaging, computed tomography, ultrasonography and postoperative histopathological examination, these two



patients were diagnosed with UCD, which presented as a retroperitoneal peripancreatic mass. The mass in each patient was completely excised, and no postoperative radiochemotherapy was administered. Both patients recovered well without recurrence during a follow-up period of 30 mo and 8 mo.

**Key words:** Unicentric Castleman disease; Peripancreatic; Retroperitoneal; Tumor

© **The Author(s) 2018.** Published by Baishideng Publishing Group Inc. All rights reserved.

**Core tip:** We report two typical cases of unicentric Castleman disease (UCD) presenting as a retroperitoneal peripancreatic mass. The clinical manifestations and imaging findings of these masses were nonspecific. UCD is difficult to diagnose prior to surgery, and the diagnosis is mainly by postoperative pathological examination. The occurrence of UCD in the abdominal cavity is very rare, especially in the retroperitoneal peripancreatic region. Importantly, both patients recovered well without postoperative radiochemotherapy. These case reports provide a valuable reference for the diagnosis and treatment of this disease.

Cheng JL, Cui J, Wang Y, Xu ZZ, Liu F, Liang SB, Tian H. Unicentric Castleman disease presenting as a retroperitoneal peripancreatic mass: A report of two cases and review of literature. *World J Gastroenterol* 2018; 24(34): 3958-3964 Available from: URL: <http://www.wjgnet.com/1007-9327/full/v24/i34/3958.htm> DOI: <http://dx.doi.org/10.3748/wjg.v24.i34.3958>

## INTRODUCTION

Castleman disease (CD) is generally identified as a polyclonal lymphoid proliferation of unknown etiology, and is also known as angiofollicular lymph node hyperplasia. It was first described by Benjamin Castleman in 1954 as "localized mediastinal lymph node hyperplasia resembling thymoma", and was named after him<sup>[1]</sup>. This disease can occur in any age group, but is mostly seen in patients aged 30-50 years, with no significant gender differences<sup>[2]</sup>. Clinically, the disease is divided into two major types: unicentric CD (UCD) and multicentric CD, based on its locations at a single lymph node and a series of lymph nodes, respectively<sup>[3]</sup>. CD, which develops in all lymph nodes, especially in the mediastinum, can also occur in the cervical, retroperitoneal, and axillary regions. However, invasion into the retroperitoneal peripancreatic region is quite rare<sup>[4]</sup>. We herein report two rare cases of retroperitoneal peripancreatic UCD over a three-year period from 2014 to 2017.

## CASE REPORT

### Case 1

A 48 year old woman was referred to our department on

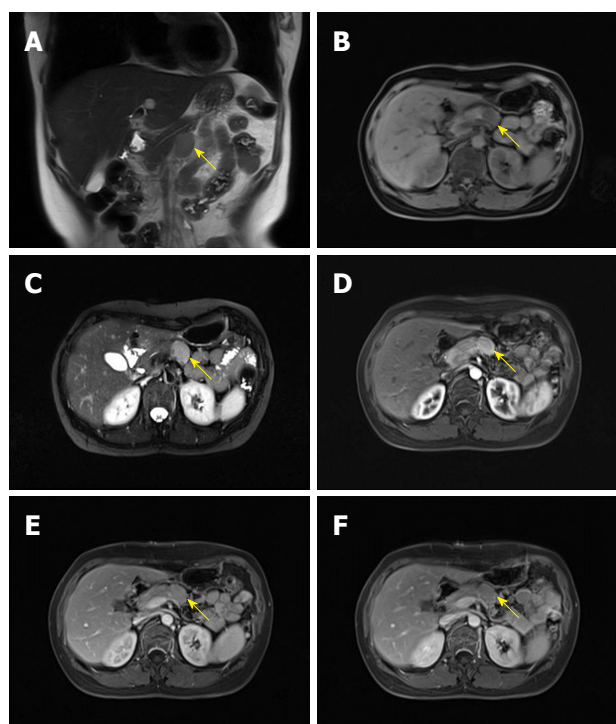
April 28, 2014 for a detailed physical examination due to retroperitoneal peripancreatic lymph node enlargement over seven days. The patient initially had no apparent discomfort or noteworthy positive signs. Magnetic resonance imaging (MRI) of the epigastrium showed an elliptical hyperintense signal below the pancreas on the T1 weighted image (T1WI) (Figure 1B). The size of the lesion was 3.0 cm × 1.9 cm with a clear boundary, with slight hyperintensity on the fat-suppression T2 weighted image (T2WI) (Figure 1C). In addition, marked enhancement on the arterial phase (Figure 1D and E) and reduced enhancement on the delayed phase (Figure 1F) were observed, which were probably due to lymph node enlargement. Laboratory examinations revealed that the patient was negative for the human immunodeficiency virus (HIV) antibody. Tumor markers and other laboratory test results were also within the normal range.

Based on the above results, a retroperitoneal peripancreatic mass was diagnosed preoperatively. Laparotomy was performed through an oblique incision along the left lower rib, and no ascites were found. When the gastrocolic ligament was incised, a tumor was discovered closely adhered to the lower edge of the pancreas (Figure 2A). The tumor volume was 3.0 cm × 2.0 cm × 2.0 cm, had a soft flexible texture and a clear boundary (Figure 2B). The tumor was completely removed with blunt and sharp separation for further testing (Figure 2C). Lymphoid tissue hyperplasia was identified in a frozen biopsy. Postoperative pathology indicated that the retroperitoneal peripancreatic single lymph node was compatible with CD (Figure 3B-D). Immunohistochemical staining revealed that cells were slightly positive for CD20, CD3, CD21, bcl-6, and bcl-2, a small number of cells were positive for CD138, and 20% of cells were positive for Ki-67. During the follow-up at 30 mo after surgery, the patient was recovering well with no signs of recurrence.

### Case 2

A 57 year old woman was admitted to our hospital on July 18, 2017 because of tiredness and fever. The patient had a body temperature of 39 degrees without other discomfort. Physical examination indicated no positive symptoms. MRI of the epigastrium showed that there was an elliptical hyperintense signal below the pancreas on the T1WI (Figure 4A) and slight hyperintensity on the fat-suppression T2WI (Figure 4B). The internal signal was heterogeneous and a clearly bounded tumor 3.4 cm × 2.8 cm in size was observed. Marked enhancement on the arterial phase was inhomogeneous (Figure 4C). In addition, the venous phase and delayed phase continued to intensify (Figure 4D-F). On account of the hypervascular mass located under the pancreas, it was highly possible that the mass was a nerve incretory tumor.

Laboratory examinations showed that the HIV antibody was negative and the white blood cell count was  $14.6 \times 10^9/L$ . Tumor markers and other laboratory test results were within the normal range. The preoperative



**Figure 1** Magnetic resonance imaging of the lesion (yellow arrow) in Case 1. A: Coronal T2-weighted image sequence; B: Transverse T1-weighted fat-suppression sequence; C: Transverse T2-weighted fat-suppression sequence; D: Transverse T1-weighted fat-suppression sequence (early arterial phase); E: Transverse T1-weighted fat-suppression sequence (late arterial phase); F: Transverse T1-weighted fat-suppression sequence (delayed phase).

diagnosis was an retroperitoneal neuroendocrine tumor. Laparoscopic surgery was performed to remove the retroperitoneal tumor. No ascitic fluid or obvious conglutination were found. When the gastrocolic ligament was incised, the lesion was located behind and below the transverse mesocolon. Intraoperative ultrasonography indicated that the tumor had an abundant blood supply, and its right side was close to the inferior mesenteric artery and vein (Figure 5A). The flexible tumor was 3.0 cm × 3.0 cm in size with a clear border (Figure 5B). The tumor was completely removed by blunt and sharp separation for further analysis (Figure 5C). Rapid histopathological examination revealed that the mass was possibly retroperitoneal CD together with a follicular dendritic cell tumor, which was confirmed by subsequent postoperative pathology (Figure 6B-F). Immunohistochemical staining showed that a portion of cells were positive for CD21 and negative for CK, a small number of cells were positive for S-100 and slightly positive for CD1a and CD23, and about five percent of cells were positive for Ki67. The patient recovered well after surgery without chemotherapy, and no relapse was found during the follow-up period.

## DISCUSSION

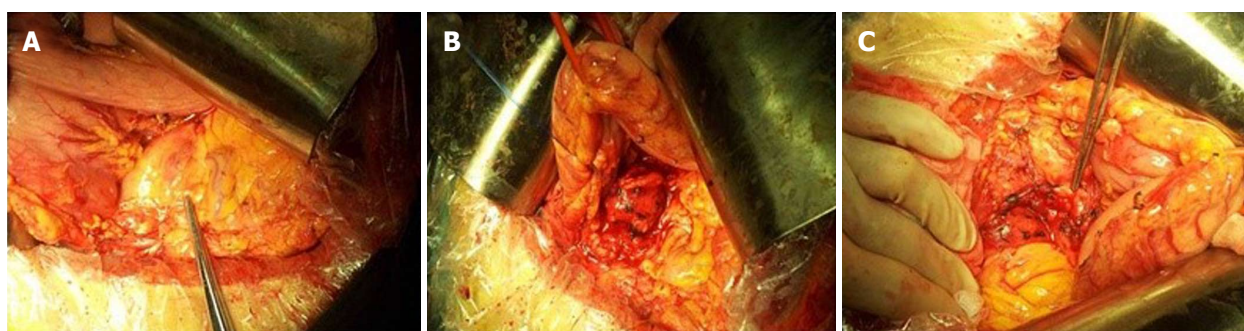
CD is a rare lymphoproliferative disease with a favorable prognosis; however, the pathogenesis of this disease is

unclear. Munshi *et al*<sup>[5]</sup> showed that the incidence of CD is approximately 21/million. This disease can occur in all lymph nodes, especially in the mediastinum, neck, retroperitoneum and axillary regions; however, its occurrence in the retroperitoneal peripancreatic region is more rare<sup>[4]</sup>. The etiology of CD is thought to be related to herpes simplex virus 8 and HIV<sup>[6-7]</sup>. Another report confirmed that the pathogenesis of CD was closely related to the proliferation of T cells and B cells stimulated by interleukin 6<sup>[8]</sup>. CD mainly manifests as a painless enlargement of deep or superficial lymph nodes, and may be accompanied by fever, fatigue, anemia, night sweats, and an accelerated erythrocyte sedimentation rate<sup>[9]</sup>. The two cases in this report showed some differences in clinical manifestation. The tumor in Case 1 was found by physical examination without apparent patient discomfort, and the other was diagnosed by the symptoms of fever and fatigue. In addition, there was no obvious abdominal discomfort in either patient.

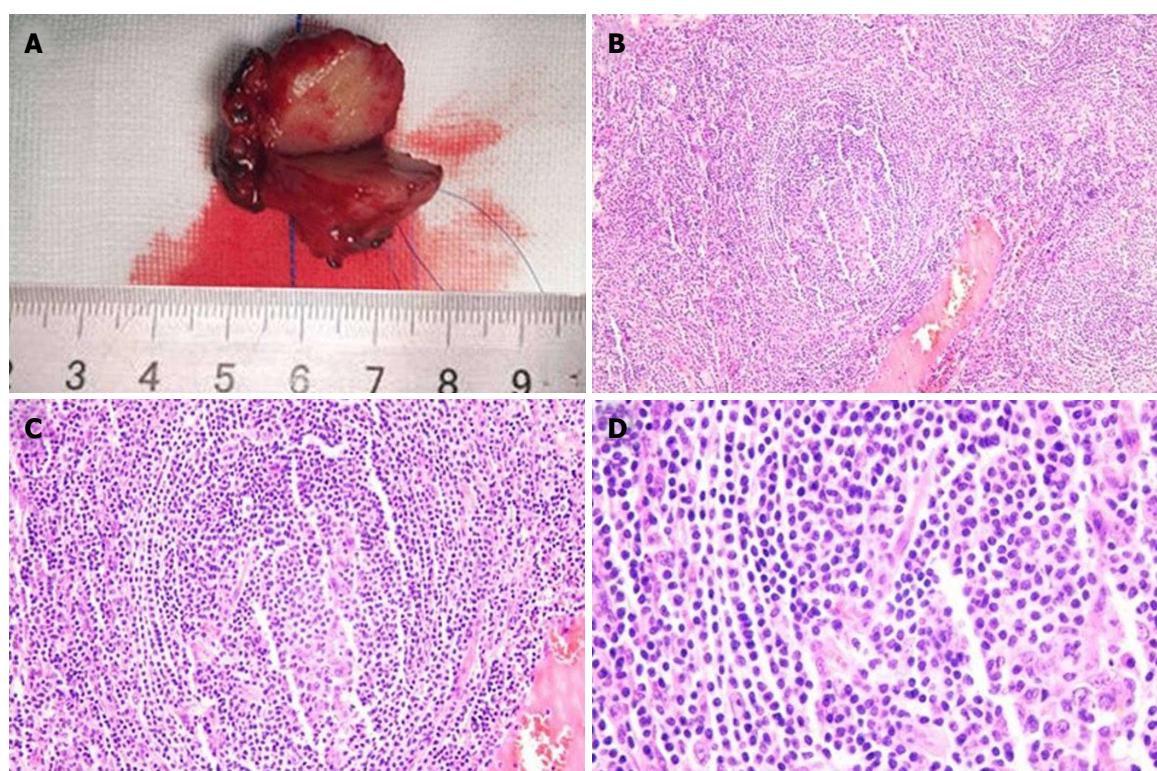
Retroperitoneal peripancreatic UCD is usually concealed and difficult to diagnose. In addition, there is no specific manifestation to distinguish it from a neuroendocrine tumor, paraganglioma, or lymphoma<sup>[10]</sup>. Imaging manifestations of the disease are very difficult to distinguish from other diseases, and the preoperative imaging diagnosis does not usually agree with the postoperative histopathological diagnosis. These difficulties can lead to misdiagnosis. Computed tomography (CT), MRI, and ultrasound can provide reference values for the diagnosis of retroperitoneal UCD. On CT imaging, retroperitoneal UCD is generally a well-defined mass with different morphologies, such as elliptical, kidney-shaped, and dumbbell-shaped, which can easily be distinguished from a spherical paraganglioma. In these two cases, both masses were oval in shape. The plain CT scan images of this disease show low or equal density lesions. The majority of lesions exhibit inhomogeneous enhancement on enhanced CT images. In addition, some tumors have a rich vascular supply, accompanied by microcalcifications<sup>[11]</sup>. On the MRI, most retroperitoneal UCD lesions show an iso-intense or hypo-intense signal on T1WI, and a slight hyperintense or hyperintense signal on T2WI. Although the enhanced scan characteristics are similar in both CT and MRI, MRI is superior to CT in terms of identifying the relationship between the mass and neighboring vessels or tissues<sup>[12]</sup>. In addition, ultrasound also has some advantages in estimating the location of the mass and its adjacent feeding vessels. In Case 2 in our report, we quickly clarified the location of the mass and its relationship with surrounding blood vessels (such as the inferior mesenteric artery and vein) using intraoperative ultrasonography, effectively reducing the risk of bleeding during resection of the mass and significantly improving the safety of surgery.

Due to the unclear specificity in clinical manifestations and imaging findings, the diagnosis of retroperitoneal peripancreatic UCD is still dependent on histopathology.





**Figure 2** Surgery of the retroperitoneal peripancreatic unicentric Castleman disease in Case 1. A: The tumor was close to the lower side of the pancreas with a clear margin and a volume of 3 cm × 2 cm × 2 cm; B: Image of the free tumor; C: The tumor was completely excised.



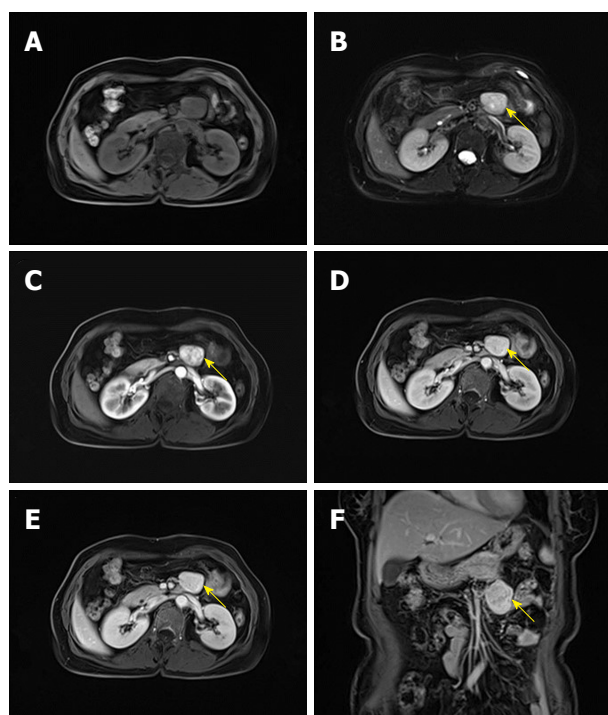
**Figure 3** Pathological examinations of the tumor in Case 1. A: The tumor was 3 cm × 2 cm × 2 cm in size. It had a smooth surface, complete envelope, and was white to tan in appearance; B: Pathological section analysis of UCD (HE, × 100); C: Pathological section analysis of UCD (HE, × 200); D: Pathological section analysis of UCD (HE, × 400). HE: Hematoxylin and eosin; UCD: Unicentric Castleman disease.

In addition, different pathological types also have a direct impact on the treatment and prognosis of the disease. In general, CD can be classified into three types based on pathological characteristics: hyaline vascular type (HV), plasma cell type (PC) and mixed type. The percentage of HV type and PC type is approximately 90% and 10%, respectively. Mixed type cases are rarely reported. Most HV type cases manifest as UCD, while PC type cases usually occur in the form of multicentric CD<sup>[13]</sup>. In microscopic images of HV type, the centers of the huge folliculus lymphaticus are atrophied, blood vessels degenerate with hyaline vascular changes during this period, and a portion have an onion-like skin appearance<sup>[2,14-15]</sup>. In microscopic images of PC type CD, the plasma cells are mainly spread throughout the

interfollicular areas<sup>[16]</sup>. Pathologically, the two cases in this report were HV type UCD. In Case 1, mantle cell hyperplasia appeared as an onion-like skin surrounding a neurodegenerative vascularized germinal center. In Case 2, the single penetrated vessel appeared as a lollipop shape with hyaline degeneration.

At present, complete resection of the tumor is still the most effective treatment for retroperitoneal UCD with low recurrence and high cure rates<sup>[17]</sup>. However, recurrence has been reported in some cases, and both radiotherapy and chemotherapy were unsatisfactory for recurrent UCD<sup>[18]</sup>. Fortunately, no recurrence of retroperitoneal UCD was found in either of our two cases after surgery. During the resection of retroperitoneal UCD, special attention should be paid to





**Figure 4** Magnetic resonance imaging of the lesion (yellow arrow) in Case 2. A: Transverse T1-weighted fat-suppression sequence; B: Transverse T2-weighted fat-suppression sequence; C: Transverse T1-weighted fat-suppression sequence (arterial phase); D: Transverse T1-weighted fat-suppression sequence (venous phase); E: Transverse T1-weighted fat-suppression sequence (delayed phase); F: Coronal T1-weighted fat-suppression sequence (delayed phase).

the affected area between the tumor and surrounding vessels, tissues and organs, which is conducive to the complete resection of tumor and reducing blood loss during surgery. In Case 2, we performed laparoscopic resection of the tumor, which has the advantages of reduced surgical trauma, clear intraoperative vision, reduced intraoperative bleeding, high safety, and faster postoperative recovery. In Case 2, we found UCD together with follicular dendritic cell tumor (FDCT), which is a rare low-grade malignant tumor and may arise from CD<sup>[19]</sup>. However, it was difficult to determine whether the FDCT in Case 2 was secondary to CD. Surgical resection is the first choice in the treatment of FDCT, and recurrence has been observed after surgery. Adjuvant radiotherapy and chemotherapy can be followed after surgery, especially in patients with unresectable FDCT<sup>[20]</sup>. Case 2 did not undergo radiochemotherapy after surgery. We believe that the treatment of this patient was reasonable. In this report, we described two rare cases of retroperitoneal peripancreatic UCD, which will contribute to an improvement in the understanding of UCD and provide a significant reference for future cases.

## ARTICLE HIGHLIGHTS

### Case characteristics

Case 1 is a 48 year old female patient who presented with lymph node

enlargement; and Case 2 is a 57 year old female patient who presented with tiredness and fever.

### Clinical diagnosis

In Case 1, the patient initially had no apparent discomfort or noteworthy positive physical signs. In Case 2, the patient felt tired and had a fever with no other discomfort.

### Differential diagnosis

Neuroendocrine tumor, paraganglioma and lymphoma.

### Laboratory diagnosis

In Case 1, laboratory examinations revealed that the HIV antibody was negative. Carbohydrate antigen 19-9, carcinoembryonic antigen and other laboratory test results were also within the normal range. In Case 2, laboratory examinations showed that the HIV antibody was negative and the white blood cell count was  $14.6 \times 10^9/L$ . Carbohydrate antigen 19-9, carcinoembryonic antigen and other laboratory test results were also within the normal range.

### Imaging diagnosis

In Case 1, MRI of the epigastrium showed that there was an elliptical hyperintense signal below the pancreas on the T1WI, and slight hyperintensity on the T2WI. In addition, marked enhancement on the arterial phase and reduced enhancement on the delayed phase were observed. In Case 2, MRI of the epigastrium showed that there was an elliptical hyperintense signal below the pancreas on the T1WI and slight hyperintensity on the T2WI. Marked enhancement on the arterial phase was inhomogeneous. In addition, the venous phase and delayed phase continued to intensify.

### Pathological diagnosis

In Case 1, the retroperitoneal single lymph node was compatible with Castleman disease. In addition, immunohistochemical staining revealed that cells were slightly positive for CD20, CD3, CD21, bcl-6, and bcl-2, a small number of cells were positive for CD138, and 20% of cells were positive for Ki-67. In Case 2, the diagnosis was retroperitoneal Castleman disease together with a follicular dendritic cell tumor. Immunohistochemical staining showed that a portion of cells were positive for CD21 and cells were negative for CK, a small number of cells were positive for S-100 and slightly positive for CD 1a and CD23, and about five percent of cells were positive for Ki-67.

### Treatment

In Case 1, laparotomy was performed to remove the retroperitoneal peripancreatic tumor without subsequent radiochemotherapy. In Case 2, laparoscopic surgery was performed to remove the retroperitoneal peripancreatic tumor without subsequent radiochemotherapy.

### Related reports

Unicentric Castleman disease (UCD) is a rare disease of lymph nodes and related tissues, and occurrence in the retroperitoneal peripancreatic region is quite rare. Only a few cases of UCD together with follicular dendritic cell tumor have been identified. At present, complete resection of the tumor is still the most effective treatment for retroperitoneal peripancreatic UCD with low recurrence and high cure rates.

### Term explanation

Follicular dendritic cell tumor is an uncommon neoplasm that has features of follicular dendritic cell differentiation, and typically presents as a slow-growing, painless mass without systemic symptoms. The tumor can occur on various parts of the body such as lymph nodes, tonsils, armpits and mediastinum, but is most common in the neck lymph nodes.

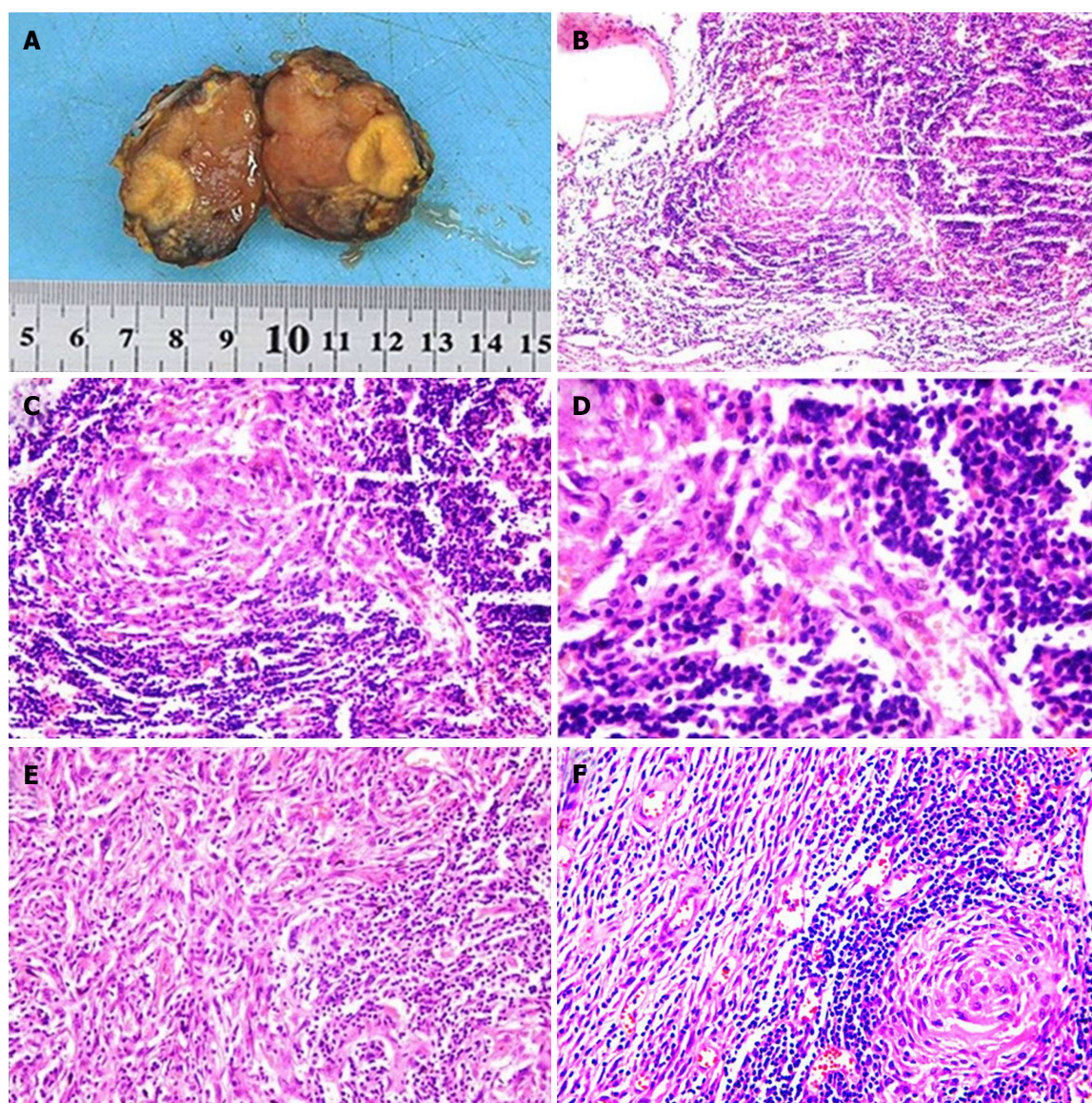
### Experiences and lessons

At present, complete resection of the tumor is still the most effective treatment for retroperitoneal peripancreatic UCD with low recurrence and high cure rates. The diagnosis of retroperitoneal peripancreatic UCD is still dependent on histopathology. The two rare cases of retroperitoneal peripancreatic UCD





**Figure 5** Surgery of the retroperitoneal peripancreatic unicentric Castleman disease in Case 2. A: The lesion was located below and behind the transverse mesocolon with a volume of 3.5 cm × 3 cm × 3 cm. Intraoperative ultrasonography indicated that the tumor had an abundant blood supply, and its right side was close to the inferior mesenteric artery and vein; B: Image of the free tumor; C: The tumor was completely excised.



**Figure 6** Pathological examinations of the tumor in Case 2. A: The tumor was 3.5 cm × 3 cm × 3 cm in size. It had a smooth surface, complete envelope, and was white to tan in appearance; B: Pathological section analysis of UCD (HE, × 100); C: Pathological section analysis of UCD (HE, × 200); D: Pathological section analysis of UCD (HE, × 400); E: Pathological section analysis of FDCT (HE, × 200); F: Pathological section analysis of UCD together with FDCT (HE, × 200). HE: Hematoxylin and eosin; UCD: Unicentric Castleman disease; FDCT: Follicular dendritic cell tumor.

included in this report will improve our understanding of this disease and provide a significant reference for future cases.

## REFERENCES

- 1 **Castleman B**, Iverson L, Menendez VP. Localized mediastinal lymphnode hyperplasia resembling thymoma. *Cancer* 1956; **9**: 822-830 [PMID: 13356266 DOI: 10.1002/1097-0142(195607/08)9:4<822::AID-CNCR2820090430>3.0.CO;2-4]
- 2 **Talat N**, Belgaumkar AP, Schulte KM. Surgery in Castleman's disease: a systematic review of 404 published cases. *Ann Surg* 2012; **255**: 677-684 [PMID: 22367441 DOI: 10.1097/SLA.0b013e318249dcdc]
- 3 **Chan KL**, Lade S, Prince HM, Harrison SJ. Update and new approaches in the treatment of Castleman disease. *J Blood Med* 2016; **7**: 145-158 [PMID: 27536166 DOI: 10.2147/JBM.S60514]
- 4 **Charalabopoulos A**, Misiakos EP, Foukas P, Tsapralis D, Charalampopoulos A, Liakakos T, Macheras A. Localized peripancreatic plasma cell Castleman disease. *Am J Surg* 2010; **199**: e51-e53 [PMID: 20079482 DOI: 10.1016/j.amjsurg.2009.05.020]
- 5 **Munshi N**, Mehra M, van de Velde H, Desai A, Potluri R, Vermeulen J. Use of a claims database to characterize and estimate the incidence rate for Castleman disease. *Leuk Lymphoma* 2015; **56**: 1252-1260 [PMID: 25120049 DOI: 10.3109/10428194.2014.953145]
- 6 **Pria AD**, Pinato D, Roe J, Nareish K, Nelson M, Bower M. Relapse of HHV8-positive multicentric Castleman disease following rituximab-based therapy in HIV-positive patients. *Blood* 2017; **129**: 2143-2147 [PMID: 28143881 DOI: 10.1182/blood-2016-10-747477]
- 7 **Siegel MO**, Ghafouri S, Ajmera R, Simon GL. Immune reconstitution inflammatory syndrome, human herpesvirus 8 viremia, and HIV-associated multicentric Castleman disease. *Int J Infect Dis* 2016; **48**: 49-51 [PMID: 27173076 DOI: 10.1016/j.ijid.2016.05.005]
- 8 **Musters A**, Assaf A, Gerlag DM, Tak PP, Tas SW. Discovery of Innovative Therapies for Rare Immune-Mediated Inflammatory Diseases via Off-Label Prescription of Biologics: The Case of IL-6 Receptor Blockade in Castleman's Disease. *Front Immunol* 2015; **6**: 625 [PMID: 26697019 DOI: 10.3389/fimmu.2015.00625]
- 9 **Talarico F**, Negri L, Iusco D, Corazza GG. Unicentric Castleman's disease in peripancreatic tissue: case report and review of the literature. *G Chir* 2008; **29**: 141-144 [PMID: 18419976]
- 10 **Stevens EA**, Strowd RE, Mott RT, Oaks TE, Wilson JA. Angiofollicular lymph node hyperplasia resembling a spinal nerve sheath tumor: a rare case of Castleman's disease. *Spine J* 2009; **9**: e18-e22 [PMID: 19482516 DOI: 10.1016/j.spinee.2009.04.011]
- 11 **Shah D**, Darji P, Lodha S, Bolla S. Unicentric Castleman's disease of abdomen. *J Radiol Case Rep* 2013; **7**: 26-33 [PMID: 23705043 DOI: 10.3941/jrcr.v7i3.1031]
- 12 **Dong A**, Dong H, Zuo C. Castleman disease of the porta hepatis mimicking exophytic hepatocellular carcinoma on CT, MRI, and FDG PET/CT. *Clin Nucl Med* 2014; **39**: e69-e72 [PMID: 23486333 DOI: 10.1097/RLU.0b013e31827a25fd]
- 13 **Ghosh A**, Pradhan SV, Talwar OP. Castleman's disease - hyaline vascular type - clinical, cytological and histological features with review of literature. *Indian J Pathol Microbiol* 2010; **53**: 244-247 [PMID: 20551525 DOI: 10.4103/0377-4929.64335]
- 14 **Hölzle F**, Landers A, Platz-Baudin C, Basrei D, Wolff KD. [Castleman's disease]. *Mund Kiefer Gesichtschir* 2005; **9**: 121-125 [PMID: 15647952 DOI: 10.1007/s10006-004-0592-2]
- 15 **Schaefer IM**, Günnel H, Schweyer S, Korenkov M. Unicentric castelman's disease located in the lower extremity: a case report. *BMC Cancer* 2011; **11**: 352 [PMID: 21838880 DOI: 10.1186/1471-2407-11-352]
- 16 **Wang HW**, Pittaluga S, Jaffe ES. Multicentric Castleman disease: Where are we now? *Semin Diagn Pathol* 2016; **33**: 294-306 [PMID: 27296355 DOI: 10.1053/j.semdp.2016.05.006]
- 17 **Xu J**, Zhou BO, Cao HL, Wang BO, Yan S, Zheng SS. Surgical management of isolated retroperitoneal Castleman's disease: A case report. *Oncol Lett* 2016; **11**: 2123-2126 [PMID: 26998133 DOI: 10.3892/ol.2016.4177]
- 18 **Baek HJ**, Kook H, Han DK, Shin MG, Kim HS, Hwang TJ. Unicentric Castleman disease relapsed after rituximab-CHOP chemotherapy or radiation therapy in an adolescent. *J Pediatr Hematol Oncol* 2012; **34**: e206-e208 [PMID: 22258344 DOI: 10.1097/MPH.0b013e3182352dc7]
- 19 **Jain P**, Prieto VG, Manning JT, Fowler N, Medeiros LJ, Kanagal-Shamanna R. Synchronous presentation of intra-nodal follicular dendritic cell sarcoma and Castleman disease. *Am J Hematol* 2017; **92**: 478-479 [PMID: 27862216 DOI: 10.1002/ajh.24603]
- 20 **Jain P**, Milgrom SA, Patel KP, Nastoupil L, Fayad L, Wang M, Pinnix CC, Dabaja BS, Smith GL, Yu J, Hu S, Bueso Ramos CE, Kanagal-Shamanna R, Medeiros LJ, Oki Y, Fowler N. Characteristics, management, and outcomes of patients with follicular dendritic cell sarcoma. *Br J Haematol* 2017; **178**: 403-412 [PMID: 28382648 DOI: 10.1111/bjh.14672]

**P- Reviewer:** Govindarajan GK, Lee WJ **S- Editor:** Wang XJ  
**L- Editor:** A **E- Editor:** Yin SY







Published by **Baishideng Publishing Group Inc**  
7901 Stoneridge Drive, Suite 501, Pleasanton, CA 94588, USA  
Telephone: +1-925-223-8242  
Fax: +1-925-223-8243  
E-mail: [bpgoffice@wjgnet.com](mailto:bpgoffice@wjgnet.com)  
Help Desk: <http://www.f6publishing.com/helpdesk>  
<http://www.wjgnet.com>



ISSN 1007-9327

