

World Journal of *Gastroenterology*

World J Gastroenterol 2020 July 21; 26(27): 3851-3997



GUIDELINES

- 3851** Expert consensus on management of metabolic disease in Chinese liver transplant recipients
Shen T, Zhuang L, Sun XD, Qi XS, Wang ZH, Li RD, Chang WX, Yang JY, Yang Y, Zheng SS, Xu X

REVIEW

- 3865** Histopathological landscape of rare oesophageal neoplasms
Businello G, Dal Pozzo CA, Sbaraglia M, Mastracci L, Milione M, Saragoni L, Grillo F, Parente P, Remo A, Bellan E, Cappellessio R, Pennelli G, Michelotto M, Fassan M

MINIREVIEWS

- 3889** Details determining the success in establishing a mouse orthotopic liver transplantation model
Li T, Hu Z, Wang L, Lv GY

ORIGINAL ARTICLE

Basic Study

- 3899** Liver structural transformation after partial hepatectomy and repeated partial hepatectomy in rats: A renewed view on liver regeneration
Tsomaia K, Patarashvili L, Karumidze N, Bebiashvili I, Azmaipharashvili E, Modebadze I, Dzidziguri D, Sareli M, Gusev S, Kordzaia D
- 3917** Hepatic microenvironment underlies fibrosis in chronic hepatitis B patients
Yao QY, Feng YD, Han P, Yang F, Song GQ

Retrospective Study

- 3929** Modified percutaneous transhepatic papillary balloon dilation for patients with refractory hepatolithiasis
Liu B, Cao PK, Wang YZ, Wang WJ, Tian SL, Hertzanu Y, Li YL
- 3938** Can contrast enhanced ultrasound differentiate intrahepatic cholangiocarcinoma from hepatocellular carcinoma?
Huang JY, Li JW, Ling WW, Li T, Luo Y, Liu JB, Lu Q
- 3952** Serum ceruloplasmin can predict liver fibrosis in hepatitis B virus-infected patients
Kang NL, Zhang JM, Lin MX, Chen XD, Huang ZX, Zhu YY, Liu YR, Zeng DW

Observational Study

- 3963** Acceptance on colorectal cancer screening upper age limit in South Korea
Luu XQ, Lee K, Lee YY, Suh M, Kim Y, Choi KS

Randomized Controlled Trial

- 3975** Transarterial chemoembolization with hepatic arterial infusion chemotherapy plus S-1 for hepatocellular carcinoma

Guo JH, Liu SX, Gao S, Kou FX, Zhang X, Wu D, Li XT, Chen H, Wang XD, Liu P, Zhang PJ, Xu HF, Cao G, Zhu LZ, Yang RJ, Zhu X

CASE REPORT

- 3989** Intestinal NK/T cell lymphoma: A case report

Li H, Lyu W

ABOUT COVER

Amedeo Amedei graduated in Biology at Florence University in 1996. He started his scientific career studying the role of Th1/Th2 lymphocytes in GVHD, atopic dermatitis and kidney rejection. In 2003 began his doctor's degree in "Clinical and Experimental Medicine". In 2005, he became researcher at Department of Experimental and Clinical Medicine (University of Florence), where in 2015 he was appointed Associate Professor. Recently, Prof. Amedei has focused his scientific interests on the cancer immunology and the role of microbiome. The great quality of his international profile is documented by scientific production: 144 peer reviewed articles (7056 citations, h-index: 43.04), 8 book chapters and one patent. Prof. Amedei is serving as an Editorial Board member of 30 international journals, as referee of 43 journal, as Co-Editor-Chief and carries out activities as scientific reviewer for international research projects of private and public entities. From 2016 he is in the Scientific Council of "Toscana Life Sciences".

AIMS AND SCOPE

The primary aim of *World Journal of Gastroenterology* (WJG, *World J Gastroenterol*) is to provide scholars and readers from various fields of gastroenterology and hepatology with a platform to publish high-quality basic and clinical research articles and communicate their research findings online. WJG mainly publishes articles reporting research results and findings obtained in the field of gastroenterology and hepatology and covering a wide range of topics including gastroenterology, hepatology, gastrointestinal endoscopy, gastrointestinal surgery, gastrointestinal oncology, and pediatric gastroenterology.

INDEXING/ABSTRACTING

The WJG is now indexed in Current Contents®/Clinical Medicine, Science Citation Index Expanded (also known as SciSearch®), Journal Citation Reports®, Index Medicus, MEDLINE, PubMed, PubMed Central, and Scopus. The 2020 edition of Journal Citation Report® cites the 2019 impact factor (IF) for WJG as 3.665; IF without journal self cites: 3.534; 5-year IF: 4.048; Ranking: 35 among 88 journals in gastroenterology and hepatology; and Quartile category: Q2.

RESPONSIBLE EDITORS FOR THIS ISSUE

Electronic Editor: *Yun-Jie Ma*; Production Department Director: *Xiang Li*; Editorial Office Director: *Ze-Mao Gong*.

NAME OF JOURNAL

World Journal of Gastroenterology

ISSN

ISSN 1007-9327 (print) ISSN 2219-2840 (online)

LAUNCH DATE

October 1, 1995

FREQUENCY

Weekly

EDITORS-IN-CHIEF

Andrzej S Tarnawski, Subrata Ghosh

EDITORIAL BOARD MEMBERS

<http://www.wjgnet.com/1007-9327/editorialboard.htm>

PUBLICATION DATE

July 21, 2020

COPYRIGHT

© 2020 Baishideng Publishing Group Inc

INSTRUCTIONS TO AUTHORS

<https://www.wjgnet.com/bpg/gerinfo/204>

GUIDELINES FOR ETHICS DOCUMENTS

<https://www.wjgnet.com/bpg/GerInfo/287>

GUIDELINES FOR NON-NATIVE SPEAKERS OF ENGLISH

<https://www.wjgnet.com/bpg/gerinfo/240>

PUBLICATION ETHICS

<https://www.wjgnet.com/bpg/GerInfo/288>

PUBLICATION MISCONDUCT

<https://www.wjgnet.com/bpg/gerinfo/208>

ARTICLE PROCESSING CHARGE

<https://www.wjgnet.com/bpg/gerinfo/242>

STEPS FOR SUBMITTING MANUSCRIPTS

<https://www.wjgnet.com/bpg/GerInfo/239>

ONLINE SUBMISSION

<https://www.f6publishing.com>



Retrospective Study

Modified percutaneous transhepatic papillary balloon dilation for patients with refractory hepatolithiasis

Bin Liu, Pi-Kun Cao, Yong-Zheng Wang, Wu-Jie Wang, Shi-Lin Tian, Yancu Hertzanu, Yu-Liang Li

ORCID number: Bin Liu 0000-0003-1686-1553; Pi-Kun Cao 0000-0003-2973-7527; Yong-Zheng Wang 0000-0001-5889-2118; Wu-Jie Wang 0000-0001-9431-7153; Shi-Lin Tian 0000-0002-7112-7776; Yancu Hertzanu 0000-0001-9915-4074; Yu-Liang Li 0000-0001-8117-4317.

Author contributions: Liu B contributed to the study concept and design, analysis and interpretation of the data, drafting of the manuscript, and statistical analysis, and obtained funding; Cao PK contributed to the acquisition of data, analysis and interpretation of data, and statistical analysis; Wang YZ contributed to the technical support and critical revision of the manuscript for important intellectual content; Wang WJ contributed to the technical support and statistical analysis; Tian SL contributed to the acquisition of data and material support; Hertzanu Y contributed to the critical revision of the manuscript for important intellectual content; Li YL contributed to the study concept and design, study supervision, critical revision of the manuscript for important intellectual content, and obtained funding.

Supported by Natural Science

Bin Liu, Yong-Zheng Wang, Wu-Jie Wang, Yancu Hertzanu, Yu-Liang Li, Department of Interventional Medicine, The Second Hospital of Shandong University, Jinan 250033, Shandong Province, China

Bin Liu, Yong-Zheng Wang, Wu-Jie Wang, Yancu Hertzanu, Yu-Liang Li, Interventional Oncology Institute of Shandong University, Jinan 250033, Shandong Province, China

Pi-Kun Cao, Department of Cancer Center, The First Affiliated Hospital of Shandong First Medical University, Jinan 250014, Shandong Province, China

Shi-Lin Tian, School of Medicine, Shandong University, Jinan 250014, Shandong Province, China

Corresponding author: Yu-Liang Li, MD, Chief Doctor, Professor, Department of Interventional Medicine, The Second Hospital of Shandong University; Interventional Oncology Institute of Shandong University, No. 247, Beiyuan Road, Jinan 250033, Shandong Province, China. lyl.pro@sdu.edu.cn

Abstract

BACKGROUND

Some patients with hepatolithiasis cannot tolerate surgery due to severe cardiac or pulmonary comorbidities, or cannot be endoscopically treated because of altered gastrointestinal anatomies.

AIM

To propose a modified percutaneous transhepatic papillary balloon dilation procedure, and evaluate the clinical efficacy and safety of this modality.

METHODS

Data from 21 consecutive patients who underwent modified percutaneous transhepatic papillary balloon dilation with hepatolithiasis were retrospectively analyzed. Using auxiliary devices, intrahepatic bile duct stones were pushed into the common bile duct and expelled into the duodenum with an inflated balloon catheter. The outcomes recorded included success rate, procedure time, hospital stay, causes of failure, and procedure-related complications. Patients with possible long-term complications were followed up for 2 years.

RESULTS

Foundation of Shandong Province, No. ZR2018PH032 and No. ZR2018PH033; and National Natural Science Foundation of China, No. 61671276 and No. 11971269.

Institutional review board

statement: This study was approved by the ethics committee of the Second Hospital of Shandong University, No. KYLL-2014(LW)02.

Informed consent statement: All participants provided written informed consent.

Conflict-of-interest statement: All authors declare no conflicts-of-interest related to this article.

Data sharing statement: No additional data are available.

Open-Access: This article is an open-access article that was selected by an in-house editor and fully peer-reviewed by external reviewers. It is distributed in accordance with the Creative Commons Attribution NonCommercial (CC BY-NC 4.0) license, which permits others to distribute, remix, adapt, build upon this work non-commercially, and license their derivative works on different terms, provided the original work is properly cited and the use is non-commercial. See: <http://creativecommons.org/licenses/by-nc/4.0/>

Manuscript source: Unsolicited manuscript

Received: May 6, 2020

Peer-review started: May 6, 2020

First decision: May 21, 2020

Revised: May 24, 2020

Accepted: July 4, 2020

Article in press: July 4, 2020

Published online: July 21, 2020

P-Reviewer: Dik VK, Malieckal A, Treepongkaruna S, Wang MH

S-Editor: Wang JL

L-Editor: Filipodia

E-Editor: Ma YJ



Intrahepatic bile duct stones were successfully removed in 20 (95.23%) patients. Mean procedure time was 65.8 ± 5.3 min. Mean hospital stay was 10.7 ± 1.5 d. No pancreatitis, gastrointestinal, or biliary duct perforation was observed. All patients were followed up for 2 years, and there was no evidence of reflux cholangitis or calculi recurrence.

CONCLUSION

Modified percutaneous transhepatic papillary balloon dilation was feasible and safe with a small number of patients with hepatolithiasis, and may be a treatment option in patients with severe comorbidities or in patients in whom endoscopic procedure was not successful.

Key words: Intrahepatic cholestasis; Sphincter of Oddi; Dilation; Common bile duct; Percutaneous; Balloon

©The Author(s) 2020. Published by Baishideng Publishing Group Inc. All rights reserved.

Core tip: Some patients with hepatolithiasis cannot tolerate surgery due to severe cardiac or pulmonary comorbidities, or cannot be endoscopically treated because of altered gastrointestinal anatomies. For these patients, modified percutaneous transhepatic papillary balloon dilation, providing a path with compliance and only requiring intravenous anesthesia, should be considered as a treatment option, especially when the endoscopic procedure is not successful.

Citation: Liu B, Cao PK, Wang YZ, Wang WJ, Tian SL, Hertzanu Y, Li YL. Modified percutaneous transhepatic papillary balloon dilation for patients with refractory hepatolithiasis. *World J Gastroenterol* 2020; 26(27): 3929-3937

URL: <https://www.wjgnet.com/1007-9327/full/v26/i27/3929.htm>

DOI: <https://dx.doi.org/10.3748/wjg.v26.i27.3929>

INTRODUCTION

Hepatolithiasis is defined as the presence of gall stones in the bile duct peripheral to the confluence of the right and left hepatic duct. It is a benign disease, but with a poor prognosis due to possible complications including recurrent intrahepatic stones, secondary common bile duct (CBD) stones, biliary strictures, recurrent cholangitis, biliary cirrhosis, liver atrophy, and intrahepatic cholangiocarcinoma^[1,2].

Hepatolithiasis is present with the coexistence of choledocholithiasis or cholecystolithiasis in 70% of patients. This disease is prevalent in Eastern Asia^[3-7], but rare in Western countries^[8]. However, population migration has resulted in the increased prevalence in the West^[9]. Several factors are related to hepatolithiasis including parasitic infestation^[10], bacterial infection^[11], bile stasis, diet and anatomy^[12].

As one of the most complex cholelithiasis, the treatment is complicated and difficult requiring a team including interventional radiologist, gastroenterologist and surgeons, and has improved due to advanced technologies. The combined approach is percutaneous, endoscopic, and surgical^[13].

Based on our previous experience, for certain groups of elderly patients suffering from CBD stones with previous gastrointestinal surgery, gastrointestinal anatomical abnormalities, esophageal and gastric varices, severe cardiac or pulmonary comorbidities, endoscopic procedures or surgery may be difficult to perform, and percutaneous transhepatic papillary balloon dilation (PTPBD) could be an alternative^[14,15]. We evaluated the clinical efficacy and safety of a modified PTPBD for the removal of intrahepatic bile duct stones in patients with severe comorbidities, especially when endoscopic retrograde cholangio-pancreatography (ERCP) was not successful.

MATERIALS AND METHODS

From February 2014 to June 2015, 21 patients admitted with hepatolithiasis (16 cases with concomitant CBD stones) diagnosed by ultrasonography, computed tomography (CT) or magnetic resonance cholangiopancreatography (MRCP) (Figure 1) were enrolled and underwent modified PTPBD. This retrospective study was approved by the ethics committee and all patients provided written informed consent.

Laboratory values, including white blood cell (WBC) count, total bilirubin (TBIL), direct bilirubin (DBIL), aspartate aminotransferase (AST), albumin (ALB), and amylase were obtained using routine laboratory tests.

Inclusion criteria included: (1) Intrahepatic stones in the right or left hepatic duct with symptoms of obstructive jaundice, pain, or fever; (2) Intolerance of endotracheal anesthesia; (3) Inability to tolerate or refuse to undergo open surgical, laparoscopic, or cholangioscopic procedures; (4) Predicted life span ≥ 1 year; and (5) Karnofsky score > 70 .

Exclusion criteria included: (1) Concomitant CBD stone with a diameter > 20 mm; (2) Four or more intrahepatic stones; (3) Severe cardiac insufficiency (New York Heart Association class III-IV) or advanced lung disease (determined by consultation with respiratory disease specialists), liver disease (Child-Pugh class C), or advanced renal dysfunction (stage G3 to G5 of chronic kidney disease); and (4) Severe coagulopathy (prothrombin time > 17 s and/or platelet count $\leq 60 \times 10^9/L$).

Procedure: Modified PTPBD

All procedures were performed with intravenous anesthesia. The intrahepatic bile duct (usually right) was punctured under ultrasonic sound and fluoroscopic guidance. Cholangiography with diluted contrast media delineated biliary duct anatomy and revealed the location, number and size of the bile duct stones (Figure 2A). An 8- to 14-French introducer sheath was inserted into the punctured branch, and then a 150-cm-long guidewire was advanced into the intrahepatic bile duct branch peripheral to the stones, with the help of a 5-French tapered-angle angiographic catheter. A stiff 260-cm-long guidewire was exchanged into the bile duct. Affected bile duct was dilated with a balloon (Advance 35LP; Cook Medical, Bloomington, IN, United States) if stenosis was present (Figure 2B). A Fogarty catheter (Edwards Lifesciences, Irvine, CA, United States) was introduced along the guidewire, crossing the stones into the peripheral bile duct branch. The balloon was inflated and stones were pushed into CBD (Figure 2C and D). For large stones, basket mechanical lithotripsy was used to reduce the stone size. For stones located in the punctured bile duct with no or moderate stenosis, injection of saline through the sheath or a moderately inflated balloon dilation catheter was used to push the stones into the CBD (Figure 3A and B).

Stones in CBD should be managed according to the procedure, which has been described in our previous publications^[14,15]. The papilla was gradually and intermittently dilated until the balloon's "waist" disappeared (Figure 2E). The inflation process took 30 to 60 s and the dilation was repeated 3 to 4 times for each patient^[10,11]. The balloon size depended on the diameter of the dilated CBD and largest stone, and ranged from 10 to 20 mm. After sphincter dilatation, stones were pushed into the duodenum through the dilated papilla (Figure 2F). After the procedure, the stools of each patient were checked for 1 wk to collect the stones. Stone number and sizes were estimated according to imaging modalities and stools. After 1 wk, cholangiography was performed to exclude residual stone. PTPBD was performed again if there were residual stones. If not, the drainage catheter was withdrawn.

Follow-up

Recorded outcomes included success rate, procedure time, hospital stay, causes of failure, and procedure-related complications. The levels of WBC count, TBIL, DBIL, AST and serum amylase were recorded before the procedure, at 1 wk, and at 1, 3, 6, 12, 18, and 24 mo after the procedure. Imaging modalities such as ultrasound (preferred examination), CT, or MRCP were repeated during follow-up every 3 mo. Biliary duct infection, hemorrhage, pancreatitis, and gastrointestinal and biliary duct perforation, considered as short-term complications, were assessed before discharge. Long-term complications such as reflux cholangitis and calculi recurrence were recorded for 2 years.

Statistical analysis

Continuous variables with normal distribution are expressed as mean \pm standard deviation (SD), and analyzed with the Student's *t*-test. Continuous variables with

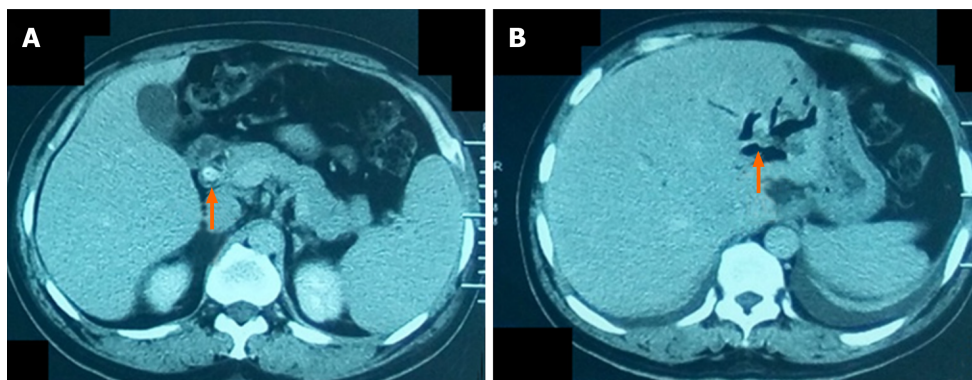


Figure 1 A 58-yr-old man with common bile duct stone and intrahepatic bile duct stone. A: Computed tomography after contrast administration of the common bile duct stone (arrow); B: Computed tomography without contrast of the intrahepatic bile duct stone (arrow).

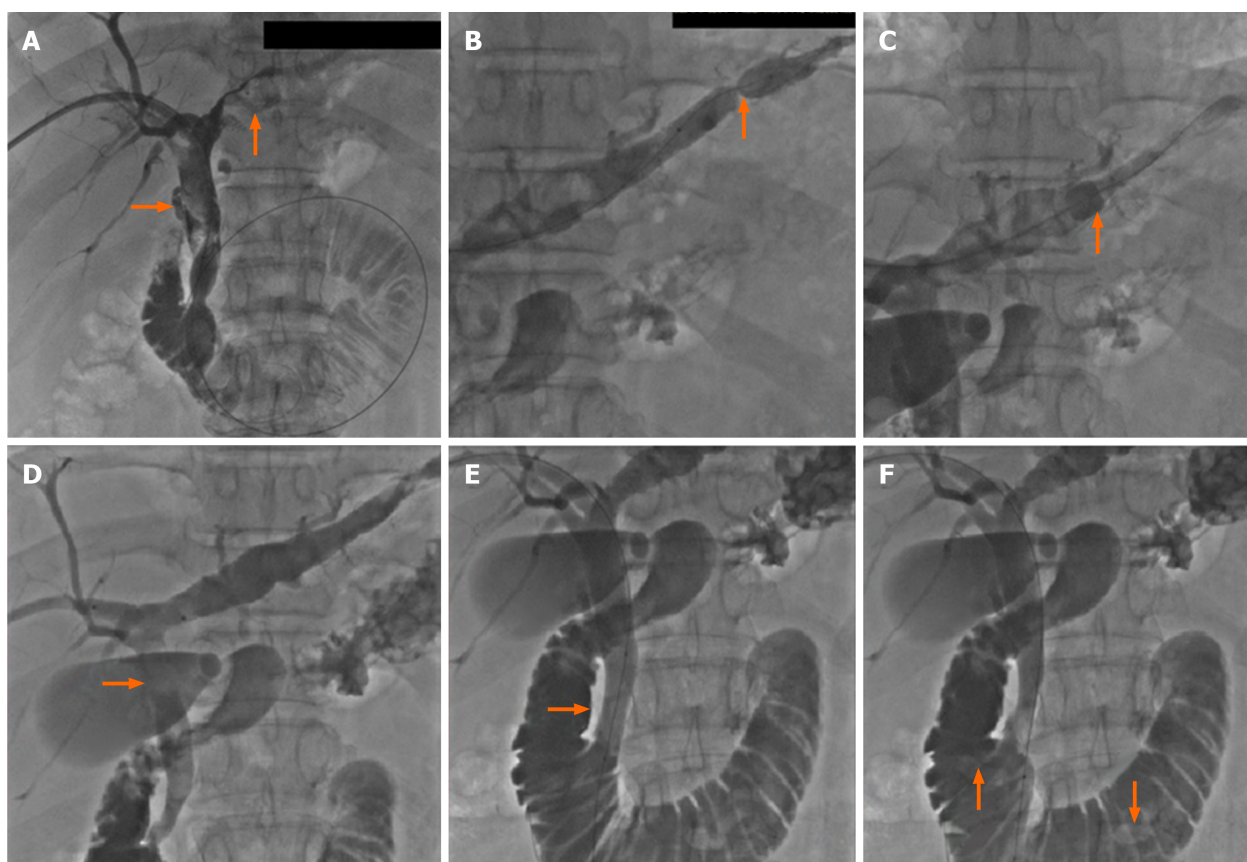


Figure 2 Cholangiography. A: Cholangiography revealed the location, size, and number of the intrahepatic and common bile duct stones; B: The left bile duct with stones was dilated with a balloon catheter in presence of stenosis; C: The intrahepatic bile duct stone was pushed with a dilated Fogarty catheter; D: Stone was pushed into common bile duct; E: The papilla was dilated; F: Stones in the common bile duct were pushed into the duodenum.

unnorm distribution were expressed as the median and interquartile range, and analyzed with the rank sum test. Categorical variables were presented as number and percentage, and analyzed using the χ^2 test. All data were analyzed with SPSS version 24.0 (SPSS Inc., Chicago, IL, United States). $P < 0.05$ was considered statistically significant.

RESULTS

There were 11 men and 10 women aged 51 to 82 (mean, 68.3 ± 4.2) years. Eleven patients (52.4%) with concomitant intrahepatic and CBD stones were admitted with obstructive jaundice. Six patients (28.6%) suffered from intermittent fever and four

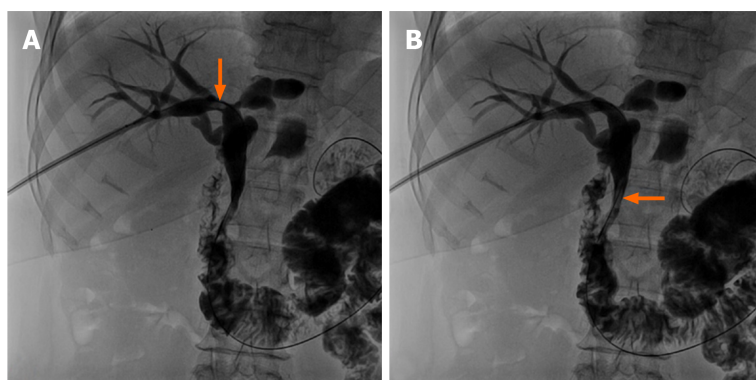


Figure 3 For stones located in the punctured bile duct with no or moderate stenosis, injection of saline through the sheath or a moderately inflated balloon dilation catheter was used to push the stones into common bile duct. A: A stone (arrow) located in the right hepatic bile duct; B: Saline was injected through the sheath and the stone was pushed into the common bile duct (arrow).

patients (19%) from abdominal pain. All cases were diagnosed with cardiac or pulmonary diseases including pulmonary emphysema, respiratory insufficiency, coronary heart disease, and cardiac insufficiency.

The mean age of the 21 patients was 68.3 ± 4.2 years old. A total of 36 intrahepatic stones were successfully expelled into the duodenum by modified PTPBD in 20 (95.23%) patients. The diameters of intrahepatic stones ranged from 5 to 15 mm. The diameter of 17 (47.22%) stones was < 10 mm and 19 (52.78%) ranged from 10 to 15 mm. Concomitant CBD stones were present in 16 patients, with stone size between 5 to 20 mm. Characteristics of patients and treatments are summarized in Table 1. Mean procedure time was 65.8 ± 5.3 min. PTPBD was repeated in one patient due to residual stones. Mean hospitalization was 10.7 ± 1.5 d.

The procedure failed in one patient because of stone impaction in the intrahepatic bile duct. The inflated Fogarty catheter could not push the stone into the CBD. The patient was transferred to the Department of General Surgery and underwent percutaneous transhepatic cholangioscopy.

Abdominal pain was common during papillary dilation but was relieved immediately after the procedure. The symptoms of jaundice disappeared after the procedure in all patients. WBC count, TBIL, DBIL, and AST declined markedly after the procedure. The differences in these indexes before and 1 wk after the procedure were significant. In contrast, ALB concentration significantly increased after the procedure (Table 2).

Fever and chills suggesting biliary duct infection, occurred in 2 patients (9.52%), and subsided after antibiotic therapy for 2 to 3 d. Mild elevated serum amylase was seen in one patient (4.76%), without sign of peritoneal irritation or fever and decreased to normal levels in 2 d after procedure. We considered it a minimal subclinical reaction and not true pancreatitis. No sign of gastrointestinal or biliary duct perforation were present. All patients were followed up for 2 years, and there was no evidence of reflux cholangitis and calculi recurrence.

DISCUSSION

Vachell *et al*^[16] first reported intrahepatic calculi in 1906. The incidence was reported to be 20%-30% of all patients undergoing surgery for gallstone disease. Most patients are affected in the 3rd to 7th decades on life with equal gender distribution. Concomitant intrahepatic and extrahepatic stones are found in approximately 70% of all hepatolithiasis cases^[7,17].

Hepatolithiasis is characterized by recurrent pyogenic cholangitis with inflammatory bile duct wall leading to progressive biliary stricture, causing bile stasis, liver atrophy, and cholangiocarcinoma^[18]. In China, 80% of patients with peripheral intrahepatic cholangiocarcinoma have associated intrahepatic stones^[19,20].

The aims of treatment are prevention of liver damage by elimination of stones and recovery of bile fluidity and includes stone clearance, recovery of bile duct stricture, and providing good drainage of bile^[21-23]. Surgical options are considered by many authors the preferred treatment. However, the surgical procedure has significant morbidity and mortality. ERCP is used for papillotomy, sphincterotomy and retrieval

Table 1 Patient and treatment characteristics

Characteristic	n (%)
No. of patients	21
Gender	
Female	10 (47.6)
Male	11 (58.8)
Comorbidity	
Emphysema	5 (23.8)
Pulmonary insufficiency	6 (28.6)
Coronary artery disease	4 (19)
Cardiac insufficiency	5 (23.8)
Hypoproteinemia	1 (4.8)
Concomitant CBD stones	16 (76.2)
Symptoms	
Obstructive jaundice	11 (52.4)
Fever	6 (28.6)
Abdominal pain	4 (19)
Success rate	20 (95.2)
No. of IHS	36
Diameter of largest IHS	
5-10 mm	17 (47.2)
10-15 mm	19 (52.8)
No. of CBD stones	22
Diameter of Largest CBD stones	
5-10 mm	4 (18.2)
10-15 mm	5 (22.7)
15-20 mm	8 (36.4)
20-25 mm	4 (18.2)
25-28 mm	1 (4.5)
Total No. of stones	58
Types of stones	
Cholesterol stone	27 (45.7)
Mixed stone	25 (43.1)
Bilirubin stone	6 (10.3)

IHS: Intrahepatic bile duct stones; CBD: Common bile duct.

basket for stone extraction, which should be considered the first attempt to treat hepatolithiasis. The application is limited because large or impacted stones could not be easily managed by conventional endoscopy. Brewer Gutierrez *et al*^[24] reported peroral cholangioscopy with the development of flexible, high-resolution endoscopes have enabled successful endoscopic therapy in laser and electrohydraulic treatment in > 85% of patients. However, such a procedure cannot be performed in most hospitals in China due to the lack of access to cholangioscopy. In addition, for patients with altered gastrointestinal anatomies, the endoscopic procedure could be very difficult. Endoluminal approach with intraductal lithotripsy combined with extracorporeal shock wave lithotripsy may remove stones in approximately 66% of patients.

Table 2 Relevant variables before and 1 wk after the procedure

Laboratory variables	Before the procedure	1 wk after the procedure	P value ¹
AST, U/L	128.6 ± 14.3	42.8 ± 7.9	0.0069
TBIL, μmol/L	169.5 ± 16.7	68.7 ± 8.4	0.0093
DBIL, μmol/L	110.7 ± 19.4	35.2 ± 6.3	0.0054
WBC, 10 ⁹ /L	23.9 ± 3.3	11.4 ± 2.8	0.037
ALB, g/L	20.8 ± 2.6	33.5 ± 1.7	0.041

¹Rank sum test for paired samples. Data are presented as mean ± standard deviation. AST: Aspartate aminotransferase; TBIL: Total bilirubin; DBIL: Direct bilirubin; WBC: White blood cell; ALB: Albumin.

Percutaneous options provide biliary drainage, with transhepatic placement of catheters, stents, basket/balloon catheters and cholangiography to detect or confirm clearance of biliary stones. Percutaneous approach is advantageous for high-surgical-risk patients with altered gastrointestinal anatomies, multiple stones in several segments or patients rejected to undergo surgery.

Furthermore, patients with cardiac or pulmonary comorbidities may not tolerate endotracheal anesthesia and surgery. Therefore, modified PTPBD under intravenous anesthesia has advantages and such patients may benefit from this procedure.

In 2000, Shirai *et al*^[25] reported that PTPBD could relieve obstructive jaundice caused by CBD stones. To the best of our knowledge, our team performed the first PTPBD procedure to treat CBD in China in 2008^[26]. Compared with ERCP, the inflated balloon dilates the entire papilla but keeps the whole structure intact^[27], with low incidences of biliary duct infection and hemorrhage and no pancreatitis or perforation of the gastrointestinal or biliary duct^[26].

The first step for hepatolithiasis is to move the stones into CBD. A Fogarty balloon catheter is useful for small stones, while a mechanical basket crushes and reduces the size of large stones. The presence of bile duct stenosis has been considered a cause of lithogenesis and stone recurrence. Bile stenosis is also a major factor in hepatic atrophy and cholangiocarcinoma developing^[28]. Therefore, balloon dilation is necessary when bile duct stenosis is present.

Simultaneous CBD stones are not contraindications. However, the size of CBD stones should be limited. Endoscopic treatments, including endoscopic sphincterotomy and endoscopic papillary balloon dilation, usually consider stones with a diameter exceeding 10 mm to 12 mm as large stones^[28,29]. For these difficult cases, percutaneous approach with a large balloon (≥ 10mm) and long-term dilation could be safer, and the short procedure time remarkably decreased the incidence of pancreatitis. This is a significant advantage and was verified in our clinical practice and in previous studies of PTPBD^[14,15,25,26]. The maximum balloon diameter we used in this study was 20 mm and no pancreatitis occurred after the procedure (unpublished data). Hence, the maximum diameter of CBD stones was determined to be no larger than 20 mm in this study.

As in endoscopic procedures, multiple stones are challenging in PTPBD. Repeated procedure may damage mucosa, causing bleeding and local edema, while an extended procedure time may increase the cardiopulmonary morbidities and anesthetic risk. Based on the current experience of our team, PTPBD should not be attempted if there are four or more stones.

Nevertheless, this study had two limitations. First, as a pilot study, the number of patients was small, and this method is devised for a specific subset of patients in one center. Second, the retrospective character of the study may have caused a selection bias of cases.

In conclusion, our results indicate that modified PTPBD is a safe, feasible, and effective treatment option for intrahepatic bile duct stones. It is a new alternative procedure for a small number of patients with hepatolithiasis and may be a treatment option in patients with severe comorbidities or in patients in which ERCP was not successful. A prospective study in multiple centers and the generalizability of our findings to the broader population will be investigated in the future.

ARTICLE HIGHLIGHTS

Research background

The treatment of hepatolithiasis is complicated and difficult. Some patients cannot tolerate surgery due to severe cardiac or pulmonary comorbidities, or cannot be treated with endoscopy because of altered gastrointestinal anatomies.

Research motivation

Our previous experience indicated percutaneous transhepatic papillary balloon dilation (PTPBD) could be an alternative for common bile duct stones.

Research objectives

In this retrospective study, the clinical efficacy and safety of modified PTPBD were assessed for the removal of intrahepatic bile duct stones in patients with cardiopulmonary comorbidities or altered gastrointestinal anatomies.

Research methods

Twenty-one patients with intrahepatic bile duct stones who underwent modified PTPBD were enrolled in this study. Outcomes, including success rate, cause of failure, complications, procedure time and hospital stay, were analyzed. Reflux cholangitis and calculi recurrence were recorded for 2 years.

Research results

The success rate was 95.23%. No pancreatitis or perforation occurred. No evidence of reflux cholangitis and calculi recurrence were observed for 2 years.

Research conclusions

Modified PTPBD could be considered as a safe, feasible, and effective treatment option for intrahepatic bile duct stones in patients with cardiopulmonary comorbidities or altered gastrointestinal anatomies.

Research perspectives

Multi-center prospective study should be conducted to compare modified PTPBD to surgery or endoscopic procedures to gain more evidence.

REFERENCES

- 1 **Blechacz B**, Komuta M, Roskams T, Gores GJ. Clinical diagnosis and staging of cholangiocarcinoma. *Nat Rev Gastroenterol Hepatol* 2011; **8**: 512-522 [PMID: [21808282](#) DOI: [10.1038/nrgastro.2011.131](#)]
- 2 **Tyson GL**, El-Serag HB. Risk factors for cholangiocarcinoma. *Hepatology* 2011; **54**: 173-184 [PMID: [21488076](#) DOI: [10.1002/hep.24351](#)]
- 3 **Catena M**, Aldrighetti L, Finazzi R, Arzu G, Arru M, Pulitanò C, Ferla G. Treatment of non-endemic hepatolithiasis in a Western country. The role of hepatic resection. *Ann R Coll Surg Engl* 2006; **88**: 383-389 [PMID: [16834860](#) DOI: [10.1308/003588406X98711](#)]
- 4 **Park Y**, Kim D, Lee JS, Kim YN, Jeong YK, Lee KG, Choi D. Association between diet and gallstones of cholesterol and pigment among patients with cholecystectomy: a case-control study in Korea. *J Health Popul Nutr* 2017; **36**: 39 [PMID: [29169372](#) DOI: [10.1186/s41043-017-0116-y](#)]
- 5 **Chang CM**, Chiu THT, Chang CC, Lin MN, Lin CL. Plant-Based Diet, Cholesterol, and Risk of Gallstone Disease: A Prospective Study. *Nutrients* 2019; **11**: 335 [PMID: [30720747](#) DOI: [10.3390/nu11020335](#)]
- 6 **Park YH**, Park SJ, Jang JY, Ahn YJ, Park YC, Yoon YB, Kim SW. Changing patterns of gallstone disease in Korea. *World J Surg* 2004; **28**: 206-210 [PMID: [14708060](#) DOI: [10.1007/s00268-003-6879-x](#)]
- 7 **Tazuma S**. Gallstone disease: Epidemiology, pathogenesis, and classification of biliary stones (common bile duct and intrahepatic). *Best Pract Res Clin Gastroenterol* 2006; **20**: 1075-1083 [PMID: [17127189](#) DOI: [10.1016/j.bpg.2006.05.009](#)]
- 8 **Kayhan B**, Akdoğan M, Parlak E, Ozarslan E, Sahin B. Hepatolithiasis: a Turkey experience. *Turk J Gastroenterol* 2007; **18**: 28-32 [PMID: [17450492](#)]
- 9 **Park HS**, Lee JM, Kim SH, Jeong JY, Kim YJ, Lee KH, Choi SH, Han JK, Choi BI. CT Differentiation of cholangiocarcinoma from periductal fibrosis in patients with hepatolithiasis. *AJR Am J Roentgenol* 2006; **187**: 445-453 [PMID: [16861550](#) DOI: [10.2214/AJR.05.0247](#)]
- 10 **Khuroo MS**, Rather AA, Khuroo NS, Khuroo MS. Hepatobiliary and pancreatic ascariasis. *World J Gastroenterol* 2016; **22**: 7507-7517 [PMID: [27672273](#) DOI: [10.3748/wjg.v22.i33.7507](#)]
- 11 **Sheen-Chen S**, Chen W, Eng H, Sheen C, Chou F, Cheng Y, Lee T. Bacteriology and antimicrobial choice in hepatolithiasis. *Am J Infect Control* 2000; **28**: 298-301 [PMID: [10926707](#) DOI: [10.1067/mic.2000.107071](#)]
- 12 **Nitin Rao AR**, Chui AK. Intrahepatic stones - an etiological quagmire. *Indian J Gastroenterol* 2004; **23**: 201-202 [PMID: [15111111](#)]

- 15627656]
- 13 **Cha SW**. [Management of Intrahepatic Duct Stone]. *Korean J Gastroenterol* 2018; **71**: 247-252 [PMID: 29791982 DOI: 10.4166/kjg.2018.71.5.247]
 - 14 **Wang W**, Wang C, Qi H, Wang Y, Li Y. Percutaneous transcystic balloon dilation for common bile duct stone removal in high-surgical-risk patients with acute cholecystitis and co-existing choledocholithiasis. *HPB (Oxford)* 2018; **20**: 327-331 [PMID: 29146469 DOI: 10.1016/j.hpb.2017.10.002]
 - 15 **Li D**, Li YL, Wang WJ, Liu B, Chang HY, Wang W, Wang YZ, Li Z. Percutaneous transhepatic papilla balloon dilatation combined with a percutaneous transcystic approach for removing concurrent gallbladder stone and common bile duct stone in a patient with billroth II gastrectomy and acute cholecystitis: A case report. *Medicine (Baltimore)* 2017; **96**: e7964 [PMID: 28858128 DOI: 10.1097/MD.0000000000007964]
 - 16 **Vachell HR**, Stevens WM. Case of Intrahepatic Calculi. *Br Med J* 1906; **1**: 434-436 [PMID: 20762542 DOI: 10.1136/bmj.1.2356.434]
 - 17 **Blumgart LH**, Fong Y. Surgery of the Liver and Biliary Tract. 3rd ed. Philadelphia: W. B. Saunders Company, 2000
 - 18 **Kusano T**, Isa T, Ohtsubo M, Yasaka T, Furukawa M. Natural progression of untreated hepatolithiasis that shows no clinical signs at its initial presentation. *J Clin Gastroenterol* 2001; **33**: 114-117 [PMID: 11468436 DOI: 10.1097/00004836-200108000-00004]
 - 19 **Meng ZW**, Han SH, Zhu JH, Zhou LY, Chen YL. Risk Factors for Cholangiocarcinoma After Initial Hepatectomy for Intrahepatic Stones. *World J Surg* 2017; **41**: 835-843 [PMID: 27766397 DOI: 10.1007/s00268-016-3752-2]
 - 20 **Kim HJ**, Kim JS, Suh SJ, Lee BJ, Park JJ, Lee HS, Kim CD, Bak YT. Cholangiocarcinoma Risk as Long-term Outcome After Hepatic Resection in the Hepatolithiasis Patients. *World J Surg* 2015; **39**: 1537-1542 [PMID: 25648078 DOI: 10.1007/s00268-015-2965-0]
 - 21 **Cai X**, Wang Y, Yu H, Liang X, Peng S. Laparoscopic hepatectomy for hepatolithiasis: a feasibility and safety study in 29 patients. *Surg Endosc* 2007; **21**: 1074-1078 [PMID: 17516119 DOI: 10.1007/s00464-007-9306-9]
 - 22 **Gao JB**, Shi WJ, Hu ZJ, Bai LS, Chai XQ. Hepatectomy for hepatolithiasis among patients with a history of biliary surgery. *Int J Clin Exp Med* 2016; **9**: 13184-13189
 - 23 **Pan GD**, Yan LN, Li B, Lu SC, Zeng Y, Wen TF, Zhao JC, Cheng NS, Ma YK, Wang WT, Yang JY, Li ZH. Liver transplantation for patients with hepatolithiasis. *Hepatobiliary Pancreat Dis Int* 2005; **4**: 345-349 [PMID: 16109513]
 - 24 **Brewer Gutierrez OI**, Bekkali NLH, Rajman I, Sturgess R, Sejjal DV, Aridi HD, Sherman S, Shah RJ, Kwon RS, Buxbaum JL, Zulli C, Wassef W, Adler DG, Kushnir V, Wang AY, Krishnan K, Kaul V, Tzimas D, DiMaio CJ, Ho S, Petersen B, Moon JH, Elmunzer BJ, Webster GJM, Chen YI, Dwyer LK, Inamdar S, Patrick VB, Attwell A, Hosmer A, Ko C, Maurano A, Sarkar A, Taylor LJ, Gregory MH, Strand DS, Raza A, Kothari S, Harris JP, Kumta NA, Manvar A, Topazian MD, Lee YN, Spiceland CM, Trindade AJ, Bukhari MA, Sanaei O, Ngamruengphong S, Khashab MA. Efficacy and Safety of Digital Single-Operator Cholangioscopy for Difficult Biliary Stones. *Clin Gastroenterol Hepatol* 2018; **16**: 918-926.e1 [PMID: 29074446 DOI: 10.1016/j.cgh.2017.10.017]
 - 25 **Shirai N**, Hanai H, Kajimura M, Kataoka H, Yoshida K, Nakagawara M, Nemoto M, Nagasawa M, Kaneko E. Successful treatment of percutaneous transhepatic papillary dilation in patients with obstructive jaundice due to common bile duct stones after Billroth II gastrectomy: report of two emergent cases. *J Clin Gastroenterol* 2000; **30**: 91-93 [PMID: 10636221 DOI: 10.1097/00004836-200001000-00020]
 - 26 **Li YL**, Geng JL, Jia YM, Lu HL, Wang W, Liu B, Wang WJ, Chang HY, Wang YZ, Li Z. [Clinical study of percutaneous transhepatic balloon dilation: a novel procedure for common bile duct stone]. *Zhonghua Yi Xue Za Zhi* 2013; **93**: 3586-3589 [PMID: 24534307]
 - 27 **Ding J**, Li F, Zhu HY, Zhang XW. Endoscopic treatment of difficult extrahepatic bile duct stones, EPBD or EST: An anatomic view. *World J Gastrointest Endosc* 2015; **7**: 274-277 [PMID: 25789099 DOI: 10.4253/wjge.v7.i3.274]
 - 28 **Cai H**, Kong WT, Chen CB, Shi GM, Huang C, Shen YH, Sun HC. Cholelithiasis and the risk of intrahepatic cholangiocarcinoma: a meta-analysis of observational studies. *BMC Cancer* 2015; **15**: 831 [PMID: 26526500 DOI: 10.1186/s12885-015-1870-0]
 - 29 **Jin PP**, Cheng JF, Liu D, Mei M, Xu ZQ, Sun LM. Endoscopic papillary large balloon dilation vs endoscopic sphincterotomy for retrieval of common bile duct stones: a meta-analysis. *World J Gastroenterol* 2014; **20**: 5548-5556 [PMID: 24833886 DOI: 10.3748/wjg.v20.i18.5548]



Published by **Baishideng Publishing Group Inc**
7041 Koll Center Parkway, Suite 160, Pleasanton, CA 94566, USA

Telephone: +1-925-3991568

E-mail: bpgoffice@wjgnet.com

Help Desk: <https://www.f6publishing.com/helpdesk>

<https://www.wjgnet.com>

