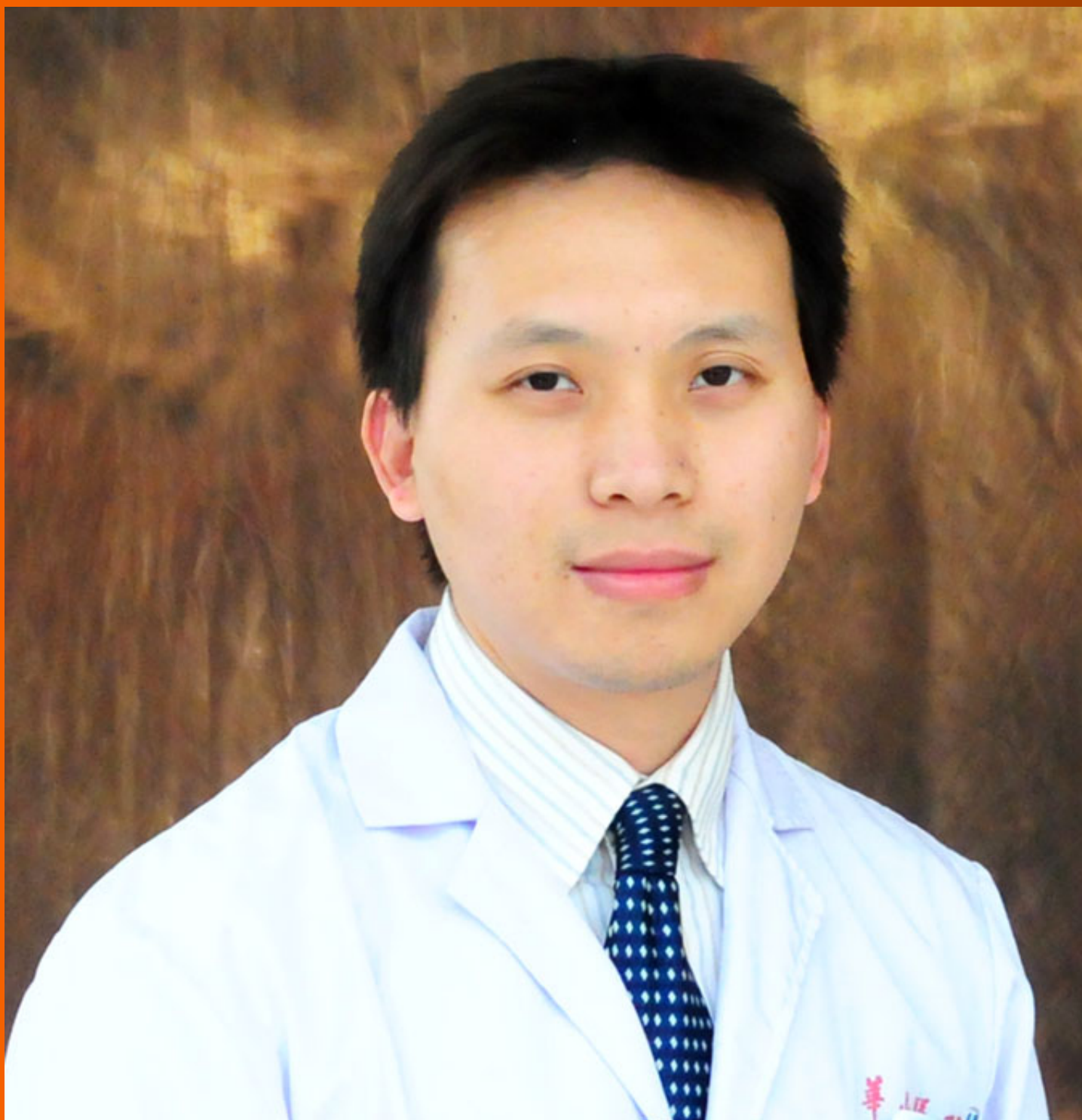


World Journal of *Gastroenterology*

World J Gastroenterol 2020 August 7; 26(29): 4182-4377



REVIEW

- 4182 Impact of mobile health and medical applications on clinical practice in gastroenterology
Kernebeck S, Busse TS, Böttcher MD, Weitz J, Ehlers J, Bork U
- 4198 Endoscopic management of gastrointestinal leaks and fistulae: What option do we have?
Cereatti F, Grassia R, Drago A, Conti CB, Donatelli G
- 4218 Watch and wait approach in rectal cancer: Current controversies and future directions
López-Campos F, Martín-Martín M, Fornell-Pérez R, García-Pérez JC, Die-Trill J, Fuentes-Mateos R, López-Durán S, Domínguez-Rullán J, Ferreira R, Riquelme-Oliveira A, Hervás-Morón A, Couñago F
- 4240 Role of long noncoding RNA-mediated competing endogenous RNA regulatory network in hepatocellular carcinoma
Niu ZS, Wang WH, Dong XN, Tian LML

MINIREVIEWS

- 4261 Gadoteric acid magnetic-enhanced resonance imaging in the diagnosis of cholangiocarcinoma
Inchingolo R, Maino C, Gatti M, Tricarico E, Nardella M, Grazioli L, Sironi S, Ippolito D, Faletti R

ORIGINAL ARTICLE

Basic Study

- 4272 Rno_circ_0005139 regulates apoptosis by targeting *Wnt5a* in rat anorectal malformations
Liu D, Qu Y, Cao ZN, Jia HM

Clinical and Translational Research

- 4288 Role of nutritional status and nutritional support in outcome of hepatitis B virus-associated acute-on-chronic liver failure
Chang Y, Liu QY, Zhang Q, Rong YM, Lu CZ, Li H

Retrospective Cohort Study

- 4302 Evaluation of intrahepatic manifestation and distant extrahepatic disease in alveolar echinococcosis
Graeter T, Bao HH, Shi R, Liu WY, Li WX, Jiang Y, Schmidberger J, Brumpt E, Delabrousse E, Kratzer W, the XUUB Consortium

Retrospective Study

- 4316 Multivariate predictive model for asymptomatic spontaneous bacterial peritonitis in patients with liver cirrhosis
Tu B, Zhang YN, Bi JF, Xu Z, Zhao P, Shi L, Zhang X, Yang G, Qin EQ

- 4327 Clinicopathological characteristics and surgical outcomes of sarcomatoid hepatocellular carcinoma

Wang JP, Yao ZG, Sun YW, Liu XH, Sun FK, Lin CH, Ren FX, Lv BB, Zhang SJ, Wang Y, Meng FY, Zheng SZ, Gong W, Liu J

Observational Study

- 4343 Patients' perspectives on smoking and inflammatory bowel disease: An online survey in collaboration with European Federation of Crohn's and Ulcerative Colitis Associations

Le Berre C, Loy L, Lönnfors S, Avedano L, Piovani D

META-ANALYSIS

- 4356 Dysregulation of microRNA in cholangiocarcinoma identified through a meta-analysis of microRNA profiling

Likhitrattanapisal S, Kumkate S, Ajawatanawong P, Wongprasert K, Tohtong R, Janvilisri T

CASE REPORT

- 4372 Multifocal gastrointestinal epithelioid angiosarcomas diagnosed by endoscopic mucosal resection: A case report

Chen YW, Dong J, Chen WY, Dai YN

ABOUT COVER

Editorial board member of *World Journal of Gastroenterology*, Dr. Feng Yang is a distinguished Associate Professor at the Shanghai Medical College Affiliated to Fudan University in Shanghai, China. Having received his Bachelor's degree from Fudan University in 2003, Dr. Yang undertook his postgraduate study and surgical resident training at the Department of Surgery in Huashan Hospital Affiliated to Fudan University, receiving his PhD in 2008. He became Associate Chief Physician at the Division of Pancreatic Surgery in Huashan Hospital Affiliated to Fudan University in 2015 and has held the position since. His ongoing research interests involve basic and clinical study of metastasis and recurrence of pancreatic neoplasms, including pancreatic carcinomas, neuroendocrine tumors and solid pseudopapillary tumors. Currently, he serves as a Young Member of the Pancreatic Cancer Committee, Chinese Anti-cancer Association. He also serves as a peer reviewer for many international academic journals.

AIMS AND SCOPE

The primary aim of *World Journal of Gastroenterology* (WJG, *World J Gastroenterol*) is to provide scholars and readers from various fields of gastroenterology and hepatology with a platform to publish high-quality basic and clinical research articles and communicate their research findings online. WJG mainly publishes articles reporting research results and findings obtained in the field of gastroenterology and hepatology and covering a wide range of topics including gastroenterology, hepatology, gastrointestinal endoscopy, gastrointestinal surgery, gastrointestinal oncology, and pediatric gastroenterology.

INDEXING/ABSTRACTING

The WJG is now indexed in Current Contents®/Clinical Medicine, Science Citation Index Expanded (also known as SciSearch®), Journal Citation Reports®, Index Medicus, MEDLINE, PubMed, PubMed Central, and Scopus. The 2020 edition of Journal Citation Report® cites the 2019 impact factor (IF) for WJG as 3.665; IF without journal self cites: 3.534; 5-year IF: 4.048; Ranking: 35 among 88 journals in gastroenterology and hepatology; and Quartile category: Q2.

RESPONSIBLE EDITORS FOR THIS ISSUE

Electronic Editor: Yu-Jie Ma; Production Department Director: Xiang Li; Editorial Office Director: Ze-Mao Gong.

NAME OF JOURNAL

World Journal of Gastroenterology

ISSN

ISSN 1007-9327 (print) ISSN 2219-2840 (online)

LAUNCH DATE

October 1, 1995

FREQUENCY

Weekly

EDITORS-IN-CHIEF

Andrzej S Tarnawski, Subrata Ghosh

EDITORIAL BOARD MEMBERS

<http://www.wjgnet.com/1007-9327/editorialboard.htm>

PUBLICATION DATE

August 7, 2020

COPYRIGHT

© 2020 Baishideng Publishing Group Inc

INSTRUCTIONS TO AUTHORS

<https://www.wjgnet.com/bpg/gerinfo/204>

GUIDELINES FOR ETHICS DOCUMENTS

<https://www.wjgnet.com/bpg/GerInfo/287>

GUIDELINES FOR NON-NATIVE SPEAKERS OF ENGLISH

<https://www.wjgnet.com/bpg/gerinfo/240>

PUBLICATION ETHICS

<https://www.wjgnet.com/bpg/GerInfo/288>

PUBLICATION MISCONDUCT

<https://www.wjgnet.com/bpg/gerinfo/208>

ARTICLE PROCESSING CHARGE

<https://www.wjgnet.com/bpg/gerinfo/242>

STEPS FOR SUBMITTING MANUSCRIPTS

<https://www.wjgnet.com/bpg/GerInfo/239>

ONLINE SUBMISSION

<https://www.f6publishing.com>



Retrospective Study

Clinicopathological characteristics and surgical outcomes of sarcomatoid hepatocellular carcinoma

Jian-Ping Wang, Zhi-Gang Yao, Ya-Wen Sun, Xi-Han Liu, Feng-Kai Sun, Cun-Hu Lin, Fu-Xin Ren, Bei-Bei Lv, Shuai-Jun Zhang, Yang Wang, Fan-Ying Meng, Shun-Zhen Zheng, Wei Gong, Jun Liu

ORCID number: Jian-Ping Wang 0000-0001-9683-7689; Zhi-Gang Yao 0000-0002-8034-6524; Ya-Wen Sun 0000-0001-8789-8092; Xi-Han Liu 0000-0002-0061-8690; Feng-Kai Sun 0000-0003-1492-3474; Cun-Hu Lin 0000-0002-8795-2391; Fu-Xin Ren 0000-0001-8561-6549; Bei-Bei Lv 0000-0003-1972-7245; Shuai-Jun Zhang 0000-0001-6670-0761; Yang Wang 0000-0002-1872-8388; Fan-Ying Meng 0000-0002-7173-2714; Shun-Zhen Zheng 0000-0002-3028-3430; Wei Gong 0000-0001-5930-7160; Jun Liu 0000-0003-4707-7286.

Author contributions: Wang JP and Liu J designed the study; Yao ZG, Lin CH, Lv BB and Zhang SJ collected and analyzed the pathological data; Ren FX and Wang Y collected and analyzed the imaging data; Liu XH, Sun FK, Meng FY, Zheng SZ and Gong W collected and analyzed the clinical data; Sun YW performed statistical analyses; Wang JP drafted the manuscript; Liu J supervised the study and revised the manuscript.

Supported by Shandong Provincial Natural Science Foundation, China, No. ZR2014HP065 and No. ZR2017BH072; National Natural Science Foundation of China, No. 81373172 and No. 81770646; and Shandong Key R & D Program, No. 2015GGB14099 and No.

Jian-Ping Wang, Fan-Ying Meng, Shun-Zhen Zheng, Wei Gong, Jun Liu, Department of Liver Transplantation and Hepatobiliary Surgery, Shandong Provincial Hospital, Cheeloo College of Medicine, Shandong University, Jinan 250021, Shandong Province, China

Jian-Ping Wang, Fan-Ying Meng, Shun-Zhen Zheng, Wei Gong, Jun Liu, Department of Liver Transplantation and Hepatobiliary Surgery, Shandong Provincial Hospital Affiliated to Shandong First Medical University, Jinan 250021, Shandong Province, China

Zhi-Gang Yao, Cun-Hu Lin, Bei-Bei Lv, Shuai-Jun Zhang, Department of Pathology, Shandong Provincial Hospital Affiliated to Shandong First Medical University, Jinan 250021, Shandong Province, China

Ya-Wen Sun, Cancer Prevention and Control Research Office of Shandong Province, Shandong Cancer Hospital and Institute, Shandong First Medical University and Shandong Academy of Medical Sciences, Jinan 250117, Shandong Province, China

Xi-Han Liu, Cheeloo College of Medicine, Shandong University, Jinan 250012, Shandong Province, China

Feng-Kai Sun, Department of Gastroenterology, Shandong Provincial Hospital Affiliated to Shandong First Medical University, Jinan 250021, Shandong Province, China

Fu-Xin Ren, Shandong Medical Imaging Research Institute, Shandong University, Jinan 250021, Shandong Province, China

Yang Wang, Department of Radiology, Shandong Provincial Hospital Affiliated to Shandong First Medical University, Jinan 250021, Shandong Province, China

Corresponding author: Jun Liu, MD, PhD, Professor, Department of Liver Transplantation and Hepatobiliary Surgery, Shandong Provincial Hospital, Cheeloo College of Medicine, Shandong University, Shandong Provincial Hospital Affiliated to Shandong First Medical University, No. 324 Jingwu Road, Jinan 250021, Shandong Province, China. dr_liujun1967@126.com

Abstract

BACKGROUND

Hepatocellular carcinoma (HCC) is the sixth most common type of cancer and the fourth leading cause of cancer-related death worldwide. Sarcomatoid HCC, which

2017GSF218038.

Institutional review board

statement: This study was reviewed and approved by the Ethics Committee of Shandong Provincial Hospital.

Informed consent statement:

Patients were not required to give informed consent for this study because the analysis used anonymous clinical data that were obtained after each patient agreed to treatment by written consent.

Conflict-of-interest statement: The authors have no conflict-of interest to disclose.

Data sharing statement: No additional data are available.

Open-Access: This article is an open-access article that was selected by an in-house editor and fully peer-reviewed by external reviewers. It is distributed in accordance with the Creative Commons Attribution NonCommercial (CC BY-NC 4.0) license, which permits others to distribute, remix, adapt, build upon this work non-commercially, and license their derivative works on different terms, provided the original work is properly cited and the use is non-commercial. See: <http://creativecommons.org/licenses/by-nc/4.0/>

Manuscript source: Unsolicited manuscript

Received: March 11, 2020

Peer-review started: March 11, 2020

First decision: April 8, 2020

Revised: April 24, 2020

Accepted: July 14, 2020

Article in press: July 14, 2020

Published online: August 7, 2020

P-Reviewer: Rauchfuss F, Guerra DL

S-Editor: Wang JL

L-Editor: Filipodia

E-Editor: Ma YJ



contains poorly differentiated carcinomatous and sarcomatous components, is a rare histological subtype of HCC that differs from conventional HCC. It is highly aggressive and has a poor prognosis. Its clinicopathological characteristics, surgical outcomes and underlying mechanisms of its highly aggressive nature have not been fully elucidated.

AIM

To examine the clinicopathological characteristics and surgical outcomes of sarcomatoid HCC and explore the histogenesis of sarcomatoid HCC.

METHODS

In total, 196 patients [41 sarcomatoid HCC and 155 high-grade (Edmondson-Steiner grade III or IV) HCC] who underwent surgical resection between 2007 and 2017 were retrospectively reviewed. The characteristics and surgical outcomes of sarcomatoid HCC were compared with those of patients with high-grade HCC. The histological composition of invasive and metastatic sarcomatoid HCCs was evaluated.

RESULTS

Sarcomatoid HCC was more frequently diagnosed at an advanced stage with a larger tumor and higher rates of nonspecific symptom, adjacent organ invasion and lymph node metastasis than high-grade HCC (all $P < 0.05$). Compared with high-grade HCC patients, sarcomatoid HCC patients are less likely to have typical dynamic imaging features of HCC (44.4% *vs* 72.7%, $P = 0.001$) and elevated serum alpha-fetoprotein levels (> 20 ng/mL; 36.6% *vs* 78.7%, $P < 0.001$). The sarcomatoid group had a significantly shorter median recurrence-free survival (5.6 mo *vs* 16.4 mo, log-rank $P < 0.0001$) and overall survival (10.5 mo *vs* 48.1 mo, log-rank $P < 0.0001$) than the high-grade group. After controlling for confounding factors, the sarcomatoid subtype was identified as an independent predictor of poor prognosis. Pathological analyses indicated that invasive and metastatic lesions were mainly composed of carcinomatous components.

CONCLUSION

Sarcomatoid HCC was associated with a more advanced stage, atypical dynamic imaging, lower serum alpha-fetoprotein levels and a worse prognosis. The highly aggressive nature of sarcomatoid HCC is perhaps mediated by carcinomatous components.

Key words: Sarcomatoid hepatocellular carcinoma; Histological composition; Liver resection; Overall survival; Recurrence-free survival

©The Author(s) 2020. Published by Baishideng Publishing Group Inc. All rights reserved.

Core tip: Sarcomatoid hepatocellular carcinoma is a rare malignancy. Patients usually present with an advanced stage of the disease and have a poor prognosis. Histopathological examination plays an important role in diagnosis because serologic and radiologic examinations cannot help in distinguishing this disease from conventional hepatocellular carcinoma or other intrahepatic masses. Most patients have a history of chronic liver disease; thus, regular ultrasound screening of such patients can help detect tumors at an early stage and reduce the risk of death. Moreover, we discovered that carcinomatous components occupied the predominant proportion of invasions and metastases, and we developed a hypothesis regarding the occurrence of the disease.

Citation: Wang JP, Yao ZG, Sun YW, Liu XH, Sun FK, Lin CH, Ren FX, Lv BB, Zhang SJ, Wang Y, Meng FY, Zheng SZ, Gong W, Liu J. Clinicopathological characteristics and surgical outcomes of sarcomatoid hepatocellular carcinoma. *World J Gastroenterol* 2020; 26(29): 4327-4342

URL: <https://www.wjgnet.com/1007-9327/full/v26/i29/4327.htm>

DOI: <https://dx.doi.org/10.3748/wjg.v26.i29.4327>

INTRODUCTION

Hepatocellular carcinoma (HCC) is the sixth most common type of cancer and the fourth leading cause of cancer-related death worldwide^[1]. Sarcomatoid HCC is a histological subtype of HCC that differs from conventional HCC and presents with an unusual characteristic: sarcomatoid HCCs contain variable proportions of sarcomatous and carcinomatous components, wherein the sarcomatous component usually consists of spindle-shaped cells that form interlacing bundles and show a partial storiform pattern, and the carcinomatous component commonly comprises poorly differentiated [Edmondson-Steiner (ES) grade III or IV] conventional HCC cells^[2,3]. Previous studies have indicated that certain anticancer therapies, such as transcatheter arterial chemoembolization (TACE), can lead to more frequent sarcomatous changes in HCC^[4,5]. However, an increasing number of sarcomatoid HCC cases without previous anticancer therapy have been reported^[6-8]. To date, the pathogenesis of the sarcomatous change has not been elucidated.

Sarcomatoid HCC is a rare malignancy, with an incidence of 1.7%-1.9% among surgically resected HCC cases and 3.9%-9.4% among autopsied HCC patients^[3,4,8-11]. A few studies have reported that sarcomatoid HCC is associated with a higher recurrence rate, more frequent metastasis and poorer survival than conventional HCC^[2,3,8,12]. However, these studies did not further stratify conventional HCC into low- (ES grade I and II) and high-grade (ES grade III and IV) HCC; in particular, high-grade HCC is considered similar to sarcomatoid HCC in terms of histological differentiation, more aggressive nature and poor prognosis^[2,3,13,14]. In addition, although sarcomatoid HCC has a high incidence of adjacent organ invasion and metastasis^[8], the underlying mechanisms remain unknown. One previous study reported that most portal venous invasions and metastases had sarcomatous components, indicating that the sarcomatous component is responsible for metastasis^[3].

In this study, we comprehensively compared the clinicopathological characteristics and surgical outcomes of sarcomatoid HCC and high-grade HCC patients. We also analyzed the histological composition of metastatic and invasive sarcomatoid HCCs to study the relative importance of sarcomatous and carcinomatous components in highly aggressive behavior.

MATERIALS AND METHODS

Patient selection

From January 2007 to December 2017, a total of 2287 patients underwent surgical resection for HCC at Shandong Provincial Hospital. We retrospectively reviewed the pathological records of these patients, of which 186 were diagnosed with high-grade HCC defined as grade III or IV differentiated HCC according to the ES classification^[15]. In addition, 45 patients who underwent surgical resection for sarcomatoid HCC were identified from the pathology database of Shandong Provincial Hospital. We excluded patients who had previous interventions (including TACE, radiofrequency ablation and previous surgical resection) or missing data. A total of 41 sarcomatoid HCC and 155 high-grade HCC patients were included in the final analysis. The flowchart of patient selection is shown in [Figure 1](#).

Data collection

The medical records of the included patients were retrospectively reviewed. A standardized record form was used to collect clinical information, including age, sex, symptoms, alcoholism, hepatitis virus B or C infection, liver cirrhosis, laboratory test results, Child-Pugh classification and tumor-specific characteristics, such as tumor size, tumor number and macrovascular invasion. Tumor staging was classified according to the Barcelona Clinic Liver Cancer staging system and the American Joint Committee on Cancer (AJCC) staging system (8th edition, 2017). Computed tomography (CT) and magnetic resonance imaging (MRI) images were also reviewed.

Postoperative follow-up

Routine follow-ups were conducted during the 1st and 3rd mo after resection and subsequently every 2 to 3 mo during the first postoperative year and every 3 to 6 mo thereafter. At each follow-up, serum alpha-fetoprotein (AFP) levels and liver function were assessed, and abdominal ultrasonography was completed. An abdominal CT or MRI was performed at an interval of 6 to 12 mo depending on the postoperative time. If recurrence was suspected, an additional CT or MRI scan was performed.

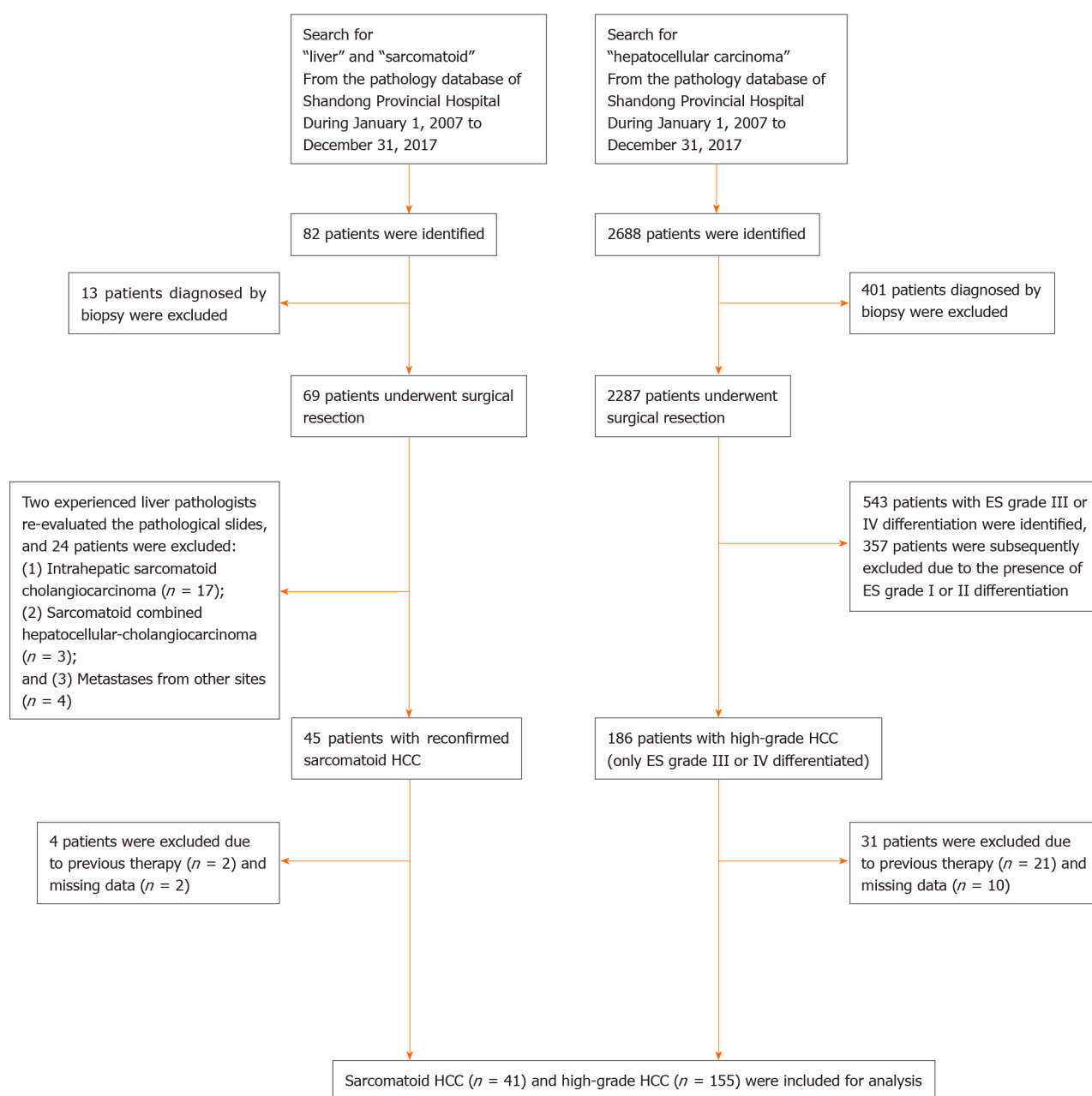


Figure 1 Flowchart of patient selection. ES: Edmondson-Steiner; HCC: Hepatocellular carcinoma.

immediately. Overall survival (OS) was defined as the time from the date of surgery to the date of death or last follow-up. Recurrence was defined as the appearance of a new lesion as confirmed by CT or MRI during follow-up. Recurrence-free survival (RFS) was calculated from the date of surgery to the date of the first documented recurrence, death or last follow-up.

Statistical analysis

Numerical data are presented as the median (range) or mean \pm standard deviation. Differences between groups were compared using Pearson's χ^2 test or the two-tailed Fisher's exact test for categorical data and the Mann-Whitney U test for numerical data. OS and RFS were determined using the Kaplan-Meier method, and differences between groups were assessed by the log-rank test. To evaluate further the impact of histological subtype on prognosis, univariate analyses of prognostic factors were performed using univariate Cox regression analysis. Among the parameters with $P < 0.1$ in the univariate analyses, age, serum AFP level, AJCC stage, differentiation grade of the carcinomatous component and histological subtype were used to build a basic

multivariate Cox proportional hazard model since they reflect multiple aspects of a patient's condition. We also adjusted for variables that changed the matched hazard ratio of the histological subtype by at least 5% upon addition into the model^[16]. A *P* value < 0.05 was considered to indicate statistical significance. Kaplan-Meier curves were generated and analyzed using GraphPad Prism 7 (GraphPad Software Inc., San Diego, CA, United States). All other statistical analyses were performed using IBM SPSS 23.0 software (SPSS Inc., Armonk, NY, United States).

RESULTS

Clinical and laboratory characteristics of the studied patients

A total of 196 patients, including 41 sarcomatoid and 155 high-grade HCC patients, were included in this study, and the clinical and laboratory characteristics are shown in [Table 1](#). In both the sarcomatoid and high-grade HCC groups, the majority of the patients were men (80.5% and 86.5%, *P* = 0.339), with a median age of 54 years and 55 years (*P* = 0.942), respectively. During the first hospital visit, sarcomatoid HCC patients had a higher incidence of concomitant symptoms than high-grade HCC patients (78.0% *vs* 55.5%, *P* = 0.009), including symptoms of epigastric discomfort (63.4% *vs* 43.2%), weight loss (34.1% *vs* 18.1%) and fever (22% *vs* 2.6%). The etiology of hepatopathy, presence of cirrhosis, Child-Pugh classification and laboratory test results were comparable between the two groups (all *P* > 0.05). However, serum AFP levels were significantly lower in the sarcomatoid group than in the high-grade group (5.8 ng/mL *vs* 348.0 ng/mL, *P* < 0.001).

Tumor-specific characteristics of the studied patients

The tumor-specific characteristics are shown in [Table 2](#). At the time of diagnosis, the frequency of sarcomatoid HCC patients presenting with typical dynamic image patterns (arterial phase enhancement and portal and delayed phase washout) was significantly lower than that of patients with high-grade HCC (44.4% *vs* 72.7%, *P* = 0.001). Some sarcomatoid HCCs might be misdiagnosed as intrahepatic cholangiocarcinoma (iCCA) or a hepatic abscess ([Figure 2](#)). Compared to high-grade HCC patients, sarcomatoid HCC patients had larger tumors, a lower incidence of tumor encapsulation and higher frequencies of tumor necrosis, adjacent organ invasion, lymph node metastasis and advanced AJCC stage (all *P* < 0.05). In addition, the two groups showed significant differences in the differentiation grades of carcinomatous components (*P* < 0.05). Patients in the sarcomatoid HCC group showed a trend towards a higher postoperative recurrence rate than those in the high-grade HCC group, but the difference was not significant (*P* = 0.091).

Sarcomatoid HCC patients have a worse prognosis than high-grade HCC patients

The sarcomatoid HCC patients had a shorter median OS than high-grade HCC patients (10.5 mo *vs* 48.1 mo, *P* < 0.0001, [Figure 3A](#)). The 1-, 3- and 5-year OS rates were 48.8%, 17.3% and 11.5% for the sarcomatoid group and 85.2%, 53.4% and 41.1% for the high-grade group, respectively. Moreover, the sarcomatoid HCC group had a shorter median RFS than the high-grade HCC group (5.6 mo *vs* 16.4 mo, *P* < 0.0001, [Figure 3B](#)). The RFS rates post resection were 49.7% and 83.1% at 6 mo, 20.9% and 60.2% at 1 year and 6.3% and 31.8% at 3 years for the sarcomatoid and high-grade groups, respectively. Even after stratification by AJCC stage ([Figure 4](#)) or differentiation grade of the carcinomatous component ([Figure 5](#)), the sarcomatoid HCC patients still had worse OS and shorter RFS than the high-grade HCC patients in each subgroup (all *P* < 0.05).

Sarcomatoid subtype is an independent predictor of poor prognosis

Cox regression analysis was used to verify whether the sarcomatoid type is an independent prognostic factor for HCC patients. Our univariate analysis showed that larger tumors, multiple tumors, a lack of tumor encapsulation, tumor necrosis, macro- and microvascular invasion, adjacent organ invasion, lymph node metastasis, advanced AJCC stage, poorer differentiation of the carcinomatous component and sarcomatoid subtype were significantly associated with increased mortality ([Table 3](#)) and recurrence ([Table 4](#)) in the total population (all *P* < 0.05). In addition, age < 55 years, Child-Pugh B and lower serum AFP levels were significantly related to increased mortality (all *P* < 0.05, [Table 3](#)). After controlling for confounding factors, sarcomatoid subtype was identified as an independent predictor of poorer OS and RFS

Table 1 Clinical and laboratory characteristics of the studied patients, *n* (%)

| Variables | Sarcomatoid HCC, <i>n</i> = 41 | High-grade HCC, <i>n</i> = 155 | <i>P</i> value |
|--|--------------------------------|--------------------------------|----------------|
| Age at diagnosis, median (range), yr | 54 (15-74) | 55 (28-81) | 0.942 |
| Sex (male/female) | 33/8 | 134/21 | 0.339 |
| Follow-up duration, median (range), mo | 10.5 (1.7-81.7) | 27.7 (2.1-138.5) | < 0.001 |
| Symptom at diagnosis | 32 (78.0) | 86 (55.5) | 0.009 |
| Alcoholism | 10 (24.4) | 38 (24.5) | 0.987 |
| HBsAg(+) | 29 (70.7) | 124 (80.0) | 0.202 |
| HCV-Ab(+) | 3 (7.3) | 5 (3.2) | 0.368 |
| Liver cirrhosis | 32 (78.0) | 133 (85.8) | 0.226 |
| Child-Pugh class, A/B | 36/5 | 143/12 | 0.359 |
| AFP, median (range), ng/mL | 5.8 (1.0-16660.0) | 348.0 (2.0-63208.5) | < 0.001 |
| AFP level | | | < 0.001 |
| ≤ 20 ng/mL | 26 (63.4) | 33 (21.3) | |
| > 20, < 400 ng/mL | 10 (24.4) | 47 (30.3) | |
| ≥ 400 ng/mL | 5 (12.2) | 75 (48.4) | |
| Creatinine, median (range), mg/dL | 0.77 (0.50-1.11) | 0.76 (0.49-1.58) | 0.475 |
| ALT, median (range), U/L | 26 (10-145) | 32 (8-301) | 0.204 |
| Total bilirubin, median (range), mg/dL | 0.85 (0.33-2.45) | 0.95 (0.33-10.29) | 0.095 |
| Albumin, mean ± SD, g/dL | 3.9 ± 0.5 | 4.0 ± 0.5 | 0.082 |
| INR, median (range) | 1.11 (0.96-1.53) | 1.08 (0.84-1.50) | 0.066 |

AFP: Alpha-fetoprotein; ALT: Alanine aminotransferase; HBsAg: Hepatitis B surface antigen; HCC: Hepatocellular carcinoma; HCV-Ab: Hepatitis C virus antibody; INR: International normalized ratio; SD: Standard deviation.

in the multivariable analysis (all *P* < 0.05, [Table 3](#) and [Table 4](#)).

Invasive and metastatic sarcomatoid HCCs mainly comprise carcinomatous components

Sarcomatoid HCC is composed of both sarcomatous and carcinomatous components ([Figure 6](#)); however, it remains unknown which component is the primary contributor to the highly aggressive nature of sarcomatoid HCC. To explore further this, the histological composition of lymph node metastases, macrovascular invasions, bile duct invasions and multiple liver tumor lesions of sarcomatoid HCCs were analyzed. Nine patients showed a total of 33 lymph node metastases. Of these, 26 (78.8%) metastases contained purely carcinomatous components, two (6.1%) were purely sarcomatous and five (15.1%) had mixed carcinomatous and sarcomatous components. Seven macrovascular invasions and two bile duct invasions were observed in eight patients (one patient had both macrovascular and bile duct invasion). Six of these invasions were evaluated by pathological examination, and only two (33.3%) had sarcomatous components. A total of 16 patients were confirmed to have multiple liver tumors (10 patients with multinodular HCC and six with satellite nodules). Of the 10 patients with multinodular HCC, only two (20.0%) had concurrent sarcomatoid HCC, whereas the others had simultaneous sarcomatoid and conventional HCC. In addition, of the six patients with satellite nodules, sarcomatous changes were found in only two patients (33.3%).

Proportion of sarcomatous components in sarcomatoid HCC does not predict survival

Next, we divided the sarcomatoid HCC patients into three subgroups according to the proportion of sarcomatous components in the tumor: (1) Mixed subgroup ≤ 50% (*n* = 14 patients); (2) Mixed subgroup > 50% (*n* = 16); and (3) Pure subgroup (*n* = 11). The OS and RFS were similar among these subgroups ([Figure 7](#)).

Table 2 Tumor-specific characteristics of the studied patients, *n* (%)

| Variables | Sarcomatoid HCC, <i>n</i> = 41 | High-grade HCC, <i>n</i> = 155 | <i>P</i> value |
|--|--------------------------------|--------------------------------|----------------|
| Tumor size, median (range), cm | 8.6 (1.5-24.0) | 5.5 (1.3-19.0) | 0.007 |
| Tumor number, single/multiple | 25/16 | 108/47 | 0.443 |
| Tumor location | | | 0.549 |
| Left lobe | 11 (26.8) | 34 (21.9) | |
| Right lobe | 28 (68.3) | 106 (68.4) | |
| Both lobes | 2 (4.9) | 15 (9.7) | |
| Tumor encapsulation | 11 (26.8) | 77 (49.7) | 0.009 |
| Tumor necrosis | 35 (85.4) | 53 (34.2) | < 0.001 |
| Spontaneous rupture | 4 (9.8) | 9 (5.8) | 0.477 |
| Adjacent organ invasion | 9 (22.0) | 13 (8.4) | 0.024 |
| Satellite nodules | 6 (14.6) | 25 (16.1) | 0.816 |
| Macrovascular invasion | 7 (17.1) | 34 (21.9) | 0.496 |
| Microvascular invasion | 16 (39.0) | 63 (40.6) | 0.851 |
| Lymph node metastasis | 9 (22.0) | 9 (5.8) | 0.004 |
| Differentiation grade of the carcinomatous component | | | < 0.001 |
| II | 3 (7.3) | 0 (0) | |
| III | 19 (46.4) | 116 (74.8) | |
| IV | 8 (19.5) | 39 (25.2) | |
| NA ¹ | 11 (26.8) | 0 (0) | |
| AJCC stage | | | 0.006 |
| Stage I | 10 (24.4) | 68 (43.9) | |
| Stage II | 7 (17.0) | 25 (16.1) | |
| Stage III | 15 (36.6) | 53 (34.2) | |
| Stage IV | 9 (22.0) | 9 (5.8) | |
| BCLC stage | | | 0.543 |
| 0 | 0 (0) | 2 (1.3) | |
| A | 19 (46.4) | 95 (61.3) | |
| B | 6 (14.6) | 15 (9.7) | |
| C | 16 (39.0) | 43 (27.7) | |
| Recurrence | 34 (82.9) | 108 (69.7) | 0.091 |
| Recurrence pattern | 34 | 108 | 0.246 |
| Intrahepatic | 14 (41.2) | 62 (57.4) | |
| Extrahepatic | 8 (23.5) | 17 (15.7) | |
| Both | 12 (35.3) | 29 (26.9) | |
| Imaging data at diagnosis | 36 | 139 | |
| Typical dynamic image patterns ² | 16 (44.4) | 101 (72.7) | 0.001 |

¹The tumor consists purely of sarcomatous components.²Arterial phase enhancement, portal and delayed phase washout. AJCC: American Joint Committee on Cancer; BCLC: Barcelona Clinic Liver Cancer; HCC: Hepatocellular carcinoma; NA: Not available.

Table 3 Univariable and multivariable analyses of overall survival of the studied patients

| Variables | HR (95%CI) | P value | HR (95%CI) | P value |
|--|---------------------|----------------------------|-----------------------|----------------------------|
| Age, ≥ 55 yr <i>vs</i> < 55 yr | 0.687 (0.477-0.991) | 0.044 | 0.977 (0.654-1.460) | 0.910 |
| Sex, male <i>vs</i> female | 0.972 (0.579-1.630) | 0.913 | | |
| Hepatitis virus infection, yes <i>vs</i> no | 1.140 (0.718-1.811) | 0.579 | | |
| Alcoholism, yes <i>vs</i> no | 1.101 (0.723-1.677) | 0.653 | | |
| Liver cirrhosis, yes <i>vs</i> no | 1.027 (0.620-1.703) | 0.917 | | |
| Child-Pugh, B <i>vs</i> A | 2.287 (1.281-4.083) | 0.005 | Excluded ¹ | Excluded |
| AFP, > 20 ng/mL <i>vs</i> ≤ 20 ng/mL | 0.560 (0.386-0.813) | 0.002 | 0.555 (0.377-0.817) | 0.003 |
| Tumor size, > 5 cm <i>vs</i> ≤ 5 cm | 2.718 (1.806-4.089) | < 0.001 | 1.871 (1.146-3.054) | 0.012 |
| Tumor number, multiple <i>vs</i> single | 1.647 (1.129-2.402) | 0.010 | Excluded | Excluded |
| Tumor encapsulation, yes <i>vs</i> no | 0.443 (0.302-0.651) | < 0.001 | Excluded | Excluded |
| Tumor necrosis, yes <i>vs</i> no | 2.237 (1.548-3.233) | < 0.001 | 0.973 (0.622-1.523) | 0.904 |
| Macrovascular invasion, yes <i>vs</i> no | 3.403 (2.256-5.133) | < 0.001 | 2.308 (1.438-3.702) | 0.001 |
| Microvascular invasion, yes <i>vs</i> no | 1.615 (1.115-2.338) | 0.011 | Excluded | Excluded |
| Adjacent organ invasion, yes <i>vs</i> no | 2.329 (1.407-3.857) | 0.001 | Excluded | Excluded |
| Lymph node metastasis, yes <i>vs</i> no | 2.413 (1.371-4.249) | 0.002 | Excluded | Excluded |
| AJCC stage, III + IV <i>vs</i> I + II | 3.221 (2.200-4.715) | < 0.001 | 1.763 (1.085-2.864) | 0.022 |
| Histological subtype, sHCC <i>vs</i> hgHCC | 3.460 (2.283-5.243) | < 0.001 | 3.140 (2.032-4.851) | < 0.001 |
| Differentiation grade of carcinomatous component | | $P_{\text{trend}} < 0.001$ | | $P_{\text{trend}} = 0.421$ |
| NA ² | 1 (reference) | | 1 (reference) | |
| II | 0.383 (0.083-1.758) | 0.217 | 0.297 (0.062-1.422) | 0.129 |
| III | 0.226 (0.115-0.444) | < 0.001 | 0.644 (0.281-1.475) | 0.298 |
| IV | 0.327 (0.159-0.670) | 0.002 | 0.739 (0.311-1.755) | 0.494 |

¹Because of changing the matched hazard ratio of histological subtype less than 5%.

²The tumor consists purely of sarcomatous components. AFP: Alpha-fetoprotein; AJCC: American Joint Committee on Cancer; CI: Confidence interval; hgHCC: High-grade hepatocellular carcinoma; HR: Hazard ratio; NA: Not available; sHCC: Sarcomatoid hepatocellular carcinoma.

DISCUSSION

Sarcomatoid HCC is a rare histological subtype of HCC, with an incidence of approximately 2% of surgically resected cases^[3,8]. A few studies have reported that sarcomatoid HCC is more aggressive than conventional HCC and associated with a worse prognosis^[2,3,8,12]. However, sarcomatoid HCC usually has a worse differentiation grade^[12], which is regarded as a prognostic factor for HCC, and this fact can lead to inaccurate comparisons between sarcomatoid HCC and conventional HCC. In this study, high-grade HCC, which is thought to be similar to sarcomatoid HCC in terms of histological differentiation, was used as the control in a detailed examination of the clinicopathological characteristics and surgical outcomes of sarcomatoid HCC. Moreover, this study analyzed the histological composition of metastatic and invasive sarcomatoid HCCs.

Our results demonstrate that sarcomatoid HCC is more frequently diagnosed at an advanced AJCC stage with relatively larger tumors and higher rates of adjacent organ invasion and lymph node metastasis. During the first visit to the hospital, sarcomatoid HCC patients have a higher incidence of epigastric discomfort, weight loss and fever than high-grade HCC patients. In particular, the incidence of fever was nearly 10 times higher in the sarcomatoid HCC group than in the high-grade HCC group, perhaps due to the higher frequency of tumor necrosis caused by the relatively larger size and faster progression of sarcomatoid HCC tumors. Imaging plays a critical role in HCC diagnosis. There are typical dynamic image patterns considered specific for HCC^[17]. However, more than 60% of sarcomatoid HCCs show MRI features more similar to

Table 4 Univariable and multivariable analyses of recurrence-free survival of the studied patients

| Variables | HR (95% CI) | P value | HR (95% CI) | P value |
|--|---------------------|----------------------------|-----------------------|----------------------------|
| Age, ≥ 55 yr <i>vs</i> < 55 yr | 0.743 (0.533-1.035) | 0.079 | 0.857 (0.605-1.214) | 0.386 |
| Sex, male <i>vs</i> female | 0.771 (0.493-1.206) | 0.254 | | |
| Hepatitis virus infection, yes <i>vs</i> no | 1.369 (0.879-2.133) | 0.165 | | |
| Alcoholism, yes <i>vs</i> no | 0.940 (0.634-1.394) | 0.759 | | |
| Liver cirrhosis, yes <i>vs</i> no | 1.283 (0.790-2.084) | 0.314 | | |
| Child-Pugh, B <i>vs</i> A | 1.699 (0.938-3.078) | 0.081 | Excluded ¹ | Excluded |
| AFP, > 20 ng/mL <i>vs</i> ≤ 20 ng/mL | 0.710 (0.501-1.006) | 0.054 | 0.680 (0.469-0.986) | 0.042 |
| Tumor size, > 5 cm <i>vs</i> ≤ 5 cm | 2.398 (1.685-3.413) | < 0.001 | 1.680 (0.469-0.986) | 0.015 |
| Tumor number, multiple <i>vs</i> single | 2.058 (1.460-2.902) | < 0.001 | 1.210 (0.824-1.777) | 0.331 |
| Tumor encapsulation, yes <i>vs</i> no | 0.561 (0.400-0.786) | 0.001 | Excluded | Excluded |
| Tumor necrosis, yes <i>vs</i> no | 1.726 (1.239-2.404) | 0.001 | Excluded | Excluded |
| Macrovascular invasion, yes <i>vs</i> no | 2.922 (1.961-4.354) | < 0.001 | Excluded | Excluded |
| Microvascular invasion, yes <i>vs</i> no | 1.646 (1.178-2.300) | 0.003 | Excluded | Excluded |
| Adjacent organ invasion, yes <i>vs</i> no | 2.329 (1.445-3.753) | 0.001 | Excluded | Excluded |
| Lymph node metastasis, yes <i>vs</i> no | 2.327 (1.356-3.992) | 0.002 | Excluded | Excluded |
| AJCC stage, III + IV <i>vs</i> I + II | 3.416 (2.420-4.821) | < 0.001 | 2.752 (1.879-4.032) | < 0.001 |
| Histological subtype, sHCC <i>vs</i> hgHCC | 2.842 (1.913-4.222) | < 0.001 | 2.355 (1.564-3.546) | < 0.001 |
| Differentiation grade of carcinomatous component | | $P_{\text{trend}} = 0.036$ | | $P_{\text{trend}} = 0.194$ |
| NA ² | 1 (reference) | | 1 (reference) | |
| II | 1.001 (0.264-3.790) | 0.999 | 0.650 (0.162-2.603) | 0.543 |
| III | 0.445 (0.215-0.922) | 0.029 | 1.605 (0.672-3.832) | 0.287 |
| IV | 0.642 (0.298-1.380) | 0.256 | 2.025 (0.822-4.988) | 0.125 |

¹Because of changing the matched hazard ratio of histological subtype less than 5%.

²The tumor consists purely of sarcomatous components. AFP: Alpha-fetoprotein; AJCC: American Joint Committee on Cancer; CI: Confidence interval; hgHCC: High-grade hepatocellular carcinoma; HR: hazard ratio; NA: Not available; sHCC: Sarcomatoid hepatocellular carcinoma.

iCCA than to HCC^[18]. In our study, only 44.4% of sarcomatoid HCC patients presented with typical dynamic image patterns of HCC, and some patients with sarcomatoid HCC may be misdiagnosed with iCCA or a hepatic abscess. Consistent with the results of previous studies^[8,12], our findings show that the majority of patients with sarcomatoid HCC had a history of chronic viral hepatitis and liver cirrhosis, which are key risk factors for the development of HCC^[19]. Regular ultrasound screening of these high-risk patients could help detect tumors at an early stage and reduce the risk of death^[19,20]. Of note, only 36.6% of sarcomatoid HCC patients had serum AFP levels > 20 ng/mL in the current study. Therefore, serum AFP tests may have no use for the early detection of sarcomatoid HCC. Moreover, both serologic and radiologic examinations could not help in distinguishing the sarcomatoid subtype from conventional HCC or other intrahepatic masses, and this might be problematic when selecting a potential recipient of liver transplantation because the sarcomatoid subtype usually predicts a poor prognosis^[2].

Previous studies have demonstrated that patients with resected sarcomatoid HCC have a worse RFS than those with resected conventional HCC^[2,8]. Similar to the findings of previous studies, we found that the median RFS of sarcomatoid HCC patients was significantly shorter than that of high-grade HCC patients (5.6 mo *vs* 16.4 mo, $P < 0.0001$). A previous study from Taiwan indicated that sarcomatoid HCC is more prone to extrahepatic metastasis than conventional HCC after curative therapy^[12]. Nevertheless, in our study, there was no difference in the recurrence pattern between the sarcomatoid and high-grade HCC groups, perhaps due to their similar histological differentiation. Several previous studies have also indicated that

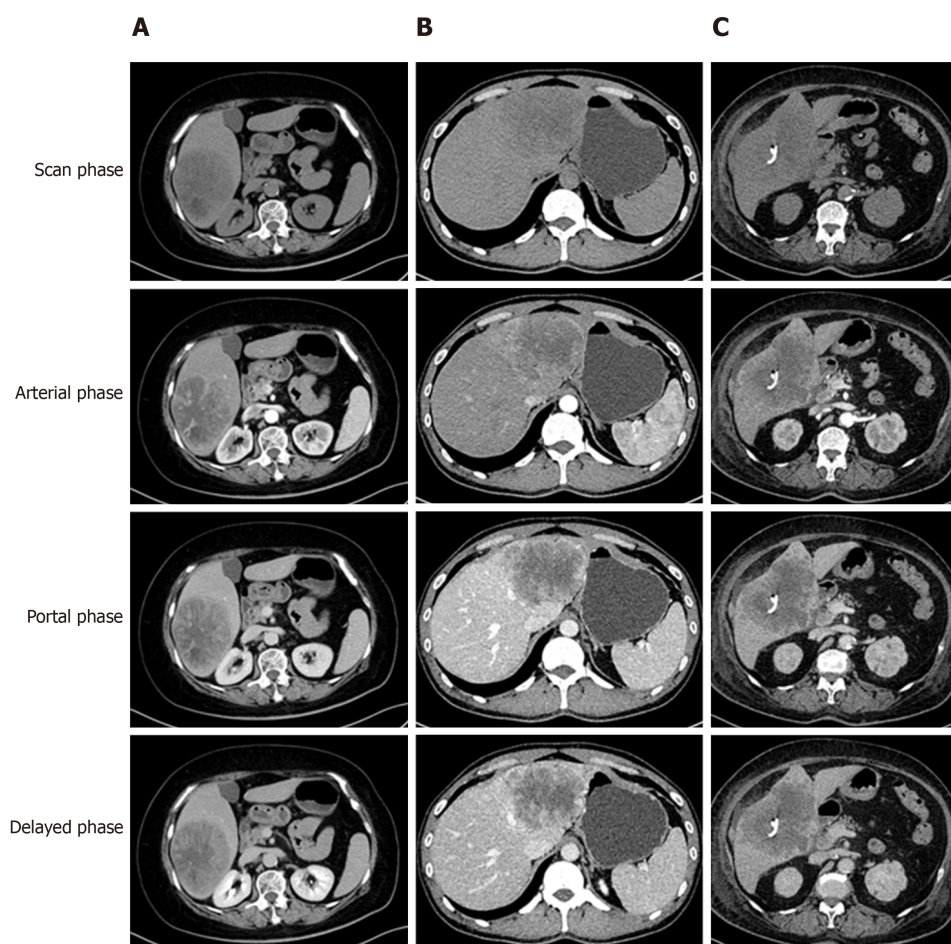


Figure 2 Imaging findings of sarcomatoid hepatocellular carcinoma in patients with various initial diagnoses based on radiologic findings. A: Hepatocellular carcinoma; B: Intrahepatic cholangiocarcinoma; C: Hepatic abscess.

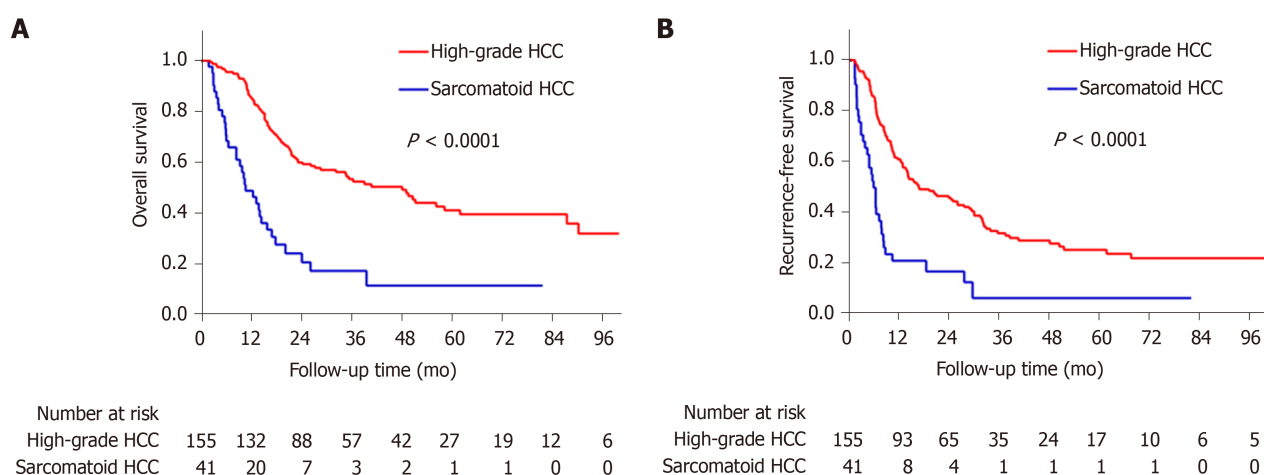


Figure 3 Kaplan-Meier estimated overall and recurrence-free survival curves. A: Sarcomatoid hepatocellular carcinoma (HCC) is associated with worse overall survival (log-rank $P < 0.0001$); B: Sarcomatoid HCC is associated with worse recurrence-free survival (log-rank $P < 0.0001$).

the OS of sarcomatoid HCC patients is significantly worse than that of conventional HCC patients, with a 3-year OS rate ranging from 8.0% to 17.5%^[2,8,12,21]. Consistent with previous studies, the current study showed that patients with resected sarcomatoid HCC had an elevated risk of death, with an abysmal 3-year OS compared with the prognosis of resected high-grade HCC patients (17.3% *vs* 53.4%, $P < 0.0001$). Even after controlling for confounding factors, the association between sarcomatoid HCC and worse RFS and OS persisted. These results strongly suggest that sarcomatoid HCC is

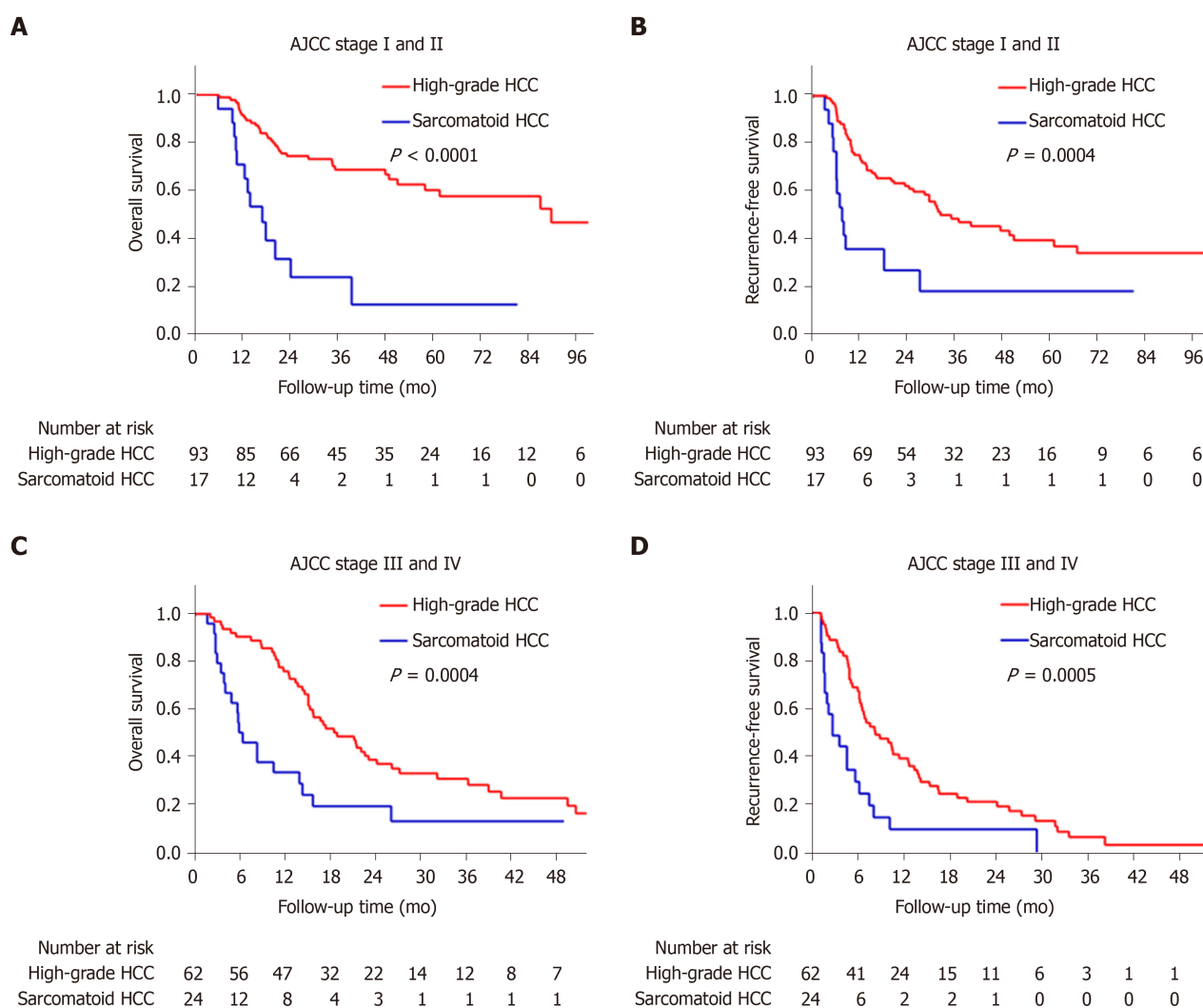


Figure 4 Kaplan-Meier curves of the estimated overall survival and recurrence-free survival of patients with sarcomatoid or high-grade hepatocellular carcinoma stratified by American Joint Committee on Cancer stage. A: Sarcomatoid hepatocellular carcinoma (HCC) is associated with worse overall survival (OS) in patients with American Joint Committee on Cancer (AJCC) stage I-II disease (log-rank $P < 0.0001$); B: Sarcomatoid HCC is associated with worse recurrence-free survival (RFS) in patients with AJCC stage I-II disease (log-rank $P = 0.0004$); C: Sarcomatoid HCC is associated with worse OS in patients with AJCC stage III-IV disease (log-rank $P = 0.0004$); D: Sarcomatoid HCC is associated with worse RFS in patients with AJCC stage III-IV disease (log-rank $P = 0.0004$).

more aggressive than high-grade HCC, although they are similar in terms of histological differentiation.

The histogenesis of sarcomatous tissue in cancers, including HCC, has not yet been elucidated. The most widely accepted theory is the conversion theory, which postulates that the sarcomatous element derives from the carcinoma during tumor evolution^[3,9,22-25]. Several recent studies indicate that epithelial-mesenchymal transition is an important mechanism underlying the sarcomatous change, which further confirms the conversion theory^[26-28]. Sarcomatoid HCCs comprise variable proportions of sarcomatous and carcinomatous components. A previous study reported no survival difference between mixed and pure sarcomatoid HCC patients^[12]. However, the proportion of sarcomatous tissue in some patients could not be precisely evaluated because of pathological diagnosis by biopsy^[12]. In our study, all patients with sarcomatoid HCC underwent surgical resection and were divided into three subgroups according to the proportion of the sarcomatous component. Our results indicated that the OS and RFS were similar among the three subgroups, suggesting that the proportion of the sarcomatoid component is not associated with prognosis.

Several previous studies demonstrated that sarcomatoid HCC is associated with a high frequency of portal venous invasion and metastasis^[3,11,29,30]; our study showed a higher rate of lymph node metastasis but not of venous invasion. However, few studies have explored the related mechanisms, and only Maeda *et al*^[3] have reported the composition of portal venous invasions and metastases. They studied 13 cases of

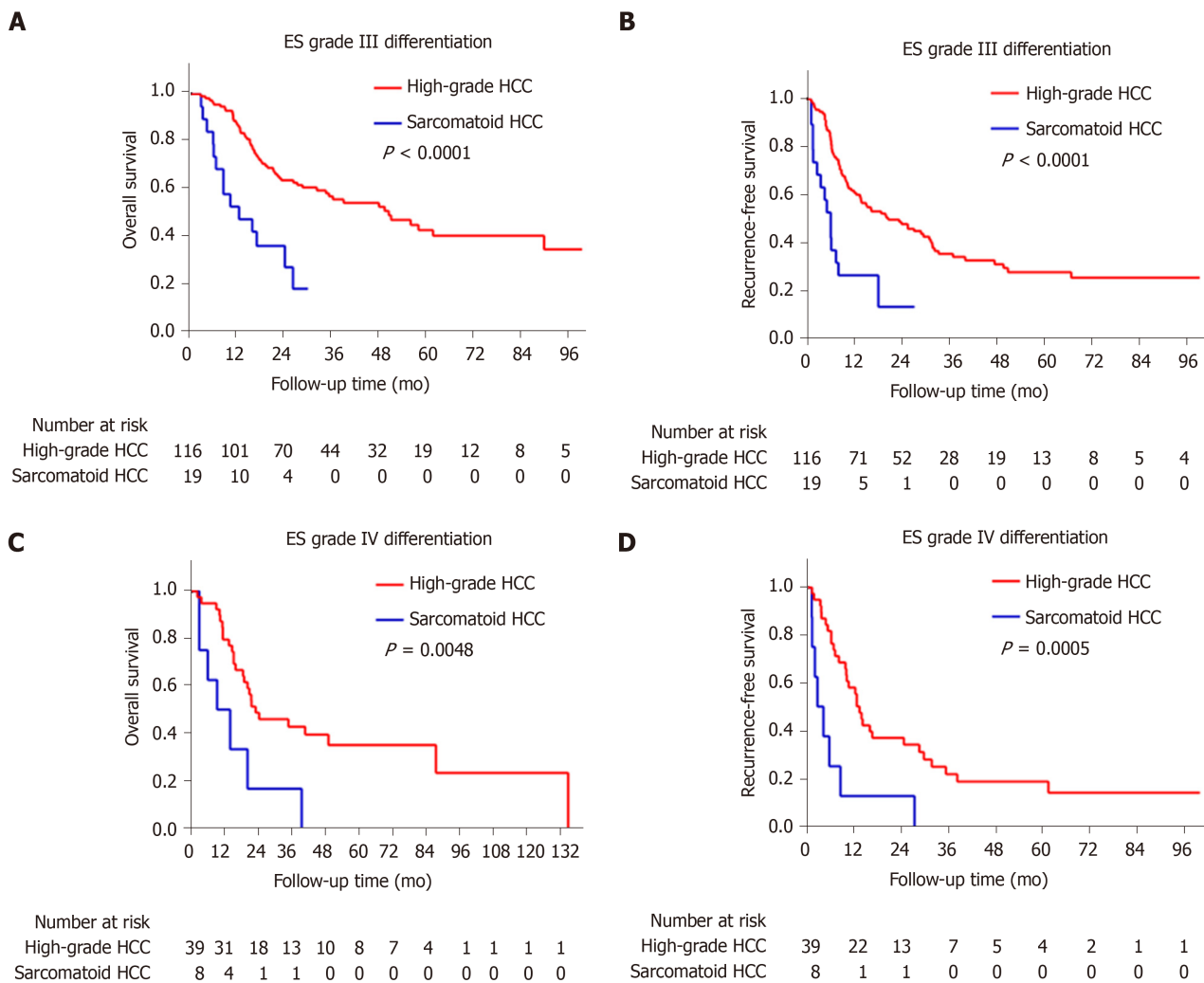


Figure 5 Kaplan-Meier curves of the estimated overall survival and recurrence-free survival of patients with sarcomatoid or high-grade hepatocellular carcinoma stratified by differentiation grade of the carcinomatous component. A: Sarcomatoid hepatocellular carcinoma (HCC) is associated with worse overall survival (OS) in patients with Edmondson-Steiner (ES) grade III differentiation (log-rank $P < 0.0001$); B: Sarcomatoid HCC is associated with worse recurrence-free survival (RFS) in patients with ES grade III differentiation (log-rank $P < 0.0001$); C: Sarcomatoid HCC is associated with worse OS in patients with ES grade IV differentiation (log-rank $P = 0.0048$); D: Sarcomatoid HCC is associated with worse RFS in patients with ES grade IV differentiation (log-rank $P = 0.0005$).

sarcomatoid HCC treated by surgical resection and found that most portal venous invasions and metastases had sarcomatous components, which were postulated to be responsible for metastasis. Contrary to their results, our study demonstrated that the majority of lymph node metastases, macrovascular/bile duct invasions and satellite nodules were composed of carcinomatous components. This apparent inconsistency may be because in Maeda's study, five (38%) patients underwent preoperative treatment, such as TACE, and their analysis included an autopsied case with extensive postoperative metastases comprising sarcomatoid components^[3]. In line with our findings, however, they showed that the metastatic lymph nodes in two patients comprised carcinomatous components. In addition, some invasions and metastases had mixed carcinomatous and sarcomatous components. Based on these findings, we speculate that the carcinomatous component might be the dominant factor mediating the highly aggressive nature of sarcomatoid HCC. Furthermore, the carcinomatous components might exist in a "presarcomatoid" state^[31], in which the tumor cells have cellular morphology typical of conventional HCC but greatly enhanced invasive ability. As a result, sarcomatous changes might occur after invasion or metastasis in some cases (Figure 8). This could also explain the phenomenon of sarcomatoid HCC being associated with more frequent lymph node metastasis and poorer prognosis than high-grade HCC even when they are similar in terms of histological differentiation. Further studies focusing on the underlying molecular pathogenesis of sarcomatoid HCC are urgently needed to understand better its highly aggressive

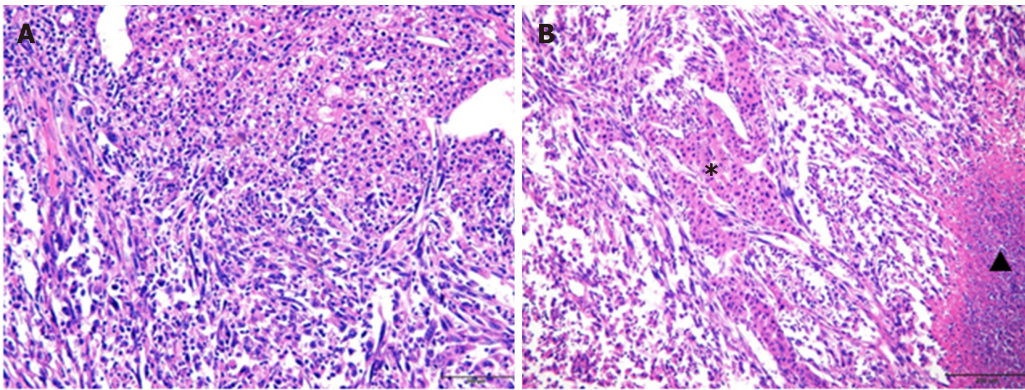


Figure 6 Pathological findings of sarcomatoid hepatocellular carcinoma. A: The lower left area of the image shows the sarcomatous change, with spindle-shaped cells forming interlacing bundles. The upper right region represents conventional hepatocellular carcinoma, with tumor cells at Edmondson-Steiner (ES) grade II differentiation (hematoxylin & eosin staining, $\times 200$ magnification). (B) Scattered patchy carcinomatous components with ES grade III differentiation in sarcomatous regions (Hematoxylin and eosin staining, $\times 100$ magnification). Star: Carcinomatous components, Triangle: Tumor necrosis.

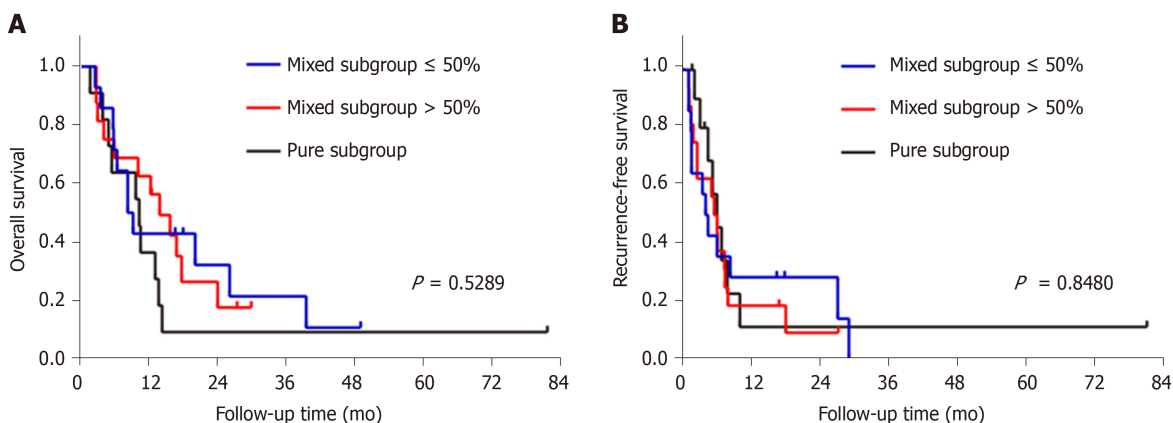


Figure 7 Kaplan-Meier curves of the estimated overall survival and recurrence-free survival of patients with sarcomatoid hepatocellular carcinoma stratified by the proportion of the sarcomatous component in the tumor. Sarcomatoid hepatocellular carcinoma patients were divided into three subgroups based on the proportion of the sarcomatous component in the tumor: (1) mixed subgroup $\leq 50\%$ ($n = 14$); (2) mixed subgroup $> 50\%$ ($n = 16$); and (3) pure subgroup ($n = 11$). Kaplan-Meier analyses of (A) overall survival and (B) recurrence-free survival showed no differences among the three subgroups.

biological features.

There are limitations of our study. First, this was a retrospective study conducted in a single center, and randomized studies should be performed in multiple centers. Second, although this study presented an analysis of one of the largest series of sarcomatoid HCC cases, the relatively small number of patients may have influenced the accuracy of the results, and additional studies with more cases should be performed. Third, in this study, we discovered that carcinomatous components occupied the predominant proportion of invasions and metastases and developed a hypothesis regarding the occurrence of sarcomatoid HCC. The related mechanisms were not further explored, and future studies should address these issues.

In conclusion, compared with high-grade HCC, sarcomatoid HCC is associated with more advanced AJCC stage, an atypical dynamic image pattern and lower serum AFP levels. Patients with sarcomatoid HCC have significantly worse RFS and OS than those with high-grade HCC. Furthermore, the highly aggressive nature of sarcomatoid HCC seems to be mediated by its carcinomatous components.

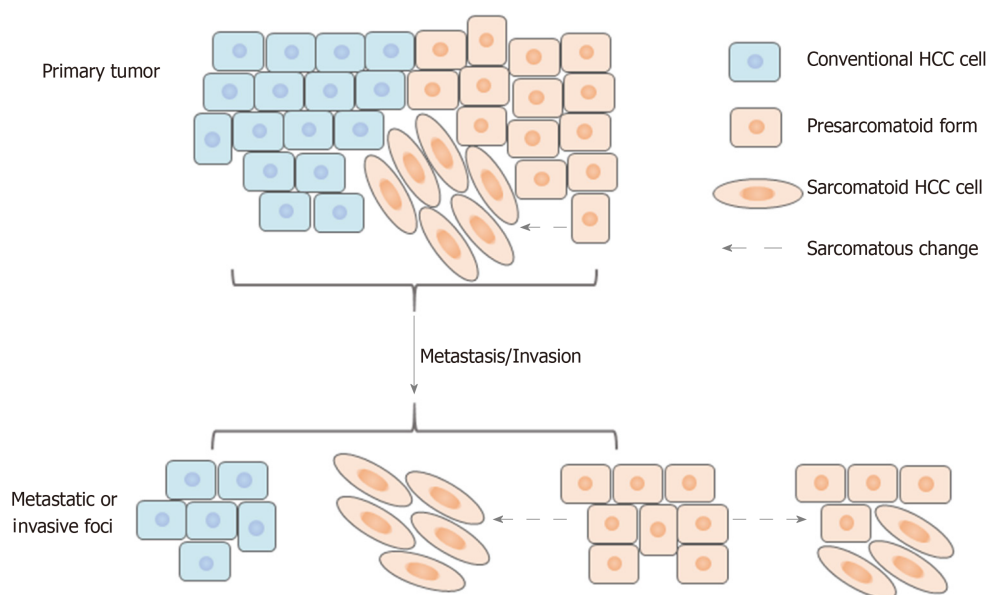


Figure 8 Schematic of the hypothesis. HCC: Hepatocellular carcinoma.

ARTICLE HIGHLIGHTS

Research background

Hepatocellular carcinoma (HCC) is the sixth most common type of cancer and the fourth leading cause of cancer-related death worldwide. Sarcomatoid HCC, which contains poorly differentiated carcinomatous and sarcomatous components, is a rare histological subtype of HCC that differs from conventional HCC. It is highly aggressive and has a poor prognosis. Its clinicopathological characteristics, surgical outcomes and underlying mechanisms of its highly aggressive nature have not been fully elucidated.

Research motivation

A few studies have reported that sarcomatoid HCC is associated with a higher recurrence rate, more frequent metastasis and poorer survival than conventional HCC. However, these studies did not further stratify conventional HCC into low-[Edmondson-Steiner (ES) grade I and II] and high-grade (ES grade III and IV) HCC; in particular, high-grade HCC is considered similar to sarcomatoid HCC in terms of histological differentiation, more aggressive nature and poor prognosis. In addition, although sarcomatoid HCC has a high incidence of adjacent organ invasion and metastasis, the underlying mechanisms remain unknown. One previous study reported that most portal venous invasions and metastases had sarcomatous components, indicating that the sarcomatous component is responsible for metastasis. However, in the study, five (38%) patients underwent preoperative treatment, such as TACE, and their analysis included an autopsied case with extensive postoperative metastases comprising sarcomatoid components. Therefore, the results might be biased. In view of the deficiencies of previous studies, we will conduct further studies on sarcomatoid HCC.

Research objectives

To examine the clinicopathological characteristics and surgical outcomes of sarcomatoid HCC and explore the histogenesis of sarcomatoid HCC.

Research methods

In total, 196 patients [41 sarcomatoid HCC and 155 high-grade (ES grade III or IV) HCC] who underwent surgical resection between 2007 and 2017 were retrospectively reviewed. The characteristics and surgical outcomes of sarcomatoid HCC were compared with those of patients with high-grade HCC. The histological composition of invasive and metastatic sarcomatoid HCCs was evaluated.

Research results

Sarcomatoid HCC was more frequently diagnosed at an advanced stage with a larger tumor and higher rates of nonspecific symptom, adjacent organ invasion and lymph node metastasis than high-grade HCC (all $P < 0.05$). Compared with high-grade HCC patients, sarcomatoid HCC patients are less likely to have typical dynamic imaging features of HCC (44.4% *vs* 72.7%, $P = 0.001$) and elevated serum alpha-fetoprotein levels (> 20 ng/mL; 36.6% *vs* 78.7%, $P < 0.001$). The sarcomatoid group had a significantly shorter median recurrence-free survival (5.6 mo *vs* 16.4 mo, log-rank $P < 0.0001$) and overall survival (10.5 mo *vs* 48.1 mo, log-rank $P < 0.0001$) than the high-grade group. After controlling for confounding factors, the sarcomatoid subtype was identified as an independent predictor of poor prognosis. Pathological analyses indicated that invasive and metastatic lesions were mainly composed of carcinomatous components.

Research conclusions

Sarcomatoid HCC was associated with a more advanced stage, atypical dynamic imaging, lower serum alpha-fetoprotein levels and a worse prognosis. The highly aggressive nature of sarcomatoid HCC is perhaps mediated by carcinomatous components.

Research perspectives

Studies focusing on the underlying molecular pathogenesis of sarcomatoid HCC are urgently needed to understand better its highly aggressive biological features.

REFERENCES

- Bray F, Ferlay J, Soerjomataram I, Siegel RL, Torre LA, Jemal A. Global cancer statistics 2018: GLOBOCAN estimates of incidence and mortality worldwide for 36 cancers in 185 countries. *CA Cancer J Clin* 2018; **68**: 394-424 [PMID: 30207593 DOI: 10.3322/caac.21492]
- Hwang S, Lee SG, Lee YJ, Ahn CS, Kim KH, Park KM, Moon KM, Moon DB, Ha TY, Yu ES, Choi GW. Prognostic impact of sarcomatous change of hepatocellular carcinoma in patients undergoing liver resection and liver transplantation. *J Gastrointest Surg* 2008; **12**: 718-724 [PMID: 17999122 DOI: 10.1007/s11605-007-0393-7]
- Maeda T, Adachi E, Kajiyama K, Takenaka K, Sugimachi K, Tsuneyoshi M. Spindle cell hepatocellular carcinoma. A clinicopathologic and immunohistochemical analysis of 15 cases. *Cancer* 1996; **77**: 51-57 [PMID: 8630939 DOI: 10.1002/(SICI)1097-0142(19960101)77:1<51::AID-CNCR10>3.0.CO;2-7]
- Kojiro M, Sugihara S, Kakizoe S, Nakashima O, Kiyomatsu K. Hepatocellular carcinoma with sarcomatous change: a special reference to the relationship with anticancer therapy. *Cancer Chemother Pharmacol* 1989; **23** Suppl: S4-S8 [PMID: 2466583 DOI: 10.1007/bf00647229]
- Koda M, Maeda Y, Matsunaga Y, Mimura K, Murawaki Y, Horie Y. Hepatocellular carcinoma with sarcomatous change arising after radiofrequency ablation for well-differentiated hepatocellular carcinoma. *Hepatol Res* 2003; **27**: 163-167 [PMID: 14563432 DOI: 10.1016/s1386-6346(03)00207-9]
- Lu J, Zhang J, Xiong XZ, Li FY, Ye H, Cheng Y, Zhou RX, Lin YX, Cheng NS. Primary hepatic sarcomatoid carcinoma: clinical features and prognosis of 28 resected cases. *J Cancer Res Clin Oncol* 2014; **140**: 1027-1035 [PMID: 24647927 DOI: 10.1007/s00432-014-1641-3]
- Yu Y, Zhong Y, Wang J, Wu D. Sarcomatoid hepatocellular carcinoma (SHC): a case report. *World J Surg Oncol* 2017; **15**: 219 [PMID: 29233162 DOI: 10.1186/s12957-017-1286-1]
- Lu J, Xiong XZ, Li FY, Ye H, Lin YX, Zhou RX, Cai YL, Jin YW, Cheng NS. Prognostic Significance of Sarcomatous Change in Patients with Hepatocellular Carcinoma After Surgical Resection. *Ann Surg Oncol* 2015; **22** Suppl 3: S1048-S1056 [PMID: 26286198 DOI: 10.1245/s10434-015-4818-3]
- Kakizoe S, Kojiro M, Nakashima T. Hepatocellular carcinoma with sarcomatous change. Clinicopathologic and immunohistochemical studies of 14 autopsy cases. *Cancer* 1987; **59**: 310-316 [PMID: 2433017 DOI: 10.1002/1097-0142(19870115)59:2<310::aid-cnrcr2820590224>3.0.co;2-s]
- Yamaguchi R, Nakashima O, Yano H, Kutami R, Kusaba A, Kojiro M. Hepatocellular carcinoma with sarcomatous change. *Oncol Rep* 1997; **4**: 525-529 [PMID: 21590091 DOI: 10.3892/or.4.3.525]
- Watanabe J, Nakashima O, Kojiro M. Clinicopathologic study on lymph node metastasis of hepatocellular carcinoma: a retrospective study of 660 consecutive autopsy cases. *Jpn J Clin Oncol* 1994; **24**: 37-41 [PMID: 8126919]
- Liao SH, Su TH, Jeng YM, Liang PC, Chen DS, Chen CH, Kao JH. Clinical Manifestations and Outcomes of Patients with Sarcomatoid Hepatocellular Carcinoma. *Hepatology* 2019; **69**: 209-221 [PMID: 30014620 DOI: 10.1002/hep.30162]
- Han DH, Choi GH, Kim KS, Choi JS, Park YN, Kim SU, Park JY, Ahn SH, Han KH. Prognostic significance of the worst grade in hepatocellular carcinoma with heterogeneous histologic grades of differentiation. *J Gastroenterol Hepatol* 2013; **28**: 1384-1390 [PMID: 23517197 DOI: 10.1111/jgh.12200]
- Martins-Filho SN, Paiva C, Azevedo RS, Alves VAF. Histological Grading of Hepatocellular Carcinoma-A Systematic Review of Literature. *Front Med (Lausanne)* 2017; **4**: 193 [PMID: 29209611 DOI: 10.3389/fmed.2017.00193]
- EDMONDSON HA, STEINER PE. Primary carcinoma of the liver: a study of 100 cases among 48,900 necropsies. *Cancer* 1954; **7**: 462-503 [PMID: 13160935 DOI: 10.1007/bf00647229]

- 10.1002/1097-0142(195405)7:3<462::aid-cnrcr2820070308>3.0.co;2-e]
- 16 **Kernan WN**, Viscoli CM, Brass LM, Broderick JP, Brott T, Feldmann E, Morgenstern LB, Wilterdink JL, Horwitz RI. Phenylpropanolamine and the risk of hemorrhagic stroke. *N Engl J Med* 2000; **343**: 1826-1832 [PMID: 11117973 DOI: 10.1056/NEJM200012213432501]
 - 17 **de Lope CR**, Tremosini S, Forner A, Reig M, Bruix J. Management of HCC. *J Hepatol* 2012; **56** Suppl 1: S75-S87 [PMID: 22300468 DOI: 10.1016/S0168-8278(12)60009-9]
 - 18 **Seo N**, Kim MJ, Rhee H. Hepatic sarcomatoid carcinoma: magnetic resonance imaging evaluation by using the liver imaging reporting and data system. *Eur Radiol* 2019; **29**: 3761-3771 [PMID: 30859282 DOI: 10.1007/s00330-019-06052-8]
 - 19 **Heimbach JK**, Kulik LM, Finn RS, Sirlin CB, Abecassis MM, Roberts LR, Zhu AX, Murad MH, Marrero JA. AASLD guidelines for the treatment of hepatocellular carcinoma. *Hepatology* 2018; **67**: 358-380 [PMID: 28130846 DOI: 10.1002/hep.29086]
 - 20 **Choi DT**, Kum HC, Park S, Ohsfeldt RL, Shen Y, Parikh ND, Singal AG. Hepatocellular Carcinoma Screening Is Associated With Increased Survival of Patients With Cirrhosis. *Clin Gastroenterol Hepatol* 2019; **17**: 976-987.e4 [PMID: 30616961 DOI: 10.1016/j.cgh.2018.10.031]
 - 21 **Wu L**, Tsilimigras DI, Farooq A, Hyer JM, Merath K, Paredes AZ, Mehta R, Sahara K, Shen F, Pawlik TM. Management and outcomes among patients with sarcomatoid hepatocellular carcinoma: A population-based analysis. *Cancer* 2019; **125**: 3767-3775 [PMID: 31299092 DOI: 10.1002/cnrcr.32396]
 - 22 **Shin P**, Ohmi S, Sakurai M. Hepatocellular carcinoma combined with hepatic sarcoma. *Acta Pathol Jpn* 1981; **31**: 815-824 [PMID: 6272542 DOI: 10.1111/j.1440-1827.1981.tb02806.x]
 - 23 **McCluggage WG**. Malignant biphasic uterine tumours: carcinosarcomas or metaplastic carcinomas? *J Clin Pathol* 2002; **55**: 321-325 [PMID: 11986333 DOI: 10.1136/jcp.55.5.321]
 - 24 **Lester TR**, Hunt KK, Nayeemuddin KM, Bassett RL Jr, Gonzalez-Angulo AM, Feig BW, Huo L, Rourke LL, Davis WG, Valero V, Gilcrease MZ. Metaplastic sarcomatoid carcinoma of the breast appears more aggressive than other triple receptor-negative breast cancers. *Breast Cancer Res Treat* 2012; **131**: 41-48 [PMID: 21331622 DOI: 10.1007/s10549-011-1393-6]
 - 25 **Kim DK**, Kim BR, Jeong JS, Baek YH. Analysis of intrahepatic sarcomatoid cholangiocarcinoma: Experience from 11 cases within 17 years. *World J Gastroenterol* 2019; **25**: 608-621 [PMID: 30774275 DOI: 10.3748/wjg.v25.i5.608]
 - 26 **Kim HM**, Kim H, Park YN. Sarcomatoid cholangiocarcinoma with osteoclast-like giant cells associated with hepatolithiasis: A case report. *Clin Mol Hepatol* 2015; **21**: 309-313 [PMID: 26523274 DOI: 10.3350/cmh.2015.21.3.309]
 - 27 **Sung CO**, Choi H, Lee KW, Kim SH. Sarcomatoid carcinoma represents a complete phenotype with various pathways of epithelial mesenchymal transition. *J Clin Pathol* 2013; **66**: 601-606 [PMID: 23533257 DOI: 10.1136/jclinpath-2012-201271]
 - 28 **Yen CH**, Lai CC, Liao CC, Wang SF, Liao YJ, Tung CY, Hung JH, Huang SF, Chen YA. Characterization of a new murine cell line of sarcomatoid hepatocellular carcinoma and its application for biomarker/therapy development. *Sci Rep* 2017; **7**: 3052 [PMID: 28596515 DOI: 10.1038/s41598-017-03164-3]
 - 29 **Eriguchi N**, Aoyagi S, Okuda K, Hara M, Fukuda S, Tamae T, Ohdo M, Kanazawa N, Kawabata M, Kodama T, Nishimura K, Hamada S. Unusual liver carcinomas with sarcomatous features: analysis of four cases. *Surg Today* 2001; **31**: 530-533 [PMID: 11428608 DOI: 10.1007/s005950170116]
 - 30 **Honda H**, Hayashi T, Yoshida K, Takenaka K, Kaneko K, Fukuya T, Tateshi Y, Ro T, Maeda T, Masuda K. Hepatocellular carcinoma with sarcomatous change: characteristic findings of two-phased incremental CT. *Abdom Imaging* 1996; **21**: 37-40 [PMID: 8672970 DOI: 10.1007/s002619900006]
 - 31 **Kuroda N**, Tamura M, Hes O, Michal M, Shuin T, Toi M, Hayashi Y, Lee GH. Chromophobe renal cell carcinoma with prominent lymph node metastasis and polysomy of chromosome 21: poorly differentiated form or "presarcomatoid" form? *Med Mol Morphol* 2011; **44**: 168-173 [PMID: 21922389 DOI: 10.1007/s00795-009-0467-6]



Published by **Baishideng Publishing Group Inc**
7041 Koll Center Parkway, Suite 160, Pleasanton, CA 94566, USA

Telephone: +1-925-3991568

E-mail: bpgoffice@wjgnet.com

Help Desk: <https://www.f6publishing.com/helpdesk>

<https://www.wjgnet.com>

