

World Journal of *Gastroenterology*

World J Gastroenterol 2020 November 14; 26(42): 6514-6705



EDITORIAL

- 6514** Nonalcoholic fatty liver disease in lean subjects: Prognosis, outcomes and management
Chrysavgis L, Ztriva E, Protopapas A, Tziomalos K, Cholongitas E

REVIEW

- 6529** Simultaneous colorectal and parenchymal-sparing liver resection for advanced colorectal carcinoma with synchronous liver metastases: Between conventional and mini-invasive approaches
De Raffele E, Mirarchi M, Cuicchi D, Lecce F, Casadei R, Ricci C, Selva S, Minni F
- 6556** What could microRNA expression tell us more about colorectal serrated pathway carcinogenesis?
Peruhova M, Peshevska-Sekulovska M, Krastev B, Panayotova G, Georgieva V, Konakchieva R, Nikolaev G, Velikova TV

MINIREVIEWS

- 6572** Modern surgical strategies for perianal Crohn's disease
Zabot GP, Cassol O, Saad-Hossne R, Bemelman W
- 6582** Vascular anomalies associated with hepatic shunting
Schmalz MJ, Radhakrishnan K

ORIGINAL ARTICLE

Basic Study

- 6599** Reactive oxygen species-induced activation of Yes-associated protein-1 through the c-Myc pathway is a therapeutic target in hepatocellular carcinoma
Cho Y, Park MJ, Kim K, Kim SW, Kim W, Oh S, Lee JH
- 6614** Fedora-type magnetic compression anastomosis device for intestinal anastomosis
Chen H, Ma T, Wang Y, Zhu HY, Feng Z, Wu RQ, Lv Y, Dong DH

Retrospective Cohort Study

- 6626** Attention deficit hyperactivity disorder and gastrointestinal morbidity in a large cohort of young adults
Kedem S, Yust-Katz S, Carter D, Levi Z, Kedem R, Dickstein A, Daher S, Katz LH
- 6638** Nomograms and risk score models for predicting survival in rectal cancer patients with neoadjuvant therapy
Wei FZ, Mei SW, Chen JN, Wang ZJ, Shen HY, Li J, Zhao FQ, Liu Z, Liu Q

Observational Study

- 6658** Estimation of visceral fat is useful for the diagnosis of significant fibrosis in patients with non-alcoholic fatty liver disease

Hernández-Conde M, Llop E, Fernández Carrillo C, Tormo B, Abad J, Rodríguez L, Perelló C, López Gomez M, Martínez-Porras JL, Fernández Puga N, Trapero-Marugán M, Fraga E, Ferre Aracil C, Calleja Panero JL

Prospective Study

- 6669** Accuracy of carbon dioxide insufflation for endoscopic retrograde cholangiopancreatography using double-balloon endoscopy

Niwa Y, Nakamura M, Kawashima H, Yamamura T, Maeda K, Sawada T, Mizutani Y, Ishikawa E, Ishikawa T, Kakushima N, Furukawa K, Ohno E, Honda T, Ishigami M, Fujishiro M

SYSTEMATIC REVIEWS

- 6679** Prognostic role of artificial intelligence among patients with hepatocellular cancer: A systematic review

Lai Q, Spoletini G, Mennini G, Larghi Laureiro Z, Tsilimigras DI, Pawlik TM, Rossi M

CASE REPORT

- 6689** Case series of three patients with hereditary diffuse gastric cancer in a single family: Three case reports and review of literature

Hirakawa M, Takada K, Sato M, Fujita C, Hayasaka N, Nobuoka T, Sugita S, Ishikawa A, Mizukami M, Ohnuma H, Murase K, Miyanishi K, Kobune M, Takemasa I, Hasegawa T, Sakurai A, Kato J

- 6698** Intussusception due to hematogenous metastasis of hepatocellular carcinoma to the small intestine: A case report

Mashiko T, Masuoka Y, Nakano A, Tsuruya K, Hirose S, Hirabayashi K, Kagawa T, Nakagohri T

ABOUT COVER

Editorial Board Member of *World Journal of Gastroenterology*, Dr. Misha Luyer is a Senior Consultant for upper gastrointestinal and pancreas surgery and Chair of the Department of Surgery. After finishing his surgical training in 2010, he started as a Fellow at the Catharina Hospital in Eindhoven (Netherlands), where he received specialized training in upper gastrointestinal, bariatric and pancreatic surgery. In 2012, he was appointed consultant at the Catharina Hospital. Since then, he has been involved in national training courses for minimally invasive upper gastrointestinal surgery and pancreatic surgery. He has authored more than 150 articles published in peer-reviewed scientific journals and book chapters in the fields of upper gastroenterology and pancreas. He currently serves on the Editorial Board of several peer-reviewed scientific journals. (L-Editor: Filipodia)

AIMS AND SCOPE

The primary aim of *World Journal of Gastroenterology* (WJG, *World J Gastroenterol*) is to provide scholars and readers from various fields of gastroenterology and hepatology with a platform to publish high-quality basic and clinical research articles and communicate their research findings online. WJG mainly publishes articles reporting research results and findings obtained in the field of gastroenterology and hepatology and covering a wide range of topics including gastroenterology, hepatology, gastrointestinal endoscopy, gastrointestinal surgery, gastrointestinal oncology, and pediatric gastroenterology.

INDEXING/ABSTRACTING

The WJG is now indexed in Current Contents®/Clinical Medicine, Science Citation Index Expanded (also known as SciSearch®), Journal Citation Reports®, Index Medicus, MEDLINE, PubMed, PubMed Central, and Scopus. The 2020 edition of Journal Citation Report® cites the 2019 impact factor (IF) for WJG as 3.665; IF without journal self cites: 3.534; 5-year IF: 4.048; Ranking: 35 among 88 journals in gastroenterology and hepatology; and Quartile category: Q2.

RESPONSIBLE EDITORS FOR THIS ISSUE

Production Editor: Ji-Hong Liu; Production Department Director: Yun-Xiao Jian Wu; Editorial Office Director: Ze-Mao Gong.

NAME OF JOURNAL

World Journal of Gastroenterology

ISSN

ISSN 1007-9327 (print) ISSN 2219-2840 (online)

LAUNCH DATE

October 1, 1995

FREQUENCY

Weekly

EDITORS-IN-CHIEF

Andrzej S Tarnawski, Subrata Ghosh

EDITORIAL BOARD MEMBERS

<http://www.wjgnet.com/1007-9327/editorialboard.htm>

PUBLICATION DATE

November 14, 2020

COPYRIGHT

© 2020 Baishideng Publishing Group Inc

INSTRUCTIONS TO AUTHORS

<https://www.wjgnet.com/bpg/gerinfo/204>

GUIDELINES FOR ETHICS DOCUMENTS

<https://www.wjgnet.com/bpg/GerInfo/287>

GUIDELINES FOR NON-NATIVE SPEAKERS OF ENGLISH

<https://www.wjgnet.com/bpg/gerinfo/240>

PUBLICATION ETHICS

<https://www.wjgnet.com/bpg/GerInfo/288>

PUBLICATION MISCONDUCT

<https://www.wjgnet.com/bpg/gerinfo/208>

ARTICLE PROCESSING CHARGE

<https://www.wjgnet.com/bpg/gerinfo/242>

STEPS FOR SUBMITTING MANUSCRIPTS

<https://www.wjgnet.com/bpg/GerInfo/239>

ONLINE SUBMISSION

<https://www.f6publishing.com>



Vascular anomalies associated with hepatic shunting

Michael J Schmalz, Kadakkal Radhakrishnan

ORCID number: Michael J Schmalz 0000-0001-8608-5006; Kadakkal Radhakrishnan 0000-0002-9111-8316.

Author contributions: Schmalz MJ and Radhakrishnan K contributed equally to this work, both authors have read and approved the final manuscript.

Conflict-of-interest statement: The authors have no conflicts of interest with regards the topic of this review.

Open-Access: This article is an open-access article that was selected by an in-house editor and fully peer-reviewed by external reviewers. It is distributed in accordance with the Creative Commons Attribution NonCommercial (CC BY-NC 4.0) license, which permits others to distribute, remix, adapt, build upon this work non-commercially, and license their derivative works on different terms, provided the original work is properly cited and the use is non-commercial. See: <http://creativecommons.org/licenses/by-nc/4.0/>

Manuscript source: Invited manuscript

Specialty type: Gastroenterology and hepatology

Country/Territory of origin: United States

Peer-review report's scientific

Michael J Schmalz, Department of Pediatric Gastroenterology, Cleveland Clinic, Cleveland, OH 44106, United States

Kadakkal Radhakrishnan, Department of Pediatric Gastroenterology, Children's Hospital, Cleveland Clinic, Cleveland, OH 44106, United States

Corresponding author: Michael J Schmalz, MD, Academic Fellow, Department of Pediatric Gastroenterology, Cleveland Clinic, 8950 Euclid Ave, Cleveland, OH 44106, United States. michaeljschmalz@gmail.com

Abstract

Congenital vascular anomalies affecting the liver have been described in the scientific literature for decades. Understanding these malformations begins with knowledge of hepatic vascular embryology. Surgeons have applied numerous classification systems to describe both intrahepatic and extrahepatic shunts, which can confuse the reader and clinician. In our experience, focusing on one classification system for extrahepatic shunts and one for intrahepatic shunts is better. Today many patients with these shunts carry good long-term prognosis thanks to advances in imaging to better detect shunts earlier and classify them. Timely intervention by skilled radiologists and surgeons have also limited complications arising from dynamic shunts and can avoid a liver transplant. Congenital hepatic shunts are not the only vascular condition affecting the liver. Hereditary hemorrhagic telangiectasia, also known as Osler Weber Rendu syndrome, particularly type 2, may have varying severity of hepatic involvement which warrants longitudinal care from an experienced hepatologist. Lastly, congenital hemangiomas, often first identified on the skin and oral mucosa, also can affect the liver. While most will resolve in infancy and childhood, the pediatric hepatologist must understand how and when to treat persistent lesions and their complications. This article serves as a concise reference to help clinicians better care for patients with these rare conditions.

Key Words: Hepatic; Shunt; Pediatric; Hemangioma; Congenital; Vascular

©The Author(s) 2020. Published by Baishideng Publishing Group Inc. All rights reserved.

Core Tip: Hepatic shunts present from birth, hepatic hemangiomas, and hereditary hemorrhagic telangiectasia have all been described in the scientific literature over the

quality classification

Grade A (Excellent): 0
 Grade B (Very good): B, B
 Grade C (Good): 0
 Grade D (Fair): 0
 Grade E (Poor): 0

Received: August 12, 2020

Peer-review started: August 12, 2020

First decision: September 30, 2020

Revised: October 14, 2020

Accepted: October 27, 2020

Article in press: October 27, 2020

Published online: November 14, 2020

P-Reviewer: Katada K

S-Editor: Huang P

L-Editor: A

P-Editor: Wang LL



decades. Most reviews were written by radiologists or surgeons, but none have adequately covered all these topics from the gastroenterologist's perspective. Our review serves as a reference for most congenital vascular anomalies that present in the liver. Our goal is to provide knowledge to help clinicians understand the burden of disease of these conditions and guide management decisions.

Citation: Schmalz MJ, Radhakrishnan K. Vascular anomalies associated with hepatic shunting. *World J Gastroenterol* 2020; 26(42): 6582-6598

URL: <https://www.wjgnet.com/1007-9327/full/v26/i42/6582.htm>

DOI: <https://dx.doi.org/10.3748/wjg.v26.i42.6582>

INTRODUCTION

Congenital hepatoportal shunts (CHS) are rare but represent a unique entity and prognosis for pediatric patients. This review is an effort to succinctly describe various vascular anomalies and conditions associated with hepatic shunts including congenital hepatic shunts, hereditary hemorrhagic telangiectasia (HHT), and hepatic hemangiomas. We will also discuss various treatment considerations for such diseases and long-term prognosis.

EMBRYOLOGY

When discussing vascular abnormalities, it is important to first understand the origins of the normal hepatic vasculature. Embryological development of the liver occurs between the fourth and tenth weeks of life. Hepatic tissue originates from endoderm foregut tissue. This tissue undergoes specification after exposure to fibroblast growth factor and bone morphogenic protein, followed by morphogenesis into a liver bud. This process is orchestrated by multiple complex signaling molecules including Hex and GATA6^[1].

The afferent and efferent hepatic venous vasculature develops from a complex evolution of the cardinal veins, vitelline veins, and the umbilical veins. The right and left cardinal veins run vertically through the developing fetus. Both veins have cranial and caudal segments that interface at a confluence beneath the developing right atrium and on top of the primordial liver called the sinus venosus (Figure 1A). The sinus venosus also receives blood from the terminal ends of the umbilical veins and incorporates an anastomosis between the two vessels. This confluence of vessels along with drainage from developing hepatic veins will eventually develop into the inferior vena cava by the eighth week of gestation^[1].

The right and left vitelline veins and their bridging anastomoses originate on the anterior surface of the yolk sac and surround the primitive foregut at four weeks gestation. The vasculature is symmetric at this stage and structured like rungs on a ladder. By the tenth week of gestation, the inferior segments of the right vitelline vein and superior portions of the left vitelline vein regress leaving an S-shaped dominant vessel that carries blood from the maturing intestines into the liver: The main portal vein (Figure 1B). Within the liver, this venous web eventually organizes to form the right and left hepatic veins. The left portal vein typically arises from one of the vitelline anastomoses.

The umbilical veins also transform from the symmetric right and left vessels which flow into the sinus venosus and directly into the liver to a single left vessel which ends in the liver parenchyma. In utero, this vessel supplies oxygenated, nutrient-rich blood to the body and forms a main intrahepatic bypass vessel through to the systemic venous drainage called the ductus venosus (DV). Approximately 40%-50% of the blood from the umbilical veins flows through the DV and onto systemic circulation. The remaining blood flow is distributed through the liver sinusoids. After birth, umbilical venous blood flow is disrupted when the umbilical cord is cut. The umbilical vein normally becomes the ligamentum teres and the DV regresses into the ligamentum venosum. This process occurs within minutes after birth but can take up to three weeks to complete.

The fully developed portal vein supplies 75% of the blood flow into the liver. It

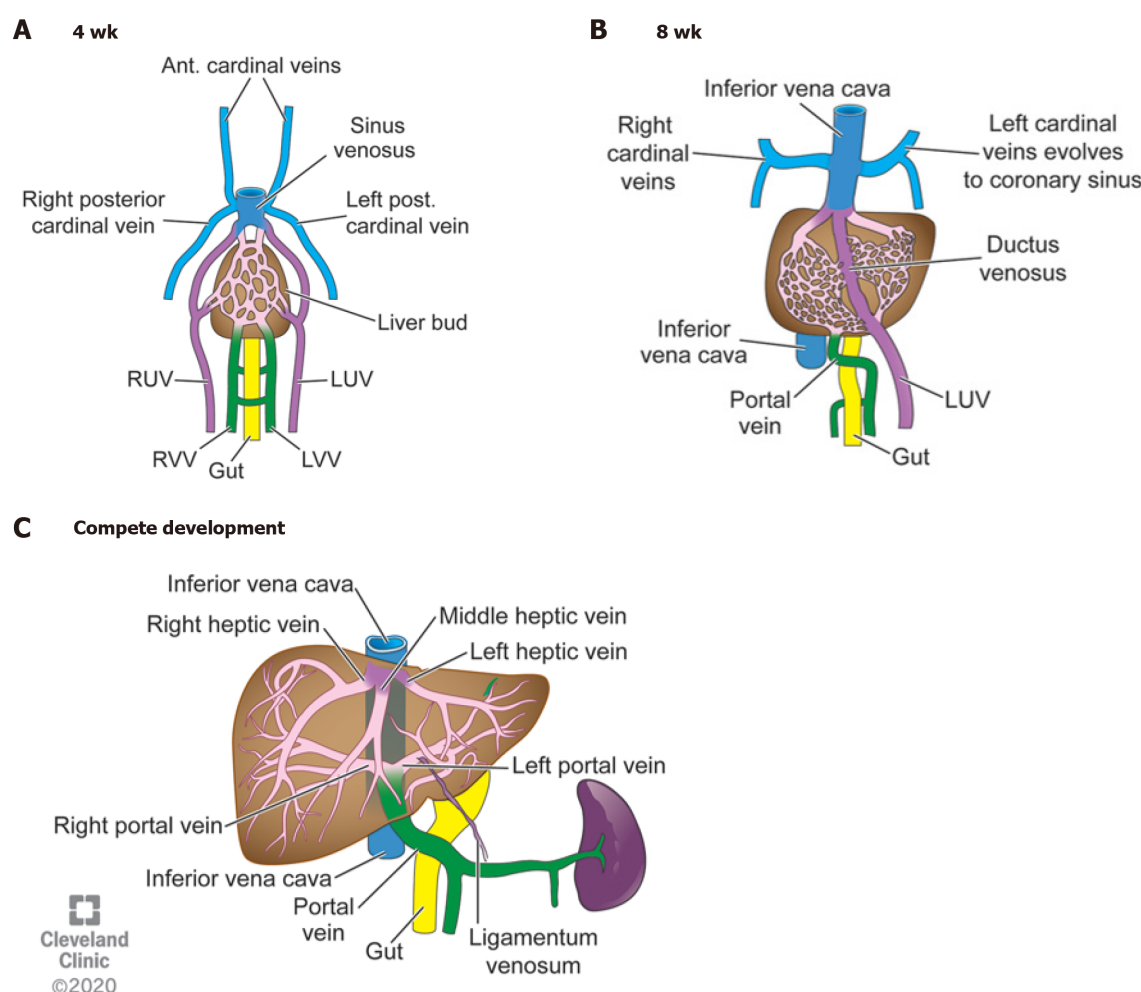


Figure 1 Four weeks gestation, eight weeks gestation, and the mature liver vasculature after birth. A: Right and left umbilical, cardinal, and vitelline veins making up the primitive vasculature to the developing liver bud. Cardinal and umbilical veins converge on top of the liver to form the sinus venosus. The vitelline veins return blood from the developing gut; B: Posterior cardinal veins coalesce to form the upper part of the inferior vena cava. The right umbilical vein involutes and left umbilical vein makes up the ductus venosus (DV). The intrahepatic vessels start to form mature hepatic veins. The vitelline veins start to mature into the portal venous system; C: The DV collapses at birth after the umbilical cord is cut and becomes the ligamentum venosum. The portal veins and hepatic veins are mature. RUV: Right umbilical vein; LUV: Left umbilical vein; RVV: Right vitelline vein; LVV: Left vitelline vein; IVC: Inferior vena cava. Reprinted with permission, Cleveland Clinic Center for Medical Art & Photography ©2020. All rights reserved.

receives blood directly from the spleen, gallbladder, pancreas, and entire gastrointestinal tract, aside from the rectum, *via* the connecting superior and inferior mesenteric veins. The splenic vein typically flows into the superior mesenteric vein (SMV). Once in the liver, the portal vein normally divides into a left and right portal vein. The right portal vein further divides into an anterior and posterior branch (Figure 1C).

The complexity of hepatic vasculature development leads to several opportunities for abnormalities, namely from the failed closure of embryologic vessels. Other abnormalities arise from the proliferation of end vessels. This article will further review the formation, presentation, and therapeutic considerations of each of these congenital abnormalities.

CONGENITAL HEPATIC SHUNTS

A vascular shunt is any connection or orientation of blood vessels that bypass its intended organ. Congenital hepatic shunts usually present early in life either through incidental findings on imaging, on workup for liver injury secondary to the shunt itself, or work up for other causes of systemic disease either secondary to the shunt or associated with shunts. They are thought to arise from the persistence of the vitelline venous system in relation to the developing hepatic sinusoids. The incidence is

roughly 1:30000-1:50000 live births. Several classification systems exist; however, the practicality of such systems has led to much debate because: (1) Anatomical characteristics can be complex; and (2) It may not make a difference clinically or with regards to management. There are two broad categories of congenital shunts: Extrahepatic where portal blood flows bypass the liver and connect to the systemic circulation, or intrahepatic where blood flow through the liver connects to the systemic circulation before it is filtered by the hepatocytes. Intrahepatic and extrahepatic shunts may overlap within the same patient. For simplification, we will only discuss two classification systems that cover most extrahepatic and intrahepatic shunts.

Congenital extrahepatic porto-systemic shunts

Congenital extrahepatic porto-systemic shunts (CEPSS), are best classified using Morgan and Superina's^[2] system developed in 1994 which divides these shunts into complete or partial hepatic diversion (Figure 2 and Table 1). CEPSS Type I is eponymously named Abernethy's malformation, in honor of Dr. John Abernethy who first described the malformation in 1793^[3]. In Abernethy's malformation blood flow from the portal system bypasses the liver entirely and empties directly into the systemic venous circulation *via* an end-to-side anastomosis with the inferior vena cava. The portal system within the liver is, as best as can be identified, non-existent. While the pathophysiology is not completely understood, early involution of the peri duodenal vitelline plexus is the proposed mechanism for Abernethy's malformation^[4]. Diagnosis can be difficult as some cases of CEPSS Type I on initial imaging later may show hypoplastic intrahepatic portal venous flow with more invasive investigation such as cardiac catheterization and angiography. CEPSS Type I malformations can further be subcategorized depending on whether the splenic and SMV enter the systemic venous drainage separately (Type 1a) or if they converge to a common vessel before entering the systemic venous system (Type 1b) (Figure 3). CEPSS Type II malformations describe extrahepatic shunts where some of the portal flow is still intact in the presence of a smaller side-to-side anastomosis between the portal and systemic venous systems (Figure 4A-D). Persistence of the left vitelline vein leads to Type II shunts draining above the hepatic confluence or connect to the right atrium (Figure 4D).

Congenital cavernous malformations are a separate extrahepatic portal malformation worth mentioning. Cavernous malformations are typically secondary to portal venous thrombus and as a response to portal hypertension, but congenital idiopathic malformations have been described. Liver vascular ultrasound may be read erroneously as antegrade flow if the collateral vessels are densely packed. It can be best identified on computed tomography (CT) angiography (Figure 5).

Congenital intrahepatic porto-systemic shunts

Congenital intrahepatic porto-systemic shunts (CIPSS) occur inside the liver where some normal portal venous blood flow through the liver is preserved. The embryological origins of these rare anomalies can arise from the failed fusion of the right vitelline and umbilical venous plexus which create communications between intrahepatic portal and hepatic or perihepatic veins^[3,5]. CIPSS are sub-typed by location and extent of the shunt. The most widely used classification system for intrahepatic shunts was outlined by Park *et al*^[6] in a case series from 1990. There he described 14 cases of various intrahepatic shunts (Figure 6 and Table 2). Type 1 is the most common (Figure 7). They are associated with cirrhosis if they persist but often close on their own. A patent DV is technically an intrahepatic shunt as it arises from a persistent connection between the left portal vein and a left hepatic vein *via* the partially involuted left umbilical vein which fails to close after birth to create the ligamentum venosum. This may be secondary to congenital heart disease causing altered hemodynamics and delayed ductal closure^[7]. Patency may induce hypoplasia of the portal venous system^[3].

Presentations and complications

CHS may be found in isolation, but associations with other congenital abnormalities have been described. Several cardiac congenital anomalies are associated with CHS including atrial and ventricular septal defects, patent foramen ovale, tetralogy of Fallot, and occasionally meso and dextrocardia^[4]. Situs ambiguous with malrotation and polysplenia has also been described. Other GI manifestations include malrotation, annular pancreas, and biliary atresia. About eight percent of extrahepatic shunt patients can also have polysplenia or continuation of the azygos or hemiazygos systems into the inferior vena cava^[3]. There is also an increased incidence of CHS in

Table 1 Morgan and Superina extrahepatic shunts

Morgan and Superina extrahepatic shunts
Type I: “Abernethy malformation” portal blood flow bypasses the liver entirely and empties into the IVC
The splenic vein and SMV enter the IVC separately
The splenic vein and SMV form common vessel before entering IVC
Type II: Partial shunt where an “H type” connection between the portal system and the IVC. Some portal flow to the liver is still intact

IVC: Inferior vena cava; SMV: Superior mesenteric veins.

Table 2 Park’s classification of congenital intrahepatic portosystemic shunts

Park’s classification of congenital intrahepatic portosystemic shunts ^[5]
Large connection of constant diameter from the right portal vein to the intrahepatic IVC
Localized peripheral shunt from multiple or single communications between the peripheral branches of the portal and hepatic veins within one hepatic segment
An aneurism between connecting peripheral portal and hepatic veins
Multiple communications between peripheral and hepatic veins peripherally throughout the liver
Patent ductus venosus

IVC: Inferior vena cava.

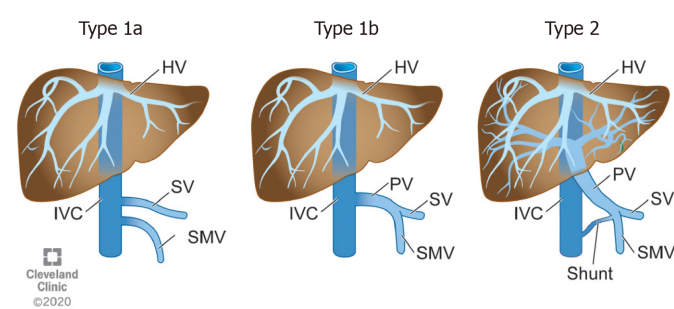


Figure 2 Morgan and Superina congenital extrahepatic portosystemic shunts. Refer to Table 1 for descriptions. HV: Hepatic vein; SV: Splenic vein; SMV: Superior mesenteric vein; IVC: Inferior vena cava; PV: Portal vein. Reprinted with permission, Cleveland Clinic Center for Medical Art & Photography ©2020. All rights reserved.

patients with various genetic conditions such as Down’s syndrome^[7]. Clinically, hepatic shunts manifest a variety of symptoms or can be indolent depending on the degree of shunting. While no longer believed to be exclusively female, CEPSS Type I are often reported with a female predominance^[4]. CEPSS Type II is more male predominant. CHS reduce vital nutrition to the developing liver in utero. As 75% of the hepatic blood flow arrives *via* the portal vein, CHS can significantly affect liver growth and function. Liver atrophy occurs due to loss of nutrient flow to the liver as well as stimulating growth factors such as insulin and glucagon. In CHS, liver volumes can be 50%-60% of normal^[8]. The body compensates for decreased portal blood flow by increasing hepatic arterial flow; however, this blood is low in nutrients, insulin, and glucagon. As a result, the cellular regenerative capacity of the liver is compromised leading to liver nodules in 20%-50% of patients^[4,9]. These nodules are typically regenerative, but malignant lesions including hepatoblastoma and hepatocellular carcinoma have been described. There are currently eight reported cases of hepatoblastoma secondary to CHS in the literature as young as 17-months-old^[9]. Correction of the shunt is associated with resolution of benign nodules^[10]. De Vito *et al*^[11] described histological characteristics of hepatic tissue in CHS based on a review of autopsied livers, wedge and core needle biopsies. These biopsies showed small portal venules, prominent thin walled channels, and otherwise observed

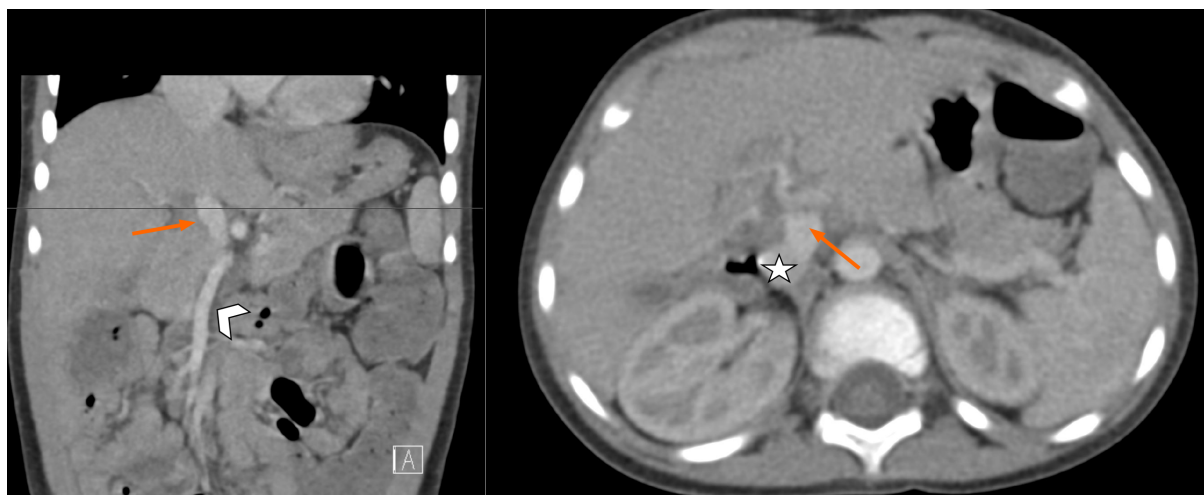


Figure 3 Two-year-old with Abernethy Malformation Type 1b (arrow). A connection from superior mesenteric vein (chevron) to the inferior vena cava (star).

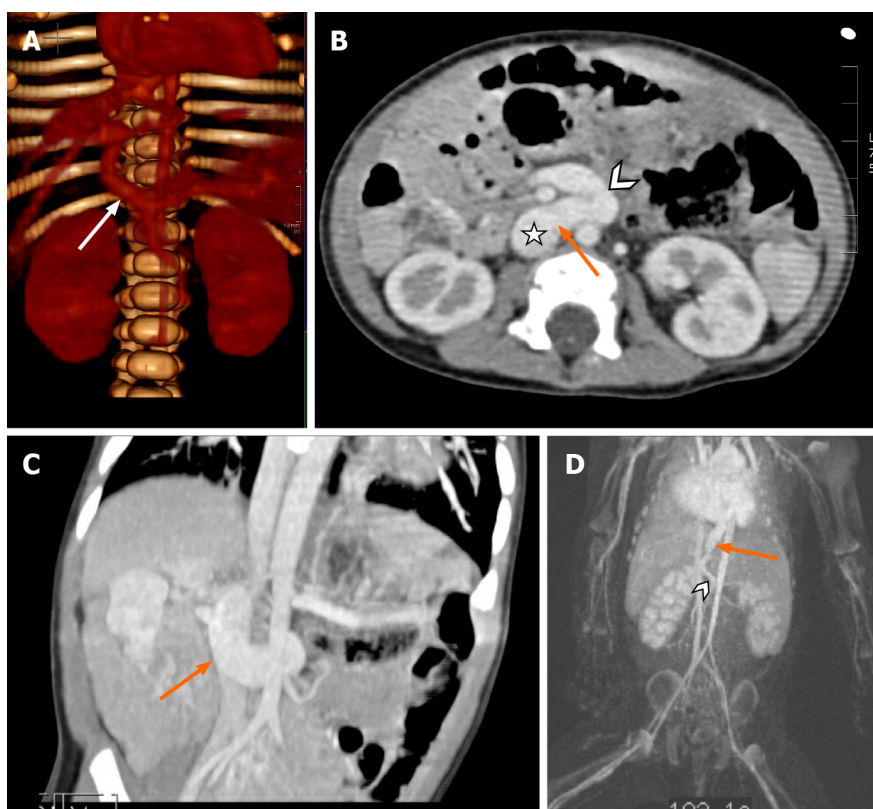


Figure 4 Examples of congenital extrahepatic portosystemic shunts. A: Nineteen-month-old with congenital extrahepatic porto-systemic shunts (CEPSS) Type II. Connection (arrow) of portal vein to inferior vena cava (IVC). Reconstruction 3D rendering of a computed tomography scan; B and C: One year old with a history of heterotaxia, intestinal malrotation, pulmonary arteriovenous malformations and CEPSS Type II (orange arrow), portal vein (chevron) to IVC (star); D: Type II extrahepatic shunt superior mesenteric vein (chevron) and shunt (arrow) draining directly into the right atrium.

portal arterio-biliary dyads suggesting atrophied venules. Increased arterial profiles were also evident, in keeping with the known compensatory mechanism of blood flow to the hepatocytes as described above. Vacuolization of hepatic nuclei, a sign of hepatocyte aging, was not evident. While the cause is not fully understood, this appears to be a result of decreased exposure to anabolic and catabolic hormones such as insulin and glucagon^[12]. In the developing pediatric liver, the exposure of these hormones is likely essential to normal liver remodeling which is interrupted in patients with CHS^[11].

Presentations in the neonatal period include hyperammonemia or hyper-



Figure 5 Computed tomography abdomen showing congenital cavernous malformation of the portal vein (arrow).

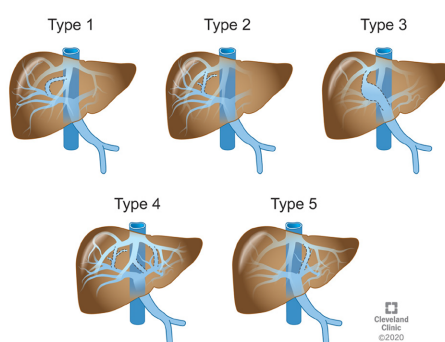


Figure 6 Park's classifications of congenital intrahepatic portosystemic shunts. Refer to Table 2 for description. Reprinted with permission, Cleveland Clinic Center for Medical Art & Photography ©2020. All rights reserved.

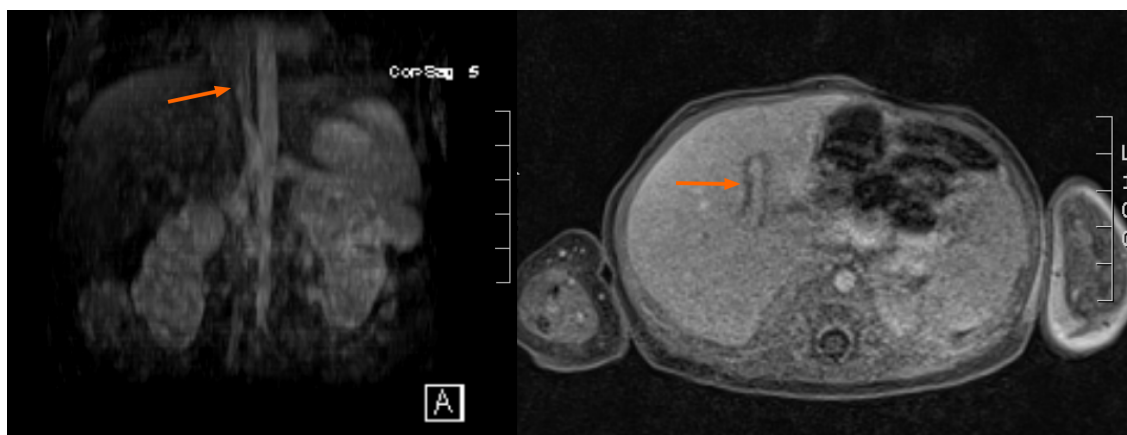


Figure 7 Intrahepatic shunt, main portal vein to the left hepatic vein (arrow).

galactosemia along with elevated bile acids. Galactose is typically processed in the liver by uridine diphosphate (UDP) enzymes to be converted into glucose and stored as glycogen. Similarly, bile acids are excreted into the intestines and reabsorbed and reprocessed in the liver. In CHS, galactose rich blood partially or totally bypasses the liver leading to galactosemia without UDP enzyme deficiency. As such, CHS should remain on a differential diagnosis for galactosemia in newborns with bile acidemia^[13]. Neonates may present with cholestasis. It is unclear if the cholestasis is a result of the hepatic shunting or an inciting factor which increases the resistance of blood flow through the liver favoring extrahepatic diversion.

Stigmata of chronic liver disease can be present overtime including spider nevi,

digital clubbing, generalized fatigue, ascites, and growth failure. As the child ages, ongoing stress on the liver and chronic systemic exposure or toxic metabolites that have bypassed the liver will predispose the patient to hepatic encephalopathy, hepatopulmonary syndrome (HPS), or pulmonary hypertension^[3,4]. Hepatic encephalopathy occurs when unprocessed ammonia produced by gut flora and absorbed by the intestines is processed into glutamine in the brain, which is neurotoxic^[10]. While testing for hepatic encephalopathy in pediatrics is not well defined, monitoring ammonia levels is commonly done, especially if acute neurologic changes occur. Baseline elevated ammonia levels are seen in 66%-100% of patients with CHS^[10]. While this was initially described in adults more than children, neurologic disease in children appears to be more indolent and the cause of seizures, irritability, and cognitive deficits. Hepatic encephalopathy is correlated well with shunt size^[3]. Shunt ratios between 30%-60% are at increased risk of developing hepatic encephalopathy following systemic stress such as illness. If a shunt is > 60% then patients are at risk of spontaneous encephalopathy and warrants treatment^[4].

HPS occurs in about 10% of patients with CHS^[10]. While the cause is not completely understood, poor hepatic clearance of vasodilator substances acting on pulmonary endothelium is believed to be involved. Neonatal presentation may be subtle hypoxia. Older children will present with dyspnea on exertion and increased cardiac output. Orthodeoxia and platypnea, shown clinically as paradoxical improvement in dyspnea when transitioned to a supine position from an upright position, may also be seen in older children. Diagnosis can be made with either a "bubble" echocardiogram or technetium 99m-labeled macroaggregated albumin study. Both can measure the severity of HPS. Liver transplant remains a cornerstone of treatment for HPS for chronic liver disease^[10].

Portopulmonary hypertension can occur in 13%-66% of CHS patients. It is often asymptomatic but can cause altered consciousness or syncope. It is thought to be caused by micro emboli and vasoconstrictive substances which typically are filtered by the liver. It is defined on cardiac catheterization as pulmonary artery wedge pressure of > 25 mmHg. The degree of severity does not correlate with shunt size. Early diagnosis and monitoring of portopulmonary hypertension is necessary as it is irreversible, even after shunt closure, and carries up to a 50% mortality rate^[10].

Diagnosis: Images and biopsies

Imaging is essential for the diagnosis of CHS. Non-radioactive modalities are preferred for initial investigation. Ultrasonography (US) is widely utilized in the neonatal period, which is highly specific if a portal vein is absent. A small sized liver is further evidence of compromised portal venous blood flow. The ability to apply Doppler can help provide qualitative data such as direction of blood flow within the shunt. Intrahepatic shunts will have antegrade blood flow on color Doppler. US is generally well tolerated and exposes the patient to no ionizing radiation^[3,4]. Unfortunately, there is considerable operator variability and the acoustic window remains relatively small. As such, it may not highlight intrahepatic shunts and more detailed follow-up imaging with magnetic resonance angiography (MRA) or computed tomography angiography (CTA) is required.

Multidetector CTA is the gold standard for diagnosis and characterization of hepatic shunts given easy availability, rapid processing time, and detailed imaging with three-dimensional reconstruction of the hepatic vasculature. This provides the clearest picture for treatment either by a surgical team or interventional radiologist. The benefits of CT must be weighed against the increased risks of cancer from radiation exposure and nephrotoxicity secondary to contrast medium. CTA is also advantageous for patients who will not tolerate the lengthy scan time or in those with metal implants which prohibit the use of MR^[4].

MRA provides excellent imaging of hepatic vasculature as well as characterize focal hepatic lesions without the associated ionizing radiation found in CT scans. Liver nodules are best defined on MR. Hyperplastic lesions are usually multiple and have increased signal intensity on T1-weighted imaging during the arterial phase and remain bright in the venous phase^[4]. They vary in size from 0.5 cm to 4 cm in diameter.

For CEPSS Type II, it is helpful to determine the degree of partial shunting. Nuclear medicine may be used to measure the degree of shunting by calculating a portosystemic shunt index. In transrectal portal scintigraphy, radiolabeled ¹²³I Iodoamphetamine is introduced into the distal colon *via* enema and absorbed through the inferior mesenteric vein. In patients without CHS, the isotope is taken up only by the liver. In patients with CHS, some or all of the isotopes travel through the shunt into the systemic circulation and accumulate in the lungs. By taking images of the liver and lungs, a shunt ratio is calculated thus determining the severity of the shunt. Shunt

ratios > 5% are considered abnormal^[4].

Diagnosis of CHS can be mostly made with the imaging modalities described above; however, there is a role for liver biopsy for patients who appear to have Abernathy's malformation. If liver venules are present within portal triads, this may be evidence for the diagnosis of Type II CEPSS which would help management planning. Biopsies of suspicious hepatic nodules to rule out malignancy is also recommended.

Treatments and prognosis

CHS are rare and there are no large studies to drive treatment guidelines; however, some general principles are described here. Management of CHS first involves work up to rule out other causes and for assessment of other congenital anomalies. Shunt anatomy and severity of diverted portal venous blood flow is paramount. Before committing to intravascular or surgical management, one must first decide if or when intervention is necessary. The timing of intervention has also been greatly debated. Small type II CEPSS and many intrahepatic shunts may close spontaneously by 12 mo of age and only require close monitoring. Shunts that persist beyond 24 mo are unlikely to close spontaneously. Persistent DV and large Type II CEPSS with shunt ratio > 60% are at increased risk of developing hepatic encephalopathy and are unlikely to close spontaneously. Prophylactic closure prior to 24 mo is advised^[3,14]. Symptomatic sequelae such as cardiovascular involvement, hepatic encephalopathy, or the existence of liver nodules warrant immediate treatment regardless of the shunt type. Regularly monitoring liver enzymes, alpha-fetoprotein, PT/INR, and ammonia levels as well as hepatic blood flow *via* ultrasound with doppler every 3-6 mo is essential. MR of liver annually is also often utilized in monitoring.

Hyperammonemia is treated by lowering the nitrogen load through diet modification and disruption of ammonia production and gut absorption. A low protein diet will limit the nitrogen load; however, this must be balanced with meeting the body's needs for growth. We recommend a daily limit of 0.8-1.0 g/kg of dietary protein to meet nutritional needs. Co-management with a dietician is recommended. Interrupting ammonia reabsorption in the intestines can be achieved by adding lactulose, a non-absorbable sugar which acidifies the stool and promotes ammonia (NH₃) conversion to non-absorbable ammonium (NH₄⁺). Alternatively, using non-absorbable antibiotics such as rifaximin or neomycin reduces bacterial load in the intestines and stops NH₃ production^[4].

Intravascular closure: A definitive diagnosis of the shunt using angiography can map the vascular anatomy and assess how blood flow dynamics change with temporary shunt occlusion with the angiocatheter balloon. Sometimes, presumed CEPSS Type I are found to have open collateral vessels during temporary shunt occlusion, thus redefining them as CEPSS Type II (Figure 8A and B). Closure of Type II CEPSS as well as persistent isolated intrahepatic shunts serves to redirect portal blood flow back through the functioning liver. Portal pressure readings within the occluded vessel will determine further treatment. If portal pressure exceeds 30 mmHg, then total occlusion could cause sudden portal hypertension leading to hepatic stress and dysfunction. Therefore, a two-stage closure is recommended to allow the liver to gradually accommodate the re-routed blood flow^[3] (Figure 8A-D). A variety of occlusion devices can be deployed including coils and intravascular plugs. Large shunts may be amenable to vascular plugs which can be adjusted prior to deployment for two-stage occlusion (Figure 9). Utilization in small peripheral extrahepatic shunts such as splenorenal shunts has also been described. Careful planning by skilled interventionalists is paramount. Intravascular plugs placed in short shunts with large diameter are at risk of plug migration into the systemic circulation.

Surgical management: Alternatively, laparoscopic surgical ligation may be safer for large diameter and/or short extrahepatic shunts which would make intravascular coils or plugs difficult to place. Intraoperative temporary occlusion can also be performed to assess for large hemodynamic shifts that necessitate two-stage closure. For large intrahepatic shunts which do not close spontaneously, a partial liver resection is also an option if device closure is not possible, failed, or if there is a concurrent hepatocellular mass. Shunt occlusion with N-butyl cyanoacrylate lipiodol has also been used to sclerose shunts^[3,10].

Liver transplant: CEPSS Type I often requires liver transplant as there is an absence of portal vasculature through the liver. Symptomatic CEPSS Type I is a clear indication for an expedient liver transplant. Liver transplant is also reserved for severe complications such as hepatic encephalopathy, hepatoblastoma or hepatocellular carcinoma, and HPS^[3,10]. Prophylactic liver transplantation in asymptomatic CHS

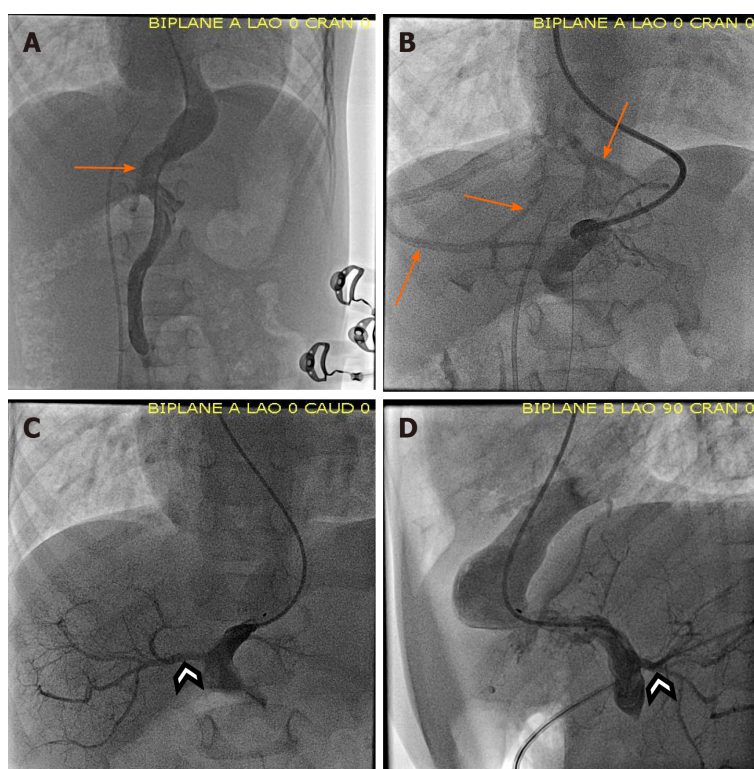


Figure 8 Intravascular closure. A: Angiography showing a large congenital extrahepatic porto-systemic shunts (CEPSS) Type II (arrow); B: Balloon occlusion of the shunt revealing multiple large intrahepatic collateral vessels (arrows) (CIPSS Type IV); C: Anteroposterior; D: Lateral views of repeat angiography several months post partial occlusion of shunt showing improvement in portal venous flow after partial occlusion with better visualization of the right portal vein (chevron). Occlusion device not seen.



Figure 9 Four-year-old boy with heterotaxia and congenital extrahepatic porto-systemic shunts Type II two years post device closure (arrow). He subsequently developed a cavernous transformation of the portal vein (chevron).

patients has been debated and warrants careful consideration. Holding off until the inevitable pulmonary complications (PH and HPS) arise make perioperative care difficult; however, early transplantation increases the lifetime exposure to immunosuppressive medications (Figure 10). Techniques for connecting the transplanted PV to the recipient PV have different risks and benefits. End-to-end anastomosis is complicated by small bowel venous congestion. End-to-side anastomosis has less risk of small bowel congestion but may require an additional interposition venous graft to make the connection.

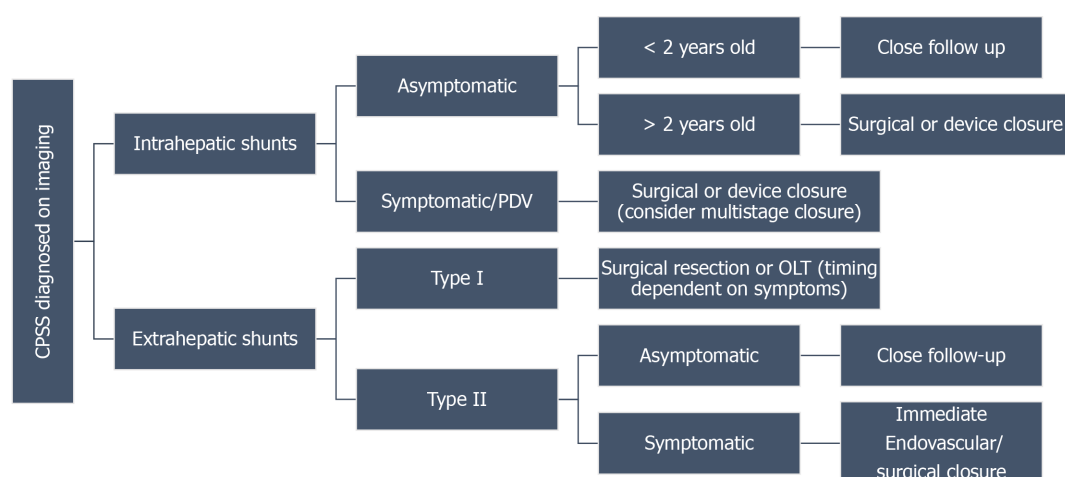


Figure 10 Congenital portosystemic shunts treatment algorithm. OLT: Orthotopic liver transplant; CPSS: Congenital portosystemic shunts.

Prognosis and complications

Patients still require regular follow-up after shunt closure. Reversal of hepatic encephalopathy and HPS is typical; however, pulmonary hypertension is unlikely to resolve following shunt occlusion but may respond to pulmonary vasodilator medication. Liver nodule regression is common. Transient portal hypertension often follows shunt occlusion. This can resolve as the liver gradually accommodates more portal blood flow, but persistent portal hypertension may spawn secondary shunts such as splenorenal shunts. Altered blood flow after shunt closure also increases the risk of portal vein thrombosis leading to portal hypertension^[14]. As previously stated, migration of closure devices may theoretically occur, and patients must be made aware of this risk.

HHT (OSLER WEBER RENDU SYNDROME)

HHT is a rare autosomal dominant condition occurring in 1-2 cases per 10000, characterized by multiple angiodysplasia lesions which classically present in the skin and mucous membranes. In mucosa, they occur at the capillary level where postcapillary venules dilate and fuse with arterioles creating an arteriovenous shunt^[13]. Clinical diagnostic criteria are listed^[14] (Table 3). Frequent epistaxis is the most common clinical manifestation. Visceral organ involvement can occur in the liver (most common), pulmonary system, intestines, or brain and spinal cord^[15]. Earlier diagnosis is on the rise following improvements in multidetector CT which can produce a clearer definition of vascular abnormalities within the organs. HHT has been categorized into two distinct types associated with distinct gene mutations with a third type currently undergoing investigation^[15]. Types 1 and 2 both involved genes which control the transforming growth factor beta (TGF-beta) pathway^[15]. TGF-beta signaling pathway will go on to stimulate vascular endothelial growth factor which induces vascular proliferation. The genetic mutation for type 1 is in a gene called *ENG*, found on chromosome 9, which codes for Endoglin, a TGF-beta receptor. Type 2 is caused by a mutation on chromosome 12 which codes for activin receptor-like kinase type 1 (ALK-1). Hepatic involvement in HHT is almost always associated with ALK-1 mutation and type 2 HHT^[16,17]. There have also been cases of patients with juvenile polyposis syndrome (SMAD4 mutation) with HHT overlap, presenting with anemia, epistaxis, and pulmonary and liver telangiectasia^[18]. Studies have suggested that between 15%-22% of patients with SMAD4 mutation can develop JPS-HHT overlap^[18].

Liver involvement with HHT was first proposed in the late 19th century. By the mid-20th century medicine had described three categories of HHT based on if hepatic telangiectasia were present and if the patients developed fibrosis or cirrhosis^[19]. Hepatic involvement can occur in 74%-79% of patients and can be identified at an early age; however, symptoms typically do not manifest before the third decade of life^[16]. Liver biopsy will show fibrosis and cord atrophy, capillary hyperplasia, and hyperplastic vascular ectasia^[16]. The type and extent of the shunt can determine the

Table 3 Hereditary hemorrhagic telangiectasia

Hereditary hemorrhagic telangiectasia (must have at least three of the following)
Recurrent spontaneous epistaxis
Mucocutaneous telangiectasia
Family history of HHT
Presence of visceral involvement

HHT: Hereditary hemorrhagic telangiectasia.

involvement. Only eight percent of patients with HHT and liver involvement will become symptomatic^[16].

Liver vascular malformations are unique to other telangiectasias given the three vascular pathways which interact with the liver: Hepatic arteries, hepatic veins, and portal veins. Three types of intrahepatic shunts can develop: Arteriovenous, arterioportal, and portovenous. More than one type of shunt can develop in the same patient, but one may dominate functionally^[15]. Arteriovenous shunts are the most common (50%). They can classically induce hepatomegaly following congestive heart failure and pulmonary hypertension. Arterioportal shunts are less common and patients usually have arteriovenous shunting as well. Arterioportal shunts often induce portal hypertension from increased blood flow and back pressure on the portal tree. Portal hypertension, classically defined as a hepatoportal venous gradient > 10 mmHg, develops in the fifth or sixth decade of life. It presents with classic transudative ascites and varices are prone to hemorrhage. Lastly, portovenous shunts are typically only seen on microscopy in childhood but may become more prominent shunts by the fifth or sixth decade of life^[15].

Presentation and diagnosis

Complications from liver involvement typically occur in middle age. High output cardiac failure is the most common symptom and is associated with vascular malformations large enough to produce a bruit or palpable thrill in the epigastrium on exam^[15]. The presentation of cardiac failure with orthopnea, dyspnea on exertion, and edema is classic. Pregnancy may be a precipitating or exacerbating event in women. Abdominal angina secondary to mesenteric artery “steal” phenomenon has also been described^[15]. Portal hypertension is the second most common complication and is associated with arterioportal malformations. They can eventually cause ascites and gastric and esophageal variceal bleeding. Altered blood flow through the hepatocytes can create perfusion abnormalities. This can lead to focal nodular hyperplasia (2.9% of cases) and periportal fibrosis. Focal nodular hyperplasia and concomitant portal hypertension may be misdiagnosed as liver cirrhosis. Unlike in cirrhosis, these livers typically maintain synthetic function^[15] (Table 4).

Biliary disease is also well described in HHT with liver involvement. It is thought to be related to shunt induced biliary ischemia and manifests as strictures of the gallbladder neck or intra or extrahepatic bile ducts. This typically affects women in their late 30 s. Often serum alkaline phosphatase and gamma-glutamyl transferase are elevated, thus patients may be erroneously diagnosed with cholecystitis and undergo cholecystectomy. In another case series of HHT patients, three of 12 patients developed bilomas^[16]. Surprisingly, each of these patients had intrahepatic arteriovenous shunting and elevated alkaline phosphatase, but with normal bilirubin. Lastly, large portovenous malformations leading to hepatic encephalopathy have been rarely reported.

Diagnosis of liver involvement typically begins with a high index of suspicion following history and exam and is confirmed with imaging. Patients with known HHT without pulmonary arterio-venous malformations (AVMs) who present with dyspnea and ascites may be in cardiac failure. Liver ultrasound with Doppler and contrast spiral CT are recommended as initial, non-invasive investigations. These tests will show evidence of intrahepatic telangiectasias and an enlarged common hepatic artery in symptomatic individuals^[15]. Biliary abnormalities seen on magnetic resonance cholangiopancreatography (MRCP) or endoscopic retrograde cholangiopancreatography (ERCP) are seen even in patients without biliary symptoms suggesting a progressive course of the disease. Cardiac catheterization and angiography are invasive but considered the gold standard for determining the shunt severity as well

Table 4 Vascular shunts associated with hereditary hemorrhagic telangiectasia

Vascular shunts associated with HHT	Associated systemic/Hepatic manifestations
Arteriovenous	Hepatomegaly
	Pulmonary hypertension
	High output cardiac failure
	Biliary ischemia/biloma
	Abdominal angina
Arteriportal	Focal nodular hyperplasia
	Non-cirrhotic portal hypertension
	Hepatic encephalopathy
Portovenous	Hepatomegaly
	Hepatic encephalopathy
	High output cardiac failure
	Non-cirrhotic portal hypertension
	Focal nodular hyperplasia

HHT: Hereditary hemorrhagic telangiectasia.

as the degree of heart failure if present. Portal wedge pressures can also be measured to confirm portal hypertension if present. Mesenteric steal syndrome can also be confirmed in patients presenting with abdominal pain.

Treatment

Treatment of HHT is largely symptomatic control. Patients may require blood transfusions for ongoing blood loss from cutaneous bleeding. Iron deficiency is common, and supplementation is frequently required. Laser therapy may be needed for treatment of skin telangiectasias. Endoscopy typically utilizes argon plasma coagulation for gastrointestinal AVMs. Esophageal varices should be treated as they are for any other cases of portal hypertension. Liver AVMs can predispose to high output cardiac failure and may be treated with diuretics. Previously used as a compassionate care drug to treat childhood cancers, bevacizumab is an anti-VEGF antibody that has been shown to treat bleeds from cutaneous and gastrointestinal telangiectasia leading to a significantly decreased need for transfusions. Interferon has been utilized for control of cutaneous telangiectasia. In adults, hepatic arterial embolization has been described as a more of a temporizing, palliative care option in patients with arteriovenous and arteriportal shunts who failed medical management. For extensive, medically refractory disease or portovenous disease, liver transplant remains an option. This is often used for extensive hepato-biliary necrosis and or heart failure (Table 5).

MULTIFOCAL VASCULAR HEMANGIOMAS WITH EXTRACUTANEOUS DISEASE

Infantile hemangiomas remain the most common tumor in neonates with a prevalence estimated at 4%-5% of all infants^[20]. They are benign endothelial tumors but can lead to comorbidities based on size, location, and the number of lesions. Isolated cutaneous lesions are the most common, but visceral involvement, most commonly in the liver, is also seen with and without cutaneous lesions.

While isolated hemangiomas are common, multiple lesions are more likely to have a genetic cause and carry higher morbidity and mortality if untreated. Diffuse neonatal hemangiomas were first described in the early 1970s and 1980s, but the term suffered from ambiguity over the decades. It has meant to cover several conditions that have now been isolated through immunohistochemistry studies and better clinical characterization^[21]. The term multifocal vascular hemangiomas with or without

Table 5 Hereditary hemorrhagic telangiectasia hepatic involvement treatment considerations

HHT hepatic involvement treatment considerations
Symptom control: Iron deficiency, heart failure, esophageal varices
Anti-VEGF antibodies (<i>i.e.</i> , bevacizumab)
Hepatic arterial embolization: Typically, an adult palliative option
Liver transplant: In setting of extensive hepato-biliary necrosis or heart failure

HHT: Hereditary hemorrhagic telangiectasia.

extracutaneous disease are now the preferred terminology; however, most of the literature still uses a variety of terms.

A recent publication in the *Journal of Pediatrics*^[22] classified hemangiomas in the first year of life as either congenital or infantile as they follow different courses and have different treatment and management guidelines. Congenital hemangiomas grow in-utero and are present at birth. They are often identified on antenatal ultrasound. Lesions typically stain negative for glucose transporter 1 (GLUT-1) if biopsied. Large lesions have high vascular flow and are associated with hemodynamic instability and heart failure which may be the presenting symptom at birth. Other complications from large lesions include mild anemia, thrombocytopenia, and hypofibrinogenemia; however, these are typically transient and not as dramatic as what is seen in the Kasabach-Merritt phenomenon. Congenital hemangiomas are subcategorized into one of three patterns: Rapidly involuting congenital hemangiomas (RICH) where there is a complete self-resolution of the lesion within two years, partially involuting congenital hemangiomas where size reduces but never fully resolves, and non-involuting congenital hemangiomas where lesion size remains the same. Monitoring is the mainstay of treatment for these lesions with regular complete blood counts in the neonatal periods to assess for cytopenias and echocardiogram to monitor heart function. Hepatic lesions should be monitored with ultrasound every two weeks initially and extending the image interval by two weeks when lesion(s) are stable or start to involute. Patients should be followed for at least one year. RICH will have 80% total remission by 12 mo of age. Overall, 50% of congenital hemangiomas resolve by age five and 90% by age nine.

In contrast, infantile hemangiomas that develop in the neonatal period follow a different pattern. They typically grow over the first 6-12 mo of life. They often stain positive for GLUT-1 and are multifocal. Their progression in size through infancy means that their risk of complications increases during the first year of life compared to congenital hemangiomas. Heart failure and compartment syndrome are the most severe risk and carry a 16% mortality if not treated. Lastly, cytopenias may develop over time.

Hepatic hemangiomas

Hemangiomas presenting in the liver require thorough workup and close observation. They may be present in 0.4% to 20% of the population at any time, and between 0.4% and 7.3% based on autopsy studies^[23,24]. Most are incidental findings on imaging for abdominal pain which are often unrelated to the hemangioma, particularly if it is small. Outcomes are dependent on the level of hepatic involvement. Hepatic hemangiomas can be categorized by size: Small (0-3 cm), medium, (3-10 cm), and large (greater than 10 cm)^[24]. Solitary small and medium hepatic hemangiomas are more likely to behave like solitary cutaneous hemangiomas. These lesions may self-involute, while others can have high flow and persist. As such, they may be amenable to embolization *via* coiling or enucleation. If lesions are multifocal or diffuse, they are more reflective of infantile hepatic hemangiomatosis (IHH). IHH can be associated with high output cardiac failure, and coagulopathy depending on the level of involvement. Hepatic hemangiomatosis can either be present in the nodular or the non-nodular patterns which can be identified on CT or magnetic resonance imaging (Figure 11). The non-nodular pattern is more common overall. The latter will show coalescing ovoid low attenuation nodules measuring between 5-10 mm^[25]. Contrast images may find vascular pooling within the lesion and centripetal enhancement^[26]. Biopsy of these lesions will show endothelial-lined sinusoidal proliferation with erythrocyte content. Often, they are GLUT-1 positive. Of note, there has been one incidental case of diffuse hereditary hemangiomatosis in a 68-year-old adult with only

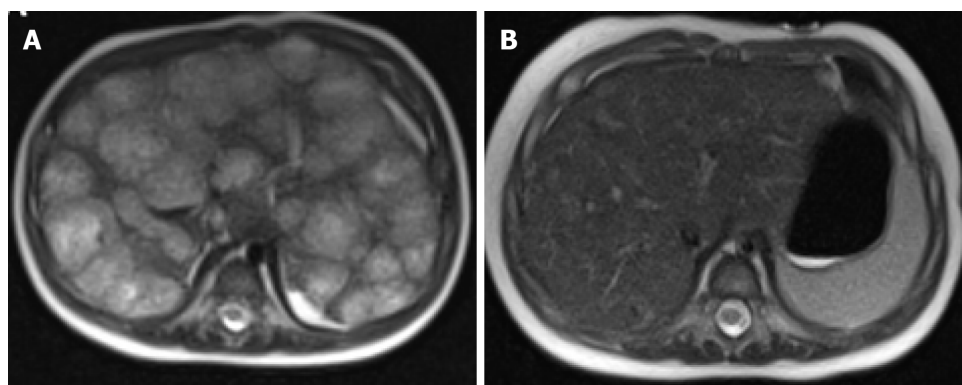


Figure 11 Magnetic resonance imaging results. A: Magnetic resonance imaging (MRI) of liver in a 4-month-old at the time of the diagnosis, axial T2-weighted (HASTE) image showing multiple nodular hyperintense lesions with centripetal fill-in on the delayed phase; B: MRI of the liver 3 mo after starting atenolol treatment, subsequent axial T2-weighted image showing interval decrease in size of enhancing lesions and improving hepatomegaly.

liver involvement^[27]. Large hemangiomas, up to 20 cm in some reports, can cause compressive symptoms causing pain and cholestasis in some cases^[23].

Multifocal lymphangioendotheliomatosis with thrombocytopenia (MLT) should be on the differential for any child who presents with multiple hemangiomas. This diagnosis is distinct with notable thrombocytopenia, caused by a consumptive process, as well as the presence of lymphatic vessel endothelial receptor 1 (LYVE-1) on skin biopsies. GLUT-1 is negative in MLT. Hemangiomas are smaller 1-2 mm in diameter by comparison and grow at a slower rate than hemangiomas. GI bleeding is common, but liver involvement is rare. Platelet consumption is also seen in kaposiform hemangioendothelioma or tufted hemangiomas. This carries a high risk of developing Kasabach-Merritt syndrome^[21].

Treatment and prognosis

As stated above, most isolated cutaneous hemangiomas will self-resolve without the need for medical or surgical management. Treatment considerations for the gastroenterologist are outlined here (Table 6). Large hepatic hemangiomas are associated with hypothyroidism secondary to increased type III thyronine deiodinase activity which binds and eliminates circulating T3 thyroid hormone^[28]. Thyroid hormone screening on all infants with IHH is recommended and replacement is advised to prevent complications of hypothyroidism^[28]. Of note, hypothyroidism on newborn screen is not typically detected in these patients.

The prognosis of infantile hemangiomas is favorable and needs only conservative treatment; however, multiple lesions and visceral organ involvement warrant medical therapy, as high output heart failure and coagulopathy carry a high mortality if untreated^[21,29]. Propranolol has been proven to be effective in the treatment of hepatic as well as cutaneous hemangiomas^[28,30-32]. Meta-analysis has found it to be superior to placebo and oral steroids^[33]. Commonly reported adverse events with oral propranolol include diarrhea, constipation, and bronchial hyperreactivity. Propranolol's mechanism of action is thought to be related to regression of hemangioma cells and peripheral vasoconstriction leading to permanent involution within a couple of months (Figure 11). Daily dosing on 2 mg/kg/d is commonly utilized, but up to 3 mg/kg/d has been effective in high-risk airway and facial/orbital hemangiomas^[34]. Corticosteroids and weekly IV vincristine have also been studied as a treatment, but the results are inferior to propranolol^[35]. Co-involvement of a dermatologist is crucial to diagnosis and management.

Lastly, surgical, ligation, enucleation, or resection of large and or symptomatic lesions not amenable to medical therapy^[23]. Enucleation is technically easier with peripherally located hepatic hemangiomas and is associated with lower morbidity when compared with resection^[23]. Resection is typically reserved for centrally located lesions. Laparoscopic resection has decreased morbidity over open surgery. Artery embolization, or radiofrequency ablation have been used for management of acute bleeding or to shrink large lesions prior to surgery. Liver transplant is reserved for very large lesions with severe complications such as heart failure, or Kasabach-Merritt syndrome^[23].

Table 6 Treatment considerations for hepatic hemangiomas**Treatment considerations for hepatic hemangiomas**

Monitoring for self-involution
Propranolol (2-3 mg/kg/d) superior to corticosteroids or IV vincristine
Surgical ligation or resection of internal or complex hemangiomas
Enucleation for peripherally located hemangiomas
Artery embolization or radiofrequency ablation for emergency bleeding or in preparation for surgical intervention
Liver transplant for exceptionally large lesions or diffuse lesions, with severe complications such as heart failure and Kasabach-Merritt syndrome not amenable to medical management

IV: Intravenous.

CONCLUSION

We have discussed various conditions that can cause congenital hepatic shunts. Many review articles have been written on these conditions separately and through the lens of various specialties such as radiological or surgical perspectives. Our goal was to create a concise review of all congenital shunts from the stance of the pediatric hepatologist. As imaging techniques and interventional therapeutics evolve, we are better able to diagnose and study these conditions. Early detection and monitoring best serve patients and clinicians in making medical management decisions.

ACKNOWLEDGEMENTS

We would like to thank Dr. Myers M, MD from The Department of Pediatric Diagnostic Radiology and Dr. Fagan T, MD from The Department of Pediatric Cardiology at the Cleveland Clinic Foundation for their assistance with reviewing and selecting radiographic images for this review.

REFERENCES

- 1 **Harpavat S**, Mcln, V. Developmental Anatomy and Physiology of the Liver and Bile Ducts. In: Wyllie R, Hyams JS, Kay M. Pediatric Gastrointestinal and Liver Disease. Philadelphia: Elsevier Health Sciences, 2015: 811-821
- 2 **Morgan G**, Superina R. Congenital absence of the portal vein: two cases and a proposed classification system for portosystemic vascular anomalies. *J Pediatr Surg* 1994; **29**: 1239-1241 [PMID: [7807356](#) DOI: [10.1016/0022-3468\(94\)90812-5](#)]
- 3 **Papamichail M**, Pizani M, Heaton N. Congenital portosystemic venous shunt. *Eur J Pediatr* 2018; **177**: 285-294 [PMID: [29243189](#) DOI: [10.1007/s00431-017-3058-x](#)]
- 4 **Alonso-Gamarra E**, Parrón M, Pérez A, Prieto C, Hierro L, López-Santamaría M. Clinical and radiologic manifestations of congenital extrahepatic portosystemic shunts: a comprehensive review. *Radiographics* 2011; **31**: 707-722 [PMID: [21571652](#) DOI: [10.1148/rg.313105070](#)]
- 5 **Saxena AK**, Sodhi KS, Arora J, Thapa BR, Suri S. Congenital intrahepatic portosystemic venous shunt in an infant with down syndrome. *AJR Am J Roentgenol* 2004; **183**: 1783-1784 [PMID: [15547229](#) DOI: [10.2214/ajr.183.6.01831783](#)]
- 6 **Park JH**, Cha SH, Han JK, Han MC. Intrahepatic portosystemic venous shunt. *AJR Am J Roentgenol* 1990; **155**: 527-528 [PMID: [2117349](#) DOI: [10.2214/ajr.155.3.2117349](#)]
- 7 **Alkan F**, Düzgün F, Yüksel H, Tarhan S, Coşkun Ş. Percutaneous embolization of congenital portosystemic venous shunt in an infant with respiratory distress. *Turk J Pediatr* 2018; **60**: 456-459 [PMID: [30859776](#) DOI: [10.24953/turkjpeds.2018.04.019](#)]
- 8 **Shinkai M**, Ohhama Y, Nishi T, Yamamoto H, Fujita S, Take H, Adachi M, Tachibana K, Aida N, Kato K, Tanaka Y, Takemiya S. Congenital absence of the portal vein and role of liver transplantation in children. *J Pediatr Surg* 2001; **36**: 1026-1031 [PMID: [11431769](#) DOI: [10.1053/jpsu.2001.24731](#)]
- 9 **Lautz TB**, Shah SA, Superina RA. Hepatoblastoma in Children With Congenital Portosystemic Shunts. *J Pediatr Gastroenterol Nutr* 2016; **62**: 542-545 [PMID: [26488121](#) DOI: [10.1097/MPG.0000000000001012](#)]
- 10 **Guérin F**, Blanc T, Gauthier F, Abella SF, Branchereau S. Congenital portosystemic vascular malformations. *Semin Pediatr Surg* 2012; **21**: 233-244 [PMID: [22800976](#) DOI: [10.1053/j.sempedsurg.2012.05.006](#)]
- 11 **De Vito C**, Tyraskis A, Davenport M, Thompson R, Heaton N, Quaglia A. Histopathology of livers in patients with congenital portosystemic shunts (Abernethy malformation): a case series of 22 patients.

- Virchows Arch* 2019; **474**: 47-57 [PMID: 30357455 DOI: 10.1007/s00428-018-2464-4]
- 12 **Aravinthan A**, Verma S, Coleman N, Davies S, Allison M, Alexander G. Vacuolation in hepatocyte nuclei is a marker of senescence. *J Clin Pathol* 2012; **65**: 557-560 [PMID: 22447919 DOI: 10.1136/jclinpath-2011-200641]
 - 13 **Sakura N**, Mizoguchi N, Eguchi T, Ono H, Mawatari H, Naitou K, Ito K. Elevated plasma bile acids in hypergalactosaemic neonates: a diagnostic clue to portosystemic shunts. *Eur J Pediatr* 1997; **156**: 716-718 [PMID: 9296537 DOI: 10.1007/s004310050697]
 - 14 **McLin VA**, Franchi Abella S, Debray D, Guérin F, Beghetti M, Savale L, Wildhaber BE, Gonzales E; Members of the International Registry of Congenital Porto-Systemic Shunts. Congenital Portosystemic Shunts: Current Diagnosis and Management. *J Pediatr Gastroenterol Nutr* 2019; **68**: 615-622 [PMID: 30628988 DOI: 10.1097/MPG.0000000000002263]
 - 15 **Garcia-Tsao G**. Liver involvement in hereditary hemorrhagic telangiectasia (HHT). *J Hepatol* 2007; **46**: 499-507 [PMID: 17239481 DOI: 10.1016/j.jhep.2006.12.008]
 - 16 **Song W**, Zhao D, Li H, Ding J, He N, Chen Y. Liver Findings in Patients with Hereditary Hemorrhagic Telangiectasia. *Iran J Radiol* 2016; **13**: e31116 [PMID: 27895866 DOI: 10.5812/iranradiol.31116]
 - 17 **Sabbà C**, Pasculli G, Lenato GM, Suppressa P, Lastella P, Memeo M, Dicuonzo F, Guant G. Hereditary hemorrhagic telangiectasia: clinical features in ENG and ALK1 mutation carriers. *J Thromb Haemost* 2007; **5**: 1149-1157 [PMID: 17388964 DOI: 10.1111/j.1538-7836.2007.02531.x]
 - 18 **Lin HC**, Fiorino KN, Blick C, Anupindi SA. A rare presentation and diagnosis of juvenile polyposis syndrome and hereditary hemorrhagic telangiectasia overlap syndrome. *Clin Imaging* 2015; **39**: 321-324 [PMID: 25432397 DOI: 10.1016/j.clinimag.2013.05.013]
 - 19 **Bernard G**, Mion F, Henry L, Plauchu H, Paliard P. Hepatic involvement in hereditary hemorrhagic telangiectasia: clinical, radiological, and hemodynamic studies of 11 cases. *Gastroenterology* 1993; **105**: 482-487 [PMID: 8335203 DOI: 10.1016/0016-5085(93)90723-p]
 - 20 **Kilcline C**, Frieden IJ. Infantile hemangiomas: how common are they? *Pediatr Dermatol* 2008; **25**: 168-173 [PMID: 18429772 DOI: 10.1111/j.1525-1470.2008.00626.x]
 - 21 **Glick ZR**, Frieden IJ, Garzon MC, Mully TW, Drolet BA. Diffuse neonatal hemangiomatosis: an evidence-based review of case reports in the literature. *J Am Acad Dermatol* 2012; **67**: 898-903 [PMID: 22341467 DOI: 10.1016/j.jaad.2012.01.018]
 - 22 **Iacobas I**, Phung TL, Adams DM, Trenor CC 3rd, Blei F, Fishman DS, Hammill A, Masand PM, Fishman SJ. Guidance Document for Hepatic Hemangioma (Infantile and Congenital) Evaluation and Monitoring. *J Pediatr* 2018; **203**: 294-300. e2 [PMID: 30244993 DOI: 10.1016/j.jpeds.2018.08.012]
 - 23 **Leon M**, Chavez L, Surani S. Hepatic hemangioma: What internists need to know. *World J Gastroenterol* 2020; **26**: 11-20 [PMID: 31933511 DOI: 10.3748/wjg.v26.i1.11]
 - 24 **Bajenaru N**, Balaban V, Săvulescu F, Campeanu I, Patrascu T. Hepatic hemangioma -review-. *J Med Life* 2015; **8** Spec Issue: 4-11 [PMID: 26361504]
 - 25 **Poirier VC**, Ablin DS, Frank EH. Diffuse neonatal hemangiomatosis: a case report. *AJNR Am J Neuroradiol* 1990; **11**: 1097-1099 [PMID: 2124035]
 - 26 **Nip SY**, Hon KL, Leung WK, Leung AK, Choi PC. Neonatal Abdominal Hemangiomatosis: Propranolol beyond Infantile Hemangioma. *Case Rep Pediatr* 2016; **2016**: 9803975 [PMID: 27110421 DOI: 10.1155/2016/9803975]
 - 27 **Batista A**, Matos AP, Neta JO, Ramalho M. Diffuse Hepatic Hemangiomatosis in the Adult without Extra-hepatic Involvement: An Extremely Rare Occurrence. *J Clin Imaging Sci* 2014; **4**: 43 [PMID: 25250192 DOI: 10.4103/2156-7514.139733]
 - 28 **Yeh I**, Bruckner AL, Sanchez R, Jeng MR, Newell BD, Frieden IJ. Diffuse infantile hepatic hemangiomas: a report of four cases successfully managed with medical therapy. *Pediatr Dermatol* 2011; **28**: 267-275 [PMID: 21517953 DOI: 10.1111/j.1525-1470.2011.01421.x]
 - 29 **Agarwal S**, Sharma A, Maria A. Diffuse neonatal hemangiomatosis presenting as congestive heart failure. *Dermatol Pract Concept* 2017; **7**: 66-69 [PMID: 29085724 DOI: 10.5826/dpc.0703a15]
 - 30 **Ferrandiz L**, Toledo-Pastrana T, Moreno-Ramirez D, Bardallo-Cruzado L, Perez-Bertolez S, Luna-Lagares S, Rios-Martin JJ. Diffuse neonatal hemangiomatosis with partial response to propranolol. *Int J Dermatol* 2014; **53**: e247-e250 [PMID: 23834677 DOI: 10.1111/ijd.12155]
 - 31 **Mazereeuw-Hautier J**, Hoeger PH, Benlahrech S, Ammour A, Broue P, Vial J, Ohanessian G, Léauté-Labrèze C, Labenne M, Vabres P, Rössler J, Bodemer C. Efficacy of propranolol in hepatic infantile hemangiomas with diffuse neonatal hemangiomatosis. *J Pediatr* 2010; **157**: 340-342 [PMID: 20488455 DOI: 10.1016/j.jpeds.2010.04.003]
 - 32 **Meyer L**, Graffstaedt H, Giest H, Truebenbach J, Waner M. Effectiveness of propranolol in a newborn with liver hemangiomatosis. *Eur J Pediatr Surg* 2010; **20**: 414-415 [PMID: 20628969 DOI: 10.1055/s-0030-1254163]
 - 33 **Yang H**, Hu DL, Shu Q, Guo XD. Efficacy and adverse effects of oral propranolol in infantile hemangioma: a meta-analysis of comparative studies. *World J Pediatr* 2019; **15**: 546-558 [PMID: 31342465 DOI: 10.1007/s12519-019-00285-9]
 - 34 **Baselga E**, Dembowska-Baginska B, Przewratil P, González-Enseñat MA, Wyrzykowski D, Torrelo A, López Gutiérrez JC, Rychłowska-Pruszyńska M, de Lucas-Laguna R, Esteve-Martínez A, Roé E, Zaim M, Menon Y, Gautier S, Lebbé G, Bouroubi A, Delarue A, Voisard JJ. Efficacy of Propranolol Between 6 and 12 Months of Age in High-Risk Infantile Hemangioma. *Pediatrics* 2018; **142** [PMID: 30082451 DOI: 10.1542/peds.2017-3866]
 - 35 **Theunissen CI**, Smitt JH, van der Horst CM. Propranolol versus corticosteroids: what should be the treatment of choice in infantile hemangiomas? *Ann Plast Surg* 2015; **74**: 237-241 [PMID: 24051459 DOI: 10.1097/SAP.0b013e318299cd4e]



Published by **Baishideng Publishing Group Inc**
7041 Koll Center Parkway, Suite 160, Pleasanton, CA 94566, USA

Telephone: +1-925-3991568

E-mail: bpgoffice@wjgnet.com

Help Desk: <https://www.f6publishing.com/helpdesk>

<https://www.wjgnet.com>

