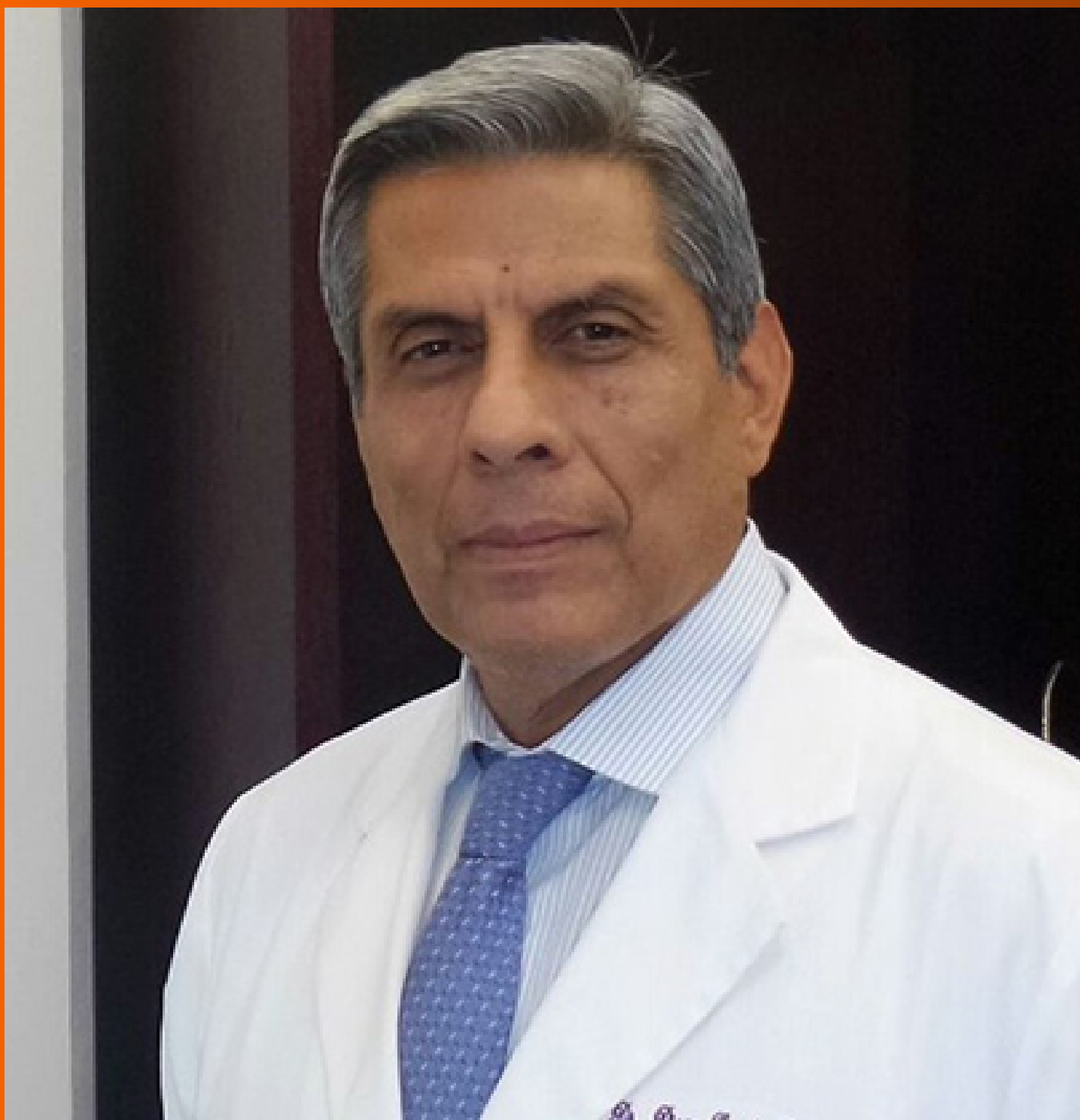


# World Journal of *Gastroenterology*

*World J Gastroenterol* 2020 November 28; 26(44): 6909-7087



### REVIEW

- 6909** Pituitary stalk interruption syndrome and liver changes: From clinical features to mechanisms  
*Wu ZY, Li YL, Chang B*

### MINIREVIEWS

- 6923** Emerging use of artificial intelligence in inflammatory bowel disease  
*Kohli A, Holzwanger EA, Levy AN*

### ORIGINAL ARTICLE

#### Basic Study

- 6929** Development and validation of a three-long noncoding RNA signature for predicting prognosis of patients with gastric cancer  
*Zhang J, Piao HY, Wang Y, Lou MY, Guo S, Zhao Y*
- 6945** Artificial intelligence based real-time microcirculation analysis system for laparoscopic colorectal surgery  
*Park SH, Park HM, Baek KR, Ahn HM, Lee IY, Son GM*
- 6963** Use of the alkaline phosphatase to prealbumin ratio as an independent predictive factor for the prognosis of gastric cancer  
*Li Y, Wang JS, Guo Y, Zhang T, Li LP*

#### Case Control Study

- 6979** Fatty liver is an independent risk factor for gallbladder polyps  
*Ahn DW, Jeong JB, Kang J, Kim SH, Kim JW, Kim BG, Lee KL, Oh S, Yoon SH, Park SJ, Lee DH*

#### Retrospective Cohort Study

- 6993** Active tuberculosis in inflammatory bowel disease patients under treatment from an endemic area in Latin America  
*Fortes FML, Boa Sorte N, Mariano VD, Andrade LD, Oliveira FA, Santos MCA, dos Santos CIN, Passos CA, Pacheco MP, Surlo VC, de Almeida NP, Fontes JAM, Pimentel AM, Rocha R, Santana GO*

#### Retrospective Study

- 7005** Hepatocellular carcinoma with tumor thrombus in bile duct: A proposal of new classification according to resectability of primary lesion  
*Zhou D, Hu GF, Gao WC, Zhang XY, Guan WB, Wang JD, Ma F*
- 7022** Prognostic value of changes in serum carcinoembryonic antigen levels for preoperative chemoradiotherapy response in locally advanced rectal cancer  
*Cheong C, Shin JS, Suh KW*

- 7036** Endoscopic pancreaticobiliary drainage with overlength stents to prevent delayed perforation after endoscopic papillectomy: A pilot study

*Wu L, Liu F, Zhang N, Wang XP, Li W*

#### Observational Study

- 7046** Prevalence and predictors of nonalcoholic fatty liver disease in South Asian women with polycystic ovary syndrome

*Shengir M, Krishnamurthy S, Ghali P, Deschenes M, Wong P, Chen T, Sebastiani G*

#### Prospective Study

- 7061** Associations between serum uric acid and hepatobiliary-pancreatic cancer: A cohort study

*Huang CF, Huang JJ, Mi NN, Lin YY, He QS, Lu YW, Yue P, Bai B, Zhang JD, Zhang C, Cai T, Fu WK, Gao L, Li X, Yuan JQ, Meng WB*

#### CASE REPORT

- 7076** COVID-19 in a liver transplant recipient: Could iatrogenic immunosuppression have prevented severe pneumonia? A case report

*Sessa A, Mazzola A, Lim C, Atif M, Pappatella J, Pourcher V, Scatton O, Conti F*

#### LETTER TO THE EDITOR

- 7085** Letter to editor 'prognostic significance of hepatic encephalopathy in patients with cirrhosis treated with Rifaximin'

*Elzubeir A, Alam SM*

**ABOUT COVER**

Editorial Board Member of *World Journal of Gastroenterology*, Dr. Diego Garcia-Compeán is a Distinguished Professor of Internal Medicine and Gastroenterology at Faculty of Medicine, Autonomous University of Nuevo Leon Mexico, where he received his degree in Medicine (1979) and completed postgraduate training in Internal Medicine (1982). He studied gastroenterology at the University of Montpellier, France (1985) and received a Master's in Medical Sciences with *cum laude* honors from the National Autonomous University of Mexico (1988). He is currently a member of the National Research System, level II, the Mexican Association of Gastroenterology, the Société Nationale Française de Gastroentérologie, the AGA, and the LAASL. His ongoing research interests involve NAFLD, eosinophilic esophagitis, liver cirrhosis, and VCE. He has published more than 75 papers in international journals, edited 3 books, and obtained national and international awards. (L-Editor: Filipodia)

**AIMS AND SCOPE**

The primary aim of *World Journal of Gastroenterology* (WJG, *World J Gastroenterol*) is to provide scholars and readers from various fields of gastroenterology and hepatology with a platform to publish high-quality basic and clinical research articles and communicate their research findings online. WJG mainly publishes articles reporting research results and findings obtained in the field of gastroenterology and hepatology and covering a wide range of topics including gastroenterology, hepatology, gastrointestinal endoscopy, gastrointestinal surgery, gastrointestinal oncology, and pediatric gastroenterology.

**INDEXING/ABSTRACTING**

The WJG is now indexed in Current Contents®/Clinical Medicine, Science Citation Index Expanded (also known as SciSearch®), Journal Citation Reports®, Index Medicus, MEDLINE, PubMed, PubMed Central, and Scopus. The 2020 edition of Journal Citation Report® cites the 2019 impact factor (IF) for WJG as 3.665; IF without journal self cites: 3.534; 5-year IF: 4.048; Ranking: 35 among 88 journals in gastroenterology and hepatology; and Quartile category: Q2.

**RESPONSIBLE EDITORS FOR THIS ISSUE**

Production Editor: Ji-Hong Liu; Production Department Director: Yun-Xiaojuan Wu; Editorial Office Director: Ze-Mao Gong.

**NAME OF JOURNAL**

*World Journal of Gastroenterology*

**ISSN**

ISSN 1007-9327 (print) ISSN 2219-2840 (online)

**LAUNCH DATE**

October 1, 1995

**FREQUENCY**

Weekly

**EDITORS-IN-CHIEF**

Andrzej S Tarnawski, Subrata Ghosh

**EDITORIAL BOARD MEMBERS**

<http://www.wjgnet.com/1007-9327/editorialboard.htm>

**PUBLICATION DATE**

November 28, 2020

**COPYRIGHT**

© 2020 Baishideng Publishing Group Inc

**INSTRUCTIONS TO AUTHORS**

<https://www.wjgnet.com/bpg/gerinfo/204>

**GUIDELINES FOR ETHICS DOCUMENTS**

<https://www.wjgnet.com/bpg/GerInfo/287>

**GUIDELINES FOR NON-NATIVE SPEAKERS OF ENGLISH**

<https://www.wjgnet.com/bpg/gerinfo/240>

**PUBLICATION ETHICS**

<https://www.wjgnet.com/bpg/GerInfo/288>

**PUBLICATION MISCONDUCT**

<https://www.wjgnet.com/bpg/gerinfo/208>

**ARTICLE PROCESSING CHARGE**

<https://www.wjgnet.com/bpg/gerinfo/242>

**STEPS FOR SUBMITTING MANUSCRIPTS**

<https://www.wjgnet.com/bpg/GerInfo/239>

**ONLINE SUBMISSION**

<https://www.f6publishing.com>



## Basic Study

# Use of the alkaline phosphatase to prealbumin ratio as an independent predictive factor for the prognosis of gastric cancer

Yang Li, Jin-Shen Wang, Yun Guo, Tao Zhang, Le-Ping Li

**ORCID number:** Yang Li 0000-0003-0984-0236; Jin-Shen Wang 0000-0001-6918-060X; Yun Guo 0000-0003-0411-4999; Tao Zhang 0000-0003-1048-4443; Le-Ping Li 0000-0002-7272-2593.

**Author contributions:** Li Y and Li LP were the guarantors and designed the study; Li Y, Wang JS and Guo Y participated in the acquisition, analysis, and interpretation of the data, and drafted the initial manuscript; Zhang T participated in the statistical analysis; Wang JS and Li LP performed the review and editing.

**Supported by** the Key Technology Research and Development Program of Shandong, No. 2017GSF221018 and No. 2017G006007.

**Institutional review board statement:** The study was reviewed and approved by the Shandong Provincial Hospital Institutional Review Board, SWYX: NO. 2020-069.

**Conflict-of-interest statement:** The authors declare no conflicts of interest.

**Data sharing statement:** No additional data are available.

**Yang Li, Jin-Shen Wang, Le-Ping Li,** Departments of Gastrointestinal, Shandong Provincial Hospital, Cheeloo College of Medicine, Shandong University, Jinan 250021, Shandong Province, China

**Yun Guo,** Center for Reproductive Medicine, Cheeloo College of Medicine, Jinan 250012, Shandong Province, China

**Tao Zhang,** Department of Biostatistics, School of Public Health, Shandong University, Jinan 250012, Shandong Province, China

**Corresponding author:** Le-Ping Li, PhD, Professor, Surgeon, Departments of Gastrointestinal, Shandong Provincial Hospital, Cheeloo College of Medicine, Shandong University, No. 324 Jingwu Road, Jinan 250021, Shandong Province, China. [lepingdoctor@126.com](mailto:lepingdoctor@126.com)

## Abstract

### BACKGROUND

Gastric cancer (GC) is characterized by a low 5-year survival rate. The prognosis is still not satisfactory although it has significantly improved due to developments in medicine. Thus, the identification of more efficient indices for the evaluation of GC prognosis is required. We propose, for the first time, that the alkaline phosphatase (ALP) to prealbumin (PA) ratio (APR) can be used as an independent prognostic factor in GC.

### AIM

To evaluate the prognostic value the APR in GC.

### METHODS

According to the exclusion strategy, we collected the preoperative serologic examination results and clinical information of 409 GC patients treated in Shandong Provincial Hospital from January to December, 2016. By calculating the APR, the neutrophil and lymphocyte ratio (NLR), C-reactive protein (CRP) and albumin (ALB) ratio, platelet and lymphocyte ratio, lymphocyte and monocyte ratio, and the relationship with clinical information, we verified the role of preoperative APR ratio in the prognosis of GC. In addition, we used a Cox model combined with the APR and tumor stage to demonstrate its efficacy in assessing the prognosis of GC patients.

### RESULTS

**Open-Access:** This article is an open-access article that was selected by an in-house editor and fully peer-reviewed by external reviewers. It is distributed in accordance with the Creative Commons Attribution NonCommercial (CC BY-NC 4.0) license, which permits others to distribute, remix, adapt, build upon this work non-commercially, and license their derivative works on different terms, provided the original work is properly cited and the use is non-commercial. See: <http://creativecommons.org/licenses/by-nc/4.0/>

**Manuscript source:** Unsolicited manuscript

**Specialty type:** Gastroenterology and hepatology

**Country/Territory of origin:** China

**Peer-review report's scientific quality classification**

Grade A (Excellent): 0  
Grade B (Very good): B  
Grade C (Good): C  
Grade D (Fair): 0  
Grade E (Poor): 0

**Received:** June 13, 2020

**Peer-review started:** June 13, 2020

**First decision:** September 12, 2020

**Revised:** September 21, 2020

**Accepted:** October 13, 2020

**Article in press:** October 13, 2020

**Published online:** November 28, 2020

**P-Reviewer:** Ali FE, Ooi L

**S-Editor:** Zhang H

**L-Editor:** Webster JR

**P-Editor:** Li JH



Preoperative APR was an independent prognostic factor for GC. The median age of patients in the APR-high group was greater compared with that in the APR-low group. Patients with a higher APR had a more advanced clinical stage, higher neutrophil to lymphocyte, CRP to ALB, and platelet to lymphocyte ratios, but a lower lymphocyte to monocyte ratio ( $P < 0.05$ ). The APR-high group also had higher glycoprotein antigen 199 and carbohydrate antigen 125 levels than the APR-low group ( $P < 0.05$ ). Median overall survival and disease-free survival were significantly longer in the APR-low group than in the APR-high group. In addition, a Cox model based on the APR and tumor stage was more effective in evaluating the prognosis of patients than models based on stage alone or stage plus the NLR.

## CONCLUSION

A higher APR is an independent and negative prognostic factor for GC. The prognosis of GC can be better evaluated using a Cox model based on the APR and stage.

**Key Words:** Gastric cancer; Prognosis; Alkaline phosphatase; Prealbumin; Evaluating efficiency

©The Author(s) 2020. Published by Baishideng Publishing Group Inc. All rights reserved.

**Core Tip:** We are the first to propose that the alkaline phosphatase (ALP) to prealbumin (PA) ratio (APR) can be used as an independent prognostic factor in gastric cancer (GC). By comparing clinical information in different groups, we found that a high APR predicted worse prognosis. In addition, the model based on the APR and stage showed better efficiency than other models in evaluating the prognosis of GC.

**Citation:** Li Y, Wang JS, Guo Y, Zhang T, Li LP. Use of the alkaline phosphatase to prealbumin ratio as an independent predictive factor for the prognosis of gastric cancer. *World J Gastroenterol* 2020; 26(44): 6963-6978

**URL:** <https://www.wjgnet.com/1007-9327/full/v26/i44/6963.htm>

**DOI:** <https://dx.doi.org/10.3748/wjg.v26.i44.6963>

## INTRODUCTION

Gastric cancer (GC) is a malignant tumor with a high mortality and recurrence rate worldwide<sup>[1]</sup>. Although the prognosis of GC has significantly improved due to technological advancements, it is still not satisfactory<sup>[2,3]</sup>. Hence, researchers are conducting studies with the aim of identifying effective and independent prognostic factors for the evaluation of postoperative survival among GC patients<sup>[4,5]</sup>.

Alkaline phosphatase (ALP) is widely distributed in the human liver, bone, intestine, kidney, placenta, and tissues. Clinically, it is mainly used for the diagnosis and differential diagnosis of skeletal and hepatobiliary system diseases, particularly those characterized by jaundice<sup>[6,7]</sup>. Patients with some tumors have elevated serum ALP levels<sup>[8,9]</sup>. Moreover, ALP levels can be used as an independent prognostic factor for GC, with preoperative high ALP levels being a poor prognostic factor. However, there are only a few articles supporting these findings<sup>[10-12]</sup>.

Prealbumin (PA) is synthesized by hepatocytes and is mainly used as a sensitive nutritional protein index in the diagnosis and differential diagnosis of hepatopathy and nephropathy<sup>[13]</sup>. Moreover, it is used as a nutritional index to evaluate the prognosis of cancer patients<sup>[14,15]</sup>. Furthermore, previous studies have shown that patients with low preoperative PA levels have poor prognosis<sup>[16,17]</sup>.

However, there are no relevant reports on the significance of the serum ALP to PA ratio (APR) on the prognosis of GC. This is the first study to propose the use of the preoperative APR as an independent factor for the evaluation of GC prognosis.



## MATERIALS AND METHODS

### *Study population and data collection*

A total of 985 patients with different types of gastric tumors underwent treatment. Of these patients, 409 GC patients were included in the study, from January 2016 to December 2016. The diagnosis of GC was mainly based on esophagogastroduodenoscopy, biopsy specimen analysis, computed tomography (CT) scan, or magnetic resonance imaging (MRI) findings. Of the 409 patients, 353 underwent surgery, and 56 patients who experienced metastasis refused surgery and chose other treatment methods, such as radiotherapy or chemotherapy.

Based on the patients' medical history and relevant examinations such as CT, MRI, positron emission tomography or laboratory tests, the exclusion criteria were as follows: (1) Patients with other types of gastric tumors, such as gastric stromal tumor, lymphoma and so on; (2) Patients with hepatitis; (3) Pregnant women; (4) Those with other primary tumors in addition to gastric lesions; (5) Those with a recent fracture or those recovering from a fracture; (6) Those undergoing chemoradiotherapy or other treatments affecting the serological examination results within 1 mo before hospitalization; (7) Those taking drugs significantly affecting the ALP level within a week before the collection of blood samples; and (8) Patients with significant renal or lung problems.

### *Clinical characteristics of the participants*

The tumor stage in each patient was based on pathology and was reclassified according to the 8<sup>th</sup> edition of the American Joint Committee on Cancer/Union for International Cancer Control<sup>[18]</sup>. Detailed data on clinical characteristics, including age, gender, tumor-node-metastasis (TNM) stage, degree of differentiation, human epidermal growth factor receptor 2 (HER-2) status, and tumor markers, including glycoprotein antigen 199 (CA-199) (U/L), carbohydrate antigen 125 (CA-125) (U/L), and carcinoembryonic antigen (CEA) (ng/mL), were collected. The degree of differentiation and HER-2 status were identified based on biopsy and immunohistochemistry findings. The results of the patients' preoperative examinations, such as routine blood and liver function tests, were also collected. The ALP (U/L) to PA (mg/L) ratio (APR), neutrophil ( $10^9$ /L) to lymphocyte ( $10^9$ /L) ratio (NLR)<sup>[19]</sup>, C-reactive protein (CRP) (mg/L) to albumin (g/L) ratio (CAR), platelet ( $10^9$ /L) to lymphocyte ratio (PLR), and lymphocyte to monocyte ( $10^9$ /L) ratio (LMR) in each patient were calculated based on the relevant serum concentrations using blood samples. For comparison, we considered stages 1 and 2 as early stage and stages 3 and 4 as advanced stages. The same division strategy was also adopted for T and N stages. The degree of differentiation was categorized as low, moderate-low, moderate, high-moderate, and high differentiation. Data on overall survival (OS) and disease-free survival (DFS) after treatment were recorded.

### *Statistical analyses*

Patients were divided into two groups according to the best APR cut-off value, which was calculated using R software (version 3.6.1). Differences in continuous variables between the two groups were evaluated using the Mann-Whitney *U* test. The chi-square test was used to compare categorical variables. The Kaplan-Meier method was used to assess survival rates, and the log-rank test was utilized for comparison. A multivariate Cox regression analysis was performed to identify factors independently associated with survival. Statistical analyses were performed using the statistical package for the Social Sciences software (version 23.0). GraphPad Prism 8, Photoshop, and R software (version 3.6.1) were used for analyses.

## RESULTS

### *Clinical characteristics of the participants*

The number of patients for each index is shown in Table 1. Missing APR and CAR values were attributed to the missing PA and CRP values. Missing data on T and N stages were mainly attributed to unresectable tumor or lack of surgery. Thus, the exact T and N stage could not be identified. Missing data on differentiation and HER-2 status was attributed to a lack of relevant immunohistochemical pathology results.

According to the optimal cutoff APR value (0.388), patients were divided into the APR-high ( $n = 207$ ) group and the APR-low ( $n = 199$ ) group (Table 2). There were

**Table 1 Values and missing values of patients according to each characteristic, *n* (%)**

All patients ( <i>n</i> = 409)		
Characteristics	Values	Missing values
Age	409 (100)	0 (0)
Gender	409 (100)	0 (0)
Stage	409 (100)	0 (0)
T	369 (90.2)	40 (9.8)
N	365 (89.2)	44 (10.8)
M	409 (100)	0 (0)
Differentiation	330 (80.7)	79 (19.3)
HER-2	316 (77.3)	93 (22.7)
APR	406 (99.3)	3 (0.7)
NLR	409 (100)	0 (0)
CAR	399 (97.6)	10 (2.4)
PLR	409 (100)	0 (0)
LMR	409 (100)	0 (0)
CEA	337 (82.4)	72 (17.6)
CA-199	333 (81.4)	76 (18.6)
CA-125	312 (76.3)	97 (23.7)

The missing values show the number of patients without relevant characteristics. T: T stage; N: N stage; M: M stage; HER-2: Human epidermal growth factor receptor 2; APR: Alkaline phosphatase to prealbumin ratio; NLR: Neutrophil to lymphocyte ratio; CAR: C-reactive protein to albumin ratio; PLR: Platelet to lymphocyte ratio; LMR: Lymphocyte to monocyte ratio; CEA: Carcinoembryonic antigen; CA-199: Glycoprotein antigen 199; CA-125: Carbohydrate antigen 125.

significant differences in terms of age, gender, and TNM stage between the two groups. Patients in the APR-high group were older than those in the APR-low group (average age: 62.1 years *vs* 58.7 years,  $P < 0.05$ ), and the proportion of female patients was also higher (26.1% *vs* 17.6%,  $P = 0.0385$ ). In addition, the proportion of patients with advanced disease (stages 3 and 4) was higher in the APR-high group than in the APR-low group (76.3% *vs* 47.2%,  $P < 0.05$ ). In terms of T stage, the proportion of patients with T3 and T4 was higher in the APR-high group than in the APR-low group (84.0% *vs* 54.9%,  $P < 0.05$ ). In terms of regional lymph node metastasis (N stage), the proportion of patients with N2 and N3 was also significantly higher in the APR-high group than in the APR-low group (55.2% *vs* 32.4%,  $P < 0.05$ ). The comparison of M stage between the two groups was also significant, and approximately 18.4% of patients in the APR-high group presented with distant metastasis. There was no significant difference in terms of tumor differentiation and HER-2 status between the two groups. Overall these results showed that patients with a higher preoperative APR presented with a more advanced clinical stage of the disease.

### Comparison of NLR, CAR, PLR, LMR, and tumor marker levels

We also compared the NLR, CAR, PLR, LMR, and tumor marker levels between the two groups, which are considered important prognostic factors for GC (Table 3)<sup>[19-23]</sup>. We found that the median NLR, CAR, and PLR in the APR-high group were higher than those in the APR-low group (2.09 *vs* 1.87, 0.07 *vs* 0.02, 162.5 *vs* 133.5,  $P < 0.05$ ), and the LMR of the APR-high group was lower than that of the APR-low group (3.79 *vs* 4.57,  $P < 0.05$ ). Regarding tumor markers, patients in the APR-high group had higher median CA-199 (13.74 *vs* 11.52,  $P = 0.0374$ ) and CA-125 (12.76 *vs* 10.14,  $P = 0.002$ ) levels than those in the APR-low group. The CEA level in the APR-high group was also higher than that in the APR-low group. However, the difference was not significant (median: 3.0 *vs* 2.42,  $P = 0.053$ ).

These results showed that GC patients with a high APR had higher inflammatory indices, such as NLR and PLR, and tumor marker levels, which indicated a worse prognosis.



**Table 2 Clinical characteristics of patients in the alkaline phosphatase to prealbumin ratio-low and -high groups, *n* (%)**

Characteristics	APR-low ( <i>n</i> = 199)	APR-high ( <i>n</i> = 207)	<i>P</i> Value
Age (yr)			
< 60	94 (47.2)	71 (34.3)	0.0080 <sup>b</sup>
≥ 60	105 (52.8)	136 (65.7)	
Average age	58.7	62.1	
Gender			
Female	35 (17.6)	54 (26.1)	0.0385 <sup>a</sup>
Male	164 (82.4)	153 (73.9)	
Stage			
Stage 1	70	20	< 0.005 <sup>b</sup>
Stage 2	35	29	
Stage 3	75	120	
Stage 4	19	38	
Stage 1 + 2	105 (52.8)	49 (23.7)	< 0.005 <sup>b</sup>
Stage 3 + 4	94 (47.2)	158 (76.3)	
T stage			
T1	57	19	< 0.005 <sup>b</sup>
T2	29	9	
T3	9	19	
T4	96	128	
T1 + 2	86 (45.1)	28 (16.0)	< 0.005 <sup>b</sup>
T3 + 4	105 (54.9)	147 (84.0)	
N stage			
N0	90	46	< 0.005 <sup>b</sup>
N1	37	32	
N2	30	35	
N3	31	61	
N0 + 1	127 (67.6)	78 (44.8)	< 0.005 <sup>b</sup>
N2 + 3	61 (32.4)	96 (55.2)	
M stage			
M0	181 (91.0)	169 (81.6)	0.0065 <sup>b</sup>
M1	18 (9.0)	38 (18.4)	
Differentiation			
L/ML	98	108	0.1378
M	62	45	
H/HM	9	5	
HER-2			
0	101	94	0.9450
1	26	28	
2	23	24	
3	8	9	

<sup>a</sup> $P < 0.05$ .<sup>b</sup> $P < 0.01$ . APR: Alkaline phosphatase to prealbumin ratio; HER-2: Human epidermal growth factor receptor 2; L: Indicates low differentiation; ML: Moderate-low differentiation; M: Moderate differentiation; HM: High-moderate differentiation; H: High differentiation.**Table 3 Median neutrophil and lymphocyte ratio, C-reactive protein to albumin ratio, platelet to lymphocyte ratio, lymphocyte to monocyte ratio, and tumor marker levels**

Characteristics	APR-Low group	APR-High group	P Value
NLR	1.87	2.09	< 0.005 <sup>b</sup>
CAR	0.02	0.07	< 0.005 <sup>b</sup>
PLR	133.50	162.50	< 0.005 <sup>b</sup>
LMR	4.57	3.79	< 0.005 <sup>b</sup>
CEA	2.42	3.00	0.053
CA-199	11.52	13.74	0.0374 <sup>a</sup>
CA-125	10.14	12.76	0.0020 <sup>b</sup>

<sup>a</sup> $P < 0.05$ .<sup>b</sup> $P < 0.01$ . APR: Alkaline phosphatase to prealbumin ratio; NLR: Neutrophil to lymphocyte ratio; CAR: C-reactive protein to albumin ratio; PLR: Platelet to lymphocyte ratio; LMR: Lymphocyte to monocyte ratio; CEA: Carcinoembryonic antigen; CA-199: Glycoprotein antigen 199; CA-125: Carbohydrate antigen 125.

### Association between APR and survival

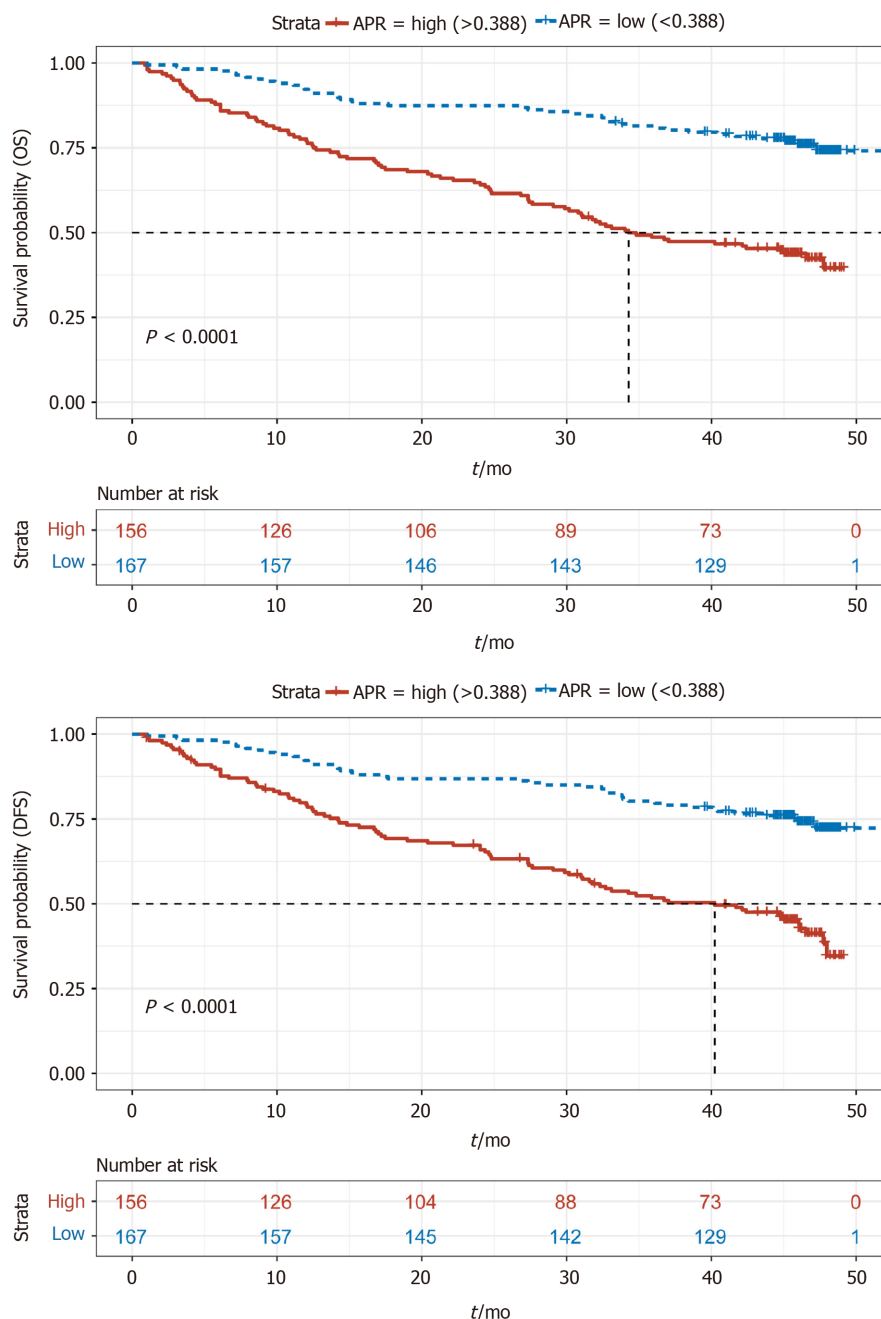
A total of 83 patients were lost to or refused follow-up. Kaplan–Meier (KM) survival analysis of OS and DFS in the remaining 323 patients was performed, and the results showed that OS and DFS in the APR-high group were significantly poorer than those in the APR-low group (Figure 1). In addition, KM survival analysis was also performed according to NLR, CAR, PLR, and LMR. The results showed that the group with low NLR, CAR, and PLR had better survival than the group with high NLR, CAR, and PLR (Figures 2A–C). However, patients with a low LMR had poorer survival than those with a high LMR (Figure 2D). These results were consistent with those of other studies showing the effect of NLR, CAR, PLR, and LMR on GC<sup>[24]</sup>.

### Multivariate survival analysis

A multivariate survival analysis was conducted to identify independent prognostic factors by converting the indices to categorical variables (stage 1 + 2/stage 3 + 4; age < 60/≥ 60; APR, NLR, CAR, PLR, and LMR grouped with the category used in the KM analysis). Following multivariate analysis, and excluding stage, we found that the APR was an independent prognostic factor for both OS (HR: 0.4; 95%CI: 0.31–0.70;  $P < 0.01$ ) and DFS (HR: 0.51; 95%CI: 0.34–0.76;  $P < 0.01$ ) (Figure 3A). Furthermore, NLR was an independent prognostic factor for DFS (HR: 0.57; 95%CI: 0.37–0.89;  $P = 0.01$ ). The function of other indices was not significant.

Subsequently, using different independent indicators, we constructed Cox regression models and analyzed the receiver operating characteristic curve to compare their efficiency. All patients were randomly divided by R software (seed = 123) into a training ( $n = 150$ ) and a validation group ( $n = 165$ ). As shown in Figure 3B, the efficiency of the model with APR and stage was better than that of stage alone for OS [area under the curve (AUC)-OS: Training 0.877 vs 0.84, validation 0.846 vs 0.794]. On the other hand, the AUC of NLR and stage model for DFS was better than that of stage alone, but poorer than the model with APR and stage (AUC-DFS: Training 0.876 vs 0.858 vs 0.852, validation 0.836 vs 0.813 vs 0.796).

Patients were divided into two groups according to the risk score established by the APR and stage and, as shown in Figure 4, the survival time of the high-risk group was significantly shorter than that of the low-risk group. Furthermore, the number of deaths was significantly higher than that in the low-risk group (Figure 4). Overall, the results indicated that the APR is an independent prognostic factor for GC, and that the combination with stage could help us make a more accurate judgment of the prognosis of patients.



**Figure 1** Comparison of overall survival and disease-free survival between the alkaline phosphatase to prealbumin ratio-low and -high groups. APR: Alkaline phosphatase to prealbumin ratio.

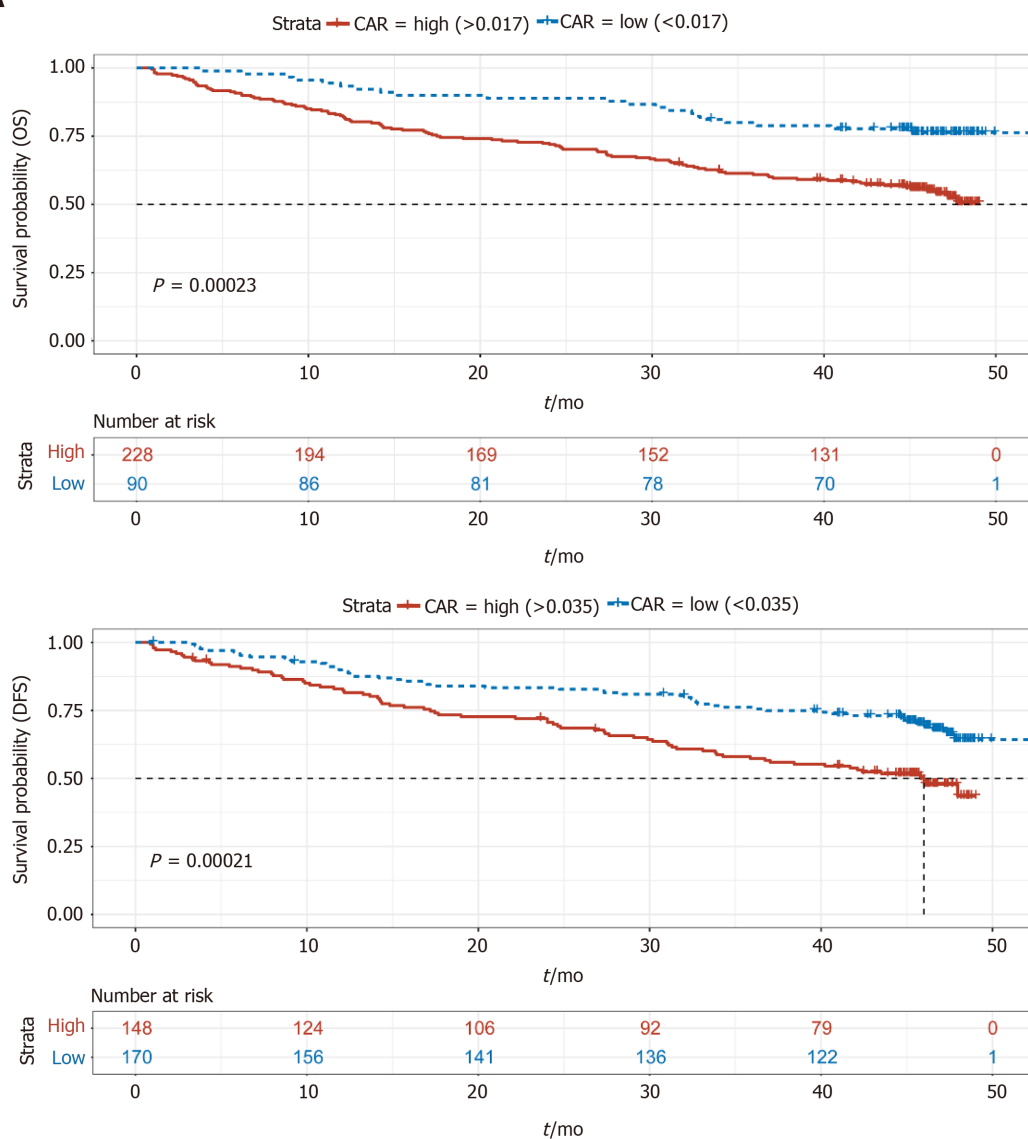
## DISCUSSION

GC has a high recurrence and mortality rate, and its 5-year survival rate is still not ideal. Thus, there is a need for new indicators that could be used to evaluate patient outcomes.

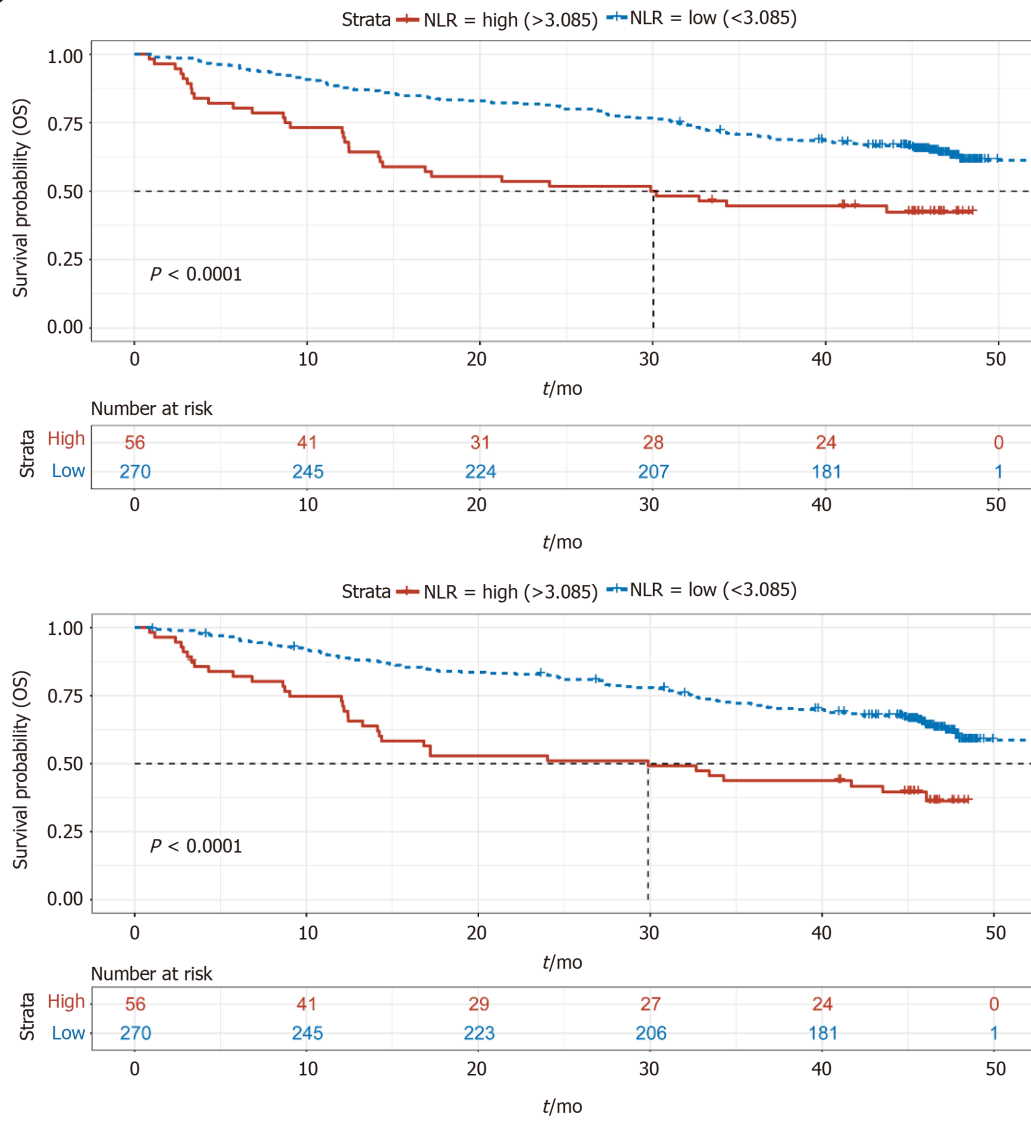
ALP is widely distributed in the human liver, bone, intestine, kidney, and placenta, and its levels are significantly increased in some individuals, such as those with liver diseases, pregnant women, and those with fractures. Previous studies have also shown that patients with tumors, such as bone, colorectal, and breast tumors also have increased serum ALP levels<sup>[25-28]</sup>. Furthermore, some studies have indicated that GC patients with a higher preoperative ALP level may have a worse prognosis. Although only a few articles support this notion<sup>[10,29]</sup>, this result suggests that ALP may have a potential role in the evaluation of tumor prognosis, including GC.

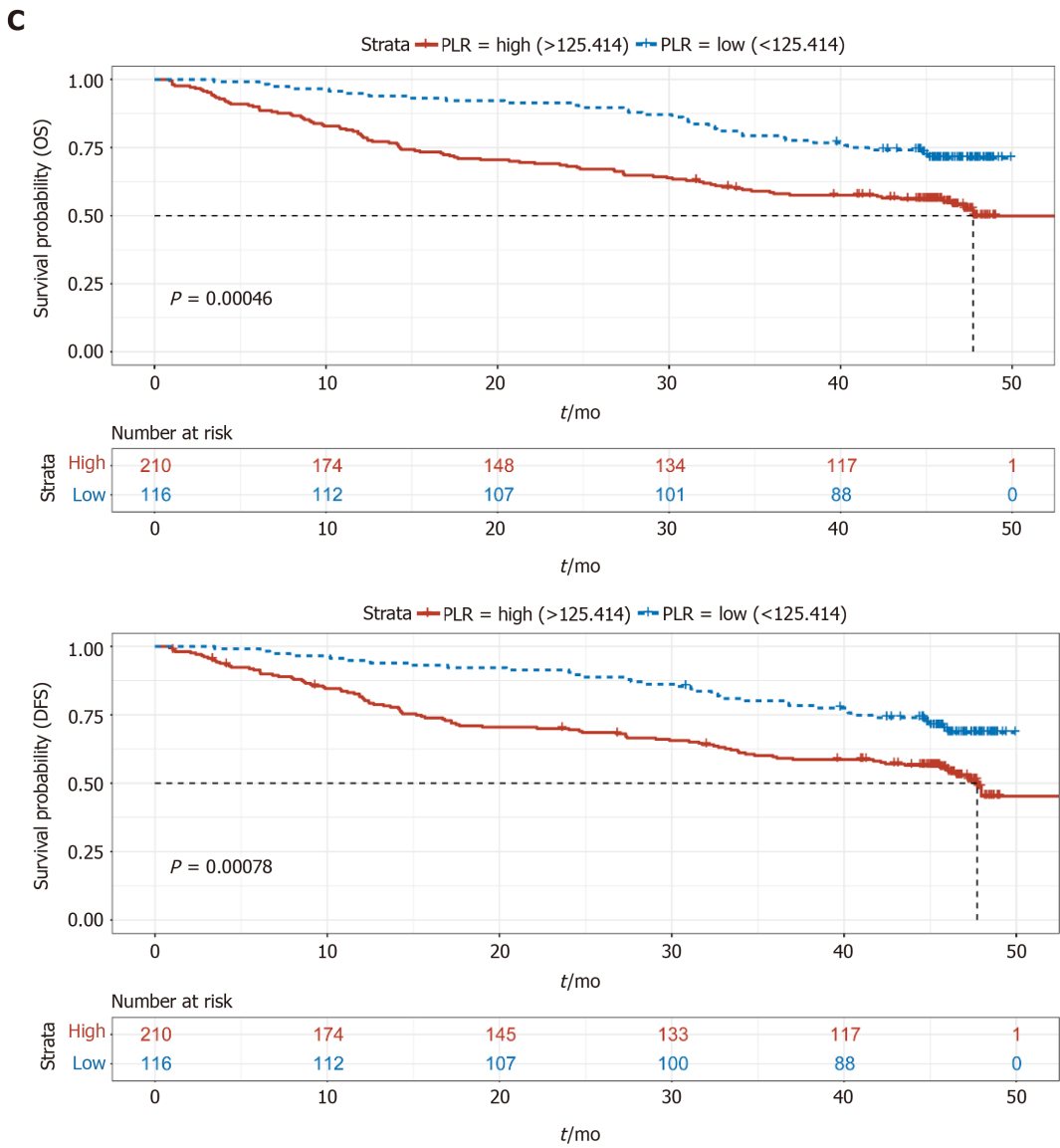
PA is a sensitive nutrient protein index, and its concentration in plasma is helpful for the evaluation of nutritional status and liver function. In addition, PA can also transport thyroxine and vitamin A. It has thymic hormone property, which can

**A**

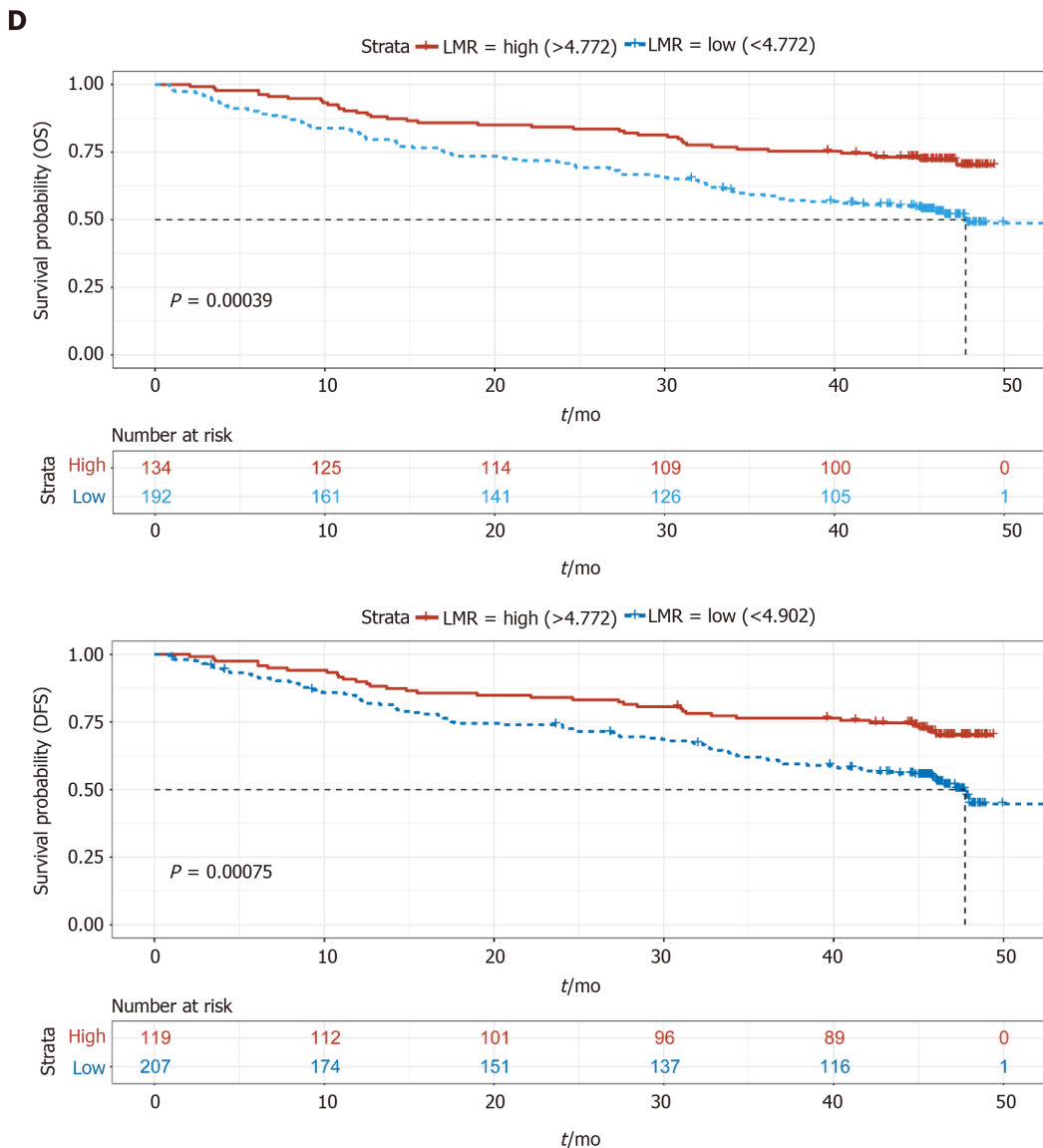


**B**





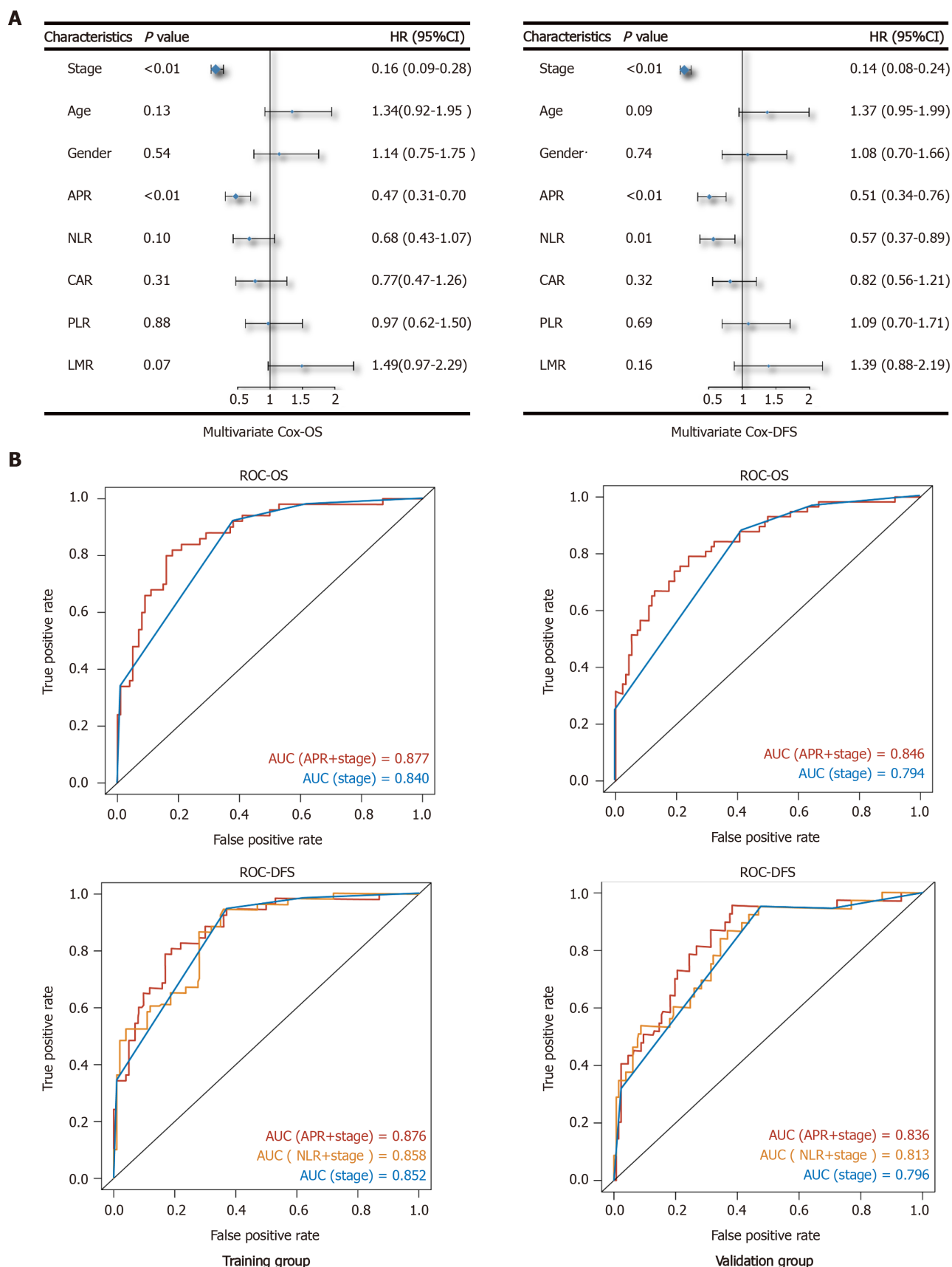




**Figure 2 Comparison of overall survival and disease-free survival between the two groups in terms of C-reactive protein to albumin ratio, neutrophil and lymphocyte ratio, platelet to lymphocyte ratio, and lymphocyte to monocyte ratio.** A: Comparison of overall survival (OS) and disease-free survival (DFS) between the C-reactive protein to albumin ratio (CAR)-low and CAR-high groups; B: Comparison of OS and DFS between the neutrophil and lymphocyte ratio (NLR)-low and NLR-high groups; C: Comparison of OS and DFS between the platelet to lymphocyte ratio (PLR)-low and PLR-high groups; D: Comparison of OS and DFS between the lymphocyte to monocyte ratio (LMR)-low and LMR-high groups. CAR: C-reactive protein to albumin ratio; NLR: Neutrophil and lymphocyte ratio; PLR: Platelet to lymphocyte ratio; LMR: Lymphocyte to monocyte ratio.

enhance the body's immune response by promoting the maturation of lymphocytes<sup>[13,14,30,31]</sup>. The metabolism in tumor patients is accelerated, and thus their nutritional status becomes extremely poor, particularly in advanced-stage cancers. In this context, the concentration and function of PA also decreases, negatively affecting the ability of the body to fight against the tumor. Thus, PA is also an important index for the evaluation of prognosis in cancer patients<sup>[16]</sup>. In view of the abovementioned points, we calculated the APR in order to assess its effect on the prognosis of GC.

In our study, we first proposed the hypothesis that the APR could be an important factor in the evaluation of GC prognosis. After excluding patients with factors that could significantly affect the APR, we collected data on the preoperative serological examination results of 409 patients with GC, and the differences in clinical characteristics and prognostic indicators were compared between the APR-high and APR-low groups. We found that the APR-high group had deeper tumor infiltration and more extensive lymph node metastasis than the APR-low group. There was a larger proportion of patients with distant metastasis in the APR-high group than in the APR-low group. In addition, the average age of the APR-high group was relatively higher than that of the APR-low group, and there was a higher proportion of female patients in the APR-high group than in the APR-low group.



**Figure 3 Multivariate Cox analysis and evaluating efficiency of indices.** A: Shows the results of multivariate Cox analysis of overall survival and disease-free survival by forest plot; B: Shows the comparison of evaluating efficiency among different Cox models. OS: Overall survival; DFS: Disease-free survival; AUC: Area under the curve; ROC: Receiver operating characteristic.

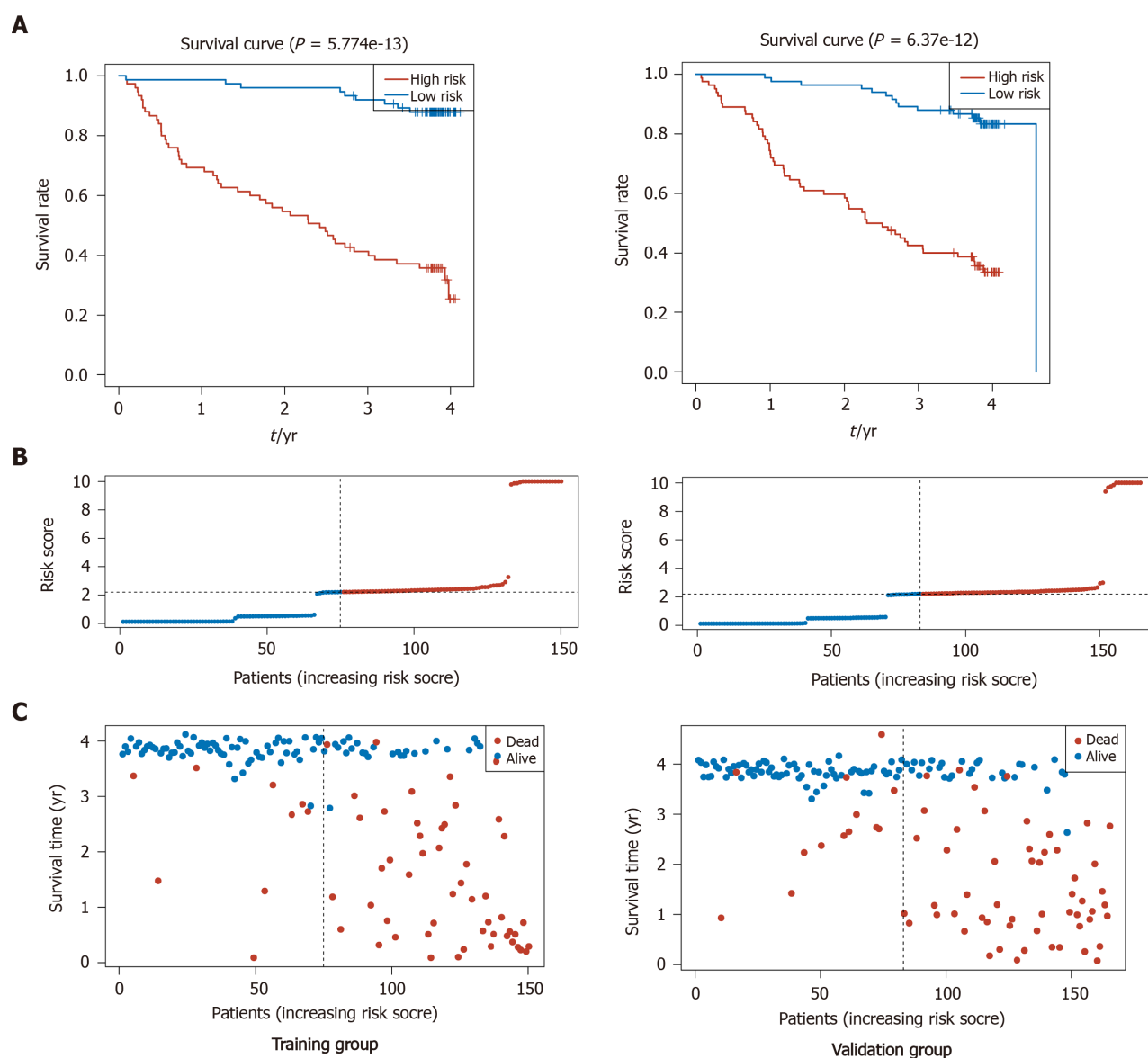
The NLR, CAR, PLR, and LMR, which were assessed and considered as important factors for evaluating the prognosis of GC, were compared. These indicators mainly reflect the degree of the inflammatory response in the body according to the proportion of inflammatory cells, while CAR reflects both the inflammatory response of the body and nutritional status. Previous studies have shown that GC patients with high NLR, PLR, and CAR and low LMR have a poorer prognosis<sup>[20,22,23]</sup>. In our study, the APR-high group had a worse prognosis than the APR-low group, and patients in this group also presented with a higher NLR, CAR, PLR, and lower LMR, which was consistent with previous studies. Furthermore, APR showed the same trend in the evaluation of GC prognosis compared with NLR, CAR, and PLR, while, LMR showed the opposite trend.

As observed by multivariate Cox regression, the effect of APR was more obvious than that of NLR, CAR, PLR, and LMR in evaluating the prognosis of GC. The evaluating efficiency of APR and stage model was better than that of stage alone or the NLR plus stage model. APR is easy to obtain by preoperative serum examination, and when combined with accurate clinical stage obtained from pathological diagnosis after surgery, the evaluating efficiency of the patients' prognosis is more accurate. Surgeons make a preliminary judgment on the clinical prognosis of patients through imaging examination. This, combined with the APR, can help us make a more accurate and efficient judgement during the general assessment of the tumor and patient prognosis before surgery.

Although previous studies have shown that ALP can be used to evaluate the prognosis of GC, the mechanism behind it remains unclear. ALP is mainly used for the diagnosis of liver diseases, and the liver is the most common site of distant metastasis in advanced-stage GC<sup>[32,33]</sup>. Patients with GC who have a worse clinical stage may have a higher risk of liver damage<sup>[34]</sup>. However, even in cases where serum ALP is within the normal range, it does not indicate that the liver is healthy and without damage. In fact, it is possible that tumor or inflammatory mediators, or even circulating tumor cells, have damaged the liver. PA, on the other hand, has a high sensitivity in detecting the nutritional status of the body. Thus, the ratio of the ALP and PA indices can, to some extent, reveal the physical status of GC patients. In contrast, the NLR and other inflammatory indicators mainly reflect the inflammatory state of the body and thus, when there is no obvious inflammatory response in the body, the sensitivity of these indicators may be significantly reduced. However, as the APR is not an absolute inflammatory indicator, it is less affected by the condition. Hence, the sensitivity and predictive efficacy of APR are higher than that of NLR or other inflammatory indicators.

## CONCLUSION

In conclusion, the APR can be used as an independent prognostic factor for GC, and its efficiency is higher than that of NLR and other inflammatory indicators. Furthermore, the combination of the APR and clinical stage can help us improve the accuracy in evaluating the condition of patients. This also allows for the establishment of relevant treatment plans to improve the prognosis of patients. In order to confirm the role of the APR in the diagnosis and prognosis of GC future studies must include a larger sample size.



**Figure 4** Survival status of the model estimated by stage and alkaline phosphatase to prealbumin ratio. A: Risk score plot of training and validation groups; B: Status plot of training and validation groups; C: Receiver operating characteristic curve of the model in training and validation groups.

## ARTICLE HIGHLIGHTS

### Research background

Gastric cancer (GC) is a disease with a high mortality and recurrence rate, and its prognosis is still not ideal. Thus, in order to help doctors to develop and modify treatment strategies, it is important to identify new prognostic factors.

### Research motivation

Alkaline phosphatase (ALP) is mainly used for the diagnosis of liver and kidney diseases but rarely for GC. Prealbumin (PA) is a nutritional indicator of the body which has been widely studied. This is the first report to propose the use of the preoperative ratio of ALP to PA, referred to as the ALP to PA ratio (APR), as an independent factor for the evaluation of the prognosis of GC.

### Research objectives

To investigate the predictive effect of the APR in the prognosis of GC.

### Research methods

After excluding those who did not meet the inclusion criteria, we collected the hematological examination results of 409 GC patients upon admission from January to

December, 2016. We then compared the clinical characteristics and survival time of patients in order to evaluate the efficiency of the APR in GC prognosis.

### Research results

Patients with a higher preoperative APR had more advanced clinical stage, a higher neutrophil and lymphocyte ratio (NLR), C-reactive protein, platelet to lymphocyte ratio, glycoprotein antigen 199, and carbohydrate antigen 125 ( $P < 0.05$ ). In addition, median overall survival and disease-free survival were significantly poorer in the APR-high group than in the APR-low group. The Cox model based on the APR and stage was more effective in evaluating the prognosis of patients than models based on stage alone or stage plus NLR.

### Research conclusions

Preoperative APR can be an independent factor for the prognosis of GC, with a higher APR indicating a worse prognosis.

### Research perspectives

The APR can be easily acquired and calculated. Thus, by facilitating a more comprehensive judgment of patient prognosis, and combined with other tests, it can help surgeons develop and adjust treatment plans.

## ACKNOWLEDGEMENTS

All clinical and follow-up information on each patient was collected by our authors. We especially thank Professor Tao Zhang and Miss Yun Guo for their contribution to our study.

## REFERENCES

- 1 Karimi P, Islami F, Anandasabapathy S, Freedman ND, Kamangar F. Gastric cancer: descriptive epidemiology, risk factors, screening, and prevention. *Cancer Epidemiol Biomarkers Prev* 2014; **23**: 700-713 [PMID: 24618998 DOI: 10.1158/1055-9965.EPI-13-1057]
- 2 Ferlay J, Soerjomataram I, Dikshit R, Eser S, Mathers C, Rebelo M, Parkin DM, Forman D, Bray F. Cancer incidence and mortality worldwide: sources, methods and major patterns in GLOBOCAN 2012. *Int J Cancer* 2015; **136**: E359-E386 [PMID: 25220842 DOI: 10.1002/ijc.29210]
- 3 Jung KW, Won YJ, Kong HJ, Oh CM, Shin A, Lee JS. Survival of Korean adult cancer patients by stage at diagnosis, 2006-2010: national cancer registry study. *Cancer Res Treat* 2013; **45**: 162-171 [PMID: 24155674 DOI: 10.4143/crt.2013.45.3.162]
- 4 Machlowska J, Maciejewski R, Sitarz R. The Pattern of Signatures in Gastric Cancer Prognosis. *Int J Mol Sci* 2018; **19** [PMID: 29867026 DOI: 10.3390/ijms19061658]
- 5 Suzuki A, Katoh H, Komura D, Kakiuchi M, Tagashira A, Yamamoto S, Tatsuno K, Ueda H, Nagae G, Fukuda S, Umeda T, Totoki Y, Abe H, Ushiku T, Matsuura T, Sakai E, Ohshima T, Nomura S, Seto Y, Shibata T, Rino Y, Nakajima A, Fukayama M, Ishikawa S, Aburatani H. Defined lifestyle and germline factors predispose Asian populations to gastric cancer. *Sci Adv* 2020; **6**: eaav9778 [PMID: 32426482 DOI: 10.1126/sciadv.aav9778]
- 6 Kaplan MM. Alkaline phosphatase. *Gastroenterology* 1972; **62**: 452-468 [PMID: 4551808 DOI: 10.1016/S0016-5085(72)80154-9]
- 7 Siller AF, Whyte MP. Alkaline Phosphatase: Discovery and Naming of Our Favorite Enzyme. *J Bone Miner Res* 2018; **33**: 362-364 [PMID: 28727174 DOI: 10.1002/jbmr.3225]
- 8 Yao D, Yang S, Wang Y, Bian K, Yang W, Wang D, Zhang B. An ALP-activatable and mitochondria-targeted probe for prostate cancer-specific bimodal imaging and aggregation-enhanced photothermal therapy. *Nanoscale* 2019; **11**: 6307-6314 [PMID: 30882834 DOI: 10.1039/c9nr00913b]
- 9 Rao SR, Snaith AE, Marino D, Cheng X, Lwin ST, Orriss IR, Hamdy FC, Edwards CM. Tumour-derived alkaline phosphatase regulates tumour growth, epithelial plasticity and disease-free survival in metastatic prostate cancer. *Br J Cancer* 2017; **116**: 227-236 [PMID: 28006818 DOI: 10.1038/bjc.2016.402]
- 10 Namikawa T, Ishida N, Tsuda S, Fujisawa K, Munekage E, Iwabu J, Munekage M, Uemura S, Tsujii S, Tamura T, Yatabe T, Maeda H, Kitagawa H, Kobayashi M, Hanazaki K. Prognostic significance of serum alkaline phosphatase and lactate dehydrogenase levels in patients with unresectable advanced gastric cancer. *Gastric Cancer* 2019; **22**: 684-691 [PMID: 30417313 DOI: 10.1007/s10120-018-0897-8]
- 11 Wu YJ, Wang Y, Qin R, Cao ZY, Zhao HZ, Du XH, Yang B. Serum Alkaline Phosphatase Predicts Poor Disease-Free Survival in Patients Receiving Radical Gastrectomy. *Med Sci Monit* 2018; **24**: 9073-9080 [PMID: 30550533 DOI: 10.12659/MSM.910480]
- 12 Lim SM, Kim YN, Park KH, Kang B, Chon HJ, Kim C, Kim JH, Rha SY. Bone alkaline phosphatase as a surrogate marker of bone metastasis in gastric cancer patients. *BMC Cancer* 2016; **16**: 385 [PMID: 27377907 DOI: 10.1186/s12885-016-2415-x]
- 13 Ingenbleek Y, Young V. Transthyretin (prealbumin) in health and disease: nutritional implications. *Annu*

- Rev Nutr* 1994; **14**: 495-533 [PMID: 7946531 DOI: 10.1146/annurev.nu.14.070194.002431]
- 14 **Rostenberg I**, Rico R, Peñaloza R. Gc globulin and prealbumin serum levels in patients with cancer and benign inflammatory diseases and in asymptomatic smokers. *J Natl Cancer Inst* 1979; **62**: 299-300 [PMID: 84088 DOI: 10.1093/jnci/62.2.299]
  - 15 **Kawai H**, Ota H. Low perioperative serum prealbumin predicts early recurrence after curative pulmonary resection for non-small-cell lung cancer. *World J Surg* 2012; **36**: 2853-2857 [PMID: 22948197 DOI: 10.1007/s00268-012-1766-y]
  - 16 **Zhou J**, Hiki N, Mine S, Kumagai K, Ida S, Jiang X, Nunobe S, Ohashi M, Sano T, Yamaguchi T. Role of Prealbumin as a Powerful and Simple Index for Predicting Postoperative Complications After Gastric Cancer Surgery. *Ann Surg Oncol* 2017; **24**: 510-517 [PMID: 27638673 DOI: 10.1245/s10434-016-5548-x]
  - 17 **Bae HJ**, Lee HJ, Han DS, Suh YS, Lee YH, Lee HS, Cho JJ, Kong SH, Yang HK. Prealbumin levels as a useful marker for predicting infectious complications after gastric surgery. *J Gastrointest Surg* 2011; **15**: 2136-2144 [PMID: 21989582 DOI: 10.1007/s11605-011-1719-z]
  - 18 **Amin MB**, Greene FL, Edge SB, Compton CC, Gershenwald JE, Brookland RK, Meyer L, Gress DM, Byrd DR, Winchester DP. The Eighth Edition AJCC Cancer Staging Manual: Continuing to build a bridge from a population-based to a more "personalized" approach to cancer staging. *CA Cancer J Clin* 2017; **67**: 93-99 [PMID: 28094848 DOI: 10.3322/caac.21388]
  - 19 **Kudou K**, Saeki H, Nakashima Y, Kamori T, Kawazoe T, Haruta Y, Fujimoto Y, Matsuoka H, Sasaki S, Jogo T, Hirose K, Hu Q, Tsuda Y, Kimura K, Ando K, Oki E, Ikeda T, Maehara Y. C-reactive protein/albumin ratio is a poor prognostic factor of esophagogastric junction and upper gastric cancer. *J Gastroenterol Hepatol* 2019; **34**: 355-363 [PMID: 30119141 DOI: 10.1111/jgh.14442]
  - 20 **Miyamoto R**, Inagawa S, Sano N, Tadano S, Adachi S, Yamamoto M. The neutrophil-to-lymphocyte ratio (NLR) predicts short-term and long-term outcomes in gastric cancer patients. *Eur J Surg Oncol* 2018; **44**: 607-612 [PMID: 29478743 DOI: 10.1016/j.ejso.2018.02.003]
  - 21 **Fang T**, Wang Y, Yin X, Zhai Z, Zhang Y, Yang Y, You Q, Li Z, Ma Y, Li C, Song H, Shi H, Zhang Y, Yu X, Gao H, Sun Y, Xie R, Xue Y. Diagnostic Sensitivity of NLR and PLR in Early Diagnosis of Gastric Cancer. *J Immunol Res* 2020; **2020**: 9146042 [PMID: 32211444 DOI: 10.1155/2020/9146042]
  - 22 **Tang C**, Cheng X, Yu S, Wang Y, Hou J, Li Q, Shen Z, Liu T, Cui Y. Platelet-to-lymphocyte ratio and lymphocyte-to-white blood cell ratio predict the efficacy of neoadjuvant chemotherapy and the prognosis of locally advanced gastric cancer patients treated with the oxaliplatin and capecitabine regimen. *Onco Targets Ther* 2018; **11**: 7061-7075 [PMID: 30410363 DOI: 10.2147/OTT.S176768]
  - 23 **Lin JX**, Lin JP, Xie JW, Wang JB, Lu J, Chen QY, Cao LL, Lin M, Tu R, Zheng CH, Huang CM, Li P. Prognostic Value and Association of Sarcopenia and Systemic Inflammation for Patients with Gastric Cancer Following Radical Gastrectomy. *Oncologist* 2019; **24**: e1091-e1101 [PMID: 30910865 DOI: 10.1634/theoncologist.2018-0651]
  - 24 **Deng Q**, He B, Liu X, Yue J, Ying H, Pan Y, Sun H, Chen J, Wang F, Gao T, Zhang L, Wang S. Prognostic value of pre-operative inflammatory response biomarkers in gastric cancer patients and the construction of a predictive model. *J Transl Med* 2015; **13**: 66 [PMID: 25885254 DOI: 10.1186/s12967-015-0409-0]
  - 25 **Chibaudel B**, Tournigand C, Artru P, André T, Cervantes A, Figuer A, Lledo G, Flesch M, Buyse M, Mineur L, Carola E, Rivera F, Perez-Staub N, Louvet C, de Gramont A. FOLFOX in patients with metastatic colorectal cancer and high alkaline phosphatase level: an exploratory cohort of the GERCOR OPTIMOX1 study. *Ann Oncol* 2009; **20**: 1383-1386 [PMID: 19465426 DOI: 10.1093/annonc/mdp012]
  - 26 **Zhang L**, Gong Z. Clinical Characteristics and Prognostic Factors in Bone Metastases from Lung Cancer. *Med Sci Monit* 2017; **23**: 4087-4094 [PMID: 28835603 DOI: 10.12659/msm.902971]
  - 27 **Shaw JA**, Guttery DS, Hills A, Fernandez-Garcia D, Page K, Rosales BM, Goddard KS, Hastings RK, Luo J, Ogle O, Woodley L, Ali S, Stebbing J, Coombes RC. Mutation Analysis of Cell-Free DNA and Single Circulating Tumor Cells in Metastatic Breast Cancer Patients with High Circulating Tumor Cell Counts. *Clin Cancer Res* 2017; **23**: 88-96 [PMID: 27334837 DOI: 10.1158/1078-0432.CCR-16-0825]
  - 28 **Said NM**. Three gold indicators for breast cancer prognosis: a case-control study with ROC analysis for novel ratios related to CBC with (ALP and LDH). *Mol Biol Rep* 2019; **46**: 2013-2027 [PMID: 30706358 DOI: 10.1007/s11033-019-04650-9]
  - 29 **Zhong N**, Leng A, He S, Yang M, Zhang D, Jiao J, Xu W, Yang X, Xiao J. Surgical outcomes and prognostic factors for patients with gastric cancer spinal metastasis. *Cancer Manag Res* 2019; **11**: 6971-6979 [PMID: 31413637 DOI: 10.2147/CMAR.S201372]
  - 30 **Lee JL**, Oh ES, Lee RW, Finucane TE. Serum Albumin and Prealbumin in Calorically Restricted, Nondiseased Individuals: A Systematic Review. *Am J Med* 2015; **128**: 1023.e1-1023. 22 [PMID: 25912205 DOI: 10.1016/j.amjmed.2015.03.032]
  - 31 **Gao W**, Kong M, Yao J, Wang F, Liu J, Wang D, Ma H, Ma L, Duan Z. Changes in Prealbumin and Body Mass Index Associated with T Lymphocyte Subsets and Nutritional Status in Chronic Hepatitis B and HBV-Cirrhosis Patients. *Clin Lab* 2018; **64** [PMID: 30549985 DOI: 10.7754/Clin.Lab.2018.180501]
  - 32 **Picado O**, Dygert L, Macedo FI, Franceschi D, Sleeman D, Livingstone AS, Merchant N, Yakoub D. The Role of Surgical Resection for Stage IV Gastric Cancer With Synchronous Hepatic Metastasis. *J Surg Res* 2018; **232**: 422-429 [PMID: 30463751 DOI: 10.1016/j.jss.2018.06.067]
  - 33 **Polkowska-Pruszyńska B**, Rawicz-Pruszyński K, Ciseł B, Sitarz R, Polkowska G, Krupski W, Polkowski WP. Liver metastases from gastric carcinoma: A Case report and review of the literature. *Curr Probl Cancer* 2017; **41**: 222-230 [PMID: 28625333 DOI: 10.1016/j.cupr.2017.03.003]
  - 34 **Qiu JL**, Deng MG, Li W, Zou RH, Li BK, Zheng Y, Lao XM, Zhou K, Yuan YF. Hepatic resection for synchronous hepatic metastasis from gastric cancer. *Eur J Surg Oncol* 2013; **39**: 694-700 [PMID: 23579173 DOI: 10.1016/j.ejso.2013.03.006]





Published by **Baishideng Publishing Group Inc**  
7041 Koll Center Parkway, Suite 160, Pleasanton, CA 94566, USA

**Telephone:** +1-925-3991568

**E-mail:** [bpgoffice@wjgnet.com](mailto:bpgoffice@wjgnet.com)

**Help Desk:** <https://www.f6publishing.com/helpdesk>

<https://www.wjgnet.com>

