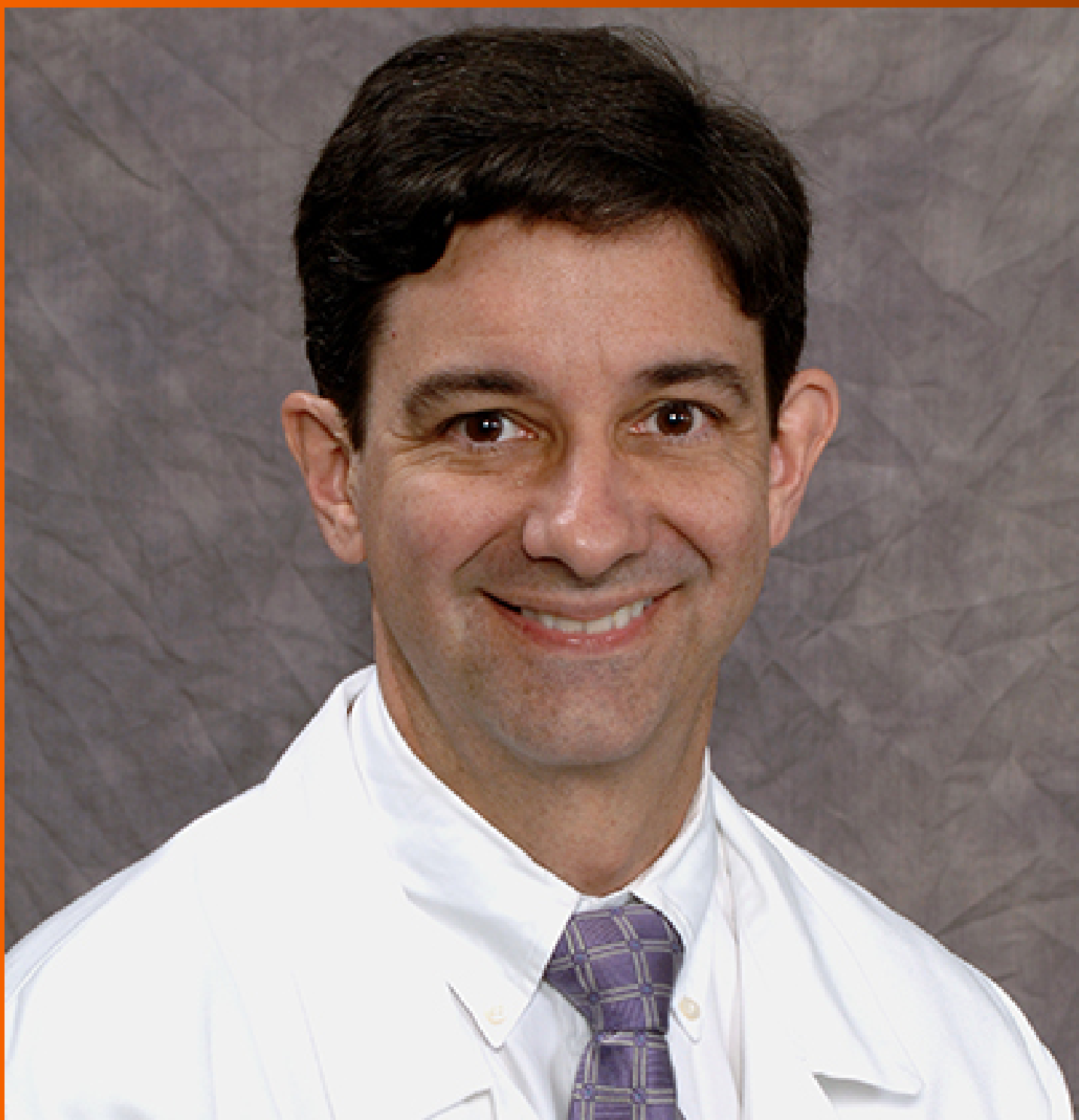


World Journal of *Gastroenterology*

World J Gastroenterol 2021 May 28; 27(20): 2434-2663



REVIEW

- 2434** Role of modern radiotherapy in managing patients with hepatocellular carcinoma
Chen LC, Lin HY, Hung SK, Chiou WY, Lee MS
- 2458** Open reading frame 3 protein of hepatitis E virus: Multi-function protein with endless potential
Yang YL, Nan YC
- 2474** Breakthroughs and challenges in the management of pediatric viral hepatitis
Nicastro E, Norsa L, Di Giorgio A, Indolfi G, D'Antiga L

MINIREVIEWS

- 2495** Pancreatitis after endoscopic retrograde cholangiopancreatography: A narrative review
Ribeiro IB, do Monte Junior ES, Miranda Neto AA, Proença IM, de Moura DTH, Minata MK, Ide E, dos Santos MEL, Luz GO, Matuguma SE, Cheng S, Baracat R, de Moura EGH
- 2507** RON in hepatobiliary and pancreatic cancers: Pathogenesis and potential therapeutic targets
Chen SL, Wang GP, Shi DR, Yao SH, Chen KD, Yao HP
- 2521** Evolving role of endoscopy in inflammatory bowel disease: Going beyond diagnosis
Núñez F P, Krugliak Cleveland N, Quera R, Rubin DT
- 2531** Deep learning for diagnosis of precancerous lesions in upper gastrointestinal endoscopy: A review
Yan T, Wong PK, Qin YY
- 2545** State of machine and deep learning in histopathological applications in digestive diseases
Kobayashi S, Saltz JH, Yang VW
- 2576** COVID-19 in normal, diseased and transplanted liver
Signorello A, Lenci I, Milana M, Grassi G, Baiocchi L

ORIGINAL ARTICLE

Basic Study

- 2586** Upregulation of long noncoding RNA W42 promotes tumor development by binding with DBN1 in hepatocellular carcinoma
Lei GL, Niu Y, Cheng SJ, Li YY, Bai ZF, Yu LX, Hong ZX, Liu H, Liu HH, Yan J, Gao Y, Zhang SG, Chen Z, Li RS, Yang PH

Retrospective Cohort Study

- 2603** Understanding celiac disease monitoring patterns and outcomes after diagnosis: A multinational, retrospective chart review study
Lundin KE, Kelly CP, Sanders DS, Chen K, Kayaniyil S, Wang S, Wani RJ, Barrett C, Yoosuf S, Pettersen ES, Sambrook R, Leffler DA

- 2615** Development and validation of a prognostic model for patients with hepatorenal syndrome: A retrospective cohort study

Sheng XY, Lin FY, Wu J, Cao HC

Observational Study

- 2630** Inflammatory bowel disease in Tuzla Canton, Bosnia-Herzegovina: A prospective 10-year follow-up

Tulumović E, Salkić N, Tulumović D

META-ANALYSIS

- 2643** Association between oral contraceptive use and pancreatic cancer risk: A systematic review and meta-analysis

Ilic M, Milicic B, Ilic I

CASE REPORT

- 2657** Cyclophosphamide-associated enteritis presenting with severe protein-losing enteropathy in granulomatosis with polyangiitis: A case report

Sato H, Shirai T, Fujii H, Ishii T, Harigae H

ABOUT COVER

Editorial Board Member of *World Journal of Gastroenterology*, Fernando J Castro, MD, AGAF, FACC, Gastroenterology Training Program Director, Cleveland Clinic Florida, 2950 Cleveland Clinic Blvd, Weston, FL 33331, United States. castrof@ccf.org

AIMS AND SCOPE

The primary aim of *World Journal of Gastroenterology* (WJG, *World J Gastroenterol*) is to provide scholars and readers from various fields of gastroenterology and hepatology with a platform to publish high-quality basic and clinical research articles and communicate their research findings online. WJG mainly publishes articles reporting research results and findings obtained in the field of gastroenterology and hepatology and covering a wide range of topics including gastroenterology, hepatology, gastrointestinal endoscopy, gastrointestinal surgery, gastrointestinal oncology, and pediatric gastroenterology.

INDEXING/ABSTRACTING

The WJG is now indexed in Current Contents®/Clinical Medicine, Science Citation Index Expanded (also known as SciSearch®), Journal Citation Reports®, Index Medicus, MEDLINE, PubMed, PubMed Central, and Scopus. The 2020 edition of Journal Citation Report® cites the 2019 impact factor (IF) for WJG as 3.665; IF without journal self cites: 3.534; 5-year IF: 4.048; Ranking: 35 among 88 journals in gastroenterology and hepatology; and Quartile category: Q2. The WJG's CiteScore for 2019 is 7.1 and Scopus CiteScore rank 2019: Gastroenterology is 17/137.

RESPONSIBLE EDITORS FOR THIS ISSUE

Production Editor: Ji-Hong Lin; Production Department Director: Yun-Xiaoqian Wu; Editorial Office Director: Ze-Mao Gong.

NAME OF JOURNAL

World Journal of Gastroenterology

ISSN

ISSN 1007-9327 (print) ISSN 2219-2840 (online)

LAUNCH DATE

October 1, 1995

FREQUENCY

Weekly

EDITORS-IN-CHIEF

Andrzej S Tarnawski, Subrata Ghosh

EDITORIAL BOARD MEMBERS

<http://www.wjgnet.com/1007-9327/editorialboard.htm>

PUBLICATION DATE

May 28, 2021

COPYRIGHT

© 2021 Baishideng Publishing Group Inc

INSTRUCTIONS TO AUTHORS

<https://www.wjgnet.com/bpg/gerinfo/204>

GUIDELINES FOR ETHICS DOCUMENTS

<https://www.wjgnet.com/bpg/GerInfo/287>

GUIDELINES FOR NON-NATIVE SPEAKERS OF ENGLISH

<https://www.wjgnet.com/bpg/gerinfo/240>

PUBLICATION ETHICS

<https://www.wjgnet.com/bpg/GerInfo/288>

PUBLICATION MISCONDUCT

<https://www.wjgnet.com/bpg/gerinfo/208>

ARTICLE PROCESSING CHARGE

<https://www.wjgnet.com/bpg/gerinfo/242>

STEPS FOR SUBMITTING MANUSCRIPTS

<https://www.wjgnet.com/bpg/GerInfo/239>

ONLINE SUBMISSION

<https://www.f6publishing.com>



Association between oral contraceptive use and pancreatic cancer risk: A systematic review and meta-analysis

Milena Ilic, Biljana Milicic, Irena Ilic

ORCID number: Milena Ilic 0000-0003-3229-4990; Biljana Milicic 0000-0001-8091-2461; Irena Ilic 0000-0001-5347-3264.

Author contributions: All authors equally contributed to this paper with conception and design of the study, literature review and analysis, drafting and critical revision and editing, and final approval of the final version.

Supported by Ministry of Education, Science and Technological development, Republic of Serbia, 2011–2020, No. 175042.

Conflict-of-interest statement: The authors have no conflicts of interest to declare.

PRISMA 2009 Checklist statement: The authors have read the PRISMA 2009 Checklist, and the manuscript was prepared and revised according to the PRISMA 2009 Checklist.

Open-Access: This article is an open-access article that was selected by an in-house editor and fully peer-reviewed by external reviewers. It is distributed in accordance with the Creative Commons Attribution NonCommercial (CC BY-NC 4.0) license, which permits others to distribute, remix, adapt, build

Milena Ilic, Department of Epidemiology, Faculty of Medical Sciences, University of Kragujevac, Kragujevac 34000, Serbia

Biljana Milicic, Department of Medical Statistics and Informatics, Faculty of Dental Medicine, University of Belgrade, Belgrade 11000, Serbia

Irena Ilic, Faculty of Medicine, University of Belgrade, Belgrade 11000, Serbia

Corresponding author: Milena Ilic, MD, PhD, Professor, Department of Epidemiology, Faculty of Medical Sciences, University of Kragujevac, S. Markovica 69, Kragujevac 34000, Serbia. drmilena@ic@yahoo.com

Abstract

BACKGROUND

Studies on the association of oral contraceptive (OC) use and pancreatic cancer showed inconsistent findings.

AIM

To evaluate the relationship between OC use and pancreatic cancer risk.

METHODS

A literature search for observational studies (case-control and cohort studies) was conducted up to December 2020. A meta-analysis was performed by calculating pooled relative risks (RRs) and 95% confidence intervals (CIs). Heterogeneity was assessed using Cochran's chi-square test and I^2 statistic. Subgroup analyses were performed by study design, source of controls in case-control studies, number of cases of pancreatic cancers, study quality according to Newcastle-Ottawa Scale score, geographical region and menopausal status. All analyses were performed using Review Manager 5.3 (RevMan 5.3).

RESULTS

A total of 21 studies (10 case-control studies and 11 cohort studies) were finally included in the present meta-analysis, comprising 7700 cases of pancreatic cancer in total. A significant association was observed between the ever use of OC and pancreatic cancer risk in the overall analysis (RR = 0.85; 95%CI = 0.73-0.98; $P = 0.03$). Duration of OC use (< 1 year, < 5 years, 5-10 years, > 10 years) was not significantly associated with the risk of pancreatic cancer. Subgroup analyses revealed a statistically significant subgroup difference for the geographic region in which the study was conducted (Europe *vs* Americas *vs* Asia; $P = 0.07$).

upon this work non-commercially, and license their derivative works on different terms, provided the original work is properly cited and the use is non-commercial. See: <http://creativecommons.org/licenses/by-nc/4.0/>

Manuscript source: Invited manuscript

Specialty type: Gastroenterology and hepatology

Country/Territory of origin: Serbia

Peer-review report's scientific quality classification

Grade A (Excellent): 0
Grade B (Very good): B, B
Grade C (Good): 0
Grade D (Fair): 0
Grade E (Poor): 0

Received: February 6, 2021

Peer-review started: February 6, 2021

First decision: February 27, 2021

Revised: March 13, 2021

Accepted: April 23, 2021

Article in press: April 23, 2021

Published online: May 28, 2021

P-Reviewer: Sergi C

S-Editor: Fan JR

L-Editor: Filipodia

P-Editor: Li JH



Subgroup analyses showed a statistically significant decrease in pancreatic cancer risk and OC use in high-quality studies, studies conducted in Europe, and in postmenopausal women.

CONCLUSION

Despite the suggested protective effects of OC use in this meta-analysis, further epidemiological studies are warranted to fully elucidate the association between the use of OC and pancreatic cancer risk.

Key Words: Pancreatic cancer; Oral contraceptives; Risk factors; Risk assessment; Meta-analysis; Review

©The Author(s) 2021. Published by Baishideng Publishing Group Inc. All rights reserved.

Core Tip: Although the understanding of the etiology of pancreatic cancer has improved dramatically over the past decades, the link between pancreatic cancer risk and oral contraceptive (OC) use is still insufficiently known. This meta-analysis showed a significant association between OC use and pancreatic cancer risk (overall relative risk = 0.85; 95% confidence interval = 0.73-0.98). A better understanding of the risks of pancreatic cancer occurrence in women who use OC may be relevant for pancreatic cancer prevention strategy.

Citation: Ilic M, Milicic B, Ilic I. Association between oral contraceptive use and pancreatic cancer risk: A systematic review and meta-analysis. *World J Gastroenterol* 2021; 27(20): 2643-2656

URL: <https://www.wjnet.com/1007-9327/full/v27/i20/2643.htm>

DOI: <https://dx.doi.org/10.3748/wjg.v27.i20.2643>

INTRODUCTION

Pancreatic cancer is the seventh most common cause of death among malignant tumors in females, with about 220000 deaths worldwide in 2018[1,2]. Pancreatic cancer is one of the deadliest types of cancer, with an estimated overall 5-year survival rate less than 10%[1]. Pancreatic cancer mortality is characterized by a dramatic increase after the age of 30 years, reaching the highest burden in women at about 80-years-old[1,3].

An understanding of the etiology of pancreatic cancer has improved dramatically over the past decades and certain risk factors have been established including tobacco use, obesity, diabetes mellitus, chronic pancreatitis, positive family history and inherited genetic syndromes, high alcohol consumption, dietary factors, physical inactivity, workplace exposure to some chemicals, infections[4-7]. Although some risk factors have been identified, the causes of pancreatic cancer are still insufficiently known.

Regarding the link between pancreatic cancer risk and oral contraceptive (OC) use, epidemiological studies have shown conflicting results: Some findings have shown positive associations with risk of pancreatic cancer[8,9], whereas some studies have indicated inverse associations[10,11]. One previous meta-analysis of observational studies did not support the hypothesis that OC use is associated with pancreatic cancer risk (the pooled relative risk [RR] = 1.09, 95% confidence interval [CI] 0.96-1.23)[12].

A better understanding of risks of pancreatic cancer occurrence in women who use OC may be relevant for pancreatic cancer prevention strategy. The purpose of this study was to evaluate the relationship between the use of OC and pancreatic cancer risk by performing a meta-analysis of case-control and cohort studies.

MATERIALS AND METHODS

This meta-analysis was performed following the Preferred Reporting Items for

Systematic Reviews and Meta-Analyses guidelines[13].

Ethics statement

This study is a part of a research project approved by the Ethics Committee of the Faculty of Medical Sciences, University of Kragujevac (No. 01-14321).

Literature search

We searched PubMed from inception through December 2020 using combinations of keywords: (“oral contraceptives” or “birth control pills”) and (“pancreatic cancer” or “pancreatic tumor” or “pancreatic neoplasm”) and (“risk” or “risk factors” or “risk assessment”). Additionally, references of retrieved studies and reviews were hand-searched to identify additional relevant studies (up to 31 December 2020). No language restrictions were applied in the search.

Inclusion and exclusion criteria

Two authors (II and MI) independently screened the titles and abstracts of studies retrieved by literature search. Subsequently, the full texts of articles that were identified as relevant were assessed. Any disagreements between the reviewers were resolved through consensus. Studies which reported on the association between the use of OC (the exposure of interest) and risk of pancreatic cancer (the outcome of interest) and that were designed as case-control studies and cohort studies were included. In cases of multiple publications reporting results from the same population, the most recent report and the one with the most data was used. Case reports, case-series, reviews, letters, animal studies and studies with incomplete data were excluded. Studies that did not report separate data for OC use, but instead reported “any hormone therapy” were excluded.

Data extraction and quality appraisal of included studies

Data extraction and quality appraisal were performed independently by two authors (II and MI). Details regarding the study’s author and year of publication, study design, sample size, methods of exposure assessment, methods of outcome assessment, and main findings regarding the investigated outcome were extracted. Methodological quality of studies was assessed using the Newcastle-Ottawa Scale (NOS) for quality assessment of case-control studies and cohort-studies[14]. This tool rates three categories: Selection, comparability and exposure (in case-control studies) or outcome (in cohort studies) in observational studies using a star-system. We considered studies with 8 and 9 stars as high quality, 6 and 7 stars as medium quality, and ≤ 5 stars as low quality.

Statistical analysis

A meta-analysis of the comparison of nonusers *vs* users of OC was performed. Odds ratios (ORs), RRs, and hazard ratios (HRs) were extracted from included studies and transformed into RRs. It can be considered that OR and HR approximate RR because the absolute risk of pancreatic cancer is low[15]. For studies that did not report risk estimates for the comparison of ever *vs* never use of OC, we calculated ORs and RRs based on the available published data. We pooled risk estimates for pancreatic cancer and calculated overall RRs with 95% CIs. Risk effects were combined using the random-effects model[16]. The $P < 0.05$ was considered significant.

Heterogeneity was quantified using Cochran’s chi-square test and I^2 statistic, with I^2 values of 30%-60%, 50%-90%, and 75%-100% indicating moderate, substantial and considerable heterogeneity, respectively[17]. To explore heterogeneity, we performed subgroup analyses by study design (case-control and cohort), source of controls in case-control studies (population and hospital), number of cases of pancreatic cancers (< 200 and ≥ 200), and assessed study quality (NOS score ≤ 7 and > 7), geographical region (Europe, Americas, Asia), and menopausal status (premenopausal and postmenopausal). Statistically significant subgroup differences were considered for $P < 0.1$ [18].

The pooled RRs with corresponding 95% CIs were presented graphically with forest plots. Publication bias was assessed with a funnel plot. All statistical analyses were performed using Review Manager 5 software (RevMan version 5.3, The Nordic Cochrane Centre, The Cochrane Collaboration)[19].

RESULTS

Literature search results and characteristics of included studies

The results of the literature search are presented in [Figure 1](#). We identified 21 studies that investigated the association between the use of OC and risk of pancreatic cancer and that fulfilled the inclusion criteria[8-11,20-36]. There were 10 case-control studies and 11 cohort studies included in the meta-analysis. Characteristics of the included studies are presented in [Table 1](#). In total, the included studies comprised 7700 cases of pancreatic cancer. Among the case-control studies, six had population-based controls and four had hospital based-controls. The use of OC was assessed *via* interviews with trained interviewers in 11 studies by means of self-reported questionnaires in 9 studies, and one study used data from the National Register of Medicinal Products. Outcome assessment was verified through cancer and hospital registries, and in most of the studies, there was pathohistological verification of the diagnosis of pancreatic cancer. Seven studies were conducted in the European region, ten in the Americas (the United States and Canada), three in Asia, and one study was multicentric and conducted in all three regions. According to NOS scores, 12 studies were of high quality (3 case-control and 9 cohort), 8 of moderate quality (6 case-control and 2 cohort), and 1 case-control study was of low quality.

Ever use of OC and risk of pancreatic cancer

Pooled risk estimates of all included studies showed that the ever use of OC was statistically significantly associated with a decreased risk of pancreatic cancer (RR = 0.85, 95%CI: 0.73-0.98; $P = 0.03$) ([Figure 2](#)). There was substantial heterogeneity for this estimate ($I^2 = 78\%$; $P < 0.00001$). Pooled risk estimates from case-control studies were not statistically significant (RR = 0.85, 95%CI: 0.64-1.14), while the association between ever use of OC and decreased risk of pancreatic cancer was borderline significant in cohort studies (RR = 0.84, 95%CI: 0.70-1.00). Visual inspection of funnel plot ([Figure 3](#)) did not indicate any apparent presence of publication bias.

Duration of OC use and risk of pancreatic cancer

Ever use *vs* never use of OC was chosen as the primary assessment of exposure because some studies have reported that it was not possible to assess the years of oral contraceptive use in their sample[10] or simply did not inquire participants about the duration of use[8-11,23,29,34]. However, we pooled the results from the subset of studies that investigated the duration of use of OC and risk of pancreatic cancer and that reported comparable cut-off periods. Eight studies (2 case-control and 6 cohort) assessed the < 1 year duration of OC use and risk of pancreatic cancer and the pooled risk estimate was not statistically significant (RR = 1.08, 95%CI: 0.91-1.29; $P = 0.38$) ([Figure 4A](#)). Similarly, across one case-control and six cohort studies, the results were not significant for durations of use: < 5 years (RR = 1.07, 95%CI: 0.95-1.19; $P = 0.27$) ([Figure 4B](#)), 5-10 years (RR = 1.08, 95%CI: 0.938-1.26; $P = 0.29$) ([Figure 4C](#)) and > 10 years (RR = 1.16, 95%CI: 0.92-1.45; $P = 0.20$) ([Figure 4D](#)).

Subgroup analyses

Results of the subgroup analyses by selected characteristics are presented in [Table 2](#). Statistically significant results for subgroup differences were noted only for geographic region (Europe *vs* Americas *vs* Asia) where studies were conducted ($P = 0.07$), while there were no significant subgroup differences noted for study design (case-control *vs* cohort studies), source of controls in case-control studies (population *vs* hospital), number of pancreatic cancer cases (< 200 *vs* ≥ 200), study quality (NOS ≤ 7 *vs* NOS > 7), or menopausal status (premenopausal *vs* postmenopausal). Finally, subgroup analyses revealed a statistically significant association between the use of OC and decreased risk of pancreatic cancer in studies of high quality (RR = 0.80, 95%CI: 0.66-0.98; $P = 0.03$), studies conducted in Europe (OR = 0.67, 95%CI: 0.51-0.88; $P = 0.004$) and in postmenopausal women ($r = 0.88$, 95%CI: 0.79-0.98; $P = 0.02$).

DISCUSSION

In this systematic review and meta-analysis, we identified 10 case-control and 11 cohort studies that investigated the association between the use of OC and pancreatic cancer. Our pooled analysis of these 21 studies, which comprised 7700 cases of pancreatic cancer, showed that the ever use of OC was statistically significantly

Table 1 Characteristics of included studies

Study design	Ref.	Country	Sample size ¹	Exposure assessment	Outcome assessment	Risk estimate (95%CI) ²	Adjustments	NOS score
Case-control	Bueno de Mesquita <i>et al</i> [20], 1992	Netherlands	82 cases and 252 controls	Interviewer administered questionnaire	Clinical diagnosis (histological verification, clinicians, laboratory records, registries)	OR = 0.83 (0.31-2.23)	Age, response status and life-time smoking of cigarettes	7
	Ji <i>et al</i> [21], 1996	China	184 cases and 680 controls	Interviewer administered questionnaire	Rapid reporting system within cancer registry	OR = 1.78 (0.91-3.47)	Age, income, education, smoking, BMI, green tea drinking, respondent status, age at first birth, intake of dietary vitamin C	7
	Kreiger <i>et al</i> [10], 2001	Canada	52 cases and 233 controls	Mailed questionnaire	Cancer registry	OR = 0.36 (0.13-0.96); <i>P</i> = 0.031	Age, smoking status, BMI, tofu, dietary fat, coffee consumption, age at menarche, age at menopause, parity, estrogen replacement therapy age at first full term pregnancy	8
	Duell <i>et al</i> [22], 2005	United States	241 cases and 818 controls	Interviewer administered questionnaire	Physician, SEER and histologic confirmation	OR = 0.95 (0.65-1.4)	Age, education, smoking	8
	Duell <i>et al</i> [23], 2009	Australia, Canada, The Netherlands, Poland	367 cases and 821 controls	Interviewer administered questionnaire	Clinicians, hospital records, pathology records, cancer registries	OR = 0.74 (0.43-1.26)	Smoking, schooling, age, center, type of interview	8
	Zhang <i>et al</i> [24], 2010	United States	284 cases and 1096 controls	Interviewer administered questionnaire	Pathology report confirmation	³	-	6
	Lucenteforte <i>et al</i> [8], 2011	Italy	285 cases and 713 controls	Interviewer administered questionnaire	Histologically confirmed	OR = 1.04 (0.55-1.98)	Study/center, age, education, area of residence, year of interview, history of diabetes, tobacco smoking	7
	Azeem <i>et al</i> [11], 2015	Czech Republic	129 cases and 97 controls	Interviewer administered questionnaire	Hospital diagnosis	OR = 0.21 (0.07-0.69)	Not specified (other monitored factors)	5
	Masoudi <i>et al</i> [9], 2017	Iran	153 cases and 202 controls	Interviewer administered questionnaire	Pathological reports	OR = 1.07 (0.62-1.84)	Smoking status, BMI, diabetes	6
	Archibugi <i>et al</i> [25], 2020	Italy	253 cases and 506 controls	Interviewer administered questionnaire	Histologically proven diagnosis	OR = 0.52 (0.31-0.89)	Age, BMI, first degree family history of pancreatic cancer, history of diabetes > 1 yr, history of chronic pancreatitis, heavy alcohol intake, smoking habit	7
Cohort	Skinner <i>et al</i> [26],	United States	243 cases and	Mailed questionnaire	Self-reported confirmed <i>via</i> medical	RR = 1.21	Age, time period, cigarette smoking, diabetes, BMI, height,	8

2003		115474 non-cases		records, pathology reports, death certificates, physicians, next of kin interview	(0.91-1.61)	parity	
Teras <i>et al</i> [27], 2005	United States	1959 cases among 387981 participants	Self-administered questionnaire	National Death Index and death certificates	³	-	8
Navarro Silvera <i>et al</i> [28], 2005	Canada	187 cases and 89645 noncases	Self-administered questionnaire	Canadian Cancer Database and the National mortality database	HR = 1.10 (0.81-1.50)	Age, cigarette smoking intensity, cigarette smoking duration, BMI, height, study center, randomization group, parity	8
Prizment <i>et al</i> [29], 2007	United States	228 cases and 37231 noncases	Self-administered questionnaire	National Death Index and State Health Registry of Iowa	HR = 0.90 (0.62-1.30)	Age	7
Dorjgochoo <i>et al</i> [30], 2009	China	78 cases among 66661 participants	In-person interview and a self-reported questionnaire	Shanghai Cancer registry and Shanghai Vital Statistics Registry	HR = 0.83 (0.45-1.55)	Education, age at menarche, number of live births, cumulative breast feeding months, BMI, exercised regularly in past 5 yr, smoking, menopausal status, first-degree family history of cancer, other contraceptive methods	9
Duell <i>et al</i> [31], 2013	Denmark, France, Germany, Greece, Italy, Netherlands, Norway, Spain, Sweden, United Kingdom	304 cases among 328610 participants	Self-administered questionnaire	Population cancer registries, health insurance records, hospital-based and pathology registries	³	-	8
Lee <i>et al</i> [32], 2013	United States	323 cases among 118164 participants	Self-administered questionnaire	California Cancer Registry	³	-	8
Kabat <i>et al</i> [33], 2017	United States	1003 cases and 157295 non-cases	Self-administered questionnaire	Self-reports verified by physician adjudicators through records of hospitalizations, surgeries, pathology reports and procedures	HR = 0.92 (0.80-1.06)	Age, smoking status, pack-years of smoking, BMI, educational level, ethnicity, allocation to study component, diabetes	7
Andersson <i>et al</i> [34], 2018	Sweden	110 cases and 16921 noncases	On-site questionnaires and examinations	Swedish Cancer register confirmed by pathology records, autopsy	HR = 0.68 (0.44-1.06)	Age, smoking, alcohol consumption, BMI	8
Butt <i>et al</i> [35], 2018	Denmark	235 cases among 1.9 million women	National Register of Medicinal Product Statistics	Danish Cancer Register and Danish National Patient Register	RR = 0.90 (0.68-1.19)	Age, year, education, PCOS, endometriosis, parity	9
Michels <i>et al</i> [36], 2018	United States	1000 cases and 195536 noncases	Mailed questionnaire	Cancer registries	HR = 1.11 (0.97-1.28)	Age, race, BMI, smoking status, alcohol use, number of cigarettes smoked per day	8

¹For samples including both sexes only data for women were presented.

²Ever use of oral contraceptives *vs* never use.

³Not reported, derived from available published data.

CI: Confidence interval; NOS: Newcastle-Ottawa Scale; OR: Odds ratio; RR: Relative risk; HR: Hazard ratio; BMI: Body mass index; PCOS: Polycystic ovary syndrome.

associated with a decreased risk of pancreatic cancer. However, the association was not significant when the duration of OC use less than 1 year, less than 5 years, 5-10 years, and longer than 10 years was assessed in relation to pancreatic cancer risk. A

Table 2 Association between the use of oral contraceptives and risk of pancreatic cancer: Subgroup analysis

Characteristic	Subgroup	Number of studies	RR (95%CI)	I ² within each subgroup	Test for subgroups differences
Study design	Case-control	10	0.85 (0.64-1.14)	60% (<i>P</i> = 0.008)	<i>P</i> = 0.92
	Cohort	11	0.84 (0.70-1.00)	85% (<i>P</i> < 0.00001)	
Source of controls in case-control studies	Population	6	0.75 (0.47-1.21)	63% (<i>P</i> = 0.02)	<i>P</i> = 0.47
	Hospital	4	0.94 (0.64-1.39)	61% (<i>P</i> = 0.06)	
Number of pancreatic cancer cases	< 200	8	0.80 (0.56-1.14)	66% (<i>P</i> = 0.004)	<i>P</i> = 0.77
	≥ 200	13	0.85 (0.71-1.00)	83% (<i>P</i> < 0.00001)	
Assessed study quality	NOS ≤ 7	9	0.93 (0.75-1.17)	56% (<i>P</i> = 0.02)	<i>P</i> = 0.33
	NOS > 7	12	0.80 (0.66-0.98)	84% (<i>P</i> < 0.00001)	
Geographic region ¹	Europe	7	0.67 (0.51-0.88)	55% (<i>P</i> = 0.04)	<i>P</i> = 0.07
	Americas	10	0.91 (0.74-1.11)	86% (<i>P</i> < 0.00001)	
	Asia	3	1.14 (0.76-1.73)	27% (<i>P</i> = 0.25)	
Menopausal status	Premenopausal	1	0.90 (0.68-1.19)	N/A	0.90
	Postmenopausal	4	0.88 (0.79-0.98)	17% (<i>P</i> = 0.31)	

¹One study was multicentric and conducted in all three geographic regions so it was not included in the subgroup analysis by geographic region.
CI: Confidence interval; NOS: Newcastle-Ottawa Scale; RR: Relative risk.

significantly reduced risk of pancreatic cancer in women using OC was noted in higher quality studies, studies conducted in Europe, and in postmenopausal women.

Differences in pancreatic cancer incidence rates between sexes, namely a higher incidence of pancreatic cancer in men than in women[7], have led to investigations into possible reasons behind these differences. Apart from the possible influence of environmental factors, it was hypothesized that female sex hormones could be responsible for a lower incidence of pancreatic cancer in women. *In vitro* and *in vivo* studies have shown that the pancreas contains estrogen and androgen receptors and that estrogen inhibits and testosterone promotes the occurrence of some pancreatic cancers[37].

Numerous observational studies have investigated the role of the use of OC and risk of pancreatic cancer; however, the results were not consistent. While some authors have reported an inverse relationship between the use of OC and risk of pancreatic cancer[10,11,25,31,32], other studies have not confirmed these findings. However, none of the published studies found a significant positive relationship between the ever use of OC and pancreatic cancer. With regard to the duration of OC use, our pooled analyses did not identify a significant association with pancreatic cancer risk. Still, one cohort study revealed a significant increase in pancreatic cancer risk in women using OC < 1 year (HR = 1.65, 95%CI: 1.08-2.50)[28], but the number of cases of pancreatic cancer in the group of women who were taking OC less than 1 year was small. Also, one hospital-based case-control study (NOS score assessed as 6) found a borderline positive association for the duration of use of OC of 5-10 years and > 10 years and risk of pancreatic cancer[24], and, despite the small numbers of cases in these groups, the *P* for trend was significant (< 0.01). In contrast, Kreiger *et al*[10] found a significant decrease in pancreatic cancer risk in women using OC longer than 6 mo. These discrepancies in results across the studies might be explained by differences in study design, study population, assessment of exposure assessment, definitions of exposure,

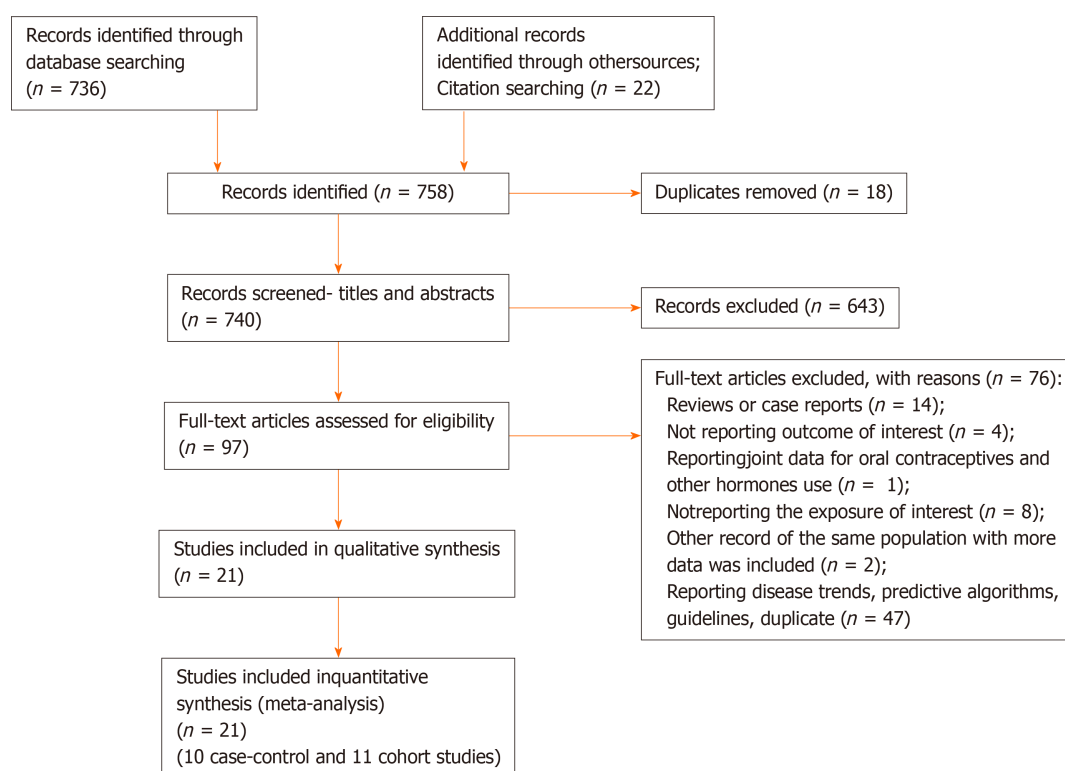


Figure 1 Flow-diagram of literature search.

and different cut-offs for duration of use of OC. Additionally, most of the studies have reported risk estimates adjusted for known and potential pancreatic cancer risk factors (age, diabetes, cigarette smoking, obesity), but with fewer studies also providing estimates adjusted for history of pancreatitis, positive family history of pancreatic cancer and high level of alcohol consumption[25,30,34,36] and one study reporting estimates adjusted only for age[29]. While some of the included studies have adjusted for factors which refer to diet, this most often involved body mass index (BMI)[9,10,21,25,26,28,30,33,34,36], with only two studies investigating nutrition variables such as green tea drinking and intake of dietary vitamin C[21], and coffee and tofu consumption and dietary fat intake[10]. Obesity is a risk factor for pancreatic cancer; however, the mechanisms are not fully known and may involve sex hormones[21]. High BMI might reflect high intake of dietary fat, although the findings regarding its association with pancreatic cancer risk are inconsistent[21,34]. Notably, adipose tissue produces estrogens and might have a protective role[34]. Therefore, dietary factors could confound the association between the risk for pancreatic cancer and the use of OC[10]. Similarly, studies investigating nutrition and pancreatic cancer risk should adjust for reproductive factors such as the use of OC.

Subgroup analyses identified a significantly lower risk of pancreatic cancer in women in European region who used OC (RR = 0.67, 95%CI: 0.51-0.88). Worldwide, highest incidence of pancreatic cancer in women was noted in Northern America, Western and Northern Europe[7]. Prevalence of OC use was the highest in Northern America, followed by Europe and Asia at 75%, 69% and 68%, respectively[38]. The differences in pancreatic cancer risk associated with the use of OC between different geographic regions could be explained by differences in exposure to environmental risk factors, genetic or cultural differences. Notably, most of the studies pooled in this meta-analysis have included relevant known or potential risk factors as covariates in the adjustments of risk estimates. It is also possible that regional differences in diagnosis and outcome assessment and reporting could contribute to the observed significant difference in subgroup analyses by geographic region. Possible explanations for the observed inverse relationship between the use of OC and pancreatic cancer in postmenopausal women could be related to the age of menopause, duration of menopause, duration of use of OC, and formulation of used OC.

Our literature search revealed one previously published meta-analysis that assessed the association between pancreatic cancer risk and female hormonal and menstrual factors[12], and one pooled analysis from the international pancreatic cancer case-control consortium[39]. In contrast to our results, a previous meta-analysis found no

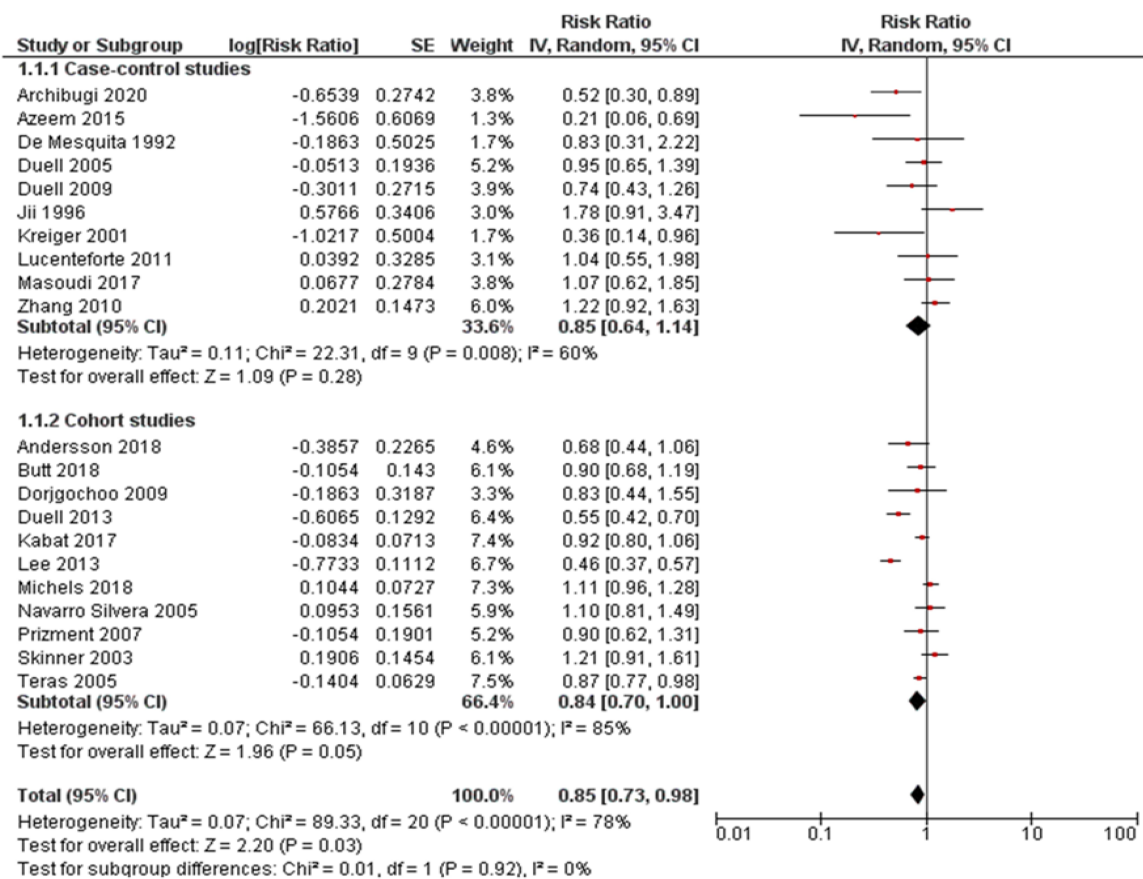


Figure 2 Forest plot of the association between the use of oral contraceptives and risk of pancreatic cancer. CI: Confidence interval.

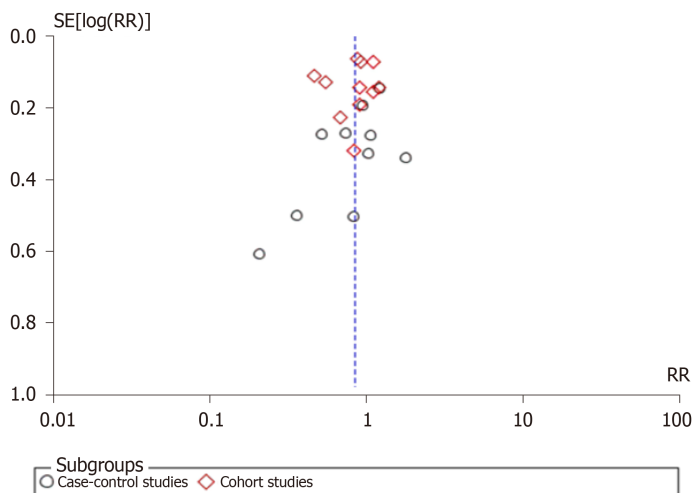
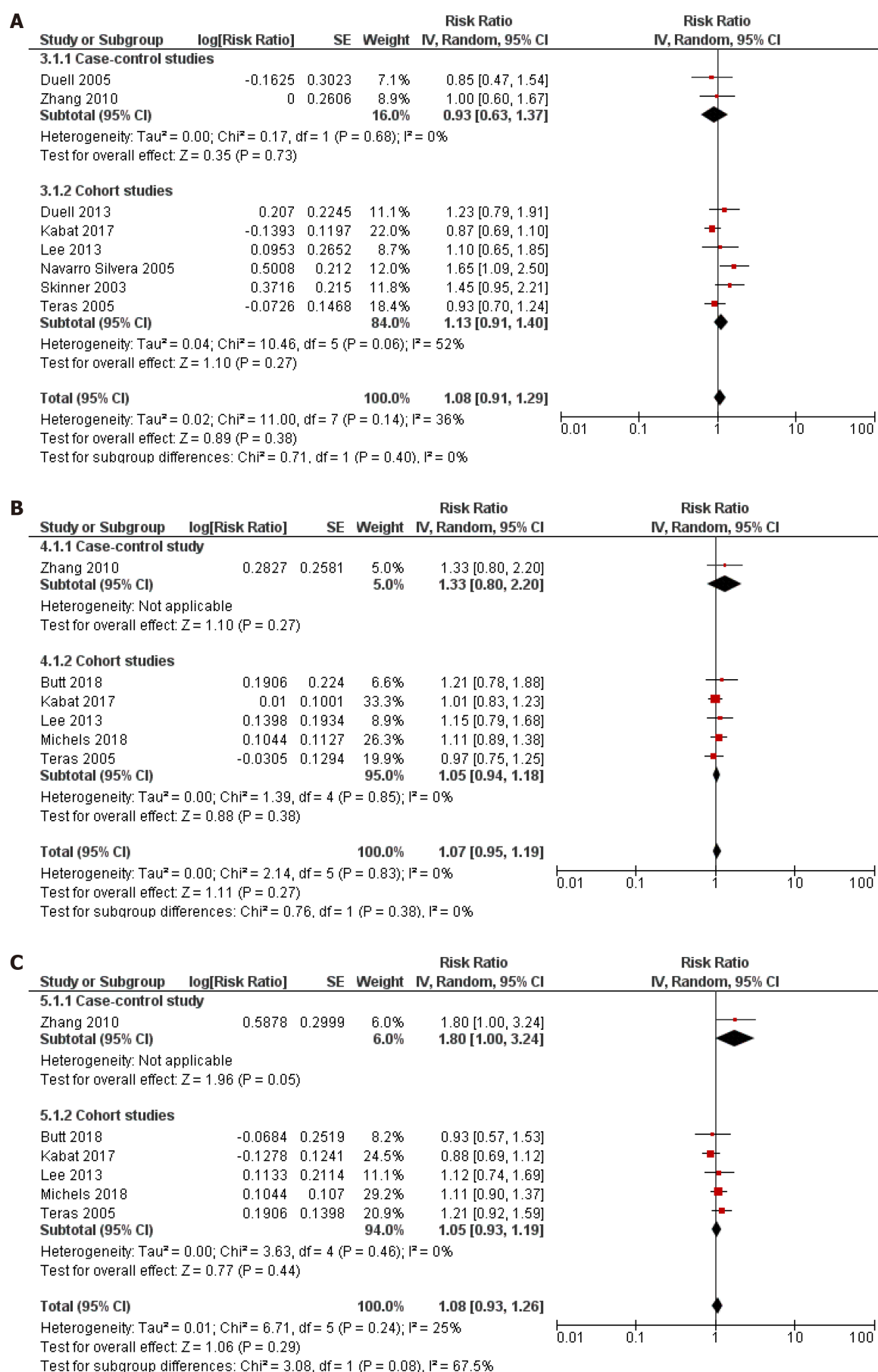


Figure 3 Funnel plot of studies investigating the use of oral contraceptives and risk of pancreatic cancer. RR: Relative risk.

significant associations between the risk of pancreatic cancer and OC use—pooled RR from six case-control studies and eight cohort studies was 1.09 (95%CI: 0.96-1.23)[12]. Subsequently, the authors noted that their subgroup analyses by study design showed a marginally significant increased risk of pancreatic cancer associated with OC use in cohort studies (RR = 1.09, 95%CI: 1.00-1.29). Our subgroup analyses by study design identified the opposite, namely, a borderline insignificant result for inverse association (RR = 0.84, 95%CI: 0.70-1.00). However, the authors identified publication bias for studies on exposure to OC, which could mask the true association. Our meta-analysis included an additional 4 case-control studies and 3 cohort studies, totaling 7700 cases of pancreatic cancer *vs* 5084 in the previous meta-analysis, and our analysis did not identify publication bias. Also, our study did not have language limitations in the



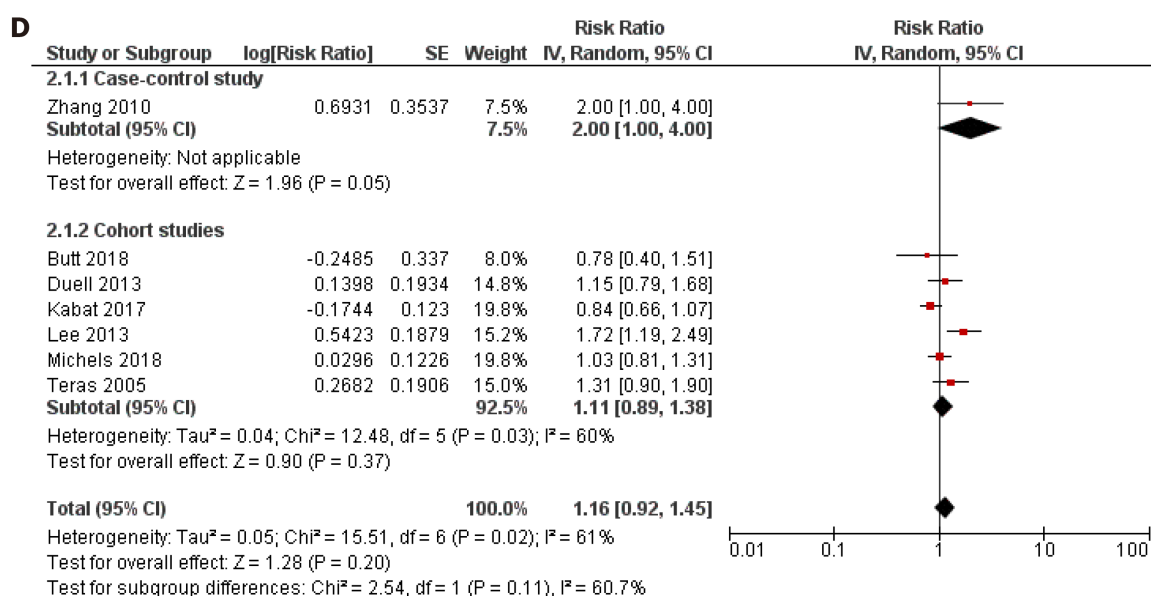


Figure 4 Forest plot of the association between pancreatic cancer risk and duration of oral contraceptives use. A: Less than 1 year; B: Less than 5 years; C: 5-10 years; D: Longer than 10 years. CI: Confidence interval.

literature search in contrast to previously conducted meta-analyses. A previous meta-analysis did not assess the quality of included studies, unlike our study that also explored subgroup differences in relation to study quality and found a statistically significant reduction in pancreatic cancer risk associated with the use of OC (RR = 0.67, 95%CI: 0.51-0.88) when pooling results from studies of high quality. The previous pooled analysis that included only case-control studies did not find a significant association between the ever use of OC and pancreatic cancer (OR = 0.83, 95%CI: 0.69-1.01).

Finally, studies included in this meta-analysis have been conducted in different time periods and the influence of different formulations of OC cannot be excluded. However, only one of the included studies inquired about the type of OC used by women[35], and did not find a significant association between pancreatic cancer and use of different types of hormonal contraceptives (RR = 0.92, 95%CI: 0.62-1.36 for oral combined 20-40 ug ethinyl estradiol, and RR = 1.16, 95%CI: 0.71-1.89 for progestin only). Further on, two studies made assumptions regarding the dose of OC by using the calendar year of use as a proxy for whether women were taking high-dose or low dose formulations[32,34]. Andersson *et al*[34] did not find a significant association between the risk of pancreatic cancer and use of OC in 1960-1970, after 1970, 1960-1980 or after 1980. However, Lee *et al*[32] found that a duration dose was present for high-dose use of OC (women who stopped using OC before 1974, P for trend 0.027), and in particular the risk for pancreatic cancer was increased in women using high-dose OC ≥ 10 years (RR = 2.08, 95%CI: 1.05-4.12). Due to the inconsistent results obtained by case-control and cohort studies, it is important to address this issue when planning future observational studies in order to provide further insight into the association between the use of OC and risk of pancreatic cancer.

Strengths and limitations

To the best of our knowledge, this represents the most comprehensive meta-analysis of observational studies which have investigated the association between the use of OC and risk of pancreatic cancer to date. Our analysis included 21 published studies with 7700 from various geographic regions which could add to the generalizability of the presented results. Also, the quality of included studies was relatively high and assessment of outcome involved pathohistological confirmation in majority of the cases.

However, our study had several limitations. First, this was a meta-analysis of observational studies and inherit limitations of study design of included studies cannot be excluded. Second, assessment of exposure was mostly based on self-report or obtained through interview, with only one study investigating the use of OC through a national medicinal registry. Further on, even though we applied a random-effects model in our meta-analyses, a high level of heterogeneity was found in some comparisons in our analyses, which we tried to explore by performing subgroup

analyses. We did not assess the association between pancreatic cancer and age at initiation of OC use, years since last use and intensity of use because only two studies reported this data and used different cut-offs. Our analyses pooled risk estimates adjusted for most potential cofactors as available in original studies, however it is not possible to exclude the influence of some confounding factors. Namely, the use of OC could be related with a higher socio-economic status which can in turn be related to a healthier diet[25]. Presence of bias due to the lack of confounding control cannot be excluded in included studies which have not considered dietary factors as possible confounding factors when investigating the association between the use of OC and risk for pancreatic cancer. Further on, for a few studies for which we needed to derive the necessary risk estimates there were no available adjusted risk estimates. Finally, an analysis of individual-patient data would have provided more precise results regarding the association between the use of OC and risk of pancreatic cancer.

CONCLUSION

Ever use of OC was associated with a decreased risk of pancreatic cancer in the present meta-analysis. However, more well-designed and detailed epidemiological studies are necessary in order to fully elucidate the association between the use of OC and pancreatic cancer.

ARTICLE HIGHLIGHTS

Research background

Pancreatic cancer is the seventh most common cause of death among malignant tumors in women. It represents one of the deadliest types of cancer with overall 5-year survival rate < 10%.

Research motivation

Although the understanding of the etiology of pancreatic cancer has improved over the past decades and certain risk factors have been established, the causes of pancreatic cancer are still insufficiently known. Results of epidemiological studies show conflicting results regarding the association of the use of oral contraceptives (OC) and risk for pancreatic cancer.

Research objectives

The aim of this study was to evaluate the relationship between the use of OC and risk for pancreatic cancer.

Research methods

A comprehensive literature search was performed based on defined inclusion and exclusion criteria. Quality of included observational studies was assessed and data was extracted. A meta-analysis of ever-use *vs* never-use of OC and risk for pancreatic cancer was performed using Review Manager 5.3. In addition, the association between the duration of use of OC and pancreatic cancer risk was also assessed, and a subgroup analysis was performed.

Research results

A total of 7700 cases of pancreatic cancer from 21 studies (10 case-control and 11 cohort) were included in this meta-analysis. A significant association was observed between the ever-use of OC and pancreatic cancer risk (relative risk = 0.85; 95% confidence interval: 0.73-0.98), while the duration of use (< 1 year, < 5 years, 5-10 years, > 10 years) did not show a significant association. Subgroup analysis revealed a statistically significant decrease in pancreatic cancer and use of OC in high quality studies, studies conducted in Europe and in postmenopausal women.

Research conclusions

This meta-analysis suggests a protective effect of the use of OC and pancreatic cancer occurrence, however more epidemiological studies are necessary to fully elucidate this association.

Research perspectives

Further epidemiological studies are warranted to fully assess the association between the use of OC and risk for pancreatic cancer. These future studies investigating the risk for pancreatic cancer should be well-designed and include detailed questions regarding the use of OC.

REFERENCES

- 1 **International Agency for Research on Cancer.** Cancer Incidence in Five Continents. Vol. XI (electronic version). Lyon: International Agency for Research on Cancer. [cited 20 January 2021]. Available from: <http://ci5.iarc.fr>
- 2 **Bray F, Ferlay J, Soerjomataram I, Siegel RL, Torre LA, Jemal A.** Global cancer statistics 2018: GLOBOCAN estimates of incidence and mortality worldwide for 36 cancers in 185 countries. *CA Cancer J Clin* 2018; **68**: 394-424 [PMID: [30207593](#) DOI: [10.3322/caac.21492](#)]
- 3 **Ilić M, Vlajinac H, Marinković J, Kocev N.** Pancreatic cancer mortality in Serbia from 1991-2010 - a joinpoint analysis. *Croat Med J* 2013; **54**: 369-375 [PMID: [23986278](#) DOI: [10.3325/cmj.2013.54.369](#)]
- 4 **GBD 2017 Pancreatic Cancer Collaborators.** The global, regional, and national burden of pancreatic cancer and its attributable risk factors in 195 countries and territories, 1990-2017: a systematic analysis for the Global Burden of Disease Study 2017. *Lancet Gastroenterol Hepatol* 2019; **4**: 934-947 [PMID: [31648972](#) DOI: [10.1016/S2468-1253\(19\)30347-4](#)]
- 5 **Zanini S, Renzi S, Limongi AR, Bellavite P, Giovino F, Bermano G.** A review of lifestyle and environment risk factors for pancreatic cancer. *Eur J Cancer* 2021; **145**: 53-70 [PMID: [33423007](#) DOI: [10.1016/j.ejca.2020.11.040](#)]
- 6 **Lin QJ, Yang F, Jin C, Fu DL.** Current status and progress of pancreatic cancer in China. *World J Gastroenterol* 2015; **21**: 7988-8003 [PMID: [26185370](#) DOI: [10.3748/wjg.v21.i26.7988](#)]
- 7 **Ilic M, Ilic I.** Epidemiology of pancreatic cancer. *World J Gastroenterol* 2016; **22**: 9694-9705 [PMID: [27956793](#) DOI: [10.3748/wjg.v22.i44.9694](#)]
- 8 **Lucenteforte E, Zucchetto A, Bosetti C, Talamini R, Negri E, Serraino D, Franceschi S, Lipworth L, La Vecchia C.** Reproductive and hormonal factors and pancreatic cancer risk in women. *Pancreas* 2011; **40**: 460-463 [PMID: [21343831](#) DOI: [10.1097/MPA.0b013e31820bf986](#)]
- 9 **Masoudi S, Momayez Sanat Z, Mahmud Saleh A, Nozari N, Ghamarazad N, Pourshams A.** Menstrual and Reproductive Factors and Risk of Pancreatic Cancer in Women. *Middle East J Dig Dis* 2017; **9**: 146-149 [PMID: [28894516](#) DOI: [10.15171/mejdd.2017.65](#)]
- 10 **Kreiger N, Lacroix J, Sloan M.** Hormonal factors and pancreatic cancer in women. *Ann Epidemiol* 2001; **11**: 563-567 [PMID: [11709276](#) DOI: [10.1016/s1047-2797\(01\)00219-8](#)]
- 11 **Azeem K, Horáková D, Tomášková H, Ševčíková J, Vlčková J, Pastucha D, Procházka V, Shonová O, Martínek A, Janout V, Židková V, Kollárová H.** [A multifactor epidemiological analysis of risk factors for pancreatic cancer in women]. *Epidemiol Mikrobiol Imunol* 2015; **64**: 34-40 [PMID: [25872994](#)]
- 12 **Tang B, Lv J, Li Y, Yuan S, Wang Z, He S.** Relationship between female hormonal and menstrual factors and pancreatic cancer: a meta-analysis of observational studies. *Medicine (Baltimore)* 2015; **94**: e177 [PMID: [25700305](#) DOI: [10.1097/MD.0000000000000177](#)]
- 13 **Moher D, Liberati A, Tetzlaff J, Altman DG; PRISMA Group.** Preferred reporting items for systematic reviews and meta-analyses: the PRISMA statement. *PLoS Med* 2009; **6**: e1000097 [PMID: [19621072](#) DOI: [10.1371/journal.pmed.1000097](#)]
- 14 **Wells GA, Shea B, O'Connell D, Peterson J, Welch V, Losos M, Tugwell P.** The Newcastle-Ottawa Scale (NOS) for assessing the quality of nonrandomised studies in meta-analyses. Ottawa, ON: Ottawa Hospital Research Institute, 2014. [cited 20 January 2021]. Available from: https://www.ohri.ca/programs/clinical_epidemiology/oxford.asp
- 15 **Greenland S.** Quantitative methods in the review of epidemiologic literature. *Epidemiol Rev* 1987; **9**: 1-30 [PMID: [3678409](#) DOI: [10.1093/oxfordjournals.epirev.a036298](#)]
- 16 **DerSimonian R, Laird N.** Meta-analysis in clinical trials. *Control Clin Trials* 1986; **7**: 177-188 [PMID: [3802833](#) DOI: [10.1016/0197-2456\(86\)90046-2](#)]
- 17 **Higgins JPT, Green S (editors).** Cochrane Handbook for Systematic Reviews of Interventions Version 5.1.0. The Cochrane Collaboration, 2011. [cited 20 January 2021]. Available from: <https://www.handbook.cochrane.org>
- 18 **Richardson M, Garner P, Donegan S.** Interpretation of subgroup analyses in systematic reviews: a tutorial. *Clin Epidemiol Glob Health* 2019; **7**: 192-198 [DOI: [10.1016/j.cegh.2018.05.005](#)]
- 19 **RevMan.** 2014 [Computer program] Nordic Cochrane Centre, The Cochrane Collaboration. Review Manager (RevMan). Version 5.3. Copenhagen: Nordic Cochrane Centre, The Cochrane Collaboration, 2014
- 20 **Bueno de Mesquita HB, Maisonneuve P, Moerman CJ, Walker AM.** Anthropometric and reproductive variables and exocrine carcinoma of the pancreas: a population-based case-control study in The Netherlands. *Int J Cancer* 1992; **52**: 24-29 [PMID: [1500223](#) DOI: [10.1002/ijc.2910520106](#)]
- 21 **Ji BT, Hatch MC, Chow WH, McLaughlin JK, Dai Q, Howe GR, Fraumeni JF Jr.**

- Anthropometric and reproductive factors and the risk of pancreatic cancer: a case-control study in Shanghai, China. *Int J Cancer* 1996; **66**: 432-437 [PMID: 8635856 DOI: 10.1002/(SICI)1097-0215(19960516)66:4<432::AID-IJC4>3.0.CO;2-X]
- 22 Duell EJ, Holly EA. Reproductive and menstrual risk factors for pancreatic cancer: a population-based study of San Francisco Bay Area women. *Am J Epidemiol* 2005; **161**: 741-747 [PMID: 15800266 DOI: 10.1093/aje/kwi104]
- 23 Duell EJ, Maisonneuve P, Baghurst PA, Bueno-de-Mesquita HB, Ghadirian P, Miller AB, Zatonski W, Vrieling A, Boffetta P, Boyle P. Menstrual and reproductive factors and pancreatic cancer in the SEARCH program of the IARC. *Cancer Causes Control* 2009; **20**: 1757-1762 [PMID: 19653108 DOI: 10.1007/s10552-009-9408-x]
- 24 Zhang Y, Coogan PF, Palmer JR, Strom BL, Rosenberg L. A case-control study of reproductive factors, female hormone use, and risk of pancreatic cancer. *Cancer Causes Control* 2010; **21**: 473-478 [PMID: 19941157 DOI: 10.1007/s10552-009-9478-9]
- 25 Archibugi L, Graglia B, Valente R, Stigliano S, Roberto M, Capalbo C, Marchetti P, Nigri G, Capurso G. Gynecological and reproductive factors and the risk of pancreatic cancer: A case-control study. *Pancreatol* 2020; **20**: 1149-1154 [PMID: 32800645 DOI: 10.1016/j.pan.2020.07.398]
- 26 Skinner HG, Michaud DS, Colditz GA, Giovannucci EL, Stampfer MJ, Willett WC, Fuchs CS. Parity, reproductive factors, and the risk of pancreatic cancer in women. *Cancer Epidemiol Biomarkers Prev* 2003; **12**: 433-438 [PMID: 12750238]
- 27 Teras LR, Patel AV, Rodriguez C, Thun MJ, Calle EE. Parity, other reproductive factors, and risk of pancreatic cancer mortality in a large cohort of U.S. women (United States). *Cancer Causes Control* 2005; **16**: 1035-1040 [PMID: 16184468 DOI: 10.1007/s10552-005-0332-4]
- 28 Navarro Silvera SA, Miller AB, Rohan TE. Hormonal and reproductive factors and pancreatic cancer risk: a prospective cohort study. *Pancreas* 2005; **30**: 369-374 [PMID: 15841050 DOI: 10.1097/01.mpa.0000160301.59319.ba]
- 29 Prizment AE, Anderson KE, Hong CP, Folsom AR. Pancreatic cancer incidence in relation to female reproductive factors: Iowa Women's Health Study. *JOP* 2007; **8**: 16-27 [PMID: 17228129]
- 30 Dorjgochoo T, Shu XO, Li HL, Qian HZ, Yang G, Cai H, Gao YT, Zheng W. Use of oral contraceptives, intrauterine devices and tubal sterilization and cancer risk in a large prospective study, from 1996 to 2006. *Int J Cancer* 2009; **124**: 2442-2449 [PMID: 19170208 DOI: 10.1002/ijc.24232]
- 31 Duell EJ, Travier N, Lujan-Barroso L, Dossus L, Boutron-Ruault MC, Clavel-Chapelon F, Tumino R, Masala G, Krogh V, Panico S, Ricceri F, Redondo ML, Dorronsoro M, Molina-Montes E, Huerta JM, Barricarte A, Khaw KT, Wareham NJ, Allen NE, Travis R, Siersema PD, Peeters PH, Trichopoulou A, Fragogeorgi E, Oikonomou E, Boeing H, Schuetz M, Canzian F, Lukanova A, Tjønneland A, Roswall N, Overvad K, Weiderpass E, Gram IT, Lund E, Lindkvist B, Johansen D, Ye W, Sund M, Fedirko V, Jenab M, Michaud DS, Riboli E, Bueno-de-Mesquita HB. Menstrual and reproductive factors in women, genetic variation in CYP17A1, and pancreatic cancer risk in the European prospective investigation into cancer and nutrition (EPIC) cohort. *Int J Cancer* 2013; **132**: 2164-2175 [PMID: 23015357 DOI: 10.1002/ijc.27875]
- 32 Lee E, Horn-Ross PL, Rull RP, Neuhausen SL, Anton-Culver H, Ursin G, Henderson KD, Bernstein L. Reproductive factors, exogenous hormones, and pancreatic cancer risk in the CTS. *Am J Epidemiol* 2013; **178**: 1403-1413 [PMID: 24008905 DOI: 10.1093/aje/kwt154]
- 33 Kabat GC, Kamensky V, Rohan TE. Reproductive factors, exogenous hormone use, and risk of pancreatic cancer in postmenopausal women. *Cancer Epidemiol* 2017; **49**: 1-7 [PMID: 28521283 DOI: 10.1016/j.canep.2017.05.002]
- 34 Andersson G, Borgquist S, Jirström K. Hormonal factors and pancreatic cancer risk in women: The Malmö Diet and Cancer Study. *Int J Cancer* 2018; **143**: 52-62 [PMID: 29424426 DOI: 10.1002/ijc.31302]
- 35 Butt SA, Lidegaard Ø, Skovlund C, Hannaford PC, Iversen L, Fielding S, Mørch LS. Hormonal contraceptive use and risk of pancreatic cancer-A cohort study among premenopausal women. *PLoS One* 2018; **13**: e0206358 [PMID: 30376560 DOI: 10.1371/journal.pone.0206358]
- 36 Michels KA, Brinton LA, Pfeiffer RM, Trabert B. Oral Contraceptive Use and Risks of Cancer in the NIH-AARP Diet and Health Study. *Am J Epidemiol* 2018; **187**: 1630-1641 [PMID: 29394309 DOI: 10.1093/aje/kwx388]
- 37 Wahi MM, Shah N, Schrock CE, Rosemurgy AS 2nd, Goldin SB. Reproductive factors and risk of pancreatic cancer in women: a review of the literature. *Ann Epidemiol* 2009; **19**: 103-111 [PMID: 19185803 DOI: 10.1016/j.annepidem.2008.11.003]
- 38 United Nations. United Nations, Department of Economic and Social Affairs, Population Division (2015). Trends in Contraceptive Use Worldwide 2015 (ST/ESA/SER.A/349). [cited 20 January 2021]. Available from: https://www.un.org/development/desa/pd/sites/www.un.org.development.desa.pd/files/undesapd_report_2015_trends_contraceptive_use.pdf
- 39 Lujan-Barroso L, Zhang W, Olson SH, Gao YT, Yu H, Baghurst PA, Bracci PM, Bueno-de-Mesquita HB, Foretova L, Gallinger S, Holcatova I, Janout V, Ji BT, Kurtz RC, La Vecchia C, Lagiou P, Li D, Miller AB, Serraino D, Zatonski W, Risch HA, Duell EJ. Menstrual and Reproductive Factors, Hormone Use, and Risk of Pancreatic Cancer: Analysis From the International Pancreatic Cancer Case-Control Consortium (PanC4). *Pancreas* 2016; **45**: 1401-1410 [PMID: 27088489 DOI: 10.1097/MPA.0000000000000635]



Published by **Baishideng Publishing Group Inc**
7041 Koll Center Parkway, Suite 160, Pleasanton, CA 94566, USA

Telephone: +1-925-3991568

E-mail: bpgoffice@wjgnet.com

Help Desk: <https://www.f6publishing.com/helpdesk>

<https://www.wjgnet.com>

