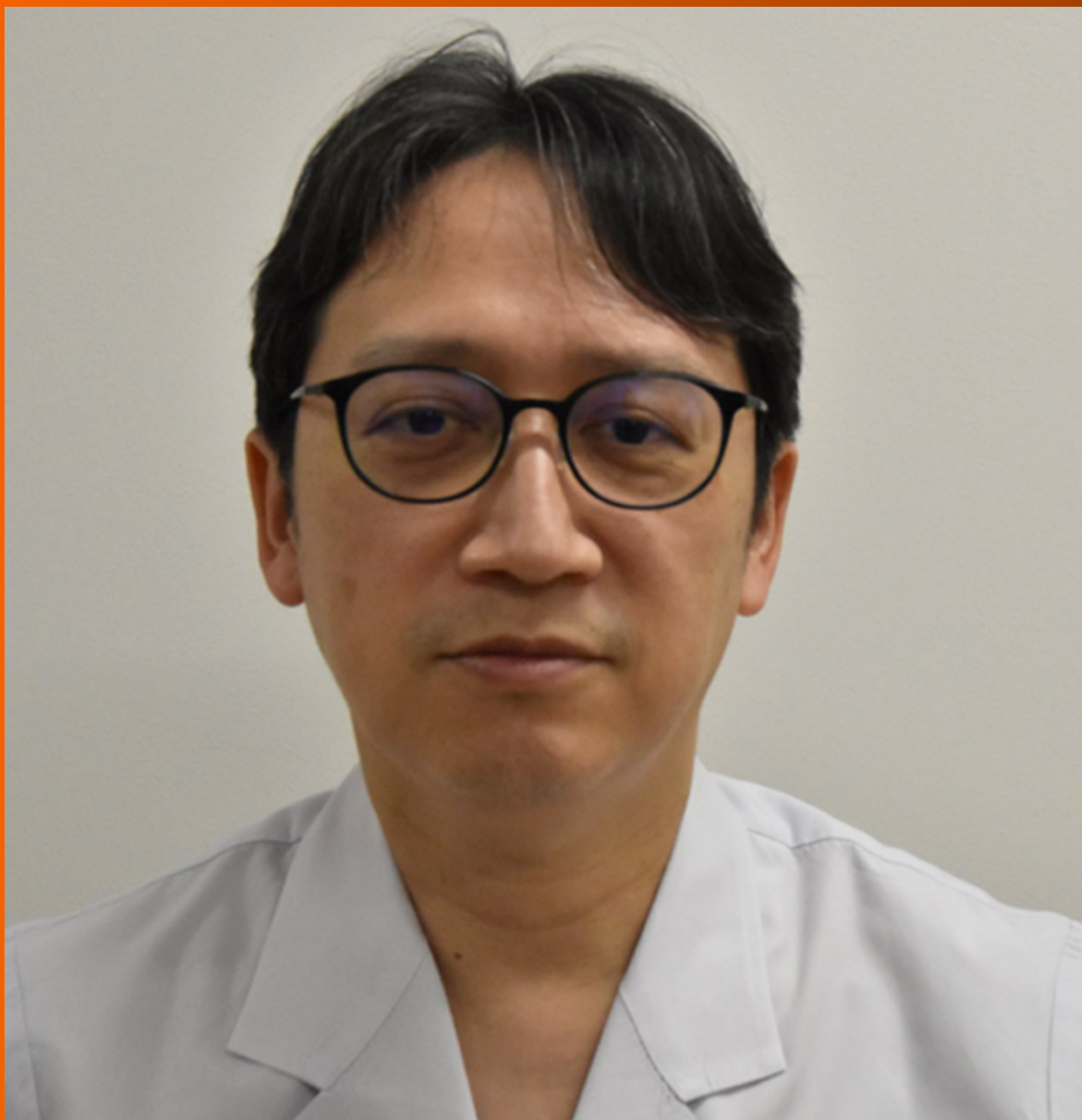


World Journal of *Gastroenterology*

World J Gastroenterol 2021 June 7; 27(21): 2664-2920



FRONTIER

- 2664** Cystic pancreatic lesions, the endless dilemma
Okasha HH, Awad A, El-meligui A, Ezzat R, Aboubakr A, AbouElenin S, El-Husseiny R, Alzamzamy A

REVIEW

- 2681** Status quo and future prospects of artificial neural network from the perspective of gastroenterologists
Cao B, Zhang KC, Wei B, Chen L
- 2710** Molecular alterations in pancreatic tumors
Visani M, Acquaviva G, De Leo A, Sanza V, Merlo L, Maloberti T, Brandes AA, Franceschi E, Di Battista M, Masetti M, Jovine E, Fiorino S, Pession A, Tallini G, de Biase D
- 2727** Toward a new era of hepatitis B virus therapeutics: The pursuit of a functional cure
Tsounis EP, Tourkochristou E, Mouzaki A, Triantos C

MINIREVIEWS

- 2758** Artificial intelligence in perioperative management of major gastrointestinal surgeries
Solanki SL, Pandrowala S, Nayak A, Bhandare M, Ambulkar RP, Shrikhande SV
- 2771** Direct antiviral agents in hepatitis C virus related liver disease: Don't count the chickens before they're hatched
Compagnoni S, Bruno EM, Madonia G, Cannizzaro M, Madonia S
- 2784** Rethinking the Barcelona clinic liver cancer guidelines: Intermediate stage and Child-Pugh B patients are suitable for surgery?
Romano F, Chiarelli M, Garancini M, Scotti M, Zago M, Cioffi G, De Simone M, Cioffi U
- 2795** Potential risk factors for constipation in the community
Werth BL, Christopher SA
- 2818** Requirements for implementation of artificial intelligence in the practice of gastrointestinal pathology
Yoshida H, Kiyuna T

ORIGINAL ARTICLE

Basic Study

- 2834** Fecal microbiota transplantation ameliorates experimental colitis *via* gut microbiota and T-cell modulation
Wen X, Wang HG, Zhang MN, Zhang MH, Wang H, Yang XZ

- 2850** Insight into molecular mechanisms underlying hepatic dysfunction in severe COVID-19 patients using systems biology

Hammoudeh SM, Hammoudeh AM, Bhamidimarri PM, Mahboub B, Halwani R, Hamid Q, Rahmani M, Hamoudi R

Clinical and Translational Research

- 2871** Survival-associated alternative splicing events interact with the immune microenvironment in stomach adenocarcinoma

Ye ZS, Zheng M, Liu QY, Zeng Y, Wei SH, Wang Y, Lin ZT, Shu C, Zheng QH, Chen LC

Retrospective Study

- 2895** Clinicopathological characteristics and prognosis of 232 patients with poorly differentiated gastric neuroendocrine neoplasms

Han D, Li YL, Zhou ZW, Yin F, Chen J, Liu F, Shi YF, Wang W, Zhang Y, Yu XJ, Xu JM, Yang RX, Tian C, Luo J, Tan HY

Observational Study

- 2910** Prediction of hepatic inflammation in chronic hepatitis B patients with a random forest-backward feature elimination algorithm

Zhou JY, Song LW, Yuan R, Lu XP, Wang GQ

ABOUT COVER

Editorial Board Member of *World Journal of Gastroenterology*, Takaaki Arigami, MD, PhD, Associate Professor, Department of Onco-biological Surgery, Kagoshima University Graduate School of Medical and Dental Sciences, 8-35-1 Sakuragaoka, Kagoshima 890-8520, Japan. arigami@m.kufm.kagoshima-u.ac.jp

AIMS AND SCOPE

The primary aim of *World Journal of Gastroenterology* (WJG, *World J Gastroenterol*) is to provide scholars and readers from various fields of gastroenterology and hepatology with a platform to publish high-quality basic and clinical research articles and communicate their research findings online. WJG mainly publishes articles reporting research results and findings obtained in the field of gastroenterology and hepatology and covering a wide range of topics including gastroenterology, hepatology, gastrointestinal endoscopy, gastrointestinal surgery, gastrointestinal oncology, and pediatric gastroenterology.

INDEXING/ABSTRACTING

The WJG is now indexed in Current Contents®/Clinical Medicine, Science Citation Index Expanded (also known as SciSearch®), Journal Citation Reports®, Index Medicus, MEDLINE, PubMed, PubMed Central, and Scopus. The 2020 edition of Journal Citation Report® cites the 2019 impact factor (IF) for WJG as 3.665; IF without journal self cites: 3.534; 5-year IF: 4.048; Ranking: 35 among 88 journals in gastroenterology and hepatology; and Quartile category: Q2. The WJG's CiteScore for 2019 is 7.1 and Scopus CiteScore rank 2019: Gastroenterology is 17/137.

RESPONSIBLE EDITORS FOR THIS ISSUE

Production Editor: *Yan-Jie Ma*; Production Department Director: *Xiang Li*; Editorial Office Director: *Ze-Mao Gong*.

NAME OF JOURNAL

World Journal of Gastroenterology

ISSN

ISSN 1007-9327 (print) ISSN 2219-2840 (online)

LAUNCH DATE

October 1, 1995

FREQUENCY

Weekly

EDITORS-IN-CHIEF

Andrzej S Tarnawski, Subrata Ghosh

EDITORIAL BOARD MEMBERS

<http://www.wjgnet.com/1007-9327/editorialboard.htm>

PUBLICATION DATE

June 7, 2021

COPYRIGHT

© 2021 Baishideng Publishing Group Inc

INSTRUCTIONS TO AUTHORS

<https://www.wjgnet.com/bpg/gerinfo/204>

GUIDELINES FOR ETHICS DOCUMENTS

<https://www.wjgnet.com/bpg/GerInfo/287>

GUIDELINES FOR NON-NATIVE SPEAKERS OF ENGLISH

<https://www.wjgnet.com/bpg/gerinfo/240>

PUBLICATION ETHICS

<https://www.wjgnet.com/bpg/GerInfo/288>

PUBLICATION MISCONDUCT

<https://www.wjgnet.com/bpg/gerinfo/208>

ARTICLE PROCESSING CHARGE

<https://www.wjgnet.com/bpg/gerinfo/242>

STEPS FOR SUBMITTING MANUSCRIPTS

<https://www.wjgnet.com/bpg/GerInfo/239>

ONLINE SUBMISSION

<https://www.f6publishing.com>



Retrospective Study

Clinicopathological characteristics and prognosis of 232 patients with poorly differentiated gastric neuroendocrine neoplasms

Deng Han, Yuan-Liang Li, Zhi-Wei Zhou, Fei Yin, Jie Chen, Fang Liu, Yan-Fen Shi, Wei Wang, Yu Zhang, Xian-Jun Yu, Jian-Ming Xu, Run-Xiang Yang, Chao Tian, Jie Luo, Huang-Ying Tan

ORCID number: Deng Han 0000-0002-2754-7618; Yuan-Liang Li 0000-0003-0774-614X; Zhi-Wei Zhou 0000-0003-1338-1220; Fei Yin 0000-0002-1075-0951; Jie Chen 0000-0001-8113-3515; Fang Liu 0000-0002-6032-431X; Yan-Fen Shi 0000-0001-5348-1205; Wei Wang 0000-0002-3018-1629; Yu Zhang 0000-0001-6573-9402; Xian-Jun Yu 0000-0002-6697-7143; Jian-Ming Xu 0000-0003-4467-6021; Run-Xiang Yang 0000-0003-3684-5892; Chao Tian 0000-0002-6635-1079; Jie Luo 0000-0003-2135-8186; Huang-Ying Tan 0000-0002-6165-5196.

Author contributions: Han D and Li YL made equal contributions to this paper and should be regarded as a co-first authors; Han D collected and analyzed the data and wrote the manuscript; Li YL collected and analyzed the data; Zhou ZW, Yin F, Chen J, Yu XJ, Xu JM, and Yang RX provided data support; Wang W, Zhang Y, and Tian C helped with the follow-up of the patients; Liu F performed endoscopic examinations; Shi YF and Luo J reviewed the specimens for pathological diagnosis; Tan HY designed the study and critically revised the manuscript; all authors read and approved the final manuscript.

Supported by National Key R&D

Deng Han, Yuan-Liang Li, Chao Tian, Huang-Ying Tan, Department of Integrative Oncology, China-Japan Friendship Hospital, Beijing 100029, China

Zhi-Wei Zhou, Wei Wang, Department of Gastric and Pancreatic Surgery, Sun Yat-Sen University Cancer Center, Guangzhou 510060, Guangdong Province, China

Fei Yin, Department of Gastroenterology, Fourth Hospital of Hebei Medical University, Shijiazhuang 050000, Hebei Province, China

Jie Chen, Yu Zhang, Department of Gastroenterology, The First Affiliated Hospital Sun Yat-Sen University, Guangzhou 510080, Guangdong Province, China

Fang Liu, Department of Gastroenterology, China-Japan Friendship Hospital, Beijing 100029, China

Yan-Fen Shi, Jie Luo, Department of Pathology, China-Japan Friendship Hospital, Beijing 100029, China

Xian-Jun Yu, Department of Pancreatic Surgery, Fudan University Shanghai Cancer Center, Shanghai 200032, China

Xian-Jun Yu, Department of Oncology, Shanghai Medical College, Fudan University, Shanghai 200032, China

Xian-Jun Yu, Pancreatic Cancer Institute, Fudan University, Shanghai 200032, China

Xian-Jun Yu, Shanghai Pancreatic Cancer Institute, Shanghai 200032, China

Jian-Ming Xu, Department of Gastrointestinal Oncology, Affiliated Hospital Cancer Center, Academy of Military Medical Sciences, Beijing 100071, China

Run-Xiang Yang, Second Department of Internal Medicine, Yunnan Tumor Hospital, Kunming 650118, Yunnan Province, China

Corresponding author: Huang-Ying Tan, MD, PhD, Chief Physician, Department of Integrative Oncology, China-Japan Friendship Hospital, No. 2 Yinghuayuan East Street, Chaoyang District, Beijing 100029, China. tanhuangying@263.net

Program of China, No.
2019YFB1309704.

Institutional review board

statement: This study was approved by the Clinical Research Ethics Committee of China-Japan Friendship Hospital (No. 2019-24-K18-1).

Informed consent statement: All study participants or their legal guardian provided informed written consent about personal and medical data collection prior to study enrolment.

Conflict-of-interest statement: The authors have no competing interests to declare.

Data sharing statement: The data used to support the findings of this study are available from the various centers.

Open-Access: This article is an open-access article that was selected by an in-house editor and fully peer-reviewed by external reviewers. It is distributed in accordance with the Creative Commons Attribution NonCommercial (CC BY-NC 4.0) license, which permits others to distribute, remix, adapt, build upon this work non-commercially, and license their derivative works on different terms, provided the original work is properly cited and the use is non-commercial. See: <http://creativecommons.org/licenses/by-nc/4.0/>

Manuscript source: Invited manuscript

Specialty type: Gastroenterology and hepatology

Country/Territory of origin: China

Peer-review report's scientific quality classification

Grade A (Excellent): 0
Grade B (Very good): B
Grade C (Good): C
Grade D (Fair): 0
Grade E (Poor): 0

Received: January 26, 2021

Peer-review started: January 26, 2021

Abstract

BACKGROUND

Poorly differentiated gastric neuroendocrine neoplasms (PDGNENs) include gastric neuroendocrine carcinoma (NEC) and mixed adenoneuroendocrine carcinoma, which are highly malignant and rare tumors, and their incidence has increased over the past few decades. However, the clinicopathological features and outcomes of patients with PDGNENs have not been completely elucidated.

AIM

To investigate the clinicopathological characteristics and prognostic factors of patients with PDGNENs.

METHODS

The data from seven centers in China from March 2007 to November 2019 were analyzed retrospectively.

RESULTS

Among the 232 patients with PDGNENs, 191 (82.3%) were male, with an average age of 62.83 ± 9.11 years. One hundred and thirteen (49.34%) of 229 patients had a stage III disease and 86 (37.55%) had stage IV disease. Three (1.58%) of 190 patients had no clinical symptoms, while 187 (98.42%) patients presented clinical symptoms. The tumors were mainly (89.17%) solitary and located in the upper third of the stomach (cardia and fundus of stomach: 115/215, 53.49%). Most lesions were ulcers (157/232, 67.67%), with an average diameter of 4.66 ± 2.77 cm. In terms of tumor invasion, the majority of tumors invaded the serosa (116/198, 58.58%). The median survival time of the 232 patients was 13.50 mo (7, 31 mo), and the overall 1-year, 3-year, and 5-year survival rates were 49%, 19%, and 5%, respectively. According to univariate analysis, tumor number, tumor diameter, gastric invasion status, American Joint Committee on Cancer (AJCC) stage, and distant metastasis status were prognostic factors for patients with PDGNENs. Multivariate analysis showed that tumor number, tumor diameter, AJCC stage, and distant metastasis status were independent prognostic factors for patients with PDGNENs.

CONCLUSION

The overall prognosis of patients with PDGNENs is poor. The outcomes of patients with a tumor diameter > 5 cm, multiple tumors, and stage IV tumors are worse than those of other patients.

Key Words: Poorly differentiated gastric neuroendocrine neoplasms; Clinicopathological characteristics; Prognosis; Distant metastasis; Tumor diameter

©The Author(s) 2021. Published by Baishideng Publishing Group Inc. All rights reserved.

Core Tip: Most patients with poorly differentiated gastric neuroendocrine neoplasms (PDGNENs) present with lymph node metastasis or distant metastasis at the time of diagnosis, and the 5-year overall survival rate of patients with PDGNENs is only 5%. The malignancy of PDGNENs is very high, and the onset is relatively unclear. Routine gastroscopy may help detect PDGNENs as early as possible. Patients with a tumor diameter > 5 cm, multiple tumors, and with American Joint Committee on Cancer stage III or IV have a poor prognosis.

Citation: Han D, Li YL, Zhou ZW, Yin F, Chen J, Liu F, Shi YF, Wang W, Zhang Y, Yu XJ, Xu JM, Yang RX, Tian C, Luo J, Tan HY. Clinicopathological characteristics and prognosis of 232 patients with poorly differentiated gastric neuroendocrine neoplasms. *World J Gastroenterol* 2021; 27(21): 2895-2909

URL: <https://www.wjgnet.com/1007-9327/full/v27/i21/2895.htm>

DOI: <https://dx.doi.org/10.3748/wjg.v27.i21.2895>

First decision: April 5, 2021
Revised: April 14, 2021
Accepted: May 7, 2021
Article in press: May 7, 2021
Published online: June 7, 2021

P-Reviewer: Ezenkwa US
S-Editor: Fan JR
L-Editor: Wang TQ
P-Editor: Ma YJ



INTRODUCTION

Gastric neuroendocrine neoplasms (G-NENs) are a group of heterogeneous and rare malignant tumors originating from peptidergic neurons and neuroendocrine cells. Neuroendocrine neoplasms can occur throughout the body, such as in the gastrointestinal tract, pancreas, liver and gallbladder, thymus, and lung, but the gastrointestinal tract is the most commonly affected site[1]. According to the Surveillance, Epidemiology, and End Results report, the incidence of G-NENs has increased 15-fold in recent decades and reached 4.85/1000000 in 2014, mainly due to the wide application of gastroscopy and the improvement of pathological diagnosis techniques[2,3]. The incidence of poorly differentiated gastric neuroendocrine neoplasms (PDGNENs) is approximately 1/1000000 people, accounting for 16.4% of G-NENs, while the incidence of other tumors in the stomach shows a decreasing trend compared with G-NENs[4].

PDGNENs are divided into functional and nonfunctional tumors according to whether the tumor secretes active hormones and causes characteristic clinical manifestations, and the most common clinical tumors are nonfunctional tumors. The clinical symptoms of nonfunctional PDGNENs lack specificity, and early diagnosis is difficult. Generally, the clinical symptoms are caused by the tumor size or metastasis, mainly including abdominal pain and abdominal distension. Few functional PDGNENs secrete bioactive amines that cause carcinoid syndrome, including skin flushing, diarrhea, wheezing, *etc.* PDGNENs have a worse prognosis than neuroendocrine tumors (NETs), and tumor diameter, stage, location, and treatment are significantly correlated with the prognosis[4]. The 5-year survival rate of patients with well-differentiated G-NENs presenting with distant metastases may reach 35%, while the 5-year survival rate of patients with PDGNENs accompanied by distant metastasis is only 4%[5].

Relatively few large-cohort studies have assessed PDGNENs and limited data is available on their clinicopathological features and outcomes. Therefore, we collected the data of 232 patients with PDGNENs from multiple centers in China and analyzed the clinicopathological characteristics and prognostic factors of these patients, aiming to provide a reference for clinical work on PDGNENs.

MATERIALS AND METHODS

Patient selection

From March 2007 to November 2019, a total of 232 patients with PDGNENs from seven centers in China were enrolled (China-Japan Friendship Hospital, $n = 71$; Sun Yat-Sen University Cancer Center, $n = 54$; The Fourth Affiliated Hospital of Hebei Medical University, $n = 49$; The First Affiliated Hospital Sun Yat-Sen University, $n = 39$; Fudan University Shanghai Cancer Center, $n = 10$; The Fifth Medical Center of the PLA General Hospital, $n = 8$; and Yunnan Tumor Hospital, $n = 1$). The inclusion criteria were as follows: (1) All patients were confirmed to have neuroendocrine carcinoma (NEC) or mixed adenoneuroendocrine carcinoma (MANEC) based on pathology; (2) The clinical data of the patients were relatively complete; (3) The patients underwent regular follow-up; and (4) The patients had no other tumors. This study was conducted in accordance with the provisions of the Declaration of Helsinki and approved by the Clinical Research Ethics Committee of China-Japan Friendship Hospital (No. 2019-24-K18-1).

Tumor grade and stage

The pathological grading standard used in this study adopted the 2019 World Health Organization classification and grading criteria for gastrointestinal pancreatic neuroendocrine tumors[6] and updated the pathological classification and grading of gastroenteropancreatic neuroendocrine tumors. Well-differentiated gastric neuroendocrine tumors were classified into three types. NEC was no longer graded and was divided into only two subtypes: Large cell NEC (LCNEC) and small cell NEC (SCNEC). In addition, MANEC has also been replaced by mixed neuroendocrine and nonneuroendocrine tumors (MiNENs), which contain a wider range of contents. Most of the NEN components in MiNEN are NEC and may also be NETs; in addition to adenocarcinoma, other components, such as squamous cell carcinoma, may also occur in non-NEN components, but each component must account for more than 30% and be classified when reporting[7]. The 8th edition gastric cancer tumor-node-metastasis staging system was used for staging[8].

Follow-up

The patients were followed regularly by an outpatient review, inpatient medical record review, and telephone interview. The starting point was the time when the patient's histopathology yielded a diagnosis of PDGNENs. The end point of the follow-up was the time of death.

Statistical methods

Measurement data are presented as the mean \pm SD, and the follow-up time is reported as the median (interquartile range). Count data are presented as numbers of cases (percentages). The Kaplan-Meier method was used for the survival analysis, and comparisons were performed using the log-rank test. Multivariable survival analyses were also performed to exclude dependent variables using Cox proportional hazards regression models. When the two-tailed *P* value was less than 0.05, the difference was considered statistically significant. Data were analyzed using SPSS 25.0 statistical analysis software (IBM, Chicago, IL, United States).

RESULTS

Clinicopathological characteristics

Among the 232 patients with PDGNENs, 191 (82.3%) were male, with an average age of 62.83 years (range: 30-85 years), and the elderly accounted for 65.5% of the patients (Table 1). The average diameter of the tumor was 4.66 ± 2.77 cm, and the lesions mainly invaded the serosa (116/198, 58.58%). The lymph nodes were positive in 175 (79.78%) of 225 patients, and 86 (37.39%) of 230 patients exhibited distant metastases. In addition, 113 (49.34%) patients presented with a stage II disease and 86 (37.55%) presented with stage IV disease. In terms of endoscopic performance, most of the tumors were mainly located in the cardia (65/215, 30.23%). The majority of tumors were solitary (215/219, 89.17%). In addition, the lesions were mainly ulcers (157/232, 67.67%). Typical gastroscopic findings are shown in Figure 1.

The pathological classification of 232 patients was G3. Of these patients, 41 had LCNEC (17.67%) (Figure 2), 26 had SCNEC (12.21%) (Figure 3), and 38 had MANEC (16.38%) (Figure 4); the subtype was not reported for 127 (54.74%) patients. The average Ki-67 index was 65.34% (Table 1).

The clinical symptoms of 190 patients were recorded. One hundred and eighty-seven (98.42%) patients experienced symptoms, while three (1.58%) patients had no clinical symptoms. The main symptoms were abdominal pain (105/190, 55.26%), abdominal distension (67/190, 35.26%), weight loss (41/190, 21.58%), poor appetite (38/190, 20.00%), and gastrointestinal bleeding (31/190, 16.32%) (Figure 5).

Treatment

Among the 232 patients with PDGNENs, 86 (37.07%) were treated by surgery, 40 (17.24%) were treated with chemotherapy, 92 (38.79%) were treated by surgery plus chemotherapy, and 14 (6.03%) were treated with other treatments (somatostatin analogs, targeted therapy, immunotherapy, traditional Chinese medicine treatment, *etc.*). One hundred and forty-three patients had no distant metastasis or resectable tumors (tumor stage I: 5 cases; stage II: 25 cases; and stage III: 113 cases), of whom 75 were treated by surgery, 6 were treated by chemotherapy, 55 were treated by surgery combined with chemotherapy, and 7 were treated with other treatments. This study analyzed patients without distant metastases and found that the median survival time of the surgery alone group was 18 mo, while the median survival time of the chemotherapy alone group was 11 mo and that of the surgery combined with chemotherapy group was 23 mo ($P < 0.001$) (Figure 6).

Follow-up and outcomes

With a median follow-up time of 13.50 mo (range, 7-31 mo), the overall 1-year, 3-year, and 5-year survival rates were 47%, 15%, and 5%, respectively. The median survival time was 14 mo. The univariate analysis showed that tumor number, tumor diameter, gastric invasion status, American Joint Committee on Cancer (AJCC) stage, and distant metastasis status were correlated with the prognosis (log-rank test $P < 0.05$; Table 1), while age, sex, lymph node metastasis, pathological type, Ki-67 index, and tumor site were not related to the prognosis (log-rank test $P > 0.05$; Table 1 and Figure 6). In the multivariate analysis, the tumor number {multiple *vs* solitary, hazard ratio (HR) [95% confidence interval (CI)]: 3.89 (1.66-9.11), $P < 0.001$ }, tumor diameter [5 cm *vs* 0-5 cm,

Table 1 Clinicopathological characteristics of 232 patients with gastric neuroendocrine carcinoma and univariate analysis

Classification	<i>n</i>	Median survival time/mo	<i>P</i> value
Age (yr)			0.26
< 60	80	12.56 (9.42-14.57)	
≥ 60	152	14.85 (11.80-18.11)	
Gender			0.32
Male	191	14.50 (11.78-16.21)	
Female	41	11.50 (7.94-12.05)	
Tumor number			0.01
Solitary	5	14.02 (11.93-16.06)	
Multiple	214	5.98 (3.40-6.60)	
NR	13	NR	NR
Tumor diameter (cm)			0.01
0-5	105	18.10 (9.35-20.64)	
> 5	99	11.50 (9.41-16.58)	
NR	28	NR	NR
Invasion			0.02
M ¹ /S/MP ²	82	16.27 (12.51-17.49)	
Serosa	116	11.54 (7.54-14.54)	
NR	34	NR	NR
Tumor site			0.09
Cardia	65	16.12 (11.53-18.46)	
Fundus	15	19.88 (3.99-28.00)	
Body	33	15.98 (9.46-20.53)	
Antrum	27	11.80 (8.73-17.26)	
C + F	35	12.50 (7.96-16.03)	
Other	40	15.23 (8.59-23.40)	
NR	17	NR	NR
Pathological type			0.68
Large cell NEC	41	12.96 (12.11-13.84)	
Small cell NEC	26	16.33 (11.30-20.69)	
MANEC	38	12.33 (8.80-15.19)	
NR	127	14.31 (10.40-17.59)	
Ki-67 index			0.61
20%-50%	60	12.69 (7.50-16.49)	
50%-70%	114	14.10 (11.74-16.25)	
> 70%	38	13.23 (0.00-26.80)	
NR	20	NR	NR
Endoscopic performance			0.90
Polypoid	7	15.00 (11.85-16.14)	
Mucosal elevation	28	17.19 (6.99-25.00)	
Ulcer	157	13.69 (10.66-15.33)	
Other	40	11.00 (9.09-10.90)	

Tumor N staging			0.16
N0	50	20.00 (5.30-30.70)	
N1-N3	174	13.11 (9.95-16.00)	
NR	8	NR	NR
Distant metastasis			< 0.001
No	157	17.43 (12.94-21.05)	
Yes	73	11.64 (9.04-12.95)	
NR	2	NR	NR
AJCC stage			< 0.001
I	5	88.26 (36.06-139.94)	
II	25	31.34 (13.56-48.43)	
III	113	16.12 (13.43-18.56)	
IV	86	11.52 (9.05-12.94)	
NR	3	NR	NR
Treatment			0.01
Surgery	86	15.47 (10.87-19.12)	
Chemotherapy	40	12.10 (10.24-13.75)	
Surgery + chemotherapy	92	15.70 (9.99-20.00)	
Other	14	11.00 (0.00-21.68)	

NR: Not reported.

M¹: Mucosa; S: Submucosa.MP²: Muscularis propria.

C + F: Cardia + Fundus; NEC: Neuroendocrine carcinoma; MANEC: Mixed adenoneuroendocrine carcinoma; AJCC: American Joint Committee on Cancer.

HR (95%CI): 1.56 (1.01-2.41), $P = 0.04$], tumor stage [IV *vs* I, HR (95%CI): 5.98 (1.78-20.60), $P < 0.001$; III *vs* I, HR (95%CI): 3.582 (1.07-11.88), $P = 0.03$], and distant metastasis status [yes *vs* no, HR (95%CI): 2.16 (1.41-3.31), $P < 0.001$] were independent risk factors affecting the prognosis (Table 2). The overall 1-year, 3-year, and 5-year survival rates of the 232 patients with PDGNENs are shown in Table 3.

DISCUSSION

PDGNENs are rare tumors that are highly malignant, accounting for 6.9% of gastroenteropancreatic neuroendocrine tumors and 0.3%-1.8% of all malignant gastric tumors[9,10]. According to the Korean literature, PDGNENs account for 2.84% of all NENs and 40% of G-NENs[11]. In this article, the male-to-female ratio reached 4.66:1, and significantly more male patients were identified than female patients. Kim *et al*[12] reported that among 63 patients with G-NECs, 48 were male and 15 were female. Other studies[13-15] have indicated that G-NECs have a sex bias favoring males, but the reason has not been clarified.

PDGNENs are mostly nonfunctional and often detected incidentally. Among the 232 patients with PDGNENs analyzed in our study, all patients had nonfunctional lesions. The main symptoms were similar to those reported in several other studies[15-17]. Early PDGNENs are asymptomatic or have no specific symptoms, such as anemia, abdominal pain, and dyspepsia, and they are unintentionally identified through routine upper gastrointestinal endoscopy. Indeed, regular upper gastrointestinal endoscopy is important and can help to detect PDGNENs, especially in patients with early-stage disease. Advanced PDGNENs are easily detected, mainly because patients show tumor-related features, such as obstruction, bleeding, weight loss, and pain due to infiltration or distant metastasis[16].

Most patients with PDGNENs exhibit advanced tumors at the time of diagnosis, and patients with advanced tumors have worse outcomes than those with early-stage tumors. In our study, the majority of patients had advanced stage tumors at the time of

Table 2 Multivariate Cox regression analysis of poorly differentiated gastric neuroendocrine neoplasms

Parameter	n	HR (95%CI)	P value
Tumor number			
Solitary	5	1	
Multiple	214	3.89 (1.66-9.11)	< 0.001
Tumor diameter			
0-5	105	1	
> 5	99	1.56 (1.01-2.41)	0.04
AJCC stage			
I	5	1	
II	25	2.71 (0.56-8.44)	0.26
III	113	3.582 (1.07-11.88)	0.03
IV	86	5.98 (1.78-20.06)	< 0.001
Distant metastasis			
No	157	1	
Yes	73	2.16 (1.41-3.31)	< 0.001

AJCC: American Joint Committee on Cancer.

diagnosis; 199 (85.78%) patients exhibited lymph node metastasis or distant metastasis, and these values are similar to those of several other studies[18]. Additionally, the survival analysis showed significant differences between patients with stages I-IV. The median survival time of patients with stage I disease was 88 mo, while that of stage IV patients was only 11 mo, and the 3-year overall survival rates were 100% and 11%, respectively. Patients with PDGNENs often benefit if the disease is detected at an early stage. Ishida *et al*[18] reported that the 5-year survival rates of 51 patients with stage I, II, III, or IV G-NECs were 66.7%, 49.3%, 64.3%, and 7.7%, respectively. Tierney *et al*[19] found that the median survival times of patients with stages I-II, III, and IV tumors were 40 mo, 31 mo, and 6 mo, respectively[19]. Furthermore, our study suggested that distant metastasis is an independent prognostic factor, which is consistent with relevant reports[18-21].

Tumor diameter may be relevant to the outcomes in our study. According to the study conducted by Liang *et al*[20], a gastric neuroendocrine tumor diameter greater than 4.2 cm was a poor prognostic factor for patients. Fang *et al*[22] analyzed 156 patients with G-NECs. Univariate analysis revealed a significant difference between patients with a tumor diameter less than 4.5 cm and those with a tumor diameter greater than 4.5 cm, and the 5-year survival rates were 57.9% and 29.3%, respectively. Our data suggest that a tumor diameter greater than 5 cm was a risk factor affecting the prognosis. In clinical practice, the tumor diameter of PDGNENs may be useful to predict the outcome, and patients with a tumor diameter greater than 5 cm should receive more attention.

Tumor site may also be related to the prognosis. In our study, PDGNENs were mainly located in the upper third of the stomach (total: 53.95%), while only 27 (12.56%) PDGNENs were found in the antrum. The values are similar to those of other reports[23-25]. In addition, our data showed a longer median survival time of patients with lesions in the cardia (15.97 mo) and fundus of the stomach (20.00 mo) than that of patients with lesions in the gastric antrum (12.50 mo). Hu *et al*[4] reported a median survival time of patients with G-NECs in the cardia and fundus of 20 mo, which was longer than that of patients with tumors in the antrum (13 mo). Bukhari *et al*[14] observed a better prognosis for patients with tumors in the cardia region than that of patients with tumors in the gastric antrum (median survival: 48.0 mo *vs* 19.0 mo)[14]. To a certain extent, we postulate that the prognosis of PDGNENs in the upper part of the stomach is better than that of tumors in the lower part.

The European Neuroendocrine Tumor Society proposed guidelines for the treatment of NEC in 2016. For patients with no distant metastasis or resectable tumors, surgical treatment can be selected, and adjuvant chemotherapy (AC) or radiotherapy

Table 3 Survival analysis of related factors of 232 patients with poorly-differentiated gastric neoplasms

Classification	Median survival time (mo)	1-yr survival rate (%)	3-yr survival rate (%)	5-yr survival rate (%)
Age (yr)				
< 60	12	37	11	5
≥ 60	15	52	18	5
Gender				
Male	14	52	16	6
Female	10	29	13	3
Tumor number				
Solitary	14	49	17	6
Multiple	5	33	0	0
Tumor diameter (cm)				
0-5	19	58	23	9
> 5	12	40	13	5
Invasion				
M ¹ /S/MP ²	17	60	23	6
Serosal	12	42	13	5
Tumor site				
Cardia	16	58	9	0
Fundus	20	67	17	17
Body	15	57	30	11
Antrum	12	33	0	0
C + F	13	41	6	0
Other	15	57	26	13
Pathological type				
Large cell NEC	16	54	18	9
Small cell NEC	13	34	19	9
MANEC	12	37	11	0
NR	14	52	16	5
Ki-67 index				
20%-50%	12	47	26	6
50%-70%	14	57	12	1
> 70%	13	29	7	0
Endoscopic				
Performance	14	67	17	0
Polypoid	16	54	25	8
Mucosal elevation				
Ulcer	13	48	15	6
Other	10	36	14	3
LN metastasis				
No	18	57	18	6
Yes	13	47	15	5
Distant metastasis				

No	17	62	22	7
Yes	11	28	7	2
AJCC stage				
I	60	100	100	14
II	31	73	41	8
III	16	58	17	5
IV	11	33	11	4
Treatment				
Surgery	15	55	17	9
Chemotherapy	12	29	4	0
S + C	16	57	23	6
Other	10	33	11	0

S + C: Surgery plus Chemotherapy; C + F: Cardia + Fundus.

M¹: Mucosa; S: Submucosa.

MP²: Muscularis propria.

NEC: Neuroendocrine carcinoma; MANEC: Mixed adenoneuroendocrine carcinoma; NR: Not reported; AJCC: American Joint Committee on Cancer.

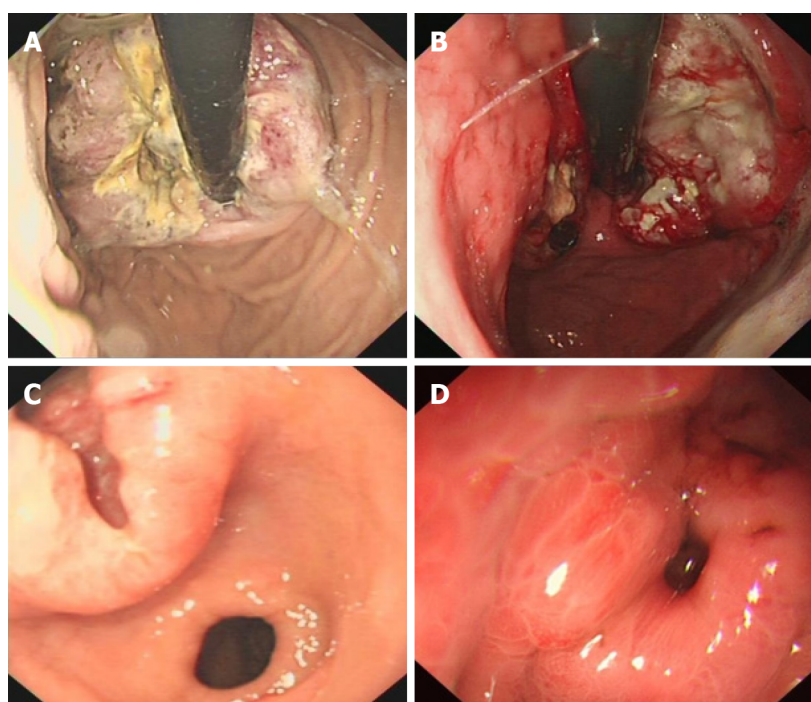


Figure 1 Endoscopic detection of poorly differentiated gastric neuroendocrine neoplasms. A: Circumferential raised lesions on the cardia with uneven surfaces; B: Irregular bumps on the side of the minor curvature of the cardia, accompanied by erosions, ulcers, and unclear boundaries that bled easily when contacted; C: A raised ulcer with a diameter of 4 cm was observed in the small curvature of the antrum; D: A deep ulcer with a diameter of approximately 0.5 cm on the posterior wall of the gastric fundus was observed, and the base was not clear.

can be selected after surgery. Surgery is the only curative treatment for resectable PDGNENs, but the prognosis of patients who undergo surgery alone remains very poor[26]. This study analyzed patients without distant metastases and found that the median survival time of patients treated by surgery combined with chemotherapy (23 mo) was longer than that of patients who were treated by surgery alone (18 mo) or chemotherapy alone (11 mo). Their 3-year overall survival rates were 35%, 22%, and 4%, respectively. Patients with early-stage tumors should choose the proper treatment method, which may improve the quality of life and prolong the survival time. According to a retrospective study including 69 patients with G-NECs in China, the overall 3-year survival rate of patients receiving surgery combined with chemotherapy

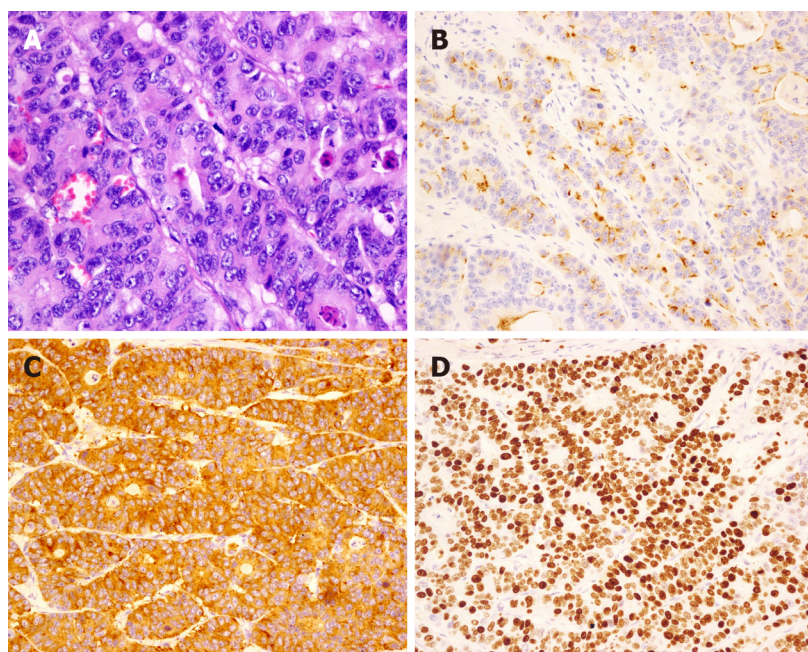


Figure 2 Morphology and immunohistochemical staining of large cell neuroendocrine carcinoma in the cardia. A: Morphology (hematoxylin and eosin staining, × 400); B: Chromogranin A-positive staining [immunohistochemical (IHC), × 200]; C: Synaptophysin-positive staining (IHC, × 200); D: Ki-67 index: 90% (IHC, × 200).

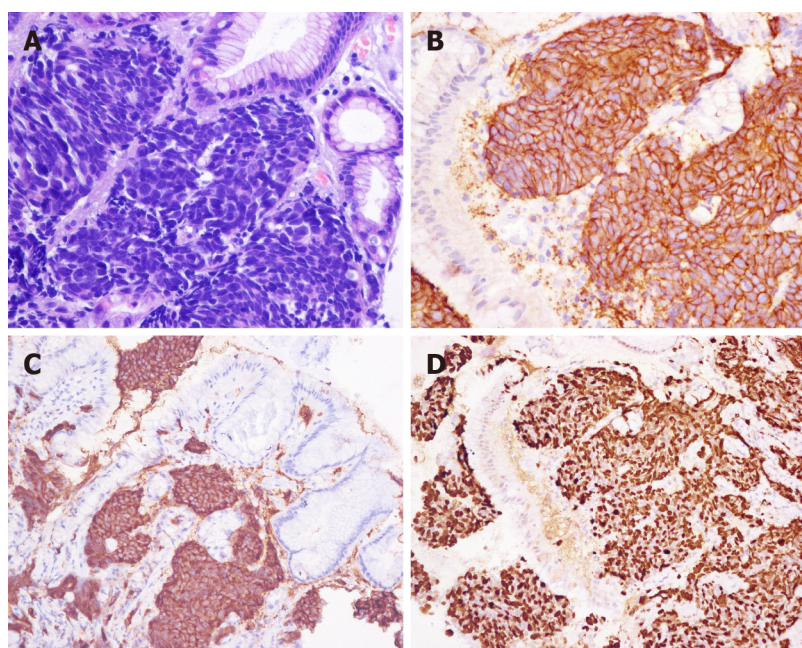


Figure 3 Morphology and immunohistochemical staining of gastric small cell neuroendocrine carcinoma. A: Morphology (hematoxylin and eosin staining, × 400); B: CD56-positive staining [immunohistochemical (IHC), × 400]; C: Synaptophysin-positive staining (IHC, × 200); D: Ki-67 index: 90% (IHC, × 200).

was 68.8%, while that of patients who received surgery alone was only 3.8%[27]. Bukhari *et al*[14] assessed 43 patients with G-NECs. Five patients did not undergo postoperative chemotherapy, and the median survival time of these patients was 15 mo. The median survival time of the remaining 34 patients who received postoperative chemotherapy was 44 mo[14]. Mao *et al*[28] analyzed 806 patients diagnosed with nonmetastatic poorly differentiated colorectal NECs, and 394 (48.9%) of these patients received AC. Kaplan-Meier curves showed that the median overall survival (OS) was significantly longer for patients treated with AC *vs* observation (57.4 mo *vs* 38.2 mo; $P = 0.007$). The Cox proportional hazards regression analysis showed that AC was associated with a significant OS benefit [HR = 0.73, $P < 0.001$][28]. Surgery combined with chemotherapy has advantages and may improve the prognosis of patients

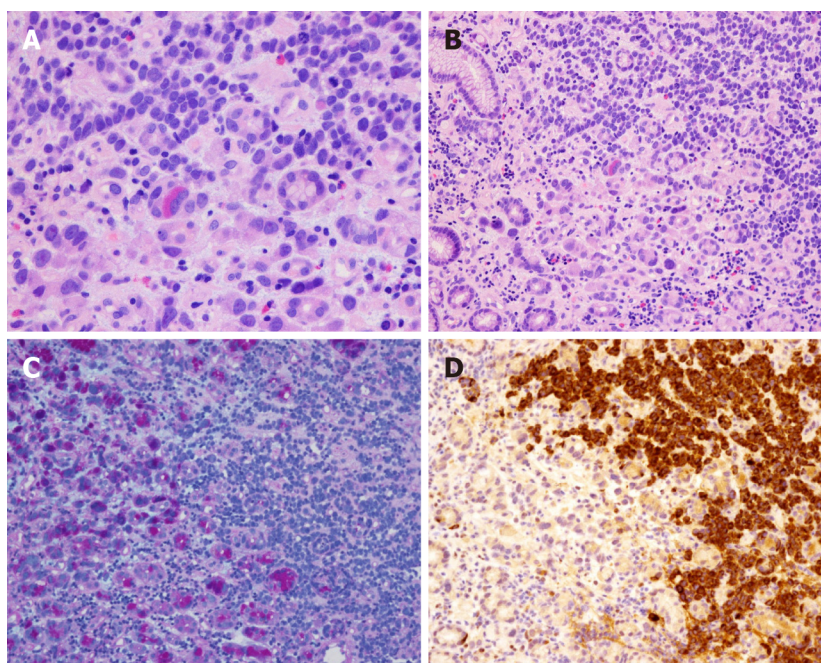


Figure 4 Morphology and immunohistochemical staining of mixed adenoneuroendocrine carcinoma. A and B: Morphology of gastric small cell neuroendocrine carcinoma mixed with adenocarcinoma (hematoxylin and eosin staining, $\times 400$); C: Gastric small cell neuroendocrine carcinoma mixed with adenocarcinoma (hematoxylin and eosin staining, $\times 200$). Alcian blue/periodic acid-Schiff (AB-PAS) staining ($\times 200$): The left side of the picture shows adenocarcinoma (AB-PAS positive); D: Chromogranin A-positive staining ($\times 200$). The right side of the picture shows small cell neuroendocrine carcinoma.

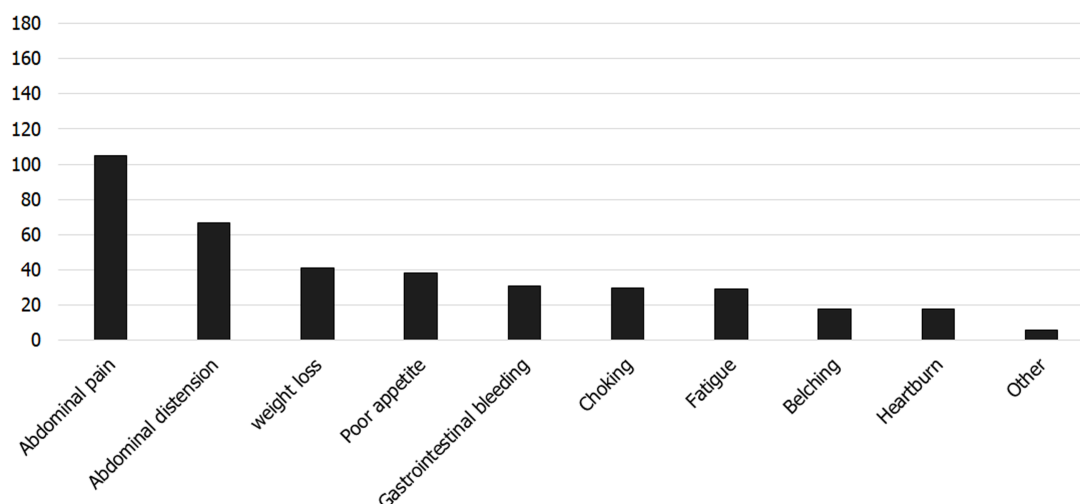


Figure 5 Distribution of nonspecific clinical symptoms in 190 patients with poorly differentiated gastric neuroendocrine neoplasms.

compared with treatment with either approach alone.

As a retrospective study, this study provides novel insights into the diagnosis and treatment of PDGNENs and the risk factors related to the prognosis. However, some limitations should be noted. First, some patients had incomplete basic information. Second, some patients had poor compliance, and a certain number of patients were lost to follow-up (30%). In the future, prospective, multicenter, large-scale trials are still needed to identify independent risk factors that affect the prognosis of patients with PDGNENs.

CONCLUSION

In summary, the majority of patients with PDGNENs had already developed lymph node or distant metastasis at the time of diagnosis, and the prognosis was poor, with a

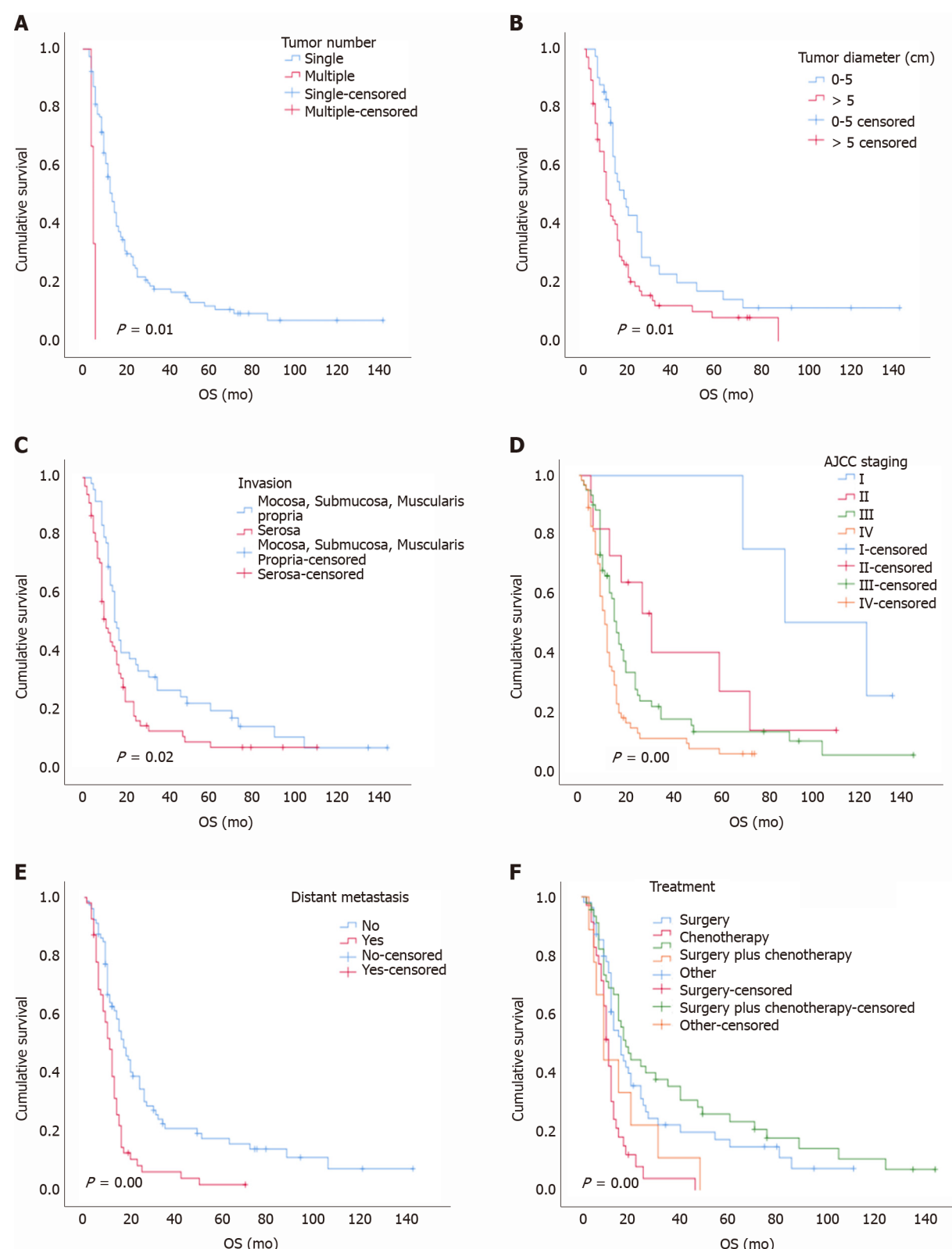


Figure 6 Kaplan-Meier survival analysis ($P < 0.05$). A: Tumor number ($P = 0.01$); B: Tumor diameter ($P = 0.01$); C: Invasion ($P = 0.02$); D: American Joint Committee on Cancer stage ($P < 0.001$); E: Distant metastasis ($P < 0.001$); F: Treatment for patients without distant metastases ($P < 0.001$). AJCC: American Joint Committee on Cancer; OS: Overall survival.

5-year survival rate of 5% and a median survival time of 13.50 mo. Electronic gastroscopy and pathological diagnostic technology have been widely popularized. When people experience the aforementioned symptoms, gastroscopy should be performed in a timely manner. If a lesion is detected, pathology should be performed to determine a clear diagnosis. Clinicians should pay more attention to patients with lesions greater than 5 cm because their prognosis is the worst, with a 5-year survival

rate of 5%. Patients are recommended to undergo AC after surgery. In addition, tumor number, tumor diameter, AJCC stage, and distant metastasis are independent factors affecting the prognosis of patients with PDGNENs.

ARTICLE HIGHLIGHTS

Research background

Poorly differentiated gastric neuroendocrine neoplasm (PDGNEN) is a rare tumor, but its incidence is gradually increasing. The clinical understanding of PDGNENs is limited, and a completely unified conclusion is difficult to determine. This study included 232 patients with PDGNENs from multiple centers in China and statistically analyzed the clinicopathological characteristics and prognostic factors of the patients, aiming to further standardize and systemize the diagnosis and treatment of PDGNENs.

Research motivation

This study aimed to explore the clinicopathological characteristics and prognostic factors for patients with PDGNENs, improve clinicians' awareness of this disease, reduce the misdiagnosis and missed diagnosis of PDGNENs, and achieve early detection, early diagnosis, and early treatment.

Research objectives

This study analyzed the clinicopathological characteristics and prognostic factors of patients with PDGNENs to identify independent risk factors that potentially affect prognosis. By interfering with independent prognostic risk factors for PDGNENs, the quality of life of patients can be further improved and the survival period be prolonged.

Research methods

This study was a retrospective study and included 232 patients with PDGNENs treated at seven centers in China from March 2007 to November 2019. The data were analyzed using the Kaplan-Meier method to evaluate the survival of patients. Single-factor analysis was performed using the log-rank test, and the Cox proportional hazard regression model was used to explore the risk factors that affect patient prognosis.

Research results

Among the 232 patients with PDGNENs, 113 (49.34%) patients had stage III tumors and 86 (37.55%) had stage IV tumors. The tumors were mainly (89.17%) solitary and located in the upper third of the stomach (cardia and fundus of stomach: 115/215, 53.49%). Most lesions were ulcers (157/232, 67.67%), with an average diameter of 4.66 cm. In terms of tumor invasion, the majority of tumors invaded the serosa (116/198, 58.58%). The median survival time of the 232 patients was 13.50 mo (range, 7-31 mo), and the overall 1-year, 3-year, and 5-year survival rates were 49%, 19%, and 5%, respectively.

Research conclusions

According to univariate analysis, tumor number, tumor diameter, gastric invasion status, American Joint Committee on Cancer (AJCC) stage, and distant metastasis status were prognostic factors for patients with PDGNENs. Multivariate analysis showed that tumor number, tumor diameter, AJCC stage, and distant metastasis status were independent prognostic factors for patients with PDGNENs.

Research perspectives

This study provides novel insights into the diagnosis and treatment of PDGNENs and the risk factors related to the prognosis. In the future, prospective, multicenter, large-scale research is still needed.

ACKNOWLEDGEMENTS

We are grateful to all patients and all relevant medical workers who participated in

this study.

REFERENCES

- 1 **Andreasi V**, Partelli S, Muffatti F, Manzoni MF, Capurso G, Falconi M. Update on gastroenteropancreatic neuroendocrine tumors. *Dig Liver Dis* 2021; **53**: 171-182 [PMID: [32912771](#) DOI: [10.1016/j.dld.2020.08.031](#)]
- 2 **Dasari A**, Shen C, Halperin D, Zhao B, Zhou S, Xu Y, Shih T, Yao JC. Trends in the Incidence, Prevalence, and Survival Outcomes in Patients With Neuroendocrine Tumors in the United States. *JAMA Oncol* 2017; **3**: 1335-1342 [PMID: [28448665](#) DOI: [10.1001/jamaoncol.2017.0589](#)]
- 3 **Yang Z**, Wang W, Lu J, Pan G, Pan Z, Chen Q, Liu W, Zhao Y. Gastric Neuroendocrine Tumors (G-Nets): Incidence, Prognosis and Recent Trend Toward Improved Survival. *Cell Physiol Biochem* 2018; **45**: 389-396 [PMID: [29402806](#) DOI: [10.1159/000486915](#)]
- 4 **Hu P**, Bai J, Liu M, Xue J, Chen T, Li R, Kuai X, Zhao H, Li X, Tian Y, Sun W, Xiong Y, Tang Q. Trends of incidence and prognosis of gastric neuroendocrine neoplasms: a study based on SEER and our multicenter research. *Gastric Cancer* 2020; **23**: 591-599 [PMID: [32026156](#) DOI: [10.1007/s10120-020-01046-8](#)]
- 5 **Oronsky B**, Ma PC, Morgensztern D, Carter CA. Nothing But NET: A Review of Neuroendocrine Tumors and Carcinomas. *Neoplasia* 2017; **19**: 991-1002 [PMID: [29091800](#) DOI: [10.1016/j.neo.2017.09.002](#)]
- 6 **Nagtegaal ID**, Odze RD, Klimstra D, Paradis V, Rugge M, Schirmacher P, Washington KM, Carneiro F, Cree IA; WHO Classification of Tumours Editorial Board. The 2019 WHO classification of tumours of the digestive system. *Histopathology* 2020; **76**: 182-188 [PMID: [31433515](#) DOI: [10.1111/his.13975](#)]
- 7 **Assarzadegan N**, Montgomery E. What is New in 2019 World Health Organization (WHO) Classification of Tumors of the Digestive System: Review of Selected Updates on Neuroendocrine Neoplasms, Appendiceal Tumors, and Molecular Testing. *Arch Pathol Lab Med* 2020 [PMID: [32233993](#) DOI: [10.5858/arpa.2019-0665-RA](#)]
- 8 **Doescher J**, Veit JA, Hoffmann TK. [The 8th edition of the AJCC Cancer Staging Manual : Updates in otorhinolaryngology, head and neck surgery]. *HNO* 2017; **65**: 956-961 [PMID: [28717958](#) DOI: [10.1007/s00106-017-0391-3](#)]
- 9 **Tian FX**, Cai YQ, Zhuang LP, Chen MF, Xiu ZB, Zhang Y, Liu H, Liu ZH, Liu GP, Zeng C, Lin FL, Liu J, Huang ST, Zhang LZ, Lin HY. Clinicopathological features and prognosis of patients with gastric neuroendocrine tumors: A population-based study. *Cancer Med* 2018; **7**: 5359-5369 [PMID: [30311450](#) DOI: [10.1002/cam4.1683](#)]
- 10 **Delle Fave G**, O'Toole D, Sundin A, Taal B, Ferolla P, Ramage JK, Ferone D, Ito T, Weber W, Zheng-Pei Z, De Herder WW, Pascher A, Ruszniewski P; Vienna Consensus Conference participants. ENETS Consensus Guidelines Update for Gastroduodenal Neuroendocrine Neoplasms. *Neuroendocrinology* 2016; **103**: 119-124 [PMID: [26784901](#) DOI: [10.1159/000443168](#)]
- 11 **Gastrointestinal Pathology Study Group of Korean Society of Pathologists**. Cho MY, Kim JM, Sohn JH, Kim MJ, Kim KM, Kim WH, Kim H, Kook MC, Park DY, Lee JH, Chang H, Jung ES, Kim HK, Jin SY, Choi JH, Gu MJ, Kim S, Kang MS, Cho CH, Park MI, Kang YK, Kim YW, Yoon SO, Bae HI, Joo M, Moon WS, Kang DY, Chang SJ. Current Trends of the Incidence and Pathological Diagnosis of Gastroenteropancreatic Neuroendocrine Tumors (GEP-NETs) in Korea 2000-2009: Multicenter Study. *Cancer Res Treat* 2012; **44**: 157-165 [PMID: [23091441](#) DOI: [10.4143/crt.2012.44.3.157](#)]
- 12 **Kim BS**, Park YS, Yook JH, Kim BS. Comparison of relapse-free survival in gastric neuroendocrine carcinoma (WHO grade 3) and gastric carcinoma. *Therap Adv Gastroenterol* 2017; **10**: 407-415 [PMID: [28507599](#) DOI: [10.1177/1756283X17697870](#)]
- 13 **Liu DJ**, Fu XL, Liu W, Zheng LY, Zhang JF, Huo YM, Li J, Hua R, Liu Q, Sun YW. Clinicopathological, treatment, and prognosis study of 43 gastric neuroendocrine carcinomas. *World J Gastroenterol* 2017; **23**: 516-524 [PMID: [28210088](#) DOI: [10.3748/wjg.v23.i3.516](#)]
- 14 **Bukhari MH**, Coppola D, Nasir A. Clinicopathologic analysis of primary gastroenteropancreatic poorly differentiated neuroendocrine carcinoma; A ten year retrospective study of 68 cases at Moffit Cancer Center. *Pak J Med Sci* 2020; **36**: 265-270 [PMID: [32063972](#) DOI: [10.12669/pjms.36.2.1336](#)]
- 15 **Sekerci A**, Turk HM, Demir T, Seker M, Akcakaya A, Arici DS. Clinicopathological Features of Gastroenteropancreatic Neuroendocrine Neoplasms. *J Coll Physicians Surg Pak* 2020; **30**: 863-867 [PMID: [32893801](#) DOI: [10.29271/jcpsp.2020.08.863](#)]
- 16 **Xie J**, Zhao Y, Zhou Y, He Q, Hao H, Qiu X, Zhao G, Xu Y, Xue F, Chen J, Su G, Li P, Zheng CH, Huang CM. Predictive Value of Combined Preoperative Carcinoembryonic Antigen Level and Ki-67 Index in Patients With Gastric Neuroendocrine Carcinoma After Radical Surgery. *Front Oncol* 2021; **11**: 533039 [PMID: [33738246](#) DOI: [10.3389/fonc.2021.533039](#)]
- 17 **Ma F**, Wang B, Xue L, Kang W, Li Y, Li W, Liu H, Ma S, Tian Y. Neoadjuvant chemotherapy improves the survival of patients with neuroendocrine carcinoma and mixed adenoneuroendocrine carcinoma of the stomach. *J Cancer Res Clin Oncol* 2020; **146**: 2135-2142 [PMID: [32306127](#) DOI: [10.1007/s00432-020-03214-w](#)]
- 18 **Ishida M**, Sekine S, Fukagawa T, Ohashi M, Morita S, Taniguchi H, Katai H, Tsuda H, Kushima R.

- Neuroendocrine carcinoma of the stomach: morphologic and immunohistochemical characteristics and prognosis. *Am J Surg Pathol* 2013; **37**: 949-959 [PMID: [23759931](#) DOI: [10.1097/PAS.0b013e31828ff59d](#)]
- 19 **Tierney JF**, Poirier J, Chivukula S, Pappas SG, Hertl M, Schadde E, Keutgen X. Primary Tumor Site Affects Survival in Patients with Gastroenteropancreatic and Neuroendocrine Liver Metastases. *Int J Endocrinol* 2019; **2019**: 9871319 [PMID: [30992703](#) DOI: [10.1155/2019/9871319](#)]
 - 20 **Liang WQ**, Zhang W, Qiao S, Wang BH, Wang C, Zhuang ZW, Xi HQ, Cai AZ, Wei B, Chen L. [Clinicopathologic features and prognostic analysis of 240 patients with gastric neuroendocrine neoplasms]. *Zhonghua Wei Chang Wai Ke Za Zhi* 2020; **23**: 38-43 [PMID: [31958929](#) DOI: [10.3760/cma.j.issn.1671-0274.2020.01.007](#)]
 - 21 **Zhang P**, Wang W, Lu M, Zeng C, Chen J, Li E, Tan H, Yu X, Tang Q, Zhao J, Shen L, Li J. Clinicopathological features and outcome for neuroendocrine neoplasms of gastroesophageal junction: A population-based study. *Cancer Med* 2018; **7**: 4361-4370 [PMID: [30062861](#) DOI: [10.1002/cam4.1702](#)]
 - 22 **Fang C**, Wang W, Zhang Y, Feng X, Zeng Y, Li Y, Chen J, Chen Y, Zhou Z. [Clinicopathological features and prognosis of patients with gastric neuroendocrine carcinoma from multiple centers in southern China]. *Zhonghua Wei Chang Wai Ke Za Zhi* 2016; **19**: 1230-1234 [PMID: [27928791](#)]
 - 23 **Li Y**, Wang YF, Tan BB, Er LM, Zhao Q, Fan LQ, Zhang ZD, Liu Y. [Pathological characteristics and survival analysis of 355 patients with gastroenteropancreatic neuroendocrine neoplasms]. *Zhonghua Zhong Liu Za Zhi* 2020; **42**: 426-431 [PMID: [32482035](#) DOI: [10.3760/cma.j.cn112152-112152-20191011-00663](#)]
 - 24 **Morita M**, Taguchi K, Kagawa M, Nakanoko T, Uehara H, Sugiyama M, Ota M, Ikebe M, Sugimachi K, Esaki T, Toh Y. Treatment strategies for neuroendocrine carcinoma of the upper digestive tract. *Int J Clin Oncol* 2020; **25**: 842-850 [PMID: [32036480](#) DOI: [10.1007/s10147-020-01631-y](#)]
 - 25 **Lu J**, Zhao YJ, Zhou Y, He Q, Tian Y, Hao H, Qiu X, Jiang L, Zhao G, Huang CM. On behalf of the Study Group for Gastric Neuroendocrine Tumours. Modified staging system for gastric neuroendocrine carcinoma based on American Joint Committee on Cancer and European Neuroendocrine Tumor Society systems. *Br J Surg* 2020; **107**: 248-257 [PMID: [31971627](#) DOI: [10.1002/bjs.11408](#)]
 - 26 **Garcia-Carbonero R**, Sorbye H, Baudin E, Raymond E, Wiedenmann B, Niederle B, Sedlackova E, Toumpanakis C, Anlauf M, Cwikla JB, Caplin M, O'Toole D, Perren A; Vienna Consensus Conference participants. ENETS Consensus Guidelines for High-Grade Gastroenteropancreatic Neuroendocrine Tumors and Neuroendocrine Carcinomas. *Neuroendocrinology* 2016; **103**: 186-194 [PMID: [26731334](#) DOI: [10.1159/000443172](#)]
 - 27 **Shen C**, Chen H, Yin Y, Han L, Chen J, Tang S, Yin X, Zhou Z, Zhang B, Chen Z. Surgical treatment and prognosis of gastric neuroendocrine neoplasms: a single-center experience. *BMC Gastroenterol* 2016; **16**: 111 [PMID: [27613657](#) DOI: [10.1186/s12876-016-0505-5](#)]
 - 28 **Mao R**, Li K, Cai JQ, Luo S, Turner M, Blazer D 3rd, Zhao H. Adjuvant Chemotherapy Versus Observation Following Resection for Patients With Nonmetastatic Poorly Differentiated Colorectal Neuroendocrine Carcinomas. *Ann Surg* 2019 [PMID: [31478977](#) DOI: [10.1097/SLA.0000000000003562](#)]



Published by **Baishideng Publishing Group Inc**
7041 Koll Center Parkway, Suite 160, Pleasanton, CA 94566, USA

Telephone: +1-925-3991568

E-mail: bpgoffice@wjgnet.com

Help Desk: <https://www.f6publishing.com/helpdesk>

<https://www.wjgnet.com>

