

World Journal of *Gastroenterology*

World J Gastroenterol 2021 June 21; 27(23): 3142-3428



EDITORIAL

- 3142** Pain management in chronic pancreatitis incorporating safe opioid practices: Challenge accepted
Shah I, Sheth SG, Kothari DJ

EVIDENCE REVIEW

- 3148** Pancreatitis and pancreatic cancer: A case of the chicken or the egg
Umans DS, Hoogenboom SA, Sissingh NJ, Lekkerkerker SJ, Verdonk RC, van Hooft JE

REVIEW

- 3158** Pancreatic adenocarcinoma: A review of recent paradigms and advances in epidemiology, clinical diagnosis and management
Gupta N, Yelamanchi R
- 3182** Silencing hepatitis B virus covalently closed circular DNA: The potential of an epigenetic therapy approach
Singh P, Kairuz D, Arbuthnot P, Bloom K
- 3208** COVID-19-associated diarrhea
Megyeri K, Dernovics Á, Al-Luhaibi ZII, Rosztóczy A
- 3223** Assessment of liver disease in patients with chronic hepatitis C and unhealthy alcohol use
Fuster D, García-Calvo X, Zuluaga P, Bolao F, Muga R

MINIREVIEWS

- 3238** Clinical indicators for progression of nonalcoholic steatohepatitis to cirrhosis
Seen TK, Sayed M, Bilal M, Reyes JV, Bhandari P, Lourdasamy V, Al-khazraji A, Syed U, Sattar Y, Bansal R
- 3249** Update on the management and treatment of viral hepatitis
Almeida PH, Matielo CEL, Curvelo LA, Rocco RA, Felga G, Della Guardia B, Boteon YL
- 3262** Large-duct pattern invasive adenocarcinoma of the pancreas—a variant mimicking pancreatic cystic neoplasms: A minireview
Sato H, Liss AS, Mizukami Y
- 3279** Chronic hepatitis B in pregnant women: Current trends and approaches
Belopolskaya M, Avrutin V, Kalinina O, Dmitriev A, Gusev D
- 3290** Viscoelastic tests in liver disease: where do we stand now?
Buliarca A, Horhat A, Mocan T, Craciun R, Procopet B, Sparchez Z

- 3303** Gastrointestinal involvement in paediatric COVID-19 – from pathogenesis to clinical management: A comprehensive review

Calitri C, Fumi I, Ignaccolo MG, Banino E, Benetti S, Lupica MM, Fantone F, Pace M, Garofalo F

- 3317** Can control of gut microbiota be a future therapeutic option for inflammatory bowel disease?

Nishida A, Nishino K, Sakai K, Owaki Y, Noda Y, Imaeda H

ORIGINAL ARTICLE

Basic Study

- 3327** Oncogenic tuftelin 1 as a potential molecular-targeted for inhibiting hepatocellular carcinoma growth

Wu MN, Zheng WJ, Ye WX, Wang L, Chen Y, Yang J, Yao DF, Yao M

- 3342** Conditioned secretome of adipose-derived stem cells improves dextran sulfate sodium-induced colitis in mice

Lee S, Heo J, Ahn EK, Kim JH, Kim YH, Chang HK, Lee SJ, Kim J, Park SJ

Case Control Study

- 3357** Pancreatic enzymes and abdominal adipose tissue distribution in new-onset prediabetes/diabetes after acute pancreatitis

Ko J, Skudder-Hill L, Cho J, Bharmal SH, Petrov MS

Retrospective Cohort Study

- 3372** Effect of type 2 diabetic mellitus in the prognosis of acute-on-chronic liver failure patients in China

Lai RM, Chen TB, Hu YH, Wu G, Zheng Q

Observational Study

- 3386** Preliminary prospective study of real-time post-gastrectomy glycemic fluctuations during dumping symptoms using continuous glucose monitoring

Ri M, Nunobe S, Ida S, Ishizuka N, Atsumi S, Makuuchi R, Kumagai K, Ohashi M, Sano T

Prospective Study

- 3396** Real-world treatment patterns and disease control over one year in patients with inflammatory bowel disease in Brazil

Sassaki LY, Miszputen SJ, Kaiser Junior RL, Catapani WR, Bafutto M, Scotton AS, Zaltman C, Baima JP, Ramos HS, Faria MAG, Gonçalves CD, Guimaraes IM, Flores C, Amarante HMBS, Nones RB, Parente JML, Lima MM, Chebli JM, Ferrari MLA, Campos JF, Sanna MGP, Ramos O, Parra RS, da Rocha JJR, Feres O, Feitosa MR, Caratin RF, Senra JT, Santana GO

SYSTEMATIC REVIEWS

- 3413** Local ablation of pancreatic tumors: State of the art and future perspectives

Granata V, Grassi R, Fusco R, Belli A, Palaia R, Carrafiello G, Miele V, Grassi R, Petrillo A, Izzo F

ABOUT COVER

Editorial Board Member of *World Journal of Gastroenterology*, Paola Ghiorzo, PhD, Professor, Head, Genetics of Rare Cancers Unit, IRCCS Ospedale Policlinico San Martino and Department of Internal Medicine, University of Genoa, L.go R Benzi, Genoa 16129, Italy. paola.ghiorzo@unige.it

AIMS AND SCOPE

The primary aim of *World Journal of Gastroenterology* (WJG, *World J Gastroenterol*) is to provide scholars and readers from various fields of gastroenterology and hepatology with a platform to publish high-quality basic and clinical research articles and communicate their research findings online. WJG mainly publishes articles reporting research results and findings obtained in the field of gastroenterology and hepatology and covering a wide range of topics including gastroenterology, hepatology, gastrointestinal endoscopy, gastrointestinal surgery, gastrointestinal oncology, and pediatric gastroenterology.

INDEXING/ABSTRACTING

The WJG is now indexed in Current Contents®/Clinical Medicine, Science Citation Index Expanded (also known as SciSearch®), Journal Citation Reports®, Index Medicus, MEDLINE, PubMed, PubMed Central, and Scopus. The 2020 edition of Journal Citation Report® cites the 2019 impact factor (IF) for WJG as 3.665; IF without journal self cites: 3.534; 5-year IF: 4.048; Ranking: 35 among 88 journals in gastroenterology and hepatology; and Quartile category: Q2. The WJG's CiteScore for 2019 is 7.1 and Scopus CiteScore rank 2019: Gastroenterology is 17/137.

RESPONSIBLE EDITORS FOR THIS ISSUE

Production Editor: *Yan-Jie Ma*; Production Department Director: *Xiang Li*; Editorial Office Director: *Ze-Mao Gong*.

NAME OF JOURNAL

World Journal of Gastroenterology

ISSN

ISSN 1007-9327 (print) ISSN 2219-2840 (online)

LAUNCH DATE

October 1, 1995

FREQUENCY

Weekly

EDITORS-IN-CHIEF

Andrzej S Tarnawski, Subrata Ghosh

EDITORIAL BOARD MEMBERS

<http://www.wjgnet.com/1007-9327/editorialboard.htm>

PUBLICATION DATE

June 21, 2021

COPYRIGHT

© 2021 Baishideng Publishing Group Inc

INSTRUCTIONS TO AUTHORS

<https://www.wjgnet.com/bpg/gerinfo/204>

GUIDELINES FOR ETHICS DOCUMENTS

<https://www.wjgnet.com/bpg/gerinfo/287>

GUIDELINES FOR NON-NATIVE SPEAKERS OF ENGLISH

<https://www.wjgnet.com/bpg/gerinfo/240>

PUBLICATION ETHICS

<https://www.wjgnet.com/bpg/gerinfo/288>

PUBLICATION MISCONDUCT

<https://www.wjgnet.com/bpg/gerinfo/208>

ARTICLE PROCESSING CHARGE

<https://www.wjgnet.com/bpg/gerinfo/242>

STEPS FOR SUBMITTING MANUSCRIPTS

<https://www.wjgnet.com/bpg/gerinfo/239>

ONLINE SUBMISSION

<https://www.f6publishing.com>



Large-duct pattern invasive adenocarcinoma of the pancreas—a variant mimicking pancreatic cystic neoplasms: A minireview

Hiroki Sato, Andrew Scott Liss, Yusuke Mizukami

ORCID number: Hiroki Sato 0000-0002-6994-1840; Andrew Scott Liss 0000-0002-4040-9172; Yusuke Mizukami 0000-0002-1068-7024.

Author contributions: Sato H wrote and edited the manuscript and collected clinical and pathological data; Mizukami Y reviewed the discussion on pathological findings and genetic alterations in the manuscript; Liss AS revised the manuscript and provided recommendations for the manuscript; all authors have read and approved the final manuscript.

Supported by Japan Society for the Promotion of Science (JSPS) KAKENHI, No. 19K17480 (to Sato H), and No. 20H03655 (Mizukami Y).

Conflict-of-interest statement:

There is no conflict of interest associated with any of the authors who contributed their efforts in this manuscript.

Open-Access: This article is an open-access article that was selected by an in-house editor and fully peer-reviewed by external reviewers. It is distributed in accordance with the Creative Commons Attribution NonCommercial (CC BY-NC 4.0) license, which permits others to distribute, remix, adapt, build upon this work non-commercially,

Hiroki Sato, Yusuke Mizukami, Division of Gastroenterology and Hematology/Oncology, Department of Medicine, Asahikawa Medical University, Asahikawa 0788510, Hokkaido, Japan

Hiroki Sato, Andrew Scott Liss, Department of Surgery, Massachusetts General Hospital and Harvard Medical School, Massachusetts General Hospital, Boston, MA 02114, United States

Yusuke Mizukami, Institute of Biomedical Research, Sapporo Higashi Tokushukai Hospital, Sapporo 0650033, Hokkaido, Japan

Corresponding author: Hiroki Sato, MD, Academic Fellow, Doctor, Research Fellow, Division of Gastroenterology and Hematology/Oncology, Department of Medicine, Asahikawa Medical University, 1-1, Midorigaoka Higashi 2-1, Asahikawa 0788510, Hokkaido, Japan.
hirokisato@asahikawa-med.ac.jp

Abstract

Pancreatic cancer currently has no subtypes that inform clinical decisions; hence, there exists an opportunity to rearrange the morphological and molecular taxonomy that guides a better understanding of tumor characteristics. Nonetheless, accumulating studies to date have revealed the large-duct type variant, a unique subtype of pancreatic ductal adenocarcinoma (PDA) with cystic features. This subtype often radiographically mimics intraductal papillary mucinous neoplasms (IPMNs) and involves multiple small cysts occasionally associated with solid masses. The “bunch-of-grapes” sign, an imaging characteristic of IPMNs, is absent in large-duct PDA. Large-duct PDA defines the mucin profile, and genetic alterations are useful in distinguishing large-duct PDA from IPMNs. Histologically, neoplastic ducts measure over 0.5 mm, forming large ductal elements. Similar to classic PDAs, this subtype is frequently accompanied by perineural invasion and abundant desmoplastic reactions, and *KRAS* mutations in codon 12 are nearly ubiquitous. Despite such morphological similarities with IPMNs, the prognosis of large-duct PDA is equivalent to that of classic PDA. Differential diagnosis is therefore essential.

Key Words: Large-duct pattern invasive carcinoma of the pancreas; Pancreatic ductal adenocarcinoma; Pancreatic cystic disease; Clinicopathological features of pancreatic cancer; Pancreatic cancer subtype

©The Author(s) 2021. Published by Baishideng Publishing Group Inc. All rights reserved.

and license their derivative works on different terms, provided the original work is properly cited and the use is non-commercial. See: <http://creativecommons.org/licenses/by-nc/4.0/>

Manuscript source: Invited manuscript

Specialty type: Gastroenterology and hepatology

Country/Territory of origin: Japan

Peer-review report's scientific quality classification

Grade A (Excellent): A, A
Grade B (Very good): B, B, B
Grade C (Good): 0
Grade D (Fair): 0
Grade E (Poor): 0

Received: January 28, 2021

Peer-review started: January 28, 2021

First decision: February 24, 2021

Revised: March 9, 2021

Accepted: May 17, 2021

Article in press: May 17, 2021

Published online: June 21, 2021

P-Reviewer: Ker CG, Neri V, Thosani N, Wang XB

S-Editor: Fan JR

L-Editor: A

P-Editor: Ma YJ



Core Tip: This review integrates the current knowledge about large-duct pattern invasive adenocarcinoma of the pancreas [large-duct pancreatic ductal adenocarcinoma (PDA)]. This subtype is a rare exocrine pancreatic neoplasm and often mimics intraductal papillary mucinous neoplasms (IPMNs). However, its prognosis is notably different from that of IPMNs, and distinguishing this subtype from IPMNs preoperatively is crucial. We summarized the morphological features and genetic landscape of large-duct PDA, with a primary focus on its differences from other types of pancreatic cystic neoplasms. The information aid in making appropriate decisions when tackling atypical pancreatic cystic neoplasms.

Citation: Sato H, Liss AS, Mizukami Y. Large-duct pattern invasive adenocarcinoma of the pancreas—a variant mimicking pancreatic cystic neoplasms: A minireview. *World J Gastroenterol* 2021; 27(23): 3262-3278

URL: <https://www.wjgnet.com/1007-9327/full/v27/i23/3262.htm>

DOI: <https://dx.doi.org/10.3748/wjg.v27.i23.3262>

INTRODUCTION

Pancreatic cancer is one of the most devastating and fatal diseases in humans, with pancreatic ductal adenocarcinoma (PDA) being the most common exocrine pancreatic neoplasm[1]. With the increase in the number of patients, PDA is expected to become the second leading cause of cancer-related mortality worldwide[2,3]. Advances in multidisciplinary treatment have improved patient survival and have enhanced the effectiveness of modalities for the early detection and identification of cancer subtypes. Despite all efforts to prolong survival, PDA represents one of the worst tumors, with a 5-year overall survival rate of only 2%-9%[4]. Molecular subtyping of this tumor based on genetic signatures has been developed over the past 10 years; nevertheless, the correlation of such information with clinical phenotypes has been somewhat evasive.

Macroscopically, PDA is characterized by yellowish-white masses, usually without hemorrhagic necrosis[5,6]. On histological examination, typical PDA exhibits duct-like glandular structures infiltrating the pancreatic parenchyma, eliciting a strong desmoplastic stromal response[7,8]. The neoplastic cells are columnar to cuboidal and produce various mucins, depending on differentiation and histotypes. Several genetic alterations such as *KRAS* (chromosome 12p), *SMAD4* (chromosome 18q), *CDKN2A* (chromosome 9p), and *TP53* (chromosome 17p) are responsible for causing PDA[9-11] that progresses from low-grade pancreatic intraepithelial neoplasia (PanIN) to higher-grade PanIN and invasive PDA[12-16].

PDA accounts for up to 90% of pancreatic neoplasms and is typically visualized as a solid mass accompanied by abundant desmoplasia[17]. However, tumors with cystic components occasionally compose a small subset in approximately 4%-5% of patients. Colloid carcinoma, a subtype of PDA that is often conjugated to intraductal papillary mucinous neoplasms (IPMNs), is characterized by extracellular mucin pools. Morphologically, colloid carcinoma tends to exhibit a large, well-demarcated cystic lesion[18]. This subtype of PDA originates, at least in part, from IPMNs, which are well-known pancreatic cystic neoplasms[19-21]. IPMNs can be categorized into two morphologically distinct types — namely, the branched type and main duct type[22,23]. Furthermore, multiple subsets, including gastric, intestinal, and pancreatobiliary types, are histologically defined[24]. These types have unique paths during development and progression to invasive tumors[25], and specific genetic alterations observed in IPMNs may be responsible for tumor phenotypes and ultimately influence the patients' outcome[26,27]. In most cases, other pancreatic lesions with cystic features, such as solid cystic neoplasm (SCN)[28,29], mucinous cystic neoplasm (MCN)[30], and solid pseudopapillary neoplasm (SPN)[28], can be easily distinguished from classic PDA[31]; however, atypical imaging findings of patients occasionally impair proper diagnosis. Knowledge and use of relevant genetic alterations unique to these cystic neoplasms may aid patients and physicians in making appropriate decisions.

Recent studies have revealed a histological subtype of PDA with cystic features mimicking pancreatic cystic diseases[32]. This PDA variant is referred to as large-duct pattern invasive adenocarcinoma of the pancreas (large-duct type) and is characterized by invasive PDA forming large, sometimes dilated glands. Nevertheless, this entity

is considered rare and often leads to the misdiagnosis of several pancreatic cystic neoplasms, including IPMNs. This review compares the clinical characteristics, gross morphology and histopathology, and genetic alterations of large-duct PDA and other pancreatic cystic neoplasms.

CLINICAL MANIFESTATIONS

Epidemiology

Large-duct PDA has been estimated to occur in < 7% of all PDA cases. It has been reported in only 63 patients in the past literature[33-35]. Large-duct PDA has been initially diagnosed as IPMN in most cases[34]; hence, the incidence of large-duct PDA has not been clearly recognized. Thus, regarding incidence, large-duct PDA of the pancreas is considered rare[36]. The median age of these patients with large-duct PDA was 63.0 years, and the sex ratio was female-dominant, with a female-to-male ratio of 1.74 (Table 1). The female-to-male ratio was higher in patients with large-duct PDA than in those without large-duct PDA[18]. A previous study reported no specific and unique risk factors.

Tumor location and symptoms

Generally, 60% of classic PDAs develop in the pancreatic head[37], and the majority of the patients exhibit symptoms associated with obstructive jaundice. A summary of previously reported cases with large-duct PDA indicated similar tumor locations (Table 1). Kelly *et al*[34] reported that 2 out of 9 patients with large-duct PDA had jaundice. Other patients had acute pancreatitis ($n = 1$) and abdominal pain ($n = 5$).

IMAGING FINDINGS

Computed tomography imaging

Dynamic contrast-enhanced computed tomography imaging is an essential modality for assessing cystic lesions in the pancreas. Typical PDA presents as a solid and hypovascular tumor, and the most common radiographic finding of PDA is dilatation or stricture of the main pancreatic duct. In contrast, large-duct PDA usually presents as a cluster of small cystic lesions. The diameter of cysts generally measures 5-7 mm, although they sometimes exceed 10 mm[38]. However, large-duct PDA does not have a “bunch-of-grapes” appearance[39], commonly detected in IPMNs. Given the multiple small cysts visualized on cross-sectional images, distinguishing them from SCN is more complicated, particularly in cases with macrocystic-type cysts[40]. SCN typically has a spongy or honeycomb-like appearance; one previous report described a large-duct PDA case showing a honeycomb-like morphology[36]. Large-duct PDA lacks either a star-shaped scar or calcification at the center of the cyst, commonly observed in SCN[38,41,42]. Considering the female-dominated epidemiology, MCN is also a significant differential diagnosis. MCN has an orange-like appearance and sometimes forms cystic lesions measuring over 10 cm; these features are not typical in large-duct PDA[42,43].

Another critical finding suggestive of the large-duct pattern is the slightly diminished enhancement of the parenchyma surrounding cystic components (Figure 1). Similar to typical PDA, such enhancement gradually increases with time after contrast media injection. Furthermore, walled-off necrosis (WON) should be excluded. WON often contains debris and hemorrhage in cysts, resulting in a mixed density change in the fluid[44,45]. These findings are not usually observed in large-duct PDA. Retention cysts often occur along with PDA and are also important in distinguishing it from large-duct PDA. Retention cysts are typically unilocular and tend to be larger than the cysts observed in large-duct PDA[46,47] (Table 2).

Magnetic resonance imaging

Magnetic resonance cholangiopancreatography is another essential modality for diagnosing pancreatic cystic diseases, except in claustrophobic individuals and those with implanted magnetic resonance imaging-unsafe foreign bodies. Crucial findings for large-duct PDA include small cysts in the pancreas[48], with each cyst usually having a diameter of 0.5-0.7 cm[49]. It should be noted that pancreatic duct stricture is more intense than that observed in other cystic neoplasms. Stricture of the main pancreatic duct and bile duct closely associated with a cluster of small cysts is another

Table 1 Patient characteristics of large-duct pancreatic ductal adenocarcinoma

Ref.	Number of cases	Median age	Sex		Tumor location	
			Female	Male	Head	Body or tail
Kelly <i>et al</i> [34], 2012	10	67	6	4	9	1
Bagci <i>et al</i> [33], 2012	28	67	19 ¹	8 ¹	16	11
Kosmahl <i>et al</i> [35], 2005	24	58	15	9	12 ²	9 ²
Total	63	63.0	40	23	37	21

¹One case with missing information on sex.²Three cases with missing information on tumor location.

finding that we may consider when diagnosing large-duct PDA (Figure 2). In making a differential diagnosis of IPMNs, communication with the main pancreatic duct is crucial. Both typical main duct-type and branched duct-type IPMNs communicate with the main pancreatic duct and often show dilatation of the main pancreatic duct [41,50,51].

Moreover, diffusion-weighted imaging and apparent diffusion coefficient map on magnetic resonance cholangiopancreatography is helpful in diagnosing PDA. Considering the high intensity of cystic lesions on T2-weighted images[52,53], diffusion-weighted imaging may not help distinguish large-duct PDA from other pancreatic cystic diseases (Figure 2).

Endoscopic findings

Endoscopic ultrasonography (EUS) has the highest sensitivity for detecting PDA lesions[54], specifically small-sized tumors. Irrespective of the size of PDA, non-neoplastic cystic changes associated with PDA include retention cysts caused by ductal obstruction, and pseudocysts attributable to tumor-associated pancreatitis may be considered to distinguish it from large-duct type tumors[55,56]. A “mucinous clot,” which is a hyperechoic lesion inside cysts, is sometimes visualized using EUS in patients with IPMNs, but not in those with large-duct PDAs[57,58]. Furthermore, large-duct PDAs typically lack mural nodules and papillary growth, signatures of high-risk stigmata, and worrisome features in the Fukuoka criteria[41,59]. Youn *et al* [38] described a case of large-duct PDA with a solid mass inside a dilated glandular cyst[38]. Such atypical findings make a differential diagnosis between large-duct PDAs and IPMNs with high-risk stigmata confusing among endoscopists; nonetheless, surgical resection should be performed for either disease. Considering the multifocality of IPMNs, performing EUS for multifocal lesions, which are not observed in large-duct PDA, is crucial (Table 2)[41,51]. The morphology of “cyst by cyst” appearance can be observed in typical IPMNs using EUS[41].

No report has specifically described EUS-guided fine-needle aspiration (EUS-FNA) in patients with large-duct PDA. In the case of pancreatic tumors with cystic components, concerns related to tumor cell dissemination from the cystic fluid (needle tract seeding)[60] may need to be pointed out (Figure 3). Thus, drawing a distinction between large-duct PDA and IPMN-associated cancer using EUS-FNA can become highly challenging, which will be explained well in the “Pathology” section. The requirements for preoperative histological diagnosis of PDA have increased in the neoadjuvant chemotherapy era; therefore, an ingenious solution for the safe and accurate diagnosis of large-duct PDA using EUS-FNA needs to be considered. No report regarding endoscopic retrograde cholangiopancreatography has described specific findings for large-duct PDA. For tumors developing in the pancreatic head, transpapillary biopsy for histological diagnosis can be useful if massive bile duct invasion is evident.

PATHOLOGY

Macroscopic features

Bagci *et al*[33] described 28 cases of large-duct PDA. Macroscopically, 10 patients had a cyst measuring < 10 mm, whereas 1 patient had a large cyst over 70 mm[33]. Pathologically, each small cyst is a dilated glandular carcinoma. Similarly, Kosmahl *et al*[35].

Table 2 Clinical and morphological characteristics of pancreatic diseases

Ref.	Diseases	Median age	Sex (% females)	Tumor location (% pancreatic head)	Multifocality	Gross appearance	Cyst diameter	Main pancreatic duct communication	Internal structure	Other features	Key genetic alterations
Bagci <i>et al</i> [33], 2012 Kelly <i>et al</i> [34], 2012 Kosmahl <i>et al</i> [35], 2005 Youn <i>et al</i> [38], 2018	Large-duct PDA	63	68.3	56.2	No	Multiple small cysts	0.5–0.7 cm in each cyst	No	Dilatated glandular cyst (duct)	Dilatated glandular cyst (duct) is > 0.5 mm in diameter. Easily invades to the perineural plexus and shows desmoplastic reaction	KRAS (codon 12)
Seidel <i>et al</i> [18], 2002 Adsay <i>et al</i> [24], 2016	Colloid carcinoma	61	52.9	66.7	Infrequent	Single or multiple cysts, well demarcated	1.2–16 cm	No	Well-defined pools of mucin, contained scanty malignant epithelial cells	Associated with intestinal-type IPMN	KRAS, BRAF, PIK3CA; MSIs are more frequently observed than non-colloid cancer PDA
Tanaka <i>et al</i> [41], 2012 Kim and Cho [46], 2015 Laurent <i>et al</i> [51], 2016	Branched duct-type IPMN	65–70	55.2	62.3	Yes	Bunch of grapes	Up to 30 mm for non-invasive IPMN; 30 mm or greater for IPMN with worrisome features	Yes	Cyst by cyst	Main pancreatic duct; normal or dilatated to > 5 mm, suggesting combined type with main duct IPMN	KRAS (codon 12), GNAS, RNF43
Hecht <i>et al</i> [19], 2021 Tanaka <i>et al</i> [41], 2012 Salvia <i>et al</i> [50], 2010	Main duct-type IPMN	60 s	41.3	59.6	Yes	Bunch of grapes	Up to 30 mm for non-invasive IPMN; 30 mm or greater for IPMN with worrisome features	Yes	Cyst by cyst	Main pancreatic duct; partial or diffuse dilatation > 5 mm	KRAS (codon 12), GNAS, RNF43, TP53
Ånonsen <i>et al</i> [42], 2019 Wu <i>et al</i> [80], 2011	SCN	60–70	70	50	No	Spongy or honeycomb-like	3.7–5.1 cm	No	Microcystic or macrocystic		VHL
Ånonsen <i>et al</i> [42], 2019 Yamao <i>et al</i>	MCN	40–50	95	5	Infrequent	Orange-like	1.0–26.4 cm	No	Cyst by cyst	Ovarian-like stroma	KRAS, RNF43

[43], 2011											
Wu <i>et al</i> [80], 2011											
Kim and Cho [46], 2015	Retention cyst	60 s	?	?	No	Unilocular	2.8–12 cm	Yes	No cellular dysplasia	Main pancreatic obstruction in should be observed downstream	?
Assifi <i>et al</i> [47], 2014											
Singhi <i>et al</i> [61], 2012	Pancreatic neuroendocrine neoplasms with cystic changes	50 s	42	24	Infrequent, except MEN1-related neuroendocrine neoplasms	Pinkish-tan to yellowish in color, well demarcated	0.8–18.0 cm	No	Well circumscribed and surrounded by a thin-to-thick fibrous capsule	Larger cysts tend to show hemorrhage	<i>MEN1, PTEN, DAXX, ATRX, MUTYH, CHEK2</i>
Halfdanarson <i>et al</i> [62], 2008											
Scarpa <i>et al</i> [86], 2017											
Tanaka <i>et al</i> [41], 2012	Walled-off necrosis	40–50	25	45	Rare	Variable	Variable	Yes	Unilocular	Main pancreatic duct; normal or irregularly dilated. Observed no later than 6 wk after the occurrence of acute pancreatitis	
Cohen <i>et al</i> [45], 2003											

PDA: Pancreatic ductal adenocarcinoma; IPMN: Intraductal papillary mucinous neoplasms; MCN: Mucinous cystic neoplasm; SCN: Solid cystic neoplasm.

described 24 cases of large-duct PDA and reported a diameter ranging from 4 to 18 mm for each cyst; the gross tumor size was not different from ordinary PDA[35]. The entire cystic lesion size is crucial, and the cystic component of large-duct PDA is less than 100 mm generally. In comparison, the size of cysts in MCN, SCN, or pancreatic neuroendocrine neoplasms (PanNENs) sometimes exceeds 100 mm (Table 2)[61,62].

Microscopic features

Microscopically, large-duct PDA shows dilated glands that range in size from 5 to 10 mm. The term “large duct” is defined as dilatation greater than 0.5 mm among $\geq 50\%$ of glands in PDA[33]. Hematoxylin-eosin staining has revealed some essential pathological findings for large-duct PDA. The nuclei of the epithelial carcinoma (dilated glands) are irregular, wrinkled, and basally located. The cytoplasm exhibits a foamy or microvesicular pattern, and the glands are jagged and irregular[34]. While a papillary growth pattern is typically absent, discrimination of large-duct PDA from other cystic neoplasms, especially gastric-type IPMNs, is crucial[63,64]. In contrast to mucinous carcinoma, large-duct PDA lacks signet ring cells or mucinous lakes[65,66].

Perineural invasion is another important finding for diagnosing large-duct PDA to discriminate from other cystic neoplasms. Bagci *et al*[33] reported that perineural invasion occurred in 88% of large-duct PDAs[33] but was less commonly observed in

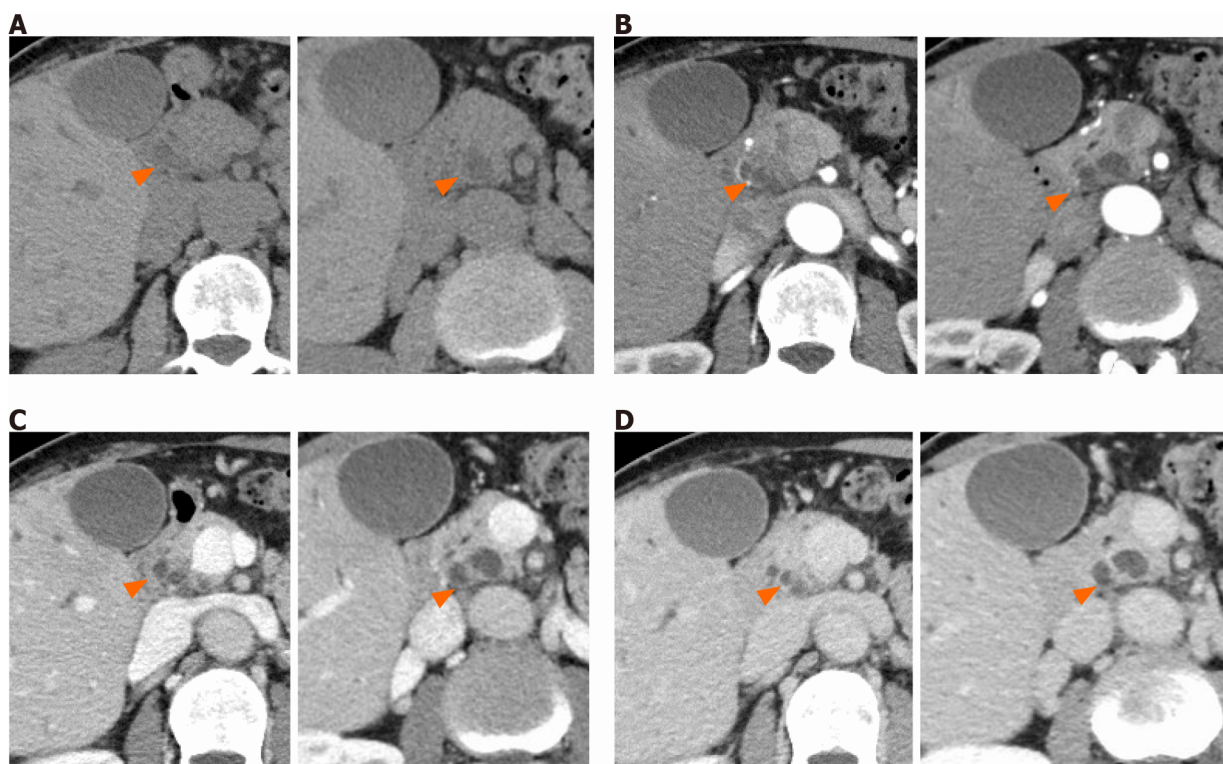


Figure 1 Typical computed tomography imaging of large-duct pancreatic ductal adenocarcinoma. The orange arrowheads show the cystic lesion in large-duct pancreatic ductal adenocarcinoma. A: Plain computed tomography indicates low attenuation area in the pancreas; B: Arterial phase reveals multiple cystic lesions in the pancreatic head without enhancement; C: Portal phase shows multiple cystic lesions in the pancreatic head with parenchymal enhancement; D: Equilibrium phase shows slight ring enhancement of the lesion.

IPMNs, even though the tumor had invasive compartments. In large-duct PDA, the stroma has a rich desmoplastic appearance[33,34]. These features are commonly observed in PDA compared to IPMNs; however, they are more remarkable in large-duct PDA. Additionally, hypercellular stroma or ovarian-like stroma is present in some cases. As for the differential diagnosis of colloid carcinoma or PanNENs, the cysts in these lesions are relatively well-demarcated relative to those in large-duct PDA. PanNENs sometimes have a thick fibrous capsule with hemorrhage[61]. WON usually shows necrotic debris in cysts. Macroscopically, this finding is usually not observed in large-duct PDA and can be a point to distinguish one from other cystic lesions[67].

Immunohistochemistry

Immunohistochemistry (IHC) may be a crucial diagnostic tool that can be utilized to discriminate large-duct PDA from other pancreatic cystic neoplasms[36]. Among the immunostaining widely used in the diagnosis of tumors, mucin (MUC) staining is particularly important and may play a key role in diagnosing large-duct PDA. Gastric-type IPMN exhibits relatively low papillary growth[64] and is typically low grade. However, in tumors with high-grade gastric IPMN, distinction from the large-duct type PDA is sometimes uncertain pathologically. IPMNs present unique MUC staining patterns, depending on the epithelial subtypes[63]. Gastric-type IPMNs show MUC5AC-positive staining patterns and are negative for MUC1, MUC2, and MUC6. Kelly *et al*[34] and Kosmahl *et al*[35] reported MUC staining for large-duct PDAs (Table 3)[34,35]; the positivity rates of MUC1, MUC2, MUC5AC, and MUC6 immunostaining were 79.4%, 8.8%, 78.8%, and 60.6%, respectively. Thus, MUC1 and MUC6 IHC may help make to a differential diagnosis from IPMNs[68].

Furthermore, p53 IHC is beneficial in diagnosing lesions with malignant potential. Bagci *et al*[33] showed that 73% of all large-duct PDAs positively stained for p53. Another point of IHC for large-duct PDA is whether the dilated glands are dilated glandular carcinomas or dilated glands resulting from the occlusion of upper-stream pancreatic ducts. To presume the origin of anatomical localization of the dilated pancreatic ducts, Elastica-Masson staining may be suitable (Figure 4). In addition to the main pancreatic duct, elastin fibers in these normal pancreatic ducts can be stained with Elastica-Masson. Typically, the dilated glands in large-duct PDA are negative

Table 3 Mucin staining profiles of large-duct pancreatic ductal adenocarcinoma

Ref.	MUC1	MUC2	MUC5AC	MUC6
Kelly <i>et al</i> [34], 2012	10/10 (100.0%)	1/10 (90.0%)	9/10 (90.0%)	8/10 (80.0%)
Kosmahl <i>et al</i> [35], 2005	17/24 (70.8%)	2/24 (8.3%)	17/23 (73.1%)	12/23 (52.2%)
Total	27/37 (73.0%)	3/37 (8.1%)	26/36 (72.2%)	20/36 (55.6%)

No. of staining-positive cases/available cases. MUC: Mucin.

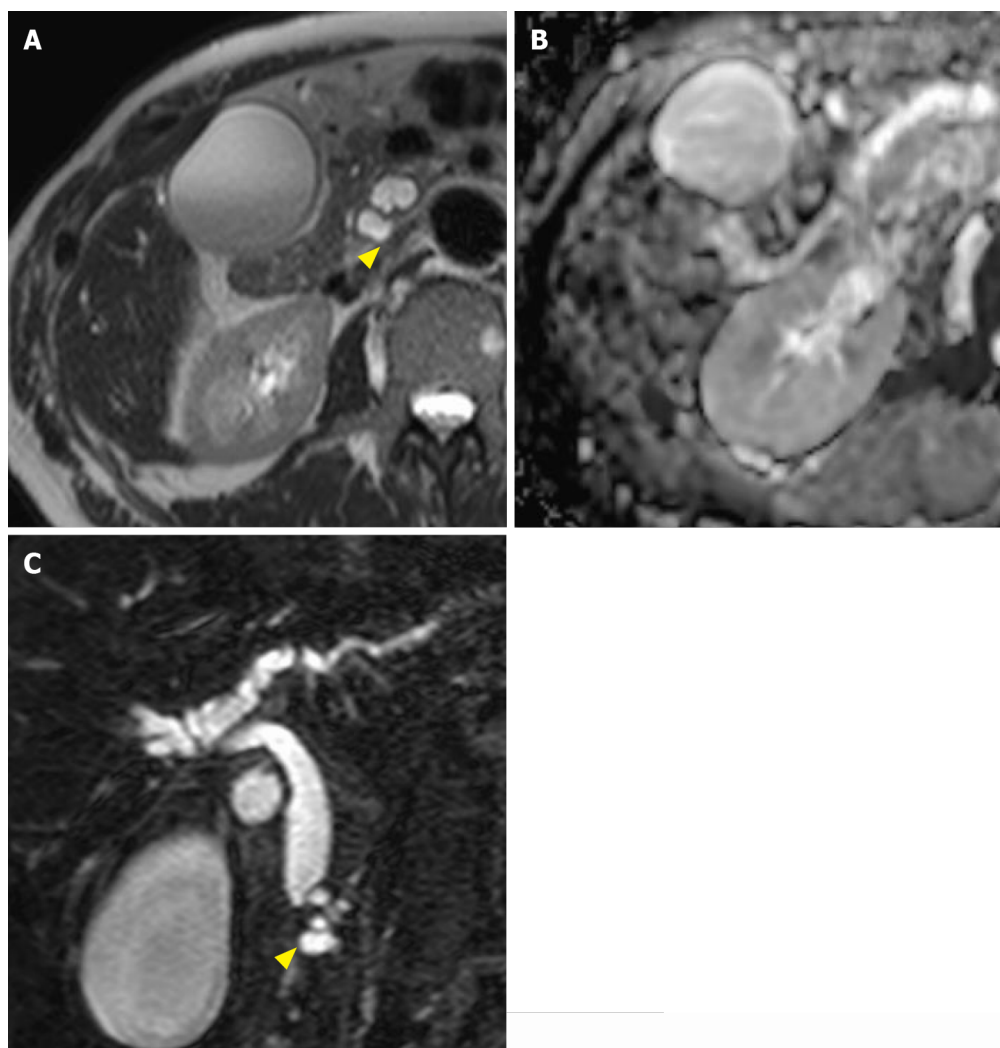


Figure 2 Typical magnetic resonance imaging of large-duct pancreatic ductal adenocarcinoma. The yellow arrowheads show the cystic lesion in large-duct pancreatic ductal adenocarcinoma (PDA). A: T2-weighted imaging reveals high intensity in the large-duct PDA lesion; B: Diffusion-weighted imaging shows no significant signal increase/decrease in the lesion; C: Magnetic resonance cholangiopancreatography (coronal view) reveals multiple cystic lesions in the pancreatic head and compressed bile duct.

for the immunostaining, suggesting they were derived from tumor glands rather than the secondary dilation of the normal main pancreatic duct and associated large branch duct[69].

GENETIC ALTERATIONS

KRAS is mutated in the great majority of PDA, and approximately 90%-95% of PDA patients have major hot spot mutations in codons 12, 13, and 61[9]. This genetic event has been identified at the earliest stages of PanIN, and studies in genetically

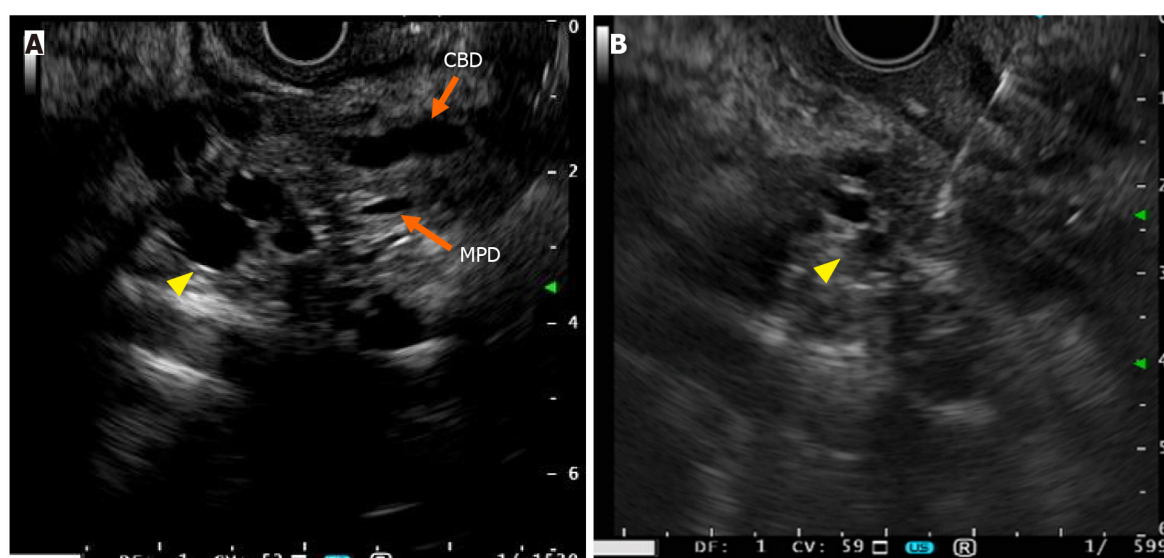


Figure 3 Endoscopic ultrasonography findings of large-duct pancreatic ductal adenocarcinoma. The yellow arrowhead shows the cystic lesion in large-duct pancreatic ductal adenocarcinoma (PDA). A: Endoscopic ultrasonography (EUS) reveals multiple echoic lesions in the pancreatic head; B: EUS-fine-needle aspiration was performed in the parenchyma of the cystic lesion in large-duct PDA. The EUS model used was GF-UE260-AL5 (Olympus, Tokyo, Japan). The ultrasonic diagnostic equipment used was EU-ME2 (Olympus, Tokyo, Japan). CBD: Common bile duct; MPD: Main pancreatic duct.

engineered mice models (GEMMs) indicate that PanINs arise from pancreatic acinar cells that incur *Kras* mutations (Ptf1a-induced *Kras* activation). In the *Kras*^{G12D}-expressing mice, PanIN formation coincides with acinar-to-ductal metaplasia (ADM), characterized by the replacement of acinar cells with cells expressing ductal markers, such as CK19 and the ductal fate determinant Sox9[70]. Further, propensity of ductal and centroacinar cells to give rise to PanINs is demonstrated by GEMM with Sox9^{CreER}-mediated *Kras* activation, although considerably less frequent relative to Ptf1a^{CreER}-induced *Kras* activation[71].

Although observations in these mice models have not been validated in humans, multiple PanIN-like lesions with various grades of atypia can often be observed in the “normal area” of the resected specimens of pancreatic cancer. These lesions are usually solitary and localized in the normal acinar compartment without pancreatitis. However, PanINs associated with a cluster of ADM can also be seen[9]. Nevertheless, it remains to be determined if the PDA, including large-duct type, originated from either differentiated duct or duct-like cells associated with ADM. Such hypothesis may be clarified based on the particular mutation profiles and molecular signature related to cellular origin.

Moreover, genetic analysis is valuable in establishing a differential diagnosis between large-duct PDA and IPMNs. Bagci *et al*[33] conducted a mutation analysis of *KRAS* codon 12, which is the most frequent mutation point in PDA, using specimens from 28 large-duct PDA patients compared to ordinary ductal adenocarcinoma of the pancreas[33]. The results indicated 82% of large-duct PDAs harbored *KRAS* codon 12 mutations, a bit less frequency observed in classic PDAs (generally over 90%)[33,72]. Since the authors utilized slot-blot Southern analysis of polymerase chain reaction-amplified samples, *KRAS* mutation in codon 12 might be missed in case of the tumor with low tumor cellularity, and latest methods may also identify other hotspots at codons 13 and 61. Additionally, IPMN can be initiated by *KRAS* mutation[9], although less frequently than PanIN[73,74]. *KRAS* mutations are observed in 53%-87% of gastric-type IPMNs and approximately 40% in intestinal-type IPMNs. In contrast to PDAs including large-duct type, IPMNs frequently harbor multiple different types of *KRAS* mutations, suggesting poly-clonal diseases[25]. Therefore, specifying the variation in *KRAS* mutation types may be valuable in determining a subset of patients with large-duct PDA.

TP53 gene is also frequently mutated around 75% of pancreatic carcinoma patients [75], and Bagci *et al*[33] reported that abnormal immunostaining of p53 was observed in 73% of large-duct type PDA, a higher frequency relative to classic PDA (60%). Moreover, *TP53* mutation can be seen in 10%-40% of high-grade IPMNs and 40%-60% of IPMN-associated invasive carcinomas[73,76]. Given the strong gain-of-function of particular missense mutations in *TP53* relative to the truncating mutations[77,78], further studies will be required if such *TP53* mutation types are associated with the

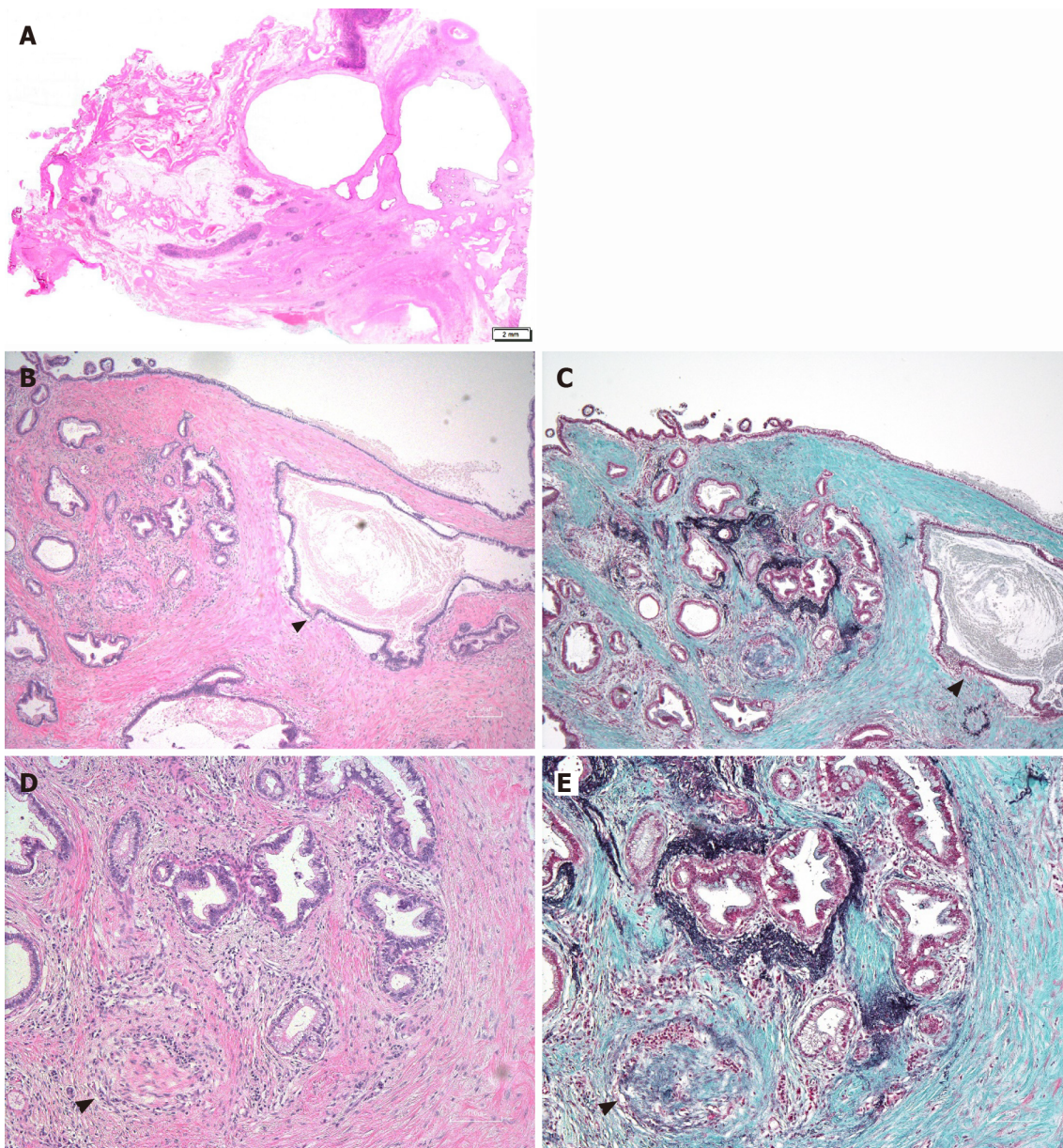


Figure 4 Pathological findings of large-duct pancreatic ductal adenocarcinoma. A: Hematoxylin–eosin (HE) staining of the lesion ($\times 4$); B: HE staining of the lesion ($\times 200$) shows a dilated glandular carcinoma > 0.5 mm in diameter (black arrowhead); C: Elastica–Masson immunohistochemistry ($\times 200$) reveals that the dilated glands lack elastic fibers (black arrowhead); D: HE staining of the carcinoma invading the myelin sheath ($\times 200$; black arrowhead); E: Elastica–Masson immunohistochemistry ($\times 200$) reveals that the dilated glands invading the myelin sheath lack elastic fibers (black arrowheads show the myelin fiber).

tumor phenotypes. *SMAD4* is also inactivated in 55% of PDA cases; of these, 35% are inactivated by homozygous deletion, whereas 20% show loss of one allele[10]. Inactivation of *SMAD4* enhances the rapid progression of *Kras*^{G12D}-initiated mice pancreatic neoplasms, showing IPMN-like phenotypes[79], and a significant fraction of IPMN-associated human pancreatic cancer harbors *SMAD4* mutation and the abnormal immunostaining[25]. Whether *SMAD4* inactivation can influence the progression or promotion of large-duct PDA remains unclear.

GNAS mutations are unique to IPMNs[80,81] and are more frequently identified in intestinal-type IPMNs than in gastric- and pancreatobiliary-type IPMNs[9]. The mutation can progress to IPMN-associated PDA, and recent studies demonstrated that about 8%-11% of pancreatic cancers[9], including cases considered not related explicitly to IPMN, harbor *GNAS* mutations or amplifications. Since *GNAS* mutation can lead to entirely distinct transcriptional and metabolic reprogramming to *KRAS*-driven circuitry[82], identification of *GNAS* mutations may discriminate large-duct PDA from IPMN-related pancreatic cancer.

RNF43 encodes an E3 ubiquitin ligase. *RNF43* mutations are observed in IPMNs and MCNs and are detected in approximately 50% of all IPMNs[83]. Nonetheless, a recent

meta-analysis has suggested that *RNF43* mutations are not associated with clinicopathologic parameters in patients with IPMN[83,84]. Approximately 50% of MCNs present *RNF43* mutations, including loss of heterozygosity[85]. Other cystic neoplasms in the pancreas exhibit specific genetic mutations. Genetic alterations such as *VHL* mutations and loss of heterozygosity in SCN, *CTNNB1*, and *PIK3CA* mutations in SPN and PanNEN-associated mutations (*MEN1*, *PTEN*, *DAXX*, and *ATRX*) have been specifically identified in SCNs and PanNENs, particularly in cases with cystic components resembling retention cysts[85,86] (Table 2).

Further genetic analysis should be performed in the large-duct PDA, considering whether the cellular origin of the large-duct PDA was the branch or main pancreatic duct and pathways of carcinogenesis[87,88]. Whole-genome sequencing may be helpful in determining the genes responsible for forming large-duct glands[87,89].

TREATMENT AND PROGNOSIS

Large-duct PDA has been recognized as an uncommon subtype of PDA. Hence, in previous reports, large-duct PDA was mainly diagnosed from surgically resected specimens[33,34]. Preoperative diagnosis was variable, including IPMN, MCN, and "PDA with solid and cystic mass." Furthermore, the patients in these reports were diagnosed at an advanced stage, and the period of survival after resections was about 7-16 mo. These reports were published in the era when adjuvant or neoadjuvant chemotherapy for PDA was not established. The outcome is worse than that of surgically resected IPMNs, reported as 37.0 mo[90], and chemotherapy is not generally considered if the invasive component in IPMN-associated cancer is not evident. Therefore, distinguishing large-duct PDA from other cystic neoplasms, including IPMNs, is essential. Accurate histological and genomic information related to the tumor will help decide between appropriate therapeutic options before surgery[91-93]. Currently, how standard chemotherapy against PDAs, including both adjuvant and neoadjuvant chemotherapy, can effectively eradicate large-duct PDAs remains unclear.

CONCLUSION

Large-duct PDA is a subtype of PDA that mimics IPMNs or other pancreatic cystic neoplasms. Given the rarity of this disease, the diagnostic approach is sometimes challenging. Considering the estimated prognosis of the patients, it is crucial to distinguish large-duct PDAs from IPMNs using macroscopic and pathological findings. When an atypical cystic lesion is identified in the pancreas, both symptomatic and asymptomatic, the differential diagnosis should include large-duct PDA. Given their advantages, genetic analysis of PDAs and IPMNs, exploration of *KRAS* mutations, and mutation profiling of other cancer-related genes may help establish an accurate diagnosis.

ACKNOWLEDGEMENTS

We thank Hiroyuki Maguchi at Teine Keijinkai Hospital for providing support in the pathological and clinical diagnoses, as well as the members of the Department of Medicine at Asahikawa Medical University for carefully reading and examining the manuscript.

REFERENCES

- 1 Fitzgerald TL, Hickner ZJ, Schmitz M, Kort EJ. Changing incidence of pancreatic neoplasms: a 16-year review of statewide tumor registry. *Pancreas* 2008; 37: 134-138 [PMID: 18665072 DOI: 10.1097/MPA.0b013e318163a329]
- 2 Rahib L, Smith BD, Aizenberg R, Rosenzweig AB, Fleshman JM, Matrisian LM. Projecting cancer incidence and deaths to 2030: the unexpected burden of thyroid, liver, and pancreas cancers in the United States. *Cancer Res* 2014; 74: 2913-2921 [PMID: 24840647 DOI: 10.1158/0008-5472.CAN-14-0155]
- 3 Goess R, Friess H. A look at the progress of treating pancreatic cancer over the past 20 years. *Expert*

- Rev Anticancer Ther* 2018; **18**: 295-304 [PMID: 29334794 DOI: 10.1080/14737140.2018.1428093]
- 4 **McGuigan A**, Kelly P, Turkington RC, Jones C, Coleman HG, McCain RS. Pancreatic cancer: A review of clinical diagnosis, epidemiology, treatment and outcomes. *World J Gastroenterol* 2018; **24**: 4846-4861 [PMID: 30487695 DOI: 10.3748/wjg.v24.i43.4846]
 - 5 **Schlitter AM**, Jesinghaus M, Jäger C, Konukiewicz B, Muckenhuber A, Demir IE, Bahra M, Denkert C, Friess H, Kloppel G, Ceyhan GO, Weichert W. pT but not pN stage of the 8th TNM classification significantly improves prognostication in pancreatic ductal adenocarcinoma. *Eur J Cancer* 2017; **84**: 121-129 [PMID: 28802189 DOI: 10.1016/j.ejca.2017.06.034]
 - 6 **He J**, Ahuja N, Makary MA, Cameron JL, Eckhauser FE, Choti MA, Hruban RH, Pawlik TM, Wolfgang CL. 2564 resected periampullary adenocarcinomas at a single institution: trends over three decades. *HPB (Oxford)* 2014; **16**: 83-90 [PMID: 23472829 DOI: 10.1111/hpb.12078]
 - 7 **Schlitter AM**, Segler A, Steiger K, Michalski CW, Jäger C, Konukiewicz B, Pfarr N, Endris V, Bettstetter M, Kong B, Regel I, Kleeff J, Klöppel G, Esposito I. Molecular, morphological and survival analysis of 177 resected pancreatic ductal adenocarcinomas (PDACs): Identification of prognostic subtypes. *Sci Rep* 2017; **7**: 41064 [PMID: 28145465 DOI: 10.1038/srep41064]
 - 8 **Hruban RH**, Maitra A, Kern SE, Goggins M. Precursors to pancreatic cancer. *Gastroenterol Clin North Am* 2007; **36**: 831-849, vi [PMID: 17996793 DOI: 10.1016/j.gtc.2007.08.012]
 - 9 **Patra KC**, Bardeesy N, Mizukami Y. Diversity of Precursor Lesions For Pancreatic Cancer: The Genetics and Biology of Intraductal Papillary Mucinous Neoplasm. *Clin Transl Gastroenterol* 2017; **8**: e86 [PMID: 28383565 DOI: 10.1038/ctg.2017.3]
 - 10 **Hahn SA**, Schutte M, Hoque AT, Moskaluk CA, da Costa LT, Rozenblum E, Weinstein CL, Fischer A, Yeo CJ, Hruban RH, Kern SE. DPC4, a candidate tumor suppressor gene at human chromosome 18q21.1. *Science* 1996; **271**: 350-353 [PMID: 8553070 DOI: 10.1126/science.271.5247.350]
 - 11 **Caldas C**, Hahn SA, da Costa LT, Redston MS, Schutte M, Seymour AB, Weinstein CL, Hruban RH, Yeo CJ, Kern SE. Frequent somatic mutations and homozygous deletions of the p16 (MTS1) gene in pancreatic adenocarcinoma. *Nat Genet* 1994; **8**: 27-32 [PMID: 7726912 DOI: 10.1038/ng0994-27]
 - 12 **Real FX**. A "catastrophic hypothesis" for pancreas cancer progression. *Gastroenterology* 2003; **124**: 1958-1964 [PMID: 12806629 DOI: 10.1016/s0016-5085(03)00389-5]
 - 13 **Hata T**, Suenaga M, Marchionni L, Macgregor-Das A, Yu J, Shindo K, Tamura K, Hruban RH, Goggins M. Genome-Wide Somatic Copy Number Alterations and Mutations in High-Grade Pancreatic Intraepithelial Neoplasia. *Am J Pathol* 2018; **188**: 1723-1733 [PMID: 29684357 DOI: 10.1016/j.ajpath.2018.03.012]
 - 14 **Wilentz RE**, Iacobuzio-Donahue CA, Argani P, McCarthy DM, Parsons JL, Yeo CJ, Kern SE, Hruban RH. Loss of expression of Dpc4 in pancreatic intraepithelial neoplasia: evidence that DPC4 inactivation occurs late in neoplastic progression. *Cancer Res* 2000; **60**: 2002-2006 [PMID: 10766191]
 - 15 **Cáceres M**, Quesada R, Iglesias M, Real FX, Villamonte M, de Villarreal JM, Pérez M, Andaluz A, Moll X, Berjano E, Dorcaratto D, Sánchez-Velázquez P, Grande L, Burdío F. Pancreatic duct ligation reduces premalignant pancreatic lesions in a Kras model of pancreatic adenocarcinoma in mice. *Sci Rep* 2020; **10**: 18344 [PMID: 33110094 DOI: 10.1038/s41598-020-74947-4]
 - 16 **Kaneda A**, Matsusaka K, Aburatani H, Fukayama M. Epstein-Barr virus infection as an epigenetic driver of tumorigenesis. *Cancer Res* 2012; **72**: 3445-3450 [PMID: 22761333 DOI: 10.1158/0008-5472.CAN-11-3919]
 - 17 **Di Maggio F**, El-Shakankery KH. Desmoplasia and Biophysics in Pancreatic Ductal Adenocarcinoma: Can We Learn From Breast Cancer? *Pancreas* 2020; **49**: 313-325 [PMID: 32168249 DOI: 10.1097/MPA.0000000000001504]
 - 18 **Seidel G**, Zahurak M, Iacobuzio-Donahue C, Sohn TA, Adsay NV, Yeo CJ, Lillemoe KD, Cameron JL, Hruban RH, Wilentz RE. Almost all infiltrating colloid carcinomas of the pancreas and periampullary region arise from in situ papillary neoplasms: a study of 39 cases. *Am J Surg Pathol* 2002; **26**: 56-63 [PMID: 11756769 DOI: 10.1097/00000478-200201000-00006]
 - 19 **Hecht EM**, Khatri G, Morgan D, Kang S, Bhosale PR, Francis IR, Gandhi NS, Hough DM, Huang C, Luk L, Megibow A, Ream JM, Sahani D, Yaghami V, Zaheer A, Kaza R. Intraductal papillary mucinous neoplasm (IPMN) of the pancreas: recommendations for Standardized Imaging and Reporting from the Society of Abdominal Radiology IPMN disease focused panel. *Abdom Radiol (NY)* 2021; **46**: 1586-1606 [PMID: 33185741 DOI: 10.1007/s00261-020-02853-4]
 - 20 **Nasca V**, Chiaravalli M, Piro G, Esposito A, Salvatore L, Tortora G, Corbo V, Carbone C. Intraductal Pancreatic Mucinous Neoplasms: A Tumor-Biology Based Approach for Risk Stratification. *Int J Mol Sci* 2020; **21** [PMID: 32887490 DOI: 10.3390/ijms21176386]
 - 21 **Zaccari P**, Cardinale V, Severi C, Pedica F, Carpino G, Gaudio E, Doglioni C, Petrone MC, Alvaro D, Arcidiacono PG, Capurso G. Common features between neoplastic and preneoplastic lesions of the biliary tract and the pancreas. *World J Gastroenterol* 2019; **25**: 4343-4359 [PMID: 31496617 DOI: 10.3748/wjg.v25.i31.4343]
 - 22 **Lu C**, Xu CF, Wan XY, Zhu HT, Yu CH, Li YM. Screening for pancreatic cancer in familial high-risk individuals: A systematic review. *World J Gastroenterol* 2015; **21**: 8678-8686 [PMID: 26229410 DOI: 10.3748/wjg.v21.i28.8678]
 - 23 **Chang YR**, Park JK, Jang JY, Kwon W, Yoon JH, Kim SW. Incidental pancreatic cystic neoplasms in an asymptomatic healthy population of 21,745 individuals: Large-scale, single-center cohort study. *Medicine (Baltimore)* 2016; **95**: e5535 [PMID: 28002329 DOI: 10.1097/MD.0000000000005535]
 - 24 **Adsay V**, Mino-Kenudson M, Furukawa T, Basturk O, Zamboni G, Marchegiani G, Bassi C, Salvia

- R, Malleo G, Paiella S, Wolfgang CL, Matthaei H, Offerhaus GJ, Adham M, Bruno MJ, Reid MD, Krasinskas A, Klöppel G, Ohike N, Tajiri T, Jang KT, Roa JC, Allen P, Fernández-del Castillo C, Jang JY, Klimstra DS, Hruban RH; Members of Verona Consensus Meeting, 2013. Pathologic Evaluation and Reporting of Intraductal Papillary Mucinous Neoplasms of the Pancreas and Other Tumoral Intraepithelial Neoplasms of Pancreatobiliary Tract: Recommendations of Verona Consensus Meeting. *Ann Surg* 2016; **263**: 162-177 [PMID: [25775066](#) DOI: [10.1097/SLA.0000000000001173](#)]
- 25 **Omori Y**, Ono Y, Tanino M, Karasaki H, Yamaguchi H, Furukawa T, Enomoto K, Ueda J, Sumi A, Katayama J, Muraki M, Taniue K, Takahashi K, Ambo Y, Shinohara T, Nishihara H, Sasajima J, Maguchi H, Mizukami Y, Okumura T, Tanaka S. Pathways of Progression From Intraductal Papillary Mucinous Neoplasm to Pancreatic Ductal Adenocarcinoma Based on Molecular Features. *Gastroenterology* 2019; **156**: 647-661. e2 [PMID: [30342036](#) DOI: [10.1053/j.gastro.2018.10.029](#)]
- 26 **Schönleben F**, Qiu W, Bruckman KC, Ciau NT, Li X, Lauerman MH, Frucht H, Chabot JA, Allendorf JD, Remotti HE, Su GH. BRAF and KRAS gene mutations in intraductal papillary mucinous neoplasm/carcinoma (IPMN/IPMC) of the pancreas. *Cancer Lett* 2007; **249**: 242-248 [PMID: [17097223](#) DOI: [10.1016/j.canlet.2006.09.007](#)]
- 27 **Tan MC**, Basturk O, Brannon AR, Bhanot U, Scott SN, Bouvier N, LaFemina J, Jarnagin WR, Berger MF, Klimstra D, Allen PJ. GNAS and KRAS Mutations Define Separate Progression Pathways in Intraductal Papillary Mucinous Neoplasm-Associated Carcinoma. *J Am Coll Surg* 2015; **220**: 845-854. e1 [PMID: [25840541](#) DOI: [10.1016/j.jamcollsurg.2014.11.029](#)]
- 28 **Chagas VL**, Rosman FC, Carvalho MDGDC. Solid pseudopapillary neoplasia of the pancreas: a review. *Rev Assoc Med Bras (1992)* 2020; **66**: 87-94 [PMID: [32130387](#) DOI: [10.1590/1806-9282.66.1.87](#)]
- 29 **Gandhi D**, Sharma P, Parashar K, Kochar PS, Ahuja K, Sawhney H, Sharma S. Solid pseudopapillary Tumor of the Pancreas: Radiological and surgical review. *Clin Imaging* 2020; **67**: 101-107 [PMID: [32559679](#) DOI: [10.1016/j.clinimag.2020.06.008](#)]
- 30 **Nilsson LN**, Keane MG, Shamali A, Millastre Bocos J, Marijijnissen van Zanten M, Antila A, Verdejo Gil C, Del Chiaro M, Laukkanen J. Nature and management of pancreatic mucinous cystic neoplasm (MCN): A systematic review of the literature. *Pancreatol* 2016; **16**: 1028-1036 [PMID: [27681503](#) DOI: [10.1016/j.pan.2016.09.011](#)]
- 31 **Hasan A**, Visrodia K, Farrell JJ, Gonda TA. Overview and comparison of guidelines for management of pancreatic cystic neoplasms. *World J Gastroenterol* 2019; **25**: 4405-4413 [PMID: [31496620](#) DOI: [10.3748/wjg.v25.i31.4405](#)]
- 32 **Nitta T**, Mitsuhashi T, Hatanaka Y, Hirano S, Matsuno Y. Pancreatic ductal adenocarcinomas with multiple large cystic structures: a clinicopathologic and immunohistochemical study of seven cases. *Pancreatol* 2013; **13**: 401-408 [PMID: [23890139](#) DOI: [10.1016/j.pan.2013.05.004](#)]
- 33 **Bagci P**, Andea AA, Basturk O, Jang KT, Erbarut I, Adsay V. Large duct type invasive adenocarcinoma of the pancreas with microcystic and papillary patterns: a potential microscopic mimic of non-invasive ductal neoplasia. *Mod Pathol* 2012; **25**: 439-448 [PMID: [22056954](#) DOI: [10.1038/modpathol.2011.181](#)]
- 34 **Kelly PJ**, Shinagare S, Sainani N, Hong X, Ferrone C, Yilmaz O, Fernández-del Castillo C, Lauwers GY, Deshpande V. Cystic papillary pattern in pancreatic ductal adenocarcinoma: a heretofore undescribed morphologic pattern that mimics intraductal papillary mucinous carcinoma. *Am J Surg Pathol* 2012; **36**: 696-701 [PMID: [22367300](#) DOI: [10.1097/PAS.0b013e318249ce1c](#)]
- 35 **Kosmahl M**, Pauser U, Anlauf M, Klöppel G. Pancreatic ductal adenocarcinomas with cystic features: neither rare nor uniform. *Mod Pathol* 2005; **18**: 1157-1164 [PMID: [15920540](#) DOI: [10.1038/modpathol.3800446](#)]
- 36 **Adsay V**, Logani S, Sarkar F, Crissman J, Vaitkevicius V. Foamy gland pattern of pancreatic ductal adenocarcinoma: a deceptively benign-appearing variant. *Am J Surg Pathol* 2000; **24**: 493-504 [PMID: [10757396](#) DOI: [10.1097/00000478-200004000-00003](#)]
- 37 **Greenlee RT**, Murray T, Bolden S, Wingo PA. Cancer statistics, 2000. *CA Cancer J Clin* 2000; **50**: 7-33 [PMID: [10735013](#) DOI: [10.3322/canjclin.50.1.7](#)]
- 38 **Youn SY**, Rha SE, Jung ES, Lee IS. Pancreas ductal adenocarcinoma with cystic features on cross-sectional imaging: radiologic-pathologic correlation. *Diagn Interv Radiol* 2018; **24**: 5-11 [PMID: [29317372](#) DOI: [10.5152/dir.2018.17250](#)]
- 39 **Kovač JD**, Janković A, Mašulović D. The “bunch of grapes” pattern of branch-duct IPMN. *Abdom Radiol (NY)* 2019; **45**: 249-250 [PMID: [31605187](#) DOI: [10.1007/s00261-019-02266-y](#)]
- 40 **Chakravarty S**, Chakravarty R, Sarkar N, Chitropala R. Radiological diagnosis of rare pancreatic serous cystadenoma. *J Family Med Prim Care* 2019; **8**: 2744-2746 [PMID: [31548970](#) DOI: [10.4103/jfmpe.jfmpe_454_19](#)]
- 41 **Tanaka M**, Fernández-del Castillo C, Adsay V, Chari S, Falconi M, Jang JY, Kimura W, Levy P, Pitman MB, Schmidt CM, Shimizu M, Wolfgang CL, Yamaguchi K, Yamao K; International Association of Pancreatology. International consensus guidelines 2012 for the management of IPMN and MCN of the pancreas. *Pancreatol* 2012; **12**: 183-197 [PMID: [22687371](#) DOI: [10.1016/j.pan.2012.04.004](#)]
- 42 **Anonsen K**, Sahakyan MA, Kleive D, Waage A, Verbeke C, Hauge T, Buanes T, Edwin B, Labori KJ. Trends in management and outcome of cystic pancreatic lesions - analysis of 322 cases undergoing surgical resection. *Scand J Gastroenterol* 2019; **54**: 1051-1057 [PMID: [31322457](#) DOI: [10.1080/00365521.2019.1642379](#)]
- 43 **Yamao K**, Yanagisawa A, Takahashi K, Kimura W, Doi R, Fukushima N, Ohike N, Shimizu M,

- Hatori T, Nobukawa B, Hifumi M, Kobayashi Y, Tobita K, Tanno S, Sugiyama M, Miyasaka Y, Nakagohri T, Yamaguchi T, Hanada K, Abe H, Tada M, Fujita N, Tanaka M. Clinicopathological features and prognosis of mucinous cystic neoplasm with ovarian-type stroma: a multi-institutional study of the Japan pancreas society. *Pancreas* 2011; **40**: 67-71 [PMID: [20924309](#) DOI: [10.1097/MPA.0b013e3181f749d3](#)]
- 44 **Rana SS**, Bhasin DK, Sharma R, Gupta R. Factors determining recurrence of fluid collections following migration of intended long term transmural stents in patients with walled off pancreatic necrosis and disconnected pancreatic duct syndrome. *Endosc Ultrasound* 2015; **4**: 208-212 [PMID: [26374578](#) DOI: [10.4103/2303-9027.162999](#)]
 - 45 **Cohen-Scali F**, Vilgrain V, Brancatelli G, Hammel P, Vullierme MP, Sauvanet A, Menu Y. Discrimination of unilocular macrocystic serous cystadenoma from pancreatic pseudocyst and mucinous cystadenoma with CT: initial observations. *Radiology* 2003; **228**: 727-733 [PMID: [12954892](#) DOI: [10.1148/radiol.2283020973](#)]
 - 46 **Kim YS**, Cho JH. Rare nonneoplastic cysts of pancreas. *Clin Endosc* 2015; **48**: 31-38 [PMID: [25674524](#) DOI: [10.5946/ce.2015.48.1.31](#)]
 - 47 **Assifi MM**, Nguyen PD, Agrawal N, Dedania N, Kennedy EP, Sauter PK, Prestipino A, Winter JM, Yeo CJ, Lavu H. Non-neoplastic epithelial cysts of the pancreas: a rare, benign entity. *J Gastrointest Surg* 2014; **18**: 523-531 [PMID: [24449000](#) DOI: [10.1007/s11605-014-2459-7](#)]
 - 48 **Young MR**, Wagner PD, Ghosh S, Rinaudo JA, Baker SG, Zaret KS, Goggins M, Srivastava S. Validation of Biomarkers for Early Detection of Pancreatic Cancer: Summary of The Alliance of Pancreatic Cancer Consortia for Biomarkers for Early Detection Workshop. *Pancreas* 2018; **47**: 135-141 [PMID: [29346214](#) DOI: [10.1097/MPA.0000000000000973](#)]
 - 49 **Yoon SE**, Byun JH, Kim KA, Kim HJ, Lee SS, Jang SJ, Jang YJ, Lee MG. Pancreatic ductal adenocarcinoma with intratumoral cystic lesions on MRI: correlation with histopathological findings. *Br J Radiol* 2010; **83**: 318-326 [PMID: [19620175](#) DOI: [10.1259/bjr/69770140](#)]
 - 50 **Salvia R**, Crippa S, Partelli S, Armatura G, Malleo G, Paini M, Pea A, Bassi C. Differences between main-duct and branch-duct intraductal papillary mucinous neoplasms of the pancreas. *World J Gastrointest Surg* 2010; **2**: 342-346 [PMID: [21160841](#) DOI: [10.4240/wjgs.v2.i10.342](#)]
 - 51 **Laurent L**, Vullierme MP, Rebours V, Maire F, Hentic O, Francoz C, Durand F, Ruszniewski P, Levy P. Estimation of the prevalence of intraductal papillary mucinous neoplasm of the pancreas in the French population through patients waiting for liver transplantation. *United European Gastroenterol J* 2017; **5**: 499-503 [PMID: [28588880](#) DOI: [10.1177/2050640616664842](#)]
 - 52 **Wang Y**, Miller FH, Chen ZE, Merrick L, Morteale KJ, Hoff FL, Hammond NA, Yaghami V, Nikolaidis P. Diffusion-weighted MR imaging of solid and cystic lesions of the pancreas. *Radiographics* 2011; **31**: E47-E64 [PMID: [21721197](#) DOI: [10.1148/rg.313105174](#)]
 - 53 **Morelli L**, Guadagni S, Borrelli V, Pisano R, Di Franco G, Palmeri M, Furbetta N, Gambaccini D, Marchi S, Boraschi P, Bastiani L, Campatelli A, Mosca F, Di Candio G. Role of abdominal ultrasound for the surveillance follow-up of pancreatic cystic neoplasms: a cost-effective safe alternative to the routine use of magnetic resonance imaging. *World J Gastroenterol* 2019; **25**: 2217-2228 [PMID: [31143072](#) DOI: [10.3748/wjg.v25.i18.2217](#)]
 - 54 **Kitano M**, Yoshida T, Itonaga M, Tamura T, Hatamaru K, Yamashita Y. Impact of endoscopic ultrasonography on diagnosis of pancreatic cancer. *J Gastroenterol* 2019; **54**: 19-32 [PMID: [30406288](#) DOI: [10.1007/s00535-018-1519-2](#)]
 - 55 **Kadiyala V**, Lee LS. Endosonography in the diagnosis and management of pancreatic cysts. *World J Gastrointest Endosc* 2015; **7**: 213-223 [PMID: [25789091](#) DOI: [10.4253/wjge.v7.i3.213](#)]
 - 56 **Will U**, Reichel A, Fuedner F, Meyer F. Endoscopic ultrasonography-guided drainage for patients with symptomatic obstruction and enlargement of the pancreatic duct. *World J Gastroenterol* 2015; **21**: 13140-13151 [PMID: [26674313](#) DOI: [10.3748/wjg.v21.i46.13140](#)]
 - 57 **Tsujino T**, Chang KJ. Cyst-Within-Cyst Found on EUS-Guided Cystoscopy of a Pancreatic Mucinous Cystic Neoplasia. *Am J Gastroenterol* 2016; **111**: 1089 [PMID: [27481409](#) DOI: [10.1038/ajg.2016.149](#)]
 - 58 **Sbeit W**, Kadah A, Farraj M, Shiller M. Pancreatic Cyst Mucin Ball Aspiration as a Diagnostic Maneuver. *Isr Med Assoc J* 2018; **20**: 394 [PMID: [29911766](#)]
 - 59 **Tanaka M**, Fernández-Del Castillo C, Kamisawa T, Jang JY, Levy P, Ohtsuka T, Salvia R, Shimizu Y, Tada M, Wolfgang CL. Revisions of international consensus Fukuoka guidelines for the management of IPMN of the pancreas. *Pancreatol* 2017; **17**: 738-753 [PMID: [28735806](#) DOI: [10.1016/j.pan.2017.07.007](#)]
 - 60 **Gao RY**, Wu BH, Shen XY, Peng TL, Li DF, Wei C, Yu ZC, Luo MH, Xiong F, Wang LS, Yao J. Overlooked risk for needle tract seeding following endoscopic ultrasound-guided minimally invasive tissue acquisition. *World J Gastroenterol* 2020; **26**: 6182-6194 [PMID: [33177792](#) DOI: [10.3748/wjg.v26.i40.6182](#)]
 - 61 **Singhi AD**, Chu LC, Tatsas AD, Shi C, Ellison TA, Fishman EK, Kawamoto S, Schulick RD, Wolfgang CL, Hruban RH, Edil BH. Cystic pancreatic neuroendocrine tumors: a clinicopathologic study. *Am J Surg Pathol* 2012; **36**: 1666-1673 [PMID: [23073325](#) DOI: [10.1097/PAS.0b013e31826a0048](#)]
 - 62 **Halfdanarson TR**, Rubin J, Farnell MB, Grant CS, Petersen GM. Pancreatic endocrine neoplasms: epidemiology and prognosis of pancreatic endocrine tumors. *Endocr Relat Cancer* 2008; **15**: 409-427 [PMID: [18508996](#) DOI: [10.1677/ERC-07-0221](#)]
 - 63 **Furukawa T**, Klöppel G, Volkan Adsay N, Albores-Saavedra J, Fukushima N, Horii A, Hruban RH,

- Kato Y, Klimstra DS, Longnecker DS, Lüttges J, Offerhaus GJ, Shimizu M, Sunamura M, Suriawinata A, Takaori K, Yonezawa S. Classification of types of intraductal papillary-mucinous neoplasm of the pancreas: a consensus study. *Virchows Arch* 2005; **447**: 794-799 [PMID: [16088402](#) DOI: [10.1007/s00428-005-0039-7](#)]
- 64 **Furukawa T**, Hatori T, Fujita I, Yamamoto M, Kobayashi M, Ohike N, Morohoshi T, Egawa S, Unno M, Takao S, Osako M, Yonezawa S, Mino-Kenudson M, Lauwers GY, Yamaguchi H, Ban S, Shimizu M. Prognostic relevance of morphological types of intraductal papillary mucinous neoplasms of the pancreas. *Gut* 2011; **60**: 509-516 [PMID: [21193453](#) DOI: [10.1136/gut.2010.210567](#)]
- 65 **Adsay NV**, Merati K, Nassar H, Shia J, Sarkar F, Pierson CR, Cheng JD, Visscher DW, Hruban RH, Klimstra DS. Pathogenesis of colloid (pure mucinous) carcinoma of exocrine organs: Coupling of gel-forming mucin (MUC2) production with altered cell polarity and abnormal cell-stroma interaction may be the key factor in the morphogenesis and indolent behavior of colloid carcinoma in the breast and pancreas. *Am J Surg Pathol* 2003; **27**: 571-578 [PMID: [12717243](#) DOI: [10.1097/00000478-200305000-00002](#)]
- 66 **Adsay NV**, Pierson C, Sarkar F, Abrams J, Weaver D, Conlon KC, Brennan MF, Klimstra DS. Colloid (mucinous noncystic) carcinoma of the pancreas. *Am J Surg Pathol* 2001; **25**: 26-42 [PMID: [11145249](#) DOI: [10.1097/00000478-200101000-00003](#)]
- 67 **Rana SS**, Sharma V, Sharma R, Gupta R, Bhasin DK. Endoscopic ultrasound guided transmural drainage of walled off pancreatic necrosis using a "step - up" approach: A single centre experience. *Pancreatol* 2017; **17**: 203-208 [PMID: [28202234](#) DOI: [10.1016/j.pan.2017.02.007](#)]
- 68 **Lau SK**, Weiss LM, Chu PG. Differential expression of MUC1, MUC2, and MUC5AC in carcinomas of various sites: an immunohistochemical study. *Am J Clin Pathol* 2004; **122**: 61-69 [PMID: [15272531](#) DOI: [10.1309/9R66-73QE-C06D-86Y4](#)]
- 69 **Haeblerle L**, Esposito I. Pathology of pancreatic cancer. *Transl Gastroenterol Hepatol* 2019; **4**: 50 [PMID: [31304427](#) DOI: [10.21037/tgh.2019.06.02](#)]
- 70 **Morris JP 4th**, Cano DA, Sekine S, Wang SC, Hebrok M. Beta-catenin blocks Kras-dependent reprogramming of acini into pancreatic cancer precursor lesions in mice. *J Clin Invest* 2010; **120**: 508-520 [PMID: [20071774](#) DOI: [10.1172/JCI40045](#)]
- 71 **Kopp JL**, von Figura G, Mayes E, Liu FF, Dubois CL, Morris JP 4th, Pan FC, Akiyama H, Wright CV, Jensen K, Hebrok M, Sander M. Identification of Sox9-dependent acinar-to-ductal reprogramming as the principal mechanism for initiation of pancreatic ductal adenocarcinoma. *Cancer Cell* 2012; **22**: 737-750 [PMID: [23201164](#) DOI: [10.1016/j.ccr.2012.10.025](#)]
- 72 **Kanda M**, Matthaei H, Wu J, Hong SM, Yu J, Borges M, Hruban RH, Maitra A, Kinzler K, Vogelstein B, Goggins M. Presence of somatic mutations in most early-stage pancreatic intraepithelial neoplasia. *Gastroenterology* 2012; **142**: 730-733. e9 [PMID: [22226782](#) DOI: [10.1053/j.gastro.2011.12.042](#)]
- 73 **Kuboki Y**, Shimizu K, Hatori T, Yamamoto M, Shibata N, Shiratori K, Furukawa T. Molecular biomarkers for progression of intraductal papillary mucinous neoplasm of the pancreas. *Pancreas* 2015; **44**: 227-235 [PMID: [25423558](#) DOI: [10.1097/MPA.0000000000000253](#)]
- 74 **Tsuda M**, Fukuda A, Roy N, Hiramatsu Y, Leonhardt L, Kakiuchi N, Hoyer K, Ogawa S, Goto N, Ikuta K, Kimura Y, Matsumoto Y, Takada Y, Yoshioka T, Maruno T, Yamaga Y, Kim GE, Akiyama H, Wright CV, Saur D, Takaori K, Uemoto S, Hebrok M, Chiba T, Seno H. The BRG1/SOX9 axis is critical for acinar cell-derived pancreatic tumorigenesis. *J Clin Invest* 2018; **128**: 3475-3489 [PMID: [30010625](#) DOI: [10.1172/JCI94287](#)]
- 75 **Redston MS**, Caldas C, Seymour AB, Hruban RH, da Costa L, Yeo CJ, Kern SE. p53 mutations in pancreatic carcinoma and evidence of common involvement of homocopolymer tracts in DNA microdeletions. *Cancer Res* 1994; **54**: 3025-3033 [PMID: [8187092](#)]
- 76 **Furukawa T**, Fujisaki R, Yoshida Y, Kanai N, Sunamura M, Abe T, Takeda K, Matsuno S, Horii A. Distinct progression pathways involving the dysfunction of DUSP6/MKP-3 in pancreatic intraepithelial neoplasia and intraductal papillary-mucinous neoplasms of the pancreas. *Mod Pathol* 2005; **18**: 1034-1042 [PMID: [15832194](#) DOI: [10.1038/modpathol.3800383](#)]
- 77 **Walerych D**, Lisek K, Sommaggio R, Piazza S, Ciani Y, Dalla E, Rajkowska K, Gaweda-Walerych K, Ingallina E, Tonelli C, Morelli MJ, Amato A, Eterno V, Zambelli A, Rosato A, Amati B, Wiśniewski JR, Del Sal G. Proteasome machinery is instrumental in a common gain-of-function program of the p53 missense mutants in cancer. *Nat Cell Biol* 2016; **18**: 897-909 [PMID: [27347849](#) DOI: [10.1038/ncb3380](#)]
- 78 **Escobar-Hoyos LF**, Penson A, Kannan R, Cho H, Pan CH, Singh RK, Apken LH, Hobbs GA, Luo R, Lecomte N, Babu S, Pan FC, Alonso-Curbelo D, Morris JP 4th, Askan G, Grbovic-Huezo O, Ogrodowski P, Bermeo J, Saglimbeni J, Cruz CD, Ho YJ, Lawrence SA, Melchor JP, Goda GA, Bai K, Pastore A, Hogg SJ, Raghavan S, Bailey P, Chang DK, Biankin A, Shroyer KR, Wolpin BM, Aguirre AJ, Ventura A, Taylor B, Der CJ, Dominguez D, Kümmel D, Oeckinghaus A, Lowe SW, Bradley RK, Abdel-Wahab O, Leach SD. Altered RNA Splicing by Mutant p53 Activates Oncogenic RAS Signaling in Pancreatic Cancer. *Cancer Cell* 2020; **38**: 198-211. e8 [PMID: [32559497](#) DOI: [10.1016/j.ccell.2020.05.010](#)]
- 79 **Bardeesy N**, Cheng KH, Berger JH, Chu GC, Pahler J, Olson P, Hezel AF, Horner J, Lauwers GY, Hanahan D, DePinho RA. Smad4 is dispensable for normal pancreas development yet critical in progression and tumor biology of pancreas cancer. *Genes Dev* 2006; **20**: 3130-3146 [PMID: [17114584](#) DOI: [10.1101/gad.1478706](#)]
- 80 **Wu J**, Matthaei H, Maitra A, Dal Molin M, Wood LD, Eshleman JR, Goggins M, Canto MI, Schulick

- RD, Edil BH, Wolfgang CL, Klein AP, Diaz LA Jr, Allen PJ, Schmidt CM, Kinzler KW, Papadopoulos N, Hruban RH, Vogelstein B. Recurrent GNAS mutations define an unexpected pathway for pancreatic cyst development. *Sci Transl Med* 2011; **3**: 92ra66 [PMID: [21775669](#) DOI: [10.1126/scitranslmed.3002543](#)]
- 81 **Furukawa T**, Kuboki Y, Tanji E, Yoshida S, Hatori T, Yamamoto M, Shibata N, Shimizu K, Kamatani N, Shiratori K. Whole-exome sequencing uncovers frequent GNAS mutations in intraductal papillary mucinous neoplasms of the pancreas. *Sci Rep* 2011; **1**: 161 [PMID: [22355676](#) DOI: [10.1038/srep00161](#)]
- 82 **Patra KC**, Kato Y, Mizukami Y, Widholz S, Boukhali M, Revenco I, Grossman EA, Ji F, Sadreyev RI, Liss AS, Screaton RA, Sakamoto K, Ryan DP, Mino-Kenudson M, Castillo CF, Nomura DK, Haas W, Bardeesy N. Mutant GNAS drives pancreatic tumorigenesis by inducing PKA-mediated SIK suppression and reprogramming lipid metabolism. *Nat Cell Biol* 2018; **20**: 811-822 [PMID: [29941929](#) DOI: [10.1038/s41556-018-0122-3](#)]
- 83 **Amato E**, Molin MD, Mafficini A, Yu J, Malleo G, Rusev B, Fassan M, Antonello D, Sadakari Y, Castelli P, Zamboni G, Maitra A, Salvia R, Hruban RH, Bassi C, Capelli P, Lawlor RT, Goggins M, Scarpa A. Targeted next-generation sequencing of cancer genes dissects the molecular profiles of intraductal papillary neoplasms of the pancreas. *J Pathol* 2014; **233**: 217-227 [PMID: [24604757](#) DOI: [10.1002/path.4344](#)]
- 84 **Lee JH**, Kim Y, Choi JW, Kim YS. KRAS, GNAS, and RNF43 mutations in intraductal papillary mucinous neoplasm of the pancreas: a meta-analysis. *Springerplus* 2016; **5**: 1172 [PMID: [27512631](#) DOI: [10.1186/s40064-016-2847-4](#)]
- 85 **Wu J**, Jiao Y, Dal Molin M, Maitra A, de Wilde RF, Wood LD, Eshleman JR, Goggins MG, Wolfgang CL, Canto MI, Schulick RD, Edil BH, Choti MA, Adsay V, Klimstra DS, Offerhaus GJ, Klein AP, Kopelovich L, Carter H, Karchin R, Allen PJ, Schmidt CM, Naito Y, Diaz LA Jr, Kinzler KW, Papadopoulos N, Hruban RH, Vogelstein B. Whole-exome sequencing of neoplastic cysts of the pancreas reveals recurrent mutations in components of ubiquitin-dependent pathways. *Proc Natl Acad Sci USA* 2011; **108**: 21188-21193 [PMID: [22158988](#) DOI: [10.1073/pnas.1118046108](#)]
- 86 **Scarpa A**, Chang DK, Nones K, Corbo V, Patch AM, Bailey P, Lawlor RT, Johns AL, Miller DK, Mafficini A, Rusev B, Scardoni M, Antonello D, Barbi S, Sikora KO, Cingarlini S, Vicentini C, McKay S, Quinn MCJ, Bruxner TJC, Christ AN, Harliwong I, Idrisoglu S, McLean S, Nourse C, Nourbakhsh E, Wilson PJ, Anderson MJ, Fink JL, Newell F, Waddell N, Holmes O, Kazakoff SH, Leonard C, Wood S, Xu Q, Hiriyur Nagaraj S, Amato E, Dalai I, Bersani S, Cataldo I, Dei Tos AP, Capelli P, Vittoria Davi M, Landoni L, Malpaga A, Miotto M, Whitehall VLJ, Leggett BA, Harris JL, Harris J, Jones MD, Humphris J, Chantrill LA, Chin V, Nagrial AM, Pajic M, Scarlett CJ, Pinho A, Rooman I, Toon C, Wu J, Pinese M, Cowley M, Barbour A, Mawson A, Humphrey ES, Colvin EK, Chou A, Lovell JA, Jamieson NB, Duthie F, Gingras MC, Fisher WE, Dagg RA, Lau LMS, Lee M, Pickett HA, Reddel RR, Samra JS, Kench JG, Merrett ND, Epari K, Nguyen NQ, Zeps N, Falconi M, Simbolo M, Butturini G, Van Buren G, Partelli S, Fassan M; Australian Pancreatic Cancer Genome Initiative, Khanna KK, Gill AJ, Wheeler DA, Gibbs RA, Musgrove EA, Bassi C, Tortora G, Pederzoli P, Pearson JV, Biankin AV, Grimmond SM. Corrigendum: Whole-genome landscape of pancreatic neuroendocrine tumours. *Nature* 2017; **550**: 548 [PMID: [28953865](#) DOI: [10.1038/nature24026](#)]
- 87 **Pelosi E**, Castelli G, Testa U. Pancreatic Cancer: Molecular Characterization, Clonal Evolution and Cancer Stem Cells. *Biomedicines* 2017; **5** [PMID: [29156578](#) DOI: [10.3390/biomedicines5040065](#)]
- 88 **Lytle NK**, Ferguson LP, Rajbhandari N, Gilroy K, Fox RG, Deshpande A, Schürch CM, Hamilton M, Robertson N, Lin W, Noel P, Wartenberg M, Zlobec I, Eichmann M, Galván JA, Karamitopoulou E, Gilderman T, Esparza LA, Shima Y, Spahn P, French R, Lewis NE, Fisch KM, Sasik R, Rosenthal SB, Kritzik M, Von Hoff D, Han H, Ideker T, Deshpande AJ, Lowy AM, Adams PD, Reya T. A Multiscale Map of the Stem Cell State in Pancreatic Adenocarcinoma. *Cell* 2019; **177**: 572-586. e22 [PMID: [30955884](#) DOI: [10.1016/j.cell.2019.03.010](#)]
- 89 **Jones S**, Zhang X, Parsons DW, Lin JC, Leary RJ, Angenendt P, Mankoo P, Carter H, Kamiyama H, Jimeno A, Hong SM, Fu B, Lin MT, Calhoun ES, Kamiyama M, Walter K, Nikolskaya T, Nikolsky Y, Hartigan J, Smith DR, Hidalgo M, Leach SD, Klein AP, Jaffee EM, Goggins M, Maitra A, Iacobuzio-Donahue C, Eshleman JR, Kern SE, Hruban RH, Karchin R, Papadopoulos N, Parmigiani G, Vogelstein B, Velculescu VE, Kinzler KW. Core signaling pathways in human pancreatic cancers revealed by global genomic analyses. *Science* 2008; **321**: 1801-1806 [PMID: [18772397](#) DOI: [10.1126/science.1164368](#)]
- 90 **Okabayashi T**, Shima Y, Kosaki T, Sumiyoshi T, Kozuki A, Iiyama T, Takezaki Y, Kobayashi M, Nishimori I, Ogawa Y, Hanazaki K. Invasive carcinoma derived from branch duct-type IPMN may be a more aggressive neoplasm than that derived from main duct-type IPMN. *Oncol Lett* 2013; **5**: 1819-1825 [PMID: [23833648](#) DOI: [10.3892/ol.2013.1268](#)]
- 91 **Oettle H**, Neuhaus P, Hochhaus A, Hartmann JT, Gellert K, Ridwelski K, Niedergethmann M, Zülke C, Fahlke J, Arning MB, Sinn M, Hinke A, Riess H. Adjuvant chemotherapy with gemcitabine and long-term outcomes among patients with resected pancreatic cancer: the CONKO-001 randomized trial. *JAMA* 2013; **310**: 1473-1481 [PMID: [24104372](#) DOI: [10.1001/jama.2013.279201](#)]
- 92 **Uesaka K**, Boku N, Fukutomi A, Okamura Y, Konishi M, Matsumoto I, Kaneoka Y, Shimizu Y, Nakamori S, Sakamoto H, Morinaga S, Kainuma O, Imai K, Sata N, Hishinuma S, Ojima H, Yamaguchi R, Hirano S, Sudo T, Ohashi Y; JASPAC 01 Study Group. Adjuvant chemotherapy of S-1 versus gemcitabine for resected pancreatic cancer: a phase 3, open-label, randomised, non-inferiority trial (JASPAC 01). *Lancet* 2016; **388**: 248-257 [PMID: [27265347](#) DOI: [10.1016/S0140-6736\(16\)00444-1](#)]

- 10.1016/S0140-6736(16)30583-9]
- 93 **Eguchi H**, Takeda Y, Takahashi H, Nakahira S, Kashiwazaki M, Shimizu J, Sakai D, Isohashi F, Nagano H, Mori M, Doki Y. A Prospective, Open-Label, Multicenter Phase 2 Trial of Neoadjuvant Therapy Using Full-Dose Gemcitabine and S-1 Concurrent with Radiation for Resectable Pancreatic Ductal Adenocarcinoma. *Ann Surg Oncol* 2019; **26**: 4498-4505 [PMID: 31440928 DOI: 10.1245/s10434-019-07735-8]



Published by **Baishideng Publishing Group Inc**
7041 Koll Center Parkway, Suite 160, Pleasanton, CA 94566, USA

Telephone: +1-925-3991568

E-mail: bpgoffice@wjgnet.com

Help Desk: <https://www.f6publishing.com/helpdesk>

<https://www.wjgnet.com>

