

# World Journal of *Gastroenterology*

*World J Gastroenterol* 2022 March 21; 28(11): 1088-1186



### REVIEW

- 1088** B cells in pancreatic cancer stroma  
*Delvecchio FR, Goulart MR, Fincham REA, Bombadieri M, Kocher HM*
- 1102** Impaired coagulation, liver dysfunction and COVID-19: Discovering an intriguing relationship  
*D'Ardes D, Boccatonda A, Cocco G, Fabiani S, Rossi I, Bucci M, Guagnano MT, Schiavone C, Cipollone F*

### MINIREVIEWS

- 1113** Advanced imaging and artificial intelligence for Barrett's esophagus: What we should and soon will do  
*Spadaccini M, Vespa E, Chandrasekar VT, Desai M, Patel HK, Maselli R, Fugazza A, Carrara S, Anderloni A, Franchellucci G, De Marco A, Hassan C, Bhandari P, Sharma P, Repici A*
- 1123** Rectal neuroendocrine tumors: Current advances in management, treatment, and surveillance  
*Gallo C, Rossi RE, Cavalcoti F, Barbaro F, Boškosi I, Invernizzi P, Massironi S*

### ORIGINAL ARTICLE

#### Basic Study

- 1139** Quercetin exerts anti-inflammatory effects *via* inhibiting tumor necrosis factor- $\alpha$ -induced matrix metalloproteinase-9 expression in normal human gastric epithelial cells  
*Hsieh HL, Yu MC, Cheng LC, Chu MY, Huang TH, Yeh TS, Tsai MM*

#### Retrospective Study

- 1159** Assessment of pathogens and risk factors associated with bloodstream infection in the year after pediatric liver transplantation  
*Kim YE, Choi HJ, Lee HJ, Oh HJ, Ahn MK, Oh SH, Namgoong JM, Kim DY, Jhang WK, Park SJ, Jung DH, Moon DB, Song GW, Park GC, Ha TY, Ahn CS, Kim KH, Hwang S, Lee SG, Kim KM*

#### Observational Study

- 1172** Real-world effectiveness of direct-acting antivirals in people living with human immunodeficiency virus and hepatitis C virus genotype 6 infections  
*Sun HY, Cheng CY, Lin CY, Yang CJ, Lee NY, Liou BH, Tang HJ, Liu YM, Lee CY, Chen TC, Huang YC, Lee YT, Tsai MJ, Lu PL, Tsai HC, Wang NC, Hung TC, Cheng SH, Hung CC*

### LETTER TO THE EDITOR

- 1184** New treatment for gastroesophageal reflux disease: Traditional medicine, Xiaochaihu decoction  
*Xu LY, Yu BY, Cen LS*

**ABOUT COVER**

Editorial Board Member of World Journal of Gastroenterology, Nikolaos Papadopoulos, MD, PhD, Chief Physician, Consultant, 1st Department of Internal Medicine, 417 Army Share Fund Hospital, Athens 11521, Greece. nipapmed@gmail.com

**AIMS AND SCOPE**

The primary aim of *World Journal of Gastroenterology* (WJG, *World J Gastroenterol*) is to provide scholars and readers from various fields of gastroenterology and hepatology with a platform to publish high-quality basic and clinical research articles and communicate their research findings online. WJG mainly publishes articles reporting research results and findings obtained in the field of gastroenterology and hepatology and covering a wide range of topics including gastroenterology, hepatology, gastrointestinal endoscopy, gastrointestinal surgery, gastrointestinal oncology, and pediatric gastroenterology.

**INDEXING/ABSTRACTING**

The WJG is now indexed in Current Contents®/Clinical Medicine, Science Citation Index Expanded (also known as SciSearch®), Journal Citation Reports®, Index Medicus, MEDLINE, PubMed, PubMed Central, and Scopus. The 2021 edition of Journal Citation Report® cites the 2020 impact factor (IF) for WJG as 5.742; Journal Citation Indicator: 0.79; IF without journal self cites: 5.590; 5-year IF: 5.044; Ranking: 28 among 92 journals in gastroenterology and hepatology; and Quartile category: Q2. The WJG's CiteScore for 2020 is 6.9 and Scopus CiteScore rank 2020: Gastroenterology is 19/136.

**RESPONSIBLE EDITORS FOR THIS ISSUE**

Production Editor: *Ying-Yi Yuan*, Production Department Director: *Xiang Li*, Editorial Office Director: *Ze-Mao Gong*.

**NAME OF JOURNAL**

*World Journal of Gastroenterology*

**ISSN**

ISSN 1007-9327 (print) ISSN 2219-2840 (online)

**LAUNCH DATE**

October 1, 1995

**FREQUENCY**

Weekly

**EDITORS-IN-CHIEF**

Andrzej S Tarnawski

**EDITORIAL BOARD MEMBERS**

<http://www.wjgnet.com/1007-9327/editorialboard.htm>

**PUBLICATION DATE**

March 21, 2022

**COPYRIGHT**

© 2022 Baishideng Publishing Group Inc

**INSTRUCTIONS TO AUTHORS**

<https://www.wjgnet.com/bpg/gerinfo/204>

**GUIDELINES FOR ETHICS DOCUMENTS**

<https://www.wjgnet.com/bpg/GerInfo/287>

**GUIDELINES FOR NON-NATIVE SPEAKERS OF ENGLISH**

<https://www.wjgnet.com/bpg/gerinfo/240>

**PUBLICATION ETHICS**

<https://www.wjgnet.com/bpg/GerInfo/288>

**PUBLICATION MISCONDUCT**

<https://www.wjgnet.com/bpg/gerinfo/208>

**ARTICLE PROCESSING CHARGE**

<https://www.wjgnet.com/bpg/gerinfo/242>

**STEPS FOR SUBMITTING MANUSCRIPTS**

<https://www.wjgnet.com/bpg/GerInfo/239>

**ONLINE SUBMISSION**

<https://www.f6publishing.com>



## Rectal neuroendocrine tumors: Current advances in management, treatment, and surveillance

Camilla Gallo, Roberta Elisa Rossi, Federica Cavalcoli, Federico Barbaro, Ivo Boškoski, Pietro Invernizzi, Sara Massironi

**Specialty type:** Gastroenterology and hepatology

**Provenance and peer review:**

Invited article; Externally peer reviewed.

**Peer-review model:** Single blind

**Peer-review report's scientific quality classification**

Grade A (Excellent): 0

Grade B (Very good): B

Grade C (Good): C

Grade D (Fair): D

Grade E (Poor): E

**P-Reviewer:** Baeg MK, Oda M, Wang G, Yamamura T

**Received:** October 15, 2021

**Peer-review started:** October 15, 2021

**First decision:** December 12, 2021

**Revised:** December 24, 2021

**Accepted:** February 20, 2022

**Article in press:** February 20, 2022

**Published online:** March 21, 2022



**Camilla Gallo, Pietro Invernizzi, Sara Massironi**, Division of Gastroenterology and Center for Autoimmune Liver Diseases, Department of Medicine and Surgery, University of Milano-Bicocca, European Reference Network on Hepatological Diseases, San Gerardo Hospital, Monza 20900, Italy

**Roberta Elisa Rossi**, Division of HPB Surgery, Hepatology and Liver Transplantation, Department of Pathophysiology and Transplantation, University of Milan, ENETS Center of Excellence, Fondazione IRCCS Istituto Nazionale Tumori (INT, National Cancer Institute), Milan 20133, Italy

**Federica Cavalcoli**, Diagnostic and Therapeutic Endoscopy Unit, Fondazione IRCCS Istituto Nazionale Tumori, Milan 20133, Italy

**Federico Barbaro, Ivo Boškoski**, Digestive Endoscopy Unit, Università Cattolica del Sacro Cuore di Roma, Center for Endoscopic Research Therapeutics and Training, Fondazione Policlinico Universitario Agostino Gemelli IRCCS, Rome 00168, Italy

**Corresponding author:** Sara Massironi, MD, PhD, Doctor, Division of Gastroenterology and Center for Autoimmune Liver Diseases, Department of Medicine and Surgery, University of Milano-Bicocca, European Reference Network on Hepatological Diseases, San Gerardo Hospital, Via Pergolesi, 33, Monza 20900, Italy. [s.massironi@asst-monza.it](mailto:s.massironi@asst-monza.it)

### Abstract

Rectal neuroendocrine neoplasms (r-NENs) are considered among the most frequent digestive NENs, together with small bowel NENs. Their incidence has increased over the past few years, and this is probably due to the widespread use of endoscopic screening for colorectal cancer and the advanced endoscopic procedures available nowadays. According to the current European Neuroendocrine Tumor Society (ENETS) guidelines, well-differentiated r-NENs smaller than 10 mm should be endoscopically removed in view of their low risk of local and distant invasion. R-NENs larger than 20 mm are candidates for surgical resection because of their high risk of distant spreading and the involvement of the muscularis propria. There is an area of uncertainty regarding tumors between 10 and 20 mm, in which the metastatic risk is intermediate and the endoscopic treatment can be challenging. Once removed, the indications for surveillance are scarce and poorly codified by international guidelines, therefore in this paper, a possible algorithm is proposed.

**Key Words:** Rectal neuroendocrine tumors; Endoscopy; Endoscopic submucosal dissection; Resectable advanced disease; Systemic therapy

©The Author(s) 2022. Published by Baishideng Publishing Group Inc. All rights reserved.

**Core Tip:** Rectal neuroendocrine neoplasms (r-NENs) represent 1%-2% of all rectal tumors, but an increasing incidence rate has been recently reported. Up to 90% of r-NENs are < 10 mm in size, confined to the submucosa, and well-differentiated, so that the endoscopic resection represents their gold-standard therapy. Advanced metastatic NENs are usually poorly differentiated G3 carcinomas treated with chemotherapy, except for rare G1-G2 neoplasms, which can be targeted with less aggressive systemic options. Locally advanced r-NENs invading submucosal layers, with a  $\geq 10$  mm diameter, but still without distant metastases, represent the real therapeutic challenge among rectal tumors.

**Citation:** Gallo C, Rossi RE, Cavalcoli F, Barbaro F, Boškoski I, Invernizzi P, Massironi S. Rectal neuroendocrine tumors: Current advances in management, treatment, and surveillance. *World J Gastroenterol* 2022; 28(11): 1123-1138

**URL:** <https://www.wjgnet.com/1007-9327/full/v28/i11/1123.htm>

**DOI:** <https://dx.doi.org/10.3748/wjg.v28.i11.1123>

## INTRODUCTION

The gastrointestinal tract is the most frequent site for the onset of neuroendocrine neoplasms (NENs). NENs are a heterogeneous group of epithelial neoplasms, ranging from indolent well-differentiated neuroendocrine tumors (NETs) to very aggressive poorly differentiated neuroendocrine carcinomas (NECs). They can arise virtually from any organ or system in the human body. The rectum is the second localization by frequency after the small intestine[1] and rectal NENs (r-NENs) represent 12%-27% of all gastrointestinal NENs[2,3]. On the other hand, 1%-2% of all rectal tumors are neuroendocrine. An increasing incidence of r-NENs has been reported over the past few years, as illustrated in The Surveillance, Epidemiology, and End Results (SEER) database[1], and the same trend was confirmed in the German registry[4], as well as in the Asian registers[5], even if the highest incidence rate (IR) was reported in the United States, where IR was approximately 1.1 *per* 100000 population and increased tenfold between 1970 and 2000s[6]. In Europe, the IR was lower when compared to the SEER database, with the highest IR reported in Norway (0.25 *per* 100000 population) and the lowest in Austria[6]. This is probably due to an underreporting of the disease because of a lack of national registries.

The increasing incidence is related to the increased participation in screening colonoscopy programs. Even if there are limited data on the r-NENs diagnosed through colorectal cancer (CRC) screening programs, in a Polish screening CRC program cohort of 50148 participants, a prevalence of r-NENs of 0.05%-0.07% was reported[7]. Similarly in another English study, the diagnosis rates of NENs identified in the English bowel cancer screening program were 29 rectal and 18 colonic *per* 100000 colonoscopies, accounting for a prevalence of 0.047%[8].

Despite their increasing incidence, r-NENs are not yet sufficiently recognized by endoscopists in Western countries, since a recent study demonstrated that the neuroendocrine nature was suspected for only 18% of neuroendocrine lesions[9].

Suspicion of rNENs before their resection is clinically very important, given the fact that it significantly drives the decision on how to treat them. In fact, it has been reported that patients whose rNENs were diagnosed or suspected before resection showed a much higher complete resection rate than those whose tumors were resected as polyps and then diagnosed[10].

In the increasingly vast panorama of artificial intelligence, its application to gastrointestinal endoscopy may help in detecting and diagnosing r-NENs, thus leading to a further increase in incidence but in parallel to a more effective therapeutic approach.

## CLINICAL PRESENTATION AND ENDOSCOPIC APPEARANCE OF RECTAL NENS

Most of r-NENs are asymptomatic and they are diagnosed incidentally during endoscopic evaluation for CRC screening or unrelated gastrointestinal symptoms. Less frequently, r-NENs may present with anal discomfort, rectal bleeding, and change in bowel habits[11]. Most r-NENs, which arise from the neuroendocrine epithelial cells, appear as small, round polypoid lesions characterized by a smooth, normal-appearing, or yellow-discolored mucosa[12], with round shape pit pattern, type I on Kudo

classification, and invisible vessels, as described by Sano as type I[13] (Figure 1). R-NENs are usually located about 4 to 10 cm above the dentate line, on the frontal or lateral wall of the mid-rectum[14]. Up to 90% of r-NENs, at the time of the diagnosis, are well-differentiated epithelial lesions, less than 10 mm in size[15], usually developing towards the submucosal layer, but without invading the *muscularis propria* layer. However, atypical endoscopic findings (including semi-pedunculated appearance, hyperemia, central depression, erosion, and ulceration) have been reported for r-NEN exceeding 5 mm in diameter[14]. In addition, it has been recently reported that virtual chromoendoscopy with NBI, showing an absence of pit pattern with large amorphous areas (Kudo V), may be of value in detecting invasive r-NENs[13]. Unfortunately, the macroscopic appearance of r-NENs resembles that of hyperplastic or adenomatous polyps, making the differential diagnosis from other polypoid lesions challenging, and often the diagnosis is established at pathological examination after routine snare polypectomy or mucosectomy[16].

Moreover, the expanding use of artificial intelligence in endoscopy with computer-aided softwares could help the detection and characterization of polypoid lesions including r-NENs[17]. In the last years, EUS has extended the role of endoscopic evaluation of rectal NENs and it proved to help defining accurately the tumor size, the depth of invasion, and the presence of pararectal nodal metastases[18]. On EUS, rectal NETs usually appear as well-defined, hypoechoic lesions, located in the second and third wall layer[19] (Figure 2). In addition, EUS evidence of lobulated forms, irregular margins, and echogenic foci, may predict a higher grade of malignancy[20].

## RISK FACTORS FOR INCIDENCE/PREVALENCE, METASTASES, PROGRESSION, AND RECURRENCE

The risk factors associated with r-NENs are not fully clear given the overall low incidence rate of these tumors and the consequent scarcity of large epidemiological studies on rare cases. R-NENs include a heterogeneous group of neoplasms that are not completely indolent, as they used to be traditionally considered, but they are characterized by a risk of metastatic disease ranging from 3% to 60%. The identification of specific subgroups that are at increased risk of developing r-NENs is, therefore, of extreme relevance for early detection and removal of these neoplasms. According to a large Asian retrospective study[21], higher levels of cholesterol and ferritin, the presence of metabolic syndrome, and a family history of cancer were associated with an increased prevalence of r-NENs. Ko *et al* [22] observed that higher fasting plasma glucose and hypertriglyceridemia, younger age, and a previous history of malignancies were significantly associated with an increased risk of r-NENs. According to a retrospective cross-sectional study that compared the risk factors for 101 cases of r-NENs found during screening colonoscopies, male gender and low high-density lipoprotein cholesterol levels were significantly associated with these neoplasms[23].

As metabolic syndrome appears to be a recognized risk factor for the development of r-NENs, this might partially explain the increasing incidence of these tumors together with the improvement in screening colonoscopy. The actual mechanism underlying the association between metabolic risk factors and r-NENs is still unclear; however, it might be possible that insulin resistance represents a risk factor in r-NEN pathogenesis, also considering that insulin and insulin-like growth factors have been associated with cell proliferation, differentiation, and apoptosis[24].

Several predictors of metastases, progression, and/or recurrence of r-NENs have been proposed; however, the relevance of each of these factors has not been clearly established and clear-cut prognostic factors which might help in the management of these neoplasms have not been yet incorporated in current guidelines. Table 1 summarizes available prognostic factors.

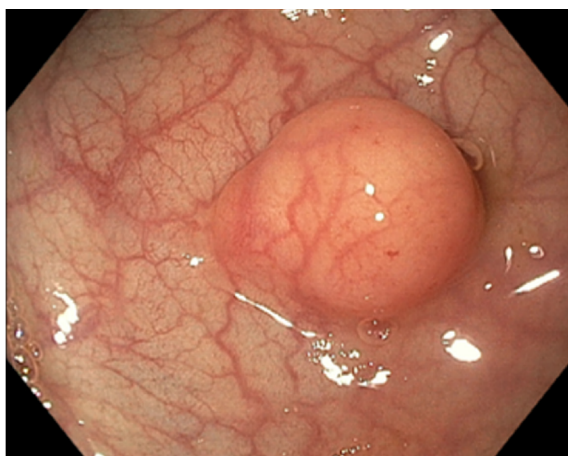
The most important factor predicting aggressive disease is the size of the primary tumor, with lesions > 20 mm being metastatic in 60%-80% of the cases[25]. On the other hand, patients with r-NENs measuring 10-19 mm develop synchronous or metachronous metastases in 4%-20% of the cases[25]. According to some large series, the optimal size cut-off to predict the risk of metastases is 15 mm[26-28]; in detail, Concors *et al* [28], in their study assessing a total of 4893 r-NENs patients identified in the National Cancer Database, observed that tumors larger than 15 mm are associated with a higher risk of distant metastasis, even if one should keep in mind that local and distant metastases might occur also in lesions < 15 mm, thus suggesting that the tumor's behavior is not influenced only by the size. As recently highlighted by Capurso *et al* [29], size alone has limited accuracy, as 26% of patients with stage IV and 16% with G3 neoplasm have a primary tumor ≤ 10 mm; instead, both staging and grading could accurately predict r-NEN prognosis. According to this study, the ENETS TNM staging accurately predict prognosis in patients with r-NENs, as stage IV was associated with a worse overall survival (OS) (hazard ratio [HR] = 8.16; *P* = 0.002) and progression-free survival (PFS) (HR = 14.26; *P* < 0.0001).

As concerned tumor grading, r-NENs are also classified according to the WHO 2019 classification of digestive system tumors[30], which divided NEN into NETs and NECs based on their molecular differences. NETs are then graded based on the proliferation index (mitotic count and Ki67-related proliferation index) and divided into three groups (NET G1, NET G2, and NET G3), while NECs are by definition high-grade neoplasms. There is growing evidence that, besides the diameter of the primary

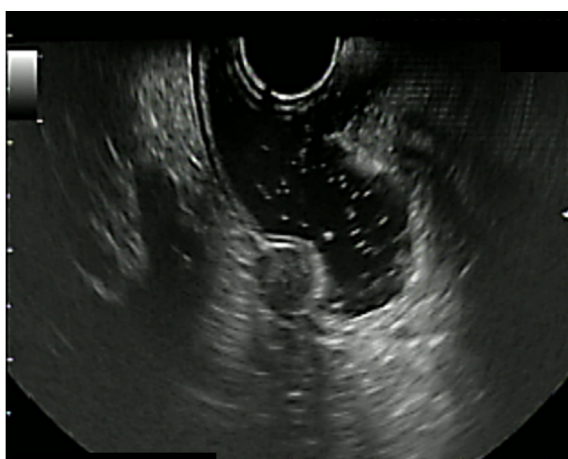


**Table 1** Current evidence about available prognostic factors for either metastatic spread or tumor progression/recurrence in rectal neuroendocrine neoplasms

Prognostic factor	Cut-off	Risk of metastases	Evidence
Tumor size	15 mm	14%	Retrospective large study[27]
Grading	G2	50%	Retrospective study[30]
	G3	33%	Retrospective study[30]
Lymph node status	N2 ( $\geq 5$ positive lymph nodes)	Not quantified	Retrospective study[35]
Depth of invasion	Invasion of the <i>muscularis propria</i>	Not quantified	Retrospective study[37]



DOI: 10.3748/wjg.v28.i11.1123 Copyright ©The Author(s) 2022.

**Figure 1** Endoscopic aspect of a rectal neuroendocrine neoplasm.

DOI: 10.3748/wjg.v28.i11.1123 Copyright ©The Author(s) 2022.

**Figure 2** Endoscopic ultrasound aspect of a rectal neuroendocrine neoplasm.

neoplasm, the tumor grade might play a relevant role in the development of metastases. In a recent retrospective study including 98 patients with r-NENs[31], characterized by a proportion of metastatic disease of 12%, patients with G2 or G3 tumors, regardless of size, were found to be at high risk for the development of metastases; only in G1 tumors, the size (*i.e.*,  $> 20$  mm) was found to be an important predictor of aggressive behavior. Therefore, the authors concluded that grade is a dominant risk factor for metastasis in small and diminutive r-NENs. Again Capurso *et al*[29] confirmed that, besides stage, grade could predict prognosis in r-NENs, with G3 tumors being associated with a worse OS (HR = 15.57;  $P = 0.0004$ ) and PFS (HR = 6.42;  $P = 0.0007$ ).

Other important prognostic factors explored in the literature are: The depth of invasion (with involvement of the *muscularis propria*), the presence of lymphovascular invasion and/or perineural

invasion, the presence of regional nodal metastasis, atypical histology (including anaplasia, frequent mitotic cells, cellular pleomorphism, and mucin production), and mitotic rate, all of which have been suggested as possible prognostic factors for aggressive behavior[32], although evidence is elusive. To date, in fact, it is not yet clear whether these can be considered as independent risk factors[28,33].

The lymph node status is considered as a relevant prognostic factor and current guidelines have always classified r-NENs as N0 *vs* N1 according to the presence or absence of metastatic lymph nodes, respectively[34,35]. As reported in a recent study[36], which included 687 patients with r-NENs retrieved from the National Cancer Database, there is a significant difference in survival among patients with zero positive lymph nodes (N0), 1 to 4 positive lymph nodes (N1), and  $\geq 5$  positive lymph nodes (N2), which might suggest a new nodal staging system to provide a more accurate prognosis.

Furthermore, these findings might highlight the importance of an adequate lymphadenectomy in this specific setting, even if further studies are warranted to help quantify the optimal number of lymph nodes that need to be examined.

Finally, it should be underlined that the evaluation of lymphovascular invasion may frequently suffer from inter-observer variations[37].

Fahy *et al*[38], in a study including 70 r-NENs, reported that tumor size, depth of invasion, presence of lymphovascular invasion, and mitotic rate all correlated with poor outcome and generated a carcinoid of the rectum risk stratification (CaRRS) score based on these factors. The score was reliably correlated with recurrence-free survival and disease-specific survival, and it was based on histopathologic variables which might be assessed at biopsy and might guide the treatment strategy.

In summary, according to the ENETS 2016 Consensus Guidelines and the Union for International Cancer Control/ American Joint Committee on Cancer (UICC/ AJCC) indications, the size of the primary tumor, considering a potential more updated cut-off of 15 mm, and the degree of differentiation with G2 and, indeed, G3 tumors, are considered to be the main independent predictors of a dismal prognosis in r-NENs[39,40]. The number of positive nodes considering  $\geq 5$  positive lymph nodes as a cut-off and the depth of invasion with the invasion of the *muscularis propria* are also associated with a poor prognosis [40].

Further studies are needed to determine whether more aggressive surgical approaches, as well as standardized follow-up protocols, might be beneficial in this specific subgroup of neoplasms.

## TREATMENT OF RECTAL NENS

The therapeutic approach of R-NENs depends on whether a localized, locally advanced, or advanced metastatic disease is present.

### Localized disease

Due to the progressive greater awareness of these neoplasms, the improvement of endoscopic technology, and the increasingly adequate training of endoscopists, 90%-100% of r-NENs are to date detected with a diameter  $\leq 10$  mm. These lesions are usually intramucosal and nearly every  $\leq 10$  mm intramucosal r-NEN is diagnosed as a completely resected incidental tumor. Less than 10 mm NENs have a low risk of both lymphatic invasion and distant metastases, nearly 0.7% and less than 2%, respectively. Endoscopic ultrasound (EU) is highly recommended to exclude this remote occurrence, and to choose the best-suited type of endoscopic resection and its feasibility[39]. Even if, to date, not all studies unequivocally affirm that the *en bloc* resection of small r-NENs is associated with a statistically significant increase in OS, complete mini-invasive endoscopic *en bloc* resection still represents the therapeutic aim for these lesions. A wide variety of endoscopic procedures have been traditionally used to resect r-NENs.

**Standard polypectomy:** Standard polypectomy is performed by using a hot or cold snare. This kind of polypectomy does not guarantee a sufficient complete resection rate of the lesion margins, thus, this technique is no more recommended to treat r-NENs[39].

**Endoscopic mucosal resection:** Conventional endoscopic mucosal resection (EMR) consists of a snare resection of the lesion, which is usually lifted by the submucosal injection of saline solution, in order to guarantee a lower risk of wall perforation and incomplete margin resection, especially in case of sessile lesions[41]. It is a safe, cost-effective, and technically easy procedure, but it results in a remarkable rate of piece-meal resection, and, thus, a high rate of incomplete removal. According to the most reliable evidence, in fact, conventional EMR only leads to 56%-59% of R0 resections in  $\leq 10$  mm r-NENs[26,42]. Moreover, a submucosal fluid injection may paradoxically flatten or even depress loose connective tissue lesions, increase the tissue tension, and even displace the lesion to a hardly accessible different localization.

The underwater EMR (U-EMR) technique was inspired by the observation that the mucosa and submucosa float apart from the muscular layer when colon air is removed from the lumen and it is replaced with water. By doing so, the colon lumen gets less outstretched, it gives birth to a pseudo-pedicle, and a larger mucosal surface can be captured. U-EMR has been shown to be effective in



removing *en bloc* > 20 mm lesions; a multicenter randomized controlled trial comparing conventionally injection-assisted and U-EMR in 219 15-70 mm colorectal laterally spreading tumors demonstrated a significantly higher *en bloc* resection rate for U-EMR (51% *vs* 25%,  $P = 0.001$ ). To date, no comparative studies are available on the *en bloc* resection efficacy between conventional EMR and U-EMR for < 20 mm r-NENs[43].

According to the largest samples available so far, EMR performed with a suction cap, which represents another modified EMR technique (m-EMR), reaches an *en bloc* resection success rate of 100% and a histological complete resection rate of 93% for  $\leq 10$  mm rNENs[44].

The circumferential incision m-EMR (CI-EMR) technique, first described as an option technique for CRC, performed by marking dots by argon plasma coagulation (APC) around the lesion and lifting only the mucosal layer from the muscularis propria with a mixture of glycerin fructose and methylene blue, similarly guarantees an *en bloc* resection rate and a complete resection rate of 97% and 94%, respectively [45]. If an elastic band is placed around the rectal lesion in addition to its cap-assisted suction and its injection-mediated lifting, an even higher rate of complete resection can be guaranteed: In a prospective Korean study enrolling 77 patients who underwent a ligation-assisted m-EMR (L-EMR) of a  $\leq 10$  mm r-NEN, 100% of them achieved an *en bloc* histologically complete resection of the lesion[46]. The m-EMR technique performed with a double-channel gastroscope rather proved to be less effective in terms of complete resection rate and it was associated with a higher rate of adverse events[47].

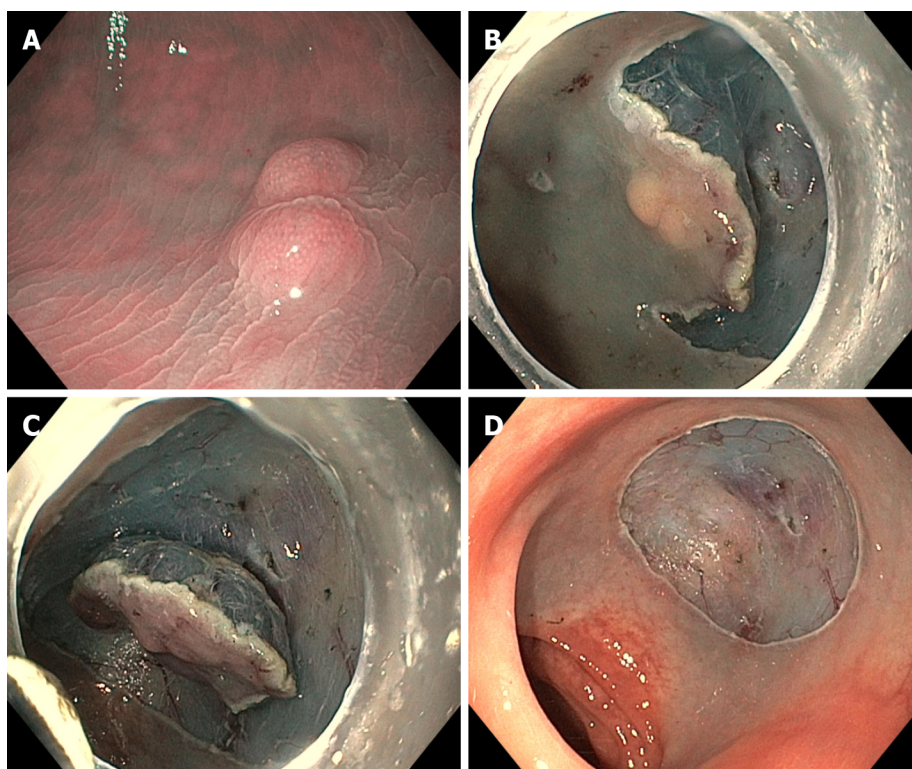
Pooled data deriving from a systematic review and meta-analysis including 11 studies for a total of 811 patients who underwent endoscopic treatment by EMR or any m-EMR of  $\leq 10$  mm localized r-NENs limited to the mucosal layer, demonstrated a statistically significant higher rate of *en bloc* endoscopic removal (odds ratio [OR] = 0.13, 95% confidence interval [CI]: 0.02-0.74,  $P = 0.02$ ) and complete histological resection (OR = 0.23, 95%CI: 0.10-0.51,  $P < 0.01$ ) for m-EMR when compared to conventional EMR. The safety of the different procedures proved to be equal[48]. However, it is interesting to notice that, according to a multivariate analysis including 277 any size r-NENs treated by conventional EMR (243 of them), dual-channel EMR, and CI-EMR (for a total of 44 m-EMRs), the histological complete resection rate was similar among the techniques, proving that the tumor size influences the histological complete resection regardless of the endoscopic treatment modality[49].

Whatever the endoscopic mucosal resection technique used, the EMR area should be always marked after the rectal lesion resection, in order to facilitate future salvage therapy in case that the histological examination of the tumor margins does not result in complete resection.

**Endoscopic submucosal dissection:** Endoscopic submucosal dissection (ESD) consists of a delimitation of a circumferential excision zone by using an electrocauterization knife around the lesion, followed by the creation of a cushion beneath the lesion by the injection of saline solution, or better of 0.4% sodium hyaluronate diluted with the same volume of normal saline solution[50] and, thus, by the execution of a dissection underneath the submucosal layer under direct visualization[37] (Figure 3). It represents a technically difficult procedure, requiring endoscopists' specific training and with a long learning curve [51]. It also requires a longer execution time and is associated with a higher peri-procedural adverse event rate (especially bleeding and perforation) compared to EMR, but no significant differences were demonstrated between ESD and any m-EMR technique in terms of operating time for r-NENs[52].

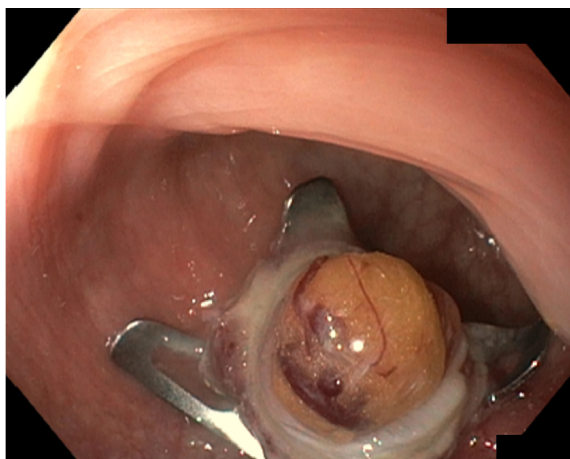
Sometimes even ESD may lead to incomplete resection and thus persistent positive vertical margin, due to deep submucosal invasion of tumor cells. In these situations, other endoscopic resection techniques may overcome the problem: The full thickness resection device (FTRD) Ovesco (Ovesco, Tubingen, Germany) is an over-the-scope clip (OTSC) consisting of a clip and a snare both preloaded on an applicator cap. The FTRD system allows endoscopic full-thickness resection, providing at the same time the closure of the wall defect; it has been shown to be a good option in case of subepithelial lesions (Figure 4).

A broad systematic review and meta-analysis including ten retrospective studies and 650 patients undergoing r-NEN resection, demonstrated a significantly higher complete resection rate in the ESD group compared with the EMR group (relative risk [RR] = 0.89, 95%CI: 0.79-0.99), but a comparable complete resection rate between the ESD group and the m-EMR group (RR = 1.03, 95%CI: 0.95-1.11)[52]. Remarkably, a comparative observational study on 115 patients did not demonstrate statistical significance between ESD and U-EMR in terms of R0 on < 10 mm G1 lesions not invading the *muscularis propriae* (ESD *vs* U-EMR 86.1% R0 *vs* 86.1% R0,  $P = 0.996$ )[53]. It should be emphasized, however, that EMR often presupposes a piecemeal resection, while ESD guarantees an *en bloc* resection, thus representing a possible bias in the definition of complete histological resection R0. As a matter of fact, U-ESD has been already proposed as a promising modified ESD technique[54]. Furthermore, another systematic review and meta-analysis including 25 studies for 1094 patients, reported L-EMR and ESD to be the most effective endoscopic techniques in guaranteeing histological complete resection of  $\leq 10$  mm r-NENs (94.8% and 89.6% for L-EMR and ESD R0 *vs* 59.1% and 72.4% for polypectomy/EMR and CI-EMR R0, respectively)[26]. Interestingly, an additional meta-analysis regrouping seven studies for a total of 386 patients, proposed L-EMR to be the most suitable technique for endoscopic resection of  $\leq 10$  mm r-NENs as far as it proved to achieve a higher R0 rate than ESD (OR = 4.08, 95%CI: 2.42-6.88,  $P < 0.00001$ ), to take significantly less operative time (SMD: -1.59, 95%CI: -2.27 to -0.90,  $P < 0.00001$ ), and to be associated with no significantly higher complications rate (OR = 0.56, 95%CI: 0.28-1.14,  $P = 0.11$ )[55].



DOI: 10.3748/wjg.v28.i11.1123 Copyright ©The Author(s) 2022.

**Figure 3** Endoscopic submucosal dissection of a rectal neuroendocrine neoplasm. A: Rectal neuroendocrine neoplasm aspect before the procedure; B: Initial submucosal dissection beneath the lesion; C: Almost completed submucosal dissection beneath the lesion; D: Final aspect of the endoscopic submucosal dissection eschar.



DOI: 10.3748/wjg.v28.i11.1123 Copyright ©The Author(s) 2022.

**Figure 4** The full thickness resection device Ovesco over-the-scope OTSC system is a single-use metallic clip preloaded on an applicator cap that can be attached to any standard endoscope. The endoscopic clip can be placed underneath an epithelial/subepithelial lesion and it guarantees at the same time its full-thickness removal and the wall defect closure. In this picture, the Ovesco clip is placed underneath a rectal neuroendocrine neoplasm and grabs its complete thickness.

Conversely, one study reported that ESD, in comparison to m-EMR, achieved a higher R0 resection rate (100% *vs* 70%) and lower recurrence (0% *vs* 17%) in 55 patients with 10-16 mm r-NENs. Thus, ESD appears to be the most appropriate endoscopic technique for the resection of > 10 mm r-NENs[25]. Both m-EMR and ESD were demonstrated to be feasible also for salvage treatment in incomplete primary endoscopic resection, especially for ≤ 10 mm r-NENs[56].

What has been revealed so far must always consider that comparative studies between endoscopic resection techniques are heterogeneous, and limited in samples and volume, with limited follow-up time. To date, a Chinese open-label double-arm randomized clinical trial comparing cap-assisted EMR to ESD for the treatment of rectal NENs less than 10 mm is about to start the recruiting phase

(NCT03982264).

**Resectable advanced disease**

Locally advanced r-NENS, which are neoplasms invading submucosal layers, conventionally with a lateral spreading diameter  $\geq 10$  mm, but still without distant metastatic invasion, represent the real frontier of radical removal in the field of rectal tumors. They are associated with a moderate metastatic frequency rate of 5%–15% and with a moderate risk of lymphatic involvement[57], and thus, a long debate on the most appropriate resection technique is nowadays still ongoing. According to the ENETS and UICC/AJCC guidelines, rectal NENs measuring 10–19 mm at their first endoscopic diagnosis, should be investigated in detail to exclude an invasion of the muscularis mucosae and of the locoregional lymph nodes. Rectal magnetic resonance imaging (MRI) and/or rectal endoscopic ultrasound (r-EUS) represent the most reliable investigating techniques for staging rectal lesions: If the rectal lesion is limited to the mucosa or submucosa, which corresponds to a T1 lesion, regardless of its lateral spreading  $> 10$  mm, the only local resection treatment (may it be endoscopic or transanal) has proved to be effective in guaranteeing a radical resection and a very limited recurrence rate over follow-up[58]. Radical surgical resection for 10–19 mm r-NENS without muscularis or lymphatic invasion does not relate to a higher rate of radical resection and radically reduces the patients' quality of life[59].

Contrariwise, T2 or N+ stage lesions should be accurately studied by total body imaging such as 68-Ga-DOTATATE-PET and CT scanning. Once distant metastases are excluded, a surgical radical attempt by laparoscopic low anterior resection (LAR) with or without total mesorectal excision (TME), or even abdomino-perineal resection should be preferred. It has to be noted that, according to the latest European and American guidelines, rectal tumors above 20 mm are automatically considered as T2 stage lesions, as far as they are related to an up to 80% rate of distant metastases.

**Transanal endoscopic microsurgery:** Transanal endoscopic microsurgery (TEM) is a minimally invasive surgical technique that allows the local full-thickness excision of rectal lesions localized up to 20 cm from the anal verge, avoiding the segmental surgical resection[60]. TEM is usually performed under general anesthesia, in the lithotomy or clasp knife position; it implies the use of anal retractors to dilate the anal sphincter and to maintain exposure[61]. It requires a multi-channel transanal device, which combines the use of a rigid rectoscope with the magnified tridimensional vision. The device is able to control the endoluminal pressure, in order to precisely follow the electrocautery dots previously performed to delimitate the scheduled operating area[37]. Normal saline solution is injected into the submucosal plane with an injector syringe to create a visible submucosal cushion for the elevation of the lesion; the tumor then is excised with electrocautery or an ultrasonic knife under direct vision, then the wound can be closed with absorbable sutures[61].

R-NENs between 10 and 20 mm, limited to the submucosal layer, and without lymphatic invasion can be either approached with a complete *en bloc* endoscopic resection through ESD or with a complete microsurgical excision through TEM.

Both ESD and TEM demonstrated to be superior to m-EMR for  $> 10$  mm r-NENS, but the two of them have not been appropriately compared in prospective observational studies yet[62]. According to single centers experiences, TEM implies a longer operative time than ESD and a major incidence of anesthesia-related adverse events (such as acute retention of urine); moreover, anal dilation or retraction may cause higher postoperative morbidity[63]. On the other hand, TEM provides deeper vertical resection margins in a full-thickness fashion[63]. Furthermore, in case of local recurrence, the existence of fibrosis in the submucosal layer may represent a limit for the mucosal lifting during ESD and thus may reduce the complete *en bloc* resection success rate[64].

Hence, according to these limited experiences, ESD might be preferred to TEM in case of a first incidental 10–19 mm r-NEN, based on its lower morbidity rate, shorter operative time and, consequently, lower costs; TEM on the contrary might be the first therapeutic choice of scar embedded recurrent 10–19 mm r-NENs located within the first 20 cm of the rectum from the anal verge. Overall, to date, the indication to perform one of the two proposed techniques still depends more on the team expertise rather than on robust superiority evidence[63]. Prospective comparative studies should be launched to better define the treatment algorithm of resectable 10–19 mm r-NENs.

Salvage TEM for incomplete endoscopic resection proved to be effective also in case of  $> 10$  mm lesions[65].

Conventional transanal resection (TAR) represents the exact equivalent to TEM for  $< 20$  mm r-NENs localized within 6 cm from the anal verge.

**Low anterior resection or intersphincteric resection, with or without TME:** R-NENs extended to the muscularis mucosae or those with lymph node involvement, as previously mentioned, are indicated for surgical resection. Low anterior resection (LAR) and intersphincteric resection, with appropriate lymph-node resection through TME, represent the most commonly performed laparoscopic techniques, which are chosen depending on the localization of the r-NEN. Either laparoscopic LAR or intersphincteric resection often implies a temporary protective ileostomy[66]. Anal preservation, if possible, is mandatory, as far as it is associated with a much higher quality of life. Fortunately, the anal localization of rectal neoplasms is rare, so that anal preservation is statistically guaranteed in most cases.



In the case of anus involvement, abdominoperineal resection with definitive colostomy represents the most appropriate surgical technique.

### **Systemic therapies for advanced disease**

As previously mentioned, only around 10% of r-NENs measure > 10 mm at the diagnosis, so it can be assumed that r-NENs are diagnosed as an advanced metastatic disease in a low number of cases[15]. While most r-NETs are localized, their management should be tailored depending on the presence or absence of metastases-predicting factors, including tumor size, endoscopic aspect, T stage, grade, and lymphovascular invasion, as explained before. Endoscopic ultrasonography is the most relevant technique for locoregional assessment[37]. Moreover, it has been recommended to perform pelvic MRI (otherwise, CT scan) as part of the initial workup to evaluate loco-regional spreading and additional explorations in all cases of high-risk r-NENs (*i.e.*, the ones that show factors predicting aggressive disease, see above): They should include contrast-enhanced thoracic-abdominal-pelvic CT scan, liver MRI – especially diffusion-weighted sequences – which has a better sensitivity than CT scan and somatostatin-receptor isotopic imaging (scintigraphy or positron-emitting tomography)[37]. In the presence of advanced disease with distant metastases, a systemic approach represents the first-line therapeutic strategy. In this context, the goal of systemic therapy is disease control and palliation of symptoms. In fact, none of the up-to-date available systemic treatments yet provided a radical cure for r-NENs, but rather a disease progression-free stabilization with variable duration, depending on the different prognostic factors. Given the fact that r-NENs are usually non-functional, systemic therapies are usually used for their antiproliferative effect rather than for their symptom palliation effect. There are several systemic therapeutic options for advanced r-NENs, not substantially different from the ones for other NENs, although studies evaluating specific response rates in r-NENs are limited. Finally, the potential advantage of palliative surgery, either as primary tumor resection or debulking surgery, is still controversial.

**Somatostatin analogs:** The use of somatostatin analogs (SSAs), mainly lanreotide and octreotide, is the standard first-line therapy in both functioning and non-functioning NENs, arising from both the gastrointestinal and pancreatic tract[67,68]. However, these studies collected only a few cases of r-NENs and none of these studies were focused specifically on r-NENs; in particular, only in the CLARINET study, 14 patients with hindgut NENs were included[68], demonstrating a significantly prolonged PFS (HR = 0.47; 95%CI: 0.30-0.73) in lanreotide treated patients; the treatment of r-NENs with SSAs is thus based on a very low number of patients.

Octreotide long-lasting release is used at a dose of 30 mg every 4 wk i.m. and lanreotide auto-gel is used at a dose of 120 mg every 4 wk, injected subcutaneously. They are traditionally very well-tolerated drugs[69]. A tumor gross-size reduction with SSAs was achieved in no more than 10% of the cases[69].

A superiority trial comparing octreotide and lanreotide is today active (NCT03289741).

**Interferon-alpha:** Interferon-alpha (INF- $\alpha$ ) has been also approved as a symptomatic therapeutic option, especially in addition to SSAs for refractory syndromes[70].

It can be used in advanced NENs as an anti-proliferative option whenever other traditional anti-proliferative systemic drugs are not feasible[71]. An open-label single-arm interventional pharmac-immunological study has recruited patients with histologically proved NETs to evaluate the potential immunomodulatory synergy of the association of metronomic cyclophosphamide and IFN- $\alpha$  (NCT02838342); no preliminary results have been posted so far.

Cases of r-NENs included in these studies are sporadic.

**Targeted agents (everolimus and sunitinib):** Based on the results of two randomized, double-blind, prospective, placebo-controlled studies, the mTOR inhibitor everolimus has been used in advanced pancreatic (RADIANT-3) and extra-pancreatic NENs (RADIANT-4). Specifically, in the RADIANT-4 trial, an everolimus benefit in terms of PFS compared to placebo (HR = 0.56; 95%CI 0.40-1.05) has been demonstrated in the GI or lung NENs subgroups' analysis[72].

The multitargeted tyrosine kinase inhibitor (TKI) sunitinib has demonstrated an improved PFS from 5.5 to 11.4 mo only in metastatic pancreatic NENs (p-NENs)[73]. Therefore, it cannot be recommended in GI-NENs outside clinical trials, which are still ongoing to date (NCT00056693 and NCT02315625).

Other multikinase inhibitors such as cabozantinib and sorafenib have been proposed as alternative options in metastatic disease, but strong evidence should still be spread (NCT05048901, NCT00605566, and NCT00131911).

Furthermore, the association between TKI and chemotherapy has been studied; a single-arm, open-label trial testing the efficacy of the association between everolimus 10 mg daily and temozolomide 150 mg/m<sup>2</sup> for 7 d every 2 wk has been recruiting patients with a histologically proven primary gastro-entero-pancreatic (GEP) neuroendocrine carcinoma with a Ki67 index of 20%-55%; the results are about to be published (NCT02248012).

**Radioligand therapy:** Radioligand therapy (RLT) represents a therapeutic option in progressive well-differentiated G1/2 NENs with homogenous somatostatin receptor expression[74].

NETTER-1, a recent multicenter prospective phase III trial including 229 patients with metastatic gastro-intestinal well-differentiated G1 or G2 NENs, compared patients' prognosis between those undergoing 177Lu-DOTATATE (Lutathera) in association with octreotide long-lasting release treatment, and those only undergoing high-dose octreotide long-lasting release; 177Lu-DOTATATE proved its superiority in terms of PFS (median PFS > 19.9 mo) and promising results are on the point to be published also regarding its effect on the OS and the patients' quality of life[75]. This study did not explicitly enroll patients affected by r-NENs, rather it focused on midgut neoplasms, with four colonic NENs (none of them were rectal).

The NETTER-2 phase III, multi-center, randomized, open-label trial is today ongoing: It aims to determine if first-line treatment Lutathera in combination with LAR prolongs PFS in G2/3 GEP-NENs patients (NCT03972488). A prospective single-arm, multicenter trial is today enrolling 195 patients with progressed NETs to evaluate the efficacy of 177Lu-DOTATATE in terms of 12-mo PFS (NCT02743741).

**Chemotherapy:** G3 NENs are represented preferentially by poorly differentiated r-NECs, whereas r-NET G3 are rare. R-NECs represent a distinct category separated from other r-NENs, because of a highly aggressive biological behavior with a poor prognosis and distinctive histological picture (small and large cell carcinomas)[76]. This entity is usually treated with chemotherapy, also according to the latest ESMO guidelines[77], in which the use of chemotherapy is highly recommended for metastatic low-differentiated G3 NECs.

Chemotherapy regimens containing cisplatin or carboplatin in combination with etoposide could be considered as a first-line therapy in patients with advanced GEP-NECs. Irinotecan is a valid alternative to etoposide in the same cases[78]. Regarding the rare cases of advanced G1/2 r-NENs, streptozocin and its association with 5-fluorouracil and doxorubicin are the most used schemes, even if they are associated with a < 25% clinical and radiological response rate[79]. Three-drug regimens (5-FU, dacarbazine, and epirubicin), used historically since the 1990s, are associated with a response rate of up to 30% of cases[80].

**Combined radiation therapy and chemotherapy in high-grade r-NECs:** Interesting data were published regarding the efficacy of chemotherapy combined with radiotherapy in poorly differentiated and aggressive high-grade G3 rNECs, which by definition have a Ki67 index  $\geq 20\%$  and a mitotic index  $\geq 20/10$  high power fields.

According to a preliminary retrospective univariate and multivariate analysis, radiation therapy (RT) proved to significantly improve OS in patients affected by G3 r-NECs treated by both surgery and RT compared with G3 r-NECs that underwent only surgery (HR = 0.393; 95%CI: 0.206-0.750;  $P = 0.009$ )[81]. Furthermore, according to a multicenter American multidisciplinary study, chemotherapy (based on platinum, etoposide, and fluoropyrimidine) with or without RT and surgery, obtained similar outcomes in terms of both PFS (13.0 mo *vs* 13.2 mo,  $P = 0.75$ ) and OS (49.1 mo *vs* 39.2 mo,  $P = 0.42$ )[82]. These findings highlighted that not only does RT improve r-NECs prognosis, but also when combined with chemotherapy, it leads to similar outcomes compared to surgery. Table 2 shows a resume of the main systemic therapies for advanced disease.

## SURVEILLANCE

The indications for the follow-up of r-NENs are scarce in the literature. Furthermore, the few indications that we can find in the consensus guidelines are mostly based on expert opinions rather than evidence-based data. Moreover, the main guidelines give follow-up indications mainly based on the size of the r-NEN[83], while it is documented that grade is the most heavily prognostic factor.

According to the ENETS 2017 guidelines, it is advocated that follow-up occurs in specialized NEN centers or at least in hospitals with close collaboration with specialized NEN centers[84]. The suggested type and timing of the follow-up are based on the tumor size, grade, and operative outcome (if curatively resected), respectively. In the case of small (< 10 mm) G1/2 r-NENs, when curatively resected, only one endoscopic check at 12 mo from the endoscopic resection is advisable. No further investigations are needed. For 10-20 mm G1/2 lesions, an annual endoscopic follow-up is recommended. Moreover, classical radiological imaging by using either CT or MRI is recommended. Also, somatostatin receptor imaging (SRI) is advisable every 12-24 mo. For G1/2 lesions > 20 mm, both curatively and non-curatively resected, a closer follow-up (every 3-12 mo) is recommended, by using endoscopy every 6-12 mo, CT or MRI every 3-12 mo, and SRI every 12-24 mo. In rare cases of G3 NEC/NETs, both curatively and non-curatively resected, a 3-mo follow-up is suggested, by performing CT or MRI; an endoscopy is recommended every 6-12 mo; nuclear medicine imaging (both SRI and FDG-PET) is advisable every 12 mo. In any case, an EUS examination may be required if recurrence or progression is suspected (Figure 5).

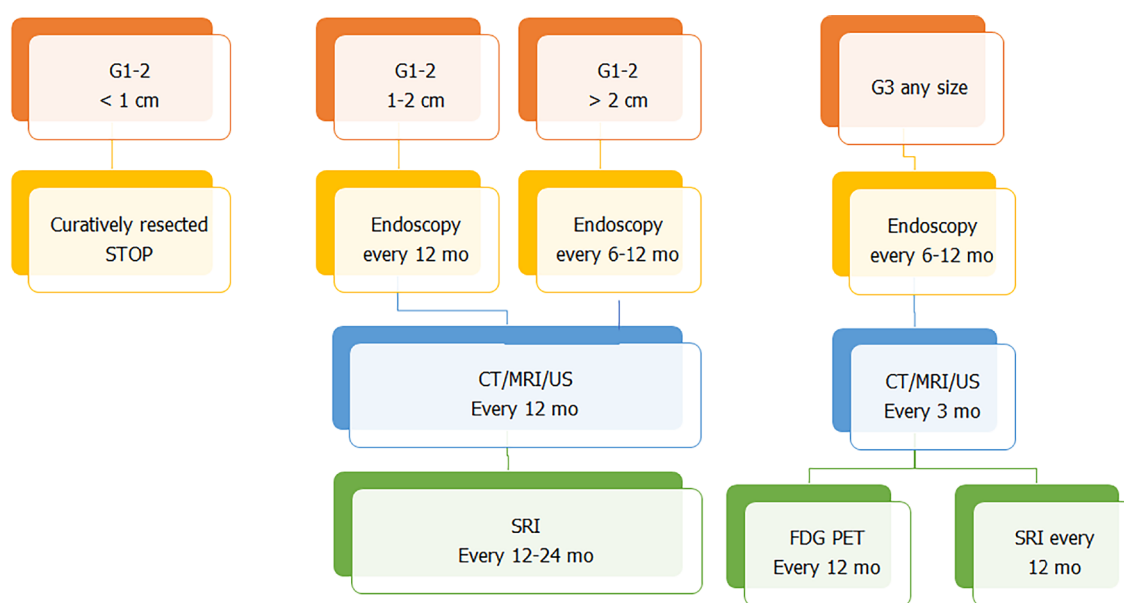


**Table 2 Systemic therapies for advanced disease**

Pharmacological class	Therapeutic agent	Superiority vs placebo	Main ongoing clinical trials
Somatostatin analogs	Octreotide (30 mg/4 wk i.m.)	Yes[70]	NCT04129255
	Lanreotide (120 mg/4 wk s.c.)	Yes[69]	NCT03289741 (octreotide <i>vs</i> lanreotide)
Cytokines	Interferon- $\alpha$ (3 MIU/three times a week s.c.)	Yes[72]	NCT02838342 (association with cyclophosphamide)
Targeted agents	Everolimus (10 mg/d p.o.)	Yes[73]	NCT02248012 (association with temozolomide)
	Sunitinib (50 mg/d p.o.)	Yes[74] <sup>1</sup>	NCT00056693NCT02315625
	Cabozantinib (40-60 mg/d p.o.)	NA	NCT05048901
	Sorafenib (800 mg/d p.o.)	NA	NCT00605566, NCT00131911
Radioligand therapy	177Lu-DOTATATE (Lutathera)	Yes[76]	NCT02743741, NCT03972488 (combination with LAR)
Chemotherapy	Cisplatin/carboplatin $\pm$ etoposide/irinotecan	Yes[79]	NCT03963193 (etoposide + cisplatin <i>vs</i> irinotecan + cisplatin)
	Streptozocin $\pm$ 5-FU $\pm$ doxorubicin	Yes[80]	NCT00602082
	5-FU $\pm$ dacarbazine $\pm$ epirubicin	Yes [81]	NA

<sup>1</sup>Only for p-NENs.

LAR: Long-acting release octreotide; NA: Not available; 5-FU: 5-fluorouracil.



DOI: 10.3748/wjg.v28.i11.1123 Copyright ©The Author(s) 2022.

**Figure 5 Surveillance flow-chart.** CT: Computed tomography; MRI: Magnetic resonance imaging; US: Ultrasound; SRI: Somatostatin receptor imaging; FDG-PET: Positron emission tomography with 18F-fluorodeoxyglucose.

## CONCLUSION

R-NENs are among the most frequent digestive NENs, together with small bowel NENs and their incidence has hugely increased over the last few years, likely due to the widespread use of endoscopic screening for CRC and the improvement in endoscopic techniques. As metabolic syndrome appears as a recognized risk factor for the development of r-NENs, this might have partially contributed to the increasing incidence of these neoplasms.

To date, however, there is still an underestimation of the incidence and prevalence of these neoplasms, as they are often not recognized by the endoscopist. In the increasingly vast panorama of artificial intelligence, its application to gastrointestinal endoscopy may help in detecting and thus treating r-NENs. Several predictors of metastases, progression, and/or recurrence of r-NENs have been

proposed, and among them, the diameter of the primary neoplasm and the tumor grade are the most important, although the relevance of each of these factors has not been clearly established. Traditionally, well-differentiated r-NENs smaller than 10 mm are endoscopically removed given their low metastatic risk, whereas tumors larger than 20 mm are suggested to be surgically resected given their high risk of distant spreading. However, a potential more updated cut-off size of 15 mm and the degree of differentiation with G2 and, indeed, G3 tumors, are considered to be the main independent predictors of metastatic spread and dismal prognosis. Moreover, the number of positive nodes ( $\geq 5$  as a cut-off) and the depth of invasion with the invasion of the *muscularis propria* are also associated with a poor prognosis.

Locally advanced r-NENs with a lateral spreading diameter  $\geq 10$  mm, but still T1N0 should be addressed at first endoscopically; while surgical techniques should be adopted to address lesions invading the *muscularis propria* or loco-regional lymph nodes. TEM is the treatment of choice for scar-embedded recurrent resectable lesions.

The indications for surveillance are scarce and mainly based on experts' opinions rather than evidence-based guidelines. According to the ENETS 2017 guidelines, the follow-up is based on the tumor size, grade, and operative outcome.

Large prospective studies should be encouraged to define standardized guidelines for r-NENs and to identify clear-cut prognostic factors and scores which might help in the management of these neoplasms.

## FOOTNOTES

**Author contributions:** Massironi S, Gallo C, and Rossi RE conceived of the contents of the manuscript; Gallo C, Boskoski I, and Barbaro F developed the revision regarding the therapeutic options for r-NENs; Boskoski I and Barbaro F furnished the pictures; Massironi S developed the introduction, the surveillance paragraph, and the conclusive chapter; Rossi RE and Cavalcoli F developed the paragraph regarding the risk factors; Invernizzi P together with all authors, revised entirely the manuscript and contributed to its final aspect.

**Conflict-of-interest statement:** The authors declare no conflict of interests for this article.

**Open-Access:** This article is an open-access article that was selected by an in-house editor and fully peer-reviewed by external reviewers. It is distributed in accordance with the Creative Commons Attribution NonCommercial (CC BY-NC 4.0) license, which permits others to distribute, remix, adapt, build upon this work non-commercially, and license their derivative works on different terms, provided the original work is properly cited and the use is non-commercial. See: <https://creativecommons.org/licenses/by-nc/4.0/>

**Country/Territory of origin:** Italy

**ORCID number:** Camilla Gallo 0000-0002-7598-7220; Roberta Elisa Rossi 0000-0003-4208-4372; Federica Cavalcoli 0000-0002-7745-7573; Federico Barbaro 0000-0002-7928-3757; Ivo Boškoski 0000-0001-8194-2670; Pietro Invernizzi 0000-0003-3262-1998; Sara Massironi 0000-0003-3214-8192.

**S-Editor:** Ma YJ

**L-Editor:** Wang TQ

**P-Editor:** Ma YJ

## REFERENCES

- 1 Dasari A, Shen C, Halperin D, Zhao B, Zhou S, Xu Y, Shih T, Yao JC. Trends in the Incidence, Prevalence, and Survival Outcomes in Patients With Neuroendocrine Tumors in the United States. *JAMA Oncol* 2017; **3**: 1335-1342 [PMID: 28448665 DOI: 10.1001/jamaoncol.2017.0589]
- 2 Wang XY, Chai NL, Linghu EQ, Li HK, Zhai YQ, Feng XX, Zhang WG, Zou JL, Li LS, Xiang JY. Efficacy and safety of hybrid endoscopic submucosal dissection compared with endoscopic submucosal dissection for rectal neuroendocrine tumors and risk factors associated with incomplete endoscopic resection. *Ann Transl Med* 2020; **8**: 368 [PMID: 32355812 DOI: 10.21037/atm.2020.02.25]
- 3 Osagiede O, Habermann E, Day C, Gabriel E, Merchea A, Lemini R, Jabbal IS, Colibaseanu DT. Factors associated with worse outcomes for colorectal neuroendocrine tumors in radical versus local resections. *J Gastrointest Oncol* 2020; **11**: 836-846 [PMID: 33209480 DOI: 10.21037/jgo-20-193]
- 4 Ploekinger U, Kloeppel G, Wiedenmann B, Lohmann R; representatives of 21 German NET Centers. The German NET-registry: an audit on the diagnosis and therapy of neuroendocrine tumors. *Neuroendocrinology* 2009; **90**: 349-363 [PMID: 19776553 DOI: 10.1159/000242109]
- 5 Chang JS, Chen LT, Shan YS, Chu PY, Tsai CR, Tsai HJ. An updated analysis of the epidemiologic trends of neuroendocrine tumors in Taiwan. *Sci Rep* 2021; **11**: 7881 [PMID: 33846396 DOI: 10.1038/s41598-021-86839-2]
- 6 Fraenkel M, Kim M, Faggiano A, de Herder WW, Valk GD; Knowledge NETwork. Incidence of gastroenteropancreatic

- neuroendocrine tumours: a systematic review of the literature. *Endocr Relat Cancer* 2014; **21**: R153-R163 [PMID: 24322304 DOI: 10.1530/ERC-13-0125]
- 7 **Scherübl H**, Cadiot G. Early Gastroenteropancreatic Neuroendocrine Tumors: Endoscopic Therapy and Surveillance. *Visc Med* 2017; **33**: 332-338 [PMID: 29177161 DOI: 10.1159/000459404]
  - 8 **Basuroy R**, O'Donnell CM, Srirajskanthan R, Ramage JK. Ileocolonic neuroendocrine tumours identified in the English bowel cancer screening programme. *Colorectal Dis* 2018; **20**: O85-O91 [PMID: 29368418 DOI: 10.1111/codi.14033]
  - 9 United European Gastroenterology Journal. Volume 7, Number 8, Oct 01, 2019. Available from: <https://journals.sagepub.com/toc/uega/7/8>
  - 10 **Moon CM**, Huh KC, Jung SA, Park DI, Kim WH, Jung HM, Koh SJ, Kim JO, Jung Y, Kim KO, Kim JW, Yang DH, Shin JE, Shin SJ, Kim ES, Joo YE. Long-Term Clinical Outcomes of Rectal Neuroendocrine Tumors According to the Pathologic Status After Initial Endoscopic Resection: A KASID Multicenter Study. *Am J Gastroenterol* 2016; **111**: 1276-1285 [PMID: 27377520 DOI: 10.1038/ajg.2016.267]
  - 11 **Volante M**, Grillo F, Massa F, Maletta F, Mastracci L, Campora M, Ferro J, Vanoli A, Papotti M. Neuroendocrine neoplasms of the appendix, colon and rectum. *Pathologica* 2021; **113**: 19-27 [PMID: 33686307 DOI: 10.32074/1591-951X-230]
  - 12 **Dąbkowski K**, Szczepkowski M, Kos-Kudła B, Starzynska T. Endoscopic management of rectal neuroendocrine tumours. How to avoid a mistake and what to do when one is made? *Endokrynol Pol* 2020; **71**: 343-349 [PMID: 32852049 DOI: 10.5603/EP.a2020.0045]
  - 13 **Veyre F**, Lambin T, Fine C, Fenouil T, Rostain F, Walter T, Pioche M. Endoscopic characterization of rectal neuroendocrine tumors with virtual chromoendoscopy: differences between benign and malignant lesions. *Endoscopy* 2021; **53**: E215-E216 [PMID: 32916731 DOI: 10.1055/a-1244-9526]
  - 14 **Shim KN**, Yang SK, Myung SJ, Chang HS, Jung SA, Choe JW, Lee YJ, Byeon JS, Lee JH, Jung HY, Hong WS, Kim JH, Min YI, Kim JC, Kim JS. Atypical endoscopic features of rectal carcinoids. *Endoscopy* 2004; **36**: 313-316 [PMID: 15057680 DOI: 10.1055/s-2004-814202]
  - 15 **Ahmed M**. Gastrointestinal neuroendocrine tumors in 2020. *World J Gastrointest Oncol* 2020; **12**: 791-807 [PMID: 32879660 DOI: 10.4251/wjgo.v12.i8.791]
  - 16 **Maione F**, Chini A, Milone M, Gennarelli N, Manigrasso M, Maione R, Cassese G, Pagano G, Tropeano FP, Luglio G, De Palma GD. Diagnosis and Management of Rectal Neuroendocrine Tumors (NETs). *Diagnostics (Basel)* 2021; **11** [PMID: 33923121 DOI: 10.3390/diagnostics11050771]
  - 17 Current status and limitations of artificial intelligence in colonoscopy - Hann - 2021 - United European Gastroenterology Journal - Wiley Online Library. Available from: <https://onlinelibrary.wiley.com/doi/full/10.1002/ueg2.12108>
  - 18 **Park SB**, Kim DJ, Kim HW, Choi CW, Kang DH, Kim SJ, Nam HS. Is endoscopic ultrasonography essential for endoscopic resection of small rectal neuroendocrine tumors? *World J Gastroenterol* 2017; **23**: 2037-2043 [PMID: 28373770 DOI: 10.3748/wjg.v23.i11.2037]
  - 19 **Chen HT**, Xu GQ, Teng XD, Chen YP, Chen LH, Li YM. Diagnostic accuracy of endoscopic ultrasonography for rectal neuroendocrine neoplasms. *World J Gastroenterol* 2014; **20**: 10470-10477 [PMID: 25132764 DOI: 10.3748/wjg.v20.i30.10470]
  - 20 **Moon JS**. Endoscopic ultrasound-guided fine needle aspiration in submucosal lesion. *Clin Endosc* 2012; **45**: 117-123 [PMID: 22866250 DOI: 10.5946/ce.2012.45.2.117]
  - 21 **Pyo JH**, Hong SN, Min BH, Lee JH, Chang DK, Rhee PL, Kim JJ, Choi SK, Jung SH, Son HJ, Kim YH. Evaluation of the risk factors associated with rectal neuroendocrine tumors: a big data analytic study from a health screening center. *J Gastroenterol* 2016; **51**: 1112-1121 [PMID: 27025841 DOI: 10.1007/s00535-016-1198-9]
  - 22 **Ko SH**, Baeg MK, Ko SY, Jung HS. Clinical characteristics, risk factors and outcomes of asymptomatic rectal neuroendocrine tumors. *Surg Endosc* 2017; **31**: 3864-3871 [PMID: 28078467 DOI: 10.1007/s00464-016-5413-9]
  - 23 **Jung YS**, Yun KE, Chang Y, Ryu S, Park JH, Kim HJ, Cho YK, Sohn CI, Jeon WK, Kim BI, Park DI. Risk factors associated with rectal neuroendocrine tumors: a cross-sectional study. *Cancer Epidemiol Biomarkers Prev* 2014; **23**: 1406-1413 [PMID: 24813818 DOI: 10.1158/1055-9965.EPI-14-0132]
  - 24 **Djiogbe S**, Nwabo Kamdje AH, Vecchio L, Kipanyula MJ, Farahna M, Aldebasi Y, Seke Etet PF. Insulin resistance and cancer: the role of insulin and IGFs. *Endocr Relat Cancer* 2013; **20**: R1-R17 [PMID: 23207292 DOI: 10.1530/ERC-12-0324]
  - 25 **Matsubashi N**, Takahashi T, Tomita H, Araki H, Ibuka T, Tanaka K, Tanahashi T, Matsui S, Sasaki Y, Tanaka Y, Okumura N, Yamaguchi K, Osada S, Yoshida K. Evaluation of treatment for rectal neuroendocrine tumors sized under 20 mm in comparison with the WHO 2010 guidelines. *Mol Clin Oncol* 2017; **7**: 476-480 [PMID: 28894583 DOI: 10.3892/mco.2017.1326]
  - 26 **de Mestier L**, Brixi H, Gincul R, Ponchon T, Cadiot G. Updating the management of patients with rectal neuroendocrine tumors. *Endoscopy* 2013; **45**: 1039-1046 [PMID: 24163193 DOI: 10.1055/s-0033-1344794]
  - 27 **Park CH**, Cheon JH, Kim JO, Shin JE, Jang BI, Shin SJ, Jeon YT, Lee SH, Ji JS, Han DS, Jung SA, Park DI, Baek IH, Kim SH, Chang DK. Criteria for decision making after endoscopic resection of well-differentiated rectal carcinoids with regard to potential lymphatic spread. *Endoscopy* 2011; **43**: 790-795 [PMID: 21735371 DOI: 10.1055/s-0030-1256414]
  - 28 **Concors SJ**, Sinnamon AJ, Folkert IW, Mahmoud NN, Fraker DL, Paulson EC, Roses RE. Predictors of Metastases in Rectal Neuroendocrine Tumors: Results of a National Cohort Study. *Dis Colon Rectum* 2018; **61**: 1372-1379 [PMID: 30312223 DOI: 10.1097/DCR.0000000000001243]
  - 29 **Capurso G**, Gaujoux S, Pescatori LC, Panzuto F, Panis Y, Pilozzi E, Terris B, de Mestier L, Prat F, Rinzivillo M, Coriat R, Coulevard A, Delle Fave G, Ruszniewski P. The ENETS TNM staging and grading system accurately predict prognosis in patients with rectal NENs. *Dig Liver Dis* 2019; **51**: 1725-1730 [PMID: 31405587 DOI: 10.1016/j.dld.2019.07.011]
  - 30 **Nagtegaal ID**, Odze RD, Klimstra D, Paradis V, Rugge M, Schirmacher P, Washington KM, Carneiro F, Cree IA; WHO Classification of Tumours Editorial Board. The 2019 WHO classification of tumours of the digestive system. *Histopathology* 2020; **76**: 182-188 [PMID: 31433515 DOI: 10.1111/his.13975]
  - 31 **Folkert IW**, Sinnamon AJ, Concors SJ, Bennett BJ, Fraker DL, Mahmoud NN, Metz DC, Stashek KM, Roses RE. Grade is

- a Dominant Risk Factor for Metastasis in Patients with Rectal Neuroendocrine Tumors. *Ann Surg Oncol* 2020; **27**: 855-863 [PMID: [31701298](#) DOI: [10.1245/s10434-019-07848-0](#)]
- 32 **Shields CJ**, Tiret E, Winter DC; International Rectal Carcinoid Study Group. Carcinoid tumors of the rectum: a multi-institutional international collaboration. *Ann Surg* 2010; **252**: 750-755 [PMID: [21037430](#) DOI: [10.1097/SLA.0b013e3181fb8df6](#)]
  - 33 **Wang Z**, Liu Z, Wen Z, Li R, An K, Mei S, Chen J, Shen H, Li J, Zhao F, Wei F, Xiao T, Liu Q. Evaluation of radical surgical treatment in the management of 58 locally advanced rectal neuroendocrine neoplasms, one multicenter retrospective study. *Eur J Surg Oncol* 2021; **47**: 3166-3174 [PMID: [34294465](#) DOI: [10.1016/j.ejso.2021.07.010](#)]
  - 34 **Anthony LB**, Strosberg JR, Klimstra DS, Maples WJ, O'Dorisio TM, Warner RR, Wiseman GA, Benson AB 3rd, Pommier RF; North American Neuroendocrine Tumor Society (NANETS). The NANETS consensus guidelines for the diagnosis and management of gastrointestinal neuroendocrine tumors (nets): well-differentiated nets of the distal colon and rectum. *Pancreas* 2010; **39**: 767-774 [PMID: [20664474](#) DOI: [10.1097/MPA.0b013e3181ec1261](#)]
  - 35 **Rindi G**, Klöppel G, Couvelard A, Komminoth P, Körner M, Lopes JM, McNicol AM, Nilsson O, Perren A, Scarpa A, Scoazec JY, Wiedenmann B. TNM staging of midgut and hindgut (neuro) endocrine tumors: a consensus proposal including a grading system. *Virchows Arch* 2007; **451**: 757-762 [PMID: [17674042](#) DOI: [10.1007/s00428-007-0452-1](#)]
  - 36 **Fields AC**, McCarty JC, Ma-Pak L, Lu P, Irani J, Goldberg JE, Bleday R, Chan J, Melnitchouk N. New lymph node staging for rectal neuroendocrine tumors. *J Surg Oncol* 2019; **119**: 156-162 [PMID: [30481376](#) DOI: [10.1002/jso.25307](#)]
  - 37 **de Mestier L**, Lorenzo D, Fine C, Cros J, Hentic O, Walter T, Panis Y, Couvelard A, Cadiot G, Ruszniewski P. Endoscopic, transanal, laparoscopic, and transabdominal management of rectal neuroendocrine tumors. *Best Pract Res Clin Endocrinol Metab* 2019; **33**: 101293 [PMID: [31326374](#) DOI: [10.1016/j.beem.2019.101293](#)]
  - 38 **Fahy BN**, Tang LH, Klimstra D, Wong WD, Guillem JG, Paty PB, Temple LK, Shia J, Weiser MR. Carcinoid of the rectum risk stratification (CaRRs): a strategy for preoperative outcome assessment. *Ann Surg Oncol* 2007; **14**: 1735-1743 [PMID: [17294074](#) DOI: [10.1245/s10434-006-9311-6](#)]
  - 39 **Ramage JK**, De Herder WW, Delle Fave G, Ferolla P, Ferone D, Ito T, Ruszniewski P, Sundin A, Weber W, Zheng-Pei Z, Taal B, Pascher A; Vienna Consensus Conference participants. ENETS Consensus Guidelines Update for Colorectal Neuroendocrine Neoplasms. *Neuroendocrinology* 2016; **103**: 139-143 [PMID: [26730835](#) DOI: [10.1159/000443166](#)]
  - 40 **Keung EZ**, Gershenwald JE. The eighth edition American Joint Committee on Cancer (AJCC) melanoma staging system: implications for melanoma treatment and care. *Expert Rev Anticancer Ther* 2018; **18**: 775-784 [PMID: [29923435](#) DOI: [10.1080/14737140.2018.1489246](#)]
  - 41 **Son HJ**, Sohn DK, Hong CW, Han KS, Kim BC, Park JW, Choi HS, Chang HJ, Oh JH. Factors associated with complete local excision of small rectal carcinoid tumor. *Int J Colorectal Dis* 2013; **28**: 57-61 [PMID: [22821140](#) DOI: [10.1007/s00384-012-1538-z](#)]
  - 42 **Kim JS**, Kim YJ, Chung JW, Kim JH, Kim KO, Kwon KA, Park DK, An JS. Usefulness of endoscopic resection using the band ligation method for rectal neuroendocrine tumors. *Intest Res* 2016; **14**: 164-171 [PMID: [27175117](#) DOI: [10.5217/ir.2016.14.2.164](#)]
  - 43 **Binmoeller KF**. Underwater EMR without submucosal injection: Is less more? *Gastrointest Endosc* 2019; **89**: 1117-1119 [PMID: [31104744](#) DOI: [10.1016/j.gie.2019.02.011](#)]
  - 44 **Park SB**, Kim HW, Kang DH, Choi CW, Kim SJ, Nam HS. Advantage of endoscopic mucosal resection with a cap for rectal neuroendocrine tumors. *World J Gastroenterol* 2015; **21**: 9387-9393 [PMID: [26309365](#) DOI: [10.3748/wjg.v21.i31.9387](#)]
  - 45 **Chen R**, Liu X, Sun S, Wang S, Ge N, Wang G, Guo J. Comparison of Endoscopic Mucosal Resection With Circumferential Incision and Endoscopic Submucosal Dissection for Rectal Carcinoid Tumor. *Surg Laparosc Endosc Percutan Tech* 2016; **26**: e56-e61 [PMID: [27213787](#) DOI: [10.1097/SLE.0000000000000266](#)]
  - 46 **Bang BW**, Park JS, Kim HK, Shin YW, Kwon KS, Kim JM. Endoscopic Resection for Small Rectal Neuroendocrine Tumors: Comparison of Endoscopic Submucosal Resection with Band Ligation and Endoscopic Submucosal Dissection. *Gastroenterol Res Pract* 2016; **2016**: 6198927 [PMID: [27525004](#) DOI: [10.1155/2016/6198927](#)]
  - 47 **Lee HJ**, Kim SB, Shin CM, Seo AY, Lee DH, Kim N, Park YS, Yoon H. A comparison of endoscopic treatments in rectal carcinoid tumors. *Surg Endosc* 2016; **30**: 3491-3498 [PMID: [26514133](#) DOI: [10.1007/s00464-015-4637-4](#)]
  - 48 **Zheng JC**, Zheng K, Zhao S, Wang ZN, Xu HM, Jiang CG. Efficacy and safety of modified endoscopic mucosal resection for rectal neuroendocrine tumors: a meta-analysis. *Z Gastroenterol* 2020; **58**: 137-145 [PMID: [32050284](#) DOI: [10.1055/a-1062-8897](#)]
  - 49 **Kim J**, Kim JH, Lee JY, Chun J, Im JP, Kim JS. Clinical outcomes of endoscopic mucosal resection for rectal neuroendocrine tumor. *BMC Gastroenterol* 2018; **18**: 77 [PMID: [29866049](#) DOI: [10.1186/s12876-018-0806-y](#)]
  - 50 **Boškoski I**, Volkanovska A, Tringali A, Bove V, Familiari P, Perri V, Costamagna G. Endoscopic resection for gastrointestinal neuroendocrine tumors. *Expert Rev Gastroenterol Hepatol* 2013; **7**: 559-569 [PMID: [23985005](#) DOI: [10.1586/17474124.2013.816117](#)]
  - 51 **Ono H**, Yao K, Fujishiro M, Oda I, Nimura S, Yahagi N, Iishi H, Oka M, Ajioka Y, Ichinose M, Matsui T. Guidelines for endoscopic submucosal dissection and endoscopic mucosal resection for early gastric cancer. *Dig Endosc* 2016; **28**: 3-15 [PMID: [26234303](#) DOI: [10.1111/den.12518](#)]
  - 52 **Zhou X**, Xie H, Xie L, Li J, Cao W, Fu W. Endoscopic resection therapies for rectal neuroendocrine tumors: a systematic review and meta-analysis. *J Gastroenterol Hepatol* 2014; **29**: 259-268 [PMID: [24118068](#) DOI: [10.1111/jgh.12395](#)]
  - 53 **Park SS**, Han KS, Kim B, Chang Kim B, Hong CW, Sohn DK, Chang HJ. Comparison of underwater endoscopic mucosal resection and endoscopic submucosal dissection of rectal neuroendocrine tumors (with videos). *Gastrointest Endosc* 2020; **91**: 1164-1171.e2 [PMID: [31904380](#) DOI: [10.1016/j.gie.2019.12.039](#)]
  - 54 **Liu S**, Chai N, Linghu E. Underwater EMR or endoscopic submucosal dissection for rectal neuroendocrine tumors: What are the advantages? *Gastrointest Endosc* 2020; **92**: 230-231 [PMID: [32586554](#) DOI: [10.1016/j.gie.2020.02.008](#)]
  - 55 **Pan J**, Zhang X, Shi Y, Pei Q. Endoscopic mucosal resection with suction vs. endoscopic submucosal dissection for small rectal neuroendocrine tumors: a meta-analysis. *Scand J Gastroenterol* 2018; **53**: 1139-1145 [PMID: [30193543](#) DOI: [10.1080/00365521.2018.1498120](#)]



- 56 **Pagano N**, Ricci C, Brighi N, Ingaldi C, Pugliese F, Santini D, Campana D, Mosconi C, Ambrosini V, Casadei R. Incidental diagnosis of very small rectal neuroendocrine neoplasms: when should endoscopic submucosal dissection be performed? *Endocrine* 2019; **65**: 207-212 [PMID: 30919286 DOI: 10.1007/s12020-019-01907-y]
- 57 **Eick J**, Steinberg J, Schwertner C, Ring W, Scherübl H. [Rectal neuroendocrine tumors: endoscopic therapy]. *Chirurg* 2016; **87**: 288-291 [PMID: 26801755 DOI: 10.1007/s00104-015-0141-6]
- 58 **Gleeson FC**, Levy MJ, Dozois EJ, Larson DW, Wong Kee Song LM, Boardman LA. Endoscopically identified well-differentiated rectal carcinoid tumors: impact of tumor size on the natural history and outcomes. *Gastrointest Endosc* 2014; **80**: 144-151 [PMID: 24462168 DOI: 10.1016/j.gie.2013.11.031]
- 59 **Shigeta K**, Okabayashi K, Hasegawa H, Ishii Y, Ochiai H, Tsuruta M, Mukai M, Kameyama K, Uraoka T, Yahagi N, Kitagawa Y. Long-term outcome of patients with locally resected high- and low-risk rectal carcinoid tumors. *J Gastrointest Surg* 2014; **18**: 768-773 [PMID: 24519035 DOI: 10.1007/s11605-014-2468-6]
- 60 **Kumar AS**, Sidani SM, Kolli K, Stahl TJ, Ayscue JM, Fitzgerald JF, Smith LE. Transanal endoscopic microsurgery for rectal carcinoids: the largest reported United States experience. *Colorectal Dis* 2012; **14**: 562-566 [PMID: 21831099 DOI: 10.1111/j.1463-1318.2011.02726.x]
- 61 **Yan FH**, Lou Z, Hu SJ, Xu XD, Wang H, Wang HT, Meng RG, Fu CG, Zhang W, He J, Yu ED. Endoscopic submucosal dissection versus transanal local excision for rectal carcinoid: a comparative study. *World J Surg Oncol* 2016; **14**: 162 [PMID: 27324379 DOI: 10.1186/s12957-016-0923-4]
- 62 **Chen T**, Yao LQ, Xu MD, Zhang YQ, Chen WF, Shi Q, Cai SL, Chen YY, Xie YH, Ji Y, Chen SY, Zhou PH, Zhong YS. Efficacy and Safety of Endoscopic Submucosal Dissection for Colorectal Carcinoids. *Clin Gastroenterol Hepatol* 2016; **14**: 575-581 [PMID: 26256463 DOI: 10.1016/j.cgh.2015.07.048]
- 63 **Ortenzi M**, Ghiselli R, Cappelletti Trombettoni MM, Cardinali L, Guerrieri M. Transanal endoscopic microsurgery as optimal option in treatment of rare rectal lesions: A single centre experience. *World J Gastrointest Endosc* 2016; **8**: 623-627 [PMID: 27668073 DOI: 10.4253/wjge.v8.i17.623]
- 64 **Mashimo Y**, Matsuda T, Uraoka T, Saito Y, Sano Y, Fu K, Kozu T, Ono A, Fujii T, Saito D. Endoscopic submucosal resection with a ligation device is an effective and safe treatment for carcinoid tumors in the lower rectum. *J Gastroenterol Hepatol* 2008; **23**: 218-221 [PMID: 18289355 DOI: 10.1111/j.1440-1746.2008.05313.x]
- 65 **Ramage JK**, Valle JW, Nieveen van Dijkum EJM, Sundin A, Pascher A, Couvelard A, Kloeppel G; the ENETS 2016 Munich Advisory Board Participants; ENETS 2016 Munich Advisory Board Participants. Colorectal Neuroendocrine Neoplasms: Areas of Unmet Need. *Neuroendocrinology* 2019; **108**: 45-53 [PMID: 30219817 DOI: 10.1159/000493767]
- 66 **Takatsu Y**, Fukunaga Y, Nagasaki T, Akiyoshi T, Konishi T, Fujimoto Y, Nagayama S, Ueno M. Short- and Long-term Outcomes of Laparoscopic Total Mesenteric Excision for Neuroendocrine Tumors of the Rectum. *Dis Colon Rectum* 2017; **60**: 284-289 [PMID: 28177990 DOI: 10.1097/DCR.0000000000000745]
- 67 **Rinke A**, Wittenberg M, Schade-Brittinger C, Aminossadati B, Ronicke E, Gress TM, Müller HH, Arnold R; PROMID Study Group. Placebo-Controlled, Double-Blind, Prospective, Randomized Study on the Effect of Octreotide LAR in the Control of Tumor Growth in Patients with Metastatic Neuroendocrine Midgut Tumors (PROMID): Results of Long-Term Survival. *Neuroendocrinology* 2017; **104**: 26-32 [PMID: 26731483 DOI: 10.1159/000443612]
- 68 **Caplin ME**, Pavel M, Ćwikła JB, Phan AT, Raderer M, Sedláčková E, Cadiot G, Wolin EM, Capdevila J, Wall L, Rindi G, Langley A, Martinez S, Blumberg J, Ruszniewski P; CLARINET Investigators. Lanreotide in metastatic enteropancreatic neuroendocrine tumors. *N Engl J Med* 2014; **371**: 224-233 [PMID: 25014687 DOI: 10.1056/NEJMoa1316158]
- 69 **Massironi S**, Conte D, Rossi RE. Somatostatin analogues in functioning gastroenteropancreatic neuroendocrine tumours: literature review, clinical recommendations and schedules. *Scand J Gastroenterol* 2016; **51**: 513-523 [PMID: 26605828 DOI: 10.3109/00365521.2015.1115117]
- 70 **Oberg K**. Interferon in the management of neuroendocrine GEP-tumors: a review. *Digestion* 2000; **62** Suppl 1: 92-97 [PMID: 10940694 DOI: 10.1159/000051862]
- 71 **Yao JC**, Guthrie KA, Moran C, Strosberg JR, Kulke MH, Chan JA, LoConte N, McWilliams RR, Wolin EM, Mattar B, McDonough S, Chen H, Blanke CD, Hochster HS. Phase III Prospective Randomized Comparison Trial of Depot Octreotide Plus Interferon Alfa-2b Versus Depot Octreotide Plus Bevacizumab in Patients With Advanced Carcinoid Tumors: SWOG S0518. *J Clin Oncol* 2017; **35**: 1695-1703 [PMID: 28384065 DOI: 10.1200/JCO.2016.70.4072]
- 72 **Yao JC**, Fazio N, Singh S, Buzzoni R, Carnaghi C, Wolin E, Tomasek J, Raderer M, Lahner H, Voi M, Pacaud LB, Rouyre N, Sachs C, Valle JW, Fave GD, Van Cutsem E, Tesselaar M, Shimada Y, Oh DY, Strosberg J, Kulke MH, Pavel ME; RAD001 in Advanced Neuroendocrine Tumours, Fourth Trial (RADIANT-4) Study Group. Everolimus for the treatment of advanced, non-functional neuroendocrine tumours of the lung or gastrointestinal tract (RADIANT-4): a randomised, placebo-controlled, phase 3 study. *Lancet* 2016; **387**: 968-977 [PMID: 26703889 DOI: 10.1016/S0140-6736(15)00817-X]
- 73 **Raymond E**, Dahan L, Raoul JL, Bang YJ, Borbath I, Lombard-Bohas C, Valle J, Metrakos P, Smith D, Vinik A, Chen JS, Hörsch D, Hammel P, Wiedenmann B, Van Cutsem E, Patyna S, Lu DR, Blankemeister C, Chao R, Ruszniewski P. Sunitinib malate for the treatment of pancreatic neuroendocrine tumors. *N Engl J Med* 2011; **364**: 501-513 [PMID: 21306237 DOI: 10.1056/NEJMoa1003825]
- 74 **Thang SP**, Lung MS, Kong G, Hofman MS, Callahan J, Michael M, Hicks RJ. Peptide receptor radionuclide therapy (PRRT) in European Neuroendocrine Tumour Society (ENETS) grade 3 (G3) neuroendocrine neoplasia (NEN) - a single-institution retrospective analysis. *Eur J Nucl Med Mol Imaging* 2018; **45**: 262-277 [PMID: 28894897 DOI: 10.1007/s00259-017-3821-2]
- 75 **Nicolini S**, Severi S, Ianniello A, Sansovini M, Ambrosetti A, Bongiovanni A, Scarpi E, Di Mauro F, Rossi A, Matteucci F, Paganelli G. Investigation of receptor radionuclide therapy with <sup>177</sup>Lu-DOTATATE in patients with GEP-NEN and a high Ki-67 proliferation index. *Eur J Nucl Med Mol Imaging* 2018; **45**: 923-930 [PMID: 29387927 DOI: 10.1007/s00259-017-3925-8]
- 76 **Suresh PK**, Sahu KK, Pai RR, Sridevi HB, Ballal K, Khandelia B, Minal J, Annappa R. The Prognostic Significance of Neuroendocrine Differentiation in Colorectal Carcinomas: Our Experience. *J Clin Diagn Res* 2015; **9**: EC01-EC04 [PMID: 26816894 DOI: 10.7860/JCDR/2015/12800.6854]



- 77 **Pavel M**, Öberg K, Falconi M, Krenning EP, Sundin A, Perren A, Berruti A; ESMO Guidelines Committee. Gastroenteropancreatic neuroendocrine neoplasms: ESMO Clinical Practice Guidelines for diagnosis, treatment and follow-up. *Ann Oncol* 2020; **31**: 844-860 [PMID: [32272208](#) DOI: [10.1016/j.annonc.2020.03.304](#)]
- 78 **Bongiovanni A**, Riva N, Ricci M, Liverani C, La Manna F, De Vita A, Foca F, Mercatali L, Severi S, Amadori D, Ibrahim T. First-line chemotherapy in patients with metastatic gastroenteropancreatic neuroendocrine carcinoma. *Onco Targets Ther* 2015; **8**: 3613-3619 [PMID: [26664145](#) DOI: [10.2147/OTT.S91971](#)]
- 79 **Turner NC**, Strauss SJ, Sarker D, Gillmore R, Kirkwood A, Hackshaw A, Papadopoulou A, Bell J, Kayani I, Toumpanakis C, Grillo F, Mayer A, Hochhauser D, Begent RH, Caplin ME, Meyer T. Chemotherapy with 5-fluorouracil, cisplatin and streptozocin for neuroendocrine tumours. *Br J Cancer* 2010; **102**: 1106-1112 [PMID: [20234360](#) DOI: [10.1038/sj.bjc.6605618](#)]
- 80 **Walter T**, Bruneton D, Cassier PA, Hervieu V, Pilleul F, Scoazec JY, Chayvialle JA, Lombard-Bohas C. Evaluation of the combination 5-fluorouracil, dacarbazine, and epirubicin in patients with advanced well-differentiated neuroendocrine tumors. *Clin Colorectal Cancer* 2010; **9**: 248-254 [PMID: [20920998](#) DOI: [10.3816/CCC.2010.n.037](#)]
- 81 **Modrek AS**, Hsu HC, Leichman CG, Du KL. Radiation therapy improves survival in rectal small cell cancer - Analysis of Surveillance Epidemiology and End Results (SEER) data. *Radiat Oncol* 2015; **10**: 101 [PMID: [25902707](#) DOI: [10.1186/s13014-015-0411-y](#)]
- 82 **Brieau B**, Lepère C, Walter T, Lecomte T, Guimbaud R, Manfredi S, Tougeron D, Desseigne F, Lourenco N, Afchain P, El Hajbi F, Terris B, Rougier P, Coriat R. Radiochemotherapy Versus Surgery in Nonmetastatic Anorectal Neuroendocrine Carcinoma: A Multicenter Study by the Association des Gastro-Entérologues Oncologues. *Medicine (Baltimore)* 2015; **94**: e1864 [PMID: [26496341](#) DOI: [10.1097/MD.0000000000001864](#)]
- 83 **Basuroy R**, Haji A, Ramage JK, Quaglia A, Srirajaskanthan R. Review article: the investigation and management of rectal neuroendocrine tumours. *Aliment Pharmacol Ther* 2016; **44**: 332-345 [PMID: [27302838](#) DOI: [10.1111/apt.13697](#)]
- 84 **Knigge U**, Capdevila J, Bartsch DK, Baudin E, Falkerby J, Kianmanesh R, Kos-Kudla B, Niederle B, Nieveen van Dijkum E, O'Toole D, Pascher A, Reed N, Sundin A, Vullierme MP; Antibes Consensus Conference Participants; Antibes Consensus Conference participants. ENETS Consensus Recommendations for the Standards of Care in Neuroendocrine Neoplasms: Follow-Up and Documentation. *Neuroendocrinology* 2017; **105**: 310-319 [PMID: [28222443](#) DOI: [10.1159/000458155](#)]



Published by **Baishideng Publishing Group Inc**  
7041 Koll Center Parkway, Suite 160, Pleasanton, CA 94566, USA

**Telephone:** +1-925-3991568

**E-mail:** [bpgoffice@wjgnet.com](mailto:bpgoffice@wjgnet.com)

**Help Desk:** <https://www.f6publishing.com/helpdesk>

<https://www.wjgnet.com>

