

World Journal of *Gastroenterology*

World J Gastroenterol 2022 April 14; 28(14): 1384-1502



Contents

Weekly Volume 28 Number 14 April 14, 2022

EDITORIAL

- 1384 Hepatocellular adenoma: Where are we now?
Wang X, Zhang X

OPINION REVIEW

- 1394 Endoluminal vacuum-assisted therapy to treat rectal anastomotic leakage: A critical analysis
Vignali A, De Nardi P

REVIEW

- 1405 Viral hepatitis: Past, present, and future
Odenwald MA, Paul S
- 1430 Osteosarcopenia in autoimmune cholestatic liver diseases: Causes, management, and challenges
Pugliese N, Arcari I, Aghemo A, Lania AG, Lleo A, Mazzotti G

ORIGINAL ARTICLE

Basic Study

- 1444 Syngeneic implantation of mouse hepatic progenitor cell-derived three-dimensional liver tissue with dense collagen fibrils
Tamai M, Adachi E, Kawase M, Tagawa YI

Retrospective Cohort Study

- 1455 Clinical classification of symptomatic heterotopic pancreas of the stomach and duodenum: A case series and systematic literature review
LeCompte MT, Mason B, Robbins KJ, Yano M, Chatterjee D, Fields RC, Strasberg SM, Hawkins WG

Retrospective Study

- 1479 Radiomics signature: A potential biomarker for β -arrestin1 phosphorylation prediction in hepatocellular carcinoma
Che F, Xu Q, Li Q, Huang ZX, Yang CW, Wang LY, Wei Y, Shi YJ, Song B

LETTER TO THE EDITOR

- 1494 Comment on review article: Chronic hepatitis C virus infection cascade of care in pediatric patients
Bouare N, Keita M, Delwaide J
- 1499 Comments on "Effect of type 2 diabetes mellitus in the prognosis of acute-on-chronic liver failure patients in China"
Wang W, Pan CC, Zhao WY, Sheng JY, Wu QQ, Chen SS

ABOUT COVER

Editorial Board Member of *World Journal of Gastroenterology*, Sung-Chul Lim, MD, PhD, Professor, Head, Department of Pathology, Chosun University Hospital, 365 Pilmun-daero, Dong-gu, Gwangju 61453, South Korea. sclim@chosun.ac.kr

AIMS AND SCOPE

The primary aim of *World Journal of Gastroenterology* (WJG, *World J Gastroenterol*) is to provide scholars and readers from various fields of gastroenterology and hepatology with a platform to publish high-quality basic and clinical research articles and communicate their research findings online. WJG mainly publishes articles reporting research results and findings obtained in the field of gastroenterology and hepatology and covering a wide range of topics including gastroenterology, hepatology, gastrointestinal endoscopy, gastrointestinal surgery, gastrointestinal oncology, and pediatric gastroenterology.

INDEXING/ABSTRACTING

The WJG is now indexed in Current Contents®/Clinical Medicine, Science Citation Index Expanded (also known as SciSearch®), Journal Citation Reports®, Index Medicus, MEDLINE, PubMed, PubMed Central, and Scopus. The 2021 edition of Journal Citation Report® cites the 2020 impact factor (IF) for WJG as 5.742; Journal Citation Indicator: 0.79; IF without journal self cites: 5.590; 5-year IF: 5.044; Ranking: 28 among 92 journals in gastroenterology and hepatology; and Quartile category: Q2. The WJG's CiteScore for 2020 is 6.9 and Scopus CiteScore rank 2020: Gastroenterology is 19/136.

RESPONSIBLE EDITORS FOR THIS ISSUE

Production Editor: Hua-Ge Yin, Production Department Director: Xu Guo, Editorial Office Director: Ze-Mao Gong.

NAME OF JOURNAL

World Journal of Gastroenterology

ISSN

ISSN 1007-9327 (print) ISSN 2219-2840 (online)

LAUNCH DATE

October 1, 1995

FREQUENCY

Weekly

EDITORS-IN-CHIEF

Andrzej S Tarnawski

EDITORIAL BOARD MEMBERS

<http://www.wjgnet.com/1007-9327/editorialboard.htm>

PUBLICATION DATE

April 14, 2022

COPYRIGHT

© 2022 Baishideng Publishing Group Inc

INSTRUCTIONS TO AUTHORS

<https://www.wjgnet.com/bpg/gerinfo/204>

GUIDELINES FOR ETHICS DOCUMENTS

<https://www.wjgnet.com/bpg/GerInfo/287>

GUIDELINES FOR NON-NATIVE SPEAKERS OF ENGLISH

<https://www.wjgnet.com/bpg/gerinfo/240>

PUBLICATION ETHICS

<https://www.wjgnet.com/bpg/GerInfo/288>

PUBLICATION MISCONDUCT

<https://www.wjgnet.com/bpg/gerinfo/208>

ARTICLE PROCESSING CHARGE

<https://www.wjgnet.com/bpg/gerinfo/242>

STEPS FOR SUBMITTING MANUSCRIPTS

<https://www.wjgnet.com/bpg/GerInfo/239>

ONLINE SUBMISSION

<https://www.f6publishing.com>



Basic Study

Syngeneic implantation of mouse hepatic progenitor cell-derived three-dimensional liver tissue with dense collagen fibrils

Miho Tamai, Eijiro Adachi, Masaya Kawase, Yoh-ichi Tagawa

Specialty type: Gastroenterology and hepatology

Provenance and peer review:

Invited article; Externally peer reviewed.

Peer-review model: Single blind

Peer-review report's scientific quality classification

Grade A (Excellent): 0
Grade B (Very good): B
Grade C (Good): C
Grade D (Fair): 0
Grade E (Poor): 0

P-Reviewer: Gao W

Received: February 27, 2021

Peer-review started: February 27, 2021

First decision: March 28, 2021

Revised: April 10, 2021

Accepted: September 2, 2021

Article in press: September 2, 2021

Published online: April 14, 2022



Miho Tamai, Yoh-ichi Tagawa, School of Life Science and Technology, Tokyo Institute of Technology, Yokohama-shi 226-8501, Japan

Miho Tamai, Faculty of Dental Medicine, Hokkaido University, Sapporo 060-8586, Japan

Eijiro Adachi, Department of Molecular Morphology, Kitasato University, Yokohama-shi 319-3526, Japan

Eijiro Adachi, Long-Term Care Health Facility Yasuragi, Ibaraki Zip or Postal Code, Japan

Masaya Kawase, Nagahama Institute of Bio-Science and Technology, Shiga 526-0829, Japan

Corresponding author: Yoh-ichi Tagawa, DSc, Associate Professor, School of Life Science and Technology, Tokyo Institute of Technology, 4259 B51, Nagatsuta-cho, Midori-ku, Yokohama-shi 226-8501, Japan. ytagawa@bio.titech.ac.jp

Abstract

BACKGROUND

Liver transplantation is a therapy for irreversible liver failure; however, at present, donor organs are in short supply. Cell transplantation therapy for liver failure is still at the developmental stage and is critically limited by a shortage of human primary hepatocytes.

AIM

To investigate the possibility that hepatic progenitor cells (HPCs) prepared from the portal branch-ligated hepatic lobe may be used in regenerative medicine, we attempted to enable the implantation of extracellular matrices containing organoids consisting of HPC-derived hepatocytes and non-parenchymal cells.

METHODS

In vitro liver organoid tissue has been generated by accumulating collagen fibrils, fibroblasts, and HPCs on a mesh of polylactic acid fabric using a bioreactor; this was subsequently implanted into syngeneic wild-type mice.

RESULTS

The *in vitro* liver organoid tissues generated transplantable tissues in the condensed collagen fibril matrix and were obtained from the mouse through partial hepatectomy.

CONCLUSION

Liver organoid tissue was produced from expanded HPCs using an originally designed bioreactor system. This tissue was comparable to liver lobules, and with fibroblasts embedded in the network collagen fibrils of this artificial tissue, it is useful for reconstructing the hepatic interstitial structure.

Key Words: Liver; Three-dimensional tissue culture; Hepatic progenitor cells; Angiogenesis; Biomimetic extracellular matrix

©The Author(s) 2022. Published by Baishideng Publishing Group Inc. All rights reserved.

Core Tip: Liver transplantation is a therapeutic procedure used to recover liver function in patients with irreversible liver failure; however, there is presently a shortage of transplant organs available. Hepatic stem and progenitor cells are expected to allow regenerative medicine to produce a cell source as an alternative to whole organs. The portal branch-ligated, hepatic lobe-derived HPCs multiplied in a bioreactor chamber to form liver organoid tissues comparable to liver lobules. These organoid tissues were implanted into syngeneic mice. This portal branch-ligated-derived HPC line has the potential to proliferate, mature, and form implantable hepatic tissue.

Citation: Tamai M, Adachi E, Kawase M, Tagawa YI. Syngeneic implantation of mouse hepatic progenitor cell-derived three-dimensional liver tissue with dense collagen fibrils. *World J Gastroenterol* 2022; 28(14): 1444-1454

URL: <https://www.wjgnet.com/1007-9327/full/v28/i14/1444.htm>

DOI: <https://dx.doi.org/10.3748/wjg.v28.i14.1444>

INTRODUCTION

Liver transplantation is a therapy for irreversible liver failure; however, donor organs are currently in short supply[1,2]. Cell transplantation therapy for liver failure is still at the developmental stage and has a critical problem in terms of a shortage of human primary hepatocytes[3]. Human embryonic stem/induced pluripotent stem (ES/iPS) cell-derived hepatocytes are thought to be an alternative to human primary hepatocytes, but ES/iPS cells are difficult to differentiate into mature hepatocytes in culture[4,5]. ES/iPS cell-derived immature hepatocytes successfully developed into mature liver tissue in animals after implantation[6,7]. However, this process requires a great deal of time, effort, and expense in order to obtain a sufficient number of ES/iPS cell-derived hepatocytes in culture to achieve the amount needed for them to continue to proliferate. There have been several reports of rat HPCs, such as small hepatocytes[8] and Lgr5+ rat and mouse liver stem cells[9,10], becoming established in culture. These hepatic stem/progenitor cells have the ability to proliferate and differentiate into hepatocytes and cholangiocytes[11,12]. Recently, we also succeeded in establishing HPC lines prepared from the portal branch-ligated hepatic lobe in mice (PBL-HPCs)[13]. These cells could differentiate into mature hepatocytes in the presence of oncostatin M, or to cholangiocytes in EHS gel.

Besides dissociated hepatocyte implantation, regenerative medicine is also expected to enable the implantation of extracellular matrices containing aggregate, or organoids consisting of hepatocytes and non-parenchymal cells[14-16]. *In vitro* liver organoid tissue has previously been generated by accumulating collagen fibrils, human fibroblast cell line (HFO cell), and human hepatocarcinoma cell line (Hep G2) on a mesh of polylactic acid (PLA) fabric using a bioreactor[14]. Also, instead of HFO and Hep G2, mouse embryonic fibroblasts and primary hepatocytes were used for this *in vitro* liver organoid tissue. These *in vitro* liver organoid tissues generated transplantable liver organoid tissues in the right portal vein branch-ligated *nu/nu* mouse with a condensed collagen fibril matrix[14]. The fibroblasts are embedded in the network collagen fibrils of this artificial tissue, and it is therefore useful for reconstructing the hepatic interstitial structure.

In this study, the PBL-HPCs were expanded and formed liver organoid tissue, which was comparable to liver lobules using an originally designed bioreactor system, and was also implanted into its syngeneic wild-type mouse.

MATERIALS AND METHODS

Animals

Pregnant BALB/cA mice at 13.5 d post-coitus (CLEA Japan, Tokyo, Japan) were used for embryonic fibroblast isolation. Six-week-old female and male BALB/cA Jcl and BALB/cA Jcl-nu/nu 3 mice (CLEA Japan, Tokyo, Japan) were used as transplant recipients. The animal protocol was approved by the Animal Experimentation Committee of the Tokyo Institute of Technology.

Cells and cultures

The PBL-HPCs were established in a previous study with portal vein ligated methods[13]. The cells were cultured in Williams' E medium (GIBCO Laboratories, Grand Island, NY, United States) supplemented with 5% fetal bovine serum, 10 mmol/L nicotinamide (Sigma-Aldrich, St. Louis, MO, United States), 0.1 µmol/L dexamethasone (Sigma-Aldrich), 1×Insulin-Transferrin-Sodium Selenite Supplement (Roche Diagnostics, Mannheim, Germany), and 20 ng/mL Recombinant Mouse Epidermal Growth Factor (R&D Systems, Minneapolis, MN, United States) in 5% CO₂ at 37°C. These cells were passaged by treatment with 0.05% trypsin (Invitrogen) and 20 µmol/L ethylenediaminetetraacetic acid (EDTA; NACALAI TESQUE, Kyoto, Japan).

Preparation of murine embryonic fibroblasts

A pregnant female BALB/c mouse at 13.5 dpc (days post-coitus) was sacrificed by cervical dislocation, and embryos were removed. The limbs of the embryos were minced and treated with 0.25% trypsin (Invitrogen, Tokyo, Japan) + 1 mmol/L EDTA (about 2 mL per embryo) and incubated with gentle stirring at 37 °C for 10-15 min. The cells were subsequently cultured in DMEM containing 10% (v/v) FBS.

Generation of three-dimensional liver tissue culture model

As shown in Figure 1, the three-dimensional (3-D) liver tissue culture model was generated by accumulating collagen fibrils, primary murine embryonic fibroblasts, and PBL-HPCs using a closed-loop system with a bioreactor chamber (diameter 17 mm; thickness 20 mm) developed by our group as previously reported[14,17]. Briefly, primary embryonic fibroblasts (1.0×10^5 cells/mL) in 10% FBS and 7.5 mg/mL type I collagen prepared from calfskin (Koken Collagen, Tokyo, Japan) in Williams' E medium flowed through the closed-loop system at a predetermined flow rate (1-5 mL/min) for 6 h. Subsequently, the same medium was circulated through the closed-loop system, and PBL-HPCs (5.0×10^6 cells/mL) were injected using a syringe into the system upstream of the bioreactor chamber for 2 h. Finally, a suspension of fibroblasts (1.0×10^5 cells/mL) was circulated for 6 h.

Morphological analyses

The 3-D liver tissue culture models were fixed with Zamboni's fixative for light microscopy. The samples were dehydrated with an ethanol series and embedded in paraffin. The sections were stained with hematoxylin and eosin or AZAN and examined with a light microscope.

Hepatic function assay in liver tissue culture model

Urea production in the medium was quantified using a urea assay kit (Bioassay Systems, Hayward, CA, United States) 24 h after the addition of 2 mmol/L NH₄Cl. Albumin production was quantified in the medium using an albumin EIA (Albuwell M) mouse kit (Exocell, Philadelphia, PA, United States).

The metabolites of testosterone in the medium were quantified by HPLC analysis[18]. The 3-D liver tissue culture models were incubated with fresh medium containing 0.25 mmol/L testosterone and the medium was collected at 24 h. After sample treatment, HPLC analysis was performed using LC-10ADVP (Shimadzu, Kyoto, Japan) with Cadenza columns (Cadenza CD-C18) (Imtakt, Kyoto, Japan) and SPD-10A VP (Shimadzu, Kyoto, Japan).

Transplantation of liver tissue culture model

Under isoflurane anesthesia, mice were subjected to an upper-abdominal incision, followed by exposure and ligation of the left portal vein branch and subsequent hepatectomy of the left and middle lobes (70%). The 3-D liver tissue culture model was transplanted into the subcutaneous layer of a mouse. Two weeks later, the 3-D liver tissue culture model was removed for histological analysis of the vascular network.

Statistical analysis

Results of multiple experiments were reported as the mean ± SE. Statistical comparisons were made using a Tukey-Kramer method and a Welch *t*-test using the IBM SPSS Statistic 27.

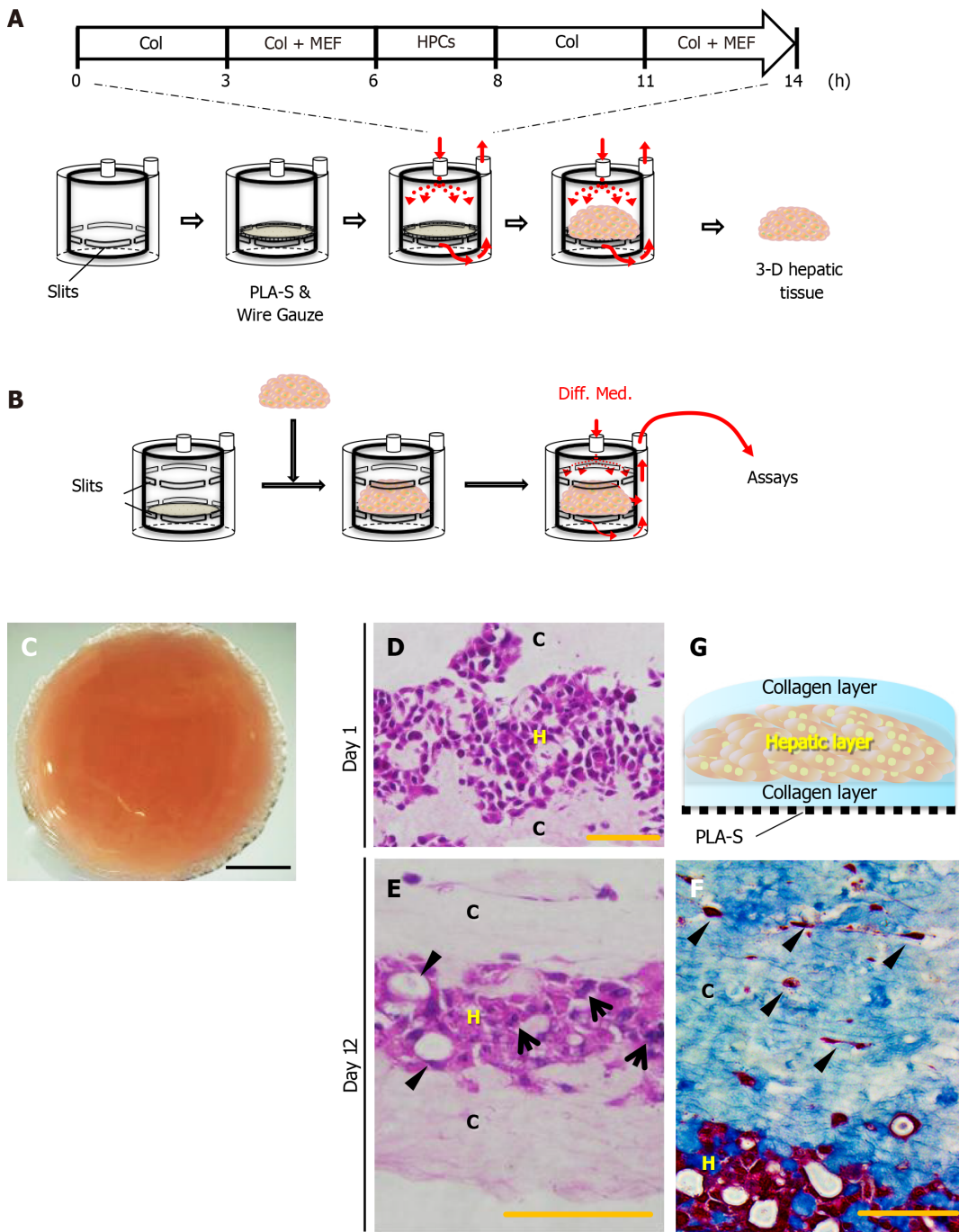


Figure 1 Reconstruction of the three-dimensional liver tissue culture model using hepatic progenitor cells. A and B: A schematic illustration showing reconstruction of the liver tissue culture model using a bioreactor; preparation steps (A), and culture steps (B); C: Micrographs of a reconstructed three-dimensional (3-D) liver tissue culture model with dense collagen fibrils; D and E: Histological analyses: hematoxylin-eosin staining of a section of the 3-D liver tissue culture model on day 1 (D) and day 12 (E). Arrows indicate binuclear populations, like hepatocytes. Arrowheads indicate a bile duct-like structure; F: Histological analyses: AZAN staining of a section of the 3-D liver tissue culture model on day 12. Arrowheads indicate fibroblasts at condensed collagen fibril matrices. Bar corresponds to (C) 5 mm, (D) 50 μ m, and (E) and (F) 100 μ m. Col: Collagen; HPCs: Portal branch-ligated-hepatic progenitor cells; PLA-S: Polylactic acid sheet; C: Collagen layer; H: Hepatic layer.

RESULTS

Preparation of 3-D hepatic progenitor cell-derived 3-D liver tissue culture model

Type I collagen solution was circulated through a sheet of PLA into a reverse radial flow-type bioreactor, followed by the suspension of 5.0×10^6 cells of mouse embryonic fibroblasts (MEFs). In the next step, the suspension of 1.0×10^7 PBL-HPCs was circulated without oncostatin M. After these steps, the type I collagen solution was circulated again followed by the suspension of 5.0×10^6 MEFs. Finally a 3-D aggregate was prepared (Figure 1A). The surface of this 3-D aggregate which included PBL-HPCs, primary fibroblasts, and type I collagen was glossy and measured 17 mm in diameter and 1.5 mm in

height. This glossy aggregate consisted of a layer of PBL-HPCs, sandwiched between two layers of collagen fibrils with MEFs, and was constructed on a sheet of PLA as shown in [Figure 1G](#). Cross-sectional profiles of the 3-D liver tissue culture models were stained with hematoxylin-eosin and AZAN as shown in [Figure 1D-F](#). The collagen layers were composed of densely packed collagen fibrils running parallel to the plane of the PLA sheet. A layer of PBL-HPCs 200-300 μm thick ([Figure 1D](#)), and two layers of collagen fibrils populated with embryonic fibroblasts, approximately 400 μm thick, were observed in the 3-D liver tissue culture model. To culture the 3-D liver tissue model, the cylinder inside the bioreactor was changed from construction to culture ([Figure 1B](#)). The 3-D liver tissue culture model was cultured using a differentiation medium containing 20 ng/mL oncostatin M in the bioreactor for 12 d. After this, PBL-HPCs differentiated into mature hepatocyte-like cells, in binuclear populations, and with a bile duct-like structure ([Figure 1E](#)). Collagen layers were maintained by the collagen fibers and fibroblasts on day 12.

Expression of liver-related genes in hepatic progenitor cell-derived 3-D liver tissue culture model

The expression of liver-specific genes was determined in the 3-D liver tissue culture model. To investigate whether the 3-D liver tissue culture models were able to show hepatic lineage differentiation (*i.e.*, to mature into hepatocytes and bile duct cells), the cells were cultured in the presence of oncostatin M. By day 12 of the culture in the hepatic lineage differentiation medium, quantitative real-time polymerase chain reaction analysis revealed that the cells expressed hepatocyte differentiation markers including: Afp (α -fetoprotein); Albumin; Tat (tyrosine aminotransferase); Tdo (tryptophan 2,3-dioxygenase); Cps1 (carbamoyl-phosphate synthetase 1); Cyp1a2 (Cytochrome P450, family 1, sub-family a2); Cyp2e1 (Cytochrome P450, family 2, sub-family e1); and Abcc2 [ATP-binding cassette, sub-family C (CFTR/MRP), member 2] ([Figure 2A-H](#)). On the other hand, the gene expression of *Bsep* (bile salt export pump) and *ABCB11* (ATP-binding cassette, sub-family B member 11) decreased in the 3-D liver tissue culture model ([Figure 2I](#)). The expression of *CK19*, a representative marker for HPCs, was confirmed in the PBL-HPCs. The gene expression of *CK19* decreased in the 3-D liver tissue culture models ([Figure 2J](#)). In addition, PBL-HPCs expressed the *CD44* gene, a progenitor cell marker, which decreased in the 3-D liver tissue culture models ([Figure 2K](#)). After that, *CD44* expression increased in the 3-D liver tissue culture models on day 12 of culture ([Figure 2K](#)).

The 3-D liver tissue culture model exhibits expression of multiple liver-specific functions

The expression of several liver-specific functions, such as the production of urea and albumin, and drug metabolism, were analyzed in the 3-D liver tissue culture models. Urea production was examined in cultured 3-D liver tissue culture models in a hepatic lineage differentiation medium containing 2 mmol/L NH_4^+ . The level of urea production in the 3-D liver tissue culture model gradually increased and was significantly higher on days 6 and 12 than in the 2-D culture ([Figure 3A](#)). The amount of albumin released from the 3-D liver tissue culture model into the medium was measured in each medium on day 1, day 6, and day 12 by enzyme-linked immunosorbent assay. As seen in [Figure 3B](#), the albumin level increased gradually from day 1 to day 12. These results suggest that the 3-D liver tissue culture model with PBL-HPCs had differentiated.

To quantify P450 activities, the hydroxylated pattern of testosterone by cultured 3-D liver tissue culture models in a hepatic lineage differentiation medium, containing 250 $\mu\text{mol/L}$ testosterone, was examined using high-performance liquid chromatography. The concentration of each hydroxylated testosterone (6 β -OHT, 7 α -OHT, 16 α -OHT, and 16 β -OHT, respectively, corresponding to oxidation by Cyp3a, Cyp2a4/5 and 2d9, Cyp2d9 and 2b, and Cyp2c29 and 2e) was quantified. The concentrations of hydroxylated testosterone, such as 6 β -OHT, 7 α -OHT, 16 α -OHT, and 16 β -OHT, in the media of the 3-D liver tissue culture models after 12 days culture were measured. As compared with the hydroxylation levels of 6 β -OHT, 7 α -OHT, and 16 α -OHT in the 2-D culture, the hydroxylation levels were significantly increased in the 3-D liver tissue models ([Figure 3C](#)).

The 3-D liver tissue was grafted in the partially hepatectomized mouse

The 3-D liver tissue culture model of PBL-HPCs was syngeneically transplanted into the subcutaneous layer of a BALB/cA mouse which had received a 70% partial hepatectomy as shown in [Figure 4A](#). The graft could be observed in the subcutaneous layer two weeks after transplantation. Microvascular networks were seen throughout this engrafted tissue. As shown in [Figure 4B and C](#), the hematoxylin-eosin staining of this specimen in the graft area showed that collagen remained rich in the graft, fibroblasts existed in the collagen area, and vessel-like tube formation was observed. To investigate whether the cells in these areas were hepatocytes, an immunohistochemical examination using staining with anti-albumin antibodies was carried out ([Figure 4D](#)). This confirmed that the PBL-HPCs were accepted as albumin-positive cells after transplantation. These results indicate that the 3-D liver tissue culture model was successfully grafted with angiogenesis in the partially hepatectomized mouse.

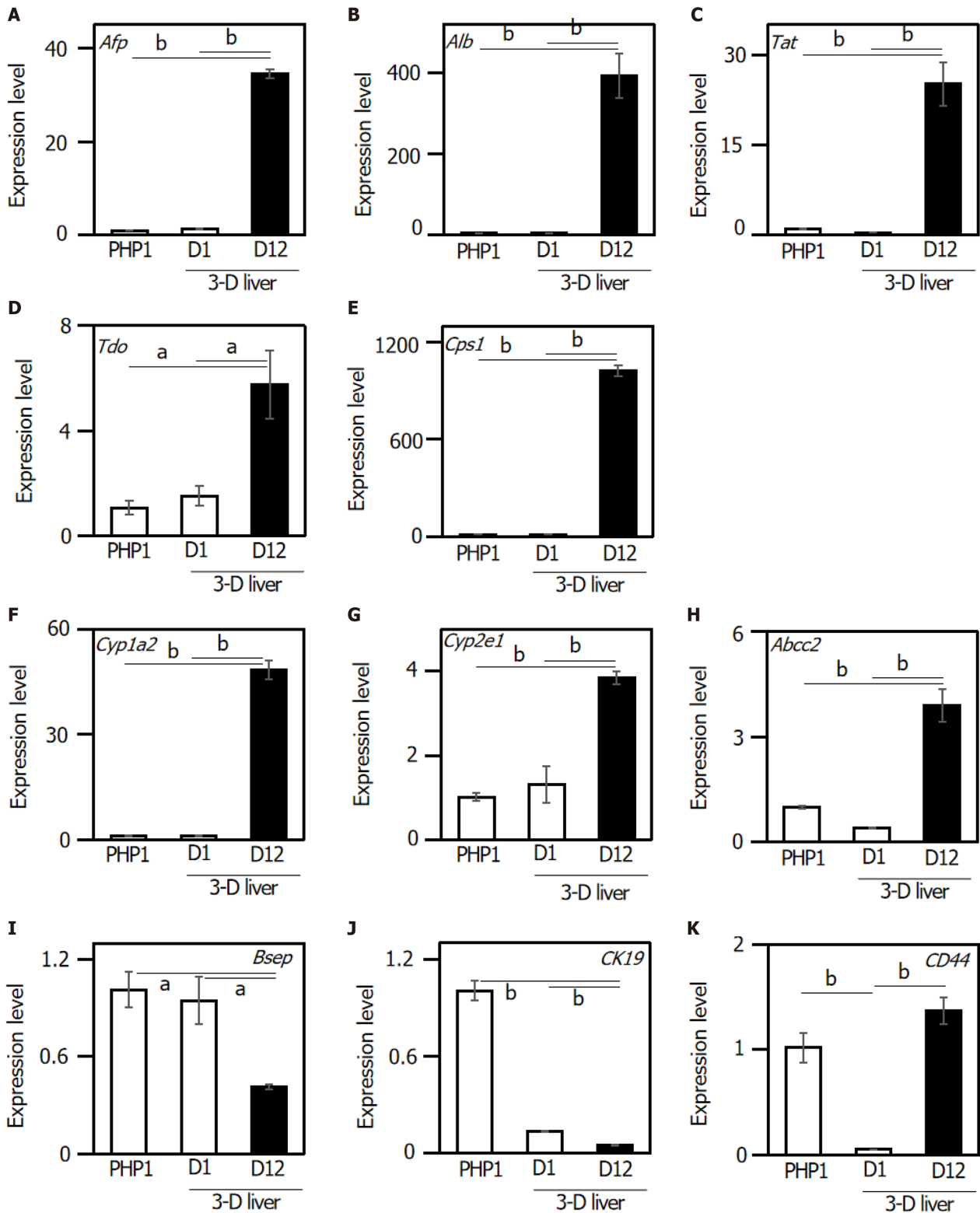


Figure 2 Relative gene expression levels in the three-dimensional liver tissue culture model cultured in a bioreactor on day 1 and day 12. Relative gene expression levels were analyzed in the three-dimensional liver tissue culture model. A: *Afp*; B: *Albumin*; C: *Tat*; D: *Tdo*; E: *Cps1*; F: *Cyp1a2*; G: *Cyp2e1*; H: *Abcc2*; I: *Bsep*; J: *CK19*; K: *CD44*. *Hprt* was used as an internal control. Statistical comparisons were made using the Tukey-Kramer method. Data are shown as means \pm SE, $n = 3$, $^aP < 0.05$ and $^bP < 0.01$. *Afp*: Alpha-fetoprotein; *Tat*: Tyrosine aminotransferase; *Tdo*: Tryptophan 2,3-dioxygenase; *Cps1*: Carbamoyl-phosphate synthetase 1; *Cyp1a2*: Cytochrome P450, family 1, sub-family a2; *Cyp2e1*: Cytochrome P450, family 2, sub-family e1; *Abcc2*: ATP-binding cassette, sub-family C (CFTR/MRP), member 2; *Bsep*: Bile salt export pump; *ABCB11*: ATP-binding cassette, sub-family B member 11; *CK19*: Cytokeratin 19; *CD44*: Hyaluronic Acid Binding Protein.

DISCUSSION

It is crucial to develop a technology that enables transplantable engineered tissues to be functionally

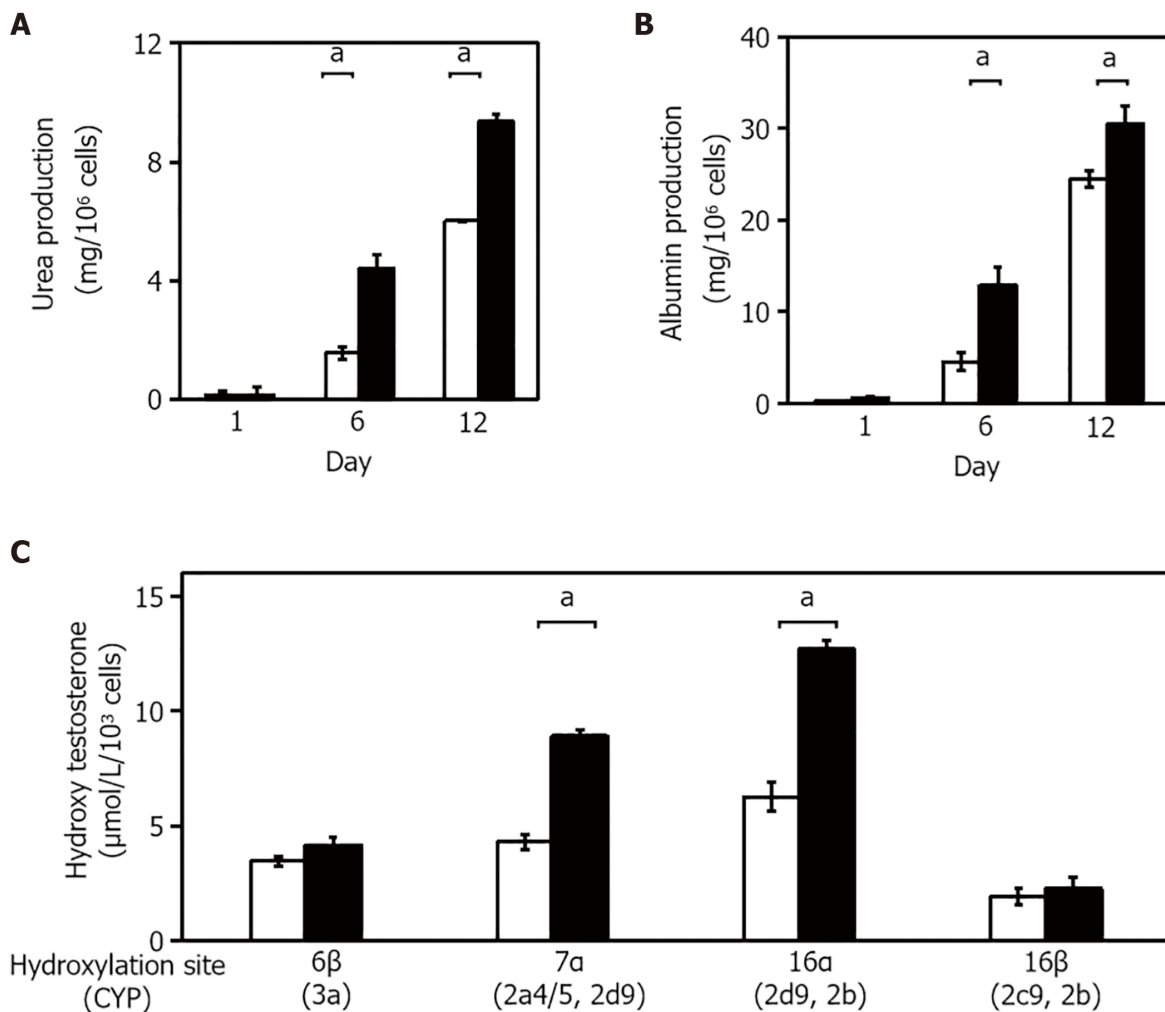


Figure 3 Validation of hepatic functions in the three-dimensional liver tissue culture model. A and B: Urea (A) and albumin (B) production levels in the culture medium in each culture condition; C: Hydroxylation activity of testosterone in the three-dimensional (3-D) liver tissue culture model. The amount of each hydroxylated testosterone in culture medium. Culture medium was changed every 2 d over the course of the measurement period. 2-D culture (open columns) and 3-D culture (closed columns) system. Statistical comparisons were made using the Welch *t*-test. Data are shown as means \pm SE, *n* = 3, **P* < 0.01.

engrafted and long-lasting, in order to maximize the therapeutic effects of this procedure[19-21]. There are reports of transplanted hepatocytes at several different extrahepatic sites such as the small intestine [22,23]. Tissue engineering has been a promising procedure for providing transplantable tissues mimicking liver *ex vivo*[24,25]. The attachment of hepatocytes to extracellular matrix scaffolds can help in their engraftment in extrahepatic sites[26,27]. It is important to provide scaffold materials for hepatocytes to enable significantly greater hepatocyte survival in heterotypic transplantation[28]. The liver is encased mainly with collagen fibrils. By fabricating graded structures specific for target tissues and organs, one can obtain suitable scaffolds for tissue regeneration[29]. Taking into account the architecture of the liver, we have generated a 3-D liver tissue culture model of HPCs with a collagen fibril matrix using a bioreactor. Furthermore, defining and validating new sources is mandatory for ensuring functional hepatic cell supply[30]. Hepatic stem/progenitor cells have many advantages compared to adult hepatocytes as they are bipotent cells, so they can differentiate into hepatocytes and cholangiocytes[20]. Moreover, they have high proliferation ability.

In this study, HPCs – PBL-HPCs – were used in an original procedure to generate a 3-D liver tissue culture model. The histological structure of this model resembled that of the liver, with respect to its capillary network and surrounding cell clusters. As PBL-HPCs have the potential to reproduce themselves, it is easy to prepare the necessary numbers of cells (1×10^7 cells order). The PBL-HPC-derived 3-D liver tissue culture model reconstructed in a bioreactor produced cells that differentiated into hepatic-like cells, binuclear populations, and bile duct-like structures (Figure 1F). These cells expressed hepatocyte differentiation markers (Figure 2) after 12 days of culture. The PBL-HPCs differentiated not only into hepatic cells but also bile duct-like cells in a reconstituted collagen fibril matrix. In the 3-D liver tissue culture model derived from PBL-HPCs, the levels of urea and albumin production were gradually enhanced and were significantly higher than those cultured in dishes on days 6 and 12 (Figure 3A and B). Cyp3a, 2a4/5, 2d9, and 2b activities were significantly increased in the 3-D liver

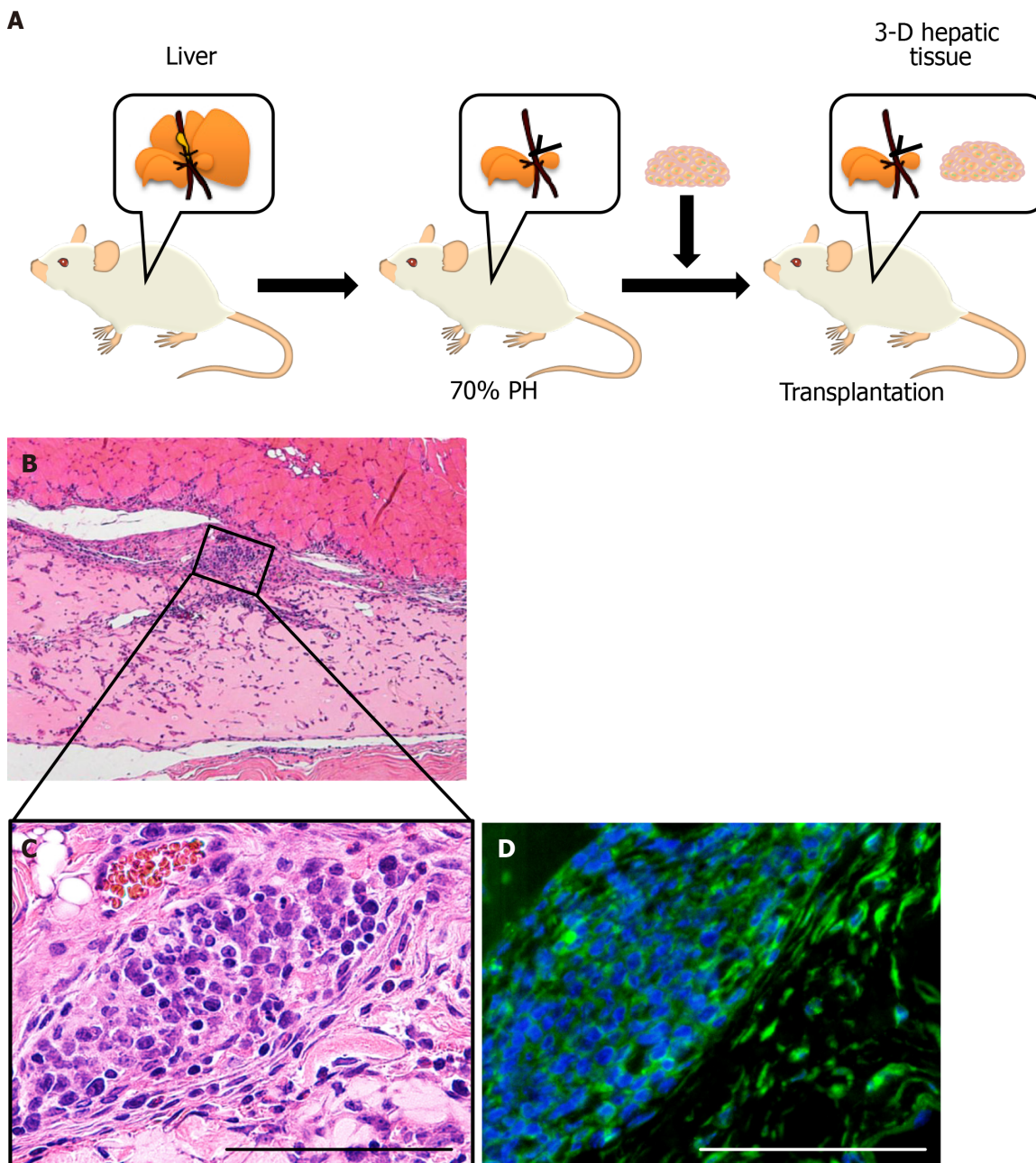


Figure 4 Transplanted three-dimensional liver tissue culture models in partially hepatectomized model mice. A: A schematic illustration showing the transplantation of the three-dimensional (3-D) liver tissue culture model; B: Histological analyses and hematoxylin-eosin staining of the section for the 3-D liver tissue culture model after transplantation; C: Higher magnification of the inscribed area in (B). The vascularization was observable at condensed collagen fibril matrices. Arrowheads indicate new blood vessels; D: Immunohistochemical analysis of the 3-D liver tissue culture model of albumin-positive hepatic cells after being transplanted using anti-albumin (green) antibodies. Bar corresponds to 100 μ m.

tissue culture models (Figure 3C). These results suggest that the PBL-HPCs differentiated to mature hepatocytes in the 3-D liver tissue culture model.

Since PBL-HPCs differentiated into cells expressing hepatic functions in a 3-D liver tissue culture model, further investigation was carried out to determine whether PBL-HPCs also maintained their acquired functions after transplantation. Following implantation of the PBL-HPC-derived 3-D liver tissue culture model into mice, the 3-D liver tissue culture model was grafted, and vessel-like tube formation was observed (Figure 4B and C).

Also, the 3-D liver tissue culture model was grafted in the healthy mouse which did not undergo partial hepatectomy, and vascularization was observed (Supplementary Figure 1A and B). On the other hand, the Matrigel-embedded PBL-HPCs were transplanted into male healthy mice or nu/nu mice, and vascularization was not observed (Supplementary Figure 1C-F). PBL-HPCs differentiated into albumin positive cells (Figure 4D). This hepatic tissue consisted of fibroblasts and HPCs which can be differentiated into only hepatocytes and bile duct cells, not immune cells. As some blood vessels were observed after implantation, lymphocytes and monocytes may have been circulating. However, we did not detect

Kupffer cells in the grafts. The 3-D liver tissue culture model was investigated for efficiency of transplantation in extrahepatic sites. These findings demonstrated that a reconstituted collagen fibril matrix can provide an extracellular microenvironment to promote the maturation of progenitor cells into hepatic cells. A local vascular network would allow nutrient and gas transport to the graft. These findings could make a significant contribution to the problem of liver graft shortage.

CONCLUSION

In conclusion, a 3-D liver tissue culture model was developed using HPCs. The advantage of our system is that it consists of proliferative HPCs. The 3-D liver tissue culture models can be generated in an originally designed bioreactor within 24 h. By mimicking the structure of the natural liver, our system was effective in constructing a functional liver tissue model.

ARTICLE HIGHLIGHTS

Research background

Liver transplantation is a therapeutic procedure to recover liver function in patients with irreversible liver failure; however, there is currently a shortage of available transplant organs, which limits the availability of this treatment.

Research motivation

Portal branch-ligated (PBL) HPCs are expected to allow regenerative medicine to produce a cell source to provide an alternate source for transplantation.

Research objectives

We aimed to develop a liver model using HPCs.

Research methods

Hepatic stem/progenitor cells have the ability to multiply *ex vivo* and differentiate into hepatocytes and cholangiocytes. We have previously established HPC lines derived from the hepatic tissues of mice after ligation of venous drainage. In this study, the PBL hepatic lobe-derived HPCs multiplied in a bioreactor chamber to form liver organoid tissues comparable to liver lobules. These organoid tissues were implanted into syngeneic wild-type mice.

Research results

In the three-dimensional (3-D) liver tissue culture model, PBL-HPCs differentiated into mature hepatocyte-like cells, in binuclear populations, and with a bile duct-like structure. Quantitative real-time polymerase chain reaction analysis revealed that the cells expressed hepatocyte differentiation markers. In the 3-D liver tissue culture model derived from PBL-HPCs, the levels of urea and albumin production and activities of Cytochrome P450 enzymes were gradually enhanced.

Research conclusions

By mimicking the structure of the natural liver, our system was effective for the construction of a functional liver tissue model.

Research perspectives

This PBL-derived HPC line has the potential to proliferate, mature, and form implantable hepatic tissue.

ACKNOWLEDGEMENTS

The authors would like to acknowledge Sakai H and Miyagawa S (Department of Surgery, Shinshu University School of Medicine) for skillful technical assistance.

FOOTNOTES

Author contributions: Tagawa YI designed the study; Tamai M conducted all experiments; Kawase M performed statistical processing; Adachi E and Tagawa YI supervised the project; Tamai M and Tagawa YI wrote the manuscript; all authors read and approved the manuscript.

Supported by Grants-in-Aid for Scientific Research (A), No. 25242040 (to Tagawa YI); Grants-in-Aid for Challenging Exploratory Research, No. 20K21520 (to Tagawa YI); Grants-in-Aid for Early Career Scientists from the Japan Society for the Promotion of Science (JSPS), No. 19K20655 (to Tamai M); Grant-in-Aid for Scientific Research on Innovative Areas from the Ministry of Education, Culture, Sports, Science and Technology of Japan (MEXT), No. 231190003 (to Tagawa YI); Japan Agency for Medical Research and Development (AMED), No. 20fk0310102 (to Tagawa YI); and Building of Consortia for the Development of Human Resources in Science and Technology, Ministry of Education, Culture, Sports, Science and Technology, Japan (to Tamai M).

Institutional animal care and use committee statement: All animal experiments conformed to the internationally accepted principles for the care and use of laboratory animals. All animal experiments were conducted in accordance with policies of the Animal Experimentation Committee of the Tokyo Institute of Technology Guide for the Care and Use of Laboratory Animals. Specific protocols used in this study were approved by the Animal Experimentation Committee of the Tokyo Institute of Technology (approved protocols are D2015009, D2012019 and 2009024-5).

Conflict-of-interest statement: The authors declare no conflict of interest relevant to this manuscript.

Data sharing statement: No additional data are available.

ARRIVE guidelines statement: The authors have read the ARRIVE Guidelines, and the manuscript was prepared and revised according to the ARRIVE Guidelines.

Open-Access: This article is an open-access article that was selected by an in-house editor and fully peer-reviewed by external reviewers. It is distributed in accordance with the Creative Commons Attribution NonCommercial (CC BY-NC 4.0) license, which permits others to distribute, remix, adapt, build upon this work non-commercially, and license their derivative works on different terms, provided the original work is properly cited and the use is non-commercial. See: <http://creativecommons.org/licenses/by-nc/4.0/>

Country/Territory of origin: Japan

ORCID number: Miho Tamai 0000-0001-8016-9663; Eijiro Adachi 0000-0002-0520-5211; Masaya Kawase 0000-0003-4003-4013; Yoh-ichi Tagawa 0000-0002-7673-6781.

S-Editor: Gao CC

L-Editor: Webster JR

P-Editor: Guo X

REFERENCES

- 1 Dwyer BJ, Macmillan MT, Brennan PN, Forbes SJ. Cell therapy for advanced liver diseases: Repair or rebuild. *J Hepatol* 2021; **74**: 185-199 [PMID: 32976865 DOI: 10.1016/j.jhep.2020.09.014]
- 2 Sasaki K, Akagi T, Asaoka T, Eguchi H, Fukuda Y, Iwagami Y, Yamada D, Noda T, Wada H, Gotoh K, Kawamoto K, Doki Y, Mori M, Akashi M. Construction of three-dimensional vascularized functional human liver tissue using a layer-by-layer cell coating technique. *Biomaterials* 2017; **133**: 263-274 [PMID: 28448819 DOI: 10.1016/j.biomaterials.2017.02.034]
- 3 Iansante V, Chandrashekar A, Dhawan A. Cell-based liver therapies: past, present and future. *Philos Trans R Soc Lond B Biol Sci* 2018; **373** [PMID: 29786563 DOI: 10.1098/rstb.2017.0229]
- 4 Tricot T, De Boeck J, Verfaillie C. Alternative Cell Sources for Liver Parenchyma Repopulation: Where Do We Stand? *Cells* 2020; **9** [PMID: 32121068 DOI: 10.3390/cells9030566]
- 5 Inoue T, Iwazaki N, Araki T, Hitotsumachi H. Human-Induced Pluripotent Stem Cell-Derived Hepatocytes and their Culturing Methods to Maintain Liver Functions for Pharmacokinetics and Safety Evaluation of Pharmaceuticals. *Curr Pharm Biotechnol* 2020; **21**: 773-779 [PMID: 32003687 DOI: 10.2174/1389201021666200131123524]
- 6 Duan Y, Catana A, Meng Y, Yamamoto N, He S, Gupta S, Gambhir SS, Zern MA. Differentiation and enrichment of hepatocyte-like cells from human embryonic stem cells *in vitro* and *in vivo*. *Stem Cells* 2007; **25**: 3058-3068 [PMID: 17885076 DOI: 10.1634/stemcells.2007-0291]
- 7 Liu H, Kim Y, Sharkis S, Marchionni L, Jang YY. In vivo liver regeneration potential of human induced pluripotent stem cells from diverse origins. *Sci Transl Med* 2011; **3**: 82ra39 [PMID: 21562231 DOI: 10.1126/scitranslmed.3002376]
- 8 Mitaka T, Mizuguchi T, Sato F, Mochizuki C, Mochizuki Y. Growth and maturation of small hepatocytes. *J Gastroenterol Hepatol* 1998; **13** Suppl: S70-S77 [PMID: 9792037]
- 9 Prior N, Hindley CJ, Rost F, Meléndez E, Lau WWY, Göttgens B, Rulands S, Simons BD, Huch M. Lgr5⁺ stem and progenitor cells reside at the apex of a heterogeneous embryonic hepatoblast pool. *Development* 2019; **146** [PMID: 31142540 DOI: 10.1242/dev.174557]
- 10 Kuijk EW, Rasmussen S, Blokzijl F, Huch M, Gehart H, Toonen P, Begthel H, Clevers H, Geurts AM, Cuppen E. Generation and characterization of rat liver stem cell lines and their engraftment in a rat model of liver failure. *Sci Rep* 2016; **6**: 22154 [PMID: 26915950 DOI: 10.1038/srep22154]
- 11 Fausto N. Liver regeneration and repair: hepatocytes, progenitor cells, and stem cells. *Hepatology* 2004; **39**: 1477-1487

- [PMID: [15185286](#) DOI: [10.1002/hep.20214](#)]
- 12 **Miyajima A**, Tanaka M, Itoh T. Stem/progenitor cells in liver development, homeostasis, regeneration, and reprogramming. *Cell Stem Cell* 2014; **14**: 561-574 [PMID: [24792114](#) DOI: [10.1016/j.stem.2014.04.010](#)]
 - 13 **Sakai H**, Tagawa Y, Tamai M, Motoyama H, Ogawa S, Soeda J, Nakata T, Miyagawa S. Isolation and characterization of portal branch ligation-stimulated Hmga2-positive bipotent hepatic progenitor cells. *Biochem Biophys Res Commun* 2010; **403**: 298-304 [PMID: [21075076](#) DOI: [10.1016/j.bbrc.2010.11.021](#)]
 - 14 **Tamai M**, Adachi E, Tagawa Y. Characterization of a liver organoid tissue composed of hepatocytes and fibroblasts in dense collagen fibrils. *Tissue Eng Part A* 2013; **19**: 2527-2535 [PMID: [23815236](#) DOI: [10.1089/ten.TEA.2012.0704](#)]
 - 15 **Soto-Gutierrez A**, Navarro-Alvarez N, Yagi H, Nahmias Y, Yarmush ML, Kobayashi N. Engineering of an hepatic organoid to develop liver assist devices. *Cell Transplant* 2010; **19**: 815-822 [PMID: [20573303](#) DOI: [10.3727/096368910X508933](#)]
 - 16 **Hosoya S**, Watanabe M, Ueno M, Adachi E. Hepatoblastoma-derived cells (HepG2) used to restore polarized hepatocyte morphology by culturing them in 3D collagen gels. *Kitasato Med J* 2014; **44**: 139-147
 - 17 **Iwashiro H**, Hosoya S, Hirai K, Mima T, Ohashi S, Aihara T, Ito S, Ohara S, Adachi E. Characterization of dense artificial connective tissues generated in a newly designed bioreactor. *Connect Tissue Res* 2011; **52**: 340-352 [PMID: [21117908](#) DOI: [10.3109/03008207.2010.531801](#)]
 - 18 **Tsutsui M**, Ogawa S, Inada Y, Tomioka E, Kamiyoshi A, Tanaka S, Kishida T, Nishiyama M, Murakami M, Kuroda J, Hashikura Y, Miyagawa S, Satoh F, Shibata N, Tagawa Y. Characterization of cytochrome P450 expression in murine embryonic stem cell-derived hepatic tissue system. *Drug Metab Dispos* 2006; **34**: 696-701 [PMID: [16415121](#) DOI: [10.1124/dmd.105.007674](#)]
 - 19 **Tatsumi K**, Okano T. Hepatocyte Transplantation: Cell Sheet Technology for Liver Cell Transplantation. *Curr Transplant Rep* 2017; **4**: 184-192 [PMID: [28932649](#) DOI: [10.1007/s40472-017-0156-7](#)]
 - 20 **Heydari Z**, Najimi M, Mirzaei H, Shpichka A, Ruoss M, Farzaneh Z, Montazeri L, Piryaee A, Timashev P, Gramignoli R, Nussler A, Baharvand H, Vosough M. Tissue Engineering in Liver Regenerative Medicine: Insights into Novel Translational Technologies. *Cells* 2020; **9** [PMID: [32012725](#) DOI: [10.3390/cells9020304](#)]
 - 21 **Rana D**, Zreikat H, Benkirane-Jessel N, Ramakrishna S, Ramalingam M. Development of decellularized scaffolds for stem cell-driven tissue engineering. *J Tissue Eng Regen Med* 2017; **11**: 942-965 [PMID: [26119160](#) DOI: [10.1002/term.2061](#)]
 - 22 **Kita S**, Yasuchika K, Ishii T, Katayama H, Yoshitoshi EY, Ogiso S, Kawai T, Yasuda K, Fukumitsu K, Mizumoto M, Uemoto S. The Protective Effect of Transplanting Liver Cells Into the Mesentery on the Rescue of Acute Liver Failure After Massive Hepatectomy. *Cell Transplant* 2016; **25**: 1547-1559 [PMID: [26883767](#) DOI: [10.3727/096368916X690999](#)]
 - 23 **Iwasaki J**, Hata T, Uemoto S, Fujimoto Y, Kanazawa H, Teratani T, Hishikawa S, Kobayashi E. Portocaval shunt for hepatocyte package: challenging application of small intestinal graft in animal models. *Organogenesis* 2013; **9**: 273-279 [PMID: [23974217](#) DOI: [10.4161/org.25968](#)]
 - 24 **Langer R**, Vacanti JP. Tissue engineering. *Science* 1993; **260**: 920-926 [PMID: [8493529](#) DOI: [10.1126/science.8493529](#)]
 - 25 **Han F**, Wang J, Ding L, Hu Y, Li W, Yuan Z, Guo Q, Zhu C, Yu L, Wang H, Zhao Z, Jia L, Li J, Yu Y, Zhang W, Chu G, Chen S, Li B. Tissue Engineering and Regenerative Medicine: Achievements, Future, and Sustainability in Asia. *Front Bioeng Biotechnol* 2020; **8**: 83 [PMID: [32266221](#) DOI: [10.3389/fbioe.2020.00083](#)]
 - 26 **Forbes SJ**, Gupta S, Dhawan A. Cell therapy for liver disease: From liver transplantation to cell factory. *J Hepatol* 2015; **62**: S157-S169 [PMID: [25920085](#) DOI: [10.1016/j.jhep.2015.02.040](#)]
 - 27 **Kaur S**, Tripathi DM, Venugopal JR, Ramakrishna S. Advances in biomaterials for hepatic tissue engineering. *Curr Opin Biomed Eng* 2020; **13**: 190-196 [DOI: [10.1016/j.cobme.2020.05.005](#)]
 - 28 **Nicolas CT**, Hickey RD, Chen HS, Mao SA, Lopera Higuera M, Wang Y, Nyberg SL. Concise Review: Liver Regenerative Medicine: From Hepatocyte Transplantation to Bioartificial Livers and Bioengineered Grafts. *Stem Cells* 2017; **35**: 42-50 [PMID: [27641427](#) DOI: [10.1002/stem.2500](#)]
 - 29 **Salvatore L**, Gallo N, Natali ML, Terzi A, Sannino A, Madaghiele M. Mimicking the Hierarchical Organization of Natural Collagen: Toward the Development of Ideal Scaffolding Material for Tissue Regeneration. *Front Bioeng Biotechnol* 2021; **9**: 644595 [PMID: [33987173](#) DOI: [10.3389/fbioe.2021.644595](#)]
 - 30 **Messina A**, Luce E, Hussein M, Dubart-Kupperschmitt A. Pluripotent-Stem-Cell-Derived Hepatic Cells: Hepatocytes and Organoids for Liver Therapy and Regeneration. *Cells* 2020; **9** [PMID: [32059501](#) DOI: [10.3390/cells9020420](#)]



Published by **Baishideng Publishing Group Inc**
7041 Koll Center Parkway, Suite 160, Pleasanton, CA 94566, USA

Telephone: +1-925-3991568

E-mail: bpgoffice@wjgnet.com

Help Desk: <https://www.f6publishing.com/helpdesk>

<https://www.wjgnet.com>

