

World Journal of *Gastroenterology*

World J Gastroenterol 2022 June 7; 28(21): 2251-2402



REVIEW

- 2251** Viral hepatitis and hepatocellular carcinoma: From molecular pathways to the role of clinical surveillance and antiviral treatment
Stella L, Santopaolo F, Gasbarrini A, Pompili M, Ponziani FR

MINIREVIEWS

- 2282** Updates in therapeutic drug monitoring in inflammatory bowel disease
Lodhia N, Rao S
- 2291** Serological biomarkers for management of primary sclerosing cholangitis
Tornai D, Ven PL, Lakatos PL, Papp M

ORIGINAL ARTICLE

Basic Study

- 2302** Impact of radiotherapy on the immune landscape in oesophageal adenocarcinoma
Donlon NE, Davern M, O'Connell F, Sheppard A, Heeran A, Bhardwaj A, Butler C, Narayanasamy R, Donohoe C, Phelan JJ, Lynam-Lennon N, Dunne MR, Maher S, O'Sullivan J, Reynolds JV, Lysaght J

Case Control Study

- 2320** Intermittent hypoxia is involved in gut microbial dysbiosis in type 2 diabetes mellitus and obstructive sleep apnea-hypopnea syndrome
Tang SS, Liang CH, Liu YL, Wei W, Deng XR, Shi XY, Wang LM, Zhang LJ, Yuan HJ

Retrospective Study

- 2334** Serotonin type 3 receptor subunit gene polymorphisms associated with psychosomatic symptoms in irritable bowel syndrome: A multicenter retrospective study
Berens S, Dong Y, Fritz N, Walstab J, D'Amato M, Zheng T, Wahl V, Boekstegers F, Bermejo JL, Martinez C, Schmitteckert S, Clevers E, Engel F, Gauss A, Herzog W, Spiller R, Goebel-Stengel M, Mönnikes H, Andresen V, Thomas F, Keller J, Pehl C, Stein-Thöringer C, Clarke G, Dinan TG, Quigley EM, Sayuk G, Simrén M, Tesarz J, Rappold G, van Oudenhove L, Schaefer R, Niesler B

- 2350** Differentiating malignant and benign focal liver lesions in children using CEUS LI-RADS combined with serum alpha-fetoprotein
Jiang ZP, Zeng KY, Huang JY, Yang J, Yang R, Li JW, Qiu TT, Luo Y, Lu Q

Observational Study

- 2361** Socioeconomics and attributable etiology of primary liver cancer, 1990-2019
Xing QQ, Li JM, Dong X, Zeng DY, Chen ZJ, Lin XY, Pan JS

SYSTEMATIC REVIEWS

- 2383** Endoscopic ultrasound-guided injectable therapy for pancreatic cancer: A systematic review

Kaur J, Jaruvongvanich V, Chandrasekhara V

LETTER TO THE EDITOR

- 2396** Peripancreatic paraganglioma: Lesson from a round table

Petrelli F, Fratini G, Sbrozzi-Vanni A, Giusti A, Manta R, Vignali C, Nesi G, Amorosi A, Cavazzana A, Arganini M, Ambrosio MR

ABOUT COVER

Editorial Board Member of *World Journal of Gastroenterology*, Somashekar G Krishna, MD, MPH, AGAF, FASGE, FACP, Professor of Medicine, Director of Clinical Research, Division of Gastroenterology, Hepatology and Nutrition, The Ohio State University Wexner Medical Center, 395 West 12th Avenue, Room 226, Columbus, OH 43210, United States. somashekar.krishna@osumc.edu

AIMS AND SCOPE

The primary aim of *World Journal of Gastroenterology* (WJG, *World J Gastroenterol*) is to provide scholars and readers from various fields of gastroenterology and hepatology with a platform to publish high-quality basic and clinical research articles and communicate their research findings online. WJG mainly publishes articles reporting research results and findings obtained in the field of gastroenterology and hepatology and covering a wide range of topics including gastroenterology, hepatology, gastrointestinal endoscopy, gastrointestinal surgery, gastrointestinal oncology, and pediatric gastroenterology.

INDEXING/ABSTRACTING

The WJG is now indexed in Current Contents®/Clinical Medicine, Science Citation Index Expanded (also known as SciSearch®), Journal Citation Reports®, Index Medicus, MEDLINE, PubMed, PubMed Central, and Scopus. The 2021 edition of Journal Citation Report® cites the 2020 impact factor (IF) for WJG as 5.742; Journal Citation Indicator: 0.79; IF without journal self cites: 5.590; 5-year IF: 5.044; Ranking: 28 among 92 journals in gastroenterology and hepatology; and Quartile category: Q2. The WJG's CiteScore for 2020 is 6.9 and Scopus CiteScore rank 2020: Gastroenterology is 19/136.

RESPONSIBLE EDITORS FOR THIS ISSUE

Production Editor: *Ying-Yi Yuan*; Production Department Director: *Xiang Li*; Editorial Office Director: *Ze-Mao Gong*.

NAME OF JOURNAL

World Journal of Gastroenterology

ISSN

ISSN 1007-9327 (print) ISSN 2219-2840 (online)

LAUNCH DATE

October 1, 1995

FREQUENCY

Weekly

EDITORS-IN-CHIEF

Andrzej S Tarnawski

EDITORIAL BOARD MEMBERS

<http://www.wjgnet.com/1007-9327/editorialboard.htm>

PUBLICATION DATE

June 7, 2022

COPYRIGHT

© 2022 Baishideng Publishing Group Inc

INSTRUCTIONS TO AUTHORS

<https://www.wjgnet.com/bpg/gerinfo/204>

GUIDELINES FOR ETHICS DOCUMENTS

<https://www.wjgnet.com/bpg/GerInfo/287>

GUIDELINES FOR NON-NATIVE SPEAKERS OF ENGLISH

<https://www.wjgnet.com/bpg/gerinfo/240>

PUBLICATION ETHICS

<https://www.wjgnet.com/bpg/GerInfo/288>

PUBLICATION MISCONDUCT

<https://www.wjgnet.com/bpg/gerinfo/208>

ARTICLE PROCESSING CHARGE

<https://www.wjgnet.com/bpg/gerinfo/242>

STEPS FOR SUBMITTING MANUSCRIPTS

<https://www.wjgnet.com/bpg/GerInfo/239>

ONLINE SUBMISSION

<https://www.f6publishing.com>



Peripancreatic paraganglioma: Lesson from a round table

Federica Petrelli, Geri Fratini, Andrea Sbrozzi-Vanni, Andrea Giusti, Raffele Manta, Claudio Vignali, Gabriella Nesi, Andrea Amorosi, Andrea Cavazzana, Marco Arganini, Maria Raffaella Ambrosio

Specialty type: Gastroenterology and hepatology

Provenance and peer review: Unsolicited article; Externally peer reviewed.

Peer-review model: Single blind

Peer-review report's scientific quality classification

Grade A (Excellent): 0

Grade B (Very good): B

Grade C (Good): C

Grade D (Fair): 0

Grade E (Poor): 0

P-Reviewer: de Souza HSP, Brazil; Zhang CZ, China

A-Editor: Nakaji K

Received: December 7, 2021

Peer-review started: December 7, 2021

First decision: January 8, 2022

Revised: January 18, 2022

Accepted: May 14, 2022

Article in press: May 14, 2022

Published online: June 7, 2022



Federica Petrelli, Andrea Giusti, Andrea Cavazzana, Maria Raffaella Ambrosio, Pathology Unit, Azienda Sanitaria Toscana Nord Ovest, Pisa 56121, Italy

Geri Fratini, Marco Arganini, Surgery Unit, Azienda Sanitaria Toscana Nord Ovest, Pisa 56121, Italy

Andrea Sbrozzi-Vanni, Endoscopic Unit, Azienda Sanitaria Toscana Nord Ovest, Pisa 56121, Italy

Raffele Manta, Endoscopic Unit, Santa Maria Misericordia Hospital, Perugia 06122, Italy

Claudio Vignali, Interventional Radiology Unit, Azienda Sanitaria Toscana Nord Ovest, Pisa 56121, Italy

Gabriella Nesi, Department of Health Sciences, University of Florence, Florence 50139, Italy

Andrea Amorosi, Pathology Unit, Università Magna Graecia, Catanzaro 88100, Italy

Corresponding author: Maria Raffaella Ambrosio, PhD, Academic Research, Chief Doctor, Pathology Unit, Azienda Sanitaria Toscana Nord Ovest, Via Cocchi, Pisa 56121, Italy. mariaraffaella.ambrosio@uslnordovest.toscana.it

Abstract

We described the case of a peripancreatic paraganglioma (PGL) misdiagnosed as pancreatic lesion. Surgical exploration revealed an unremarkable pancreas and a large well-defined cystic mass originating at the mesocolon root. Radical enucleation of the mass was performed, preserving the pancreatic tail. Histologically, a diagnosis of PGL was rendered. Interestingly, two previously unreported mutations, one affecting the *KDR* gene in exon 7 and another on the *JAK3* gene in exon 4 were detected. Both mutations are known to be pathogenetic. Imaging and cytologic findings were blindly reviewed by an expert panel of clinicians, radiologists, and pathologists to identify possible causes of the misdiagnosis. The major issue was lack of evidence of a cleavage plane from the pancreas at imaging, which prompted radiologists to establish an intra-pancreatic origin. The blinded revision shifted the diagnosis towards an extra-pancreatic lesion, as the pancreatic parenchyma showed no structural alterations and no dislocation of the Wirsung duct. *Ex post*, the identified biases were the emergency setting of the radiologic examination and the very thin mesocolon sheet, which hindered clear definition of the lesion borders. Original endoscopic ultrasonography diagnosis was confirmed, emphasizing the intrinsic limit of this

technique in detecting large masses. Finally, pathologic review favored a diagnosis of PGL due to the morphological features and immunohistochemical profile. Eighteen months after tumor excision, the patient is asymptomatic with no disease relapse evident by either radiology or laboratory tests. Our report strongly highlights the difficulties in rendering an accurate pre-operative diagnosis of PGL.

Key Words: Peripancreatic paraganglioma; Pancreatic neuroendocrine tumor; Solid pseudopapillary neoplasm; S100; Succinate dehydrogenase subunit B gene and expression; Fine needle biopsy

©The Author(s) 2022. Published by Baishideng Publishing Group Inc. All rights reserved.

Core Tip: Our report strongly supports that paraganglioma should be included in the differential diagnosis of peripancreatic/pancreatic masses, highlighting the difficulties in establishing the accurate preoperative diagnosis, even after a second-round evaluation. In fact, due to the deep localization and the lack of specific clinical manifestations and imaging data, early diagnosis often relies solely on a level of suspicion, thus making it more probable to have a missed diagnosis or misdiagnosis. Moreover, the limited time spent with a patient in an emergency setting might impair the accuracy of the diagnosis, lowering quality and outcomes of healthcare delivery. A multidisciplinary team approach, involving skilled radiologists, endoscopists, pathologists, and surgeons, is of foremost importance for proper diagnosis and management, preventing undue surgical resections.

Citation: Petrelli F, Fratini G, Sbrozzi-Vanni A, Giusti A, Manta R, Vignali C, Nesi G, Amorosi A, Cavazzana A, Arganini M, Ambrosio MR. Peripancreatic paraganglioma: Lesson from a round table. *World J Gastroenterol* 2022; 28(21): 2396-2402

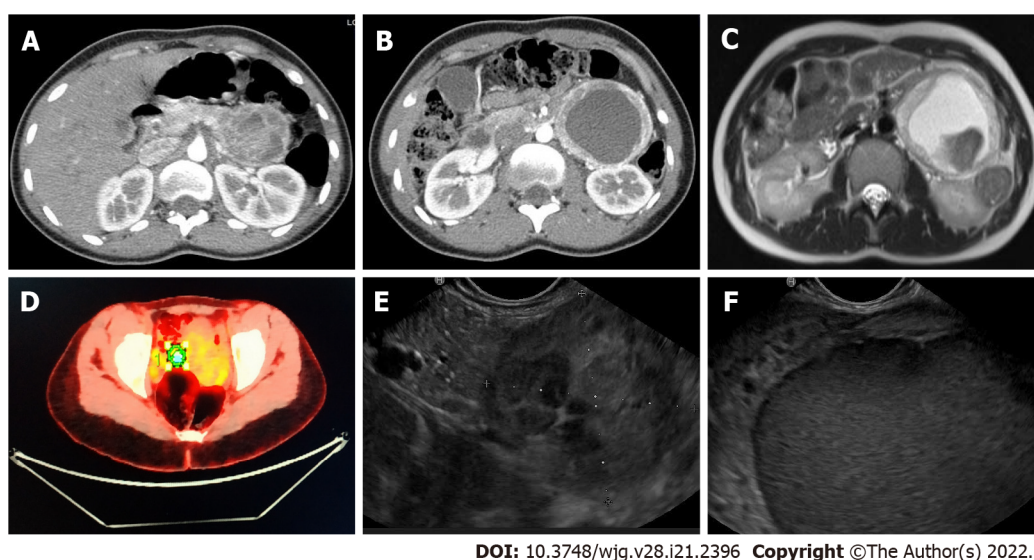
URL: <https://www.wjgnet.com/1007-9327/full/v28/i21/2396.htm>

DOI: <https://dx.doi.org/10.3748/wjg.v28.i21.2396>

TO THE EDITOR

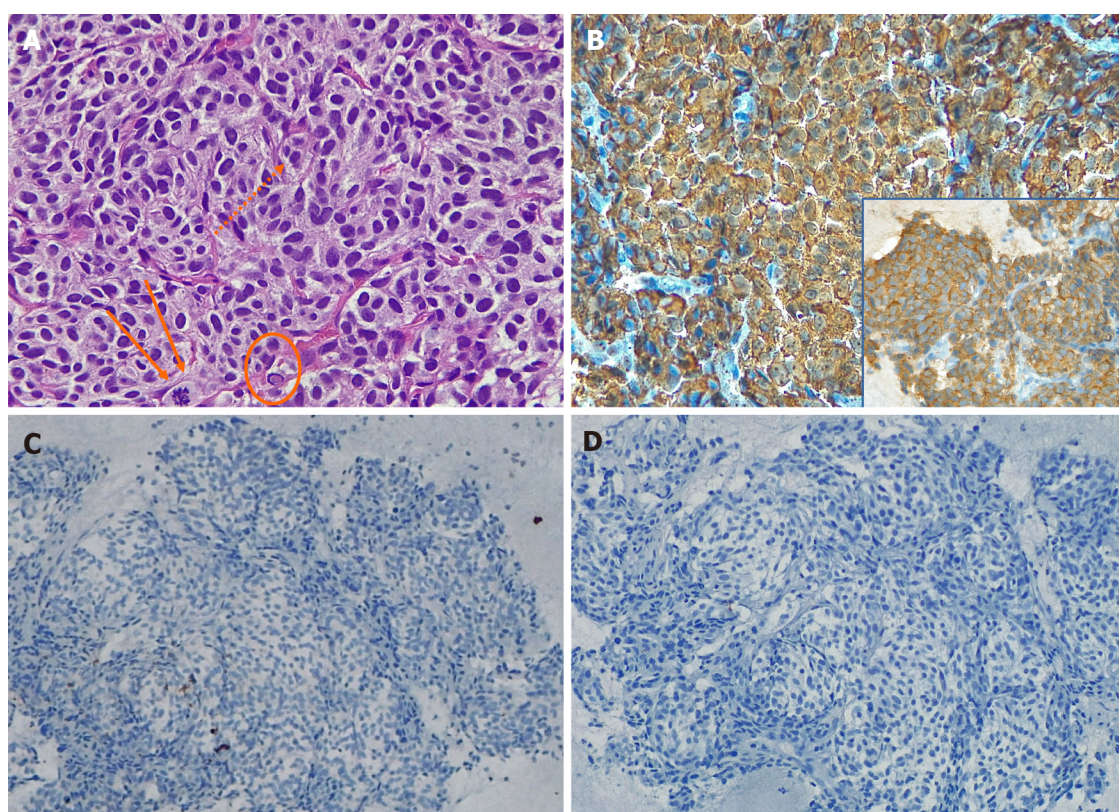
We read with interest the paper authored by Lanke *et al*[1] on a peripancreatic paraganglioma (PPGL) successfully diagnosed pre-operatively by endoscopic ultrasonography (EUS)-fine needle aspiration. After a careful review of the literature, the report highlights the enduring difficulties in achieving an accurate diagnosis of this rare entity prior to surgery. Among the 47 pancreatic/peripancreatic PGL reported so far, only 8 (17%) were correctly identified pre-operatively; the majority ($n = 29$, 62%) were misdiagnosed as pancreatic neuroendocrine tumors or pancreatic neoplasms/cysts. In almost all cases (80%), the treatment of choice was surgery, demonstrating the uncertainty of classification for such lesion and its unpredictable behavior[1].

In November 2020, a 23-year-old woman complaining of left hypocondrial pain, diarrhea, and sweating lasting for 4 d, was referred to the Emergency Unit of Ospedale Unico della Versilia. The physical examination was unremarkable, but the abdominal US showed a large cystic, liquid-filled mass close to the pancreatic tail. Whole-body computed tomography (CT) scan confirmed the presence of a 95-mm cystic lesion with thickened, contrast-enhanced walls and a marked inhomogeneous boundary with the pancreatic tail. The mass seemed to be adherent to the left renal artery, left kidney hilum, and homolateral ureter (Figures 1A and 1B). Imaging work-up was completed with abdominal nuclear magnetic resonance (NMR) revealing T1 signal hyperintensity (Figure 1C) and positron emission tomography disclosing abnormal hyperactivity of the mass (standard uptake value 4.7%) (Figure 1D). The suspicion of a solid-pseudopapillary neoplasm (SPN) *vs* a cystic pancreatic tumor was posed. Blood tests, including vasoactive intestinal peptide, C-peptide, pancreatic polypeptide, serotonin, carcinoembryonic antigen (CEA), Ca-125, and Ca-19.9, were within normal range; whereas chromogranin A (CgA) serum levels exceeded 1800 ng/mL (reference range: 0-108 ng/mL). EUS-fine needle biopsy (FNB) was scheduled. EUS examination showed a 10-cm lesion of the pancreatic tail. The lesion was hypoechoic with well-defined borders and a cystic component (Figures 1E and 1F). Two FNB passes were made using a 20 Gauge needle with Rapid On-Site Evaluation to ensure adequate sampling[2]. Intracystic fluid was aspirated and analyzed with the following results: Glucose, 45 mg/dL; pancreatic amylase, 5 U/L; CEA, 1.0 ng/mL; Ca-19.9, 9 U/mL. Cell block examination disclosed nests of small to medium-sized epithelioid cells exhibiting moderate amount of amphophilic granular cytoplasm and oval to round nuclei with smooth contours and dense chromatin (Figure 2A). Occasionally, small nucleoli (Figure 2A dots), sparse mitotic figures (Figure 2A arrows), and intra-cytoplasmic hyaline globules (Figure 2A encircled) were noted, as well as vague rosette-like formations and branching hyalinized



DOI: 10.3748/wjg.v28.i21.2396 Copyright ©The Author(s) 2022.

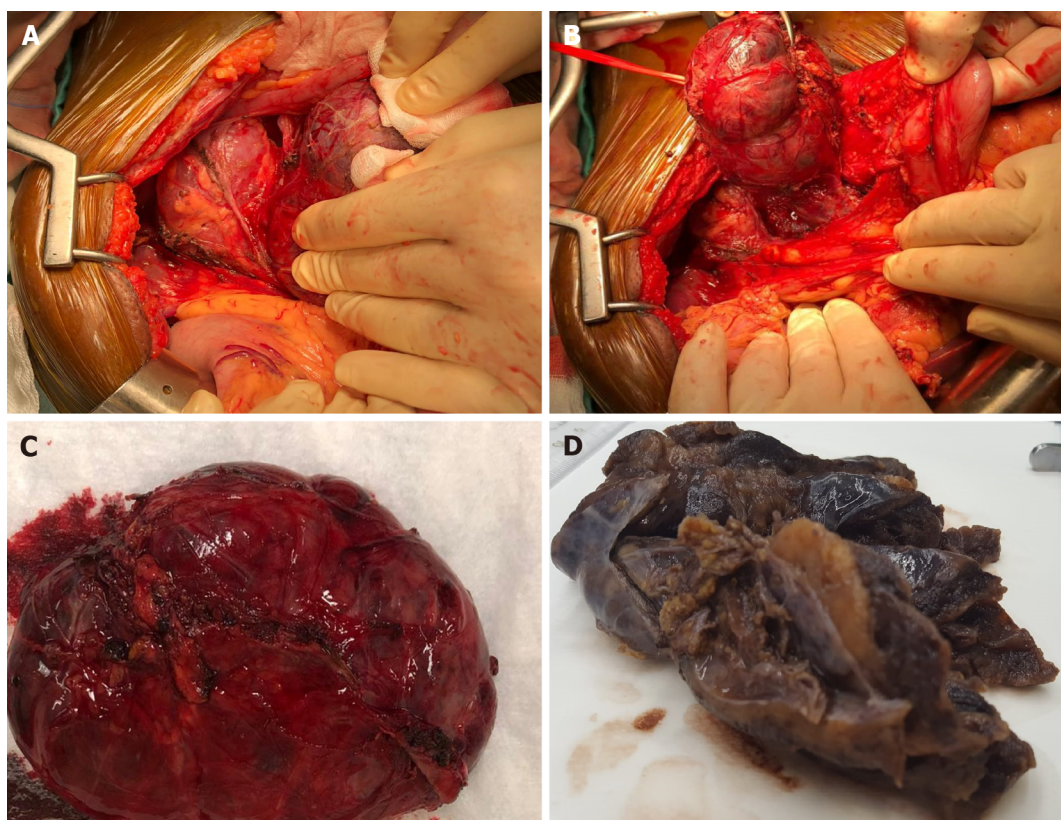
Figure 1 Radiologic findings. A and B: Computed tomography-scan showed a 95-mm cystic lesion with no cleavage plane from the pancreas; C: Nuclear magnetic resonance evidenced that the lesion was hyper-intense in T1; D: Positron emission tomography demonstrated a 4.7% standard uptake value; E and F: Endoscopic ultrasonography identified a hypoechoic mass close to the pancreatic tail.



DOI: 10.3748/wjg.v28.i21.2396 Copyright ©The Author(s) 2022.

Figure 2 Fine needle biopsy findings. A: Proliferation of small to medium-sized cells arranged in a nest pattern was evident, the cells occasionally showed small nucleoli (dots), mitotic figures (arrows), and intra-cytoplasmic hyaline globules (encircled), hematoxylin and eosin original magnification (O.M) × 40; B: Chromogranin A (CgA) positivity of neoplastic cells, CgA stain, O.M. × 20; B inset: Synaptophysin positivity of neoplastic cells, CgA stain, O.M. × 20; C: AE1/AE3 cytokeratins expression in scattered cells, cytokeratin AE1/AE3 stain, O.M. × 20; D: S100 negativity, S100 stain, O.M. × 20).

fibrovascular cores lined by neoplastic cells. Tumor cells diffusely expressed CgA (Figure 2B), synaptophysin (Figure 2B, inset), and GATA-3. Scattered cells were dot-like positive for AE1/AE3 cytokeratins (Figure 2C). Epithelial membrane antigen (EMA), PAX-8, and S100 protein (Figure 2D) were negative. A provisional diagnosis of neoplasm with neuroendocrine differentiation (either PGL or PanNET) *vs* SNP was made.



DOI: 10.3748/wjg.v28.i21.2396 Copyright ©The Author(s) 2022.

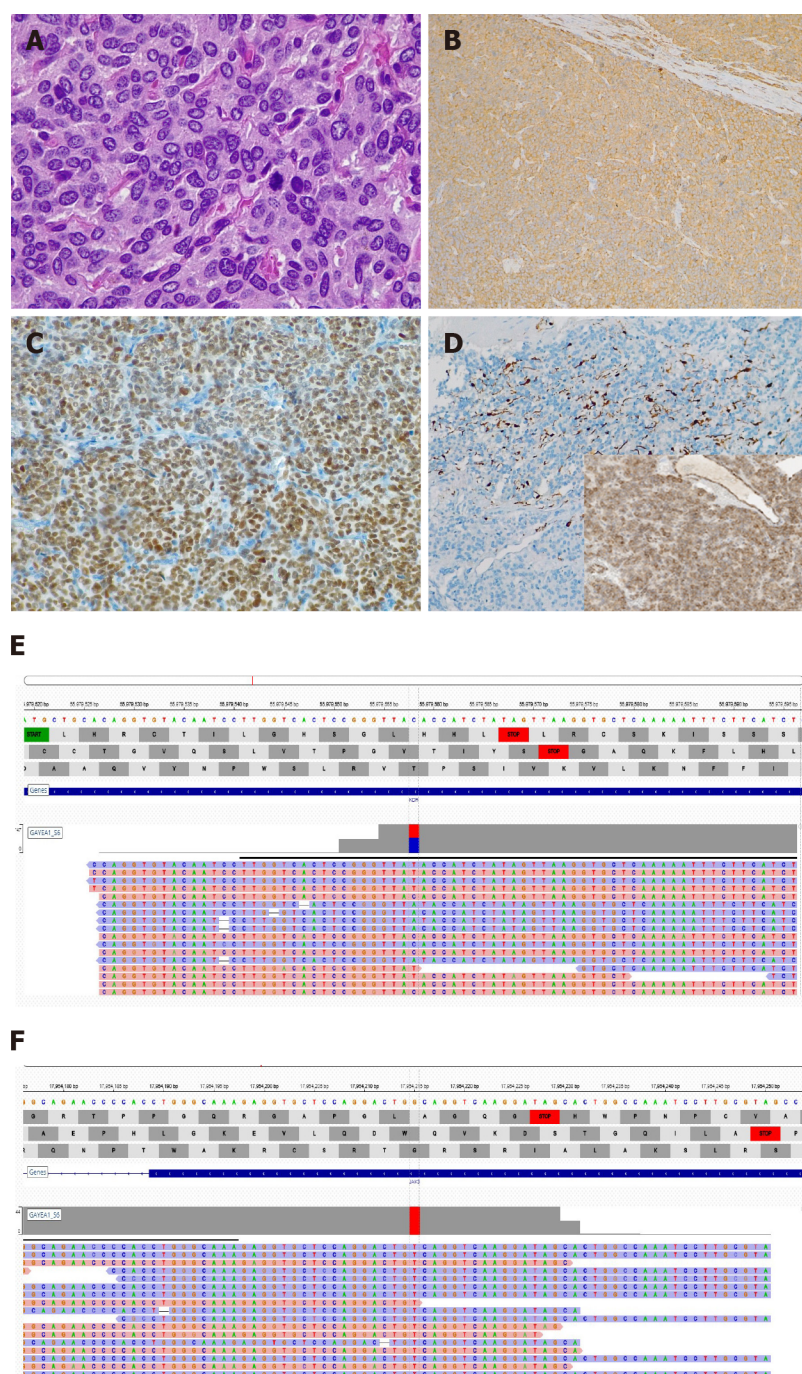
Figure 3 Macroscopic findings. A and B: At surgical exploration a large well-defined cystic mass located underneath the mesocolon plane was found; C: Radical enucleation of the lesion; D: Grossly, the cystic lesion showed a thick fibrous wall with a solid component and a yellowish, lobulated appearance on cut surface.

Surgical exploration revealed an unremarkable pancreas and a large well-defined cystic mass underneath the mesocolon plane, originating at the mesocolon root (Figures 3A and 3B). The lesion extended to the inferior margin of the pancreas and was strictly adherent but did not involve the organ parenchyma. As the capsule could be easily detached from the mesocolon sheets and vessels, radical enucleation was performed, preserving the pancreatic tail (Figure 3C).

The surgical specimen consisted of a 12-cm hemorrhagic cystic lesion, surrounded by a thick fibrous wall, with a solid component showing a yellowish, lobulated appearance on cut surface (Figure 3D). Microscopically, the tumor was composed of polygonal cells with abundant finely granular eosinophilic to amphophilic cytoplasm, mostly arranged in nests and anastomosing cords (Figure 4A). Areas with a diffuse growth pattern were also noted. Nuclei were regular, round to oval, with granular fine chromatin, small nucleoli, and occasional pseudoinclusions. The stroma was richly vascular. In the more cellular areas, pleomorphic cells with prominent nucleoli and occasional mitotic figures (2/high power field) were observed. There was evidence of focal capsular disruption. Cells were confirmed to be positive for CgA (Figure 4B), synaptophysin, GATA-3 (Figure 4C), and substantially negative for AE1/AE3 cytokeratins, EMA, and PAX-8. S100 and GFAP stained scanty cells encircling cell nests (Figure 4D). A final pathologic diagnosis of PGL, Grading System for Adrenal Pheochromocytoma and Paraganglioma score 6 (intermediate risk), was rendered[3,4].

Given the young age of the patient and the rarity of the tumor, succinate dehydrogenase subunit B (SDHB) protein expression was evaluated, and next generation sequencing (NGS) analysis, using the commercial kit “Miriapod NGS-IL” (Diatech) on MiSeq Illumina Platform, was carried out to identify mutations affecting genes associated with syndromic and/or familial conditions (*i.e.*, *SDHB*, *VHL*, *NF1*, *RET*). *SDHB* expression was preserved (Figure 4D, inset) and none of the above-mentioned genes were found to be mutated, thus ruling out a hereditary condition[5]. Interestingly, we detected two previously unreported mutations, one affecting the *KDR* gene in exon 7 (c.889G>A missense variant)[6], and another on the *JAK3* gene (c.394C>A missense variant) in exon 4[7,8] (Figures 4E and 4F). Both mutations are known to be pathogenetic in olfactory neuroblastoma[6], some forms of leukemia, and solid tumors, such as neuroendocrine tumors[7,8].

Imaging and cytologic findings were blindly reviewed by an expert panel of clinicians, radiologists, and pathologists to identify possible causes of misdiagnosis. The major issue was lack of evidence of a cleavage plane from the pancreas at US, CT, and NMR, which prompted radiologists to establish an intra-parenchymal origin. The blinded revision shifted the diagnosis towards an extra-pancreatic lesion



DOI: 10.3748/wjg.v28.i21.2396 Copyright ©The Author(s) 2022.

Figure 4 Histologic and molecular findings. A: The lesion was composed of nests and cords of polygonal cells with abundant granular cytoplasm, and occasional mitotic figures in the more cellular areas, hematoxylin and eosin original magnification (O.M.) $\times 60$; B: Chromogranin A (CgA) positivity in neoplastic cells; inset: Synaptophysin positivity in neoplastic cells, CgA stain, O.M. $\times 10$; C: GATA-3 positivity in neoplastic cells, GATA-3 stain, O.M. $\times 10$; D: S100-positive cells were scattered; inset: Succinate dehydrogenase subunit B (SDHB) expression was preserved, S100 stain, O.M. $\times 10$; inset, SDHB stain, O.M. $\times 10$; E: *KDR* mutation; F: *JAK3* mutation.

as the pancreatic parenchyma showed no structural alterations and no dislocation of the Wirsung duct. *Ex post*, the identified biases were the emergency regimen of radiologic examination, which impaired a precise assessment, and the very thin mesocolon sheet, probably on account of the patient's leanness, which hindered clear definition of the lesion borders, also masked by the extensive hemorrhagic component. Original EUS diagnosis was confirmed, emphasizing the intrinsic limit of the bi-dimensional image of trans-abdominal US in detecting a large mass in the same examination field. Finally, pathologic review of the FNB findings favored a diagnosis of PGL due to substantial negativity for cytokeratins and PAX-8, usually positive in PanNet[9,10], and absence of folded nuclei with longitudinal grooves, cholesterol crystals, and foamy macrophages, usually found in SPN[9]. Furthermore, diffuse cytoplasmic CgA reactivity is typically not seen in SPN[9]. The detection of S100-positive

sustentacular cells and Zellballen pattern, considering the hallmarks of PGL, has limited value in the diagnosis of PGL, since they may not be present in small samples or in sympathetic PGLs, as in our case [2,11]. Eighteen months after tumor excision, the patient is asymptomatic with no disease relapse evident with CT or NMR imaging; CgA levels are within the reference range.

In conclusion, our report strongly supports the suggestion by Lanke *et al* [1] that PGL should be included in the differential diagnosis of peripancreatic/pancreatic masses, and highlights the difficulties in establishing an accurate preoperative diagnosis even after a second round evaluation. Indeed, due to the deep localization and lack of specific clinical manifestations and imaging data, early diagnosis of PGL often relies solely on the level of suspicion, thus easily resulting in misdiagnosis or missed diagnosis [12,13]. A multidisciplinary team approach, involving skilled radiologists, endoscopists, pathologists, and surgeons, is of foremost importance for proper PGL diagnosis and management in order to prevent undue surgical resections [14]. In the present case, the first radiologic mistake affected all the diagnostic work-up, even after second round evaluation, and only the long-lasting experience of the surgeon avoided over-treatment (*i.e.*, distal splenopancreasectomy, as reported in most of the cases described so far) [1]. Since there are no definite criteria for malignancy, a close follow-up after surgery is mandatory [14,15]. Pathologists play a key role in providing clues that may disclose genetic profile and predict malignant potential of the tumor [1,3,4,14,15].

FOOTNOTES

Author contributions: Ambrosio MR, Amorosi A, and Arganini M contributed to the conception and design; Fratini G and Sbrozzi-Vanni A acquired the data; Cavazzana A, Giusti A, and Nesi G analyzed and interpreted of the data; Ambrosio MR, Fratini G, and Petrelli F drafted the article; Amorosi A, Arganini M, Manta R, Nesi G, and Vignali C contributed to the critical revision of the article for important intellectual content; and all authors approved the final manuscript to be published.

Conflict-of-interest statement: The authors have no conflicts of interest to declare.

Open-Access: This article is an open-access article that was selected by an in-house editor and fully peer-reviewed by external reviewers. It is distributed in accordance with the Creative Commons Attribution NonCommercial (CC BY-NC 4.0) license, which permits others to distribute, remix, adapt, build upon this work non-commercially, and license their derivative works on different terms, provided the original work is properly cited and the use is non-commercial. See: <https://creativecommons.org/licenses/by-nc/4.0/>

Country/Territory of origin: Italy

ORCID number: Federica Petrelli 0000-0002-7352-6770; Geri Fratini 0000-0002-7355-6770; Andrea Sbrozzi-Vanni 0000-0002-7352-6760; Andrea Giusti 0000-0002-7342-6770; Raffele Manta 0000-0002-2168-8372; Claudio Vignali 0000-0003-7355-6770; Gabriella Nesi 0000-0002-2614-944X; Andrea Amorosi 0000-0001-5576-494; Andrea Cavazzana 0000-0001-5576-594; Marco Arganini 0000-0002-0972-1672; Maria Raffaella Ambrosio 0000-0002-1172-6902.

S-Editor: Wang JJ

L-Editor: Filipodia

P-Editor: Wang JJ

REFERENCES

- 1 Lanke G, Stewart JM, Lee JH. Pancreatic paraganglioma diagnosed by endoscopic ultrasound-guided fine needle aspiration: A case report and review of literature. *World J Gastroenterol* 2021; **27**: 6322-6331 [PMID: 34712035 DOI: 10.3748/wjg.v27.i37.6322]
- 2 Zeng J, Simsir A, Oweity T, Hajdu C, Cohen S, Shi Y. Peripancreatic paraganglioma mimics pancreatic/gastrointestinal neuroendocrine tumor on fine needle aspiration: Report of two cases and review of the literature. *Diagn Cytopathol* 2017; **45**: 947-952 [PMID: 28560856 DOI: 10.1002/dc.23761]
- 3 Kimura N, Takayanagi R, Takizawa N, Itagaki E, Katabami T, Kakoi N, Rakugi H, Ikeda Y, Tanabe A, Nigawara T, Ito S, Kimura I, Naruse M; Pheochromocytoma Study Group in Japan. Pathological grading for predicting metastasis in pheochromocytoma and paraganglioma. *Endocr Relat Cancer* 2014; **21**: 405-414 [PMID: 24521857 DOI: 10.1530/ERC-13-0494]
- 4 Wang Y, Li M, Deng H, Pang Y, Liu L, Guan X. The systems of metastatic potential prediction in pheochromocytoma and paraganglioma. *Am J Cancer Res* 2020; **10**: 769-780 [PMID: 32266090]
- 5 Lam AK. Update on Paragangliomas and Pheochromocytomas. *Turk Patoloji Derg* 2015; **31** Suppl 1: 105-112 [PMID: 26177321 DOI: 10.5146/tjpath.2015.01318]
- 6 Wang L, Ding Y, Wei L, Zhao D, Wang R, Zhang Y, Gu X, Wang Z. Recurrent Olfactory Neuroblastoma Treated With Cetuximab and Sunitinib: A Case Report. *Medicine (Baltimore)* 2016; **95**: e3536 [PMID: 27149458 DOI: 10.1097/MD.0000000000003536]

- 7 **Quintás-Cardama A**, Manshouri T, Estrov Z, Harris D, Zhang Y, Gaikwad A, Kantarjian HM, Verstovsek S. Preclinical characterization of atiprimod, a novel JAK2 AND JAK3 inhibitor. *Invest New Drugs* 2011; **29**: 818-826 [PMID: [20372971](#) DOI: [10.1007/s10637-010-9429-z](#)]
- 8 **MacConaill LE**, Garcia E, Shivdasani P, Ducar M, Adusumilli R, Breneiser M, Byrne M, Chung L, Conneely J, Crosby L, Garraway LA, Gong X, Hahn WC, Hatton C, Kantoff PW, Kluk M, Kuo F, Jia Y, Joshi R, Longtine J, Manning A, Palescandolo E, Sharaf N, Sholl L, van Hummelen P, Wade J, Wollinson BM, Zepf D, Rollins BJ, Lindeman NI. Prospective enterprise-level molecular genotyping of a cohort of cancer patients. *J Mol Diagn* 2014; **16**: 660-672 [PMID: [25157968](#) DOI: [10.1016/j.jmoldx.2014.06.004](#)]
- 9 **Ohara Y**, Oda T, Hashimoto S, Akashi Y, Miyamoto R, Enomoto T, Satomi K, Morishita Y, Ohkohchi N. Pancreatic neuroendocrine tumor and solid-pseudopapillary neoplasm: Key immunohistochemical profiles for differential diagnosis. *World J Gastroenterol* 2016; **22**: 8596-8604 [PMID: [27784972](#) DOI: [10.3748/wjg.v22.i38.8596](#)]
- 10 **Abbasi A**, Wakeman KM, Pillarisetty VG. Pancreatic paraganglioma mimicking pancreatic neuroendocrine tumor. *Rare Tumors* 2020; **12**: 2036361320982799 [PMID: [33425308](#) DOI: [10.1177/2036361320982799](#)]
- 11 **Singhi AD**, Hruban RH, Fabre M, Imura J, Schulick R, Wolfgang C, Ali SZ. Peripancreatic paraganglioma: a potential diagnostic challenge in cytopathology and surgical pathology. *Am J Surg Pathol* 2011; **35**: 1498-1504 [PMID: [21921779](#) DOI: [10.1097/PAS.0b013e3182281767](#)]
- 12 **Zhang Z**, Tu Z, Lv Z, Luo Y, Yuan J. Case Report: Totally Laparoscopic Resection of Retroperitoneal Paraganglioma Masquerading as a Duodenal Gastrointestinal Stromal Tumor. *Front Surg* 2021; **8**: 586503 [PMID: [33768109](#) DOI: [10.3389/fsurg.2021.586503](#)]
- 13 **Lin S**, Peng L, Huang S, Li Y, Xiao W. Primary pancreatic paraganglioma: a case report and literature review. *World J Surg Oncol* 2016; **14**: 19 [PMID: [26801079](#) DOI: [10.1186/s12957-016-0771-2](#)]
- 14 **Tischler AS**. Pheochromocytoma and extra-adrenal paraganglioma: updates. *Arch Pathol Lab Med* 2008; **132**: 1272-1284 [PMID: [18684026](#) DOI: [10.5858/2008-132-1272-PAEPU](#)]
- 15 **Kimura N**, Takekoshi K, Naruse M. Risk Stratification on Pheochromocytoma and Paraganglioma from Laboratory and Clinical Medicine. *J Clin Med* 2018; **7** [PMID: [30150569](#) DOI: [10.3390/jcm7090242](#)]



Published by **Baishideng Publishing Group Inc**
7041 Koll Center Parkway, Suite 160, Pleasanton, CA 94566, USA

Telephone: +1-925-3991568

E-mail: bpgoffice@wjgnet.com

Help Desk: <https://www.f6publishing.com/helpdesk>

<https://www.wjgnet.com>

