

World Journal of *Gastroenterology*

World J Gastroenterol 2022 November 7; 28(41): 5893-6001



REVIEW

- 5893** Esophageal lichen planus: Current knowledge, challenges and future perspectives
Decker A, Schauer F, Lazaro A, Monasterio C, Schmidt AR, Schmitt-Graeff A, Kreisel W
- 5910** Epidemiology of liver cirrhosis and associated complications: Current knowledge and future directions
Liu YB, Chen MK

ORIGINAL ARTICLE

Retrospective Study

- 5931** Enhanced segmentation of gastrointestinal polyps from capsule endoscopy images with artifacts using ensemble learning
Zhou JX, Yang Z, Xi DH, Dai SJ, Feng ZQ, Li JY, Xu W, Wang H
- 5944** Transjugular intrahepatic portosystemic shunt *vs* conservative treatment for recurrent ascites: A propensity score matched comparison
Philipp M, Blattmann T, Bienert J, Fischer K, Hausberg L, Kröger JC, Heller T, Weber MA, Lamprecht G
- 5957** Feasibility of same-day discharge following endoscopic submucosal dissection for esophageal or gastric early cancer
Wang J, Li SJ, Yan Y, Yuan P, Li WF, Cao CQ, Chen WG, Chen KN, Wu Q
- 5968** Prognostic analysis of patients with combined hepatocellular-cholangiocarcinoma after radical resection: A retrospective multicenter cohort study
Zhang G, Chen BW, Yang XB, Wang HY, Yang X, Xie FC, Chen XQ, Yu LX, Shi J, Lu YY, Zhao HT
- 5982** High incidence combination of multiple primary malignant tumors of the digestive system
Yang XB, Zhang LH, Xue JN, Wang YC, Yang X, Zhang N, Liu D, Wang YY, Xun ZY, Li YR, Sun HS, Zhao LJ, Zhao HT

CASE REPORT

- 5993** Collagenous gastritis in a young Chinese woman: A case report
Zheng QH, Hu J, Yi XY, Xiao XH, Zhou LN, Li B, Bo XT

ABOUT COVER

Editorial Board Member of *World Journal of Gastroenterology*, Heitor Siffert Pereira de Souza, MD, PhD, Full Professor, Department of Clinical Medicine, School of Medicine, Federal University of Rio de Janeiro, Rio de Janeiro 21941-913, Brazil. heitor.souza@gmail.com

AIMS AND SCOPE

The primary aim of *World Journal of Gastroenterology* (WJG, *World J Gastroenterol*) is to provide scholars and readers from various fields of gastroenterology and hepatology with a platform to publish high-quality basic and clinical research articles and communicate their research findings online. WJG mainly publishes articles reporting research results and findings obtained in the field of gastroenterology and hepatology and covering a wide range of topics including gastroenterology, hepatology, gastrointestinal endoscopy, gastrointestinal surgery, gastrointestinal oncology, and pediatric gastroenterology.

INDEXING/ABSTRACTING

The WJG is now abstracted and indexed in Science Citation Index Expanded (SCIE, also known as SciSearch®), Current Contents/Clinical Medicine, Journal Citation Reports, Index Medicus, MEDLINE, PubMed, PubMed Central, Scopus, Reference Citation Analysis, China National Knowledge Infrastructure, China Science and Technology Journal Database, and Superstar Journals Database. The 2022 edition of Journal Citation Reports® cites the 2021 impact factor (IF) for WJG as 5.374; IF without journal self cites: 5.187; 5-year IF: 5.715; Journal Citation Indicator: 0.84; Ranking: 31 among 93 journals in gastroenterology and hepatology; and Quartile category: Q2. The WJG's CiteScore for 2021 is 8.1 and Scopus CiteScore rank 2021: Gastroenterology is 18/149.

RESPONSIBLE EDITORS FOR THIS ISSUE

Production Editor: Ying-Yi Yuan; Production Department Director: Xiang Li; Editorial Office Director: Jia-Ru Fan.

NAME OF JOURNAL

World Journal of Gastroenterology

ISSN

ISSN 1007-9327 (print) ISSN 2219-2840 (online)

LAUNCH DATE

October 1, 1995

FREQUENCY

Weekly

EDITORS-IN-CHIEF

Andrzej S Tarnawski

EDITORIAL BOARD MEMBERS

<http://www.wjgnet.com/1007-9327/editorialboard.htm>

PUBLICATION DATE

November 7, 2022

COPYRIGHT

© 2022 Baishideng Publishing Group Inc

INSTRUCTIONS TO AUTHORS

<https://www.wjgnet.com/bpg/gerinfo/204>

GUIDELINES FOR ETHICS DOCUMENTS

<https://www.wjgnet.com/bpg/GerInfo/287>

GUIDELINES FOR NON-NATIVE SPEAKERS OF ENGLISH

<https://www.wjgnet.com/bpg/gerinfo/240>

PUBLICATION ETHICS

<https://www.wjgnet.com/bpg/GerInfo/288>

PUBLICATION MISCONDUCT

<https://www.wjgnet.com/bpg/gerinfo/208>

ARTICLE PROCESSING CHARGE

<https://www.wjgnet.com/bpg/gerinfo/242>

STEPS FOR SUBMITTING MANUSCRIPTS

<https://www.wjgnet.com/bpg/GerInfo/239>

ONLINE SUBMISSION

<https://www.f6publishing.com>



Retrospective Study

Transjugular intrahepatic portosystemic shunt vs conservative treatment for recurrent ascites: A propensity score matched comparison

Martin Philipp, Theresia Blattmann, Jörn Bienert, Kristian Fischer, Luisa Hausberg, Jens-Christian Kröger, Thomas Heller, Marc-André Weber, Georg Lamprecht

Specialty type: Gastroenterology and hepatology

Provenance and peer review:

Unsolicited article; Externally peer reviewed.

Peer-review model: Single blind

Peer-review report's scientific quality classification

Grade A (Excellent): A, A
Grade B (Very good): B, B, B
Grade C (Good): 0
Grade D (Fair): D
Grade E (Poor): 0

P-Reviewer: Ferrarese A, Italy; Luo FX, China; Mucenic M, Brazil; Zaghloul MS, Egypt; Zhu YY, China

Received: July 9, 2022

Peer-review started: July 9, 2022

First decision: September 2, 2022

Revised: September 15, 2022

Accepted: October 19, 2022

Article in press: October 19, 2022

Published online: November 7, 2022



Martin Philipp, Theresia Blattmann, Jörn Bienert, Kristian Fischer, Luisa Hausberg, Georg Lamprecht, Department of Medicine, Division of Gastroenterology and Endocrinology, Rostock University Medical Center, Rostock 18057, Germany

Jens-Christian Kröger, Thomas Heller, Marc-André Weber, Institute of Diagnostic and Interventional Radiology, Pediatric Radiology and Neuroradiology, Rostock University Medical Centre, Rostock 18057, Germany

Corresponding author: Georg Lamprecht, MD, Academic Research, Director, Doctor, Full Professor, Department of Medicine, Division of Gastroenterology and Endocrinology, Rostock University Medical Center, 6 Ernst-Heydemann-Street, Rostock 18057, Germany.

georg.lamprecht@med.uni-rostock.de

Abstract

BACKGROUND

Transjugular intrahepatic portosystemic shunt (TIPS) placement is an effective intervention for recurrent tense ascites. Some studies show an increased risk of acute on chronic liver failure (ACLF) associated with TIPS placement. It is not clear whether ACLF in this context is a consequence of TIPS or of the pre-existing liver disease.

AIM

To better understand the risks of TIPS in this challenging setting and to compare them with those of conservative therapy.

METHODS

Two hundred and fourteen patients undergoing their first TIPS placement for recurrent tense ascites at our tertiary-care center between 2007 and 2017 were identified (TIPS group). Three hundred and ninety-eight patients of the same time interval with liver cirrhosis and recurrent tense ascites not undergoing TIPS placement (No TIPS group) were analyzed as a control group. TIPS indication, diagnosis of recurrent ascites, further diagnoses and clinical findings were obtained from a database search and patient records. The in-hospital mortality and ACLF incidence of both groups were compared using 1:1 propensity score

matching and multivariate logistic regressions.

RESULTS

After propensity score matching, the TIPS and No TIPS groups were comparable in terms of laboratory values and ACLF incidence at hospital admission. There was no detectable difference in mortality (TIPS: 11/214, No TIPS 13/214). During the hospital stay, ACLF occurred more frequently in the TIPS group than in the No TIPS group (TIPS: 70/214, No TIPS: 57/214, $P = 0.04$). This effect was confined to patients with severely impaired liver function at hospital admission as indicated by a significant interaction term of Child score and TIPS placement in multivariate logistic regression. The TIPS group had a lower ACLF incidence at Child scores < 8 points and a higher ACLF incidence at ≥ 11 points. No significant difference was found between groups in patients with Child scores of 8 to 10 points.

CONCLUSION

TIPS placement for recurrent tense ascites is associated with an increased rate of ACLF in patients with severely impaired liver function but does not result in higher in-hospital mortality.

Key Words: Liver cirrhosis; Ascites; Transjugular intrahepatic portosystemic shunt; Acute on chronic liver failure; Mortality; Propensity score

©The Author(s) 2022. Published by Baishideng Publishing Group Inc. All rights reserved.

Core Tip: Transjugular intrahepatic portosystemic shunt (TIPS) is an effective therapy for recurrent tense ascites, but there are concerns about further deterioration of liver function in patients with advanced cirrhosis. We retrospectively analyzed 214 patients receiving TIPS for ascites and compared their outcomes to matched conservatively treated patients. We found that TIPS can trigger acute on chronic liver failure (ACLF) in patients with severely impaired liver function. However, no increased mortality was found compared to conservatively treated patients. Despite an increased risk of ACLF, TIPS is a viable option for patients with ascites and hepatic impairment.

Citation: Philipp M, Blattmann T, Bienert J, Fischer K, Hausberg L, Kröger JC, Heller T, Weber MA, Lamprecht G. Transjugular intrahepatic portosystemic shunt vs conservative treatment for recurrent ascites: A propensity score matched comparison. *World J Gastroenterol* 2022; 28(41): 5944-5956

URL: <https://www.wjgnet.com/1007-9327/full/v28/i41/5944.htm>

DOI: <https://dx.doi.org/10.3748/wjg.v28.i41.5944>

INTRODUCTION

Transjugular intrahepatic portosystemic shunt (TIPS) is an effective therapy for complications of portal hypertension, such as ascites or esophageal variceal bleeding. Although TIPS placement is effective against ascites, early studies showed no survival benefit after TIPS placement compared to repeated paracentesis and albumin substitution[1-3]. More recent studies have shown more promising results, such as survival benefit[4-7], improved renal function[8,9] and better quality of life[10,11]. TIPS placement is therefore recommended as the treatment of choice[12,13].

Nevertheless, TIPS placement is an invasive procedure with considerable risks. In addition to hepatic encephalopathy and bleeding complications due to the placement procedure, sudden worsening of liver function is a serious complication. It has been observed after 5% to 10% of TIPS procedures and has a serious prognosis[14,15]. Such an acute deterioration of liver function accompanied by single- or multi-organ-failure is a common complication of advanced liver cirrhosis. This clinical syndrome has been described as acute on chronic liver failure (ACLF)[16]. Due to the risk of liver failure, TIPS placement for ascites is often limited to patients with good liver function and most randomized controlled trials have been conducted in patients with good liver function. It is still unclear how often ACLF occurs after TIPS placement and whether it is due to the TIPS procedure or rather to the severity of the underlying liver disease[17]. Recent recommendations argue against strict cut-off values for MELD, Child or other scoring systems. Instead, they recommend individual decision-making[18]. To better address the risk of ACLF in this challenging clinical situation the aim of this study was: (1) To determine whether ACLF occurs more often in patients with recurrent tense ascites treated with TIPS than in patients receiving conservative therapy; (2) to compare the outcome of ACLF associated with TIPS placement with the outcome of ACLF in patients receiving conservative therapy; and (3) to evaluate whether the risk of ACLF and death associated with TIPS placement increases disproportionately in patients with marginal

liver function.

MATERIALS AND METHODS

Selection of patients

A database was constructed containing ICD and OPS codes as well as laboratory values of all inpatients of the Division of Gastroenterology of the Rostock University Medical Center. Patients who were treated for liver cirrhosis between 2007 and 2017 were identified based on their discharge diagnosis using ICD10 codes K70.3, K70.4, K71.7, K74.6 and K76.6 (2197 cases of 1404 patients). Patients who received TIPS were identified using OPS codes 8-839*. Only cases of patients receiving their first TIPS for recurrent tense ascites were selected. Therefore there was only one case per patient in the TIPS group. Cases of patients who had liver cirrhosis and tense ascites requiring paracentesis, but did not undergo TIPS placement were selected for comparison (No TIPS group). If several cases were available for the same patient in the No TIPS group (*e.g.*, because of multiple hospital admissions), the latest case was selected. TIPS indication, diagnosis of recurrent tense ascites, further diagnoses and clinical findings were obtained from ICD codes and from patient files. Laboratory values were obtained from the data base. Cases with missing data on relevant clinical or laboratory findings were removed (43 cases). Cases with pre-existing renal insufficiency requiring dialysis (30 cases) or with malignant tumors (471 cases) were also excluded. Patient selection resulted in 398 patients in the No TIPS group and 214 patients in the TIPS group. After data collection was completed, all patient data were pseudonymized. Patient selection criteria and reasons for exclusion from data analysis are depicted in [Figure 1](#). The study was approved by the local ethics committee of the Rostock University Medical Center (A2018-0127).

The MELD-score and ACLF grade as defined by Moreau *et al*[16] at hospital admission and the highest ACLF grade achieved during hospital stay were determined for each patient. Furthermore, the in-hospital mortality of both groups was determined. Multivariate logistic regressions revealed that bilirubin, creatinine, INR, CRP, sodium, white blood cell count, albumin and age were predictive either for survival or for group membership in TIPS *vs* No TIPS group or for both. Therefore these covariates were chosen for the propensity score matching procedure. The matching (1:1 greedy matching, nearest neighbor, without replacement) resulted in a matched sample of 428 patients (214 patients in the No TIPS and 214 in the TIPS group).

Statistical analysis

Statistical evaluation and matching were carried out using R (R version 3.6.3[19] and the R Package MatchIt, Version 4.1.0[20]). The distribution of most of the continuous data had significant positive skew, therefore non-parametric test methods were used. Continuous variables were compared using the Mann-Whitney *U* test and categorical variables using the chi-square or Fisher's exact test. Data on an ordinal scale (ACLF, hepatic encephalopathy) were treated as continuous. To account for the loss of statistical independence due to the matching procedure[21,22], comparisons between the matched groups were carried out using the Wilcoxon signed rank test or McNemar test. Additional multivariate logistic regressions were performed as sensitivity analysis and for further insights into effects of liver function, TIPS placement and their interaction on ACLF incidence and in-hospital mortality. The statistical methods of this study were reviewed by Henrik Rudolf from Rostock University Medical Center, Institute for Biostatistics and Informatics in Medicine and Ageing Research.

RESULTS

Patient characteristics and matching

Patient demographics and liver disease characteristics of the unmatched cohort are summarized in [Table 1](#). Continuous values are given as median and range, categorical values as total number and percentage. Patients receiving TIPS had better liver function as assessed by MELD and Child score, bilirubin, INR, albumin and severity of hepatic encephalopathy. In addition, CRP, platelets and leukocytes differed significantly. Creatinine did not differ significantly. After propensity score matching all covariates were balanced in both groups ([Table 2](#)) and all variables used for matching did no longer predict group membership in the matched patients.

From 2007 to 2017, both covered and uncovered stents were used for TIPS at our institution. Uncovered stents were placed in 42% and covered stents in 58% of cases. Stents were mostly dilated to 7-8 mm. Smaller or larger diameters were rarely chosen (6mm in 2 patients, 9 or 10 mm in 15 patients). No effect of stent type or stent diameter on any of our endpoints was found in either univariate or multivariate analyses (data not shown).

Table 1 Baseline characteristics at hospital admission (all patients)

Characteristics	No TIPS	TIPS	P value
Patients	398	214	
Male	269 (68%)	153 (71%)	0.320
Age (yr)	59.5 (26.4-93.4)	59.1 (29.9-80.7)	0.190
Cause of cirrhosis			0.130
-Alcohol	305 (77%)	179 (84%)	
-Viral hepatitis	11 (3%)	4 (2%)	
-Other	82 (21%)	31 (14%)	
Child points (min-max)	10 (7-15)	9 (7-14)	< 0.001
Hepatic encephalopathy (West-Haven)			0.040
-None	276 (69%)	165 (77%)	
-Grade 1-2	73 (18%)	30 (14%)	
-Grade 3-4	49 (12%)	19 (9%)	
ACLF grade at hospital admission			0.020
-No ACLF	294 (74%)	173 (81%)	
-ACLF grade 1	64 (16%)	39 (18%)	
-ACLF grade 2	32 (8%)	1 (0.5%)	
-ACLF grade 3	8 (2%)	1 (0.5%)	
Laboratory findings			
-Meld	18 (7-40)	14 (7-40)	< 0.001
-Total bilirubin (μmol/L)	49.7 (5.9-668.0)	28.1 (6.1-688.5)	< 0.001
-Creatinine (μmol/L)	100.5 (23.1-781.0)	107.0 (42.3-783.5)	0.180
-INR	1.45 (0.92-9.2)	1.28 (0.97-2.5)	< 0.001
-Sodium (μmol/L)	134 (106-149)	133 (115-146)	0.760
-Albumin (g/L)	22.6 (7.9-48.7); NA: 55	26.1 (11.0-39.6); NA: 23	< 0.001
-CRP (mg/L)	25.6 (1.0-283.0)	18.0 (2.0-181.0)	< 0.001
-Hemoglobin (mmol/L)	6.8 (2.0-9.8)	6.7 (3.4-10.0)	0.310
-Platelets (Gpt/L)	134.5 (22.0-715.0)	153.5 (13.0-668.0)	0.002
-Leucocytes (Gpt/L)	8.76 (1.34-44.90)	7.34 (2.72-33.20)	< 0.001

Continuous variables are given as median and range, categorical variables as total number and percentage. Continuous variables were compared using the Mann-Whitney-*U*-test and categorical variables using the chi-square test. NA: Not available; ACLF: Acute on chronic liver failure; TIPS: Transjugular intrahepatic portosystemic shunt.

Incidence of ACLF and in-hospital mortality

Table 3 shows the incidence of ACLF as well as the in-hospital mortality of the matched patients. Patients receiving TIPS more often had ACLF of any grade (TIPS: 70/214 patients *vs* No TIPS 57/214 patients) and achieved higher ACLF grades ($P = 0.04$). An increase in ACLF grade (as compared to the ACLF grade at hospital admission) was more common in the TIPS group than in the No TIPS group (in 38/214 patients *vs* 23/214 patients). The hospital stay was longer in the TIPS group. The majority of patients in both groups had ACLF 1, which was due to renal failure. Organ systems affected in patients with ACLF > 1 were brain (hepatic encephalopathy grade 3-4) and/or liver function based on bilirubin in addition to renal failure. ACLF > 1 was mostly due to acute infections.

There was no difference in terms of in-hospital mortality. In the TIPS group 11 of 214 patients died, in the No TIPS group 13 of 214 patients died. The mortality increased with the ACLF grade in both groups. Multivariate logistic regressions were performed as a sensitivity analysis and confirmed that TIPS was a risk factor for ACLF but not for in-hospital mortality (**Table 4**). Mortality in any ACLF stratum except ACLF 2 was comparable in both groups. For patients with ACLF 2, we found a lower mortality in the

Table 2 Baseline characteristics at hospital admission (matched groups)

Characteristics	No TIPS	TIPS	P value
Patients	214	214	
Male	142 (66%)	153 (71%)	0.30
Age (yr)	59.4 (26.4-93.4)	59.1 (29.9-80.7)	0.14
Cause of cirrhosis			0.26
-Alcohol	163 (76%)	179 (84%)	
-Viral hepatitis	8 (4%)	4 (2%)	
-Other	43 (20%)	31 (14%)	
Child points (min-max)	9 (7-14)	9 (7-14)	0.76
Hepatic encephalopathy (west-haven)			0.65
-None	173 (81%)	165 (77%)	
-Grade 1-2	22 (10%)	30 (14%)	
-Grade 3-4	19 (9%)	19 (9%)	
ACLF grade at hospital admission			0.37
-No ACLF	176 (82%)	173 (81%)	
-AACLF 1	36 (17%)	39 (18%)	
-ACLF 2	2 (1%)	1 (0.5%)	
-ACLF 3	0 (0%)	1 (0.5%)	
Laboratory findings			
-Meld	14 (7-36)	14 (7-40)	0.97
-Total bilirubin (μmol/L)	29.7 (5.9-261.0)	28.1 (6.1-688.5)	0.10
-Creatinine (μmol/L)	90.9 (23.1-781.0)	107.0 (42.3-783.5)	0.08
-INR	1.32 (0.92-2.41)	1.28 (0.97-2.50)	0.28
-Sodium (mmol/L)	135 (106-144)	133 (115-146)	0.10
-Albumin (g/L)	24.3 (7.9-48.7); NA: 27	26.1 (11.0-39.6); NA: 23	0.61
-CRP (mg/L)	18.7 (1.0-283.0)	18.0 (2.0-181.0)	0.10
-Hemoglobin (mmol/L)	6.8 (2.1-9.8)	6.7 (3.4-10.0)	0.43
-Platelets (Gpt/L)	141.0 (23.0-715.0)	154.0 (13.0-668.0)	0.08
-Leucocytes (Gpt/L)	7.58 (1.34-44.90)	7.34 (2.72-33.20)	0.98

Continuous variables are given as median and range, categorical variables as total number and percentage. Continuous variables were compared using Wilcoxon signed-rank test and categorical variables using McNemar-Test. NA: Not available; ACLF: Acute on chronic liver failure; TIPS: Transjugular intrahepatic portosystemic shunt.

TIPS group compared to the No TIPS group (OR 0.09, 95%CI 0.01-0.87). The mortality of TIPS patients who increased in ACLF by 2 or 3 grades after TIPS placement was high (4/10 died). This also applies to the No TIPS group with an even higher mortality (4/5 patients with an increase of 2 or 3 ACLF grades compared to ACLF grade at hospital admission died).

Most patients in both groups (No TIPS 89%, TIPS 82%) without ACLF at admission did not develop any ACLF during hospital stay. Many patients who developed an ACLF grade 2 or 3 already had ACLF at hospital admission (5/10 patients in the No TIPS group and 11/20 patients in the TIPS group). Three patients in the TIPS group developed ACLF during the period between hospital admission and TIPS placement, *i.e.* before TIPS was implanted. Many of the pre-TIPS ACLFs resolved after TIPS placement. When comparing the highest ACLF grade before TIPS to the ACLF grade at hospital discharge (assuming ACLF 3 for patients who died), 32 patients (15%) improved their ACLF grade after TIPS placement while only 21 patients (10%) had a worse ACLF grade at discharge than at the time of TIPS placement.

Table 3 Changes of acute on chronic liver failure grade during hospital stay and in-hospital mortality (matched groups)

Event	No TIPS	TIPS	P value/OR (95%CI)
Hospital stay (d)	10 (1-78)	14 (3-64)	$P < 0.001$
Highest ACLF grade			$P = 0.041$
-No ACLF	157 (73%)	144 (67%)	
-ACLF 1	47 (22%)	50 (23%)	
-ACLF 2	8 (4%)	15 (7%)	
-ACLF 3	2 (1%)	5 (2%)	
-Any ACLF	57 (27%)	70 (33%)	
Mortality by ACLF			
-Over all	13/214 (6.1%)	11/214 (5.1%)	OR: 0.84 (0.33 -2.08)
-No ACLF	3/157 (1.9%)	0/144 (0%)	OR: 0 (0.00 -2.63)
-ACLF 1	3/47 (6.4%)	4/50 (8%)	OR: 1.27 (0.20 -9.18)
-ACLF 2	6/8 (75%)	3/15 (20%)	OR: 0.09 (0.01 -0.87)
-ACLF 3	1/2 (50%)	4/5 (80%)	OR: 3.16 (0.03 -389.17)
-Any ACLF	10/57 (17.5%)	11/70 (15.7%)	OR: 0.88 (0.31-2.52)
Increase in ACLF grade			$P = 0.03$
-No increase	191 (89.3%)	176 (82.2%)	
-1 grade	18 (8.4%)	28 (13.1%)	
-2 grades	4 (1.9%)	7 (3.3%)	
-3 grades	1 (0.5%)	3 (1.4%)	
Mortality by ACLF increase			
-No increase	5/191 (2.6%)	2/176 (1.1%)	OR: 0.43 (0.04-2.66)
-1 grade	4/18 (22.2%)	5/28 (17.9%)	OR: 0.77 (0.14-4.55)
-2 grades	3/4 (75.0%)	2/7 (20.0%)	OR: 0.16 (0.003-3.50)
-3 grades	1/1 (100%)	2/3 (66.7%)	OR: 0 (0.00-116.8)
-Any increase	8/23 (34.8%)	9/38 (23.7%)	OR: 0.58 (0.16-2.14)

OR: Odds ratio; ACLF: Acute on chronic liver failure; TIPS: Transjugular intrahepatic portosystemic shunt.

Estimated in-hospital mortality and risk of ACLF

Using multivariate logistic regression models based on the MELD or Child scores at admission, the probabilities of death in-hospital and of an increase in ACLF grade were estimated for the TIPS and the No TIPS group (Figure 2). The likelihood of death increases with the severity of the disease at admission; independent of whether this is assessed by MELD or by Child scores (Figure 2A and B). The regression curves for mortality are almost parallel, indicating that mortality depends only on liver function, but not on TIPS placement or an interaction between TIPS placement and the liver function. However, the regression curves for an increase in ACLF grade differ clearly between TIPS and No TIPS (Figure 2C and D). The probability of an ACLF in the TIPS group is lower than in the No TIPS group at low to moderate MELD-and Child-levels, but it is higher than in the No TIPS group at high MELD and Child scores. The intersection of the regression curves suggests an interaction between MELD/Child score and TIPS placement. In fact, the multivariate logistic regression shows a statistically significant interaction term for Child-score and TIPS ($P = 0.03$; Table 5). In our model the TIPS group has a lower ACLF incidence at Child scores lower than 8 points and a higher ACLF incidence at 11 points and higher. Between 8 and 11 points the standard errors of both groups overlap, indicating that there is no relevant difference between both groups. The same effect can be observed when using the MELD score instead of the Child score. However, the interaction is weaker and not statistically significant ($P = 0.19$).

Table 4 Sensitivity analysis: Multivariate regressions (main effects only)

Variable	Estimate	SE	P value	Estimate	SE	P value
Complete model			Best model			
Mortality						
Intercept	3.63	3.27	0.268	4.39	3.22	0.173
Creatinine	1.59×10^{-3}	1.37×10^{-3}	0.246	1.99×10^{-3}	1.32×10^{-3}	0.132
Bilirubin	7.26×10^{-4}	1.10×10^{-3}	0.505	-	-	-
INR	3.49×10^{-1}	2.15×10^{-1}	0.104	3.47×10^{-1}	2.12×10^{-1}	0.101
CRP	3.27×10^{-3}	3.10×10^{-3}	0.292	-	-	-
Leucocytes	7.01×10^{-2}	2.64×10^{-2}	0.008	7.84×10^{-2}	2.53×10^{-2}	0.002
HE 1-2	-2.88×10^{-1}	4.28×10^{-1}	0.500	-2.67×10^{-1}	4.1×10^{-1}	0.523
HE 3-4	2.24	3.56×10^{-1}	< 0.001	2.26	3.50×10^{-1}	< 0.001
Albumin	-9.61×10^{-2}	2.76×10^{-2}	< 0.001	-1.02×10^{-1}	2.72×10^{-2}	< 0.001
Sodium	-6.21×10^{-2}	2.45×10^{-2}	0.011	-6.51×10^{-2}	2.45×10^{-2}	0.004
Age	1.22×10^{-4}	4.24×10^{-5}	0.004	1.16×10^{-4}	4.04×10^{-5}	0.004
TIPS	-7.29×10^{-1}	4.12×10^{-1}	0.077	-8.22×10^{-1}	4.01×10^{-1}	0.040
ACLF						
Intercept	-1.822	2.713	0.502	-2.70	8.51×10^{-1}	0.002
Creatinine	-1.06×10^{-3}	1.21×10^{-3}	0.384	-	-	-
Bilirubin	2.81×10^{-3}	9.50×10^{-4}	0.003	2.99×10^{-3}	8.69×10^{-4}	0.001
INR	2.16×10^{-1}	2.01×10^{-1}	0.281	-	-	-
CRP	5.21×10^{-3}	2.58×10^{-3}	0.043	4.67×10^{-3}	2.39×10^{-3}	0.050
Leucocytes	6.28×10^{-3}	2.43×10^{-2}	0.780	-	-	-
HE 1-2	1.22×10^{-1}	3.06×10^{-1}	0.690	1.47×10^{-1}	3.02×10^{-1}	0.627
HE 3-4	1.62	3.01×10^{-1}	< 0.001	1.63	2.94×10^{-1}	< 0.001
Albumin	-3.80×10^{-2}	2.00×10^{-2}	0.058	-3.98×10^{-2}	1.99×10^{-2}	0.046
Sodium	-1.03×10^{-2}	1.98×10^{-2}	0.603	-	-	-
Age	6.39×10^{-5}	3.11×10^{-5}	0.039	5.63×10^{-5}	2.96×10^{-5}	0.057
TIPS	5.17×10^{-1}	2.64×10^{-1}	0.050	4.39×10^{-1}	2.55×10^{-1}	0.085

Dependent variables were in-hospital mortality (upper panel) and any increase in acute on chronic liver failure grade (lower panel). The full models (left side) included all parameters used for propensity score matching as covariates. After stepwise backward elimination by Akaike information criterion, a model (best model, right side) was selected for each dependent variable. ACLF: Acute on chronic liver failure; TIPS: Transjugular intrahepatic portosystemic shunt.

DISCUSSION

Most of the randomized controlled trials (RCT) have been performed in patients with good liver function. This applies in particular to the RCTs that showed a survival benefit. In these studies the mean MELD was 9.6[6] to 12.1[7]). Therefore many patients with refractory ascites receive no TIPS due to impaired liver function. Others have considered MELD scores ≥ 18 [13,23,24] to ≥ 24 [25,26] and bilirubin levels ≥ 51.3 to ≥ 85.5 $\mu\text{mol/L}$ [13,27] as contraindications for TIPS. Our TIPS patients had a comparatively poor liver function at hospital admission (MELD median 14, mean 15.2), allowing to describe mortality and morbidity in this high-risk group.

In our cohort of patients with significantly impaired liver function ACLF incidence and in-hospital mortality was within the range observed in other studies on ACLF[16,28,29]. The in-hospital mortality was neither positively nor negatively influenced by TIPS placement despite the comparatively poor liver function of our patients. In the matched cohorts ACLF occurred more frequently in the TIPS group than in conservatively treated patients. The results of the multivariate logistic regressions suggest that this effect depends on the extent of the pre-existing liver damage. In patients with good liver function

Table 5 Multivariate logistic regressions with interaction terms

Model	Dependent variable	Parameters	Estimate	SE	z value	P value
A	In-hospital Mortality (y/n)	Intercept	-3.8600	0.4340	-8.887	$< 2 \times 10^{-16}$
		MELD-Score	0.0990	0.0180	5.628	1.82×10^{-8}
		TIPS	-1.3570	1.0590	-1.281	0.200
		MELD: TIPS	0.0330	0.0500	0.668	0.504
B	In-hospital Mortality (y/n)	Intercept	-7.1320	0.9810	-7.271	3.56×10^{-13}
		Child (points)	0.4880	0.0840	5.814	6.09×10^{-9}
		TIPS	-1.6760	2.2350	-0.750	0.453
		Child: TIPS	0.0934	0.2020	0.463	0.643
C	Increase in ACLF grade (y/n)	Intercept	-3.1860	0.3610	-8.824	$< 2 \times 10^{-16}$
		MELD	0.1020	0.0160	6.461	1.04×10^{-10}
		TIPS	-0.7780	0.7120	-1.092	0.275
		MELD: TIPS	0.0480	0.0368	1.318	0.187
D	Increase in ACLF grade (y/n)	Intercept	-5.2640	0.7480	-7.040	1.93×10^{-12}
		Child (points)	0.3880	0.0670	5.807	6.37×10^{-9}
		TIPS	-3.1980	1.5300	-2.090	0.0366
		Child: TIPS	0.3190	0.1145	2.191	0.0285

For models C and D death was treated as an increase in acute on chronic liver failure. Models A and B show an effect of only the MELD/Child scores on mortality. Transjugular intrahepatic portosystemic shunt (TIPS) and the interaction of TIPS and MELD/Child scores (MELD: TIPS, Child: TIPS) have no significant influence on mortality (A and B). In model D a significant interaction term Child:TIPS exists. In model C the interaction term MELD: TIPS is not significant, indicating a weaker interaction than in model D. ACLF: Acute on chronic liver failure; TIPS: Transjugular intrahepatic portosystemic shunt.

(Child ≤ 8) an ACLF occurs less frequently in the TIPS group. However, at higher scores (Child ≥ 11), the probability of developing an ACLF is higher in the TIPS group than in the No TIPS group. This interaction blurs the effect of TIPS on ACLF incidence in univariate analyses.

Not all ACLFs in the TIPS group can be attributed to TIPS. The majority of the ACLFs occurred already before TIPS placement and many patients already had at least an ACLF grade 1 on hospital admission. ACLFs grade 1 were almost exclusively due to renal failure. This was to be expected in patients with recurrent tense ascites. Patients whose ACLF increased by 2 or 3 grades during hospital stay had a particularly poor outcome in both groups. A serious deterioration of liver function after TIPS placement is often attributed to TIPS placement. In our patients such events occurred in both groups when we considered the entire hospital stay (No TIPS group 5/214 patients, TIPS group 10/214 patients). Some of the ACLFs after TIPS placement are likely due to other causes than TIPS, such as bacterial infections or gastrointestinal bleeding. Such events precede most ACLFs and can occur with and without TIPS placement[29]. In line with that, TIPS was not a precipitant of ACLF in a recently published study on acute decompensation and ACLF[28]. Furthermore, the majority of pre-TIPS ACLFs resolved after TIPS placement, suggesting that TIPS is more capable to overcome an ACLF than causing it. We have studied patients with recurrent tense ascites. The most common cause of ACLF within this group was kidney failure. It is plausible that a TIPS can improve such an ACLF, *e.g.*, since dose of diuretics can be lowered or diuretics can be discontinued altogether.

We did not include an analysis of the effect of TIPS on ascites resolution since it typically takes up to several months after TIPS placement for the underlying circulatory, renal and neurohumoral dysfunction to normalize[27]. Therefore, the effect of TIPS placement on ascites cannot be reliably assessed during hospital stay.

When interpreting these results, the limitations of a retrospective analysis have to be considered. Since this is a retrospective study, many patients in the No TIPS group lack data on the further course after hospital discharge. For the selected endpoints (highest ACLF during inpatient stay, death during inpatient stay), complete data are available in both groups. Therefore, we had to limit the analysis to inpatient stay. In this study propensity score matching was used prior to comparing the TIPS and No TIPS group. However, even with propensity score matching, a similar distribution of unknown confounders cannot be guaranteed. We only evaluated the short-term outcome during hospital stay. It is well known that the positive impact of a TIPS only takes effect after a few weeks to months[23,27]. In fact, some studies have observed an increased mortality after TIPS placement during the first few weeks

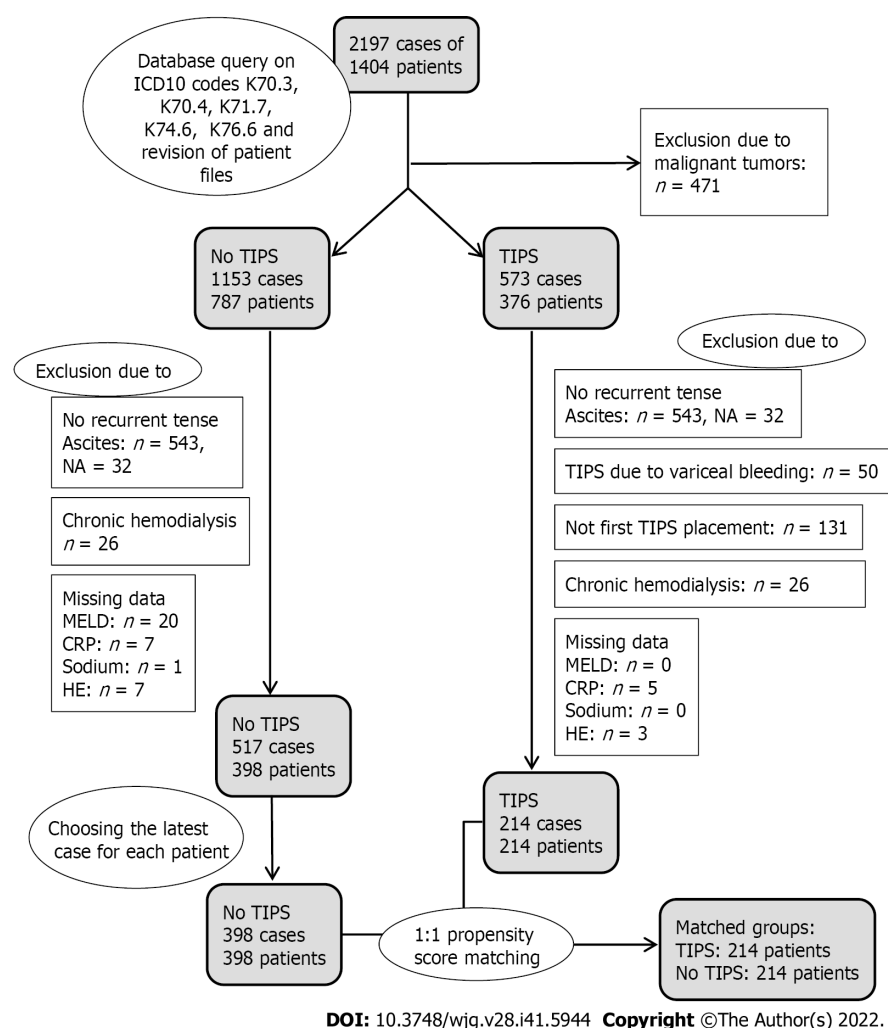


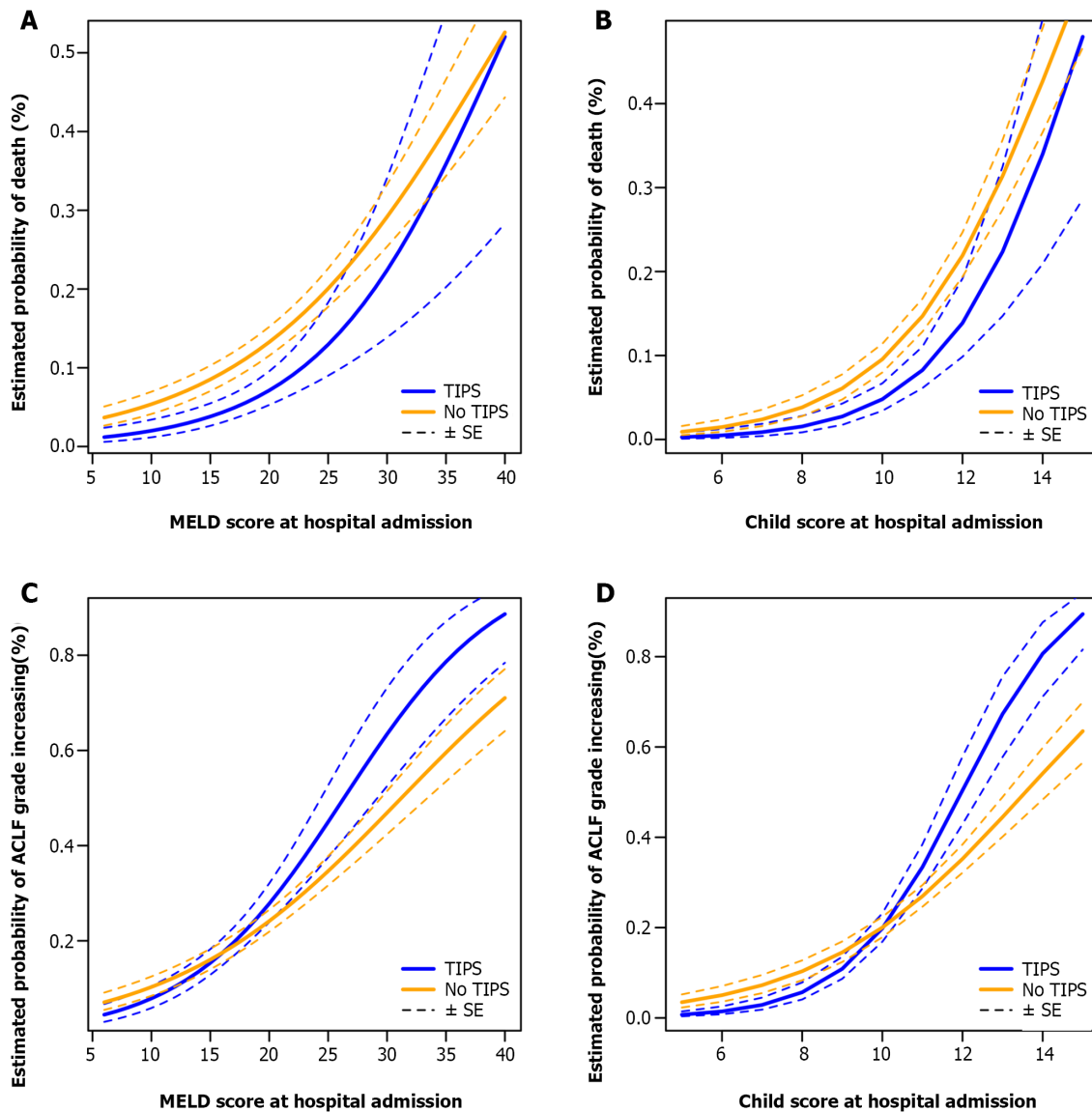
Figure 1 Flow diagram showing the study population and reasons for exclusion from data analysis. HE: Hepatic encephalopathy; NA: Not available; TIPS: Transjugular intrahepatic portosystemic shunt.

[24,30]. Therefore, positive effects of TIPS on survival might be underestimated. On the other hand, our results were confirmed and extended by the multivariate logistic regressions (Table 5). The multivariate logistic regression also provided insight into the complex interactions between liver function and TIPS as seen in Figure 2.

Some ACLFs were already present on admission, some occurred before TIPS, and some ACLFs improved after TIPS. The fact that some patients already had ACLF prior to TIPS complicates the interpretation of the relationship between TIPS and ACLF. As in all retrospective studies, conclusions about the causal relationship between ACLF and TIPS are impossible. Furthermore, we cannot analyze systematically why TIPS was chosen in some patients and not in others. We can only compare the clinical outcome of both groups after very careful propensity score matching.

Our TIPS patients had a comparatively poor liver function, but a bilirubin of 85.5 $\mu\text{mol/L}$ or a MELD of 24 points was rarely exceeded (approx. 8% and 6% of patients). In addition, in patients with very high MELD scores on hospital admission, TIPS placement was performed only after initial stabilization and after MELD had improved. Since the number of observations in our study is limited for this situation, a decision for TIPS placement should be made with caution in such patients. Nevertheless, as shown in Figure 2 and in accordance with other studies the mortality in the TIPS group is not higher than in the No TIPS group even at the highest MELD and Child scores[17,31-33].

Our data show an increased risk of ACLF in the TIPS group in patients with severely impaired liver function (Child ≥ 11 points), but not in patients with good or moderately impaired liver function. These findings may explain why TIPS is often considered a risky intervention with potentially unfavorable outcomes in patients with high MELD or Child scores. Nevertheless, we did not find such a negative effect of TIPS placement on in-hospital mortality in patients with high to very high MELD and Child scores. We found that many ACLFs in the TIPS group occurred before TIPS placement and often resolved after TIPS placement. Unlike several previous RCTs we did not find a positive effect of TIPS on mortality. Possible reasons are the comparatively short follow-up and the significantly worse liver function of our TIPS patients compared to the patients in the RCTs. In the presence of moderately to



DOI: 10.3748/wjg.v28.i41.5944 Copyright ©The Author(s) 2022.

Figure 2 Estimated in-hospital mortality and risk of acute on chronic liver failure depending on liver function. A and B: Estimated probability of dying in hospital depending on liver function at hospital admission; C and D: Estimated probability of acute on chronic liver failure (ACLF) occurring or existing ACLF worsening, depending on liver function at hospital admission. All probabilities were estimated using a multivariate logistic regression model based on the MELD and Child scores at hospital admission. TIPS: Transjugular intrahepatic portosystemic shunt.

severely impair liver function recurrent tense ascites may be a dominant symptom. TIPS is the most effective therapy for recurrent tense ascites. Therefore, we conclude that TIPS is a viable option not only for patients with good liver function but also for patients with high Child scores after carefully weighing the increased risk of ACLF against the expected benefits.

CONCLUSION

TIPS placement for recurrent tense ascites is associated with an increased incidence of ACLF. This effect occurs only in patients with severely impaired liver function (Child score ≥ 11) and does not lead to a higher in-hospital mortality compared with conservative treatment.

ARTICLE HIGHLIGHTS

Research background

Transjugular intrahepatic portosystemic shunt (TIPS) is an effective treatment for recurrent tense ascites.

Acute on chronic liver failure (ACLF) of various severities is a serious complication usually causally attributed to TIPS placement. But the potential of TIPS to improve ACLF grade 1 and 2, which is mostly related to acute kidney injury in these patients, may be underestimated.

Research motivation

TIPS placement for recurrent tense ascites may be beneficial even in patients with severely impaired liver and kidney function. But the exact medical limits need further clarification.

Research objectives

To retrospectively evaluate the in-hospital mortality of patients with recurrent tense ascites and reduced liver function-including severely reduced liver function-undergoing TIPS placement (TIPS group) and to compare these data to a carefully matched cohort with recurrent tense ascites receiving conservative treatment (No TIPS group). To better address the clinical scenario not only the time after TIPS placement but the entire hospital stays was analyzed.

Research methods

Two hundred and twenty-four patients undergoing TIPS placement for recurrent tense ascites were retrospectively compared to an equal number of propensity score matched, conservatively treated patients. Primary objectives were in-hospital mortality and the development or worsening or improvement of ACLF. Additional multivariate logistic regressions were performed as sensitivity analysis and for further insights into effects of liver function, TIPS placement and their interaction on ACLF incidence and in-hospital mortality.

Research results

TIPS placement did not result in an increased in-hospital mortality compared to the matched cohort. ACLF incidence in the TIPS group depended on liver function: At Child-Pugh-Scores < 8 TIPS reduced the risk of ALCF development, at scores of 8 to 10 ACLF risk did not differ between TIPS and No TIPS, and at scores ≥ 11 TIPS increased the risk of ALCF. Many preexisting ACLFs grade 1 resolved after TIPS placement. The relevant prognostic parameters for this need further elucidation. The data point to a biologic interaction of liver function and TIPS placement with regard to the development of ACLF, which needs further evaluation.

Research conclusions

In selected patients with severely impaired liver function TIPS placement does not result in an increased in-hospital mortality compared to conservatively treated patients. TIPS was associated with ALCF only in patients with severely impaired liver function (Child > 11 points).

Research perspectives

The medical limits of TIPS placement for recurrent tense ascites should be evaluated in prospective studies which need to address the indications, contraindications and the associated complex decision making.

FOOTNOTES

Author contributions: Philipp M, Blattmann T, Bienert J, Fischer K, and Hausberg L designed the research study and acquired the data; Philipp M and Lamprecht G analyzed the data and wrote the manuscript; Kröger JC, Heller T, and Weber MA performed transjugular intrahepatic portosystemic shunt placement and critically revised the manuscript; all authors have read and have approved the final manuscript.

Institutional review board statement: The study was reviewed and approved by the Institutional Review Board of Rostock University Medical Center (Approval No. A2018-0127).

Informed consent statement: The requirement for informed consent was waived by the Institutional Review Board considering the retrospective design of the study. Nevertheless, informed consent was obtained from all available patients.

Conflict-of-interest statement: There are no conflicts of interest to report.

Data sharing statement: De-identified data and statistical code used in this study are available from the corresponding author upon reasonable request.

Open-Access: This article is an open-access article that was selected by an in-house editor and fully peer-reviewed by external reviewers. It is distributed in accordance with the Creative Commons Attribution NonCommercial (CC BY-NC 4.0) license, which permits others to distribute, remix, adapt, build upon this work non-commercially, and license

their derivative works on different terms, provided the original work is properly cited and the use is non-commercial. See: <https://creativecommons.org/licenses/by-nc/4.0/>

Country/Territory of origin: Germany

ORCID number: Martin Philipp 0000-0001-6189-2119; Theresia Blattmann 0000-0001-7841-4818; Jörn Bienert 0000-0003-1309-116X; Kristian Fischer 0000-0001-8664-1391; Luisa Hausberg 0000-0001-7974-5184; Jens-Christian Kröger 0000-0002-1505-3485; Thomas Heller 0000-0001-5730-7060; Marc-André Weber 0000-0003-3918-8066; Georg Lamprecht 0000-0003-0997-3135.

S-Editor: Chen YL

L-Editor: A

P-Editor: Chen YL

REFERENCES

- 1 **Lebrech D**, Giuily N, Hadengue A, Vilgrain V, Moreau R, Poynard T, Gadano A, Lassen C, Benhamou JP, Erlinger S. Transjugular intrahepatic portosystemic shunts: comparison with paracentesis in patients with cirrhosis and refractory ascites: a randomized trial. French Group of Clinicians and a Group of Biologists. *J Hepatol* 1996; **25**: 135-144 [PMID: 8878773 DOI: 10.1016/s0168-8278(96)80065-1]
- 2 **Ginès P**, Uriz J, Calahorra B, Garcia-Tsao G, Kamath PS, Del Arbol LR, Planas R, Bosch J, Arroyo V, Rodés J. Transjugular intrahepatic portosystemic shunting versus paracentesis plus albumin for refractory ascites in cirrhosis. *Gastroenterology* 2002; **123**: 1839-1847 [PMID: 12454841 DOI: 10.1053/gast.2002.37073]
- 3 **Sanyal AJ**, Genning C, Reddy KR, Wong F, Kowdley KV, Benner K, McCashland T; North American Study for the Treatment of Refractory Ascites Group. The North American Study for the Treatment of Refractory Ascites. *Gastroenterology* 2003; **124**: 634-641 [PMID: 12612902 DOI: 10.1053/gast.2003.50088]
- 4 **Rössle M**, Ochs A, Gülberg V, Siegerstetter V, Holl J, Deibert P, Olschewski M, Reiser M, Gerbes AL. A comparison of paracentesis and transjugular intrahepatic portosystemic shunting in patients with ascites. *N Engl J Med* 2000; **342**: 1701-1707 [PMID: 10841872 DOI: 10.1056/NEJM200006083422303]
- 5 **Salerno F**, Merli M, Riggio O, Cazzaniga M, Valeriano V, Pozzi M, Nicolini A, Salvatori F. Randomized controlled study of TIPS versus paracentesis plus albumin in cirrhosis with severe ascites. *Hepatology* 2004; **40**: 629-635 [PMID: 15349901 DOI: 10.1002/hep.20364]
- 6 **Narahara Y**, Kanazawa H, Fukuda T, Matsushita Y, Harimoto H, Kidokoro H, Katakura T, Atsukawa M, Taki Y, Kimura Y, Nakatsuka K, Sakamoto C. Transjugular intrahepatic portosystemic shunt versus paracentesis plus albumin in patients with refractory ascites who have good hepatic and renal function: a prospective randomized trial. *J Gastroenterol* 2011; **46**: 78-85 [PMID: 20632194 DOI: 10.1007/s00535-010-0282-9]
- 7 **Bureau C**, Thabut D, Oberti F, Dharancy S, Carbonell N, Bouvier A, Mathurin P, Otal P, Cabarrou P, Péron JM, Vinel JP. Transjugular Intrahepatic Portosystemic Shunts With Covered Stents Increase Transplant-Free Survival of Patients With Cirrhosis and Recurrent Ascites. *Gastroenterology* 2017; **152**: 157-163 [PMID: 27663604 DOI: 10.1053/j.gastro.2016.09.016]
- 8 **Allegretti AS**, Ortiz G, Cui J, Wenger J, Bhan I, Chung RT, Thadhani RI, Irani Z. Changes in Kidney Function After Transjugular Intrahepatic Portosystemic Shunts Versus Large-Volume Paracentesis in Cirrhosis: A Matched Cohort Analysis. *Am J Kidney Dis* 2016; **68**: 381-391 [PMID: 26994685 DOI: 10.1053/j.ajkd.2016.02.041]
- 9 **Busk TM**, Bendtsen F, Poulsen JH, Clemmesen JO, Larsen FS, Goetze JP, Iversen JS, Jensen MT, Møgelvang R, Pedersen EB, Bech JN, Møller S. Transjugular intrahepatic portosystemic shunt: impact on systemic hemodynamics and renal and cardiac function in patients with cirrhosis. *Am J Physiol Gastrointest Liver Physiol* 2018; **314**: G275-G286 [PMID: 29074483 DOI: 10.1152/ajpgi.00094.2017]
- 10 **Campbell MS**, Brensinger CM, Sanyal AJ, Gennings C, Wong F, Kowdley KV, McCashland T, Reddy KR. Quality of life in refractory ascites: transjugular intrahepatic portal-systemic shunting versus medical therapy. *Hepatology* 2005; **42**: 635-640 [PMID: 16108073 DOI: 10.1002/hep.20840]
- 11 **Gülberg V**, Liss I, Bilzer M, Waggesshauser T, Reiser M, Gerbes AL. Improved quality of life in patients with refractory or recidivant ascites after insertion of transjugular intrahepatic portosystemic shunts. *Digestion* 2002; **66**: 127-130 [PMID: 12428073 DOI: 10.1159/000065593]
- 12 **European Association for the Study of the Liver**. EASL Clinical Practice Guidelines for the management of patients with decompensated cirrhosis. *J Hepatol* 2018; **69**: 406-460 [PMID: 29653741 DOI: 10.1016/j.jhep.2018.03.024]
- 13 **Aithal GP**, Palaniyappan N, China L, Härmälä S, Macken L, Ryan JM, Wilkes EA, Moore K, Leithead JA, Hayes PC, O'Brien AJ, Verma S. Guidelines on the management of ascites in cirrhosis. *Gut* 2021; **70**: 9-29 [PMID: 33067334 DOI: 10.1136/gutjnl-2020-321790]
- 14 **Bettinger D**, Schultheiss M, Boettler T, Muljono M, Thimme R, Rössle M. Procedural and shunt-related complications and mortality of the transjugular intrahepatic portosystemic shunt (TIPSS). *Aliment Pharmacol Ther* 2016; **44**: 1051-1061 [PMID: 27670147 DOI: 10.1111/apt.13809]
- 15 **Luca A**, Miraglia R, Maruzzelli L, D'Amico M, Tuzzolino F. Early Liver Failure after Transjugular Intrahepatic Portosystemic Shunt in Patients with Cirrhosis with Model for End-Stage Liver Disease Score of 12 or Less: Incidence, Outcome, and Prognostic Factors. *Radiology* 2016; **280**: 622-629 [PMID: 26982564 DOI: 10.1148/radiol.2016151625]
- 16 **Moreau R**, Jalan R, Gines P, Pavesi M, Angeli P, Cordoba J, Durand F, Gustot T, Saliba F, Domenicali M, Gerbes A, Wendon J, Alessandria C, Laleman W, Zeuzem S, Trebicka J, Bernardi M, Arroyo V; CANONIC Study Investigators of the

- EASL-CLIF Consortium. Acute-on-chronic liver failure is a distinct syndrome that develops in patients with acute decompensation of cirrhosis. *Gastroenterology* 2013; **144**: 1426-1437, 1437.e1 [PMID: [23474284](#) DOI: [10.1053/j.gastro.2013.02.042](#)]
- 17 **Ronald J**, Rao R, Choi SS, Kappus M, Martin JG, Sag AA, Pabon-Ramos WM, Suhocki PV, Smith TP, Kim CY. No Increased Mortality After TIPS Compared with Serial Large Volume Paracenteses in Patients with Higher Model for End-Stage Liver Disease Score and Refractory Ascites. *Cardiovasc Intervent Radiol* 2019; **42**: 720-728 [PMID: [30603968](#) DOI: [10.1007/s00270-018-02155-9](#)]
- 18 **Boike JR**, Thornburg BG, Asrani SK, Fallon MB, Fortune BE, Izzy MJ, Verna EC, Abraldes JG, Allegretti AS, Bajaj JS, Biggins SW, Darcy MD, Farr MA, Farsad K, Garcia-Tsao G, Hall SA, Jadhaw CC, Krowka MJ, Laberge J, Lee EW, Mulligan DC, Nadim MK, Northup PG, Salem R, Shatzel JJ, Shaw CJ, Simonetto DA, Susman J, Kolli KP, VanWagner LB; Advancing Liver Therapeutic Approaches (ALTA) Consortium. North American Practice-Based Recommendations for Transjugular Intrahepatic Portosystemic Shunts in Portal Hypertension. *Clin Gastroenterol Hepatol* 2022; **20**: 1636-1662.e36 [PMID: [34274511](#) DOI: [10.1016/j.cgh.2021.07.018](#)]
- 19 **Dean CB**, Nielsen JD. Generalized linear mixed models: a review and some extensions. *Lifetime Data Anal* 2007; **13**: 497-512 [PMID: [18000755](#) DOI: [10.1007/s10985-007-9065-x](#)]
- 20 **Ho DE**, Imai K, King G, Stuart EA. MatchIt: Nonparametric Preprocessing for Parametric Causal Inference. *J Stat Softw* 2011; **42** [DOI: [10.18637/jss.v042.i08](#)]
- 21 **Austin PC**. An Introduction to Propensity Score Methods for Reducing the Effects of Confounding in Observational Studies. *Multivariate Behav Res* 2011; **46**: 399-424 [PMID: [21818162](#) DOI: [10.1080/00273171.2011.568786](#)]
- 22 **Tabachnick BG**, Fidell LS. Using Multivariate Statistics. 6th ed. Harlow, Essex: Pearson Education 2014: 516 [DOI: [10.1207/s15328007sem0904_9](#)]
- 23 **Rössle M**. TIPS: 25 years later. *J Hepatol* 2013; **59**: 1081-1093 [PMID: [23811307](#) DOI: [10.1016/j.jhep.2013.06.014](#)]
- 24 **Gaba RC**, Parvinian A, Casadaban LC, Couture PM, Zivin SP, Lakhoo J, Minocha J, Ray CE Jr, Knuttinen MG, Bui JT. Survival benefit of TIPS versus serial paracentesis in patients with refractory ascites: a single institution case-control propensity score analysis. *Clin Radiol* 2015; **70**: e51-e57 [PMID: [25758602](#) DOI: [10.1016/j.crad.2015.02.002](#)]
- 25 **Montgomery A**, Ferral H, Vasan R, Postoak DW. MELD score as a predictor of early death in patients undergoing elective transjugular intrahepatic portosystemic shunt (TIPS) procedures. *Cardiovasc Intervent Radiol* 2005; **28**: 307-312 [PMID: [15886944](#) DOI: [10.1007/s00270-004-0145-y](#)]
- 26 **Burgos AC**, Thornburg B. Transjugular Intrahepatic Portosystemic Shunt Placement for Refractory Ascites: Review and Update of the Literature. *Semin Intervent Radiol* 2018; **35**: 165-168 [PMID: [30087519](#) DOI: [10.1055/s-0038-1661347](#)]
- 27 **Rössle M**, Gerbes AL. TIPS for the treatment of refractory ascites, hepatorenal syndrome and hepatic hydrothorax: a critical update. *Gut* 2010; **59**: 988-1000 [PMID: [20581246](#) DOI: [10.1136/gut.2009.193227](#)]
- 28 **Trebicka J**, Fernandez J, Papp M, Caraceni P, Laleman W, Gambino C, Giovo I, Uschner FE, Jansen C, Jimenez C, Mookerjee R, Gustot T, Albillos A, Bañares R, Jarcuska P, Steib C, Reiberger T, Acevedo J, Gatti P, Shawcross DL, Zeuzem S, Zipprich A, Piano S, Berg T, Bruns T, Danielsen KV, Coenraad M, Merli M, Stauber R, Zoller H, Ramos JP, Solé C, Soriano G, de Gottardi A, Gronbaek H, Saliba F, Trautwein C, Kani HT, Francque S, Ryder S, Nahon P, Romero-Gomez M, Van Vlierberghe H, Francoz C, Manns M, Garcia-Lopez E, Tufoni M, Amoros A, Pavesi M, Sanchez C, Praktiknjo M, Curto A, Pitarch C, Putignano A, Moreno E, Bernal W, Aguilar F, Clària J, Ponzo P, Vitalis Z, Zaccherini G, Balogh B, Gerbes A, Vargas V, Alessandria C, Bernardi M, Ginès P, Moreau R, Angeli P, Jalan R, Arroyo V; PREDICT STUDY group of the EASL-CLIF CONSORTIUM. PREDICT identifies precipitating events associated with the clinical course of acutely decompensated cirrhosis. *J Hepatol* 2021; **74**: 1097-1108 [PMID: [33227350](#) DOI: [10.1016/j.jhep.2020.11.019](#)]
- 29 **Arroyo V**, Angeli P, Moreau R, Jalan R, Clària J, Trebicka J, Fernández J, Gustot T, Caraceni P, Bernardi M; investigators from the EASL-CLIF Consortium, Grifols Chair and European Foundation for the Study of Chronic Liver Failure (EF-Clif). The systemic inflammation hypothesis: Towards a new paradigm of acute decompensation and multiorgan failure in cirrhosis. *J Hepatol* 2021; **74**: 670-685 [PMID: [33301825](#) DOI: [10.1016/j.jhep.2020.11.048](#)]
- 30 **Ascha M**, Hanouneh M, S Ascha M, Zein NN, Sands M, Lopez R, Hanouneh IA. Transjugular Intrahepatic Porto-Systemic Shunt in Patients with Liver Cirrhosis and Model for End-Stage Liver Disease ≥ 15 . *Dig Dis Sci* 2017; **62**: 534-542 [PMID: [27154510](#) DOI: [10.1007/s10620-016-4185-3](#)]
- 31 **Salerno F**, Cammà C, Enea M, Rössle M, Wong F. Transjugular intrahepatic portosystemic shunt for refractory ascites: a meta-analysis of individual patient data. *Gastroenterology* 2007; **133**: 825-834 [PMID: [17678653](#) DOI: [10.1053/j.gastro.2007.06.020](#)]
- 32 **Spengler EK**, Hunsicker LG, Zarei S, Zimmerman MB, Voigt MD. Transjugular intrahepatic portosystemic shunt does not independently increase risk of death in high model for end stage liver disease patients. *Hepatol Commun* 2017; **1**: 460-468 [PMID: [29404473](#) DOI: [10.1002/hep4.1053](#)]
- 33 **Alessandria C**, Gaia S, Marzano A, Venon WD, Fadda M, Rizzetto M. Application of the model for end-stage liver disease score for transjugular intrahepatic portosystemic shunt in cirrhotic patients with refractory ascites and renal impairment. *Eur J Gastroenterol Hepatol* 2004; **16**: 607-612 [PMID: [15167164](#) DOI: [10.1097/00042737-200406000-00015](#)]



Published by **Baishideng Publishing Group Inc**
7041 Koll Center Parkway, Suite 160, Pleasanton, CA 94566, USA

Telephone: +1-925-3991568

E-mail: bpgoffice@wjgnet.com

Help Desk: <https://www.f6publishing.com/helpdesk>

<https://www.wjgnet.com>

