

# World Journal of *Gastroenterology*

*World J Gastroenterol* 2022 November 28; 28(44): 6206-6313



## EDITORIAL

- 6206 Medical imaging for pancreatic diseases: Prediction of severe acute pancreatitis complicated with acute respiratory distress syndrome  
*Song LJ, Xiao B*

## REVIEW

- 6213 Role of intestinal flora in primary sclerosing cholangitis and its potential therapeutic value  
*Li ZJ, Gou HZ, Zhang YL, Song XJ, Zhang L*
- 6230 Machine learning insights concerning inflammatory and liver-related risk comorbidities in non-communicable and viral diseases  
*Martínez JA, Alonso-Bernáldez M, Martínez-Urbistondo D, Vargas-Núñez JA, Ramírez de Molina A, Dávalos A, Ramos-Lopez O*

## MINIREVIEWS

- 6249 Development of Epstein-Barr virus-associated gastric cancer: Infection, inflammation, and oncogenesis  
*Iizasa H, Kartika AV, Fekadu S, Okada S, Onomura D, Wadi AFAA, Khatun MM, Moe TM, Nishikawa J, Yoshiyama H*
- 6258 Glucagon-like peptide-2 analogues for Crohn's disease patients with short bowel syndrome and intestinal failure  
*Pizzoferrato M, Puca P, Ennas S, Cammarota G, Guidi L*

## ORIGINAL ARTICLE

## Retrospective Study

- 6271 Postoperative outcomes and recurrence patterns of intermediate-stage hepatocellular carcinoma dictated by the sum of tumor size and number  
*Hu XS, Yang HY, Leng C, Zhang ZW*

## Observational Study

- 6282 Virological and histological evaluation of intestinal samples in COVID-19 patients  
*Cuicchi D, Gabrielli L, Tardio ML, Rossini G, D'Errico A, Viale P, Lazzarotto T, Poggioli G*

## Randomized Controlled Trial

- 6294 Randomized controlled trial to evaluate the efficacy and safety of fexuprazan compared with esomeprazole in erosive esophagitis  
*Lee KN, Lee OY, Chun HJ, Kim JJ, Kim SK, Lee SW, Park KS, Lee KL, Choi SC, Jang JY, Kim GH, Sung IK, Park MI, Kwon JG, Kim N, Kim JJ, Lee ST, Kim HS, Kim KB, Lee YC, Choi MG, Lee JS, Jung HY, Lee KJ, Kim JH, Chung H*

**LETTER TO THE EDITOR**

- 6310** Comment on “Prognostic value of preoperative enhanced computed tomography as a quantitative imaging biomarker in pancreatic cancer”

*Yang J, Liu Y, Liu S*

**ABOUT COVER**

Editorial Board of *World Journal of Gastroenterology*, Minoti V Apte, OAM, MBBS MMEDSci PhD, AGAF, FAHMS, FGESA, Professor of Medicine, Director Pancreatic Research Group, South Western Sydney Clinical Campuses, School of Clinical Medicine, UNSW Medicine and Health, University of New South Wales, Sydney 2050, and Ingham Institute for Applied Medical Research, Sydney 2170, New South Wales, Australia. m.apte@unsw.edu.au

**AIMS AND SCOPE**

The primary aim of *World Journal of Gastroenterology* (WJG, *World J Gastroenterol*) is to provide scholars and readers from various fields of gastroenterology and hepatology with a platform to publish high-quality basic and clinical research articles and communicate their research findings online. WJG mainly publishes articles reporting research results and findings obtained in the field of gastroenterology and hepatology and covering a wide range of topics including gastroenterology, hepatology, gastrointestinal endoscopy, gastrointestinal surgery, gastrointestinal oncology, and pediatric gastroenterology.

**INDEXING/ABSTRACTING**

The WJG is now abstracted and indexed in Science Citation Index Expanded (SCIE, also known as SciSearch®), Current Contents/Clinical Medicine, Journal Citation Reports, Index Medicus, MEDLINE, PubMed, PubMed Central, Scopus, Reference Citation Analysis, China National Knowledge Infrastructure, China Science and Technology Journal Database, and Superstar Journals Database. The 2022 edition of Journal Citation Reports® cites the 2021 impact factor (IF) for WJG as 5.374; IF without journal self cites: 5.187; 5-year IF: 5.715; Journal Citation Indicator: 0.84; Ranking: 31 among 93 journals in gastroenterology and hepatology; and Quartile category: Q2. The WJG's CiteScore for 2021 is 8.1 and Scopus CiteScore rank 2021: Gastroenterology is 18/149.

**RESPONSIBLE EDITORS FOR THIS ISSUE**

Production Editor: *Yu-Xi Chen*; Production Department Director: *Xu Guo*; Editorial Office Director: *Jia-Ru Fan*.

**NAME OF JOURNAL**

*World Journal of Gastroenterology*

**ISSN**

ISSN 1007-9327 (print) ISSN 2219-2840 (online)

**LAUNCH DATE**

October 1, 1995

**FREQUENCY**

Weekly

**EDITORS-IN-CHIEF**

Andrzej S Tarnawski

**EDITORIAL BOARD MEMBERS**

<http://www.wjgnet.com/1007-9327/editorialboard.htm>

**PUBLICATION DATE**

November 28, 2022

**COPYRIGHT**

© 2022 Baishideng Publishing Group Inc

**INSTRUCTIONS TO AUTHORS**

<https://www.wjgnet.com/bpg/gerinfo/204>

**GUIDELINES FOR ETHICS DOCUMENTS**

<https://www.wjgnet.com/bpg/GerInfo/287>

**GUIDELINES FOR NON-NATIVE SPEAKERS OF ENGLISH**

<https://www.wjgnet.com/bpg/gerinfo/240>

**PUBLICATION ETHICS**

<https://www.wjgnet.com/bpg/GerInfo/288>

**PUBLICATION MISCONDUCT**

<https://www.wjgnet.com/bpg/gerinfo/208>

**ARTICLE PROCESSING CHARGE**

<https://www.wjgnet.com/bpg/gerinfo/242>

**STEPS FOR SUBMITTING MANUSCRIPTS**

<https://www.wjgnet.com/bpg/GerInfo/239>

**ONLINE SUBMISSION**

<https://www.f6publishing.com>



## Development of Epstein-Barr virus-associated gastric cancer: Infection, inflammation, and oncogenesis

Hisashi Iizasa, Andy Visi Kartika, Sintayehu Fekadu, Shunpei Okada, Daichi Onomura, Afifah Fatimah Azzahra Ahmad Wadi, Mosammat Mahmuda Khatun, Thin Myat Moe, Jun Nishikawa, Hironori Yoshiyama

**Specialty type:** Gastroenterology and hepatology

**Provenance and peer review:** Invited article; Externally peer reviewed.

**Peer-review model:** Single blind

**Peer-review report's scientific quality classification**

Grade A (Excellent): A

Grade B (Very good): 0

Grade C (Good): C

Grade D (Fair): 0

Grade E (Poor): 0

**P-Reviewer:** Cheng H, China; Liao J, China

**Received:** September 9, 2022

**Peer-review started:** September 9, 2022

**First decision:** September 29, 2022

**Revised:** October 24, 2022

**Accepted:** November 9, 2022

**Article in press:** November 9, 2022

**Published online:** November 28, 2022



**Hisashi Iizasa, Andy Visi Kartika, Sintayehu Fekadu, Shunpei Okada, Daichi Onomura, Afifah Fatimah Azzahra Ahmad Wadi, Mosammat Mahmuda Khatun, Thin Myat Moe, Hironori Yoshiyama,** Department of Microbiology, Shimane University Faculty of Medicine, Izumo 693-8501, Shimane, Japan

**Andy Visi Kartika,** Faculty of Medicine, Muslim University of Indonesia, Makassar 90231, Indonesia

**Sintayehu Fekadu,** Department of Medical Microbiology and Parasitology, Hawassa University, College of Medicine and Health Science, Hawassa 1560, Ethiopia

**Jun Nishikawa,** Faculty of Laboratory Science, Yamaguchi University Graduate School of Medicine, Ube 755-8505, Japan

**Corresponding author:** Hironori Yoshiyama, MD, PhD, Professor, Department of Microbiology, Shimane University Faculty of Medicine, 89-1 Enyacho, Izumo 693-8501, Shimane, Japan. [yoshiyama@med.shimane-u.ac.jp](mailto:yoshiyama@med.shimane-u.ac.jp)

### Abstract

Epstein-Barr virus (EBV)-associated gastric cancer (EBVaGC) cells originate from a single-cell clone infected with EBV. However, more than 95% of patients with gastric cancer have a history of *Helicobacter pylori* (*H. pylori*) infection, and *H. pylori* is a major causative agent of gastric cancer. Therefore, it has long been argued that *H. pylori* infection may affect the development of EBVaGC, a subtype of gastric cancer. Atrophic gastrointestinal inflammation, a symptom of *H. pylori* infection, is observed in the gastric mucosa of EBVaGC. Therefore, it remains unclear whether *H. pylori* infection is a cofactor for gastric carcinogenesis caused by EBV infection or whether *H. pylori* and EBV infections act independently on gastric cancer formation. It has been reported that EBV infection assists in the oncogenesis of gastric cancer caused by *H. pylori* infection. In contrast, several studies have reported that *H. pylori* infection accelerates tumorigenesis initiated by EBV infection. By reviewing both clinical epidemiological and experimental data, we reorganized the role of *H. pylori* and EBV infections in gastric cancer formation.

**Key Words:** *Helicobacter pylori*; Epstein-Barr virus; Epstein-Barr virus-associated gastric cancer; Coreceptor; Inflammation; Oncogenesis

**Core Tip:** Epstein-Barr virus (EBV)-associated gastric cancer (EBVaGC) tumor cells originate from a single cell clone infected with EBV. In contrast, it is reported that more than 95% of patients with gastric cancer have a history of *Helicobacter pylori* (*H. pylori*) infection. Accordingly, it has long been argued that *H. pylori* infection may have some effect on the development of EBVaGC, a subtype of gastric cancer. It is also a mystery that the number of gastric cancer patients is higher in Asia, South America, and the Middle East. We will reorganize the role of *H. pylori* and EBV infections in gastric cancer formation.

**Citation:** Iizasa H, Kartika AV, Fekadu S, Okada S, Onomura D, Wadi AFAA, Khatun MM, Moe TM, Nishikawa J, Yoshiyama H. Development of Epstein-Barr virus-associated gastric cancer: Infection, inflammation, and oncogenesis. *World J Gastroenterol* 2022; 28(44): 6249-6257

**URL:** <https://www.wjgnet.com/1007-9327/full/v28/i44/6249.htm>

**DOI:** <https://dx.doi.org/10.3748/wjg.v28.i44.6249>

## INTRODUCTION

Epstein-Barr virus (EBV)-associated gastric cancer (EBVaGC) accounts for 10% of all gastric cancers. At the same time, more than 95% of patients with gastric cancer have a history of *Helicobacter pylori* (*H. pylori*) infection. Thus, the question arises as to whether *H. pylori* and EBV infections promote gastric cancer formation in a dependent or independent manner. The high prevalence of gastric cancer in Asia, South America, and the Middle East is also intriguing.

## EBV IS AN ONCOGENIC HUMAN HERPESVIRUS

EBV infects B lymphocytes and epithelial cells and is an oncogenic virus that assists in the proliferation of latently infected cells, resulting in the development of Burkitt lymphoma, Hodgkin lymphoma, nasopharyngeal carcinoma, and EBVaGC[1].

More than 90% of adults are latently infected with EBV; however, cytotoxic T lymphocytes that recognize EBV antigens suppress the proliferation of viral antigen-positive cells. When the local or systemic immune function is compromised, EBV-positive cells begin to proliferate. B lymphocytes that migrate to local areas where immune surveillance is weak often transition to lytic infection, resulting in viral production. Under such conditions, EBV appears to be transmitted to and infects gastric epithelial cells. The expression of EBV genes causes epithelial cells to acquire proliferative properties and resist apoptosis, and cells that escape immunological elimination may begin proliferating[2].

## EBV-ASSOCIATED GASTRIC CANCER

### Molecular features

Classification of gastric cancer by molecular mechanism was performed through an exhaustive analysis of next-generation sequencing data from numerous cases. The results divided gastric cancer into the following four molecular subtypes: Microsatellite instability (MSI), chromosomal instability (CIN), genomically stable (GS), and EBV[3]. These classifications have facilitated the identification of specific therapeutic candidates for each subtype of gastric cancer, and have revealed that each of these four subtypes is driven by a specific developmental mechanism that needs to be clarified individually. In particular, the molecular biology of EBVaGC is characterized by frequent and extensive methylation of the promoter regions of tumor cell genes[4]. *De novo* EBV infection induces DNA methylation in more than 3000 gene promoter regions within 4 wk[4]. However, methylation of the promoter of the mismatch repair gene *MLH1*, which is frequently observed in MSI, is not observed in EBVaGC[5]. In addition to inactivation by DNA methylation, the EBV genome binds to heterochromatin, a region of inactivation that causes aberrant activation of the region (enhancer infestation) and increases the expression of surrounding proto-oncogenes[6].

### Clinical features

In EBVaGC, which accounts for 5%–10% of all gastric cancers, all tumor cells are infected with EBV. Endoscopy is the most informative method for diagnosing gastric cancer. EBVaGC is observed as a superficial depressed lesion in the upper part of the stomach. Using endoscopic biopsy specimens, EBV-



encoded RNA *in situ* hybridization (EBER-ISH), stains all gastric cancer cells positive for EBER, even in the intramucosal cancer stage[7]. The histological hallmark of EBVaGC is lymphoepithelioma-like carcinoma, in which a diffuse lymphocytic infiltrate is observed around EBER-positive epithelial tumor cells[8]. Furthermore, EBVaGC tumor cells are derived from the proliferation of a single EBV-infected epithelial cell[8,9].

Many studies have shown a male predominance (2-fold) of EBVaGC, suggesting that the risk may exist in male lifestyle and occupational factors[10]. The percentage of patients with EBVaGC to those with total gastric cancer is higher in younger patients. In men, the proportion of EBVaGC decreases with increasing age, especially in patients with pyloric gastric cancer. In women, the decrease in the proportion of EBVaGC with increasing age is unclear. Consumption of salty foods that cause mechanical damage to the gastric epithelium as well as exposure to wood and iron filings are associated with a higher EBVaGC risk[11].

EBVaGC is a gastric cancer with a relatively good prognosis. A Dutch study reported that EBVaGC is characterized by fewer lymph node metastases, less residual disease, and younger patient age, which results in longer disease-free survival[12]. Cohort study data from TCGA also reported that EBVaGC has the best recurrence-free period and overall survival compared to MSI, GS, and CIN subtypes[13].

EBVaGC tumors are frequently found in non-antral parts of the stomach[10,14]. In contrast, *H. pylori*-associated gastric cancer mostly occurs in the antral region[10]. Because moderate to severe atrophic gastric mucosa due to *H. pylori* infection was characteristically observed surrounding early gastric cancers, gastritis may play an important role in the tumorigenesis of EBVaGC[14]. Development of gastric cancer is supposed to follow the "infection, inflammation, and carcinogenesis" route, which consists of *H. pylori* infection followed by chronic gastritis, intestinal metaplasia, and cancer. In contrast, in the case of EBVaGC, it is controversial whether tumor formation is initiated by EBV-infected normal mucosal cells or promoted by EBV-infected cells in precancerous lesions[15]. Abe *et al*[16] performed EBER-ISH on 1110 sections of non-neoplastic gastric mucosal tissue from 300 cases and found 2 (0.18%) ductal-level EBER-positive lesions.

The mutual contribution of EBV and *H. pylori* in the carcinogenesis will be discussed later in the chapter "Inflammation and carcinogenesis".

## EBV INFECTION OF EPITHELIAL CELLS

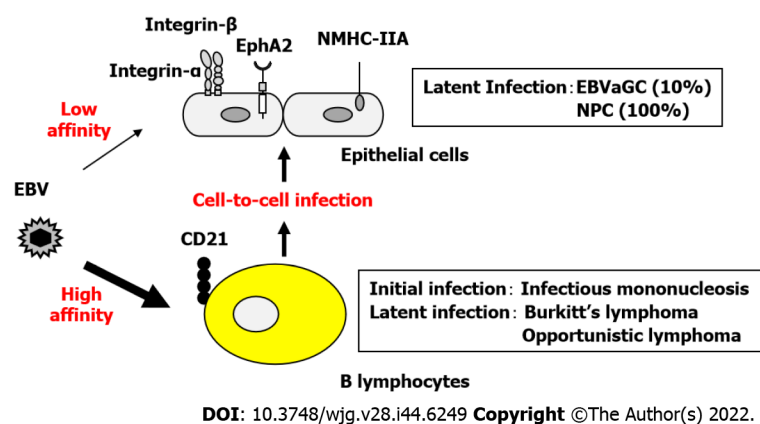
EBV infects B lymphocytes through the binding of the viral glycoprotein gp350 to the high-affinity receptor CD21, followed by binding of gp42 to HLA class II molecules, resulting in membrane fusion [17]. In contrast, when low-affinity co-receptors are used to infect CD21-negative epithelial cells, the infection efficiency is extremely low (Figure 1).

The CD21-independent routes of epithelial cell infection include the following: (1) The viral envelope glycoprotein gp350/220 binds to CD35; (2) Integrins  $\alpha V\beta 5$ ,  $\alpha V\beta 6$ , and  $\alpha V\beta 8$  interact with the viral envelope glycoprotein gH/gL complex to fuse the viral envelope with the epithelial cell membrane; (3) The BMRF2 membrane protein expressed during EBV lytic infection binds to  $\alpha 3$ ,  $\alpha 5$ ,  $\alpha V$ , and  $\beta 1$  integrins; and (4) EphA2 and NMHC-IIA bind to gH/gL produced by many herpesviruses and enhance infection efficiency.

A previous study reported that a boy with X-linked agammaglobulinemia who did not have mature B lymphocytes due to a genetic enzymatic deficiency did not develop an EBV infection[18]. EBV infection of epithelial cells was considered to occur after EBV infection of B lymphocytes because the epithelial cells of the affected boy were intact. EBV-infected B lymphocytes are believed to carry and deliver EBV to the epithelial cells *via* cell-to-cell transfer. In the case of CD21-independent infection, the efficiency of epithelial cell infection by cell-to-cell transfer is more than 1000 times higher than that of direct epithelial cell infection by EBV particles[19]. It is speculated that infection of epithelial cells *via* B lymphocytes is promoted when viral activation and lymphocyte infiltration are accompanied by inflammation (Figure 1).

### EBV-associated gastric cancer-derived cell lines

In EBVaGC, all tumor cells are infected with EBV. However, cell lines established from gastric cancer tissues, similar to those in nasopharyngeal carcinoma, are almost entirely EBV-negative[20]. The EBV genome in EBVaGC tumor cells exists as a plasmid-like episome that does not integrate into the host chromosomes. However, the presence of the virus does not appear to favor cell growth *in vitro*. Rather, it may be more convenient for *in vitro* cell growth to avoid the use of extra energy to maintain the episomes. Alternatively, the expression of viral genes such as microRNAs may be crucial for tumor cells to evade elimination by the *in vivo* immune system. In fact, EBV-positive KT cells established from EBVaGC can only be passaged by transplantation into SCID mice and cannot be expanded in an *in vitro* culture system[21]. SNU-719, YCCCL1, and NCC-24 are rare cells established from EBVaGC and can be propagated *in vitro*. These cell lines appear to be unique because the presence of EBV episomes is essential for their growth. Experiments with hydroxyurea and EBNA1 siRNAs were not successful in shedding the EBV episome from SNU-719 cells[22].



**Figure 1 Epstein-Barr virus infects B lymphocytes and epithelial cells to form tumors.** Epstein-Barr virus (EBV) infects B lymphocytes and epithelial cells via the CD21 receptor and co-receptors, respectively. Although the efficiency of epithelial cell infection is extremely low, approximately 1000000 times lower than that of B lymphocytes, cell-to-cell EBV infection by B lymphocytes increased the efficiency of EBV infection by more than 1000-fold. The squares show the EBV infection status and disease names that are established differently depending on the cell type. EBV: Epstein-Barr virus; EBVaGC: Epstein-Barr virus-associated gastric cancer; NPC: Nasopharyngeal carcinoma.

### Gastric epithelial cell lines infected with recombinant EBV

We established gastric epithelial cells infected with recombinant EBV, where a drug-resistant gene was inserted into the nonessential *BXLF1* (thymidine kinase) gene (Figure 2). It is possible to elucidate the oncogenic molecular mechanism of EBV-infected epithelial cells by comparing EBV-positive cells with EBV-negative cells. EBV infection markedly promotes the proliferation of gastric epithelial cells[23].

EBV-infected gastric epithelial cells also exhibit type I latent infection that expresses EBNA1 and LMP2A, similar to that in EBVaGC *in vivo*. EBNA1 promotes tumorigenesis *via* p53 ubiquitination, suppresses transforming growth factor- $\beta$  signaling, and enhances the transcription of the anti-apoptotic protein survivin[24]. In contrast, LMP2A activates PI3K/Akt signaling similar to that activated by B-cell receptor stimulation, increases survivin expression, and resists apoptosis[25]. LMP2A also induces DNA methyltransferases, resulting in epigenetic changes in infected cells[26]. *BARF1* is strongly expressed as a latent gene in EBV-associated epithelial tumors[27]. Nasopharyngeal carcinoma-derived cells infected with recombinant EBV constitutively expressing *BARF1* exhibit resistance to apoptosis[28].

In addition to the oncogenic activity of EBV proteins expressed in type I latent infections, non-coding RNAs (miRNAs and EBERs) that are not translated into proteins have been investigated. Multiple BART miRNAs cooperatively repress lytic replication[29]. BART miRNAs also downregulate pro- and anti-apoptotic mediators such as caspase 3[30]. EBERs bind to protein kinase R and disrupt innate immune function[31]. Elimination of EBER2 from the EBV genome reduces the efficiency of B lymphocyte transformation[32].

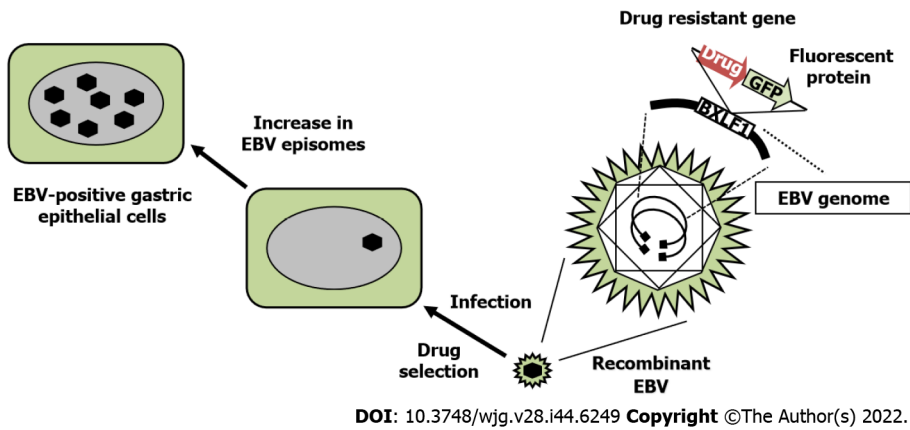
## INFLAMMATION AND CARCINOGENESIS

### Clinical observation

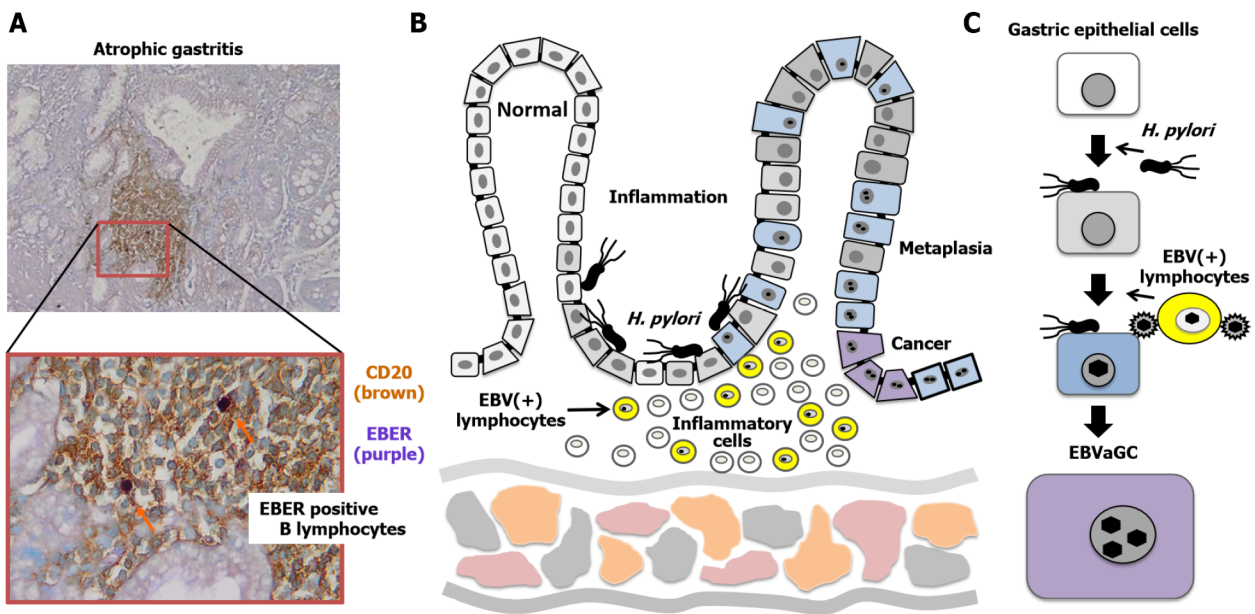
It is very difficult to collect EBVaGC cases without *H. pylori* infection, because most patients with gastric cancer are infected with *H. pylori*[33,34]. However, a clinical study was conducted to investigate the relationship between EBV infection, *H. pylori* infection, and atrophic gastritis in 468 patients with chronic gastritis[35]. This study confirmed that patients who were EBV-positive had a lower pepsinogen I/pepsinogen II ratio than patients who were EBV-negative. EBV infection significantly increases the risk of atrophic gastritis, especially in *H. pylori*-negative patients. However, a report from Mexico mentioned that EBER1 *in situ* hybridization showed that EBV infection of epithelial cells could be detected in gastric cancers as well as in one-third of non-atrophic gastritis samples[36]. This study showed that EBV infection affected early cancer precursor lesions. However, it is difficult to determine whether EBV causes cancer directly or indirectly by triggering inflammation.

Inflammation and initiation of innate immune mechanisms promote EBV activation, although it is difficult to assess the extent to which these mechanisms are involved in tumorigenesis of EBV-infected cells (Figure 3). EBV proliferation occurs at the early stage of EBVaGC formation because early antigens-immunoglobulin G (IgG) and viral capsid antigen-IgG antibodies against early viral antigens and capsids are elevated in the sera of patients with EBVaGC. In addition, while the incidence of EBVaGC is approximately 10% worldwide, the incidence of gastric cancer after surgical invasion by gastric anastomosis increases by three times (30%)[8].





**Figure 2 Isolation of recombinant Epstein-Barr virus-infected gastric epithelial cells.** A drug resistant gene and fluorescent protein gene were inserted into the viral genome (*BXLFI*) using gene recombination technique. *BXLFI* is an EBV gene that does not affect viral production or infectivity by disruption through the insertion of marker genes. It is possible to isolate only recombinant virus-infected cells by infecting cells with a recombinant virus and selecting them for a drug. When recombinant virus-infected cells are cultured in the presence of the drug, the viral plasmid copy number in the nucleus of infected cells increases[52]. EBV: Epstein-Barr virus; GFP: Green fluorescent protein.



**Figure 3 Interaction of *Helicobacter pylori* and Epstein-Barr virus in the formation of Epstein-Barr virus-associated gastric cancer.** A: Infiltration of Epstein-Barr virus (EBV)-infected B lymphocytes in non-tumor areas of EBV-associated gastric cancer. Numerous CD20-positive B lymphocytes infiltrate the submucosal lesions of atrophic gastritis. CD20 is stained brown and EBV-encoded RNA (EBER) is stained purple. EBER-positive B lymphocytes are indicated by arrows. Chronic gastritis in the background is counterstained by Hematoxylin-Eosin staining; B: Induction of inflammatory cytokine production by bacterial adhesion to epithelial cells and tumorigenesis of EBV-infected epithelial cells. *Helicobacter pylori* adhesion induces production of inflammatory cytokines from gastric epithelial cells. Inflammation of gastric mucosa leads to an accumulation of various immune cells. EBV-positive B lymphocytes localized in the submucosa are activated by inflammation and transition from latent to lytic EBV infection. The viral particles produced are transferred to gastric epithelial cells, and the infected epithelial cells eventually form tumors; C: EBV transfer infection and tumorigenesis of epithelial cells via activated EBV-positive B lymphocytes. Infectious viral particles produced during inflammation adhere to CD21-positive B lymphocytes and transferred to epithelial cells expressing EBV coreceptors. Thus, gastric epithelial cells infected with EBV form Epstein-Barr virus-associated gastric cancers over time. EBV: Epstein-Barr virus; EBVaGC: Epstein-Barr virus-associated gastric cancer; *Helicobacter pylori*: *H. pylori*; EBER: EBV-encoded RNA.

Here, we investigated the relationship between *H. pylori*-associated gastritis and EBV propagation in the stomach. Gastric biopsy specimens were collected from patients with chronic atrophic gastritis and categorized into three histopathological stages: Mild, moderate, and severe. The specimens were subjected to DNA extraction and quantitative polymerase chain reaction to quantify EBV genome copy numbers[37]. More than 900 copies of the EBV genome have been frequently detected in patients with moderate atrophic gastritis. In other words, EBV frequently activates proliferation in patients with *H. pylori* infection with moderate chronic atrophic gastritis and strong histological inflammation.

In contrast, EBVaGC is significantly associated with marked mucosal atrophy and moderate to marked lymphocytic infiltration, but there is no direct association with intestinal metaplasia[7]. Although this appears to indicate that EBVaGC is not directly associated with *H. pylori* infection, this result is consistent with our findings. This is because the intestinal metaplastic epithelium resulting from prolonged gastritis is an unsuitable mucosal environment for the growth of both *H. pylori* and EBV [38].

### Experimental observation

Several studies have been investigated the interaction between EBV and *H. pylori* in gastric epithelial cell lines. Because it is difficult to infect the epithelial cells with the two microorganisms simultaneously, experiments have been conducted on sequential infection with EBV first and *H. pylori* second, or vice versa.

Persistent infection of the gastric mucosa by CagA-positive *H. pylori* strains causes gastric cancer. This is because the tyrosine-phosphorylated CagA protein binds to the tyrosine phosphatase SHP2 in gastric epithelial cells, activating *Ras* oncogene. In contrast, SHP1, which competes with SHP2 weakens the oncogenic activity of SHP2. Saju *et al*[39] showed that EBV infection of gastric epithelial cells activates host cell promoter methylation and decreases SHP1 expression[39]. In other words, SHP2 activity is relatively higher and EBV infection promotes carcinogenesis of *H. pylori* associated gastric carcinoma. The induction of DNA methylase by EBV infection in gastric epithelial cells also decreases the expression of tumor suppressor genes such as *APC*, *breast cancer susceptibility gene 1*, and *phosphatase and tensin homolog deleted from chromosome 10 (PTEN)*[40].

Furthermore, activation of innate immune signals by *H. pylori* attachment enhances the expression of the EBV co-receptor EPHA2 in gastric epithelial cells, thereby increasing the frequency of EBV infection in epithelial cells[41]. Another study demonstrated that organoids derived from gastric cancer cells were infected with EBV but did not infect those derived from the normal gastric epithelium[42]. The probable reason for this is that gastric organoids maintain cell polarity and express EPHA2 only between cells. Therefore, the localization of EPHA2 might change due to gastric epithelial cell injury caused by *H. pylori* infection or by a prior gene mutation, which subsequently facilitates EBV infection.

---

## TUMORIGENIC MECHANISM OF EBV-INFECTED EPITHELIAL CELLS

---

At present, it is difficult to infect primary gastric epithelial cells with EBV and immortalize them. Instead, gastric epithelial cell lines persistently infected with EBV have been used to elucidate the tumorigenic mechanisms of EBV genes during latent infections.

### EBV genes that encode untranslational RNA

The EBV genome contains two miRNA clusters, consisting of four BHRF1 miRNAs and 40 BART miRNAs. Although BHRF1 miRNA is poorly expressed in epithelial cells, BART miRNAs are highly expressed in latently infected epithelial cells and play a substantial role in tumorigenesis[43].

### Epigenetic changes of gene expression in EBV-infected epithelial cells

Modification of gene expression *via* methylation is frequently observed in patients with EBVaGC. Tumor suppressor genes, such as *p14*, *p16*, *p73*, *PTEN*, *APC*, *RASSF1A*, and *CXXC4*, are repressed by promoter methylation. And the expression of molecules important for cell invasion, including *THBS1*, *E-cadherin (CDH1)*, and *TIMP2*, is also repressed by promoter methylation. The decreased expression of these molecules may be involved in carcinogenic processes[44].

Multiple EBV episomal DNAs have been shown to approach enhancer sites in the genome, alter the surrounding chromatin structure (enhancer infestation), and activate genes such as transcription factors [6]. Although epigenetic analyses have been conducted to understand tumorigenesis, the overall mechanism remains unclear.

### Model of tumorigenesis for epithelial EBV infection

Viral gene products transcribed in cells latently infected with EBV confer resistance to apoptosis. *EBV* gene products also accumulate mutations in the genes of the infected cells. Genetic changes in infected cells further affect *EBV* gene expression and alter intercellular communication, including the cross-talk between EBV-infected epithelial cells and immune cells[45] or epithelial-mesenchymal transition[46]. In other words, changes induced by persistent EBV infection in host cell signaling and host immune responses advance the tumorigenic stage[47].

---

## FUTURE PROSPECTS

---

With the progress in research on EBER, miRNA, and long non-coding RNA, the functions of these

molecules in latent EBV-infected cells are being elucidated. A highly tumorigenic B81 EBV strain was isolated from a patient with nasopharyngeal carcinoma[48]; however, an EBV strain unique to gastric cancer has not yet been isolated.

Host gene mutations frequently observed in EBVaGC, including changes in *PIK3CA*, *ARID1A*, *PD-L1*, and *PD-L2*[3] are considered to affect histological characteristics, clinical course, and response to treatment. EBV-induced tumorigenesis is believed to be affected by environmental factors such as previous infections; however, the molecular basis that characterizes EBVaGC remains to be elucidated.

Considering that EBVaGC most strongly expresses *PD-L1* and *PD-L2* among the four molecular subtypes of gastric cancer, immune checkpoint inhibitors are expected to be effective therapeutic agents for EBVaGC[49,50]. *PIK3CA* mutations and *JAK2* amplification are frequently observed in EBVaGC. Therefore, PI3K and JAK2 inhibitors may be effective. Other EBNA-1 inhibitors are also expected to be EBV-specific therapeutic agents[51].

## CONCLUSION

Several clinical and experimental data support the etiological role of *H. pylori* in EBV-associated gastric cancer.

## FOOTNOTES

**Author contributions:** Iizasa H and Okada S contributed to the manuscript writing; Kartika AV, Fekadu S, and Wadi AFAA contributed to the graphic writing; Onomura D, Khatun MM and Moe TM contributed to literature search; Nishikawa J contributed to the study idea and study design; Yoshiyama H contributed to the study idea, study design, manuscript writing, and the final revision of the manuscript.

**Supported by** Grant-in-Aid for Scientific Research From the Ministry of Education, Culture, Science and Technology of Japan, No. 21K07054 (Hironori Yoshiyama) and No. 22K07101 (Hisashi Iizasa).

**Conflict-of-interest statement:** All the authors report no relevant conflicts of interest for this article.

**Open-Access:** This article is an open-access article that was selected by an in-house editor and fully peer-reviewed by external reviewers. It is distributed in accordance with the Creative Commons Attribution NonCommercial (CC BY-NC 4.0) license, which permits others to distribute, remix, adapt, build upon this work non-commercially, and license their derivative works on different terms, provided the original work is properly cited and the use is non-commercial. See: <https://creativecommons.org/licenses/by-nc/4.0/>

**Country/Territory of origin:** Japan

**ORCID number:** Jun Nishikawa 0000-0002-6695-9754; Hironori Yoshiyama 0000-0001-7588-278X.

**Corresponding Author's Membership in Professional Societies:** Japanese Cancer Association, No. 19950.

**S-Editor:** Fan JR

**L-Editor:** A

**P-Editor:** Fan JR

## REFERENCES

- 1 **Stanfield BA**, Luftig MA. Recent advances in understanding Epstein-Barr virus. *Fl000Res* 2017; **6**: 386 [PMID: 28408983 DOI: 10.12688/fl000research.10591.1]
- 2 **Shannon-Lowe C**, Rickinson A. The global landscape of EBV-associated tumors. *Front Oncol* 2019; **9**: 713 [PMID: 31448229 DOI: 10.3389/fonc.2019.00713]
- 3 **Cancer Genome Atlas Research Network**. Comprehensive molecular characterization of gastric adenocarcinoma. *Nature* 2014; **513**: 202-209 [PMID: 25079317 DOI: 10.1038/nature13480]
- 4 **Matsusaka K**, Funata S, Fukuyo M, Seto Y, Aburatani H, Fukayama M, Kaneda A. Epstein-Barr virus infection induces genome-wide *de novo* DNA methylation in non-neoplastic gastric epithelial cells. *J Pathol* 2017; **242**: 391-399 [PMID: 28418084 DOI: 10.1002/path.4909]
- 5 **Matsusaka K**, Kaneda A, Nagae G, Ushiku T, Kikuchi Y, Hino R, Uozaki H, Seto Y, Takada K, Aburatani H, Fukayama M. Classification of Epstein-Barr virus-positive gastric cancers by definition of DNA methylation epigenotypes. *Cancer Res* 2011; **71**: 7187-7197 [PMID: 21990320 DOI: 10.1158/0008-5472.CAN-11-1349]
- 6 **Okabe A**, Huang KK, Matsusaka K, Fukuyo M, Xing M, Ong X, Hoshii T, Usui G, Seki M, Mano Y, Rahmutulla B, Kanda T, Suzuki T, Rha SY, Ushiku T, Fukayama M, Tan P, Kaneda A. Cross-species chromatin interactions drive

- transcriptional rewiring in Epstein-Barr virus-positive gastric adenocarcinoma. *Nat Genet* 2020; **52**: 919-930 [PMID: 32719515 DOI: 10.1038/s41588-020-0665-7]
- 7 **Kaizaki Y**, Sakurai S, Chong JM, Fukayama M. Atrophic gastritis, Epstein-Barr virus infection, and Epstein-Barr virus-associated gastric carcinoma. *Gastric Cancer* 1999; **2**: 101-108 [PMID: 11957081 DOI: 10.1007/s101200050031]
  - 8 **Iizasa H**, Nanbo A, Nishikawa J, Jinushi M, Yoshiyama H. Epstein-Barr virus (EBV)-associated gastric carcinoma. *Viruses* 2012; **4**: 3420-3439 [PMID: 23342366 DOI: 10.3390/v4123420]
  - 9 **Imai S**, Koizumi S, Sugiura M, Tokunaga M, Uemura Y, Yamamoto N, Tanaka S, Sato E, Osato T. Gastric carcinoma: monoclonal epithelial malignant cells expressing Epstein-Barr virus latent infection protein. *Proc Natl Acad Sci U S A* 1994; **91**: 9131-9135 [PMID: 8090780 DOI: 10.1073/pnas.91.19.9131]
  - 10 **Akiba S**, Koriyama C, Herrera-Goepfert R, Eizuru Y. Epstein-Barr virus associated gastric carcinoma: epidemiological and clinicopathological features. *Cancer Sci* 2008; **99**: 195-201 [PMID: 18271915 DOI: 10.1111/j.1349-7006.2007.00674.x]
  - 11 **Koriyama C**, Akiba S, Minakami Y, Eizuru Y. Environmental factors related to Epstein-Barr virus-associated gastric cancer in Japan. *J Exp Clin Cancer Res* 2005; **24**: 547-553 [PMID: 16471317]
  - 12 **Camargo MC**, Kim WH, Chiaravalli AM, Kim KM, Corvalan AH, Matsuo K, Yu J, Sung JJ, Herrera-Goepfert R, Meneses-Gonzalez F, Kijima Y, Natsugoe S, Liao LM, Lissowska J, Kim S, Hu N, Gonzalez CA, Yatabe Y, Koriyama C, Hewitt SM, Akiba S, Gulley ML, Taylor PR, Rabkin CS. Improved survival of gastric cancer with tumour Epstein-Barr virus positivity: an international pooled analysis. *Gut* 2014; **63**: 236-243 [PMID: 23580779 DOI: 10.1136/gutjnl-2013-304531]
  - 13 **Sohn BH**, Hwang JE, Jang HJ, Lee HS, Oh SC, Shim JJ, Lee KW, Kim EH, Yim SY, Lee SH, Cheong JH, Jeong W, Cho JY, Kim J, Chae J, Lee J, Kang WK, Kim S, Noh SH, Ajani JA, Lee JS. Clinical significance of four molecular subtypes of gastric cancer identified by The Cancer Genome Atlas project. *Clin Cancer Res* 2017; **23**: 4441-4449 [PMID: 28747339 DOI: 10.1158/1078-0432.CCR-16-2211]
  - 14 **Fukayama M**, Hayashi Y, Iwasaki Y, Chong J, Ooba T, Takizawa T, Koike M, Mizutani S, Miyaki M, Hirai K. Epstein-Barr virus-associated gastric carcinoma and Epstein-Barr virus infection of the stomach. *Lab Invest* 1994; **71**: 73-81 [PMID: 8041121]
  - 15 **Zur Hausen A**, van Rees BP, van Beek J, Craanen ME, Bloemena E, Offerhaus GJ, Meijer CJ, van den Brule AJ. Epstein-Barr virus in gastric carcinomas and gastric stump carcinomas: a late event in gastric carcinogenesis. *J Clin Pathol* 2004; **57**: 487-491 [PMID: 15113855 DOI: 10.1136/jcp.2003.014068]
  - 16 **Abe H**, Kunita A, Otake Y, Kanda T, Kaneda A, Ushiku T, Fukayama M. Virus-host interactions in carcinogenesis of Epstein-Barr virus-associated gastric carcinoma: Potential roles of lost ARID1A expression in its early stage. *PLoS One* 2021; **16**: e0256440 [PMID: 34469459 DOI: 10.1371/journal.pone.0256440]
  - 17 **Rani A**, Jakhmola S, Karnati S, Parmar HS, Chandra Jha H. Potential entry receptors for human  $\gamma$ -herpesvirus into epithelial cells: A plausible therapeutic target for viral infections. *Tumour Virus Res* 2021; **12**: 200227 [PMID: 34800753 DOI: 10.1016/j.tvr.2021.200227]
  - 18 **Faulkner GC**, Burrows SR, Khanna R, Moss DJ, Bird AG, Crawford DH. X-Linked agammaglobulinemia patients are not infected with Epstein-Barr virus: implications for the biology of the virus. *J Virol* 1999; **73**: 1555-1564 [PMID: 9882361 DOI: 10.1128/JVI.73.2.1555-1564.1999]
  - 19 **Shannon-Lowe CD**, Neuhierl B, Baldwin G, Rickinson AB, Delecluse HJ. Resting B cells as a transfer vehicle for Epstein-Barr virus infection of epithelial cells. *Proc Natl Acad Sci U S A* 2006; **103**: 7065-7070 [PMID: 16606841 DOI: 10.1073/pnas.0510512103]
  - 20 **Dittmer DP**, Hilscher CJ, Gulley ML, Yang EV, Chen M, Glaser R. Multiple pathways for Epstein-Barr virus episome loss from nasopharyngeal carcinoma. *Int J Cancer* 2008; **123**: 2105-2112 [PMID: 18688856 DOI: 10.1002/ijc.23685]
  - 21 **Iwasaki Y**, Chong JM, Hayashi Y, Ikeno R, Arai K, Kitamura M, Koike M, Hirai K, Fukayama M. Establishment and characterization of a human Epstein-Barr virus-associated gastric carcinoma in SCID mice. *J Virol* 1998; **72**: 8321-8326 [PMID: 9733877 DOI: 10.1128/JVI.72.10.8321-8326.1998]
  - 22 **Oh ST**, Kim M, Lee SK. Maintenance of the viral episome is essential for the cell survival of an Epstein-Barr virus positive gastric carcinoma cell line. *Arch Pharm Res* 2009; **32**: 729-736 [PMID: 19471888 DOI: 10.1007/s12272-009-1512-7]
  - 23 **Nishikawa J**, Imai S, Oda T, Kojima T, Okita K, Takada K. Epstein-Barr virus promotes epithelial cell growth in the absence of EBNA2 and LMP1 expression. *J Virol* 1999; **73**: 1286-1292 [PMID: 9882333 DOI: 10.1128/JVI.73.2.1286-1292.1999]
  - 24 **Frappier L**. Contributions of Epstein-Barr nuclear antigen 1 (EBNA1) to cell immortalization and survival. *Viruses* 2012; **4**: 1537-1547 [PMID: 23170171 DOI: 10.3390/v4091537]
  - 25 **Hino R**, Uozaki H, Inoue Y, Shintani Y, Ushiku T, Sakatani T, Takada K, Fukayama M. Survival advantage of EBV-associated gastric carcinoma: survivin up-regulation by viral latent membrane protein 2A. *Cancer Res* 2008; **68**: 1427-1435 [PMID: 18316606 DOI: 10.1158/0008-5472.CAN-07-3027]
  - 26 **Hino R**, Uozaki H, Murakami N, Ushiku T, Shinozaki A, Ishikawa S, Morikawa T, Nakaya T, Sakatani T, Takada K, Fukayama M. Activation of DNA methyltransferase 1 by EBV latent membrane protein 2A leads to promoter hypermethylation of PTEN gene in gastric carcinoma. *Cancer Res* 2009; **69**: 2766-2774 [PMID: 19339266 DOI: 10.1158/0008-5472.CAN-08-3070]
  - 27 **Lo AK**, Dawson CW, Lung HL, Wong KL, Young LS. The therapeutic potential of targeting BARF1 in EBV-associated malignancies. *Cancers (Basel)* 2020; **12** [PMID: 32708965 DOI: 10.3390/cancers12071940]
  - 28 **Seto E**, Yang L, Middeldorp J, Sheen TS, Chen JY, Fukayama M, Eizuru Y, Ooka T, Takada K. Epstein-Barr virus (EBV)-encoded BARF1 gene is expressed in nasopharyngeal carcinoma and EBV-associated gastric carcinoma tissues in the absence of lytic gene expression. *J Med Virol* 2005; **76**: 82-88 [PMID: 15778977 DOI: 10.1002/jmv.20327]
  - 29 **Iizasa H**, Kim H, Kartika AV, Kanehiro Y, Yoshiyama H. Role of viral and host microRNAs in immune regulation of Epstein-Barr virus-associated diseases. *Front Immunol* 2020; **11**: 367 [PMID: 32194570 DOI: 10.3389/fimmu.2020.00367]
  - 30 **Lin X**, Tsai MH, Shumilov A, Poirey R, Bannert H, Middeldorp JM, Feederle R, Delecluse HJ. The Epstein-Barr virus BART miRNA cluster of the M81 strain modulates multiple functions in primary B cells. *PLoS Pathog* 2015; **11**: e1005344 [PMID: 26694854 DOI: 10.1371/journal.ppat.1005344]



- 31 **Nanbo A**, Inoue K, Adachi-Takasawa K, Takada K. Epstein-Barr virus RNA confers resistance to interferon-alpha-induced apoptosis in Burkitt's lymphoma. *EMBO J* 2002; **21**: 954-965 [PMID: [11867523](#) DOI: [10.1093/emboj/21.5.954](#)]
- 32 **Wu Y**, Maruo S, Yajima M, Kanda T, Takada K. Epstein-Barr virus (EBV)-encoded RNA 2 (EBER2) but not EBER1 plays a critical role in EBV-induced B-cell growth transformation. *J Virol* 2007; **81**: 11236-11245 [PMID: [17686859](#) DOI: [10.1128/JVI.00579-07](#)]
- 33 **Uemura N**, Okamoto S, Yamamoto S, Matsumura N, Yamaguchi S, Yamakido M, Taniyama K, Sasaki N, Schlemper RJ. *Helicobacter pylori* infection and the development of gastric cancer. *N Engl J Med* 2001; **345**: 784-789 [PMID: [11556297](#) DOI: [10.1056/NEJMoa001999](#)]
- 34 **Camargo MC**, Kim KM, Matsuo K, Torres J, Liao LM, Morgan DR, Michel A, Waterboer T, Zabaleta J, Dominguez RL, Yatabe Y, Kim S, Rocha-Guevara ER, Lissowska J, Pawlita M, Rabkin CS. Anti-*Helicobacter pylori* antibody profiles in Epstein-Barr virus (EBV)-positive and EBV-negative gastric cancer. *Helicobacter* 2016; **21**: 153-157 [PMID: [26251258](#) DOI: [10.1111/hel.12249](#)]
- 35 **Zhao K**, Zhang Y, Xia S, Feng L, Zhou W, Zhang M, Dong R, Tian D, Liu M, Liao J. Epstein-Barr virus is associated with gastric cancer precursor: Atrophic gastritis. *Int J Med Sci* 2022; **19**: 924-931 [PMID: [35693736](#) DOI: [10.7150/ijms.71820](#)]
- 36 **Martínez-López JL**, Torres J, Camorlinga-Ponce M, Mantilla A, Leal YA, Fuentes-Pananá EM. Evidence of Epstein-Barr virus association with gastric cancer and non-atrophic gastritis. *Viruses* 2014; **6**: 301-318 [PMID: [24448220](#) DOI: [10.3390/v6010301](#)]
- 37 **Kartika AV**, Iizasa H, Ding D, Kanehiro Y, Tajima Y, Kaji S, Yanai H, Yoshiyama H. Application of biopsy samples used for *Helicobacter pylori* urease test to predict Epstein-Barr virus-associated cancer. *Microorganisms* 2020; **8** [PMID: [32570907](#) DOI: [10.3390/microorganisms8060923](#)]
- 38 **Hirano A**, Yanai H, Shimizu N, Okamoto T, Matsubara Y, Yamamoto K, Okita K. Evaluation of Epstein-Barr virus DNA load in gastric mucosa with chronic atrophic gastritis using a real-time quantitative PCR assay. *Int J Gastrointest Cancer* 2003; **34**: 87-94 [PMID: [15361640](#) DOI: [10.1385/IJGC:34:2-3:087](#)]
- 39 **Saju P**, Murata-Kamiya N, Hayashi T, Senda Y, Nagase L, Noda S, Matsusaka K, Funata S, Kunita A, Urabe M, Seto Y, Fukayama M, Kaneda A, Hatakeyama M. Host SHP1 phosphatase antagonizes *Helicobacter pylori* CagA and can be downregulated by Epstein-Barr virus. *Nat Microbiol* 2016; **1**: 16026 [PMID: [27572445](#) DOI: [10.1038/nmicrobiol.2016.26](#)]
- 40 **Pandey S**, Jha HC, Shukla SK, Shirley MK, Robertson ES. Epigenetic regulation of tumor suppressors by *Helicobacter pylori* enhances EBV-induced proliferation of gastric epithelial cells. *mBio* 2018; **9** [PMID: [29691341](#) DOI: [10.1128/mBio.00649-18](#)]
- 41 **Fekadu S**, Kanehiro Y, Kartika AV, Hamada K, Sakurai N, Mizote T, Akada J, Yamaoka Y, Iizasa H, Yoshiyama H. Gastric epithelial attachment of *Helicobacter pylori* induces EphA2 and NMHC-IIA receptors for Epstein-Barr virus. *Cancer Sci* 2021; **112**: 4799-4811 [PMID: [34449934](#) DOI: [10.1111/cas.15121](#)]
- 42 **Wallaschek N**, Reuter S, Silkenat S, Wolf K, Niklas C, Kayisoglu Ö, Aguilar C, Wiegner A, Germer CT, Kircher S, Rosenwald A, Shannon-Lowe C, Bartfeld S. Ephrin receptor A2, the epithelial receptor for Epstein-Barr virus entry, is not available for efficient infection in human gastric organoids. *PLoS Pathog* 2021; **17**: e1009210 [PMID: [33596248](#) DOI: [10.1371/journal.ppat.1009210](#)]
- 43 **Shinozaki-Ushiku A**, Kunita A, Isogai M, Hibiya T, Ushiku T, Takada K, Fukayama M. Profiling of virus-encoded microRNAs in Epstein-Barr virus-associated gastric carcinoma and their roles in gastric carcinogenesis. *J Virol* 2015; **89**: 5581-5591 [PMID: [25740983](#) DOI: [10.1128/JVI.03639-14](#)]
- 44 **Chang MS**, Uozaki H, Chong JM, Ushiku T, Sakuma K, Ishikawa S, Hino R, Barua RR, Iwasaki Y, Arai K, Fujii H, Nagai H, Fukayama M. CpG island methylation status in gastric carcinoma with and without infection of Epstein-Barr virus. *Clin Cancer Res* 2006; **12**: 2995-3002 [PMID: [16707594](#) DOI: [10.1158/1078-0432.CCR-05-1601](#)]
- 45 **Zhang G**, Tsang CM, Deng W, Yip YL, Lui VW, Wong SC, Cheung AL, Hau PM, Zeng M, Lung ML, Chen H, Lo KW, Takada K, Tsao SW. Enhanced IL-6/IL-6R signaling promotes growth and malignant properties in EBV-infected premalignant and cancerous nasopharyngeal epithelial cells. *PLoS One* 2013; **8**: e62284 [PMID: [23658720](#) DOI: [10.1371/journal.pone.0062284](#)]
- 46 **Sides MD**, Klingsberg RC, Shan B, Gordon KA, Nguyen HT, Lin Z, Takahashi T, Flemington EK, Lasky JA. The Epstein-Barr virus latent membrane protein 1 and transforming growth factor- $\beta$ 1 synergistically induce epithelial-mesenchymal transition in lung epithelial cells. *Am J Respir Cell Mol Biol* 2011; **44**: 852-862 [PMID: [20693406](#) DOI: [10.1165/rcmb.2009-0232OC](#)]
- 47 **Tsao SW**, Tsang CM, To KF, Lo KW. The role of Epstein-Barr virus in epithelial malignancies. *J Pathol* 2015; **235**: 323-333 [PMID: [25251730](#) DOI: [10.1002/path.4448](#)]
- 48 **Tsai MH**, Raykova A, Klinke O, Bernhardt K, Gärtner K, Leung CS, Geletnekky K, Sertel S, Münz C, Feederle R, Delecluse HJ. Spontaneous lytic replication and epitheliotropism define an Epstein-Barr virus strain found in carcinomas. *Cell Rep* 2013; **5**: 458-470 [PMID: [24120866](#) DOI: [10.1016/j.celrep.2013.09.012](#)]
- 49 **Sasaki S**, Nishikawa J, Sakai K, Iizasa H, Yoshiyama H, Yanagihara M, Shuto T, Shimokuri K, Kanda T, Suehiro Y, Yamasaki T, Sakaida I. EBV-associated gastric cancer evades T-cell immunity by PD-1/PD-L1 interactions. *Gastric Cancer* 2019; **22**: 486-496 [PMID: [30264329](#) DOI: [10.1007/s10120-018-0880-4](#)]
- 50 **Kim ST**, Cristescu R, Bass AJ, Kim KM, Odegaard JI, Kim K, Liu XQ, Sher X, Jung H, Lee M, Lee S, Park SH, Park JO, Park YS, Lim HY, Lee H, Choi M, Talasz A, Kang PS, Cheng J, Loboda A, Lee J, Kang WK. Comprehensive molecular characterization of clinical responses to PD-1 inhibition in metastatic gastric cancer. *Nat Med* 2018; **24**: 1449-1458 [PMID: [30013197](#) DOI: [10.1038/s41591-018-0101-z](#)]
- 51 **Sivachandran N**, Dawson CW, Young LS, Liu FF, Middeldorp J, Frappier L. Contributions of the Epstein-Barr virus EBNA1 protein to gastric carcinoma. *J Virol* 2012; **86**: 60-68 [PMID: [22013060](#) DOI: [10.1128/JVI.05623-11](#)]
- 52 **Yoshiyama H**, Imai S, Shimizu N, Takada K. Epstein-Barr virus infection of human gastric carcinoma cells: implication of the existence of a new virus receptor different from CD21. *J Virol* 1997; **71**: 5688-5691 [PMID: [9188650](#) DOI: [10.1128/JVI.71.7.5688-5691.1997](#)]



Published by **Baishideng Publishing Group Inc**  
7041 Koll Center Parkway, Suite 160, Pleasanton, CA 94566, USA

**Telephone:** +1-925-3991568

**E-mail:** [bpgoffice@wjgnet.com](mailto:bpgoffice@wjgnet.com)

**Help Desk:** <https://www.f6publishing.com/helpdesk>

<https://www.wjgnet.com>

