

World Journal of *Gastroenterology*

World J Gastroenterol 2022 March 7; 28(9): 881-975



REVIEW

- 881** Innate and adaptive immune escape mechanisms of hepatitis B virus
Zhao HJ, Hu YF, Han QJ, Zhang J

MINIREVIEWS

- 897** Dualistic role of platelets in living donor liver transplantation: Are they harmful?
Liang C, Takahashi K, Furuya K, Ohkohchi N, Oda T
- 909** Applications of endoscopic ultrasound elastography in pancreatic diseases: From literature to real life
Conti CB, Mulinacci G, Salerno R, Dinelli ME, Grassia R

ORIGINAL ARTICLE

Basic Study

- 918** Cystic fibrosis transmembrane conductance regulator prevents ischemia/reperfusion induced intestinal apoptosis *via* inhibiting PI3K/AKT/NF- κ B pathway
Dong ZW, Liu H, Su FF, Fan XZ, Zhang Y, Liu P

Retrospective Cohort Study

- 933** Sex-based differences in histology, staging, and prognosis among 2983 gastric cancer surgery patients
Choi Y, Kim N, Kim KW, Jo HH, Park J, Yoon H, Shin CM, Park YS, Lee DH, Oh HJ, Lee HS, Park YS, Ahn SH, Suh YS, Park DJ, Kim HH, Kim JW, Kim JW, Lee KW, Chang W, Park JH, Lee YJ, Lee KH, Kim YH

Retrospective Study

- 948** Postoperative morbidity adversely impacts oncological prognosis after curative resection for hilar cholangiocarcinoma
Liu ZP, Chen WY, Zhang YQ, Jiang Y, Bai J, Pan Y, Zhong SY, Zhong YP, Chen ZY, Dai HS

Observational Study

- 961** Relationship between clinical remission of perianal fistulas in Crohn's disease and serum adalimumab concentrations: A multi-center cross-sectional study
Sirmai L, Pelletier AL, Gault N, Zallot C, Bouguen G, Bouchard D, Roland Nicaise P, Peyneau M, Sironneau S, Bittencourt MDC, Petitcollin A, Fernandez P, Roblin X, Siproudhis L, Abramowitz L

LETTER TO THE EDITOR

- 973** Radiomics-clinical nomogram for response to chemotherapy in synchronous liver metastasis of colorectal cancer: Good, but not good enough
Yan H, Yu TN

ABOUT COVER

Editorial Board Member of *World Journal of Gastroenterology*, Shozo Osera, MD, PhD, Chief Physician, Department of Gastroenterology, Saku Central Hospital Advanced Care Center, 3400-28, Nakagomi, Saku 385-0051, Nagano, Japan. shou0122@hotmail.com

AIMS AND SCOPE

The primary aim of *World Journal of Gastroenterology* (WJG, *World J Gastroenterol*) is to provide scholars and readers from various fields of gastroenterology and hepatology with a platform to publish high-quality basic and clinical research articles and communicate their research findings online. WJG mainly publishes articles reporting research results and findings obtained in the field of gastroenterology and hepatology and covering a wide range of topics including gastroenterology, hepatology, gastrointestinal endoscopy, gastrointestinal surgery, gastrointestinal oncology, and pediatric gastroenterology.

INDEXING/ABSTRACTING

The WJG is now indexed in Current Contents®/Clinical Medicine, Science Citation Index Expanded (also known as SciSearch®), Journal Citation Reports®, Index Medicus, MEDLINE, PubMed, PubMed Central, and Scopus. The 2021 edition of Journal Citation Report® cites the 2020 impact factor (IF) for WJG as 5.742; Journal Citation Indicator: 0.79; IF without journal self cites: 5.590; 5-year IF: 5.044; Ranking: 28 among 92 journals in gastroenterology and hepatology; and Quartile category: Q2. The WJG's CiteScore for 2020 is 6.9 and Scopus CiteScore rank 2020: Gastroenterology is 19/136.

RESPONSIBLE EDITORS FOR THIS ISSUE

Production Editor: *Ying-Yi Yuan*, Production Department Director: *Xiang Li*, Editorial Office Director: *Ze-Mao Gong*.

NAME OF JOURNAL

World Journal of Gastroenterology

ISSN

ISSN 1007-9327 (print) ISSN 2219-2840 (online)

LAUNCH DATE

October 1, 1995

FREQUENCY

Weekly

EDITORS-IN-CHIEF

Andrzej S Tarnawski

EDITORIAL BOARD MEMBERS

<http://www.wjgnet.com/1007-9327/editorialboard.htm>

PUBLICATION DATE

March 7, 2022

COPYRIGHT

© 2022 Baishideng Publishing Group Inc

INSTRUCTIONS TO AUTHORS

<https://www.wjgnet.com/bpg/gerinfo/204>

GUIDELINES FOR ETHICS DOCUMENTS

<https://www.wjgnet.com/bpg/GerInfo/287>

GUIDELINES FOR NON-NATIVE SPEAKERS OF ENGLISH

<https://www.wjgnet.com/bpg/gerinfo/240>

PUBLICATION ETHICS

<https://www.wjgnet.com/bpg/GerInfo/288>

PUBLICATION MISCONDUCT

<https://www.wjgnet.com/bpg/gerinfo/208>

ARTICLE PROCESSING CHARGE

<https://www.wjgnet.com/bpg/gerinfo/242>

STEPS FOR SUBMITTING MANUSCRIPTS

<https://www.wjgnet.com/bpg/GerInfo/239>

ONLINE SUBMISSION

<https://www.f6publishing.com>



Retrospective Study

Postoperative morbidity adversely impacts oncological prognosis after curative resection for hilar cholangiocarcinoma

Zhi-Peng Liu, Wei-Yue Chen, Yan-Qi Zhang, Yan Jiang, Jie Bai, Yu Pan, Shi-Yun Zhong, Yun-Ping Zhong, Zhi-Yu Chen, Hai-Su Dai

Specialty type: Gastroenterology and hepatology

Provenance and peer review:

Unsolicited article; Externally peer reviewed.

Peer-review model: Single blind

Peer-review report's scientific quality classification

Grade A (Excellent): 0
Grade B (Very good): B, B, B
Grade C (Good): C, C
Grade D (Fair): 0
Grade E (Poor): 0

P-Reviewer: Gusho CA, Isaji S, Kim BS, Ziogas IA

Received: September 1, 2021

Peer-review started: September 1, 2021

First decision: November 17, 2021

Revised: November 25, 2021

Accepted: January 29, 2022

Article in press: January 29, 2022

Published online: March 7, 2022



Zhi-Peng Liu, Yan Jiang, Jie Bai, Yu Pan, Shi-Yun Zhong, Yun-Ping Zhong, Zhi-Yu Chen, Hai-Su Dai, Department of Hepatobiliary Surgery, Southwest Hospital, Third Military Medical University (Army Medical University), Chongqing 400038, China

Wei-Yue Chen, Department of Clinical Center of Oncology, Lishui Hospital of Zhejiang University, Lishui 323000, Zhejiang Province, China

Yan-Qi Zhang, Department of Health Statistics, Third Military Medical University (Army Medical University), Chongqing 400038, China

Corresponding author: Hai-Su Dai, MD, Professor, Department of Hepatobiliary Surgery, Southwest Hospital, Third Military Medical University (Army Medical University), No. 30 Gaotanyan Road, Chongqing 400038, China. daihsu@163.com

Abstract

BACKGROUND

Postoperative morbidity after curative resection for hilar cholangiocarcinoma (HCCA) is common; however, whether it has an impact on oncological prognosis is unknown.

AIM

To evaluate the influence of postoperative morbidity on tumor recurrence and mortality after curative resection for HCCA.

METHODS

Patients with recently diagnosed HCCA who had undergone curative resection between January 2010 and December 2017 at The First Affiliated Hospital of Army Medical University in China were enrolled. The independent risk factors for morbidity in the 30 d after surgery were investigated, and links between postoperative morbidity and patient characteristics and outcomes were assessed. Postoperative morbidities were divided into five grades based on the Clavien-Dindo classification, and major morbidities were defined as Clavien-Dindo ≥ 3 . Univariate and multivariate Cox regression analyses were used to evaluate the risk factors for recurrence-free survival (RFS) and overall survival (OS).

RESULTS

Postoperative morbidity occurred in 146 out of 239 patients (61.1%). Multivariate

logistic regression revealed that cirrhosis, intraoperative blood loss > 500 mL, diabetes mellitus, and obesity were independent risk factors. Postoperative morbidity was associated with decreased OS and RFS (OS: 18.0 mo *vs* 31.0 mo, respectively, $P = 0.003$; RFS: 16.0 mo *vs* 26.0 mo, respectively, $P = 0.002$). Multivariate Cox regression analysis indicated that postoperative morbidity was independently associated with decreased OS [hazard ratios (HR): 1.557, 95% confidence interval (CI): 1.119-2.167, $P = 0.009$] and RFS (HR: 1.535, 95%CI: 1.117-2.108, $P = 0.008$). Moreover, major morbidity was independently associated with decreased OS (HR: 2.175; 95%CI: 1.470-3.216, $P < 0.001$) and RFS (HR: 2.054; 95%CI: 1.400-3.014, $P < 0.001$) after curative resection for HCCA.

CONCLUSION

Postoperative morbidity (especially major morbidity) may be an independent risk factor for unfavorable prognosis in HCCA patients following curative resection.

Key Words: Hilar cholangiocarcinoma; Morbidity; Surgery; Oncology; Survival; Recurrence

©The Author(s) 2022. Published by Baishideng Publishing Group Inc. All rights reserved.

Core Tip: In this study, postoperative morbidity was found to be an independent risk factor for poor overall survival and recurrence-free survival following curative resection for hilar cholangiocarcinoma. In addition, this study revealed the independent risk factors associated with increased postoperative morbidity, which could help to reduce the incidence of postoperative morbidity and improve oncological prognosis.

Citation: Liu ZP, Chen WY, Zhang YQ, Jiang Y, Bai J, Pan Y, Zhong SY, Zhong YP, Chen ZY, Dai HS. Postoperative morbidity adversely impacts oncological prognosis after curative resection for hilar cholangiocarcinoma. *World J Gastroenterol* 2022; 28(9): 948-960

URL: <https://www.wjgnet.com/1007-9327/full/v28/i9/948.htm>

DOI: <https://dx.doi.org/10.3748/wjg.v28.i9.948>

INTRODUCTION

Cholangiocarcinoma is a common malignancy of the liver, second only to hepatocellular carcinoma (HCC) in incidence and accounting for approximately 10% of primary liver tumors[1,2]. Hilar cholangiocarcinoma (HCCA), also referred to as a Klatskin tumor, represents 60% of cholangiocarcinomas[3]. The HCCA incidence is increasing, and tumors have a poorer prognosis than any other hepatobiliary tumor, such as HCC, with five-year survival rates of 20% to 40%[4,5]. Radical surgery offers a possible cure for eligible HCCA patients. However, the oncological prognosis after liver resection for HCCA is often uncertain, as the tumor recurs within five years in over 60% of patients[6,7]. Consequently, identifying the risk factors that influence HCCA recurrence is important to improve outcomes.

Previous studies have demonstrated that postoperative morbidity is linked to greater recurrence and lower survival rates than many other gastrointestinal tumors, such as HCC[8], pancreatic[9], gastric[10,11], and colorectal carcinomas[12,13], as well as intrahepatic cholangiocarcinoma[14]. Systemic inflammation may result from postoperative morbidity, which could, in turn, reduce the effectiveness of the immune response against the tumor[15]. This may explain the relationship between poorer prognosis and postoperative morbidity. Regrettably, because HCCA surgery is one of the most complicated operations in hepatobiliary surgery, there is a high incidence of postoperative morbidity, ranging from 30% to 70%[16]. Postoperative morbidity is linked to both surgical factors and patients' underlying diseases[17-19]. From our point of view, surgery should be both safe and effective, avoiding postoperative morbidity to improve oncological prognosis. However, few studies have investigated the effects of postoperative morbidity on oncological prognosis in patients with HCCA after curative resection.

Therefore, this study aimed to determine if there is a link between the presence of postoperative morbidity and oncological prognosis following curative resection for HCCA. Additionally, the study assessed the independent risk factors for the occurrence of postoperative morbidity.

MATERIALS AND METHODS

Patients

The data of patients with HCCA who had undergone curative resection for newly diagnosed HCCA between January 2010 and December 2017 at The First Affiliated Hospital of Army Medical University (Southwest Hospital) in China were collected and analyzed. The HCCA diagnosis was confirmed by postoperative pathological evaluation. Extrahepatic bile duct resection and partial hepatectomy were performed on all patients. Regardless of preoperative computed tomography (CT), magnetic resonance imaging (MRI) or suspicion of lymph node metastasis, all patients underwent locoregional lymphadenectomy. To achieve curative resection, combined pancreaticoduodenectomy and/or vascular resection was conducted, with curative resection classified as complete tumor (both macroscopic and microscopic) removal, with clear resection margins visible on microscopy (R0 resection). Patient exclusion criteria were: (1) Having received adjuvant chemotherapy and radiotherapy; (2) Unresectable tumor at exploration; (3) Having undergone R1 or R2 resection; (4) Recurrent HCCA; (5) Age < 18 years; (6) Postoperative death within 30 d; and (7) Incomplete data. The study was conducted in accordance with the Declaration of Helsinki. The study was approved by the Institutional Review Board of the South-West Hospital of Chongqing, China (No. KY2021129). Patients were not required to give informed consent for the study because the analysis used anonymous clinical data that were obtained after each patient agreed to treatment by written consent.

Variables

Variables related to patients and liver pathology included age, sex, American Society of Anesthesiologists (ASA) score, obesity (BMI > 30), diabetes mellitus, cirrhosis, and preoperative drainage. Cirrhosis was verified by postoperative histopathology. Tumor-related variables included preoperative carbohydrate antigen 19-9 (CA19-9) levels, maximum tumor size, macrovascular and microvascular invasion, peripheral nerve invasion, metastasis to lymph nodes, Bismuth type, and poorly differentiated tumors. A preoperative CA19-9 level of 150 U/L was used as a threshold to separate patients into two groups[20]. The operative variables were intraoperative blood loss, blood transfusion, and the extent of hepatectomy (minor or major). Resection of three or more Couinaud liver segments was called major hepatectomy, whereas resection of fewer segments was labeled minor hepatectomy.

Perioperative outcomes

Postoperative morbidity was classified according to the Clavien-Dindo classification[21], with minor morbidity defined as Clavien-Dindo grades I-II and major morbidity defined as grades III-V. The occurrence of postoperative morbidity within 30 d was recorded, as was the postoperative morbidity hospital stay. Morbidity included posthepatectomy liver failure (PHLF); blood, lung, abdominal, and biliary infection; pleural effusion; bile leakage; ascites; intestinal leakage cholangitis; abdominal hemorrhage; delayed gastric emptying; and wound dehiscence, among others. PHLF was recognized by the “50-50 criteria” five days or more after surgery[22]. A severe drop of > 3 g/dL in the postoperative hemoglobin level compared with the preoperative level was indicative of abdominal hemorrhage, with or without the need for transfusion and/or reoperation. Bile leakage was defined as a drain bilirubin concentration of more than three times higher than that of serum. Ascites or pleural effusions requiring diuretic administration or paracentesis were also recognized. Surgical site infection was diagnosed based on the Prevention of the National Nosocomial Infections Surveillance and Centers for Disease Control[23].

Follow-up procedures

The patients were followed up at regular intervals (approximately 1-2 mo) after discharge. A standard protocol was used to evaluate the presence of HCCA recurrence. This included clinical symptoms, physical examinations, laboratory tests (liver function and tumor biomarkers), and abdominal ultrasonography. CT, MRI, or ultrasonic contrast was performed every two months after surgery or when tumor recurrence was suspected. The presence of new lesions seen on MRI or CT was defined as recurrence that was treated by surgery, drugs, or supportive therapy.

Endpoints

The primary endpoint was overall survival (OS), and the secondary endpoint was recurrence-free survival (RFS). OS was considered to be the interval from curative resection to death or last follow-up. For patients with recurrence, RFS was considered to be the interval from curative resection to the diagnosis of tumor recurrence. For patients without recurrence, RFS was taken as the interval from curative resection to death or last follow-up. Until the study's termination on July 15, 2020, all patients were followed up on until death or loss to follow-up.

Statistical analysis

Continuous variables are expressed as the means \pm SD or medians (range), and categorical variables are expressed as the frequencies and percentages. Student's *t* test or the Mann-Whitney *U* test was used for

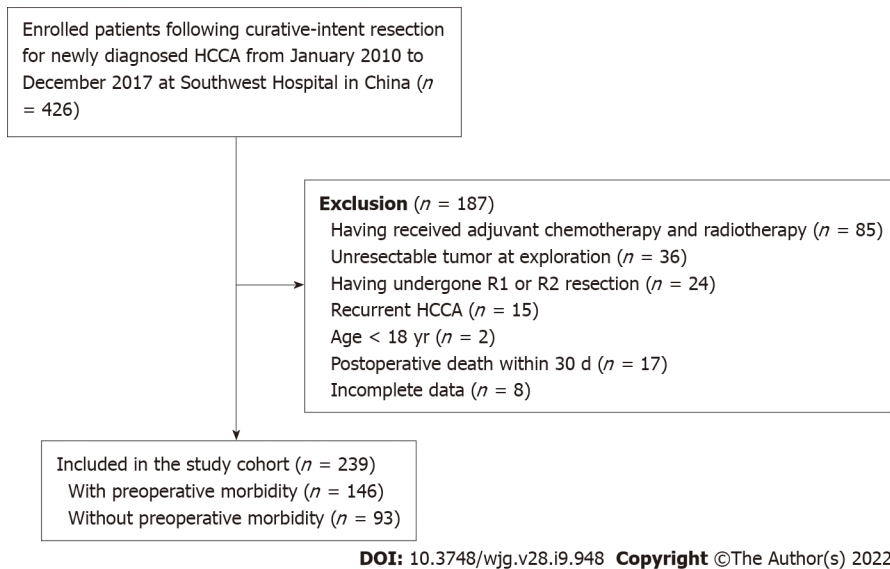


Figure 1 Selection of the study population. HCCA: Hilar cholangiocarcinoma.

continuous variables, and Pearson's chi-square test was used for categorical variables. The Kaplan–Meier method and log-rank test were used to calculate and compare the OS and RFS rates. Variables showing significance levels of $P < 0.1$ on univariate analyses were used for multivariate analysis by the Cox proportional hazard model. In univariate and multivariate Cox regression studies, hazard ratios (HRs) and their 95 percent confidence intervals (CIs) were calculated. SPSS® version 26.0 (IBM, Armonk, New York, United States) was used for statistical analysis. P values were two-sided, and statistical significance was defined as a P value of less than 0.05.

RESULTS

Perioperative outcomes

In our study, 239 patients were included based on established inclusion criteria (Figure 1). All patients performed open surgery. Table 1 presents the perioperative outcomes for the 239 patients. Of these patients, 146 (61.1%) experienced morbidity within 30 d of surgery, with minor morbidity occurring in 78 (32.6%) and major morbidity in 68 (28.5%) patients. The top three causes of morbidity were surgical site infection (36/239, 15.1%), bile leak (32/239, 13.4%), and pleural effusion (24/239, 10.0%).

Patient characteristics

Table 2 shows the comparisons of patients' clinicopathologic and operative variables between those with and without postoperative morbidity. Notably, obesity, diabetes mellitus, cirrhosis, and intraoperative blood loss > 500 mL were more common in patients with morbidity ($P < 0.05$).

Risk factors for postoperative morbidity

In the multiple logistic regression model using significant ($P < 0.1$) factors shown in Table 2, cirrhosis [odds ratio (OR): 2.867; 95%CI: 1.207-6.810; $P = 0.017$], intraoperative blood loss > 500 mL (OR: 2.240; 95%CI: 1.162-4.318; $P = 0.016$), diabetes mellitus (OR: 3.395; 95%CI: 1.082-10.651; $P = 0.036$), and obesity (OR: 3.694; 95%CI: 1.197-11.394; $P = 0.023$) were identified as independent risk factors for postoperative morbidity (Table 3).

Survival outcomes

Table 4 shows the relationships between the patient survival outcomes and perioperative morbidity. Over the median 19.0-mo follow-up period, tumor recurrence and death were apparent in 76.7% (112/146) and 71.9% (105/146), respectively, of patients with postoperative morbidity and in 64.5% (60/93) and 59.1% (55/93), respectively, of patients who did not experience morbidity (recurrence, $P = 0.041$; death, $P = 0.041$). The median OS and RFS were significantly lower in the patients with postoperative morbidity, as shown in Figure 2 (OS: 18.0 mo *vs* 31.0 mo, $P = 0.003$; RFS: 16.0 mo *vs* 26.0 mo, $P = 0.002$).

Table 1 Postoperative outcomes of 239 patients who underwent curative resection for hilar cholangiocarcinoma

Postoperative outcomes (n = 239)	Patients (%)
Postoperative 30-d morbidity	146 (61.1)
Minor morbidity (Clavien-Dindo grade I-II)	78 (32.6)
Major morbidity (Clavien-Dindo grade III-IV)	68 (28.5)
Types of postoperative 30-d morbidity	
PHLF	15 (6.3)
Blood infection	14 (5.9)
Lung infection	12 (5.0)
Bile leakage	32 (13.4)
Pleural effusion	24 (10.0)
Ascites	4 (1.7)
Intestines leak	9 (3.8)
Abdominal hemorrhage	10 (6.8)
Delayed gastric emptying	17 (7.1)
Surgical site infection	36 (15.1)
Others	11 (4.6)
Postoperative hospital stay, days¹	19 (15, 26)

¹Values are median (interquartile range).

PHLF: Post-hepatectomy liver failure.

Prognostic factors for survival

Tables 5 and 6 present the results of the univariate and multivariate Cox regression analyses, respectively, for survival prediction. The multivariate analysis identified postoperative morbidity was independently associated with decreased OS (HR: 1.557, 95%CI: 1.119-2.167, $P = 0.009$) and RFS (HR: 1.535, 95%CI: 1.117-2.108, $P = 0.008$). Furthermore, preoperative CA19-9 > 150 U/L, maximum tumor size > 3 cm, lymph node metastasis, macrovascular invasion, and poor tumor differentiation were also observed to be risk factors for both OS and RFS.

Furthermore, based on the severity of postoperative morbidity, major morbidity was associated with both lower OS and RFS, as shown in Figure 3 (OS: HR: 2.175; 95%CI: 1.470-3.216, $P < 0.001$; RFS: HR: 2.054; 95%CI: 1.400-3.014, $P < 0.001$).

DISCUSSION

It is difficult to verify and define the quality of surgery, whether assessed on the level of outcome, process, or system[24]. As a tumor-related surgical quality measure, postoperative morbidity has been an increasingly interesting topic. In assessing a potential link between postoperative complications and outcomes in cancer patients, it is necessary to determine the factors leading to postoperative morbidity and the level of morbidity that may result in an unfavorable outcome[25]. Postoperative morbidity, therefore, is an indication of the quality of the surgery and may also act as a reliable prognostication of outcomes with the potential for therapeutic application. Thus, to reduce the incidence of perioperative morbidity, it is important to identify its contributory factors.

Here, we examined the prognostic impacts of 30-d morbidity in 239 HCCA patients after curative resection. The findings showed that perioperative morbidity negatively impacted both OS and RFS, indicating the value of reducing postoperative morbidity to improve patient outcomes. In this study, postoperative morbidity occurred in 146 (61.1%) patients, of which 68 (28.5%) experienced major morbidity. These findings support those of other studies. Hasegawa *et al*[19] observed a major postoperative complication (grade 3 or more) rate of 46.8%[26]. Gerhards *et al*[27] described a postoperative morbidity rate of 65.0% in patients following hemihepatectomy[27], while Dar *et al*[28] observed complications in approximately 66.7% of patients within 90 d[28]. In addition, a study from Japan observed that 21 patients (35.0%) had remarkable postoperative complications, while the presence of complications predicted worse outcomes in intrahepatic cholangiocarcinoma patients[14]. A large-

Table 2 Comparisons of patients' clinicopathologic and operative variables between those with and without postoperative morbidity

Variables	Total (n = 239)	Without postoperative morbidity (n = 93)	With postoperative morbidity (n = 146)	P value
Age > 60 yr	54 (22.6)	22 (23.7)	32 (21.9)	0.754
Male sex	144 (60.3)	54 (58.1)	90 (61.6)	0.581
ASA score > 2	23 (9.6)	6 (6.5)	17 (11.6)	0.185
Obesity	28 (11.7)	4 (4.3)	24 (16.4)	0.004
Diabetes mellitus	24 (10.0)	4 (4.3)	20 (13.7)	0.018
Cirrhosis	39 (16.3)	8 (8.6)	31 (21.2)	0.010
Preoperative CA19-9 > 150 U/L	129 (54.0)	44 (47.3)	85 (58.2)	0.099
Maximum tumor size > 3 cm	68 (25.8)	21 (22.6)	47 (32.2)	0.108
Macrovascular invasion	144 (60.3)	55 (59.1)	89 (61.0)	0.779
Microvascular invasion	85 (35.6)	28 (30.1)	57 (39.0)	0.160
Peripheral nerve invasion	80 (33.5)	30 (32.3)	50 (34.2)	0.751
Poor tumor differentiation	77 (32.2)	29 (31.2)	48 (32.9)	0.785
Intraoperative blood transfusion	159 (66.5)	57 (61.3)	102 (69.9)	0.171
Intraoperative blood loss > 500 mL	185 (77.4)	65 (69.9)	120 (82.2)	0.027
Major hepatectomy	171 (71.5)	65 (69.9)	106 (72.6)	0.651
Hepatic artery reconstruction	12 (5.0)	5 (5.4)	7 (4.8)	0.841
Portal vein reconstruction	45 (19.6)	22 (23.7)	23 (15.8)	0.128
Pringle maneuver	175 (73.2)	73 (78.5)	102 (69.9)	0.142
Number of examined LNs > 4	125 (52.3)	52 (55.9)	73 (50.0)	0.372
LN metastasis	54 (22.6)	18 (19.4)	36 (24.7)	0.339
Bismuth type, III-IV	135 (56.5)	52 (55.9)	83 (56.8)	0.887
Preoperative drainage	71 (29.7)	28 (30.1)	43 (29.5)	0.914

ASA: American Society of Anesthesiologists; CA19-9: Carbohydrate antigen 19-9; LN: Lymph node.

Table 3 Univariable and multivariable logistic regression analyses of risk factors associated with postoperative morbidity following curative resection for hilar cholangiocarcinoma

Variables	Multivariable analyses ¹	
	P value	OR (95%CI)
Obesity	0.023	3.694 (1.197-11.394)
Diabetes mellitus	0.036	3.395 (1.082-10.651)
Cirrhosis	0.017	2.867 (1.207-6.810)
Preoperative CA19-9 > 150 U/L	0.155	1.493 (0.859-2.593)
Intraoperative blood loss > 500 mL	0.016	2.240 (1.162-4.318)

¹Factors with $P < 0.1$ in Table 2 were applied to multiple logistic regression model.
CA19-9: Carbohydrate antigen 19-9; CI: Confidence interval; OR: Odds ratio.

sample multicenter study from China indicated that 758 (35.1%) out of 2161 HCC patients experienced morbidity within 30 d, and the median OS and time-to-recurrence in these patients were poorer (48.1 mo *vs* 91.6 mo and 19.8 mo *vs* 46.1 mo, respectively)[8]. However, no studies have investigated the link between postoperative morbidity and prognosis in HCCA patients.

Table 4 Comparisons of survival outcomes between patients with and without postoperative morbidity

Survival outcomes	Total (n = 239)	Without postoperative morbidity (n = 93)	With postoperative morbidity (n = 146)	P value
Period of follow-up, months ¹	19.0 (11.0, 34.0)	15.0 (23.0, 41.0)	16.0 (9.8, 30.0)	0.001
Death during the follow-up	160 (66.9)	55 (59.1)	105 (71.9)	0.041
Recurrence during the follow-up	172 (72.0)	60 (64.5)	112 (76.7)	0.041
OS, months²	23.0 (20.0-26.0)	31.0 (22.4-39.6)	18.0 (13.0-23.0)	0.003
1-yr OS rate, %	73.4	83.8	66.7	
3-yr OS rate, %	34.0	45.5	26.7	
5-yr OS rate, %	22.9	31.7	17.0	
RFS, month²	19.0 (16.1-21.9)	26.0 (14.1-37.9)	16.0 (12.2-19.8)	0.002
1-yr RFS rate, %	64.6	75.1	54.3	
3-yr RFS rate, %	28.7	40.8	22.4	
5-yr RFS rate, %	18.2	30.4	13.3	

¹Values are median (interquartile range).²Values are median and 95% confidence interval.

OS: Overall survival; RFS: Recurrence-free survival.

Both clinicopathological and operative variables were found to differ significantly in relation to postoperative morbidity, including obesity, diabetes mellitus, cirrhosis, and intraoperative blood loss > 500 mL. Many previous studies have used propensity score matching to balance the intergroup baseline features in evaluating the effect of postoperative complications on outcomes[29,30]. However, as postoperative 30-d morbidity is itself a short-term outcome, it is not appropriate to adopt this statistical approach, which may increase, rather than decrease, selection bias between the groups. In contrast, classical statistical approaches are appropriate to determine the link between postoperative morbidity and outcomes with adjustment for confounding factors.

It is important to identify the risk factors for postoperative morbidity to reduce its incidence. Here, we specifically investigated the independent risk factors for morbidity and identified obesity, diabetes mellitus, cirrhosis, and intraoperative blood loss > 500 mL. These findings are significant for guiding clinical practice. Similar conclusions have been reported; for example, a major morbidity rate of 40% was observed after liver resection in obese or overweight patients[31,32]. There is evidence to explain this phenomenon, namely, hepatic steatosis associated with obesity may adversely affect the regeneration of liver remnants and thus influence morbidity[33]. During the perioperative period, obese patients should be instructed by dietitians to adjust their dietary habits and properly match their nutritional structure. It is known that obesity is closely related to chronic liver diseases, such as steatosis, nonalcoholic steatohepatitis, and other comorbidities, including diabetes[34]. Moreover, the presence of diabetes mellitus is known to be linked to postoperative complications after HCCA surgery [35]. For severe diabetes, the clinician needs to effectively control blood glucose levels before surgery with the assistance of endocrinologists. In addition to the above two risk groups related to metabolism, for patients with cirrhosis, due to their worse liver function, surgeons should evaluate the remaining liver volume and reserve function more carefully before surgery and pay more attention to the prevention of complications, including PHLF, pleural effusion, abdominal hemorrhage, and biliary infection. Notably, cirrhosis may cause poor blood coagulation, making it more difficult to control the amount of bleeding during surgery[36]. For patients with poor liver function and coagulation dysfunction, intraoperative infusion of plasma or cryoprecipitate may help to reduce intraoperative bleeding. For patients with severe liver cirrhosis, the surgeon should use Pringle's maneuver to obstruct the temporary hilar of the liver for hepatectomy. In addition, the anesthetist should ensure low central venous pressure to reduce the amount of bleeding during the surgery. Moreover, the vast majority of intraoperative bleeding occurs during liver resection. With new medical advances, many kinds of instruments can be used for liver resection: Ultrasonic knife, electrocautery (bipolar, monopolar, or water sealed bipolar), and radiofrequency-assisted liver resection. However, which can better prevent intraoperative bleeding may be related to the patient's liver condition and the operator's habits, and it is worthy of further study. As this study showed that postoperative morbidity (especially major morbidity) can affect the oncological prognosis of HCCA after curative resection, adjusting the above risk factors can reduce complications and also improve the prognosis of patients. In our opinion, only through multidisciplinary treatment can we reduce the postoperative morbidity of patients who undergo curative HCCA resection.

Table 5 Univariable and multivariable Cox regression analyses of risk factors associated with overall survival following curative resection for hilar cholangiocarcinoma

Variables	Univariable analyses		Multivariable analyses ¹	
	P value	HR (95%CI)	P value	HR (95%CI)
Age > 60 yr	0.341	1.190 (0.832-1.730)		
Male sex	0.754	1.052 (0.766-1.445)		
ASA score > 2	0.333	1.282 (0.775-2.120)		
Obesity	0.772	0.928 (0.561-1.536)		
Diabetes mellitus	0.063	1.595 (0.975-2.609)	0.288	1.324 (0.789-2.224)
Cirrhosis	0.222	1.283 (0.861-1.912)		
Preoperative CA19-9 > 150 U/L	0.009	1.522 (1.112-2.083)	0.015	1.485 (1.079-2.044)
Maximum tumor size > 3 cm	< 0.001	1.809 (1.296-2.525)	0.001	1.805 (1.290-2.526)
Macrovascular invasion	0.014	1.507 (1.088-2.087)	0.012	1.527 (1.099-2.122)
Microvascular invasion	0.005	1.588 (1.151-2.192)	0.102	1.324 (0.946-1.853)
Peripheral nerve invasion	0.663	1.075 (0.776-1.488)		
Poor tumor differentiation	0.005	1.608 (1.158-2.231)	0.003	1.654 (1.188-2.302)
Intraoperative blood transfusion	0.316	1.186 (0.850-1.654)		
Intraoperative blood loss > 500 mL	0.593	1.108 (0.761-1.612)		
Major hepatectomy	0.634	1.087 (0.771-1.531)		
LN metastasis	0.016	1.551 (1.086-2.215)	0.021	1.527 (1.067-2.186)
Bismuth type, III-IV	0.346	1.163 (0.849-1.593)		
Preoperative drainage	0.721	0.939 (0.665-1.326)		
Postoperative morbidity	0.003	1.635 (1.178-2.269)	0.009	1.557 (1.119-2.167)

¹Those variables found significant at $P < 0.100$ in univariable analyses were entered into multivariable Cox regression analyses.

ASA: American Society of Anesthesiologists; CA19-9: Carbohydrate antigen 19-9; CI: Confidence interval; HR: Hazard ratio; LN: Lymph node.

In other cancers, postoperative morbidity may be an independent predictor of poor prognostic outcome, including colorectal liver metastasis[37], HCC[8,38,39], pancreatic cancer[40], and esophageal cancer[41]. Although the precise association between postoperative morbidity and unfavorable prognostic outcomes remains to be elucidated, there are several possible explanations. Previous studies have shown that major surgery can induce systemic inflammation, with increased secretion of inflammatory cytokines, including interleukin-1 and interleukin-6, which contributes to cancer angiogenesis, proliferation, growth, and metastases[42-44]. In addition, severe systematic inflammation caused by postoperative morbidity may lead to an immunosuppressive condition and state, which can regulate the reduction of tumor monitoring and may lead to both metastasis and disease-specific death[15,42]. Notably, the postoperative stress response can inhibit cell-mediated immune function. Consequently, during the period of postoperative morbidity and relative immunosuppression caused by postoperative stress, residual malignant cells may proliferate[45]. Therefore, postoperative 30-d morbidity may negatively impact long-term oncological outcomes.

There are several limitations to this study. Specifically, it was a single-institution study with a retrospective design. Despite this, the database was established by standardized surgical techniques and perioperative management, thus preventing some limitations of multicenter, population-based, or national studies. Nevertheless, the impact of postoperative morbidity on the prognosis of HCCA patients still requires evaluation using a larger prospective study. In addition, in this study, patients who received adjuvant chemotherapy and radiotherapy were excluded. Some previous studies have demonstrated a benefit of prognosis for patients following surgery who received postoperative adjuvant therapy[46,47]. However, adjuvant therapy cannot be administered immediately when morbidities occur after surgery. As a result, we believed it was better to exclude patients who received adjuvant therapy to more accurately reflect the impact of postoperative complications on prognosis.

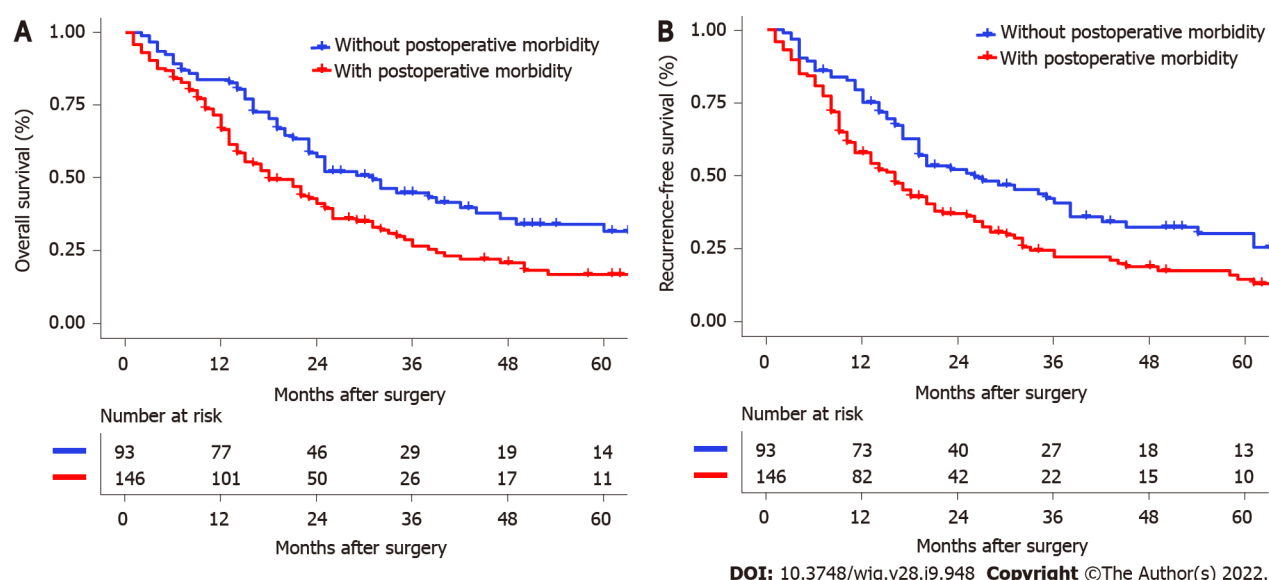


Figure 2 Overall survival and recurrence-free survival curve comparisons between patients without and with postoperative morbidity. A: Overall survival, $P = 0.003$; B: Recurrence-free survival, $P = 0.002$.

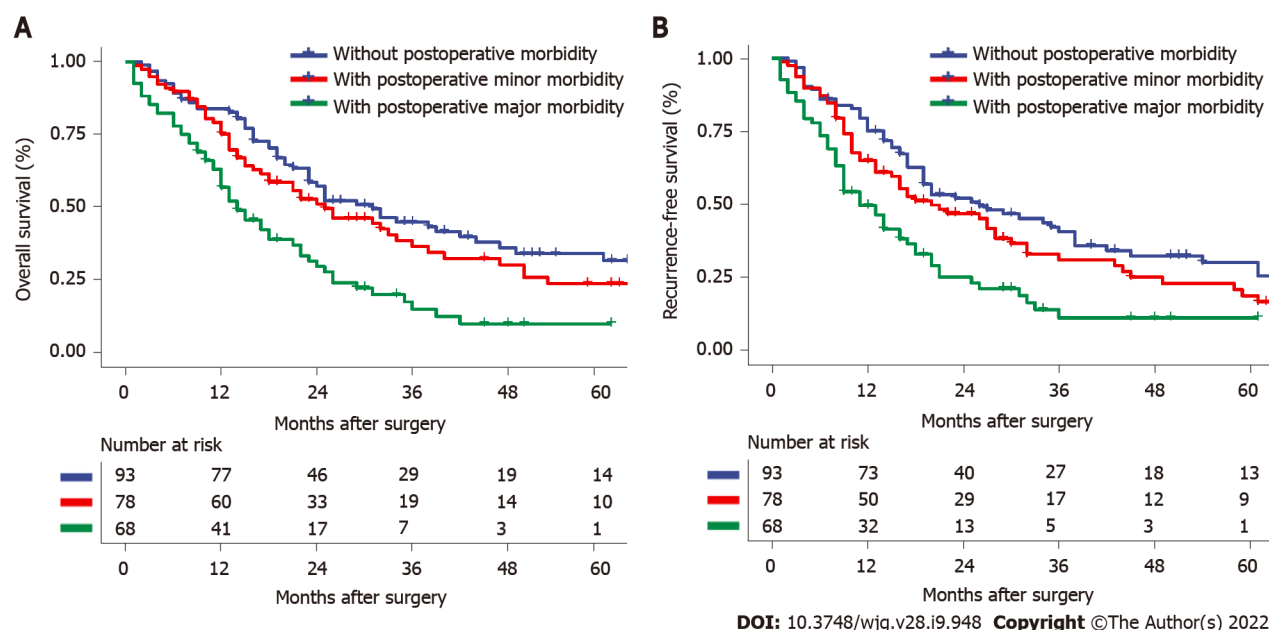


Figure 3 Overall survival and recurrence-free survival curve comparisons among patients without postoperative morbidity, with minor postoperative morbidity, and with major postoperative morbidity. A: Overall survival, $P = 0.231$ (with minor postoperative morbidity vs without postoperative morbidity), $P < 0.001$ (with major postoperative morbidity vs without postoperative morbidity); B: Recurrence-free survival, $P = 0.132$ (with minor postoperative morbidity vs without postoperative morbidity), $P < 0.001$ (with major postoperative morbidity vs without postoperative morbidity).

CONCLUSION

In summary, the results of this study clearly show that postoperative morbidity both lessens long-term survival and raises tumor recurrence in HCCA patients following curative resection. Independent risk factors for postoperative morbidity included diabetes, obesity, liver cirrhosis, and intraoperative blood loss > 500 mL. Clinicians should further optimize preoperative management, surgical procedures, and perioperative care to prevent complications and thus improve both short-term and long-term oncological prognoses.

Table 6 Univariable and multivariable Cox regression analyses of risk factors associated with recurrence-free survival following curative resection for hilar cholangiocarcinoma

Variables	Univariable analyses		Multivariable analyses ¹	
	P value	HR (95%CI)	P value	HR (95%CI)
Age > 60 yr	0.330	1.201 (0.850-1.696)		
Male sex	0.998	1.002 (0.793-1.136)		
ASA score > 2	0.457	1.210 (0.732-1.997)		
Obesity	0.911	0.973 (0.604-1.568)		
Diabetes mellitus	0.035	1.654 (1.036-2.264)	0.177	1.403 (0.858-2.295)
Cirrhosis	0.247	1.260 (0.852-1.863)		
Preoperative CA19-9 > 150 U/L	0.002	1.617 (1.193-2.192)	0.012	1.487 (1.092-2.024)
Maximum tumor size > 3 cm	0.002	1.695 (1.223-2.351)	0.002	1.665 (1.198-2.314)
Macrovascular invasion	0.008	1.534 (1.120-2.100)	0.011	1.514 (1.101-2.081)
Microvascular invasion	0.009	1.524 (1.118-2.088)	0.121	1.295 (0.934-1.794)
Peripheral nerve invasion	0.683	1.068 (0.780-1.462)		
Poor tumor differentiation	0.007	1.547 (1.124-2.129)	0.006	1.575 (1.141-2.173)
Intraoperative blood transfusion	0.251	1.208 (0.875-1.668)		
Intraoperative blood loss > 500 mL	0.819	1.043 (0.729-1.490)		
Major hepatectomy	0.978	0.995 (0.718-1.379)		
LN metastasis	0.010	1.573 (1.114-2.220)	0.017	1.528 (1.080-2.157)
Bismuth type, III-IV	0.788	1.042 (0.771-1.410)		
Preoperative drainage	0.517	0.895 (0.640-1.252)		
Postoperative morbidity	0.003	1.169 (1.180-2.220)	0.008	1.535 (1.117-2.108)

¹Those variables found significant at $P < 0.100$ in univariable analyses were entered into multivariable Cox regression analyses.

ASA: American Society of Anesthesiologists; CA19-9: Carbohydrate antigen 19-9; CI: Confidence interval; HR: Hazard ratio; LN: Lymph node.

ARTICLE HIGHLIGHTS

Research background

Postoperative complications after surgery for hilar cholangiocarcinoma (HCCA) are common; but, whether it has an adverse impact on oncological prognosis is still unknown.

Research motivation

Our study aimed to determine whether there is an association between the presence of postoperative complication and oncological prognosis following surgery for HCCA. Moreover, our study assessed the independent risk factors for the occurrence of postoperative complication.

Research objectives

We aimed to evaluate the influence of postoperative morbidity on tumor recurrence and mortality after curative resection for HCCA.

Research methods

Patients with diagnosed HCCA following curative resection between January 2010 and December 2017 at our hospital were enrolled. The independent risk factors for postoperative complication within 30 d after surgery were investigated, and links between postoperative morbidity and patient characteristics and survival outcomes were assessed. Postoperative morbidities were divided into five grades according to the Clavien-Dindo classification, and major morbidities were defined as Clavien-Dindo ≥ 3 . Univariate and multivariate Cox regression analyses were used to evaluate the risk factors for recurrence-free survival (RFS) and overall survival (OS).

Research results

Postoperative complication occurred in 146 out of 239 patients (61.1%). Multivariate logistic regression revealed that cirrhosis, intraoperative blood loss > 500 mL, diabetes mellitus, and obesity were independently associated with postoperative complication. And, postoperative complication was associated with decreased OS and RFS (OS: 18.0 mo *vs* 31.0 mo, respectively, $P = 0.003$; RFS: 16.0 mo *vs* 26.0 mo, respectively, $P = 0.002$). Multivariate Cox regression analysis indicated that postoperative morbidity was independently associated with decreased OS [hazard ratios (HR): 1.557, 95% confidence interval (CI): 1.119-2.167, $P = 0.009$] and RFS (HR: 1.535, 95%CI: 1.117-2.108, $P = 0.008$). Moreover, major morbidity was independently associated with decreased OS (HR: 2.175; 95%CI: 1.470-3.216, $P < 0.001$) and RFS (HR: 2.054; 95%CI: 1.400-3.014, $P < 0.001$) after curative resection for HCCA.

Research conclusions

Postoperative complication (especially major complication) may be independently associated with poor prognosis in HCCA patients following curative resection.

Research perspectives

Clinicians should further optimize preoperative management, surgical procedures, and perioperative care to prevent complications and thus improve both short-term and long-term oncological prognoses.

FOOTNOTES

Author contributions: Dai HS had full access to all the data in the study and take responsibility for the integrity of the data and accuracy of the data analyses; Liu ZP, Chen ZY, Zhang YQ, Chen WY, Bai J, and Jiang Y contributed to the study concept and design; Liu ZP, Chen ZY, Zhang YQ, Chen WY, Zhong SY, Zhong YP, and Pan Y contributed to the acquisition, analyses, or interpretation of data; Liu ZP, Dai HS, Chen ZY, and Zhang YQ drafted the manuscript; Dai HS, Chen ZY, and Zhang YQ contributed to the critical revision of the manuscript for the important intellectual content; Liu ZP, Dai HS, and Zhang YQ performed the statistical analyses; Dai HS contributed to the study supervision.

Supported by National Natural Science Foundation of China, No. 81874211; and Personalized Training of Key Support Objects for The Talent People of The Army Medical University, No. XZ-2019-505-014.

Institutional review board statement: The study was approved by the Institutional Review Board of the South-West Hospital of Chongqing, China, No. KY2021129.

Conflict-of-interest statement: Nothing to disclose.

Data sharing statement: Technical appendix, statistical code, and dataset available from the corresponding author at daihaisu@163.com. Participants gave informed consent for data sharing.

Open-Access: This article is an open-access article that was selected by an in-house editor and fully peer-reviewed by external reviewers. It is distributed in accordance with the Creative Commons Attribution NonCommercial (CC BY-NC 4.0) license, which permits others to distribute, remix, adapt, build upon this work non-commercially, and license their derivative works on different terms, provided the original work is properly cited and the use is non-commercial. See: <https://creativecommons.org/licenses/by-nc/4.0/>

Country/Territory of origin: China

ORCID number: Zhi-Peng Liu 0000-0001-7652-1783; Wei-Yue Chen 0000-0001-6922-8888; Yan-Qi Zhang 0000-0001-9438-0953; Yan Jiang 0000-0003-4628-7150; Jie Bai 0000-0003-3031-8434; Yu Pan 0000-0003-3827-2418; Shi-Yun Zhong 0000-0001-7148-8777; Yun-Ping Zhong 0000-0001-9027-6104; Zhi-Yu Chen 0000-0002-1321-1793; Hai-Su Dai 0000-0001-9896-6249.

S-Editor: Fan JR

L-Editor: A

P-Editor: Fan JR

REFERENCES

- 1 Blechacz B. Cholangiocarcinoma: Current Knowledge and New Developments. *Gut Liver* 2017; **11**: 13-26 [PMID: 27928095 DOI: 10.5009/gnl15568]
- 2 Robles R, Sánchez-Bueno F, Ramírez P, Brusadin R, Parrilla P. Liver transplantation for hilar cholangiocarcinoma. *World J Gastroenterol* 2013; **19**: 9209-9215 [PMID: 24409049 DOI: 10.3748/wjg.v19.i48.9209]
- 3 Klatskin G. Adenocarcinoma of the hepatic duct at its bifurcation within the porta hepatis. An unusual tumor with

- distinctive clinical and pathological features. *Am J Med* 1965; **38**: 241-256 [PMID: [14256720](#) DOI: [10.1016/0002-9343\(65\)90178-6](#)]
- 4 **Ramos Rubio E.** [Radical surgery for hilar cholangiocarcinoma (Klatskin tumor)]. *Cir Esp* 2007; **82**: 11-15 [PMID: [17580025](#) DOI: [10.1016/s0009-739x\(07\)71654-8](#)]
 - 5 **Lau SH, Lau WY.** Current therapy of hilar cholangiocarcinoma. *Hepatobiliary Pancreat Dis Int* 2012; **11**: 12-17 [PMID: [22251465](#) DOI: [10.1016/s1499-3872\(11\)60119-7](#)]
 - 6 **Hu HJ, Jin YW, Shrestha A, Ma WJ, Wang JK, Liu F, Zhu YY, Zhou RX, Regmi P, Cheng NS, Li FY.** Predictive factors of early recurrence after R0 resection of hilar cholangiocarcinoma: A single institution experience in China. *Cancer Med* 2019; **8**: 1567-1575 [PMID: [30868740](#) DOI: [10.1002/cam4.2052](#)]
 - 7 **Liu ZP, Zhang QY, Chen WY, Huang YY, Zhang YQ, Gong Y, Jiang Y, Bai J, Chen ZY, Dai HS.** Evaluation of Four Lymph Node Classifications for the Prediction of Survival in Hilar Cholangiocarcinoma. *J Gastrointest Surg* 2022 [PMID: [34973138](#) DOI: [10.1007/s11605-021-05211-x](#)]
 - 8 **Li LQ, Liang L, Sun LY, Li C, Wu H, Zhang YM, Zhang WG, Wang H, Zhou YH, Gu WM, Chen TH, Li J, Liang YJ, Xu QR, Diao YK, Jia HD, Wang MD, Zhang CW, Shen F, Huang DS, Yang T.** Postoperative morbidity adversely impacts long-term oncologic prognosis following hepatectomy for hepatocellular carcinoma: A multicenter observational study. *Eur J Surg Oncol* 2021; **47**: 2551-2560 [PMID: [33934940](#) DOI: [10.1016/j.ejso.2021.04.027](#)]
 - 9 **Ridwelski K, Meyer F, Schmidt U, Lippert H.** [Results of surgical treatment in ampullary and pancreatic carcinoma and its prognostic parameters after R0-resection]. *Zentralbl Chir* 2005; **130**: 353-361 [PMID: [16103961](#) DOI: [10.1055/s-2005-836794](#)]
 - 10 **Li QG, Li P, Tang D, Chen J, Wang DR.** Impact of postoperative complications on long-term survival after radical resection for gastric cancer. *World J Gastroenterol* 2013; **19**: 4060-4065 [PMID: [23840153](#) DOI: [10.3748/wjg.v19.i25.4060](#)]
 - 11 **Kanda M, Ito S, Mochizuki Y, Teramoto H, Ishigure K, Murai T, Asada T, Ishiyama A, Matsushita H, Tanaka C, Kobayashi D, Fujiwara M, Murotani K, Kodera Y.** Multi-institutional analysis of the prognostic significance of postoperative complications after curative resection for gastric cancer. *Cancer Med* 2019; **8**: 5194-5201 [PMID: [31353821](#) DOI: [10.1002/cam4.2439](#)]
 - 12 **Zimmermann MS, Wellner U, Laubert T, Ellebrecht DB, Bruch HP, Keck T, Schlöricke E, Benecke CR.** Influence of Anastomotic Leak After Elective Colorectal Cancer Resection on Survival and Local Recurrence: A Propensity Score Analysis. *Dis Colon Rectum* 2019; **62**: 286-293 [PMID: [30540662](#) DOI: [10.1097/DCR.0000000000001287](#)]
 - 13 **Nordholm-Carstensen A, Rolff HC, Krarup PM.** Differential Impact of Anastomotic Leak in Patients With Stage IV Colonic or Rectal Cancer: A Nationwide Cohort Study. *Dis Colon Rectum* 2017; **60**: 497-507 [PMID: [28383449](#) DOI: [10.1097/DCR.0000000000000761](#)]
 - 14 **Miyata T, Yamashita YI, Yamao T, Umezaki N, Tsukamoto M, Kitano Y, Yamamura K, Arima K, Kaida T, Nakagawa S, Imai K, Hashimoto D, Chikamoto A, Ishiko T, Baba H.** Prognostic impacts of postoperative complications in patients with intrahepatic cholangiocarcinoma after curative operations. *Int J Clin Oncol* 2017; **22**: 526-532 [PMID: [28205002](#) DOI: [10.1007/s10147-017-1099-9](#)]
 - 15 **Balkwill F, Mantovani A.** Inflammation and cancer: back to Virchow? *Lancet* 2001; **357**: 539-545 [PMID: [11229684](#) DOI: [10.1016/S0140-6736\(00\)04046-0](#)]
 - 16 **van Keulen AM, Buettner S, Besselink MG, Busch OR, van Gulik TM, Ijzermans JNM, de Jonge J, Polak WG, Swijnenburg RJ, Groot Koerkamp B, Erdmann JJ, Olthof PB.** Surgical morbidity in the first year after resection for perihilar cholangiocarcinoma. *HPB (Oxford)* 2021; **23**: 1607-1614 [PMID: [33947606](#) DOI: [10.1016/j.hpb.2021.03.016](#)]
 - 17 **Ribero D, Zimmiti G, Aloia TA, Shindoh J, Fabio F, Amisano M, Passot G, Ferrero A, Vauthey JN.** Preoperative Cholangitis and Future Liver Remnant Volume Determine the Risk of Liver Failure in Patients Undergoing Resection for Hilar Cholangiocarcinoma. *J Am Coll Surg* 2016; **223**: 87-97 [PMID: [27049784](#) DOI: [10.1016/j.jamcollsurg.2016.01.060](#)]
 - 18 **Kennedy TJ, Yopp A, Qin Y, Zhao B, Guo P, Liu F, Schwartz LH, Allen P, D'Angelica M, Fong Y, DeMatteo RP, Blumgart LH, Jarnagin WR.** Role of preoperative biliary drainage of liver remnant prior to extended liver resection for hilar cholangiocarcinoma. *HPB (Oxford)* 2009; **11**: 445-451 [PMID: [19768150](#) DOI: [10.1111/j.1477-2574.2009.00090.x](#)]
 - 19 **Hasegawa S, Ikai I, Fujii H, Hatano E, Shimahara Y.** Surgical resection of hilar cholangiocarcinoma: analysis of survival and postoperative complications. *World J Surg* 2007; **31**: 1256-1263 [PMID: [17453285](#) DOI: [10.1007/s00268-007-9001-y](#)]
 - 20 **Wang JK, Hu HJ, Shrestha A, Ma WJ, Yang Q, Liu F, Cheng NS, Li FY.** Can preoperative and postoperative CA19-9 levels predict survival and early recurrence in patients with resectable hilar cholangiocarcinoma? *Oncotarget* 2017; **8**: 45335-45344 [PMID: [28484084](#) DOI: [10.18632/oncotarget.17336](#)]
 - 21 **Dindo D, Demartines N, Clavien PA.** Classification of surgical complications: a new proposal with evaluation in a cohort of 6336 patients and results of a survey. *Ann Surg* 2004; **240**: 205-213 [PMID: [15273542](#) DOI: [10.1097/01.sla.0000133083.54934.ae](#)]
 - 22 **Balzan S, Belghiti J, Farges O, Ogata S, Sauvanet A, Delefosse D, Durand F.** The "50-50 criteria" on postoperative day 5: an accurate predictor of liver failure and death after hepatectomy. *Ann Surg* 2005; **242**: 824-828, discussion 828 [PMID: [16327492](#) DOI: [10.1097/01.sla.0000189131.90876.9e](#)]
 - 23 **National Nosocomial Infections Surveillance System.** National Nosocomial Infections Surveillance (NNIS) System Report, data summary from January 1992 through June 2004, issued October 2004. *Am J Infect Control* 2004; **32**: 470-485 [PMID: [15573054](#) DOI: [10.1016/S0196655304005425](#)]
 - 24 **Takahashi Y, Ebata T, Yokoyama Y, Igami T, Sugawara G, Nagino M.** Surgical treatment of perihilar cholangiocarcinoma in octogenarians: a single center experience. *J Hepatobiliary Pancreat Sci* 2013; **20**: 324-331 [PMID: [22706427](#) DOI: [10.1007/s00534-012-0529-3](#)]
 - 25 **Best WR, Khuri SF, Phelan M, Hur K, Henderson WG, Demakis JG, Daley J.** Identifying patient preoperative risk factors and postoperative adverse events in administrative databases: results from the Department of Veterans Affairs National Surgical Quality Improvement Program. *J Am Coll Surg* 2002; **194**: 257-266 [PMID: [11893128](#) DOI: [10.1016/s1072-7515\(01\)01183-8](#)]
 - 26 **Zhu WH, Xie WY, Zhang ZD, Li S, Zhang DF, Liu YJ, Zhu JY, Leng XS.** Postoperative Complications and Survival

- Analysis of Surgical Resection for Hilar Cholangiocarcinoma: A Retrospective Study of Fifty-Nine Consecutive Patients. *Chin Med Sci J* 2020; **35**: 157-169 [PMID: [32684236](#) DOI: [10.24920/003565](#)]
- 27 **Gerhards MF**, van Gulik TM, de Wit LT, Obertop H, Gouma DJ. Evaluation of morbidity and mortality after resection for hilar cholangiocarcinoma—a single center experience. *Surgery* 2000; **127**: 395-404 [PMID: [10776430](#) DOI: [10.1067/msy.2000.104250](#)]
- 28 **Dar FS**, Atiq M, Shahzadi N, Ainy SK, Rana A, Bhatti ABH. Outcomes after Surgical Resection of Hilar Cholangiocarcinoma. *J Coll Physicians Surg Pak* 2019; **29**: 874-877 [PMID: [31455485](#) DOI: [10.29271/jcpsp.2019.09.874](#)]
- 29 **Tam V**, Luketich JD, Winger DG, Sarkaria IS, Levy RM, Christie NA, Awais O, Shende MR, Nason KS. Cancer Recurrence After Esophagectomy: Impact of Postoperative Infection in Propensity-Matched Cohorts. *Ann Thorac Surg* 2016; **102**: 1638-1646 [PMID: [27353482](#) DOI: [10.1016/j.athoracsur.2016.04.097](#)]
- 30 **Memeo R**, de Blasi V, Adam R, Goéré D, Laurent A, de'Angelis N, Piardi T, Lermite E, Herrero A, Navarro F, Sa Cunha A, Pessaux P; French colorectal liver metastases working group - Association Française de Chirurgie (AFC). Postoperative Infectious Complications Impact Long-Term Survival in Patients Who Underwent Hepatectomies for Colorectal Liver Metastases: a Propensity Score Matching Analysis. *J Gastrointest Surg* 2018; **22**: 2045-2054 [PMID: [29992519](#) DOI: [10.1007/s11605-018-3854-2](#)]
- 31 **Langella S**, Russolillo N, Forchino F, Lo Tesoriere R, D'Eletto M, Ferrero A. Impact of obesity on postoperative outcome of hepatic resection for colorectal metastases. *Surgery* 2015; **158**: 1521-1529 [PMID: [26297057](#) DOI: [10.1016/j.surg.2015.07.024](#)]
- 32 **Balzan S**, Nagarajan G, Farges O, Galleano CZ, Dokmak S, Paugam C, Belghiti J. Safety of liver resections in obese and overweight patients. *World J Surg* 2010; **34**: 2960-2968 [PMID: [20711580](#) DOI: [10.1007/s00268-010-0756-1](#)]
- 33 **Paternostro R**, Sieghart W, Trauner M, Pinter M. Cancer and hepatic steatosis. *ESMO Open* 2021; **6**: 100185 [PMID: [34139486](#) DOI: [10.1016/j.esmoop.2021.100185](#)]
- 34 **Pi-Sunyer FX**. Medical hazards of obesity. *Ann Intern Med* 1993; **119**: 655-660 [PMID: [8363192](#) DOI: [10.7326/0003-4819-119-7_part_2-199310011-00006](#)]
- 35 **Kanekiyo S**, Takeda S, Iida M, Nishiyama M, Kitahara M, Shindo Y, Tokumitsu Y, Tomochika S, Tsunedomi R, Suzuki N, Abe T, Yoshino S, Hazama S, Ueno T, Nagano H. Efficacy of perioperative immunonutrition in esophageal cancer patients undergoing esophagectomy. *Nutrition* 2019; **59**: 96-102 [PMID: [30468936](#) DOI: [10.1016/j.nut.2018.08.006](#)]
- 36 **Hackl C**, Schlitt HJ, Renner P, Lang SA. Liver surgery in cirrhosis and portal hypertension. *World J Gastroenterol* 2016; **22**: 2725-2735 [PMID: [26973411](#) DOI: [10.3748/wjg.v22.i9.2725](#)]
- 37 **Matsuda A**, Matsumoto S, Seya T, Matsutani T, Kishi T, Yokoi K, Wang P, Uchida E. Does postoperative complication have a negative impact on long-term outcomes following hepatic resection for colorectal liver metastasis? *Ann Surg Oncol* 2013; **20**: 2485-2492 [PMID: [23620215](#) DOI: [10.1245/s10434-013-2972-z](#)]
- 38 **Chok KS**, Ng KK, Poon RT, Lo CM, Fan ST. Impact of postoperative complications on long-term outcome of curative resection for hepatocellular carcinoma. *Br J Surg* 2009; **96**: 81-87 [PMID: [19065644](#) DOI: [10.1002/bjs.6358](#)]
- 39 **Kusano T**, Sasaki A, Kai S, Endo Y, Iwaki K, Shibata K, Ohta M, Kitano S. Predictors and prognostic significance of operative complications in patients with hepatocellular carcinoma who underwent hepatic resection. *Eur J Surg Oncol* 2009; **35**: 1179-1185 [PMID: [19443173](#) DOI: [10.1016/j.ejso.2009.04.008](#)]
- 40 **Aoyama T**, Murakawa M, Katayama Y, Yamaoku K, Kanazawa A, Higuchi A, Shiozawa M, Morimoto M, Yoshikawa T, Yamamoto N, Rino Y, Masuda M, Morinaga S. Impact of postoperative complications on survival and recurrence in pancreatic cancer. *Anticancer Res* 2015; **35**: 2401-2409 [PMID: [25862906](#)]
- 41 **Li KK**, Wang YJ, Liu XH, Tan QY, Jiang YG, Guo W. The effect of postoperative complications on survival of patients after minimally invasive esophagectomy for esophageal cancer. *Surg Endosc* 2017; **31**: 3475-3482 [PMID: [27924395](#) DOI: [10.1007/s00464-016-5372-1](#)]
- 42 **Wortel CH**, van Deventer SJ, Aarden LA, Lygidakis NJ, Büller HR, Hoek FJ, Horikx J, ten Cate JW. Interleukin-6 mediates host defense responses induced by abdominal surgery. *Surgery* 1993; **114**: 564-570 [PMID: [7690162](#)]
- 43 **Elaraj DM**, Weinreich DM, Varghese S, Puhlmann M, Hewitt SM, Carroll NM, Feldman ED, Turner EM, Alexander HR. The role of interleukin 1 in growth and metastasis of human cancer xenografts. *Clin Cancer Res* 2006; **12**: 1088-1096 [PMID: [16489061](#) DOI: [10.1158/1078-0432.CCR-05-1603](#)]
- 44 **Wong VK**, Malik HZ, Hamady ZZ, Al-Mukhtar A, Gomez D, Prasad KR, Toogood GJ, Lodge JP. C-reactive protein as a predictor of prognosis following curative resection for colorectal liver metastases. *Br J Cancer* 2007; **96**: 222-225 [PMID: [17211465](#) DOI: [10.1038/sj.bjc.6603558](#)]
- 45 **McDonald B**, Spicer J, Giannais B, Fallavollita L, Brodt P, Ferri LE. Systemic inflammation increases cancer cell adhesion to hepatic sinusoids by neutrophil mediated mechanisms. *Int J Cancer* 2009; **125**: 1298-1305 [PMID: [19431213](#) DOI: [10.1002/ijc.24409](#)]
- 46 **Grendar J**, Grendarova P, Sinha R, Dixon E. Neoadjuvant therapy for downstaging of locally advanced hilar cholangiocarcinoma: a systematic review. *HPB (Oxford)* 2014; **16**: 297-303 [PMID: [23981000](#) DOI: [10.1111/hpb.12150](#)]
- 47 **Gerhards MF**, van Gulik TM, González González D, Rauws EA, Gouma DJ. Results of postoperative radiotherapy for resectable hilar cholangiocarcinoma. *World J Surg* 2003; **27**: 173-179 [PMID: [12616432](#) DOI: [10.1007/s00268-002-6434-1](#)]



Published by **Baishideng Publishing Group Inc**
7041 Koll Center Parkway, Suite 160, Pleasanton, CA 94566, USA

Telephone: +1-925-3991568

E-mail: bpgoffice@wjgnet.com

Help Desk: <https://www.f6publishing.com/helpdesk>

<https://www.wjgnet.com>

