

World Journal of *Gastroenterology*

World J Gastroenterol 2023 August 28; 29(32): 4815-4919



GUIDELINES

- 4815 International experts consensus guidelines on robotic liver resection in 2023

Liu R, Abu Hilal M, Wakabayashi G, Han HS, Palanivelu C, Boggi U, Hackert T, Kim HJ, Wang XY, Hu MG, Choi GH, Panaro F, He J, Efanov M, Yin XY, Croner RS, Fong YM, Zhu JY, Wu Z, Sun CD, Lee JH, Marino MV, Ganpati IS, Zhu P, Wang ZZ, Yang KH, Fan J, Chen XP, Lau WY

REVIEW

- 4831 Non-alcoholic fatty liver disease: Immunological mechanisms and current treatments

Petagine L, Zariwala MG, Patel VB

MINIREVIEWS

- 4851 Role of non-*Helicobacter pylori* gastric Helicobacters in *helicobacter pylori*-negative gastric mucosa-associated lymphoid tissue lymphoma

Lemos FFB, Silva Luz M, Rocha Pinheiro SL, Teixeira KN, Freire de Melo F

ORIGINAL ARTICLE

Basic Study

- 4860 Linolenic acid-metronidazole inhibits the growth of *Helicobacter pylori* through oxidation

Zhou WT, Dai YY, Liao LJ, Yang SX, Chen H, Zhao JL, Huang YQ, Huang L

Retrospective Cohort Study

- 4873 Validation of the albumin-bilirubin score for identifying decompensation risk in patients with compensated cirrhosis

Navadurong H, Thanapirom K, Wejnaruemarn S, Prasoppakakorn T, Chaiteerakij R, Komolmit P, Treeprasertsuk S

- 4883 Different oncological features of colorectal cancer codon-specific KRAS mutations: Not codon 13 but codon 12 have prognostic value

Ahn HM, Kim DW, Oh HJ, Kim HK, Lee HS, Lee TG, Shin HR, Yang IJ, Lee J, Suh JW, Oh HK, Kang SB

- 4900 Hepatitis B virus infection in patients with Wilson disease: A large retrospective study

Zhou HY, Yang X, Luo KZ, Jiang YF, Wang WL, Liang J, Li MM, Luo HY

CASE REPORT

- 4912 Drug-induced entero-colitis due to interleukin-17 inhibitor use; capsule endoscopic findings and pathological characteristics: A case report

Saito K, Yoza K, Takeda S, Shimoyama Y, Takeuchi K

ABOUT COVER

Editorial Board of *World Journal of Gastroenterology*, Haruhiko Sugimura, MD, PhD, Director, Sasaki Institute, Sasaki Foundation, Tokyo 101-0062, Japan. hsugimur@po.kyoundo.jp

AIMS AND SCOPE

The primary aim of *World Journal of Gastroenterology* (WJG, *World J Gastroenterol*) is to provide scholars and readers from various fields of gastroenterology and hepatology with a platform to publish high-quality basic and clinical research articles and communicate their research findings online. WJG mainly publishes articles reporting research results and findings obtained in the field of gastroenterology and hepatology and covering a wide range of topics including gastroenterology, hepatology, gastrointestinal endoscopy, gastrointestinal surgery, gastrointestinal oncology, and pediatric gastroenterology.

INDEXING/ABSTRACTING

The WJG is now abstracted and indexed in Science Citation Index Expanded (SCIE, also known as SciSearch®), Current Contents/Clinical Medicine, Journal Citation Reports, Index Medicus, MEDLINE, PubMed, PubMed Central, Scopus, Reference Citation Analysis, China National Knowledge Infrastructure, China Science and Technology Journal Database, and Superstar Journals Database. The 2023 edition of Journal Citation Reports® cites the 2022 impact factor (IF) for WJG as 4.3; IF without journal self cites: 4.1; 5-year IF: 5.3; Journal Citation Indicator: 0.82; Ranking: 33 among 93 journals in gastroenterology and hepatology; and Quartile category: Q2. The WJG's CiteScore for 2021 is 8.3 and Scopus CiteScore rank 2022: Gastroenterology is 22/149.

RESPONSIBLE EDITORS FOR THIS ISSUE

Production Editor: *Yun-Xi Chen*; Production Department Director: *Xu Guo*; Editorial Office Director: *Jia-Ru Fan*.

NAME OF JOURNAL

World Journal of Gastroenterology

ISSN

ISSN 1007-9327 (print) ISSN 2219-2840 (online)

LAUNCH DATE

October 1, 1995

FREQUENCY

Weekly

EDITORS-IN-CHIEF

Andrzej S Tarnawski

EDITORIAL BOARD MEMBERS

<http://www.wjgnet.com/1007-9327/editorialboard.htm>

PUBLICATION DATE

August 28, 2023

COPYRIGHT

© 2023 Baishideng Publishing Group Inc

INSTRUCTIONS TO AUTHORS

<https://www.wjgnet.com/bpg/gerinfo/204>

GUIDELINES FOR ETHICS DOCUMENTS

<https://www.wjgnet.com/bpg/GerInfo/287>

GUIDELINES FOR NON-NATIVE SPEAKERS OF ENGLISH

<https://www.wjgnet.com/bpg/gerinfo/240>

PUBLICATION ETHICS

<https://www.wjgnet.com/bpg/GerInfo/288>

PUBLICATION MISCONDUCT

<https://www.wjgnet.com/bpg/gerinfo/208>

ARTICLE PROCESSING CHARGE

<https://www.wjgnet.com/bpg/gerinfo/242>

STEPS FOR SUBMITTING MANUSCRIPTS

<https://www.wjgnet.com/bpg/GerInfo/239>

ONLINE SUBMISSION

<https://www.f6publishing.com>



International experts consensus guidelines on robotic liver resection in 2023

Rong Liu, Mohammed Abu Hilal, Go Wakabayashi, Ho-Seong Han, Chinnusamy Palanivelu, Ugo Boggi, Thilo Hackert, Hong-Jin Kim, Xiao-Ying Wang, Ming-Gen Hu, Gi Hong Choi, Fabrizio Panaro, Jin He, Mikhail Efanov, Xiao-Yu Yin, Roland S Croner, Yu-Man Fong, Ji-Ye Zhu, Zheng Wu, Chuan-Dong Sun, Jae Hoon Lee, Marco V Marino, Iyer Shridhar Ganapati, Peng Zhu, Zi-Zheng Wang, Ke-Hu Yang, Jia Fan, Xiao-Ping Chen, Wan Yee Lau

Specialty type: Surgery

Provenance and peer review:

Unsolicited article; Externally peer reviewed.

Peer-review model: Single blind

Peer-review report's scientific quality classification

Grade A (Excellent): A, A
Grade B (Very good): B
Grade C (Good): 0
Grade D (Fair): 0
Grade E (Poor): 0

P-Reviewer: Goja S, India;
Montasser IF, Egypt; Morise Z,
Japan

Received: June 5, 2023

Peer-review started: June 5, 2023

First decision: July 8, 2023

Revised: July 22, 2023

Accepted: August 9, 2023

Article in press: August 9, 2023

Published online: August 28, 2023



Rong Liu, Ming-Gen Hu, Faculty of Hepato-Pancreato-Biliary Surgery, The First Medical Center of Chinese PLA General Hospital, Beijing 100000, China

Mohammed Abu Hilal, Hepatobiliary Pancreatic, Robotic & Laparoscopic Surgery, Poliambulanza Foundation Hospital, Brescia 25100, Italy

Go Wakabayashi, Center for Advanced Treatment of HBP Diseases, Ageo Central General Hospital, Saitama 362-0075, Japan

Ho-Seong Han, Department of Surgery, Seoul National University Bundang Hospital, Seoul National University College of Medicine, Seoul 03080, South Korea

Chinnusamy Palanivelu, GEM Hospital & Research Centre, GEM Hospital & Research Centre, Coimbatore 641045, India

Ugo Boggi, Division of General and Transplant Surgery, University of Pisa, Pisa 56126, Italy

Thilo Hackert, Department of General, Visceral and Thoracic Surgery, University Hospital Hamburg-Eppendorf, Hamburg 20251, Germany

Hong-Jin Kim, Department of Surgery, Yeungnam University Hospital, Daegu 42415, South Korea

Xiao-Ying Wang, Department of Liver Surgery and Transplantation, Liver Cancer Institute, Zhongshan Hospital, Fudan University, Shanghai 200032, China

Gi Hong Choi, Division of Hepato-Biliary-Pancreatic Surgery, Department of Surgery, Severance Hospital, Yonsei University, College of Medicine, Seoul 03722, South Korea

Fabrizio Panaro, Department of Surgery/Division of Robotic and HBP Surgery, Montpellier University Hospital-School of Medicine, Montpellier 34090, France

Jin He, Department of Surgery, Johns Hopkins University School of Medicine, Baltimore, MD 21218, United States

Mikhail Efanov, Department of Hepato-Pancreato-Biliary Surgery, Moscow Clinical Scientific Center, Moscow 111123, Russia

Xiao-Yu Yin, Department of Pancreatobiliary Surgery, The First Affiliated Hospital, Sun Yat-Sen University, Guangzhou 510080, Guangdong Province, China

Roland S Croner, Department of General, Visceral, Vascular and Transplant Surgery, University Hospital Magdeburg, Magdeburg 39120, Germany

Yu-Man Fong, Department of Surgery, City of Hope Medical Center, Duarte, CA 91010, United States

Ji-Ye Zhu, Department of Hepatobiliary Surgery, Peking University People's Hospital, Beijing 100000, China

Zheng Wu, Department of Hepatobiliary Surgery, The First Affiliated Hospital of Xi'an Jiaotong University, Xi'an 710061, Shaanxi Province, China

Chuan-Dong Sun, Department of Hepatobiliary and Pancreatic Surgery, The Affiliated Hospital of Qingdao University, Qingdao 266000, Shandong Province, China

Jae Hoon Lee, Division of Hepatobiliary & Pancreatic surgery, Asan Medical Center, University of Ulsan College of Medicine, Ulsan 682, South Korea

Marco V Marino, General Surgery Department, F. Tappeiner Hospital, Merano 39012, Italy

Iyer Shridhar Ganpati, Hepatobiliary and Pancreatic Surgery, National University Hospital, Singapore 189969, Singapore

Peng Zhu, Xiao-Ping Chen, Hepatic Surgery Center, Tongji Hospital, Tongji Medical College, Huazhong University of Science and Technology, Wuhan 430000, Hubei Province, China

Zi-Zheng Wang, Department of Hepatobiliary Surgery, Senior Department of Hepatology, The Fifth Medical Center of Chinese PLA General Hospital, Beijing 100000, China

Ke-Hu Yang, Evidence-Based Medicine Center, Lanzhou University, Lanzhou 730000, Gansu Province, China

Jia Fan, Zhongshan Hospital, Fudan University, Shanghai 200000, China

Wan Yee Lau, Faculty of Medicine, The Chinese University of Hong Kong, Hong Kong 999077, China

Corresponding author: Rong Liu, MD, PhD, Chief Doctor, Professor, Faculty of Hepato-Pancreato-Biliary Surgery, The First Medical Center of Chinese PLA General Hospital, No. 28 Fuxing Road, Beijing 100000, China. liurong301@126.com

Abstract

The robotic liver resection (RLR) has been increasingly applied in recent years and its benefits shown in some aspects owing to the technical advancement of robotic surgical system, however, controversies still exist. Based on the foundation of the previous consensus statement, this new consensus document aimed to update clinical recommendations and provide guidance to improve the outcomes of RLR clinical practice. The guideline steering group and guideline expert group were formed by 29 international experts of liver surgery and evidence-based medicine (EBM). Relevant literature was reviewed and analyzed by the evidence evaluation group. According to the WHO Handbook for Guideline Development, the Guidance Principles of Development and Amendment of the Guidelines for Clinical Diagnosis and Treatment in China 2022, a total of 14 recommendations were generated. Among them were 8 recommendations formulated by the GRADE method, and the remaining 6 recommendations were formulated based on literature review and experts' opinion due to insufficient EBM results. This international experts consensus guideline offered guidance for the safe and effective clinical practice and the research direction of RLR in future.

Key Words: Robotic liver resection; Laparoscopic liver resection; Guidelines; Expert consensus

©The Author(s) 2023. Published by Baishideng Publishing Group Inc. All rights reserved.

Core Tip: The robotic liver resection (RLR) has been increasingly applied in recent years. Based on the foundation of the previous consensus statement, this new consensus guideline document aimed to update clinical recommendations and provide guidance to improve the outcomes of RLR clinical practice. The guideline steering group and guideline expert group were formed by 29 international experts of liver surgery and evidence-based medicine. Relevant literature was reviewed and analyzed by the evidence evaluation group. According to the WHO Handbook for Guideline Development, the Guidance Principles of Development and Amendment of the Guidelines for Clinical Diagnosis and Treatment in China 2022, a total of 14 recommendations were generated.

Citation: Liu R, Abu Hilal M, Wakabayashi G, Han HS, Palanivelu C, Boggi U, Hackert T, Kim HJ, Wang XY, Hu MG, Choi GH, Panaro F, He J, Efanov M, Yin XY, Croner RS, Fong YM, Zhu JY, Wu Z, Sun CD, Lee JH, Marino MV, Ganpati IS, Zhu P, Wang ZZ, Yang KH, Fan J, Chen XP, Lau WY. International experts consensus guidelines on robotic liver resection in 2023. *World J Gastroenterol* 2023; 29(32): 4815-4830

URL: <https://www.wjgnet.com/1007-9327/full/v29/i32/4815.htm>

DOI: <https://dx.doi.org/10.3748/wjg.v29.i32.4815>

INTRODUCTION

Laparoscopic liver resection (LLR) was first introduced in the 1990s for treatment of benign and malignant tumors[1,2]. Over the past few decades, laparoscopic hepatectomy has developed rapidly and gained widespread acceptance around the world. In 2008, the Louisville Statement indicated the feasibility of laparoscopic hepatectomy[3], and the second international consensus conference in Morioka recommended LLR as a standard practice in specific types of hepatectomy [4]. After that, the Southampton consensus guidelines promoted the safe expansion of LLR and improved patient care after LLR[5]. Since then, laparoscopic techniques have occupied an important place in hepatobiliary surgery. At the same time, with the approval of clinical application and technique developments of robotic surgery systems, robotic hepatectomy has gradually been used in clinical practice. Experience in robotic liver resection (RLR) has been reported in many parts of the world and its feasibility has gradually been identified by clinical studies[6-8]. The robotic system is superior in providing three-dimensional magnified field of vision and robotic arms offer flexibility and tremor filter to surgeons to overcome the shortages of conventional laparoscopic hepatectomy. However, the high cost of the mainstream models and the lack of surgical instruments and experience limit the application of RLR.

With the advent of advanced technique and with experience accumulation, the indications of RLR have been expanded. The robotic system can be used in almost all types of liver resection, including minor hepatectomy, major hepatectomy, donor hepatectomy, and complex liver resections[9-16]. In 2018, an international consensus statement on robotic hepatectomy provided recommendations for RLR based on relevant research and experts' opinions, which contribute to standardization of robotic hepatectomy[17]. However, the recommendation grades were relatively low due to the lack of high-quality evidence. Furthermore, some important issues, like cost-effectiveness of RLR, learning curve of RLR, and outcomes of RLR for difficult liver segments, remain controversial. Available data derive from case series, case-comparative studies, reviews and meta-analyses have been published in recent years, and some new theories also provide new views and perspectives on RLR[18-25].

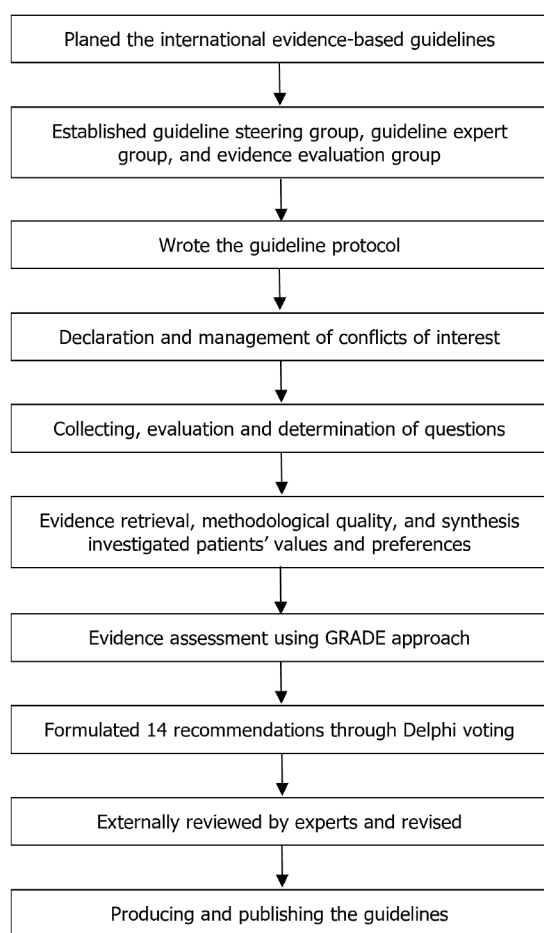
Based on the foundation of the previous statement, the 2023 international consensus statement on RLR aimed to update clinical recommendations and provide guidance to improve the outcomes of RLR clinical practice. We invited a team of robotic surgeon experts to provide their views related to RLR. Based on the related topics, we searched the online databases for RLR studies and the GRADE system was used to grade the evidence. The final consensus was reached by using a combination of clinical evidence and experts' opinions with the aim to improve the clinical outcome of RLR.

METHODS

This international evidence-based guideline is based on the WHO Handbook for Guideline Development and refers to the Guidance Principles of Development and Amendment of the Guidelines for Clinical Diagnosis and Treatment in China 2022. Reporting of the guideline follows the Appraisal of Guidelines, Research, and Evaluation (AGREE II)[26]. A flow chart describes the process and steps of the guideline development (Figure 1).

The guideline development group included the Steering Committee, Consensus Expert Group, and Evidence Evaluation Group. The Steering Committee and Consensus Expert Group consisted of 29 members from different countries or regions. Literature review, questionnaires, and expert discussions were implemented to initially identify clinical questions. All members of the Steering Committee and Consensus Expert Group were encouraged to submit suggestions and add potential questions. Each question was then evaluated and confirmed by the Steering Committee through meetings or emails. The Evidence Evaluation Group performed a literature search, literature screening, method quality evaluation, and data extraction, and thus formed the body of evidence.

PubMed, Cochrane Library, Web of Science, Embase, Scottish Intercollegiate Guidelines Network, WHO, National Guideline Clearing-house, Guidelines International Network, and National Institute for Health and Care Excellence



DOI: 10.3748/wjg.v29.i32.4815 Copyright ©The Author(s) 2023.

Figure 1 The flow chart illustrates the process of guideline development.

databases were systematically searched from inception to September 5, 2022, to retrieval potential eligible studies. There were no regional and language restrictions, but it was limited to human studies. The Evidence Evaluation Group evaluated titles, abstracts, and full texts to identify the eligible publications based on inclusion and exclusion criteria approved by the Steering Committee. The eligible literature included clinical guidelines, systematic reviews and meta-analyses, randomized controlled trials (RCT), non-RCT, cohort studies, case-comparative studies, and case reports or case series that were considered for inclusion when necessary. Information on the included studies was extracted according to a pre-designed extraction form. A Measure Tool to Assess Systematic Reviews (AMSTAR II) was used to evaluate the methodological quality of the included systematic reviews and meta-analyses[27]. The revised Cochrane Risk of Bias Tool and the Newcastle-Ottawa Scale were performed to assess the methodological quality of their corresponding types of clinical studies[28,29]. All the above processes were completed by two independent terms of the Evidence Evaluation Group. If there are differences, they will be resolved by discussing or consulting third parties.

According to the WHO Handbook for Guideline Development, the Evidence Evaluation Group evaluated the need for an update or rapid development of systematic review[30]. The method of GRADE was used to assess the quality of the evidence[31]. Based on the GRADE approach, clinical outcomes, patients' benefit, and economic evaluation, the Steering Committee and Consensus Expert Group used the GRADE decision form and Delphi voting to formulate the strength of recommendations. The consensus was considered to have been reached when 80% of the experts approved a proposal. Before submitting the manuscript for publication, the final draft was reviewed and approved by all members of the guideline development group. This evidence-based guideline is expected to be updated again in 2026.

RESULTS

Question 1: What are the indications of RLR?

In general, the indications of the RLR are similar to those of LLR and open liver resection (OLR). RLR can be applied for treating various liver diseases, including hepatocellular carcinoma (HCC), intrahepatic cholangiocarcinoma (ICC), colorectal liver metastases (CRLM), benign tumors of liver, and living donor hepatectomy. RLR is associated with the following advantages over OLR and LLR in the majority of the currently available studies: less intraoperative blood loss, shorter postoperative hospital stay, less overall complications, and lower pain intensity after surgery[21,22,32-45].

However, in complex hepatectomies such as large tumor size or proximity of tumor to vital vascular structures, RLR should be performed with caution and by highly experienced surgeons (clinical recommendation: Expert agreement 100%).

In a prospective study using propensity score matching, Zhu *et al*[21] compared the short-term perioperative outcomes and long-term survival outcomes of RLR, LLR, and OLR in patients with BCLC stage 0-A hepatocellular carcinoma. The results showed that there were no significant differences among the three interventions except for a shorter hospital stay in the minimally invasive group (RLR and LLR)[21]. Hu *et al*[33] evaluated the clinical efficacy of robotic, laparoscopic, and open liver resection for giant liver haemangiomas (> 10 cm in diameter). They reported robotic hemihepatectomy to be associated with less intraoperative blood loss, better postoperative recovery and lower pain score than OLR. When compared with laparoscopic hemihepatectomy, robotic hemihepatectomy was associated with significantly less intraoperative blood loss and a shorter operative time[33]. Masetti *et al*[46] analyzed the short-term outcomes of patients with CRLM comparing from a multicenter study who underwent RLR *vs* LLR. The results showed RLR and LLR to be comparable in postoperative overall complication rates, intraoperative blood loss, conversion rates, operation time, and hospital stay, but RLR showed a reduced rate of R1 resection margins compared with LLR. Masetti *et al*[46] found the effect size of RLR to be increased for posterosuperior lesions and difficult procedures, which may be due to RLR being able to offer some technical advantages over conventional laparoscopy to improve the short-term outcomes of these patients.

Question 2: Is RLR safe and effective in patients with HCC?

Recommendation: RLR is safe and feasible for HCC, as it is associated with lower overall complication rates than LLR and OLR and a shorter hospital stay than OLR, although it has a longer operative time than LLR and OLR. Other perioperative outcomes are comparable among the three interventions. Regarding oncologic outcomes, limited evidence suggested there is also no significant difference.

Level of evidence: Low level of recommendation: Weak (Grade 2C). Expert agreement: 96.55%.

Two systematic reviews[47,48] and 15 publications[21,35,37,43,49-59] were included to evaluate the perioperative and oncologic outcomes of robotic *vs* laparoscopic or open hepatectomy for treatment of HCC patients, respectively. When compared with LLR for HCC patients, the pooled results indicated that RLR had a lower overall complications rate (RR = 0.72, 95%CI: 0.57 to 0.90; $P = 0.003$), lower minor complication (Clavien-Dindo I-II) rate (RR = 0.72, 95%CI: 0.54 to 0.96; $P = 0.030$), and longer operative time (SMD = 0.66, 95%CI: 0.22 to 1.10; $P = 0.003$)[21,50,52-57]. When compared with OLR for HCC patients, RLR was associated with a shorter hospital stay (SMD = -0.42, 95%CI: -0.57 to -0.28; $P < 0.00001$), lower overall complication rate (RR = 0.61, 95%CI: 0.45 to 0.84; $P = 0.002$), lower minor complication rate (RR = 0.59, 95%CI: 0.42 to 0.84; $P = 0.003$), and longer operative time (SMD = 0.82, 95%CI: 0.18 to 1.46; $P = 0.01$)[21,35,37,43,49,51,58,59]. For other outcomes, RLR showed similar results when compared with LLR or OLR, including estimated blood loss, transfusion rate, severe complication (Clavien-Dindo III-IV), and 90-d mortality. Thus, RLR was comparable to OLR and LLR in feasibility and safety for patients with HCC.

Regarding oncologic outcomes, the three interventions showed comparable R0 resection rates and similar short- and long-term oncological outcomes[21,35,37,43,49,51,53-56,58,59]. Also, a recently published study with a large sample size suggested that robotics may be associated with improved overall survival[54]. The study reported that the RLR group had significantly higher 1-, 3-, and 5-year overall survival rates of 92%, 75%, and 63% compared with the LLR group of 86%, 60%, and 45%, respectively (all $P < 0.01$)[54]. Based on the currently available studies, the implementation of RLR is feasible and safe and is associated with similar oncologic outcomes. Prospective studies are recommended to further evaluate whether the safety and efficacy of RLR can be affected by tumor size, resection complexity, and the quality of the underlying liver parenchyma.

Question 3: Is RLR safe and effective in patients with ICC?

Recommendation: Currently, there is insufficient evidence to compare the safety and feasibility between RLR and LLR for treatment of ICC. Limited evidence suggests that RLR has less intraoperative blood loss, shorter hospital stay, and better overall survival than OLR.

Level of evidence: Very low. Level of recommendation: Weak (Grade 2D). Expert agreement: 86.21%.

Two comparative studies were reported to evaluate the safety and feasibility of robotic *vs* open hepatectomy for ICC [36,60]. The pooled results suggested that RLR had less intraoperative blood loss (SMD = -0.75, 95%CI: -1.46 to -0.05; $P = 0.04$) and shorter hospital stay (SMD = -0.31, 95%CI: -0.54 to -0.09; $P = 0.006$) than OLR[36,60]. There were no significant differences in other perioperative outcomes between the two groups. Limited evidence suggests RLR may improve the outcomes of ICC when compared to OLR, but we need to carefully interpret these findings. Shapera *et al*[60] suggested that patients after RLR or OLR had similar resection margins, and median overall survival was similar in patients with any resection margin distance. Hamad *et al*[36] compared short- and long-term outcomes between RLR and OLR for patients with ICC, and they reported that patients who underwent RLR had shorter hospital stays and similar long-term risk of death between the two groups. These results suggested RLR for ICC could shorten hospital stay without compromising oncological outcomes such as negative margins, postoperative mortality, and long-term survival[36]. As there have been few comparative studies focusing on ICC and there is no meta-analysis on the short- and long-term clinical outcomes of RLR *vs* LLR or OLR for ICC, higher levels of evidence are urgently needed to answer this question.

Question 4: Is RLR safe and effective in patients with CRLM?

Recommendation: RLR is safe and feasible for patients with CRLM, since it is associated with a lower conversion rate but

longer hospital stay than that of LLR. Limited evidence suggests no significant difference in all the perioperative outcomes between RLR and OLR in patients with CRLM. Oncologic outcomes with limited evidence suggested there was also no significant difference between RLR *vs* LLR and RLR *vs* OLR.

Level of evidence: Very low. Level of recommendation: Weak (Grade 2D). Expert agreement: 89.66%.

Studies on RLR *vs* LLR or OLR for CRLM have been extensively published in the past three years[45,46,61-63]. The evidence suggested RLR to have a lower conversion rate (RR = 0.42, 95%CI: 0.23 to 0.77; $P = 0.005$) and longer hospital stays (SMD = 0.19, 95%CI: 0.03 to 0.35; $P = 0.020$) than LLR for patients with CRLM, and there were no significant difference in operation time, estimated blood loss, intraoperative blood transfusion rates, R0 resection, postoperative morbidity, and overall survival[45,46,61,62]. In addition, limited evidence showed there were no significant differences in operation time, estimated blood loss, R0 resection, hospital stays, overall complications, minor and major complications, postoperative 30-d mortality, and survival outcomes between RLR and OLR for patients with CRLM[61,63]. With appropriate expertise and experience, robotic-assisted surgery can be considered to be an alternative minimally invasive approach to CRLM resections[64,65].

Currently, there is insufficient evidence on patients who underwent simultaneous robotic-assisted resections of CRLM and the primary tumor. A conference abstract on one RCT in comparing RLR and OLR for simultaneous resections suggested a longer operating time in the robotic arm, and patients who underwent RLR had less blood loss, less Clavien-Dindo III-IV complications, a shorter time to pass first flatus, and a shorter hospital stay when compared to open surgery [40]. A recent systematic review reported that all patients who underwent robot-assisted R0 resection had no perioperative deaths[65]. However, when patients who underwent simultaneous major hepatectomy combined with complex colorectal surgery, the operative risks were increased, leading to poorer perioperative outcomes with increased length of stay, morbidity, and mortality, and unfavorable patient recovery due to delay in the initiation of subsequent adjuvant therapy[5,65].

Question 5: Is robot approach safe and feasible for living donor hepatectomy?

Recommendation: Robotic living donor hepatectomy can be a safe and feasible alternative to open and laparoscopic approach. Robotic living donor hepatectomy has a longer operative time than that of OLR and LLR, but a shorter hospital stay compared with OLR. The other donor and recipient outcomes were reported to be comparable among the three interventions.

Level of evidence: Very low. Level of recommendation: Weak (Grade 2D). Expert agreement: 96.55%.

We systematically reviewed 4 studies that investigated the safety and feasibility of robotic and open living donor hepatectomy, with a total of 972 patients being included in the meta-analysis[41,66-68]. The pooled results suggested that RLR had lower postoperative peak serum bilirubin (SMD = -0.59, 95%CI: -0.81 to -0.37; $P < 0.0001$), shorter postoperative hospital stays (SMD = -0.53, 95%CI: -0.90 to -0.17; $P = 0.004$) and a longer operative time (SMD = 1.45, 95%CI: 0.66 to 2.25; $P = 0.003$) compared to the open group[41,66-68]. There were no significant differences in terms of other donor and recipient outcomes. Rho *et al*[41] evaluated the clinical and perioperative outcomes of robotic living donor right hepatectomy from carried out on 52 consecutive cases patients and compared with patients who underwent comparison with open ($n = 62$) and laparoscopic ($n = 118$) donor hepatectomy. They reported that although RLR was associated with a longer operation time, the mean estimated blood loss was significantly lower compared with LLR and OLR, and donor satisfaction (body image and cosmetic appearance scores) was higher in RLR than that of LLR[41].

Large incisions resulting in large scars are an ongoing concern for surgeons performing open living donor hepatectomy. For robotic living donor hepatectomy, there is a better body image, improved cosmetic appearance, and fewer wound-related complications[41]. Living donor hepatectomy is considered to be the pinnacle of hepatobiliary surgery, which requires assurance of donor survival, good graft status and minimization of associated complications[66]. Based on the currently available studies, RLR reduced postoperative pain, resulted in rapid donor recovery and with similar postoperative complications[41,66-68]. However, studies comparing RLR with LLR are insufficient[41]. In summary, RLR for living donor hepatectomy is feasible and safe when performed by surgeons with both excellent knowledge of liver anatomy and long experience of open living donor hepatectomy[41,66]. However, biliary complications are a problem that should never be ignored. The combination of robotic-assisted procedures and indocyanine green (ICG) fluoroscopy is recommended for precise division and fine suturing of the divided bile ducts[41,66].

Question 6: Is robotic approach safe and feasible for minor hepatectomy?

Recommendation: For minor hepatectomy, the safety and feasibility of RLR are comparable to that of LLR and OLR. Robotic minor hepatectomy was reported to have a longer operative time than LLR, but there was less overall complication. RLR resulted in a shorten hospital stay and decreased overall morbidity compared to the open approach. The other perioperative outcomes were comparable among the three interventions.

Level of evidence: Low. Level of recommendation: Weak (Grade 2C). Expert agreement: 96.55%.

Minor hepatectomy with fewer than 3 adjacent hepatic segmental resections is the most commonly carried out procedure in RLR. As a minimally invasive surgery, the benefits of the robotic approach for minor hepatectomy have been controversial[36,37,49,51,69-72]. An updated meta-analysis based on new evidence was conducted by the Evidence Evaluation Group on 13 retrospective cohort studies with 735 robotic and 1362 laparoscopic minor hepatectomies[12,22,34,53,73-81]. The results showed that the operative time was significantly longer (SMD = 0.44, 95%CI: 0.19 to 0.69; $P = 0.0006$) with the robotic approach, but it had less overall complication (RR = 0.76, 95%CI: 0.61 to 0.95; $P = 0.01$) than LLR. No statistically significant differences were observed in estimated blood loss, conversion rate, blood transfusion rate,

postoperative hospital stays, 90-d mortality, and R0 resection. Based on the currently available studies and expert opinions, RLH was associated with a longer operation time when compared with LLH because of the additional time required to dock and undock the robot, and the large extent to exchange instruments required by the robot-assisted procedures[34,69,70].

We also systematically reviewed 6 studies to investigate the safety and feasibility between RLR and OLR[9,38,71,73,82,83]. The results showed that robotic minor hepatectomy had a shorter postoperative hospital stay (SMD = -0.91, 95%CI: -1.27 to -0.55; $P < 0.00001$), less overall complications (RR = 0.39, 95%CI: 0.23 to 0.64; $P = 0.0002$), and less severe complications (RR = 0.28, 95%CI: 0.08 to 0.97; $P = 0.04$) when compared to open surgery. There were no significant differences in terms of operation time, estimated blood loss, intra-operative blood transfusion rate, and readmission rate, and R0 resection for malignancy between robotic and open minor hepatectomies. Liver resections for difficult-located segments (1, 4a, 7, and 8) are recommended to be defined as technical major hepatectomy.

Question 7: Is robotic approach safe and feasible for major hepatectomy?

Recommendation: For major hepatectomy, robotic hepatectomy is as safe and feasible as laparoscopic and open hepatectomy. Compared with LLR, RLR was significantly better in estimated blood loss and conversion rate. In comparison with OLR, the estimated blood loss and hospital stay of RLR are significantly better than those of OLR, but there is a longer operation time in the RLR group.

Level of evidence: Low. Level of recommendation: Weak (Grade 2C). Expert agreement: 93.10%.

Chong *et al*[32] compared the efficacy and safety of 989 individuals, including 220 who underwent robotic and 769 who underwent laparoscopic right and extended right hepatectomy (RH/ERH). They reported a lower open conversion rate and a shorter postoperative hospital stay for robotic RH/ERH. We systematically reviewed 10 studies that investigated the safety and feasibility of robotic and laparoscopic major hepatectomy[22,32,33,39,84-89]. The results showed that robotic major hepatectomy resulted in less estimated blood loss (SMD = -0.52, 95%CI: -0.88 to -0.16; $P = 0.005$) and a lower conversion rate (RR = 0.44, 95%CI: 0.29 to 0.67; $P = 0.0001$) compared to laparoscopic surgery. There were no significant differences between robotic and laparoscopic major hepatectomies in transfusion rate, R0 resection, readmission, mortality within 90 d, overall complications, mild/severe complication, bile leakage and liver failure rates.

Hamad *et al*[36] investigated 1876 patients who underwent open ($n = 1804$) and robotic assisted ($n = 72$) resection between 2004 and 2017. The results showed that the patients who underwent RLR had a shorter length of hospital stays yet there was no difference in 30-d readmission or 90-d mortality[36]. Lee *et al*[43] matched 36 patients each in the robotic and open group. They found that operative time was significantly longer but the postoperative hospital stays was significantly shorter in the robotic group[43]. An updated meta-analysis based on the latest evidence was conducted by the Evidence Evaluation Group on 8 retrospective cohort studies. The pooled results suggested the estimated blood loss and hospital stay of the robotic group to be significantly shorter than the open group, but there was a longer operation time in the robotic group[22,33,37,43,49,51,71,72].

We also focused on the safety and feasibility of RLR in technically “major” resections (segment 1, 4a, 7, and 8). Liver resection on segments 1, 4a, 7, and 8 is relatively more technically difficult owing to a large parenchymal transection plane with proximity to critical structures and major vessels[90-92]. RLR on difficult liver segments has been reported to be a safe and feasible procedure, and many experienced surgeons tend to perform robotic resections on these selected patients. In a recent international multicenter retrospective study comparing robotic *vs* laparoscopic right posterior sectionectomy, the author reported RLR to be associated with reduced blood loss and lower open conversion rates than LLR, and suggested that RLR and LLR could be performed in expert centers with good outcomes in well selected patients[93]. A study reported a patient with hepatocellular carcinoma which involved segments 4 and 8 to undergo robotic central bisectionectomy. The outcomes indicated that robotic central bisectionectomy could be performed safely using proper exposure techniques and an appropriate combination of several useful technical tips[16]. A multicenter study reported that robotic right posterior sectionectomy could be performed in expert centers with less blood loss and lower conversion rates in well-selected patients[93,94]. Another study indicated that RLR on segments 1, 4a, 7, and 8 showed similar surgical outcomes, including blood loss, hospital stay, R0 negative margin rate, and morbidity, when compared with laparoscopic liver resection[95]. The application of robotic approach has also been reported for caudate lobectomy, including Spiegelian lobectomy, isolated partial and complete caudate lobectomy[96,97]. However, most studies reported only a few cases with the potential of selection bias, thus limiting the application of the results. It is necessary to conduct high-quality clinical studies in the future to further clarify the impact of robotic hepatectomy on difficult liver segments.

Question 8: Is RLR more cost-effective than LLR and OLR?

Recommendation: As the policy on medical expense and definition of cost are different in the literature, the real cost of three interventions should be calculated and compared based on a standard method in the future. Limited evidence suggests the total cost of RLR to be higher than LLR, but there were no significant differences between RLR and OLR. The cost-effectiveness of the three interventions should be synthetically evaluated based on many factors, including direct and indirect costs, hidden benefits from favorable clinical outcomes and local social and economic situations.

Level of evidence: Very low. Level of recommendation: Weak (Grade 2D). Expert agreement: 89.66%.

The most common concern about cost-effectiveness analysis of RLR is simply on the total cost, hospitalization costs, and readmission costs. One systematic review and meta-analysis and nine additional updated original studies were included to answer this question[9,34,42,84,98-103]. The resynthesized evidence suggests that the total costs (SMD = 1.15, 95%CI: 0.24 to 2.07; $P = 0.01$) and hospitalization costs (SMD = 0.96, 95%CI: 0.50 to 1.41; $P < 0.0001$) of RLR is higher compared to LLR[34,42,75,78,104]. However, no statistically significant differences were observed regarding total costs,

hospitalization costs, and readmission costs between RLR and OLR[9,42,44,68,101]. In addition, total costs were assessed for different type of liver resection. For the included studies which investigated RLR *vs* LLR, these studies were more focused on the cost-effectiveness in minor liver resections, and the results showed that RLR had higher total costs than LLR (SMD = 1.22, 95%CI: 0.60 to 1.83; $P < 0.0001$)[34,75,78]. When various types of pathologies in patients were included in the comparison between RLR and OLR, including complex hepatolithiasis, donor right hepatectomy, minor and major resections, these confounders were introduced to become an important reason to decrease the level of evidence[9,44,68,103]. According to the currently available studies, even though the higher total costs of RLR were closely associated with more operating room supplies[34,68,73,79,80,84], the higher total costs were mainly due to longer hospital stays and more treatment of complications in the laparoscopic and open group than the robotic group[9,71,100,105,106]. The favorable perioperative outcomes in RLR should be weighed against the higher operative costs when compared with laparoscopic or open approaches[98].

Robotic surgical systems have evolved rapidly in recent years, and the trends in the total cost and operative cost are worth future investigating. Although the costs of RLR may differ among countries or regions due to differences in medical policy or insurance premium, a serious obstacle to the widespread use of robotic surgical system is the large indirect cost[34,78-80]. Furthermore, a comprehensive evaluation of the cost-effectiveness should also consider the hidden benefits from favorable clinical outcomes associated with robotic hepatectomy to include patient's psychological benefits and social benefits.

Question 9: What is the role of RLR for cirrhotic patients?

In the setting of cirrhotic patients, similar to LLR, RLR could also be performed in to selected patients. Currently, there are insufficient studies focusing on the application of RLR on cirrhotic patients (clinical recommendation: Expert agreement 100%).

The improvement of surgical techniques, perioperative management, and patient selection improved the surgical outcome of patients with cirrhosis, and the overall improvement of surgical techniques as represented by the minimally invasive approach improved the outcomes of perioperative management in patients with cirrhosis[107-109]. Minimally invasive hepatectomy for cirrhotic patients has been reported to be associated with less complications, shorter postoperative hospital stay, and similar outcomes in operative time, estimated blood loss and postoperative complications when compared with non-cirrhotic patients, and laparoscopic surgery may provide potential benefits in reducing the incidence of postoperative ascites and liver failure[5,110]. Only a few patients were included in these studies and the outcome of robotic hepatectomy in patients with cirrhosis were not evaluated separately[47]. It is necessary to conduct more research on RLR for liver cancer patients with cirrhosis to further evaluate the safety and efficacy of the robotic approach.

Question 10: What is the role of RLR for lesions located close to major vascular and biliary structures?

For lesions located close to major vascular and biliary structures, especially for deeply located lesions, parenchyma-sparing liver resection should be performed by using the robotic approach to rely on the delicate dissection offered by the stable and flexible movements of the robotic arms, as an alternative approach to major liver resection. Compared to robotic major liver resection, robotic parenchyma-sparing liver resection could potentially increase resectability of these lesions. However, as this is a technically demanding procedure, it should be performed by experienced surgeons on well-selected patients (clinical recommendation: Expert agreement 100%).

For malignant liver lesion with a small tumor size but in close proximity to important vessels such as the hepatocaval confluence, or the bifurcation of the primary or secondary Glissonean pedicles, the conventional approach is to use major resection to remove the vessel in its entirety along with the liver tissues it supplies or drains. However, in patients with a poor liver function and insufficient liver remnant volume, the safety of major resection is difficult to ensure, resulting in a reduced operative resection rate. Parenchyma-sparing liver resection addresses this dilemma to some extent. Removal of the tumor off the adjacent vascular structures or combined vascular resection and reconstruction could increase the resection rate of the tumor. In contrast to the laparoscopic approach with its intrinsic drawbacks including the fulcrum effect and rigid instruments, the robotic system could offer stable and flexible movements of the instruments, which facilitate the operative procedures to achieve a higher level of difficulty. RLR for treatment of centrally located lesions has been reported and shown to be safe and feasible in small case series[111,112]. In addition, with the help of intraoperative ultrasound, it has been shown that the robotic approach allowed optimal access to all liver segments and facilitated parenchymal-sparing surgery for lesions located in the posterosuperior segments or in contact with main liver vessels, not only for colorectal liver metastasis but also for HCC[113]. Robotic parenchyma-sparing liver resection for lesions located close to major vascular and biliary structures allows for sufficient liver remnant to be retained, thus allowing patients to start their postoperative adjuvant therapy early, which is important in improving patients' survival in today's rapidly evolving of comprehensive treatment.

Question 11: What is the role of robotic approach for associating liver partition and portal vein ligation for staged hepatectomy?

Robotic first- or second-stage associating liver partition and portal vein ligation for staged hepatectomy (ALPPS) is an optional strategy for treatment of primary and metastatic liver cancer in patients with insufficient residual liver volume. Due to the complexity of ALPPS surgery and the high morbidity rate, the benefit of robotic ALPPS is unclear on the curative effect of the initially unresectable liver cancer, as there have been rapidly evolving developments in locoregional and systemic therapies. Robotic ALPPS must be evaluated with caution before operation and should only be performed in highly selected patients (clinical recommendation: Expert agreement 100%).

ALPPS has been introduced to treat patients with advanced liver tumors and insufficient residual liver volumes for more than 10 years. However, there is still a lot of controversies on the value of this approach due to its high mortality rate[114,115]. Minimally invasive approach for ALPPS has been applied for the purpose of reducing mortality and improving recovery of patients. Most of the ALPPS procedures were used for the first-stage[116]. A systematic review of 27 patients who underwent ALPPS reported the potential benefit of using the minimally invasive ALPPS in reducing morbidity and mortality[117]. However, there was selective bias in this study and the sample size was small, which compromised the robustness of the conclusions. Previous studies with small case numbers showed that the robotic approach could be used for the first-stage ALPPS for HCC, CRLM and ICC[118-120]. Complex robotic ALPPS procedures (*e.g.*, robotic ALPPS for patients with portal vein thrombosis, robotic ALPPS with simultaneous left colectomy) have also been reported to be safe and feasible carried out by experienced surgeons[121-124]. After the long period of development of ALPPS and its modified approaches, the role of ALPPS should be revisited due to its complexity in treating patients with advanced stage of malignancy and the high morbidity rate, especially when facing the major developments in locoregional and systemic therapies[125-128]. Although the robotic ALPPS is technically feasible, the oncological and health economic benefits are still unclear. The efficacy of robotic ALPPS still needs to be evaluated through high-quality clinical researches.

Question 12: Could the robotic approach shorten the learning curve of liver resection?

The case number required to surmount the learning curve for RLR has been reported to be lower than that for LLR. The case number required to surmount the learning curve of RLR varied among different studies[12,32,129-134]. The surgeons' experience in LLR could have a significant influence on the learning curve of RLR. About 25 consecutive cases are needed for an experienced surgeon to surmount the learning curve of major RLR and 15 cases for minor RLR (clinical recommendation: Expert agreement 100%).

Because of the enhanced surgical dexterity offered by the robotic system, robotic hepatectomy may have a shorter learning curve compared to laparoscopic hepatectomy. However, the large experience in LLR surgeons had before embarking on robotic liver surgery could have an impact on the learning curve[100,135]. Chua *et al*[136] reviewed the literature reported up to July 2019 pertaining to the learning curves in minimally invasive hepatectomy (MIH) by searching PubMed and Scopus databases. Forty studies were included to explore quantitatively the learning curve for MIH. They reported the case number required to surmount the learning curve for RLR was 25 consecutive cases (range: 16-50)[136].

Liu *et al*[131], by analyzing the learning curve of 100 robotic left and right hemihepatectomy (RLH/RRH) in terms of operative time, reported that the learning process was completed in the RLH group after an initial phase of 35 cases, which was shorter than the RRH group ($n = 45$). Given that, mobilization and resection of the left liver are easier to perform than the right liver, RLH might be the first choice for beginners.

Question 13: Which difficulty scoring systems should be used for RLR?

Ban and Iwate reported on the difficulty scoring system for LLR which was externally validated for RLR. The two difficulty scoring systems are currently recommended. A difficulty scoring system exclusively for RLR should be established by further studies (clinical recommendation: Expert agreement 100%).

By predicting the complexity of different surgeries, the difficulty scoring system (DSS) can recommend suitable patients to surgeons at their corresponding learning stages. Current DSS scores on the basis of the weighted combination of predicted factors that affect the surgeries' complexity include tumor size, position, number of the tumor, extent of liver resection and liver function[137,138].

However, the scoring system for RLR remains to be designed. Linn *et al*[137] summarized 11 types of DSS for LLR based on previously reported studies and conducted a meta-analysis. The results showed that 5 DSS (including Ban DSS, Iwate DSS, Hasegawa DSS, IMM DSS, and Southampton DSS) could be used for predicting the difficulty of LLR surgeries [138-141]. Though no DSS has significant advantages, Ban and Iwate DSS were externally validated for RLR[137,138].

Question 14: What is the role of intraoperative navigation techniques in RLR?

Intraoperative ultrasonography (IOUS) and indocyanine green (ICG) imaging has been used for tumor locating and surgical margin delineation in RLR. Surgeons are supposed to master these techniques and choose the suitable navigation tools to increase the safety of RLR (clinical recommendation: Expert agreement 100%).

Studies have supported the importance of IOUS in liver operations[142,143]. Based on the experience of IOUS in 110 consecutive patients, Zhu *et al*[144] put forward a standardized 4-step IOUS agreement to ensure the safety of RLR operation. Moreover, when using IOUS to examine all the patients, they found 11 patients (10%) had extra lesions, and 7 of these patients (63.64%) underwent improved surgical strategies[144]. However, IOUS has the limitations to accurately show irregular hepatic segmental demarcation and anatomical structure, while ICG imaging has become a supplementary tool for IOUS due to its ability on real-time 3D recognition of tumor margins and to guide liver transection plane. Wakabayashi *et al*[145] reviewed articles related to ICG imaging in liver resection and showed that the combination of IOUS and ICG imaging can increase the safety of liver resection, but the timing and dose administration of ICG remain uncertain. Furthermore, Liu and his team reported the application of ICG using "four-zone three-phase" fluorescence imaging in robot-assisted anatomical hepatectomy in which the liver was divided into 4 anatomical zones include the "tumor zone", "peritumor zone", "ischemia zone", and "reserved liver zone"[146]. The ICG "four-zone three-phase" fluorescence imaging could accurately locate most tumors, clearly display the liver resection plane in a real-time manner and achieved the precision and standardization of anatomical hepatectomy.

The application of augmented reality (AR) technology can increase the accuracy of tumor positioning and surgical margin delineation. At present, only a few cases have been reported on the application of AR technology in RLR. Further technological advance and studies on evaluation of AR technology in clinical applications remain to be done.

CONCLUSION

This international experts consensus guideline offered guidance for the safe and effective clinical practice and the research direction of RLR in future. This evidence-based guideline is expected to be updated again in 2026 and further randomized controlled trials are needed to validate these recommendations.

ACKNOWLEDGEMENTS

We thank all the external reviewers for giving responses to the consensus; and all Members of the Evidence Evaluation Group: Shao-Ming Song and Lin Zhu (The First School of Clinical Medicine, Lanzhou University, Lanzhou 730000, China), Gui-Neng Zeng and Yue Li (School of Medicine, Nankai University, Tianjin 300300, China), Zhao-Da Deng and Zhi-Yuan Yao (Medical School of Chinese PLA, Beijing 100000, China).

FOOTNOTES

Author contributions: Members of the guideline steering group: Liu R, Abu Hilal M, Wakabayashi G, Fan J, Chen XP, and Lau WY contributed to designing guidelines, identifying problems, and providing comments; Members of the guideline expert group: Han HS, Palanivelu C, Boggi U, Hackert T, Kim HJ, Wang XY, Hu MG, Choi GH, Panaro F, He J, Efanov M, Yin XY, Croner RS, Fong YM, Zhu JY, Wu Z, Sun CD, Lee JH, Marino MV, Ganpati IS, Zhu P, Wang ZZ, and Yang KH provided expert's opinion; and all authors approved the final version of the manuscript.

Conflict-of-interest statement: The authors declare no conflict of interest in the development of consensus guidelines.

Open-Access: This article is an open-access article that was selected by an in-house editor and fully peer-reviewed by external reviewers. It is distributed in accordance with the Creative Commons Attribution NonCommercial (CC BY-NC 4.0) license, which permits others to distribute, remix, adapt, build upon this work non-commercially, and license their derivative works on different terms, provided the original work is properly cited and the use is non-commercial. See: <https://creativecommons.org/licenses/by-nc/4.0/>

Country/Territory of origin: China

ORCID number: Rong Liu 0000-0001-5170-6474; Mohammed Abu Hilal 0000-0002-3162-4639; Go Wakabayashi 0000-0002-8383-9666; Ho-Seong Han 0000-0001-9659-1260; Ugo Boggi 0000-0002-7505-5896; Hong-Jin Kim 0000-0002-5965-8339; Ming-Gen Hu 0000-0003-3612-2870; Gi Hong Choi 0000-0001-7511-9581; Fabrizio Panaro 0000-0001-8200-4969; Jin He 0000-0001-9149-2247; Mikhail Efanov 0000-0003-0738-7642; Xiao-Yu Yin 0000-0002-5518-5984; Yu-Man Fong 0000-0002-8934-9959; Ji-Ye Zhu 0000-0003-0456-7584; Zheng Wu 0000-0002-7102-9543; Chuan-Dong Sun 0000-0002-6724-2747; Jae Hoon Lee 0000-0002-6170-8729; Iyer Shridhar Ganpati 0000-0002-4630-9842; Peng Zhu 0000-0001-8088-0615; Zi-Zheng Wang 0009-0000-5963-7493; Jia Fan 0000-0002-2127-4102; Xiao-Ping Chen 0000-0001-8636-0493.

S-Editor: Chen YL

L-Editor: A

P-Editor: Chen YL

REFERENCES

- 1 Reich H, McGlynn F, DeCaprio J, Budin R. Laparoscopic excision of benign liver lesions. *Obstet Gynecol* 1991; **78**: 956-958 [PMID: 1833688]
- 2 Katkhouda N, Fabiani P, Benizri E, Mouiel J. Laser resection of a liver hydatid cyst under videolaparoscopy. *Br J Surg* 1992; **79**: 560-561 [PMID: 1535261 DOI: 10.1002/bjs.1800790628]
- 3 Buell JF, Cherqui D, Geller DA, O'Rourke N, Iannitti D, Dagher I, Koffron AJ, Thomas M, Gayet B, Han HS, Wakabayashi G, Belli G, Kaneko H, Ker CG, Scatton O, Laurent A, Abdalla EK, Chaudhury P, Dutson E, Gamblin C, D'Angelica M, Nagorney D, Testa G, Labow D, Manas D, Poon RT, Nelson H, Martin R, Clary B, Pinson WC, Martinie J, Vauthey JN, Goldstein R, Roayaie S, Barlet D, Espat J, Abecassis M, Rees M, Fong Y, McMasters KM, Broelsch C, Busuttill R, Belghiti J, Strasberg S, Chari RS; World Consensus Conference on Laparoscopic Surgery. The international position on laparoscopic liver surgery: The Louisville Statement, 2008. *Ann Surg* 2009; **250**: 825-830 [PMID: 19916210 DOI: 10.1097/sla.0b013e3181b3b2d8]
- 4 Wakabayashi G, Cherqui D, Geller DA, Buell JF, Kaneko H, Han HS, Asbun H, O'Rourke N, Tanabe M, Koffron AJ, Tsung A, Soubrane O, Machado MA, Gayet B, Troisi RI, Pessaux P, Van Dam RM, Scatton O, Abu Hilal M, Belli G, Kwon CH, Edwin B, Choi GH, Aldrighetti LA, Cai X, Cleary S, Chen KH, Schön MR, Sugioka A, Tang CN, Herman P, Pekolj J, Chen XP, Dagher I, Jarnagin W, Yamamoto M, Strong R, Jagannath P, Lo CM, Clavien PA, Kokudo N, Barkun J, Strasberg SM. Recommendations for laparoscopic liver resection: a report from the

second international consensus conference held in Morioka. *Ann Surg* 2015; **261**: 619-629 [PMID: [25742461](#) DOI: [10.1097/SLA.0000000000001184](#)]

- 5 **Abu Hilal M**, Aldrighetti L, Dagher I, Edwin B, Troisi RI, Alikhanov R, Aroori S, Belli G, Besselink M, Briceno J, Gayet B, D'Hondt M, Lesurtel M, Menon K, Lodge P, Rotellar F, Santoyo J, Scatton O, Soubrane O, Sutcliffe R, Van Dam R, White S, Halls MC, Cipriani F, Van der Poel M, Ciria R, Barkhatov L, Gomez-Luque Y, Ocana-Garcia S, Cook A, Buell J, Clavien PA, Derveniz C, Fusai G, Geller D, Lang H, Primrose J, Taylor M, Van Gulik T, Wakabayashi G, Asbun H, Cherqui D. The Southampton Consensus Guidelines for Laparoscopic Liver Surgery: From Indication to Implementation. *Ann Surg* 2018; **268**: 11-18 [PMID: [29064908](#) DOI: [10.1097/SLA.0000000000002524](#)]
- 6 **Choi GH**, Chong JU, Han DH, Choi JS, Lee WJ. Robotic hepatectomy: the Korean experience and perspective. *Hepatobiliary Surg Nutr* 2017; **6**: 230-238 [PMID: [28848745](#) DOI: [10.21037/hbsn.2017.01.14](#)]
- 7 **Goja S**, Singh MK, Vohra V, Soin AS. Robotic Left Hepatectomy: a Case Report (First Reported Case of Robotic Hepatectomy in India). *Indian J Surg* 2015; **77**: 338-340 [PMID: [26702246](#) DOI: [10.1007/s12262-015-1307-7](#)]
- 8 **Kam JH**, Goh BK, Chan CY, Wong JS, Lee SY, Cheow PC, Chung AY, Ooi LL. Robotic hepatectomy: initial experience of a single institution in Singapore. *Singapore Med J* 2016; **57**: 209-214 [PMID: [26843059](#) DOI: [10.11622/smedj.2016024](#)]
- 9 **Stewart C**, Wong P, Warner S, Raoof M, Singh G, Fong Y, Melstrom L. Robotic minor hepatectomy: optimizing outcomes and cost of care. *HPB (Oxford)* 2021; **23**: 700-706 [PMID: [32988754](#) DOI: [10.1016/j.hpb.2020.09.005](#)]
- 10 **Sucandy I**, Jacoby H, Crespo K, Syblis C, App S, Ignatius J, Ross S, Rosemurgy A. A Single Institution's Experience With Robotic Minor and Major Hepatectomy. *Am Surg* 2023; **89**: 1387-1391 [PMID: [34798777](#) DOI: [10.1177/00031348211047500](#)]
- 11 **Sucandy I**, Luberic K, Lippert T, Castro M, Krill E, Ross S, Rosemurgy A. Robotic Major Hepatectomy: An Institutional Experience and Clinical Outcomes. *Ann Surg Oncol* 2020; **27**: 4970-4979 [PMID: [32661848](#) DOI: [10.1245/s10434-020-08845-4](#)]
- 12 **O'Connor VV**, Vuong B, Yang ST, DiFronzo A. Robotic Minor Hepatectomy Offers a Favorable Learning Curve and May Result in Superior Perioperative Outcomes Compared with Laparoscopic Approach. *Am Surg* 2017; **83**: 1085-1088 [PMID: [29391100](#) DOI: [10.1177/000313481708301014](#)]
- 13 **Chen PD**, Wu CY, Hu RH, Ho CM, Lee PH, Lai HS, Lin MT, Wu YM. Robotic liver donor right hepatectomy: A pure, minimally invasive approach. *Liver Transpl* 2016; **22**: 1509-1518 [PMID: [27509325](#) DOI: [10.1002/lt.24522](#)]
- 14 **Broering DC**, Elsheikh Y, Alnema Y, Zidan A, Elsarawy A, Saleh Y, Alabbad S, Sturdevant M, Wu YM, Troisi RI. Robotic Versus Open Right Lobe Donor Hepatectomy for Adult Living Donor Liver Transplantation: A Propensity Score-Matched Analysis. *Liver Transpl* 2020; **26**: 1455-1464 [PMID: [32542956](#) DOI: [10.1002/lt.25820](#)]
- 15 **Camerlo A**, Delayre T, Fara R. Robotic central hepatectomy for hepatocarcinoma by glissonean approach (with video). *Surg Oncol* 2021; **36**: 82-83 [PMID: [33316683](#) DOI: [10.1016/j.suronc.2020.11.011](#)]
- 16 **Rojas AE**, Paterakos P, Choi SH. Robotic Central Bisectionectomy for Centrally Located Hepatic Malignant Tumor. *Ann Surg Oncol* 2022 [PMID: [35357613](#) DOI: [10.1245/s10434-022-11646-6](#)]
- 17 **Liu R**, Wakabayashi G, Kim HJ, Choi GH, Yiengpruksawan A, Fong Y, He J, Boggi U, Troisi RI, Efanov M, Azoulay D, Panaro F, Pessaux P, Wang XY, Zhu JY, Zhang SG, Sun CD, Wu Z, Tao KS, Yang KH, Fan J, Chen XP. International consensus statement on robotic hepatectomy surgery in 2018. *World J Gastroenterol* 2019; **25**: 1432-1444 [PMID: [30948907](#) DOI: [10.3748/wjg.v25.i12.1432](#)]
- 18 **Chong CC**, Fuks D, Lee KF, Zhao JJ, Choi GH, Sucandy I, Chiow AKH, Marino MV, Gastaca M, Wang X, Lee JH, Efanov M, Kingham TP, D'Hondt M, Troisi RI, Choi SH, Sutcliffe RP, Chan CY, Lai ECH, Park JO, Di Benedetto F, Rotellar F, Sugioka A, Coelho FF, Ferrero A, Long TCD, Lim C, Scatton O, Liu Q, Schmelzle M, Pratschke J, Cheung TT, Liu R, Han HS, Tang CN, Goh BKP; International Robotic and Laparoscopic Liver Resection study group investigators. Propensity Score-Matched Analysis Comparing Robotic and Laparoscopic Right and Extended Right Hepatectomy. *JAMA Surg* 2022; **157**: 436-444 [PMID: [35262660](#) DOI: [10.1001/jamasurg.2022.0161](#)]
- 19 **Varghese CT**, Chandran B, Sudhindran S. Robotic Donor Hepatectomy-Safety in Novelty Is the Essence. *JAMA Surg* 2021; **156**: 1171-1172 [PMID: [34668937](#) DOI: [10.1001/jamasurg.2021.4428](#)]
- 20 **Muaddi H**, Hafid ME, Choi WJ, Lillie E, de Mestral C, Nathens A, Stukel TA, Karanicolas PJ. Clinical Outcomes of Robotic Surgery Compared to Conventional Surgical Approaches (Laparoscopic or Open): A Systematic Overview of Reviews. *Ann Surg* 2021; **273**: 467-473 [PMID: [32398482](#) DOI: [10.1097/SLA.0000000000003915](#)]
- 21 **Zhu P**, Liao W, Zhang WG, Chen L, Shu C, Zhang ZW, Huang ZY, Chen YF, Lau WY, Zhang BX, Chen XP. A Prospective Study Using Propensity Score Matching to Compare Long-term Survival Outcomes After Robotic-assisted, Laparoscopic, or Open Liver Resection for Patients With BCLC Stage 0-A Hepatocellular Carcinoma. *Ann Surg* 2023; **277**: e103-e111 [PMID: [35081573](#) DOI: [10.1097/SLA.0000000000005380](#)]
- 22 **Tsung A**, Geller DA, Sukato DC, Sabbaghian S, Tohme S, Steel J, Marsh W, Reddy SK, Bartlett DL. Robotic versus laparoscopic hepatectomy: a matched comparison. *Ann Surg* 2014; **259**: 549-555 [PMID: [24045442](#) DOI: [10.1097/SLA.0000000000000250](#)]
- 23 **Ji WB**, Wang HG, Zhao ZM, Duan WD, Lu F, Dong JH. Robotic-assisted laparoscopic anatomic hepatectomy in China: initial experience. *Ann Surg* 2011; **253**: 342-348 [PMID: [21135692](#) DOI: [10.1097/SLA.0b013e3181ff4601](#)]
- 24 **Liu R**, Liu Q, Wang F. Prognosis control surgery: From theory to practice. *Zhongguo Kexue Jianbao* 2019; **64**: 1137-48 [DOI: [10.1360/N972019-00141](#)]
- 25 **Liu R**, Wang Y, Zhang XP. Revisiting human liver anatomy: dynamic watershed theory. *Hepatobiliary Surg Nutr* 2021; **10**: 139-141 [PMID: [33575307](#) DOI: [10.21037/hbsn-20-666](#)]
- 26 **Brouwers MC**, Kho ME, Browman GP, Burgers JS, Cluzeau F, Feder G, Fervers B, Graham ID, Grimshaw J, Hanna SE, Littlejohns P, Makarski J, Zitzelsberger L; AGREE Next Steps Consortium. AGREE II: advancing guideline development, reporting and evaluation in health care. *CMAJ* 2010; **182**: E839-E842 [PMID: [20603348](#) DOI: [10.1503/cmaj.090449](#)]
- 27 **Shea BJ**, Reeves BC, Wells G, Thuku M, Moran J, Moher D, Tugwell P, Welch V, Kristjansson E, Henry DA. AMSTAR 2: a critical appraisal tool for systematic reviews that include randomised or non-randomised studies of healthcare interventions, or both. *BMJ* 2017; **358**: j4008 [PMID: [28935701](#) DOI: [10.1136/bmj.j4008](#)]
- 28 **Sterne JAC**, Savović J, Page MJ, Elbers RG, Blencowe NS, Boutron I, Cates CJ, Cheng HY, Corbett MS, Eldridge SM, Emberson JR, Hernán MA, Hopewell S, Hróbjartsson A, Junqueira DR, Jüni P, Kirkham JJ, Lasserson T, Li T, McAleenan A, Reeves BC, Shepperd S, Shrier I, Stewart LA, Tilling K, White IR, Whiting PF, Higgins JPT. RoB 2: a revised tool for assessing risk of bias in randomised trials. *BMJ* 2019; **366**: 14898 [PMID: [31462531](#) DOI: [10.1136/bmj.14898](#)]
- 29 **Stang A**. Critical evaluation of the Newcastle-Ottawa scale for the assessment of the quality of nonrandomized studies in meta-analyses. *Eur J Epidemiol* 2010; **25**: 603-605 [PMID: [20652370](#) DOI: [10.1007/s10654-010-9491-z](#)]
- 30 **Elliott JH**, Synnot A, Turner T, Simmonds M, Akl EA, McDonald S, Salanti G, Meerpohl J, MacLehose H, Hilton J, Tovey D, Shemilt I,

- Thomas J; Living Systematic Review Network. Living systematic review: 1. Introduction-the why, what, when, and how. *J Clin Epidemiol* 2017; **91**: 23-30 [PMID: 28912002 DOI: 10.1016/j.jclinepi.2017.08.010]
- 31 Guyatt GH, Oxman AD, Vist GE, Kunz R, Falck-Ytter Y, Alonso-Coello P, Schünemann HJ; GRADE Working Group. GRADE: an emerging consensus on rating quality of evidence and strength of recommendations. *BMJ* 2008; **336**: 924-926 [PMID: 18436948 DOI: 10.1136/bmj.39489.470347.AD]
 - 32 Beard RE, Tsung A. Minimally Invasive Approaches for Surgical Management of Primary Liver Cancers. *Cancer Control* 2017; **24**: 1073274817729234 [PMID: 28975827 DOI: 10.1177/1073274817729234]
 - 33 Hu M, Chen K, Zhang X, Li C, Song D, Liu R. Robotic, laparoscopic or open hemihepatectomy for giant liver haemangiomas over 10 cm in diameter. *BMC Surg* 2020; **20**: 93 [PMID: 32375738 DOI: 10.1186/s12893-020-00760-5]
 - 34 Zhu L, Liu Y, Hu M, Zhao Z, Li C, Zhang X, Tan X, Wang F, Liu R. Comparison of robotic and laparoscopic liver resection in ordinary cases of left lateral sectionectomy. *Surg Endosc* 2022; **36**: 4923-4931 [PMID: 34750706 DOI: 10.1007/s00464-021-08846-8]
 - 35 Zhang XP, Xu S, Hu MG, Zhao ZM, Wang ZH, Zhao GD, Li CG, Tan XL, Liu R. Short- and long-term outcomes after robotic and open liver resection for elderly patients with hepatocellular carcinoma: a propensity score-matched study. *Surg Endosc* 2022; **36**: 8132-8143 [PMID: 35534731 DOI: 10.1007/s00464-022-09236-4]
 - 36 Hamad A, Ansari A, Li Y, Shen C, Cloyd J, Pawlik TM, Ejaz A. Short- and long-term outcomes following robotic and open resection for intrahepatic cholangiocarcinoma: A national cohort study. *Surg Oncol* 2022; **43**: 101790 [PMID: 35717859 DOI: 10.1016/j.suronc.2022.101790]
 - 37 Chen PD, Wu CY, Hu RH, Chou WH, Lai HS, Liang JT, Lee PH, Wu YM. Robotic Versus Open Hepatectomy for Hepatocellular Carcinoma: A Matched Comparison. *Ann Surg Oncol* 2017; **24**: 1021-1028 [PMID: 27778128 DOI: 10.1245/s10434-016-5638-9]
 - 38 Nota CL, Woo Y, Raoof M, Boerner T, Molenaar IQ, Choi GH, Kingham TP, Latorre K, Borel Rinkes IHM, Hagendoorn J, Fong Y. Robotic Versus Open Minor Liver Resections of the Posterosuperior Segments: A Multinational, Propensity Score-Matched Study. *Ann Surg Oncol* 2019; **26**: 583-590 [PMID: 30334196 DOI: 10.1245/s10434-018-6928-1]
 - 39 Sucandy I, Rayman S, Lai EC, Tang CN, Chong Y, Efanov M, Fuks D, Choi GH, Chong CC, Chiow AKH, Marino MV, Prieto M, Lee JH, Kingham TP, D'Hondt M, Troisi RI, Choi SH, Sutcliffe RP, Cheung TT, Rotellar F, Park JO, Scatton O, Han HS, Pratschke J, Wang X, Liu R, Goh BKP; International Robotic, Laparoscopic Liver Resection Study Group Investigators. Robotic Versus Laparoscopic Left and Extended Left Hepatectomy: An International Multicenter Study Propensity Score-Matched Analysis. *Ann Surg Oncol* 2022; **29**: 8398-8406 [PMID: 35997903 DOI: 10.1245/s10434-022-12216-6]
 - 40 Xu J, Wei Y, Chang W. Robot-assisted procedure vs open surgery for simultaneous resection of colorectal cancer with liver metastases: short-term outcomes of a randomized controlled study. *Ann Oncol* 2017; **28**: x42- [DOI: 10.1093/annonc/mdx659.001]
 - 41 Rho SY, Lee JG, Joo DJ, Kim MS, Kim SI, Han DH, Choi JS, Choi GH. Outcomes of Robotic Living Donor Right Hepatectomy From 52 Consecutive Cases: Comparison With Open and Laparoscopy-assisted Donor Hepatectomy. *Ann Surg* 2022; **275**: e433-e442 [PMID: 32773621 DOI: 10.1097/SLA.0000000000004067]
 - 42 Cortolillo N, Patel C, Parreco J, Kaza S, Castillo A. Nationwide outcomes and costs of laparoscopic and robotic vs. open hepatectomy. *J Robot Surg* 2019; **13**: 557-565 [PMID: 30484059 DOI: 10.1007/s11701-018-0896-0]
 - 43 Lee KF, Chong C, Cheung S, Wong J, Fung A, Lok HT, Lo E, Lai P. Robotic versus open hemihepatectomy: a propensity score-matched study. *Surg Endosc* 2021; **35**: 2316-2323 [PMID: 33185767 DOI: 10.1007/s00464-020-07645-x]
 - 44 Shu J, Wang XJ, Li JW, Bie P, Chen J, Zheng SG. Robotic-assisted laparoscopic surgery for complex hepatolithiasis: a propensity score matching analysis. *Surg Endosc* 2019; **33**: 2539-2547 [PMID: 30350102 DOI: 10.1007/s00464-018-6547-8]
 - 45 Beard RE, Khan S, Troisi RI, Montalti R, Vanlander A, Fong Y, Kingham TP, Boerner T, Berber E, Kahramangil B, Buell JF, Martinie JB, Vrochides D, Shen C, Molinari M, Geller DA, Tsung A. Long-Term and Oncologic Outcomes of Robotic Versus Laparoscopic Liver Resection for Metastatic Colorectal Cancer: A Multicenter, Propensity Score Matching Analysis. *World J Surg* 2020; **44**: 887-895 [PMID: 31748885 DOI: 10.1007/s00268-019-05270-x]
 - 46 Masetti M, Fallani G, Ratti F, Ferrero A, Giuliani F, Cillo U, Guglielmi A, Ettorre GM, Torzilli G, Vincenti L, Ercolani G, Cipressi C, Lombardi R, Aldrighetti L, Jovine E. Minimally invasive treatment of colorectal liver metastases: does robotic surgery provide any technical advantages over laparoscopy? A multicenter analysis from the IGoMILS (Italian Group of Minimally Invasive Liver Surgery) registry. *Updates Surg* 2022; **74**: 535-545 [PMID: 35099776 DOI: 10.1007/s13304-022-01245-1]
 - 47 Murtha-Lemekhova A, Fuchs J, Hoffmann K. Innovation for the Sake of Innovation? How Does Robotic Hepatectomy Compare to Laparoscopic or Open Resection for HCC-A Systematic Review and Meta-Analysis. *Cancers (Basel)* 2022; **14** [PMID: 35884420 DOI: 10.3390/cancers14143359]
 - 48 Hu Y, Guo K, Xu J, Xia T, Wang T, Liu N, Fu Y. Robotic versus laparoscopic hepatectomy for malignancy: A systematic review and meta-analysis. *Asian J Surg* 2021; **44**: 615-628 [PMID: 33468382 DOI: 10.1016/j.asjsur.2020.12.016]
 - 49 Sucandy I, Shapera E, Syblis CC, Crespo K, Przetocki VA, Ross SB, Rosemurgy AS. Propensity score matched comparison of robotic and open major hepatectomy for malignant liver tumors. *Surg Endosc* 2022; **36**: 6724-6732 [PMID: 34981238 DOI: 10.1007/s00464-021-08948-3]
 - 50 Wu YM, Hu RH, Lai HS, Lee PH. Robotic-assisted minimally invasive liver resection. *Asian J Surg* 2014; **37**: 53-57 [PMID: 24642128 DOI: 10.1016/j.asjsur.2014.01.015]
 - 51 Yang HY, Rho SY, Han DH, Choi JS, Choi GH. Robotic major liver resections: Surgical outcomes compared with open major liver resections. *Ann Hepatobiliary Pancreat Surg* 2021; **25**: 8-17 [PMID: 33649249 DOI: 10.14701/ahbps.2021.25.1.8]
 - 52 Yu S, Yuan G, Lu S, Li J, Tang B, Zhong F, Su H, He S. Application of da Vinci robot and laparoscopy on repeat hepatocellular carcinoma. *J Minim Access Surg* 2022; **18**: 378-383 [PMID: 35708383 DOI: 10.4103/jmas.JMAS_111_21]
 - 53 Balzano E, Bernardi L, Tincani G, Ghinolfi D, Melandro F, Bronzoni J, Meli S, Arenga G, Biancofiore G, Crocetti L, De Simone P. Implementing a robotic liver resection program does not always require prior laparoscopic experience. *Surg Endosc* 2022; **36**: 3317-3322 [PMID: 34606006 DOI: 10.1007/s00464-021-08645-1]
 - 54 Duong LM, Cai H, Shrubsole MJ, Bailey CE, Idrees K, Shu XO. Outcomes of robotic-assisted liver surgery versus laparoscopic liver surgery for treatment of stage I hepatocellular carcinoma. *Cancer* 2022; **128**: 762-769 [PMID: 34674225 DOI: 10.1002/cncr.33979]
 - 55 Lai EC, Tang CN. Long-term Survival Analysis of Robotic Versus Conventional Laparoscopic Hepatectomy for Hepatocellular Carcinoma: A Comparative Study. *Surg Laparosc Endosc Percutan Tech* 2016; **26**: 162-166 [PMID: 27031650 DOI: 10.1097/SLE.0000000000000254]
 - 56 Lim C, Goumar C, Salloum C, Tudisco A, Napoli N, Boggi U, Azoulay D, Scatton O. Outcomes after 3D laparoscopic and robotic liver resection for hepatocellular carcinoma: a multicenter comparative study. *Surg Endosc* 2021; **35**: 3258-3266 [PMID: 32617657 DOI: 10.1007/s00464-020-07762-7]

- 57 **Magistri P**, Tarantino G, Guidetti C, Assirati G, Olivieri T, Ballarin R, Coratti A, Di Benedetto F. Laparoscopic versus robotic surgery for hepatocellular carcinoma: the first 46 consecutive cases. *J Surg Res* 2017; **217**: 92-99 [PMID: 28641762 DOI: 10.1016/j.jss.2017.05.005]
- 58 **Pesi B**, Bencini L, Moraldi L, Tofani F, Batignani G, Bechi P, Farsi M, Annecchiarico M, Coratti A. Robotic Versus Open Liver Resection in Hepatocarcinoma: Surgical and Oncological Outcomes. *Surg Laparosc Endosc Percutan Tech* 2021; **31**: 468-474 [PMID: 33480668 DOI: 10.1097/SLE.0000000000000904]
- 59 **Wang WH**, Kuo KK, Wang SN, Lee KT. Oncological and surgical result of hepatoma after robot surgery. *Surg Endosc* 2018; **32**: 3918-3924 [PMID: 29488090 DOI: 10.1007/s00464-018-6131-2]
- 60 **Shapera EA**, Ross S, Syblis C, Crespo K, Rosemurgy A, Sucandy I. Analysis of Oncological Outcomes After Robotic Liver Resection for Intrahepatic Cholangiocarcinoma. *Am Surg* 2023; **89**: 2399-2412 [PMID: 35512632 DOI: 10.1177/00031348221093933]
- 61 **Gumbs AA**, Lorenz E, Tsai TJ, Starker L, Flanagan J, Benedetti Cacciaguerra A, Yu NJ, Bajul M, Chouillard E, Croner R, Abu Hilal M. Study: International Multicentric Minimally Invasive Liver Resection for Colorectal Liver Metastases (SIMMILR-CRLM). *Cancers (Basel)* 2022; **14** [PMID: 35326532 DOI: 10.3390/cancers14061379]
- 62 **Rahimli M**, Perrakis A, Schellerer V, Gumbs A, Lorenz E, Franz M, Arend J, Negrini VR, Croner RS. Robotic and laparoscopic liver surgery for colorectal liver metastases: an experience from a German Academic Center. *World J Surg Oncol* 2020; **18**: 333 [PMID: 33353551 DOI: 10.1186/s12957-020-02113-1]
- 63 **Shapera E**, Ross S, Crespo K, Syblis C, Przetocki V, Rosemurgy A, Sucandy I. Analysis of surgical approach and tumor distance to margin after liver resection for colorectal liver metastasis. *J Robot Surg* 2022; **16**: 1427-1439 [PMID: 35199291 DOI: 10.1007/s11701-022-01387-9]
- 64 **Rocca A**, Scacchi A, Cappuccio M, Avella P, Bugiantella W, De Rosa M, Costa G, Polistena A, Codacci-Pisanelli M, Amato B, Carbone F, Ceccarelli G. Robotic surgery for colorectal liver metastases resection: A systematic review. *Int J Med Robot* 2021; **17**: e2330 [PMID: 34498805 DOI: 10.1002/ics.2330]
- 65 **Machairas N**, Dorovinis P, Kykalos S, Stamopoulos P, Schizas D, Zoe G, Terra A, Nikiteas N. Simultaneous robotic-assisted resection of colorectal cancer and synchronous liver metastases: a systematic review. *J Robot Surg* 2021; **15**: 841-848 [PMID: 33598830 DOI: 10.1007/s11701-021-01213-8]
- 66 **Amma BSPT**, Mathew JS, Varghese CT, Nair K, Mallick S, Chandran B, Menon RN, Gopalakrishnan U, Balakrishnan D, George PS, Vayoth SO, Sudhindran S. Open to robotic right donor hepatectomy: A tectonic shift in surgical technique. *Clin Transplant* 2022; **36**: e14775 [PMID: 35876772 DOI: 10.1111/ctr.14775]
- 67 **Lincango Naranjo EP**, Garcés-Delgado E, Siepmann T, Mirow L, Solis-Pazmino P, Alexander-Leon H, Restrepo-Rodas G, Mancero-Montalvo R, Ponce CJ, Cadena-Semanate R, Vargas-Cordova R, Herrera-Cevallos G, Vallejo S, Liu-Sanchez C, Prokop LJ, Ziogas IA, Vailas MG, Guerron AD, Visser BC, Ponce OJ, Barbas AS, Moris D. Robotic Living Donor Right Hepatectomy: A Systematic Review and Meta-Analysis. *J Clin Med* 2022; **11** [PMID: 35566727 DOI: 10.3390/jcm11092603]
- 68 **Yeow M**, Soh S, Starkey G, Perini MV, Koh YX, Tan EK, Chan CY, Raj P, Goh BKP, Kabir T. A systematic review and network meta-analysis of outcomes after open, mini-laparotomy, hybrid, totally laparoscopic, and robotic living donor right hepatectomy. *Surgery* 2022; **172**: 741-750 [PMID: 35644687 DOI: 10.1016/j.surg.2022.03.042]
- 69 **Nota CL**, Rinkes IHB, Molenaar IQ, van Santvoort HC, Fong Y, Hagendoorn J. Robot-assisted laparoscopic liver resection: a systematic review and pooled analysis of minor and major hepatectomies. *HPB (Oxford)* 2016; **18**: 113-120 [PMID: 26902129 DOI: 10.1016/j.hpb.2015.09.003]
- 70 **Wang JM**, Li JF, Yuan GD, He SQ. Robot-assisted versus laparoscopic minor hepatectomy: A systematic review and meta-analysis. *Medicine (Baltimore)* 2021; **100**: e25648 [PMID: 33907124 DOI: 10.1097/MD.00000000000025648]
- 71 **Daskalaki D**, Gonzalez-Heredia R, Brown M, Bianco FM, Tzvetanov I, Davis M, Kim J, Benedetti E, Giulianotti PC. Financial Impact of the Robotic Approach in Liver Surgery: A Comparative Study of Clinical Outcomes and Costs Between the Robotic and Open Technique in a Single Institution. *J Laparoendosc Adv Surg Tech A* 2017; **27**: 375-382 [PMID: 28186429 DOI: 10.1089/lap.2016.0576]
- 72 **Valverde A**, Abdallah S, Danoussou D, Goasguen N, Jouvin I, Oberlin O, Lupinacci RM. Transitioning From Open to Robotic Liver Resection. Results of 46 Consecutive Procedures Including a Majority of Major Hepatectomies. *Surg Innov* 2021; **28**: 309-315 [PMID: 32857664 DOI: 10.1177/1553350620954580]
- 73 **Croner RS**, Perrakis A, Hohenberger W, Brunner M. Robotic liver surgery for minor hepatic resections: a comparison with laparoscopic and open standard procedures. *Langenbecks Arch Surg* 2016; **401**: 707-714 [PMID: 27207697 DOI: 10.1007/s00423-016-1440-1]
- 74 **Kadam P**, Sutcliffe RP, Scatton O, Sucandy I, Kingham TP, Liu R, Choi GH, Syn NL, Gastaca M, Choi SH, Chiow AKH, Marino MV, Efanov M, Lee JH, Chong CC, Tang CN, Cheung TT, Pratschke J, Wang X, Campos RR, Ivanecz A, Park JO, Rotellar F, Fuks D, D'Hondt M, Han HS, Troisi RI, Goh BKP. International Robotic and Laparoscopic Liver Resection Study Group Investigators. An international multicenter propensity-score matched and coarsened-exact matched analysis comparing robotic versus laparoscopic partial liver resections of the anterolateral segments. *J Hepatobiliary Pancreat Sci* 2022; **29**: 843-854 [PMID: 35393759 DOI: 10.1002/jhbp.1149]
- 75 **Kim JK**, Park JS, Han DH, Choi GH, Kim KS, Choi JS, Yoon DS. Robotic versus laparoscopic left lateral sectionectomy of liver. *Surg Endosc* 2016; **30**: 4756-4764 [PMID: 26902613 DOI: 10.1007/s00464-016-4803-3]
- 76 **Lai EC**, Yang GP, Tang CN. Robot-assisted laparoscopic liver resection for hepatocellular carcinoma: short-term outcome. *Am J Surg* 2013; **205**: 697-702 [PMID: 23561638 DOI: 10.1016/j.amjsurg.2012.08.015]
- 77 **Lee KF**, Cheung YS, Chong CC, Wong J, Fong AK, Lai PB. Laparoscopic and robotic hepatectomy: experience from a single centre. *ANZ J Surg* 2016; **86**: 122-126 [PMID: 26423216 DOI: 10.1111/ans.13339]
- 78 **Mejia A**, Cheng SS, Vivian E, Shah J, Oduor H, Archarya P. Minimally invasive liver resection in the era of robotics: analysis of 214 cases. *Surg Endosc* 2020; **34**: 339-348 [PMID: 30937618 DOI: 10.1007/s00464-019-06773-3]
- 79 **Packiam V**, Bartlett DL, Tohme S, Reddy S, Marsh JW, Geller DA, Tsung A. Minimally invasive liver resection: robotic versus laparoscopic left lateral sectionectomy. *J Gastrointest Surg* 2012; **16**: 2233-2238 [PMID: 23054901 DOI: 10.1007/s11605-012-2040-1]
- 80 **Salloum C**, Lim C, Lahat E, Gavara CG, Levesque E, Compagnon P, Azoulay D. Robotic-Assisted Versus Laparoscopic Left Lateral Sectionectomy: Analysis of Surgical Outcomes and Costs by a Propensity Score Matched Cohort Study. *World J Surg* 2017; **41**: 516-524 [PMID: 27743071 DOI: 10.1007/s00268-016-3736-2]
- 81 **Tranchart H**, Ceribelli C, Ferretti S, Dagher I, Patriti A. Traditional versus robot-assisted full laparoscopic liver resection: a matched-pair comparative study. *World J Surg* 2014; **38**: 2904-2909 [PMID: 24984879 DOI: 10.1007/s00268-014-2679-8]
- 82 **Lee KF**, Fong AK, Chong CC, Cheung SY, Wong J, Lai PB. Robotic Liver Resection For Primary Hepatolithiasis: Is It Beneficial? *World J Surg* 2016; **40**: 2490-2496 [PMID: 27138884 DOI: 10.1007/s00268-016-3528-8]
- 83 **Morel P**, Jung M, Cornateanu S, Buehler L, Majno P, Toso C, Buchs NC, Rubbia-Brandt L, Hagen ME. Robotic versus open liver resections:

- A case-matched comparison. *Int J Med Robot* 2017; **13** [PMID: 28058770 DOI: 10.1002/rcs.1800]
- 84 **Cai JP**, Chen W, Chen LH, Wan XY, Lai JM, Yin XY. Comparison between robotic-assisted and laparoscopic left hemi-hepatectomy. *Asian J Surg* 2022; **45**: 265-268 [PMID: 34120821 DOI: 10.1016/j.asjsur.2021.05.017]
 - 85 **Fruscione M**, Pickens R, Baker EH, Cochran A, Khan A, Ocun L, Iannitti DA, Vrochides D, Martinie JB. Robotic-assisted versus laparoscopic major liver resection: analysis of outcomes from a single center. *HPB (Oxford)* 2019; **21**: 906-911 [PMID: 30617001 DOI: 10.1016/j.hpb.2018.11.011]
 - 86 **Lorenz E**, Arend J, Franz M, Rahimli M, Perrakis A, Negrini V, Gumbs AA, Croner RS. Robotic and laparoscopic liver resection-comparative experiences at a high-volume German academic center. *Langenbecks Arch Surg* 2021; **406**: 753-761 [PMID: 33834295 DOI: 10.1007/s00423-021-02152-6]
 - 87 **Marino MV**, Shabat G, Guarrasi D, Gulotta G, Komorowski AL. Comparative Study of the Initial Experience in Performing Robotic and Laparoscopic Right Hepatectomy with Technical Description of the Robotic Technique. *Dig Surg* 2019; **36**: 241-250 [PMID: 29539603 DOI: 10.1159/000487686]
 - 88 **Spampinato MG**, Coratti A, Bianco L, Caniglia F, Laurenzi A, Puleo F, Ettorre GM, Boggi U. Perioperative outcomes of laparoscopic and robot-assisted major hepatectomies: an Italian multi-institutional comparative study. *Surg Endosc* 2014; **28**: 2973-2979 [PMID: 24853851 DOI: 10.1007/s00464-014-3560-4]
 - 89 **Wang ZZ**, Tang WB, Hu MG, Zhao ZM, Zhao GD, Li CG, Tan XL, Zhang X, Lau WY, Liu R. Robotic vs laparoscopic hemihepatectomy: A comparative study from a single center. *J Surg Oncol* 2019; **120**: 646-653 [PMID: 31313324 DOI: 10.1002/jso.25640]
 - 90 **Chin KM**, Linn YL, Cheong CK, Koh YX, Teo JY, Chung AYY, Chan CY, Goh BKP. Minimally invasive versus open right anterior sectionectomy and central hepatectomy for central liver malignancies: a propensity-score-matched analysis. *ANZ J Surg* 2021; **91**: E174-E182 [PMID: 33719128 DOI: 10.1111/ans.16719]
 - 91 **Cho CW**, Rhu J, Kwon CHD, Choi GS, Kim JM, Joh JW, Koh KC, Kim GS. Short-Term Outcomes of Totally Laparoscopic Central Hepatectomy and Right Anterior Sectionectomy for Centrally Located Tumors: A Case-Matched Study with Propensity Score Matching. *World J Surg* 2017; **41**: 2838-2846 [PMID: 28752429 DOI: 10.1007/s00268-017-4105-5]
 - 92 **Jeung IH**, Choi SH, Kim S, Kwon SW. Laparoscopic Central Bisectionectomy and Right Anterior Sectionectomy Using Two Retraction Methods: Technical Aspects with Video. *World J Surg* 2019; **43**: 3120-3127 [PMID: 31493192 DOI: 10.1007/s00268-019-05154-0]
 - 93 **Chio AW**, Fuks D, Choi GH, Syn N, Sucandy I, Marino MV, Prieto M, Chong CC, Lee JH, Efanov M, Kingham TP, Choi SH, Sutcliffe RP, Troisi RI, Pratschke J, Cheung TT, Wang X, Liu R, D'Hondt M, Chan CY, Tang CN, Han HS, Goh BKP; International Robotic and Laparoscopic Liver Resection Study Group collaborators. International multicentre propensity score-matched analysis comparing robotic versus laparoscopic right posterior sectionectomy. *Br J Surg* 2021; **108**: 1513-1520 [PMID: 34750608 DOI: 10.1093/bjs/znab321]
 - 94 **Patriti A**, Cipriani F, Ratti F, Bartoli A, Ceccarelli G, Casciola L, Aldrighetti L. Robot-assisted versus open liver resection in the right posterior section. *JSLs* 2014; **18** [PMID: 25516700 DOI: 10.4293/JSLs.2014.00040]
 - 95 **Montalti R**, Scuderi V, Patriti A, Vivarelli M, Troisi RI. Robotic versus laparoscopic resections of posterosuperior segments of the liver: a propensity score-matched comparison. *Surg Endosc* 2016; **30**: 1004-1013 [PMID: 26123328 DOI: 10.1007/s00464-015-4284-9]
 - 96 **Zhao ZM**, Yin ZZ, Pan LC, Hu MG, Tan XL, Liu R. Robotic isolated partial and complete hepatic caudate lobectomy: A single institution experience. *Hepatobiliary Pancreat Dis Int* 2020; **19**: 435-439 [PMID: 32513586 DOI: 10.1016/j.hbpd.2020.05.003]
 - 97 **Zhao ZM**, Yin ZZ, Pan LC, Jiang N, Tan XL, Chen X, Liu R. Robotic anatomical isolated complete caudate lobectomy: Left-side approach and techniques. *Asian J Surg* 2021; **44**: 269-274 [PMID: 32747143 DOI: 10.1016/j.asjsur.2020.07.011]
 - 98 **Ziogas IA**, Evangelizou AP, Mylonas KS, Athanasiadis DI, Cherouvim P, Geller DA, Schulick RD, Alexopoulos SP, Tsoulfas G. Economic analysis of open versus laparoscopic versus robotic hepatectomy: a systematic review and meta-analysis. *Eur J Health Econ* 2021; **22**: 585-604 [PMID: 33740153 DOI: 10.1007/s10198-021-01277-1]
 - 99 **Aziz H**, Hanna K, Lashkari N, Ahmad NU, Genyk Y, Sheikh MR. Hospitalization Costs and Outcomes of Open, Laparoscopic, and Robotic Liver Resections. *Am Surg* 2022; **88**: 2331-2337 [PMID: 33861658 DOI: 10.1177/00031348211011063]
 - 100 **D'Hondt M**, Devooght A, Willems E, Wicherts D, De Meyere C, Parmentier I, Provoost A, Pottel H, Verslype C. Transition from laparoscopic to robotic liver surgery: clinical outcomes, learning curve effect, and cost-effectiveness. *J Robot Surg* 2023; **17**: 79-88 [PMID: 35322342 DOI: 10.1007/s11701-022-01405-w]
 - 101 **Hawthornth J**, Llore N, Holzner ML, Radkani P, Meslar E, Winslow E, Satoskar R, He R, Jha R, Haddad N, Fishbein T. Robotic Hepatectomy Is a Safe and Cost-Effective Alternative to Conventional Open Hepatectomy: a Single-Center Preliminary Experience. *J Gastrointest Surg* 2021; **25**: 825-828 [PMID: 33001352 DOI: 10.1007/s11605-020-04793-2]
 - 102 **Miller HP**, Hakim A, Kellish A, Wozniak M, Gaughan J, Sensenig R, Atabek UM, Spitz FR, Hong YK. Cost-Benefit Analysis of Robotic vs. Laparoscopic Hepatectomy: A Propensity-Matched Retrospective Cohort Study of American College of Surgeons National Surgical Quality Improvement Program Database. *Am Surg* 2022; **88**: 2886-2892 [PMID: 33861656 DOI: 10.1177/00031348211011124]
 - 103 **Shapera E**, Sucandy I, Syblis C, Crespo K, Ja'Karri T, Ross S, Rosemurgy A. Cost analysis of robotic versus open hepatectomy: Is the robotic platform more expensive? *J Robot Surg* 2022; **16**: 1409-1417 [PMID: 35152343 DOI: 10.1007/s11701-022-01375-z]
 - 104 **Yu YD**, Kim KH, Jung DH, Namkoong JM, Yoon SY, Jung SW, Lee SK, Lee SG. Robotic versus laparoscopic liver resection: a comparative study from a single center. *Langenbecks Arch Surg* 2014; **399**: 1039-1045 [PMID: 25366357 DOI: 10.1007/s00423-014-1238-y]
 - 105 **Sham JG**, Richards MK, Seo YD, Pillarisetty VG, Yeung RS, Park JO. Efficacy and cost of robotic hepatectomy: is the robot cost-prohibitive? *J Robot Surg* 2016; **10**: 307-313 [PMID: 27153838 DOI: 10.1007/s11701-016-0598-4]
 - 106 **Wu CY**, Chen PD, Chou WH, Liang JT, Huang CS, Wu YM. Is robotic hepatectomy cost-effective? In view of patient-reported outcomes. *Asian J Surg* 2019; **42**: 543-550 [PMID: 30704965 DOI: 10.1016/j.asjsur.2018.12.010]
 - 107 **Coletta D**, De Padua C, Parrino C, De Peppo V, Oddi A, Frigieri C, Grazi GL. Laparoscopic Liver Surgery: What Are the Advantages in Patients with Cirrhosis and Portal Hypertension? Systematic Review and Meta-Analysis with Personal Experience. *J Laparoendosc Adv Surg Tech A* 2020; **30**: 1054-1065 [PMID: 32707003 DOI: 10.1089/lap.2020.0408]
 - 108 **Dong KS**, Liang BY, Zhang ZY, Zhang EL, Yang G, Xia SL, Chen XP, Huang ZY. Histologic severity of liver cirrhosis: A key factor affecting surgical outcomes of hepatocellular carcinoma in patients with portal hypertension. *Asian J Surg* 2019; **42**: 981-989 [PMID: 30782497 DOI: 10.1016/j.asjsur.2019.01.009]
 - 109 **Lin CH**, Ho CM, Wu CH, Liang PC, Wu YM, Hu RH, Lee PH, Ho MC. Minimally invasive surgery versus radiofrequency ablation for single subcapsular hepatocellular carcinoma ≤ 2 cm with compensated liver cirrhosis. *Surg Endosc* 2020; **34**: 5566-5573 [PMID: 31993821 DOI: 10.1007/s00464-019-07357-x]
 - 110 **European Association for the Study of the Liver**. EASL Clinical Practice Guidelines: Management of hepatocellular carcinoma. *J Hepatol*

- 2018; **69**: 182-236 [PMID: [29628281](#) DOI: [10.1016/j.jhep.2018.03.019](#)]
- 111 **Birgin E**, Hartwig V, Rasbach E, Seyfried S, Rahbari M, Reeg A, Jentschura SL, Téoule P, Reißfelder C, Rahbari NN. Minimally invasive mesohepatectomy for centrally located liver lesions-a case series. *Surg Endosc* 2022; **36**: 8935-8942 [PMID: [35668311](#) DOI: [10.1007/s00464-022-09342-3](#)]
- 112 **Hawksworth J**, Radkani P, Filice R, Aguirre O, Nguyen B, Fishbein T, Winslow E. Robotic Central Hepatectomy and Right Anterior Sectionectomy: Minimally Invasive Parenchyma Sparing Surgery for Central Liver Tumors. *J Gastrointest Surg* 2023; **27**: 407-410 [PMID: [36600076](#) DOI: [10.1007/s11605-022-05554-z](#)]
- 113 **Casciola L**, Patriti A, Ceccarelli G, Bartoli A, Ceribelli C, Spaziani A. Robot-assisted parenchymal-sparing liver surgery including lesions located in the posterosuperior segments. *Surg Endosc* 2011; **25**: 3815-3824 [PMID: [21656067](#) DOI: [10.1007/s00464-011-1796-9](#)]
- 114 **Au KP**, Chan ACY. Current status of associating liver partition with portal vein ligation for staged hepatectomy: Comparison with two-stage hepatectomy and strategies for better outcomes. *World J Gastroenterol* 2019; **25**: 6373-6385 [PMID: [31798275](#) DOI: [10.3748/wjg.v25.i43.6373](#)]
- 115 **Lang H**. ALPPS - Beneficial or detrimental? *Surg Oncol* 2020; **33**: 249-253 [PMID: [31740102](#) DOI: [10.1016/j.suronc.2019.10.013](#)]
- 116 **Michal K**, Sau M, Tamara GMH, Long JR. A better route to ALPPS: minimally invasive vs open ALPPS. *Surg Endosc* 2020; **34**: 2379-2389 [PMID: [32274625](#) DOI: [10.1007/s00464-020-07437-3](#)]
- 117 **Melandro F**, Giovanardi F, Hassan R, Larghi Laureiro Z, Ferri F, Rossi M, Mennini G, Pawlik TM, Lai Q. Minimally Invasive Approach in the Setting of ALPPS Procedure: a Systematic Review of the Literature. *J Gastrointest Surg* 2019; **23**: 1917-1924 [PMID: [31197682](#) DOI: [10.1007/s11605-018-04092-x](#)]
- 118 **Vicente E**, Quijano Y, Ielpo B, Fabra I. First ALPPS procedure using a total robotic approach. *Surg Oncol* 2016; **25**: 457 [PMID: [26856770](#) DOI: [10.1016/j.suronc.2015.10.001](#)]
- 119 **Krishnamurthy J**, Naragund AV, Mahadevappa B. First Ever Robotic Stage One ALPPS Procedure in India: for Colorectal Liver Metastases. *Indian J Surg* 2018; **80**: 269-271 [PMID: [29973758](#) DOI: [10.1007/s12262-017-1713-0](#)]
- 120 **Machado MAC**, Surjan RC, Makdissi F. Robotic ALPPS. *Ann Surg Oncol* 2020; **27**: 1174-1179 [PMID: [31686346](#) DOI: [10.1245/s10434-019-08027-x](#)]
- 121 **Di Benedetto F**, Assirati G, Magistri P. Full robotic ALPPS for HCC with intrahepatic portal vein thrombosis. *Int J Med Robot* 2020; **16**: e2087 [PMID: [32011081](#) DOI: [10.1002/rcs.2087](#)]
- 122 **Masetti M**, Lombardi R, Romboli A, Jovine E. Fully Robotic ALPPS and Simultaneous Left Colectomy for Synchronous Colorectal Liver Metastases. *J Laparoendosc Adv Surg Tech A* 2020; **30**: 1106-1109 [PMID: [32762603](#) DOI: [10.1089/lap.2020.0589](#)]
- 123 **Hu MG**, Wang J, Yin ZZ, Liu R. First two-stage robotic ALPPS in HCC patients with hepatic vein invasion: a step-by-step procedure from a clinical case. *World J Surg Oncol* 2021; **19**: 58 [PMID: [33612103](#) DOI: [10.1186/s12957-021-02170-0](#)]
- 124 **Di Benedetto F**, Magistri P. First Case of Full Robotic ALPPS for Intrahepatic Cholangiocarcinoma. *Ann Surg Oncol* 2021; **28**: 865 [PMID: [32638168](#) DOI: [10.1245/s10434-020-08794-y](#)]
- 125 **Schadde E**, Ardiles V, Robles-Campos R, Malago M, Machado M, Hernandez-Alejandro R, Soubrane O, Schnitzbauer AA, Raptis D, Tschuor C, Petrowsky H, De Santibanes E, Clavien PA; ALPPS Registry Group. Early survival and safety of ALPPS: first report of the International ALPPS Registry. *Ann Surg* 2014; **260**: 829-36; discussion 836 [PMID: [25379854](#) DOI: [10.1097/SLA.0000000000000947](#)]
- 126 **Schadde E**, Raptis DA, Schnitzbauer AA, Ardiles V, Tschuor C, Lesurtel M, Abdalla EK, Hernandez-Alejandro R, Jovine E, Machado M, Malago M, Robles-Campos R, Petrowsky H, Santibanes ED, Clavien PA. Prediction of Mortality After ALPPS Stage-1: An Analysis of 320 Patients From the International ALPPS Registry. *Ann Surg* 2015; **262**: 780-5; discussion 785 [PMID: [26583666](#) DOI: [10.1097/SLA.0000000000001450](#)]
- 127 **Rimassa L**, Finn RS, Sangro B. Combination immunotherapy for hepatocellular carcinoma. *J Hepatol* 2023; **79**: 506-515 [PMID: [36933770](#) DOI: [10.1016/j.jhep.2023.03.003](#)]
- 128 **Sadeghi S**, Bejjani A, Finn RS. Systemic Therapy for Primary Liver Tumors: Cholangiocarcinoma and Hepatocellular Carcinoma. *Surg Oncol Clin N Am* 2019; **28**: 695-715 [PMID: [31472914](#) DOI: [10.1016/j.soc.2019.06.015](#)]
- 129 **Zhu P**, Liao W, Ding ZY, Chen L, Zhang WG, Zhang BX, Chen XP. Learning Curve in Robot-Assisted Laparoscopic Liver Resection. *J Gastrointest Surg* 2019; **23**: 1778-1787 [PMID: [30406576](#) DOI: [10.1007/s11605-018-3689-x](#)]
- 130 **Varghese CT**, Chandran B, Gopalakrishnan U, Nair K, Mallick S, Mathew JS, Sivasankara Pillai Thankamony Amma B, Balakrishnan D, Othiyil Vayoth S, Sudhindran S. Extended criteria donors for robotic right hepatectomy: A propensity score matched analysis. *J Hepatobiliary Pancreat Sci* 2022; **29**: 874-883 [PMID: [35411725](#) DOI: [10.1002/jhbp.1145](#)]
- 131 **Liu Q**, Zhang T, Hu M, Zhao Z, Zhao G, Li C, Zhang X, Lau WY, Liu R. Comparison of the learning curves for robotic left and right hemihepatectomy: A prospective cohort study. *Int J Surg* 2020; **81**: 19-25 [PMID: [32739547](#) DOI: [10.1016/j.ijss.2020.07.022](#)]
- 132 **Gravetz A**, Sucandy I, Wilfong C, Patel N, Spence J, Ross S, Rosemurgy A. Single-Institution Early Experience and Learning Curve with Robotic Liver Resections. *Am Surg* 2019; **85**: 115-119 [PMID: [30760356](#) DOI: [10.1177/000313481908500143](#)]
- 133 **Efanov M**, Alikhanov R, Tsvirkun V, Kazakov I, Melekhina O, Kim P, Vankovich A, Grendal K, Berelavichus S, Khatkov I. Comparative analysis of learning curve in complex robot-assisted and laparoscopic liver resection. *HPB (Oxford)* 2017; **19**: 818-824 [PMID: [28599892](#) DOI: [10.1016/j.hpb.2017.05.003](#)]
- 134 **Chen PD**, Wu CY, Hu RH, Chen CN, Yuan RH, Liang JT, Lai HS, Wu YM. Robotic major hepatectomy: Is there a learning curve? *Surgery* 2017; **161**: 642-649 [PMID: [27884614](#) DOI: [10.1016/j.surg.2016.09.025](#)]
- 135 **Goh BKP**, Teo JY, Lee SY, Kam JH, Cheow PC, Jeyaraj P, Chow PKH, Ooi L, Chung AYY, Chan CY. Critical appraisal of the impact of individual surgeon experience on the outcomes of laparoscopic liver resection in the modern era: collective experience of multiple surgeons at a single institution with 324 consecutive cases. *Surg Endosc* 2018; **32**: 1802-11 [PMID: [28916894](#) DOI: [10.1007/s00464-017-5864-7](#)]
- 136 **Chua D**, Syn N, Koh YX, Goh BKP. Learning curves in minimally invasive hepatectomy: systematic review and meta-regression analysis. *Br J Surg* 2021; **108**: 351-358 [PMID: [33779690](#) DOI: [10.1093/bjs/znaa118](#)]
- 137 **Linn YL**, Wu AG, Han HS, Liu R, Chen KH, Fuks D, Soubrane O, Cherqui D, Geller D, Cheung TT, Edwin B, Aldrighetti L, Abu Hilal M, Troisi RI, Wakabayashi G, Goh BKP; International Robotic and Laparoscopic Liver Resection Study Group Investigators. Systematic review and meta-analysis of difficulty scoring systems for laparoscopic and robotic liver resections. *J Hepatobiliary Pancreat Sci* 2023; **30**: 36-59 [PMID: [35780493](#) DOI: [10.1002/jhbp.1211](#)]
- 138 **Wakabayashi G**. What has changed after the Morioka consensus conference 2014 on laparoscopic liver resection? *Hepatobiliary Surg Nutr* 2016; **5**: 281-289 [PMID: [27500140](#) DOI: [10.21037/hbsn.2016.03.03](#)]

- 139 **Hasegawa Y**, Wakabayashi G, Nitta H, Takahara T, Katagiri H, Umemura A, Makabe K, Sasaki A. A novel model for prediction of pure laparoscopic liver resection surgical difficulty. *Surg Endosc* 2017; **31**: 5356-5363 [PMID: [28593408](#) DOI: [10.1007/s00464-017-5616-8](#)]
- 140 **Kawaguchi Y**, Fuks D, Kokudo N, Gayet B. Difficulty of Laparoscopic Liver Resection: Proposal for a New Classification. *Ann Surg* 2018; **267**: 13-17 [PMID: [28187043](#) DOI: [10.1097/SLA.0000000000002176](#)]
- 141 **Halls MC**, Berardi G, Cipriani F, Barkhatov L, Lainas P, Harris S, D'Hondt M, Rotellar F, Dagher I, Aldrighetti L, Troisi RI, Edwin B, Abu Hilal M. Development and validation of a difficulty score to predict intraoperative complications during laparoscopic liver resection. *Br J Surg* 2018; **105**: 1182-1191 [PMID: [29737513](#) DOI: [10.1002/bjs.10821](#)]
- 142 **Castaing D**, Emond J, Kunstlinger F, Bismuth H. Utility of operative ultrasound in the surgical management of liver tumors. *Ann Surg* 1986; **204**: 600-605 [PMID: [3021072](#) DOI: [10.1097/0000658-198611000-00015](#)]
- 143 **Ferrero A**, Lo Tesoriere R, Russolillo N, Viganò L, Forchino F, Capussotti L. Ultrasound-guided laparoscopic liver resections. *Surg Endosc* 2015; **29**: 1002-1005 [PMID: [25135446](#) DOI: [10.1007/s00464-014-3762-9](#)]
- 144 **Zhu P**, Liao W, Ding ZY, Luo HC, Zhang BH, Zhang WG, Zhang W, Zhang ZG, Zhang BX, Chen XP. Intraoperative ultrasonography of robot-assisted laparoscopic hepatectomy: initial experiences from 110 consecutive cases. *Surg Endosc* 2018; **32**: 4071-4077 [PMID: [30151749](#) DOI: [10.1007/s00464-017-5854-9](#)]
- 145 **Wakabayashi T**, Cacciaguerra AB, Abe Y, Bona ED, Nicolini D, Mocchegiani F, Kabeshima Y, Vivarelli M, Wakabayashi G, Kitagawa Y. Indocyanine Green Fluorescence Navigation in Liver Surgery: A Systematic Review on Dose and Timing of Administration. *Ann Surg* 2022; **275**: 1025-1034 [PMID: [35121701](#) DOI: [10.1097/SLA.0000000000005406](#)]
- 146 **Zhang X**, Xu S, Zhao Z. Application of ICG “four-zone three-phase” fluorescence imaging in robot-assisted anatomical hepatectomy. *Chin J Hepat Surg* 2021; **10**: 191-6



Published by **Baishideng Publishing Group Inc**
7041 Koll Center Parkway, Suite 160, Pleasanton, CA 94566, USA

Telephone: +1-925-3991568

E-mail: bpgoffice@wjgnet.com

Help Desk: <https://www.f6publishing.com/helpdesk>

<https://www.wjgnet.com>

