

# World Journal of *Gastroenterology*

*World J Gastroenterol* 2023 October 14; 29(38): 5361-5434



## MINIREVIEWS

- 5361 Intraductal papillary neoplasm of the bile duct: The new frontier of biliary pathology  
*Mocchegiani F, Vincenzi P, Conte G, Nicolini D, Rossi R, Cacciaguerra AB, Vivarelli M*

## ORIGINAL ARTICLE

## Basic Study

- 5374 Expression and functional study of cholecystokinin-A receptors on the interstitial Cajal-like cells of the guinea pig common bile duct  
*Xu D, Ma SL, Huang ML, Zhang H*

## Retrospective Study

- 5383 Impressive recompensation in transjugular intrahepatic portosystemic shunt-treated individuals with complications of decompensated cirrhosis based on Baveno VII criteria  
*Gao L, Li MB, Li JY, Liu Y, Ren C, Feng DP*

## Observational Study

- 5395 Hepatitis D virus dual-infection among Chinese hepatitis B patient related to hepatitis B surface antigen, hepatitis B virus DNA and age  
*Zi J, Li YH, Wang XM, Xu HQ, Liu WH, Cui JY, Niu JQ, Chi XM*

## SYSTEMATIC REVIEWS

- 5406 Scoping review on health-related physical fitness in patients with inflammatory bowel disease: Assessment, interventions, and future directions  
*Demers K, Bak MTJ, Bongers BC, de Vries AC, Jonkers DMAE, Pierik MJ, Stassen LPS*

## CASE REPORT

- 5428 Dose escalation of adalimumab as a strategy to overcome anti-drug antibodies: A case report of infantile-onset inflammatory bowel disease  
*Ancona S, Signa S, Longo C, Cangemi G, Carfora R, Drago E, La Rosa A, Crocco M, Chiaro A, Gandullia P, Arrigo S*

**ABOUT COVER**

Editorial Board Member of *World Journal of Gastroenterology*, Emilio De Raffe, MD, PhD, Assistant Professor, Consultant Surgeon, Dipartimento Medico Chirurgico delle Malattie Digestive, Epatiche ed Endocrino-metaboliche, IRCCS Azienda Ospedaliero-Universitaria di Bologna, Via Albertoni 15, Bologna 40138, Italy.

**AIMS AND SCOPE**

The primary aim of *World Journal of Gastroenterology* (WJG, *World J Gastroenterol*) is to provide scholars and readers from various fields of gastroenterology and hepatology with a platform to publish high-quality basic and clinical research articles and communicate their research findings online. WJG mainly publishes articles reporting research results and findings obtained in the field of gastroenterology and hepatology and covering a wide range of topics including gastroenterology, hepatology, gastrointestinal endoscopy, gastrointestinal surgery, gastrointestinal oncology, and pediatric gastroenterology.

**INDEXING/ABSTRACTING**

The WJG is now abstracted and indexed in Science Citation Index Expanded (SCIE), MEDLINE, PubMed, PubMed Central, Scopus, Reference Citation Analysis, China Science and Technology Journal Database, and Superstar Journals Database. The 2023 edition of Journal Citation Reports® cites the 2022 impact factor (IF) for WJG as 4.3; Quartile category: Q2. The WJG's CiteScore for 2021 is 8.3.

**RESPONSIBLE EDITORS FOR THIS ISSUE**

**Production Editor:** Ying-Yi Yuan; **Production Department Director:** Xu Guo; **Editorial Office Director:** Jia-Ru Fan.

**NAME OF JOURNAL**

*World Journal of Gastroenterology*

**ISSN**

ISSN 1007-9327 (print) ISSN 2219-2840 (online)

**LAUNCH DATE**

October 1, 1995

**FREQUENCY**

Weekly

**EDITORS-IN-CHIEF**

Andrzej S Tarnawski

**EXECUTIVE ASSOCIATE EDITORS-IN-CHIEF**

Xian-Jun Yu (Pancreatic Oncology), Jian-Gao Fan (Chronic Liver Disease), Hou-Bao Liu (Biliary Tract Disease), Naohisa Yoshida (Gastrointestinal Endoscopy)

**EDITORIAL BOARD MEMBERS**

<http://www.wjgnet.com/1007-9327/editorialboard.htm>

**PUBLICATION DATE**

October 14, 2023

**COPYRIGHT**

© 2023 Baishideng Publishing Group Inc

**PUBLISHING PARTNER**

Shanghai Pancreatic Cancer Institute and Pancreatic Cancer Institute, Fudan University  
Biliary Tract Disease Institute, Fudan University

**INSTRUCTIONS TO AUTHORS**

<https://www.wjgnet.com/bpg/gerinfo/204>

**GUIDELINES FOR ETHICS DOCUMENTS**

<https://www.wjgnet.com/bpg/GerInfo/287>

**GUIDELINES FOR NON-NATIVE SPEAKERS OF ENGLISH**

<https://www.wjgnet.com/bpg/gerinfo/240>

**PUBLICATION ETHICS**

<https://www.wjgnet.com/bpg/GerInfo/288>

**PUBLICATION MISCONDUCT**

<https://www.wjgnet.com/bpg/gerinfo/208>

**POLICY OF CO-AUTHORS**

<https://www.wjgnet.com/bpg/GerInfo/310>

**ARTICLE PROCESSING CHARGE**

<https://www.wjgnet.com/bpg/gerinfo/242>

**STEPS FOR SUBMITTING MANUSCRIPTS**

<https://www.wjgnet.com/bpg/GerInfo/239>

**ONLINE SUBMISSION**

<https://www.f6publishing.com>

**PUBLISHING PARTNER'S OFFICIAL WEBSITE**

<https://www.shca.org.cn>  
<https://www.zs-hospital.sh.cn>



## Intraductal papillary neoplasm of the bile duct: The new frontier of biliary pathology

Federico Mocchegiani, Paolo Vincenzi, Grazia Conte, Daniele Nicolini, Roberta Rossi, Andrea Benedetti Cacciaguerra, Marco Vivarelli

**Specialty type:** Gastroenterology and hepatology

**Provenance and peer review:** Invited article; Externally peer reviewed.

**Peer-review model:** Single blind

**Peer-review report's scientific quality classification**

Grade A (Excellent): 0  
Grade B (Very good): 0  
Grade C (Good): C, C  
Grade D (Fair): 0  
Grade E (Poor): 0

**P-Reviewer:** Kawabata H, Japan;  
Saengboonmee C, Thailand

**Received:** May 31, 2023

**Peer-review started:** May 31, 2023

**First decision:** July 23, 2023

**Revised:** August 7, 2023

**Accepted:** August 31, 2023

**Article in press:** August 31, 2023

**Published online:** October 14, 2023



**Federico Mocchegiani, Andrea Benedetti Cacciaguerra, Marco Vivarelli,** Department of Experimental and Clinical Medicine, Polytechnic University of Marche, Ancona 60126, Italy

**Paolo Vincenzi, Grazia Conte, Daniele Nicolini, Roberta Rossi,** Department of Gastroenterology and Transplant, United Hospital of Marche, Ancona 60126, Italy

**Corresponding author:** Federico Mocchegiani, MD, Associate Professor, Department of Experimental and Clinical Medicine, Polytechnic University of Marche, Via Tronto 10 a, Ancona 60126, Italy. [federico.mocchegiani@ospedaleiriuniti.marche.it](mailto:federico.mocchegiani@ospedaleiriuniti.marche.it)

### Abstract

Intraductal papillary neoplasms of the bile duct (IPNBs) represent a rare variant of biliary tumors characterized by a papillary growth within the bile duct lumen. Since their first description in 2001, several classifications have been proposed, mainly based on histopathological, radiological and clinical features, although no specific guidelines addressing their management have been developed. Bile duct neoplasms generally develop through a multistep process, involving different precursor pathways, ranging from the initial lesion, detectable only microscopically, *i.e.* biliary intraepithelial neoplasia, to the distinctive grades of IPNB until the final stage represented by invasive cholangiocarcinoma. Complex and advanced investigations, mainly relying on magnetic resonance imaging (MRI) and cholangioscopy, are required to reach a correct diagnosis and to define an adequate bile duct mapping, which supports proper treatment. The recently introduced subclassifications of types 1 and 2 highlight the histopathological and clinical aspects of IPNB, as well as their natural evolution with a particular focus on prognosis and survival. Aggressive surgical resection, including hepatectomy, pancreaticoduodenectomy or both, represents the treatment of choice, yielding optimal results in terms of survival, although several endoscopic approaches have been described. IPNBs are newly recognized preinvasive neoplasms of the bile duct with high malignant potential. The novel subclassification of types 1 and 2 defines the histological and clinical aspects, prognosis and survival. Diagnosis is mainly based on MRI and cholangioscopy. Surgical resection represents the mainstay of treatment, although endoscopic resection is currently applied to nonsurgically fit patients. New frontiers in genetic research have identified the processes underlying the carcinogenesis of IPNB, to identify targeted therapies.



**Key Words:** Intraductal neoplasm of the bile duct; Bile duct neoplasms; Cholangiocarcinoma; Intraductal papilloma; Classification; Treatment

©The Author(s) 2023. Published by Baishideng Publishing Group Inc. All rights reserved.

**Core Tip:** Intraductal papillary neoplasms of the bile duct are rare premalignant lesions, which are especially prevalent in East Asia. Due to the lack of specific guidelines addressing their management, recent subclassification of types 1 and 2 clarifies several aspects, particularly histopathological, clinical and prognostic features. Magnetic resonance imaging and cholangioscopy occupy a central role in diagnosis and treatment. Surgery is the most appropriate treatment, yielding optimal results in terms of survival, although endoscopic techniques have been used, particularly in nonsurgically fit patients. Lastly, recent genetic research has focused on identifying targeted therapies acting on the stepwise progression of neoplastic biliary epithelium.

**Citation:** Mocchegiani F, Vincenzi P, Conte G, Nicolini D, Rossi R, Cacciaguerra AB, Vivarelli M. Intraductal papillary neoplasm of the bile duct: The new frontier of biliary pathology. *World J Gastroenterol* 2023; 29(38): 5361-5373

**URL:** <https://www.wjgnet.com/1007-9327/full/v29/i38/5361.htm>

**DOI:** <https://dx.doi.org/10.3748/wjg.v29.i38.5361>

## INTRODUCTION

Intraductal papillary neoplasms of the bile duct (IPNBs), first described by Chen *et al*[1] in 2001, are a type of biliary tumors with a distinctive papillary growth inside the common bile duct lumen, and typically develop along the biliary tree. IPNBs are identified macroscopically, according to bile duct dilatation and intraductal masses apparent upon radiologic imaging[2-4]. Together with biliary intraepithelial neoplasia (BilIN)[5], IPNBs were first recognized as a premalignant lesion of invasive cholangiocarcinoma (CCA) in the 2010 World Health Organization (WHO) classification of tumors of the digestive system[6]. The term IPNB was introduced because of the similarities with intraductal papillary mucinous neoplasms (IPMNs) of the pancreas (IPMN-Ps). IPNBs are considered the biliary counterparts of IPMN-Ps[3,7,8], even though the simultaneous occurrence of both types is rare[9-19].

IPNBs are complex and generally require extensive multidisciplinary investigation. Accurate diagnosis of IPNB is mandatory to guide the therapeutic approach, with aggressive surgical resection being the treatment of choice, particularly in early stages. Endoscopic management has been described as a potential alternative in nonsurgically fit patients [20-24]. This review summarizes the current and latest concepts regarding IPNB, discusses the various morphological features of IPNB and its mimickers, and describes clinical approaches in the diagnosis and treatment that are useful for multidisciplinary management.

## DEFINITION, EPIDEMIOLOGY AND CLINICAL FEATURES

### Definition

Invasive bile duct neoplasms, *e.g.*, CCA[25], always develop through a multistep process, involving the two above-mentioned precursors: BilIN and IPNB[5]. While BilIN is a flat or low-papillary growth of dysplastic biliary epithelium, detected only microscopically, IPNB consists of an intraductal papillary growth of neoplastic biliary epithelium that can be identified macroscopically and is therefore visible on imaging[3,5].

BilINs have been classified into three grades described as mild, moderate and severe dysplasia, or as low-grade dysplasia, high-grade dysplasia and carcinoma *in situ*[26]. Recently, several cytological features, namely detailed cellular and nuclear changes, glandular involvement, mitosis, nuclear location and intraepithelial neutrophils, have been incorporated into the categorization of BilINs, allowing the identification of three histological grades: BilIN-1, BilIN-2 and BilIN-3 (including the so-called carcinoma *in situ*)[26].

IPNBs are typically represented by a papillary or villous tumor growing inside the bile duct lumen and composed of papillary stalks with fine vascular cores that can develop anywhere along the biliary tree, involving both the intrahepatic and extrahepatic bile ducts[2-4]. Although already described in 2001[1], the term IPNB was introduced by the revised WHO Classification of Tumors of the Digestive System in 2010[6], incorporating different entities; for example, the previously named mucin-producing CCA, papillary CCA (PCC), mucin-hypersecreting bile duct tumor, IPMN of the bile duct, biliary papilloma or papillomatosis, papillary adenocarcinoma of the bile duct, and intraductal growth type CCA[5,6].

### Epidemiology, risk factors and clinical features

IPNB is an uncommon disease, with a prevalence of 5%-15% among bile duct tumors and mainly reported in series from East Asia[22,27-30]. It is reported in relation to specific and common risk factors identified such as hepatolithiasis and

liver parasitic infections (*Clonorchis sinensis* and *Opisthorchis viverrini*)[2,4]. Other series described the association of IPNB with hepatocellular carcinoma[31], primary sclerosing cholangitis[32] and mixed adenoneuroendocrine carcinoma[33]. Conversely, IPNBs have been described only in isolated reports from Europe, with a propensity of a more invasive course and an extrahepatic location in comparison to those reported in eastern centers[5,34-36]. Similarly, previous reports describing the association of IPNBs with IPMN-Ps are sporadic, as summarized in Table 1[9-19].

IPNB tends to be more frequent in men aged > 65 years, presenting clinically with right upper abdominal discomfort/pain, jaundice, and cholangitis. It has been demonstrated that 5%-29% of patients might be asymptomatic[2,37]. Elevation of total and direct bilirubin, alkaline phosphatase, -glutamyl transferase, alanine aminotransferase and aspartate aminotransferase are common laboratory findings. Increased levels of tumor markers, *i.e.* carcinoembryonic antigen (CEA) and carbohydrate antigen (CA)19-9, have been documented in approximately 25% and 40% of patients, respectively[37].

Although the mucin produced by IPNBs is usually retained inside the neoplastic cells, in up to one-third of cases, elevated quantities of mucin are secreted into the bile duct lumen, leading to intermittent obstruction of the bile flow with consequent upstream and downstream duct dilatation[5]. This particular type of IPNB has been named by some authors as IPMNs of the bile duct[5].

## HISTOLOGIC AND MACROSCOPIC FEATURES

### Histologic aspects

No precise criteria for grading the biliary epithelium dysplasia within IPNBs have been established. Some authors have divided IPNBs into four types based on the worsening degree of dysplasia, ranging from type 1, low grade, to type 4, stromal invasion of adenocarcinoma[2,5]. Others have classified IPNBs into noninvasive and invasive lesions, including adenoma, borderline tumor, and carcinoma *in situ* in the first group and tubular or mucinous adenocarcinoma in the other group[30,37]. Invasive carcinomas arising from IPNBs have been described in 30%-75% of cases, according to the different surgical series, with a 9%-15% rate of lymph node metastasis at the time of surgical resection[2,27-29,38] and an overall better prognosis when compared to normal CCA[2,21,22,28,39].

Anatomical location and geographical distribution of IPNBs have been correlated with the risk of stromal invasion. Stromal invasion is higher in tumors originating in the extrahepatic bile ducts, and in those affecting Caucasian patients, suggesting a more indolent course of intrahepatic IPNBs (I-IPNBs) and in those occurring in Asian countries[2,3,28,38,40]. Nakanuma *et al*[41] recently reviewed the pathological features of invasive carcinoma associated with IPNB, identifying three different patterns of increasing invasiveness, A, B and C. The first showed a favorable postoperative overall survival (OS) similar to that of noninvasive types, in contrast to the latter two that might be considered clinically advanced entities.

The neoplastic epithelia of IPNB is categorized into four histological phenotypes according to hematoxylin and eosin staining: pancreatobiliary (PB), intestinal, gastric and oncocytic[3,4,42] (Figure 1). The PB type consists of columnar or cuboidal cells with eosinophilic cytoplasm, round hyperchromatic nuclei and scarce mucinous appearance. This variant is usually immunohistochemically positive for mucin (MUC)1, MUC5AC, cytokeratin (CK)7 and S100P[3,4,42]. The intestinal type resembles a colorectal villous neoplasm, showing columnar cells with cigar-shaped nuclei, basophilic cytoplasm, and variable amount of supranuclear mucin. Immunohistochemically, the cells express MUC2 and MUC5AC but not MUC1[3,4,42]. The gastric type features the gastric foveolar epithelium, consisting of tall columnar cells with basally oriented nuclei and abundant cytoplasmic mucin, generally associated with pyloric glands. While the latter are typically positive for MUC6, the foveolar portions frequently express MUC5AC and CK7 but rarely MUC1 and MUC2[3,4,42]. The oncocytic type presents with convoluted and branching papillae lined by one or different layers of cuboidal/columnar cells with hyperchromatic, round and large nuclei, and abundant, intensely eosinophilic cytoplasm, consistently expressing MUC5AC and focally MUC1 and/or MUC2[3,4,42].

The PB and intestinal patterns are the most common and usually associated with invasive lesions. The remaining two histological types are uncommon and generally present with an indolent course[3,4,42] (Figure 2).

### Macroscopic and radiological aspects

Four morphological subtypes have been recognized based on the gross pathological picture: polypoid, superficial-spreading, cystic, and cast-like[5,42]. The polypoid type describes an intraductal lesion, pedunculated or sessile, sometimes reaching great dimensions. Differential diagnosis involves typical CCA and bile duct stones when tumor pieces disintegrate inside the bile ducts[5,42].

The superficial spreading type depicts a tumor barely visible on imaging that spreads along varying lengths of the bile ducts. Radiologically, it appears as isolated bile duct dilatation without an obvious obstructing lesion, secondary to copious mucin production by the tumor. Any biliary obstruction leading to bile duct dilatation can mimic this form, although a real stricture cannot generally be identified in this variant of IPNB[5,42].

The cystic type develops as a focal cystic dilatation of a bile duct that maintains the communication with the lumen of the adjacent bile duct, thus configuring the pattern of a pseudocyst. This feature allows differentiation of the cystic type IPNB from the mucinous cystic neoplasms, *i.e.* cystadenomas and cystadenocarcinomas, where in the absence of a luminal communication, mucin secretion is confined within the neoplastic cyst. In addition, the presence of ovarian-like stroma is necessary to diagnose mucinous cystic neoplasms[5,42]. Lastly, mural nodules or mucin aggregates are common findings in this form of IPNB[5].

**Table 1 Summary of reported synchronous intraductal papillary neoplasms of the bile duct and pancreas**

Refs	Age (yr)	Sex	IPNB			IPMN-P			Treatment
			Site	Size (cm)	Histology	Site	Size (cm)	Histology	
Joo <i>et al</i> [9]	60	M	LL	1.5 × 1.5	Benign	T	2.5 × 2.5	Benign	LH + SPDP
Ishida <i>et al</i> [10]	67	M	S1	4 × 3	Benign	UP	3.5 × 3	Benign	LH + S1 segmentectomy + resection of uncinate process
Yamaguchi <i>et al</i> [11]	69	M	S2-3	6.5 × 3.5	Malignant	H	3 × 2.5	Malignant	S2-3 segmentectomy + PPPD
Zalinski <i>et al</i> [12]	65	F	LL	10 × 10	Malignant	H	NR	High-grade dysplasia	NR
Park <i>et al</i> [13]	67	M	S2-3	NR	Medium-grade dysplasia	T	2.5 × 1	Medium-grade dysplasia	S2-3 segmentectomy + DP + splenectomy
Xu <i>et al</i> [14]	68	F	S2-3	5 × 4	Benign	T	0.5:1	Benign	laparoscopic S2-3 segmentectomy + SPDP
Valente <i>et al</i> [15]	76	F	CBD + LHD + RHD	2.5 × 1.8	Malignant	UP + T	1:1.3	Malignant	CHT + RT
Ren <i>et al</i> [16]	52	M	Distal CBD	NR	Malignant	EP	NR	Benign	PPTP
Luvira <i>et al</i> [17]	53	M	CBD + LHD + RHD	NR	Malignant	EP	NR	Low-grade dysplasia	L trisectionectomy + PPTP + splenectomy
Moon <i>et al</i> [18]	66	F	LL	NR	Malignant	EP	NR	Malignant	LH + TP + splenectomy
Tarantino <i>et al</i> [19]	55	F	CBD	NR	NR	H	11	Malignant	NR

IPNB: Intraductal papillary neoplasm of the bile duct; IPMN-P: Intraductal papillary mucinous neoplasm-pancreatic; M: Male; F: Female; LL: Left lobe; T: Tail; LH: Left hepatectomy; SPDP: Spleen preserving distal pancreatectomy; EP: Entire pancreas; UP: Uncinate process; H: Head; PPPD: Pylorus preserving pancreaticoduodenectomy; NR: Not reported; DP: Distal pancreatectomy; CBD: Common bile duct; LHD: Left hepatic duct; RHD: Right hepatic duct; CHT: Chemotherapy; RT: Radiotherapy; PPTP: Pylorus preserving total pancreatectomy; TP: Total pancreatectomy.

In the cast-like type, the tumor occupies the lumen of the bile duct, expanding along the longitudinal axis. Although radiologically it appears as a cast-like lesion, histologically it presents as a polyp, with only a small attachment to the biliary epithelium[5,42].

This macroscopic classification presents some common elements with the classification of mucin-producing CCA proposed by Sakamoto *et al*[43] in 1997, which included the duct-ectatic, cystic and intermediate types. In the first group, papillary tumors developed within diffusely dilated intrahepatic ducts. In the second, large cystic lesions with papillary projections were found inside the liver, communicating with intrahepatic bile ducts. In the latter pattern, large cystic lesions were intermingled with solid tumors invading the liver parenchyma[43]. Histologically, all the CCAs were papillary adenocarcinoma, demonstrating a superficial spread along the bile duct mucosa in almost half of the cases[43].

## CLASSIFICATIONS

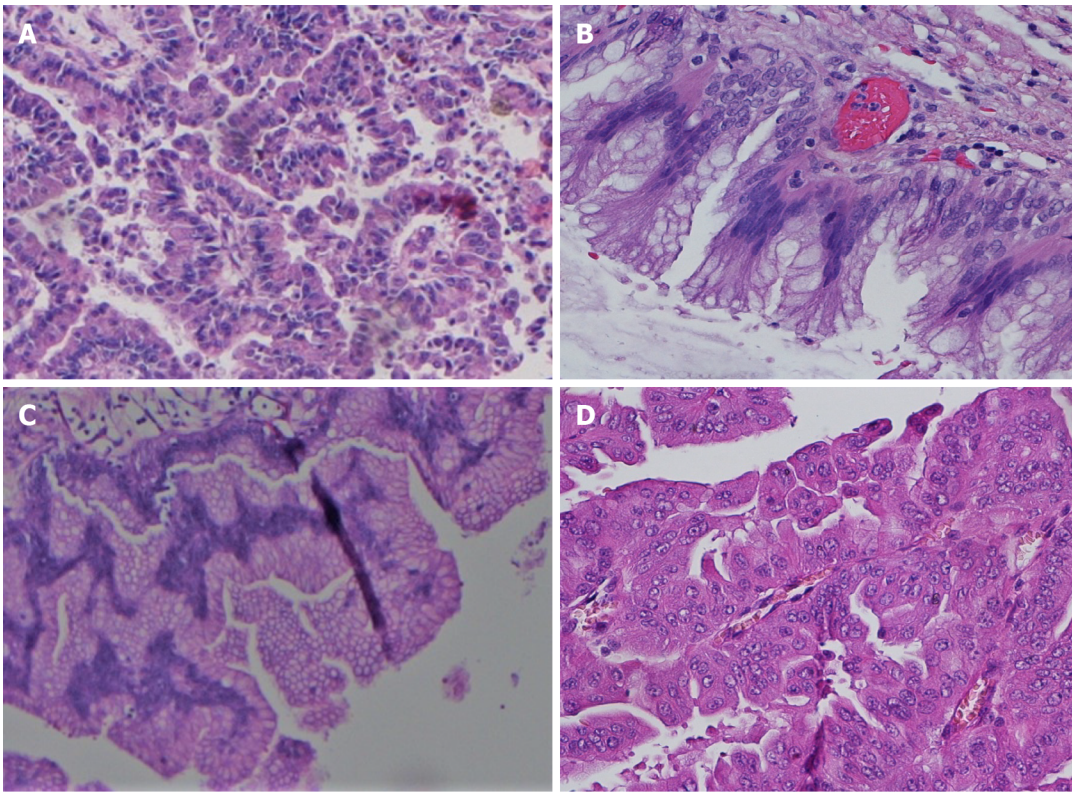
Recently, Kim *et al*[44] resumed the duct-ectatic and cystic subgroups of I-IPNBs that together accounted for most tumors in their surgical series (68.5%), while the remaining were extrahepatic (26.6%) and diffuse (4.1%) types. The latter included lesions diffusely affecting both the intrahepatic and extrahepatic bile ducts. In this modified anatomical classification, as named by the authors, no significant difference in terms of OS was recorded among the three groups[44].

Another radiological-pathological classification was introduced by Luvira *et al*[45] in 2017. Five different categories of IPNB were described in their series of 103 patients: (1) Classical I-IPNB with an intraductal tumor determining unilateral duct dilatation; (2) extrahepatic IPNB (E-IPNB) with an intraductal tumor producing bilateral intrahepatic duct dilatation; (3) cystic lesion with a papillary tumor inside, communicating with the lumen of the bile duct; (4) micropapillary tumor causing disproportionate bile duct dilatation without a clear lesion radiologically evident; and (5) mass-forming tumor with macroinvasion[45]. Their analysis concluded that the category of IPNB and the presence of lymph node metastasis represented the only significant prognostic factors, with class II and V showing worse OS[45].

### Novel subclassification of types 1 and 2 IPNBs

In 2020, the Japan Biliary Association and the Korean Association of Hepato-Biliary-Pancreatic Surgery, after retro-





DOI: 10.3748/wjg.v29.i38.5361 Copyright ©The Author(s) 2023.

**Figure 1** Histological subtypes of intraductal papillary neoplasms of the bile duct. A: Pancreatobiliary; B: Intestinal; C: Gastric; D: Oncocytic. Hematoxylin and eosin staining.

spectively reviewing the clinicopathological data of 694 patients who had undergone surgery for IPNB over a 20-year period, proposed new histopathological diagnostic criteria and identified types 1 and 2 IPNB[28]. Type 1 showed a regular growth with papillary, villous or tubular homogenous structures, thin papillary fibrovascular stalks and a large amount of mucin, and type 2 displayed a heterogenous appearance and an irregular growth with complicated structures, such as cribriform, compact tubular, solid or large cystic components and rare mucin overproduction[28] (Figure 3). In addition, associated invasive carcinoma was reported in almost all cases of type 2 lesions (93.6%), while low-intermediate- or high-grade dysplasia was observed in 9.7% and 40.2% of type 1 lesions, respectively, with ~50% of these exhibiting stromal invasion[28]. The intestinal and gastric histological subtypes were generally associated with type 1, while incidence of the PB subtype was significantly higher in the second group[28].

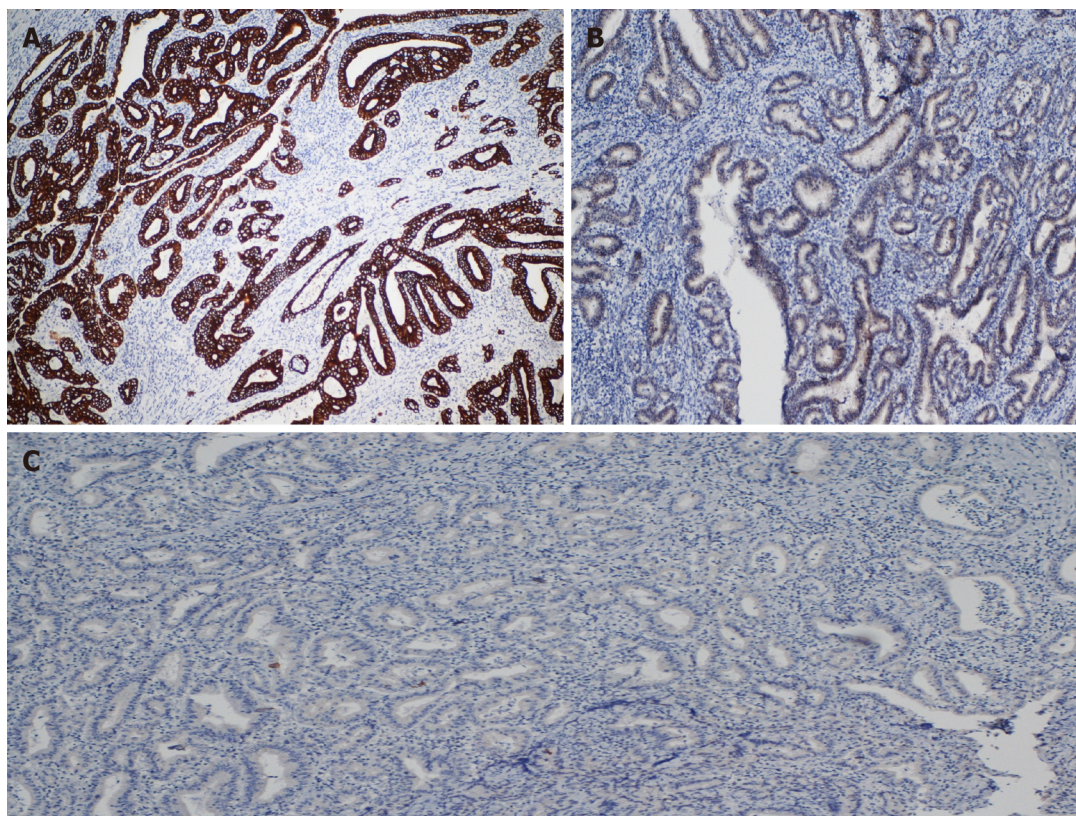
Clinically, type 1, representing the majority (75%) of tumors reviewed in that multicenter analysis, tended to be more frequent at the level of intrahepatic bile ducts. Conversely, the type 2 tended to develop inside the extrahepatic ducts leading to significantly higher levels of bilirubin, alkaline phosphatase, -glutamyl transferase, alanine aminotransferase, aspartate aminotransferase and tumor markers (CEA and CA19-9), with increased occurrences of liver dysfunction, jaundice and pain[28].

Radiologically, type 1 IPNB typically presented with the aspects of extensive cystic duct dilatation or intraductal cauliflower-like lesion, whereas an intraductal solid mass determining upstream duct dilatation was the classic pattern of type 2[46]. The above-mentioned study highlighted that bile duct margin status after surgical resection did not affect OS and disease-free survival (DFS) in both groups, and there was no significant difference in recurrence rate (RR) observed between types 1 and 2, although lymph node metastasis rate was significantly higher in type 2[28]. Nevertheless, patients with type 2 IPNBs had significantly lower OS and DFS at 1, 3 and 5 years when compared to those with type 1 IPNBs, leading the authors to conclude that their new classification might be strongly predictive of the patient outcome[28].

Although the above-mentioned binary classification was included in the most recent WHO classification of digestive system tumors[47], the differential diagnosis between these two types of IPNBs has been challenging, particularly in the hands of unexperienced pathologists. Accordingly, Onoe *et al*[30] developed a scoring system based on six pathological features aimed at differentiating between type 1 and 2 IPNBs. Lesions scoring a total of 5 or 6 were categorized as type 1, whereas those scoring 0 or 1 and 2-4 were categorized as type 2 or unclassifiable, respectively. The authors confirmed the findings of a prevalent intrahepatic location of type 1 IPNB in comparison to the extrahepatic site for type 2, and the survival rates were higher in the first group compared to type 2 or unclassifiable lesions[30].

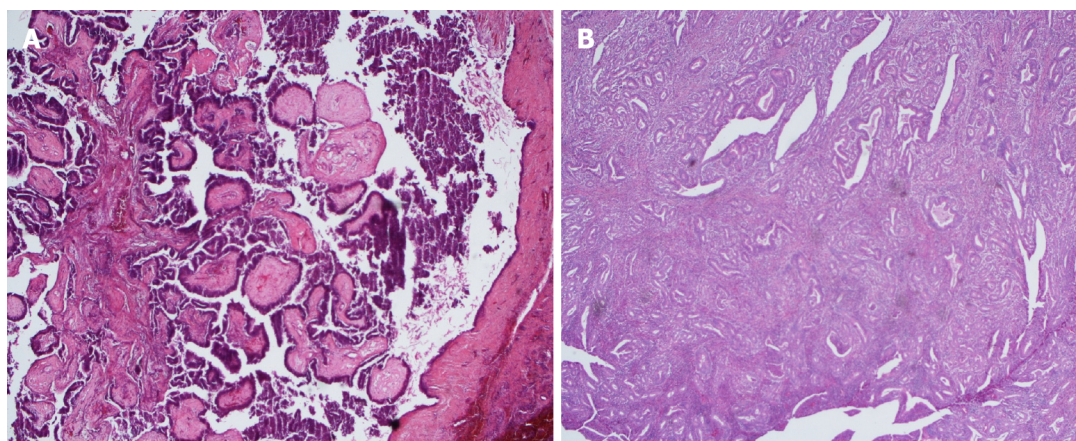
As other authors have suggested[2,46], type 1 IPNBs might be considered the real biliary counterpart of IPMN-Ps, particularly the main duct variant, while type 2 might be identified as PCC, indicating that papillary bile duct tumors occupy a single continuous spectrum, ranging from less advanced forms, *i.e.* type 1, to more advanced forms, *i.e.* type unclassifiable and type 2. The geographic distribution is divergent between types 1 and 2, with the former being predominant in Asia and the latter in Europe and the USA[46,48].





DOI: 10.3748/wjg.v29.i38.5361 Copyright ©The Author(s) 2023.

**Figure 2** Histological features of intraductal papillary neoplasms of the bile duct with irregular growth pattern and foci of invasive carcinoma (pancreatobiliary type). A: Immunostaining positive for cytokeratin (CK)19; B: Immunostaining negative for CDX2; C: Immunostaining negative for CK20.



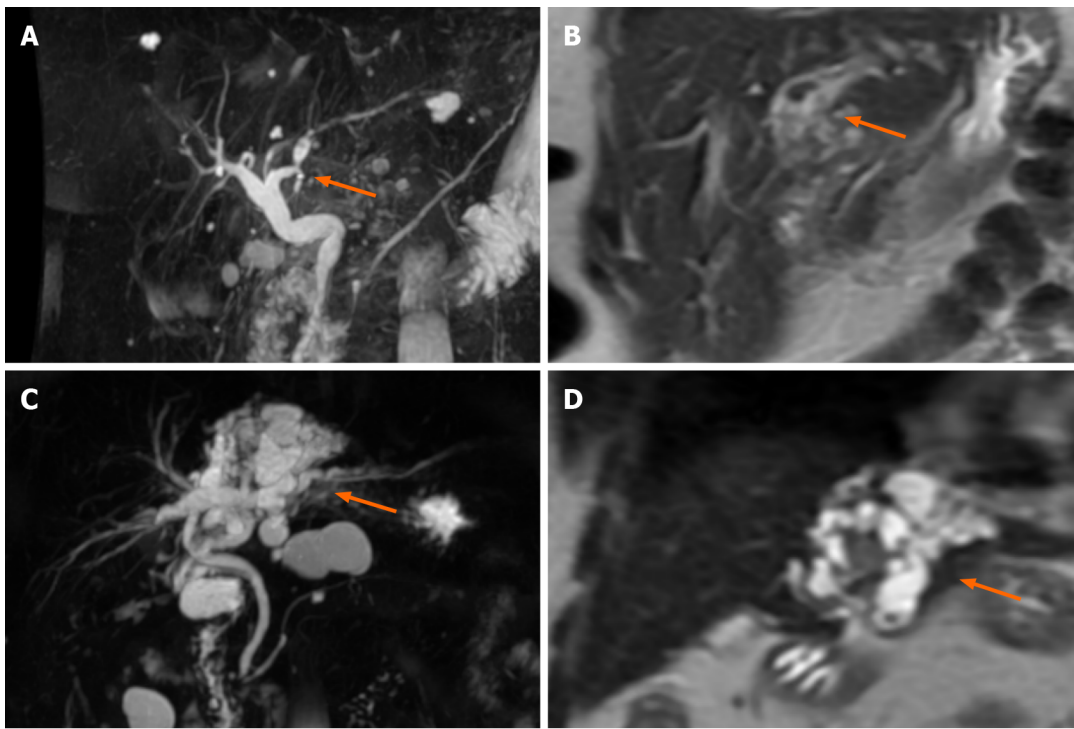
DOI: 10.3748/wjg.v29.i38.5361 Copyright ©The Author(s) 2023.

**Figure 3** Subclassification of intraductal papillary neoplasms of the bile duct according to the Japan Biliary Association and the Korean Association of Hepato-Biliary-Pancreatic Surgery. A: Type 1 consists of papillary, villous or tubular homogenous structures with thin papillary fibrovascular stalks; B: Type 2 consists of thick papillary glands with irregular branching, often intermingled with solid irregular components. Hematoxylin and eosin staining.

## DIAGNOSIS: CROSS-SECTIONAL IMAGING, ENDOSCOPY AND CHOLANGIOSCOPY

Routine diagnostic methods used in IPNBs are represented by computed tomography (CT) and magnetic resonance imaging (MRI), commonly showing intraductal masses associated with bile duct dilatation[42]. On CT, IPNBs generally present an enhancement pattern of isointensity or hyperintensity during the late arterial phase with an occasional intense rim enhancement at the base of the lesions. On MRI, IPNBs tend to be hypointense on T1-weighted images and hyperintense on T2-weighted images, which has the advantage of identifying small intraductal or multiple tumors[2,4,37] (Figure 4).





DOI: 10.3748/wjg.v29.i38.5361 Copyright ©The Author(s) 2023.

**Figure 4** Magnetic resonance imaging of intraductal papillary neoplasms of the bile duct. A: Magnetic resonance cholangiopancreatography showed an intraductal lesion of the left hepatic duct with upstream bile duct dilatation; B: Diffuse dilatation of the intrahepatic left lobe bile ducts with low intensity tumors (T2 weighted image, coronal section); C: Magnetic resonance cholangiopancreatography showed a cystic type intraductal papillary neoplasm of the bile duct; D: Cystic type intraductal papillary neoplasm of the bile duct (T2 weighted image, coronal section).

Lee *et al*[20] recognized significant features on MRI that are useful in differentiating IPNBs with an associated invasive carcinoma from noninvasive forms. They included an intraductal visible mass, tumor size  $\geq 2.5$  cm, tumor multiplicity, adjacent organ invasion, and bile duct wall thickening. Bile duct wall thickening had the highest diagnostic accuracy. However, the superficial spread and progression of IPNBs along the bile duct mucosa might be underestimated by conventional imaging[21]. For this reason, intraductal ultrasonography and direct cholangioscopy play a central role in assessing these parameters; that is, the depth and extent of invasion, and in performing a biopsy of the lesion[2,21].

Nevertheless, the discrepancy between the preoperative biopsy and the definitive histology after surgical resection might be notable, particularly in E-IPNB, with a reported negative predictive value of ~40%. This means that ~60% of patients with a preoperative diagnosis of nonmalignancy actually have an invasive carcinoma by definitive pathology [40]. Since these two methods have been widely applied in the evaluation of IPNBs, the current applications of endoscopic retrograde cholangiography are limited, apart from determining the presence of mucobilia or direct communication between a cystic lesion and the bile duct[4] (Figure 5). Therefore, classifications of IPNBs based on their cholangiographic patterns, such as the one proposed by Yeh *et al*[49], no longer have a significant clinical utilization.

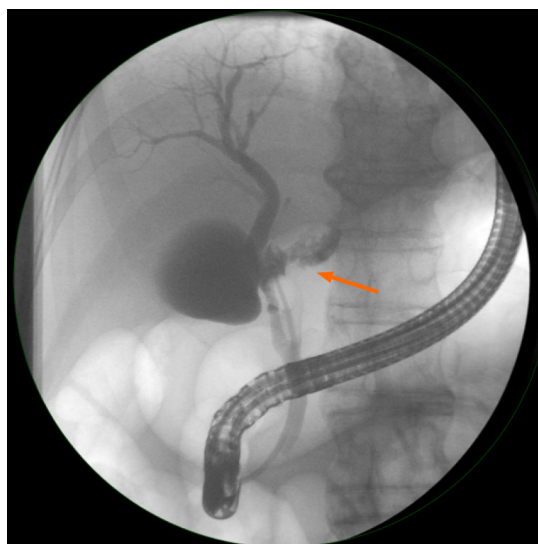
### High-risk stigmata of malignancy

Few studies have focused on the analysis of features that might anticipate the risk of invasiveness and/or malignant degeneration in IPNBs[29,40]. In a recent large surgical series, the presence of CEA  $> 5$  IU/mL, CA19-9  $> 37$  IU/L, a mural nodule  $> 12$  mm, intrahepatic calculi and lymph node enlargement were identified as potential predictors of malignancy in I-IPNB, while total bilirubin  $> 3$  mg/dL, enhancement of mural nodules and CA19-9  $> 37$  IU/L were potential risk factors in E-IPNB[40].

However, after multivariate analysis, mural nodule  $> 12$  mm [relative risk (RR): 5.33, 95% confidence interval (CI): 1.05-26.89,  $P = 0.043$ ] and the enhancement of mural nodules (RR: 19.08, 95% CI: 1.08-335.5,  $P = 0.044$ ) were confirmed as the only significant predictors of malignancy in I-IPNB and E-IPNB, respectively[40]. These two features were identified as absolute surgical indications in IPMN-Ps, according to the 2018 European Guidelines and the 2017 International Consensus Guidelines[50,51].

## TREATMENT

Based on the remarkable frequency of high-grade dysplasia or invasive carcinoma and of symptoms reported in IPNBs and on the poor sensitivity of preoperative biopsy, particularly in invasive forms, treatment should be considered mandatory, with surgery representing the main therapeutic option[21].



DOI: 10.3748/wjg.v29.i38.5361 Copyright ©The Author(s) 2023.

**Figure 5** Endoscopic retrograde cholangiopancreatography of an intrahepatic intraductal papillary neoplasm of the bile duct showed a direct communication between the cystic lesion and the bile duct.

### Surgical resection

The type and extent of surgical resection depends on the location of the IPNB, with bile duct resection or pancreaticoduodenectomy applied to E-IPNB and hepatic resection to I-IPNB. Regional lymphadenectomy should always be carried out since the incidence of regional lymph node metastasis is estimated to be 9%-15%[2,27-29].

R0 resection has been reportedly achieved in 90% of patients[4], and the presence of residual disease, including dysplasia, in the resection margin should indicate further resection, although specific guidelines are not available[21]. According to Uemura *et al*[52] and Luvira *et al*[53], only the bile duct margin positive for carcinoma represented a significant poor prognostic factor. Jung *et al*[54] reported the presence of any dysplasia, even if low, in the bile duct margin as having a significant impact on OS and DFS to the same extent as carcinoma *in situ* or invasive carcinoma. Similarly, Youn *et al*[29] identified R1 resection (although, not specifying any dysplasia or carcinoma) as the most important factor for poor outcome in terms of OS and RR, together with high serum levels of CA19-9 (> 37 IU/mL). Conversely, Kubota *et al*[28] in a large surgical series, found that the status of the surgical margin (positive *vs* negative) did not influence the OS, DFS or RR in types 1 and 2 IPNBs, indicating that this parameter does not affect the prognosis.

### Role of liver transplantation

Liver transplantation might be considered the only definitive and curative treatment in patients with extensive superficial spread along the bile duct mucosa, bilobar disease or with positive surgical margins, even after multiple resections. However, only limited experience has been described in the literature so far[55-58].

### Other therapeutic approaches

In nonsurgically fit patients, some palliative treatments, such as percutaneous transhepatic biliary drainage, biliary stenting and endoscopic approaches (including cholangioscopic electrocoagulation, submucosal resection, argon plasma coagulation, radiofrequency ablation, and transpapillary intraluminal radiotherapy), have been reported[24,59-61].

Among the endoscopic treatments described, the IPNB lesion can be resected *via* electrocoagulation using a high-frequency electric needle knife that directly targets and destroys the tumor tissue[61], through either the classical method of submucosal resection by using polypectomy snares[23], the argon plasma coagulation method that dehydrates the tissue by blocking the blood flow into the lesion and dries the surrounding area[59,62,63], or the radiofrequency ablation method that induces coagulative necrosis of the neoplastic tissue[24]. In particular, the advantage of electrocoagulation relies on its concomitant utilization with cholangioscopy[61], with the ability to reach intrahepatic lesions, which is different from the other techniques that are used by classical endoscopy. Alternatively, transpapillary intraluminal radiotherapy with a high dose of iridium-192 can be delivered directly into the lesion by using an ultrathin flexible probe. Response to treatment can be easily monitored through conventional imaging, and sessions can be repeated according to treatment response[60].

## PROGNOSIS AND SURVIVAL

Few reports exist in the literature investigating the natural evolution of untreated IPNBs. In the series of 196 patients with IPNBs by Han *et al*[40], only 16 (9 I-IPNB and 7 E-IPNB) did not undergo surgery and were observed during a median period of ~3 years. Of those with intrahepatic lesions, 55.5% experienced a malignant transformation *versus* 28.5% of those



belonging to the other group. In addition, 33.3% were admitted due to cholangitis *versus* 57.0% of the patients with E-IPNB. The remaining patients did not develop either malignancy or any type of symptoms related to their IPNBs.

Although survival data have varied widely among different series, the studies generally agree on the concept of a significantly improved OS and DFS for surgically resected IPNBs compared to conventional CCAs, with associated decreased rates of lymph node and distant metastases[2,22,36,37,39]. Several factors have been reported to be significant predictors of outcome after surgical resection of IPNBs, although most of them have not been well established or are still considered controversial[27,28,39,44,52].

For example, Rocha *et al*[7] reported depth of invasion ( $\geq 5$  mm,  $< 5$  mm, or none) and percentage of invasive carcinoma components ( $\geq 10\%$ ,  $< 10\%$ , or none) as the main significant prognostic factors, with patient OS inversely proportional to the grade of invasion and to the proportion of malignancy detected in the IPNB. Similarly, Onoe *et al*[64] investigated 184 patients with PCCs and documented the presence of  $> 50\%$  invasive components, defined as PCC-4, as an independent predictor of survival that approached the 5-year OS of patients with non-PCCs. The authors concluded that, although IPNBs might be nosologically applied only for PCC cases with  $< 50\%$  invasive component, their prognostic classification of PCCs according to the proportion of invasive components indicated that all subgroups belonged to a singular disease group[64].

The classification of IPNBs into types 1 and 2, according to their clinical and histopathological features, has been generally recognized as a significant predictor of survival[27,28,52], independent from the grade of dysplasia and/or presence of invasive carcinoma. The 1-, 3-, 5- and 10-year OS rates for type 1 IPNB were 96.1%, 85.2%, 75.2% and 58.5%, respectively, and for type 2 IPNB were 94.6%, 69.1%, 50.9% and 26.8%, respectively ( $P < 0.0001$ ). The 1-, 3-, 5- and 10-year DFS rates for type 1 were 88.3%, 73.8%, 64.1%, and 52.2%, respectively, and for type 2 IPNB were 81.0%, 48.0%, 35.3% and 25.8%, respectively ( $P < 0.0001$ )[28].

For all these features, type 1 IPNB might be considered the real biliary counterpart of IPMN-Ps, while PCCs might be included in the subgroup of type 2 IPNB, as stated above[2,46]. Likewise, Matsumoto *et al*[38] identified I-IPNB as those with more regular histopathological characteristics and favorable prognosis similar to type 1 in comparison with E-IPNB that might resemble type 2. Another significant poor prognostic factor recognized in several studies was lymph node metastasis, which carried an increased risk of locoregional recurrence[27,28,44,52,53]. Controversial results in terms of prognosis and survival have emerged from the analysis of other distinctive features of IPNBs, such as macroscopic appearance, histological subtype, immunohistochemical phenotype, and level of CA19-9[27,28,39,52,53].

## IPNB GENETIC CHANGES AND TARGETED THERAPIES: THE NEW FRONTIERS

Recent genetic analyses of IPNBs have identified several mutations involving different oncogenes and oncosuppressor genes, such as *KRAS*, *BRAF*, *GNAS*, *RNF43*, *TP53*, *APC*, *CTNNB1*, *ZNRF3*, *CDKN2A* and *SMAD4*. The altered expression is strictly related to the different immunohistochemical patterns observed[65-68]. Accordingly, at least three main signaling pathways have been identified in the carcinogenesis of IPNBs: RAS-MAPK, controlled by the *KRAS* and *BRAF* oncogenes; WNT- $\beta$ -catenin, regulated by the oncogene *CTNNB1* and by two oncosuppressor genes, *APC* and *ZNRF43*; and GPCR-CAMP, activated by mutations of the oncogene *GNAS*[65-68].

In particular, since mutations affecting the *APC* and *CTNNB1* genes have been rarely detected in IPMN-Ps, the WNT- $\beta$ -catenin pathway appears to have a unique role in the molecular alterations underlying the neoplastic transformation of the biliary epithelium, acting in the early phases of carcinogenesis. Dysregulation of other signaling pathways, particularly the RAS-MAPK pathway, has been described in different neoplasms, such as colorectal, pancreatic and lung cancers[65-68]. In addition, *KRAS* and *GNAS* mutations were frequently identified in type 1 IPNB, often of the intestinal subtype, which share several clinicopathological features with IPMN-Ps, while mutations in the *APC* oncosuppressor gene and in the *CTNNB1* oncogene, that is, the WNT- $\beta$ -catenin pathway, were generally described in type 2, often associated with the PB subtype[65-68].

These genetic studies confirmed that IPNBs consist of at least two distinct entities, and that the type 1 and 2 subclassifications, recently introduced by the Japan Biliary Association and the Korean Association of Hepato-Biliary-Pancreatic Surgery, may reflect these genetic subcategorizations[65-68]. For all these reasons, recent research has focused its attention on these dysregulated signaling pathways, especially the WNT- $\beta$ -catenin pathway, identifying several target agents that are currently under evaluation in clinical trials and preclinical studies of application to solid and hematological neoplasms[69,70]. Recently, preliminary valuable results have emerged from the NCT02675946 and NCT03507998 clinical trials evaluating the efficacy and safety of the WNT pathway porcupine inhibitor CGX1321 in advanced gastrointestinal neoplasms, including CCAs. However, at the time of this writing, none of these targeted therapies have been adopted in the field of IPNB management[71].

## CONCLUSION

IPNBs are newly recognized preinvasive neoplasms of the bile duct with high malignant potential and a tendency to evolve to invasive CCAs. Although several classifications have been proposed over the past 10 years, the recently introduced subclassification of types 1 and 2 highlights the histopathological and clinical aspects of IPNBs, their natural evolution with a particular focus on prognosis, OS, DFS and similarities/discrepancies with IPMN-Ps. In relation to their complexity, advanced techniques used in a multimodal approach are needed for correct diagnosis and precise identification of their locations, extension and pathological extent.

Surgery with a radical intent represents the most appropriate treatment, although different methods, mainly consisting of endoscopic approaches, can be considered in nonsurgically fit patients. Genetic analysis of the specific mutations driving the stepwise progression of neoplastic biliary epithelium might represent an innovative research field in terms of targeted therapies, particularly those implicating the WNT- $\beta$ -catenin pathway.

## FOOTNOTES

**Author contributions:** Mocchegiani F and Vincenzi P wrote and revised the paper; Benedetti Cacciaguerra A and Rossi R performed the research; Conte G and Nicolini D analyzed the data; Vivarelli M revised the paper.

**Conflict-of-interest statement:** The authors declare having no conflicts of interest.

**Open-Access:** This article is an open-access article that was selected by an in-house editor and fully peer-reviewed by external reviewers. It is distributed in accordance with the Creative Commons Attribution NonCommercial (CC BY-NC 4.0) license, which permits others to distribute, remix, adapt, build upon this work non-commercially, and license their derivative works on different terms, provided the original work is properly cited and the use is non-commercial. See: <https://creativecommons.org/licenses/by-nc/4.0/>

**Country/Territory of origin:** Italy

**ORCID number:** Federico Mocchegiani 0000-0002-8833-5360; Paolo Vincenzi 0000-0002-5446-2556; Grazia Conte 0000-0002-3877-7355; Daniele Nicolini 0000-0002-5477-3346; Roberta Rossi 0000-0003-3643-6298; Andrea Benedetti Cacciaguerra 0000-0001-6886-8138; Marco Vivarelli 0000-0003-0500-9461.

**S-Editor:** Lin C

**L-Editor:** Kerr C

**P-Editor:** Yuan YY

## REFERENCES

- Chen TC, Nakanuma Y, Zen Y, Chen MF, Jan YY, Yeh TS, Chiu CT, Kuo TT, Kamiya J, Oda K, Hamaguchi M, Ohno Y, Hsieh LL, Nimura Y. Intraductal papillary neoplasia of the liver associated with hepatolithiasis. *Hepatology* 2001; **34**: 651-658 [PMID: 11584359 DOI: 10.1053/jhep.2001.28199]
- Nakanuma Y, Uesaka K, Kakuda Y, Sugino T, Kubota K, Furukawa T, Fukumura Y, Isayama H, Terada T. Intraductal Papillary Neoplasm of Bile Duct: Updated Clinicopathological Characteristics and Molecular and Genetic Alterations. *J Clin Med* 2020; **9** [PMID: 33317146 DOI: 10.3390/jcm9123991]
- Nakanuma Y, Kakuda Y, Uesaka K. Characterization of Intraductal Papillary Neoplasm of the Bile Duct with Respect to the Histopathologic Similarities to Pancreatic Intraductal Papillary Mucinous Neoplasm. *Gut Liver* 2019; **13**: 617-627 [PMID: 30982236 DOI: 10.5009/gnl18476]
- Gordon-Weeks AN, Jones K, Harriss E, Smith A, Silva M. Systematic Review and Meta-analysis of Current Experience in Treating IPNB: Clinical and Pathological Correlates. *Ann Surg* 2016; **263**: 656-663 [PMID: 26501712 DOI: 10.1097/SLA.0000000000001426]
- Mondal D, Silva MA, Soonawalla Z, Wang LM, Bungay HK. Intraductal papillary neoplasm of the bile duct (IPN-B): also a disease of western Caucasian patients. A literature review and case series. *Clin Radiol* 2016; **71**: e79-e87 [PMID: 26493757 DOI: 10.1016/j.crad.2015.09.004]
- Bosman FT, Carneiro F, Hruban RH, Theise ND. WHO classification of tumours of the digestive system. 4th ed. Geneva: World Health Organization, 2010
- Rocha FG, Lee H, Katabi N, DeMatteo RP, Fong Y, D'Angelica MI, Allen PJ, Klimstra DS, Jarnagin WR. Intraductal papillary neoplasm of the bile duct: a biliary equivalent to intraductal papillary mucinous neoplasm of the pancreas? *Hepatology* 2012; **56**: 1352-1360 [PMID: 22504729 DOI: 10.1002/hep.25786]
- Zaccari P, Cardinale V, Severi C, Pedica F, Carpino G, Gaudio E, Doglioni C, Petrone MC, Alvaro D, Arcidiacono PG, Capurso G. Common features between neoplastic and preneoplastic lesions of the biliary tract and the pancreas. *World J Gastroenterol* 2019; **25**: 4343-4359 [PMID: 31496617 DOI: 10.3748/wjg.v25.i31.4343]
- Joo YH, Kim MH, Lee SK, Seo DW, Yoo KS, Min YI, Chang JJ, Yu E. A case of mucin-hypersecreting intrahepatic bile duct tumor associated with pancreatic intraductal papillary mucinous tumor. *Gastrointest Endosc* 2000; **52**: 409-412 [PMID: 10968862 DOI: 10.1067/mge.2000.108294]
- Ishida M, Seki K, Honda K, Kimura T, Katayama K, Hirose K, Dojo M, Azuma T, Imamura Y, Hutchins RR, Yamaguchi A. Intraductal mucinous tumors occurring simultaneously in the liver and pancreas. *J Gastroenterol* 2002; **37**: 1073-1078 [PMID: 12522542 DOI: 10.1007/s005350200181]
- Yamaguchi Y, Abe N, Imase K, Mizuno H, Chinen K, Mori H, Sugiyama M, Atomi Y, Ishida H, Takahashi S. A case of mucin hypersecreting intraductal papillary carcinomas occurring simultaneously in liver and pancreas. *Gastrointest Endosc* 2005; **61**: 330-334 [PMID: 15729259 DOI: 10.1016/s0016-5107(04)02635-5]
- Zalinski S, Paradis V, Valla D, Belghiti J. Intraductal papillary mucinous tumors of both biliary and pancreatic ducts. *J Hepatol* 2007; **46**: 978-979 [PMID: 17391800 DOI: 10.1016/j.jhep.2007.02.005]
- Park BH, Suh JH, Cha HJ, Kim YM, Choi HJ. Intraductal Papillary Mucinous Tumor Simultaneously Involving the Liver and Pancreas: A Case Report. *Korean J Pathol* 2010; **44**: 83-86 [DOI: 10.4132/KoreanJPathol.2010.44.1.83]
- Xu XW, Li RH, Zhou W, Wang J, Zhang RC, Chen K, Mou YP. Laparoscopic resection of synchronous intraductal papillary mucinous neoplasms: a case report. *World J Gastroenterol* 2012; **18**: 6510-6514 [PMID: 23197900 DOI: 10.3748/wjg.v18.i44.6510]
- Valente R, Capurso G, Pierantognetti P, Iannicelli E, Piciocchi M, Romiti A, Mercantini P, Larghi A, Federici GF, Barucca V, Osti MF, Di

- Giulio E, Ziparo V, Delle Fave G. Simultaneous intraductal papillary neoplasms of the bile duct and pancreas treated with chemoradiotherapy. *World J Gastrointest Oncol* 2012; **4**: 22-25 [PMID: [22403738](#) DOI: [10.4251/wjgo.v4.i2.22](#)]
- 16 Ren X, Zhu CL, Qin XF, Jiang H, Xia T, Qu YP. Co-occurrence of IPMN and malignant IPNB complicated by a pancreatobiliary fistula: A case report and review of the literature. *World J Clin Cases* 2019; **7**: 102-108 [PMID: [30637259](#) DOI: [10.12998/wjcc.v7.i1.102](#)]
  - 17 Luvira V, Pugkhem A, Tipwaratorn T, Chamgramol Y, Pairojkul C, Bhudhisawasdi V. Simultaneous Extensive Intraductal Papillary Neoplasm of the Bile Duct and Pancreas: A Very Rare Entity. *Case Rep Surg* 2016; **2016**: 1518707 [PMID: [26925284](#) DOI: [10.1155/2016/1518707](#)]
  - 18 Moon DB, Lee SG, Jung DH, Park GC, Park YH, Park HW, Kim MH, Lee SK, Yu ES, Kim JH. Synchronous malignant intraductal papillary mucinous neoplasms of the bile duct and pancreas requiring left hepatectomy and total pancreatectomy. *Korean J Gastroenterol* 2014; **63**: 129-133 [PMID: [24561701](#) DOI: [10.4166/kjg.2014.63.2.129](#)]
  - 19 Tarantino I, Mocciano F, Barresi L, Vitulo P, Liotta R, Curcio G, Granata A, Pisa MD, Traina M. Synchronous extrapancreatic malignant papillary mucinous neoplasms in a patient with intraductal papillary mucinous neoplasm of the pancreas: a rare case of simultaneous pancreatic, hepatic, and pulmonary involvement. *Pancreas* 2012; **41**: 501-502 [PMID: [22415674](#) DOI: [10.1097/MPA.0b013e3182320bf7](#)]
  - 20 Lee S, Kim MJ, Kim S, Choi D, Jang KT, Park YN. Intraductal papillary neoplasm of the bile duct: Assessment of invasive carcinoma and long-term outcomes using MRI. *J Hepatol* 2019; **70**: 692-699 [PMID: [30553839](#) DOI: [10.1016/j.jhep.2018.12.005](#)]
  - 21 Sakai Y, Ohtsuka M, Sugiyama H, Mikata R, Yasui S, Ohno I, Iino Y, Kato J, Tsuyuguchi T, Kato N. Current status of diagnosis and therapy for intraductal papillary neoplasm of the bile duct. *World J Gastroenterol* 2021; **27**: 1569-1577 [PMID: [33958844](#) DOI: [10.3748/wjg.v27.i15.1569](#)]
  - 22 Wu X, Li B, Zheng C. Clinicopathologic characteristics and long-term prognosis of intraductal papillary neoplasm of the bile duct: a retrospective study. *Eur J Med Res* 2023; **28**: 132 [PMID: [36945047](#) DOI: [10.1186/s40001-023-01102-w](#)]
  - 23 Yaghnani I, Syed N, Peng J, Moyer M. Endoscopic treatment of a large intraductal papillary mucinous neoplasm of the bile duct: tips and tricks learned during multiple treatments of a difficult case. *VideoGIE* 2023; **8**: 141-143 [PMID: [37095840](#) DOI: [10.1016/j.vgie.2022.12.005](#)]
  - 24 Natov NS, Horton LC, Hegde SR. Successful endoscopic treatment of an intraductal papillary neoplasm of the bile duct. *World J Gastrointest Endosc* 2017; **9**: 238-242 [PMID: [28572878](#) DOI: [10.4253/wjge.v9.i5.238](#)]
  - 25 Lendvai G, Szekerczés T, Illyés I, Dóra R, Kontsek E, Gógl A, Kiss A, Werling K, Kovalszky I, Schaff Z, Borka K. Cholangiocarcinoma: Classification, Histopathology and Molecular Carcinogenesis. *Pathol Oncol Res* 2020; **26**: 3-15 [PMID: [30448973](#) DOI: [10.1007/s12253-018-0491-8](#)]
  - 26 Geramizadeh B. Precursor Lesions of Cholangiocarcinoma: A Clinicopathologic Review. *Clin Pathol* 2020; **13**: 2632010X20925045 [PMID: [32596664](#) DOI: [10.1177/2632010X20925045](#)]
  - 27 Aoki Y, Mizuma M, Hata T, Aoki T, Omori Y, Ono Y, Mizukami Y, Unno M, Furukawa T. Intraductal papillary neoplasms of the bile duct consist of two distinct types specifically associated with clinicopathological features and molecular phenotypes. *J Pathol* 2020; **251**: 38-48 [PMID: [32100878](#) DOI: [10.1002/path.5398](#)]
  - 28 Kubota K, Jang JY, Nakanuma Y, Jang KT, Haruyama Y, Fukushima N, Furukawa T, Hong SM, Sakuraoka Y, Kim H, Matsumoto T, Lee KB, Zen Y, Kim J, Miyazaki M, Choi DW, Heo JS, Endo I, Hwang S, Nakamura M, Han HS, Uemoto S, Park SJ, Hong EK, Nanashima A, Kim DS, Kim JY, Ohta T, Kang KJ, Fukumoto T, Nah YW, Seo HI, Inui K, Yoon DS, Unno M. Clinicopathological characteristics of intraductal papillary neoplasm of the bile duct: a Japan-Korea collaborative study. *J Hepatobiliary Pancreat Sci* 2020; **27**: 581-597 [PMID: [32511838](#) DOI: [10.1002/jhbp.785](#)]
  - 29 Youn JM, Hwang S, Ahn CS, Moon DB, Ha TY, Song GW, Jung DH, Hong SM. Clinicopathological Features and Long-Term Outcomes of Intraductal Papillary Neoplasms of the Bile Duct of the Liver: Single-Institution Experience with 146 Patients. *J Gastrointest Surg* 2022; **26**: 1394-1405 [PMID: [35141839](#) DOI: [10.1007/s11605-022-05268-2](#)]
  - 30 Onoe S, Ebata T, Yokoyama Y, Igami T, Mizuno T, Yamaguchi J, Watanabe N, Otsuka S, Nakamura S, Shimoyama Y, Nagino M. A clinicopathological reappraisal of intraductal papillary neoplasm of the bile duct (IPNB): a continuous spectrum with papillary cholangiocarcinoma in 181 curatively resected cases. *HPB (Oxford)* 2021; **23**: 1525-1532 [PMID: [33832834](#) DOI: [10.1016/j.hpb.2021.03.004](#)]
  - 31 Xu J, Sato Y, Harada K, Yoneda N, Ueda T, Kawashima A, Nakanuma Y. Intraductal papillary neoplasm of the bile duct in liver cirrhosis with hepatocellular carcinoma. *World J Gastroenterol* 2011; **17**: 1923-1926 [PMID: [21528069](#) DOI: [10.3748/wjg.v17.i14.1923](#)]
  - 32 Hachiya H, Kita J, Shiraki T, Iso Y, Shimoda M, Kubota K. Intraductal papillary neoplasm of the bile duct developing in a patient with primary sclerosing cholangitis: a case report. *World J Gastroenterol* 2014; **20**: 15925-15930 [PMID: [25400480](#) DOI: [10.3748/wjg.v20.i42.15925](#)]
  - 33 Onishi I, Kitagawa H, Harada K, Maruzen S, Sakai S, Makino I, Hayashi H, Nakagawara H, Tajima H, Takamura H, Tani T, Kayahara M, Ikeda H, Ohta T, Nakanuma Y. Intraductal papillary neoplasm of the bile duct accompanying biliary mixed adenoneuroendocrine carcinoma. *World J Gastroenterol* 2013; **19**: 3161-3164 [PMID: [23716999](#) DOI: [10.3748/wjg.v19.i20.3161](#)]
  - 34 Apostolopoulos P, Ekmektzoglou KA, Paraskeva K, Dimopoulos K, Paparaskeva K, Alexandrakis G. Intraductal papillary neoplasm of the bile duct: case report and review of the literature. *Acta Gastroenterol Belg* 2018; **81**: 97-99 [PMID: [29562383](#)]
  - 35 Le A, Mathew A, Khrais A, Khmel'nitsky I, Vossough S. Intraductal Papillary Neoplasm of the Bile Duct: A Rare Disease and Presentation. *Cureus* 2023; **15**: e34556 [PMID: [36879718](#) DOI: [10.7759/cureus.34556](#)]
  - 36 Schlitter AM, Born D, Bettstetter M, Specht K, Kim-Fuchs C, Riener MO, Jeliakova P, Sipos B, Siveke JT, Terris B, Zen Y, Schuster T, Höfler H, Perren A, Klöppel G, Esposito I. Intraductal papillary neoplasms of the bile duct: stepwise progression to carcinoma involves common molecular pathways. *Mod Pathol* 2014; **27**: 73-86 [PMID: [23828315](#) DOI: [10.1038/modpathol.2013.112](#)]
  - 37 Krawczyk M, Ziarkiewicz-Wróblewska B, Podgórska J, Grzybowski J, Gierej B, Krawczyk P, Grąt M, Kornasiewicz O, Skalski M, Wróblewski T. Intraductal papillary neoplasm of the bile duct - A comprehensive review. *Adv Med Sci* 2021; **66**: 138-147 [PMID: [33556909](#) DOI: [10.1016/j.advms.2021.01.005](#)]
  - 38 Matsumoto T, Kubota K, Hachiya H, Sakuraoka Y, Shiraki T, Shimizu T, Mori S, Iso Y, Kato M, Yamagishi H, Imai Y, Aoki T. Impact of Tumor Location on Postoperative Outcome of Intraductal Papillary Neoplasm of the Bile Duct. *World J Surg* 2019; **43**: 1313-1322 [PMID: [30659344](#) DOI: [10.1007/s00268-019-04913-3](#)]
  - 39 Harada F, Matsuyama R, Mori R, Kumamoto T, Morioka D, Taguri M, Yamanaka S, Endo I. Outcomes of surgery for 2010 WHO classification-based intraductal papillary neoplasm of the bile duct: Case-control study of a single Japanese institution's experience with special attention to mucin expression patterns. *Eur J Surg Oncol* 2019; **45**: 761-768 [PMID: [30389302](#) DOI: [10.1016/j.ejso.2018.10.532](#)]
  - 40 Han SY, Kim DU, Nam HS, Kang DH, Jang SI, Lee DK, Shin DW, Cho KB, Yang MJ, Hwang JC, Kim JH, So H, Bang SJ, Sung MJ, Kwon CI, Lee DW, Cho CM, Cho JH. Comparison of the Malignant Predictors in Intrahepatic and Extrahepatic Intraductal Papillary Neoplasm of the



- Bile Duct. *J Clin Med* 2022; **11** [PMID: 35407592 DOI: 10.3390/jcm11071985]
- 41 **Nakanuma Y**, Sugino T, Kakuda Y, Okamura Y, Uesaka K, Nomura Y, Watanabe H, Terada T, Fukumura Y, Ohnishi Y, Sato Y. Pathologic patterns of invasive carcinoma associated with intraductal papillary neoplasms of bile duct (IPNB). *Ann Diagn Pathol* 2022; **61**: 152055 [PMID: 36279801 DOI: 10.1016/j.anndiagpath.2022.152055]
  - 42 **Park HJ**, Kim SY, Kim HJ, Lee SS, Hong GS, Byun JH, Hong SM, Lee MG. Intraductal Papillary Neoplasm of the Bile Duct: Clinical, Imaging, and Pathologic Features. *AJR Am J Roentgenol* 2018; **211**: 67-75 [PMID: 29629808 DOI: 10.2214/AJR.17.19261]
  - 43 **Sakamoto E**, Nimura Y, Hayakawa N, Kamiya J, Kondo S, Nagino M, Kanai M, Miyachi M. Clinicopathological studies of mucin-producing cholangiocarcinoma. *J Hepatobiliary Pancreat Sci* 1997; **4**: 157-62 [DOI: 10.1007/BF02489781]
  - 44 **Kim JR**, Lee KB, Kwon W, Kim E, Kim SW, Jang JY. Comparison of the Clinicopathologic Characteristics of Intraductal Papillary Neoplasm of the Bile Duct according to Morphological and Anatomical Classifications. *J Korean Med Sci* 2018; **33**: e266 [PMID: 30310366 DOI: 10.3346/jkms.2018.33.e266]
  - 45 **Luvira V**, Somsap K, Pughkem A, Eurboonyanun Ch, Luvira V, Bhudhisawasdi V, Pairojkul Ch, Kamsa Ard S. Morphological Classification of Intraductal Papillary Neoplasm of the Bile Duct with Survival Correlation. *Asian Pac J Cancer Prev* 2017; **18**: 207-213 [PMID: 28240521 DOI: 10.22034/APJCP.2017.18.1.207]
  - 46 **Zen Y**, Akita M. Neoplastic Progression in Intraductal Papillary Neoplasm of the Bile Duct. *Arch Pathol Lab Med* 2023 [PMID: 36800543 DOI: 10.5858/arpa.2022-0407-RA]
  - 47 **Bosman FT**, Carneiro F, Hruban RH, Theise ND. Digestive System Tumours, WHO Classification of Tumours. 5th ed. Geneva: World Health, 2019
  - 48 **Goeppert B**, Stichel D, Toth R, Fritzsche S, Loeffler MA, Schlitter AM, Neumann O, Assenov Y, Vogel MN, Mehrabi A, Hoffmann K, Köhler B, Springfield C, Weichenhan D, Plass C, Esposito I, Schirmacher P, von Deimling A, Roessler S. Integrative analysis reveals early and distinct genetic and epigenetic changes in intraductal papillary and tubulopapillary cholangiocarcinogenesis. *Gut* 2022; **71**: 391-401 [PMID: 33468537 DOI: 10.1136/gutjnl-2020-322983]
  - 49 **Yeh TS**, Tseng JH, Chiu CT, Liu NJ, Chen TC, Jan YY, Chen MF. Cholangiographic spectrum of intraductal papillary mucinous neoplasm of the bile ducts. *Ann Surg* 2006; **244**: 248-253 [PMID: 16858187 DOI: 10.1097/01.sla.0000217636.40050.54]
  - 50 **Tanaka M**, Fernández-Del Castillo C, Kamisawa T, Jang JY, Levy P, Ohtsuka T, Salvia R, Shimizu Y, Tada M, Wolfgang CL. Revisions of international consensus Fukuoka guidelines for the management of IPMN of the pancreas. *Pancreatology* 2017; **17**: 738-753 [PMID: 28735806 DOI: 10.1016/j.pan.2017.07.007]
  - 51 **European Study Group on Cystic Tumours of the Pancreas**. European evidence-based guidelines on pancreatic cystic neoplasms. *Gut* 2018; **67**: 789-804 [PMID: 29574408 DOI: 10.1136/gutjnl-2018-316027]
  - 52 **Uemura S**, Higuchi R, Yazawa T, Izumo W, Matsunaga Y, Shiihara M, Ota T, Furukawa T, Yamamoto M. Prognostic Factors for Surgically Resected Intraductal Papillary Neoplasm of the Bile Duct: A Retrospective Cohort Study. *Ann Surg Oncol* 2021; **28**: 826-834 [PMID: 32651697 DOI: 10.1245/s10434-020-08835-6]
  - 53 **Luvira V**, Pughkem A, Bhudhisawasdi V, Pairojkul C, Sathitkarnmanee E, Luvira V, Kamsa-Ard S. Long-term outcome of surgical resection for intraductal papillary neoplasm of the bile duct. *J Gastroenterol Hepatol* 2017; **32**: 527-533 [PMID: 27356284 DOI: 10.1111/jgh.13481]
  - 54 **Jung G**, Park KM, Lee SS, Yu E, Hong SM, Kim J. Long-term clinical outcome of the surgically resected intraductal papillary neoplasm of the bile duct. *J Hepatol* 2012; **57**: 787-793 [PMID: 22634127 DOI: 10.1016/j.jhep.2012.05.008]
  - 55 **Vibert E**, Dokmak S, Belghiti J. Surgical strategy of biliary papillomatosis in Western countries. *J Hepatobiliary Pancreat Sci* 2010; **17**: 241-245 [PMID: 19649560 DOI: 10.1007/s00534-009-0151-1]
  - 56 **Imvrios G**, Papanikolaou V, Lalountas M, Patsiaoura K, Giakoustidis D, Fouzas I, Anagnostara E, Antoniadis N, Takoudas D. Papillomatosis of intra- and extrahepatic biliary tree: Successful treatment with liver transplantation. *Liver Transpl* 2007; **13**: 1045-1048 [PMID: 17600352 DOI: 10.1002/Lt.21207]
  - 57 **Ferraro D**, Levi Sandri GB, Vennarecci G, Santoro R, Colasanti M, Meniconi RL, Lepiane P, Ettorre GM. Successful Orthotopic Liver Transplant for Diffuse Biliary Papillomatosis With Malignant Transformation: A Case Report With Long-Term Follow-Up. *Exp Clin Transplant* 2019; **17**: 835-837 [PMID: 29534660 DOI: 10.6002/ect.2017.0134]
  - 58 **Caso Maestro Ó**, Justo Alonso I, Rodríguez Gil Y, Marcacuzco Quinto A, Calvo Pulido J, Jiménez Romero C. Tumor recurrence after liver transplantation for diffuse biliary papillomatosis in the absence of invasive carcinoma. *Rev Esp Enferm Dig* 2018; **110**: 526-528 [PMID: 29938516 DOI: 10.17235/reed.2018.5557/2018]
  - 59 **Syed AR**, Kumar U, Garg M, Dhawan M, Thakkar S. Argon plasma coagulation treatment of intraductal papillary neoplasm of biliary tract: an alternative approach. *VideoGIE* 2018; **3**: 234-235 [PMID: 30128400 DOI: 10.1016/j.vgie.2018.03.006]
  - 60 **Lu XL**, Itoi T, Kubota K. Cholangioscopy by using narrow-band imaging and transpapillary radiotherapy for mucin-producing bile duct tumor. *Clin Gastroenterol Hepatol* 2009; **7**: e34-e35 [PMID: 19061973 DOI: 10.1016/j.cgh.2008.11.001]
  - 61 **Wu C**, Yang JF, Zhang Q, Liu W, Liao K, Hu B. Successful cholangioscopic electrocoagulation for biliary papillomatosis: Report covering six cases (with video). *Gastroenterol Hepatol* 2021; **44**: 546-551 [PMID: 33617929 DOI: 10.1016/j.gastrohep.2020.12.012]
  - 62 **Brauer BC**, Fukami N, Chen YK. Direct cholangioscopy with narrow-band imaging, chromoendoscopy, and argon plasma coagulation of intraductal papillary mucinous neoplasm of the bile duct (with videos). *Gastrointest Endosc* 2008; **67**: 574-576 [PMID: 18207145 DOI: 10.1016/j.gie.2007.07.031]
  - 63 **Cha B**, Park JS, Jeong S, Lee DH, Kim JM. Direct cholangioscopy with argon plasma coagulation of an intraductal papillary mucinous neoplasm of the bile duct. *Korean J Intern Med* 2019; **34**: 940-941 [PMID: 29761795 DOI: 10.3904/kjim.2017.301]
  - 64 **Onoe S**, Shimoyama Y, Ebata T, Yokoyama Y, Igami T, Sugawara G, Nakamura S, Nagino M. Prognostic delineation of papillary cholangiocarcinoma based on the invasive proportion: a single-institution study with 184 patients. *Surgery* 2014; **155**: 280-291 [PMID: 24287144 DOI: 10.1016/j.surg.2013.08.011]
  - 65 **Yang CY**, Huang WJ, Tsai JH, Cheng A, Chen CC, Hsu HP, Jeng YM. Targeted next-generation sequencing identifies distinct clinicopathologic and molecular entities of intraductal papillary neoplasms of the bile duct. *Mod Pathol* 2019; **32**: 1637-1645 [PMID: 31231124 DOI: 10.1038/s41379-019-0306-9]
  - 66 **Xian ZH**, Qin C, Cong WM. KRAS mutation and immunohistochemical profile in intraductal papillary neoplasm of the intrahepatic bile ducts. *Pathol Res Pract* 2018; **214**: 105-111 [PMID: 29103773 DOI: 10.1016/j.prp.2017.10.017]
  - 67 **Fujikura K**, Akita M, Ajiki T, Fukumoto T, Itoh T, Zen Y. Recurrent Mutations in APC and CTNNB1 and Activated Wnt/β-catenin Signaling in Intraductal Papillary Neoplasms of the Bile Duct: A Whole Exome Sequencing Study. *Am J Surg Pathol* 2018; **42**: 1674-1685 [PMID: 30128400 DOI: 10.1016/j.vgie.2018.03.006]

30212390 DOI: [10.1097/PAS.0000000000001155](https://doi.org/10.1097/PAS.0000000000001155)]

- 68 **Tsai JH**, Liao JY, Yuan CT, Cheng ML, Yuan RH, Jeng YM. RNF43 mutation frequently occurs with GNAS mutation and mucin hypersecretion in intraductal papillary neoplasms of the bile duct. *Histopathology* 2017; **70**: 756-765 [PMID: [27864998](https://pubmed.ncbi.nlm.nih.gov/27864998/) DOI: [10.1111/his.13125](https://doi.org/10.1111/his.13125)]
- 69 **Zhang Y**, Wang X. Targeting the Wnt/ $\beta$ -catenin signaling pathway in cancer. *J Hematol Oncol* 2020; **13**: 165 [PMID: [33276800](https://pubmed.ncbi.nlm.nih.gov/33276800/) DOI: [10.1186/s13045-020-00990-3](https://doi.org/10.1186/s13045-020-00990-3)]
- 70 **Wang W**, Cho U, Yoo A, Jung CL, Kim B, Kim H, Lee J, Jo H, Han Y, Song MH, Lee JO, Kim SI, Lee M, Ku JL, Lee C, Song YS. Wnt/ $\beta$ -Catenin Inhibition by CWP232291 as a Novel Therapeutic Strategy in Ovarian Cancer. *Front Oncol* 2022; **12**: 852260 [PMID: [35646632](https://pubmed.ncbi.nlm.nih.gov/35646632/) DOI: [10.3389/fonc.2022.852260](https://doi.org/10.3389/fonc.2022.852260)]
- 71 **Giannakis M**, Le DT, Pishvaian MJ, Weinberg BA, Papadopoulos KP, Shen L, Gong J, Li J, Strickler JH, Zhou A, Zhang W, Parikh AR, Deming DA, Falchook GS, Cai J, Rosenstein L, Dorr A, An MM. Phase 1 study of WNT pathway Porcupine inhibitor CGX1321 and phase 1b study of CGX1321 + pembrolizumab (pembro) in patients (pts) with advanced gastrointestinal (GI) tumors. *J Clin Oncol* 2023; **41**: 3514-3514 [DOI: [10.1200/JCO.2023.41.16\\_suppl.3514](https://doi.org/10.1200/JCO.2023.41.16_suppl.3514)]



Published by **Baishideng Publishing Group Inc**  
7041 Koll Center Parkway, Suite 160, Pleasanton, CA 94566, USA

**Telephone:** +1-925-3991568

**E-mail:** [bpgoffice@wjgnet.com](mailto:bpgoffice@wjgnet.com)

**Help Desk:** <https://www.f6publishing.com/helpdesk>

<https://www.wjgnet.com>

