

World Journal of *Gastroenterology*

World J Gastroenterol 2024 March 28; 30(12): 1644-1779



EDITORIAL

- 1644** Interaction between diet and genetics in patients with inflammatory bowel disease
Magro DO, Sassaki LY, Chebli JMF
- 1651** Pediatric stricturing Crohn's disease
Boscarella A, Bramuzzo M
- 1655** Gut microbiota and female health
Wang MY, Sang LX, Sun SY
- 1663** Multiparametric ultrasound as a new concept of assessment of liver tissue damage
Peltec A, Sporea I
- 1670** Advancements in medical treatment for pancreatic neuroendocrine tumors: A beacon of hope
Giri S, Sahoo J

OPINION REVIEW

- 1676** New direction for surgery: Super minimally invasive surgery
Linghu EQ

REVIEW

- 1680** Liquid biopsy for gastric cancer: Techniques, applications, and future directions
Díaz del Arco C, Fernández Aceñero MJ, Ortega Medina L

MINIREVIEWS

- 1706** Endoscopic treatment of scarred polyps with a non-thermal device (Endorotor): A review of the literature
Zaghloul M, Rehman H, Sansone S, Argyriou K, Parra-Blanco A

ORIGINAL ARTICLE**Retrospective Study**

- 1714** Predictive value of red blood cell distribution width and hematocrit for short-term outcomes and prognosis in colorectal cancer patients undergoing radical surgery
Peng D, Li ZW, Liu F, Liu XR, Wang CY
- 1727** Assessing recent recurrence after hepatectomy for hepatitis B-related hepatocellular carcinoma by a predictive model based on sarcopenia
Peng H, Lei SY, Fan W, Dai Y, Zhang Y, Chen G, Xiong TT, Liu TZ, Huang Y, Wang XF, Xu JH, Luo XH

- 1739 Treatment patterns and survival outcomes in patients with non-metastatic early-onset pancreatic cancer

Zhang LT, Zhang Y, Cao BY, Wu CC, Wang J

Clinical Trials Study

- 1751 Early proactive monitoring of DNA-thioguanine in patients with Crohn's disease predicts thiopurine-induced late leucopenia in NUDT15/TPMT normal metabolizers

Yang T, Chao K, Zhu X, Wang XD, Chan S, Guan YP, Mao J, Li P, Guan SX, Xie W, Gao X, Huang M

Basic Study

- 1764 ALKBH5 suppresses autophagic flux *via* N6-methyladenosine demethylation of ZKSCAN3 mRNA in acute pancreatitis

Zhang T, Zhu S, Huang GW

LETTER TO THE EDITOR

- 1777 Hepatic recompensation according to Baveno VII criteria *via* transjugular intrahepatic portosystemic shunt

Shaaban HE, Abdellatef A, Okasha HH

ABOUT COVER

Editorial Board Member of *World Journal of Gastroenterology*, Tamara Vorobjova, PhD, Academic Research, Associate Professor, Department of Immunology, Institute of Biomedicine and Translational Medicine, University of Tartu, Tartu 51014, Estonia. tamara.vorobjova@ut.ee

AIMS AND SCOPE

The primary aim of *World Journal of Gastroenterology* (WJG, *World J Gastroenterol*) is to provide scholars and readers from various fields of gastroenterology and hepatology with a platform to publish high-quality basic and clinical research articles and communicate their research findings online. WJG mainly publishes articles reporting research results and findings obtained in the field of gastroenterology and hepatology and covering a wide range of topics including gastroenterology, hepatology, gastrointestinal endoscopy, gastrointestinal surgery, gastrointestinal oncology, and pediatric gastroenterology.

INDEXING/ABSTRACTING

The WJG is now abstracted and indexed in Science Citation Index Expanded (SCIE), MEDLINE, PubMed, PubMed Central, Scopus, Reference Citation Analysis, China Science and Technology Journal Database, and Superstar Journals Database. The 2023 edition of Journal Citation Reports® cites the 2022 impact factor (IF) for WJG as 4.3; Quartile category: Q2. The WJG's CiteScore for 2021 is 8.3.

RESPONSIBLE EDITORS FOR THIS ISSUE

Production Editor: *Yu-Xi Chen*; Production Department Director: *Xiang Li*; Cover Editor: *Jia-Ru Fan*.

NAME OF JOURNAL

World Journal of Gastroenterology

ISSN

ISSN 1007-9327 (print) ISSN 2219-2840 (online)

LAUNCH DATE

October 1, 1995

FREQUENCY

Weekly

EDITORS-IN-CHIEF

Andrzej S Tarnawski

EXECUTIVE ASSOCIATE EDITORS-IN-CHIEF

Xian-Jun Yu (Pancreatic Oncology), Jian-Gao Fan (Chronic Liver Disease), Hou-Bao Liu (Biliary Tract Disease)

EDITORIAL BOARD MEMBERS

<http://www.wjgnet.com/1007-9327/editorialboard.htm>

PUBLICATION DATE

March 28, 2024

COPYRIGHT

© 2024 Baishideng Publishing Group Inc

PUBLISHING PARTNER

Shanghai Pancreatic Cancer Institute and Pancreatic Cancer Institute, Fudan University
Biliary Tract Disease Institute, Fudan University

INSTRUCTIONS TO AUTHORS

<https://www.wjgnet.com/bpg/gerinfo/204>

GUIDELINES FOR ETHICS DOCUMENTS

<https://www.wjgnet.com/bpg/GerInfo/287>

GUIDELINES FOR NON-NATIVE SPEAKERS OF ENGLISH

<https://www.wjgnet.com/bpg/gerinfo/240>

PUBLICATION ETHICS

<https://www.wjgnet.com/bpg/GerInfo/288>

PUBLICATION MISCONDUCT

<https://www.wjgnet.com/bpg/gerinfo/208>

POLICY OF CO-AUTHORS

<https://www.wjgnet.com/bpg/GerInfo/310>

ARTICLE PROCESSING CHARGE

<https://www.wjgnet.com/bpg/gerinfo/242>

STEPS FOR SUBMITTING MANUSCRIPTS

<https://www.wjgnet.com/bpg/GerInfo/239>

ONLINE SUBMISSION

<https://www.f6publishing.com>

PUBLISHING PARTNER's OFFICIAL WEBSITE

<https://www.shca.org.cn>
<https://www.zs-hospital.sh.cn>



Retrospective Study

Assessing recent recurrence after hepatectomy for hepatitis B-related hepatocellular carcinoma by a predictive model based on sarcopenia

Hong Peng, Si-Yi Lei, Wei Fan, Yu Dai, Yi Zhang, Gen Chen, Ting-Ting Xiong, Tian-Zhao Liu, Yue Huang, Xiao-Feng Wang, Jin-Hui Xu, Xin-Hua Luo

Specialty type: Gastroenterology and hepatology

Provenance and peer review:

Unsolicited article; Externally peer reviewed.

Peer-review model: Single blind

Peer-review report's scientific quality classification

Grade A (Excellent): 0
Grade B (Very good): B
Grade C (Good): 0
Grade D (Fair): 0
Grade E (Poor): 0

P-Reviewer: Virarkar M, United States

Received: November 27, 2023

Peer-review started: November 27, 2023

First decision: January 17, 2024

Revised: January 30, 2024

Accepted: March 13, 2024

Article in press: March 13, 2024

Published online: March 28, 2024



Hong Peng, Si-Yi Lei, Ting-Ting Xiong, Tian-Zhao Liu, Yue Huang, Xiao-Feng Wang, Jin-Hui Xu, Xin-Hua Luo, Department of Infectious Diseases, Guizhou Provincial People's Hospital, Guiyang 550002, Guizhou Province, China

Wei Fan, Yu Dai, Yi Zhang, Gen Chen, Department of Hepatobiliary Surgery, Guizhou Provincial People's Hospital, Guiyang 550002, Guizhou Province, China

Corresponding author: Xin-Hua Luo, PhD, Chief Doctor, Department of Infectious Diseases, Guizhou Provincial People's Hospital, No. 83 Zhongshan East Road, Nanming District, Guiyang 550002, Guizhou Province, China. luoxinhua1972@126.com

Abstract

BACKGROUND

Sarcopenia may be associated with hepatocellular carcinoma (HCC) following hepatectomy. But traditional single clinical variables are still insufficient to predict recurrence. We still lack effective prediction models for recent recurrence (time to recurrence < 2 years) after hepatectomy for HCC.

AIM

To establish an interventable prediction model to estimate recurrence-free survival (RFS) after hepatectomy for HCC based on sarcopenia.

METHODS

We retrospectively analyzed 283 hepatitis B-related HCC patients who underwent curative hepatectomy for the first time, and the skeletal muscle index at the third lumbar spine was measured by preoperative computed tomography. 94 of these patients were enrolled for external validation. Cox multivariate analysis was performed to identify the risk factors of postoperative recurrence in training cohort. A nomogram model was developed to predict the RFS of HCC patients, and its predictive performance was validated. The predictive efficacy of this model was evaluated using the receiver operating characteristic curve.

RESULTS

Multivariate analysis showed that sarcopenia [Hazard ratio(HR) = 1.767, 95%CI: 1.166-2.678, $P < 0.05$], alpha-fetoprotein ≥ 40 ng/mL (HR = 1.984, 95%CI: 1.307-

3.011, $P < 0.05$), the maximum diameter of tumor > 5 cm (HR = 2.222, 95%CI: 1.285-3.842, $P < 0.05$), and hepatitis B virus DNA level ≥ 2000 IU/mL (HR = 2.1, 95%CI: 1.407-3.135, $P < 0.05$) were independent risk factors associated with postoperative recurrence of HCC. Based on the sarcopenia to assess the RFS model of hepatectomy with hepatitis B-related liver cancer disease (SAMD) was established combined with other the above risk factors. The area under the curve of the SAMD model was 0.782 (95%CI: 0.705-0.858) in the training cohort (sensitivity 81%, specificity 63%) and 0.773 (95%CI: 0.707-0.838) in the validation cohort. Besides, a SAMD score ≥ 110 was better to distinguish the high-risk group of postoperative recurrence of HCC.

CONCLUSION

Sarcopenia is associated with recent recurrence after hepatectomy for hepatitis B-related HCC. A nutritional status-based prediction model is first established for postoperative recurrence of hepatitis B-related HCC, which is superior to other models and contributes to prognosis prediction.

Key Words: Alpha-fetoprotein; Hepatitis B virus; Hepatectomy; Hepatocellular carcinoma; Nomogram; Predictive models; Recurrence; Recurrence-free survival; Risk factors; Sarcopenia

©The Author(s) 2024. Published by Baishideng Publishing Group Inc. All rights reserved.

Core Tip: Our focus on the factors that can intervene or improve the adverse outcomes of postoperative recurrence in patients with hepatitis B-related hepatocellular carcinoma (HCC) and establish a more effective model for predicting recurrence. Our study found Sarcopenia is remarkably associated with recent recurrence after hepatectomy for hepatitis B-related HCC. The SAMD model based on sarcopenia established in this study emphasizes the assessment and monitor of sarcopenia in hepatitis B-related HCC patients and effectively assists clinicians in closely to identify and monitor high-risk populations to improve the recurrence outcome of hepatitis B-related HCC patients after surgery through multi angle intervention measures.

Citation: Peng H, Lei SY, Fan W, Dai Y, Zhang Y, Chen G, Xiong TT, Liu TZ, Huang Y, Wang XF, Xu JH, Luo XH. Assessing recent recurrence after hepatectomy for hepatitis B-related hepatocellular carcinoma by a predictive model based on sarcopenia. *World J Gastroenterol* 2024; 30(12): 1727-1738

URL: <https://www.wjgnet.com/1007-9327/full/v30/i12/1727.htm>

DOI: <https://dx.doi.org/10.3748/wjg.v30.i12.1727>

INTRODUCTION

Hepatocellular carcinoma (HCC) is one of the most common malignancies worldwide. For patients with early-stage HCC, hepatic resection, and liver transplantation offer the most reasonable expectation for curative treatment[1]. Unfortunately, the prognosis of HCC patients following curative resection remains dismal due to the high postoperative recurrence rate. It is reported that 40%-70% of HCC cases present with disease recurrence within 5 years[2,3]. Currently, there is no effective therapy to prevent the recurrence of HCC, which makes early identification and timely treatment of the high-risk populations for HCC recurrence crucial to improving the prognosis of HCC.

Recurrence after hepatectomy for HCC is associated with many factors. Several prognostic scoring systems and models, such as assessment for surveillance interval score (AS score)[4], early recurrence after surgery for liver tumor (ERASL-pre), and model of recurrence after liver transplant (pre-MORAL)[5,6], have been developed to predict the risk of HCC recurrence preoperatively. However, it is difficult to guide clinically targeted interventions to factors related to the tumor. Nutritional status is crucial in determining the prognosis of HCC patients. Objective nutritional assessment and timely nutritional intervention may improve patient prognosis. Sarcopenia is a representative indicator of nutrition, associated with morbidity and mortality in various pathology, including colorectal, gastric, and liver[7,8]. Studies have also found that sarcopenia is a risk factor for the recurrence of HCC after curative treatment[9,10]. It's worth noting that measuring the skeletal muscle index (SMI) of the third lumbar spine (L3) by abdominal computed tomography (CT) is the most objective method for assessing sarcopenia in liver disease[11]. This study aims to establish a comprehensive prediction model for HCC recurrence based on sarcopenia to improve the prediction of early recurrence risk in HCC patients undergoing hepatectomy, which can provide a reference for the formulation of comprehensive treatment plans for patients.

MATERIALS AND METHODS

Study population

All patients who underwent primary hepatectomy for HCC at the Guizhou Provincial People's Hospital between January 2017 and September 2021 were retrospectively collected. The inclusion criteria included: (1) First hepatectomy for HCC;

(2) no extrahepatic metastasis; (3) above 18 years old; and (4) history of chronic hepatitis B with positive hepatitis B surface antigen. The exclusion criteria included: (1) Data incomplete; (2) history of hepatectomy for liver malignancies; (3) history of transcatheter arterial chemoembolization for HCC; (4) history of chemotherapy for HCC; (5) particular subtypes of HCC confirmed by resected specimens (such as intrahepatic cholangiocarcinoma and combined hepatocellular-cholangiocarcinoma); and (6) patients complicated with other malignant tumors. Detailed patient information is shown in [Figure 1](#). Specifically, 189 patients in the training cohort were hospitalized at the second ward of hepatobiliary surgery; Moreover, 94 patients hospitalized in the third ward of hepatobiliary surgery at the Guizhou Provincial People's Hospital were enrolled for external validation.

Clinical data

The demographic data and laboratory parameters of all patients were extracted by reviewing the medical records. All biochemical and pathological indicators were determined in our laboratory. The laboratory parameters included alpha-fetoprotein (AFP), alanine-aminotransferase (ALT), total bilirubin, albumin (ALB), international normalized ratio (INR), leukocyte, platelet count (PLT), serum Hepatitis B virus deoxyribonucleic acid (HBV DNA). The pathological characteristics of HCC including the degree of differentiation, liver capsular invasion, and microvascular invasion (MVI) were recorded. The maximum tumor diameter and the third lumbar-skeletal muscle area (SMA) were measured by CT before hepatectomy. Sarcopenia was assessed by the L3-SMI. Existing prediction models: AS score = $0.176 \times \text{age (year)} + 17.279 \times \text{INR} - 21.887$ [\[4\]](#); ERASL-pre score = $0.818 \times \text{Gender (0: Female, 1: Male)} + 0.447 \times \text{Albumin-Bilirubin (ALBI) grade (0: Grade 1; 1: Grade 2 or 3)} + 0.100 \times \ln(\text{Serum AFP in } \mu\text{g/L}) + 0.580 \times \ln(\text{Tumor size in cm}) + 0.492 \times \text{Tumor number (0: Single; 1: Two or three; 2: Four or more)}$ [\[5\]](#); pre-MORAL score = tumor size > 3 cm (Score: 3) + AFP ≥ 200 ng/mL (Score: 4) + and the neutrophil-lymphocyte ratio > 5 (Score: 6)[\[6\]](#); Cut-offs to generate the risk groups: AS score ≥ 9.26 , ERASL-pre score > 3.521 (high), ERASL-pre score > 3.521 (high), and pre-MORAL score > 7 (high). Use these models to rate in our dataset.

Surgery and definition

In our institute, the selection of patients with HCC for hepatectomy was based on considering tumor factor, liver functional status, and patient factor. A curative resection was defined as a complete resection of all macroscopically evident tumors. The absence of tumor cells along the parenchymal transection line was confirmed histologically. No tumors remained on CT or serological features in the remnant liver at 2 months after the operation. HCC recurrence was defined as the recurrence of HCC after radical treatment of HCC. Recent recurrence [time to recurrence (TTR) < 2 years] and forward recurrence (TTR ≥ 2 years) by TTR[\[12\]](#). All recurrent tumors were new lesions diagnosed by radiological features typical of HCC in the CT scans[\[13\]](#).

Using CT images, SMA and SMI at the L3 vertebra could be calculated and analyzed to evaluate skeletal muscle mass. Data at CT were obtained at baseline. L3-SMI was calculated using the following formula: L3-SMI = L3 SMA (cm²)/the square of the patient's height (m²). The diagnostic criteria of sarcopenia were determined based on the Japan Society of Hepatology *Guidelines for Sarcopenia in Liver Disease*[\[14\]](#). L3-SMI of female and male patients were < 38 cm²/m² and < 42 cm²/m², respectively.

Assessment of recurrence

The follow-up imaging results of patients after HCC resection were reviewed every 3-6 months. Tumor recurrence was defined as new lesions in the liver detected by liver ultrasound, CT, or magnetic resonance imaging, with elevated serum AFP.

Ethics statement

The present study was approved by the Ethics Committee of Guizhou Provincial People's Hospital and performed according to the ethical guidelines of the 1975 Declaration of Helsinki. The requirement for informed consent was waived due to the retrospective nature of the study and the anonymity of the data.

Statistical analysis

Categorical variables were presented in number and percentage (%), and variables were compared using the chi-square test. Continuous variables are presented as mean \pm standard deviation or median (interquartile range). Quantitative variables in normal distribution were compared by student's *t*-test or Mann-Whitney nonparametric U test. recurrence-free survival (RFS) was calculated by the Kaplan-Meier method, and RFS curves were compared using the log-rank test. The cox regression model performed univariate and multivariate analyses with a stepwise selection of variables. The time-dependent area under the receiver operating characteristic curve (ROC). Based on the selected independent predictors, nomograms were constructed, and assessment calibration curves were plotted to assess the calibration of the model. Statistical analysis was performed using IBM SPSS 23.0 software (IBM, Armonk, NY, United States), GraphPad Prism 6.0 software (GraphPad Software, La Jolla, CA, United States), and the R statistical programming version 3.3.1 (Vienna, Austria, <http://www.r-project.org>). A value of *P* < 0.05 was considered statistically significant.

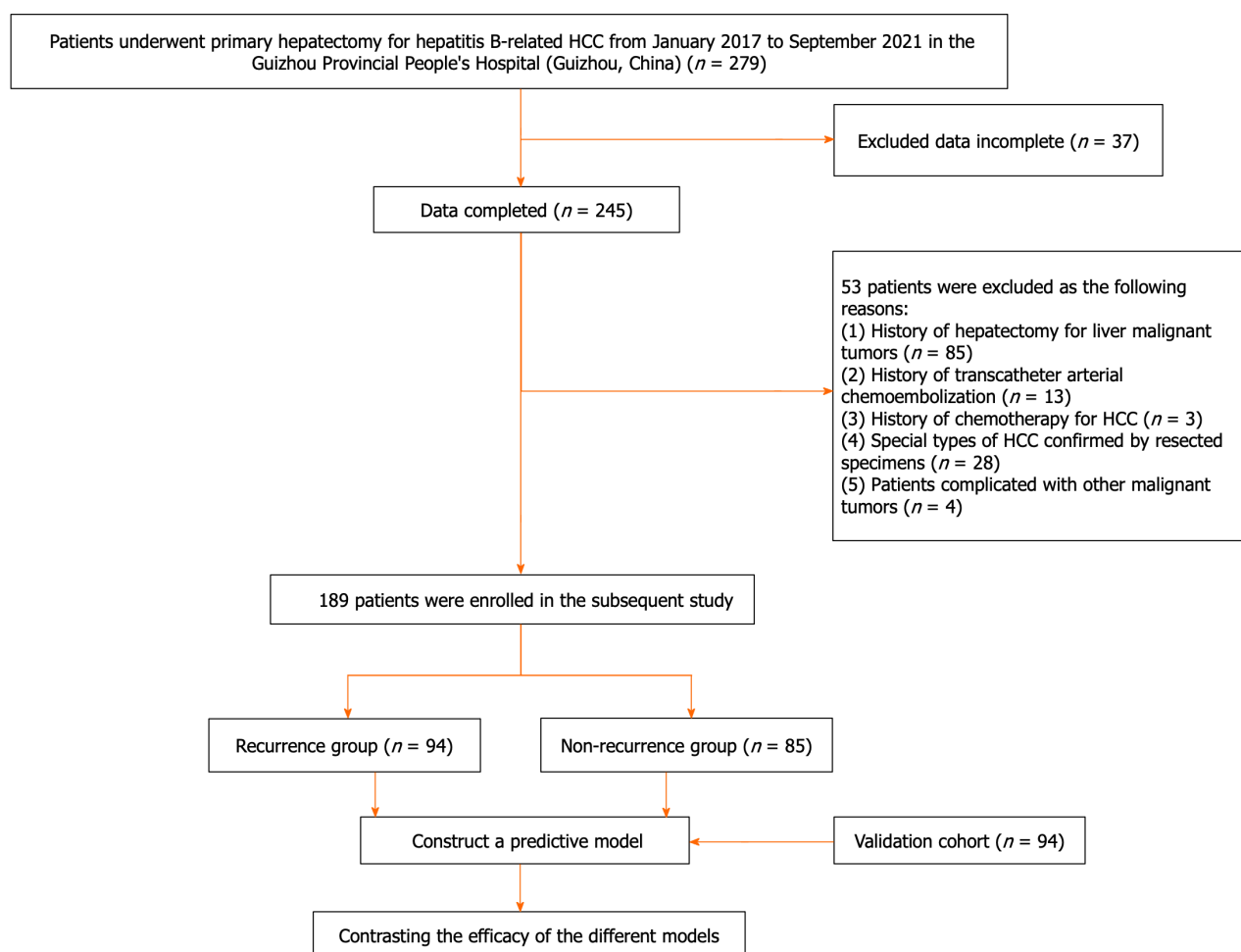


Figure 1 Flowchart of patients. HCC: Hepatocellular carcinoma.

RESULTS

Characteristics of patients

A total of 283 patients were recruited into the training and validation cohorts, including 241 men (85.2%) and 42 women (14.8%), with a mean age of 52.71 ± 11.15 years. The follow-up results showed that 144 (50.9%) patients developed recurrence within 2 years after hepatectomy, and the median RFS was 7.67 months (95%CI: 6.59-8.75). The baseline characteristics of the training and validation cohorts are presented in Table 1. All baseline characteristics were comparable between the two cohorts ($P > 0.05$). Among the 189 patients enrolled in the training cohort, 104 (55%) patients experienced HCC recurrence with the median RFS of 6 months (95%CI: 7.18-11.05), and the remaining 85 (45%) patients were assigned to the non-recurrence group. Further, as shown in Table 2, the recurrence rate was higher in patients with preoperative sarcopenia (66.7% *vs* 50.3%, $P < 0.05$) and HBV-DNA ≥ 2000 IU/mL (71% *vs* 47.2%, $P < 0.05$). There were significant differences in tumor differentiation, MVI and the maximum diameter of tumor between the recurrence group and the non-recurrence group (all $P < 0.05$). There was no significant difference in age, gender, liver capsular invasion, liver cirrhosis, ALT, albumin, total bilirubin, leukocyte, INR, PLT between the recurrence group and the non-recurrence group ($P > 0.05$).

Risk factors for HCC recurrence after hepatectomy

Univariate analysis showed that preoperative sarcopenia, tumor differentiation, the maximum diameter of tumor, HBV-DNA level, and AFP ≥ 40 ng/mL, tumor differentiation, MVI were related to HCC recurrence after hepatectomy (AFP cut-off value was analyzed by the ROC curve). Further multivariate analysis revealed that preoperative sarcopenia, AFP ≥ 40 ng/mL, the maximum diameter of tumor > 5 cm, and HBV-DNA level ≥ 2000 IU/mL were independent risk factors of HCC recurrence after hepatectomy, regardless of whether pathological factors were included in the multivariate analysis (Table 3).

Construction and validation of the prediction model

The four available risk factors found to be independent predictors of RFS after hepatectomy were used to develop a SAMD model, and a visual nomogram was established (Figure 2A). The total SAMD score was calculated using the corresponding score obtained from the vertical line of each risk factor coordinate axis (corresponding to the last

Table 1 Baseline characteristics of patients in the training and validation cohorts of hepatocellular carcinoma patients

Characteristic	Total (n = 283)	Training cohort (n = 189)	Validation cohort (n = 94)	P value
Age (yr)	52.71 ± 11.15	52.86 ± 11.65	52.43 ± 10.12	0.760
Gender, n (%)				0.467
Male	241 (85.2)	163 (86.2)	78 (83.0)	
Female	42 (14.8)	26 (13.8)	16 (17.0)	
Sarcopenia, n (%)	91 (32.2)	54 (28.6)	37 (39.4)	0.067
Liver cirrhosis, n (%)	169 (59.7)	105 (55.6)	64 (68.1)	0.053
MVI, n (%)	126 (44.5)	89 (47.1)	37 (39.6)	0.218
Tumor differentiation, n (%)				0.530
Poor	56 (19.8)	33 (17.5)	23 (24.5)	
Moderate	128 (45.2)	81 (42.9)	47 (50.0)	
Well	99 (35.0)	75 (39.6)	24 (25.5)	
Liver capsular invasion	160 (56.5)	112 (59.3)	45 (51.1)	0.190
Maximum diameter of tumor, n (%)				0.062
≤ 3 cm	72 (25.4)	40 (21.2)	32 (34.0)	
3-5 cm	62 (21.9)	43 (22.8)	19 (20.2)	
> 5 cm	149 (52.7)	106 (56.1)	43 (45.7)	
HBV-DNA, n (%)				0.130
< 2000 IU/mL	173 (61.1)	127(67.2)	46 (48.9)	
≥ 2000 IU/mL	110 (38.9)	62 (32.8)	48 (51.1)	
AFP ≥ 40 ng/mL	158 (55.8)	106 (56.1)	52 (55.3)	0.903
ALT, U/L	36 (26-58)	36 (26-51.75)	38.5 (26.75-63.5)	0.191
Total bilirubin (mmol/L)	14.80 (11.15-22.02)	14.80 (11.15-22.02)	19.8 (11.95-30.4)	0.051
Albumin, g/L	40.2 (35.80-43.70)	40.52 (35.43-43.98)	40.2 (36.32-43.02)	0.796
INR	1.02 (0.95-1.09)	1.01 (0.94-1.08)	1.04 (0.96-1.12)	0.146
Leukocyte, 10 ⁹ /L	5.49 (4.24-7.14)	5.38 (4.37-6.49)	6.13 (4.04-8.05)	0.054
PLT, 10 ⁹ /L	154 (105-207)	162 (109-220)	137 (94-185)	0.012
Recurrence	144 (50.9)	104 (55)	40 (42.6)	0.221

MVI: Microvascular invasion; HBV-DNA: Hepatitis B virus deoxyribonucleic acid; AFP: Alpha-fetoprotein; ALT: Alanine aminotransferase; INR: International normalized ratio; PLT: Platelet count.

coordinate axis) to get the 1- and 2-year RFS in each patient. To evaluate the SAMD model, we plotted a calibration curve based on the actual probability of postoperative recurrence and the predicted probability of postoperative recurrence. The calibration curves indicated a good consistency between the predicted and observed results in both the training cohort and validation cohort (Figure 2B). Meanwhile, an online calculator was developed to permit easy clinical application: <https://yuchch.shinyapps.io/DynNomappRFS/>. We can use Dynamic Nomogram to Predicted Survey at the Follow Up.

Predictive value of the model

Furthermore, we compared the SAMD model with other preoperative models and assessed their prognostic values by analyzing the AUC (Figure 3A). The AUC of the SAMD model for predicting 2-year RFS was 0.782 (95%CI: 0.705-0.858) ($P < 0.001$). The sensitivity and specificity were 81% and 63%. The AUC of the verification cohort for predicting 2-year RFS was 0.773 (95%CI: 0.707-0.838), reflecting a good accuracy of the nomogram. For other models, the AUC of the AS score was 0.555 (95%CI: 0.472-0.637, $P = 0.195$), and the sensitivity and specificity were 37.9% and 77.7%, respectively. The AUC of the ERASL-pre model. and the pre-MORAL model was 0.623 (95%CI: 0.543-0.702, $P = 0.004$) and 0.587 (95%CI: 0.506-0.669, $P = 0.038$), respectively. The sensitivity and specificity were 55.8% and 68.1% for the ERASL-pre model and 81.1% and 61.7% for the pre-MORAL model, respectively. From all the above, our nomogram exhibits favorable clinical practicality and is a promising clinical decision-making tool. The SAMD model significantly outperforms other existing prediction systems.

Table 2 Baseline characteristics of and biochemical data of hepatocellular carcinoma patients in the training cohort

Characteristic	Total (n = 189)	Recurrence group (n = 104)	Non-recurrence group (n = 85)	P value
Age (yr)	52.86 ± 11.65	51.92 ± 11.42	54 ± 11.88	0.751
Gender, n (%)				0.579
Male	163 (86.2)	91 (87.5)	72 (84.7)	
Female	26 (13.8)	13 (12.5)	13 (15.3)	
Sarcopenia, n (%)	54 (28.6)	36 (66.7)	18 (33.3)	0.042
Liver cirrhosis, n (%)	105 (55.6)	55 (52.4)	50 (47.6)	0.414
MVI, n (%)	89 (47.1)	56 (62.9)	33 (37.1)	0.04
Tumor differentiation, n (%)				0.008
Poor	33 (17.5)	22 (66.7)	11 (33.3)	
Moderate	81 (42.9)	51 (63.0)	30 (37.0)	
Well	75 (39.6)	31 (41.3)	44 (58.7)	
Liver capsular invasion	112 (59.3)	67 (59.8)	45 (40.2)	0.11
Maximum diameter of tumor, n (%)				0.003
≤ 3 cm	40 (21.2)	16 (40.0)	25 (60.0)	
3-5 cm	43 (22.8)	18 (41.9)	25 (58.1)	
> 5 cm	106 (56.1)	70 (66.0)	38 (34.0)	
HBV-DNA, n (%)				0.002
< 2000 IU/mL	127 (67.2)	60 (47.2)	67 (52.8)	
≥ 2000 IU/mL	62 (32.8)	44 (71.0)	20 (29.0)	
AFP ≥ 40 ng/mL	106 (56.1)	70 (66.0)	36 (34.0)	0.001
ALT, U/L	36 (26-51.75)	36 (28-52.75)	36 (22.25-51)	0.481
Total bilirubin (mmol/L)	14.80 (11.15-22.02)	15.90 (12.15-23.15)	14.3 (10.55-19.70)	0.051
Albumin, g/L	40.52 (35.43-43.98)	39.05 (34.65-43.5)	41 (36.62-44.48)	0.096
INR	1.01 (0.94-1.08)	1.0 (0.95-1.07)	1.01 (0.93-1.09)	0.846
Leukocyte, 10 ⁹ /L	5.38 (4.37-6.49)	5.38 (4.24-6.79)	5.39 (4.5-6.36)	0.921
PLT, 10 ⁹ /L	162 (109-220)	147 (100-200)	176 (116-234)	0.056

MVI: Microvascular invasion; HBV-DNA: Hepatitis B virus deoxyribonucleic acid; AFP: Alpha-fetoprotein; ALT: Alanine aminotransferase; INR: International normalized ratio; PLT: Platelet count.

Finally, the patients were divided into the high-risk and low-risk recurrence groups by the preselected cut-off point of SAMD score ≥ 110. Further, the RFS rates predicted by different models were compared by the kaplan-meier curve (Figure 3B). Meanwhile, according to hazard ratio (HR) by Cox regression, patients in the high-risk group with a SAMD score ≥ 110, ERASL-pre score > 3.521, pre-MORAL score > 7, and AS score ≥ 9.26 had higher likelihood of recurrence events than those patients in the low-risk group with the scores below cut-off points, and the HR were 4.228-fold, 2.053-fold, 1.802-fold, and 1.506-fold, respectively. It is proved that a SAMD score ≥ 110 can better distinguish the high-risk group for postoperative HCC recurrence.

DISCUSSION

Surgical resection is the best option for HCC patients to get a cure[15]. However, it cannot be ignored that a high recurrence rate after surgery. In our study, the recent recurrence rate is as high as 55%. Therefore, it is necessary to analyze the risk factors affecting the recurrence of early-stage HCC patients and establish a predictive model to make the prediction of recurrence risk. This study indicated that preoperative sarcopenic, AFP ≥ 40 ng/mL, the maximum diameter of tumor > 5 cm, and HBV-DNA level ≥ 2000 IU/mL were independent prognostic predictors for recurrence after hepatectomy. More importantly, in predicting the prognosis of HCC patients undergoing hepatectomy, the sarcopenia-based nomogram named SAMD model showed superior discrimination over other indicators, indicating that this

Table 3 Univariate and multivariate Cox proportional hazard models of hepatocellular carcinoma recurrence after hepatectomy involving whether pathological factors in the training cohort

Variable	Univariate analysis			Multivariate analysis without pathological factors			Multivariate analysis with pathological factors		
	HR	95%CI	P value	HR	95%CI	P value	HR	95%CI	P value
Male	1.038	0.58-1.858	0.9						
Age (yr)	0.991	0.975-1.007	0.255						
Sarcopenia	1.61	1.073-2.416	0.022	1.814	1.196-2.751	0.005	1.819	1.199-2.759	0.005
Liver cirrhosis (yes, no)	0.888	0.593-1.328	0.562						
Liver capsular invasion	1.289	0.863-1.927	0.215						
ALT (U/L)	1	0.997-1.002	0.746						
Total bilirubin (mmol/L)	0.994	0.975-1.014	0.577						
Albumin (g/L)	0.971	0.942-1.001	0.061						
INR	1.055	0.951-1.171	0.312						
MVI	1.663	1.13-2.449	0.01						
Tumor differentiation									
Well	Ref.								
Moderate	1.764	1.127-2.76	0.013						
Poor	1.93	1.115-3.34	0.019						
Maximum diameter of tumor									
≤ 3 cm	Ref.			Ref.			Ref.		
3-5 cm	1.063	0.542-2.087	0.858	1.134	0.576-2.233	0.715	1.151	0.585-2.268	0.684
> 5 cm	2.202	1.277-3.796	0.005	2.286	1.322-3.952	0.003	2.228	1.288-3.852	0.004
HBV-DNA									
< 2000 IU/mL	Ref.			Ref.			Ref.		
≥ 2000 IU/mL	2.007	1.358-2.966	< 0.001	2.191	1.468-3.272	< 0.001	2.162	1.45-3.223	< 0.001
AFP ≥ 40 ng/mL	1.92	1.269-2.904	0.002	2.032	1.322-3.952	< 0.001	1.823	1.198-2.773	0.005

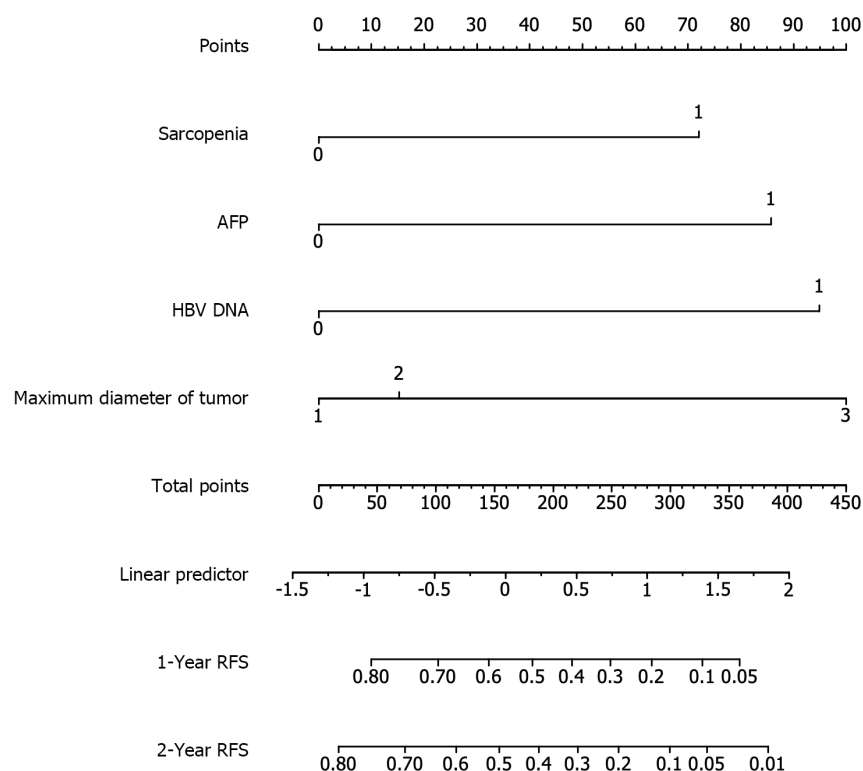
MVI: Microvascular invasion; HBV-DNA: Hepatitis B virus deoxyribonucleic acid; AFP: Alpha-fetoprotein; ALT: Alanine aminotransferase; INR: International normalized ratio; PLT: Platelet count.

nomogram may be helpful for clinical monitoring and timely intervention.

Previous studies have shown that recurrence after hepatectomy is associated with characteristics of tumors themselves, surgery-related factors, and patient's state including large tumor size, satellite lesions, poorly differentiated tumors, vascular invasion, age, male gender, and so on[16-19]. In this study, MVI, tumor differentiation degree, and tumor diameter were statistically different between the recurrence and non-recurrence groups. Since many risk factors of HCC recurrence can not be modified (such as age and pathological type), our focus should be on factors that can be intervened or improved preoperatively, which is even more attractive for clinical treatment guidance.

Our study found that 28.6% patients presented with sarcopenia, 66.7% of which experienced postoperative recurrence in the training cohort. Sarcopenia is accepted as one of the independent risk factors for postoperative recurrence[10]. Patients without sarcopenia can typically achieve a more prolonged RFS during follow-up. dietary supplementation may substantially improve muscle mass in cancer patients[20]. The mechanism underlying the association between sarcopenia and HCC recurrence is unclear but may be related to the tumor microenvironment (inflammation and immunity) and cytokine (myokines and adipokines)[21]. It seems promising to improve the prognosis through nutritional intervention. However, correcting the nutritional status takes a long time, and delaying surgical intervention in patients with cancer may worsen the prognosis and result in tumor progression. Therefore, we should strengthen the preoperative and postoperative monitoring of sarcopenia, supplement nutritional treatment, and implement long-term monitoring of nutritional status. Since every patient after hepatectomy of HCC requires an abdominal CT examination in follow-up. Determining sarcopenia by calculating abdominal CT SMI is feasible and objective, which shortens the patient's time and does not increase additional evaluation costs.

A



B

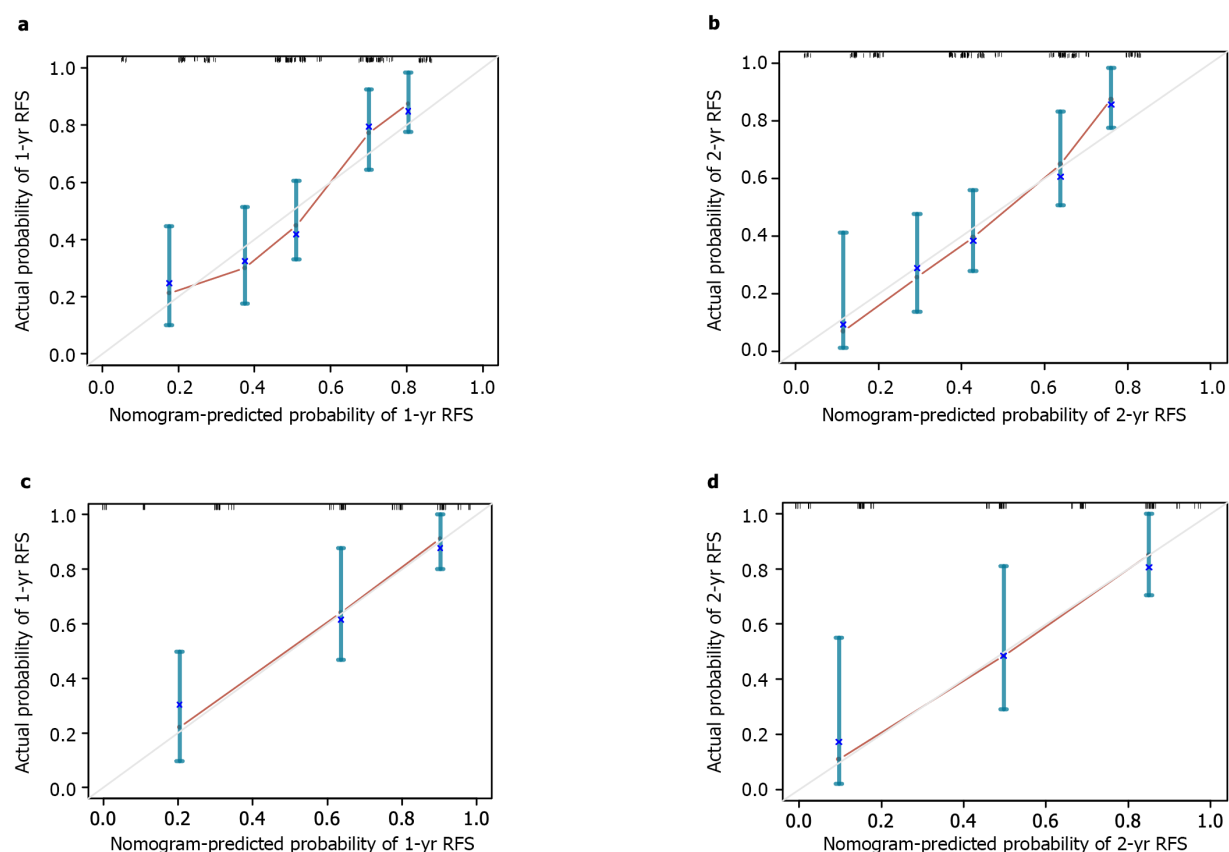


Figure 2 Predicting the probability of 1- and 2-yr recurrence-free survival in hepatocellular carcinoma patients at 1- and 2-yr after hepatectomy using a visualized SAMD model's nomogram (SAMD model: Sarcopenia, alpha-fetoprotein ≥ 40 ng/mL, the maximum diameter of tumor > 5 cm, and hepatitis B virus level ≥ 2000 IU/mL). A: Calibration plots of predicted 1- and 2-yr recurrence-free survival based on the cox regression model in the training and validation cohorts; B: Training cohort (a and b); validation cohort (c and d). AFP: Alpha-fetoprotein; RFS: Recurrence-free

survival; HBV: Hepatitis B virus; SAMD: Based on the sarcopenia to assess the recurrence-free survival model of hepatectomy with hepatitis B-related liver cancer disease.

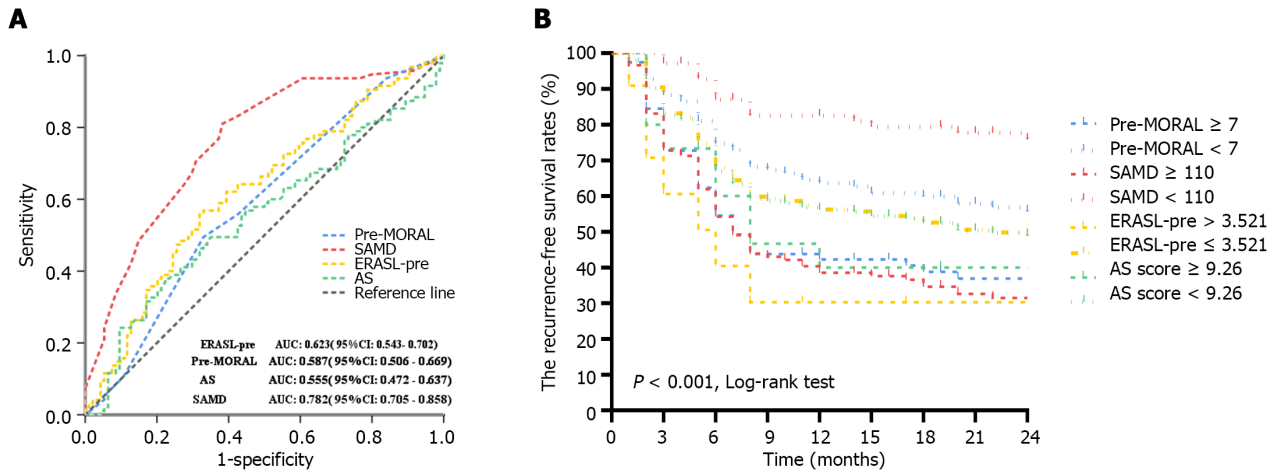


Figure 3 Comparison of receiver operating characteristic curves and recurrence-free survival rates between SAMD model and other models in predicting 2-year recurrence in hepatocellular carcinoma patients after hepatectomy. SAMD model [sarcopenia, alpha-fetoprotein (AFP) ≥ 40 ng/mL, the maximum diameter of tumor > 5 cm, and hepatitis B virus deoxyribonucleic acid level ≥ 2000 IU/mL]; assessment for surveillance interval score (age and international normalized ratio); pre-model of recurrence after liver transplantation (tumor size > 3 cm, AFP ≥ 200 ng/mL, and Neutrophil-to-lymphocyte ratio > 5); the pre-operative model, early recurrence after surgery for liver tumor: (Gender, albumin-bilirubin grade, AFP, tumor size, and tumor number). A: Receiver operating curve; B: Recurrence-free survival rates. pre-MORAL: Pre-model of recurrence after liver transplantation; ERASL-pre: The pre-operative model, early recurrence after surgery for liver tumor; AS: Assessment for Surveillance interval score; SAMD: Based on the sarcopenia to assess the recurrence-free survival model of hepatectomy with hepatitis B-related liver cancer disease.

On the other hand, HBV infection is the leading cause of HCC worldwide, accounting for 33% of cases[22], which is also still one of the main factors causing HCC in China[5]. Many studies have shown that viral load plays a crucial role in the prognosis of HCC[23,24]. In this study, we observed a more significant recurrence rate in patients with high viral load. HBV DNA levels ≥ 2000 IU/mL were an independent prognostic factor for HCC recurrence after curative hepatectomy. At the same time, we also observed that although the recurrence rate is low in low-level viremia, 47.2% of patients still have a recurrence. Studies have shown that low-level viremia patients with a relatively low viral load can still benefit from effective antiviral therapy, significantly reducing HCC recurrence after hepatic resection[25]. Herein, it is recommended to use a highly sensitive real-time quantitative PCR method to detect HBV DNA, with a lower quantitative limit of 10-20 IU/mL or even lower, thereby initiating antiviral therapy or adjusting the treatment schedule promptly.

Several studies have proposed the prediction models of HCC recurrence, such as the preoperative (ERASL-pre) and postoperative (ERASL-post) risk models[5] based on gender, ALBI score, serum AFP, and tumor volume and quantity. The pre-MORAL and postoperative post-MORAL models[6] can predict recurrence after liver transplantation. The RETREAT scale can also assess the risk of recurrence after liver transplantation[5]. The AS score evaluates the risk of recurrence after liver resection and radiofrequency ablation[4]. However, the current prediction models didn't consider nutritional factors. Therefore, we compared the SAMD model with other preoperative prediction models and revealed that the SAMD model was more capable of predicting postoperative recurrence. Furthermore, compared for the different models prediction of RFS between the low- and high-risk groups, which revealed that the RFS rate in the high-risk patients with a SAMD model was lower than that in patients with an AS score and pre-MORAL. Patients in the high-risk group of the SAMD scores, the ERASL-pre scores, the Pre-MORAL scores and the AS scores had higher likelihood of recurrence events, and the hazard regression ratio are 4.228-fold, 2.053-fold, 1.802-fold and 1.506-fold, respectively. It is proved that a SAMD score was better to distinguish the high-risk group of postoperative recurrence of HCC than other model. Besides, a SAMD score < 110 can better distinguish the low-risk group of postoperative HCC recurrence, which is also significantly outperforms other prediction models. The RFS curve of the SAMD model indicates that the application of this model may extend the monitoring interval for low-risk patients, reduce patient economic costs, and improve social benefits.

However, the present study also has some limitations. Firstly, as a retrospective single-center study, this study has a limited sample size. This could limit the generalizability of the findings to a broader population. Extensive prospective studies with different geographical locations, ethnic backgrounds, or healthcare systems are needed to verify the model's efficacy. Secondly, the study does not seem to account for potential confounding factors that could influence the results, such as the patient's overall health status, lifestyle factors, or other comorbidities. Patients with liver cirrhosis and those without liver cirrhosis were included in this study. Although these groups were well-balanced, different grades of liver cirrhosis and varying degrees of portal hypertension might introduce selection bias and impact our results. On the other hand, limitations in statistical methods may also affect the effectiveness of the model. In addition, only the hepatitis B

population was selected in this study, lacking the discussion of other causes.

CONCLUSION

In conclusion, we revealed that sarcopenia before hepatectomy is associated with recent recurrence after hepatectomy for hepatitis B-related HCC patients, and the prediction model based on liver nutrition was first established for postoperative recurrence of hepatitis B-related HCC. the SAMD model based on sarcopenia has favorable performance in predicting RFS in patients undergoing hepatectomy for hepatitis B-related HCC. It is helpful for the comprehensive clinical intervention in such patients. In the future, we need to further validate and apply this model, and conduct prospective studies to explore the impact of nutritional interventions on patient survival outcomes.

ARTICLE HIGHLIGHTS

Research background

The recurrence of hepatocellular carcinoma (HCC) has a significant impact on the survival outcomes of patients, and early prediction and intervention can help improve patient survival outcomes. Nutritional factors have always been a hot topic of concern and are prone to intervention.

Research motivation

Sarcopenia is one of the effective indicators for evaluating nutritional status in chronic liver disease, which was reported that sarcopenia as a negative prognostic factor in patients with HCC. Hence, it is necessary to incorporate them into models for predicting early recurrence of HCC to screen out high-risk groups, as they may require more aggressive intervention.

Research objectives

This study aimed to construct a nutrition-based model to estimate recurrence-free survival (RFS) after hepatectomy for hepatitis B-related HCC based on sarcopenia.

Research methods

According to the inclusion and exclusion criteria, 283 patients with hepatitis B-related HCC were eventually enrolled in this retrospective study: 189 patients in the training cohort and 94 patients in the validation cohort. Skeletal muscle index at the third lumbar spine was evaluated according to abdominal computed tomography scans before hepatectomy. Independent predictors of disease recrudescence were evaluated with univariate and multivariate Cox proportional hazard models in training cohort, and A nomogram model was developed to predict the RFS of HCC patients. Its predictive performance was validated in the validation cohort. Furthermore, we compared the predictive model with other preoperative models and assessed their prognostic values by analyzing the time-dependent area under the receiver operating characteristic curve (tdAUROC).

Research results

Our data demonstrated that among 144 (50.9%) patients developed recurrence within 2 years after hepatectomy, and the median RFS was 7.67 months (95%CI: 6.59-8.75). Multivariate analysis showed that sarcopenia, alpha-fetoprotein ≥ 40 ng/mL, the maximum diameter of tumor > 5 cm, and hepatitis B virus DNA level ≥ 2000 IU/mL were independent risk factors associated with postoperative recurrence of HCC. The SAMD model predicting the RFS of HCC patients was established based on the above factors. The area under the curve of the SAMD model was 0.782 (95%CI: 0.705-0.858) in the training cohort (sensitivity 81%, specificity 63%) and 0.773 (95%CI: 0.707-0.838) in the validation cohort. Besides, a SAMD score ≥ 110 was better to distinguish the high-risk group of postoperative recurrence of HCC compared to other models. Further multicenter studies are warranted to validate our findings.

Research conclusions

Our study highlights the strong correlation between sarcopenia and recent recurrence after hepatectomy for hepatitis B-related HCC. A predictive model based on sarcopenia for assessing recent recurrence after liver resection for hepatitis B-associated hepatocellular carcinoma was developed for the first time.

Research perspectives

The SAMD model based on sarcopenia has favorable performance in predicting RFS in patients undergoing hepatectomy for hepatitis B-related HCC. It is helpful for the comprehensive clinical intervention in such patients. In the future, we need to further validate and apply this model, and conduct prospective studies to explore the impact of nutritional interventions on patient survival outcomes.

ACKNOWLEDGEMENTS

The authors thank the volunteers who participated in the study and the reviewers for their helpful comments on this paper.

FOOTNOTES

Co-first authors: Hong Peng and Si-Yi Lei.

Author contributions: Peng H and Lei SY contributed equally to this work; Peng H and Lei SY conceptualized and designed the study; Fan W, Dai Y, Zhang Y and Chen G were the hepatobiliary surgery specialists; Fan W, Dai Y, Zhang Y and Chen G, Liu TZ and Xu JH acquired the data; Lei SY and Huang Y analyzed and interpreted the data; Xiong TT, Wang XF and Luo XH provided fund support; Lei SY drafted the manuscript; Peng H and Luo XH critically revised the manuscript for important intellectual content; Peng H, Fan W, Zhang Y and Luo XH provided administrative, technical, or material support; Peng H and Luo XH supervised the study. All authors made a significant contribution to this study and approved the final manuscript.

Supported by Guizhou Provincial Science and Technology Projects, No. [2021]013 and No. [2021]053; and Doctor Foundation of Guizhou Provincial People's Hospital, No. GZSYBS[2021]07.

Institutional review board statement: The 1975 Declaration of Helsinki's ethical principles were followed by the research design. The ethics committee of the Guizhou Provincial People's Hospital authorized the investigation, which attests to this (Approval No: 2023-009).

Informed consent statement: Due to the study's retrospective character, an exemption from the informed consent criteria was authorized.

Conflict-of-interest statement: All the authors report no relevant conflicts of interest for this article.

Data sharing statement: The datasets generated during and analyzed during the current study are not publicly available due to participant privacy issues but are available from the corresponding author at Luoxinhua1972@126.com upon reasonable request.

Open-Access: This article is an open-access article that was selected by an in-house editor and fully peer-reviewed by external reviewers. It is distributed in accordance with the Creative Commons Attribution NonCommercial (CC BY-NC 4.0) license, which permits others to distribute, remix, adapt, build upon this work non-commercially, and license their derivative works on different terms, provided the original work is properly cited and the use is non-commercial. See: <https://creativecommons.org/licenses/by-nc/4.0/>

Country/Territory of origin: China

ORCID number: Xin-Hua Luo [0000-0001-8285-3063](https://orcid.org/0000-0001-8285-3063).

S-Editor: Liu H

L-Editor: A

P-Editor: Chen YX

REFERENCES

- Bureau of Medical Administration**, National Health Commission of the People's Republic of China. [Standardization for diagnosis and treatment of hepatocellular carcinoma (2022 edition)]. *Zhonghua Gan Zang Bing Za Zhi* 2022; **30**: 367-388 [PMID: [35545562](#) DOI: [10.3760/cma.j.cn501113-20220413-00193](#)]
- Kanda T**, Ogasawara S, Chiba T, Haga Y, Omata M, Yokosuka O. Current management of patients with hepatocellular carcinoma. *World J Hepatol* 2015; **7**: 1913-1920 [PMID: [26244066](#) DOI: [10.4254/wj.h.v7.i15.1913](#)]
- Tampaki M**, Papatheodoridis GV, Cholongitas E. Intrahepatic recurrence of hepatocellular carcinoma after resection: an update. *Clin J Gastroenterol* 2021; **14**: 699-713 [PMID: [33774785](#) DOI: [10.1007/s12328-021-01394-7](#)]
- Lee M**, Chang Y, Oh S, Cho YY, Jung DE, Kim HH, Nam JY, Cho H, Cho EJ, Lee JH, Yu SJ, Yi NJ, Lee KW, Lee DH, Lee JM, Yoon JH, Suh KS, Kim YJ. Assessment of the Surveillance Interval at 1 Year after Curative Treatment in Hepatocellular Carcinoma: Risk Stratification. *Gut Liver* 2018; **12**: 571-582 [PMID: [29730905](#) DOI: [10.5009/gnl17365](#)]
- Mehta N**, Heimbach J, Harnois DM, Sapisochin G, Dodge JL, Lee D, Burns JM, Sanchez W, Greig PD, Grant DR, Roberts JP, Yao FY. Validation of a Risk Estimation of Tumor Recurrence After Transplant (RETREAT) Score for Hepatocellular Carcinoma Recurrence After Liver Transplant. *JAMA Oncol* 2017; **3**: 493-500 [PMID: [27838698](#) DOI: [10.1001/jamaoncol.2016.5116](#)]
- Halazun KJ**, Najjar M, Abdelmessih RM, Samstein B, Griesemer AD, Guarrera JV, Kato T, Verna EC, Emond JC, Brown RS Jr. Recurrence After Liver Transplantation for Hepatocellular Carcinoma: A New MORAL to the Story. *Ann Surg* 2017; **265**: 557-564 [PMID: [27611615](#) DOI: [10.1097/SLA.0000000000001966](#)]
- Simonsen C**, de Heer P, Bjerre ED, Suetta C, Hojman P, Pedersen BK, Svendsen LB, Christensen JF. Sarcopenia and Postoperative Complication Risk in Gastrointestinal Surgical Oncology: A Meta-analysis. *Ann Surg* 2018; **268**: 58-69 [PMID: [29373365](#) DOI: [10.1097/SLA.0000000000002679](#)]
- Berardi G**, Antonelli G, Colasanti M, Meniconi R, Guglielmo N, Laurenzi A, Ferretti S, Levi Sandri GB, Spagnoli A, Moschetta G, Schinà V, Antonini M, Marignani M, Ettorre GM. Association of Sarcopenia and Body Composition With Short-term Outcomes After Liver Resection

- for Malignant Tumors. *JAMA Surg* 2020; **155**: e203336 [PMID: 32965483 DOI: 10.1001/jamasurg.2020.3336]
- 9 **Kamachi S**, Mizuta T, Otsuka T, Nakashita S, Ide Y, Miyoshi A, Kitahara K, Eguchi Y, Ozaki I, Anzai K. Sarcopenia is a risk factor for the recurrence of hepatocellular carcinoma after curative treatment. *Hepatol Res* 2016; **46**: 201-208 [PMID: 26223826 DOI: 10.1111/hepr.12562]
- 10 **Kim YR**, Park S, Han S, Ahn JH, Kim S, Sinn DH, Jeong WK, Ko JS, Gwak MS, Kim GS. Sarcopenia as a predictor of post-transplant tumor recurrence after living donor liver transplantation for hepatocellular carcinoma beyond the Milan criteria. *Sci Rep* 2018; **8**: 7157 [PMID: 29740069 DOI: 10.1038/s41598-018-25628-w]
- 11 **Lai JC**, Tandon P, Bernal W, Tapper EB, Ekong U, Dasarathy S, Carey EJ. Malnutrition, Frailty, and Sarcopenia in Patients With Cirrhosis: 2021 Practice Guidance by the American Association for the Study of Liver Diseases. *Hepatology* 2021; **74**: 1611-1644 [PMID: 34233031 DOI: 10.1002/hep.32049]
- 12 **Chinese Society of Hepatology**; Chinese Medical Association. [The consensus on tertiary prevention of primary liver cancer (2022 version)]. *Zhonghua Gan Zang Bing Za Zhi* 2022; **30**: 832-845 [PMID: 36207940 DOI: 10.3760/cma.j.cn501113-20220616-00330]
- 13 **Wen T**, Jin C, Facciorusso A, Donadon M, Han HS, Mao Y, Dai C, Cheng S, Zhang B, Peng B, Du S, Jia C, Xu F, Shi J, Sun J, Zhu P, Nara S, Millis JM; MDT of West China Hospital*. Multidisciplinary management of recurrent and metastatic hepatocellular carcinoma after resection: an international expert consensus. *Hepatobiliary Surg Nutr* 2018; **7**: 353-371 [PMID: 30498711 DOI: 10.21037/hbsn.2018.08.01]
- 14 **Nishikawa H**, Shiraki M, Hiramatsu A, Moriya K, Hino K, Nishiguchi S. Japan Society of Hepatology guidelines for sarcopenia in liver disease (1st edition): Recommendation from the working group for creation of sarcopenia assessment criteria. *Hepatol Res* 2016; **46**: 951-963 [PMID: 27481650 DOI: 10.1111/hepr.12774]
- 15 **Agopian VG**, Petrowsky H, Kaldas FM, Zarrinpar A, Farmer DG, Yersiz H, Holt C, Harlander-Locke M, Hong JC, Rana AR, Venick R, McDiarmid SV, Goldstein LI, Durazo F, Saab S, Han S, Xia V, Hiatt JR, Busuttil RW. The evolution of liver transplantation during 3 decades: analysis of 5347 consecutive liver transplants at a single center. *Ann Surg* 2013; **258**: 409-421 [PMID: 24022434 DOI: 10.1097/SLA.0b013e3182a15db4]
- 16 **Xu XF**, Xing H, Han J, Li ZL, Lau WY, Zhou YH, Gu WM, Wang H, Chen TH, Zeng YY, Li C, Wu MC, Shen F, Yang T. Risk Factors, Patterns, and Outcomes of Late Recurrence After Liver Resection for Hepatocellular Carcinoma: A Multicenter Study From China. *JAMA Surg* 2019; **154**: 209-217 [PMID: 30422241 DOI: 10.1001/jamasurg.2018.4334]
- 17 **Zheng J**, Chou JF, Gönen M, Vachharajani N, Chapman WC, Majella Doyle MB, Turcotte S, Vandenbroucke-Menu F, Lapointe R, Buettner S, Groot Koerkamp B, Ijzermans JNM, Chan CY, Goh BKP, Teo JY, Kam JH, Jeyaraj PR, Cheow PC, Chung AYF, Chow PKH, Ooi LLPJ, Balachandran VP, Kingham TP, Allen PJ, D'Angelica MI, DeMatteo RP, Jarnagin WR, Lee SY. Prediction of Hepatocellular Carcinoma Recurrence Beyond Milan Criteria After Resection: Validation of a Clinical Risk Score in an International Cohort. *Ann Surg* 2017; **266**: 693-701 [PMID: 28650354 DOI: 10.1097/SLA.0000000000002360]
- 18 **Zhao H**, Chen C, Gu S, Yan X, Jia W, Mao L, Qiu Y. Anatomical versus non-anatomical resection for solitary hepatocellular carcinoma without macroscopic vascular invasion: A propensity score matching analysis. *J Gastroenterol Hepatol* 2017; **32**: 870-878 [PMID: 27671209 DOI: 10.1111/jgh.13603]
- 19 **Erstad DJ**, Tanabe KK. Prognostic and Therapeutic Implications of Microvascular Invasion in Hepatocellular Carcinoma. *Ann Surg Oncol* 2019; **26**: 1474-1493 [PMID: 30788629 DOI: 10.1245/s10434-019-07227-9]
- 20 **Morley JE**, Argiles JM, Evans WJ, Bhasin S, Cella D, Deutz NE, Doehner W, Fearon KC, Ferrucci L, Hellerstein MK, Kalantar-Zadeh K, Lochs H, MacDonald N, Mulligan K, Muscaritoli M, Ponikowski P, Posthauer ME, Rossi Fanelli F, Schambelan M, Schols AM, Schuster MW, Anker SD; Society for Sarcopenia, Cachexia, and Wasting Disease. Nutritional recommendations for the management of sarcopenia. *J Am Med Dir Assoc* 2010; **11**: 391-396 [PMID: 20627179 DOI: 10.1016/j.jamda.2010.04.014]
- 21 **Lutz CT**, Quinn LS. Sarcopenia, obesity, and natural killer cell immune senescence in aging: altered cytokine levels as a common mechanism. *Aging (Albany NY)* 2012; **4**: 535-546 [PMID: 22935594 DOI: 10.18632/aging.100482]
- 22 **Caines A**, Selim R, Salgia R. The Changing Global Epidemiology of Hepatocellular Carcinoma. *Clin Liver Dis* 2020; **24**: 535-547 [PMID: 33012444 DOI: 10.1016/j.cld.2020.06.001]
- 23 **Kim TS**, Sinn DH, Kang W, Gwak GY, Paik YH, Choi MS, Lee JH, Koh KC, Paik SW. Hepatitis B virus DNA levels and overall survival in hepatitis B-related hepatocellular carcinoma patients with low-level viremia. *J Gastroenterol Hepatol* 2019; **34**: 2028-2035 [PMID: 31157456 DOI: 10.1111/jgh.14750]
- 24 **Kubo S**, Hirohashi K, Tanaka H, Tsukamoto T, Shuto T, Yamamoto T, Ikebe T, Wakasa K, Nishiguchi S, Kinoshita H. Effect of viral status on recurrence after liver resection for patients with hepatitis B virus-related hepatocellular carcinoma. *Cancer* 2000; **88**: 1016-1024 [PMID: 10699889 DOI: 10.1002/(sici)1097-0142(20000301)88:5<1016::aid-cncl10>3.0.co;2-v]
- 25 **Huang G**, Li PP, Lau WY, Pan ZY, Zhao LH, Wang ZG, Wang MC, Zhou WP. Antiviral Therapy Reduces Hepatocellular Carcinoma Recurrence in Patients With Low HBV-DNA Levels: A Randomized Controlled Trial. *Ann Surg* 2018; **268**: 943-954 [PMID: 29521740 DOI: 10.1097/SLA.0000000000002727]



Published by **Baishideng Publishing Group Inc**
7041 Koll Center Parkway, Suite 160, Pleasanton, CA 94566, USA

Telephone: +1-925-3991568

E-mail: office@baishideng.com

Help Desk: <https://www.f6publishing.com/helpdesk>

<https://www.wjgnet.com>

