

World Journal of *Diabetes*

World J Diabetes 2021 November 15; 12(11): 1812-1968



EDITORIAL

- 1812** Long-term effects of metformin use in gestational diabetes mellitus on offspring health
Roy A, Sahoo J

REVIEW

- 1818** Organophosphate pesticides and new-onset diabetes mellitus: From molecular mechanisms to a possible therapeutic perspective
Chung YL, Hou YC, Wang IK, Lu KC, Yen TH
- 1832** Anti-diabetics and antimicrobials: Harmony of mutual interplay
Hegazy WAH, Rajab AAH, Abu Lila AS, Abbas HA
- 1856** Effect of glycemic control on markers of subclinical atherosclerosis in patients with type 2 diabetes mellitus: A review
Antoniou S, Naka KKK, Papadakis M, Bechlioulis A, Tsatsoulis A, Michalis LK, Tigas S

ORIGINAL ARTICLE**Basic Study**

- 1875** Profilin-1 is involved in macroangiopathy induced by advanced glycation end products *via* vascular remodeling and inflammation
Xiao ZL, Ma LP, Yang DF, Yang M, Li ZY, Chen MF
- 1894** p66Shc-mediated oxidative stress is involved in gestational diabetes mellitus
Huang TT, Sun WJ, Liu HY, Ma HL, Cui BX

Retrospective Cohort Study

- 1908** Factors influencing the effectiveness of using flash glucose monitoring on glycemic control for type 1 diabetes in Saudi Arabia
Alhodaib HI, Alsulihem S

Observational Study

- 1917** Association between admission hemoglobin level and prognosis in patients with type 2 diabetes mellitus
Song HY, Wei CM, Zhou WX, Hu HF, Wan QJ
- 1928** Role of hepatitis A virus in diabetes mellitus
Lin J, Ou HY, Karnchanasorn R, Samoa R, Chuang LM, Chiu KC
- 1942** Adherence to Mediterranean diet and advanced glycation endproducts in patients with diabetes
Grahovac M, Kumric M, Vilovic M, Martinovic D, Kreso A, Ticinovic Kurir T, Vrdoljak J, Prizmic K, Božić J

- 1957** Comprehensive genetic screening reveals wide spectrum of genetic variants in monogenic forms of diabetes among Pakistani population

Rafique I, Mir A, Siddiqui S, Saqib MAN, Fawwad A, Marchand L, Adnan M, Naeem M, Basit A, Polychronakos C

LETTER TO THE EDITOR

- 1967** Letter to editor 'Gastroenteropathy in gastric cancer patients concurrent with diabetes mellitus'

Cheng YX, Tao W, Zhang W, Peng D

ABOUT COVER

Editorial Board Member of *World Journal of Diabetes*, Radovan Hojs, MD, PhD, Full Professor, Clinic for Internal Medicine, University Medical Centre Maribor, Maribor 2000, Slovenia. radovan.hojs@guest.arnes.si

AIMS AND SCOPE

The primary aim of *World Journal of Diabetes* (*WJD*, *World J Diabetes*) is to provide scholars and readers from various fields of diabetes with a platform to publish high-quality basic and clinical research articles and communicate their research findings online.

WJD mainly publishes articles reporting research results and findings obtained in the field of diabetes and covering a wide range of topics including risk factors for diabetes, diabetes complications, experimental diabetes mellitus, type 1 diabetes mellitus, type 2 diabetes mellitus, gestational diabetes, diabetic angiopathies, diabetic cardiomyopathies, diabetic coma, diabetic ketoacidosis, diabetic nephropathies, diabetic neuropathies, Donohue syndrome, fetal macrosomia, and prediabetic state.

INDEXING/ABSTRACTING

The *WJD* is now abstracted and indexed in Science Citation Index Expanded (SCIE, also known as SciSearch®), Current Contents/Clinical Medicine, Journal Citation Reports/Science Edition, PubMed, and PubMed Central. The 2021 Edition of Journal Citation Reports® cites the 2020 impact factor (IF) for *WJD* as 3.763; IF without journal self cites: 3.684; 5-year IF: 7.348; Journal Citation Indicator: 0.64□Ranking: 80 among 145 journals in endocrinology and metabolism; and Quartile category: Q3.

RESPONSIBLE EDITORS FOR THIS ISSUE

Production Editor: Lin-YuTong Wang; Production Department Director: Yu-Jie Ma; Editorial Office Director: Jia-Ping Yan.

NAME OF JOURNAL

World Journal of Diabetes

ISSN

ISSN 1948-9358 (online)

LAUNCH DATE

June 15, 2010

FREQUENCY

Monthly

EDITORS-IN-CHIEF

Lu Cai, Md. Shahidul Islam, Jian-Bo Xiao, Manfredi Rizzo

EDITORIAL BOARD MEMBERS

<https://www.wjnet.com/1948-9358/editorialboard.htm>

PUBLICATION DATE

November 15, 2021

COPYRIGHT

© 2021 Baishideng Publishing Group Inc

INSTRUCTIONS TO AUTHORS

<https://www.wjnet.com/bpg/gerinfo/204>

GUIDELINES FOR ETHICS DOCUMENTS

<https://www.wjnet.com/bpg/GerInfo/287>

GUIDELINES FOR NON-NATIVE SPEAKERS OF ENGLISH

<https://www.wjnet.com/bpg/gerinfo/240>

PUBLICATION ETHICS

<https://www.wjnet.com/bpg/GerInfo/288>

PUBLICATION MISCONDUCT

<https://www.wjnet.com/bpg/gerinfo/208>

ARTICLE PROCESSING CHARGE

<https://www.wjnet.com/bpg/gerinfo/242>

STEPS FOR SUBMITTING MANUSCRIPTS

<https://www.wjnet.com/bpg/GerInfo/239>

ONLINE SUBMISSION

<https://www.f6publishing.com>

Observational Study

Association between admission hemoglobin level and prognosis in patients with type 2 diabetes mellitus

Hai-Ying Song, Cui-Mei Wei, Wen-Xiong Zhou, Hao-Fei Hu, Qi-Jun Wan

ORCID number: Hai-Ying Song 0000-0003-4086-6194; Cui-Mei Wei 0000-0003-3155-2636; Wen-Xiong Zhou 0000-0001-8183-782X; Hao-Fei Hu 0000-0001-6061-6796; Qi-Jun Wan 0000-0002-5039-4015.

Author contributions: Song HY, Hu HF, and Wan QJ contributed to the study concept and design, acquired and interpreted the data, and drafted the manuscript, and they are the guarantors of this work and, as such, had full access to all the data in the study and take responsibility for the integrity of the data and the accuracy of the data analysis; Wei CM and Zhou WX cross-checked the data and reviewed the manuscript; Wei CM oversaw the progress of the project and contributed to the discussion; all authors read and approved the final manuscript.

Supported by the Research Project of Health and Family Planning Commission of Shenzhen Municipality, No. SZFZ2018063; Shenzhen Key Medical Discipline Construction Fund, No. SZXK009; Sanming Project of Medicine in Shenzhen, No. SZSM201512004; and Shenzhen Second People's Hospital Clinical Research Fund of Guangdong Province High-level Hospital Construction Project, No. 20203357003 and No. 20213357018.

Hai-Ying Song, Cui-Mei Wei, Wen-Xiong Zhou, Hao-Fei Hu, Qi-Jun Wan, Department of Nephrology, The First Affiliated Hospital of Shenzhen University, Shenzhen Second People's Hospital, Shenzhen 518035, Guangdong Province, China

Hai-Ying Song, Cui-Mei Wei, Wen-Xiong Zhou, Hao-Fei Hu, Qi-Jun Wan, Department of Nephrology, Shenzhen University Health Science Center, Shenzhen 518035, Guangdong Province, China

Corresponding author: Qi-Jun Wan, PhD, Department of Nephrology, The First Affiliated Hospital of Shenzhen University, Shenzhen Second People's Hospital, No. 3002 Sungang West Road, Futian District, Shenzhen 518035, Guangdong Province, China. jiyuan2224@sina.com

Abstract

BACKGROUND

Anaemia is common in patients with chronic kidney disease (CKD) and is a major risk factor that contributes to mortality in such patients. Type 2 diabetes mellitus (T2DM) is one of the leading causes of CKD. The association between admission hemoglobin levels and renal damage in patients with T2DM remains unclear.

AIM

To evaluate the relationship between admission hemoglobin levels and prognosis in patients with T2DM.

METHODS

We performed a retrospective analysis of 265 consecutive patients presenting with T2DM between 2011 and 2015. The composite endpoint was end-stage renal disease or a 50% reduction in the estimated glomerular filtration rate.

RESULTS

In multivariable-adjusted Cox proportional hazards models (adjusting for demographic factors, traditional risk factors, lipids), the adjusted hazard ratios (HRs) for the highest and middle tertiles compared to the lowest tertile of hemoglobin were 0.82 (95%CI: 0.11-6.26, $P = 0.8457$) and 0.28 (95%CI: 0.09-0.85, $P = 0.0246$), respectively. However, after further adjustment for glycaemia control, hemoglobin was positively related to the risk of the composite endpoint (HR: 1.05, 95%CI: 0.14-8.09, $P = 0.9602$) when the highest tertile was compared to the lowest tertile of hemoglobin. We found a U-shaped relationship between hemoglobin levels and the composite endpoint. The curve tended to reach the lowest level at

Institutional review board

statement: The proposal was approved by the Clinical Research Ethical Committee of the Shenzhen Second People's Hospital, and all subjects provided informed consent before enrollment. We adhered to the principles of the Declaration of Helsinki. The procedures followed were in accordance with institutional guidelines.

Informed consent statement:

Informed consent statement was waived.

Conflict-of-interest statement:

The authors declare that they have no conflicts of interest to disclose.

Data sharing statement:

No additional data are available.

STROBE statement:

The authors have read the STROBE Statement – checklist of items, and the manuscript was prepared and revised according to the STROBE Statement – checklist of items.

Open-Access: This article is an open-access article that was selected by an in-house editor and fully peer-reviewed by external reviewers. It is distributed in accordance with the Creative Commons Attribution NonCommercial (CC BY-NC 4.0) license, which permits others to distribute, remix, adapt, build upon this work non-commercially, and license their derivative works on different terms, provided the original work is properly cited and the use is non-commercial. See: <http://creativecommons.org/licenses/by-nc/4.0/>

Provenance and peer review:

Unsolicited article; Externally peer reviewed

Specialty type: Endocrinology and metabolism

Country/Territory of origin: China

Peer-review report's scientific quality classification

Grade A (Excellent): 0

Grade B (Very good): B

Grade C (Good): 0

an optimal hemoglobin level.

CONCLUSION

Among patients with T2DM, a U-shaped relationship was observed between hemoglobin levels and renal damage. A lower admission hemoglobin level (hemoglobin < 13.3 g/dL) is an independent predictor of renal damage.

Key Words: Type 2 diabetes mellitus; Hemoglobin; Renal damage; Prognosis

©The Author(s) 2021. Published by Baishideng Publishing Group Inc. All rights reserved.

Core Tip: A U-shaped exposure-response relationship exists between admission hemoglobin levels and the composite endpoint among patients with type 2 diabetes mellitus. A lower admission hemoglobin level (hemoglobin < 13.3 g/dL) is an independent predictor of renal damage. Hemoglobin is a convenient and feasible way to identify those patients who are at high risk of having a poor prognosis.

Citation: Song HY, Wei CM, Zhou WX, Hu HF, Wan QJ. Association between admission hemoglobin level and prognosis in patients with type 2 diabetes mellitus. *World J Diabetes* 2021; 12(11): 1917-1927

URL: <https://www.wjgnet.com/1948-9358/full/v12/i11/1917.htm>

DOI: <https://dx.doi.org/10.4239/wjd.v12.i11.1917>

INTRODUCTION

Anaemia is a common complication of chronic kidney disease (CKD). Low hemoglobin level is one of the major risk factors for cardiovascular disease (CVD) and mortality and poor prognosis in CKD patients[1-4]. However, some studies have shown that higher hemoglobin levels slightly increase the risk of death[5], and elevations in hemoglobin levels have been implicated in a higher risk of mortality and cardiovascular events[6,7]. Information on the association of hemoglobin and renal damage is uncertain, and the optimal hemoglobin target in CKD patients remains controversial. Type 2 diabetes mellitus (T2DM) is one of the leading causes of CKD. The admission hemoglobin levels would influence the prognosis in patients with T2DM. In the present study, we aimed to evaluate the relationship between admission hemoglobin levels and the prevalence of renal damage and the decline in the estimated glomerular filtration rate (eGFR) in patients with T2DM. Our hypothesis was that there may be an optimal hemoglobin level about the relationship between hemoglobin and renal progression in patients with T2DM. This study may help us to find the optimal hemoglobin level. And the optimal hemoglobin level may be used as an intervention target for patients with T2DM.

MATERIALS AND METHODS

This was a retrospective cohort study. The details of this study were described previously[8]. We used the database from the Shenzhen Second People's Hospital and reviewed the records. A total of 265 patients diagnosed with T2DM were enrolled between January 2011 and December 2015 and followed until June 2016 at the Department of Nephrology and Endocrinology of Shenzhen Second People's Hospital. The patients were followed every 3 mo for at least 3 mo until study endpoint or deadline. The deadline for the study was June 30, 2016. Patients with moderate to severe valvular disease, atrial fibrillation, other severe arrhythmias, congenital heart disease, or primary myocardial disease were excluded. The patients who had missing data for the admission hemoglobin levels and the composite endpoint were also excluded.

By using the database from the Shenzhen Second People's Hospital, general clinical data, including age, gender, duration of T2DM, history of hypertension, use of angiotensin-converting enzyme inhibitors (ACEI) and/or angiotensin receptor

Grade D (Fair): 0
Grade E (Poor): 0

Received: February 5, 2021

Peer-review started: February 5, 2021

First decision: March 30, 2021

Revised: April 18, 2021

Accepted: October 11, 2021

Article in press: October 11, 2021

Published online: November 15, 2021

P-Reviewer: Haile K

S-Editor: Fan JR

L-Editor: Wang TQ

P-Editor: Wang LYT



blockers (ARB), body mass index (BMI; kg/m²), systolic blood pressure (SBP), and diastolic blood pressure (DBP), were recorded. Laboratory evaluations included fasting glycaemia, glycosylated hemoglobin (HbA1c), serum creatinine (Scr), 24-h urinary protein, hemoglobin, serum albumin (ALB), serum uric acid, blood urea nitrogen, total cholesterol (TC), and triglycerides (TG). All these laboratory tests were performed and checked at the Central Laboratory of Shenzhen Second People's Hospital. The blood and urine samples were collected when patients were on admission. And the blood samples were fasting venous blood. Urine samples were collected in one or more containers over a period of 24 h. Reagent based method and automated analyzer were used to measure these laboratory variables. The eGFR was calculated using the CKD epidemiology collaboration equation[9]. The stages of CKD were classified as follows[10]: Stage 1, kidney damage with normal or increased eGFR (> 90 mL/min/1.73 m²); stage 2, mild reduction in eGFR (60-89 mL/min/1.73 m²); stage 3, moderate reduction in eGFR (30-59 mL/min/1.73 m²); stage 4, severe reduction in eGFR (15-29 mL/min/1.73 m²); stage 5, kidney failure (eGFR < 15 mL/min/1.73 m² or dialysis). Our focus was to understand the effect of hemoglobin on the composite endpoint.

Follow-up and endpoint

The patients were followed every 3 mo for at least 3 mo until June 2016. The composite endpoint was end-stage renal disease or a 50% reduction in the eGFR.

Statistical analysis

The Shapiro–Wilk test was used to test the normality of the data. Continuous variables are expressed as the mean ± SD (normal distribution) or median (quartiles) (skewed distribution), and categorical variables are expressed as frequencies or percentages. One-way ANOVA (normal distribution), Kruskal-Wallis H (skewed distribution) test, and chi-square test (categorical variables) were used to determine any significant differences between the means and proportions of the groups. The effects of hemoglobin levels on the composite endpoint were evaluated using Cox proportional hazards regression without adjustment and with adjustment for confounding variables. Hazard ratios (HRs) were reported per g/dL increment of hemoglobin levels (g/dL). Incremental models were fitted adjusting for (model 1) demographic factors (age, gender, and BMI); (model 2) demographic and traditional renal function risk factors (baseline eGFR, history of hypertension, SBP, DBP, 24-h urinary protein, ACEI and/or ARB use, and ALB); (model 3) demographic factors, traditional risk factors, and lipids (TC and TG); and (model 4) demographic factors, traditional risk factors, lipids, and glycaemia control (duration of diabetes, fasting glycaemia, and HbA1c). Kaplan–Meier plots were generated using tertiles of hemoglobin data to illustrate findings. A smoothing spline curve was used to describe the adjusted relationship between hemoglobin levels and the composite endpoint. Two-tailed probability values of < 0.05 were considered to indicate statistical significance. All statistical analyses were performed using Empowerstats (www.empowerstats.com) and R software (<http://www.R-project.org>).

Declarations

The proposal was approved by the Clinical Research Ethical Committee of the Shenzhen Second People's Hospital, and all subjects provided informed consent before enrollment. We adhered to the principles of the Declaration of Helsinki. The procedures followed were in accordance with institutional guidelines.

RESULTS

Association of hemoglobin levels with demographic and clinical factors

The average hemoglobin for the whole sample was 12.77 ± 2.42 g/dL. The distribution of hemoglobin levels in the full cohort is shown in [Figure 1](#). We categorized the admission hemoglobin levels into tertiles to analyze. The cut-points for the tertile 1 (T1), tertile 2 (T2), and tertile 3 (T3) were < 11.97, 11.97- < 13.90, and 13.90- < 19.40, respectively. The baseline characteristics of study participants by hemoglobin tertiles are presented in [Table 1](#). There were significant associations of higher hemoglobin with decreasing age, duration of diabetes, SBP, BUN, potassium, phosphate, HbA1c, 24-h urinary protein, and less history of hypertension. Male sex, ACEI/ARB use, and higher BMI, eGFR, DBP, ALB, and fasting blood glucose were also associated with

Table 1 Baseline characteristics of study participants according to hemoglobin levels

Variable	Hemoglobin tertile- Total	Hemoglobin tertile- Tertile 1 (< 11.97)	Hemoglobin tertile- Tertile 2 (11.97-< 13.90)	Hemoglobin tertile- Tertile 3 (13.90-< 19.40)	P value
Male, <i>n</i> (%)	166 (62.64)	34 (38.64)	49 (59.04)	83 (88.30)	< 0.001
Female, <i>n</i> (%)	99 (37.36)	54 (61.36)	34 (40.96)	11(11.70)	< 0.001
Age, years	58.08 ± 12.37	61.67 ± 11.89	59.23 ± 10.35	53.69 ± 13.22	< 0.001
BMI, kg/m ²	25.18 ± 3.22	24.55 ± 3.40	24.94 ± 2.97	25.98 ± 3.10	0.010
Duration of diabetes, months	33.54 ± 63.81	47.14 ± 79.51	37.60 ± 66.98	17.22 ± 35.07	0.005
eGFR, mL/min per 1.73 m ²	90.88 ± 46.71	60.63 ± 47.85	95.80 ± 41.82	114.85 ± 32.26	< 0.001
History of hypertension	171 (64.53%)	64 (72.73%)	57 (68.67%)	50 (53.19%)	0.014
SBP, mmHg	141.78 ± 23.10	148.42 ± 26.85	141.14 ± 22.07	136.12 ± 18.33	0.001
DBP, mmHg	79.11 ± 12.51	75.66 ± 13.83	79.69 ± 10.50	81.84 ± 12.21	0.003
ALB, g/L	39.54 ± 5.59	35.98 ± 5.61	40.03 ± 5.20	42.46 ± 3.80	< 0.001
BUN, mmol/L	7.47 ± 6.24	9.79 ± 5.99	7.61 ± 8.49	5.15 ± 1.73	< 0.001
SUA, μmol/L	401.18 ± 250.95	449.22 ± 403.60	384.23 ± 106.65	370.82 ± 109.02	0.085
Potassium, mmol/L	4.30 ± 1.00	4.55 ± 1.26	4.31 ± 1.04	4.05 ± 0.50	0.003
Total calcium, mmol/L	2.31 ± 0.47	2.28 ± 0.56	2.35 ± 0.49	2.30 ± 0.34	0.619
Phosphate, mmol/L	1.25 ± 0.31	1.32 ± 0.34	1.28 ± 0.32	1.16 ± 0.24	0.002
Fasting glycaemia, mmol/L	7.95 ± 3.26	7.30 ± 3.09	7.65 ± 3.30	8.83 ± 3.22	0.004
HbA1c, %	11.40 ± 28.88	15.10 ± 49.59	10.22 ± 12.89	9.21 ± 2.13	0.015
TG, mmol/L	2.00 ± 1.71	1.83 ± 1.50	1.69 ± 1.24	2.41 ± 2.12	0.014
TC, mmol/L	4.52 ± 2.28	4.45 ± 1.53	4.70 ± 3.64	4.42 ± 0.96	0.703
24-h urinary protein, mg/d	1179.17 ± 2346.72	2345.71 ± 3176.33	966.77 ± 2086.06	274.63 ± 450.60	< 0.001
ACEI/ARB use, <i>n</i> (%)	228 (86.04)	58 (65.91)	77 (92.77)	93 (98.94)	< 0.001
CKD stage, <i>n</i> (%)					< 0.001
1	148 (55.85)	23 (26.14)	51 (61.45)	74 (78.72)	
2	41 (15.47)	10 (11.36)	14 (16.87)	17 (18.09)	
3	38 (14.34)	25 (28.41)	12 (14.46)	1 (1.06)	
4	19 (7.17)	13 (14.77)	4 (4.82)	2 (2.13)	
5	19 (7.17)	17 (19.32)	2 (2.41)	0 (0.00)	

Continuous variables are presented as the mean (SD) or median (IQR), and categorical variables are presented as the number (percentage). BMI: Body mass index; eGFR: Estimated glomerular filtration rate; SBP: Systolic blood pressure; DBP: Diastolic blood pressure; ALB: Serum albumin; BUN: Blood urea nitrogen; SUA: Serum uric acid; TC: Total cholesterol; TG: Triglycerides; ACEI: Angiotensin-converting enzyme inhibitors; ARB: Angiotensin receptor blockers; CKD: Chronic kidney disease.

higher hemoglobin.

Association between hemoglobin levels and the composite endpoint

During the follow-up period of 15.19 ± 9.33 mo, a total of 52 participants experienced the composite endpoint. Study entry hemoglobin levels independently and inversely correlated with the risk of the composite endpoint (HR: 0.74, *P* = 0.0012) in the model adjusted for demographic factors and known risk factors. The composite endpoint remained significant (HR: 0.65, *P* = 0.0055) after further adjustment for lipids and glycaemia control (Figure 2).

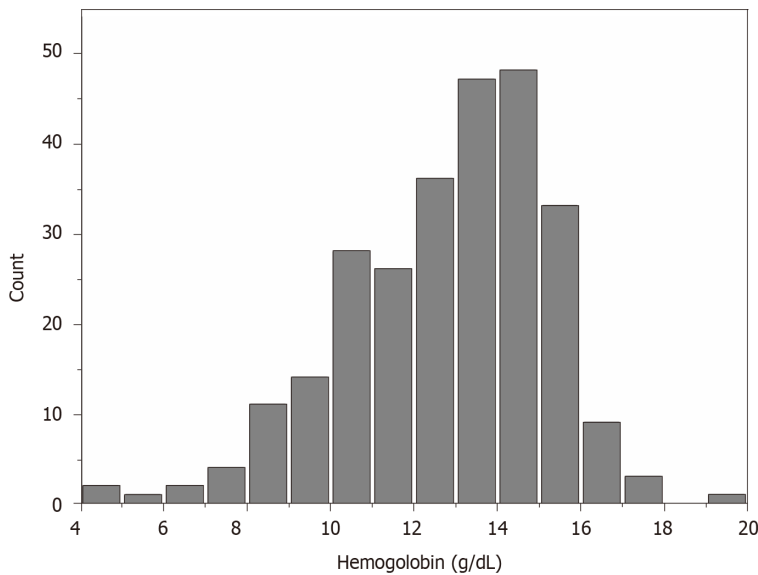


Figure 1 Distribution of hemoglobin levels in the study sample.

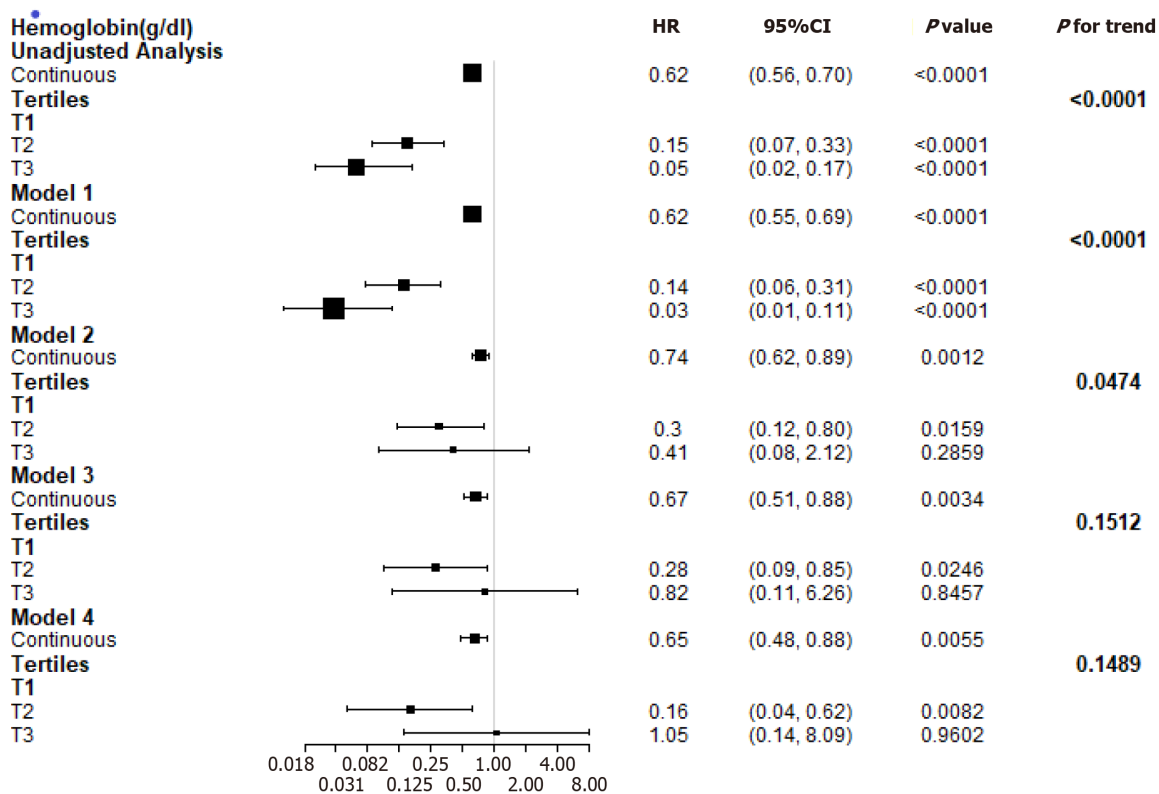


Figure 2 Estimated hazard ratio for the composite endpoint associated with hemoglobin in different models. Model 1: Demographic factors (age, gender, and body mass index); model 2: Demographic factors and traditional renal function risk factors (baseline estimated glomerular filtration rate, history of hypertension, systolic blood pressure, diastolic blood pressure, 24-h urinary protein, angiotensin-converting enzyme inhibitors and/or angiotensin receptor blockers use, and albumin); model 3: Demographic factors, traditional risk factors, and lipids (total cholesterol and triglycerides); model 4: Demographic factors, traditional risk factors, lipids, and glycaemia control (duration of diabetes, fasting glycaemia, and glycosylated hemoglobin). HR: Hazard ratio; CI: Confidence interval.

Figure 2 presents multivariable-adjusted HRs for the composite endpoint according to a 1 g/dL increase in the hemoglobin levels. The adjusted HR for the highest and middle tertiles compared to the lowest tertile of hemoglobin was 0.82 ($P = 0.8457$) and 0.28 ($P = 0.0246$), respectively, in the adjusted model (demographic factors, traditional risk factors, TC, and triglycerides). However, after further adjustment for the duration of diabetes, fasting glycaemia, and HbA1c, hemoglobin was positively related to the risk of the composite endpoint (HR: 1.05, $P = 0.9602$) when the highest tertile was

compared to the lowest tertile of hemoglobin.

Figure 3 shows a U-shaped exposure-response relationship between admission hemoglobin levels and the composite endpoint after adjusting for age, gender, BMI, baseline eGFR, history of hypertension, SBP, DBP, 24-h urinary protein, ACEI and/or ARB use, ALB, TC, TG, duration of diabetes, fasting glycaemia, and HbA1c. The curve tended to reach the lowest level at an optimal hemoglobin level (approximately 13.3 g/dL). A higher admission hemoglobin level (hemoglobin < 13.3 g/dL) was associated with a lower risk of the composite endpoint (HR: 0.58, $P = 0.0007$). However, when hemoglobin was > 13.3 g/dL, the adjusted HR was 1.63 ($P = 0.1585$). Details are shown in Table 2.

Kaplan-Meier curves show that patients within the upper tertiles of hemoglobin had a lower cumulative incidence of the composite endpoint (Figure 4).

Stratified analysis of the composite endpoint incidence

We performed stratified analyses by age (< 60 *vs* ≥ 60 years), gender, BMI (< 24 *vs* ≥ 24 kg/m²), and ACEI/ARB use (yes *vs* no). In our cohort, the impact of hemoglobin on the composite endpoint was not affected by age, gender, BMI, or ACEI/ARB use during the follow-up period (P for all interactions > 0.05) (Figure 5).

DISCUSSION

In this retrospective observational study involving patients with T2DM, we observed the relationship between the admission hemoglobin levels and the composite endpoint. In the Cox regression model, high levels of hemoglobin were associated with a decreased risk of the composite endpoint after adjusting for age, gender, BMI, traditional risk factors, TC, and TG.

By stratifying the patients into subgroups, the results showed that the impacts of hemoglobin on the composite endpoint were not affected by age, gender, BMI, or ACEI/ARB use. Many studies also showed that low hemoglobin was associated with adverse clinical outcomes and poor life quality[11-13]. Shacham *et al*[14] analyzed 1248 patients diagnosed with ST-segment elevation myocardial infarction and demonstrated that a lower admission level of hemoglobin and anaemia were independent predictors of acute kidney injury. Dangas *et al*[15] showed that lower baseline hematocrit level was the most important independent predictor of contrast-induced nephropathy in CKD patients. An observational study included 788 patients with stages 3-5 CKD who underwent cardiac surgery and showed that preoperative anaemia was related to poor postoperative outcomes[16].

Although higher hemoglobin targets were suggested to reduce the requirement for transfusions and benefit patients' life quality[17-19], disadvantages were also been observed[7,20,21]. Several randomized controlled trials also showed that higher hemoglobin target levels were related to a higher risk of adverse outcomes[22-24]. In this study, after adjusting for the duration of diabetes, fasting glycaemia, and HbA1c, hemoglobin was positively related to the risk of the composite endpoint when the highest tertile was compared to the lowest tertile of hemoglobin. However, it is not statistically significant. We further performed a smooth spline curve and found a U-shaped exposure-response relationship between admission hemoglobin levels and the composite endpoint. The curve tended to reach the lowest level at an optimal hemoglobin level (approximately 13.3 g/dL). For the optimal hemoglobin level, lower and higher hemoglobin concentrations were related to higher rates of poor prognosis [25,26].

Furthermore, two large randomized controlled trials[24,27] showed no benefits of a higher hemoglobin target on cardiovascular events or death or found an increased rate of adverse events. Holst *et al*[28] found that patients assigned to blood transfusion at a higher hemoglobin threshold and at a lower threshold were similar on mortality at 90 d and risks of ischaemic events. Higher hemoglobin level patients had no benefit.

There are several explanations for the relationship between admission hemoglobin levels and the deterioration of renal function. Lower hemoglobin levels might decrease oxygen delivery and cause renal medullary hypoxia. The outer medullary region has high metabolic activity and low prevailing oxygen tension, so it is susceptible to ischaemic injury[29]. Angiotensin II is supposed to be a possible reason for tissue hypoxia during early CKD. The activated renin-angiotensin system induces tubular sodium reabsorption and vasoconstriction, so it results in higher oxygen consumption and relative tubular hypoxia[30-32]. However, an excessive hemoglobin level can result in increased blood viscosity and elevated blood pressure. Therefore, there is a U-

Table 2 Threshold effect analysis of hemoglobin levels on the composite endpoint using piecewise linear regression

Cutoff point of hemoglobin level (K)	Hazard ratio (95%CI) ¹	P value
< 13.3 g/dL	0.58 (0.42-0.79)	0.0007
≥ 13.3 g/dL	1.63 (0.83-3.20)	0.1585

¹Adjusted for (model 4): Age, gender, body mass index, baseline estimated glomerular filtration rate, history of hypertension, systolic blood pressure, diastolic blood pressure, 24-h urinary protein, angiotensin-converting enzyme inhibitors and/or angiotensin receptor blockers use, albumin, total cholesterol, triglycerides, duration of diabetes, fasting glycaemia, and glycosylated hemoglobin.

A 13.3 g/dL threshold for the hemoglobin level existed for risk of the composite endpoint.

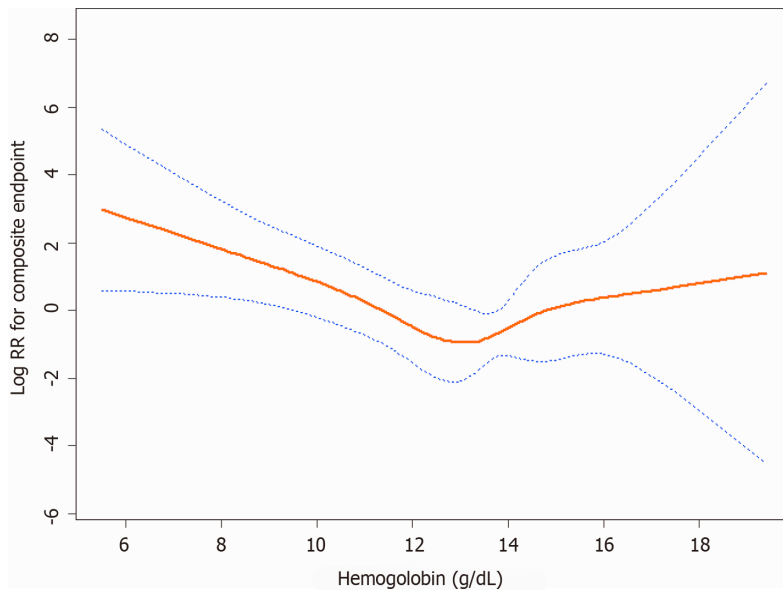


Figure 3 A U-shaped relationship was observed between hemoglobin levels and the composite endpoint. The curve tended to reach the lowest level at an optimal hemoglobin level (approximately 13.3 g/dL). The red line denotes fitted curves, and the blue lines represent 95%CI for the association between hemoglobin levels and the composite endpoint. Adjusted for (model 4): Age, gender, body mass index, baseline estimated glomerular filtration rate, history of hypertension, systolic blood pressure, diastolic blood pressure, 24 h urinary protein, angiotensin-converting enzyme inhibitors and/or angiotensin receptor blockers use, albumin, total cholesterol, triglycerides, duration of diabetes, fasting glycaemia, and glycosylated hemoglobin.

shaped exposure-response relationship between hemoglobin levels and the composite endpoint. In our study, approximately 13.3 g/dL is an optimal hemoglobin level.

We acknowledge that there are several limitations to our study. First, this was a single-center, retrospective, nonrandomized trial. It was based on observational data, and many known or unknown confounding factors may exist, even though we attempted to adjust for confounding factors. Second, we used Scr to estimate GFR. As tubular secretion of creatinine and the variability in creatinine generation between individuals and for the same individual, the use of creatinine to estimate GFR has some limitations[33]. The eGFR can be validated by serum cystatin C or 51Cr-EDTA GFR, but these tools were not available in our study. Third, there were indeed fewer outcomes among patients with a higher Hb. Thus, the CIs around the estimates for the composite outcome in Figure 3 are very wide above an Hb >13 g/dL. The reason may be that this is a small-sized study. Fourth, this was only a single-center study, and whether these observations can be extended to whole Chinese and non-Chinese T2DM patients remains to be determined.

CONCLUSION

In brief, the results of this study demonstrated that among patients with T2DM, a U-shaped exposure-response relationship exists between admission hemoglobin levels and the composite endpoint. In our study, approximately 13.3 g/dL is an optimal hemoglobin level. A lower admission hemoglobin level (hemoglobin < 13.3 g/dL) is an

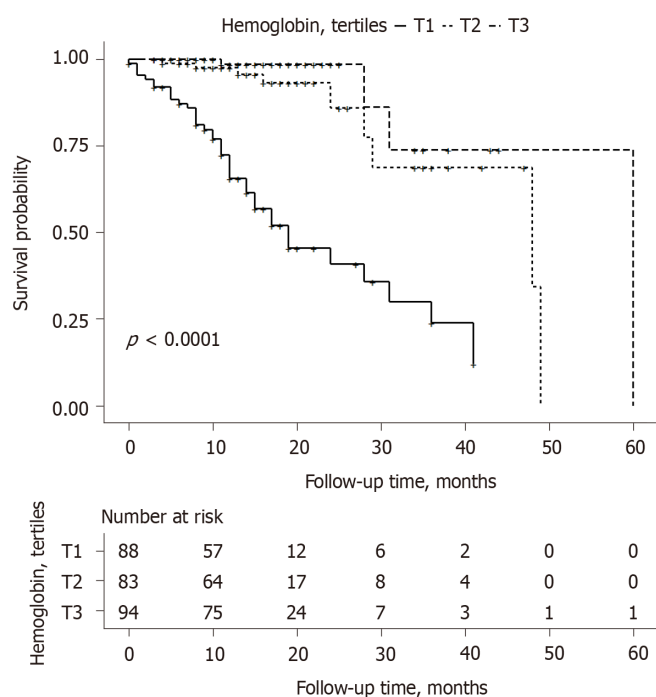


Figure 4 Kaplan–Meier curves according to hemoglobin tertiles.

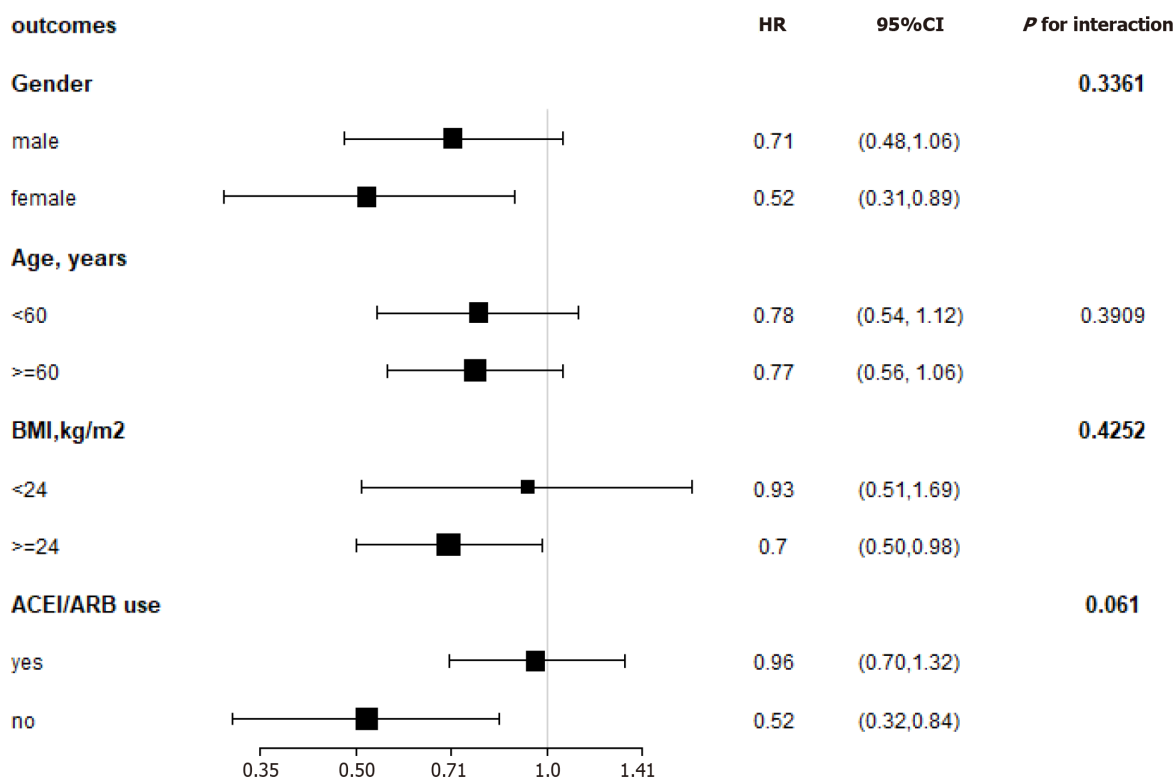


Figure 5 Subgroup analysis of hemoglobin and the composite endpoint. Adjusted for the baseline estimated glomerular filtration rate, systolic blood pressure, diastolic blood pressure, 24-h urinary protein, albumin, total cholesterol, triglycerides, duration of diabetes, fasting glycaemia, and glycosylated hemoglobin. BMI: Body mass index; ACEI: Angiotensin-converting enzyme inhibitors; ARB: Angiotensin receptor blockers; HR: Hazard ratios.

independent predictor of the composite endpoint. These findings have important clinical and public health implications. As hemoglobin is a common and easily available measurement in clinical activity, it is a convenient and feasible way to identify those patients who are at high risk of developing the composite endpoint and have a poor prognosis.

ARTICLE HIGHLIGHTS

Research background

Information on the association of hemoglobin with renal damage is uncertain, and the optimal hemoglobin target remains controversial.

Research motivation

The admission hemoglobin levels would influence the prognosis in patients with type 2 diabetes mellitus (T2DM).

Research objectives

To evaluate the relationships between admission hemoglobin levels and prognosis in patients with T2DM

Research methods

A total of 265 patients with T2DM were included to perform a retrospective analysis. The general information and biochemical indices of these patients were statistically analyzed.

Research results

We found a U-shaped relationship between hemoglobin levels and the composite endpoint. The curve tended to reach the lowest level at an optimal hemoglobin level.

Research conclusions

There is a U-shaped relationship between hemoglobin levels and renal damage in these patients.

Research perspectives

We used a retrospective study to evaluate the relationships between admission hemoglobin levels and prognosis in patients with T2DM.

REFERENCES

- 1 **McFarlane SI**, Chen SC, Whaley-Connell AT, Sowers JR, Vassalotti JA, Salifu MO, Li S, Wang C, Bakris G, McCullough PA, Collins AJ, Norris KC; Kidney Early Evaluation Program Investigators. Prevalence and associations of anemia of CKD: Kidney Early Evaluation Program (KEEP) and National Health and Nutrition Examination Survey (NHANES) 1999-2004. *Am J Kidney Dis* 2008; **51**: S46-S55 [PMID: [18359408](#) DOI: [10.1053/j.ajkd.2007.12.019](#)]
- 2 **Covic A**, Jackson J, Hadfield A, Pike J, Siriopol D. Real-World Impact of Cardiovascular Disease and Anemia on Quality of Life and Productivity in Patients with Non-Dialysis-Dependent Chronic Kidney Disease. *Adv Ther* 2017; **34**: 1662-1672 [PMID: [28578500](#) DOI: [10.1007/s12325-017-0566-z](#)]
- 3 **Kleine CE**, Soohoo M, Ranasinghe ON, Park C, Marroquin MV, Obi Y, Rhee CM, Moradi H, Kovesdy CP, Kalantar-Zadeh K, Streja E. Association of Pre-End-Stage Renal Disease Hemoglobin with Early Dialysis Outcomes. *Am J Nephrol* 2018; **47**: 333-342 [PMID: [29779027](#) DOI: [10.1159/000489223](#)]
- 4 **Wetmore JB**, Li S, Yan H, Xu H, Peng Y, Sinsakul MV, Liu J, Gilbertson DT. Predialysis anemia management and outcomes following dialysis initiation: A retrospective cohort analysis. *PLoS One* 2018; **13**: e0203767 [PMID: [30256836](#) DOI: [10.1371/journal.pone.0203767](#)]
- 5 **Akizawa T**, Saito A, Gejyo F, Suzuki M, Nishizawa Y, Tomino Y, Tsubakihara Y, Akiba T, Hirakata H, Watanabe Y, Kawanishi H, Bessho M, Udagawa Y, Aoki K, Uemura Y, Ohashi Y; JET Study Group. Low hemoglobin levels and hypo-responsiveness to erythropoiesis-stimulating agent associated with poor survival in incident Japanese hemodialysis patients. *Ther Apher Dial* 2014; **18**: 404-413 [PMID: [24571446](#) DOI: [10.1111/1744-9987.12155](#)]
- 6 **Parfrey PS**, Foley RN, Wittreich BH, Sullivan DJ, Zagari MJ, Frei D. Double-blind comparison of full and partial anemia correction in incident hemodialysis patients without symptomatic heart disease. *J Am Soc Nephrol* 2005; **16**: 2180-2189 [PMID: [15901766](#) DOI: [10.1681/ASN.2004121039](#)]
- 7 **Coyne DW**. The health-related quality of life was not improved by targeting higher hemoglobin in the Normal Hematocrit Trial. *Kidney Int* 2012; **82**: 235-241 [PMID: [22437411](#) DOI: [10.1038/ki.2012.76](#)]
- 8 **Song H**, Hu H, Liao D, Wei J, Wei C, Liao F, Zhou W, Mo Z, Jiang S, Ruan X, He Y. Left ventricular hypertrophy predicts the decline of glomerular filtration rate in patients with type 2 diabetes mellitus. *Int Urol Nephrol* 2018; **50**: 2049-2059 [PMID: [30073617](#) DOI: [10.1007/s11255-018-1942-6](#)]
- 9 **Levey AS**, Bosch JP, Lewis JB, Greene T, Rogers N, Roth D. A more accurate method to estimate glomerular filtration rate from serum creatinine: a new prediction equation. Modification of Diet in

- Renal Disease Study Group. *Ann Intern Med* 1999; **130**: 461-470 [PMID: [10075613](#) DOI: [10.7326/0003-4819-130-6-199903160-00002](#)]
- 10 **Inker LA**, Astor BC, Fox CH, Isakova T, Lash JP, Peralta CA, Kurella Tamura M, Feldman HI. KDOQI US commentary on the 2012 KDIGO clinical practice guideline for the evaluation and management of CKD. *Am J Kidney Dis* 2014; **63**: 713-735 [PMID: [24647050](#) DOI: [10.1053/j.ajkd.2014.01.416](#)]
 - 11 **Barrett BJ**, Fenton SS, Ferguson B, Halligan P, Langlois S, Mccready WG, Muirhead N, Weir RV. Clinical practice guidelines for the management of anemia coexistent with chronic renal failure. Canadian Society of Nephrology. *J Am Soc Nephrol* 1999; **10** Suppl 13: S292-S296 [PMID: [10425612](#)]
 - 12 **Yotsueda R**, Tanaka S, Taniguchi M, Fujisaki K, Torisu K, Masutani K, Hirakata H, Kitazono T, Tsuruya K. Hemoglobin concentration and the risk of hemorrhagic and ischemic stroke in patients undergoing hemodialysis: the Q-cohort study. *Nephrol Dial Transplant* 2018; **33**: 856-864 [PMID: [29237088](#) DOI: [10.1093/ndt/gfx305](#)]
 - 13 **He J**, Shlipak M, Anderson A, Roy JA, Feldman HI, Kallem RR, Kanthety R, Kusek JW, Ojo A, Rahman M, Ricardo AC, Soliman EZ, Wolf M, Zhang X, Raj D, Hamm L; CRIC (Chronic Renal Insufficiency Cohort) Investigators. Risk Factors for Heart Failure in Patients With Chronic Kidney Disease: The CRIC (Chronic Renal Insufficiency Cohort) Study. *J Am Heart Assoc* 2017; **6** [PMID: [28515118](#) DOI: [10.1161/JAHA.116.005336](#)]
 - 14 **Shacham Y**, Gal-Oz A, Leshem-Rubinow E, Arbel Y, Flint N, Keren G, Roth A, Steinvil A. Association of admission hemoglobin levels and acute kidney injury among myocardial infarction patients treated with primary percutaneous intervention. *Can J Cardiol* 2015; **31**: 50-55 [PMID: [25547550](#) DOI: [10.1016/j.cjca.2014.11.001](#)]
 - 15 **Dangas G**, Iakovou I, Nikolsky E, Aymong ED, Mintz GS, Kipshidze NN, Lansky AJ, Moussa I, Stone GW, Moses JW, Leon MB, Mehran R. Contrast-induced nephropathy after percutaneous coronary interventions in relation to chronic kidney disease and hemodynamic variables. *Am J Cardiol* 2005; **95**: 13-19 [PMID: [15619387](#) DOI: [10.1016/j.amjcard.2004.08.056](#)]
 - 16 **Shavit L**, Hitti S, Silberman S, Tauber R, Merin O, Lifschitz M, Slotki I, Bitran D, Fink D. Preoperative hemoglobin and outcomes in patients with CKD undergoing cardiac surgery. *Clin J Am Soc Nephrol* 2014; **9**: 1536-1544 [PMID: [24993450](#) DOI: [10.2215/CJN.00110114](#)]
 - 17 **Palmer SC**, Navaneethan SD, Craig JC, Johnson DW, Tonelli M, Garg AX, Pellegrini F, Ravani P, Jardine M, Perkovic V, Graziano G, McGee R, Nicolucci A, Tognoni G, Strippoli GF. Meta-analysis: erythropoiesis-stimulating agents in patients with chronic kidney disease. *Ann Intern Med* 2010; **153**: 23-33 [PMID: [20439566](#) DOI: [10.7326/0003-4819-153-1-201007060-00252](#)]
 - 18 **Foley RN**, Curtis BM, Parfrey PS. Hemoglobin targets and blood transfusions in hemodialysis patients without symptomatic cardiac disease receiving erythropoietin therapy. *Clin J Am Soc Nephrol* 2008; **3**: 1669-1675 [PMID: [18922988](#) DOI: [10.2215/CJN.02100508](#)]
 - 19 **Foley RN**, Curtis BM, Parfrey PS. Erythropoietin therapy, hemoglobin targets, and quality of life in healthy hemodialysis patients: a randomized trial. *Clin J Am Soc Nephrol* 2009; **4**: 726-733 [PMID: [19339412](#) DOI: [10.2215/CJN.04950908](#)]
 - 20 Corrigendum to: "Surgery for Degenerative Cervical Myelopathy: A Nationwide Registry-Based Observational Study With Patient-Reported Outcomes" by Sasha Gulati, MD, PhD, Vetle Vangen-Lønne, MS, Øystein P Nygaard, MD, PhD, Agnete M Gulati, MD, PhD, Tommy A Hammer, MD, Tonje O Johansen, MD, Wilco C Peul, MD, PhD, Øyvind O Salvesen, MSc, PhD, Tore K Solberg, MD, PhD. *Neurosurgery*, nyab259, <https://doi.org/10.1093/neuros/nyab259>. *Neurosurgery* 2021; **89**: 943 [PMID: [34432876](#) DOI: [10.1093/neuros/nyab334](#)]
 - 21 **Clement FM**, Klarenbach S, Tonelli M, Johnson JA, Manns BJ. The impact of selecting a high hemoglobin target level on health-related quality of life for patients with chronic kidney disease: a systematic review and meta-analysis. *Arch Intern Med* 2009; **169**: 1104-1112 [PMID: [19546410](#) DOI: [10.1001/archinternmed.2009.112](#)]
 - 22 **Drüeke TB**, Locatelli F, Clyne N, Eckardt KU, Macdougall IC, Tsakiris D, Burger HU, Scherhag A; CREATE Investigators. Normalization of hemoglobin level in patients with chronic kidney disease and anemia. *N Engl J Med* 2006; **355**: 2071-2084 [PMID: [17108342](#) DOI: [10.1056/NEJMoa062276](#)]
 - 23 **Lee YK**, Kim SG, Seo JW, Oh JE, Yoon JW, Koo JR, Kim HJ, Noh JW. A comparison between once-weekly and twice- or thrice-weekly subcutaneous injection of epoetin alfa: results from a randomized controlled multicentre study. *Nephrol Dial Transplant* 2008; **23**: 3240-3246 [PMID: [18469158](#) DOI: [10.1093/ndt/gfn255](#)]
 - 24 **Pfeffer MA**, Burdmann EA, Chen CY, Cooper ME, de Zeeuw D, Eckardt KU, Feyzi JM, Ivanovich P, Kewalramani R, Levey AS, Lewis EF, McGill JB, McMurray JJ, Parfrey P, Parving HH, Remuzzi G, Singh AK, Solomon SD, Toto R; TREAT Investigators. A trial of darbepoetin alfa in type 2 diabetes and chronic kidney disease. *N Engl J Med* 2009; **361**: 2019-2032 [PMID: [19880844](#) DOI: [10.1056/NEJMoa0907845](#)]
 - 25 **Panwar B**, Judd SE, Warnock DG, McClellan WM, Booth JN 3rd, Muntner P, Gutiérrez OM. Hemoglobin Concentration and Risk of Incident Stroke in Community-Living Adults. *Stroke* 2016; **47**: 2017-2024 [PMID: [27382006](#) DOI: [10.1161/STROKEAHA.116.013077](#)]
 - 26 **Jung MY**, Hwang SY, Hong YA, Oh SY, Seo JH, Lee YM, Park SW, Kim JS, Wang JK, Kim JY, Lee JE, Ko GJ, Pyo HJ, Kwon YJ. Optimal hemoglobin level for anemia treatment in a cohort of hemodialysis patients. *Kidney Res Clin Pract* 2015; **34**: 20-27 [PMID: [26484015](#) DOI: [10.1016/j.krcp.2014.11.003](#)]

- 27 **Levin A.** Understanding recent haemoglobin trials in CKD: methods and lesson learned from CREATE and CHOIR. *Nephrol Dial Transplant* 2007; **22**: 309-312 [PMID: [17234670](#) DOI: [10.1093/ndt/gfl824](#)]
- 28 **Holst LB,** Haase N, Wetterslev J, Wernerman J, Guttormsen AB, Karlsson S, Johansson PI, Aneman A, Vang ML, Winding R, Nebrich L, Nibro HL, Rasmussen BS, Lauridsen JR, Nielsen JS, Oldner A, Pettilä V, Cronhjort MB, Andersen LH, Pedersen UG, Reiter N, Wiis J, White JO, Russell L, Thornberg KJ, Hjortrup PB, Müller RG, Möller MH, Steensen M, Tjäder I, Kilsand K, Odeberg-Wernerman S, Sjøbø B, Bundgaard H, Thyø MA, Lodahl D, Mærkedahl R, Albeck C, Illum D, Kruse M, Winkel P, Perner A; TRISS Trial Group; Scandinavian Critical Care Trials Group. Lower vs higher hemoglobin threshold for transfusion in septic shock. *N Engl J Med* 2014; **371**: 1381-1391 [PMID: [25270275](#) DOI: [10.1056/NEJMoa1406617](#)]
- 29 **Feldkamp T,** Kribben A. Contrast media induced nephropathy: definition, incidence, outcome, pathophysiology, risk factors and prevention. *Minerva Med* 2008; **99**: 177-196 [PMID: [18431326](#)]
- 30 **Peti-Peterdi J,** Harris RC. Macula densa sensing and signaling mechanisms of renin release. *J Am Soc Nephrol* 2010; **21**: 1093-1096 [PMID: [20360309](#) DOI: [10.1681/ASN.2009070759](#)]
- 31 **Emans TW,** Patinha D, Joles JA, Koeners MP, Janssen BJ, Krediet CTP. Angiotensin II-induced hypertension in rats is only transiently accompanied by lower renal oxygenation. *Sci Rep* 2018; **8**: 16342 [PMID: [30397212](#) DOI: [10.1038/s41598-018-34211-2](#)]
- 32 **Vlahakos DV,** Marathias KP, Madias NE. The role of the renin-angiotensin system in the regulation of erythropoiesis. *Am J Kidney Dis* 2010; **56**: 558-565 [PMID: [20400218](#) DOI: [10.1053/j.ajkd.2009.12.042](#)]
- 33 **Ferguson MA,** Waikar SS. Established and emerging markers of kidney function. *Clin Chem* 2012; **58**: 680-689 [PMID: [22311920](#) DOI: [10.1373/clinchem.2011.167494](#)]



Published by **Baishideng Publishing Group Inc**
7041 Koll Center Parkway, Suite 160, Pleasanton, CA 94566, USA

Telephone: +1-925-3991568

E-mail: bpgoffice@wjgnet.com

Help Desk: <https://www.f6publishing.com/helpdesk>

<https://www.wjgnet.com>

