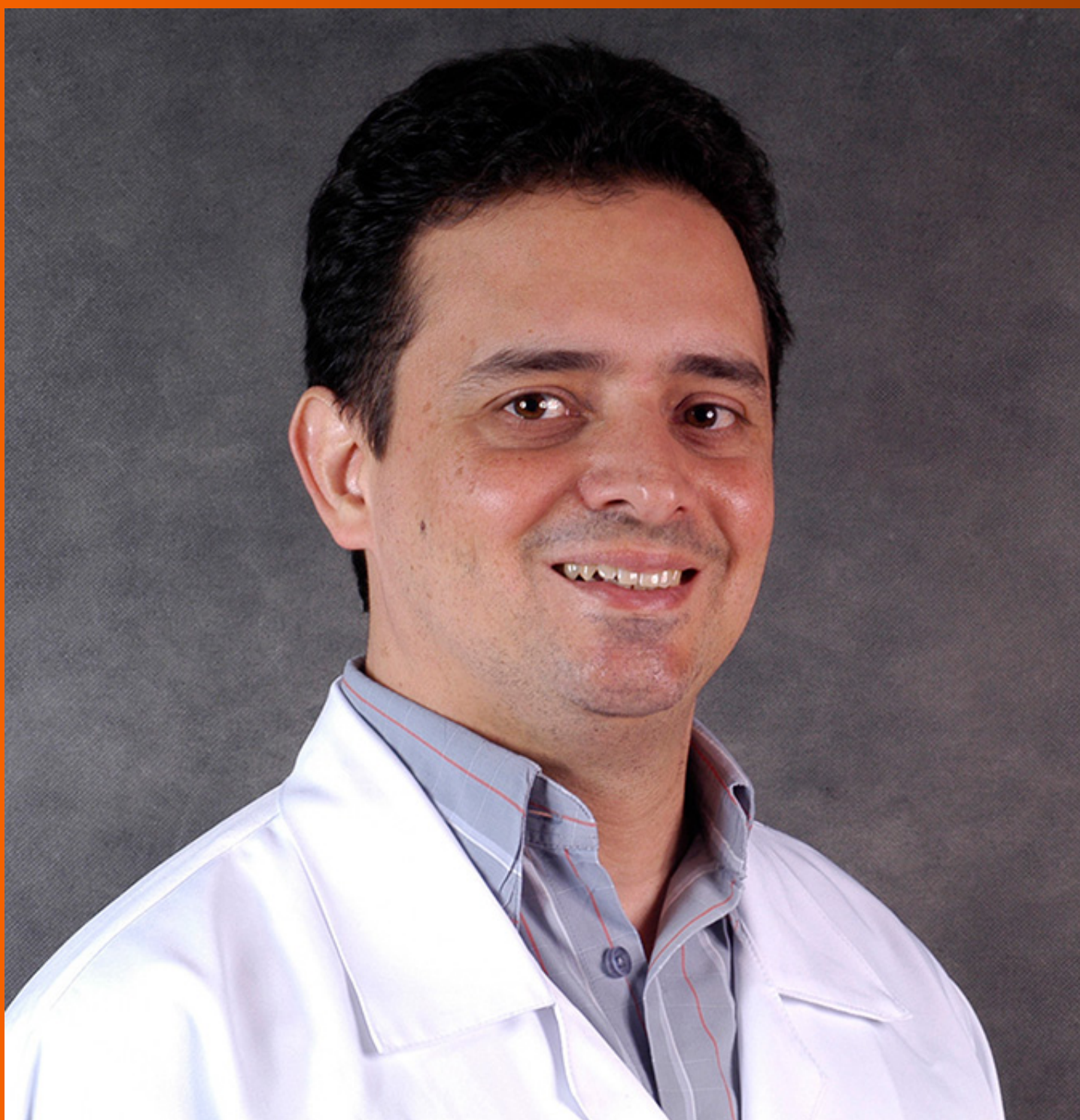


World Journal of *Diabetes*

World J Diabetes 2023 May 15; 14(5): 447-631



REVIEW

- 447 Inter-relationships between gastric emptying and glycaemia: Implications for clinical practice
Arunachala Murthy T, Chapman M, Jones KL, Horowitz M, Marathe CS
- 460 Early diabetic kidney disease: Focus on the glycocalyx
Yu H, Song YY, Li XH
- 481 Diabetes mellitus type 2 as an underlying, comorbid or consequent state of mental disorders
Borovcanin MM, Vesic K, Petrovic I, Jovanovic IP, Mijailović NR
- 494 Mechanism of immune attack in the progression of obesity-related type 2 diabetes
Wang HW, Tang J, Sun L, Li Z, Deng M, Dai Z
- 512 Diabetes mellitus and atrial fibrillation-from pathophysiology to treatment
Leopoulou M, Theofilis P, Kordalis A, Papageorgiou N, Sagris M, Oikonomou E, Tousoulis D

MINIREVIEWS

- 528 What, why and how to monitor blood glucose in critically ill patients
Juneja D, Deepak D, Nasa P
- 539 Exercise interventions for patients with type 1 diabetes mellitus: A narrative review with practical recommendations
Martin-Rivera F, Maroto-Izquierdo S, García-López D, Alarcón-Gómez J
- 549 Diabetes and fatty liver: Involvement of incretin and its benefit for fatty liver management
Wibawa IDN, Mariadi IK, Somayana G, Krisnawardani Kumbara CIY, Sindhughosa DA
- 560 COVID-19 vaccination and diabetic ketoacidosis
Joob B, Wiwanitkit V
- 565 Exercise therapy for sarcopenia and diabetes
Lim ST, Kang S
- 573 Intermediate hyperglycemia in early pregnancy: A South Asian perspective
Punnose J, Sukhija K, Rijhwani RM
- 585 Association between metformin and vitamin B12 deficiency in patients with type 2 diabetes
Sayedali E, Yalin AE, Yalin S

ORIGINAL ARTICLE

Retrospective Study

- 594 Association of bone turnover biomarkers with severe intracranial and extracranial artery stenosis in type 2 diabetes mellitus patients

Si SC, Yang W, Luo HY, Ma YX, Zhao H, Liu J

Randomized Clinical Trial

- 606 Efficacy of multigrain supplementation in type 2 diabetes mellitus: A pilot study protocol for a randomized intervention trial

Mohd Ariffin NA, Mohd Sopian M, Lee LK

SYSTEMATIC REVIEWS

- 617 Cardiometabolic effects of breastfeeding on infants of diabetic mothers

Elbeltagi R, Al-Beltagi M, Saeed NK, Bediwy AS

ABOUT COVER

Editorial Board Member of *World Journal of Diabetes*, José Carnevalheira, MD, PhD, Associate Professor, Faculty of Medical Sciences, University of Campinas, Campinas 13083, São Paulo, Brazil. jbcc@g.unicamp.br

AIMS AND SCOPE

The primary aim of *World Journal of Diabetes* (*WJD*, *World J Diabetes*) is to provide scholars and readers from various fields of diabetes with a platform to publish high-quality basic and clinical research articles and communicate their research findings online.

WJD mainly publishes articles reporting research results and findings obtained in the field of diabetes and covering a wide range of topics including risk factors for diabetes, diabetes complications, experimental diabetes mellitus, type 1 diabetes mellitus, type 2 diabetes mellitus, gestational diabetes, diabetic angiopathies, diabetic cardiomyopathies, diabetic coma, diabetic ketoacidosis, diabetic nephropathies, diabetic neuropathies, Donohue syndrome, fetal macrosomia, and prediabetic state.

INDEXING/ABSTRACTING

The *WJD* is now abstracted and indexed in Science Citation Index Expanded (SCIE, also known as SciSearch®), Current Contents/Clinical Medicine, Journal Citation Reports/Science Edition, PubMed, PubMed Central, Reference Citation Analysis, China National Knowledge Infrastructure, China Science and Technology Journal Database, and Superstar Journals Database. The 2022 Edition of Journal Citation Reports® cites the 2021 impact factor (IF) for *WJD* as 4.560; IF without journal self cites: 4.450; 5-year IF: 5.370; Journal Citation Indicator: 0.62; Ranking: 62 among 146 journals in endocrinology and metabolism; and Quartile category: Q2.

RESPONSIBLE EDITORS FOR THIS ISSUE

Production Editor: *Yu-Xi Chen*; Production Department Director: *Xu Guo*; Editorial Office Director: *Jia-Ping Yan*.

NAME OF JOURNAL

World Journal of Diabetes

ISSN

ISSN 1948-9358 (online)

LAUNCH DATE

June 15, 2010

FREQUENCY

Monthly

EDITORS-IN-CHIEF

Lu Cai, Md. Shahidul Islam, Michael Horowitz

EDITORIAL BOARD MEMBERS

<https://www.wjnet.com/1948-9358/editorialboard.htm>

PUBLICATION DATE

May 15, 2023

COPYRIGHT

© 2023 Baishideng Publishing Group Inc

INSTRUCTIONS TO AUTHORS

<https://www.wjnet.com/bpg/gerinfo/204>

GUIDELINES FOR ETHICS DOCUMENTS

<https://www.wjnet.com/bpg/GerInfo/287>

GUIDELINES FOR NON-NATIVE SPEAKERS OF ENGLISH

<https://www.wjnet.com/bpg/gerinfo/240>

PUBLICATION ETHICS

<https://www.wjnet.com/bpg/GerInfo/288>

PUBLICATION MISCONDUCT

<https://www.wjnet.com/bpg/gerinfo/208>

ARTICLE PROCESSING CHARGE

<https://www.wjnet.com/bpg/gerinfo/242>

STEPS FOR SUBMITTING MANUSCRIPTS

<https://www.wjnet.com/bpg/GerInfo/239>

ONLINE SUBMISSION

<https://www.f6publishing.com>

Retrospective Study

Association of bone turnover biomarkers with severe intracranial and extracranial artery stenosis in type 2 diabetes mellitus patients

Si-Cong Si, Wei Yang, Hong-Yu Luo, Yi-Xin Ma, Huan Zhao, Jia Liu

Specialty type: Endocrinology and metabolism**Provenance and peer review:** Unsolicited article; Externally peer reviewed.**Peer-review model:** Single blind**Peer-review report's scientific quality classification**Grade A (Excellent): 0
Grade B (Very good): B, B
Grade C (Good): C
Grade D (Fair): 0
Grade E (Poor): 0**P-Reviewer:** Chen JT, Taiwan;
Corcillo A, United Kingdom; Yoon S, South Korea**Received:** February 28, 2023**Peer-review started:** February 28, 2023**First decision:** March 14, 2023**Revised:** March 20, 2023**Accepted:** April 12, 2023**Article in press:** April 12, 2023**Published online:** May 15, 2023**Si-Cong Si, Wei Yang, Hong-Yu Luo, Yi-Xin Ma, Huan Zhao, Jia Liu**, General Geriatric Department, Xuanwu Hospital of Capital Medical University, Beijing 100053, China**Corresponding author:** Wei Yang, MD, Chief Doctor, General Geriatric Department, Xuanwu Hospital of Capital Medical University, No. 45 Changchun Street, Xicheng District, Beijing 100053, China. yangw_79@163.com

Abstract

BACKGROUND

Intracranial and extracranial artery stenosis is associated with cerebral infarction. Vascular calcification and atherosclerosis are the main causes of stenosis and major risk factors for cardiovascular and cerebrovascular events in patients with type 2 diabetes mellitus (T2DM). Bone turnover biomarkers (BTMs) are associated with vascular calcification, atherosclerosis, glucose, and lipid metabolism.

AIM

To investigate the association of circulating BTM levels with severe intracranial and extracranial artery stenosis in patients with T2DM.

METHODS

For this cross-sectional study including 257 T2DM patients, levels of the BTMs serum osteocalcin (OC), C-terminal cross-linked telopeptide of type I collagen (CTX), and procollagen type I N-peptide were measured by electrical chemiluminescent immunoassay, and artery stenosis was assessed by color Doppler and transcranial Doppler. Patients were grouped according to the existence and location (intracranial *vs.* extracranial) of artery stenosis. Correlations between BTM levels, previous stroke, stenosis location, and glucose and lipid metabolism were analyzed.

RESULTS

T2DM patients with severe artery stenosis had a higher frequency of previous stroke and levels of all three tested BTMs (all $P < 0.05$) than patients without. Some differences in OC and CTX levels were observed according to the location of artery stenosis. Significant associations were also observed between BTM levels and some glucose and lipid homeostasis parameters. On multivariate logistic regression analysis, all BTMs were significant predictors of artery stenosis in T2DM patients with and without adjustment for confounding factors (all $P < 0.001$), and receiver operating characteristic curve analysis demonstrated the

ability of BTM levels to predict artery stenosis in T2DM patients.

CONCLUSION

BTM levels were found to be independent risk factors for severe intracranial and extracranial artery stenosis and were differentially associated with glucose and lipid metabolism in patients with T2DM. Therefore, BTMs may be promising biomarkers and potential therapeutic targets for artery stenosis.

Key Words: Bone turnover biomarkers; Type 2 diabetes mellitus; Osteocalcin; C-terminal cross-linked telopeptide of type I collagen; Procollagen type I N-peptide; Intracranial and extracranial artery stenosis

©The Author(s) 2023. Published by Baishideng Publishing Group Inc. All rights reserved.

Core Tip: The occurrence of cerebral infarction is associated with severe intracranial and extracranial artery stenosis; thus, this study aims to identify risk factors for severe intracranial and extracranial artery stenosis in patients with type 2 diabetes mellitus (T2DM) to prevent the occurrence of cerebral infarction. Our study found that Bone turnover biomarkers (BTMs) are associated with the risk of arterial stenosis, probably due to the relationship between BTMs and glucose and lipid metabolism disorders. Detection of BTMs in patients with T2DM may help reduce the occurrence of cardiovascular disease.

Citation: Si SC, Yang W, Luo HY, Ma YX, Zhao H, Liu J. Association of bone turnover biomarkers with severe intracranial and extracranial artery stenosis in type 2 diabetes mellitus patients. *World J Diabetes* 2023; 14(5): 594-605

URL: <https://www.wjgnet.com/1948-9358/full/v14/i5/594.htm>

DOI: <https://dx.doi.org/10.4239/wjd.v14.i5.594>

INTRODUCTION

Intracranial and extracranial artery stenosis is an established predictor of cerebral infarction[1]. Therefore, a clear understanding of risk factors for intracranial and extracranial artery stenosis is important for the prevention of cerebrovascular events. Atherosclerosis is a critical stage of arterial stenosis, and abnormal bone metabolism is associated with the development of atherosclerosis[2]. Vascular calcification is one of the pathologic mechanisms of atherogenesis, and it is a programmed form of osteogenesis that is induced by inflammatory cytokines in blood vessels. The pathological process involves the trans-differentiation of vascular smooth muscle cells into osteoblasts, which are then associated with the activation of vascular osteogenesis, enhanced bone turnover, and abnormal mineral metabolism.

Atherosclerotic calcification is an independent predictor of the mortality and morbidity of cardiovascular and cerebrovascular diseases[3]. The extent and severity of vascular calcification are a reflection of the atherosclerotic plaque burden, and as an outcome of atherosclerosis, vascular calcification causes vascular sclerosis and dysfunction and is accepted as the basic pathological process in many cardiovascular diseases[4]. Vascular calcification is an active and regulated process with similarities to bone formation and is mediated by many of the same processes that promote bone formation[5]. Calcification of atherosclerotic plaques is considered a complex physiological process mediated by both inhibitor and promoter interactions, including between osteoclast- and osteoblast-like arterial cells. Plaque calcification is an important factor in plaque instability, which is conducive to plaque rupture and thrombosis. Accordingly, it is a predictor of future cardiovascular events.

Research shows that patients with type 2 diabetes mellitus (T2DM) who experience a transient ischemic attack or an anterior circulation ischemic stroke are more likely to have a lipid-rich necrotic core and vascular plaques with calcification, and the biological processes of bone formation and calcified atherosclerotic plaque share many common features in patients with T2DM[6]. Additionally, vascular calcification is considered a major risk factor for T2DM and is always associated with cardiovascular complications.

Bone turnover biomarkers (BTMs) are indicators of bone metabolism and may be related to the progression of vascular calcification. Bone metabolism is associated with dyslipidemia and diabetes, which are both important risk factors for atherosclerosis. BTM levels are also related to glucose and lipid metabolism[7]. Thus, BTM levels may be useful biomarkers for assessing the risk of cardiovascular events in patients with T2DM.

Osteocalcin (OC) is a biochemical marker of bone formation that specifically mediates bone mineralization and is expressed mainly by osteoblasts. Osteoblasts are also known to secrete endocrine factors that regulate insulin production and adipose tissue metabolism. OC can extend the metabolic endocrine function of bone with obvious extraosseous effects and is vital for not only bone metabolism but also lipid and glucose metabolism. OC can directly regulate energy metabolism, including glucose and lipids, and is involved in the process of vascular calcification affecting the progression of atherosclerosis [8]. OC is also associated with atherosclerotic disease specifically in patients with T2DM [9]. Another BTM, the C-terminal cross-linked telopeptide of type I collagen (CTX), is a marker of bone resorption. Recent clinical research identified CTX as an independent predictor of increased common carotid artery wall intima-media thickness in the elderly population [10]. The BTM procollagen type I N-peptide (PINP) was shown to predict the risk of myocardial infarction in older male patients [11].

Clinical studies to date have mainly studied the associations between different BTMs and atherosclerosis, whereas few studies have explored the correlations between BTM levels and severe intracranial and extracranial artery stenosis in patients with T2DM. Thus, we aimed to determine whether BTMs are associated with intracranial and extracranial atherosclerosis and investigate the value of BTMs as potential indicators for risk assessment and intervention targets for severe intracranial and extracranial artery stenosis in patients with T2DM.

MATERIALS AND METHODS

Study sample and data collection

This cross-sectional study included 257 consecutive patients with T2DM who were hospitalized in our facility between January 2018 and December 2019 and underwent evaluation of intracranial and extracranial arteries. Data were recorded by trained physicians who used a standardized questionnaire to collect medical history information, including age, sex, and history of stroke, coronary artery disease (CAD), hypertension, dyslipidemia, smoking, and alcohol consumption. Diseases were recorded based on codes from the International Classification, Ninth Revision. Physical parameters, including height, weight, and body mass index (BMI), were measured. T2DM was diagnosed according to criteria recommended by the American Diabetes Association in 1997 [12]. T2DM diagnosis was based on fasting plasma glucose ≥ 7.0 mmol/L or plasma glucose ≥ 11.1 mmol/L or hemoglobin (HbA1c) $\geq 6.5\%$. Patients were excluded if they were taking any medication that might influence bone metabolism, such as steroids, thiazides, vitamin D or calcium supplements, antiresorptive or hormone therapy, or were known to have any of the following conditions: acute diabetic complications, malignant tumor, infection, hepatic failure, chronic kidney disease, heart failure, thyroid disease, parathyroid disease, or gastrointestinal disease. The ethics committee of Xuanwu Hospital of Capital Medical University approved this study. All participants provided informed consent.

Biochemical measurements

After overnight fasting for 12 h, peripheral venous blood samples were collected early the next morning for all patients. Fasting plasma glucose (FPG), triglyceride (TG), total cholesterol (TC), high-density lipoprotein cholesterol (HDL-C), low-density lipoprotein cholesterol (LDL-C), serum creatinine (Scr), blood urea nitrogen (Bun), and uric acid (UA) levels were measured by an automatic analyzer. The glycated HbA1c level was measured by high-pressure liquid chromatography. Insulin (INS), C-peptide (CP), OC, CTX, and PINP levels were determined using an electrical chemiluminescent immunoassay.

Ultrasonography

Sonographers performed color Doppler ultrasound to obtain images of the common carotid arteries, external carotid arteries, internal carotid arteries, and subclavian arteries. Severe extracranial stenosis was defined as the narrowing of vessel diameter by $\geq 70\%$ in any of these arteries. Sonographers also performed transcranial Doppler ultrasound to obtain images of the anterior cerebral arteries, middle cerebral arteries, posterior cerebral arteries, basilar arteries, and vertebral arteries. Severe intracranial artery stenosis was defined as the narrowing of vessel diameter by $\geq 70\%$ in any of these arteries. According to the results of these examinations, patients were assigned to four groups: No severe intracranial and extracranial artery stenosis (NOCS) group, only severe intracranial artery stenosis (ICAS) group, only severe extracranial artery stenosis (ECAS) group, and combined severe intracranial and extracranial artery stenosis (COAS) group. For analysis, the AS group included all patients with severe intracranial and/or extracranial artery stenosis (ICAS + ECAS + COAS groups).

Statistical analysis

Normally distributed data are presented as the mean \pm SD, and data with a skewed distribution are presented as the median (interquartile range). Categorical variables are shown as frequencies (percentages). We used the Mann-Whitney *U* test to compare mean values between the NOCS and AS groups. The Kruskal-Wallis test was used to compare mean values among the NOCS, ICAS, ECAS, and

COAS groups. When no subgroup had an expected count below five, we used the Pearson χ^2 test. If any subgroup had an expected count below five, we used Fisher's exact test. We performed Spearman correlation analysis to calculate correlation coefficients between BTM levels and glucose and lipid parameters. We used multivariate logistic regression models to estimate the association of artery stenosis with BTM levels. Receiver operating characteristic (ROC) curves and the corresponding area under the curve (AUC) values were used to examine the ability of BTM levels to predict the incidence of artery stenosis. All statistical analyses were performed with the SPSS Statistical Package (version 26.0). The results were considered statistically significant if the corresponding *P* value was less than 0.05.

RESULTS

Patient characteristics

Among the 257 T2DM patients included in this study, 136 were female and 121 were male. The mean age of all participants was 66 ± 11 years (range, 36–93 years). The average duration of T2DM among all patients was 12.0 ± 13.0 years. Overall, 87.2% ($n = 224$) had no stenosis (NOCS group), and 12.8% ($n = 33$) had some form of stenosis (AS group). The clinical and laboratory parameters for all patients and the groups with and without artery stenosis are presented in [Table 1](#). Compared with the NOCS group, the AS group had a higher percentage of patients with a history of stroke (9.8% *vs* 27.3%, $P = 0.004$) and higher levels of HbA1c, OC, CTX, and PINP (all $P < 0.05$).

The clinical and laboratory parameters of patients categorized further based on the location of artery stenosis are presented in [Table 2](#). Among the 33 patients with T2DM with artery stenosis, 7.4% ($n = 19$) had only severe intracranial artery stenosis (ICAS group), 3.1% ($n = 8$) had only severe extracranial artery stenosis (ECAS group), and 2.3% ($n = 6$) had both severe intracranial and extracranial artery stenosis (COAS group). Compared with that in the NOCS group, the frequency of previous strokes was higher in all three groups (21.1% in ICAS group *vs* 25.0% in ECAS group *vs* 50.0% in COAS group *vs* 9.8% in NOCS, $P = 0.009$). Compared with the NOCS group, the ICAS group had a lower frequency of hyperlipidemia, and the ECAS group had a higher frequency of hyperlipidemia (21.1% in the ICAS group *vs* 75.0% in the ECAS group *vs* 50% in the NOCS group, $P = 0.029$). The OC levels differed significantly among the four groups ($P = 0.012$). Further statistical analyses determined that the OC levels in the COAS and ICAS groups were higher than those in the NOCS group ($P = 0.034$ and 0.039 , respectively). While the ECAS group showed a trend toward higher OC levels compared with the NOCS group, the difference was not significant ($P = 0.077$). Similarly, the CTX levels differed among the four groups ($P = 0.027$), and further statistical analysis showed that the CTX level in the COAS group was higher than that in the NOCS group ($P = 0.017$). The ICAS group also showed a trend toward higher CTX levels than the NOCS group, but this difference did not reach statistical significance ($P = 0.062$). The PINP concentrations were comparable among the four groups, although a weak trend toward a reduced PINP was seen in the NOCS group ($P = 0.059$).

Associations between BTM levels and artery stenosis

We applied four multivariate logistic regression models to identify independent predictors of artery stenosis ([Table 3](#)). With the unadjusted Model 1, the OC level was found to be significantly associated with an increased risk of artery stenosis [odds ratio (OR) = 1.123; 95%CI: 1.049–1.203; $P = 0.001$]. A similar association was observed with the model further adjusted for age and sex (Model 2, OR = 1.117; 95%CI: 1.041–1.199; $P = 0.002$). With further adjustment of the model for hypertension, hyperlipidemia, CAD, duration of T2DM, smoking status, and drinking status, the OC level remained a predictor of high risk for artery stenosis (Model 3, OR = 1.117; 95%CI: 1.039–1.201; $P = 0.003$). A significant association between the OC level and artery stenosis persisted after further adjustment of the model for BMI, Scr, Bun, UA, and HbA1c (Model 4, OR = 1.109; 95%CI: 1.029–1.196; $P = 0.007$). CTX and PINP levels were also significantly associated with artery stenosis in all models with adjustment for different potential confounding factors (all $P < 0.05$).

Correlation of BTM levels and parameters of glucose and lipid metabolism

The results of the Spearman correlation analysis of associations between BTM levels and parameters of glucose and lipid metabolism are presented in [Table 4](#). This analysis showed that the OC level was associated with the levels of TC ($r = 0.185$; $P = 0.003$) and LDL-C ($r = 0.213$; $P = 0.001$). Additionally, the CTX level was associated with the levels of FPG ($r = -0.134$; $P = 0.031$), TC ($r = 0.147$; $P = 0.018$), and LDL-C ($r = 0.197$; $P = 0.003$). The PINP level was associated with the levels of FPG ($r = -0.141$; $P = 0.024$) and LDL-C ($r = 0.129$; $P = 0.039$).

Predictive ability of BTM levels for artery stenosis

The ROC curves for the abilities of BTM levels to predict the incidence of artery stenosis in patients with T2DM are shown in [Figure 1](#). The AUC (95%CI) values were 0.673 (0.580, 0.766) for OC, 0.644 (0.538, 0.751) for CTX, and 0.639 (0.536, 0.742) for PINP. All three BTMs were found to be significant predictors

Table 1 Basic and clinical characteristics of all participants and those in the no severe intracranial and extracranial artery stenosis and artery stenosis groups

Characteristics	All patients (n = 257)	NOCS group (n = 224)	AS group (n = 33)	P value
Age (yr)	66.0 (11.0)	66.0 (11.0)	68.0 (12.0)	0.236
Male, n (%)	121 (47.1)	103 (46.0)	18 (54.5)	0.358
Duration of T2DM (yr)	12.0 (13.0)	12.0 (14.0)	13.0 (11.0)	0.438
Risk factors, n (%)				
Hypertension	189 (73.5)	165 (73.7)	24 (72.7)	0.910
Hyperlipidemia	124 (48.2)	112 (50.0)	12 (36.4)	0.143
CAD	74 (28.8)	63 (28.3)	11 (33.3)	0.548
Previous stroke	31 (12.1)	22 (9.8)	9 (27.3)	0.004
Current smoker	74 (28.8)	67 (29.9)	7 (21.2)	0.303
Current drinker	64 (24.9)	59 (26.3)	5 (15.2)	0.165
BMI (kg/m ²)	25.76 (3.57)	25.78 (3.59)	25.76 (3.45)	0.597
Glucose (mmol/L)	7.48 (3.58)	7.49 (3.53)	6.72 (4.25)	0.563
HbA1c (%)	7.60 (2.50)	7.60 (2.60)	8.40 (2.90)	0.037
INS (μIU/mL)	12.21 (12.71)	12.00 (10.71)	16.82 (18.93)	0.159
CP (ng/mL)	2.33 (1.52)	2.33 (1.53)	2.40 (1.89)	0.754
TC (mmol/L)	4.26 (1.50)	4.27 (1.41)	4.23 (2.25)	0.721
TG (mmol/L)	1.48 (1.38)	1.50 (1.39)	1.41 (1.36)	0.433
LDL-C (mmol/L)	2.38 (1.27)	2.39 (1.20)	2.27 (1.79)	0.781
HDL-C (mmol/L)	1.12 (0.47)	1.13 (0.47)	1.04 (0.38)	0.320
Scr (μmol/L)	62.0 (24.0)	62.0 (22.8)	60.0 (43.0)	0.144
Bun (mmol/L)	5.98 (2.30)	5.92 (2.12)	6.82 (3.60)	0.137
UA (μmol/L)	341.0 (126.5)	342.0 (127.3)	339.0 (1520)	0.823
OC (ng/mL)	10.60 (5.87)	10.27 (5.87)	12.63 (7.07)	0.001
CTX (pg/mL)	0.31 (0.21)	0.29 (0.19)	0.39 (0.30)	0.007
PINP (pg/mL)	34.40 (20.96)	33.39 (20.37)	43.92 (25.50)	0.010

Data are presented as the mean ± SD unless otherwise indicated. NOCS: No severe intracranial and extracranial artery stenosis; AS: Artery stenosis; CAD: Coronary artery disease; BMI: Body mass index; HbA1c: Hemoglobin; INS: Insulin; CP: C-peptide; TC: Total cholesterol; TG: Triglyceride; HDL-C: High-density lipoprotein cholesterol; LDL-C: Low-density lipoprotein cholesterol; Scr: Serum creatinine; Bun: Blood urea nitrogen; UA: Uric acid; OC: Osteocalcin; CTX: C-terminal cross-linked telopeptide of type I collagen; PINP: Procollagen type I N-peptide.

of artery stenosis risk among the patients with T2DM included in this study ($P < 0.001$).

DISCUSSION

In this study, we explored the associations among BTM levels, previous stroke, and the burden and location of intracranial and extracranial artery stenosis in patients with T2DM. We also investigated the correlations among BTM levels and parameters of glucose and lipid metabolism in patients with T2DM. From the cross-sectional data analyzed in this study, we observed a considerable incidence of artery stenosis among patients with T2DM. Moreover, T2DM patients with artery stenosis were more likely to have a history of stroke than those without artery stenosis, regardless of the location of artery stenosis, and the highest incidence of previous stroke was observed among patients with both severe intracranial and extracranial artery stenosis (COAS group). We also found that BTM levels showed significant correlations with the risk of severe intracranial and extracranial artery stenosis. In this study, circulating OC, CTX, and PINP concentrations were significantly higher in T2DM patients with artery stenosis (AS group) than in those without artery stenosis (NOCS group, Table 1). Some differences were observed

Table 2 Basic and clinical characteristics of patients in the no severe intracranial and extracranial artery stenosis, intracranial artery stenosis, severe extracranial artery stenosis and combined severe intracranial and extracranial artery stenosis groups

Characteristics	NOCS group (n = 224)	ICAS group (n = 19)	ECAS group (n = 8)	COAS group (n = 6)	P value
Age (yr)	66.0 (11.0)	65.0 (16.0)	67.5 (13.0)	71.0 (10.0)	0.373
Male, n (%)	103 (46.0)	10 (52.6)	5 (62.5)	3 (50)	0.780
Duration of T2DM (yr)	12.0 (14.0)	15.0 (11.0)	18.0 (20.8)	11.5 (7.0)	0.635
Risk factors, n (%)					
Hypertension	165 (73.7)	13 (68.4)	5 (62.5)	6 (100)	0.527
Hyperlipidemia	112 (50.0)	4 (21.1)	7 (75.0)	2 (33.3)	0.029
CAD	63 (28.3)	7 (36.8)	2 (25.0)	2 (33.3)	0.826
Previous stroke	22 (9.8)	4 (21.1)	2 (25.0)	3 (50.0)	0.009
Current smoker	67 (29.9)	4 (21.1)	1 (12.5)	2 (33.3)	0.682
Current drinker	59 (26.3)	4 (21.1)	1 (12.5)	0 (0)	0.554
BMI (kg/m ²)	25.78 (3.59)	26.06 (3.90)	25.32 (2.33)	23.96 (12.48)	0.821
FPG (mmol/L)	7.49 (3.53)	7.83 (4.13)	7.13 (6.89)	5.76 (2.48)	0.446
HbA1c (%)	7.60 (2.60)	7.90 (3.10)	9.15 (1.70)	7.90 (1.80)	0.067
INS (μIU/mL)	12.00 (10.71)	16.99 (19.11)	12.78 (19.72)	15.90 (25.32)	0.334
CP (ng/mL)	2.33 (1.53)	2.52 (1.45)	1.56 (2.95)	2.03 (2.31)	0.599
TC (mmol/L)	4.27 (1.41)	3.85 (1.98)	4.92 (2.35)	4.35 (2.25)	0.535
TG (mmol/L)	1.50 (1.39)	1.59 (1.31)	1.29 (1.31)	1.16 (1.85)	0.585
LDL-C (mmol/L)	2.39 (1.20)	2.27 (1.76)	2.62 (1.88)	2.01 (2.27)	0.943
HDL-C (mmol/L)	1.13 (0.47)	0.98 (0.29)	1.25 (1.21)	1.04 (0.43)	0.170
Scr (μmol/L)	62.0 (22.8)	59.0 (48.0)	78.5 (44.8)	60.0 (40.3)	0.499
Bun (mmol/L)	5.92 (2.12)	6.36 (2.74)	7.92 (6.76)	6.57 (5.00)	0.419
UA (μmol/L)	342.0 (127.3)	358.0 (174.0)	322.5 (153.3)	303.0 (136.3)	0.746
OC (ng/mL)	10.27 (5.87)	12.76 (8.14)	11.89 (4.02)	15.15 (11.43)	0.012
CTX (pg/mL)	0.29 (0.19)	0.41 (0.29)	0.35 (0.23)	0.65 (0.51)	0.027
PINP (pg/mL)	33.39 (20.37)	41.25 (24.71)	47.22 (39.85)	51.28 (37.96)	0.059

Data are presented as the mean ± SD unless otherwise indicated. NOCS: No severe intracranial and extracranial artery stenosis; ICAS: Severe intracranial artery stenosis; ECAS: Severe extracranial artery stenosis; COAS: Combined severe intracranial and extracranial artery stenosis; CAD: Coronary artery disease; BMI: Body mass index; HbA1c: Hemoglobin; INS: Insulin; FPG: Fasting plasma glucose; CP: C-peptide; TC: Total cholesterol; TG: Triglyceride; HDL-C: High-density lipoprotein cholesterol; LDL-C: Low-density lipoprotein cholesterol; Scr: Serum creatinine; Bun: Blood urea nitrogen; UA: Uric acid; OC: Osteocalcin; CTX: C-terminal cross-linked telopeptide of type I collagen; PINP: Procollagen type I N-peptide.

among the trends in BTMs according to the location of artery stenosis. OC levels were higher in all subgroups with artery stenosis, whereas CTX levels were only higher in the COAS and ICAS groups than in the NOCS group. Our analyses indicated that all three BTMs were independent risk factors for severe intracranial and extracranial artery stenosis in patients with T2DM, in support of our hypothesis, and these associations were independent of possible confounders. Based on their correlation with indicators of glucose and lipid metabolism, the elevated BTM levels identified a particularly unfavorable metabolic profile, mostly related to dyslipidemia. Higher BTM levels were associated with elevated LDL-C, and the OC level was positively correlated with the TC level. However, the CTX level was negatively correlated with FPG and positively correlated with TC. Furthermore, the PINP level was negatively correlated with FPG. These findings suggest that BTM levels can reflect altered glucose and lipid metabolism as well as atherosclerosis. The role of BTMs in bone metabolism along with their influence on glucose and lipid homeostasis and stroke risk confirms the tight interaction of the cardiovascular–bone metabolism axis. Overall, the present study suggests that BTMs may represent novel biomarkers of accelerated atherosclerosis in patients with T2DM, offering promising tools for cardiovascular risk stratification among patients with T2DM.

Table 3 Association of bone turnover biomarker levels with artery stenosis

Variable	Model	OR (95%CI)	P value
OC	Model 1	1.123 (1.049-1.203)	0.001
	Model 2	1.117 (1.041-1.199)	0.002
	Model 3	1.117 (1.039-1.201)	0.003
	Model 4	1.109 (1.029-1.196)	0.007
CTX	Model 1	9.750 (1.759-54.059)	0.009
	Model 2	8.674 (1.529-49.211)	0.015
	Model 3	10.833 (1.725-68.037)	0.011
	Model 4	8.526 (1.189-61.119)	0.033
PINP	Model 1	1.024 (1.006-1.042)	0.010
	Model 2	1.022 (1.003-1.041)	0.025
	Model 3	1.022 (1.003-1.042)	0.021
	Model 4	1.020 (1.001-1.040)	0.044

Model 1: Unadjusted, crude model; Model 2: Adjusted for age and gender; Model 3: Further adjusted for hypertension, hyperlipidemia, coronary artery disease, duration of type 2 diabetes mellitus, current smoker, current drinker; Model 4: Further adjusted for body mass index, serum creatinine, blood urea nitrogen, uric acid, and hemoglobin. OC: Osteocalcin; CTX: C-terminal cross-linked telopeptide of type I collagen; PINP: Procollagen type I N-peptide.

Table 4 Spearman correlation coefficients for the associations between bone turnover biomarker levels and indicators of glucose and lipid metabolism

Variable	OC		CTX		PINP	
	<i>r</i>	<i>P</i> value	<i>r</i>	<i>P</i> value	<i>r</i>	<i>P</i> value
FPG	-0.102	0.103	-0.134	0.031	-0.141	0.024
HbA1c	-0.012	0.846	-0.022	0.724	-0.012	0.845
INS	-0.050	0.425	-0.086	0.172	-0.031	0.628
CP	0.021	0.741	0.045	0.473	0.067	0.286
TC	0.185	0.003	0.147	0.018	0.112	0.074
TG	0.020	0.753	-0.058	0.351	-0.041	0.514
LDL-C	0.213	0.001	0.187	0.003	0.129	0.039
HDL-C	0.020	0.745	0.062	0.319	0.015	0.811

OC: Osteocalcin; CTX: C-terminal cross-linked telopeptide of type I collagen; PINP: Procollagen type I N-peptide; FPG: Fasting plasma glucose; HbA1c: Hemoglobin; INS: Insulin; CP: C-peptide; TC: Total cholesterol; TG: Triglyceride; HDL-C: High-density lipoprotein cholesterol; LDL-C: Low-density lipoprotein cholesterol.

T2DM is a common metabolic disease, and its incidence continues to increase worldwide. The incidence of atherosclerosis in patients with T2DM is high, and large vessel disease due to atherosclerosis seriously threatens the life and health of patients with T2DM. Thus, effective strategies for the prevention and treatment of large vessel disease in the context of T2DM are needed to improve public health globally. Even with reductions in traditional risk factors for cardiovascular disease (CVD), achieved *via* better blood lipid control and smoking cessation, the incidence of CVD remains high. Moreover, blood glucose control does not completely reduce the mortality attributed to atherosclerotic and vascular calcification-related CVD among patients with T2DM. Therefore, other pathological mechanisms of atherosclerosis need to be characterized to support the discovery of therapeutic targets that can be used to identify, diagnose, evaluate, and treat patients with T2DM at high risk of atherosclerosis as early as possible to improve the prognosis of patients with T2DM.

With research advances related to bone health and vascular lesions, the significance and key role of the bone-vascular axis in vascular lesions are increasingly recognized. The instability of atherosclerotic plaques is associated with a higher level of calcification, and severe vascular calcification can be

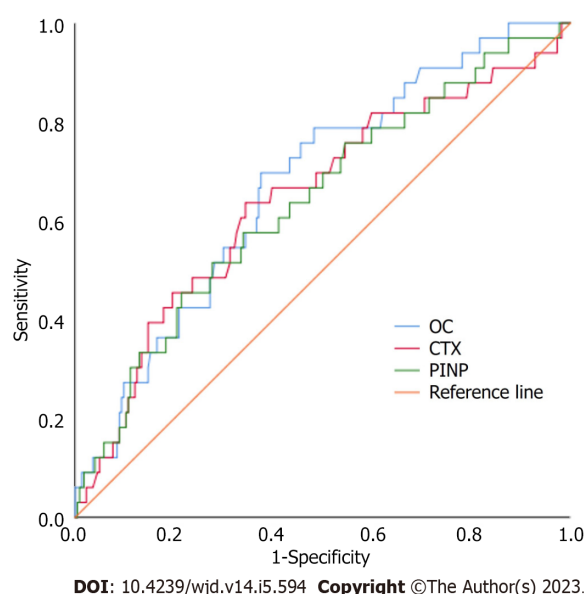


Figure 1 Receiver operating characteristic curve analysis of the diagnostic value of bone turnover biomarker levels for artery stenosis in type 2 diabetes mellitus patients. OC: Osteocalcin; CTX: C-terminal cross-linked telopeptide of type I collagen; PINP: Procollagen type I N-peptide.

regarded as a nonspecific marker of atherosclerosis. The calcified atherosclerosis burden is considered the main predictor of risk for CVD events and death[13]. T2DM is associated with greater intraplaque calcification volume and a greater proportion of calcification within a plaque. Vascular calcification was also shown to be a powerful risk factor for cardiovascular death in patients with T2DM and results in the development of severe atherosclerosis[14]. Likely, several important mediators of bone mineral homeostasis are also involved in the development of arterial calcification.

Several mineralization markers have been identified in atheromatic plaques[15]. Currently, the effects of BTM levels on atherosclerosis or plaque calcification remain unclear, with conflicting data reported in the literature. Previous studies have mainly examined the relationship between BTM levels and the prevalence of atherosclerotic diseases and found that BTM levels may be predictors of cardiovascular risk in T2DM patients[16]. In patients with T2DM, OC was identified as an independent risk factor for carotid atherosclerosis[17] and shown to play a role in CVD[18]. OC was also found to be deposited at sites of vascular calcification[19]. Another study found that progressive calcification of atherosclerotic plaques was accompanied by a significant increase in OC[20]. Type I collagen is a major collagen component of the intima, media, and adventitia of blood vessel walls and is significantly increased in atherosclerosis. PINP is a precursor of type I collagen, and CTX is the carboxyl-terminal degradation product of type I collagen. Thus, the expression levels of both BTMs are increased in atherosclerosis accordingly. Abnormal matrix collagen turnover in vessel walls eventually causes arterial stiffness, which is associated with CVD risk, and increased arterial stiffness is associated with both collagen degradation (CTX) and synthesis[21]. Increased osteoclast activity has been observed in T2DM[22], and CTX expression was found in areas of intimal hyperplasia and late-calcified plaques[23]. Gafane *et al*[24] found a positive association between large artery stiffness and the CTX level. Another study found that OC and CTX levels are related to an increased risk of cardiac and carotid calcified plaque development [25]. However, research on the correlation between BTM levels and severe intracranial and extracranial stenosis in patients with T2DM is lacking. The present study found that BTM levels were significantly associated with the risk of artery stenosis in unadjusted and fully adjusted models accounting for potential confounders. These results suggest for the first time that BTMs are independent risk factors for severe intracranial and extracranial stenosis in patients with T2DM. Notably, these associations were independent of other known cardiovascular risk factors in T2DM. Additionally, our results indicate that BTMs may participate in and contribute to the pathogenesis and progression of atherosclerosis.

The mechanisms by which BTMs influence atherosclerosis remain unclear. One possibility is that OC plays an important role in glucose metabolism[26,27]. Consistently, in this study, OC was significantly associated with glucose regulation. We also observed that PINP and CTX levels were negatively correlated with FPG. A previous study found that PINP is negatively correlated with FPG and HbA1c [28]. We also found that all tested BTMs were associated with indicators of dyslipidemia. Barchetta *et al* [29] also reported an association between OC and TC. We also observed differences in glucose and lipid metabolism about artery stenosis in patients with T2DM. Patients with artery stenosis had higher levels of HbA1c than those without artery stenosis. However, indicators of dyslipidemia differed between patients with intracranial *vs* extracranial artery stenosis in our study. Jin *et al*[30] found that hyperlipidemia was an independent predictor of extracranial artery stenosis but not intracranial artery stenosis,

and in the present study, a higher frequency of hyperlipidemia was observed in the ECAS group.

Metabolic variables may represent the underlying mechanism for the association between BTMs and atherosclerosis, as increased BTM levels correlated with several metabolic risk factors and increased atherosclerosis. BTMs may influence glucose and lipid homeostasis, while cardiovascular risk factors can regulate the expression of mineralization markers and promote the calcification process.

The strengths of the present study include overall profiling of BTM levels in patients with T2DM, which has not been reported previously, and extensive correlation analyses between BTM levels and indicators of glucose metabolism, lipid metabolism, and vascular disease, which ultimately allowed us to identify independent associations between BTM levels and atherosclerosis in patients with T2DM. However, this study also has several limitations. Due to its cross-sectional design, we could not establish causal relationships among the correlating factors. Further prospective studies with relevant clinical endpoints are needed to clarify whether BTMs play a causal role in the development of atherosclerosis and to assess the effect of BTM-lowering therapies on the development of atherosclerosis. We plan to carry out large-scale longitudinal studies in the future. Finally, *in vivo* animal studies are required to elucidate the role of BTMs in the pathogenic mechanisms of atherosclerosis and plaque calcification.

Based on our findings that BTM levels are strongly correlated with artery stenosis risk and disturbance of glucose and lipid metabolism, BTMs should be investigated as indicators for predicting the risk of CVD and as potential therapeutic targets for artery stenosis in patients with T2DM. Multimodal imaging technologies can identify intracranial and extracranial atherosclerosis, which indicates an increased risk of ischemic events or artery stenosis. The combination of such imaging analyses and measurement of serum BTM levels offers a promising strategy for evaluating the diagnosis, pathogenesis, and progression of intracranial and extracranial stenosis. Therefore, we should test BTMs in patients with T2DM, complete vascular examinations in patients with elevated BTMs, and conduct active monitoring, follow-up, and treatment in this part of the population.

CONCLUSION

Elevated BTM levels correlated with an increased risk of artery stenosis in patients with T2DM as well as with several indicators of metabolic syndrome. Accordingly, BTM levels may serve as circulating endocrine markers that reflect the regulation of glucose and lipid metabolism, thereby reflecting the risk of vascular disease in patients with T2DM. BTMs may also represent potential therapeutic targets for atherosclerosis, and additional research is warranted to explore the underlying mechanism linking BTMs and atherosclerosis. Patients with high BTM levels should be considered a high-risk group in efforts to prevent cardiovascular events.

ARTICLE HIGHLIGHTS

Research background

Intracranial and extracranial artery stenosis is associated with cerebral infarction. Vascular calcification and atherosclerosis are the main causes of stenosis and major risk factors for cardiovascular and cerebrovascular events in patients with type 2 diabetes mellitus (T2DM).

Research motivation

Our study found that bone turnover biomarkers (BTMs) are associated with the risk of arterial stenosis, probably due to the relationship between BTMs and glucose and lipid metabolism disorders. Detection of BTMs in patients with T2DM may help reduce the occurrence of cardiovascular disease.

Research objectives

This study aimed to investigate the association of circulating BTM levels with severe intracranial and extracranial artery stenosis in patients with T2DM.

Research methods

After overnight fasting for 12 h, peripheral venous blood samples were collected early the next morning for all patients. Fasting plasma glucose, triglyceride, total cholesterol, high-density lipoprotein cholesterol, low-density lipoprotein cholesterol, serum creatinine, blood urea nitrogen, and uric acid levels were measured by an automatic analyzer. The glycated hemoglobin (HbA1c) level was measured by high-pressure liquid chromatography. Insulin, C-peptide, osteocalcin (OC), C-terminal cross-linked telopeptide of type I collagen (CTX), and procollagen type I N-peptide (PINP) levels were determined using an electrical chemiluminescent immunoassay.

Research results

Among the 257 T2DM patients included in this study, 136 were female and 121 were male. The mean age of all participants was 66 ± 11 years. The average duration of T2DM among all patients was 12.0 ± 13.0 years. Overall, 87.2% had no stenosis, and 12.8% had some form of stenosis. Compared with the no severe intracranial and extracranial artery stenosis group, the artery stenosis group had a higher percentage of patients with a history of stroke and higher levels of HbA1c, OC, CTX, and PINP.

Research conclusions

Elevated BTM levels correlated with an increased risk of artery stenosis in patients with T2DM as well as with several indicators of metabolic syndrome. Accordingly, BTM levels may serve as circulating endocrine markers that reflect the regulation of glucose and lipid metabolism, thereby reflecting the risk of vascular disease in patients with T2DM.

Research perspectives

BTMs may also represent potential therapeutic targets for atherosclerosis, and additional research is warranted to explore the underlying mechanism linking BTMs and atherosclerosis.

FOOTNOTES

Author contributions: Si SC and Yang W contributed to the study conception and design; Liu J, Luo HY, Ma YX and Zhao H recruited patients and supervised the study process; Si SC analyzed the data and wrote the manuscript; and all authors read and approved the final article.

Supported by Beijing Municipal Hospital Management Center “Cultivation Plan”, No. PX2022032.

Institutional review board statement: This study was approved by the Ethics Committees of Xuanwu Hospital of Capital Medical University.

Informed consent statement: All participants provided informed consent.

Conflict-of-interest statement: There are no conflicts of interest.

Data sharing statement: The data from this article will be provided by the corresponding author upon reasonable request.

Open-Access: This article is an open-access article that was selected by an in-house editor and fully peer-reviewed by external reviewers. It is distributed in accordance with the Creative Commons Attribution NonCommercial (CC BY-NC 4.0) license, which permits others to distribute, remix, adapt, build upon this work non-commercially, and license their derivative works on different terms, provided the original work is properly cited and the use is non-commercial. See: <https://creativecommons.org/licenses/by-nc/4.0/>

Country/Territory of origin: China

ORCID number: Wei Yang 0000-0001-6568-3090; Jia Liu 0000-0001-6683-3548.

S-Editor: Wang JL

L-Editor: A

P-Editor: Chen YX

REFERENCES

- 1 Jiang C, Zhang J, Zhu J, Wang X, Wen Z, Zhao X, Yuan C; CARE-II Investigators. Association between coexisting intracranial artery and extracranial carotid artery atherosclerotic diseases and ipsilateral cerebral infarction: a Chinese Atherosclerosis Risk Evaluation (CARE-II) study. *Stroke Vasc Neurol* 2021; **6**: 595-602 [PMID: 33903178 DOI: 10.1136/svn-2020-000538]
- 2 Thompson B, Towler DA. Arterial calcification and bone physiology: role of the bone-vascular axis. *Nat Rev Endocrinol* 2012; **8**: 529-543 [PMID: 22473330 DOI: 10.1038/nrendo.2012.36]
- 3 Bos D, Leening MJ, Kavousi M, Hofman A, Franco OH, van der Lugt A, Vernooij MW, Ikram MA. Comparison of Atherosclerotic Calcification in Major Vessel Beds on the Risk of All-Cause and Cause-Specific Mortality: The Rotterdam Study. *Circ Cardiovasc Imaging* 2015; **8** [PMID: 26659376 DOI: 10.1161/CIRCIMAGING.115.003843]
- 4 Demer LL, Tintut Y. Vascular calcification: pathobiology of a multifaceted disease. *Circulation* 2008; **117**: 2938-2948 [PMID: 18519861 DOI: 10.1161/CIRCULATIONAHA.107.743161]
- 5 Towler DA. Commonalities Between Vasculature and Bone: An Osseocentric View of Arteriosclerosis. *Circulation* 2017;

- 135: 320-322 [PMID: [28115412](#) DOI: [10.1161/CIRCULATIONAHA.116.022562](#)]
- 6 **Wagenknecht LE**, Divers J, Register TC, Russell GB, Bowden DW, Xu J, Langefeld CD, Lenchik L, Hruska KA, Carr JJ, Freedman BI. Bone Mineral Density and Progression of Subclinical Atherosclerosis in African-Americans With Type 2 Diabetes. *J Clin Endocrinol Metab* 2016; **101**: 4135-4141 [PMID: [27552541](#) DOI: [10.1210/jc.2016-1934](#)]
- 7 **Bellissimo MP**, Roberts JL, Jones DP, Liu KH, Taibl KR, Uppal K, Weitzmann MN, Pacifici R, Drissi H, Ziegler TR, Alvarez JA. Metabolomic Associations with Serum Bone Turnover Markers. *Nutrients* 2020; **12** [PMID: [33081124](#) DOI: [10.3390/nu12103161](#)]
- 8 **Yang SW**, Hennessy RR, Khosla S, Lennon R, Loeffler D, Sun T, Liu Z, Park KH, Wang FL, Lerman LO, Lerman A. Circulating osteogenic endothelial progenitor cell counts: new biomarker for the severity of coronary artery disease. *Int J Cardiol* 2017; **227**: 833-839 [PMID: [27836295](#) DOI: [10.1016/j.ijcard.2016.10.036](#)]
- 9 **Reyes-Garcia R**, Rozas-Moreno P, Jimenez-Moleon JJ, Villoslada MJ, Garcia-Salcedo JA, Santana-Morales S, Muñoz-Torres M. Relationship between serum levels of osteocalcin and atherosclerotic disease in type 2 diabetes. *Diabetes Metab* 2012; **38**: 76-81 [PMID: [21996253](#) DOI: [10.1016/j.diabet.2011.07.008](#)]
- 10 **Leli C**, Pasqualini L, Vaudo G, Gaggioli S, Scarponi AM, Mannarino E. Carotid intima-media thickness and bone turnover: the role of C-terminal telopeptide of type I collagen. *Intern Emerg Med* 2010; **5**: 127-134 [PMID: [20182821](#) DOI: [10.1007/s11739-010-0356-y](#)]
- 11 **Yeap BB**, Alfonso H, Chubb SA, Byrnes E, Beilby JP, Ebeling PR, Allan CA, Schultz C, Hankey GJ, Golledge J, Flicker L, Norman PE. Proportion of Undercarboxylated Osteocalcin and Serum P1NP Predict Incidence of Myocardial Infarction in Older Men. *J Clin Endocrinol Metab* 2015; **100**: 3934-3942 [PMID: [26308289](#) DOI: [10.1210/jc.2015-1899](#)]
- 12 **Alberti KG**, Zimmet PZ. Definition, diagnosis and classification of diabetes mellitus and its complications. Part 1: diagnosis and classification of diabetes mellitus provisional report of a WHO consultation. *Diabet Med* 1998; **15**: 539-553 [PMID: [9686693](#) DOI: [10.1002/\(SICI\)1096-9136\(199807\)15:7<539::AID-DIA668>3.0.CO;2-S](#)]
- 13 **Allison MA**, Hsi S, Wassel CL, Morgan C, Ix JH, Wright CM, Criqui MH. Calcified atherosclerosis in different vascular beds and the risk of mortality. *Arterioscler Thromb Vasc Biol* 2012; **32**: 140-146 [PMID: [22034514](#) DOI: [10.1161/ATVBAHA.111.235234](#)]
- 14 **Lei MH**, Wu YL, Chung SL, Chen CC, Chen WC, Hsu YC. Coronary Artery Calcium Score Predicts Long-Term Cardiovascular Outcomes in Asymptomatic Patients with Type 2 Diabetes. *J Atheroscler Thromb* 2021; **28**: 1052-1062 [PMID: [33162430](#) DOI: [10.5551/jat.59386](#)]
- 15 **Scimeca M**, Anemona L, Granaglia A, Bonfiglio R, Urbano N, Toschi N, Santeusano G, Schiaroli S, Mauriello S, Tancredi V, Schillaci O, Bonanno E, Mauriello A. Plaque calcification is driven by different mechanisms of mineralization associated with specific cardiovascular risk factors. *Nutr Metab Cardiovasc Dis* 2019; **29**: 1330-1336 [PMID: [31653516](#) DOI: [10.1016/j.numecd.2019.08.009](#)]
- 16 **Zwakenberg SR**, van der Schouw YT, Schalkwijk CG, Spijkerman AMW, Beulens JWJ. Bone markers and cardiovascular risk in type 2 diabetes patients. *Cardiovasc Diabetol* 2018; **17**: 45 [PMID: [29571288](#) DOI: [10.1186/s12933-018-0691-2](#)]
- 17 **Sheng L**, Cao W, Cha B, Chen Z, Wang F, Liu J. Serum osteocalcin level and its association with carotid atherosclerosis in patients with type 2 diabetes. *Cardiovasc Diabetol* 2013; **12**: 22 [PMID: [23342952](#) DOI: [10.1186/1475-2840-12-22](#)]
- 18 **Levinger I**, Brennan-Speranza TC, Zulli A, Parker L, Lin X, Lewis JR, Yeap BB. Multifaceted interaction of bone, muscle, lifestyle interventions and metabolic and cardiovascular disease: role of osteocalcin. *Osteoporos Int* 2017; **28**: 2265-2273 [PMID: [28289780](#) DOI: [10.1007/s00198-017-3994-3](#)]
- 19 **Tyson KL**, Reynolds JL, McNair R, Zhang Q, Weissberg PL, Shanahan CM. Osteo/chondrocytic transcription factors and their target genes exhibit distinct patterns of expression in human arterial calcification. *Arterioscler Thromb Vasc Biol* 2003; **23**: 489-494 [PMID: [12615658](#) DOI: [10.1161/01.ATV.0000059406.92165.31](#)]
- 20 **Polonskaya YV**, Kashtanova EV, Murashov IS, Volkov AM, Kurguzov AV, Chernyavsky AM, Ragino YI. Associations of Osteocalcin, Osteoprotegerin, and Calcitonin with Inflammation Biomarkers in Atherosclerotic Plaques of Coronary Arteries. *Bull Exp Biol Med* 2017; **162**: 726-729 [PMID: [28429221](#) DOI: [10.1007/s10517-017-3698-x](#)]
- 21 **Cotie LM**, Currie KD, McGill GM, Cameron AJ, McFadden AS, Phillips SM, MacDonald MJ. Associations between measures of vascular structure and function and systemic circulating blood markers in humans. *Physiol Rep* 2016; **4** [PMID: [27670408](#) DOI: [10.14814/phy2.12982](#)]
- 22 **Gilbert MP**, Pratley RE. The impact of diabetes and diabetes medications on bone health. *Endocr Rev* 2015; **36**: 194-213 [PMID: [25738213](#) DOI: [10.1210/er.2012-1042](#)]
- 23 **Barascuk N**, Skjot-Arkil H, Register TC, Larsen L, Byrjalsen I, Christiansen C, Karsdal MA. Human macrophage foam cells degrade atherosclerotic plaques through cathepsin K mediated processes. *BMC Cardiovasc Disord* 2010; **10**: 19 [PMID: [20409295](#) DOI: [10.1186/1471-2261-10-19](#)]
- 24 **Gafane LF**, Schutte R, Kruger IM, Schutte AE. Large artery stiffness and carotid intima-media thickness in relation to markers of calcium and bone mineral metabolism in African women older than 46 years. *J Hum Hypertens* 2015; **29**: 152-158 [PMID: [25119885](#) DOI: [10.1038/jhh.2014.71](#)]
- 25 **Liu D**, Chen L, Dong S, Peng Z, Yang H, Chen Y, Li L, Zhou H, Zhou R. Bone mass density and bone metabolism marker are associated with progression of carotid and cardiac calcified plaque in Chinese elderly population. *Osteoporos Int* 2019; **30**: 1807-1815 [PMID: [31190121](#) DOI: [10.1007/s00198-019-05031-5](#)]
- 26 **Cipriani C**, Colangelo L, Santori R, Renella M, Mastrantonio M, Minisola S, Pepe J. The Interplay Between Bone and Glucose Metabolism. *Front Endocrinol (Lausanne)* 2020; **11**: 122 [PMID: [32265831](#) DOI: [10.3389/fendo.2020.00122](#)]
- 27 **Ma H**, Lin H, Hu Y, Li X, He W, Jin X, Gao J, Zhao N, Gao X. Serum levels of osteocalcin in relation to glucose metabolism and carotid atherosclerosis in Chinese middle-aged and elderly male adults: the Shanghai Changfeng Study. *Eur J Intern Med* 2014; **25**: 259-264 [PMID: [24521696](#) DOI: [10.1016/j.ejim.2014.01.017](#)]
- 28 **Li W**, Liu X, Liu L, Zhang L, Li M, Liu R, Li T, Chen E, Liu S. Relationships of Serum Bone Turnover Markers With Metabolic Syndrome Components and Carotid Atherosclerosis in Patients With Type 2 Diabetes Mellitus. *Front Cardiovasc Med* 2022; **9**: 824561 [PMID: [35548441](#) DOI: [10.3389/fcvm.2022.824561](#)]
- 29 **Barchetta I**, Ceccarelli V, Cimini FA, Bertocchini L, Fraioli A, Alessandri C, Lenzi A, Baroni MG, Cavallo MG. Impaired

- bone matrix glycoprotein pattern is associated with increased cardio-metabolic risk profile in patients with type 2 diabetes mellitus. *J Endocrinol Invest* 2019; **42**: 513-520 [PMID: 30132286 DOI: 10.1007/s40618-018-0941-x]
- 30 **Jin H**, Peng Q, Nan D, Lv P, Liu R, Sun W, Teng Y, Liu Y, Fan C, Xing H, Xu K, Huang Y. Prevalence and risk factors of intracranial and extracranial artery stenosis in asymptomatic rural residents of 13 villages in China. *BMC Neurol* 2017; **17**: 136 [PMID: 28720076 DOI: 10.1186/s12883-017-0924-0]



Published by **Baishideng Publishing Group Inc**
7041 Koll Center Parkway, Suite 160, Pleasanton, CA 94566, USA

Telephone: +1-925-3991568

E-mail: bpgoffice@wjgnet.com

Help Desk: <https://www.f6publishing.com/helpdesk>

<https://www.wjgnet.com>

