

# World Journal of *Diabetes*

*World J Diabetes* 2024 March 15; 15(3): 308-574



**EDITORIAL**

- 308 Unlocking new potential of clinical diagnosis with artificial intelligence: Finding new patterns of clinical and lab data  
*Dabla PK*
- 311 Acute worsening of microvascular complications of diabetes mellitus during rapid glycemic control: The pathobiology and therapeutic implications  
*Blaibel D, Fernandez CJ, Pappachan JM*
- 318 Periodontitis: An often-neglected complication of diabetes  
*Kudiyirickal MG, Pappachan JM*
- 326 Glucagon-like-peptide-1 receptor agonists and the management of type 2 diabetes-backwards and forwards  
*Horowitz M, Cai L, Islam MS*

**REVIEW**

- 331 Practical guide: Glucagon-like peptide-1 and dual glucose-dependent insulintropic polypeptide and glucagon-like peptide-1 receptor agonists in diabetes mellitus  
*Alqifari SF, Alkomi O, Esmail A, Alkhawami K, Yousri S, Muqresh MA, Alharbi N, Khojah AA, Aljabri A, Allahham A, Prabakar K, Alshareef H, Aldhaeefi M, Alrasheed T, Alrabiah A, AlBishi LA*
- 348 Association of autoimmune thyroid disease with type 1 diabetes mellitus and its ultrasonic diagnosis and management  
*Wang J, Wan K, Chang X, Mao RF*
- 361 Metabolic disorders in prediabetes: From mechanisms to therapeutic management  
*Ping WX, Hu S, Su JQ, Ouyang SY*
- 378 Epigenetic modifications of placenta in women with gestational diabetes mellitus and their offspring  
*Yi Y, Wang T, Xu W, Zhang SH*

**MINIREVIEWS**

- 392 Roles of fibroblast growth factors in the treatment of diabetes  
*Zhang CY, Yang M*

**ORIGINAL ARTICLE****Case Control Study**

- 403 Associations between Geriatric Nutrition Risk Index, bone mineral density and body composition in type 2 diabetes patients  
*Zhu XX, Yao KF, Huang HY, Wang LH*

- 418 Predictive value of angiotensin-like protein 8 in metabolic dysfunction-associated fatty liver disease and its progression: A case-control study

Gan LL, Xia C, Zhu X, Gao Y, Wu WC, Li Q, Li L, Dai Z, Yan YM

#### Retrospective Study

- 429 Myosteosis is associated with coronary artery calcification in patients with type 2 diabetes

Liu FP, Guo MJ, Yang Q, Li YY, Wang YG, Zhang M

- 440 Adherence to Advisory Committee on Immunization Practices in diabetes mellitus patients in Saudi Arabia: A multicenter retrospective study

Alqifari SF, Esmail AK, Alarifi DM, Alsuliman GY, Alhati MM, Mutlaq MR, Aldhaefi M, Alshuaibi SA, Amirthalingam P, Abdallah A, Wasel AS, Hamad HR, Alamin S, Atia TH, Alqahtani T

#### Observational Study

- 455 Evaluation of hybrid closed-loop insulin delivery system in type 1 diabetes in real-world clinical practice: One-year observational study

Eldib A, Dhaver S, Kibaa K, Atakov-Castillo A, Salah T, Al-Badri M, Khater A, McCarragher R, Elenani O, Toschi E, Hamdy O

- 463 Comparative efficacy of sodium glucose cotransporter-2 inhibitors in the management of type 2 diabetes mellitus: A real-world experience

Islam L, Jose D, Alkhalifah M, Blaibel D, Chandrabalan V, Pappachan JM

#### Clinical and Translational Research

- 475 Dietary fiber intake and its association with diabetic kidney disease in American adults with diabetes: A cross-sectional study

Jia XH, Wang SY, Sun AQ

#### Basic Study

- 488 MicroRNA-630 alleviates inflammatory reactions in rats with diabetic kidney disease by targeting toll-like receptor 4

Wu QS, Zheng DN, Ji C, Qian H, Jin J, He Q

- 502 Jianpi Gushen Huayu decoction ameliorated diabetic nephropathy through modulating metabolites in kidney, and inhibiting TLR4/NF- $\kappa$ B/NLRP3 and JNK/P38 pathways

Ma ZA, Wang LX, Zhang H, Li HZ, Dong L, Wang QH, Wang YS, Pan BC, Zhang SF, Cui HT, Lv SQ

- 519 Diabetes and high-glucose could upregulate the expression of receptor for activated C kinase 1 in retina

Tan J, Xiao A, Yang L, Tao YL, Shao Y, Zhou Q

- 530 Potential application of *Nardostachys Radix et Rhizoma*-Rhubarb for the treatment of diabetic kidney disease based on network pharmacology and cell culture experimental verification

Che MY, Yuan L, Min J, Xu DJ, Lu DD, Liu WJ, Wang KL, Wang YY, Nan Y

#### SYSTEMATIC REVIEWS

- 552 KCNQ1 rs2237895 gene polymorphism increases susceptibility to type 2 diabetes mellitus in Asian populations

Li DX, Yin LP, Song YQ, Shao NN, Zhu H, He CS, Sun JJ

**LETTER TO THE EDITOR**

- 565** Chiglitazar and Thiazolidinedione in patients with type 2 diabetes: Which is better?  
*Reddy KS, Gaur A, Varatharajan S, Morya AK*
- 568** Effects of vitamin family members on insulin resistance and diabetes complications  
*Chen HJ, Wang M, Zou DM, Liang GY, Yang SY*
- 572** Regulatory role of peroxynitrite in advanced glycation end products mediated diabetic cardiovascular complications  
*Bala A*

ABOUT COVER

Editorial Board Member of *World Journal of Diabetes*, Jun-Ling Shi, PhD, Professor, School of Life Sciences, Northwestern Polytechnical University, Xi'an 710072, Shaanxi Province, China. sjlshi2004@nwpu.edu.cn

AIMS AND SCOPE

The primary aim of *World Journal of Diabetes* (*WJD*, *World J Diabetes*) is to provide scholars and readers from various fields of diabetes with a platform to publish high-quality basic and clinical research articles and communicate their research findings online.

*WJD* mainly publishes articles reporting research results and findings obtained in the field of diabetes and covering a wide range of topics including risk factors for diabetes, diabetes complications, experimental diabetes mellitus, type 1 diabetes mellitus, type 2 diabetes mellitus, gestational diabetes, diabetic angiopathies, diabetic cardiomyopathies, diabetic coma, diabetic ketoacidosis, diabetic nephropathies, diabetic neuropathies, Donohue syndrome, fetal macrosomia, and prediabetic state.

INDEXING/ABSTRACTING

The *WJD* is now abstracted and indexed in Science Citation Index Expanded (SCIE, also known as SciSearch®), Current Contents/Clinical Medicine, Journal Citation Reports/Science Edition, PubMed, PubMed Central, Reference Citation Analysis, China Science and Technology Journal Database, and Superstar Journals Database. The 2023 Edition of Journal Citation Reports® cites the 2022 impact factor (IF) for *WJD* as 4.2; IF without journal self cites: 4.1; 5-year IF: 4.5; Journal Citation Indicator: 0.69; Ranking: 51 among 145 journals in endocrinology and metabolism; and Quartile category: Q2.

RESPONSIBLE EDITORS FOR THIS ISSUE

Production Editor: *Yu-Xi Chen*; Production Department Director: *Xu Guo*; Editorial Office Director: *Jia-Ru Fan*.

NAME OF JOURNAL

*World Journal of Diabetes*

ISSN

ISSN 1948-9358 (online)

LAUNCH DATE

June 15, 2010

FREQUENCY

Monthly

EDITORS-IN-CHIEF

Lu Cai, Md. Shahidul Islam, Michael Horowitz

EDITORIAL BOARD MEMBERS

<https://www.wjgnet.com/1948-9358/editorialboard.htm>

PUBLICATION DATE

March 15, 2024

COPYRIGHT

© 2024 Baishideng Publishing Group Inc

INSTRUCTIONS TO AUTHORS

<https://www.wjgnet.com/bpg/gerinfo/204>

GUIDELINES FOR ETHICS DOCUMENTS

<https://www.wjgnet.com/bpg/GerInfo/287>

GUIDELINES FOR NON-NATIVE SPEAKERS OF ENGLISH

<https://www.wjgnet.com/bpg/gerinfo/240>

PUBLICATION ETHICS

<https://www.wjgnet.com/bpg/GerInfo/288>

PUBLICATION MISCONDUCT

<https://www.wjgnet.com/bpg/gerinfo/208>

ARTICLE PROCESSING CHARGE

<https://www.wjgnet.com/bpg/gerinfo/242>

STEPS FOR SUBMITTING MANUSCRIPTS

<https://www.wjgnet.com/bpg/GerInfo/239>

ONLINE SUBMISSION

<https://www.f6publishing.com>



## Observational Study

# Comparative efficacy of sodium glucose cotransporter-2 inhibitors in the management of type 2 diabetes mellitus: A real-world experience

Lubna Islam, Dhanya Jose, Mohammed Alkhalifah, Dania Blaibel, Vishnu Chandrabalan, Joseph M Pappachan

**Specialty type:** Endocrinology and metabolism

**Provenance and peer review:**

Invited article; Externally peer reviewed.

**Peer-review model:** Single blind

**Peer-review report's scientific quality classification**

Grade A (Excellent): A  
Grade B (Very good): B  
Grade C (Good): 0  
Grade D (Fair): 0  
Grade E (Poor): 0

**P-Reviewer:** Cai L, United States;  
Liu Y, China

**Received:** October 28, 2023

**Peer-review started:** October 28, 2023

**First decision:** December 29, 2023

**Revised:** January 2, 2024

**Accepted:** February 18, 2024

**Article in press:** February 18, 2024

**Published online:** March 15, 2024



**Lubna Islam, Mohammed Alkhalifah, Dania Blaibel, Joseph M Pappachan**, Department of Endocrinology and Metabolism, Lancashire Teaching Hospitals NHS Trust, Preston PR2 9HT, United Kingdom

**Dhanya Jose**, Department of Community Medicine, Goa Medical College, Goa 403202, India

**Mohammed Alkhalifah**, Department of Family Medicine, King Faisal Specialist Hospital, Riyadh 11564, Saudi Arabia

**Vishnu Chandrabalan**, Department of Data Science, Lancashire Teaching Hospitals NHS Trust, Preston PR2 9HT, United Kingdom

**Joseph M Pappachan**, Faculty of Science, Manchester Metropolitan University, All Saints Building, Manchester M15 6BH, United Kingdom

**Joseph M Pappachan**, Faculty of Biology, Medicine and Health, The University of Manchester, Manchester M13 9PL, United Kingdom

**Corresponding author:** Joseph M Pappachan, MD, FRCP, Academic Editor, Consultant Endocrinologist, Professor, Senior Researcher, Department of Endocrinology and Metabolism, Lancashire Teaching Hospitals NHS Trust, Sharoe Green Lane, Preston PR2 9HT, United Kingdom. [drpappachan@yahoo.co.in](mailto:drpappachan@yahoo.co.in)

## Abstract

### BACKGROUND

Sodium glucose cotransporter-2 inhibitors (SGLT-2i) are a class of drugs with modest antidiabetic efficacy, weight loss effect, and cardiovascular benefits as proven by multiple randomised controlled trials (RCTs). However, real-world data on the comparative efficacy and safety of individual SGLT-2i medications is sparse.

### AIM

To study the comparative efficacy and safety of SGLT-2i using real-world clinical data.

### METHODS

We evaluated the comparative efficacy data of 3 SGLT-2i drugs (dapagliflozin, canagliflozin, and empagliflozin) used for treating patients with type 2 diabetes mellitus. Data on the reduction of glycated hemoglobin (HbA1c), body weight,



blood pressure (BP), urine albumin creatinine ratio (ACR), and adverse effects were recorded retrospectively.

## RESULTS

Data from 467 patients with a median age of 64 (14.8) years, 294 (62.96%) males and 375 (80.5%) Caucasians were analysed. Median diabetes duration was 16.0 (9.0) years, and the duration of SGLT-2i use was 3.6 (2.1) years. SGLT-2i molecules used were dapagliflozin 10 mg ( $n = 227$ ; 48.6%), canagliflozin 300 mg ( $n = 160$ ; 34.3%), and empagliflozin 25 mg ( $n = 80$ ; 17.1). Baseline median (interquartile range) HbA1c in mmol/mol were: dapagliflozin - 78.0 (25.3), canagliflozin - 80.0 (25.5), and empagliflozin - 75.0 (23.5) respectively. The respective median HbA1c reduction at 12 months and the latest review (just prior to the study) were: 66.5 (22.8) & 69.0 (24.0), 67.0 (16.3) & 66.0 (28.0), and 67.0 (22.5) & 66.5 (25.8) respectively ( $P < 0.001$  for all comparisons from baseline). Significant improvements in body weight (in kilograms) from baseline to study end were noticed with dapagliflozin - 101 (29.5) to 92.2 (25.6), and canagliflozin 100 (28.3) to 95.3 (27.5) only. Significant reductions in median systolic and diastolic BP, from 144 (21) mmHg to 139 (23) mmHg; ( $P = 0.015$ ), and from 82 (16) mmHg to 78 (19) mmHg; ( $P < 0.001$ ) respectively were also observed. A significant reduction of microalbuminuria was observed with canagliflozin only [ACR 14.6 (42.6) at baseline to 8.9 (23.7) at the study end;  $P = 0.043$ ]. Adverse effects of SGLT-2i were as follows: genital thrush and urinary infection - 20 (8.8%) & 17 (7.5%) with dapagliflozin; 9 (5.6%) & 5 (3.13%) with canagliflozin; and 4 (5%) & 4 (5%) with empagliflozin. Diabetic ketoacidosis was observed in 4 (1.8%) with dapagliflozin and 1 (0.63%) with canagliflozin.

## CONCLUSION

Treatment of patients with SGLT-2i is associated with statistically significant reductions in HbA1c, body weight, and better than those reported in RCTs, with low side effect profiles. A review of large-scale real-world data is needed to inform better clinical practice decision making.

**Key Words:** Sodium glucose cotransporter-2 inhibitors; Empagliflozin; Canagliflozin; Dapagliflozin; Type 2 diabetes mellitus; Cardiovascular disease; Albumin creatinine ratio; Diabetesity

©The Author(s) 2024. Published by Baishideng Publishing Group Inc. All rights reserved.

**Core Tip:** Treatment of type 2 diabetes mellitus with sodium glucose cotransporter-2 inhibitors (SGLT-2i) is associated with significant glycated hemoglobin (HbA1c) reduction, body weight loss, and cardiovascular benefits as proven by multiple randomised controlled trials (RCTs). Our real-world data analysis of the efficacy and safety of individual SGLT-2i revealed better reduction of HbA1c with dapagliflozin, canagliflozin, and empagliflozin, while better body weight reduction was seen only with dapagliflozin and canagliflozin when compared to RCTs. Blood pressure reduction, and side effect profiles were comparable to previous studies. A significant improvement of albuminuria was obvious only with canagliflozin, presumably because of the low number of participants in this study. Analyses of various large-scale real-world data are expected to inform better clinical practice decision making in future.

**Citation:** Islam L, Jose D, Alkhalifah M, Blaibel D, Chandrabalan V, Pappachan JM. Comparative efficacy of sodium glucose cotransporter-2 inhibitors in the management of type 2 diabetes mellitus: A real-world experience. *World J Diabetes* 2024; 15(3): 463-474

**URL:** <https://www.wjgnet.com/1948-9358/full/v15/i3/463.htm>

**DOI:** <https://dx.doi.org/10.4239/wjd.v15.i3.463>

## INTRODUCTION

Sodium glucose cotransporter-2 inhibitors (SGLT-2i) belong to a class of new antidiabetic drugs with mainly extra-pancreatic mechanism of actions to control hyperglycemia predominantly by enhancing renal glycosuria. Even in nondiabetic individuals, these agents can cause a daily loss of about 80 g of glucose through the kidneys, which is much higher in individuals with hyperglycemia, and therefore, SGLT-2i possess moderate antidiabetic efficacy[1]. Glycosuria also results in a net body energy deficit (the reason why SGLT-2i causes weight loss), and osmotic diuresis as consequence - the additional benefits of these medications. The weight loss benefit makes this class of drugs an attractive treatment option for patients with type 2 diabetes mellitus (T2DM) and diabetesity - diabetes because of obesity[2,3]. Moderate improvement in glycemic control with a reduction in glycated hemoglobin (HbA1c) is seen with the use of these drugs[1-11]. Multiple randomised controlled trials (RCTs) and meta-analyses have proven that SGLT-2i use is associated with cardiovascular benefits not only for primary prevention but also for the management of established cardiovascular disease[4-11]. Multiple studies also revealed the remarkable nephroprotective effects of this class of medications[10-14].

Although there are multiple clinical trials and prospective cohort studies examining the cardiovascular, renal, and diabetesity outcomes of individual SGLT-2i molecules, making them drugs of choice in day-to-day management of patients

with T2DM and multiple comorbidities related to diabetes, the comparative data on the efficacy of each molecule are rather sparse in the global scientific literature. As clinical trial and prospective cohort study settings are appropriately supervised and often rigorously controlled by the study teams, the data captured by these methods may not always reflect the actual real-world clinic picture when we consider the study outcomes. Therefore, we should have adequate real-world data from our own day-to-day clinical practice to truly appraise the actual long-term benefits of SGLT-2i and to help therapeutic decision making for our T2DM patients with multi-comorbidities. The current study was designed to suit this purpose in a large academic teaching hospital in the United Kingdom.

## MATERIALS AND METHODS

### *Study design & settings*

This is a retrospective clinical study by review of the data of all patients treated with any one of the SGLT-2i drug, empagliflozin, canagliflozin, or dapagliflozin between 1<sup>st</sup> July 2016 and 30<sup>th</sup> June 2022 at Lancashire Teaching Hospitals NHS Trust. The diabetes service of this hospital provides comprehensive diabetic care for patients in the Central Lancashire and South Cumbria regions of the United Kingdom, catering a population of about 0.4 million people. The study was approved by the institutional research committee (No: KB/PB/SE-387/2022).

### *SGLT-2i molecules used and the dosages*

The standard practice of using the SGLT-2i molecules in the hospital was to start with lower doses (daily dose of dapagliflozin at 5 mg, empagliflozin at 10 mg and canagliflozin at 100 mg) and subsequently to increase the dose to full strength of the drug (dapagliflozin 10 mg, empagliflozin 25 mg, and canagliflozin 300 mg, respectively) after a month with monitoring of renal functions just prior to the dose increment.

### *Participants*

All adult patients (age  $\geq 18$  years) with T2DM treated by one of the above three SGLT-2i molecule for management of their diabetes were considered for inclusion in the study.

### *Data capture*

Electronic records were searched for all patients with a diagnosis of DM treated with antidiabetic medications of the SGLT-2i class during the study period. The total number of cases in this category was further reviewed for inclusion in the study.

### *Inclusion criteria*

Patients with a diagnosis of T2DM managed with one of the SGLT-2i. Participants with predefined primary outcome measures (HbA1c alteration from baseline values at follow-up) and/or secondary outcomes such as alterations in body weight  $\pm$  body mass index (BMI), blood pressure (BP), renal functions, and urine albumin creatinine ratio (ACR) - all these outcomes with meaningful data in at least one of the follow-up period (6 months, 12 months and/or at the last follow up just prior to the study), and/or the development of adverse events [such as genital thrush, urinary tract infections (UTI) or diabetic ketoacidosis (DKA)].

### *Exclusion criteria*

Patients with T1DM. Incomplete study data to obtain meaningful outcome measures as specified above. Follow up duration less than 6 months. SGLT-2i commenced primarily for patients for other indications (such as heart failure or CKD) without T2DM or diet controlled T2DM. Discontinuation of SGLT-2i within 6 months of initiation for any reason including major adverse events such as DKA, recurrent genital thrush, allergy reactions or UTI.

### *Data management*

Two junior doctors, under the supervision of a senior academic, recorded the relevant study information using a Microsoft Excel data sheet by entering the demographic, clinical, biochemical, and follow-up data of all study subjects from their electronic case records retrieved with the help of a senior data scientist of the hospital.

### *Statistical analysis*

Initially, each quantitative trait was tested for normality of distribution using the Shapiro-Wilk normality test. Continuous variables were expressed as median and interquartile range (IQR), and categorical variables as numbers and percentages. The nonparametric Wilcoxon signed-rank test was used for within-group quantitative differences, whereas the two-tailed Fisher's exact test was used to compare proportions. Spearman's rank correlation analysis was used to explore the correlation between the safety and efficacy of SGLT-2 inhibitors with clinical and biochemical parameters. Kruskal Wallis nonparametric test was used to compare the relationship between continuous variables in different SGLT-2i drugs. The  $\chi^2$  test is used for finding the association between two categorical variables. A *P*-value of  $< 0.05$  (two-tailed) was considered statistically significant. Data were analyzed with Jamovi Software, Version 2.3.21.0 (based on the R program) and BlueSky Statistics Version 10.0, R package version 8.0.



## RESULTS

### **Clinical and biochemical baseline characteristics of SGLT-2i-treated patients**

Among a total of 562 patients treated with SGLT-2i during the study period, 467 T2DM patients had meaningful data for analysis of primary and or secondary outcomes. Table 1 shows the main clinical and biochemical characteristics of these subjects. Out of these patients, 160 (34.3%) were on canagliflozin, 227 (48.6%) on dapagliflozin, and 80 (17.1%) on empagliflozin. All these patients were using the full standard recommended doses of individual SGLT-2i molecules.

### **Efficacy of SGLT-2i on glycemic control (primary outcome)**

The median duration of SGLT-2i therapy was 3.6 (2.1) years. An overall median HbA1c reduction from 78 (26) mmol/mol to 68 (26) mmol/mol ( $P < 0.001$ ) was observed with the drug treatment. In other words, we observed a median HbA1c reduction of -10 (IQR 25) mmol/mol, with a percentage decrease of 12.82% from the baseline value, indicating moderate antidiabetic efficacy of this class of oral agents. During this treatment period, a significant reduction in HbA1c levels was observed, with a more pronounced decrease in HbA1c during the first six months of SGLT-2i use.

### **Secondary outcomes of SGLT-2i treatment**

Considering the secondary outcomes, a median body weight reduction from 99 (29) kg to 95.5 (30.3) kg; ( $P < 0.001$ ) in the first 6 months, with a further reduction to 92.4 kg (median with IQR 27.3) at the latest measurement, and this decrease paralleled the median reduction in BMI: from 34 (7.58) to 33 (7.47) kg/m<sup>2</sup> ( $P < 0.001$ ). Significant reductions in median systolic BP, from 144 (21) mmHg to 139 (23) mmHg ( $P = 0.015$ ), and median diastolic BP from 82 (16) mmHg to 78 (19) mmHg ( $P < 0.001$ ) were also observed. Although a significant reduction in median estimated glomerular filtration rate (eGFR) from 88 (17) mL/min to 86.5 (18) mL/min ( $P < 0.001$ ) at the 6 months' follow up after the SGLT-2i commencement, an improvement to 87 (18) mL/min at 12 months, and maintenance at that level median eGFR: 87 (21) mL/min at latest follow up was noticed. No statistically significant differences were observed in other biochemical parameters like serum creatine and gamma glutamyl transpeptidase were observed at any follow up periods.

### **Treatment outcomes with individual SGLT-2i molecules**

The primary outcome (HbA1c reduction) with each SGLT-2i drug is shown in Figure 1 and the composite treatment outcomes in Tables 2-4. The median weight changes with the individual SGLT-2i drug molecule are shown in Figure 2 and the gender-specific latest weight is shown in the Figure 3.

### **Subgroup analysis**

Only 98 participants had microalbuminuria at baseline and meaningful follow up data of urine ACR for analysis. Of these subjects, only those on canagliflozin showed a statistically significant reduction of albuminuria at the latest follow up, though dapagliflozin showed a significant reduction in ACR at 6 and 12 months follow up periods (Figure 4).

### **Adverse events of treatment**

A total of 64 (13.7%) participants developed adverse events with the use of SGLT-2i therapy [genital thrush in 46 (9.9%), UTI in 11 (2.36%), and DKA in 5 (1.07%) cases]. Adverse effects of individual SGLT-2i molecules were as follows: Genital thrush and urinary infection - 20 (8.8%) & 17 (7.5%) participants with dapagliflozin; 9 (5.6%) & 5 (3.13%) participants with canagliflozin; and 4 (5%) & 4 (5%) participants with empagliflozin. DKA was observed in 4 (1.8%) participants with dapagliflozin and 1 (0.63%) participant with canagliflozin. No participant on empagliflozin developed DKA.

### **Risk factor for DKA**

Explanatory data analysis using box plot showed that a high baseline and follow-up HbA1c levels were correlated with higher risk for DKA (Figure 5). While a baseline median HbA1C of  $\geq 109$  (18) mmol/mol was associated with higher risk of DKA, an HbA1C of  $< 78$  (25) mmol/mol is appeared to confer protection from DKA. Similarly, median HbA1c at 12 months  $\geq 81$  (4) mmol/mol was associated with DKA, HbA1c level at 12 months  $< 67$  (20) mmol/mol was associated with protection from DKA.

## DISCUSSION

In this retrospective cohort study involving 467 participants with a median duration of T2DM of 16 (9) years treated for a median duration of 3.6 (2.1) years with various SGLT2i medications, we observed statistically significant improvements in glycemic, metabolic, and other cardiovascular outcomes known to occur with the use of this class of drugs in previous clinical studies. The median HbA1c reduction observed from baseline was 10-14 mmol/mol with these drug use at various follow up periods. Significant and persistent improvements in body weight from baseline to the study end were noticed with dapagliflozin (8.8 kg) and canagliflozin (4.7 kg). Though empagliflozin use was associated with significant weight loss at six (6 kg) and 12 months (9.2 kg) there was a regain of weight (see Table 4) at latest follow up. Significant reduction of microalbuminuria was observed with canagliflozin only [ACR 14.6 (42.6) at baseline to 8.9 (23.7) at study end]. The observed adverse effects with the use of SGLT-2i were not unacceptably high in our study. High baseline and follow up HbA1c levels predicted the risk of ketoacidosis.

**Table 1 Baseline clinical and biochemical characteristics of 467 type 2 diabetes mellitus patients treated with sodium glucose cotransporter 2 inhibitors.**

Baseline features	n (%) or median (IQR)
Female gender	173 (37.04%)
Age (yr)	64 (14.8)
<b>Ethnicity</b>	
British white	338 (72.37%)
Diabetes duration (yr)	16 (9)
Diabetes duration $\geq$ 10 yr	335 (71.73%)
Years of treatment with SGLT2i	3.6 (2.1)
Body weight (kg)	99 (29)
BMI ( $\text{kg}/\text{m}^2$ )	34 (7.58)
<b>BP (mmHg)</b>	
Systolic	144 (21)
Diastolic	82 (16)
HbA1c (mmol/mol)	78 (25.5)
Serum creatinine ( $\mu\text{mol}/\text{L}$ )	74 (21)
eGFR ( $\text{mL}/\text{min}/\text{m}^2$ )	88.5 (17)
Urine ACR	2.1 (3.95)
GGT	38 (0)
<b>Concomitant medications</b>	
Basal-bolus (novorapid + long-acting insulin)	32 (18.7)
Mixed insulin (novomix-30 insulin)	53 (26.4)
Long-acting insulin (lemevir, toujeo, lantus, tresiba, absalgar)	83 (38.1)
Metformin	377 (83.9)
Sulfonylurea (glimepiride/glyburide/glipizide)	199 (44.7)
DPP4 inhibitors (sitagliptin, saxagliptin, linagliptin, or alogliptin)	130 (29.1)
Pioglitazone	22 (5)
GLP1 inhibitor (dulaglutide, exanatide, semaglutide, liraglutide)	94 (20.9)

SGLT2i: Sodium glucose cotransporter-2 inhibitor; IQR: Interquartile range; BMI: Body mass index; BP: Blood pressure; HbA1c: Glycated hemoglobin; eGFR: Estimated glomerular filtration rate; ACR: Albumin creatinine ratio; GGT: Gamma glutamyl transpeptidase; DPP4: Dipeptidyl-peptidase 4; GLP1: Glucagon like peptide 1.

Dapagliflozin was the commonest SGLT-2i molecule used in our cohort. A recent meta-analysis using pooled data from 8 clinical trials involving 3747 patients showed that its use is associated with a mean HbA1c reduction of 0.59% (approximately 7 mmol/mol)[15] though the first clinical trial (as an add-on therapy to metformin) with the molecule showed a better HbA1c reduction of 0.84% (approximately 9.5 mmol/mol)[16]. We observed a median HbA1c reduction of 10, 11.5 and 9 mmol/mol respectively at 6, 12 and last (median 3.6 years) follow up periods indicating a better treatment response than that were seen in the clinical trials. The better efficacy in glycemic control we observed may be related to the poorer baseline glycemic control (high baseline HbA1c) in our patients, a usual feature in the real-world settings compared to the strictly controlled clinical trial settings where some degree of selection bias is expected with participants likely having better baseline glycemic parameters. Moreover, a significant chunk of our patients was already on multiple antidiabetic agents at the time of addition of dapagliflozin where some drug synergism is expected. The efficacy of dapagliflozin appears to be better even in the clinical trial settings when baseline glycemic control is poor (with an observed mean HbA1c reduction of 12 mmol/mol at 24 wk), and the drug is used as an add-on therapy as observed in a recent study[17].

We observed much better weight reduction with the use of dapagliflozin in our cohort (median -8.8 kg at last follow up) compared to a weight reduction observed in the meta-analysis (-1.88 kg) by Pinto *et al*[15]. More profound weight loss observed in our study may be related to the poor baseline glycemic control in our cohort and multicomination antidiabetic drug therapy. Patients with poorer diabetes control are likely to have more profound glycosuria and the

**Table 2 Follow-up metabolic/clinical/lab parameters for dapagliflozin**

Clinical/lab/parameter	Baseline, median (IQR; n)	6 months F/U, median (IQR; n)	12 months, median (IQR; n)	Latest, median (IQR; n)	P value (baseline vs latest)
HbA1c	78 (25.3; 227)	68 (25; 204) <sup>a</sup>	66.5 (22.8; 190) <sup>b</sup>	69 (24; 191)	< 0.001
Weight	101 (29.5; 198)	95.4 (28.2; 150) <sup>a</sup>	95.9 (29.2; 144) <sup>a</sup>	92.2 (25.6; 93)	< 0.001
BMI	33.7 (6.6; 81)	-	-	33.9 (6.38; 44)	0.002
Systolic BP	145 (21.3; 185)	-	142 (23; 159)	142 (23.3; 112)	0.080
Diastolic BP	84 (14; 185)	-	80 (14; 159) <sup>b</sup>	80 (19.3; 112)	< 0.001
Albuminuria (> 3 mmol/mg)	5.2 (17.4; 39)	3 (14.9; 24) <sup>a</sup>	2.1 (6.38; 18) <sup>a</sup>	4.4 (11.9; 30)	0.063

<sup>a</sup>P < 0.05.<sup>b</sup>P < 0.01.

BMI: Body mass index; BP: Blood pressure; HbA1c: Glycated hemoglobin; IQR: Interquartile range.

**Table 3 Follow-up metabolic/clinical/lab parameters for canagliflozin**

Clinical/lab/parameter	Baseline, median (IQR; n)	6 months F/U, median (IQR; n)	12 months, median (IQR; n)	Latest, median (IQR; n)	P value (baseline vs latest)
HbA1c	80 (25.5; 160)	67.5 (20; 132) <sup>b</sup>	67 (16.3; 128) <sup>b</sup>	66 (28; 135)	< 0.001
Weight	100 (28.3; 125)	97.6 (27.5; 91) <sup>a</sup>	98.3 (30.4; 74)	95.3 (27.5; 58)	< 0.001
BMI	35.1 (8.1; 73)	-	-	32.5 (9.38; 50)	< 0.001
Systolic BP	145 (18; 121)	-	145 (21.3; 84)	138 (22.8; 64)	0.041
Diastolic BP	84 (18; 121)	-	80.5 (11.2; 84) <sup>a</sup>	79.5 (19; 64)	0.013
Albuminuria (> 3 mmol/mg)	14.1 (42.6; 40)	17.1 (30.4; 12)	7.3 (12.3; 21) <sup>a</sup>	8.9 (23.7; 28)	0.043

<sup>a</sup>P < 0.05.<sup>b</sup>P < 0.01.

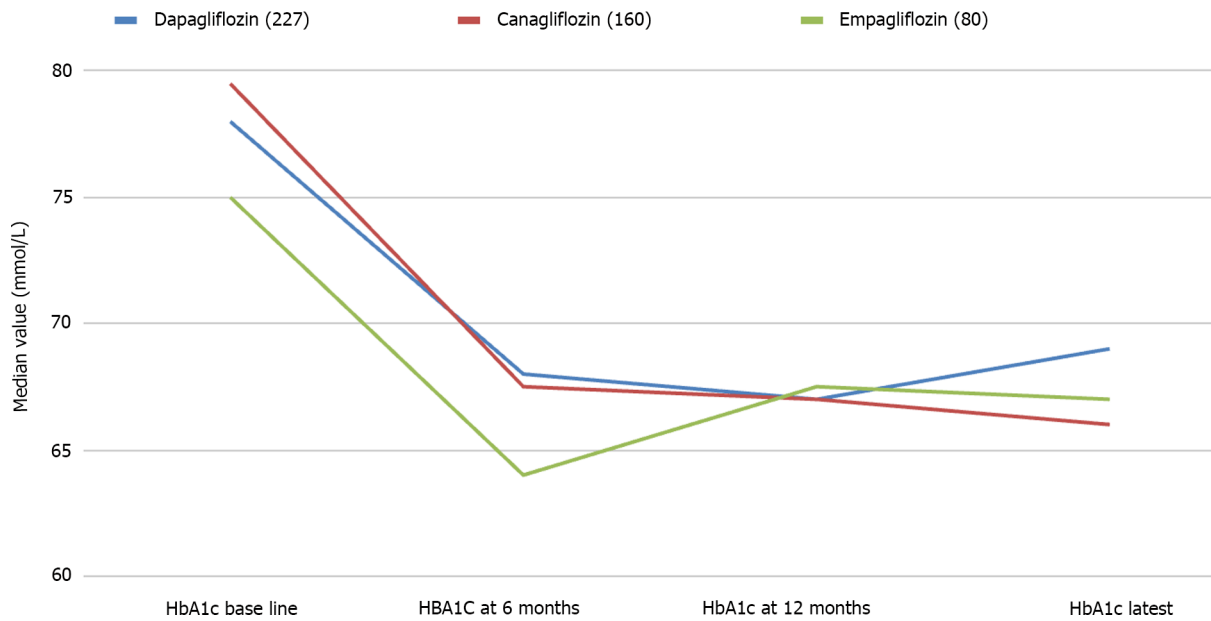
BMI: Body mass index; BP: Blood pressure; HbA1c: Glycated hemoglobin; IQR: Interquartile range.

**Table 4 Follow-up metabolic/clinical/lab parameters for empagliflozin**

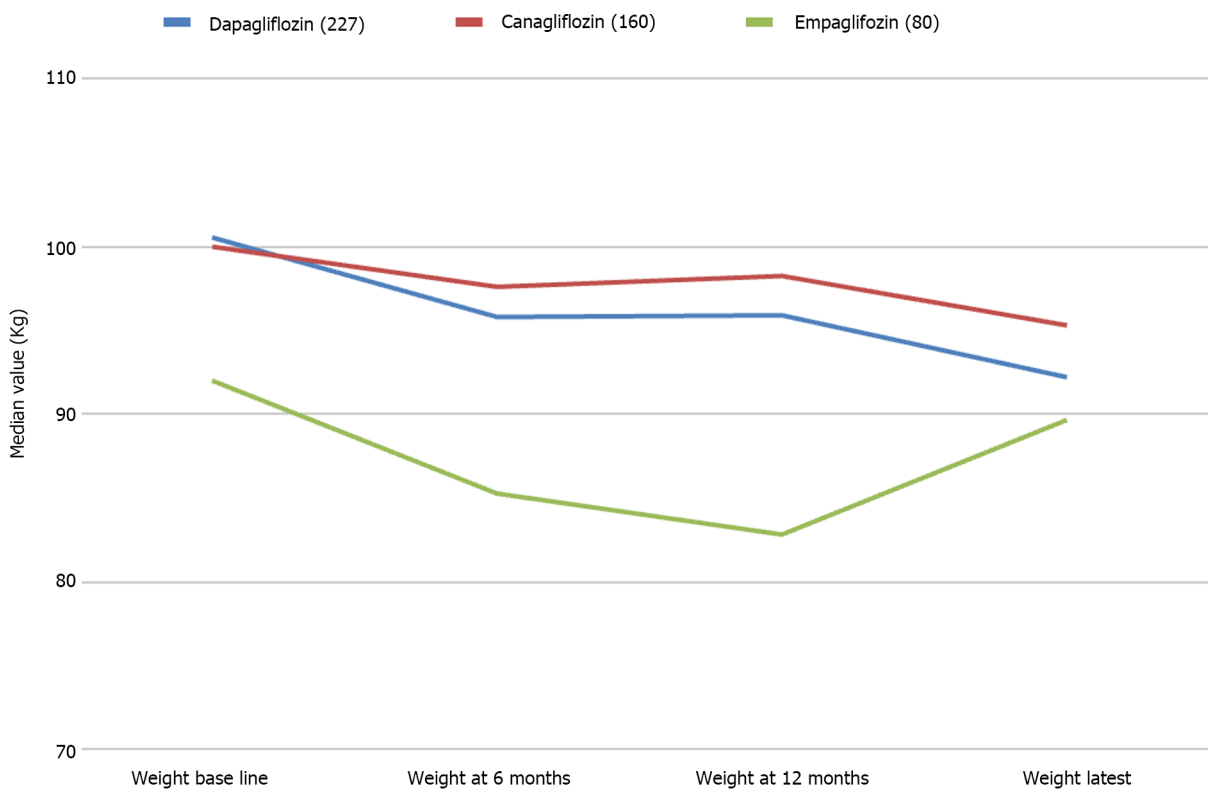
Clinical/lab/parameter	Baseline, median (IQR; n)	6 months F/U, median (IQR; n)	12 months, median (IQR; n)	Latest, median (IQR; n)	P value (baseline vs latest)
HbA1c	75 (23.5; 80)	64.5 (25; 64) <sup>b</sup>	67 (22.5; 59) <sup>a</sup>	66.5 (25.8; 66)	0.002
Weight	92 (27.5; 57)	86 (22.8; 29) <sup>a</sup>	82.8 (20.9; 20) <sup>b</sup>	89.7 (27.5; 20)	0.207
BMI	33.7 (9.92; 24)	-	-	32.4 (5.57; 6)	0.10
Systolic BP	136 (24.3; 52)	-	137 (26; 23)	130 (25.3; 32)	0.096
Diastolic BP	74 (14.5; 52)	-	74 (16; 23)	75.5 (12.5; 32)	0.187
Albuminuria (> 3 mmol/mg)	6.4 (15; 19)	6.2 (11.8; 7)	3.2 (2.98; 6)	5.9 (2.35; 11)	0.79

<sup>a</sup>P < 0.05.<sup>b</sup>P < 0.01.

BMI: Body mass index; BP: Blood pressure; HbA1c: Glycated hemoglobin; IQR: Interquartile range.

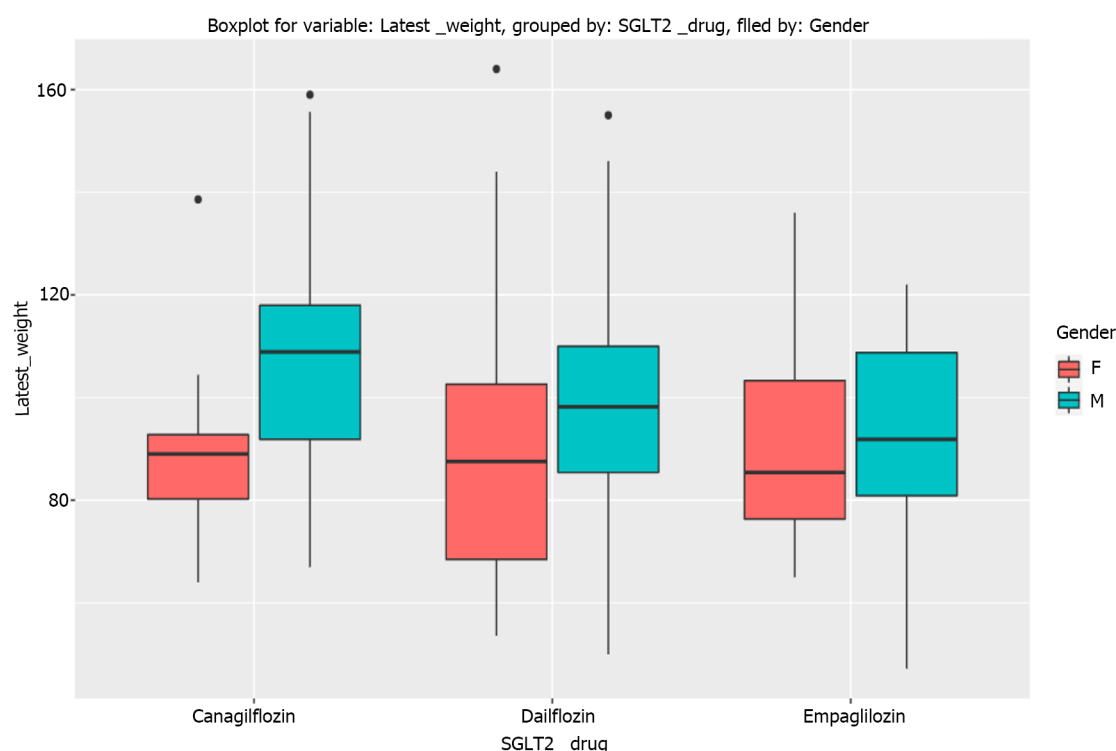


**Figure 1** Changes of glycated hemoglobin from baseline at 6 months, 12 months, and latest with various sodium glucose cotransporter 2 inhibiting agents: Dapagliflozin, canagliflozin, and empagliflozin. HbA1c: Glycated hemoglobin.

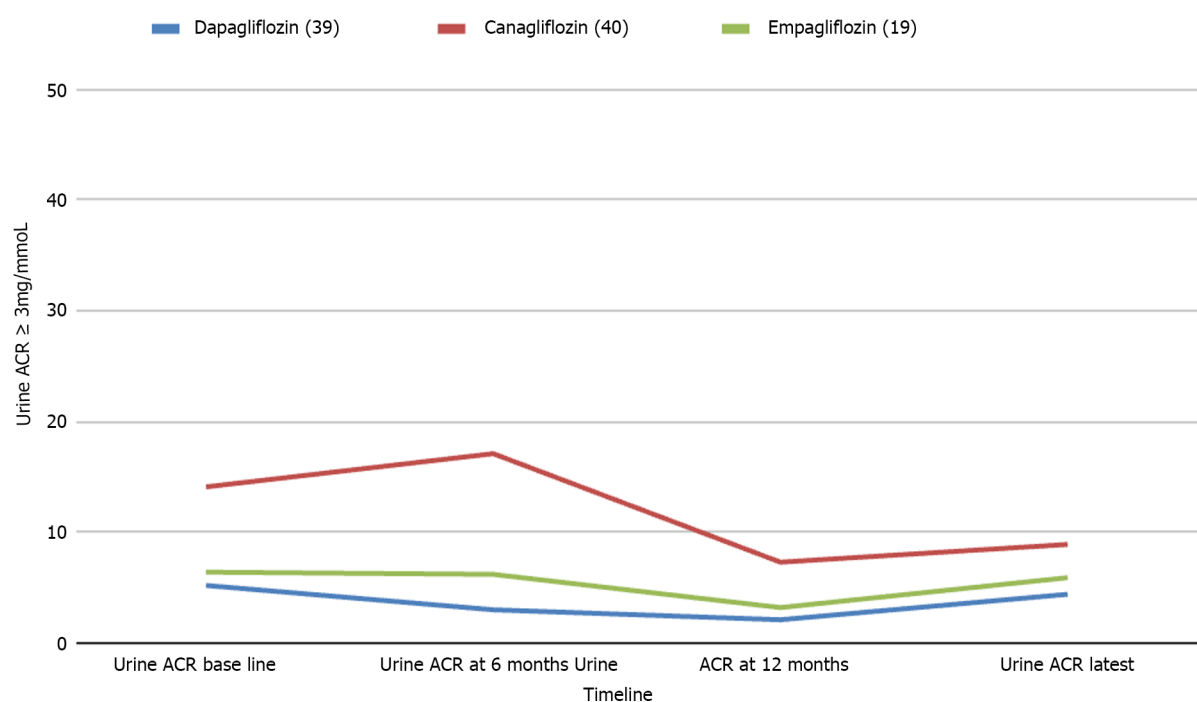


**Figure 2** Weight changes, from baseline to latest follow up period with dapagliflozin, canagliflozin, and empagliflozin.

related negative energy balance from SGLT-2i as evidenced by previous studies with greater weight loss and better average HbA1c reduction as a consequence[18-20], supporting our observations. Although the systolic BP reduction following treatment did not reach statistical significance ( $P = 0.08$ ) possibly because of the low number of participants in our cohort, a tendency towards significance in this study supports the beneficial effects of dapagliflozin as shown by other studies[21,22]. The significant reduction in diastolic BP observed in this cohort is also in agreement with the observations from other studies[23,24]. Although we observed significant reduction of albuminuria as observed by the DAPA-CKD trial[25], at 6 months and 12 months of follow up, the ACR reduction at the latest follow up did not reach statistical significance ( $P = 0.06$ ) presumably because of the relatively low number of participants in the cohort. The adverse events such as genital thrush and UTI were relatively high from dapagliflozin use as shown by a recent meta-

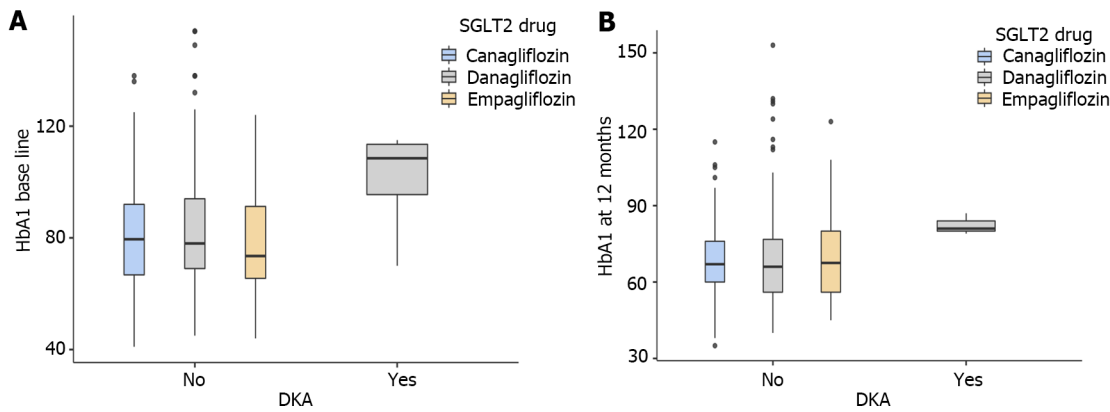


**Figure 3** Boxplots showing latest weight, with dapagliflozin, canagliflozin, and empagliflozin in male and female patients. SGLT2: Sodium glucose cotransporter 2; F: Female; M: Male.



**Figure 4** Trends in the urine albumin creatinine ratio among patients with baseline microalbuminuria (urine albumin creatinine ratio  $\geq 3$  mg/mmol). ACR: Albumin creatinine ratio.

analysis[26]. The tendency for DKA in those with poorer glycemic control observed in the dapagliflozin cohort is highly important in choosing this molecule for managing patients with T2DM. Patients with poor T2DM control are usually insulinopenic and often behave metabolically like those with T1DM[27]. Dapagliflozin use in T1DM patients was associated with a 3.4-fold higher risk of DKA compared to those T2DM patients treated with drug[28]. Therefore, as we observed in our cohort, anyone with a high HbA1c indicating poor glycemic control are at a greater risk of DKA, and clinicians should exercise caution in prescribing dapagliflozin in such patients.



**Figure 5** Boxplot analyses of baseline glycated hemoglobin vs diabetic ketoacidosis risk in individual sodium glucose cotransporter 2 inhibitor drugs at baseline and after 12 months. A: Box plot explanatory data analysis of baseline glycated hemoglobin (HbA1c) as a risk factor for diabetic ketoacidosis (DKA) with individual sodium glucose cotransporter 2 inhibitor (SGLT2i) drug showing a correlation between the two variables; B: Box plot data analysis of HbA1c level at 12 months as a risk factor for DKA with individual SGLT2i drug showing a correlation between the two variables. DKA: Diabetic ketoacidosis; HbA1c: Glycated hemoglobin; SGLT2: Sodium glucose cotransporter 2.

### Canagliflozin

As shown in various studies, canagliflozin use was associated with the maximum HbA1c reduction compared to the other 2 SGLT-2i agents in our study[15,29,30]. However, the median HbA1c reduction was higher than that observed in clinical trials and meta-analyses presumably from the reasons as mentioned above (see dapagliflozin section). Similarly, the weight reduction was also higher than those seen in various studies[15,29-31]. The reason for this also could same as explained above under dapagliflozin section. Interestingly, we found statistically significant reductions in both the systolic and diastolic BP in the canagliflozin group compared to the other 2 molecules.

Canagliflozin use also showed better and consistent reduction in albuminuria compared to the other two SGLT-2i molecules in our study. This could partly be explained by higher baseline ACR in those with albuminuria in the canagliflozin sub-cohort and low numbers of participants in the individual cohorts of the other two drugs in our study (would not have reached significance). Canagliflozin also possesses some inhibitory effect on SGLT-1 receptors which would have potentially helped to improve albuminuria in this cohort as suggested by a recent study[32]. Although ketoacidosis related to SGLT-2i therapy was found to be highest with canagliflozin use compared to other drugs in this class in a recent study[33], we found a lower risk compared to dapagliflozin use in our cohort. Data from more real-world studies might shed light on to the reason for this interesting new observation.

### Empagliflozin

Compared to the other two SGLT-2i molecules, the number of participants in the empagliflozin cohort was lower, and therefore some of the outcomes might not have reached statistical significance in the present study. Even then the HbA1c reduction was better for empagliflozin compared to the previous studies[15,29,34], possibly for the same reasons mentioned in the previous sections. For some unexplained reason, the tendency for weight reduction observed in this group at 6 and 12 months of follow up periods did not sustain at the latest follow up. The absence of significant BP reduction, improvement of albuminuria, and DKA in this group may be explained by low numbers in the sub-cohort.

### Limitations and strengths of the study

Our study has several limitations as seen in any retrospective data analysis. High attrition rate of cases during follow-up, incomplete data of several of the clinical and biochemical parameters studied, dissimilar numbers of participants in the treatment arms with the three SGLT-2i drugs (downgrading quality of statistical comparisons), and higher baseline HbA1c compared to many previously reported studies, might have reduced the overall quality at least some of the outcome analyses.

Although SGLT-2i drugs have shown to alter lipid parameters with a reduction in triglycerides and improvement of high-density lipoprotein, with a resultant improvement of metabolic syndrome[35], which may be one among the several reasons for their cardiovascular benefits, we could not procure adequate data on lipid parameters (baseline and during follow up period) for inclusion in this study. However, significant improvements in other cardiometabolic parameters like BP, body weight, BMI, and albuminuria make our study results impressive in predicting remarkable future cardiovascular benefits for our cohort.

Moreover, the study results show several unique features such as relatively long period of follow up of our cohort, reasonable record of many of the study parameters and the real-world data with some good comparative and contrasting features with previously reported studies makes our study reasonably robust and should help to inform evidence-based clinical decision-making process by physicians.



## CONCLUSION

The real-world use of SGLT-2i medications dapagliflozin, canagliflozin and empagliflozin is associated with significant improvements diabetes, cardiovascular outcomes such as BP reduction and improvement of microalbuminuria, all of which are expected to improve the cardiovascular morbidity and possibly mortality. The adverse effects are relatively low as observed in various clinical trials and meta-analyses. Caution should be exercised while treating T2DM patients with poor glycemic control and high baseline HbA1c with SGLT-2i because of higher risk of developing DKA. Data from larger real-world clinical studies are expected to inform clinical decision making in using SGLT-2i by practitioners more judiciously.

## ARTICLE HIGHLIGHTS

### Research background

Sodium glucose cotransporter-2 inhibitors (SGLT-2i) are antidiabetic medications with moderate efficacy in glycemic control, and a potential for weight loss through their glycosuric effects, which are helpful for patients with diabetes - diabetes consequent to obesity. Marked cardiovascular and reno-protective effects with the use of SGLT-2i were proven by multiple randomised controlled trials (RCTs), observational studies and various systematic reviews.

### Research motivation

Head-to-head comparison of the real-world data on the comparative efficacy and safety of individual SGLT-2i medications is rather sparse and needs more reports to appraise the benefits shown by the above studies.

### Research objectives

To procure the comparative efficacy, safety, and adverse effect profiles of SGLT2i drugs in the clinical practice settings to make better therapeutic decision making as RCTs and prospective observational studies are often biased with rigorous monitoring of patients and the study results that wouldn't always reflect the real-world medical practice.

### Research methods

We evaluated the comparative efficacy data of 3 SGLT-2i drugs (dapagliflozin, canagliflozin, and empagliflozin) at full doses, used for treating patients with type 2 diabetes mellitus (T2DM) only. Reduction of glycated hemoglobin, body weight, blood pressure, and urine albumin creatinine ratio were recorded, and the adverse effects were documented retrospectively from the clinical records.

### Research results

This real-world data from 467 patients with T2DM showed remarkable improvements in diabetes and cardiometabolic outcomes with all the three SGLT-2i agents with a tendency for renal protection (improvement of albuminuria) in those on canagliflozin. These drugs are reasonably safe with acceptably mild side effects profiles when used judiciously in patients with diabetes.

### Research conclusions

We found that SGLT-2i class of medications are very useful for the management of diabetes with improvements cardiometabolic outcomes in the real-world settings as proven by previous RCTs and observational studies.

### Research perspectives

Management of diabetes is often a clinical dilemma in the context of optimal glycemic control as several antidiabetic agents including insulins tend to cause weight gain with a potential for worsening of diabetes in a vicious cycle. SGLT-2i group of drugs improves glycemic control and cause weight loss when used in patients with diabetes. Moreover, SGLT-2i medications are useful in improving cardiometabolic outcomes and renal protection in patients with T2DM. We studied the comparative efficacy of dapagliflozin, empagliflozin and canagliflozin using a retrospective data from our hospital which revealed significant improvements in body weight, blood pressure, and glycated hemoglobin, with canagliflozin also showing improvement in albuminuria. They were also reasonably safe with acceptable side effect profile when used in the appropriate clinical context.

## FOOTNOTES

**Co-first authors:** Lubna Islam and Dhanya Jose.

**Author contributions:** Islam L, Alkhalifah M, and Blaibel D collected the clinical data; Jose D performed the statistical analysis and wrote the initial draft of the manuscript; Islam L performed the literature review, and interpretation of relevant data following statistical analysis; Islam L and Jose D helped revision and figure preparation for the paper and share the first authorship of the work; Alkhalifah M, Blaibel D, and Chandrabalan V contributed to the work with additional literature review and revision of the article critically for important intellectual content; Chandrabalan V also procured the patient data from the hospital electronic records; Pappachan JM

contributed to the conceptual design of the paper and critically supervised the whole drafting, literature review, revision and modifications of the paper including figure construction and is the final author; and all authors have read and approved the final version of the manuscript.

**Institutional review board statement:** The study was approved by the institutional research committee (No: KB/PB/SE-387/2022).

**Informed consent statement:** This is a retrospective cohort study performed by review of participants' electronic clinical records only and therefore, patient consent was not necessary and was not obtained.

**Conflict-of-interest statement:** All the authors report no relevant conflicts of interest for this article.

**Data sharing statement:** Authors are happy to share the data on request.

**STROBE statement:** The authors have read the STROBE Statement-checklist of items, and the manuscript was prepared and revised according to the STROBE Statement-checklist of items.

**Open-Access:** This article is an open-access article that was selected by an in-house editor and fully peer-reviewed by external reviewers. It is distributed in accordance with the Creative Commons Attribution NonCommercial (CC BY-NC 4.0) license, which permits others to distribute, remix, adapt, build upon this work non-commercially, and license their derivative works on different terms, provided the original work is properly cited and the use is non-commercial. See: <https://creativecommons.org/licenses/by-nc/4.0/>

**Country/Territory of origin:** United Kingdom

**ORCID number:** Joseph M Pappachan 0000-0003-0886-5255.

**S-Editor:** Wang JJ

**L-Editor:** A

**P-Editor:** Cai YX

## REFERENCES

- 1 Wanner C, Marx N. SGLT2 inhibitors: the future for treatment of type 2 diabetes mellitus and other chronic diseases. *Diabetologia* 2018; **61**: 2134-2139 [PMID: 30132035 DOI: 10.1007/s00125-018-4678-z]
- 2 Khor XY, Pappachan JM, Jeeyavudeen MS. Individualized diabetes care: Lessons from the real-world experience. *World J Clin Cases* 2023; **11**: 2890-2902 [PMID: 37215423 DOI: 10.12998/wjcc.v11.i13.2890]
- 3 Michaelidou M, Pappachan JM, Jeeyavudeen MS. Management of diabetes: Current concepts. *World J Diabetes* 2023; **14**: 396-411 [PMID: 37122433 DOI: 10.4239/wjd.v14.i4.396]
- 4 Zinman B, Wanner C, Lachin JM, Fitchett BL, Bluhmki E, Hantel S, Mattheus M, Devins T, Johansen OE, Woerle HJ, Broedl UC, Inzucchi SE; EMPA-REG OUTCOME Investigators. Empagliflozin, Cardiovascular Outcomes, and Mortality in Type 2 Diabetes. *N Engl J Med* 2015; **373**: 2117-2128 [PMID: 26378978 DOI: 10.1056/NEJMoa1504720]
- 5 Neal B, Perkovic V, Mahaffey KW, de Zeeuw D, Fulcher G, Erond N, Shaw W, Law G, Desai M, Matthews DR; CANVAS Program Collaborative Group. Canagliflozin and Cardiovascular and Renal Events in Type 2 Diabetes. *N Engl J Med* 2017; **377**: 644-657 [PMID: 28605608 DOI: 10.1056/NEJMoa1611925]
- 6 Wiviott SD, Raz I, Bonaca MP, Mosenzon O, Kato ET, Cahn A, Silverman MG, Zelniker TA, Kuder JF, Murphy SA, Bhatt DL, Leiter LA, McGuire DK, Wilding JPH, Ruff CT, Gause-Nilsson IAM, Fredriksson M, Johansson PA, Langkilde AM, Sabatine MS; DECLARE-TIMI 58 Investigators. Dapagliflozin and Cardiovascular Outcomes in Type 2 Diabetes. *N Engl J Med* 2019; **380**: 347-357 [PMID: 30415602 DOI: 10.1056/NEJMoa1812389]
- 7 McMurray JJV, Solomon SD, Inzucchi SE, Køber L, Kosiborod MN, Martinez FA, Ponikowski P, Sabatine MS, Anand IS, Bělohávek J, Böhm M, Chiang CE, Chopra VK, de Boer RA, Desai AS, Diez M, Drozd J, Dukát A, Ge J, Howlett JG, Katova T, Kitakaze M, Ljungman CEA, Merkely B, Nicolau JC, O'Meara E, Petrie MC, Vinh PN, Schou M, Tereshchenko S, Verma S, Held C, DeMets DL, Docherty KF, Jhund PS, Bengtsson O, Sjöstrand M, Langkilde AM; DAPA-HF Trial Committees and Investigators. Dapagliflozin in Patients with Heart Failure and Reduced Ejection Fraction. *N Engl J Med* 2019; **381**: 1995-2008 [PMID: 31535829 DOI: 10.1056/NEJMoa1911303]
- 8 Giugliano D, Bellastella G, Longo M, Scappaticcio L, Maiorino MI, Chiodini P, Esposito K. Relationship between improvement of glycaemic control and reduction of major cardiovascular events in 15 cardiovascular outcome trials: A meta-analysis with meta-regression. *Diabetes Obes Metab* 2020; **22**: 1397-1405 [PMID: 32250550 DOI: 10.1111/dom.14047]
- 9 Vaduganathan M, Docherty KF, Claggett BL, Jhund PS, de Boer RA, Hernandez AF, Inzucchi SE, Kosiborod MN, Lam CSP, Martinez F, Shah SJ, Desai AS, McMurray JJV, Solomon SD. SGLT-2 inhibitors in patients with heart failure: a comprehensive meta-analysis of five randomised controlled trials. *Lancet* 2022; **400**: 757-767 [PMID: 36041474 DOI: 10.1016/S0140-6736(22)01429-5]
- 10 McGuire DK, Shih WJ, Cosentino F, Charbonnel B, Cherney DZI, Dagogo-Jack S, Pratley R, Greenberg M, Wang S, Huyck S, Gantz I, Terra SG, Masiukiewicz U, Cannon CP. Association of SGLT2 Inhibitors With Cardiovascular and Kidney Outcomes in Patients With Type 2 Diabetes: A Meta-analysis. *JAMA Cardiol* 2021; **6**: 148-158 [PMID: 33031522 DOI: 10.1001/jamacardio.2020.4511]
- 11 Mavrakanas TA, Tsoukas MA, Brophy JM, Sharma A, Gariani K. SGLT-2 inhibitors improve cardiovascular and renal outcomes in patients with CKD: a systematic review and meta-analysis. *Sci Rep* 2023; **13**: 15922 [PMID: 37741858 DOI: 10.1038/s41598-023-42989-z]
- 12 Perkovic V, Jardine MJ, Neal B, Bompont S, Heerspink HJL, Charytan DM, Edwards R, Agarwal R, Bakris G, Bull S, Cannon CP, Capuano G, Chu PL, de Zeeuw D, Greene T, Levin A, Pollock C, Wheeler DC, Yavin Y, Zhang H, Zinman B, Meininger G, Brenner BM, Mahaffey KW; CREDESCENCE Trial Investigators. Canagliflozin and Renal Outcomes in Type 2 Diabetes and Nephropathy. *N Engl J Med* 2019; **380**: 2295-2306 [PMID: 30990260 DOI: 10.1056/NEJMoa1811744]

- 13 **Heerspink HJL**, Karasik A, Thuresson M, Melzer-Cohen C, Chodick G, Khunti K, Wilding JPH, Garcia Rodriguez LA, Cea-Soriano L, Kohsaka S, Nicolucci A, Lucisano G, Lin FJ, Wang CY, Wittbrodt E, Fenici P, Kosiborod M. Kidney outcomes associated with use of SGLT2 inhibitors in real-world clinical practice (CVD-REAL 3): a multinational observational cohort study. *Lancet Diabetes Endocrinol* 2020; **8**: 27-35 [PMID: [31862149](#) DOI: [10.1016/S2213-8587\(19\)30384-5](#)]
- 14 **Heerspink HJL**, Stefánsson BV, Correa-Rotter R, Chertow GM, Greene T, Hou FF, Mann JFE, McMurray JJV, Lindberg M, Rossing P, Sjöström CD, Toto RD, Langkilde AM, Wheeler DC; DAPA-CKD Trial Committees and Investigators. Dapagliflozin in Patients with Chronic Kidney Disease. *N Engl J Med* 2020; **383**: 1436-1446 [PMID: [32970396](#) DOI: [10.1056/NEJMoa2024816](#)]
- 15 **Pinto LC**, Rados DV, Remonti LR, Viana MV, Leitão CB, Gross JL. Dose-ranging effects of SGLT2 inhibitors in patients with type 2 diabetes: a systematic review and meta-analysis. *Arch Endocrinol Metab* 2022; **66**: 68-76 [PMID: [35263050](#) DOI: [10.20945/2359-3997000000440](#)]
- 16 **Bailey CJ**, Gross JL, Pieters A, Bastien A, List JF. Effect of dapagliflozin in patients with type 2 diabetes who have inadequate glycaemic control with metformin: a randomised, double-blind, placebo-controlled trial. *Lancet* 2010; **375**: 2223-2233 [PMID: [20609968](#) DOI: [10.1016/S0140-6736\(10\)60407-2](#)]
- 17 **Hong JH**, Moon JS, Seong K, Lim S. Comparison of therapeutic efficacy and safety of sitagliptin, dapagliflozin, or lologlitazone adjunct therapy in patients with type 2 diabetes mellitus inadequately controlled on sulfonylurea and metformin: Third agent study. *Diabetes Res Clin Pract* 2023; **203**: 110872 [PMID: [37574137](#) DOI: [10.1016/j.diabres.2023.110872](#)]
- 18 **Wilding JP**, Woo V, Rohwedder K, Sugg J, Parikh S; Dapagliflozin 006 Study Group. Dapagliflozin in patients with type 2 diabetes receiving high doses of insulin: efficacy and safety over 2 years. *Diabetes Obes Metab* 2014; **16**: 124-136 [PMID: [23911013](#) DOI: [10.1111/dom.12187](#)]
- 19 **Goring S**, Hawkins N, Wygant G, Roudaut M, Townsend R, Wood I, Barnett AH. Dapagliflozin compared with other oral anti-diabetes treatments when added to metformin monotherapy: a systematic review and network meta-analysis. *Diabetes Obes Metab* 2014; **16**: 433-442 [PMID: [24237939](#) DOI: [10.1111/dom.12239](#)]
- 20 **Wilding JPH**, Rigney U, Blak BT, Nolan ST, Fenici P, Medina J. Glycaemic, weight, and blood pressure changes associated with early versus later treatment intensification with dapagliflozin in United Kingdom primary care patients with type 2 diabetes mellitus. *Diabetes Res Clin Pract* 2019; **155**: 107791 [PMID: [31325543](#) DOI: [10.1016/j.diabres.2019.107791](#)]
- 21 **Olagunju A**, Yamani N, Kenny D, Mookadam M, Mookadam F, Unzek S. Potential for sodium-glucose cotransporter-2 inhibitors in the management of metabolic syndrome: A systematic review and meta-analysis. *World J Cardiol* 2022; **14**: 599-616 [PMID: [36483765](#) DOI: [10.4330/wjc.v14.i11.599](#)]
- 22 **Zheng XD**, Qu Q, Jiang XY, Wang ZY, Tang C, Sun JY. Effects of Dapagliflozin on Cardiovascular Events, Death, and Safety Outcomes in Patients with Heart Failure: A Meta-Analysis. *Am J Cardiovasc Drugs* 2021; **21**: 321-330 [PMID: [33001355](#) DOI: [10.1007/s40256-020-00441-x](#)]
- 23 **Tsapas A**, Karagiannis T, Kakotrichi P, Avgerinos I, Mantsiou C, Tousinas G, Manolopoulos A, Liakos A, Malandris K, Matthews DR, Bekiari E. Comparative efficacy of glucose-lowering medications on body weight and blood pressure in patients with type 2 diabetes: A systematic review and network meta-analysis. *Diabetes Obes Metab* 2021; **23**: 2116-2124 [PMID: [34047443](#) DOI: [10.1111/dom.14451](#)]
- 24 **Shi FH**, Li H, Shen L, Fu JJ, Ma J, Gu ZC, Lin HW. High-dose sodium-glucose co-transporter-2 inhibitors are superior in type 2 diabetes: A meta-analysis of randomized clinical trials. *Diabetes Obes Metab* 2021; **23**: 2125-2136 [PMID: [34048142](#) DOI: [10.1111/dom.14452](#)]
- 25 **Jongs N**, Greene T, Chertow GM, McMurray JJV, Langkilde AM, Correa-Rotter R, Rossing P, Sjöström CD, Stefánsson BV, Toto RD, Wheeler DC, Heerspink HJL; DAPA-CKD Trial Committees and Investigators. Effect of dapagliflozin on urinary albumin excretion in patients with chronic kidney disease with and without type 2 diabetes: a prespecified analysis from the DAPA-CKD trial. *Lancet Diabetes Endocrinol* 2021; **9**: 755-766 [PMID: [34619106](#) DOI: [10.1016/S2213-8587\(21\)00243-6](#)]
- 26 **Li CX**, Liu LY, Zhang CX, Geng XH, Gu SM, Wang YQ, Liu H, Xie Q, Liang S. Comparative safety of different sodium-glucose transporter 2 inhibitors in patients with type 2 diabetes: a systematic review and network meta-analysis of randomized controlled trials. *Front Endocrinol (Lausanne)* 2023; **14**: 1238399 [PMID: [37701900](#) DOI: [10.3389/fendo.2023.1238399](#)]
- 27 **Perry RJ**, Shulman GI. Sodium-glucose cotransporter-2 inhibitors: Understanding the mechanisms for therapeutic promise and persisting risks. *J Biol Chem* 2020; **295**: 14379-14390 [PMID: [32796035](#) DOI: [10.1074/jbc.REV120.008387](#)]
- 28 **di Mauro G**, Mascolo A, Gaio M, Rafaniello C, De Angelis A, Berrino L, Paolisso G, Rossi F, Capuano A. The Reporting Frequency of Ketoacidosis Events with Dapagliflozin from the European Spontaneous Reporting System: The DAPA-KETO Study. *Pharmaceuticals (Basel)* 2022; **15** [PMID: [35337085](#) DOI: [10.3390/ph15030286](#)]
- 29 **Chen MB**, Wang H, Zheng QH, Xu HL, Cui WY. Effect of sodium-dependent glucose transporter inhibitors on glycated hemoglobin A1c after 24 weeks in patients with diabetes mellitus: A systematic review and meta-analysis. *Medicine (Baltimore)* 2021; **100**: e24101 [PMID: [33429775](#) DOI: [10.1097/MD.00000000000024101](#)]
- 30 **Lautsch D**, Alsumali A, McLeod E, Kuang Y, He J, Singh R, Nevo A, Arnet U, Uyei J, Rajpathak S. Comparative Efficacy of Dual and Single Initiation of Add-On Oral Antihyperglycemic Agents in Type 2 Diabetes Uncontrolled on Metformin Alone: A Systematic Literature Review and Network Meta-Analysis. *Diabetes Ther* 2021; **12**: 389-418 [PMID: [33313996](#) DOI: [10.1007/s13300-020-00975-y](#)]
- 31 **Cheong AJY**, Teo YN, Teo YH, Syn NL, Ong HT, Ting AZH, Chia AZQ, Chong EY, Chan MY, Lee CH, Lim AYL, Kong WKF, Wong RCC, Chai P, Sia CH. SGLT inhibitors on weight and body mass: A meta-analysis of 116 randomized-controlled trials. *Obesity (Silver Spring)* 2022; **30**: 117-128 [PMID: [34932882](#) DOI: [10.1002/oby.23331](#)]
- 32 **Clemmer JS**, Yen TE, Obi Y. Modeling the renoprotective mechanisms of SGLT2 inhibition in hypertensive chronic kidney disease. *Physiol Rep* 2023; **11**: e15836 [PMID: [37957121](#) DOI: [10.14814/phy2.15836](#)]
- 33 **Yang S**, Liu Y, Zhang S, Wu F, Liu D, Wu Q, Zheng H, Fan P, Su N. Risk of diabetic ketoacidosis of SGLT2 inhibitors in patients with type 2 diabetes: a systematic review and network meta-analysis of randomized controlled trials. *Front Pharmacol* 2023; **14**: 1145587 [PMID: [37397500](#) DOI: [10.3389/fphar.2023.1145587](#)]
- 34 **Lingvay I**, Capehorn MS, Catarig AM, Johansen P, Lawson J, Sandberg A, Shaw R, Paine A. Efficacy of Once-Weekly Semaglutide vs Empagliflozin Added to Metformin in Type 2 Diabetes: Patient-Level Meta-analysis. *J Clin Endocrinol Metab* 2020; **105**: e4593-e4604 [PMID: [32827435](#) DOI: [10.1210/clinem/dgaa577](#)]
- 35 **Sánchez-García A**, Simental-Mendía M, Millán-Alanís JM, Simental-Mendía LE. Effect of sodium-glucose co-transporter 2 inhibitors on lipid profile: A systematic review and meta-analysis of 48 randomized controlled trials. *Pharmacol Res* 2020; **160**: 105068 [PMID: [32652200](#) DOI: [10.1016/j.phrs.2020.105068](#)]



Published by **Baishideng Publishing Group Inc**  
7041 Koll Center Parkway, Suite 160, Pleasanton, CA 94566, USA

**Telephone:** +1-925-3991568

**E-mail:** [office@baishideng.com](mailto:office@baishideng.com)

**Help Desk:** <https://www.f6publishing.com/helpdesk>

<https://www.wjgnet.com>

