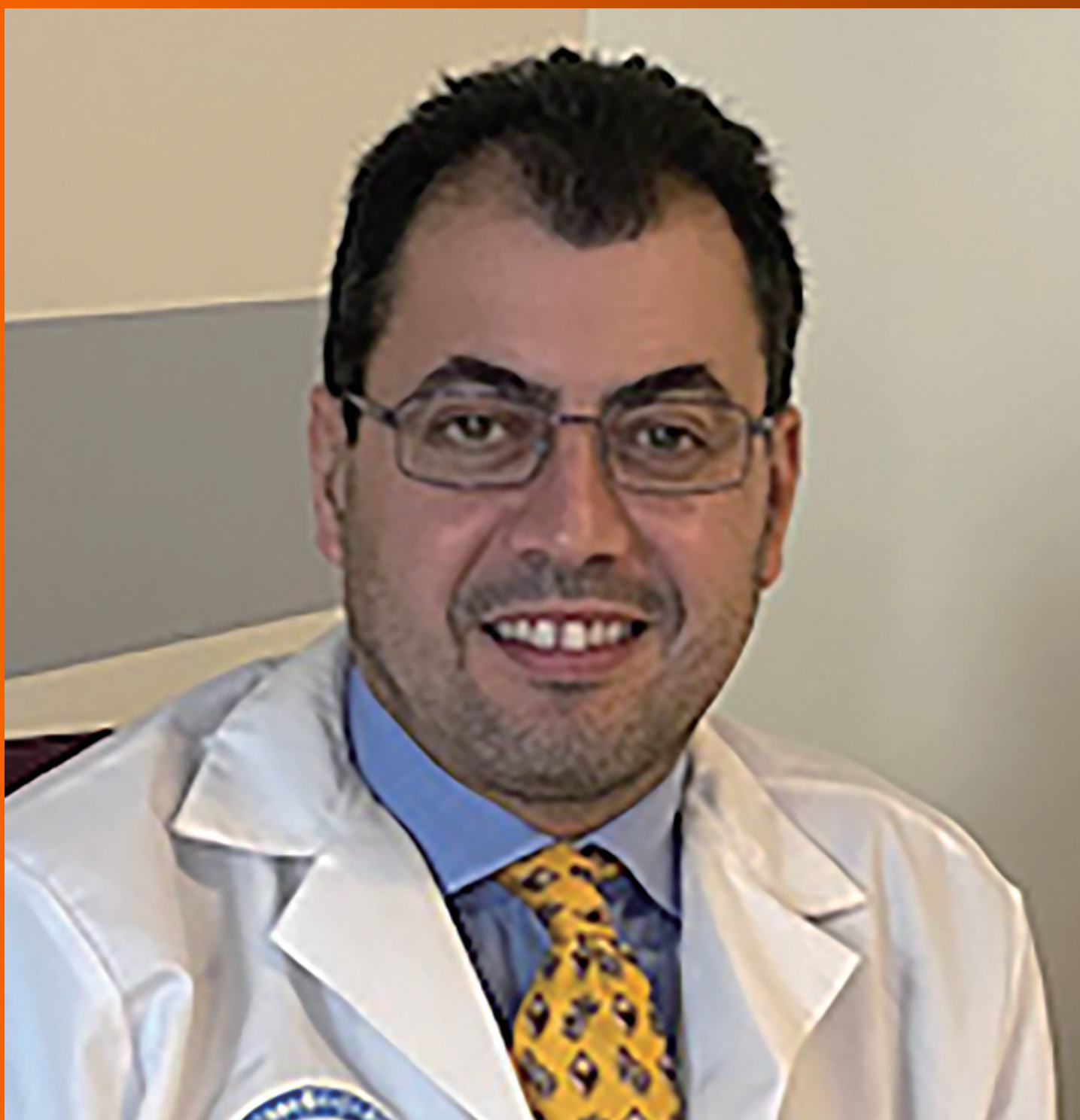


World Journal of *Gastrointestinal Surgery*

World J Gastrointest Surg 2021 December 27; 13(12): 1523-1769



Contents

Monthly Volume 13 Number 12 December 27, 2021

FRONTIER

- 1523** Photodynamic therapy: A next alternative treatment strategy for hepatocellular carcinoma?
Zhu F, Wang BR, Zhu ZF, Wang SQ, Chai CX, Shang D, Li M

REVIEW

- 1536** Role of mesenteric component in Crohn's disease: A friend or foe?
Yin Y, Zhu ZX, Li Z, Chen YS, Zhu WM
- 1550** Neoadjuvant treatment strategies for hepatocellular carcinoma
Xu L, Chen L, Zhang W
- 1567** Mucinous adenocarcinoma: A unique clinicopathological subtype in colorectal cancer
Huang A, Yang Y, Shi JY, Li YK, Xu JX, Cheng Y, Gu J

MINIREVIEWS

- 1584** Endoscopic therapy of weight regain after bariatric surgery
Bulajic M, Vadalà di Prampero SF, Boškoski I, Costamagna G
- 1597** Patient-centered developments in colon- and rectal cancer with a multidisciplinary international team: From translational research to national guidelines
Link KH, Kornmann M, Staib L, Kreuser ED, Gaus W, Röttinger E, Suhr P, Maulbecker-Armstrong C, Danenberg P, Danenberg K, Schatz M, Sander S, Ji ZL, Li JT, Peng SY, Bittner R, Beger HG, Traub B
- 1615** Advances in liver transplantation for unresectable colon cancer liver metastasis
Cui X, Geng XP, Zhou DC, Yang MH, Hou H

ORIGINAL ARTICLE

Retrospective Study

- 1628** Pediatric T-tube in adult liver transplantation: Technical refinements of insertion and removal
Spoletini G, Bianco G, Franco A, Frongillo F, Nure E, Giovinozzo F, Galiandro F, Tringali A, Perri V, Costamagna G, Avolio AW, Agnes S
- 1638** Preoperative calculation of angles of vision and working area in laparoscopic surgery to treat a giant hiatal hernia
Lara FJP, Zubizarreta Jimenez R, Moya Donoso FJ, Hernández Gonzalez JM, Prieto-Puga Arjona T, del Rey Moreno A, Pitarch Martinez M
- 1651** Effect of aluminum phosphate gel on prevention of early rebleeding after ligation of esophageal variceal hemorrhage
Zhang ZL, Peng MS, Chen ZM, Long T, Wang LS, Xu ZL

- 1660** Postoperative complications after robotic resection of colorectal cancer: An analysis based on 5-year experience at a large-scale center

Huang ZX, Zhou Z, Shi HR, Li TY, Ye SP

- 1673** 'Short' pancreaticojejunostomy might be a valid option for treatment of chronic pancreatitis in many cases

Murruste M, Kirsimägi Ü, Kase K, Veršinina T, Talving P, Lepner U

- 1685** Risk factors for perioperative complications in laparoscopic surgeries of retrorectal cystic lesions

Wang PP, Lin C, Zhou JL, Xu KW, Qiu HZ, Wu B

- 1696** Liver resection *vs* radiofrequency ablation in single hepatocellular carcinoma of posterosuperior segments in elderly patients

Delvecchio A, Inchingolo R, Laforgia R, Ratti F, Gelli M, Anelli MF, Laurent A, Vitali G, Magistri P, Assirati G, Felli E, Wakabayashi T, Pessaux P, Piardi T, di Benedetto F, de'Angelis N, Briceño J, Rampoldi A, Adam R, Cherqui D, Aldrighetti LA, Memeo R

Observational Study

- 1708** Expression of adipokine ghrelin and ghrelin receptor in human colorectal adenoma and correlation with the grade of dysplasia

Stojasavljevic-Shapeski S, Virovic-Jukic L, Tomas D, Duvnjak M, Tomasic V, Hrabar D, Kralj D, Budimir I, Barsic N, Ljubcic N

SYSTEMATIC REVIEWS

- 1721** Right sided diverticulitis in western countries: A review

Epifani AG, Cassini D, Ciocchi R, Accardo C, Di Candido F, Ardu M, Baldazzi G

- 1736** Platelet rich plasma effectiveness in bowel anastomoses: A systematic review

Geropoulos G, Psarras K, Giannis D, Martzivanou EC, Papaioannou M, Kakos CD, Pavlidis ET, Symeonidis N, Koliakos G, Pavlidis TE

- 1754** Current and future role of three-dimensional modelling technology in rectal cancer surgery: A systematic review

Przedlacka A, Pellino G, Fletcher J, Bello F, Tekkis PP, Kontovounisios C

ABOUT COVER

Editorial Board Member of *World Journal of Gastrointestinal Surgery*, Marcello Donati, FACS, MD, PhD, Professor, Department of Surgery and Medical-Surgical specialties, University of Catania, Catania 95125, Italy. mdonati@unict.it

AIMS AND SCOPE

The primary aim of *World Journal of Gastrointestinal Surgery* (WJGS, *World J Gastrointest Surg*) is to provide scholars and readers from various fields of gastrointestinal surgery with a platform to publish high-quality basic and clinical research articles and communicate their research findings online.

WJGS mainly publishes articles reporting research results and findings obtained in the field of gastrointestinal surgery and covering a wide range of topics including biliary tract surgical procedures, biliopancreatic diversion, colectomy, esophagectomy, esophagostomy, pancreas transplantation, and pancreatectomy, etc.

INDEXING/ABSTRACTING

The WJGS is now abstracted and indexed in Science Citation Index Expanded (SCIE, also known as SciSearch®), Current Contents/Clinical Medicine, Journal Citation Reports/Science Edition, PubMed, and PubMed Central. The 2021 edition of Journal Citation Reports® cites the 2020 impact factor (IF) for WJGS as 2.582; IF without journal self cites: 2.564; 5-year IF: 3.378; Journal Citation Indicator: 0.53; Ranking: 97 among 212 journals in surgery; Quartile category: Q2; Ranking: 73 among 92 journals in gastroenterology and hepatology; and Quartile category: Q4.

RESPONSIBLE EDITORS FOR THIS ISSUE

Production Editor: Rui-Rui Wu, Production Department Director: Xiang Li, Editorial Office Director: Ya-Juan Ma.

NAME OF JOURNAL

World Journal of Gastrointestinal Surgery

ISSN

ISSN 1948-9366 (online)

LAUNCH DATE

November 30, 2009

FREQUENCY

Monthly

EDITORS-IN-CHIEF

Shu-You Peng, Varut Lohsiriwat

EDITORIAL BOARD MEMBERS

<https://www.wjgnet.com/1948-9366/editorialboard.htm>

PUBLICATION DATE

December 27, 2021

COPYRIGHT

© 2021 Baishideng Publishing Group Inc

INSTRUCTIONS TO AUTHORS

<https://www.wjgnet.com/bpg/gerinfo/204>

GUIDELINES FOR ETHICS DOCUMENTS

<https://www.wjgnet.com/bpg/gerinfo/287>

GUIDELINES FOR NON-NATIVE SPEAKERS OF ENGLISH

<https://www.wjgnet.com/bpg/gerinfo/240>

PUBLICATION ETHICS

<https://www.wjgnet.com/bpg/gerinfo/288>

PUBLICATION MISCONDUCT

<https://www.wjgnet.com/bpg/gerinfo/208>

ARTICLE PROCESSING CHARGE

<https://www.wjgnet.com/bpg/gerinfo/242>

STEPS FOR SUBMITTING MANUSCRIPTS

<https://www.wjgnet.com/bpg/gerinfo/239>

ONLINE SUBMISSION

<https://www.f6publishing.com>

Retrospective Study

Liver resection vs radiofrequency ablation in single hepatocellular carcinoma of posterosuperior segments in elderly patients

Antonella Delvecchio, Riccardo Inchingolo, Rita Laforgia, Francesca Ratti, Maximiliano Gelli, Massimiliano Ferdinando Anelli, Alexis Laurent, Giulio Vitali, Paolo Magistri, Giacomo Assirati, Emanuele Felli, Taiga Wakabayashi, Patrick Pessaux, Tullio Piardi, Fabrizio di Benedetto, Nicola de'Angelis, Javier Briceño, Antonio Rampoldi, Renè Adam, Daniel Cherqui, Luca Antonio Aldrighetti, Riccardo Memeo

ORCID number:

Antonella Delvecchio 0000-0002-7759-4340; Riccardo Inchingolo 0000-0002-0253-5936; Rita Laforgia 0000-00003-3580-4976; Francesca Ratti 0000-0002-4710-6940; Maximiliano Gelli 0000-0001-9807-4021; Massimiliano Ferdinando Anelli 0000-0002-0916-1949; Alexis Laurent 0000-0003-1372-0843; Giulio Vitali 0000-0001-8956-0247; Paolo Magistri 0000-0001-8326-069X; Giacomo Assirati 0000-0001-8240-1497; Emanuele Felli 0000-0002-6510-1457; Taiga Wakabayashi 0000-0002-5074-0205; Patrick Pessaux 0000-0001-5635-7437; Tullio Piardi 0000-0001-6704-3206; Fabrizio di Benedetto 0000-0002-6718-8760; Nicola de'Angelis 0000-0002-1211-4916; Javier Briceño 0000-0001-7027-7898; Antonio Rampoldi 0000-0003-2494-5925; Renè Adam 0000-0003-2169-5449; Daniel Cherqui 0000-0001-5270-2731; Luca Antonio Aldrighetti 0000-0001-7729-2468; Riccardo Memeo 0000-0002-1668-932X.

Author contributions: All authors equally contributed to this paper with conception and design of the study, literature review and analysis, drafting and critical revision and editing, and final approval of the final version.

Institutional review board

Antonella Delvecchio, Unit of General Surgery, "A. Perrino" Hospital, Ceglie Messapica 70124, Bari, Italy

Riccardo Inchingolo, Interventional Radiology Unit, "F. Miulli" General Regional Hospital, Acquaviva delle Fonti 75100, Italy

Rita Laforgia, Unit of Laparoscopic Surgery, University of Bari, Bari 70124, Italy

Francesca Ratti, Unit of Hepato-Pancreatic-Biliary Surgery, University Vita Salute San Raffaele, Milan 20132, Italy

Maximiliano Gelli, Department of Surgical Oncology, Gustave Roussy Cancer Campus Grand Paris, Villejuif 94800, France

Massimiliano Ferdinando Anelli, Javier Briceño, Department of General Surgery, Reina Sofia University Hospital, Cordoba 14004, Spain

Alexis Laurent, Department of Digestive and Hepatobiliary Surgery, Henry Mondor University Hospital, Creteil 94000, France

Giulio Vitali, Division of Transplantation, Geneva University Hospital, Geneva 44041, Switzerland

Paolo Magistri, Giacomo Assirati, Fabrizio di Benedetto, Hepato-Pancreato-Biliary Surgery and Liver Transplantation Unit, University of Modena and Reggio Emilia, Modena 42121, Italy

Emanuele Felli, Taiga Wakabayashi, Patrick Pessaux, Department of Digestive Surgery, Strasbourg University Hospital, Strasbourg 67000, France

Tullio Piardi, Department of Digestive and Hepatobiliary Surgery, Robert Debré University Hospital, Reims 51100, France

Nicola de'Angelis, Unit of Minimally Invasive and Robotic Digestive Surgery, "F. Miulli" General Regional Hospital, Acquaviva delle Fonti 70124, Italy

Antonio Rampoldi, Interventional Radiology Unit, Niguarda Hospital, Milan 20162, Italy

Renè Adam, Daniel Cherqui, Department of Hepatobiliary Surgery, Paul Brousse University

statement: This study was reviewed and approved by the Ethics Committee of "F. Miulli" General Regional Hospital.

Informed consent statement:

Patients were not required to give informed consent to the study because the analysis used anonymous clinical data that were obtained after each patient agreed to treatment by written consent.

Conflict-of-interest statement: All the authors are aware of the content of the manuscript and have no conflict of interest.

Data sharing statement: No additional data are available.

Country/Territory of origin: Italy

Specialty type: Surgery

Provenance and peer review:

Invited article; Externally peer reviewed.

Peer-review report's scientific quality classification

Grade A (Excellent): 0
Grade B (Very good): B
Grade C (Good): 0
Grade D (Fair): 0
Grade E (Poor): 0

Open-Access: This article is an open-access article that was selected by an in-house editor and fully peer-reviewed by external reviewers. It is distributed in accordance with the Creative Commons Attribution NonCommercial (CC BY-NC 4.0) license, which permits others to distribute, remix, adapt, build upon this work non-commercially, and license their derivative works on different terms, provided the original work is properly cited and the use is non-commercial. See: <http://creativecommons.org/licenses/by-nc/4.0/>

Received: July 22, 2021

Peer-review started: July 22, 2021

First decision: August 19, 2021

Revised: August 30, 2021

Accepted: November 1, 2021

Article in press: November 1, 2021

Published online: December 27,

Hospital, Villejuif 94800, France

Luca Antonio Aldrighetti, Department of Hepatobiliary Surgery, University Vita Salute San Raffaele, Milan 20132, Italy

Riccardo Memeo, Unit of Hepato-Pancreatic-Biliary Surgery, "F. Miulli" General Regional Hospital, Acquaviva delle Fonti 70124, Italy

Corresponding author: Riccardo Inchingolo, MD, Chief Doctor, Director, Doctor, Interventional Radiology Unit, "F. Miulli" General Regional Hospital, Strada Per Santeramo, Acquaviva delle Fonti 75100, Italy. riccardoin@hotmail.it

Abstract

BACKGROUND

Liver resection and radiofrequency ablation are considered curative options for hepatocellular carcinoma. The choice between these techniques is still controversial especially in cases of hepatocellular carcinoma affecting posterosuperior segments in elderly patients.

AIM

To compare post-operative outcomes between liver resection and radiofrequency ablation in elderly with single hepatocellular carcinoma located in posterosuperior segments.

METHODS

A retrospective multicentric study was performed enrolling 77 patients age ≥ 70 -years-old with single hepatocellular carcinoma (≤ 30 mm), located in posterosuperior segments (4a, 7, 8). Patients were divided into liver resection and radiofrequency ablation groups and preoperative, peri-operative and long-term outcomes were retrospectively analyzed and compared using a 1:1 propensity score matching.

RESULTS

After propensity score matching, twenty-six patients were included in each group. Operative time and overall postoperative complications were higher in the resection group compared to the ablation group (165 min *vs* 20 min, $P < 0.01$; 54% *vs* 19% $P = 0.02$ respectively). A median hospital stay was significantly longer in the resection group than in the ablation group (7.5 d *vs* 3 d, $P < 0.01$). Ninety-day mortality was comparable between the two groups. There were no significant differences between resection and ablation group in terms of overall survival and disease free survival at 1, 3, and 5 years.

CONCLUSION

Radiofrequency ablation in posterosuperior segments in elderly is safe and feasible and ensures a short hospital stay, better quality of life and does not modify the overall and disease-free survival.

Key Words: Elderly; Hepatocellular carcinoma; Posterosuperior segments; Liver resection; Radiofrequency ablation; Multicentric study

©The Author(s) 2021. Published by Baishideng Publishing Group Inc. All rights reserved.

Core Tip: A retrospective multicentric study was performed enrolling 77 patients with ≥ 70 years of age and a single hepatocellular carcinoma (≤ 30 mm), located in the posterosuperior segments (4a, 7, 8). Patients were divided into two groups: liver resection and radiofrequency ablation. Peri-operative and long-term outcomes were analyzed and compared using a 1:1 propensity score matching. The study results show that radiofrequency ablation in posterosuperior segments in elderly patients is safe and feasible and ensures a short hospital stay, reduces overall postoperative complications, increases the quality of life and does not modify the overall and disease-free survival.

2021

P-Reviewer: Kim JH**S-Editor:** Wang LL**L-Editor:** Filipodia**P-Editor:** Wang LL

Citation: Delvecchio A, Inchingolo R, Laforgia R, Ratti F, Gelli M, Anelli MF, Laurent A, Vitali G, Magistri P, Assirati G, Felli E, Wakabayashi T, Pessaux P, Piardi T, di Benedetto F, de'Angelis N, Briceño J, Rampoldi A, Adam R, Cherqui D, Aldrighetti LA, Memeo R. Liver resection vs radiofrequency ablation in single hepatocellular carcinoma of posterosuperior segments in elderly patients. *World J Gastrointest Surg* 2021; 13(12): 1696-1707

URL: <https://www.wjgnet.com/1948-9366/full/v13/i12/1696.htm>

DOI: <https://dx.doi.org/10.4240/wjgs.v13.i12.1696>

INTRODUCTION

Hepatocellular carcinoma (HCC) is the third leading cause of cancer-related death worldwide and the fifth most common cancer[1]. According to Barcelona Clinic Liver Cancer (BCLC) staging system, ablation, resection and liver transplantation (LT) are considered the best treatment for patients affected by HCC very early and early stage [2]. Considering the increasing number of elderly patients in our population, LT could not be considered as a valid therapeutic option in these patients, due to the limit of age that is contraindicated in many liver transplantation centers[3]. Nevertheless, for elderly patients, liver resection (LR) and radiofrequency ablation (RFA) remains a valid alternative. LR guarantees a complete removal of the tumor with a wide margin either in anatomical and non-anatomical resection. Even if in recent periods the use of minimally invasive approaches, laparoscopic and robotic, has been increasing, they still remain invasive procedures performed under general anesthesia[4]. On the contrary, RFA has very low invasiveness and morbidity but literature is still unclear in terms of disease free and overall survival compared to liver resection[5,6].

The choice between LR and RFA is still controversial, especially in cases of HCC affecting posterosuperior segments (PSS).

PSS are more difficult to access than the anterolateral ones for the anatomical position and are technically complex for the bleeding control and poor liver field visualization. Open liver resection (OLR) is widely considered as preferred procedure for HCC located in PSS[7], instead, laparoscopic liver resection (LLR) in PSS is challenging and needs to be approached by experienced surgeons in major centers. LLR presents important benefits with less invasiveness, less postoperative pain, early discharge and similar mortality and morbidity compared to OLR according to 2017 Southampton Consensus Guidelines[8].

In the literature there are few studies with focus on surgical treatments in elderly patients with HCC especially in PSS[9]. The aim of our study is to compare short and long-term outcomes between LR and RFA in elderly patients with single HCC located in PSS.

MATERIALS AND METHODS

Patient data

A multicentric retrospective study was performed enrolling 77 patients with ≥ 70 years of age, from January 2009 to January 2019 in the following European hospital centers: IRCCS San Raffaele Hospital, Milan, Italy; Paul Brousse University Hospital, Villejuif, France; University Hospital Reina Sofía, Córdoba, Spain; Henri Mondor University Hospital, Créteil, France; University Hospital Policlinico of Modena, Modena, Italy; Miulli Hospital, Bari, Italy; Hospital Niguarda, Milan, Italy; Strasbourg University Hospital, IRCAD, Strasbourg, France; Robert Debré University Hospital, Reims, France; University Hospital Geneva, Switzerland.

Inclusion criteria were elderly patients (age ≥ 70) with single HCC ≤ 30 mm, located in PSS, treated with RFA or LR. Exclusion criteria are multiple HCC or single > 30 mm, patients younger than 70 years and American Society of Anesthesiologists (ASA) score $> IV$.

Patients were divided into two groups according to the treatment, LR or RFA. LR group included open liver resection and laparoscopic liver resection.

The choice of treatment was generally based on the tumor location, the history of previous upper abdominal surgery and each center experience.

Preoperative, peri-operative data and long term outcomes were retrospectively analyzed and compared in both groups before propensity score matching (b-PSM) and after propensity score matching (a-PSM).

Preoperative data

Patient demographic data and preoperative variables were collected: blood tests, *i.e.* serum α -fetoprotein (AFP), platelets, bilirubin and coagulation; American Society of Anesthesiologists (ASA) score; comorbidities; cause of cirrhosis; Child-Pugh and the model for end-stage liver disease (MELD) scores.

All patients were staged preoperatively following computer tomography of the chest-abdomen-pelvis and/or abdominal magnetic resonance.

Tumor involving segments 4a, 7, 8 or between them were defined as located in PSS. HCC location and size were recorded and the type of treatment was discussed in multidisciplinary teams including surgeons, hepatologists, oncologists, interventional radiologists and pathologists.

Diagnosis was based on non-invasive criteria according to European Association for the Study of the Liver (EASL) and biopsy was used in case of inconclusive diagnosis [10].

Perioperative data

The procedure was performed by expert surgeons and interventional radiologists with a minimum consolidated experience of 10 years.

An intraoperative Doppler Ultrasound was systematically achieved to confirm the procedure to be performed.

Percutaneous RFA was performed using a single internally cooled electrode under a continuous sonographic guidance with local anesthesia and intravenous sedation. Post-RFA ultrasound was performed to control that there were no immediate complications such as hemorrhage or hematoma. On the 1st post-op day, an ultrasound was performed to assess the quality of the ablation in terms of necrotic area.

The Couinaud classification was used to define liver segmentation and the Brisbane 2000 terminology was used to define liver resections[11,12]. During surgical resection, attempts were made to maintain an adequate parenchymal margin of at least 1 cm.

The Pringle maneuver was routinely prepared for surgical resection and used according to the experience of each center. Perioperative variables included operative time, rate of blood transfusion, complications and length of hospital stay which were recorded. Clavien-Dindo grading system was used to classify postoperative complications.

Ninety-day mortality was defined as any deaths occurring 90 d from surgery or RFA.

Long-term outcomes

Patients undergoing RFA were given a CT scan 1 mo after ablation, in order to evaluate the results of the treatment according to mRECIST (modified Response Evaluation Criteria in Solid Tumors) criteria[13].

A standardized follow-up was adopted, every 2 mo for the first 2 years and then every 4 mo. During such follow-up, the patients were subjected to blood testing including alpha-fetoprotein, liver function and imaging, such as abdominal ultrasonography, CT, or MRI. Recurrence treatment included repeat resection or RFA, trans-arterial chemo-embolization, chemotherapy or supportive care according to the EASL clinical practice guidelines[10].

All HCC-related deaths and recurrences were estimated and used to calculate the overall survival (OS) and disease-free survival (DFS) in both groups.

Statistical analysis

A propensity score-based analysis was performed to minimize selection bias and limit confusion in the retrospective study. The propensity score was estimated using a 1:1 Logistical regression regarding the following variables: ASA score, MELD score and the tumors size.

Continuous variables, expressed as median with range, were compared using Mann-Whitney U test. Instead, categorical variables, expressed as numbers with percentages, were compared using chi-square test.

Overall survival and disease-free survival were estimated using the Kaplan-Meier method and compared using a log-rank test. A *P* value of < 0.05 was considered to indicate statistical significance. Statistical analyses were performed using SPSS software version 20.

RESULTS

Preoperative outcome b-psm and a-psm

The preoperative characteristics, before and after propensity score matching of RFA and LR groups are presented in [Table 1](#).

During the study period, 77 patients were enrolled and divided into two groups according to the procedure performed: 40 patients in the RFA group and 37 patients in the LR group. After a 1:1 PSM, 52 patients were enrolled: 26 patients for each group.

The rate of F4 cirrhosis was lower in LR group than in the RFA group both before (51% *vs* 82%, $P = 0.01$) and after PSM (46% *vs* 85%, $P = 0.01$). ASA scores and MELD scores were lower in liver resection group b-PSM than in the RFA group ($P = 0.05$, $P = 0.01$, respectively) and equal between the two groups a-PSM ($P = 0.35$, $P = 0.23$, respectively). Tumor size was higher in the LR group than in the RFA group b-PSM (median, 29 mm *vs* 23 mm, $P = 0.02$) and comparable between two groups a-PSM (median, 23 mm *vs* 20.5 mm, $P = 0.08$).

Perioperative outcomes b-psm and a-psm

The perioperative characteristics, before and after propensity score matching of the RFA and LR groups are presented in [Table 2](#).

Operative time was higher in the LR group than in the RFA group b-PSM (260 min *vs* 23.5 min, $P < 0.01$) and this was confirmed also after restricting the analysis to propensity score matching (165 min *vs* 20 min, $P < 0.01$). Intraoperative blood transfusion was comparable between the LR group and the RFA group both before (19% *vs* 7%, $P = 0.20$) and after PSM (19% *vs* 12%, $P = 0.70$). There were no differences in overall postoperative complications between the LR group and the RFA group b-PSM (43% *vs* 22%, $P = 0.09$), conversely, for a-PSM were significantly higher in the LR group than in the RFA group (54% *vs* 19%, $P = 0.02$). A median hospital stay was significantly longer in the LR group than in the RFA group both before and after PSM (6 d *vs* 2 d, $P < 0.01$; 7.5 d *vs* 3 d, $P < 0.01$, respectively). There was no difference in the 90-d mortality between the LR and the RFA groups both before (5% *vs* 5%, $P = 1.0$) and after PSM (8% *vs* 8%, $P = 1.0$).

Long-term outcomes b-psm and a-psm

OS and DFS were calculated before and after the propensity score matching according to the procedure performed and are presented in [Figure 1](#).

There were no statistically significant differences between each group in terms of OS (b-PSM $P = 0.50$; a-PSM $P = 0.91$) and DFS (b-PSM $P = 0.17$; a-PSM $P = 0.70$).

The estimated 1-, 3-, and 5-year OS rates b-PSM were 9%, 72%, and 59% for the RFA group and 88, 74, and 74% for the LR group respectively.

The estimated 1-, 3- and 5-year OS rates a-PSM were 92%, 73%, and 63% for the RFA group and 84, 71, and 71% in the LR group respectively.

DFS b-PSM at 1-, 3- and 5-years was 66%, 48%, and 38% in the RFA group as compared to 84, 59, and 35% in the LR group respectively.

DFS a-PSM at 1-, 3- and 5-years was 72%, 54%, and 54% in the RFA group as compared to 87, 59 and 34% in the LR group respectively.

DISCUSSION

To our knowledge, our retrospective multicentric study is one of the few series reported in literature comparing short and long-term outcomes between RFA and LR in elderly patients and it is the first considering the HCC located in PSS.

The number of elderly patients is constantly growing thanks to improved medical care and an increase in life expectancy; therefore, the cut-off age to define the elderly has moved from > 65 years to 70 years[14].

Elderly patients should be treated with RFA or LR for a curative intent because they are unsuitable for LT due to advanced age [3]. Elderly are considered fragile as a result of the accumulation of chronic diseases, the gradual loss of reserve capacity and the increase in the tumor's rate including HCC[15].

HCC located in PSS still represent a surgical challenge and the best therapeutic option is still controversial. PSS segments are difficult to access, located in the posterior part of the abdominal cavity where exposure is not ideal[16,17].

The resections of lesions located in PSS are technically complex and should be performed by experienced surgeons in open and laparoscopic surgery and in a high-volume centers, as recommended by Southampton Guidelines[18]. Experience is

Table 1 Preoperative characteristics before and after propensity score matching, according to the procedure

	Before PSM (n: 77)			After PSM (n: 52)		
	RFA (n: 40)	Surgery (n: 37)	P value	RFA (n: 26)	Surgery (n: 26)	P value
Male, n (%)	28 (70)	27 (73)	0.80	17 (65)	16 (62)	1.0
Age (yr) median (range)	74.5 (70-87)	74.98 (70-83)	0.80	75 (70-81)	74.26 (70-81)	0.43
BMI (kg/cm ²) median (range)	26.7 (19-51)	26.7 (22-36)	0.90	26.7 (19-51)	26.7 (22-36)	0.48
Comorbidity ≥ 2 , n (%)	23 (57)	14 (38)	0.10	12 (46)	10 (40)	0.78
Cause of cirrhosis, n (%)			0.30			0.71
Hepatitis C virus, n (%)	21 (53)	19 (50)		16 (61)	16 (61)	
Hepatitis B virus, n (%)	5 (12)	10 (27)		4 (15)	6 (23)	
Alcohol, n (%)	6 (15)	4 (12)		3 (12)	1 (4)	
Others, n (%)	8 (20)	4 (11)		3 (12)	3 (12)	
F4 cirrhosis, n (%)	33 (82)	19 (51)	0.01	22 (85)	12 (46)	0.01
ASA score, n (%)			0.05			0.35
I/II, n (%)	11 (28)	19 (51)		10 (40)	11 (42)	
III/IV, n (%)	29 (72)	18 (49)		16 (61)	15 (58)	
Preoperative blood tests median (range)						
Bilirubin ($\mu\text{mol/L}$) median (range)	1 (1-1.1)	1 (1-2)	0.55	1 (1-1.1)	1 (1-1)	0.90
Platelet count $\times 10^9/\text{L}$ median (range)	118 (52-380)	173 (55-387)	0.01	137 (69-380)	183 (55-340)	0.06
INR median (range)	1 (1-2)	1 (1-2)	0.40	1 (1-1.2)	1 (1-2)	0.06
AFP (mg/mL) median (range)	5 (1-1988)	12.5 (2-3900)	0.14	6.5 (1-1988)	7 (2-3900)	0.64
Child-Pugh, n (%)			0.20			0.06
A	37 (93)	30 (81)		26 (100)	21 (81)	
B	3 (7)	7 (19)		0 (0)	5 (19)	
MELD median (range)	8 (6-15)	6 (6-16)	0.01	8 (6-15)	7 (6-16)	0.23
Tumors size (mm) median (range)	23 (10-30)	29 (12-30)	0.02	20.5 (10-30)	23 (15-30)	0.08
Tumor locations, n (%)			0.10			0.45
4a	3 (7)	3 (8)		2 (8)	2 (8)	
7	8 (20)	17 (46)		4 (15)	9 (34)	
8	23 (58)	14 (38)		17 (65)	13 (50)	
7-8	6 (15)	3 (8)		3 (12)	2 (8)	
Histological proven, n (%)	7 (17)	8 (22)	0.80	6 (23)	8 (31)	0.75

AFP: α -fetoprotein; ASA: American Society of Anaesthesiology; BMI: Body mass index; INR: International normalized ratio; MELD: Model of end-stage liver disease; PSM: Propensity score matching; RFA: Radiofrequency ablation.

essential to ensure success without compromise to oncological outcomes and surgical safety. Laparoscopic approach was considered difficult for these kind of lesions and also the anatomical landmarks are not clear as in anterior segments of the liver[8,19]. In complex cases including major hepatectomy, biliary reconstruction and difficult segmentectomy of the PSS, robotic surgery improved intra-operative and short-term postoperative outcomes[20].

In recent years RFA has been increasingly used for the treatment of small HCC as first line curative treatment when patients are not candidates for LR or LT and also as bridging treatment for patients on the waiting list for liver transplantation[21].

Table 2 Perioperative characteristics before and after propensity score matching, according to the procedure

	Before PSM (n: 77)			After PSM (n: 52)		
	RFA (n: 40)	Surgery (n: 37)	P value	RFA (n: 26)	Surgery (n: 26)	P value
Operative time (min) median (range)	23.5 (5-55)	260 (120-600)	< 0.01	20 (5-26)	165 (120-383)	< 0.01
Blood transfusion, n (%)	3 (7)	7 (19)	0.20	3 (12)	5 (19)	0.70
Postoperative complications, n (%)	9 (22)	16 (43)	0.09	5 (19)	14 (54)	0.02
Dindo-Clavien classification, n (%)						
I-II	9 (22)	11 (30)	0.60	5 (19)	10 (40)	0.20
III-IV	0 (0)	5 (13)	0.02	0 (0)	2 (8)	0.50
Type of complications, n (%)						
Liver failure	0 (0)	2 (5)	0.22	0 (0)	2 (8)	0.50
Ascites	0 (0)	4 (11)	0.05	0 (0)	4 (15)	0.11
Biliary leakage	0 (0)	1 (3)	0.50	0 (0)	1 (4)	1
Hemorrhage	1 (2)	2 (5)	0.60	1 (4)	1 (4)	1.0
Systemic infection	0 (0)	4 (11)	0.05	0 (0)	4 (15)	0.11
Intra-abdominal abscess	0 (0)	2 (5)	0.23	0 (0)	1 (4)	1.0
Wound infection	0 (0)	0 (0)		0 (0)	0 (0)	
Portal thrombosis	0 (0)	0 (0)		0 (0)	0 (0)	
Pulmonary	3 (7)	3 (8)	1	1 (4)	3 (12)	0.61
Cardiac	1 (2)	2 (5)	0.60	0 (0)	2 (8)	0.50
Renal	1 (2)	3 (8)	0.35	1 (4)	2 (8)	1.0
Reoperation, n (%)	0 (0)	0 (0)		0 (0)	0 (0)	
Postoperative treatment, n (%)	0 (0)	2 (5)	0.23	0 (0)	1 (4)	1.0
Length of hospital stay (d) median (range)	2 (1-15)	6 (2-203)	< 0.01	3 (1-9)	7.5 (2-203)	< 0.01
90 d mortality, n (%)	2 (5)	2 (5)	1.0	2 (8)	2 (8)	1.0
Recurrence, n (%)	21 (52)	15 (40)	0.40	12 (46)	11 (42)	1.0

PSM: Propensity score matching; RFA: Radiofrequency ablation.

Technological improvements have increased effectiveness of RFA characterized by less invasiveness and morbidity and better tolerability compared to LR; on the other hand, liver resection guarantees removal of the tumor-bearing portal and hepatic veins territory affected by micro metastases and microscopic vascular tumor invasions[5,22-24].

The choice between percutaneous RFA and LR is still controversial because many randomized prospective studies and meta-analyses were not conclusive[6,25-27]. Several aspects must be considered for choosing the best procedure including patient's age, HCC characteristics, oncological outcome, periprocedural risks, length of hospitalization and costs[22].

According to Asian Pacific Association for the Study of the Liver (APASL) HCC guidelines[28], RFA is recommended as first line treatment for HCC ≤ 2 cm because it showed similar results in terms of OS compared to LR. Instead, American Association for the Study of Liver Diseases (AASLD) highlight that surgical resection remains the first therapeutic option in small size HCC, leaving RFA for patients not eligible for surgery[29]. In cases of a single HCC > 2 cm, all guidelines recommend LR as the first approach when feasible. RFA has the advantage of cost effectiveness, feasibility, minimal invasiveness, short hospital stay, excellent efficacy and is particularly suitable for older patients and tumors located in deep positions in the liver, also in PSS.

Our retrospective multicentric study showed better short-term outcomes and similar long-term outcomes for RFA compared to LR in elderly patients with HCC ≤ 30 mm located in PSS.

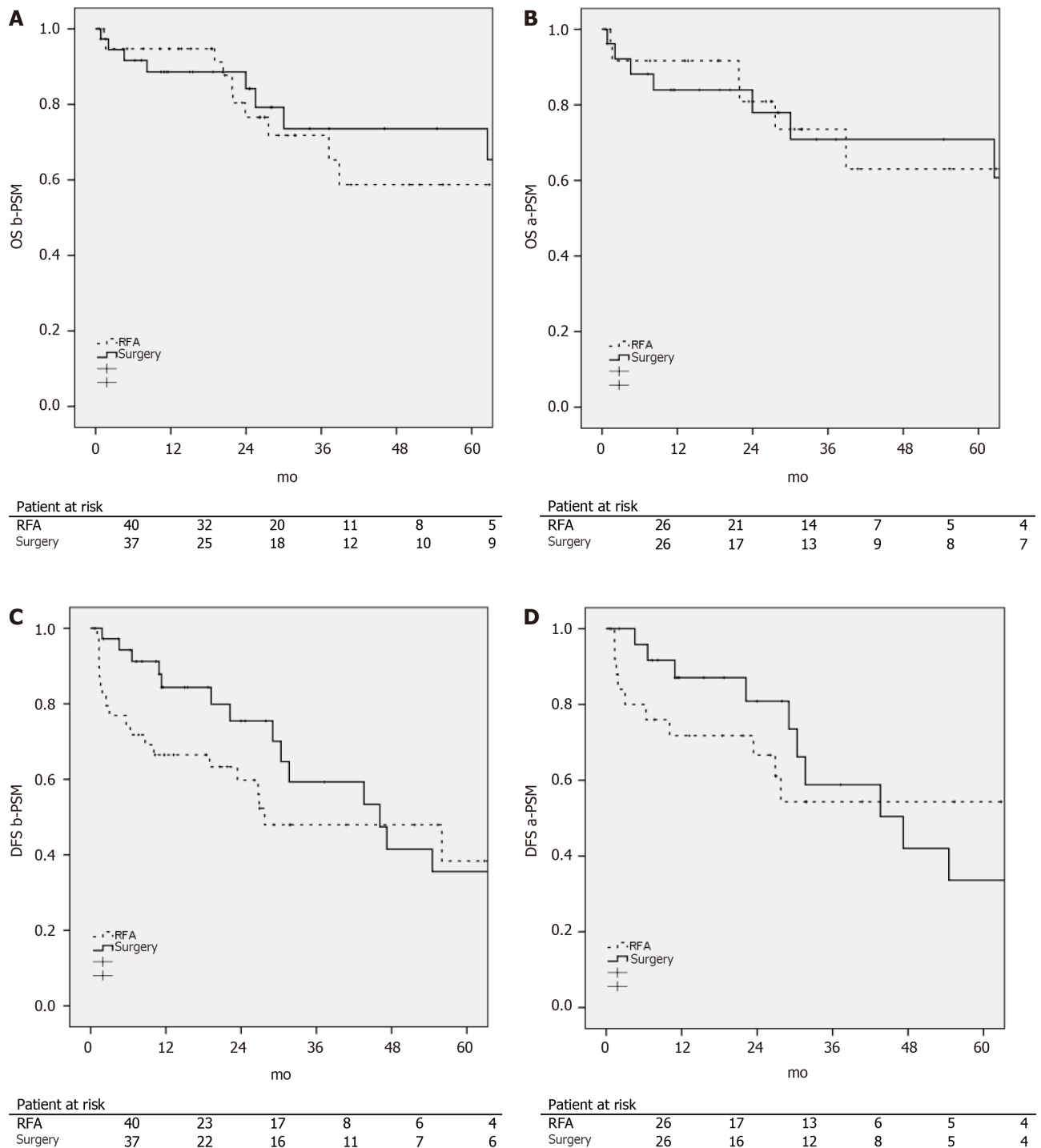


Figure 1 Overall and disease-free survival after surgery vs radiofrequency ablation in elderly patients for hepatocellular carcinoma before and after propensity score matching. A: Overall survival before propensity score matching, Log Rank (Mantel Cox) = 0.50; B: Overall survival after propensity score matching, Log Rank (Mantel Cox) = 0.91; C: Disease free survival before propensity score matching, Log Rank (Mantel Cox) = 0.17; D: Disease free survival after propensity score matching, Log Rank (Mantel Cox) = 0.70. OS: Overall survival; DFS: Disease-free survival.

In our work, operative time and hospital stay were shorter in the RFA group compared to the LR group. This highlights the less invasive nature of the ablative treatment and is corroborated by randomized controlled trials[6,25,27].

According to the literature data, overall postoperative complications were significantly lower in the RFA group than in the LR group. These data emphasize the minimally invasiveness and improved post-operative quality of life of percutaneous treatment, necessary features especially for elderly patients[30,31].

In our study, OS and DFS had no significant difference between the RFA and LR group and this is confirmed by Chen *et al*[25]. Conversely, many articles reported a decreased recurrence risk and improvement in OS of LR compared to the RFA group

[32-35], but we would underline that there was no specificity regarding patient's age.

LR has been associated with less HCC recurrences due to complete eradication of the tumor and venous tumor thrombi, and could therefore result in better long-term survival compared to RFA[36]. In addition, RFA may be associated with an increased risk of neoplastic dissemination after treatment due to repeated puncture and temperature-related intratumoral explosion[37].

Compared to LR, it is clear from numerous reports that percutaneous RFA treating liver tumors ≥ 40 -50 mm in diameter or located in difficult sites of the liver (subcapsular, adjacent gallbladder or diaphragm) is associated with an increased rate of incomplete treatment, which is usually reported erroneously as a local recurrence [37,38].

Liver resection should be considered for patients with better liver function and longer life expectation in order to balance the postoperative risk of treatment with the benefits in long-term survival.

It is evident that most of the studies and guidelines comparing LR with RFA do not consider the patient's age and the tumors locations, hence the need for additional prospective randomized studies focusing on elderly patients with HCC located in PSS.

CONCLUSION

RFA in PSS segments in elderly patients is safe and feasible, ensures a short hospital stay, increases the quality of life and does not modify the overall success rate. This technique should be recommended mainly in elderly patients because it allows a reduction of postoperative complications and a fast discharge to home.

ARTICLE HIGHLIGHTS

Research background

Liver resection and radiofrequency ablation are considered curative options for hepatocellular carcinoma, but the choice among them is still controversial, especially in cases of hepatocellular carcinoma affecting posterosuperior segments in elderly.

Research motivation

In literature there are few studies which focus on surgical treatments in elderly patients with hepatocellular carcinoma especially in posterosuperior segments.

Research objectives

To compare short and long-term outcomes between liver resection and radiofrequency ablation in elderly patients with single hepatocellular carcinoma located in posterosuperior segments.

Research methods

We performed a multicentric retrospective study enrolling 77 patients with ≥ 70 years of age, from January 2009 to January 2019 in 10 European hospital centers. Patients were divided into two groups according to the treatment, liver resection or radiofrequency ablation. Preoperative, peri-operative data and long term outcomes were retrospectively analyzed and compared in both groups before propensity score matching and after propensity score matching.

Research results

After propensity score matching, 26 patients were included in each group. Operative time and overall postoperative complications were higher in the resection group compared to the ablation group. A median hospital stay was significantly longer in the resection group than in the ablation group. There was no significant differences between resection and ablation groups in terms of overall survival and disease free survival at 1, 3 and 5 years.

Research conclusions

Radiofrequency ablation in posterosuperior segments in elderly is safe and feasible and ensures a short hospital stay, better quality of life and does not modify the overall and disease-free survival.

Research perspectives

Radiofrequency ablation can be considered a gold standard for the treatment of single hepatocellular carcinoma located in posterosuperior segments in elderly. These results must be a starting point for future research and to ensure a higher level of evidence in clinical practice.

REFERENCES

- 1 **Forner A**, Llovet JM, Bruix J. Hepatocellular carcinoma. *Lancet* 2012; **379**: 1245-1255 [PMID: 22353262 DOI: 10.1053/j.gastro.2007.04.061]
- 2 **Llovet JM**, Brú C, Bruix J. Prognosis of hepatocellular carcinoma: the BCLC staging classification. *Semin Liver Dis* 1999; **19**: 329-338 [PMID: 10518312 DOI: 10.1055/s-2007-1007122]
- 3 **Wu FH**, Shen CH, Luo SC, Hwang JI, Chao WS, Yeh HZ, Jan YG, Yen Y, Cheng SB, Wu CC, Lin YL, Peng FK. Liver resection for hepatocellular carcinoma in oldest old patients. *World J Surg Oncol* 2019; **17**: 1 [PMID: 30606220 DOI: 10.1186/s12957-018-1541-0]
- 4 **Ciria R**, Berardi G, Alconchel F, Briceño J, Choi GH, Wu YM, Sugioka A, Troisi RI, Salloum C, Soubrane O, Pratschke J, Martinie J, Tsung A, Araujo R, Sucandy I, Tang CN, Wakabayashi G. The impact of robotics in liver surgery: A worldwide systematic review and short-term outcomes meta-analysis on 2,728 cases. *J Hepatobiliary Pancreat Sci* 2020 [PMID: 33200536 DOI: 10.1002/jhbp.869]
- 5 **Livraghi T**, Meloni F, Di Stasi M, Rolle E, Solbiati L, Tinelli C, Rossi S. Sustained complete response and complications rates after radiofrequency ablation of very early hepatocellular carcinoma in cirrhosis: Is resection still the treatment of choice? *Hepatology* 2008; **47**: 82-89 [PMID: 18008357 DOI: 10.1002/hep.21933]
- 6 **Feng K**, Yan J, Li X, Xia F, Ma K, Wang S, Bie P, Dong J. A randomized controlled trial of radiofrequency ablation and surgical resection in the treatment of small hepatocellular carcinoma. *J Hepatol* 2012; **57**: 794-802 [PMID: 22634125 DOI: 10.1016/j.jhep.2012.05.007]
- 7 **Xiao L**, Xiang LJ, Li JW, Chen J, Fan YD, Zheng SG. Laparoscopic vs open liver resection for hepatocellular carcinoma in posterosuperior segments. *Surg Endosc* 2015; **29**: 2994-3001 [PMID: 25899815 DOI: 10.1007/s00464-015-4214-x]
- 8 **Abu Hilal M**, Tschuor C, Kuemmerli C, López-Ben S, Lesurtel M, Rotellar F. Laparoscopic posterior segmental resections: How I do it: Tips and pitfalls. *Int J Surg* 2020; **82S**: 178-186 [PMID: 32738544 DOI: 10.1016/j.ijsu.2020.06.052]
- 9 **Delvecchio A**, Conticchio M, Ratti F, Gelli M, Anelli FM, Laurent A, Vitali GC, Magistri P, Assirati G, Felli E, Wakabayashi T, Pessaux P, Piardi T, Di Benedetto F, de'Angelis N, Briceño-Delgado J, Adam R, Cherqui D, Aldrighetti L, Memeo R. Laparoscopic major hepatectomy for hepatocellular carcinoma in elderly patients: a multicentric propensity scorebased analysis. *Surg Endosc* 2021; **35**: 3642-3652 [PMID: 32748269 DOI: 10.1007/s00464-020-07843-7]
- 10 **European Association for the Study of the Liver**. EASL Clinical Practice Guidelines: Management of hepatocellular carcinoma. *J Hepatol* 2018; **69**: 182-236 [PMID: 29628281 DOI: 10.1016/j.jhep.2018.03.019]
- 11 **Couinaud C**. Definition of hepatic anatomical regions and their value during hepatectomy (author's transl). *Chirurgie* 1980; **106**: 103-108 [PMID: 7471968]
- 12 **Strasberg SM**, Phillips C. Use and dissemination of the brisbane 2000 nomenclature of liver anatomy and resections. *Ann Surg* 2013; **257**: 377-382 [PMID: 22895397 DOI: 10.1097/SLA.0b013e31825a01f6]
- 13 **Llovet JM**, Lencioni R. mRECIST for HCC: Performance and novel refinements. *J Hepatol* 2020; **72**: 288-306 [PMID: 31954493 DOI: 10.1016/j.jhep.2019.09.026]
- 14 **Orimo H**. [Reviewing the definition of elderly]. *Nihon Ronen Igakkai Zasshi* 2006; **43**: 27-34 [PMID: 16521795 DOI: 10.3143/geriatrics.43.27]
- 15 **Badawy A**, Seo S, Toda R, Fuji H, Fukumitsu K, Ishii T, Taura K, Kaido T, Uemoto S. A Propensity Score-Based Analysis of Laparoscopic Liver Resection for Liver Malignancies in Elderly Patients. *J Invest Surg* 2019; **32**: 75-82 [PMID: 29039987 DOI: 10.1080/08941939.2017.1373170]
- 16 **Coelho FF**, Kruger JA, Fonseca GM, Araújo RL, Jeismann VB, Perini MV, Lupinacci RM, Cecconello I, Herman P. Laparoscopic liver resection: Experience based guidelines. *World J Gastrointest Surg* 2016; **8**: 5-26 [PMID: 26843910 DOI: 10.4240/wjgs.v8.i1.5]
- 17 **Mostaedi R**, Milosevic Z, Han HS, Khatri VP. Laparoscopic liver resection: Current role and limitations. *World J Gastrointest Oncol* 2012; **4**: 187-192 [PMID: 22912914 DOI: 10.4251/wjgo.v4.i8.187]
- 18 **Abu Hilal M**, Aldrighetti L, Dagher I, Edwin B, Troisi RI, Alikhanov R, Aroori S, Belli G, Besselink M, Briceño J, Gayet B, D'Hondt M, Lesurtel M, Menon K, Lodge P, Rotellar F, Santoyo J, Scatton O, Soubrane O, Sutcliffe R, Van Dam R, White S, Halls MC, Cipriani F, Van der Poel M, Ciria R, Barkhatov L, Gomez-Luque Y, Ocana-Garcia S, Cook A, Buell J, Clavien PA, Dervenis C, Fusai G, Geller D, Lang H, Primrose J, Taylor M, Van Gulik T, Wakabayashi G, Asbun H, Cherqui D. The Southampton Consensus Guidelines for Laparoscopic Liver Surgery: From Indication to Implementation. *Ann Surg* 2018; **268**: 11-18 [PMID: 29064908 DOI: 10.1097/SLA.0000000000002524]

- 19 **Cho JY**, Han HS, Yoon YS, Shin SH. Feasibility of laparoscopic liver resection for tumors located in the posterosuperior segments of the liver, with a special reference to overcoming current limitations on tumor location. *Surgery* 2008; **144**: 32-38 [PMID: [18571582](#) DOI: [10.1016/j.surg.2008.03.020](#)]
- 20 **Becker F**, Morgül H, Katou S, Juratli M, Hölzen JP, Pascher A, Struecker B. Robotic Liver Surgery - Current Standards and Future Perspectives. *Z Gastroenterol* 2021; **59**: 56-62 [PMID: [33429451](#) DOI: [10.1055/a-1329-3067](#)]
- 21 **Lencioni R**, Crocetti L. Local-regional treatment of hepatocellular carcinoma. *Radiology* 2012; **262**: 43-58 [PMID: [22190656](#) DOI: [10.1148/radiol.11110144](#)]
- 22 **Viganò L**, Laurenzi A, Solbiati L, Procopio F, Cherqui D, Torzilli G. Open Liver Resection, Laparoscopic Liver Resection, and Percutaneous Thermal Ablation for Patients with Solitary Small Hepatocellular Carcinoma (≤ 30 mm): Review of the Literature and Proposal for a Therapeutic Strategy. *Dig Surg* 2018; **35**: 359-371 [PMID: [29890512](#) DOI: [10.1159/000489836](#)]
- 23 **Wood BJ**, Kruecker J, Abi-Jaoudeh N, Locklin JK, Levy E, Xu S, Solbiati L, Kapoor A, Amalou H, Venkatesan AM. Navigation systems for ablation. *J Vasc Interv Radiol* 2010; **21**: S257-S263 [PMID: [20656236](#) DOI: [10.1016/j.jvir.2010.05.003](#)]
- 24 **Leung U**, Kuk D, D'Angelica MI, Kingham TP, Allen PJ, DeMatteo RP, Jarnagin WR, Fong Y. Long-term outcomes following microwave ablation for liver malignancies. *Br J Surg* 2015; **102**: 85-91 [PMID: [25296639](#) DOI: [10.1002/bjs.9649](#)]
- 25 **Chen MS**, Li JQ, Zheng Y, Guo RP, Liang HH, Zhang YQ, Lin XJ, Lau WY. A prospective randomized trial comparing percutaneous local ablative therapy and partial hepatectomy for small hepatocellular carcinoma. *Ann Surg* 2006; **243**: 321-328 [PMID: [16495695](#) DOI: [10.1016/s0739-5930\(08\)70174-0](#)]
- 26 **Wang Y**, Luo Q, Li Y, Deng S, Wei S, Li X. Radiofrequency ablation vs hepatic resection for small hepatocellular carcinomas: a meta-analysis of randomized and nonrandomized controlled trials. *PLoS One* 2014; **9**: e84484 [PMID: [24404166](#) DOI: [10.1371/journal.pone.0084484](#)]
- 27 **Ng KKC**, Chok KSH, Chan ACY, Cheung TT, Wong TCL, Fung JYY, Yuen J, Poon RTP, Fan ST, Lo CM. Randomized clinical trial of hepatic resection vs radiofrequency ablation for early-stage hepatocellular carcinoma. *Br J Surg* 2017; **104**: 1775-1784 [PMID: [29091283](#) DOI: [10.1002/bjs.10677](#)]
- 28 **Omata M**, Cheng AL, Kokudo N, Kudo M, Lee JM, Jia J, Tateishi R, Han KH, Chawla YK, Shiina S, Jafri W, Payawal DA, Ohki T, Ogasawara S, Chen PJ, Lesmana CRA, Lesmana LA, Gani RA, Obi S, Dokmeci AK, Sarin SK. Asia-Pacific clinical practice guidelines on the management of hepatocellular carcinoma: a 2017 update. *Hepatol Int* 2017; **11**: 317-370 [PMID: [28620797](#) DOI: [10.1007/s12072-017-9799-9](#)]
- 29 **Marrero JA**, Kulik LM, Sirlin CB, Zhu AX, Finn RS, Abecassis MM, Roberts LR, Heimbach JK. Diagnosis, Staging, and Management of Hepatocellular Carcinoma: 2018 Practice Guidance by the American Association for the Study of Liver Diseases. *Hepatology* 2018; **68**: 723-750 [PMID: [29624699](#) DOI: [10.1002/hep.29913](#)]
- 30 **Fang Y**, Chen W, Liang X, Li D, Lou H, Chen R, Wang K, Pan H. Comparison of long-term effectiveness and complications of radiofrequency ablation with hepatectomy for small hepatocellular carcinoma. *J Gastroenterol Hepatol* 2014; **29**: 193-200 [PMID: [24224779](#) DOI: [10.1111/jgh.12441](#)]
- 31 **Polanczyk CA**, Marcantonio E, Goldman L, Rohde LE, Orav J, Mangione CM, Lee TH. Impact of age on perioperative complications and length of stay in patients undergoing noncardiac surgery. *Ann Intern Med* 2001; **134**: 637-643 [PMID: [11304103](#) DOI: [10.7326/0003-4819-134-8-200104170-00008](#)]
- 32 **Chu HH**, Kim JH, Kim PN, Kim SY, Lim YS, Park SH, Ko HK, Lee SG. Surgical resection vs radiofrequency ablation very early-stage HCC (≤ 2 cm Single HCC): A propensity score analysis. *Liver Int* 2019; **39**: 2397-2407 [PMID: [31549771](#) DOI: [10.1111/Liv.14258](#)]
- 33 **Kaibori M**, Yoshii K, Hasegawa K, Ogawa A, Kubo S, Tateishi R, Izumi N, Kadoya M, Kudo M, Kumada T, Sakamoto M, Nakashima O, Matsuyama Y, Takayama T, Kokudo N; Liver Cancer Study Group of Japan. Treatment Optimization for Hepatocellular Carcinoma in Elderly Patients in a Japanese Nationwide Cohort. *Ann Surg* 2019; **270**: 121-130 [PMID: [29608544](#) DOI: [10.1097/SLA.0000000000002751](#)]
- 34 **Liu PH**, Hsu CY, Hsia CY, Lee YH, Huang YH, Chiou YY, Lin HC, Huo TI. Surgical Resection Versus Radiofrequency Ablation for Single Hepatocellular Carcinoma ≤ 2 cm in a Propensity Score Model. *Ann Surg* 2016; **263**: 538-545 [PMID: [25775062](#) DOI: [10.1097/SLA.0000000000001178](#)]
- 35 **Peng ZW**, Lin XJ, Zhang YJ, Liang HH, Guo RP, Shi M, Chen MS. Radiofrequency ablation vs hepatic resection for the treatment of hepatocellular carcinomas 2 cm or smaller: a retrospective comparative study. *Radiology* 2012; **262**: 1022-1033 [PMID: [22357902](#) DOI: [10.1148/radiol.11110817](#)]
- 36 **Huang J**, Yan L, Cheng Z, Wu H, Du L, Wang J, Xu Y, Zeng Y. A randomized trial comparing radiofrequency ablation and surgical resection for HCC conforming to the Milan criteria. *Ann Surg* 2010; **252**: 903-912 [PMID: [21107100](#) DOI: [10.1097/SLA.0b013e3181efc656](#)]
- 37 **Llovet JM**, Vilana R, Brú C, Bianchi L, Salmeron JM, Boix L, Ganaou S, Sala M, Pagès M, Ayuso C, Solé M, Rodés J, Bruix J; Barcelona Clinic Liver Cancer (BCLC) Group. Increased risk of tumor seeding after percutaneous radiofrequency ablation for single hepatocellular carcinoma. *Hepatology* 2001; **33**: 1124-1129 [PMID: [11343240](#) DOI: [10.1053/jhep.2001.24233](#)]
- 38 **Conticchio M**, Inchingolo R, Delvecchio A, Laera L, Ratti F, Gelli M, Anelli F, Laurent A, Vitali G, Magistri P, Assirati G, Felli E, Wakabayashi T, Pessaux P, Piardi T, di Benedetto F, de'Angelis N,

Briceño J, Rampoldi A, Adam R, Cherqui D, Aldrighetti LA, Memeo R. Radiofrequency ablation vs surgical resection in elderly patients with hepatocellular carcinoma in Milan criteria. *World J Gastroenterol* 2021; **27**: 2205-2218 [PMID: [34025074](#) DOI: [10.3748/wjg.v27.i18.2205](#)]



Published by **Baishideng Publishing Group Inc**
7041 Koll Center Parkway, Suite 160, Pleasanton, CA 94566, USA

Telephone: +1-925-3991568

E-mail: bpgoffice@wjgnet.com

Help Desk: <https://www.f6publishing.com/helpdesk>

<https://www.wjgnet.com>

